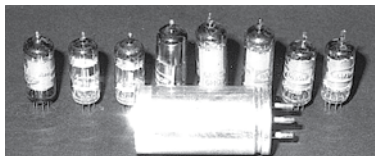


Thunderbird Specialists
CASCO
SINCE 1969



1955-1957 THUNDERBIRD ILLUSTRATED CATALOG 2015

RADIO & ANTENNA



04454A	Spacer Kit Speaker Grille - Set/4 - 57	3.40
18805A	Radio Tube Set - 55 - Without Vibrator	71.72
18805B	Radio Tube Set - 56 - Without Vibrator	99.95
18805C	Radio Tube Set - 57	67.75
18805D	Radio Vibrator - 6 Volt - 55	35.25
18805E	Radio Vibrator - 12 Volt - 56	35.25
18805F	Wire & Fuse Holder - Radio to Ignition	15.75

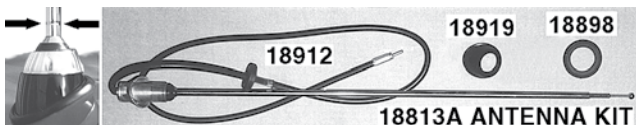


18806	Speaker - Radio - Replacement (6x9x2 5/8).....	18.90
18806S	Stereo Speakers & Wires - Replaces	
	Original Speaker Under Dash	46.00
18806SS	Stereo Speakers & Wires - With Pioneer	
	Speakers for Higher Fidelity Sound	98.00
18807	Socket and Wires - Original Underdash	
	Radio Speaker to Radio - Replacement.....	9.50



18810	Nut - Special - Thin - For Radio Shafts	2.05
--------------	--	-------------

Antenna Nut Tool - TL3
See page 57



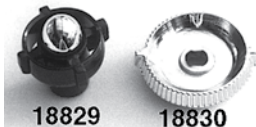
*18813A	Antenna Kit - Concours Type With	
	Groove at the Base - Complete Kit	62.50
18813X	Antenna Kit - With NO Groove - Complete Kit	60.50
18813B	Antenna Kit - Deck Mount - Concours - 57	92.31

LEAD IN WIRE, TUBES & VIBRATORS - 18805



18829D	Radio Knob - Black & Chrome - "D" Shaft	15.75
18829S	Radio Knob - Black & Chrome - Split Shaft.....	15.75

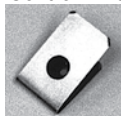
★ T-Bird Fact: Original 55 & 56 radios use 2 - 18829S.
Original 57 radios use 1 - 18829D & 1 - 18829S.
Jensen radios use 18829D. Kenwood, Harrison &
TBS - FM radios use 18829S.



18830	Radio Bezel - Disc Knob - Chrome	13.00
--------------	---	--------------



18832	Condenser - Radio Suppression - For	
	Voltage Regulator - Replacement	19.75
18869	Radio Volume Control Wire '57	31.88



18870A	Hood Grounding Clip - Improves Radio	
	Reception - With Attaching Screw - 55.....	3.40
18870B	Hood Grounding Clip - Improves Radio	
	Reception - With Attaching Screw - 56.....	3.40

#18898	Gasket - Radio Antenna Base	2.05
18912	Grommet - Antenna Lead in Seal & Door.....	3.45
18919	Stanchion - Antenna - Black Plastic	10.45



533223	Lens - Radio Dial - Plastic - 55.....	19.95
536273	Lens - Radio Dial - Plastic - 56/57.....	19.95

MODERN STEREO RADIOS



It's never been easier to enjoy your music your way. Choose AM, FM, Front auxiliary, or rear USB auxiliary. Use the front auxiliary input to play music stored on your cell phone, MP3 player, or your portable CD player. Use the earphone output from your device and plug it into the front of this radio. Also new to these models, you can play music stored on a flash drive. Simply plug a USB flash drive containing MP3 files into the rear USB cable and this radio will find and play your files. Includes chrome "Mustang style" knobs shown. For new original style knobs order 2 pieces of 18829S split shaft knob and 2 pieces of 18830 radio bezels.

TBS9	4x25 Watts Chrome Face Multiple Input	242.00
TBS10	4x50 Watts Chrome Face Multiple Input	275.00

REPRO RADIOS

New "Repro" radios for your Thunderbird. It looks like the original radio but functions like a new one. 180 watt maximum power, digitally tuned receiver with analog display, has volume, bass, treble, balance, fade & tuning controls, memory retention with power disconnected, 3.5mm jack for input from satellite radio, iPod, etc. Original style knobs Included.



TBS2	Repro Radio - looks original - 4x45 Watts.....	595.00
-------------	---	---------------

TBS3 town & country



TBS3	Repro T&C Radio, looks like original,	
	Functions like a modern radio, 4x45 Watts	695.00



AUX	3.5mm Front Input Patch Cable 55" long	8.95
------------	---	-------------



POWER INVERTER to convert 6 volt positive ground to 12 volt negative ground so that modern accessories like the TBS - FM radio above can be used in your '55. Hi power - rated at 2.1 amps (26.5 watts) output. Not recommended for use on accessories over 30 watts.
INVERTER Converts 6 V+ to 12 V - 103.95

The CASCO Guarantee

All CASCO parts are guaranteed! If you are not satisfied with any item you may return it and we will promptly exchange it or send you a refund. (See details on back)



Order PH 1-800-374-0914
Toll Free FX 1-800-513-5806

International phone 740-622-8561 fax 740-622-5151

Technical Questions? Call our technicians ph 740-622-9700

Ordered by: ☐ Check if change of address

Please ship to: ☐ Check if change of address

☐ This time only ☐ Gift

Name _____

Address _____

City _____

State _____ Zip _____

Daytime Phone No. _____

E-mail address: _____

Name _____

Address _____

City _____

State _____ Zip _____

Backorder? ☐ yes ☐ no (details on back)

	QTY.	CATALOG PART NUMBER	YEAR BIRD	DESCRIPTION	Pg.	PRICE EACH	TOTAL PRICE
1							
2							
3							
4							
5							
6							
7							
8							
9							
10							
11							
12							
13							
14							
15							
16							

Thank You!

- ☐ Power Windows ☐ Automatic Trans ☐ BU Lamps ☐ 292 2V ☐ 292 4V
☐ Power Seat ☐ Tinted Glass ☐ Dress-up Kit ☐ 312 4V ☐ 312 8V
☐ Power Brakes ☐ 1955 12-volt

☐ **Yes!** Please send CASCO's e - newsletter to: _____

☐ **Yes!** Please send me information on Classic Thunderbird Club International.

Subtotal

7.25% Sales tax
(Ohio shipments only)

Shipping & Handling
12% of subtot \$12min \$35max
- Ohio Sales -
10% of subtot \$10min \$25max

Total

Method of Payment: ☐ Charge my credit card:

Card No. _____ CVV: _____



2/2012

Expires: ____/____/____

☐ Check or M.O. \$ _____

ORDERING INFORMATION

THE CASCO GUARANTEE

If you are dissatisfied with any new item you may return it along with a MERCHANDISE RETURN FORM, which can be found on page 79 or on our web site, within 60 days of receipt for a full refund less shipping charges. **Please call our office for RMA** (return merchandise authorization) number. Returned items must be in good, as received, condition. Used parts will be subject to a 25% restocking charge. We do not accept returned electrical parts. After 60 days, returns of new parts will be subject to a 10% restocking charge. Returned items without an invoice or RMA number will be charged a \$5.00 search charge. Items without purchase confirmation will not be accepted. We will not accept returns by COD or postage due. If CASCO is at fault we will refund reasonable return shipping.

CASCO LOYALTY REWARDS PROGRAM

Every dollar spent on parts from CASCO will reward the customer with one loyalty rewards point. Customers can see their accumulated points total printed on the bottom of their most recent invoice. An accumulated 500 points can be redeemed for \$10 off the next order. CASCO will announce additional rewards program promotions, such as double points, on the web site and through the ThunderEnlightening email newsletter.

TECHNICAL ASSISTANCE

So that we may serve you more efficiently, please use our technical assistance line at **740-622-9700** for help with your restoration and mechanical questions. You can also email CASCO technicians directly at techinfo@classictbird.com

TELEPHONE & FAX ORDERS

We accept Visa, MasterCard, Discover Card, and Wire Transfer telephone orders

Toll - Free Order Line (800) 374-0914 - Toll - Free Fax Line (800) 513-5806

Local & international customers please phone (740) 622-8561 or fax (740) 622-5151

Bank charges for wire transfers are the responsibility of the customer (normally \$15 - \$20).

INTERNET ORDERS

Shop 24-7 on our web store. Go to www.classictbird.com and click on "On - line Store". We accept Visa, MasterCard, and Discover Card. Order with confidence - we make every effort to keep your transaction secure.

MAIL ORDERS

We accept personal checks, money orders, bank checks, Visa, MasterCard, and Discover Card. Please do not send cash. Please provide complete description of the parts you need. Shipments may be held for two weeks for personal checks to clear your bank. Returned checks will be assessed a \$25 NSF fee. Send to CASCO, 795 High Street, Coshocton, OH 43812. Orders shipped **COD** will require certified funds in the form of a **Money Order** or **Cashiers Check ONLY**. UPS & Fed Ex will not accept cash. COD charges of \$12.00 will be added to each package shipped COD.

CREDIT & DEBIT CARD ORDERS

When an order is initially placed, we perform a pre - authorization on your credit card for an amount sufficient to cover any potential charges associated with your order. This pre - authorization allocates a portion of your line of credit towards the purchase from us. Due to the restrictions of credit card processing, the pre - authorization amount is normally slightly higher than the exact order amount that is finally charged to the credit card. The exact amount is charged to the credit or debit card at the time the order is shipped from our facility. If we do not use the pre - authorization for some reason, (order cancelled, item sold out, etc.) the pre - authorized amount will be restored to your credit card's line of credit in the amount of time determined by the issuing bank. The card issuing bank may hold the original pre - authorization amount for some period of time even after we have already charged the card. Please contact your bank to find out what their policy is with regard to releasing your funds on a pre - authorization. Only your bank can decide when to release that amount back to your account.

BACKORDERS

If you order an item which we expect to be able to ship within 30 days and that item is not immediately available, we will backorder the item. Please note or advise if you *do not* wish to have items backordered. Backordered items will be sold at the price in effect at the time of shipment. Shipping charges will be added to each shipment, including any backorders, as shown below (12% of backorder subtotal - \$12.00 min. and \$35.00 max.).

SHIPPING CHARGES

NORMAL SURFACE shipping charges within the continental United States will be calculated as follows: 12% of subtotal with a \$12 minimum and a \$35 maximum for each shipment. Ohio sales: 10% subtotal with \$10 min. and \$25 max.

ALL OTHER shipping methods including overnight/express services, priority mail, freight, etc. will be charged actual shipping cost, a reasonable box & pack charge plus a \$5.00 special handling fee. Truck and Air Express shipments will be sent freight collect.

OVERSEAS shipments may be charged a \$5.00 documentation charge in addition to all other charges. Shipments outside the continental United States, please specify your preferred method for shipping.

OHIO SALES TAX

Ohio sales tax is charged on all pickup orders and all orders shipped to a location in the state of Ohio.

PRICES & AVAILABILITY

All prices are subject to change without notice at any time. Availability is subject to prior sale.

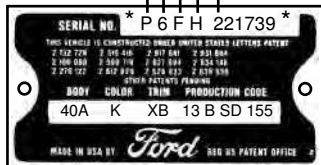
LIABILITY

The seller, CLASSIC AUTO SUPPLY CO. INC. hereby expressly disclaims all warranties, either expressed or implied, including any implied warranty of merchantability or fit for a particular purpose, and CLASSIC AUTO SUPPLY CO. INC. neither assumes nor authorizes any other person to assume for it any liability in connection with the sale of this merchandise.

The liability of CLASSIC AUTO SUPPLY is limited only to the replacement of defective parts. No labor claims will be honored.

Data Plate Decoder

Assembly plant _____ Body style _____
Model year _____ Consecutive unit# _____
Engine code¹ _____



Body type² 40A K XB 13 B SD 155 Dealer code⁵ _____
Body color³ _____ Month _____
Trim code _____ Day of month _____
Scheduled item No.⁴ _____

¹ Either 215 HP with overdrive or 225 HP with Fordomatic

² All 55 & 56 were code 40A All 57 were code 40

³ Body & Hardtop color. A second letter indicates a different color for the hard top

⁴ 155th vehical (not only Thunderbird) scheduled to be made on Feb 13 1956

⁵ SD signifies a Boston MA dealer ordered this vehicle

Year	Code	Engine	Carb	Transmission	HP
1955	P	292	4V	3-speed	193
1955	P	292	4V	Fordomatic	198
1955	P	292	4V	Overdrive	198
1956	M	292	4V	3-speed	202
1956	P	312	4V	Overdrive	215
1956	P	312	4V	Fordomatic	225
1956	P	312	8V	3-sp or OD	260
1957	C	292	2V	3-speed	212
1957	D	312	4V	Fdmtc or OD	245
1957	E	312	8V	Any	270
1957	F	312	4V SC	Any	300

Classic Auto Supply
795 High St
Coshocton, OH 43812

www.classictbird.com
Ph: (740) 622-8561
Fx: (740) 622-5151

Paint Color Codes

1955

A--Raven Black
E--Snowshow White
R--Torch Red
T--Thunderbird Blue
V--Goldenrod Yellow

1956

A--Raven Black
E--Colonial White
J--Buckskin Tan
K--Fiesta Red
L--Peacock Blue
M--Goldenglow Yellow
T--Thunderbird Gray
X--Navajo Gray
Y--Sunset Coral
Z--Thunderbird Green

1957

A--Raven Black
E--Colonial White
F--Starmist Blue
J--Willow Green
N--Gunmetal Gray
Q--T-bird Bronze
V--Flame Red
X--Dusk Rose
Y--Inca Gold
Z--Coral Sand

Trim Color Codes

1955

XA--Black & White
XB--Red & White
XC--Turquoise & White
XD--Black & Yellow

1956

XA--Black & White
XB--Red & White
XC--Peacock & White
XD--Tan & White
XF--Green & White
XG--Brown & White

1957

XA--Raven & Colonial
XH--Flame Red
XJ--Bronze
XK--Colonial White
XL--Dresden & Starmist
XM--Cumberland & Willow

Manufacturing Date

1st Year

A-Jan	E-May	J-Sep
B-Feb	F-June	K-Oct
C-Mar	G-July	L-Nov
D-Apr	H-Aug	M-Dec

2nd Year

N-Jan	S-May	W-Sep
P-Feb	T-June	X-Oct
Q-Mar	U-July	Y-Nov
R-Apr	V-Aug	Z-Dec

