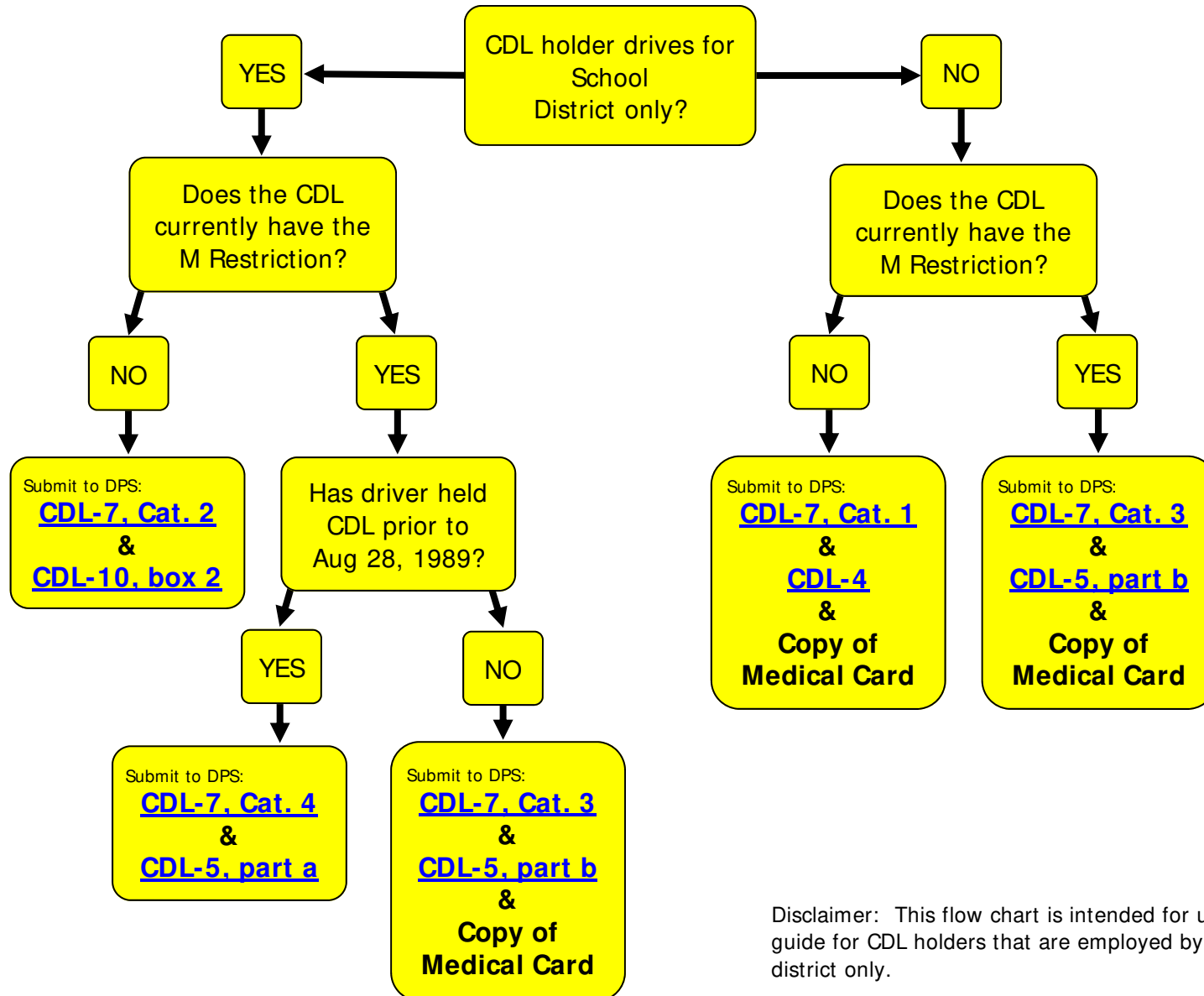


# A Guide for CDL Holders Employed by a School District CDL Self-Certification Affidavit Flow Chart



Disclaimer: This flow chart is intended for use as a guide for CDL holders that are employed by a school district only.

## Frequently Asked Questions

### **Is every CDL holder required to self certify?**

Yes. Any CDL holder who fails to self certify by January 31, 2014 will lose their CDL license and be required to go through the entire process of testing to re-obtain it.

### **Why are Drivers receiving the *Commercial Driver License Medical Certification Enrollment Notice* in the mail?**

DPS is sending out letters to notify drivers that have not self-certified to go ahead and do so to be on board before the January 31, 2014 deadline.

### **How often do I have to certify?**

You only re-certify if you have a change in status.

### **If I'm required to submit a copy of my medical card, how often do I have to resubmit it?**

You will need to submit a new medical card when the current one on file expires.

### **I've already self-certified and only work for the school district but now have a 2nd job requiring the use of my CDL?**

You would need to change your status to a Category 1 or Category 3 by completing a new CDL-7 form along with the appropriate form that follows and a copy of your medical card.

### **Is there a limit on how many times I can change my status?**

There is no limit nor is there a fee for changing the status.