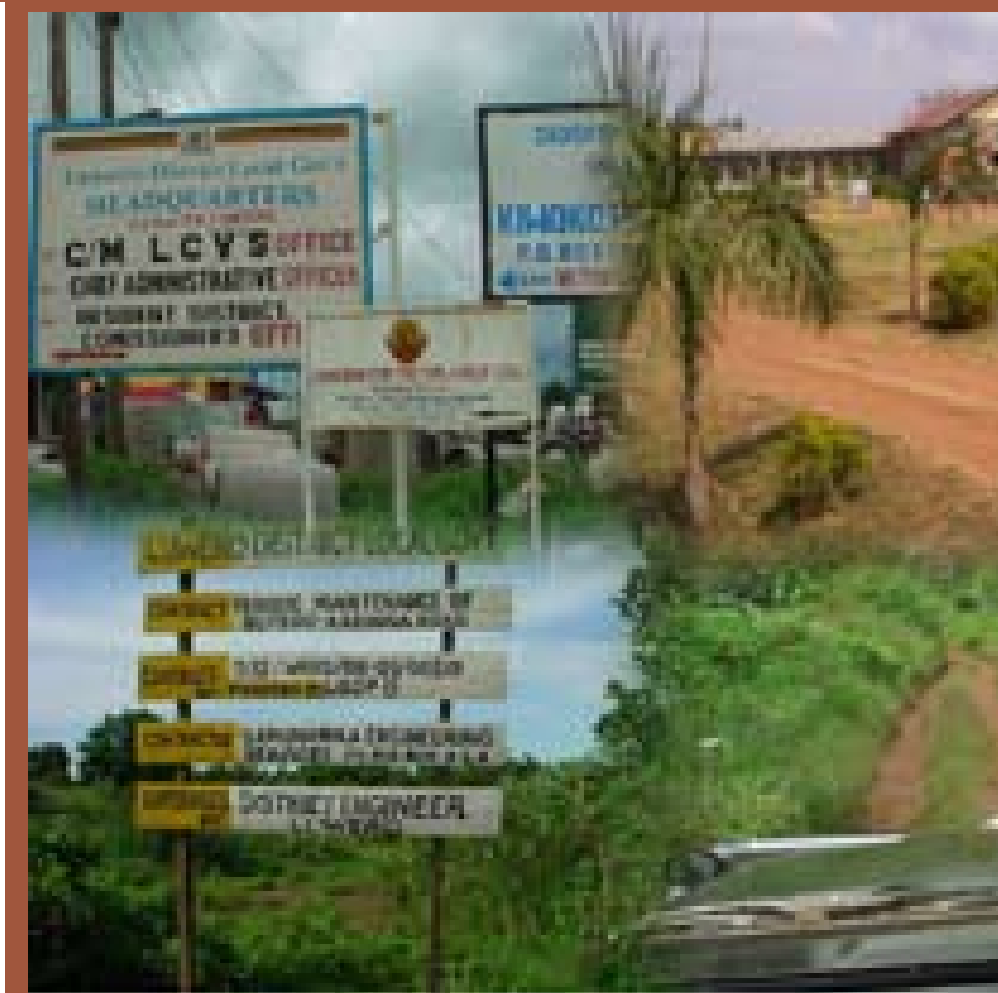




LOCAL GOVERNMENT COUNCILS PERFORMANCE AND QUALITY OF SERVICE DELIVERY IN UGANDA

LUWERO DISTRICT COUNCIL SCORE-CARD 2008/09



Lillian Muyomba – Tamale
Eugene Gerald Ssemakula
David Ssempala
John Segujja

Published by ACODE
P.O Box 29836, Kampala
Email: library@acode-u.org, acode@acode-u.org
Website: <http://www.acode-u.org>

Citation:

Muyomba, L., T., et.al. (2010). Local Government Councils Performance and the Quality of Service Delivery in Uganda: Luwero District Council Score Card 2008/09. ACODE Policy Research Series, No. 38, 2010. Kampala.

© ACODE 2010

All rights reserved. No part of this publication may be reproduced, stored in a retrieval system or transmitted in any form or by any means electronic, mechanical, photocopying, recording or otherwise without the prior written permission of the publisher. ACODE policy work is supported by generous donations and grants from bilateral donors and charitable foundations. The reproduction or use of this publication for academic or charitable purpose or for purposes of informing public policy is excluded from this general exemption.

ISBN

Local Government Councils Performance and Quality of Service Delivery in Uganda

LUWERO DISTRICT COUNCIL SCORE-CARD 2008/09

**Lillian Muyomba – Tamale
Eugene Gerald Ssemakula
David Ssempala
John Segujja**

ACODE Policy Research Paper Series No.38, 2010

TABLE OF CONTENTS

Acronyms	Iii
Acknowledgements	Iv
1 Introduction	1
2 Methodology And Score Card	2
3 Background	4
4 Selected Socio-economic Indicators For Luwero District Local Government	6
4.1 Primary Education	6
4.2. Road Network	7
5 Budget And Revenue Architecture Of Luwero Local Government	8
5.1 Budget Sources	8
5.2 Budget Allocations	8
6. Score-card Findings And Interpretation	10
6.1 Score-card Performance Of Luwero District Council	10
6.2 District Chairperson	10
6.3 District Speaker	11
6.4 District Councilors	11
6.4.1 Contact With The Electorate	12
6.4.2 Participation In Lower Local Governments	14
6.5 Score-card Performance Of Special Interest Group Representatives	14
7. Luwero District Performance And The Quality Of Public Services	16
7.1 External Factors For Poor Performance And Poor Service Delivery	16
7.1.1 High Dependence On The Central Government	16
7.1.2 Absence Of Strategic Development Planning And Implementation Targets	16
7.1.3 Lack Of Knowledge Among The Electorate On The Civic Functions Of The Council	17
7.1.4 Political Power Without Authority Over Planning And Budgeting	17
7.1.5 Corruption And Public Service Delivery In The District	18
7.1.6 Abuse Of Public Office	18
8. Recommendations And General Conclusion	21
8.1 Advocacy For A Changed Budget Architecture	21
8.2 Adopt Minimum Education Qualifications For Council Members	21
8.3 Formulate A Comprehensive And Integrated Long-term Development Plan	21
8.4 Continuous Orientation And Training For Councilors	22
8.5 Contact With The Electorate	22
9. Conclusion	23
References	24
Annexes	26
Annex 1: List Of Political Leaders And Councilors In Luwero District	26
Annex 2: Luwero District Council Score-card	27
Annex 3: Luwero District Chairperson Score-card	28
Annex 4: Luwero District Speaker Score-card	29
Annex 5: Councilors' Score-cards	30

Acronyms

ACODE	Advocates Coalition for Development and Environment
BoQs	Bills Of Quantities
CAO	Chief Administrative Officer
CBO	Community Based Organizations
CSO	Civil Society Organizations
DDP	Deepening Democracy Program
DDP	District Development Plan
DEC	District Executive Committee
DEO	District Education Officer
DPTC	District Technical Planning Committee
DSC	District Service Commission
FAL	Functional Adult Literacy
FGD	Focus Group Discussions
FY	Financial Year
HC	Health Centre
LG	Local Government
LGCSC	Local Government Councils' Score-card
LGCSCI	Local Government Councils' Score-card Initiative
LLG	Lower Local Government
MoLG	Ministry of Local Government
NAADS	National Agricultural Advisory Services
NAT	National Assessment Team
NGO	Non Governmental Organizations
NSSF	National Social Security Fund
NPPAs	National Priority Program Areas
OVC	Orphans and Vulnerable Children
PAC	Public Accounts Committee
PHC	Primary Health Care
PLE	Primary Leaving Examinations
PTA	Parent Teacher Associations
PWD	People With Disability
RDC	Resident District Commissioner
TC	Town Council
TPC	Technical Planning Committee
UBOS	Uganda Bureau Of Statistics
ULGA	Uganda Local Government Association
UNEB	Uganda National Examination Board
UPE	Universal Primary Education
UPHOLD	Uganda Program for Human and Holistic Development
VEDCO	Volunteer Efforts for Development Concerns

Acknowledgements

The Local Government Councils Score-card Initiative (LGCSCI) is a 10-year project implemented by ACODE with a goal of improving the quality of public service delivery by building the demand-side of governance and accountability. The initiative achieves this goal by undertaking and publishing local government council score-cards and robust outreach programmes that target citizens and build the capacity of local government political leaders. The initiative was launched in 2009 by conducting an initial assessment of the performance of 10 local government councils, including Luwero, for FY2008/09. ACODE is indebted to the Deepening Democracy Programme and its contributing development partners for providing the initial funding that made the first assessment possible.

During the assessment process, ACODE's study team employed a wide range of participatory methods that involved structured and unstructured interviews, focus group discussions (FGDs), and regular interactions with key local government officials (such as Luwero clerk to council, as well as staff within the public relations office). The research team acknowledges the support and cooperation received from the councilors who cooperated with the assessment and citizens who participated in the focus group discussions that were organized as part of the assessment exercise. The research team also acknowledges the officials who participated in the assessment by providing information and clarifications on a wide range of issues.

ACODE is grateful to Mr. Mukotani Ruyendo and Ms. Elizabeth Allen who reviewed the final report and provided very useful guidance that enabled the timely completion of the report. The authors of this report also benefitted from the wide-ranging discussions held with the ACODE study teams that were working with other districts. We benefitted from the workshops and electronic mail discussions with other staff over the course of the assessment. We extend our special appreciation to all of them individually and collectively.

Finally, we are conscious that this Score-card for Luwero District Council is the first of its kind and the methodology used has not been tested elsewhere. In the process of conducting the assessment, we have encountered a number of challenges, particularly related to record keeping and information retrieval. However, we have taken due care to ensure that the facts presented in this report are reasonably accurate and are a reasonable presentation of Luwero District and its constituent organs. We are confident that the findings and recommendations go a long way to improve the workings of the district council, thereby contributing to improved service delivery and better governance.

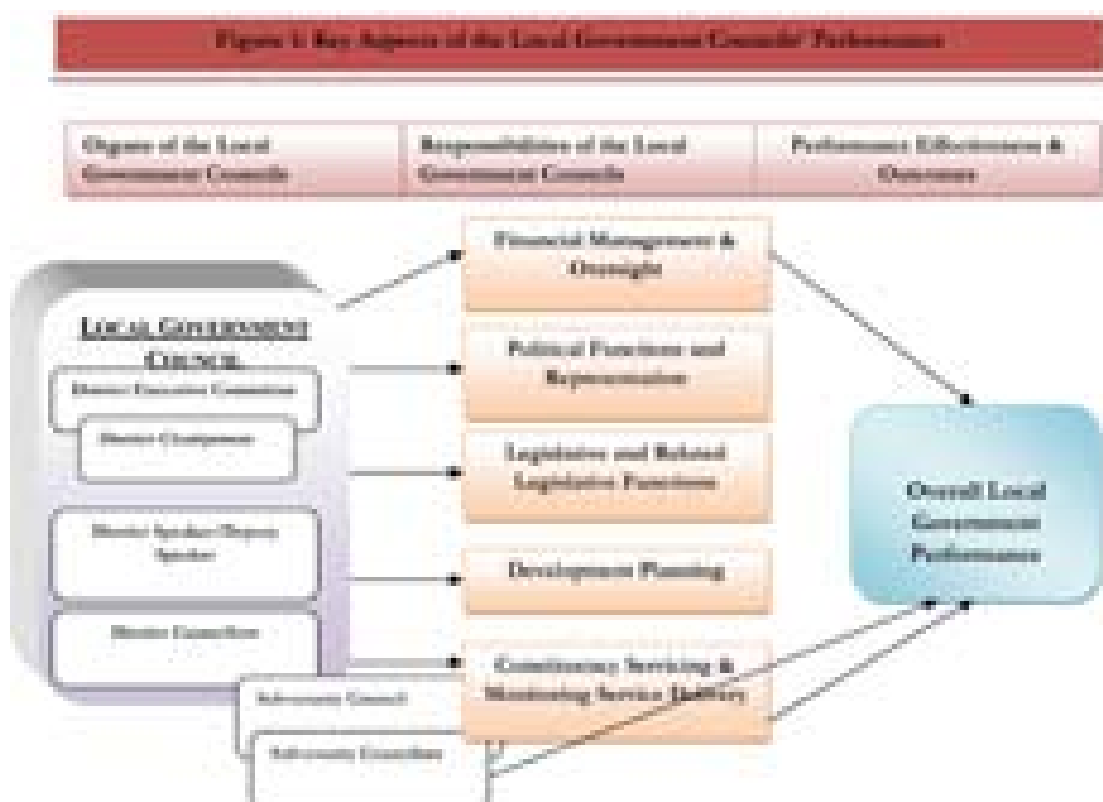
1 Introduction

In 1992, Uganda adopted a decentralization policy that sought to establish a system of governance underpinned by strong local governments. Subsequent constitutional and legal reforms established districts and sub-counties as key pillars of local governments through which effective service delivery and local governance is to be attained. Although decentralization has been pursued over the last two decades, there is widespread consensus that the performance of local governments is less than desirable. The revenue base of local governments has diminished substantially, rendering them heavily dependent on central government disbursements, mainly through conditional grants. The quality of service provision is less than desirable, as well, with key services such as health care, water, sanitation, education, and access to agricultural advisory services remaining dismal. Yet, there is no evidence that the citizens who are the intended beneficiaries of the decentralization system are demanding accountability and better performance from their elected leaders.

Over the years, the Ugandan government has sought to improve the functioning of local governments through regular monitoring and inspection processes. However, these processes have not adequately focused on the local government councils, as the mandated executive and legislative organs of the local governments. This report is a product of an ongoing assessment of the performance of local government councils in Uganda that commenced in 2009, focusing on the financial year 2008/09. The assessment was designed as part of an initiative to regularly monitor the performance of local government councils in Uganda, and to publish and disseminate a local council's performance "score-card" as a means of increasing citizens' demand for improved service delivery and accountability on the part of elected leaders. For the FY2008/09, similar assessments were undertaken in nine other districts including Amuria, Amuru, Hoima, Kampala, Kamuli, Mbale, Moroto, Nebbi and Ntugamo. The assessment focused on the local government councils and their respective organs as outlined in the Local Government Act and other legislation. The council as a corporate body, the chairperson, the speaker, and the councilors formed the units of analysis for the assessment.

2 Methodology and Score Card

This assessment was conducted using a methodology and score-card developed for the Local Government Councils Score-card Initiative.¹ As shown in Figure 1 below, this methodology and score-card measures the performance of local government councils and councilors on five key themes that comprise the responsibilities of local government councils, their organs, and individual councilors.² These themes are: financial management and oversight; political functions and representation; legislation and related legislative functions; development planning; and constituency servicing and monitoring service delivery.³ Consequently, scores were developed to measure the performance of councils with regard to their core statutory functions: political leadership and representation; legislation and related legislative functions’ development planning; financial management and oversight; constituency servicing; and participation in lower local government councils.



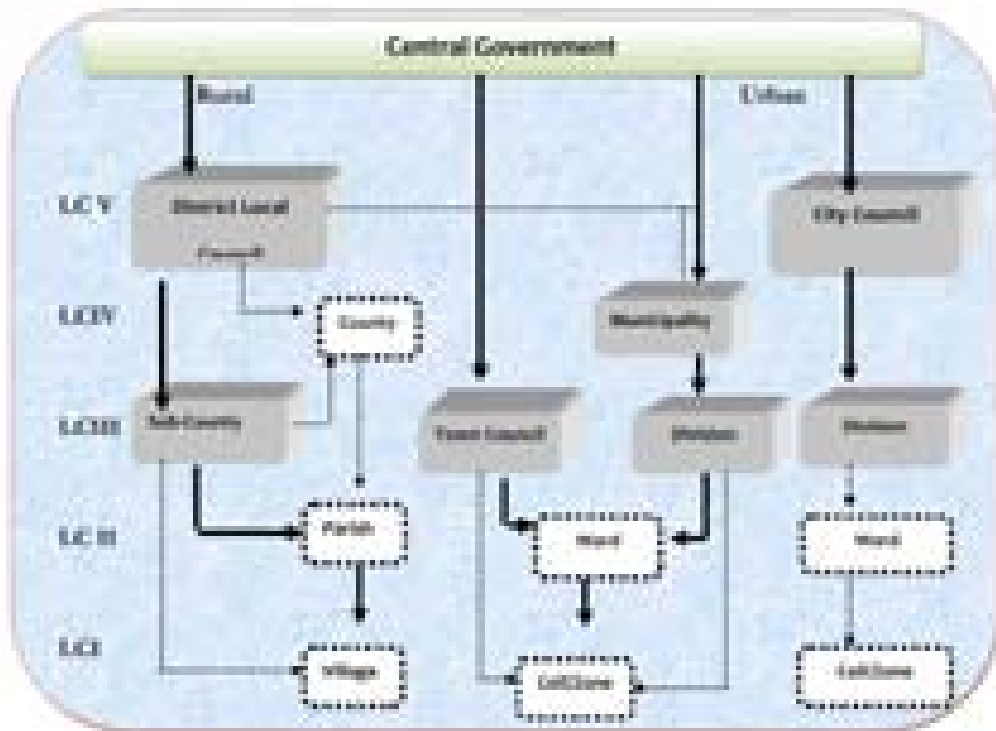
¹ See Tumushabe, Godber, et al (2010). Monitoring and Assessing the Performance of Local Government Councils in Uganda-Background, Methodology and Indicators. ACODE Policy Research Series No. 31 ACODE. Kampala.

² Ibid

³ Ibid

The research team derived monitoring indicators from each of the themes, with a specific focus on both governance and service delivery. The score-cards provide a basis for analyzing the factors that impinge on the performance of the council, while the service delivery indicators seek to assess individual leaders' contributions to central government priority sectors such as health, education, water and sanitation, and agriculture. While the methodology assesses the entire local government council as a whole, the respective organs of the local government council for both urban and rural local governments (as shown in Figure 2) are treated as independent units of analysis.

Figure 2: The Structure of the Local Government System in Uganda



The local government councils' score-card is premised on a theory of change based on the idea that by providing data and information on the performance of local political leaders, citizens will demand accountability and effective service delivery, ideally triggering a vertical spiral of demand up to the national level. An empowered citizenry will help trigger the necessary reforms that are essential to creating a conducive environment in which the delivery of services is responsive to the majority of citizens. Consequently, beyond the scores of each organ of council, the assessment seeks to establish a cause-effect relationship between the performance record of local council political leaders on the one hand, and the quality of service delivery and accountability on the other.

3 Background

Formed in 1974, Luwero District is located in central Uganda. The district is named after its main municipal centre, Luwero. Luwero District is bordered by Kayunga District to the North-East, Mukono District to the South-East, Wakiso District to the South, Nakaseke District to the West, and Nakasongola District to the North⁴. In the 1980s, Luwero District was a base for a liberation bush war that left many civilians dead. The area affected by the war is commonly known as the Luwero Triangle⁵.

Although sparsely populated in the 1980's as result of the bush war, the district has seen an increase in population with population densities rising from 99 persons per square kilometer in the 1991 census to 133 persons per square kilometer in the 2002 census. Table 1 below shows the demographic characteristics of the district.

Table 1: Demographic Indicators and Functional Age Groups

Selected Population Variable	Number	Percentage
Less than 5 years	63,695	18.7
Primary school age (6-12 years)	82,474	2.4
Population age less than 15 Years	178,880	52.4
Secondary school age (13-19 years)	55,044	16.1
Adolescents (10-24 years)	116,090	34
University Age (20-24 years)	26,448	78
Children (below 18 years)	201,297	59
Adults (18 years +)	139,945	41
Youths (18-30 years)	67,618	19.8
Working Age group (15-64 years)	149,414	43.8
Elderly (60+)	18,634	5
Girls below 16	96,299	28.2
Women of child bearing age(15-49 years)	69,001	20.2
Women (50+ years)	15,791`	4.6
Dependency Ratio		1:28
Total Population (2002)	336,600	
Population (2010 projection)	433,100	
Annual growth rate	3.2%	

Source: Luwero District DDP 2009/10-2011/12)

⁴ Luwero District (2009/10 – 2011/12) Three Year Rolling Development Plan; Pg 10

⁵ Government recently (January 2010) launched a recovery and development plan which is aimed at fixing the problems caused by the war in Luwero.

The district comprises 10 sub counties of Kamira, Butuntumula, Kikyusa, Luwero, Katikamu, Bamunanika, Ziobwe, Kalagala, Nyimbwa, Makulubita and 3 town councils of Bombo, Luwero and Wobulenzi. The district administrative headquarters are located within Luwero Town Council. Luwero District is headed by an elected council comprising the LCV Chairperson, who is supported by an Executive Committee of 5 members drawn from the elected councilors from the 13 sub counties. The council conducts business through 5 policy /Sectoral committees that deliberate policy matters and make recommendations to the full Council. The committees include: Works and technical services; Health and Education; Community development; Production, marketing and Environment; and Finance, planning, management and investment.

4 Selected Socio-Economic Indicators For Luwero District Local Government

This analysis of selected socio-economic indicators is intended to provide a basis for establishing a cause-effect analysis between the performance scores of the district council and the quality of service delivery, voice, and accountability. In an ideal situation, the quality and calibre of political leadership should translate into the quality of public services delivered in the district. In terms of service delivery, the social economic indicators and the findings from the Ministry of Local Government annual assessment portray an impressive picture that is near excellence but still faced with major challenges.

4.1 Primary Education

While the education sector boasts of increased enrollment as a result of UPE, the dropout rates especially among girls are very high in the district. Luwero District Primary Leaving Examinations (PLE) performance records are impressive with the majority of pupils passing in Division 1 and 2 as shown in Table 2. In addition, the performance in the district compares gallantly with the national average for both divisions. That notwithstanding, a big number of pupils in Luwero fail their Primary Leaving Examinations with those in the U divisions more than the national average during all the 5 years.

Table 2: PLE performance for Luwero District 2004-2008

	2004		2005		2006		2007		2008	
	Luwero	Uganda	Luwero	Uganda	Luwero	Uganda	Luwero	Uganda	Luwero	Uganda
Div 1	6.4	5.3	4.7	3.7	7.1	5.9	6.9	5.5	3.1	2.5
Div 2	36	38.1	40	39.3	46.6	47.0	45.2	45.5	33.7	30.6
Div 3	16.2	19.2	24.4	26.7	21.4	22.3	20.9	22.9	29	31.5
Div 4	19.2	17.9	15.7	15.6	12.7	12.5	12.5	11.9	13.4	14.7
U	22.3	19.5	15.2	14.4	12.2	11.5	14.6	13.3	20.8	20.1

Source: Uganda National Examination Board 2010

4.2. Road Network

Apart from the main tarmaced entries and exits in and out of Luwero, the Luwero-Kiwoko-Ngoma road is not yet tarmacked and sometimes becomes impassable especially during the rainy seasons. The Katikamu-Kikyusa road has not been developed to desirable standards. The Kasana-Mazzi is not yet tarmacked while the

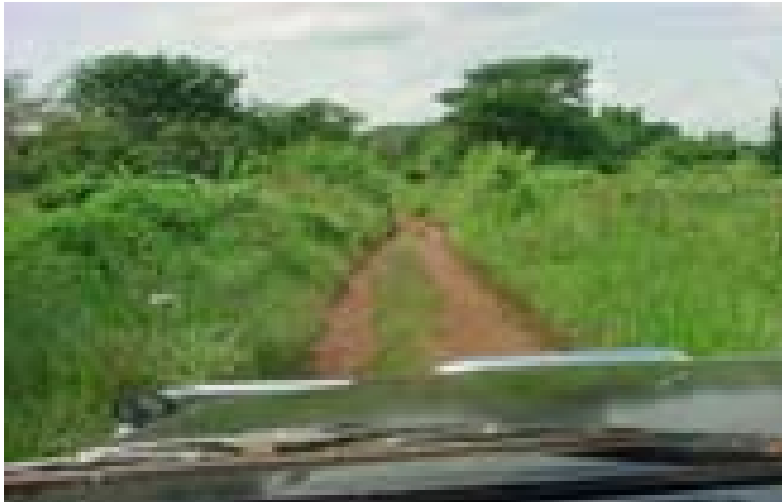


Figure 3: A road in Butuntumal Sub County. Most of the roads to the sub counties in Luwero are not only murram but in a sorry state that renders them impassable during the rainy season.

tarmacking of Matugga to Kapeka is work in progress. Similarly, the health sector is bedeviled with drug stock outs, poor staff accommodation, high levels of epidemics, malaria and anaemia especially among young children, drug shortages are a common phenomenon, dilapidated structures and gross understaffing among others. In the water and sanitation sector, access to safe

water and sanitation remains a big challenge as most of the population in the district depends on wells and springs, most of which are not protected.

5 Budget And Revenue Architecture Of Luwero Local Government

5.1 Budget Sources

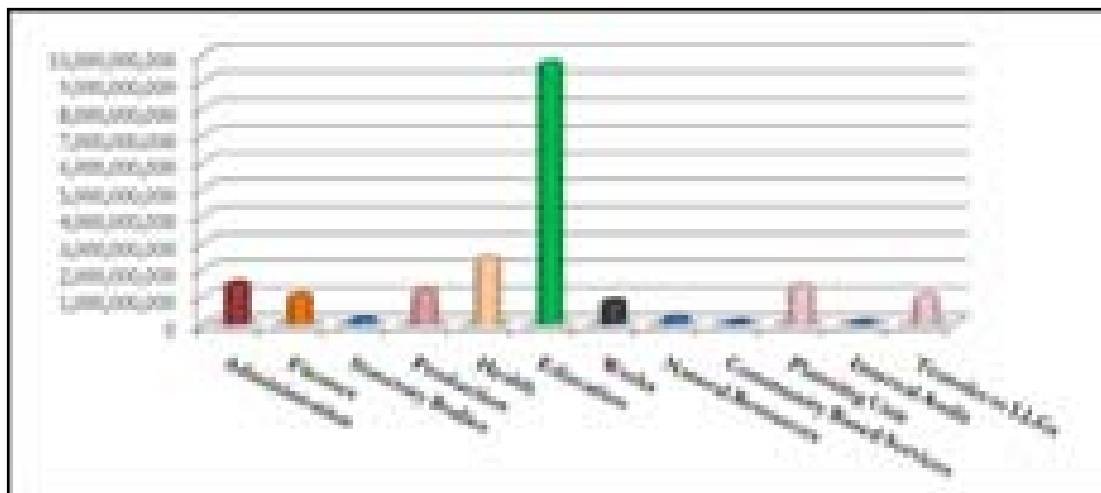
The district collects its revenue from three sources which include government grants, external funding from donors and local revenue. The district is highly dependent on central government conditional and non conditional grants. During the year under review, the district was only able to collect Ug. Shs 268,917,000 (1.3%) as its local revenue as compared to the conditional grant which totaled to Ug. Shs. 16,335,790,000/- and an unconditional grant worth Ug. Shs. 2,058,595,000/-. Furthermore contributions from donors and NGO amounted to a significant Ug. Shs. 1,047,770,000/-. In the absence of the graduated tax from which most of the local revenue used to be collected, the district's dependence on the central government transfers undermines its power, authority and independence to make local decisions that serve the interests of the people.



5.2 Budget Allocations

The assessment further analyzed the funds available to the district vis a vis the quality of service delivery.

Figure 4 District Budget Expenditure 2008/09



Source: Luwero District Budget Framework Paper 2008/09

The analysis in Figure 4 above reveals that the bulk of the district budget is spent on the education and health sectors. A reasonable amount of the budget is spent on the district administration while transfers to LLGs remained dismal during the year under review. Yet, the quality of service delivery in the priority programs and at the sub county remains poor.

6. Score-Card Findings And Interpretation

6.1 Score-Card Performance of Luwero District Council

The district local council and the sub-county council are established as corporate legal entities under the Local Government Act. At their respective levels, the councils are vested with powers and responsibilities to (i) enact local laws necessary for the effective governance of the areas within their jurisdiction; (ii) ensure accountability and transparency in the conduct of council business and utilization of council funds; (iii) ensure effective planning and budgeting to spur development and the delivery of public services to the local population; and (iv) monitor the delivery of public service on priority national programmes. The score-card performance of Luwero District was assessed on these parameters.

Luwero District council performed well with a total score of 86 points overall. This good performance is mainly attributed to the council's diligent execution of their accountability, planning, budgeting, and monitoring roles. The good performance is also attributed to the unique functionality of the client's charters through which citizens are able to hold the political leaders accountable. Poor performance on the other hand was registered in the theme of their Legislative roles. Findings from the assessment revealed that the district did not have any evidence of any ordinance passed during the year under review, an indication that the political leaders had not exploited their legislative powers fully. Furthermore, some of the district legislative resources were lacking as there was neither a functional public library nor a public relations office in which the councilors could meet their electorate at the district.

6.2 District Chairperson

The chairperson of Luwero District during the fiscal year under review was Chairman Ndawula Ronald. He was first elected in 2006. At the time of the assessment, he was serving his first term of office. According to the score-card indicators, the chairperson was assessed on the following five parameters: (i) political leadership; (ii) legislative role; (iii) contact with electorate; (iv) participation in communal and development activities; and (v) service delivery on national priority programme areas.

The chairperson garnered a total score of 80 points with the best performance record displayed under his political leadership, his regular contact with the electorate, participation in communal activities and monitoring functions. On the contrary, the chairperson performed poorly with regard to his legislative roles. While the chairperson was in regular attendance of both the plenary and committee session, there were no motions or bills passed by the executive during the year under review. Furthermore, the chairperson had not fully exploited his legislative functions to initiate or formulate any local government policies for adoption by council.

6.3 District Speaker

During the year under review, Mr. Balwana Nakibinge, who was serving his first term of office, was the district speaker. The speaker's performance assessment focused on five key parameters, namely: i) presiding and preservation of order in the council; ii) contact with electorate; iii) participation in communal and development activities; iv) participation in lower local government; and v) monitoring of service delivery on national priority programme areas, all of which are stipulated roles and responsibilities in the Local Government Act of 1997.

The speaker garnered an overall performance score of 74 points with a good performance record in his roles of presiding over and preservation of order in council as well as his participation in communal and development activities. While the performance was not poor, his performance in participation at Lower Local Governments and monitoring roles were found just above average with deficiencies revealed in a number of areas. The assessment revealed that the speaker did not have any evidence of having provided feedback to the sub county council arguing that his roles as a speaker bar him from such an engagement.

6.4 District Councilors

Political performance of individual councilors in Luwero varied considerably with the highest councilor scoring 88% while the lowest scored only 35%. A gender analysis reveals that male councilors performed better than their female counterparts with an average score of 67% as compared to 50% respectively. In addition, all the 5 best performing councilors were male while the 5 worst councilors had the majority comprising of female councilors. Overall, councilors scored highly regarding their performance of legislative functions as there was clear evidence of their participation in both the plenary and committees meetings. The assessment also reveals a fairly good performance with regard to councilors' contact with their electorate as over 60% of the councilors were able to submit more than 3 reports to council from the electorate. Poor performance was however recorded with regard to their participation in lower local governments. Findings from the assessment reveal that only 33% of the councilors consistently attended the meetings in their sub counties. Table 3 shows the detailed analysis of councilor performance disaggregated by gender.

Table 3: Performance of Luwero District Councilors Disaggregated by Gender

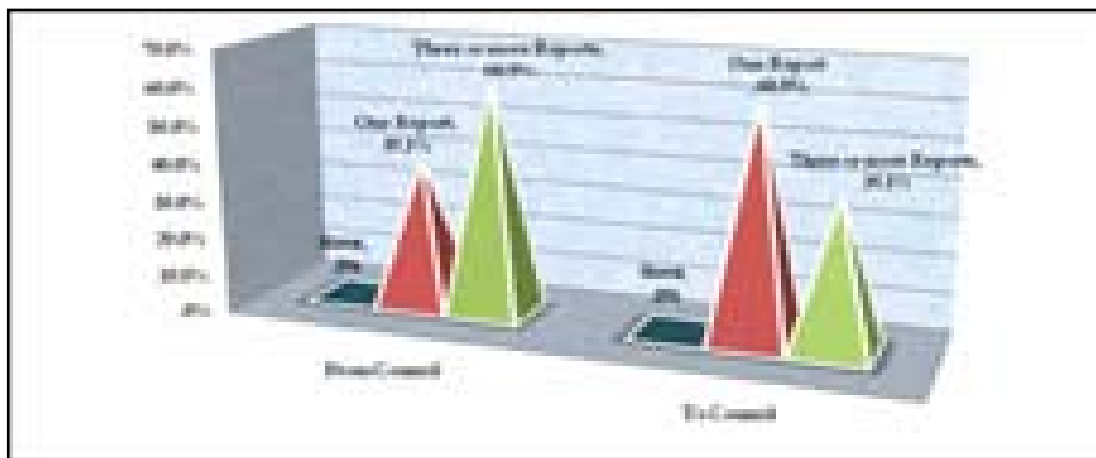
Name	Gender	Legislative Role	Contact with Electorate	Participation in communal activities	Participation in LLGs	Service delivery on NPPAs	Total
Musisi Erasmus	Male	20	17	15	10	26	88
Musoke Omar Maalo	Male	22	17	11	10	25	85
Sheik Muhammed Kadala	Male	20	20	13	10	22	85
Tebasingwa Shaban Mukiibi	Male	15	20	13	10	26	84
Sempa Stephen	Male	16	10	15	10	26	77
Bwabye Richards	Male	20	17	10	10	20	77
Jonathan Kasule	Male	19	13	11	10	16	69
Mulindwa Rogers	Male	17	16	10	10	15	68
Luboyera Kyagaba	Male	17	17	3	10	16	63
Mbaali Jjunju	Male	17	16	1	10	16	60
Makumbi Swalleh	Male	16	10	9	10	7	52
Engineer Kaweesa John	Male	15	7	10	7	9	48
Kasule Abdul	Male	15	13	5	2	11	46
Mulwana Samuel	Male	15	9	4	3	10	41
Average Score Male							67.4
Rehema Kaaya	Female	15	13	10	10	17	65
Hellen Ndawula	Female	15	13	10	10	11	59
Nalubega Carol	Female	15	12	5	10	14	56
Namulindwa Joy	Female	17	9	8	5	16	55
Nakazzi Liliika	Female	15	9	4	6	19	53
Mirembe Joyce	Female	10	17	11	0	12	50
Kayaha Aisha Shamim	Female	15	9	9	2	12	47
Ndagire Aisha	Female	15	9	5	3	15	47
Nalubega Deborah	Female	16	9	8	0	13	46
Namanja Proscovia	Female	15	9	5	3	11	43
Katende Rosette	Female	7	9	3	3	13	35
Average Score Female							50.5

6.4.1 Contact with the Electorate

Findings from the assessment in Luwero show that there was regular contact of leaders with their electorate especially in situations where councilors resided in their constituencies. Most of these councilors used their homes as their contact offices while some used shops, saloons and in one extreme place, a village restaurant. In Luwero however, cases of nonresident councilors were reported by community members who cried foul over their failure to meet with their area councilors who did not reside in the community⁶.

⁶ The community members who requested for anonymity complained of their councilor who they insisted does not only stay out of his constituency but also stays out of the district, in a Kampala. This councilors performance in attendance of sub county council meetings was also found wanting. This was verified by the project team during the review of district documents.

Figure 2: Reports of decisions of council to the Electorate and from the Electorate to council



However, evidence from our assessments in Luwero District points to the fact that the majority of councilors did not have documentary evidence or records in as far as contact with the electorate is concerned. While some have diary books and note books, others used their wall calendars while others claimed to use cell phone reminders and records.

The majority of councilors (91.3%) had documented evidence of having participated and made contributions to communal projects and activities. The projects included construction of boreholes, support to education and health facilities, tree planting, grading of village roads as well as financial support to subsistence agricultural support to subsistence agricultural activities.

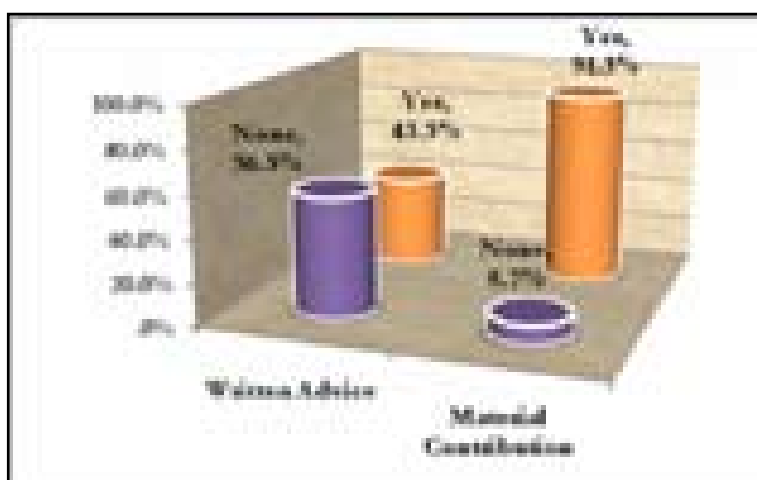


Figure 3: Councilors contributions to community and development programmes.

The above notwithstanding, our assessment and verification revealed that most of the projects were government initiated programmes where councilors played a lobbying and monitoring role. In Figure 3 above, a revelation of minimal written advice is made with 56.5% of the councilors failing to present any evidence of written advice to the community. Luwero

District is saturated with a number of local and International NGOs that work with the district to deliver services to rural communities. It is through these NGOs that some councilors have lobbied for support to vulnerable groups in various communities within the district. While most councilors made claims of lobbying and working with some NGOs, there was not enough evidence adduced to verify their contribution. In such situations, councilors would not earn the mark due to lack of evidence.

6.4.2 Participation in Lower Local Governments

While councilors expressed willingness to attend lower local government meetings (sub county council meetings) especially when invited; our assessment shows that most councilors in Luwero do not attend. This, they noted, was because they are not invited in time. The few who presented evidence of attendance maintained that invitations came late while others attended without official invitations.

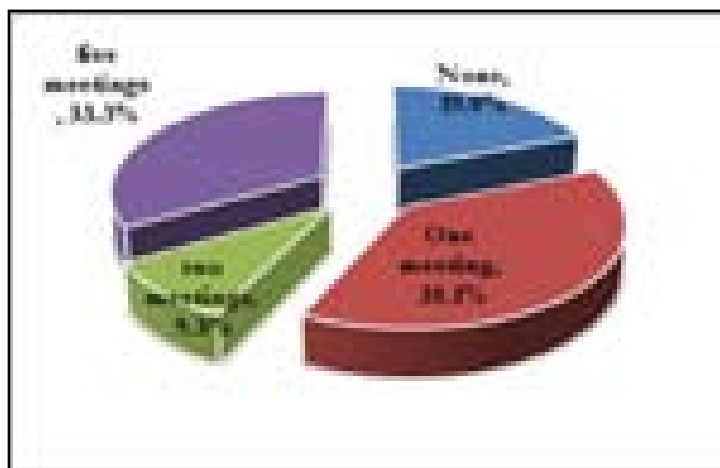


Figure 4: Participation in Lower Local Governments

Figure 4 indicates that only 33.3% of councilors in Luwero had evidence of having attended more than five meetings at the sub counties. A miserable 9.5% had evidence of attendance at two meetings while 38.1 % had only attended once. With such poor performance in attendance, there are councilors in Luwero (19.9%) who had not attended any meeting at their sub counties as shown in Figure 4 above. Such revelations indicate and justify the poor communication between the district and the sub counties in the district.

6.5 Score-Card Performance of Special Interest Group Representatives

Representation on the district council leadership includes directly elected councilors as well as special interest groups of women, youth, and the Persons with Disability (PWDs). The rationale for electing representatives of special interest groups is that, in the process of council deliberations, such representatives would ideally pursue policies and operational agendas of concern to the members of their particular groups. Such agendas might include articulating and setting specific policy priorities and influencing local council budget priorities in favor of policy and service delivery agendas that are consistent with the interests of their constituencies.

In Luwero District, all the women councilors were elected on the affirmative action ticket as women representatives. The best performing female councilor was Rehema Kaaya (65 points), while the worst performing female councilor was councilor Katende Rosette (35 points). Similarly, the female PWD councilor, Nalubega Deborah, scored 46 points, while the male PWD councilor, Kadala Mohammed, scored 85 points. The performance of the female and male youth councilors, Namulidwa Joy, were 55 and 41 points respectively. From the scores above, with the exception of the female representation on the council, it suffices to argue that besides the symbolic significance of these councilors, there is no evidence to suggest that the presence of representatives of special interest groups adds specific value to the work of the council or in shaping the policy and service delivery priorities biased towards the interests of special interest groups in Luwero .

7. Luwero District Performance and the Quality of Public Services

The good performance of Luwero District (with the district council scoring 86 points; the district speaker scoring 78 points; and councilors scoring an average of 60 points) does not explain the economic state of affairs in the district. While the council pooled the 86 points as a group, the performance of the individual councilors, especially those below average negatively impacts on the quality of service delivery in various ways. The findings paint an enviable picture with very good political performance⁷ and an improving quality of the services in the district. Ironically, despite the performance, many of the citizens in the district were ignorant of their councilors' legislative and administrative roles and responsibilities and therefore did not hold them accountable for quality service delivery. This situation is explained by both internal and external factors. This section discusses these factors and goes on to explain the paradoxical situation that surrounds service delivery in the District.

7.1 External Factors for Poor Performance and Poor Service Delivery

7.1.1 High Dependence on the Central Government

Luwero District is highly dependent on central government transfers. During FY 2008/9, central government transfers accounted for 94.6 percent, while donor contributions accounted for 5 percent, and local revenues constituted only 1 percent. This level of dependency affects the service delivery and overall performance of the district. Most grants from the central government are conditional and therefore earmarked for specific services. Only a slight degree of flexibility is permissible, but even so with restrictions. The unconditional grant, which is the only grant that local governments may use as part of their revenue, is mainly used to pay staff salaries. In many instances, these funds are not adequate, creating a funding gap. This gap means that the district has to operate below the acceptable minimum personnel structures.

7.1.2 Absence of Strategic Development Planning and Implementation Targets

Luwero District, like all other districts in Uganda, operates using the three-year rolling DDP. The budgeting and implementation of the plan takes the form of an annual work plan with very short-term targets set for every financial year. There is no strategic long-term investment plan that can provide a framework for setting long-term development targets and budget allocations. For example, the Luwero District Council has no clearly defined targets for key sectors such as education, health, roads, or even local revenue collection over a number of years. Indeed, the absence of long-

⁷ The district council scored 86% while the chairperson as the political leader of the district scored 80% and indicated in the score-cards attached in annex 1

term strategic development targets denies the council the opportunity to operate in a more strategic manner and to measure their own performance on the basis of clearly defined development and service delivery benchmarks.

7.1.3 Lack of Knowledge among the Electorate on the Civic Functions of the Council

The assessment revealed wide civic incompetence manifested in a lack of basic knowledge by the electorate regarding the key roles of councilors and the basic functions of the local government system. The electorate in Luwero District had serious misconceptions on the roles and responsibilities of councilors, and hence some within the electorate saw their councilors as people who are supposed to bury the dead, attend local parties, and make contributions to individual and community problems. They lacked knowledge on the basic functions and duties of the council—from the planning cycle of local governments, to the rights and entitlements that the electorate can expect to get from their councils. This ignorance was identified as an inhibitor for the public's participation in planning, budgeting, and implementation of the local government's programmes.

7.1.4 Political Power without Authority over Planning and Budgeting

Legally and politically, local government councils are responsible for all local government functions, including planning, financial accountability, and the delivery of public goods and services. However, Luwero political leadership holds no controlling or other appropriate authority to determine or direct how the funds allocated to the district are utilized. The Chief Administrative Officer (CAO) who is the accounting officer of the district is appointed by the central government. Additionally, the various ministries—including those responsible for local governments and finance—have developed a set of guidelines and procedures that limit the involvement of the local government councils in the management of the district's financial resources, including the procurement process. The guidelines and procedures enjoin the council to oversee the use of funds by the technical agencies of the local government, but don't permit them to get involved in the governance of these resources. This is popularly referred to as the "eyes on, hands off" approach to the governance of the financial resources of local government councils.

7.1.5 Corruption and Public Service Delivery in the District

Findings from the 2008 Auditor General's Report revealed various forms of corruption including outstanding administrative advances⁸, lack of land titles⁹, poor quality service delivery¹⁰ and loss of cash¹¹ in the district. During a separate investigation conducted by the office of the Inspector General of Government (IGG) during the year under review, cases of low ethical standards were exposed in Luwero District. The Town Clerk of Luwero District was implicated in the payment of bribe in a bid to secure his job.¹² Furthermore, the IGG directed the Chief Administrative Officer to return the appointments of two officers¹³ who were deemed to have been irregularly appointed by the DSC in a non competitive process and thus called their positions to be re-advertised¹⁴. During the year under review, the Luwero District records officer was detained at Central Police Station in Kampala for forging stamps and signatures¹⁵ in a bid to access a loan of Ug. Shs 945, 000¹⁶. Such occurrences undermine the quality and efficiency of service delivery in Luwero District.

7.1.6 Abuse of Public Office

A special audit ordered in Luwero in June 2009 by the State Minister for Primary Health exposed various forms of abuse of office including grave mismanagement in health centres¹⁷. During the audit, one health centre was visited Kasana and three health centres in Bamunanika Sub County. The health centres did not have drugs including Coartem, a recommended malaria drug that is acquired free of charge from the National Medical Stores. Furthermore, the director for health services was not resident in the district and lived in Kampala. The medical store at the District health unit had expired drugs while patients complained of having to buy paraffin to light up the wards as well as having to pay for most of the prescribed drugs.

The audit also highlighted poor monitoring on behalf of the district political leaders to whose attention the matter was not yet known. In a separate surprise visit to randomly-selected health centre IIIs including Butuntumula Health Centre III in Katikamu County, only 2 out of 10 health workers were on duty at 4:00pm, both of

⁸ Refer to the Auditor General's Report 2008 Pg 215. Administrative advances of Shs 14, 119,900 relating to 2007/8 remained unaccounted for at the end of the financial year. This contravenes regulation 43 of the Local Government Financial and accounting regulations.

⁹ In the same report, the district has land allocated to various stakeholders without land titles.

¹⁰ Three valley tanks were constructed at a total cost of Ug. Shs 79 Million but the inspection revealed eroding debris back into the dams, poorly constructed water troughs, water pumps that were not in use and communities that were not aware of the resources available to them.

¹¹ Over Ug. Shs 19 Million was lost and has been outstanding since 2001. Efforts to recover the money seemed futile as one of the officers implicated in the loss had died.

¹² Inspector General of Government Mr Raphael Baku, ordered the Luwero District Service Commission to sack Wobulenzi Town Clerk, Mr Joseph Ssebude over allegations that he offered a bribe to get the job and that the DSC who had handled the recruitment had failed to explain the inconsistencies.

¹³ The senior personnel officer Melon Nakyejwe and the secretary to the DSC Commission, Ms Specioza Namakula

¹⁴ The daily monitor Wednesday, February 24 2010

¹⁵ The officer forged stamps from the office of the Chief Administrative Officer of Luwero, the Central Registry, the Chief Financial Officer, the Principal Personnel Officer and the District accountant.

¹⁶ The New Vision, Wednesday, 25th November, 2009

¹⁷ New Vision , 3rd June, 2009

whom were midwives¹⁸. This state of affairs reveals abuse of office on the part of the technical officers in the health sector in Luwero District.

7.2 Internal Factors for Poor Performance and Poor Service Delivery

7.2.1 Quality of District Councilors and Other Capacity Issues

The quality of councilors is mainly affected by their average level of education. At the moment, there is no minimum education requirement for anyone to hold the office of a district councilor in Luwero, as is the case in all of Uganda's other districts. In fact, councilors are not required to submit any academic papers as part of the eligibility requirements to contest for the office of councilor. There is widespread consensus that councilors with very low levels of education failed to express themselves during plenary sessions, while some could not make written contributions to any committee. The low levels of education undermine effective debate and interaction among councilors and the highly educated technical staff whom they are presumably supposed to supervise. Indeed, various councilors pointed out this as one of the major challenges that some of their colleagues faced in discharging their statutory and political functions as envisaged under the Local Government Act. Evidence from the assessment showed that councilors with higher levels of education (degrees, certificates, or their equivalent) debated and contributed more significantly and objectively during plenary and committee meetings.

At the same time, ACODE's researchers noted that the recorded district council proceedings did not include appropriate attribution that could facilitate a qualitative analysis of the contributions of individual councilors. Besides, the councilors themselves did not keep coherent records of their activities and contributions.

7.2.2 Poor Record-Keeping

As noted above, councilors in Luwero District exhibited poor record-keeping in relation to their activities as elected leaders. For example although many councilors claimed to have made contributions during meetings and met with their electorate, there were no records to confirm evidence to this effect. Some councilors did not have diaries or note books while others used loose record options and cell phones that could not be tendered as evidence of performance at the time of the assessment. At the council level, it was evident that while councilors claimed to have made contributions during plenary sessions, many such contributions not recorded by the clerk to council due to errors.

¹⁸ Ibid

7.2.3 Failure of councilors to provide link between electorate and the district

It was established that many councilors are often absent from their constituencies and leave their constituencies unattended to. It is no surprise, therefore, that the indicators with the worst scores were 'contact with electorate' and 'attendance of lower local councils.' This leaves constituencies devoid of political direction and the much-needed oversight role that political leaders ought to provide. It was noted, for example, that some councilors are engaged in businesses in Southern Sudan with little time for their council activities.

On a positive note, the quality of political performance and the improving service delivery can be attributed to the functional clients' charter initiative which provides an opportunity for citizens' voice and accountability. The charter which was rolled out in 2007 specifies the standard for the delivery of services and sets out feedback and complaint handling mechanisms.¹⁹ Citizens in Luwero are empowered to hold their leaders at the district and national level accountable through a clearly stipulated feedback mechanism wherein, responses to a complaint are expected within two weeks of the complaint. The Client Charter also has the potential to empower citizens and local government officials to generate and increase local revenue for the district and has a solid structure through which citizen clients work with local government officials at the district to break down hierarchical barriers and deepening democracy at the district level.

In a bid to make the client charters more useful to the electorate in Luwero, the options of citizens' direct engagement with their political leaders and written expressions should be adopted. This will not only reduce on the need for civil actions but will continue to provide more useful platforms for discourse between the district leaders and the citizens.

¹⁹ Luwero District Client Charter July 2007

8. Recommendations And General Conclusion

The findings from the district score-card (including the 86 points garnered by the district council as a whole) do not fully explain the poor quality of services that exists within Luwero. As this report has discussed, a number of internal and external factors—structural, policy-related, and operational—are at fault for the poor state of affairs. Given this, ACODE offers the following recommendations to the council.

8.1 Advocacy for a Changed Budget Architecture

A critical analysis of the district budget reveals its high dependency on the central government. This dependency makes the district a mere agent of the central government rather than a full-fledged local government as envisaged under article 178 of the constitution. Luwero District should work with other local governments through the Uganda Local Government Association (ULGA) to advocate for a change in the current budget architecture. It is important that the national budget resources be equally shared between the central government and the local governments so that local governments do not have to depend on sectoral conditional grants.

8.2 Adopt Minimum Education Qualifications for Council Members

Although the current legal framework does not stipulate minimum academic qualifications for council members, Luwero District Council can make bylaws that require persons seeking to be members of the council to possess and present minimum qualifications of an advanced level education or its equivalent. Appropriate academic qualifications are essential in ensuring quality and robust debate in council and the supervision of council senior technical staff that are often educated up to a graduate level.

8.3 Formulate a Comprehensive and Integrated Long-Term Development Plan

Luwero District should be managed with more long-term development plan of five or ten years. Such a plan should be able to outlive regimes and their leaders. The current three-year rolling plan, which is presented in form of work plans, does not address the strategic long-term development interests of the district. For Luwero District to develop, it will need a long-term strategic plan that transcends individual leaders and personalities. Such a plan will also enable the council set long-term development targets and periodic performance benchmarks on the basis of which it can evaluate its performance and progress.

8.4 Continuous Orientation and Training for Councilors

The orientation and training offered to the council by the Ministry of Local Government should be done more systematically and regularly, ideally on an annual basis. Such orientation should cover (i) the roles and functions of the council in the delivery of public services; (ii) the mission and vision of the council; (iii) the mechanisms of accountability to the district residents; and (iv) other important development and planning related training. Councilors would then be reminded of their fundamental roles and responsibilities on a more regular basis.

8.5 Contact with the Electorate

Accessing detailed public information and the progress of project implementation in Luwero District is difficult, a situation that partly explains the low civic competence in the district. Deliberate effort by the district to establish more meaningful citizens' interface should be taken. There is clearly no platform where the district chairman and other political leaders engage in a dialogue with district residents. ACODE recommends that a "District Town Hall Platform" be convened every quarter, during which the district political leaders and technical staff can engage with the electorate to discuss the concerns of the residents in a more informal but still business-like manner. This will infuse more ideas into how the district is run and help build confidence and trust among the district leadership and the residents. Such a platform will also provide an opportunity to educate the communities about the roles and responsibilities of the councilors and the need to use such benchmarks to assess their leaders' performance.

9. Conclusion

The district Council Score-card reveals excellent performance (86 points) by the council as a whole. Indeed, the council was ranked as the best performing district council during the year under review. However, this performance does not necessarily translate into the quality of service delivery in the district. This assessment has attempted to provide some explanations for this performance and to offer potential solutions to address the current service delivery deficit in the district. The score-card administration process also raised key questions regarding the score-card methodology. The key question that will need to be addressed as part of the methodology development process is to include scores that clearly reflect the cause-effect relationship between score-card performance, the quality of service delivery, and voice and accountability. Finally, this assessment represents the most evidence-based performance assessment of the district council to date, and as such, presents an opportunity for investing in creating a more robust local government that is responsive to the service delivery needs of the district residents.

REFERENCES

Luwero District (2008). Luwero District Budget Approved 2008/2009

_____ (2008). Minutes for Ordinary Council Meeting held on 20th August 2008

_____ (2008). Minutes for Ordinary Council Meeting held on 12th Nov 2008

_____ (2009). Minutes for Ordinary Council Meeting held on 19th Dec 2008

_____ (2009). Minutes for Ordinary Council Meeting held on 29th May 2009

_____ (2009). Minutes for Ordinary Council Meeting held on 15th June 2009

_____ (2009). Minutes for Community Based Services Committe Meeting held on 12th April 2009

_____ (2009). Minutes for Community Based Services Committe Meeting held on 29th April 2009

_____ (2009). Minutes for Community Based Services Committe Meeting held on 29th June 2009

_____ (2009). Minutes for Community Based Services Committe Meeting held on 14th December 2009

_____ (2009). Minutes of the Finance, Planning, Adminstration and Investment Meeting held on 17th February 2009

_____ (2009). Minutes of the Finance, Planning, Adminstration and Investment Meeting held on 29th June 2009

_____ (2009). Minutes of the Finance, Planning, Adminstration and Investment Meeting held on 30th June 2009

_____ (2009). Minutes of the Health and Education Committee Meeting held on 18th February 2009

_____ (2009). Minutes of the Health and Education Committee Meeting held on 30th June 2009

_____ (2008). Luwero District Statistical Abstract (2008)

_____ (2008). Luwero District Budget Framework Paper 2008/09

_____ (2008). Luwero District Development plan 2007/08 - 2010/2011.

MoLG (2008). Synthesis Report for Annual National Assessment of Performance Measures and Minimum Conditions for Local Governments

MoLG (2009). Synthesis Report for Annual National Assessment Reports from Ministry of Local Government

NPA(2009). Baseline Data on Profiles, Current Service Delivery Levels and Gaps for Local Governments in Uganda

Office of the Auditor General (2009). Annual Report of the Auditor General for the Year ended 30th June 2009 Volume 3 Local Authorities

Republic of Uganda (1995), Constitution of Uganda 1995 Section 11, Articles 176-189,

_____ (1997), Local Government Act 1997,

_____ (2005), Local Government Amendment Act 2005,

_____ (2006), Local Government Amendment Act 2006

Tumushabe, G., et al (2010), Monitoring and Assessing the Performance of LG Councils in Uganda: Background, Methodology and Score-card. A CODE Policy Research Series No. 31 2010 Kampala

UBOS (2009), 2009 Statistical Abstract

Annexes

Annex 1: List of Political Leaders and Councilors in Luwero District

1	Ndawula Ronald	District Chairperson
2	Balwana Nakibinge	District Speaker Kamira
3	Musisi Erasmus	Sec Health & Education Nyimbwa
4	Mulindwa Rogers	Sec.Works Wobulenzi
5	Kayaga Aisha Shamim	Butuntumula V/C person
6	Ssempe Stephen	Kalagala (Sec.Finance)
7	Bwabye Richard	C/Person-Luwero S/Cty
8	Nalubega Carol	Bamunanika
9	Kasule Abdul	Bombo
10	Kasule Jonathan	Bamunanika
11	Kaweesa John	Zirobwe
12	Katende Rosette	Luwero
13	Kadala Mohammed (PWD)	Bombo
14	Makumbi Swalleh	Katikamu
15	Mulwana Samuel	Butuntumula
16	Namansa Proscovia	Katikamu
17	Hellen Nsereko	Zirobwe
18	Nalubega Deborah(PWD)	Katikamu
19	Mulani Mukiibi .S	Butuntumula
20	Musoko O Omaalo	Kikyusa
21	Namulindwa Joy	Luwero Dist Youth
22	Mirembe Joyce	Kamira/Kikyusa
23	Kasule Mbaalu Junju	Luwero T/C
24	Ndagire Aisha	Bombo
25	Luboyera Kyagaba	Makulubita
26	Rehema Kaaya	Kalagala
27	Nakazzi Lulika. H	Makulubita

Annex 2: Luwero District Council Score-Card**Score 86**

	DISTRICT COUNCIL	Actual Score	Maximum Score
1	LEGISLATIVE ROLE	14	20
a	Adopted model rules of Procedure with/without amendments	4	4
b	Ordinances	0	4
c	Passed motions for resolutions on policy	2	2
d	Evidence of legislative resources	2	4
e	Petitions & Focused Tours	4	4
f	Held council meetings on time	2	2
2	ACCOUNTABILITY ROLE	18	20
a	Public Accounts Committee (PAC)	2	4
b	Public Funds	4	4
c	Internal Assessment	4	4
d	Public Hearings	4	4
e	Involvement of CSOs, CBOs, Citizens	4	4
3	PLANNING & BUDGETING	11	12
a	Existence of Plans & Vision	4	4
b	Existence of Local Government Budget Framework Paper	1	1
c	Prior approval of the Development Plan before the Budget approval	1	1
d	Approved budget within time according to the law	1	1
e	Active Technical Planning Committee	1	1
f	Monitoring and Evaluation	3	4
4	SERVICE DELIVERY ON NATIONAL PRIORITY PROGRAMMES	43	48
a	Education	5	8
b	Health	8	8
c	Water and Sanitation	8	8
d	Roads	8	8
e	Agriculture and Extension	8	8
f	Functional Adult Literacy	2	3
g	Environment and Natural Resources	4	5
	Total	86	100

Annex 3: Luwero District Chairperson Score-Card
Name Ronald Ndawula
Designation Chairman
Constituency Kampala
Score: 80

CHAIRPERSON		Actual Score	Maximum Score
	POLITICAL LEADERSHIP	20	20
a	Presiding at meetings of Executive Committee	3	3
b	Monitoring and administration	5	5
c	Evidence of a report made to council on the state of affairs of the District	2	2
d	Overseeing Performance of civil servants	5	5
e	Recommended to council persons to be appointed members of DSC and other boards/committees.	5	5
	LEGISLATIVE ROLE	5	20
a	Regular attendance of Plenary sessions, Committees	5	5
b	Motions/Bills presented by the Executive and passed	0	8
c	Initiated and formulated policies	0	7
	CONTACT WITH ELECTORATE	15	15
a	Evidence of a Programme of meetings with Electorate	5	5
b	Evidence of public notice of decisions of the Council to the electorate	5	5
c	Evidence of issues raised by the electorate to the Executive /Council	5	5
	PARTICIPATION IN COMMUNAL AND DEVELOPMENT ACTIVITIES	15	15
a	Projects initiated	5	5
b	Contributions to communal Projects/activities	5	5
c	Linking the community to Development Partners/NGOs	5	5
	SERVICE DELIVERY ON NATIONAL PRIORITY PROGRAMMES AREAS	25	30
a	Monitoring and giving feedback to Council	5	5
b	Attended NAADS/PMA/other programs meetings	5	5
c	Attended functional Adult literacy session	0	5
d	Visited Health units in every Lower local government	5	5
e	Visited schools in every sub-county	5	5
f	Participated in a Radio/Television Talk show in any media	3	3
g	Environment and Natural Resources protection	2	2
	Total	80	100

Annex 4: Luwero District Speaker Score-Card
Name Balwana Nakibinge
Designation Speaker
Constituency Luwero
Score: 74

SPEAKER/DEPUTY SPEAKER		Actual Score	Maximum Score
1	PRESIDING AND PRESERVATION OF ORDER IN THE COUNCIL	23	25
a	Chairing lawful council/ meetings	2	3
b	Rules of procedure	6	6
c	Business Committee	3	3
d	Delegated to the Deputy Speaker at least once/ Evidence of deputizing the speaker in any activity	5	5
e	Evidence of a records book with Issues/ petitions presented to the office	2	2
f	Evidence of record of motions/bills presented in council	3	3
g	Provided special skills/knowledge to the Council or committees.	2	5
2	CONTACT WITH ELECTORATE	9	20
a	Evidence of a written Programme of meetings with Electorate	2	5
b	Office or coordinating centre in the constituency	5	5
c	Evidence of Reports of decisions of the Council taken to the electorate	1	5
d	Evidence of issues raised by the electorate	1	5
3	PARTICIPATION IN COMMUNAL AND DEVELOPMENT ACTIVITIES IN HIS/HER ELECTORAL AREA	13	15
a	Projects initiated	5	5
b	Contributions to communal Projects/activities	3	5
c	Linking the community to Development Partners/NGOs	5	5
4	PARTICIPATION IN LOWER LOCAL GOVERNMENT	6	10
a	Attendance in sub - county Council sessions	5	5
b	Evidence of giving feedback to the sub-county Council from District Council.	1	5
5	SERVICE DELIVERY ON NATIONAL PRIORITY PROGRAMME AREAS	23	30
a	Monitoring and giving feedback to council	5	5
b	Attended NAADS/PMA/other related programs meetings	2	5
c	Attended functional Adult literacy session	5	5
d	Visited Health units in constituent sub-county	5	5
e	Visited schools in constituent sub-county	2	5
f	Participated in a Radio/Television Talk show in any media.	2	3
g	Participated in an activity that promotes Sustainable Environment and Natural Resource Use	2	2
	TOTAL	74	100

Annex 5: Councilors' Score-Cards
Name: Musisi Erasmus
Gender: Male
Constituency: Nyimbwa
Score: 88

COUNCILOR		Actual Score	Maximum Score
	1 LEGISLATIVE ROLE	20	25
a	Participation in plenary session	5	5
b	Participation in Committees	5	5
c	Moved motion without notice	2	2
d	Moved motion on notice	3	3
e	Regular attendance of plenary	3	3
f	Regular attendance of committee	2	2
g	Special knowledge to council	0	2
h	Special knowledge to committee	0	2
g	Special knowledge Explanation on issue	0	1
	2 CONTACT WITH ELECTORATE	17	20
a	Evidence of a written Programme of meetings with Electorate	5	5
b	Existence of Office or coordinating office	2	2
c	Functional Office or coordinating office	0	3
d	Evidence of Reports of decisions of the Council taken to the electorate	5	5
e	Issues raised by electorate taken to council	5	5
	3 PARTICIPATION IN COMMUNAL AND DEVELOPMENT ACTIVITIES IN HIS/HER ELECTORAL AREA	15	15
a	Projects initiated	5	5
b	Provided Written advice as contributions to communal projects	2	2
c	Material Contributions to communal projects	3	3
d	Signed one Memorandum of Understanding (MoU) / evidence of Lobbying a development partner	3	3
e	Implemented MoU	2	2
	4 PARTICIPATION IN LOWER LOCAL GOVERNMENT	10	10
a	Attendance in sub - county Council sessions	5	5
b	Evidence of giving feedback to the sub-county Council from District Council.	5	5
	5 SERVICE DELIVERY ON NATIONAL PRIORITY PROGRAMME AREAS	26	30
a	Monitoring and giving feedback to council	5	5
b	Attended NAADS/PMA /other programs meetings	5	5
c	Attended functional Adult literacy session	5	5
d	Visited Health units in the constituent sub-county	5	5
e	Visited schools in every sub-county	5	5
f	Participated in a Radio Talk show in any media.	1	1
g	Participated in a Television Talk show in any media.	0	1
h	Written an article in a News Paper	0	1
i	Participated in an activity that promotes Sustainable Environment and Natural Resource Use	0	2
	TOTAL	88	100

Name: Musoke Omar Maalo
Gender: Male
Constituency Kikyusa
Score: 85

COUNCILOR		Actual Score	Maximum Score
	1 LEGISLATIVE ROLE	22	25
a	Participation in plenary session	5	5
b	Participation in Committees	5	5
c	Moved motion without notice	2	2
d	Moved motion on notice	0	3
e	Regular attendance of plenary	3	3
f	Regular attendance of committee	2	2
g	Special knowledge to council	2	2
h	Special knowledge to committee	2	2
g	Special knowledge Explanation on issue	1	1
	2 CONTACT WITH ELECTORATE	17	20
a	Evidence of a written Programme of meetings with Electorate	5	5
b	Existence of Office or coordinating office	2	2
c	Functional Office or coordinating office	0	3
d	Evidence of Reports of decisions of the Council taken to the electorate	5	5
e	Issues raised by electorate taken to council	5	5
	3 PARTICIPATION IN COMMUNAL AND DEVELOPMENT ACTIVITIES IN HIS/HER ELECTORAL AREA	11	15
a	Projects initiated	5	5
b	Provided Written advice as contributions to communal projects	2	2
c	Material Contributions to communal projects	3	3
d	Signed one Memorandum of Understanding (MoU) / evidence of Lobbying a development partner	1	3
e	Implemented MoU	0	2
	4 PARTICIPATION IN LOWER LOCAL GOVERNMENT	10	10
a	Attendance in sub - county Council sessions	5	5
b	Evidence of giving feedback to the sub-county Council from District Council.	5	5
	5 SERVICE DELIVERY ON NATIONAL PRIORITY PROGRAMME AREAS	25	30
a	Monitoring and giving feedback to council	5	5
b	Attended NAADS/PMA /other programs meetings	5	5
c	Attended functional Adult literacy session	5	5
d	Visited Health units in the constituent sub-county	5	5
e	Visited schools in every sub-county	5	5
f	Participated in a Radio Talk show in any media.	0	1
g	Participated in a Television Talk show in any media.	0	1
h	Written an article in a News Paper	0	1
i	Participated in an activity that promotes Sustainable Environment and Natural Resource Use	0	2
	TOTAL	85	100

Name: Sheik Muhammed Kadala
Gender: Male
Constituency: PWDs
Score: 85

COUNCILOR		Actual Score	Maximum Score
	1 LEGISLATIVE ROLE	20	25
a	Participation in plenary session	5	5
b	Participation in Committees	5	5
c	Moved motion without notice	2	2
d	Moved motion on notice	0	3
e	Regular attendance of plenary	3	3
f	Regular attendance of committee	2	2
g	Special knowledge to council	0	2
h	Special knowledge to committee	2	2
g	Special knowledge Explanation on issue	1	1
	2 CONTACT WITH ELECTORATE	20	20
a	Evidence of a written Programme of meetings with Electorate	5	5
b	Existence of Office or coordinating office	2	2
c	Functional Office or coordinating office	3	3
d	Evidence of Reports of decisions of the Council taken to the electorate	5	5
e	Issues raised by electorate taken to council	5	5
	3 PARTICIPATION IN COMMUNAL AND DEVELOPMENT ACTIVITIES IN HIS/HER ELECTORAL AREA	13	15
a	Projects initiated	5	5
b	Provided Written advice as contributions to communal projects	2	2
c	Material Contributions to communal projects	3	3
d	Signed one Memorandum of Understanding (MoU) / evidence of Lobbying a development partner	3	3
e	Implemented MoU	0	2
	4 PARTICIPATION IN LOWER LOCAL GOVERNMENT	10	10
a	Attendance in sub - county Council sessions	5	5
b	Evidence of giving feedback to the sub-county Council from District Council.	5	5
	5 SERVICE DELIVERY ON NATIONAL PRIORITY PROGRAMME AREAS	20	30
a	Monitoring and giving feedback to council	5	5
b	Attended NAADS/PMA /other programs meetings	5	5
c	Attended functional Adult literacy session	0	5
d	Visited Health units in the constituent sub-county	5	5
e	Visited schools in every sub-county	5	5
f	Participated in a Radio Talk show in any media.	0	1
g	Participated in a Television Talk show in any media.	0	1
h	Written an article in a News Paper	0	1
i	Participated in an activity that promotes Sustainable Environment and Natural Resource Use	2	2
	TOTAL	85	100

Name: Tebasingwa Shaban Mukiibi
Gender: Male
Constituency: Butuntumula
Score: 84

COUNCILOR		Actual Score	Maximum Score
1	LEGISLATIVE ROLE	15	25
a	Participation in plenary session	5	5
b	Participation in Committees	5	5
c	Moved motion without notice	0	2
d	Moved motion on notice	0	3
e	Regular attendance of plenary	3	3
f	Regular attendance of committee	2	2
g	Special knowledge to council	0	2
h	Special knowledge to committee	0	2
g	Special knowledge Explanation on issue	0	1
2	CONTACT WITH ELECTORATE	20	20
a	Evidence of a written Programme of meetings with Electorate	5	5
b	Existence of Office or coordinating office	2	2
c	Functional Office or coordinating office	3	3
d	Evidence of Reports of decisions of the Council taken to the electorate	5	5
e	Issues raised by electorate taken to council	5	5
3	PARTICIPATION IN COMMUNAL AND DEVELOPMENT ACTIVITIES IN HIS/HER ELECTORAL AREA	13	15
a	Projects initiated	5	5
b	Provided Written advice as contributions to communal projects	2	2
c	Material Contributions to communal projects	3	3
d	Signed one Memorandum of Understanding (MoU) / evidence of Lobbying a development partner	3	3
e	Implemented MoU	0	2
4	PARTICIPATION IN LOWER LOCAL GOVERNMENT	10	10
a	Attendance in sub - county Council sessions	5	5
b	Evidence of giving feedback to the sub-county Council from District Council.	5	5
5	SERVICE DELIVERY ON NATIONAL PRIORITY PROGRAMME AREAS	26	30
a	Monitoring and giving feedback to council	5	5
b	Attended NAADS/PMA /other programs meetings	5	5
c	Attended functional Adult literacy session	5	5
d	Visited Health units in the constituent sub-county	5	5
e	Visited schools in every sub-county	2	5
f	Participated in a Radio Talk show in any media.	1	1
g	Participated in a Television Talk show in any media.	1	1
h	Written an article in a News Paper	0	1
i	Participated in an activity that promotes Sustainable Environment and Natural Resource Use	2	2
TOTAL		84	100

Name: Sempa Stephen
Gender: Male
Constituency: Kalagala
Score: 77

COUNCILOR		Actual Score	Maximum Score
	1 LEGISLATIVE ROLE	16	25
a	Participation in plenary session	5	5
b	Participation in Committees	5	5
c	Moved motion without notice	0	2
d	Moved motion on notice	0	3
e	Regular attendance of plenary	3	3
f	Regular attendance of committee	2	2
g	Special knowledge to council	0	2
h	Special knowledge to committee	0	2
g	Special knowledge Explanation on issue	1	1
	2 CONTACT WITH ELECTORATE	10	20
a	Evidence of a written Programme of meetings with Electorate	2	5
b	Existence of Office or coordinating office	2	2
c	Functional Office or coordinating office	0	3
d	Evidence of Reports of decisions of the Council taken to the electorate	5	5
e	Issues raised by electorate taken to council	1	5
	3 PARTICIPATION IN COMMUNAL AND DEVELOPMENT ACTIVITIES IN HIS/HER ELECTORAL AREA	15	15
a	Projects initiated	5	5
b	Provided Written advice as contributions to communal projects	2	2
c	Material Contributions to communal projects	3	3
d	Signed one Memorandum of Understanding (MoU) / evidence of Lobbying a development partner	3	3
e	Implemented MoU	2	2
	4 PARTICIPATION IN LOWER LOCAL GOVERNMENT	10	10
a	Attendance in sub - county Council sessions	5	5
b	Evidence of giving feedback to the sub-county Council from District Council.	5	5
	5 SERVICE DELIVERY ON NATIONAL PRIORITY PROGRAMME AREAS	26	30
a	Monitoring and giving feedback to council	5	5
b	Attended NAADS/PMA /other programs meetings	5	5
c	Attended functional Adult literacy session	2	5
d	Visited Health units in the constituent sub-county	5	5
e	Visited schools in every sub-county	5	5
f	Participated in a Radio Talk show in any media.	1	1
g	Participated in a Television Talk show in any media.	1	1
h	Written an article in a News Paper	0	1
i	Participated in an activity that promotes Sustainable Environment and Natural Resource Use	2	2
	TOTAL	77	100

Name: Bwabye Richards
Gender: Male
Constituency: Luwero S/C
Score: 77

COUNCILOR		Actual Score	Maximum Score
1	LEGISLATIVE ROLE	20	25
a	Participation in plenary session	5	5
b	Participation in Committees	5	5
c	Moved motion without notice	2	2
d	Moved motion on notice	3	3
e	Regular attendance of plenary	3	3
f	Regular attendance of committee	2	2
g	Special knowledge to council	0	2
h	Special knowledge to committee	0	2
g	Special knowledge Explanation on issue	0	1
2	CONTACT WITH ELECTORATE	17	20
a	Evidence of a written Programme of meetings with Electorate	5	5
b	Existence of Office or coordinating office	2	2
c	Functional Office or coordinating office	0	3
d	Evidence of Reports of decisions of the Council taken to the electorate	5	5
e	Issues raised by electorate taken to council	5	5
3	PARTICIPATION IN COMMUNAL AND DEVELOPMENT ACTIVITIES IN HIS/HER ELECTORAL AREA	10	15
a	Projects initiated	5	5
b	Provided Written advice as contributions to communal projects	2	2
c	Material Contributions to communal projects	3	3
d	Signed one Memorandum of Understanding (MoU) / evidence of Lobbying a development partner	0	3
e	Implemented MoU	0	2
4	PARTICIPATION IN LOWER LOCAL GOVERNMENT	10	10
a	Attendance in sub - county Council sessions	5	5
b	Evidence of giving feedback to the sub-county Council from District Council.	5	5
5	SERVICE DELIVERY ON NATIONAL PRIORITY PROGRAMME AREAS	20	30
a	Monitoring and giving feedback to council	5	5
b	Attended NAADS/PMA /other programs meetings	5	5
c	Attended functional Adult literacy session	0	5
d	Visited Health units in the constituent sub-county	5	5
e	Visited schools in every sub-county	5	5
f	Participated in a Radio Talk show in any media.	0	1
g	Participated in a Television Talk show in any media.	0	1
h	Written an article in a News Paper	0	1
i	Participated in an activity that promotes Sustainable Environment and Natural Resource Use	0	2
TOTAL		77	100

Name: Jonathan Kasule
Gender: Male
Constituency Bamunanika
Score: 69

COUNCILOR		Actual Score	Maximum Score
1	LEGISLATIVE ROLE	19	25
a	Participation in plenary session	5	5
b	Participation in Committees	5	5
c	Moved motion without notice	2	2
d	Moved motion on notice	0	3
e	Regular attendance of plenary	3	3
f	Regular attendance of committee	2	2
g	Special knowledge to council	2	2
h	Special knowledge to committee	0	2
g	Special knowledge Explanation on issue	0	1
2	CONTACT WITH ELECTORATE	13	20
a	Evidence of a written Programme of meetings with Electorate	5	5
b	Existence of Office or coordinating office	2	2
c	Functional Office or coordinating office	0	3
d	Evidence of Reports of decisions of the Council taken to the electorate	5	5
e	Issues raised by electorate taken to council	1	5
3	PARTICIPATION IN COMMUNAL AND DEVELOPMENT ACTIVITIES IN HIS/HER ELECTORAL AREA	11	15
a	Projects initiated	5	5
b	Provided Written advice as contributions to communal projects	2	2
c	Material Contributions to communal projects	3	3
d	Signed one Memorandum of Understanding (MoU) / evidence of Lobbying a development partner	1	3
e	Implemented MoU	0	2
4	PARTICIPATION IN LOWER LOCAL GOVERNMENT	10	10
a	Attendance in sub - county Council sessions	5	5
b	Evidence of giving feedback to the sub-county Council from District Council.	5	5
5	SERVICE DELIVERY ON NATIONAL PRIORITY PROGRAMME AREAS	16	30
a	Monitoring and giving feedback to council	0	5
b	Attended NAADS/PMA /other programs meetings	5	5
c	Attended functional Adult literacy session	2	5
d	Visited Health units in the constituent sub-county	2	5
e	Visited schools in every sub-county	5	5
f	Participated in a Radio Talk show in any media.	0	1
g	Participated in a Television Talk show in any media.	0	1
h	Written an article in a News Paper	0	1
i	Participated in an activity that promotes Sustainable Environment and Natural Resource Use	2	2
TOTAL		69	100

Name: Mulindwa Rogers
Gender: Male
Constituency: Wobulenzi T/C
Score: 68

COUNCILOR		Actual Score	Maximum Score
1	LEGISLATIVE ROLE	17	25
a	Participation in plenary session	5	5
b	Participation in Committees	5	5
c	Moved motion without notice	0	2
d	Moved motion on notice	0	3
e	Regular attendance of plenary	3	3
f	Regular attendance of committee	2	2
g	Special knowledge to council	0	2
h	Special knowledge to committee	2	2
g	Special knowledge Explanation on issue	0	1
2	CONTACT WITH ELECTORATE	16	20
a	Evidence of a written Programme of meetings with Electorate	5	5
b	Existence of Office or coordinating office	2	2
c	Functional Office or coordinating office	3	3
d	Evidence of Reports of decisions of the Council taken to the electorate	5	5
e	Issues raised by electorate taken to council	1	5
3	PARTICIPATION IN COMMUNAL AND DEVELOPMENT ACTIVITIES IN HIS/HER ELECTORAL AREA	10	15
a	Projects initiated	5	5
b	Provided Written advice as contributions to communal projects	2	2
c	Material Contributions to communal projects	3	3
d	Signed one Memorandum of Understanding (MoU) / evidence of Lobbying a development partner	0	3
e	Implemented MoU	0	2
4	PARTICIPATION IN LOWER LOCAL GOVERNMENT	10	10
a	Attendance in sub - county Council sessions	5	5
b	Evidence of giving feedback to the sub-county Council from District Council.	5	5
	5 SERVICE DELIVERY ON NATIONAL PRIORITY PROGRAMME AREAS	15	30
a	Monitoring and giving feedback to council	0	5
b	Attended NAADS/PMA /other programs meetings	2	5
c	Attended functional Adult literacy session	0	5
d	Visited Health units in the constituent sub-county	5	5
e	Visited schools in every sub-county	5	5
f	Participated in a Radio Talk show in any media.	1	1
g	Participated in a Television Talk show in any media.	1	1
h	Written an article in a News Paper	1	1
i	Participated in an activity that promotes Sustainable Environment and Natural Resource Use	0	2
	TOTAL	68	100

Name: Rehema Kaaya
Gender: Male
Constituency: Kalagala
Score: 65

COUNCILOR		Actual Score	Maximum Score
1	LEGISLATIVE ROLE	15	25
a	Participation in plenary session	5	5
b	Participation in Committees	5	5
c	Moved motion without notice	0	2
d	Moved motion on notice	0	3
e	Regular attendance of plenary	3	3
f	Regular attendance of committee	2	2
g	Special knowledge to council	0	2
h	Special knowledge to committee	0	2
g	Special knowledge Explanation on issue	0	1
2	CONTACT WITH ELECTORATE	13	20
a	Evidence of a written Programme of meetings with Electorate	5	5
b	Existence of Office or coordinating office	2	2
c	Functional Office or coordinating office	0	3
d	Evidence of Reports of decisions of the Council taken to the electorate	5	5
e	Issues raised by electorate taken to council	1	5
3	PARTICIPATION IN COMMUNAL AND DEVELOPMENT ACTIVITIES IN HIS/HER ELECTORAL AREA	10	15
a	Projects initiated	5	5
b	Provided Written advice as contributions to communal projects	2	2
c	Material Contributions to communal projects	3	3
d	Signed one Memorandum of Understanding (MoU) / evidence of Lobbying a development partner	0	3
e	Implemented MoU	0	2
4	PARTICIPATION IN LOWER LOCAL GOVERNMENT	10	10
a	Attendance in sub - county Council sessions	5	5
b	Evidence of giving feedback to the sub-county Council from District Council.	5	5
5	SERVICE DELIVERY ON NATIONAL PRIORITY PROGRAMME AREAS	17	30
a	Monitoring and giving feedback to council	2	5
b	Attended NAADS/PMA /other programs meetings	5	5
c	Attended functional Adult literacy session	0	5
d	Visited Health units in the constituent sub-county	5	5
e	Visited schools in every sub-county	5	5
f	Participated in a Radio Talk show in any media.	0	1
g	Participated in a Television Talk show in any media.	0	1
h	Written an article in a News Paper	0	1
i	Participated in an activity that promotes Sustainable Environment and Natural Resource Use	0	2
TOTAL		65	100

Name: Luboyera Kyagaba
Gender: Male
Constituency: Makulubita
Score: 63

COUNCILOR		Actual Score	Maximum Score
	1 LEGISLATIVE ROLE	17	25
a	Participation in plenary session	5	5
b	Participation in Committees	5	5
c	Moved motion without notice	2	2
d	Moved motion on notice	0	3
e	Regular attendance of plenary	3	3
f	Regular attendance of committee	2	2
g	Special knowledge to council	0	2
h	Special knowledge to committee	0	2
g	Special knowledge Explanation on issue	0	1
	2 CONTACT WITH ELECTORATE	17	20
a	Evidence of a written Programme of meetings with Electorate	5	5
b	Existence of Office or coordinating office	2	2
c	Functional Office or coordinating office	0	3
d	Evidence of Reports of decisions of the Council taken to the electorate	5	5
e	Issues raised by electorate taken to council	5	5
	3. PARTICIPATION IN COMMUNAL AND DEVELOPMENT ACTIVITIES IN HIS/HER ELECTORAL AREA	3	15
a	Projects initiated	0	5
b	Provided Written advice as contributions to communal projects	0	2
c	Material Contributions to communal projects	3	3
d	Signed one Memorandum of Understanding (MoU) / evidence of Lobbying a development partner	0	3
e	Implemented MoU	0	2
	4 PARTICIPATION IN LOWER LOCAL GOVERNMENT	10	10
a	Attendance in sub - county Council sessions	5	5
b	Evidence of giving feedback to the sub-county Council from District Council.	5	5
	5 SERVICE DELIVERY ON NATIONAL PRIORITY PROGRAMME AREAS	16	30
a	Monitoring and giving feedback to council	2	5
b	Attended NAADS/PMA /other programs meetings	2	5
c	Attended functional Adult literacy session	2	5
d	Visited Health units in the constituent sub-county	5	5
e	Visited schools in every sub-county	5	5
f	Participated in a Radio Talk show in any media.	0	1
g	Participated in a Television Talk show in any media.	0	1
h	Written an article in a News Paper	0	1
i	Participated in an activity that promotes Sustainable Environment and Natural Resource Use	0	2
	TOTAL	63	100

Name: Mbaali Jjunju
 Gender: Male
 Constituency: Luwero TC
 Score: 60

COUNCILOR		Actual Score	Maximum Score
	1 LEGISLATIVE ROLE	17	25
a	Participation in plenary session	5	5
b	Participation in Committees	5	5
c	Moved motion without notice	0	2
d	Moved motion on notice	0	3
e	Regular attendance of plenary	3	3
f	Regular attendance of committee	2	2
g	Special knowledge to council	2	2
h	Special knowledge to committee	0	2
g	Special knowledge Explanation on issue	0	1
	2 CONTACT WITH ELECTORATE	16	20
a	Evidence of a written Programme of meetings with Electorate	5	5
b	Existence of Office or coordinating office	2	2
c	Functional Office or coordinating office	3	3
d	Evidence of Reports of decisions of the Council taken to the electorate	5	5
e	Issues raised by electorate taken to council	1	5
	3. PARTICIPATION IN COMMUNAL AND DEVELOPMENT ACTIVITIES IN HIS/HER ELECTORAL AREA	1	15
a	Projects initiated	1	5
b	Provided Written advice as contributions to communal projects	0	2
c	Material Contributions to communal projects	0	3
d	Signed one Memorandum of Understanding (MoU) / evidence of Lobbying a development partner	0	3
e	Implemented MoU	0	2
	4 PARTICIPATION IN LOWER LOCAL GOVERNMENT	10	10
a	Attendance in sub - county Council sessions	5	5
b	Evidence of giving feedback to the sub-county Council from District Council.	5	5
	5 SERVICE DELIVERY ON NATIONAL PRIORITY PROGRAMME AREAS	16	30
a	Monitoring and giving feedback to council	0	5
b	Attended NAADS/PMA /other programs meetings	0	5
c	Attended functional Adult literacy session	5	5
d	Visited Health units in the constituent sub-county	5	5
e	Visited schools in every sub-county	5	5
f	Participated in a Radio Talk show in any media.	1	1
g	Participated in a Television Talk show in any media.	0	1
h	Written an article in a News Paper	0	1
i	Participated in an activity that promotes Sustainable Environment and Natural Resource Use	0	2
	TOTAL	60	100

Name: Hellen Ndawula
Gender: Female
Constituency: Zirobwe
Score: 59

COUNCILOR		Actual Score	Maximum Score
1	LEGISLATIVE ROLE	15	25
a	Participation in plenary session	5	5
b	Participation in Committees	5	5
c	Moved motion without notice	0	2
d	Moved motion on notice	0	3
e	Regular attendance of plenary	3	3
f	Regular attendance of committee	2	2
g	Special knowledge to council	0	2
h	Special knowledge to committee	0	2
g	Special knowledge Explanation on issue	0	1
2	CONTACT WITH ELECTORATE	13	20
a	Evidence of a written Programme of meetings with Electorate	5	5
b	Existence of Office or coordinating office	2	2
c	Functional Office or coordinating office	0	3
d	Evidence of Reports of decisions of the Council taken to the electorate	5	5
e	Issues raised by electorate taken to council	1	5
	3. PARTICIPATION IN COMMUNAL AND DEVELOPMENT ACTIVITIES IN HIS/HER ELECTORAL AREA	10	15
a	Projects initiated	5	5
b	Provided Written advice as contributions to communal projects	2	2
c	Material Contributions to communal projects	3	3
d	Signed one Memorandum of Understanding (MoU) / evidence of Lobbying a development partner	0	3
e	Implemented MoU	0	2
4	PARTICIPATION IN LOWER LOCAL GOVERNMENT	10	10
a	Attendance in sub - county Council sessions	5	5
b	Evidence of giving feedback to the sub-county Council from District Council.	5	5
	5 SERVICE DELIVERY ON NATIONAL PRIORITY PROGRAMME AREAS	11	30
a	Monitoring and giving feedback to council	0	5
b	Attended NAADS/PMA /other programs meetings	2	5
c	Attended functional Adult literacy session	2	5
d	Visited Health units in the constituent sub-county	5	5
e	Visited schools in every sub-county	0	5
f	Participated in a Radio Talk show in any media.	0	1
g	Participated in a Television Talk show in any media.	0	1
h	Written an article in a News Paper	0	1
i	Participated in an activity that promotes Sustainable Environment and Natural Resource Use	2	2
	TOTAL	59	100

Name: Nalubega Carol
Gender: Female
Constituency: Bamunanika
Score: 56

COUNCILOR		Actual Score	Maximum Score
1	LEGISLATIVE ROLE	15	25
a	Participation in plenary session	5	5
b	Participation in Committees	5	5
c	Moved motion without notice	0	2
d	Moved motion on notice	0	3
e	Regular attendance of plenary	3	3
f	Regular attendance of committee	2	2
g	Special knowledge to council	0	2
h	Special knowledge to committee	0	2
g	Special knowledge Explanation on issue	0	1
2	CONTACT WITH ELECTORATE	12	20
a	Evidence of a written Programme of meetings with Electorate	0	5
b	Existence of Office or coordinating office	2	2
c	Functional Office or coordinating office	0	3
d	Evidence of Reports of decisions of the Council taken to the electorate	5	5
e	Issues raised by electorate taken to council	5	5
3	PARTICIPATION IN COMMUNAL AND DEVELOPMENT ACTIVITIES IN HIS/HER ELECTORAL AREA	5	15
a	Projects initiated	5	5
b	Provided Written advice as contributions to communal projects	0	2
c	Material Contributions to communal projects	0	3
d	Signed one Memorandum of Understanding (MoU) / evidence of Lobbying a development partner	0	3
e	Implemented MoU	0	2
4	PARTICIPATION IN LOWER LOCAL GOVERNMENT	10	10
a	Attendance in sub - county Council sessions	5	5
b	Evidence of giving feedback to the sub-county Council from District Council.	5	5
5	SERVICE DELIVERY ON NATIONAL PRIORITY PROGRAMME AREAS	14	30
a	Monitoring and giving feedback to council	2	5
b	Attended NAADS/PMA /other programs meetings	5	5
c	Attended functional Adult literacy session	0	5
d	Visited Health units in the constituent sub-county	2	5
e	Visited schools in every sub-county	5	5
f	Participated in a Radio Talk show in any media.	0	1
g	Participated in a Television Talk show in any media.	0	1
h	Written an article in a News Paper	0	1
i	Participated in an activity that promotes Sustainable Environment and Natural Resource Use	0	2
TOTAL		56	100

Name: Namulindwa Joy
Gender: Female
Constituency: Youth
Score: 55

COUNCILOR		Actual Score	Maximum Score
1	LEGISLATIVE ROLE	17	25
a	Participation in plenary session	5	5
b	Participation in Committees	5	5
c	Moved motion without notice	2	2
d	Moved motion on notice	0	3
e	Regular attendance of plenary	3	3
f	Regular attendance of committee	2	2
g	Special knowledge to council	0	2
h	Special knowledge to committee	0	2
g	Special knowledge Explanation on issue	0	1
2	CONTACT WITH ELECTORATE	9	20
a	Evidence of a written Programme of meetings with Electorate	2	5
b	Existence of Office or coordinating office	2	2
c	Functional Office or coordinating office	3	3
d	Evidence of Reports of decisions of the Council taken to the electorate	1	5
e	Issues raised by electorate taken to council	1	5
3	PARTICIPATION IN COMMUNAL AND DEVELOPMENT ACTIVITIES IN HIS/HER ELECTORAL AREA	8	15
a	Projects initiated	5	5
b	Provided Written advice as contributions to communal projects	0	2
c	Material Contributions to communal projects	3	3
d	Signed one Memorandum of Understanding (MoU) / evidence of Lobbying a development partner	0	3
e	Implemented MoU	0	2
4	PARTICIPATION IN LOWER LOCAL GOVERNMENT	5	10
a	Attendance in sub - county Council sessions	5	5
b	Evidence of giving feedback to the sub-county Council from District Council.	0	5
5	SERVICE DELIVERY ON NATIONAL PRIORITY PROGRAMME AREAS	16	30
a	Monitoring and giving feedback to council	5	5
b	Attended NAADS/PMA /other programs meetings	2	5
c	Attended functional Adult literacy session	2	5
d	Visited Health units in the constituent sub-county	2	5
e	Visited schools in every sub-county	2	5
f	Participated in a Radio Talk show in any media.	1	1
g	Participated in a Television Talk show in any media.	0	1
h	Written an article in a News Paper	0	1
i	Participated in an activity that promotes Sustainable Environment and Natural Resource Use	2	2
	TOTAL	55	100

Name: Nakazzi Liliika
Gender: Female
Constituency: Makulubita
Score: 53

COUNCILOR		Actual Score	Maximum Score
1	LEGISLATIVE ROLE	15	25
a	Participation in plenary session	5	5
b	Participation in Committees	3	5
c	Moved motion without notice	2	2
d	Moved motion on notice	0	3
e	Regular attendance of plenary	3	3
f	Regular attendance of committee	2	2
g	Special knowledge to council	0	2
h	Special knowledge to committee	0	2
g	Special knowledge Explanation on issue	0	1
2	CONTACT WITH ELECTORATE	9	20
a	Evidence of a written Programme of meetings with Electorate	5	5
b	Existence of Office or coordinating office	2	2
c	Functional Office or coordinating office	0	3
d	Evidence of Reports of decisions of the Council taken to the electorate	1	5
e	Issues raised by electorate taken to council	1	5
3	PARTICIPATION IN COMMUNAL AND DEVELOPMENT ACTIVITIES IN HIS/HER ELECTORAL AREA	4	15
a	Projects initiated	1	5
b	Provided Written advice as contributions to communal projects	0	2
c	Material Contributions to communal projects	3	3
d	Signed one Memorandum of Understanding (MoU) / evidence of Lobbying a development partner	0	3
e	Implemented MoU	0	2
4	PARTICIPATION IN LOWER LOCAL GOVERNMENT	6	10
a	Attendance in sub - county Council sessions	5	5
b	Evidence of giving feedback to the sub-county Council from District Council.	1	5
5	SERVICE DELIVERY ON NATIONAL PRIORITY PROGRAMME AREAS	19	30
a	Monitoring and giving feedback to council	5	5
b	Attended NAADS/PMA /other programs meetings	2	5
c	Attended functional Adult literacy session	0	5
d	Visited Health units in the constituent sub-county	5	5
e	Visited schools in every sub-county	5	5
f	Participated in a Radio Talk show in any media.	0	1
g	Participated in a Television Talk show in any media.	0	1
h	Written an article in a News Paper	0	1
i	Participated in an activity that promotes Sustainable Environment and Natural Resource Use	2	2
TOTAL		53	100

Name: Makumbi Swalleh
Gender: Male
Constituency: Katikamu
Score: 52

COUNCILOR		Actual Score	Maximum Score
	1 LEGISLATIVE ROLE	16	25
a	Participation in plenary session	5	5
b	Participation in Committees	5	5
c	Moved motion without notice	0	2
d	Moved motion on notice	0	3
e	Regular attendance of plenary	3	3
f	Regular attendance of committee	2	2
g	Special knowledge to council	0	2
h	Special knowledge to committee	0	2
g	Special knowledge Explanation on issue	1	1
	2 CONTACT WITH ELECTORATE	1	20
a	Evidence of a written Programme of meetings with Electorate	0	5
b	Existence of Office or coordinating office	0	2
c	Functional Office or coordinating office	0	3
d	Evidence of Reports of decisions of the Council taken to the electorate	5	5
e	Issues raised by electorate taken to council	5	5
	3 PARTICIPATION IN COMMUNAL AND DEVELOPMENT ACTIVITIES IN HIS/HER ELECTORAL AREA	9	15
a	Projects initiated	5	5
b	Provided Written advice as contributions to communal projects	0	2
c	Material Contributions to communal projects	3	3
d	Signed one Memorandum of Understanding (MoU) / evidence of Lobbying a development partner	1	3
e	Implemented MoU	0	2
	4 PARTICIPATION IN LOWER LOCAL GOVERNMENT	10	10
a	Attendance in sub - county Council sessions	5	5
b	Evidence of giving feedback to the sub-county Council from District Council.	5	5
	5 SERVICE DELIVERY ON NATIONAL PRIORITY PROGRAMME AREAS	7	30
a	Monitoring and giving feedback to council	2	5
b	Attended NAADS/PMA /other programs meetings	5	5
c	Attended functional Adult literacy session	0	5
d	Visited Health units in the constituent sub-county	0	5
e	Visited schools in every sub-county	0	5
f	Participated in a Radio Talk show in any media.	0	1
g	Participated in a Television Talk show in any media.	0	1
h	Written an article in a News Paper	0	1
i	Participated in an activity that promotes Sustainable Environment and Natural Resource Use	0	2
	TOTAL	52	100

Name: Mirembe Joyce
Gender: Female
Constituency: Kamira/Kikyusa
Score: 50

COUNCILOR		Actual Score	Maximum Score
	1 LEGISLATIVE ROLE	10	25
a	Participation in plenary session	0	5
b	Participation in Committees	0	5
c	Moved motion without notice	2	2
d	Moved motion on notice	3	3
e	Regular attendance of plenary	3	3
f	Regular attendance of committee	2	2
g	Special knowledge to council	0	2
h	Special knowledge to committee	0	2
g	Special knowledge Explanation on issue	0	1
	2 CONTACT WITH ELECTORATE	17	20
a	Evidence of a written Programme of meetings with Electorate	5	5
b	Existence of Office or coordinating office	2	2
c	Functional Office or coordinating office	0	3
d	Evidence of Reports of decisions of the Council taken to the electorate	5	5
e	Issues raised by electorate taken to council	5	5
	3 PARTICIPATION IN COMMUNAL AND DEVELOPMENT ACTIVITIES IN HIS/HER ELECTORAL AREA	11	15
a	Projects initiated	5	5
b	Provided Written advice as contributions to communal projects	2	2
c	Material Contributions to communal projects	3	3
d	Signed one Memorandum of Understanding (MoU) / evidence of Lobbying a development partner	1	3
e	Implemented MoU	0	2
	4 PARTICIPATION IN LOWER LOCAL GOVERNMENT	0	10
a	Attendance in sub - county Council sessions	0	5
b	Evidence of giving feedback to the sub-county Council from District Council.	0	5
	5 SERVICE DELIVERY ON NATIONAL PRIORITY PROGRAMME AREAS	12	30
a	Monitoring and giving feedback to council	2	5
b	Attended NAADS/PMA /other programs meetings	0	5
c	Attended functional Adult literacy session	0	5
d	Visited Health units in the constituent sub-county	5	5
e	Visited schools in every sub-county	5	5
f	Participated in a Radio Talk show in any media.	0	1
g	Participated in a Television Talk show in any media.	0	1
h	Written an article in a News Paper	0	1
i	Participated in an activity that promotes Sustainable Environment and Natural Resource Use	0	2
	TOTAL	50	100

Name: Engineer Kaweesa John
Gender: Male
Constituency: Zirobwe
Score: 48

COUNCILOR		Actual Score	Maximum Score
1	LEGISLATIVE ROLE	15	25
a	Participation in plenary session	5	5
b	Participation in Committees	5	5
c	Moved motion without notice	0	2
d	Moved motion on notice	0	3
e	Regular attendance of plenary	3	3
f	Regular attendance of committee	2	2
g	Special knowledge to council	0	2
h	Special knowledge to committee	0	2
g	Special knowledge Explanation on issue	0	1
2	CONTACT WITH ELECTORATE	7	20
a	Evidence of a written Programme of meetings with Electorate	0	5
b	Existence of Office or coordinating office	2	2
c	Functional Office or coordinating office	0	3
d	Evidence of Reports of decisions of the Council taken to the electorate	5	5
e	Issues raised by electorate taken to council	0	5
3	PARTICIPATION IN COMMUNAL AND DEVELOPMENT ACTIVITIES IN HIS/HER ELECTORAL AREA	10	15
a	Projects initiated	5	5
b	Provided Written advice as contributions to communal projects	2	2
c	Material Contributions to communal projects	3	3
d	Signed one Memorandum of Understanding (MoU) / evidence of Lobbying a development partner	0	3
e	Implemented MoU	0	2
4	PARTICIPATION IN LOWER LOCAL GOVERNMENT	7	10
a	Attendance in sub - county Council sessions	2	5
b	Evidence of giving feedback to the sub-county Council from District Council.	5	5
5	SERVICE DELIVERY ON NATIONAL PRIORITY PROGRAMME AREAS	7	30
a	Monitoring and giving feedback to council	2	5
b	Attended NAADS/PMA /other programs meetings	0	5
c	Attended functional Adult literacy session	0	5
d	Visited Health units in the constituent sub-county	5	5
e	Visited schools in every sub-county	0	5
f	Participated in a Radio Talk show in any media.	0	1
g	Participated in a Television Talk show in any media.	0	1
h	Written an article in a News Paper	0	1
i	Participated in an activity that promotes Sustainable Environment and Natural Resource Use	2	2
TOTAL		48	100

Name: Kayaha Aisha Shamim
Gender: Female
Constituency: Butuntumula
Score: 47

COUNCILOR		Actual Score	Maximum Score
1	LEGISLATIVE ROLE	15	25
a	Participation in plenary session	5	5
b	Participation in Committees	5	5
c	Moved motion without notice	0	2
d	Moved motion on notice	0	3
e	Regular attendance of plenary	3	3
f	Regular attendance of committee	2	2
g	Special knowledge to council	0	2
h	Special knowledge to committee	0	2
g	Special knowledge Explanation on issue	0	1
2	CONTACT WITH ELECTORATE	9	20
a	Evidence of a written Programme of meetings with Electorate	2	5
b	Existence of Office or coordinating office	2	2
c	Functional Office or coordinating office	3	3
d	Evidence of Reports of decisions of the Council taken to the electorate	1	5
e	Issues raised by electorate taken to council	1	5
3	PARTICIPATION IN COMMUNAL AND DEVELOPMENT ACTIVITIES IN HIS/HER ELECTORAL AREA	9	15
a	Projects initiated	5	5
b	Provided Written advice as contributions to communal projects	0	2
c	Material Contributions to communal projects	3	3
d	Signed one Memorandum of Understanding (MoU) / evidence of Lobbying a development partner	1	3
e	Implemented MoU	0	2
4	PARTICIPATION IN LOWER LOCAL GOVERNMENT	2	10
a	Attendance in sub - county Council sessions	1	5
b	Evidence of giving feedback to the sub-county Council from District Council.	1	5
5	SERVICE DELIVERY ON NATIONAL PRIORITY PROGRAMME AREAS	12	30
a	Monitoring and giving feedback to council	2	5
b	Attended NAADS/PMA /other programs meetings	2	5
c	Attended functional Adult literacy session	2	5
d	Visited Health units in the constituent sub-county	2	5
e	Visited schools in every sub-county	2	5
f	Participated in a Radio Talk show in any media.	0	1
g	Participated in a Television Talk show in any media.	0	1
h	Written an article in a News Paper	0	1
i	Participated in an activity that promotes Sustainable Environment and Natural Resource Use	2	2
TOTAL		47	100

Name: Ndagire Aisha
Gender: Female
Constituency: Bombo
Score: 47

COUNCILOR		Actual Score	Maximum Score
	1 LEGISLATIVE ROLE	15	25
a	Participation in plenary session	5	5
b	Participation in Committees	5	5
c	Moved motion without notice	0	2
d	Moved motion on notice	0	3
e	Regular attendance of plenary	3	3
f	Regular attendance of committee	2	2
g	Special knowledge to council	0	2
h	Special knowledge to committee	0	2
g	Special knowledge Explanation on issue	0	1
	2 CONTACT WITH ELECTORATE	9	20
a	Evidence of a written Programme of meetings with Electorate	2	5
b	Existence of Office or coordinating office	2	2
c	Functional Office or coordinating office	3	3
d	Evidence of Reports of decisions of the Council taken to the electorate	1	5
e	Issues raised by electorate taken to council	1	5
	3 PARTICIPATION IN COMMUNAL AND DEVELOPMENT ACTIVITIES IN HIS/HER ELECTORAL AREA	5	15
a	Projects initiated	0	5
b	Provided Written advice as contributions to communal projects	0	2
c	Material Contributions to communal projects	3	3
d	Signed one Memorandum of Understanding (MoU) / evidence of Lobbying a development partner	2	3
e	Implemented MoU	0	2
	4 PARTICIPATION IN LOWER LOCAL GOVERNMENT	3	10
a	Attendance in sub - county Council sessions	2	5
b	Evidence of giving feedback to the sub-county Council from District Council.	1	5
	5 SERVICE DELIVERY ON NATIONAL PRIORITY PROGRAMME AREAS	15	30
a	Monitoring and giving feedback to council	2	5
b	Attended NAADS/PMA /other programs meetings	2	5
c	Attended functional Adult literacy session	2	5
d	Visited Health units in the constituent sub-county	5	5
e	Visited schools in every sub-county	2	5
f	Participated in a Radio Talk show in any media.	0	1
g	Participated in a Television Talk show in any media.	0	1
h	Written an article in a News Paper	0	1
i	Participated in an activity that promotes Sustainable Environment and Natural Resource Use	2	2
	TOTAL	47	100

Name: Kasule Abdul
Gender: Male
Constituency: Bombo
Score: 46

COUNCILOR		Actual Score	Maximum Score
1	LEGISLATIVE ROLE	15	25
a	Participation in plenary session	5	5
b	Participation in Committees	5	5
c	Moved motion without notice	0	2
d	Moved motion on notice	0	3
e	Regular attendance of plenary	3	3
f	Regular attendance of committee	2	2
g	Special knowledge to council	0	2
h	Special knowledge to committee	0	2
g	Special knowledge Explanation on issue	0	1
2	CONTACT WITH ELECTORATE	13	20
a	Evidence of a written Programme of meetings with Electorate	2	5
b	Existence of Office or coordinating office	2	2
c	Functional Office or coordinating office	3	3
d	Evidence of Reports of decisions of the Council taken to the electorate	1	5
e	Issues raised by electorate taken to council	5	5
3	PARTICIPATION IN COMMUNAL AND DEVELOPMENT ACTIVITIES IN HIS/HER ELECTORAL AREA	5	15
a	Projects initiated	1	5
b	Provided Written advice as contributions to communal projects	0	2
c	Material Contributions to communal projects	3	3
d	Signed one Memorandum of Understanding (MoU) / evidence of Lobbying a development partner	1	3
e	Implemented MoU	0	2
4	PARTICIPATION IN LOWER LOCAL GOVERNMENT	2	10
a	Attendance in sub - county Council sessions	1	5
b	Evidence of giving feedback to the sub-county Council from District Council.	1	5
5	SERVICE DELIVERY ON NATIONAL PRIORITY PROGRAMME AREAS	11	30
a	Monitoring and giving feedback to council	2	5
b	Attended NAADS/PMA /other programs meetings	2	5
c	Attended functional Adult literacy session	2	5
d	Visited Health units in the constituent sub-county	2	5
e	Visited schools in every sub-county	2	5
f	Participated in a Radio Talk show in any media.	0	1
g	Participated in a Television Talk show in any media.	1	1
h	Written an article in a News Paper	0	1
i	Participated in an activity that promotes Sustainable Environment and Natural Resource Use	0	2
TOTAL		46	100

Name: Nalubega Deborah
Gender: Female
Constituency: Katikamu
Score: 46

COUNCILOR		Actual Score	Maximum Score
	1 LEGISLATIVE ROLE	16	25
a	Participation in plenary session	4	5
b	Participation in Committees	5	5
c	Moved motion without notice	2	2
d	Moved motion on notice	0	3
e	Regular attendance of plenary	3	3
f	Regular attendance of committee	2	2
g	Special knowledge to council	0	2
h	Special knowledge to committee	0	2
g	Special knowledge Explanation on issue	0	1
	2 CONTACT WITH ELECTORATE	9	20
a	Evidence of a written Programme of meetings with Electorate	2	5
b	Existence of Office or coordinating office	2	2
c	Functional Office or coordinating office	3	3
d	Evidence of Reports of decisions of the Council taken to the electorate	1	5
e	Issues raised by electorate taken to council	1	5
	3 PARTICIPATION IN COMMUNAL AND DEVELOPMENT ACTIVITIES IN HIS/HER ELECTORAL AREA	8	15
a	Projects initiated	5	5
b	Provided Written advice as contributions to communal projects	0	2
c	Material Contributions to communal projects	3	3
d	Signed one Memorandum of Understanding (MoU) / evidence of Lobbying a development partner	0	3
e	Implemented MoU	0	2
	4 PARTICIPATION IN LOWER LOCAL GOVERNMENT	0	10
a	Attendance in sub - county Council sessions	0	5
b	Evidence of giving feedback to the sub-county Council from District Council.	0	5
	5 SERVICE DELIVERY ON NATIONAL PRIORITY PROGRAMME AREAS	13	30
a	Monitoring and giving feedback to council	2	5
b	Attended NAADS/PMA /other programs meetings	2	5
c	Attended functional Adult literacy session	2	5
d	Visited Health units in the constituent sub-county	2	5
e	Visited schools in every sub-county	2	5
f	Participated in a Radio Talk show in any media.	1	1
g	Participated in a Television Talk show in any media.	0	1
h	Written an article in a News Paper	0	1
i	Participated in an activity that promotes Sustainable Environment and Natural Resource Use	2	2
	TOTAL	46	100

Name: Namanja Proscovia
Gender: Female
Constituency: Katikamu
Score: 43

COUNCILOR		Actual Score	Maximum Score
1	LEGISLATIVE ROLE	15	25
a	Participation in plenary session	5	5
b	Participation in Committees	5	5
c	Moved motion without notice	0	2
d	Moved motion on notice	0	3
e	Regular attendance of plenary	3	3
f	Regular attendance of committee	2	2
g	Special knowledge to council	0	2
h	Special knowledge to committee	0	2
g	Special knowledge Explanation on issue	0	1
2	CONTACT WITH ELECTORATE	9	20
a	Evidence of a written Programme of meetings with Electorate	2	5
b	Existence of Office or coordinating office	2	2
c	Functional Office or coordinating office	3	3
d	Evidence of Reports of decisions of the Council taken to the electorate	1	5
e	Issues raised by electorate taken to council	1	5
3	PARTICIPATION IN COMMUNAL AND DEVELOPMENT ACTIVITIES IN HIS/HER ELECTORAL AREA	5	15
a	Projects initiated	1	5
b	Provided Written advice as contributions to communal projects	0	2
c	Material Contributions to communal projects	3	3
d	Signed one Memorandum of Understanding (MoU) / evidence of Lobbying a development partner	1	3
e	Implemented MoU	0	2
4	PARTICIPATION IN LOWER LOCAL GOVERNMENT	3	10
a	Attendance in sub - county Council sessions	2	5
b	Evidence of giving feedback to the sub-county Council from District Council.	1	5
5	SERVICE DELIVERY ON NATIONAL PRIORITY PROGRAMME AREAS	11	30
a	Monitoring and giving feedback to council	2	5
b	Attended NAADS/PMA /other programs meetings	2	5
c	Attended functional Adult literacy session	0	5
d	Visited Health units in the constituent sub-county	2	5
e	Visited schools in every sub-county	2	5
f	Participated in a Radio Talk show in any media.	1	1
g	Participated in a Television Talk show in any media.	0	1
h	Written an article in a News Paper	0	1
i	Participated in an activity that promotes Sustainable Environment and Natural Resource Use	2	2
TOTAL		43	100

Name: Mulwana Samuel
Gender: Male
Constituency: Butuntumula
Score: 41

COUNCILOR		Actual Score	Maximum Score
	1 LEGISLATIVE ROLE	15	25
a	Participation in plenary session	5	5
b	Participation in Committees	5	5
c	Moved motion without notice	0	2
d	Moved motion on notice	0	3
e	Regular attendance of plenary	3	3
f	Regular attendance of committee	2	2
g	Special knowledge to council	0	2
h	Special knowledge to committee	0	2
g	Special knowledge Explanation on issue	0	1
	2 CONTACT WITH ELECTORATE	9	20
a	Evidence of a written Programme of meetings with Electorate	2	5
b	Existence of Office or coordinating office	2	2
c	Functional Office or coordinating office	3	3
d	Evidence of Reports of decisions of the Council taken to the electorate	1	5
e	Issues raised by electorate taken to council	1	5
	3 PARTICIPATION IN COMMUNAL AND DEVELOPMENT ACTIVITIES IN HIS/HER ELECTORAL AREA	4	15
a	Projects initiated	0	5
b	Provided Written advice as contributions to communal projects	0	2
c	Material Contributions to communal projects	3	3
d	Signed one Memorandum of Understanding (MoU) / evidence of Lobbying a development partner	1	3
e	Implemented MoU	0	2
	4 PARTICIPATION IN LOWER LOCAL GOVERNMENT	3	10
a	Attendance in sub - county Council sessions	2	5
b	Evidence of giving feedback to the sub-county Council from District Council.	1	5
	5 SERVICE DELIVERY ON NATIONAL PRIORITY PROGRAMME AREAS	10	30
a	Monitoring and giving feedback to council	2	5
b	Attended NAADS/PMA /other programs meetings	2	5
c	Attended functional Adult literacy session	0	5
d	Visited Health units in the constituent sub-county	2	5
e	Visited schools in every sub-county	2	5
f	Participated in a Radio Talk show in any media.	0	1
g	Participated in a Television Talk show in any media.	0	1
h	Written an article in a News Paper	0	1
i	Participated in an activity that promotes Sustainable Environment and Natural Resource Use	2	2
	TOTAL	41	100

Name: Katende Rosette
Gender: Female
Constituency: Luwero T/C
Score: 35

COUNCILOR		Actual Score	Maximum Score
	1 LEGISLATIVE ROLE	7	25
a	Participation in plenary session	4	5
b	Participation in Committees	0	5
c	Moved motion without notice	0	2
d	Moved motion on notice	0	3
e	Regular attendance of plenary	3	3
f	Regular attendance of committee	0	2
g	Special knowledge to council	0	2
h	Special knowledge to committee	0	2
g	Special knowledge Explanation on issue	0	1
	2 CONTACT WITH ELECTORATE	9	20
a	Evidence of a written Programme of meetings with Electorate	2	5
b	Existence of Office or coordinating office	2	2
c	Functional Office or coordinating office	3	3
d	Evidence of Reports of decisions of the Council taken to the electorate	1	5
e	Issues raised by electorate taken to council	1	5
	3 PARTICIPATION IN COMMUNAL AND DEVELOPMENT ACTIVITIES IN HIS/HER ELECTORAL AREA	3	15
a	Projects initiated	0	5
b	Provided Written advice as contributions to communal projects	0	2
c	Material Contributions to communal projects	3	3
d	Signed one Memorandum of Understanding (MoU) / evidence of Lobbying a development partner	0	3
e	Implemented MoU	0	2
	4 PARTICIPATION IN LOWER LOCAL GOVERNMENT	3	10
a	Attendance in sub - county Council sessions	2	5
b	Evidence of giving feedback to the sub-county Council from District Council.	1	5
	5 SERVICE DELIVERY ON NATIONAL PRIORITY PROGRAMME AREAS	13	30
a	Monitoring and giving feedback to council	2	5
b	Attended NAADS/PMA /other programs meetings	2	5
c	Attended functional Adult literacy session	2	5
d	Visited Health units in the constituent sub-county	2	5
e	Visited schools in every sub-county	2	5
f	Participated in a Radio Talk show in any media.	1	1
g	Participated in a Television Talk show in any media.	0	1
h	Written an article in a News Paper	0	1
i	Participated in an activity that promotes Sustainable Environment and Natural Resource Use	2	2
	TOTAL	35	100

Publications in this Series

Tumushabe, G.W., Bainomugisha, A., and Muhwezi, W., (2000). Towards Strategic Engagement: Government NGO Relations and the Quest for NGO Law Reform in Uganda. ACODE Policy Research Series, No. 1, 2000. Kampala.

Kameri-Mbote, P., (2000). The Operation Environment and Constraints for NGOs in Kenya: Strategies for Good Policy and Practice. ACODE Policy Research Series, No. 2, 2000. Kampala.

Tumushabe, G. W., (2001). The Precautionary Principle, Biotechnology and Environmental Litigation: Complexities in Litigating New and Emerging Environmental problems. ACODE Policy Research Series, No.3, 2001. Kampala.

Tumushabe, G. W., Mwebaza, R., and Naluwairo, R., (2001). Sustainably Utilizing our National Heritage: Legal Implications of the proposed Degazettement of Butamira Forest Reserve. ACODE Policy Research Series, No.4, 2001. Kampala.

Tumushabe, G. W., and Bainomugisha, A., et al: (2003). Sustainable Development Beyond Rio + 10- Consolidating Environmental Democracy in Uganda Through Access to Justice, Information and Participation. ACODE Policy Research Series, No. 5, 2003. Kampala.

Mugenyi, O., and Naluwairo, R., (2003). Uganda's Access to the European Union Agricultural Market: Challenges and Opportunities. ACODE Policy Research Series, No. 6, 2003. Kampala.

Mugenyi, O., and Nuwamanya, D., (2003). Democratizing EPA Negotiations: Challenges for Enhancing the Role of Non State Actors. ACODE Policy Research Series, No.7, 2003. Kampala.

Kameri-Mbote, P., (2004). Towards a Liability and Redress System under the Cartagena Protocol on Biosafety: A Review of the Kenya National Legal System. ACODE Policy Research Series, No. 8, 2004. Kampala.

Kabudi, P.J., (2004). Liability and Redress for Damage Caused by the Transboundary Movement of Living Modified Organisms (LMOs) under the Cartagena Protocol on Biosafety: A Review of Tanzania Legal System. ACODE Policy Research Series, No. 9, 2004. Kampala.

Tumushabe, G. W., and Bainomugisha, A., (2004). Constitutional Reforms and Environmental Legislative Representation in Uganda: A Case Study of Butamira Forest Reserves in Uganda. ACODE Policy Research Series, No. 10, 2004. Kampala.

Musiime, E., Kaizire, B., and Muwanga, M., (2005). Organic Agriculture in Uganda: The Need for A Coherent Policy Framework. ACODE Policy Research Series, No.11, 2005. Kampala.

Tumushabe, G.W., (2005). The Theoretical and Legal Foundations of Community-Based Property Rights in East Africa. ACODE Policy Research Series, No. 12, 2005. Kampala.

Bainomugisha, A., and Mushemeza, D., (2006). Deepening Democracy and Enhancing Sustainable Livelihoods in Uganda: An Independent Review of the Performance of Special Interest Groups in Parliament. ACODE Policy Research Series, No. 13, 2006. Kampala.

Mugenyi, O., and Zeija, F., (2006). The East African Customs Union Protocol: An Audit of the Stakeholders' Participation in the Negotiation Process. ACODE Policy Research Series, No.14, 2006. Kampala.

Naluwairo, R., (2006). From Concept to Action: The Protection and Promotion of Farmers' Rights in East Africa. ACODE Policy Research Series, No.15, 2006. Kampala.

Banomugisha, A., (2006). Political Parties, Political Change and Environmental Governance in Uganda: A Review of Political Parties Manifestos. ACODE Policy Research Series, No.16, 2006.

Tumushabe, G. W., and Musiime, E., (2006). Living on the Margins of Life: The Plight of the Batwa Communities of South Western Uganda. ACODE Policy Research Series, No.17, 2006. Kampala.

Naluwairo, R., and Tabaro, E., (2006). Promoting Food Security and Sustainable Agriculture through Facilitated Access to Plant Genetic Resources for Food and Agriculture: Understanding the Multilateral System of Access and Benefit Sharing. ACODE Policy Research Series, No.18, 2006. Kampala.

Bainomugisha, A., and Mushemeza, E. D., (2006). Monitoring Legislative Representation: Environmental Issues in the 7th Parliament of Uganda. ACODE Policy Research Series, No. 19, 2006. Kampala.

Bainomugisha, A., Kivengyere, H., and Tusasirwe, B., (2006). Escaping the Oil Curse and Making Poverty History: A Review of the Oil and Gas Policy and Legal Framework for Uganda. ACODE Policy Research Series, No. 20, 2006. Kampala.

Keizire, B. B., and Mugenyi, O., (2006). Mainstreaming Environment and Natural Resources Issues in selected Government Sectors: Status, Considerations and Recommendations. ACODE Policy Research Series, No. 21, 2006. Kampala.

Keizire, B. B., and Muhwezi, W. W., (2006). The Paradox of Poverty amidst Plenty in the Fish Product Chain in Uganda: The Case of Lake George. ACODE Policy Research Series, No. 22, 2006. Kampala.

Bainomugisha, A., Okello, J., and Ngoya, J., B., (2007). The Tragedy of Natural Resources Dependent Pastoral Communities: A Case of Teso-Karamoja Border Land Conflict between Katakwi and Moroto Districts. ACODE Policy Research Series, No. 23, 2007. Kampala.

Nkabahona, A., Kandole, A., and Banura, C., (2007). Land Scarcity, Ethnic Marginalisation and Conflict in Uganda: The Case of Kasese District. ACODE Policy Research Series, No. 24, 2007. Kampala.

Kivengere, H., Kandole, A., (2007). Land, Ethnicity and Politics in Kibaale District. ACODE Policy Research Series, No. 25, 2007. Kampala.

Muhumuza, F., Kutegeka, S., and Wolimbwa, A., (2007). Wealth Distribution, Poverty and Timber Governance in Uganda: A Case Study of Budongo Forest Reserve. ACODE Policy Research Series, No. 26, 2007. Kampala.

Tumushabe, G. W., (2009). The Anatomy of Public Administration Expenditure in Uganda: The Cost of the Executive and its Implications for Poverty Eradication and Governance. ACODE Policy Research Series, No. 27, 2009. Kampala

Tumushabe, G., W., and Gariyo, Z., (2009). Ugandan Taxpayers' Burden: The Financial and Governance Costs of a Bloated Legislature. ACODE Policy Research Series, No. 28, 2009. Kampala.

Tumushabe, G., Bainomugisha, A., and Mugenyi, O., (2009). Land Tenure, Biodiversity and Post Conflict Transformation in Acholi Sub-Region: Resolving the Property Rights Dilemma. ACODE Policy Research Series No. 29, 2009. Kampala

Muhwezi, W., W., Bainomugisha, A., et.al., (2009). Oil Revenue Sharing Mechanisms: The Case of Uganda. ACODE Policy Research Series No. 30, 2009. Kampala

Tumushabe, G., et.al. (2010). Monitoring and Assessing the Performance of Local Government Councils in Uganda: Background, Methodology and Score Card. ACODE Policy Research Series, No. 31, 2010. Kampala.

Tumushabe, G., et.al. (2010). Uganda Local Government Councils Score Card Report 2008/09: A Comparative Analysis of Findings and Recommendations for Action. ACODE Policy Research Series, No. 32, 2010. Kampala.

Tucungwirwe, F., et.al. (2010). Local Government Councils Performance and the Quality of Service Delivery in Uganda: Kamuli District Council Score Card 2008/09. ACODE Policy Research Series, No. 33, 2010. Kampala.

Tucungwirwe, F., et.al. (2010). Local Government Councils Performance and the

Quality of Service Delivery in Uganda: Mbale District Council Score Card 2008/09. ACODE Policy Research Series, No. 34, 2010. Kampala.

Ssemakula, E., G., et.al. (2010). Local Government Councils Performance and the Quality of Service Delivery in Uganda: Amuria District Council Score Card 2008/09. ACODE Policy Research Series, No. 35, 2010. Kampala.

Muyomba, L., T., et.al. (2010). Local Government Councils Performance and the Quality of Service Delivery in Uganda: Nebbi District Council Score Card 2008/09. ACODE Policy Research Series, No. 36, 2010. Kampala.

Muyomba, L., T., et.al. (2010). Local Government Councils Performance and the Quality of Service Delivery in Uganda: Amuru District Council Score Card 2008/09. ACODE Policy Research Series, No. 37, 2010. Kampala.

ABOUT THE AUTHORS

Lillian Muyomba Tamale is a Research Fellow at ACODE. She is a graduate of Social Work and Social Administration (MUK) and has undergone training in Project Planning and Management, Strategic Planning and Human Resource Management at Uganda Management Institute, Kampala. She has expertise in the fields of Public Accountability, Transparency and people centred advocacy.

Eugene Gerald Ssemakula is a Research Officer at ACODE with a background of Social Work. Eugene's works have mainly focused on Monitoring and Evaluation Methods and Practice. His current focus is on the functioning of Local Government Systems especially the fusion of political and technical functions in service delivery under decentralisation.

David Ssempala is a Research Intern at ACODE under the Local Government Councils Score-Card Initiative.

John Ssegujja is a Research Intern at ACODE under the Local Government Councils Score-Card Initiative.



Advocates Coalition for Development and Environment(ACODE)

Plot 96, Kanjokya Street, Kamwokya

P. O. Box 29836, Kampala

Tel: +256 414 7712150

Email: acode@acode-u.org; library@acode-u.org

Website: www.acode-u.org