



U.S. Department  
of Homeland Security  
**United States  
Coast Guard**

**LOCAL NOTICE TO MARINERS**

**District: 11**

**Week: 36/11**

SEND CORRESPONDENCE TO:  
COMMANDER  
DISTRICT ELEVEN (DPW)  
COAST GUARD ISLAND BUILDING 50-2  
ALAMEDA, CA 94501-5100

BROADCAST NOTICE TO MARINERS - Information concerning aids to navigation and waterway management promulgated by BNM 0545-11 to BNM 0563-11 has been incorporated in this notice if still significant.

**ABBREVIATIONS**

**A through H**

ACOE - Army Corps of Engineers  
ADRIFT - Buoy Adrift  
AICW - Atlantic Intracoastal Waterway  
AI - Alternating  
B - Buoy  
BKW - Breakwater  
bl - Blast  
BNM - Broadcast Notice to Mariner  
bu - Blue  
C - Canadian  
CHAN - Channel  
CGD - Coast Guard District  
C/O - Cut Off  
CONT - Contour  
CRK - Creek  
CONST - Construction  
DBN/Dbn - Daybeacon  
DBD/DAYBD - Dayboard  
DEFAC - Defaced  
DEST - Destroyed  
DISCON - Discontinued  
DMGD/DAMGD - Damaged  
ec - eclipse  
EST - Established Aid  
ev - every  
EVAL - Evaluation  
EXT - Extinguished  
F - Fixed  
fl - flash  
FI - Flashing  
G - Green  
HAZ - Hazard to Navigation  
HBR - Harbor  
HOR - Horizontal Clearance  
HT - Height

**I through O**

I - Interrupted  
ICW - Intracoastal Waterway  
IMCH - Improper Characteristic  
INL - Inlet  
INOP - Not Operating  
INT - Intensity  
ISL - Islet  
Iso - Isophase  
kHz - Kilohertz  
LAT - Latitude  
LB - Lighted Buoy  
LBB - Lighted Bell Buoy  
LHB - Lighted Horn Buoy  
LGB - Lighted Gong Buoy  
LONG - Longitude  
LNM - Local Notice to Mariners  
LT - Light  
LT CONT - Light Continuous  
LTR - Letter  
LWB - Lighted Whistle Buoy  
LWP - Left Watching Properly  
MHz - Megahertz  
MISS/MSNG - Missing  
Mo - Morse Code  
MSLD - Misleading  
N/C - Not Charted  
NGA - National Geospatial-Intelligence Agency  
NO/NUM - Number  
NOS - National Ocean Service  
NW - Notice Writer  
OBSCU - Obscured  
OBST - Obstruction  
OBSTR - Obstruction  
Oc - Occulting  
ODAS - Anchored Oceanographic Data Buoy

**P through Z**

PRIV - Private Aid  
Q - Quick  
R - Red  
RACON - Radar Transponder Beacon  
Ra ref - Radar reflector  
RBN - Radio Beacon  
REBUILT - Aid Rebuilt  
RECOVERED - Aid Recovered  
RED - Red Buoy  
REFL - Reflective  
RRL - Range Rear Light  
RELIGHTED - Aid Relit  
RELOC - Relocated  
RESET ON STATION - Aid Reset on Station  
RFL - Range Front Light  
RIV - River  
s - seconds  
SEC - Section  
SHL - Shoaling  
si - silent  
SIG - Signal  
SND - Sound  
SPM - Single Point Mooring Buoy  
SS - Sound Signal  
STA - Station  
STRUCT - Structure  
St M - Statute Mile  
TEMP - Temporary Aid Change  
TMK - Topmark  
TRLB - Temporarily Replaced by Lighted Buoy  
TRLT - Temporarily Replaced by Light  
TRUB - Temporarily Replaced by Unlighted Buoy  
W - White  
Y - Yellow

**Additional Abbreviations Specific to this LNM Edition: None**

---

---

## SECTION I - SPECIAL NOTICES

This section contains information of special concern to the Mariner.

---

### SUBMITTING INFORMATION FOR PUBLICATION IN THE LOCAL NOTICE TO MARINERS

A complete set of guidelines with examples and contact information can be found at <http://www.uscg.mil/D11/DP/LnmRequest.asp> or call BM1 John D. Hinson at 510-437-2980 or e-mail [D11LNM@uscg.mil](mailto:D11LNM@uscg.mil). Please provide all Local Notice to Mariners submissions 14 days prior to the start of operations.

### BRIDGE INFORMATION-DISCREPANCIES AND CORRECTIONS

For bridge related issues during normal working hours Monday through Friday, contact the Coast Guard Eleventh District Bridge Section, Coast Guard Island, Building 50-2, Alameda, CA 94501-5100, telephone: 510-437-3516 Office; 510-219-4366 Cell. For emergencies or discrepancies during nights, weekends and holidays, immediately notify the nearest Coast Guard Sector Command via VHF-FM chan. 16 or via telephone: San Diego & Colorado River 619-278-7031, Los Angeles 310-521-3800, San Francisco 415-399-3547, Eureka 707-839-6113. Flotsam may accumulate on and near bridge piers and abutments. Mariners should approach all bridges with caution.

\* To REPORT A DELAY AT A DRAWBRIDGE A report form is included in the Enclosures section of this Local Notice to Mariners.\*

### DGPS

For information regarding the DGPS system, or to report GPS, DGPS, or AIS problems, mariners are advised to contact: <http://www.navcen.uscg.gov>, email: [nisws@navcen.uscg.gov](mailto:nisws@navcen.uscg.gov), or the USCG Navigation Center at 703-313-5900.

### ELECTRONIC NAVIGATION CHARTS

"RANGE STRUCTURES: The U.S. Coast Guard has become aware that Coast Guard information used to depict a range line on NOAA Electronic Navigational Charts (ENC) may not be of sufficient accuracy to accurately portray the range line on the ENC. Mariners are cautioned that the position of a range line as shown on an ENC may not reflect its true position."

LNM: 03/11

### SOUTHERN CALIFORNIA-MARINE SAFETY INFORMATION BULLETIN

There has been a recent trend in traffic patterns where some vessel operators are choosing to depart the Traffic Separation Scheme (TSS) established in the Santa Barbara Channel and transit through an area to the south of San Miguel, Santa Rosa and Santa Cruz Islands (referenced herein as "south of the Channel Islands"). As such, the Los Angeles / Long Beach Harbor Safety Committee has published voluntary western traffic lanes for vessels approaching and departing the Ports of Los Angeles and Long Beach.

Mariners transiting through the western and northern approaches to and from the Ports of Los Angeles and Long Beach (LA/LB) are advised the established TSS through the Santa Barbara Channel as shown on NOAA and Admiralty charts is the only International Maritime Organization (IMO) approved routing measure in this area. An IMO approved TSS reduces the risk of collision by providing for the separation of arriving and departing traffic and minimizing potentially hazardous crossing situations. Mariners, who have traditionally used this approved TSS, are encouraged to continue to do so.

For additional information please see the Enclosures Section.

### U.S. COAST GUARD PRECAUTIONARY TRANSIT NOTIFICATION VICINITY OF FUKUSHIMA, JAPAN

In response to the situation at the Fukushima Nuclear Power Plant in Japan, the U.S. Coast Guard recommends, as a precaution, that vessels avoid transiting within 20 kilometers/10.8 nautical miles of the Fukushima Nuclear Power Plant (37°25.5'N, 141°02.0'E).

Mariners are advised that this recommendation should be considered a minimum distance. Prudent route planning should incorporate prevailing and changing wind and weather conditions, in addition to the other precautionary measures.

In the event a vessel bound for a U.S. port transits within 20 kilometers/10.8 nautical miles of the Fukushima Nuclear Power Plant (37°25.5'N, 141°02.0'E) cautionary area, the U.S. Coast Guard requires the vessel's master to submit transit information, including the date and total time within the 20 kilometers/10.8 nautical miles cautionary area, to the cognizant U.S. Coast Guard Captain of the Port using the comment block in the routine submittal of their 96-hour Advanced Notice of Arrival.

The U.S. Coast Guard will provide an updated notice as additional guidance becomes available. Mariners should keep abreast of information being provided by the government of Japan relating to any further potential impacts.

LNM: 23/11

---

---

## SECTION II - DISCREPANCIES

This section lists all reported and corrected discrepancies related to Aids to Navigation in this edition. A discrepancy is a change in the status of an aid to navigation that differs from what is published or charted.

---

### DISCREPANCIES (FEDERAL AIDS)

<u>LLNR</u>	<u>Aid Name</u>	<u>Status</u>	<u>Chart No.</u>	<u>BNM Ref.</u>	<u>LNM St</u>	<u>LNM End</u>
198	NOAA Environmental Lighted Buoy 46054	LT EXT	18721	0843-10	48/10	
2585	San Nicolas Island East End Lighted Bell Buoy 3	REDUCED INT	18755	0502-11	33/11	
6595	Suisun Bay Light 31	TRLB/STRUCT DMGD	18659	0443-11	29/11	
6685	San Joaquin River Light 8	TRLB/DBN DMGD/STRUCT DMGD	18659	0375-11	24/11	
7220	Sacramento River Deep Water Ship Channel Light 12	TRLB/STRUCT DEST	18660	0282-11	18/11	
7840	Bodega Harbor Channel Daybeacon 13	TRLB/STRUCT DEST	18643	0415-11	27/11	

### DISCREPANCIES (FEDERAL AIDS) CORRECTED

<u>LLNR</u>	<u>Aid Name</u>	<u>Status</u>	<u>Chart No.</u>	<u>BNM Ref.</u>	<u>LNM St</u>	<u>LNM End</u>
225	San Luis Obispo Light	WATCHING PROPERLY	18704	0559-11	36/11	37/11
3750	Santa Barbara Harbor Breakwater Light	WATCHING PROPERLY	18725	0550-11	36/11	36/11
3750	Santa Barbara Harbor Breakwater Light	WATCHING PROPERLY	18725	0550-11	36/11	36/11
4600	Yerba Buena Island Wharf Light	WATCHING PROPERLY	18650		36/11	36/11
5865	East Brother Light	WATCHING PROPERLY	18649	0549-11	36/11	36/11
7460	Sacramento River Deep Water Ship Channel Range A Front Light 59	WATCHING PROPERLY	18662	0537-11	35/11	36/11

### DISCREPANCIES (PRIVATE AIDS)

<u>LLNR</u>	<u>Aid Name</u>	<u>Status</u>	<u>Chart No.</u>	<u>BNM Ref.</u>	<u>LNM St</u>	<u>LNM End</u>
6717	Antioch Bridge Racon Z	RAC INOP	18661	0515-11	34/11	
8591.3	Lake Tahoe NASA-JPL Lighted Research Buoy TB4	LT IMCH	18665	0504-11	33/11	

### DISCREPANCIES (PRIVATE AIDS) CORRECTED

<u>LLNR</u>	<u>Aid Name</u>	<u>Status</u>	<u>Chart No.</u>	<u>BNM Ref.</u>	<u>LNM St</u>	<u>LNM End</u>
-------------	-----------------	---------------	------------------	-----------------	---------------	----------------

None

### PLATFORM DISCREPANCIES

<u>Name</u>	<u>Status</u>	<u>Position</u>	<u>BNM Ref.</u>	<u>LNM St</u>	<u>LNM End</u>
-------------	---------------	-----------------	-----------------	---------------	----------------

None

### PLATFORM DISCREPANCIES CORRECTED

<u>Name</u>	<u>Status</u>	<u>Position</u>	<u>BNM Ref.</u>	<u>LNM St</u>	<u>LNM End</u>
-------------	---------------	-----------------	-----------------	---------------	----------------

None

---

---

## SECTION III - TEMPORARY CHANGES and TEMPORARY CHANGES CORRECTED

This section contains temporary changes and corrections to Aids to Navigation for this edition. When charted aids are temporarily relocated for dredging, testing, evaluation, or marking an obstruction, a temporary correction shall be listed in Section IV giving the new position.

---

### TEMPORARY CHANGES

<u>LLNR</u>	<u>Aid Name</u>	<u>Status</u>	<u>Chart No.</u>	<u>BNM Ref.</u>	<u>LNM St</u>	<u>LNM End</u>
-------------	-----------------	---------------	------------------	-----------------	---------------	----------------

None

### TEMPORARY CHANGES CORRECTED

None

**PLATFORM TEMPORARY CHANGES**

Name Status Position BNM Ref. LNM St LNM End

None

**PLATFORM TEMPORARY CHANGES CORRECTED**

Name Status Position BNM Ref. LNM St LNM End

None

**SECTION IV - CHART CORRECTIONS**

This section contains corrections to federally and privately maintained Aids to Navigation, as well as NOS corrections.

This section contains corrective actions affecting chart(s). Corrections appear numerically by chart number, and pertain to that chart only. It is up to the mariner to decide which chart(s) are to be corrected. The following example explains individual elements of a typical chart correction.

Chart Number	Chart Edition	Edition Date	Last Local Notice to Mariners	Horizontal Datum Reference	Source of Correction	Current Local Notice to Mariners
12327	91st Ed.	19-APR-97	Last LNM: 26/97	NAD 83		27/97

Chart Title: NY-NJ-NEW YORK HARBOR - RARITAN RIVER

Main Panel 2245 NEW YORK HARBOR

CGD01

(Temp) ADD NATIONAL DOCK CHANNEL BUOY 3

at 40-41-09.001N 074-02-48.001W

Green can

Corrective Action Object of Corrective Action

Position

(Temp) indicates that the chart correction action is temporary in nature. Courses and bearings are given in degrees clockwise from 000 true.

Bearings of light sectors are toward the light from seaward. The nominal range of lights is expressed in nautical miles (NM) unless otherwise noted.

**18603 17th Ed. 01-MAR-11 Last LNM: 44/08 NAD 83 36/11**

Chart Title: St. George Reef and Crescent City Harbor; Crescent City Harbor

Inset 1804 CRESCENT CITY HARBOR. Page/Side: N/A

DELETE	Sounding in Feet; 8 (NOS NW-20823)	NOS 41-44-31.300N	124-11-00.500W
ADD	Rock in Feet (Within Corresponding Depth Area); 1 Rk (NOS NW-20823)	NOS 41-44-30.900N	124-11-00.100W
ADD	Rock in Feet (Within Corresponding Depth Area); 3 Rk (NOS NW-20823)	NOS 41-44-32.000N	124-10-59.300W

**18649 67th Ed. 01-DEC-09 Last LNM: 24/09 NAD 83 36/11**

Chart Title: Entrance to San Francisco Bay

Main Panel 1823 SAN FRANCISCO ENTRANCE. Page/Side: N/A

DELETE	MTVA Lighted Mooring Buoy, "MTVA" Fl 2s Priv.	CGD11 37-47-45.000N	122-20-30.000W
ADD	Pier Labeling Text; I-J 112 FT. (NOS NW-20785)	NOS 37-53-39.900N	122-13-47.300W
ADD	Pier Labeling Text; PIER G - 184 FT. PIER H - 184 FT. PIER I - 178 FT. PIER J - 170 FT. PIER K - 165 FT. PIER L - 155 FT. PIER M - 141 FT. (NOS NW-20785)	NOS 37-52-56.800N	122-13-42.400W

**18650 56th Ed. 01-SEP-09 Last LNM: 24/09 NAD 83 36/11**

Chart Title: San Francisco Bay Candlestick Point to Angel Island

Main Panel 1824 SAN FRANCISCO BAY CANDLESTICK POINT TO ANGEL ISLAND. Page/Side: N/A

DELETE	MTVA Lighted Mooring Buoy, "MTVA" Fl 2s Priv.	CGD11 37-47-45.000N	122-20-30.000W
ADD	Pier Labeling Text; I-J 112 FT. (NOS NW-20785)	NOS 37-46-52.300N	122-25-24.900W
ADD	Pier Labeling Text; PIER G - 184 FT. PIER H - 184 FT. PIER I - 178 FT. PIER J - 170 FT. PIER K - 165 FT. PIER L - 155 FT. PIER M - 141 FT. (NOS NW-20785)	NOS 37-47-00.800N	122-25-28.600W

18652 36th Ed. 01-FEB-11 Last LNM: 24/09 NAD 83 36/11

ChartTitle: San Francisco Bay to Antioch

Main Panel 1828 SAN FRANCISCO BAY TO ANTIOCH. Page/Side: a

DELETE MTVA Lighted Mooring Buoy, "MTVA" Fl 2s Priv. CGD11 37-47-45.000N 122-20-30.000W

18749 43rd Ed. 01-APR-10 Last LNM: 21/09 NAD 83 36/11

ChartTitle: San Pedro Bay;Anaheim Bay Huntington Harbor

CHART CA - SAN PEDRO BAY. Page/Side: N/A

DELETE Disestablish Aid San Pedro West Channel Lighted Buoy 3 CGD11 33-42-45.570N 118-16-29.255W

DELETE Disestablished Aid San Pedro West Channel Buoy 1 CGD11 33-42-35.500N 118-16-22.000W

18751 46th Ed. 01-AUG-09 Last LNM: 21/09 NAD 83 36/11

ChartTitle: Los Angeles and Long Beach Harbors

Main Panel 1904 LOS ANGELES AND LONG BEACH HARBORS. Page/Side: N/A

DELETE Disestablish Aid San Pedro West Channel Lighted Buoy 3 CGD11 33-42-45.570N 118-16-29.255W

DELETE Disestablished Aid San Pedro West Channel Buoy 1 CGD11 33-42-35.500N 118-16-22.000W

18758 7th Ed. 01-AUG-11 Last LNM: 35/08 NAD 83 36/11

ChartTitle: Del Mar Boat Basin

Main Panel 1912 DEL MAR BOAT BASIN CAMP JOSEPH H. PENDLETON CALIFORNIA. Page/Side: N/A

NEW EDITION Scale 1: 5,000; New edition (7 ed, 8/1/2011) due to numerous Notice to Mariner changes. This NOAA chart is now available in both the Print-on Demand and digital raster formats. See http://nauticalcharts.noaa.gov/mod/dole.htm for details. The corresponding traditional paper chart will be available in two to eight weeks. NOS --

18773 42nd Ed. 01-JAN-11 Last LNM: 42/08 NAD 83 36/11

ChartTitle: San Diego Bay

CHART CA - San Diego Bay. Page/Side: N/A

CHANGE Shelter Island West End Light 4 CGD11 at 32-42-28.302N 117-14-06.072W  
Rename Shelter Island West End Light 2 to Shelter Island West End Light 4

ADD Shelter Island Buoy 2 CGD11 at 32-42-16.692N 117-14-02.328W  
Red Shelter Island Buoy 2

SECTION V - ADVANCE NOTICES

This section contains advance notice of approved projects, changes to aids to navigation, or upcoming temporary changes such as dredging, etc. Mariners are advised to use caution while transiting these areas.

SUMMARY OF ADVANCED APPROVED PROJECTS

Approved Project(s) Project Date Ref. LNM  
None

Advance Notice(s)

NORTHERN CALIFORNIA-ESTABLISH MOORING BUOY-SAN FRANCISCO BAY

The U.S. Coast Guard will establish a mooring ball the week of 3 Oct 11 in position 37-54.38N 122-27.72W. For more details or comments contact LT Twomey at 510-437-2982 or Daniel.J.Twomey@uscg.mil.

Chart 18653 LNM: 36/11

NORTHERN CALIFORNIA-FLEET WEEK-SAN FRANCISCO BAY

On 5 Oct 11 the Coast Guard will temporarily establish five special purpose buoys (yellow) to identify the Fleet Week security zone boundaries and center point. The buoys will be lighted at night and removed on or about 09 Oct 11.

Center Point: 37-49-00.480N, 122-25-35.400W, FL Q (Y)  
South West(SW) Corner: 37-48-36.720N, 122-26-47.160W, FL 2.5s (Y)

North West(NW) Corner: 37-49-06.780N, 122-26-52.080W, FL 2.5s (Y)  
North East(NE) Corner: 37-49-23.340N, 122-24-21.240W, FL 2.5s (Y)  
South East(SE) Corner: 37-48-53.280N, 122-24-16.320W, FL 2.5s (Y)

Please submit any questions or comments to LT Twomey at 510-437-2982 or Daniel.j.twomey@uscg.mil.

Charts: 18649 18650 18652

LNM: 35/11

#### **SOUTHERN CALIFORNIA-BOUY DISCONTINUANCE-POINT CONCEPTION TO POINT SUR**

The U.S. Coast Guard is planning to discontinue San Simeon Lighted Bell Buoy 1 (LLNR 255) during the week of 26 Sep 11. Direct any questions, comments, or feedback to LT Melissa Smith at 510-437-5984 or Melissa.A.Smith@uscg.mil

Chart 18700

LNM: 35/11

---

### **SECTION VI - PROPOSED CHANGES**

Periodically, the Coast Guard evaluates its system of aids to navigation to determine whether the conditions for which the aids to navigation were established have changed. When changes occur, the feasibility of improving, relocating, replacing, or discontinuing aids are considered. This section contains notice(s) of non-approved, proposed projects open for comment. SPECIAL NOTE: Mariners are requested to respond in writing to the District office unless otherwise noted (see banner page for address).

---

#### **PROPOSED WATERWAY PROJECTS OPEN FOR PUBLIC COMMENT**

<b><u>Proposed Project(s)</u></b>	<b><u>Closing</u></b>	<b><u>Docket No.</u></b>	<b><u>Ref. LNM</u></b>
<b>None</b>			

#### **Proposed Change Notice(s)**

##### **NORTHERN CALIFORNIA-WAMS ANNOUNCEMENT- RICHMOND HARBOR CHANNEL**

The Coast Guard is conducting a Waterways Analysis and Management System (WAMS) study of the Richmond Harbor Channel. The study focuses on the area's aids to navigation system, waterborne commerce, marine casualty information, port/harbor resources, emergency response plans, routing and emergency communication capabilities, and future development projects. Any interested company or individual wishing to provide comments or participate in a user survey should contact the Coast Guard no later than 30 November of 2011:

Commander  
U.S. Coast Guard  
Sector San Francisco  
Attn: WAMS Officer  
1 Yerba Buena Drive, Yerba Buena Island  
San Francisco, CA 94130-5013  
Scott.D.Thayer@uscg.mil  
(415) 399-7346

LNM: 19/11

---

### **SECTION VII - GENERAL**

This section contains information of general concern to the Mariners. Mariners are advised to use caution while transiting these areas.

#### **ARIZONA-BRIDGE-COLORADO RIVER Updated 28 Jun 11**

Highway 62 Bridge at Parker, AZ.-Temporary trestles installed upstream and downstream for the replacement of the bridge, provide 13 feet vertical clearance above High Water and 50 feet horizontal clearance at the main navigational channel span only. At night, the trestle piles are marked with red lights and the main channel span is marked with a center range of 2 green lights. Cable cross bracing may be present in all spans except the main channel span. Cables are marked with multi-colored flags. Orange buoys have been installed along the length of the trestles leaving an opening for vessels to pass through the main navigational channel span. Mariners are advised to use the main channel span only. No wake is requested through the project site. The bridge replacement project will be in progress through Dec 2013.

LNM: 18/11

#### **NORTHERN CALIFORNIA-BRIDGE-14 MILE SLOUGH**

I-5 HIGHWAY BRIDGE WIDENING PROJECT- Construction is occurring Monday through Saturday, during daylight hours, through November 2011. The upstream and downstream corners of a 60 ft long temporary trestle, extending from the slough bank, will be lighted at night with steady burning red lights (See enclosure at end of this notice). At no time will the center main navigation span be obstructed by the work. For conditions at the bridge and in the event of an emergency, mariners can contact the contractor R & L Brosamer at (510) 772-2100 or (510) 772-0498.

Chart 18662

LNM: 36/11

#### **NORTHERN CALIFORNIA-BRIDGE-CALAVERAS RIVER Current 30 Aug 11**

I-5 HIGHWAY BRIDGE WIDENING PROJECT- A 42 ft X 152 ft crane barge will be anchored between existing bridge piers, Monday through Saturday, during daylight hours through 01 Nov 2011. Anchor wires will extend 500 ft from each corner of the barge. The two eastern set and

**NORTHERN CALIFORNIA-BRIDGE-CALAVERAS RIVER Current 30 Aug 11**

two western set anchors will be 60 feet apart. (See enclosure at end of this notice). At no time will both navigational spans of the bridge be obstructed. The unmanned barge will remain on-scene after the workday and will be lighted at night with steady burning white lights. For conditions at the bridge and in the event of an emergency, mariners can contact the contractor R & L Brosamer at (510) 772-2100 or (510) 772-0498.

Chart 18662

LNLM: 34/11

**NORTHERN CALIFORNIA-BRIDGE-MIDDLE RIVER**

STATE ROUTE 4 HIGHWAY BRIDGE- Caltrans will use scaffolding and containment platform for a painting project, reducing vertical clearance by no more than 5 ft, from 12 Sep 11 to 20 Apr 12. During project approximately half of the width of the waterway will be unobstructed. Scaffolding and containment will be lighted at night with red lights

Chart 18661

LNLM: 36/11

**NORTHERN CALIFORNIA-BRIDGE-NAPA RIVER Current 30 Aug 11**

LAWRENCE STREET RAILROAD BRIDGE (Wine Train) - Construction of the new railroad bridge, immediately adjacent to the existing bridge, is complete. Removal of the existing bridge is in progress. A temporary bridge provides 11 feet of vertical clearance at Mean High Water and 30 feet of horizontal clearance between piers. All mariners are urged to use caution while transiting the area of construction. For more details or comments contact the Eleventh Coast Guard District Bridge Office at 510-437-3515.

Chart 18654

LNLM: 20/10

**NORTHERN CALIFORNIA-BRIDGE-SACRAMENTO RIVER Current 06 Sep 11**

BRYTE BEND HIGHWAY BRIDGE - All bridge navigational lights are extinguished.

Chart 18664

LNLM: 26/11

**NORTHERN CALIFORNIA-BRIDGE-SAN FRANCISCO BAY Current 06 Sep 11**

DUMBARTON RAILROAD DRAWBRIDGE - Two red/green movable span lights on the drawbridge are extinguished.

Chart 18651

LNLM: 26/11

**NORTHERN CALIFORNIA-BRIDGE-SAN FRANCISCO BAY Current 06 Sep 11**

RICHMOND-SAN RAFAEL BRIDGE- Caltrans will be conducting underwater pier inspections, dive operations, during daylight hours, from 12-16 Sep 2011 and from 26-30 Sep 2011. Dive operations will be conducted on the 5 piers east and west of the western navigation span, west truss span, and the 5 piers east and west of the eastern navigation span, east truss span. The dive vessel is 52 foot fast landing craft with twin jetted engines. Diver's umbilical hose may be floating in a radius of 50 feet on the surface adjacent to the vessel. To ensure diver safety, mariners are requested to contact the, "Omaha Greene", on VHF-FM CH 16/14/09 or by cell 916-708-7210, approximately 30 minutes before transiting the bridge. All mariners are requested to use extreme caution while transiting the dive site.

Chart 18649

LNLM: 32/11

**NORTHERN CALIFORNIA-BRIDGE-SAN FRANCISCO BAY-Current 30 Aug 11**

SAN FRANCISCO-OAKLAND BAY BRIDGE REPLACEMENT-EAST OF YERBA BUENA ISLAND (YBI)-Mariners are advised to avoid the construction area by using the main navigational channel west of YBI or the alternate channel, piers I-J (existing bridge) and piers E-3 E-4 (3rd and 4th piers east of YBI, new bridge), east of the construction site. Clearances for alternate channel are; 442 feet of horizontal clearance and 112 feet of vertical clearance at Mean High Water. Mariners transiting the area should proceed with caution to avoid creating unstable conditions for on-site workers. Temporary falsework is now in place and is lit at night with quick flashing red lights. See the Enclosure Section of this Local Notice to Mariners for the Alternate Channel Marking and falsework diagram. Mariners may contact American Bridge/Fluor VHF-FM Chan. 73, or by telephone at 510-759-1325 (American Bridge/Fluor), to determine conditions at the bridge. The green center span lights have been temporarily extinguished in the three spans east of the main channel span. A large crane barge and material barges are anchored approximately 350 feet ENE of the YBI shoreline. Anchor lines extend approximately 1500 ft north and south of the barges, anchor buoys are lighted at night with quick flashing white lights. A crane barge and associated material barges are anchored approximately 600 feet ENE of the YBI shoreline to assist in the construction of the overall bridge. Anchor lines extend approximately 800 feet north and south of the barges, anchor buoys are lighted at night with quick flashing white lights. Barges are lighted at night with steady burning red lights. See the Enclosure Section of this Local Notice to Mariners for the Barge Anchor Diagrams. For more details or comments contact the Eleventh Coast Guard District Bridge Office at 510-437-3461.

Chart 18650

LNLM: 50/05

**NORTHERN CALIFORNIA-BRIDGE-SAN JOAQUIN RIVER**

AVAILABILITY OF PUBLIC NOTICE - All interested parties are notified that an application has been received from the City of Lathrop by the Commander, Eleventh Coast Guard District for an extension of time to complete a new fixed bridge across a navigable waterway of the United States. The General Bridge Act of 1946 requires approval of the location and plans for bridges over navigable waters of the United States, prior to commencing construction. An amendment to Coast Guard Bridge permit P(1-07-11), dated February 23, 2007, will be required.

WATERWAY AND LOCATION: San Joaquin River, mile 54.2, at the City of Lathrop, San Joaquin County, California.

Public Notice (11-130a) dated September 6, 2011 is being published in the Coast Guard Navigation Website. The public notice contains a detailed description of the bridge project and includes location maps and bridge drawings with navigational clearances. Interested parties may access Active Public Notices for Bridge Projects for the Eleventh Coast Guard District at the following web site <http://www.navcen.uscg.gov/?pageName=pnBridges&Active=1&region=11> The public notice may also be obtained by calling the Eleventh Coast Guard District Bridge Office at (510) 437-3516, by writing to Commander (dpw), Eleventh Coast Guard District, Coast Guard Island, BLDG 50-2, Alameda, CA 94501-5100, by email request at David.H.Sulouff@uscg.mil or by facsimile request at (510) 437-5836.

**NORTHERN CALIFORNIA-BRIDGE-SAN JOAQUIN RIVER**

Mariners are requested to comment on the proposed time extension and navigational safety issues. Interested parties are requested to express their views in writing. Comments will be received for the record at the address given in Public Notice (11-130a) through October 7, 2011

Chart 18661

LNM: 36/11

**NORTHERN CALIFORNIA-BRIDGE-SAN JOAQUIN RIVER Current 06 Sep 11**

BRADSHAW'S CROSSING BRIDGE-New bridge construction through Nov 2012. Temporary trestles upstream and downstream of the bridge construction site will provide 100 feet of horizontal clearance at the center of the CHANNEL. Temporary falsework will span the river providing 20 feet of vertical clearance at Mean High Water. The temporary falsework/trestles will be lit at night with steady burning red lights. (See lighting enclosure at the end of this LNM). No in-water equipment is planned. For more details or comments, contact the City of Lathrop at (209) 992-0028 or RD 2062 at (209) 495-2871. Mariners are urged to use caution while transiting the work site.

Chart 18661

LNM: 28/11

**NORTHERN CALIFORNIA-BRIDGE-SAN JOAQUIN RIVER-Current 06 Sep 11**

ANTIOCH HIGHWAY BRIDGE – The tug Bay Cat/River Cat and a 110' X 30' barge, with a 60 ton crane, will be moored in the main ship channel, during daylight hours on 08-09 Sep 2011 and 12-16 Sep 2011, to install cross bracing to falsework at bridge piers. No anchor lines are proposed at this time. The barge can be moved with 10 minutes notice for navigational safety. Mariners can contact the tug on VHF-FM Ch 16 and 14 to determine conditions at the bridge. 24-HR contact numbers; Caltrans 510-385-7084, California Engineering Contractors; 925-250-1298, 925-354-3770, 925-519-5197.

Chart 18660

LNM: 42/10

**NORTHERN CALIFORNIA-BRIDGE-STEAMBOAT SLOUGH Updated 22 Aug 11**

STEAMBOAT SLOUGH DRAWBRIDGE- From 7 Sep 11 through 22 Nov 11 Caltrans will secure either leaf of the double bascule drawspan in the closed-to-navigation position, due to a painting project. The opposite leaf will continue to operate normally, and providing a horizontal clearance of 92 feet, between leafs. Containment installed on the underside of the secured leaf will reduce vertical clearance by approximately 6 feet.

Chart 18662

LNM: 33/11

**NORTHERN CALIFORNIA-COMMERCIAL POWER OUTAGE-ALCATRAZ LIGHT Updated 06 Sep 11**

The National Park Service will be securing commercial power to Alcatraz Light (LLNR-4315) from 0500 to 0900 local on 12, 19, 26 Sep 11. During periods of unavailable commercial power, Alcatraz Light will automatically shift to the emergency light operating at a reduced intensity of 09 NM nominal range. In addition, Alcatraz North Fog Signal (LLNR-4325) will begin operating continuously sounding 2 blasts every 30 seconds. Upon restoration of commercial power, affected aids will resume normal operation. For more details or comments contact U.S. Coast Guard Aids to Navigation Team at 415-399-3515.

Chart 18650

LNM: 35/11

**NORTHERN CALIFORNIA-DIVE OPERATIONS AND RESEARCH SITE-BODEGA BAY**

Bodega Harbor Dive Operations and Research Site. A research site has been set up in Bodega harbor off the shore from Westside Park between Channel Daybeacon 21 (LLNR 7880) and Channel Daybeacon 23 (LLNR 7890) on the west side of the channel. The site is 30-50ft inland from the channel markers and should not impact boating traffic. The sites are marked with PVC poles. There are two plots (1x10m) in the intertidal (~0ft MLW) and one plot in the subtidal (~8ft MLW). The subtidal plot is marked with a small orange buoy. Diving operations will be conducted at the site periodically until 01 Oct 11 in position: 38-19.240N 123-03.169W. Mariners are advised to transit the area with caution. For more details or comments contact Jessica Abbott at 919-622-5699.

Chart 18643

LNM: 25/11

**NORTHERN CALIFORNIA-DREDGING-NAPA RIVER**

Cooper Crane and Rigging Inc. will conduct dredging operations until 15 Oct 11 at the Napa Yacht Club in position:38-16-33.57N 122-17-01.02W Tugs HAYDEN BAY and SARAH REED will monitor VHF-FM Chan. 13, 14, and 82. Mariners are requested to use caution when transiting the area. For more details or comments contact Kevin Blair at 707-333-0587.

Chart 18652

LNM: 30/11

**NORTHERN CALIFORNIA-DREDGING-PORT OF OAKLAND**

Dutra will conduct continuous dredging operations until 30 Sep 11 in the Inner and Outer Oakland Harbor berths in position 37-48-38.25N 122-19-35.77W. D/B 24 and tug DOREEN BRUSCO will monitor VHF-FM Chan. 13, 14 and 82. Mariners are advised to use caution when transiting the area. For more details or comments contact John A. Krause at 415-254-4443.

Chart 18650

LNM: 31/11

**NORTHERN CALIFORNIA-DREDGING-PORT OF REDWOOD CITY CHANNEL**

Vortex Marine Construction will conduct dredging operations until 30 Nov 11 at the Port of Redwood City Channel in San Mateo County. The project location begins at approximate position 37-33-14N, 122-11-52W and ends at approximate position 37-30-24N, 122-12-53W. Disposal will take place at SF-11 Alcatraz Disposal Site. D/B Vengeance will monitor VHF-FM Chan. 13, 14, and 16. Mariners are advised to transit the area with caution. For more details or comments contact Edwin Enriquez at 510-261-2400.

Chart 18651

LNM: 35/11

**NORTHERN CALIFORNIA-DREDGING-RICHMOND MARINA BAY ENTRANCE CHANNEL**

Salt River Construction will conduct dredging operations until 28 Sep 11 at the Richmond Marina Bay Entrance Channel in approximate position: 37-54-32N, 122-21-30W. D/B JACK M, tug BRANDY BAR and towboat ISLAND CHAMPION will monitor VHF-FM Chan. 13, 14, and 78. There will be a



**NORTHERN CALIFORNIA-DREDGING-RICHMOND MARINA BAY ENTRANCE CHANNEL**

temporary lighted anchor ball in position 37-53.50N 122-24.00W. Mariners are advised to transit the area with caution. For more details or comments contact Rick Moseley at 415-435-1024.

Chart 18652

LNLM: 32/11

**NORTHERN CALIFORNIA-DREDGING-SAN FRANCISCO BAY**

Dutra Construction Company will conduct continuous dredging operations until 30 Sep 11 at BAE Shipyard Pier 4 East in the vicinity of position: 37-45-51N 122-23-02W. D/B PAULA LEE and tugs THOMAS and TROJAN will monitor VHF-FM Chan. 13, 14, and 80. Mariners are advised to use caution when transiting the area. For more details or comments contact Dennis Salyers at 415-497-5289.

Chart 18650

LNLM: 32/11

**NORTHERN CALIFORNIA-DREDGING-SAN RAFAEL CREEK**

Salt River Construction will conduct continuous dredging operations from 09 Sep 11 through 30 Nov 11 in the San Rafael Channel in position: 37-58-15N 122-29-53W. D/B 2, with tug IRENE LAURITZEN will monitor VHF-FM Chan 13, 14, and 78. Mariners are advised to transit the area with caution. For more details or comments contact Rick Moseley at 415-435-1024.

Chart 18654

LNLM: 36/11

**NORTHERN CALIFORNIA-DREDGING-STOCKTON DEEP WATER SHIP CHANNEL**

Ross Island Sand & Gravel Co. will conduct dredging operations until 09 Nov 11 at the Stockton Deep Water Channel in the vicinity of seven separate locations: (1) At approximate start positions 38-01-18N, 121-48-23W from 07 Sep 11 until 18 Sep 11. (2) At approximate start positions 38-01-42N, 121-46-14W from 19 Sep 11 until 26 Sep 11. (3) At approximate start positions 38-02-06N, 121-42-39W from 27 Sep 11 until 02 Oct 11. (4) At approximate start positions 38-02-24N, 121-42-05W from 03 Oct 11 until 07 Oct 11. (5) At approximate start positions 38-00-47N, 121-27-30W from 08 Oct 11 until 13 Oct 11. (6) At approximate start positions 37-59-43N, 121-25-13W from 14 Oct 11 until 19 Oct 11. (7) At approximate start positions 37-57-17N, 121-20-50W from 20 Oct 11 until 09 Nov 11. D/B 08 will monitor VHF-FM Chan. 13, 14, and 79. These zones will be marked with anchored 8' x 16' steel barges with 4' x 8' lighted signs advising of 5-MPH zones. All anchors are white in color and lit at night with white flashing lights. Mariners are advised to transit the area with caution. For more details or comments contact Randall H. Steed at 209-933-0609.

Chart 18661

LNLM: 35/11

**NORTHERN CALIFORNIA-GEOPHYSICAL SURVEY-GULF OF FARALLONES**

The R/V FULMAR will conduct a geophysical survey during daylight hours until 24 Sep 11 in an area bounded by the following coordinates: 37-51-00N 123-26-00W

37-40-00N 123-04-00W

The R/V FULMAR will monitor VHF-FM Chan. 13 and 16. Mariners are advised to use caution while transiting the area and requested to stay 500 yds from the survey vessel. For more details or comments contact Dave Minard at 831-277-0598.

Chart 18645

LNLM: 35/11

**NORTHERN CALIFORNIA-INSTALLATION OF AGRICULTURAL BARRIERS-MIDDLE RIVER, OLD RIVER**

The Department of Water Resources will install two agricultural barriers until 01 Nov 11 in the following positions:

Middle River Barrier 37-53-08N 121-28-56W

Old River Tracy Barrier 37-48-36N 121-32-35W

For more details or comments contact Mike Abioui at 916-653-6027. See Enclosures section for Middle River and Old River Near Tracy pdf.

Chart 18661

LNLM: 19/11

**NORTHERN CALIFORNIA-MARINE CONSTRUCTION-SAN FRANCISCO BAY**

Black & Veatch, Inc. will conduct a marine construction project to replace wire on a high voltage powerline that parallels that San Mateo Bridge from 06 Sep 11 until 30 Nov 11 in San Francisco Bay with temporary anchorages in approximate positions: 37-36-15N, 122-11-47W and 37-36-15N, 122-11-46W. The flat barge CSM DOGBONE will monitor VHF-FM Chan. 13, and 14. Mariners are advised to transit the area with caution. For more details or comments contact Donald Day at 909-203-9074.

Chart 18651

LNLM: 35/11

**NORTHERN CALIFORNIA-MARINE CONSTRUCTION-SAN FRANCISCO BAY Updated 22 AUG 11**

Vortex will conduct continuous pile driving operations and reconstruction of pier 43 until 12 Aug 12 in position 37-48-35N 122-24-37W. D/B VENGENANCE will monitor VHF-FM Chan. 13 and 14. Temporary anchorages have been established in positions: 37-48-38N 122-24-58W, 34-48-38N 122-24-55W, 37-48-36N 122-24-49W. Mariners are requested to transit the area with caution at a reduced wake. For more details or comments contact John Miller at 510-812-1084.

Chart 18650

LNLM: 28/11

**NORTHERN CALIFORNIA-MARINE EVENT-SAN FRANCISCO BAY**

South End Rowing Club will sponsor a swimming event involving 100 participants swimming from Crissy Field to Aquatic Park in San Francisco Bay from 0830 to 1000 on 11 Sep 2011. All mariners are advised to exercise caution when transiting this area. For more details or comments contact MST1 J. Clark at 415-399-7440.

Chart 18649

LNLM: 36/11

**NORTHERN CALIFORNIA-MARINE EVENT-SAN FRANCISCO BAY**

A private company will sponsor a swimming event involving 50 participants swimming from the South Tower of the Golden Gate Bridge to the Alpha

**NORTHERN CALIFORNIA-MARINE EVENT-SAN FRANCISCO BAY**

Tower of the Bay Bridge in San Francisco Bay from 0745 to 0945 on 10 Sep11. All mariners are advised to exercise caution when transiting this area. For more details or comments contact MST1 J. Clark at 415-399-7440.

Chart 18649

LNM: 36/11

**NORTHERN CALIFORNIA-PIER RECONSTRUCTION-TRINIDAD HEAD**

West Coast Contractors, Inc will be conducting pier reconstruction until 31 May 12 in the vicinity of 41-03-20N 124-08-41W. Mariners are advised to use caution when transiting the area. For more details or comments contact James Ammon at 530-739-3828 or Julian Koerner at 541-290-2300.

Chart 18605

LNM: 35/11

**SOUTHERN CALIFORNIA- MARINE CONSTRUCTION-SAN DIEGO BAY**

Marathon Construction Corporation will conduct continuous marine construction until 02 Apr 12 at the Naval Base Coronado Berths Juliet and Kilo in position: 32-42-43.92N 117-11-22.92W. Mariners are advised to use caution when transiting the area. For more details or comments contact Timothy G. Meyer at 619-843-8975.

Chart 18773

LNM: 32/11

**SOUTHERN CALIFORNIA-BRIDGE-MISSION BAY Current 06 Sep 11**

ROSE CREEK INLET- New pedestrian bridge construction is in progress during daylight hours, Monday through Friday, through Feb 2012. For more details or comments contact Fred Reichel, City of San Diego at 619-980-6883.

Chart 18765

LNM: 25/11

**SOUTHERN CALIFORNIA-BRIDGE-NAVY ESTUARY**

NIMITZ PEDESTRIAN BRIDGE- All navigational bridge lights are extinguished.

Chart 18773

LNM: 36/11

**SOUTHERN CALIFORNIA-CONSTRUCTION-LOS ANGELES-Updated 10 May 11**

Manson Construction will be conducting demolition and construction operations until 02 Feb 2013 in the vicinity of Piers D, E, and F, Berths D28-D31, E11-E27 and F1-F6 in position 33-45-46N 118-12-49W. D/B LOS ANGELES, D/B LONG BEACH, D/B VAHALLA, VALKYRIE, NORSEMAN with tugs PATCONA, LARCONA, ELMER M and JEFFERY M will monitor VHF-FM Chan. 13, 66, and 79A. Mariners are advised to use caution when transiting the area due to derrick barge anchor spread areas. For more details or comments contact Luis Camacho at 562-577-0718.

Chart 18751

LNM: 15/11

**SOUTHERN CALIFORNIA-DEMOLITION-SAN DIEGO BAY Updated 24 May 11**

R.E. Staite Engineering Inc. and Nielsen-Beaumont will commence a continuous marine construction project until 31 Dec 11 in position: 32-43-12N 117-13-30W at the Shelter Island Marina. D/B PALOMAR will monitor VHF-FM Chan. 16. Vessel operators are requested to transit the area with caution and proceed when passing arrangements have been made. For more details or comments contact Tom Nielsen at 619-233-0178 or 619-520-8119.

Chart 18773

LNM: 28/11

**SOUTHERN CALIFORNIA-DIVE OPERATIONS-MISSION BAY HARBOR ENTRANCE**

The USNS SIOUX ATF-171 will conduct dive operations until 12 Sep 11 in position: 32-43.5N 117-18.1W 2.75 NM South West of Mission Bay Harbor Entrance. USNS SIOUX will monitor VHF-FM Chan. 12, 13, 16. Mariners are requested to maintain a 500yd CPA for USNS SIOUX as the vessel will be in a three point moor. For more details or comments contact 619-533-7238.

Chart 18765

LNM: 36/11

**SOUTHERN CALIFORNIA-DIVING OPERATIONS-SANTA CRUZ ISLAND TO PURISIMA POINT**

Marine Project Management Inc. will conduct remotely operated vehicle diving operations until 25 Sep 11 in vicinity of Platform HERITAGE in position: 32-21-01N 120-16-49W. Support Vessels ALAN G, NORTHERN MARINE, WEST WARRIOR and DANNY C will monitor VHF-FM Chan. 16. Pre-set moorings and unlighted surface buoys with surface mooring wires will be used throughout the operations in positions:

- Buoy 1: 34-21-22N 120-17-05W
- Buoy 2: 34-21-14N 120-16-25W
- Buoy 3: 34-20-36N 120-16-26W
- Buoy 4: 34-20-47N 120-17-17W

Mariners are requested to maintain a 3/4 mile distance from Platform HERITAGE. For more details or comments contact David Hawkins at 805-798-2020.

Chart 18721

LNM: 32/11

**SOUTHERN CALIFORNIA-DREDGING-NEWPORT BAY**

Dutra will be conducting continuous dredging operations until 31 Oct 11 Rhine Channel in lower Newport Channel. Tugs TROJAN and BRUSCO TERRI L will monitor VHF-FM Chan. 13, 14, 16, and 82. A temporary equipment mooring site has been established at 33-36-40.12N 117-54-23.26W. Mariners are advised to transit the area with caution. For more details or comments contact Andrew Hunt at 415-847-6640.

Chart 18754

LNM: 29/11

**SOUTHERN CALIFORNIA-DREDGING/CONSTRUCTION-PORT OF LOS ANGELES Updated 06 Sep 11**

Manson Construction Co. is conducting construction and dredging operations until 31 Dec 13 in the construction zone from the northwest slip to

**SOUTHERN CALIFORNIA-DREDGING/CONSTRUCTION-PORT OF LOS ANGELES Updated 06 Sep 11**

Cabrillo Shallow Water Habitat. D/B VULCAN and tug JEFFREY will monitor VHF-FM Chan. 16, 66 and 67. D/B LOS ANGELES and tug DURANGO will continue rock placement on the submerged QR dike at the Northwest slip and will monitor VHF-FM Chan. 16 and 79A. Mariners are advised to use caution when transiting the area. For details or comments contact Brad Hunter at 562-762-5241 or Ron Allard at 562-577-0814. See Enclosures Section for 09 06 2011LNTM.pdf.

Chart 18751

LNM: 44/10

**SOUTHERN CALIFORNIA-GEOLOGICAL SURVEY-NEWPORT BEACH**

The U.S. Geological Survey will be conducting oceanographic instrument deployment off Newport Beach, CA until 01 Dec 11 in positions: 33-34.342N 117-50.690W Yellow surface buoy 1m dia. X 2M tall flashing amber .5 seconds on/ 3.5 seconds off. 33-33.567N 117-51.428W Yellow surface buoy 2.5m dia. X 2M tall flashing amber .5 seconds on/3.5 seconds off. Mariners are advised to use caution when transiting the area. For more details or comments contact George Tate at 831-427-4484.

Chart 18746

LNM: 30/11

**SOUTHERN CALIFORNIA-GEOPHYSICAL SURVEY-OCEANSIDE**

Sea Surveyor, Inc. will conduct a geophysical survey during daylight hours until 20 Sep 11 in positions:

North Survey Boundary:

33-13-44.43N 117-25-03.19W

33-13-15.14N 117-25-55.39W

South Survey Boundary:

33-11-10.22N 117-24-01.25W

33-11-38.52N 117-23-09.31W

The 70' R/V LIGHTNING and 25' M/V BETTY JO will display amber flashing lights and monitor VHF-FM Chan. 13 and 16 during survey operations. Mariners are advised to use caution while transiting the area and requested to stay 500 yards from the survey vessel. For more details or comments, contact Steve Sullivan at 707-246-3696. See Enclosures Section for Oceanside Survey Area.pdf

Chart 18774

LNM: 36/11

**SOUTHERN CALIFORNIA-GEOPHYSICAL SURVEY-POINT SAL TO POINT ARGUELLO**

The R/V DEREK M. BAYLISS will conduct geophysical surveys from 12 Sep 11 through 24 Sep 11 and monitor VHF-FM Chan. 13 and 16. Mariners are advised to use caution when transiting the area and requested to remain 500 yds from the survey vessel. For more details or comments contact David Robinson at 831-818-6112. See Enclosures section for USGSSouth.pdf and USGS\_NORTH.pdf for positions.

Chart 18700

LNM: 36/11

**SOUTHERN CALIFORNIA-GPS TESTING-RANCHO BERNARDO, CA**

The GPS navigation signal may be unreliable until 02 Apr 12 due to interference testing on GPS frequencies used in shipboard navigation and handheld systems. Electronic systems that rely on GPS, such as E-911, AIS, and DSC, may be affected within a 34 nm radius of position 33-01-04N, 117-05-45W. During this period, GPS users are encouraged to report any service outages by calling 703-313-5900 or by using the GPS Report a Problem Worksheet at [www.navcen.uscg.gov](http://www.navcen.uscg.gov).

LNM: 23/10

**SOUTHERN CALIFORNIA-HAZARDOUS OPERATIONS-SOUTH OF SAN CLEMENTE ISLAND**

The U.S. Navy will conduct continuous operations until 30 Sep 11, in an area bounded by the following coordinates:

32-33-00N 118-25-00W

32-35-00N 118-16-00W

32-35-00N 117-40-00W

31-55-00N 117-40-00W

31-55-00N 118-25-00W

32-33-00N 118-25-00W

Thence to the point of origin.

Mariners are advised to avoid this area and use due caution when transiting outside of this area. For more details or comments contact Darrel Rumsey at 619-545-1757.

Chart 18740

LNM: 30/11

**SOUTHERN CALIFORNIA-MARINE CONSTRUCTION-PORT OF LOS ANGELES**

The Port of Los Angeles will be conducting dock modification and construction operations starting on 5 Sep 2011 until 30 Sep 11 in the vicinity of the Los Angeles Maritime Museum, Berth 84, LA, in Position 33-44-19 N 118-16-43W. Ports Derrick barge with tug YANKEE will monitor VHF-FM Chan. 13. Mariners are advised to use caution when transiting the area due to derrick barge anchor spread area which will extend out into the Main Channel 150 feet. For more details or comments contact Otto Valencia; at 310-892-7402 or 310-732-3438

Chart 18751

LNM: 35/11

**SOUTHERN CALIFORNIA-MILITARY OPERATIONS-SAN DIEGO**

The U.S. Navy will conduct Amphibious Bulk Liquid Transfer System operations from 06 Sep 11 through 10 Sep 11: approximately 7600 feet from the coast of Green Beach, Silver Strand, Coronado. Mariners are requested to remain 500 yds from the mooring buoy TG-1 at position: 32-38-58N 117-10-44W. A conduit hose will be deployed from the barge to the beach marked at night with a string of solid white lights. All vessels involved will monitor VHF-FM Chan. 16 and 79A. For more details or comments contact EWTGPAC at 619-437-0754.

**SOUTHERN CALIFORNIA-MILITARY OPERATIONS-SAN DIEGO**

Chart 18772

LNM: 35/11

**SOUTHERN CALIFORNIA-OCEAN RESEARCH EQUIPMENT-OCEANSIDE**

MBC Applied Environmental Sciences has deployed oceanographic monitoring equipment until 05 Aug 12 offshore of the Santa Margarita River near Oceanside Harbor at an approximate depth of 90 feet in position: 33-12-24.5N 117-26-48.1W. A 4-foot yellow spar buoy will be sited above the equipment. Mariners are requested to transit with caution. For more details or comments Robert Moore at 714-850-4830.

Chart 18774

LNM: 30/11

**SOUTHERN CALIFORNIA-UNDERWATER DEBRIS REMOVAL-POINT SAL**

Aqueos, Inc. will conduct debris recovery operations from 06 Sep 11 through 30 Sep 11 in vicinity of:

- 34-55-39.4N 120-50-31.2W
- 34-55-23.4N 120-49-46.8W
- 34-54-48.0N 120-50-05.4W
- 34-55-04.1N 120-50-49.8W

The M/T SARAH and crewboat CRAIG G will monitor VHF-FM Chan. 16. A deck barge with a four point mooring system will be used. Mariners are advised to transit the above areas with caution. For more details or comments contact Jason Smith at 805-566-1462, Ext 111. See Enclosures Section for offshore PT SAL.pdf

Chart 18700

LNM: 35/11

**SOUTHERN CALIFORNIA-UNDERWATER SURVEY-SANTA BARBARA**

Fugro West Inc. will conduct an underwater survey from 09 Sep 11 through 15 Oct 11, offshore from PLATFORM HERITAGE to PLATFORM HARMONY to PLATFORM HONDO to shore in Capitan. M/V DANNY C and M/V TOBY TIDE will monitor VHF-FM Chan.13 and 16. Vessel has limited maneuverability and mariners are requested to use caution when transiting the area. For more details or comments contact Jeff Carothers or Eddie Stutts at 805-650-7000. See ENCLOSURES Section for SANTABARBARASURVEY.pdf

Chart 18721

LNM: 36/11

**SOUTHERN CALIFORNIA-WHALES-POINT CONCEPTION TO POINT DUME**

Large whales, including Blue whales, Humpback and Fin whales have recently been sighted around the Channel Islands, including south of the islands the Santa Barbara Channel and the Traffic Separation Scheme between Point Conception and Point Dume. These large whales are listed as endangered species and are protected under federal law. Mariners are advised to keep a sharp lookout for these large whales. NOAA strongly recommends that vessels 300 gross registered tons or larger transiting the traffic separation scheme do so at speeds not in excess of 10 knots. Please report any collisions with whales or any observed live, injured, or dead whales, including time and position, to NOAA at 877-SOS-WHALES (877-767-9425) or the U.S. Coast Guard.

Charts: 18720 18721 18725

LNM: 21/11

**SECTION VIII - LIGHT LIST CORRECTIONS**

An Asterisk \*, indicates the column in which a correction has been made to new information

(1) No.	(2) Name and Location	(3) Position	(4) Characteristic	(5) Height	(6) Range	(7) Structure	(8) Remarks
1593	Shelter Island Buoy 2	32-42-16.692N 117-14-02.328W					36/11
*	*	*	*	*	*	*	*
1595	SHELTER ISLAND WEST END LIGHT 4	32-42-28.302N 117-14-06.072W	Fl R 2.5s	15	4	TR on pile.	36/11
3270	San Pedro West Channel Buoy 1						Remove from list. 36/11
3275	<i>San Pedro West Channel Lighted Buoy 3</i>						Remove from list. 36/11
4671	<i>Anchorage 8 MTVA Lighted Mooring Buoy</i>						Remove from list. 36/11

**PUBLICATION CORRECTIONS**

None

---

---

## ENCLOSURES

---

### SOUTHERN CALIFORNIA-MARINE SAFETY INFORMATION BULLETIN

[MSIB Voluntary Traffic Lane 11-09.pdf](#)

See link above.

LNM: 09/10

### REPORT OF DELAY AT DRAWBRIDGE

[Delay Rept0207.pdf](#)

Use link above to Report a Delay at a Drawbridge.

LNM: 06/07

### NORTHERN CALIFORNIA-BRIDGE-SAN JOAQUIN RIVER

[LightingPlan.pdf](#)

See link above for information on Bradshaw's Crossing Lighting

Chart 18661

LNM: 28/11

### NORTHERN CALIFORNIA-BRIDGE-SAN FRANCISCO/OAKLAND BAY BRIDGE REPLACEMENT Current 29 Aug 11

[042210BargeDiagram.pdf](#) [AlternateChannel.pdf](#) [2009\\_Falsework.pdf](#)

See link above to view anchor diagram for work area, alternate channel marking diagram and falsework lighting.

LNM: 43/08

### SOUTHERN CALIFORNIA-UNDERWATER DEBRIS REMOVAL-POINT SAL

[offshore PT SAL.pdf](#)

See link above.

Chart 18700

LNM: 35/11

### NORTHERN CALIFORNIA-BRIDGE-14 MILE SLOUGH

[TemporaryTrestleLightingDiagram.pdf](#)

See link above for temporary trestle diagram for the I-5 Bridge widening project.

Chart 18662

LNM: 36/11

### NORTHERN CALIFORNIA-INSTALLATION OF AGRICULTURAL BARRIERS-MIDDLE RIVER, OLD RIVER

[Old River near Tracy barrier.pdf](#) [Middle River .pdf](#)

See link above.

LNM: 19/11

### SOUTHERN CALIFORNIA-DREDGING/CONSTRUCTION-PORT OF LOS ANGELES

[09 06 2011 LNTM.pdf](#)

See link above.

LNM: 44/10

### SOUTHERN CALIFORNIA-GEOPHYSICAL SURVEY-POINT SAL TO POINT ARGUELLO

[USGS\\_NORTH.pdf](#) [USGSSouth.pdf](#)

See link above.

Chart 18700

LNM: 36/11

### SOUTHERN CALIFORNIA-UNDERWATER SURVEY-SANTA BARBARA

[SANTABARBARASURVEY.pdf](#)

See link above.

Chart 18721

LNM: 36/11

### NORTHERN CALIFORNIA-BRIDGE-CALAVERAS RIVER

[BargeAnchorDiagram.pdf](#)

See link above for barge anchoring diagram for the I-5 Bridge widening project.

Chart 18662

LNM: 34/11

**SOUTHERN CALIFORNIA-GEOPHYSICAL SURVEY-OCEANSIDE**

[Oceanside Survey Area.pdf](#)

See link above.

Chart 18774

LNМ: 36/11

---

THE LOCAL NOTICE TO MARINERS IS AVAILABLE ON THE WORLD WIDE WEB AT [WWW.NAVCEN.USCG.GOV/](http://WWW.NAVCEN.USCG.GOV/).

M. J. Salas, LCDR  
U.S. Coast Guard  
Chief, Waterways Management Branch



## U. S. Coast Guard Sector Los Angeles – Long Beach

### MARINE SAFETY INFORMATION BULLETIN 11-09

#### **Los Angeles / Long Beach Harbor Safety Committee Voluntary Western Traffic Lanes**

There has been a recent trend in traffic patterns where some vessel operators are choosing to depart the Traffic Separation Scheme (TSS) established in the Santa Barbara Channel and transit through an area to the south of San Miguel, Santa Rosa and Santa Cruz Islands (referenced herein as “south of the Channel Islands”). As such, the Los Angeles / Long Beach Harbor Safety Committee has published voluntary western traffic lanes for vessels approaching and departing the Ports of Los Angeles and Long Beach.

Mariners transiting through the western and northern approaches to and from the Ports of Los Angeles and Long Beach (LA/LB) are advised the established TSS through the Santa Barbara Channel as shown on NOAA and Admiralty charts is the only International Maritime Organization (IMO) approved routing measure in this area. An IMO approved TSS reduces the risk of collision by providing for the separation of arriving and departing traffic and minimizing potentially hazardous crossing situations. Mariners, who have traditionally used this approved TSS, are encouraged to continue to do so.

#### **Voluntary Western Traffic Lanes**

To address the safety concerns created by increased traffic south of the Channel Islands, on October 6, 2009, the Los Angeles/Long Beach Harbor Safety Committee (LA/LB HSC) endorsed voluntary traffic lanes in the area south of the Channel Islands (referenced herein as “voluntary western traffic lanes.”). The LA/LB HSC developed these lanes as a voluntary measure to promote vessel safety.

The voluntary western traffic lanes were not developed using processes established under U.S. federal law or by the IMO. As such, these lanes have not been reviewed nor approved by any U.S. federal authority, including the U.S. Coast Guard, or the IMO. The Coast Guard is taking separate action to study the increased traffic in this area, which will include an opportunity for the public to comment.

The geographical coordinates for the voluntary western traffic lanes are published by the LA/LB HSC secretary at <http://www.mxsocal.org/Blogs/24/Voluntary-Routing-Zones.aspx>

Since the new voluntary western traffic lanes are not an IMO approved traffic separation scheme, the International Regulations for Avoiding Collisions at Sea (COLREGS) Rule 10 does not apply.

Mariners should exercise due caution when choosing to operate south of the Channel Islands and within the voluntary western traffic lanes.

### **Pacific Missile Test Range, Point Mugu**

Departing the IMO approved TSS and transiting south of the Channel Islands may result in delays and diversions, as this transit will take vessels through the Pacific Missile Test Range, Point Mugu, California. **The U.S. Navy advises that hazardous operations may take place within the test range.** The test range extends for 180 miles in a South West direction from Point Mugu and is up to 210 miles wide. The specific hazardous areas within the range are broadcast by the Navy daily Monday through Friday at 0900 and 1200 on 2638 kHz and 2738 kHz. When notified by the Navy, the Coast Guard also broadcasts this information on VHF-FM channel 16.

When transiting south of the Channel Islands (inbound or outbound to the Ports of Los Angeles and Long Beach), all mariners should communicate with Navy PLEAD CONTROL in a timely manner so that early decisions can be made regarding safe routing. Every effort should be made to comply fully with any instructions received from the Navy. For information regarding the status of current hazardous operations contact “PLEAD CONTROL” on VHF Marine channel 11 or 16, or at (805) 989-8841/8843 from 0600-1800, and at (805) 816-0792 after 1800. If you are unable to contact “PLEAD CONTROL”, contact “SAN PEDRO TRAFFIC” on VHF-FM channel 14 or (310) 832 6411 for the most recent information regarding hazardous military operations.

The Navy requests all vessels transiting the range to submit a notification to PLEAD CONTROL indicating the vessel name, destination, and estimated time of entry into, and departure from, the test range. Notifications can be faxed to (805) 989-0102.

### **Whales**

Mariners are further reminded that large whales, including Blue, Gray, Humpback, and Fin whales, as well as other marine mammals, have been sighted in and around the Channel Islands, both within the TSS established in the Santa Barbara Channel as well as in the area south of the Channel Islands. These whales are all protected under federal law and some are listed as endangered species. Please report any collisions with whales or any observed live, injured, or dead whales, including time and position, to the National Oceanographic and Atmospheric Administration (NOAA) at 877-SOS-WHAlE (877-767-9425) or the Coast Guard.

### **Recreational and Fishing Vessels**

The area to the south of the Channel Islands is also used by both commercial fishing vessels and recreational vessels, whose operators may not be aware of the new voluntary western traffic lanes or that ship traffic has recently increased in this area.

### **Questions**

Questions relating to the voluntary western traffic lanes should be directed to the LA/LB HSC Secretary at (310) 832-6411.



**U.S. COAST GUARD  
REPORT OF DELAY AT DRAWBRIDGE  
PER 33 CFR 117.5**

BRIDGE NAME \_\_\_\_\_ DATE \_\_\_\_\_

MILE \_\_\_\_\_ WATERWAY \_\_\_\_\_

1. Name/ Type of Vessel \_\_\_\_\_ Direction of Travel \_\_\_\_\_

2. Vessel Owner (Name) \_\_\_\_\_  
(Address) \_\_\_\_\_

3. Name of Pilot (if applicable) \_\_\_\_\_  
(Address) \_\_\_\_\_

4. Time vessel signaled for bridge opening \_\_\_\_\_

5. Location of vessel when signal was given \_\_\_\_\_

6. Time and location of vessel when delay began \_\_\_\_\_

7. Method of signal for bridge opening ( ) Radio ( ) Sound ( ) Visual  
(If sound or visual signal was used, specify \_\_\_\_\_)

8. Time bridge operator acknowledged signal \_\_\_\_\_

9. Method of bridge operator acknowledgement ( ) Radio ( ) Sound ( ) Visual  
(If sound or visual signal was used, specify \_\_\_\_\_)

10. Did bridge operator acknowledgement indicate the bridge  
( ) Could be opened immediately  
( ) Could not be opened immediately

11. If land traffic crossed the bridge:  
Time land traffic started across the bridge \_\_\_\_\_  
Time land traffic stopped crossing the bridge \_\_\_\_\_  
Did land traffic stop on the bridge? \_\_\_\_\_  
Duration land traffic stopped on the bridge \_\_\_\_\_

12. Time drawbridge opened for navigation \_\_\_\_\_

14. Additional comments \_\_\_\_\_

\_\_\_\_\_

\_\_\_\_\_

\_\_\_\_\_

I certify the above information is true to the best of my knowledge and understand this statement may be used by the U.S. Coast Guard in levying fines against the bridge owner.

Signature \_\_\_\_\_

Telephone \_\_\_\_\_

Mariners may complete and send via fax or mail to:

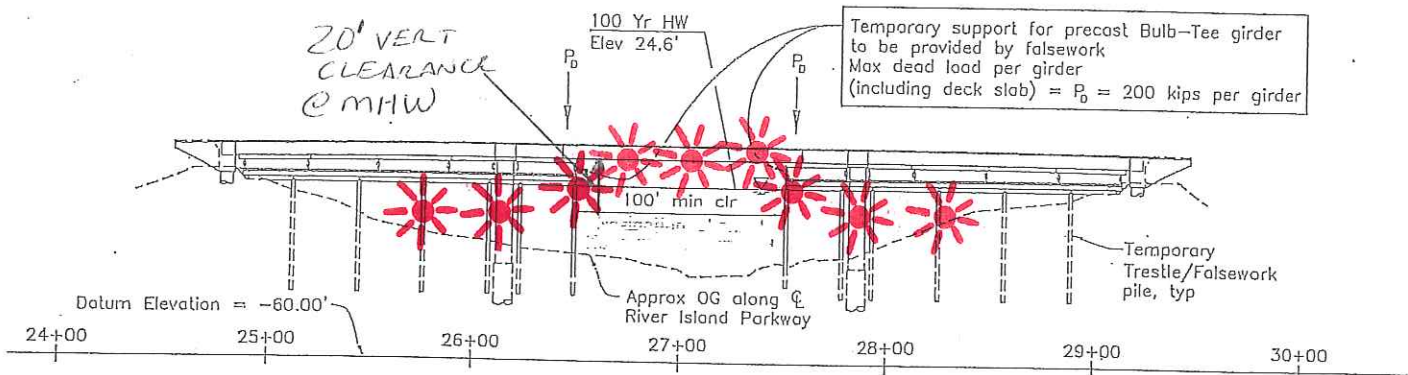
USCG D11(dpw) Bridge Administration  
Building 50-2  
Coast Guard Island  
Alameda, CA 94501-5100  
**Cellular: (510) 219-4366**, Work Phone: (510) 437-3516  
Work Fax: (510) 437-5836

Mariners are reminded not to require bridge openings for appurtenances nonessential to navigation, per 33 CFR 117.11

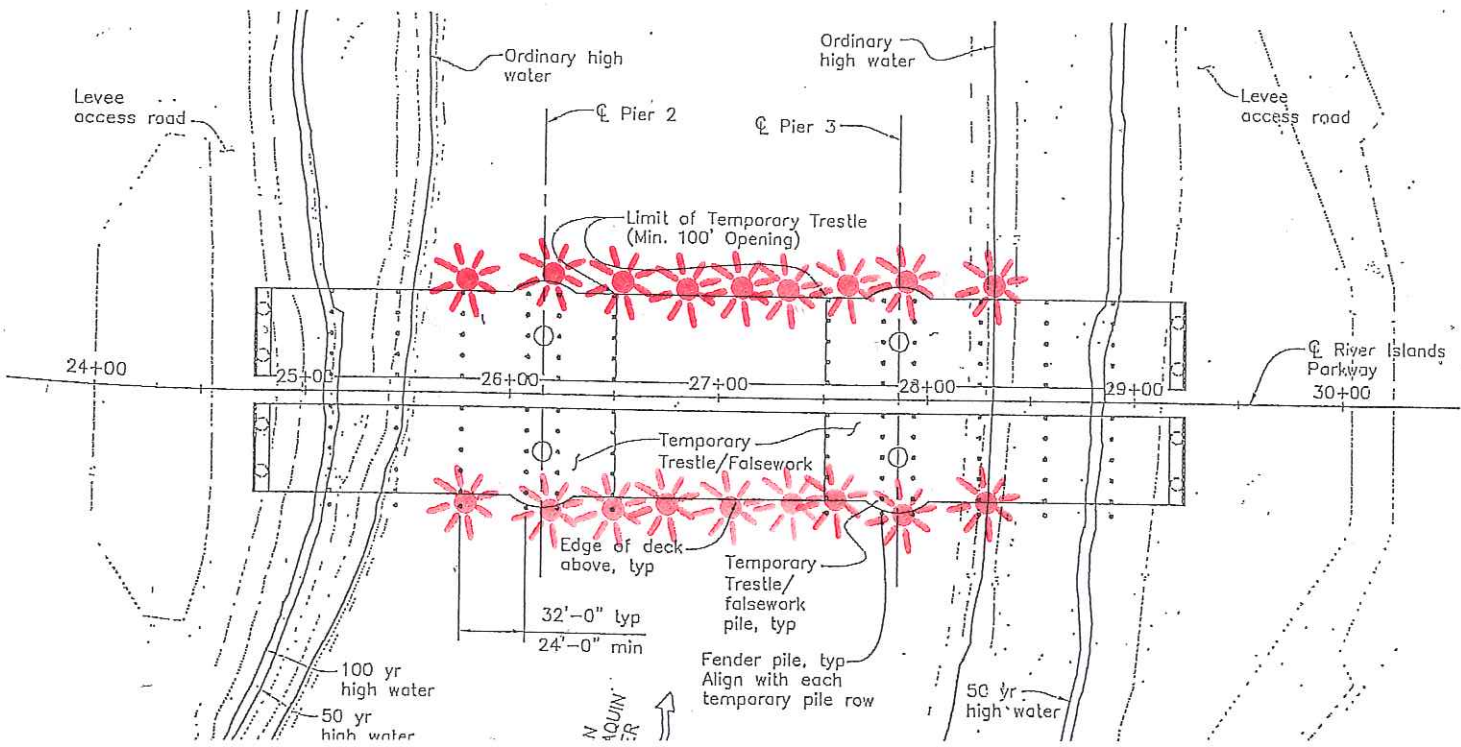
# Temporary Trestle Lighting Diagram

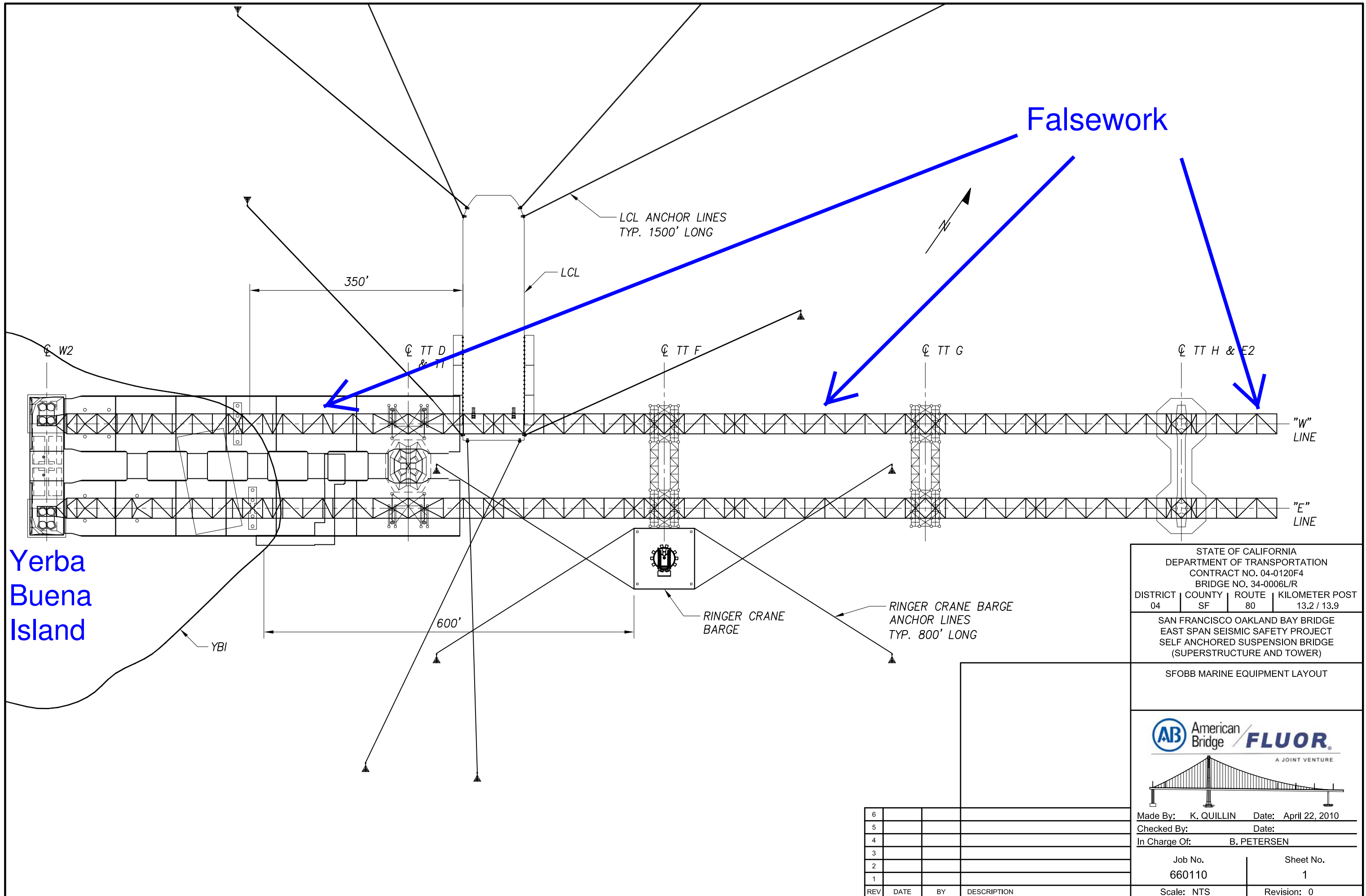
## Bradshaw's Crossing Bridge Mile 54.2, San Joaquin River

The upstream and downstream corners of the trestle, adjacent to the main navigation span, shall be lighted at night with steady burning red lights, visible at 2,000 yards by approaching vessels. All wet trestle columns shall be lighted at night with steady burning red lights, visible at 2,000 yards by approaching vessels. The lights on the columns shall be mounted at least 1 feet above the 100 year flood mark. Steady burning red lights, visible at 2,000 yards by approaching vessels, shall be placed upstream and downstream on the over-the-channel falsework and shall be spaced every 25 feet.



**TEMPORARY TRESTLE / FALSEWORK**  
1"=40'-0"





Falsework

LCL ANCHOR LINES  
TYP. 1500' LONG

LCL

350'

W2

TT D  
& TT

TT F

TT G

TT H & E2

"W"  
LINE

"E"  
LINE

Yerba Buena Island

YBI

600'

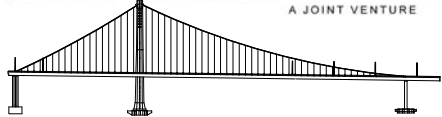
RINGER CRANE BARGE

RINGER CRANE BARGE ANCHOR LINES  
TYP. 800' LONG

STATE OF CALIFORNIA  
DEPARTMENT OF TRANSPORTATION  
CONTRACT NO. 04-0120F4  
BRIDGE NO. 34-0006L/R  
DISTRICT 04 COUNTY SF ROUTE 80 KILOMETER POST 13.2 / 13.9

SAN FRANCISCO OAKLAND BAY BRIDGE  
EAST SPAN SEISMIC SAFETY PROJECT  
SELF ANCHORED SUSPENSION BRIDGE  
(SUPERSTRUCTURE AND TOWER)

SFOBB MARINE EQUIPMENT LAYOUT



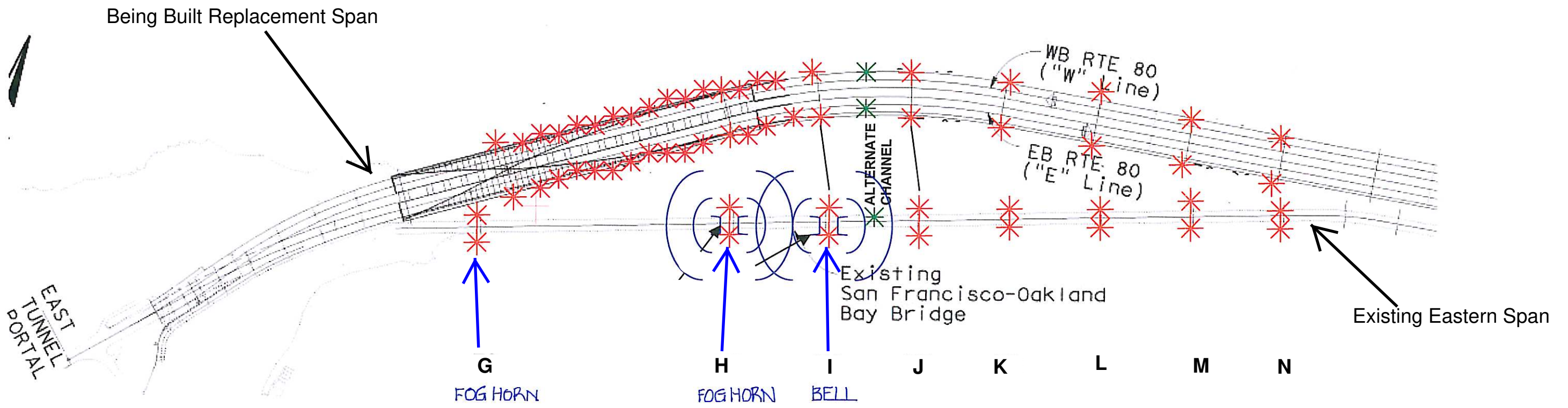
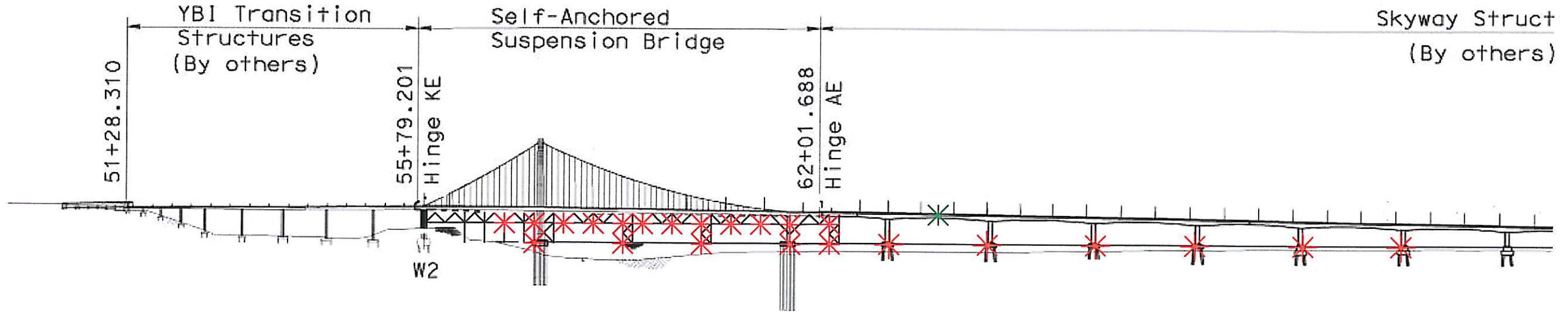
Made By: K. QUILLIN Date: April 22, 2010  
Checked By: Date:  
In Charge Of: B. PETERSEN

Job No. 660110 Sheet No. 1

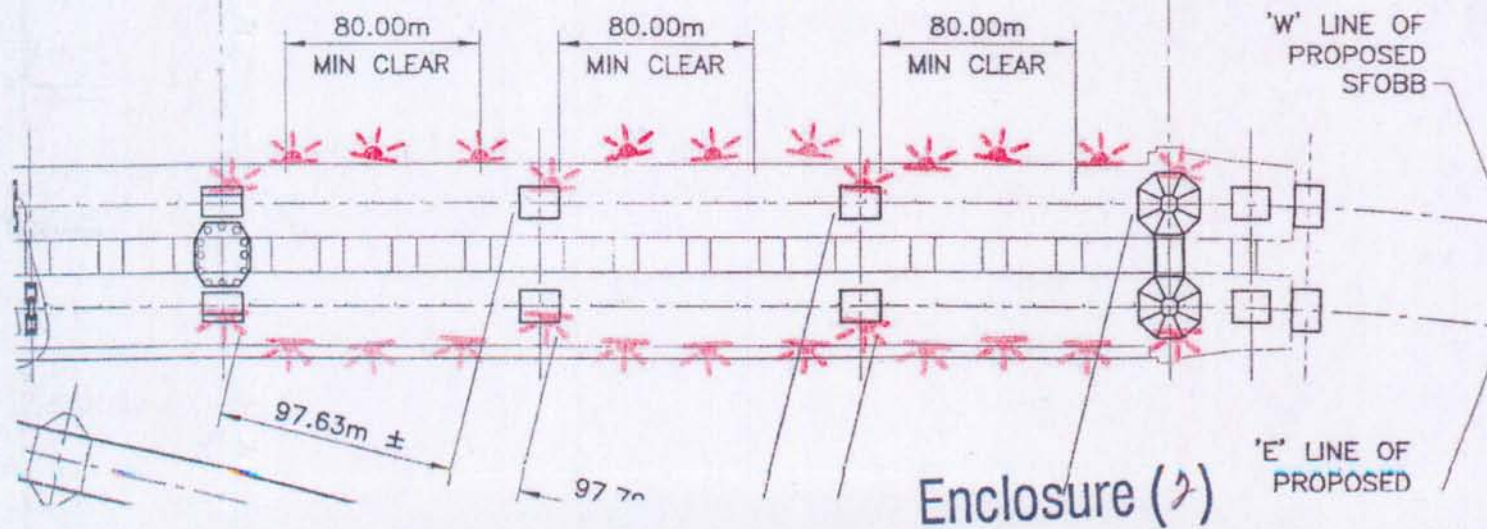
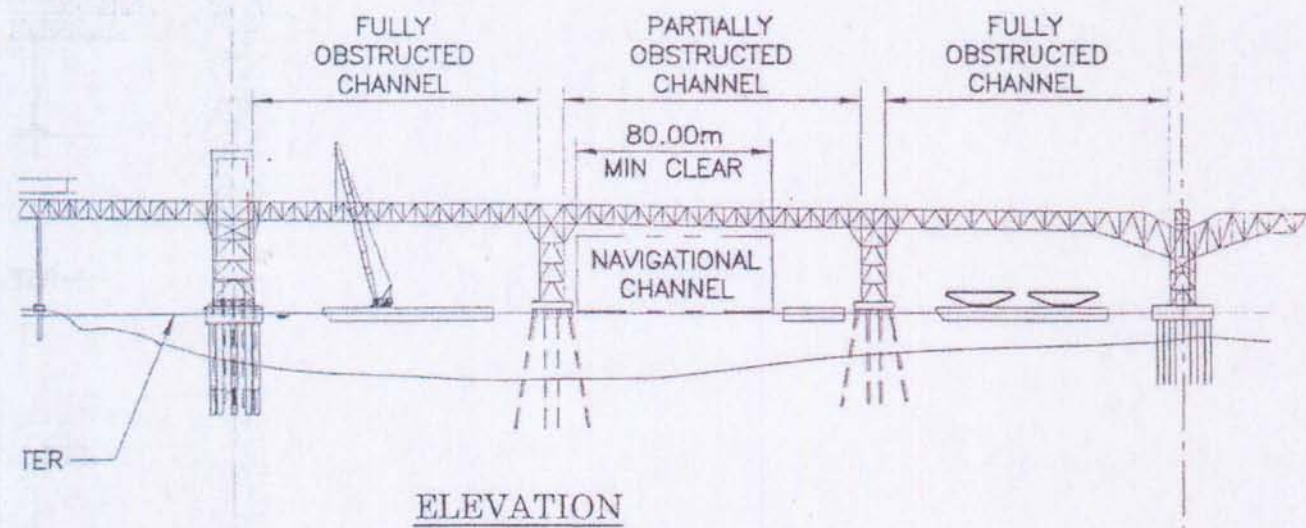
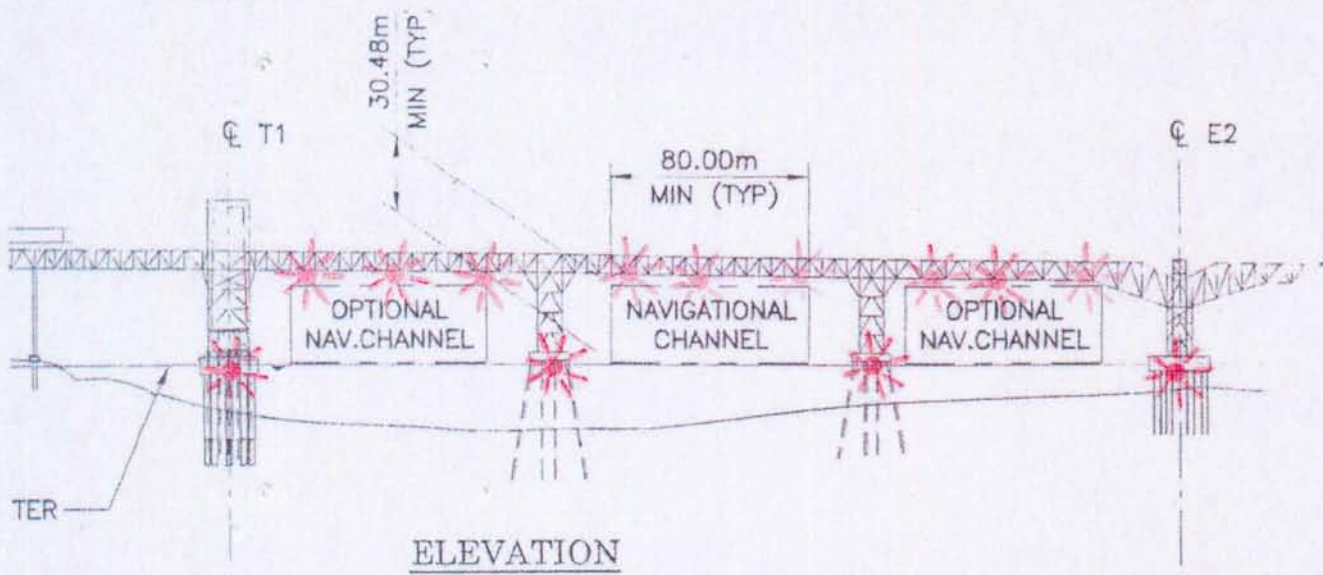
Scale: NTS Revision: 0

6			
5			
4			
3			
2			
1			
REV	DATE	BY	DESCRIPTION

# CONSTRUCTION NAVIGATION WARNING SYSTEM

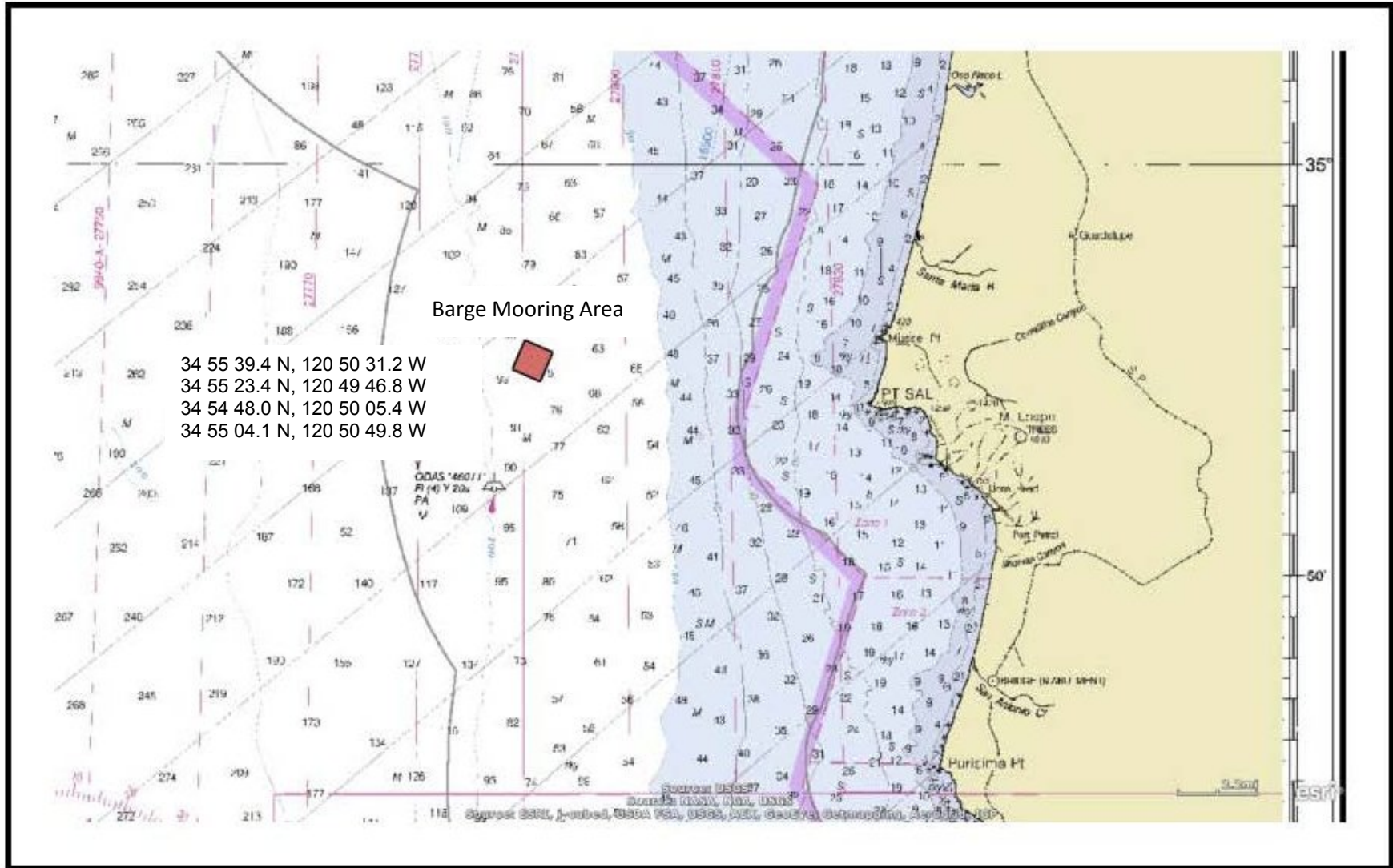


RECEIVED 04/21/10



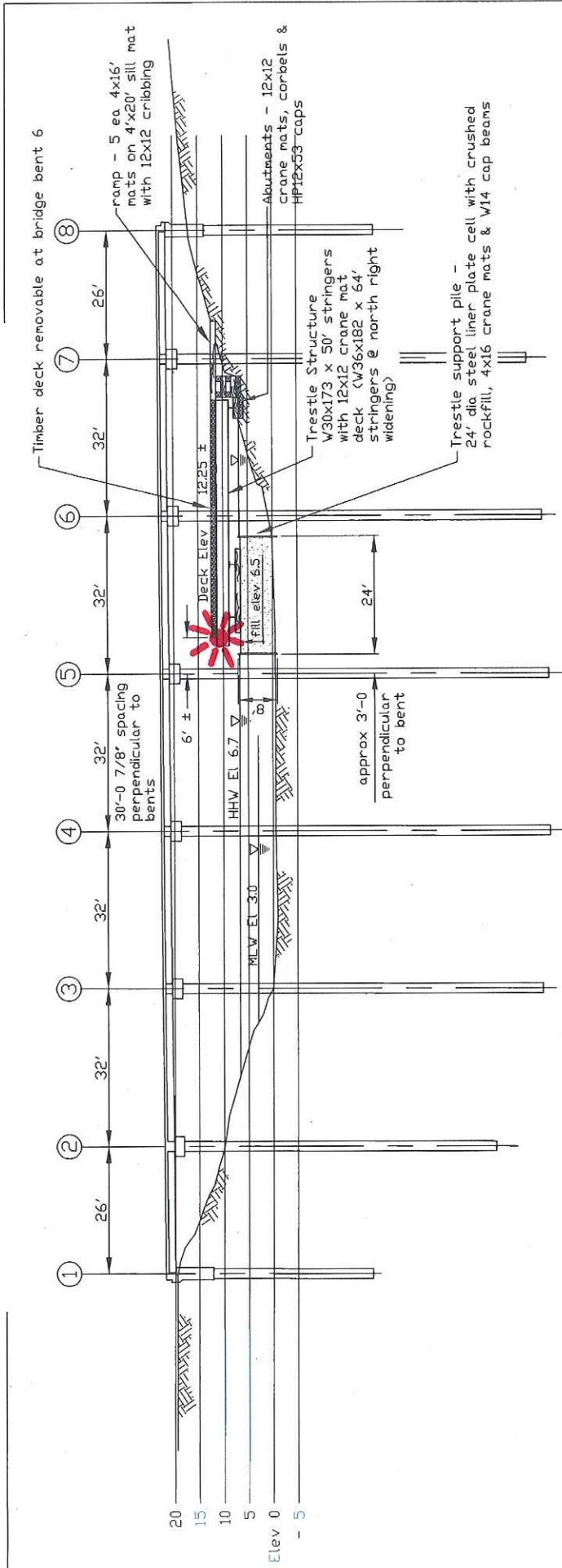
# NOAA NAUTICAL CHART 18700 WITH MOORING AREA

Seafloor Debris Removal  
Offshore Point Sal, California




# I-5 Bridge Widening Project, Mile 6.0, 14 Mile Slough

## Temporary Trestle Lighting



The upstream and downstream corners of the temporary trestle shall be lighted at night, and in periods of reduced visibility, with steady burning all-round red lights visible at 200 yards by approaching vessels.

 <b>R&amp;L BROSAMER</b> 1777 Oakland Blvd., Ste 300 Walnut Creek, CA 94596	I5 Stockton 8th St to Hammer Lane California Department of Transportation Contract No. 10-0G4704		REVISION NO. 0 DATE 08-12-2011 DRAWN BY j beighner	<b>FOURTEEN MILE SLOUGH BRIDGE</b> BENT 3 - 6 TRESTLE ACCESS		SCALE 1 in. = 20 ft JOB NO. DRAWING NO. 1 of 2







# **NOTIFICATION OF VESSEL OPERATIONS**

**Date: September 06, 2011**

**To: U.S. Coast Guard, Marine Safety Group**

**Attn: BM2 Guy Langman**  
1001 Seaside Ave., Bldg 20  
San Pedro, CA 90731  
(310) 521-3867

**From: LA Deepening Constructors**

772 Tuna Street  
San Pedro, CA 9023  
(310) 521-1300 Phone  
(310) 833-5657 Fax

## **COMMENTS:**

The Manson spill barge will continue extending the electric power at Berth 233 today. The cable, from the substation at Berth 173, is laid on the bottom to the Manson spill barge.

The rigs use Channel 67 and monitor channels 66 & 16. Attached is a graphic outlining the Berth 233 Area. For questions, please call Brad Hunter at (562) 762-5241.

The following contacts may be called in case of emergency:

Brad Hunter,	Project Engineer	(562) 762-5241
Eric Faria,	Dredge Captain	(562) 762-5396
Tim O'Neil,	Field Engineer	(310) 762-5724
	DB Vulcan	(562) 762-5259

Sheet  
1 of 1

USACOE  
POLA Channel Deepening  
Project  
DACV09-02-C-008-R00104  
Cerritos Channel  
Dredge Element D210

Notes:  
Surveyed By:  
Survey Date:  
Plot Date:  
Drawn By:  
Checked By:  
Drawing Name:

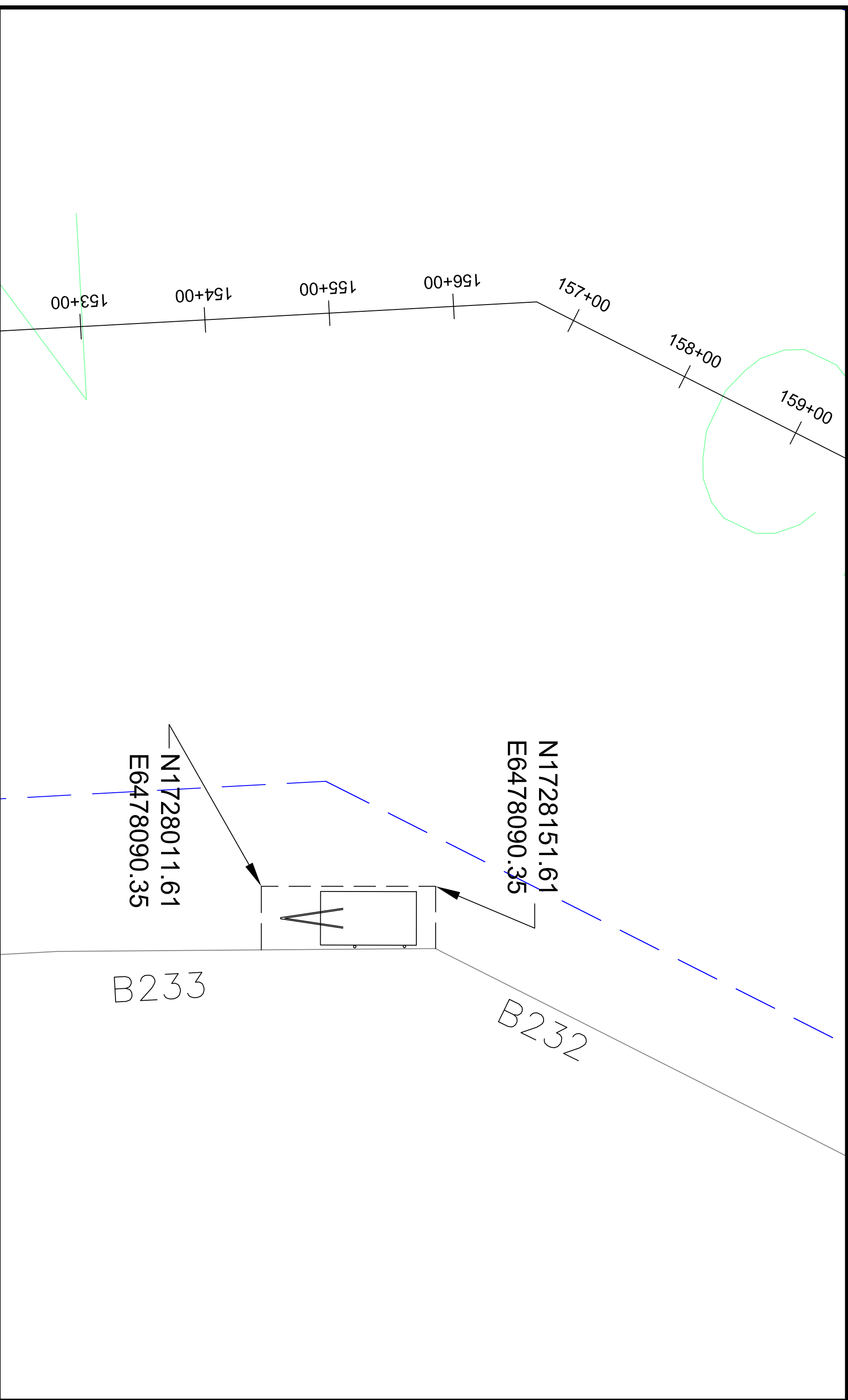
Datum:  
Horizontal: State of California Zone 5 - 83 ft  
Vertical: MLLW ft

N1728011.61  
E6478090.35

L A D E E P E N I N G C O N S T R U C T O R S , a J V



772 TUNA STREET SAN PEDRO, CA 90731-7378 PHONE: 310-521-1300 FAX: 310-833-9657



Point Sur

— CA State Waters

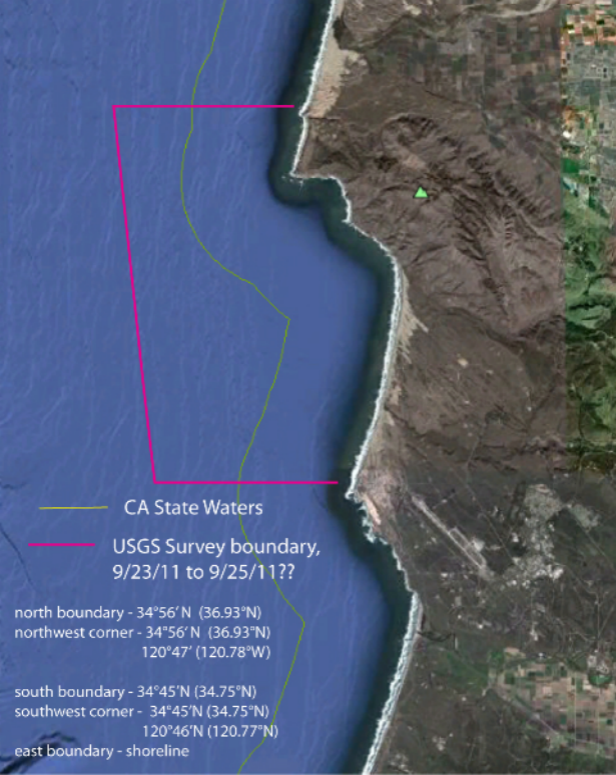
— USGS Survey boundary,  
9/12/11 to 9/24/11

north boundary -  $36^{\circ}18' N$  ( $36.30^{\circ}N$ )  
northwest corner -  $36^{\circ}18' N$  ( $36.30^{\circ}N$ )  
 $121^{\circ}58' W$  ( $121.97^{\circ}W$ )

south boundary -  $35^{\circ}40' N$  ( $35.67^{\circ}N$ )  
southwest corner -  $35^{\circ}40' N$  ( $35.67^{\circ}N$ )  
 $121^{\circ}21' W$  ( $121.35^{\circ}W$ )

east boundary - shoreline

Piedras Blancas



— CA State Waters

— USGS Survey boundary,  
9/23/11 to 9/25/11??

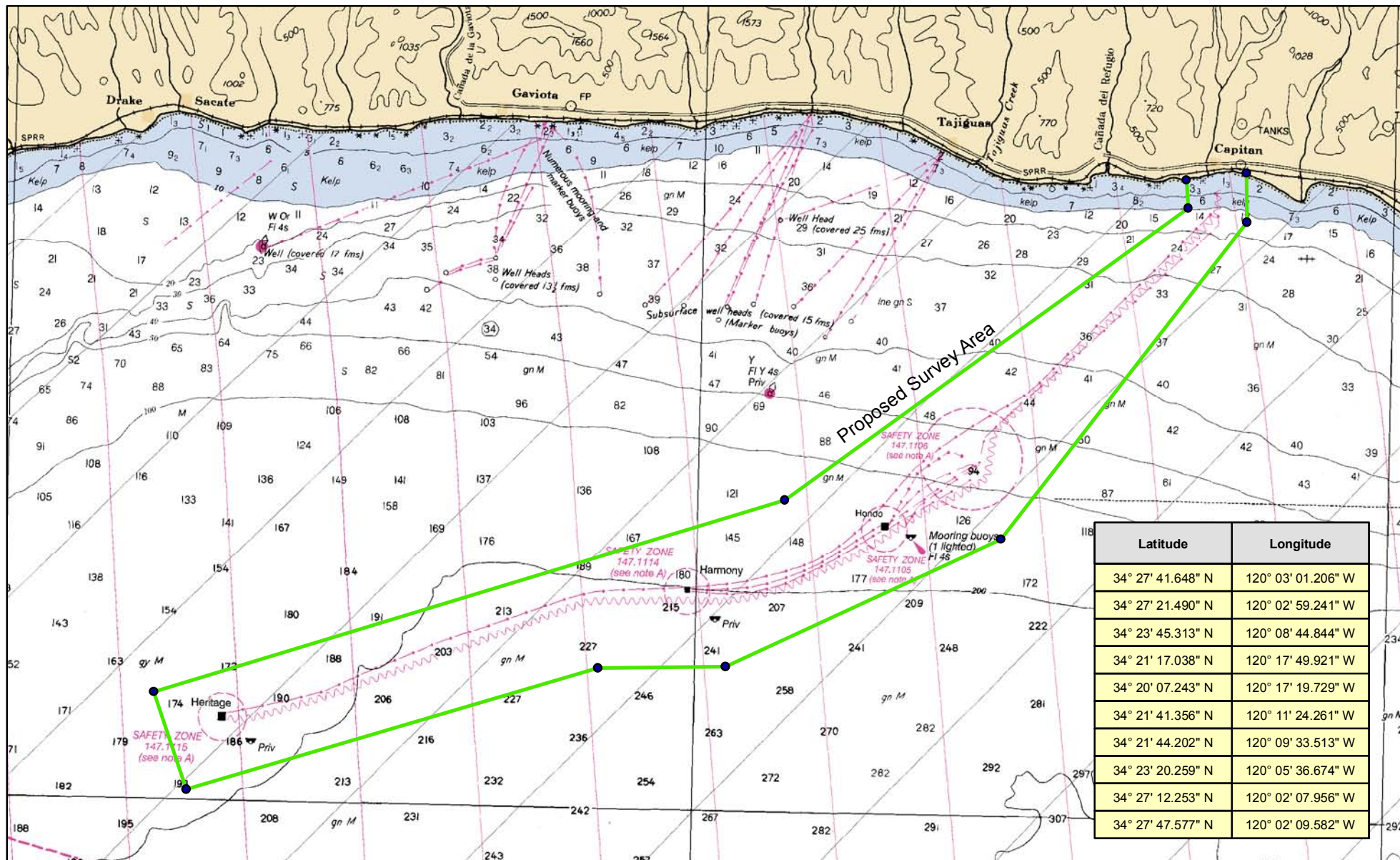
north boundary -  $34^{\circ}56' N$  ( $36.93^{\circ}N$ )  
northwest corner -  $34^{\circ}56' N$  ( $36.93^{\circ}N$ )  
 $120^{\circ}47'$  ( $120.78^{\circ}W$ )

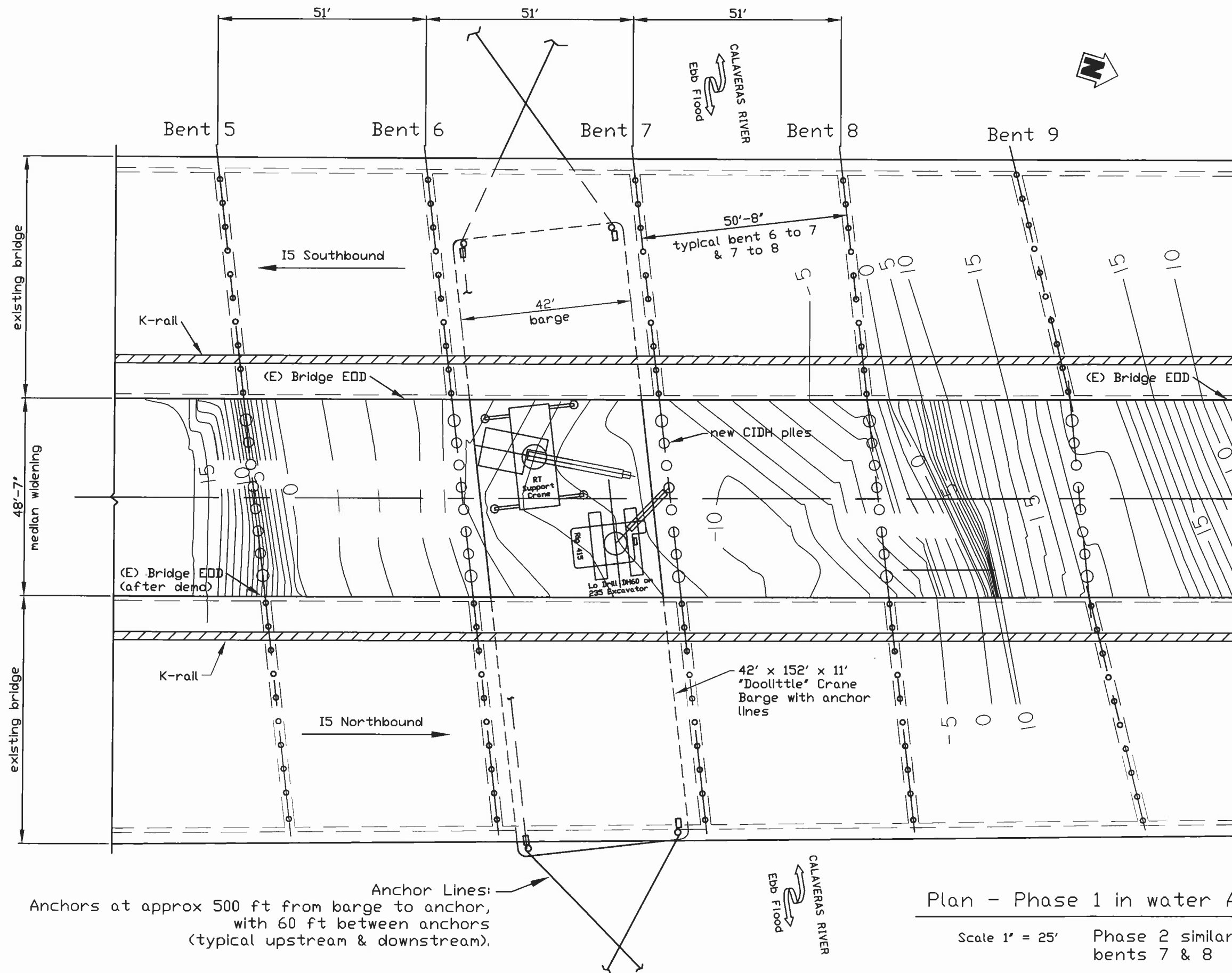
south boundary -  $34^{\circ}45' N$  ( $34.75^{\circ}N$ )  
southwest corner -  $34^{\circ}45' N$  ( $34.75^{\circ}N$ )  
 $120^{\circ}46' N$  ( $120.77^{\circ}N$ )

east boundary - shoreline

# NOAA NAUTICAL CHART 18721 WITH PROPOSED SURVEY AREA

Seafloor Mapping Geophysical Survey Notice  
Offshore Santa Barbara County, California





Floating caution signs to be provided reading  
 "Danger - Floating construction equipment with anchors deployed ahead. Proceed with caution!"  
 Provide one sign at 500 ft upstream & one @ 500 ft downstream

Site Location:  
 Interstate 5 at Calaveras River, Stockton, Ca  
 Latitude N 37°58'45"  
 Longitude W 121°20'29"

Anchor Lines:  
 Anchors at approx 500 ft from barge to anchor, with 60 ft between anchors (typical upstream & downstream).

Plan - Phase 1 in water Access

Scale 1" = 25' Phase 2 similar with barge between bridge bents 7 & 8

 <b>R&amp;L BROSAMER</b> 1777 Oakland Blvd. Ste 300 Walnut Creek, CA 94596	<b>15 Stockton 8th St to Hammer Lane</b> <b>California Department of Transportation</b> <b>Contract No. 10-0G4704</b>	REVISION NO. 0 DATE 08-17-2011 DRAWN BY j beightler	<b>CALAVERAS RIVER BRIDGE</b> <b>IN WATER CONSTRUCTION ACCESS</b>	SCALE 1 in = 25 ft JOB NO: DRAWING NO. 3 of 3

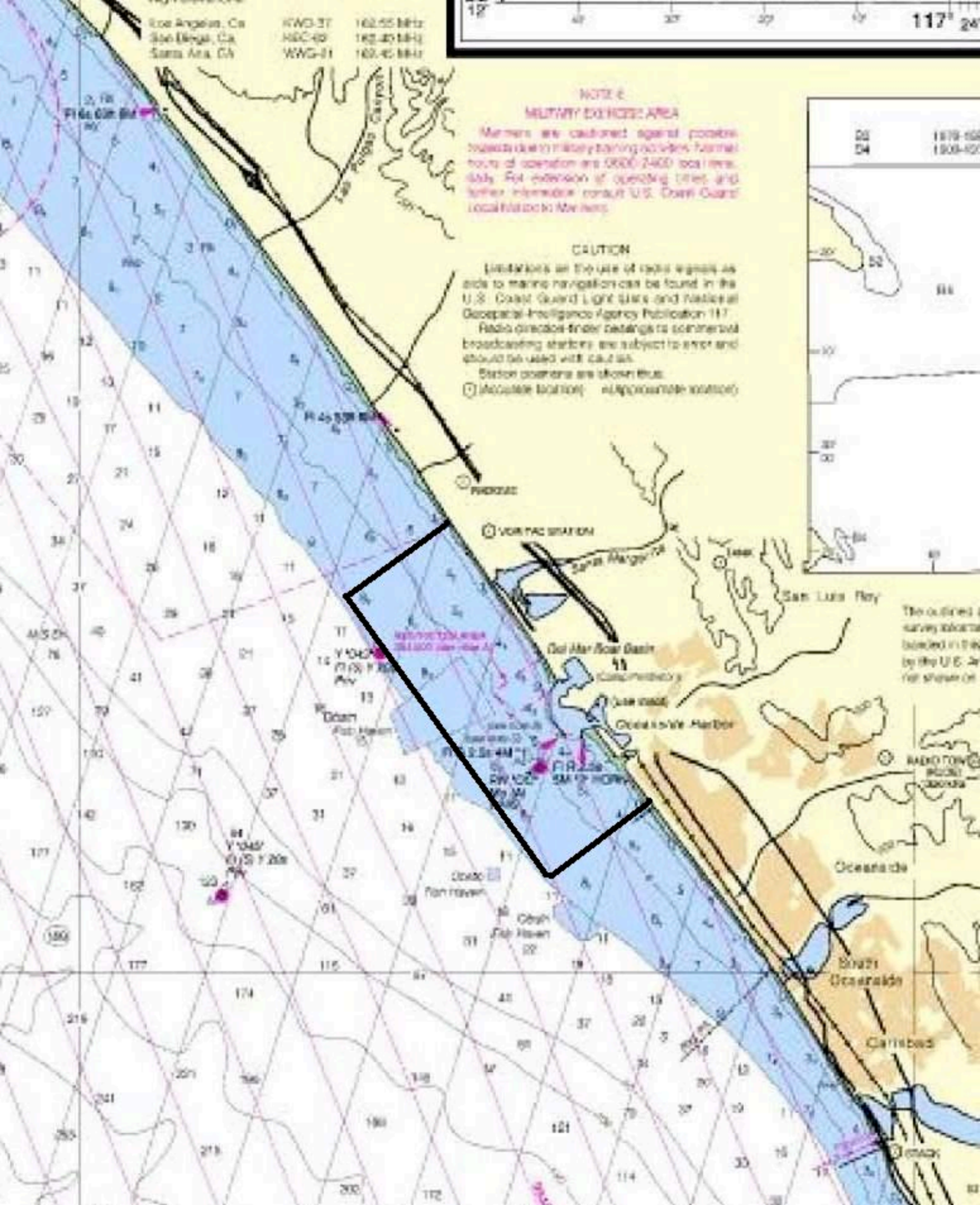
Los Angeles, Ca KWO-37 162.55 MHz  
 San Diego, Ca NDC-49 162.45 MHz  
 Santa Ana, Ca WAG-11 162.45 MHz

**NOTE E**  
**MILITARY EXERCISE AREA**

Mariners are cautioned against possible hazardous military training activities. Normal hours of operation are 0800-2400 local time daily. For extension of operating times and further information contact U.S. Coast Guard Local Station in Monterey.

**CAUTION**

Disturbance in the use of radio signals as aids to marine navigation can be found in the U.S. Coast Guard Light Lists and National Geospatial-Intelligence Agency Publication 117. Radio direction finder bearings to commercial broadcasting stations are subject to error and should be used with caution. Station positions are shown thus:  
 (1) Accurate location (2) Approximate location



The outlined survey station located in the bay by the U.S. Coast Guard.

Oceanside Harbor  
 Oceanside  
 Carlsbad  
 San Luis Rey  
 San Marcos  
 San Juan Capistrano