

WINTER 2014 FourWord

www.iowa4hfoundation.org

In This Issue:

Partnering Up for Iowa's 4-H Youth

*Barb Determan's Leadership
Formula for Success*

Plus:

- 2015 Gala
- Annual Report
- Scholarships
- 4-H'ers for 4-H
- Brandt Gift
- and MORE!

On the Cover: Barb Determan Photo Courtesy: Ann Trimble-Ray, Heartland Marketing Group, Inc.

Calendar.....	3
Memorials.....	8
Annual Report.....	10
Board & Staff.....	16



Welcome New Board Trustees

At the Iowa 4-H Foundation Annual Board meeting in October, four new trustees were elected to serve on the Board of Trustees.



Tina Greiman works in market research at MarketSense, Inc of Perry, Iowa where she and her family currently reside.

Greiman was a 4-H member in Wisconsin where her main focus was beef and showing steers and Hereford heifers at local, state and regional shows. Her three children are members of the Sugar Grove Sunshine 4-H Club in Dallas Center and she enjoys volunteering for many local 4-H activities. Greiman holds a Bachelor's Degree in Animal Science from Iowa State University.



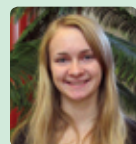
Curt Lang spent 25 years in the ag equipment business where he served on John Deere's dealer advisory council. Today, he manages his family farm in partnership with his brother in Grinnell, Iowa. "4-H provided me a jump-start into production agriculture. From my first pen-of-three swine project to the details of accurate recordkeeping, I've utilized those valuable skills in my various business experiences. Now, it's time to give a portion of that back!"

Eric holds an Agricultural Business Bachelor's Degree from Iowa State University with minors in finance and economics. Marzen and his family currently reside in Waukee, Iowa.



Eric Marzen, a native of Stacyville in Mitchell County, Iowa, is a 17-year veteran of *Successful Farming Magazine*.

Eric holds an Agricultural Business Bachelor's Degree from Iowa State University with minors in finance and economics. Marzen and his family currently reside in Waukee, Iowa.



Kaitlyn Varner is a senior at Northwood High School in Worth County. She is a second-year member on the State 4-H Youth Council and also served on the Worth County Council.

"4-H has shaped me into the person I am today and has given me endless opportunities," says Varner about her 4-H involvement. Varner plans to attend Iowa State University in the fall of 2015. 🍀

Letter from Board President, Bob Butcher



I am truly honored to become the new president of the Iowa 4-H Foundation Board of Trustees. A little over five decades ago, I was one of five new members that joined the Battle Badgers 4-H Club in Ida County. I proudly answered the roll call and gave my membership dues of a dime to the club treasurer. I am as excited now as I was then to leap into a new adventure.

Little did I know that 4-H was a stepping stone into a big world filled with memories that would last a lifetime. Many of those memories included the Iowa State Fair, AK-SAR-BEN Livestock Show in Omaha and National 4-H Congress in Chicago. I am confident that anyone reading this newsletter has their own great memories of growing up a 4-H member.

As I think about some of the other kids that were at that first meeting with me, one is now a nationally known swine veterinarian, two brothers own a large chain of banks in Iowa, two brothers are nationally known purebred cattle auctioneers, one is a pharmacist, one was the manager of the athletic ticket office for University of Minnesota and three are proud Vietnam veterans. I believe that they credit their success to the early understanding of leadership, sportsmanship and stewardship that was taught in that 4-H club.

Our challenge at the Iowa 4-H Foundation going forward is to continue to help provide opportunities and support for all 4-H youth throughout the state of Iowa. I believe we have a great staff in place to help accomplish that goal. Albert Grunenwald and his team are dedicated to serving our organization in the best possible way. The Board of Trustees is made up of highly motivated individuals that believe in moving the foundation forward. I would like to publicly thank Mitch Baum for leading this organization as board president throughout this past year.

I want to take this opportunity to thank all of the individuals and organizations that provided financial support this past year. Your generous contributions are very much appreciated. Thank you to volunteers and supporters who provided their time, talents and treasures to ensure we "Make the best better" for Iowa 4-H.

Please come alongside me, as well as the staff of trustees of the Iowa 4-H Foundation, as we continue to fund opportunities for Iowa's 4-H Youth.

If you have any questions or suggestions on how we can better serve our most valuable resource in Iowa - our 4-H youth - please feel free to contact me at any time.

Sincerely,

Bob Butcher
1855 Eagle Ave
Holstein, IA 51025
rlb4isu@iastate.edu
712-830-7372

4-H members raise over \$25,000 for Iowa 4-H

By: Carter Collins



The annual Iowa 4-H'ers for 4-H campaign was a success once again thanks to Iowa 4-H'ers all across the state. At the direction of the 2013-2014 State 4-H Council, 354 4-H clubs representing 81 Iowa counties participated and raised \$25,642.70 to support Iowa 4-H youth programs and activities.

The Iowa 4-H'ers for 4-H campaign is in its 29th year, making it the longest-running and largest fundraising campaign conducted by Iowa 4-H members for Iowa 4-H members. The campaign funds the annual operations of the State 4-H Council, which plans and conducts the State 4-H Youth Conference each year. The 2013-2014 State 4-H Council also designated campaign funds to help construct the tornado safe room at the Iowa 4-H Center, underwrite some of the costs to hold the Iowa 4-H Youth Conference and provide financial assistance to help 4-H families with state program fees and 4-H camp fees at the Iowa 4-H Center.

"This year's State Council should be very proud of their accomplishments in this year's campaign," said Albert Grunenwald,

Executive Director. "Twelve 4-H counties that had not participated in last year's campaign donated in this year's 4-H'ers for 4-H campaign, which led to 81 counties participating and this year's overall success."

Awards were presented for Top County Per Member, Most Improved County Giving and Top County at the 2014 State 4-H Conference.

The Top Per Member Awards were presented to counties that raised the most dollars per 4-H club member. This year's first place award went to Wright County which set a new campaign record of \$8.54 per member. Second place went to Webster County, which raised a total of \$5.10 per member, and third place went to Worth County with \$4.70 per member.

The Most Improved Giving County Awards were given to counties that increased their contributions by the highest percentage over the previous year. In first place was Warren County with 255 percent, Iowa County with 224 percent for second, and Montgomery County in third with a 216 percent increase.

The Top County Awards were presented to the counties that raised the most dollars and Johnson County received first place for the second year in a row by raising \$1,464.50. Wright County came in second with \$1,408.62 and third place went to Webster County, which raised \$1,230.74 for the 2014 campaign.

The 2014-2015 State 4-H Council has begun planning for the 2015 4-H'ers for 4-H campaign. In celebration of the campaign's 30th anniversary, a fundraising goal of \$30,030.30 has been set. The campaign will run from March 1, 2015, to June 1, 2015, and will be asking 4-H clubs to donate a minimum of \$3.00 per member to help reach the goal. 🍀

More information about the 4-H'ers for 4-H campaign can be found on our website at www.iowa4hfoundation.org/4hersfor4h.

Calendar of Events

DATE	EVENT	LOCATION
December 2, 2014	Giving Tuesday	Nationwide!
February 1, 2015	4-H Scholarship Applications Due	
February 1, 2015	Loren Kruse/ <i>Successful Farming</i> Outstanding 4-H Volunteer Award Nomination Due	
February 28, 2015	6th Annual Iowa 4-H Foundation Gala	The Marriott, Cedar Rapids, Iowa
March 1-May 15, 2015	4-H'ers for 4-H Campaign	Statewide

Partnering Up for Iowa's 4-H Youth

Barb Determan's Leadership Formula for Success

By: Sue Peyton, Iowa 4-H Foundation Trustee

"The team approach works great because we build on each other's strengths."

—Barb Determan, Early Achievers 4-H Club leader, Sac County



Left: Barb Determan, 4-H volunteer from Sac County, IA. Right: Barb Determan received the Loren Kruse/Successful Farming Outstanding 4-H Volunteer Award at the 2014 State 4-H Youth Conference Banquet.

Partnerships matter.

That's a common theme for Sac County's Early Achievers 4-H Club leader, Barb Determan, who is an avid alumnus, parent, volunteer and supporter of 4-H. She was a 10-year 4-H member and lived in the 4-H House at the University of Illinois during her college years. As the first generation in her family to attend college, Barb especially appreciated all the friends and connections she already had through 4-H when she moved from a rural farm to a large university campus.

What led the young, ambitious Barb Campbell to Iowa was marrying Early, Iowa farmer Steve Determan. The newlyweds settled in rural Sac County, and shortly thereafter, Barb called the local ISU Extension and Outreach office and asked how she could volunteer. That simple step launched her career as an Iowa 4-H volunteer, a role that has continued for 33 years.

Barb believes that 4-H provides the opportunity for youth to belong and to make a difference. It brings other nurturing adults into their lives to help support their learning and development. The youth-adult

partnerships that are central to youth development help make 4-H special for Determan. "4-H is so accepting of all youth and adults; encouraging them and helping them to learn, grow and stretch in areas they have not even thought of before," she explained. "4-H is unique in exposing youth to more ideas and opportunities, while letting them direct the paths that learning will take."

Although Barb's husband, Steve, did not have a 4-H background, it didn't take him long to become part of the team. Today, they have shared responsibilities as 4-H leaders for 30 years. Barb's philosophy is that the more adults who share their talents and skills through 4-H, the better the opportunities will be for the youth to learn, grow and find their own passions for the future. This is why the Early Achievers have a team of adult leaders. "The team approach works great because we build on each other's strengths," said Barb. The team of leaders, including Barb and Steve, meet face to face only twice a year, but they stay in touch continuously through email, according to Determan. The round robin emails help keep everyone focused on

projects and purposes. "It is so important for the adults to help validate the ideas that our youth have, to stay involved and to help them identify ways to make those ideas work," said Barb.

Determan credits partnerships with other leaders and parents as a key component for a thriving 4-H club. She was fortunate to see that team leadership approach in her own 4-H experience. Then, when she started volunteering with the 4-H club in Early, she became part of a team that worked together to provide the best experiences they could for their members. "The Early Achievers have always had strong partnerships with past and present leaders, parents and other adults in the community," said Barb.

Partnering with the community is another core concept for Barb's 4-H leadership model. Like many other thriving groups, the Early Achievers 4-H Club is deeply involved in community service projects, such as planting flowers, making and delivering Christmas gift bags, coordinating a community Easter egg hunt, volunteering for tornado clean-up

"4-H fosters a special connection among people that results in sharing, empathy, and support when it is needed."

—Barb Determan, Early Achievers 4-H Club leader, Sac County

efforts, filling packages for soldiers from the area, and many more. However, their signature partnership is co-ordination with the Sac County Relay for Life. Barb said that their 4-H'ers work hard to help organize a successful event and they raise over \$1,000 every year for the project.

Determan also emphasizes the importance of partnerships with donors and sponsors who provide monetary support for 4-H club projects, member support to participate in conferences and events beyond the county, and scholarships for post high school education. "Our club has received one of the DuPont Pioneer Seed Grants almost every year they have been available and they have made it possible for us to improve our community in a myriad of ways," Barb

explained. "Without donor support through the Iowa 4-H Foundation, many families could not afford the opportunities that 4-H youth have to participate in camping, conferences and other events at county, state and national levels." For several years, Barb's 4-H club has baked homemade cookies for participants in the Iowa 4-H Foundation's northwest Iowa golf tournament as a way to show their appreciation for this partnership with donors and supporters.

On June 25th, Barb was named the 2014 recipient of the Loren Kruse/Successful Farming Outstanding 4-H Leader award through the Iowa 4-H Foundation for her dedication and service as a 4-H club leader. Determan said she was especially humbled when she received the award because the

nomination originated with a 4-H alumnus from her club. Her plans for the monetary award and an additional personal donation reflect the partnership theme: her club will benefit from funding for citizenship projects; the county will benefit from funding for member support; and the state will benefit as Barb and her family establish a scholarship to help future 4-H alumni continue their education.

Barb and Steve Determan have helped nurture a 4-H environment that has enriched their family and their community. "4-H fosters a special connection among people that results in sharing, empathy, and support when it is needed," Barb added.

Clearly, partnership matters. 🍀

Brandt Estate Gift: Inspired to Make the Best Better

By: Brooke Young



Sylvia Brandt, a former Iowa 4-H'er, lived the 4-H motto, "To make the best better," throughout her successful career in the insurance industry. Sylvia did just that with a bequest to the Iowa 4-H Foundation.

Sylvia was likely inspired by her 4-H club leader, Marie Schlapkohl, to leave a better legacy for Iowa 4-H. Marie lived on a farm in rural Scott County with her two brothers. 4-H was so important to the Schlapkohl family that their estate was bestowed to the Iowa 4-H Foundation upon Marie's death. The Schlapkohl Endowment was established to provide for facility improvements at the Iowa 4-H Center, and annual income generated from the rent of the Schlapkohl's farmland continues to benefit Iowa 4-H'ers today. The Schlapkohl legacy gift to 4-H is likely to have been the inspiration for Sylvia's own gift.

Sylvia always thought beyond herself and left bequests to three organizations that she said made a significant impact in her life, one being the Iowa 4-H Foundation. Sylvia really believed in 4-H and wrote for her obituary, "She was active in the Scott County 4-H girls program in the earlier years and a former 4-H leader of the Blue Grass Sunshine Workers Jr. Girls Club."

Following her death in 2005, the Iowa 4-H Foundation learned of Sylvia's legacy gift to 4-H – a bequest of nearly \$150,000. The bequest to 4-H from the Sylvia Brandt Trust was the largest individual gift to the Iowa 4-H Foundation in 2005. In her generosity, Sylvia showed that she is relying on 4-H to use her gift to continue to make the best better.

Sylvia's gift made it possible for the Iowa 4-H Foundation to expand its statewide support to 4-H programs and marketing initiatives. New opportunities like the "Stitch This" and "Cook This" competitions at the Iowa State Fair came about from Sylvia's investment in the Iowa 4-H Foundation. Funds were also used to promote 4-H club growth, member recruitment and recognition opportunities for Iowa 4-H'ers.

Earlier this year, the Iowa 4-H Foundation was surprised again when it received a final distribution from Sylvia's estate.

Legacy gifts like Sylvia's create the capacity for the Iowa 4-H Foundation to truly make 4-H better for today's youth. 🍀

For more information about planned giving and leaving your legacy to 4-H, contact Albert Grunenwald at 515-294-4780 or abgrunen@iastate.edu

Iowa 4-H Hall of Fame Inductees Honored

By: Carter Collins



Left: Albert Grunenwald, Executive Director, with Loren Kruse, Iowa 4-H Hall of Fame State Inductee. Right: Albert Grunenwald, Executive Director, with Jerry Parsons, Iowa 4-H Hall of Fame State Inductee

program. Many inductees served as club leaders, youth mentors, fair superintendents, fair board members, Iowa State University Extension and Outreach county council members, county youth council members, fair judges, financial supporters, chaperones, Iowa 4-H Foundation trustees or ISU Extension and Outreach staff members. The inductees have demonstrated dedication, encouragement, commitment and guidance to Iowa's 4-H'ers throughout their lifetimes.

Inductees or their surviving family members were presented with a certificate by the Iowa 4-H Foundation as they were introduced on stage during an induction ceremony at the Iowa State Fair. A reception, sponsored by donors to the Iowa 4-H Foundation, was held after each Iowa 4-H Hall of Fame presentation.

"This is a wonderful opportunity for county and state 4-H volunteers and staff to be recognized and celebrated for their outstanding service and dedication to Iowa's 4-H youth program," said Albert Grunenwald, Executive Director of the Iowa 4-H Foundation.

For more information about the Iowa 4-H Hall of Fame including an archive of all inductees, visit www.iowa4hfoundation.org/hof. The Iowa 4-H Hall of Fame was established in 2002 during the national commemoration of the 4-H Centennial. 🌿

The success of the 4-H program in Iowa is made possible by individuals and couples who go well beyond the call of duty to serve Iowa's 4-H youth. The Iowa 4-H Hall of Fame recognizes these outstanding volunteers and their contributions to Iowa 4-H. Eighty-two counties and two state-level Iowa 4-H volunteers were inducted into this year's Iowa 4-H Hall of Fame.

Inductees are selected by their county for their exceptional work in contributing to the lives of 4-H members and the overall 4-H

Congratulations to the 2014 Iowa 4-H Hall of Fame Inductees!

Adair County – Deb Stalter
 Adams County – James (Jim) Stalcup
 Allamakee County – Betty Toendle
 Appanoose County – Jerald & Judi Lawson
 Audubon County – Ed Ahrendsen
 Benton County – Greg Svoboda
 Black Hawk County – Louis & Pat Beck
 Boone County – Jim Magee
 Bremer County – Kevin & Peney Rasing
 Buchanan County – Rustie & Lori Kane
 Buena Vista County – Marty Olsen
 Butler County – Doug Schueler
 Calhoun County – Jamie Buenting*
 Carroll County – Julie Clancy
 Cass County – Eleanor Hoover
 Cedar County – Teri Baird
 Cherokee County – Jim & Peggy Corrington
 Chickasaw County – Ron Zelle
 Clarke County – Joyce Branson
 Clay County – Roger & Kay Zieman
 Clayton County – Sandy Ruckhaber
 Clinton County – Marvel Smith
 Crawford County – Dick & Rona Bromert
 Dallas County – Chuck & Lorinda Inman
 Delaware County – Martin & Joann Kruse
 Des Moines County – Andy & Lyn Brader
 Dubuque County – Betty Pins
 Emmet County – David & Carol Solberg
 Fayette County – Don Bahe

Floyd County – Joe & Sue Paulus
 Franklin County – Dr. Richard Flickinger*
 Fremont County – Phillip Wing
 Greene County – Doug Hawn
 Grundy County – Bill Noteboom
 Guthrie County – Jim & Jo Laughery
 Hamilton County – Pam Henderson
 Hancock County – LaVern* & Della *Veau
 Hardin County – Jackie Tibbs
 Harrison County – Paul Lane
 Henry County – Deborah Sinclair
 Howard County – Lowell & Marge Dohlman
 Humboldt County – Marilyn Hundertmark
 Ida County – Dale & Sandy Ullrich
 Iowa County – Theresa Heitman
 Jackson County – Larry & Mary Lou Johnson
 Jefferson County – Eileen Pickard
 Johnson County – Richard & Joyce Oberman
 Jones County – John Harms
 Keokuk County – Terry & Marsha Steinhart
 Linn County – Marilyn Butler
 Louisa County – Mike Hendrickson
 Mahaska County – Eileen Blom
 Marshall County – Tom Hemesath
 Mills County – Robert Moore
 Mitchell County – Marlene Weis
 Monona County – Dave Hausman
 Monroe County – Dean & Nathalie Lathrop
 Montgomery County – Wanda Johnson

Muscatine County – Irene Lary
 Page County – Harold & Shirley Anderson
 Palo Alto County – Roberta Hersom
 Plymouth County – Carol Schneider
 Pocahontas County – Nancy Jenson
 Polk County – James & Judy Nelson
 Pottawattamie (East) County – Boyd M. Nilan*
 Poweshiek County – Larry Sears
 Ringgold County – Cindy Schlapia & Cheryl Whittington
 Scott County – Jeanette Korthaus
 Shelby County – Linda Heflin
 Sioux County – Cheryl Palsma
 Story County – Doris Olson
 Union County – Paul* & Verna Bailey
 Van Buren County – Norma Whitaker
 Wapello County – Sue Wasson
 Warren County – Jason & Kim DeLay
 Washington County – Robert Emde
 Wayne County – Jan Winslow
 Webster County – John & Sandee Bonner
 Winneshiek County – Norbert Lovstuen
 Woodbury County – Maggie Locke
 Worth County – Paul Ferley
 Wright County – Dale Haugland
 State Recognition – Loren Kruse
 State Recognition – Jerry Parsons 🌿

*Posthumous Award

Give the Gift of 4-H

By: Albert Grunenwald

If the 4-H experience was valuable to you as a young person, then it will likely be valuable to a young person today. With one out of five K-12 youth participating in Iowa 4-H programs, there is still great opportunity to reach youth who can benefit from the lifelong knowledge and skills that 4-H offers.

I pledge my...

HEAD *to clearer thinking*

HEART *to greater loyalty*

HANDS *to larger service*

HEALTH *to better living*

This holiday season, give the gift of 4-H.
Donate today!

IOWA 4-H FOUNDATION
FUNDING OPPORTUNITIES FOR IOWA'S YOUTH

www.iowa4hfoundation.org/donate

At \$30 per year, 4-H is still a great bargain compared to other school, athletic and youth activities. Even so, program fees and project material costs can pose a financial barrier for young people to participate. This year, as you think about charitable causes to support, consider giving the gift of 4-H and opening the doors of opportunity for Iowa's most valuable resource – our children who are our future.

Sponsoring a future Iowa 4-H member is easy! Just take \$30 times the number of 4-H'ers you would like to sponsor in 2015. Write "Program Fee Assistance" on your check memo or in the instruction box when making an online gift. Let's make sure that everyone who wants to be in 4-H can have that opportunity! 🌿

Detach and mail to:

Iowa 4-H Foundation • Extension 4-H Youth Building • ISU
 Ames, Iowa 50011-3630



Donate Now! YES, I want to help the Iowa 4-H Foundation "Make the Best Better" for Iowa 4-H Youth

Name _____

Address _____

City _____ State _____ Zip _____

Phone _____

Email _____

Payment: Check (enclosed) Visa MasterCard Discover

Name on Card _____

Card Number _____

Expiration Date _____ / _____

I wish to give an/a: Outright Gift of \$ _____

Pledge of \$ _____ annually for _____ years.

Donor Signature _____ **Date** _____
I understand: This agreement is made in good faith but is not legally binding upon either myself or my estate. This gift is tax deductible as a charitable contribution. The Iowa 4-H Foundation will send a reminder notice annually until my pledge is completed.

Tribute/Memorial

in memory of: _____

in honor of: _____

For the occasion of _____

Honoree's Residence: City _____ State _____

Send acknowledgement to _____

Address of acknowledgement _____

City _____ State _____ Zip _____

4-H Memorials

This list represents memorials given from May 1, 2014 through September 30, 2014. (Listing may not include gifts given directly to the ISU Foundation for 4-H). To make a memorial gift, donate online at www.iowa4hfoundation.org/donate or mail donations to: Iowa 4-H Foundation, Extension 4-H Youth Building, ISU, Ames, IA 50011-3630

- | | | | |
|--|--|--|--|
| <p>Jim Almquist
Anne Almquist
Janice and Robert Anderson
Gwyneth and Ed Augustine
Evelyn and Glenn Beavers
Irene Beavers
Melva Berkland
Pamela and John Blake
Sue and Bill Bogue
Janet and Richard Brimeyer
Cynthia and Michael Buck
LaRue Clark
Coryene and Willard Classen
Karen and Robert Cole
Debra Cook
Ester and Gary Cox
Dorothy and John Creswell
Bob Crom
Mary Dick
Marjorie Fenton
Marilyn and William Gift
Doris and Donald Goering
Lynn and Karl Griffith
Lorraine Habben
Ann and Robert Harrison
Florence Hoffmann
Linda and Richard Hoffmann
Pat and Roy Hougen
Lois Hunt
Ona and Roger Iverson
Jean Lem Rev Trust
Sharon and Dean Johnson
Lisa and Tom Johnson
D. Eileen and Gerald E. Klonglan
Betty and Bill Linstrom
Mary Ann and Paul Lundy
Carolyn and Ralph Manning
Sharon and D. Marek
Ann McMullin
Mary Jo and Glen Mente
Mary and Chuck Morris
Betty and Joe Narigon
Kathy and Bob Nervig
Joann and Gene Neven
Bonnie and David Orth
Janet and Steven Padgitt
Diane and Gerald Parsons
Cindy and Jim Pease
Jean Peterson
Sue and Harold Peyton
Myrna and Ronald Powers
Sherri and Stephen Ruzek
Ann and Ron Sanson
April and Greg Scott
Carol and Monte Sesker
Janet and William Short
Shirley Stakey
Shirley and Darrell Sunderman
Barbara and David Tillinghast
Judy and Raymond Timan
Bonnie and Larry Trede
Mr. William Zmolek</p> <p>Mrs. Arora
Jean and David Saveraid</p> <p>Milton Bauer
Nancy and Jack Burright</p> <p>Brad Berns
Linda and Joe Zuercher</p> | <p>Emil Bielfeldt
Jeffrey Henningsen</p> <p>Vernette Bielfeldt
Jeffrey Henningsen</p> <p>Valree M. Blewett-Dickson
Jim and Linda Anderson
Jamie and Donald Blomgren
Donna and John Conaway
Kay and Roscoe Eggers
Karen and Alan Hermanson
Cathy Hockaday
Judy Holst
Dave Lowman
Linda and Jerry Moore
Linda and Randy Naeve
Carol and Jon Nelson
Arlis and Arlie Penner
Rosanne and Rick Ringgenberg
Annette and Jim Sexton
Natalie and Duane Short
Terry Smothers
Julie and Darrell Staley
Marcia and Hap Steed
LouAnn and Dennis Vulgamott
Mary Kay and Paul Wilkins</p> <p>Doug Blomgren
Colleen and Rich Wrage</p> <p>Julienne Blomgren
Jean and David Saveraid</p> <p>Harold Bohr
Shirley Bohr</p> <p>James Borcherding
Liz Anderson and Loren Kruse</p> <p>Don Cain
Betty and Donald Burzloff
Carol and Donald Cain
Maquoketa State Bank
Mary Jo and Glen Mente
Beverly and Larry Myatt
Katherine and Joel Olson
Myrna and Al Tubbs
Christine and Steve Tubbs
Linda and Dean Wiese</p> <p>Dorothy E. Campney
Ruth and Larry Neppel</p> <p>Portia Cooper
Mary and Franklin Scamman</p> <p>Lucy Crom
LaRue Clark
Penny Crom and Christopher Mroz
Carole and Roger Custer
Jane Lohnes
Patricia and James Miller
Diane and Gerald Parsons
Mr. William Zmolek</p> <p>Janelle Crotty
Merry and Mike Crotty</p> <p>Joan Cullen
Marilyn and Roger Leerar</p> <p>Frances Daufeldt
Irene Lary</p> <p>Lumir Dostal
Jennifer Howell</p> <p>Sara Dostal
Jennifer Howell</p> | <p>Scott Eberling
Linda and Joe Zuercher</p> <p>Brooke Engstrand
Vicki and Eddie Engstrand</p> <p>Agnes Flugum
Helen Schuck</p> <p>Ruby Foels
Clayton County Holstein
Breeders Association
Leslie A. and Trent Henkes
Lands-Brook Farms</p> <p>Travis Francis
Denise and James Wasko</p> <p>Elaine Ganfield
Nancy and Jack Burright</p> <p>Rita Glime
David K. Glime</p> <p>Bob Henningsen
Janice Henningsen
Jeffrey Henningsen</p> <p>Jay T. Hessman
Verlie and Everett Amis</p> <p>Garvis Houck
Belva and Gary Payton</p> <p>Max Hummel
Helen and Martin Applegate
Kathy and Doug Applegate
Jacquelyn and Donald Baker
Beverly and Bobby Beckendorf
Marianne and Martin Dolphens
Marilyn and Willard Fritz
Loree Hamilton
Lorraine Henry
Wanda and Terrance Hummel
JoAnn and Dick Kates
Barbara and Donald Killion
Dixie and John King
L & L Farms
Joanne and Anton Mueller
Barbara and Keith Olsen
Sandra and Leslie Regier
Janiece Schroder
Joan and Richard Shanno
Lauretta and Matthew Simon
Carolyn and Donald Srajer
Beverly and Byron Winans
Dorothy and Doyle Wolverton</p> <p>Joni Jacobsen
Boy Scout Troop 208
Nancy and Jack Burright
Lujean Faber
Gene Austry Rodeo Club
LouAnn and Steven Hass
Rebeca Irby
Diane and Bob Jones
Marta and Donald Nelson
Lou and Ken Roach
Mary Pat and Allen Widrowicz</p> <p>Gordon Jacobson
Julie and Neil Lansing</p> <p>Dorothea & Ralph Kay
Deborah and David Randon</p> <p>Edith F. Kerr
Helen Scully</p> | <p>Marshall King
Annette and David Brown
Ann and John Kalsem
Colleen and Rich Wrag</p> <p>Francis L. Kirsch
Vickie and James Sieger</p> <p>Irene & Kenneth Kramer
JoAnn and Jerry R. Kramer</p> <p>Bill Kuecker
Florine and Ron Swanson</p> <p>Carolyn Lund
Nancy and Doug Jensen</p> <p>Oneta Lyons
Roberta and Louis Jurgersen</p> <p>Chase Martin
Lois and Loyd Martin</p> <p>Tom Maxwell
Marylu and David Watkins</p> <p>Joy Mc Killip
Irene Lary</p> <p>Monica McGregor
Victoria and James Riley</p> <p>Michael James McKenna
Kelly and Bryan Barry
Kori and Robert Boyd
Andrew Fullenkamp
Megan and Barrett Klaas
Julie and Chris McElroy</p> <p>Elsie Mehl
Irene and Dutch Leonard
Eileen and Dean Stoullil</p> <p>Leona Melhus
Florine and Ron Swanson</p> <p>Kenneth Mente
Mary Jo and Glen Mente</p> <p>Erma C. Meyer
Nora and Larry Birt
Marilyn and Dwight Carlson
Arla and Milt Dahlene
Diane Jones
Janice and Henry Krohn
Rose Mary and Steven Lohff
Sandy and Wally Lott
Carla and Leroy Meyer
Sandra and Loren Wuebker</p> <p>Donald Mino
Debbie Nece</p> <p>Pat Mino
Debbie Nece</p> <p>Margenelle Moeller
Leslie A. and Trent Henkes</p> <p>Velda Morris
Meredith McHone-Pierce & Dennis Pierce</p> <p>Alice Van Wert-Murray
Sharon and Chuck Akers
Anonymous
Linda and Del Berghoefer
Kathryn Brandt
Janet Brown
Graham Trailers
Carolyn Harrington
Jan and Berry Johnson
Yoshiko and Erwin Johnson</p> |
|--|--|--|--|

- Jane and Rick Juchems
Mary Jo and Glen Mente
Patricia and Leslie Patten
Shirley Stakey
Beth Stuck
Catherine Van Wert and Timothy Menard
Sarah Van Wert
William B Dohrmann Revocable Trust
- Bernie Neppel**
Ruth and Larry Neppel
- Betty Newman**
Julie and David Nelson
- Joy Niklasen**
Marilyn and Roger Leerar
Shirley Stakey
Becky and Dan Tompkins
- Clayton Novak**
Carol and Richard Hoke
Ann and Kirk Weih
- Colton Novak**
Carol and Richard Hoke
Ann and Kirk Weih
- LaVern R. Otte**
Lynn and Dennis Meier
- Virginia Ouder Kirk**
Belva and Gary Payton
- Virginia Pate**
Larry Landsgard
Brian Pate
- Ron Payton**
Belva and Gary Payton
- Marian Petersen**
Deborah and David Randon
- Sharon Petersen**
Marie McLaughlin
- William F. Petersen**
Deborah and David Randon
- Merle Wayne Peterson**
Kris Kuhlmann and Rick Dobesh
- Rick Ratzke**
Florine and Ron Swanson
- Vera Reves**
Meredith McHone-Pierce & Dennis Pierce
- David Rochleau**
Suzanne H. and Joseph F. Shirbroun
- Dean Rodgers**
State Farm Companies Fnd.
- Joyce Saffly**
Jean and David Saveraid
- Susan Schaaaf**
Mr. Schaaaf
- Mike Scheuermann**
Brenda and Kent Frankenfeld
Angela and Scott Kruse
Kris Kuhlmann and Rick Dobesh
Mary Jo and Glen Mente
Van Horn, Inc.
- Harlan Schlueter**
Larry Landsgard
Linda and Joe Zuercher
- Loretta Schmidt**
Florine and Ron Swanson
- Gerald Schmitt**
Diane and Dennis Nelsen
- Diane Scott**
Deborah and David Randon
- Drew Scott**
Darlyne and Robert Brower
Amy and Matthew Kuester
Janet and Lee Scott
- Bertha Shaw**
Carolyn and Wilbur Coe
Mary and Roger Dreeszen
Lorraine Habben
Carol and Gerald Hunter
Marilyn and Roger Leerar
Barbara and Keith Sexton
Shirley Stakey
Florine and Ron Swanson
Mary TeWinkel
- Arlin Sheldahl**
Karen and Larry Anderson
Ann and John Kalsem
Carolyn and Ralph Manning
Kathy and Bob Nervig
- Ralph Shivers**
Verna and J. Bowie
Doris and Gaylen Heaberlin
Deborah and Gary Horn
JoAnn Lumley
Shirley McClelland
Ann and Brian Osgood
Carol and Leroy Pommrehn
Carol and Neal Shivers
Gary Shivers
- Harriet & Robert Smith**
Anonymous
- Delores Smotherman**
Kathy and Bob Nervig
- Paddy Solberg**
Melva Berkland
- Doris Stadlman**
Mary and Chuck Morris
- Betty Stone**
Innovators 4-H Club
- Ralph Telsrow**
Deborah and David Randon
- Ronald Till**
Cindy and Vernon Poll
- Eva Vander Linden**
Lynn and Dennis Meier
- Don Voelker**
Melva Berkland
Darlys and Ron Orth
- Janice Walker**
Heather and Rick Beam
Catherine and Lawrence Bedenbender
Suzanne and Christopher Bolton
Dixie and Leroy Brookhart
Teresa and Tom Carter
John L. Hintermeister Trust Account
Irene Lary
N.P.K.K. Pork, LLC.
O'Donnell Ace Hardware, Inc.
Mary Lou and Lewis Peterson
Kim and Brian Seligman
Gregory Temple
Cheryl and Craig Townsley
Emily and Noel Townsley
- Leonette Wessels**
Judith and Gary Burrack
- Grant Wolf**
Marlys Moore
- Agnes & Earl Youngblut**
Larry and Eugenie Loenser
- Jean Zmolek**
Mary de Baca



Saturday, February 28, 2015
The Marriott
1200 Collins Rd NE, Cedar Rapids

Dinner Buffet • Decadent Desserts
Unique Auction Items • Support Iowa 4-H
Celebrate with 4-H Alumni & Friends

Individual: \$100 • Couple: \$150
Special Price for 4-H Alumni (ages 21-30) & Staff: \$50



For more information visit us online at
www.iowa4hfoundation.org/gala

Join the
Iowa 4-H Foundation
for their signature
fundraising event in
eastern Iowa! In 2014,
over \$107,000 was raised
to support Iowa 4-H
opportunities
statewide.

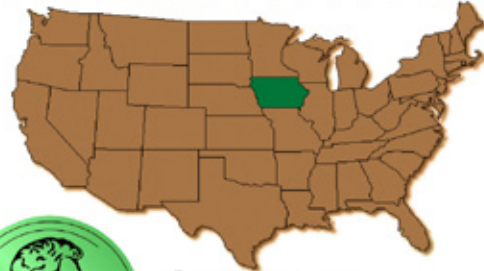


2014 Annual Report

501 (c)(3) non-profit...

810 New Donors
Special Events Raised \$194,111.

88% of Donors Live in Iowa.



Average Individual Gift: \$272.

Over 4,400 Vounteer Hours



The Iowa 4-H Foundation provides financial resources for youth development through 4-H.

Iowa 4-H Center Improvements: \$145,500.
Aid for 263 4-H Youth: \$12,385.

\$65,750 in Scholarships awarded to 71 4-H'ers.



Over \$3.6 million in 79 4-H County Endowments.

19 Delegates & 2 Adults to National 4-H Congress: \$17,507.



Making the Best Better for Iowa's 4-H Youth.

2013 - 2014 Fiscal Year in Review

A Letter from the Executive Director



This past fiscal year felt like a rollercoaster ride - a mix of great thrills with a few stomach drops. Markets were favorable for our investment portfolio, but investment income also accounted for 38 percent of our annual revenue. Individual giving remained flat and we saw a slight decrease in corporate and organization giving. On the other hand, county endowment fundraising saw an eight percent increase, and the Foundation received two unexpected bequests from estates of Verle & Ellen Hunt and Sylvia A. Brandt. At the end of the ride, we came out better than the year before while making significant investments in the Iowa 4-H Center as well, as our scholarship and recognition programs. Thank you for helping us make it better for Iowa 4-H'ers. Seeing their accomplishments is definitely worth the ride!

- Albert M. Grunenwald
 Iowa 4-H Foundation
 Executive Director

Statement of Activities - As of June 30, 2014 and June 30, 2013

Revenue, Gains and Other Support	2014	2013
Contributions	\$1,634,545	\$1,655,867
In-Kind Contributions	\$24,497	\$23,820
Investment Income	\$44,791	\$65,607
Gain on sale of assets	\$1,700	\$3,420
Unrealized Gain on Investments	\$982,891	\$843,519
Total Revenue	\$2,688,424	\$2,592,233
Expenses		
Program Services	\$827,487	\$918,928
Management and General	\$293,590	\$257,326
Fundraising	\$312,970	\$298,005
Total Expenses	\$1,434,047	\$1,474,259
Change in Net Assets	\$1,254,377	\$1,117,974
Net Assets-Beginning of year	\$9,549,780	\$8,431,806
Net Assets-End of year	\$10,804,157	\$9,549,780



Note: These condensed financial statements are not complete and have been derived from the financial statements that were audited by Henkel & Associates, P.C., Certified Public Accountants. The complete financial statements including the auditors' report are available on our website at iowa4hfoundation.org or by contacting us at Iowa 4-H Foundation, Extension 4-H Building, Iowa State University, Ames, IA 50011-3630 or (515) - 294-1537.

New Individual Gifts & Pledges to the Iowa 4-H Foundation

The following donors contributed \$100 or more to support the Iowa 4-H Foundation during the last fiscal year (7/1/13-6/30/14) and are listed in their current club category.

\$100,000+

Mary Jo and Glen Mentel

\$40,000+

Sue and Sparky Duroe
Florine and Ron Swanson
Virginia Heagney and James Tobin

\$20,000+

Adele and Dean Bowden
Doris and Donald Goering
Nancy and Paul Jacobsen
Mary and Chuck Morris
Shirley and Don Nebergall
Valerie and David Pace
Sue and Harold Peyton
Renee Scheuermann
Shirley Stakey
Virginia and Ron Stutsman

\$10,000+

Judy Anton
Connie and Bob Butcher
Barb and Steve Determan

Kris Kuhlmann and Rick Dobesh
Emily and James Doxstad
Ronda and Harry Edwards
Sherry Glenn
Rita and Richard Godfrey
Janet and Pete Hermanson
Judy and Bill Hoeffle
Sherilyn and Mitchell Hoyer
Margery and Paul Jones
Liz Anderson and Loren Kruse
Pam and LaVerne Obrecht
Diane and Jim Patton
Cheryl Pence
Bruce Rastetter
Phyllis and Charlie Ricketts
Sally and Roger Stutsman
Maureen and Terry Tobin
Myrna and Al Tubbs
Dana and Pete Wenstrand
Tom Whitson
Sue and Stephen Wolken

\$4,000+

Donald Adams
Sandi and David Anderson
Sheryl and Everett Asmus

Kristin and Mitch Baum
Pat and Louis Beck
Melva Berkland
Judith and Gary Burrack
Nancy and Jack Burrigh
Betty and Donald Burzloff
Helen and Theodore Clausen
Wanda Cornelius
Sue and Jim Cornick
Helen and Stanley Davidson
Jayne and Eric Dee
LaVon Eblen
Jane and William Edwards
Phyllis and Timothy Fevold
Phil Gauger
Dixie Trout and Dennis Gormley
Ann and Robert Harrison
Shirley Helmrichs
Pat and Roy Hougen
Lois Hunt
June Isaacson
Teri and Paul Kruse
Shannon and John Latham
Marilyn and Roger Mahr
Carolyn and Ralph Manning
Debra Marple

Cathy and Alan McGregor
Bonnie and Gerald Moeller
Doris Moeller
Ruth and Larry Neppel
Joyce and Richard Oberman
Anne Oldham
Sandra and Al Paris
Diane and Jerry Parsons
Meredith McHone-Pierce and Dennis Pierce
Deborah Pullin and Chris Van Auken
Barbara and Tracy Remy
Lou and Ken Roach
Kurt Roberts
Melissa and Jerry Roell
Beverly and Glenn Rowe
Richard Schirrmacher
Betty Schwarck
Barbara and Keith Sexton
Ronald Shay
Sharon and Rich Shuler
Kendell J. Swanson
Kristi and Bill Tomlinson
Janel and Kirk Tyler
Kathryn and Mel Weatherwax
Lola and Thomas Zimmerman

\$2,000+

Brenda Allen
Lynda and Jim Alvarez
Karen and David Anderson
Jacque Andrew
Marlene Armbrrecht
Carla Newberry and Brian Asmus
Susan and Mark Beedle
Delorus and Robert Bockwoldt
Verneil and Donald Branstad
Annette and David Brown
Raymond Butt
Phyllis Caldwell
Cindy and Allan Childs
Dorothy and Frank Clark
Dee and James Colwell
Merry and Mike Crotty
Mary Lou Dale
Mary de Baca
Sally and Andy Determan
Ruth and John Deutmeyer
Arlene and Fred DeVries
Cecilia and Wes Ehrecke
Julienne and Richard Ferry
Dianne Fish
Brenda and Kent Frankenfeld

Kersten and Terry Gebard
David Hammond
Karen and Alan Hermanson
Valerie and Don King
Marcia Klindt
James Leuenberger
Jeffery Macomber
Arlene Madill
Jim Madsen
Carol and Loren Mahr
Vernelle and George Malven
Laura and Eric Marzen
Janice and Richard Mason
Julie and Pat McGonegle
Dick Meade
Barbara and Lee Miller
Judy and James Nelson
Sheri and Tom Nicholson
Kate and Kenneth Ogren
Barbara and Charles Oldham
Harlen Persinger
Mary Esther and Ronald Pullin
Beth Raymond
Janice and Joseph Reutter
Barbette and Dean Riemenschneider
Robin and Gary Sampson
Carol and Dale Schlueter
Geraldyn and Fred Sick
Kathy and Ellis Smith
Teresa and Michael Stewart
Jill and James Stutsman
Karen and Larry Taylor
Sandra Teggatz
Cynthia Thorland and Frederick Weitz
Carolyn and Gary Van Gelder
Molly and Robert Vincent
Alice Walter
Valerie and Dick Watkins
Allison and Bryan Whaley
Carol and Gerald Wheelock
Randy Willers
Wendy Wintersteen
Michelle Wright
Carol Zeigler

\$1,000+

Iolene and Ober Anderson
Nancy Anton-Jensen and Brice Jensen
Curtis Bakker
Irene Beavers
Marilyn Benson
Marlys Berry
Suzanne and Rob Bohnsack
Barbara Brooks
Jodee Bruce
Linda and Bill Bywater
Elyse and Paul Carstensen
Lil and Lindy Chrisinger
Linda and Darrel Cline
Christy and Edward Drake
Larry DuVal
Glenda and Don Eggerling

Judith and Wayne Eilers
Cathy and Cornell Gethmann
Loween J. and Doug Getter
Brenda and Greg Gill
Mary and Brian Goodell
William and Lisa Gregerson
Brenda and Albert Grunenwald
Carole and Clarence Hammill
Shannon Harris
Elizabeth and Randall Hertz
Evelyn Herzberg
Susan and Byron Hill
Anne and Maynard Hogberg
Eddie Huck
Nancy and Doug Jenson
Juli and Travis Johnson
Nicole and Steven Jonas
Cheryl and David Kalsem
D. Eileen and Gerald E. Klonglan
Grace Kunz
Jeanette Larson
Janet LaRue
Pauletti and Paul Lasley
Kathy and John Lawrence
Vernene and Gary Lenz
Alice Lichty
Carol and Dudley McDowell
Ann McMullin
Twyla Miller
Dennis Morgan
Arlan and Ruth Moss
Jaime and Mike Naig
Andrea and Curtis Nelson
Marcel O'Connell
Belva and Gary Payton
Stacey and Mike Pellett
Deborah and David Randon
Barbara and L. Kirby Range
Rae and Peter Reilly
Lewis Reyman
Barbara and Dale Ryon
Kay Sacquitne
Anne and Jason Safty
Jane and Leo Schuttler
Peggy and Neil Schwake
Sharon and Roger Selley
Judy Tonderum
Claire Vance
Mary Ellen and John Wall
Ann and Kirk Weih
Janine and Wayne Whipps
Julie and Charlie Wisecup
Beth and William Wunder
Pam and John Yoder
Linda and Joe Zuercher

\$400+

Marva Abel
Catherine Adams
Richard Ahrens
Kathryn and Charles Bailey
Luanne and Lee Barber
Sharon and Rich Bender
Sandy and Gary Bland
Carolyn and James Bollman
Jim Bowersox
Lois Church

Mary and Steve Clagett
Holly and Randy Cooper
Marian and Delbert Davenport
Nancy Dietz and Stephen Harris
Phyllis and Kevin Dittmer
Julie and Alan Edmondson
Connie Ellis
Sue and Larry Emmert
William Englert
Jessie Evans
Listy and Robert Forbes
Betsy and Robert Freese
Barbara Freyenberger
Bonnie and Arnold Gaarde
A. J. Gilbert
Ruby and Don Godfrey
Julia Gordon
Phyllis Green
Shirley and Wayne Gugler
Jeanette Hanson
Ann Marie and Philip Heldorfer
Laurilyn Helmers
Palmer and Sheryl Holden
Jeff Johnson
Tom Kauffman
Kathryn and John Kibbie
Sid Kolterman
Del and Richard Konopka
Ramona and Judd Leland
Jennifer and Kevin Mars
Lois and Loyd Martin
Ramona and Eugene McCaw
Connie and Vernon McClintock
Sherry and Vince McGill
H. Aileen and Wayne McKee
Larry Meacham
Dawn and Thomas Moser
Sharon and Leroy Nelson
Sharyn and Gary Nelson
Richard Petschauer
Kevin Peyton
Bernadene and Arthur Pohn
Joan and Leroy Punt
Donna and VerDon Schmidt
Megan and Steven Schroder
Linda and Harlen Schurr
Karen and Robert Scott
Shirley and Robert Singley
Douglass Soseman
Tara Spidle
Sandra Stille
Susie and O.J. Stoutner
Linda and Tom Stregger
Amy te Plate-Church and Huub te Plate
Jean and Steve Trimble
Joan and Steven Wachtel
Janet and Walter Wendland
Stacy and Andrew Wilson
Amy and Paul Yeager
Amy Young-Lage and Gregory Lage
Polly and Norman Zaugg



Iowa 4-H Scholarships Now Available!

By Brooke Young

College scholarships through the Iowa 4-H Foundation are now available! These scholarships are designed to encourage 4-H members to continue their education beyond high school. Funded by donors through the Iowa 4-H Foundation, scholarship awards range from \$500 to \$3,500. Incoming freshman and current college students are encouraged to apply. Recipients must enroll as full-time students to receive scholarship awards.

"Scholarship applications are open from mid-November through February 1," says Taci Lilienthal, 4-H Scholarship Coordinator. "These scholarships are a great way to reward 4-H members for all of their hard work and dedication to the 4-H program."

Applicants may be eligible for more than one scholarship; however, only one scholarship per individual will be awarded per academic year. Applicants need to only apply once using the online form found at iowa4hfoundation.org/scholarships.

In 2014, 71 scholarships were awarded totaling over \$65,000.

Applications must be submitted online by 11:59 p.m. on February 1, 2015. To apply or to find more information about 4-H scholarships and their requirements, visit iowa4hfoundation.org/scholarships or contact Taci Lilienthal, 4-H Scholarship Coordinator, at taci@iastate.edu or 563-343-1144.

4-H Tributes

This list represents tributes from May 1, 2014, through September 30, 2014. (Listing may not include gifts given directly to the ISU Foundation for 4-H). To honor 4-H members, volunteers, leaders or staff, donate online at www.iowa4hfoundation.org/donate or mail donations to: Iowa 4-H Foundation, Extension 4-H Youth Building, ISU, Ames, IA 50011-3630

<p>4-H Friendship Anne & Maynard Hogberg Mary Jo and Glen Mentel</p> <p>50th Anniversary Ron & Florine Swanson Duane Asbe</p> <p>Birthday Becky Bohde Brianna Janssen</p> <p>Don Goering Kathleen Shaver</p> <p>Shelly Greving Shelly and John Greving</p> <p>100th Birthday C.J. Gauger Brenda and Albert Grunenwald Chad Harris Rose and Jeffrey Pilgrim</p>	<p>90th Birthday Marj Thompson Florine and Ron Swanson</p> <p>80th Birthday Dorothy Hughes Diane and Curtis Claeys</p> <p>Donald E Schroeder Deborah and David Randon</p> <p>Executive Director Albert Grunenwald Kris Kuhlmann and Rick Dobesh Mary and Chuck Morris</p> <p>Henry Co. Hall of Fame Deborah Goering Doris and Donald Goering</p> <p>Honor Dora Jean Gordon Ann and Robert Harrison</p>	<p>Doris Olson Ann and John Kalsem</p> <p>4-H Volunteers Sue and Harold Peyton</p> <p>Daniel & Rachel Clayberg Loween J. and Doug Getter</p> <p>Iowa 4-H Hall of Fame Jerry Parsons Doris and Donald Goering Kris Kuhlmann and Rick Dobesh</p> <p>Mother's Day Joyce Neill Natalie and Craig Oppel</p> <p>Father's Day Ralph Neill Natalie and Craig Oppel</p>	<p>Loren Kruse/Success Farming Outstanding 4-H Leader Award Barb Determan Mary and Chuck Morris Kris Kuhlmann and Rick Dobesh</p> <p>Retirement Loren Kruse Kris Kuhlmann and Rick Dobesh.</p> <p>Judy Levings Mary and Chuck Morris</p> <p>Rebecca Nibe Mary and Chuck Morris</p>
--	---	---	--

Grunenwald Named Executive Director

By: Brooke Young



Albert Grunenwald has been named the Executive Director of the Iowa 4-H Foundation effective September 23, 2014. Grunenwald has more than 19 years of experience with the foundation.

Grunenwald is a former Minnesota 4-H member of ten years where he was active in the leadership, communication and performing arts project areas. He worked for the Redwood County Extension in Minnesota before making the move to Iowa to serve as the Development Assistant of the Iowa 4-H Foundation. He recently served as the Foundation's Chief Operating Officer and Interim Executive Director.

Please join us in congratulating Albert on his new position!

Connect with us!

FACEBOOK:
facebook.com/iowa4hfoundation

TWITTER:
twitter.com/ia4hfoundation

INSTAGRAM:
instagram.com/ia4hfoundation

BLOG:
iowa4h.blogspot.com



Staff and Board Members

Iowa 4-H Foundation Staff:

Albert Grunenwald, Executive Director
Brenda Frankenfeld, Accountant

Brooke Young, Administrative Specialist
Jaleel Khan, Accounting Assistant

Taci Lilienthal, Scholarship Coordinator
Carter Collins, Marketing Intern

Iowa 4-H Board of Trustees:

Mitch Baum, Past President
Bob Butcher, President
John-Paul Chaisson-Cardenas
Doug Den Adel
Andy Determan
Amy Enwright
Holly Grandin
Tina Greiman
Laurie Johns

Eric Johnson
Cathann Kress
Curt Lang
Steven Leath
Eric Marzen
Tom Nicholson, President-Elect
Bill Northey
Kate Olson
Betsy Pearson

Sue Peyton, Vice President
Deb Pullin-Van Auken
Jerry Roell
Rob Rudolphi
Joe Swanson
Michael Tupper, Youth Trustee
Janel Tyler
Kaitlyn Varner, Youth Trustee
Rob Vincent

Thank You!

We greatly appreciate your continuous support of Iowa 4-H.
Thank you! Not pictured: Taci Lilienthal

Thanks for the Memories!

Looking Back at Summer/Fall 2014

National 4-H Week



above left: Woodbury County 4-H'ers;
above center: Mahaska County 4-H'ers;
above right: Allamakee County 4-H'ers

Photo Booth at the Iowa State Fair





Iowa 4-H Foundation
Extension Youth 4-H Building, Ames, IA
Phone (515) 294-1537 * Fax (515) 294-1047
www.iowa4hfoundation.org