



Update on ELA/ELD Instructional Materials Adoption and Launch Events

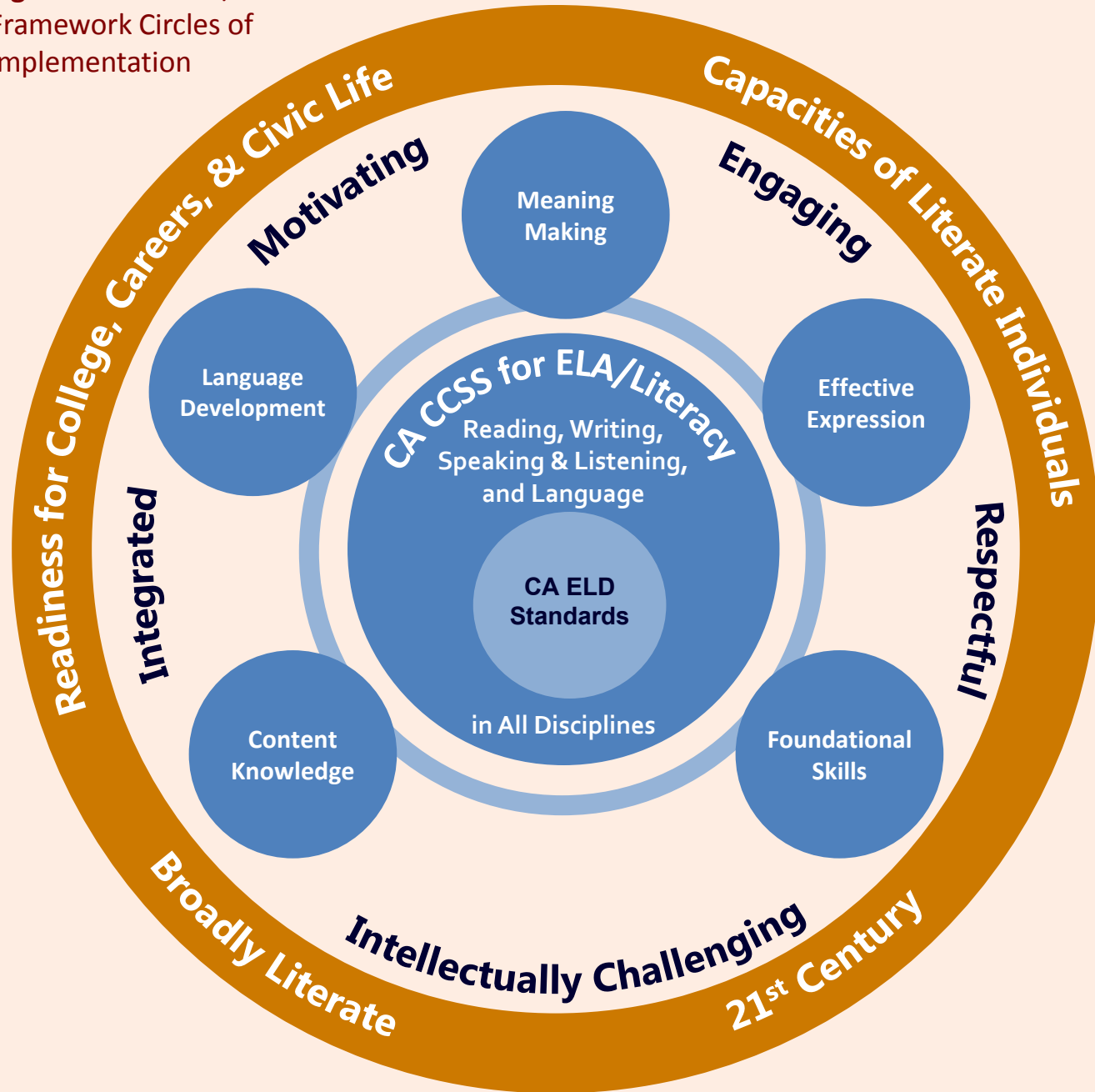
Bilingual Coordinators Network Meeting

Tom Adams
September 17, 2015

Figure 2.1 The ELA/ELD Framework Circles of Implementation



TOM TORLAKSON
State Superintendent
of Public Instruction





TOM TORLAKSON
State Superintendent
of Public Instruction

Chapter 12: Criteria for Evaluating Instructional Materials

- **Program 1:** English Language Arts Basic Program, K–8
- **Program 2:** English Language Arts/English Language Development Basic Program, K–8
- **Program 3:** Biliteracy Language Arts/English Language Development Basic Program, K–8
- **Program 4:** Intensive Intervention Program in English Language Arts, 4–8
- **Program 5:** Specialized Designated English Language Development Program, 4–8



TOM TORLAKSON
State Superintendent
of Public Instruction

Program 1

ELA Basic Program, K–8

Basic grade-level program:

- The comprehensive curriculum in ELA for K–8
- Provides the foundation for instruction
- Intended to ensure that all students master the CA CCSS for ELA (Note: does not fulfill Title III requirement for instructional materials)
- Addresses the needs of students working at or near grade level



TOM TORLAKSON
State Superintendent
of Public Instruction

Reviewer Recommended Materials for Program 1

1. *Amplify ELA: CA Edition, 6–8*
Amplify Education, Inc.
2. *Mirrors & Windows Connecting with Literature, 6–8*
EMC Publishing
3. *Reading Wonders, K–6*
4. *StudySync, 6–8*
McGraw-Hill School Education
5. *CA Pearson System of Courses, K–8*
Pearson Education, Inc., p.a. Scott Foresman and
Prentice Hall
6. *SpringBoard ELA, 6–8*
The College Board–SpringBoard



TOM TORLAKSON
State Superintendent
of Public Instruction

Program 2

ELA/ELD Basic Program, K–8

Basic grade-level program:

- The comprehensive curriculum in ELA for K–8 *with integration of the CA ELD Standards*
- Provides the foundation for instruction
- Intended to ensure that all students master the CA CCSS for ELA **and** the corresponding CA ELD Standards
- Includes materials necessary for designated English language development instruction



TOM TORLAKSON
State Superintendent
of Public Instruction

Reviewer Recommended Materials for Program 2

1. *Amplify ELA: CA Edition and Amplify ELD: CA Edition, 6–8*
Amplify Education, Inc.
2. *Benchmark Advance, K–6*
Benchmark Education
3. *Journeys, K–5*
4. *Journeys-Collections, K–6*
5. *Collections, 6–8*
Houghton Mifflin Harcourt
6. *Reading Wonders, K–6*
7. *StudySync, 6–8*
McGraw-Hill School Education
8. *Reach for Reading, K–6*
National Geographic/Cengage Learning
9. *SpringBoard ELA/ELD, 6–8*
The College Board–SpringBoard



TOM TORLAKSON
State Superintendent
of Public Instruction

Program 3

Biliteracy Language Arts/ ELD Program, K–8

Basic grade-level biliteracy program:

- Provides instructional materials in English and in a language other than English
- Is consistent with the content of the CA CCSS for ELA, and includes linguistic modifications for the non-English language
- Materials are designed to ensure that students are successful in developing literacy in English and another language
- Materials also provide instruction consistent with the CA ELD Standards.
- English language development instruction should assist students in acquiring English as quickly and efficiently as possible



TOM TORLAKSON
State Superintendent
of Public Instruction

Reviewer Recommended Materials for Program 3

1. *Lectura Maravillas, K–6*
McGraw-Hill School Education
2. *Benchmark Adelante, K–6*
Benchmark Education



TOM TORLAKSON
State Superintendent
of Public Instruction

Program 4

Intensive Intervention Program in ELA, 4–8

Intensive Intervention Program:

- Supports a basic program and provides an accelerated, intensive intervention pathway that supports the needs of students in grades 4-8 whose academic performance, including proficiency in ELA and literacy in reading and writing, is two or more years below grade level
- Program could be used as a temporary replacement core where students are non-readers in the first- and second-grade level as evidenced in a broad set of measures



TOM TORLAKSON
State Superintendent
of Public Instruction

Program 4

Intensive Intervention Program in ELA, 4–8, cont.

The materials in this program:

- Are not intended to be a substitute for ELD instruction
- Designed for students to gain two grade levels for each year of instruction while providing a rich curriculum supporting the five themes: Meaning Making, Language Development, Effective Expression, Content Knowledge, and Foundational Skills
- Designed to accelerate students' successful reentry into a basic program and include clear instructional plans and tools for entering and exiting the program



TOM TORLAKSON
State Superintendent
of Public Instruction

Reviewer Recommended Materials for Program 4

1. *CA Pearson iLit*
Pearson Education, Inc., p.a. Scott Foresman
and Prentice Hall
2. *California Read 180*
Scholastic, Inc.
3. *Inside*
National Geographic/Cengage Learning
4. *Language! Live California*
Voyager Sopris Learning
5. *FLEX Literacy*
McGraw-Hill School Education



TOM TORLAKSON
State Superintendent
of Public Instruction

Program 5

Specialized Designated ELD Program, 4-8

Specialized designated ELD instructional program:

- Provides an intensive, accelerated pathway that supports the needs of English learners, including those at risk of becoming or who are long-term English learners, whose academic performance is below grade level, are making minimal progress towards English proficiency, and whose lack of language proficiency precludes them from performing at grade level.
- Designed to support students in their movement to grade-level proficiency in English within 12-18 months and include clear instructional plans and tools for entering and exiting the program.



TOM TORLAKSON
State Superintendent
of Public Instruction

Reviewer Recommended Materials for Program 5

1. *Escalate English* ©2017
Houghton Mifflin Harcourt
2. *CA Pearson iLit ELL*
Pearson Education, Inc. p.a. Scott Foresman
and Prentice Hall
3. *California English 3D Course A and Course I
System*
Scholastic, Inc.



| | | |
|--------------------------|--------------------------|-----------------------|
| Curriculum & Instruction | Testing & Accountability | Professional Learning |
| Finance & Grants | Data & Statistics | Learning Support |
| | | Specialized Programs |

Home » Curriculum & Instruction » English Language Arts » Instructional Materials

[Printer-friendly version](#)

List of Submitted ELA/ELD Programs

The following publishers have submitted the following instructional materials programs for consideration of adoption by the California State Board of Education.

Program Types 1, 2, and 3

| Publisher | Program Name | Program Type | Grades | Review Panel Finding |
|---------------------------------|--|--------------|--------|----------------------|
| Amplify Education, Inc. | Core Knowledge Language Arts California Edition (CKLA CA) | 1 | K-5 | Not Recommended |
| Amplify Education, Inc. | Core Knowledge Language Arts with Language Studio: California Edition (CKLA/LS CA) | 2 | K-5 | Not Recommended |
| Amplify Education, Inc. | Amplify ELA: California Edition | 1 | 6-8 | Recommended |
| Amplify Education, Inc. | Amplify ELA: California Edition and Amplify ELD: California Edition | 2 | 6-8 | Recommended |
| Benchmark Education Company | Benchmark Advance | 2 | K-6 | Recommended |
| Benchmark Education Company | Benchmark Adelante | 3 | K-6 | Recommended |
| The College Board – SpringBoard | SpringBoard, English Language Arts | 1 | 6-8 | Recommended |
| The College Board – SpringBoard | SpringBoard, English Language Arts & English Language Development | 2 | 6-8 | Recommended |
| EMC Publishing, LLC | Mirrors & Windows: Connecting with Literature | 1 | 6-8 | Recommended |
| Houghton Mifflin Harcourt | Houghton Mifflin Harcourt California Journeys @2017 | 2 | K-5 | Recommended |
| Houghton Mifflin Harcourt | Houghton Mifflin Harcourt California Journeys-Collections @2017 | 2 | K-6 | Recommended |
| Houghton Mifflin Harcourt | Houghton Mifflin Harcourt California Collections @2017 | 2 | 6-8 | Recommended |
| McGraw-Hill School Education | Reading Wonders | 1 | K-6 | Recommended |
| McGraw-Hill School Education | Reading Wonders | 2 | K-6 | Recommended |
| McGraw-Hill School Education | StudySync | 1 | 6-8 | Recommended |
| McGraw-Hill School Education | StudySync | 2 | 6-8 | Recommended |

TOM TORLAKSON
State Superintendent
of Public Instruction



TOM TORLAKSON
State Superintendent
of Public Instruction

2015 ELA/ELD Instructional Materials Review – Next Steps

- ELA/ELD Subject Matter Committee and Instructional Quality Commission make recommendations
September 24-25, 2015
- SBE holds public hearing and takes action on recommendations
November 19-20, 2015



TOM TORLAKSON
State Superintendent
of Public Instruction

Using Instructional Materials Not Adopted by the SBE

- *EC* Section 60210 allows LEAs to use instructional materials not adopted by the SBE that are aligned with the academic content standards
- If LEAs use instructional materials not adopted by the SBE, the majority of the participants in the review process are classroom teachers assigned to the subject area or grade-level of materials
- LEAs may also use supplemental resources that meet the requirements of the social content standards



TOM TORLAKSON
State Superintendent
of Public Instruction

Using Instructional Materials Not Adopted by the SBE

Link to CDE's Instructional Materials FAQ
Web page:

<http://www.cde.ca.gov/ci/cr/cf/imfrpfaq1.asp>



TOM TORLAKSON
State Superintendent
of Public Instruction

English Language Arts/ English Language Development Framework

for California Public Schools

Kindergarten Through Grade Twelve



Foundational Speaking
Language Skills Meaningful Learning
Collaborative Interactions
Language Writing Development Listening
Writing Development Foundational
Productive Reading Speaking
Speaking Content Speaking Language
Knowledge Foundational
Expression Interpretive
Meaning Language
Speaking Making Developmental
Skills Effective Expression
Effective Expression Meaningful
Knowledge Listening Skills Effective Expression

Adopted by the California State Board of Education, July 2014
Published by the California Department of Education
Sacramento, 2015



TOM TORLAKSON
State Superintendent
of Public Instruction

ELA/ELD Framework Update

- Final edited, election version posted on the ELA/ELD Framework Web page at <http://www.cde.ca.gov/ci/rl/cf/elaeldfrmwksbeadopted.asp>
- Link to whole document available via link to the Digital Chalkboard
- Links to each individual chapters on Web page
- Building supporting resources



TOM TORLAKSON
State Superintendent
of Public Instruction

Launching the ELA/ELD Framework

2015

- September 30 – San Bernardino County Office of Education
- October 21 – Butte County Office of Education
- November 6 – Orange County Office of Education



TOM TORLAKSON
State Superintendent
of Public Instruction

Launching the ELA/ELD Framework

2016

- January 29 – Center for the Advancement of Reading & Los Angeles COE (LAX)
- April 25 – Santa Clara County Office of Education

See the CDE ELA/ELD Launch Event Web page for information and registration

<http://www.cde.ca.gov/ci/rl/cf/elaeldfwlaunchevents.a>

sp



TOM TORLAKSON
State Superintendent
of Public Instruction

Online Resources

- ELA/ELD Framework
<http://www.cde.ca.gov/ci/rl/cf/elaeldfrmwrksbeadopted.asp>
- Chart of Snapshots & Vignettes and Chart of Figures (chapter, title, page numbers)
- Snapshots, vignettes, and figures all in separate documents
- White paper on Foundational Skills by the writers



TOM TORLAKSON
State Superintendent
of Public Instruction

Online Resources (cont)

- CA ELD Standards Online Professional Learning Modules (with videos and information on/materials from the ELA/ELD Framework):
 - Getting Started:
<https://www.mydigitalchalkboard.org/portal/default/Content/Viewer/Content?action=2&scld=509334>
 - A Deeper Dive:
<https://www.mydigitalchalkboard.org/portal/default/Content/Viewer/Content?action=2&scld=509621>



TOM TORLAKSON
State Superintendent
of Public Instruction

CCSS ListServ

Join the ListServes to receive information and updates regarding the implementation of the Common Core State Standards and the SBAC Assessment

To join the CCSS Resources Updates:

Send a "blank" message to:

join-commoncore@mlist.cde.ca.gov

To join the SBAC/Assessment Updates:

Send a "blank" message to:

subscribe-sbac@mlist.cde.ca.gov



TOM TORLAKSON
State Superintendent
of Public Instruction

Questions?

ELA/ELD Framework

Cynthia Gunderson

Curriculum Frameworks Unit
California Department of Education
cgunderson@cde.ca.gov
916-319-0451

2015 ELA/ELD Instructional Materials Review

Jim Long

Instructional Resources Unit
California Department of Education
jlong@cde.ca.gov
916-323-4583