

CENTER FOR HEALTH EQUITY AND QUALITY RESEARCH

2013 Annual Report
July 1, 2012 – June 30, 2013



Table of Contents

LETTER FROM THE DIRECTOR	1
CHEQR FACULTY AND STAFF	2
CHEQR ORGANIZATION CHART	4
INTRODUCTION	5
CHEQR GRANTS	7
<u>SCHOLARSHIP</u>	
PUBLICATIONS BY CHEQR FACULTY AND STAFF	9
ABSTRACTS AND PRESENTATIONS	11
<u>APPENDIX A</u>	
LISTING OF CHEQR RESEARCH PROJECTS BY DEPARTMENT	13

Letter from the Director

The Center for Health Equity and Quality Research (CHEQR) is an important research resource for the UF Health Jacksonville. The mission of CHEQR is to conduct applied research on clinical care and health disparities among populations served by UF Health in Jacksonville. CHEQR is built on the principles of 1) optimal health for all individuals and the elimination of health disparities and 2) promoting change through quality research and education.

CHEQR core faculty include 1 MD, 1 MD/PhD, 5 PhDs, and 6 research coordinators with training in epidemiology, biostatistics, health education and evaluation research, health services and outcomes research and mental health services research. CHEQR faculty and staff are expert in the use of a wide range of research methods including community evaluation research, community-based participatory research, quality of care and outcomes research, clinical trials and translational research. A primary goal of CHEQR is to build the research infrastructure and capacity of UF Health Jacksonville by:

- Providing research design and analysis consultation services to faculty, residents and fellows including help with IRB preparation and submission, development of protocols, grant development, data collection, data analysis and report generation.
- Assisting UF faculty in the development of research teams through collaborations with investigators from UF Gainesville and other institutions.
- Providing data management and analytic support to quality management initiatives for the enterprise.
- Providing education to faculty, residents and fellows on biostatistics, research design and epidemiology through annual lecture series and on-line courses.
- Providing mentoring on research and project management support for fellows to help develop the next generation of faculty at UF Health.



CHEQR has successfully competed for grants and contracts to expand its capacity in the 4 years it has been in existence. We currently collaborate with multiple College of Medicine Departments including Surgery, Neurology, Internal Medicine, Community Health and Family Medicine, Pediatrics, and Emergency as well as the College of Nursing, Pharmacy, and Public Health and Health Professions on research projects by faculty, fellows and residents. This report gives an overview of our accomplishments.



David L. Wood, MD, MPH
Professor of Pediatrics
Director, Center for Health Equity and Quality Research

Center for Health Equity and Quality Research (CHEQR)

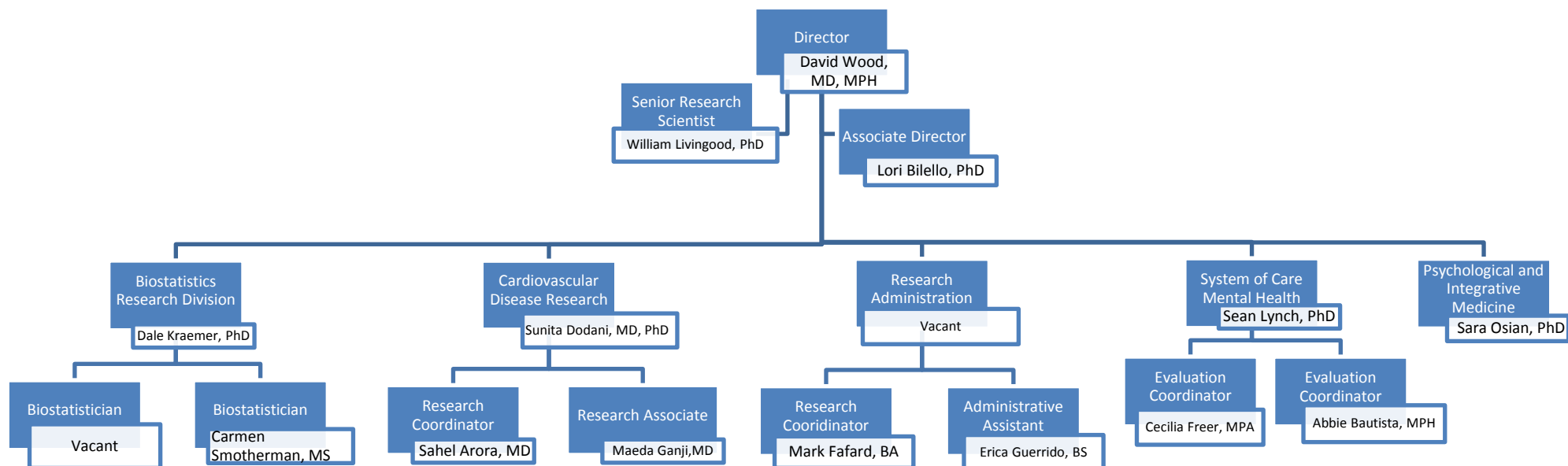
CHEQR FACULTY

	<p>David L. Wood, MD, Director, Professor, Pediatrics Dr. Wood is the Director of CHEQR, JaxHats and the Global Health Program at UF-Gainesville. Dr. Wood's area of expertise involves quality of care and health services research. His research focus is on healthcare transition for adolescents and young adults with medical and mental health needs.</p>
	<p>Lori A. Bilello, PhD, MBA, MHS, Assistant Professor, Medicine Dr. Bilello is the Associate Director of CHEQR and her background is in health services research, planning and evaluation. Previously, she was the Executive Director of the Health Planning Council of Northeast Florida. Her research interests include population health and healthcare delivery research.</p>
	<p>William Livingood, PhD, Senior Researcher Dr. Livingood is the former director of Duval County Health Department's Institute for Public Health Informatics and Research and is the Senior Research Scientist CHEQR. Dr. Livingood has an extensive background in health education, community evaluation, Bioinformatics and Outcomes Research.</p>
	<p>Dale Kraemer, PhD, Biostatistician, Associate Professor, Neurology Dr. Kraemer is the Director of the Biostatistics Research Division within CHEQR. He has a background in medical informatics, clinical epidemiology, public health, preventive medicine and pharmacy Practice. His research emphasis includes cost effectiveness analysis and clinical and translational research.</p>
	<p>Sunita Dodani, PhD, MD, Associate Professor, Cardiology Dr. Dodani is an Epidemiologist and Cardiologist and is currently involved with outcomes research on cardiovascular disease among minority groups.</p>
	<p>Sean Lynch, PhD, MSW, CHEQR Research, Assistant Professor, Psychiatry Dr. Lynch is the lead evaluator for the SAMHSA funded System of Care initiative. He is a Licensed Certified Social Worker and has a background in mental health services research.</p>
	<p>Sara Osian, PhD, Assistant Professor, Emergency Medicine Dr. Osian's works with Corporate Wellness and Palliative Care, and clinically has a Psycho-oncology clinic. Her area of expertise focuses on quality of life, disparities, Integrative Medicine, and clinical distress in oncology patients.</p>

CHEQR STAFF

Biostatistics	
	Carmen Smotherman, MS , received her Masters of Science in Statistics in 2008 from the University of North Florida. Carmen has worked as a Biostatistician with CHEQR since 2011. Carmen has specific interests in issues of agreement and reliability and survival analysis.
Administration/Support	
	Mark Fafard, BA , has worked as a Research Assistant with CHEQR since 2010. Mark has experience in global health and has worked in rural health settings on Ecuador's Galápagos Islands. He is fluent in Spanish and is interested in Pan American Health issues.
	Erica Guerrido, BS , received her Bachelors in Biology and Public Health from UNF in 2010, and has worked as a Research Assistant with CHEQR since 2011. Erica is working to continue her education to achieve her Master's degree in Public Health.
	Sahel Arora, MD , has worked as a Research Assistant with CHEQR since 2012. Sahel graduated from St. Matthew's University, Cayman Islands in 2012. He is, currently, applying for a Neurology residency position.

Center for Health Equity and Quality Research Organizational Chart



As of 6/30/13

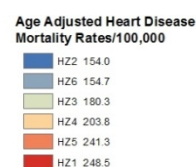
Introduction

Profound health disparities persist among low income and minority children and adults in the United States and Northeast Florida. These disparities are evident in higher rates of many acute and chronic diseases, barriers to appropriate health care and higher morbidity and mortality rates. The causes of health and health care disparities for poor and minority populations are multi-factorial, and include environmental disadvantage and exposure, access to and quality of health care, and patient health literacy and adherence. Better understanding of the root causes of disparities will lead us to the development and implementation of effective interventions to reduce the disparities and improve the health of all populations. Eliminating health disparities is one of the two “overarching goals” of Health People (HP) 2010 (US DHHS, 2007). The strategic plan for the DHHS through 2015 has as a major focus to reduce the burden of disease and disparities in chronic diseases among children and adults in the areas of obesity, heart disease, type II diabetes, COPD, and cancer (CDC, 2005). The NIH ranks the study and reduction of health disparities third among its top five priorities (IOM, 2006).

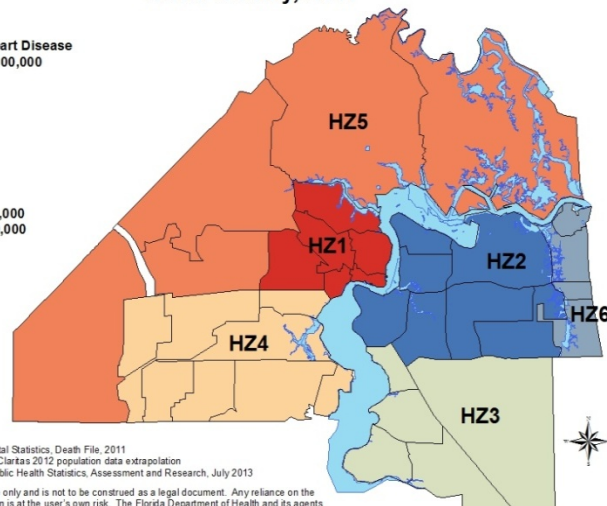
The city of Jacksonville, Florida provides unique opportunities for both studying root causes of and developing interventions to address health disparities in disadvantaged African Americans and Caucasians. The U.S. Census Bureau estimates nearly 900,000 people resided in the 774 square mile city during 2012, and 30% self-reported as African American (the highest proportion of African Americans of any major Florida city). The six zip code urban core area of the city (32202, 04, 06, 08, 09, 54) comprise Health Zone 1 (see the map below) has a major concentration of the African American population and is gripped by pervasive poverty. UF Health Jacksonville is the major provider of health care to Health Zone 1 as well as those who do not have insurance throughout Duval County. Individuals from Health Zone 1 experience mortality and hospitalization rates from cardiovascular disease, stroke, diabetes and cancer that are 50 to 400% higher than the other areas of the city or the state. UF Health Jacksonville has the assets and resources and is ideally positioned to provide leadership on research and services to address health disparities experienced by disadvantaged populations in NE Florida.

2011 Health Disparity Indicators		
	Duval County	Health Zone 1
Death Rate/100,000		
Cancer	194.0	227.3
Heart Disease	188.4	248.5
Diabetes	30.9	58.3
Population		
% White	62.8%	18.9%
% Black	29.8%	78.0%
% Other	7.4%	3.1%
Income		
Median Household Income	\$49,463	\$27,759
% People Living in Poverty	14.2%	31.2%

**Heart Disease Mortality Rates by Health Zone
Duval County, 2011**



Duval: 188.4/100,000
Florida: 153.0/100,000



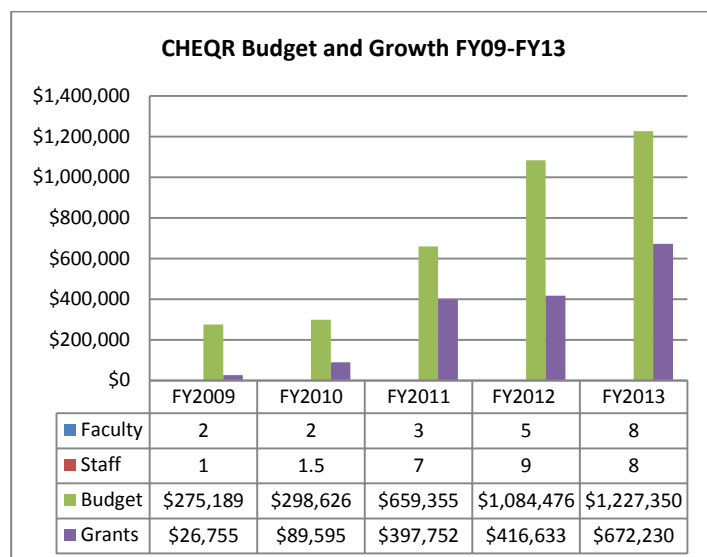
Source: FDOH, Office of Vital Statistics, Death File, 2011
Source: Census 2010 and Claritas 2012 population data extrapolation
Prepared by: FDOH DC, Public Health Statistics, Assessment and Research, July 2013
This product is for reference only and is not to be construed as a legal document. Any reliance on the information contained herein is at the user's own risk. The Florida Department of Health and its agents assume no responsibility for any use of the information contained herein or any loss resulting therefrom.

About CHEQR

The primary goal of the Center for Health Equity and Quality Research is to conduct outcomes and health services research focused on understanding and addressing health and health care disparities for underserved populations. Our research is multidisciplinary, including researchers with expertise in clinical medicine, biostatistics and epidemiology, health services research, social and behavioral research, community-based participatory research and research management and data management capabilities. The vision of CHEQR is to be a unique University-Community collaboration, internationally known for its contribution to applied research in health equity and health disparities. We will achieve that by collaborating with UF College of Medicine-Jacksonville faculty and community partners to implement cutting edge research.

CHEQR has experienced significant growth over the past 5 years with grant revenues growing from zero in 2008 to \$672,230 in 2013 (see graph above). We have hired two new additional PhD-level faculty and we expect to continue to expand our consultation and education services as well as expand our grant support.

We are also building our local research capacity by expanding our primary care practice-based research network (JaxHERO) that is composed of outpatient clinics at UF Health Jacksonville and the Duval County Medical Department. This network of 33 UF clinics and 14 DCHD clinics serves over 150,000 patients who are disproportionately minority and poor with high rates of diabetes, hypertension, cancer and other conditions. This network is currently fielding or developing four investigator-initiated studies. We have recently added primary care providers from Mayo Clinic Jacksonville and the St. Vincent's Family Practice Residency Program and developing relationships with the Navy and Veterans Administration.



Education Programs. To increase the research capacity of the faculty and trainees at UF Health Jacksonville, CHEQR provides research education programs tailored to the specific needs of fellows and faculty. We provide a lecture series on research design in an e-learning course format that includes an overview of research methodology, examples of types of study designs taken from published studies in different disciplines and exercises designed to reinforce material through application of research methods. We are also providing an introductory biostatistics course that is available on the e-learning platform (Sakai) which is self-paced and has learning exercises appropriate for specific fellowship programs or clinical disciplines. In addition to these courses, CHEQR faculty also provides educational lectures as requested.

Consultation Services. CHEQR provides research design and analysis consultation services to faculty, residents and fellows including assistance with IRB preparation, development of protocols, data collection, data analysis, report generation and grant development. We also assist with abstract and manuscript preparation as part of the end product of our consultation services. To request a consultation please complete the [consulting and research services form](http://hscj.ufl.edu/cheqr/BiostatisticalServices.aspx) available at <http://hscj.ufl.edu/cheqr/BiostatisticalServices.aspx>

Grants

CHEQR has been successful at securing external funding through collaborative grant applicants with UF-Jacksonville clinicians, researchers and fellows, local partnerships including with the Florida Department of Health, UF-Gainesville based researchers and researchers from a diverse array of Universities. Below are grants that have been awarded to CHEQR faculty or where CHEQR faculty has collaborated with other faculty.

Grants Awarded

Principal Investigator	Collaborators	Sponsor	Title	Project period	Total Award
William Livingood	UF-College of Health & Human Performance, DCHD	NIH (U13)	Academic and Community Partnerships for CBPR Research on Social Media and Digital	01/2012 - 12/2014	\$90,199
Jeffrey Goldhagen	Dept. of Pediatrics, Emergency Medicine, CHEQR	HRSA	Faculty Development in Community and Societal Pediatrics	09/2011 - 09/2016	\$1,046,714
David Wood	Dept. of Psychiatry	SAMHSA	Evaluation of the Fostering Systems of Care Initiative (SOCl) Program	01/2011 - 09/2017	\$1,200,000
Alyson Hall	CHEQR, JaxHERO PBRN	Aetna Foundation	The Relationship between Primary Care Medical Homes, Patient Engagement, and the Processes and Outcomes of Care among Individuals Living with Diabetes	05/2011 - 04/2013	\$249,977
William Livingood, Lori Bilello	Florida Public Health PBRN	Robert Wood Johnson (RWJF)	Public Health PBRN Cost Study	08/2013 - 01/2015	\$150,000
Sarah Osian	UF College of Nursing UF Integrative Medicine UF Arts in Medicine	UF Nursing Adm Council	CoreCARE: Comprehensive Stress Management Intervention for Nurses	2/1/2013-6/1/2013	\$6,500
Sarah Osian	Dept. of Surgery UF Proton Institute Dept. of Psychiatry	Komen Foundation	Psychological Screening and Treatment for Breast Health Patients	4/1/13-3/31/2014	\$35,000
Sarah Osian	Dept. of Surgery UF Proton Institute Dept. of Psychiatry	Riverside Foundation	Distress Screening and Treatment for Cancer Patients	4/1/13-3/31/2014	\$35,000
Sarah Osian	Dept. of Emergency Medicine Corporate Wellness	Angie's Spa Foundation	Inpatient Oncology Massage Therapy	9/1/2013-8/31/2014	\$23,000
Mark McIntosh	CHEQR	Riverside Foundation	Palliative Care Liaison in the Emergency Department	8/21/2012-8/20/2013	\$50,000
Mark McIntosh	CHEQR	Livestrong Foundation	Palliative Care Community Impact	5/1/2013-10/1/2014	\$10,000
Nipa Shah	CHEQR, Total Care Clinic	duPont Foundation	Nutrition services for Total Care Clinic	9/1/2013-8/31/2014	\$108,423

Grants submitted but not funded

Principal Investigator	Collaborators	Sponsor	Title	Submit Date	Total Budget
Sean Lynch	Departments of Pediatrics and Psychiatry	UF-ORA	Role of the Medical Home Model in Homeless Children's Access to Mental Health Services	August 2012	\$10,000
Sunita Dodani	Duval County Health Department	Jesse Ball DuPont Foundation	HEALS-Healthy Eating and Living Spiritually	September 2012	\$100,000
David Wood	University of North Carolina, Boston Children's Hospital	HRSA	Development & Validation of a HCT Readiness Assessment	September 2012	\$899,511
Sunita Dodani	UCLA	UF-CTSI	HDL Function Assessment for Cardiovascular Disease in High-risk South Asians	November 2012	\$25,000
Sunita Dodani	Kansas University Medical Center/ UCLA	NIH-NHLBI	Causes of Increasing Heart Diseases in South Asian Immigrants: Dysfunctional HDL Tested by a Novel Cell Free Assay	November 2012	\$5,000,000
Gurjit Kaeley	CHEQR	Rheumatology Research Foundation	Developing a sonographic dactylitis outcome measure	November 2012	\$400,000
David Wood	Departments of Psychiatry, Family Medicine and Surgery Oregon Health & Sciences	AHRQ	Infrastructure Development Program in PCOR	December 2012	\$3,334,982
Sarah Osian		CAPC	Integrative Approaches to Palliative Care	January 2013	\$50,000
Lori Bilello	College of Public Health and Health Professions	AHRQ	Estimating the Costs of Supporting PC Practice Transformation	February 2013	\$98,533
Sarah Osian, Laila Samiian		Komen Foundation	Genetic Testing for Breast Cancer Patients	February 2013	\$30,000
Sarah Osian, Laila Samiian		Riverside Foundation	Genetic Testing for Breast Cancer Patients	February 2013	\$35,000
Sunita Dodani	Duval County Health Department	Astra Zeneca	HEALS-Healthy Eating and Living Spiritually	February 2013	\$203,000
Mobeen Rathore	CHEQR, College of Nursing	HRSA	AETC Education for NPs and PAs	March 2013	\$1,600,000
Sunita Dodani		Robert Wood Johnson (RWJF)	LOI-Childhood Obesity Prevention Program for African American-CHHIL	March 2013	\$100,000
Sunita Dodani	University of Texas SW-Dallas	Merck Pharmaceuticals	Dysfunctional HDL and Coronary Artery Calcium Scores	March 2013	\$173,000
Kenyatta Lee	CHEQR, Dept. of CHFM	PCORI	Addressing health disparities with the Diabetes Rapid Access Program (DRAP)	April 2013	\$801,176
Linda Cottler	CHEQR	PCORI	Depression in community by improving literacy	April 2013	\$1,500,000
Colon-Otero	CHEQR	PCORI	Collaborative Intervention to Reduce Palliative Care Disparities	April 2013	\$500,000
Jeffrey Goldhagen	CHEQR, Jacksonville Area Legal Aid	Riverside Foundation	Responding to the Determinants of Health Across the Life Course —Implementation and Evaluation of the NE FL Legal Medical Partnership	June 2013	\$113,631

Publications

Milteer, RM, Ginsburg, KR, Mulligan, DA, Ameenuddin, N, Brown, A, Christakis, DA, Cross, C, Falik, HL, Hill, DL, Hogan, MJ, Levine, AE, O'Keefe, GS, Swanson, WS, Siegel, BS, Dobbins, MI, Earls, MI, Garner, AS, McGuinn, L, Pascoe, J, **Wood, DL**. The importance of play in promoting healthy child development and maintaining strong parent-child bond: focus on children in poverty. *Pediatrics* 2012;129(1):e204-13.

Siegel, BS, Dobbins, MI, Earls, MF, Garner, AS, Pascoe, J, **Wood, DL**, High, PC, Donoghue, E, Fussell, JJ, Gleason, MM, Jaudes, PK, Jones, VF, Rubin, DM, Schulte, EE, Macias, MM, Bridgemohan, C, Goldson, E, McGuinn, LJ, Weitzman, C, Wegner, LM. Early childhood adversity, toxic stress, and the role of the Pediatrician: Translating developmental science into lifelong health. *Pediatrics*. 2012;129: e224 - e231.

Shonkoff J, Garner AS, Siegel BS, Dobbins MI, Earls MF, McGuinn L, Pasco J, **Wood DL**. The Lifelong Effects of Early Childhood Adversity and Toxic Stress. *Pediatrics*. 2012;1: e232 -e246.

Zeretzke C, McIntosh M, Wylie T, Kalynych K, **Wood DL**. Emergency physicians using an online immunization registry perform fewer blood screens for occult bacteremia on children aged 6-24 months who present to ED with fever without a source. *Pediatric Emergency Care*. 2012;28: 640-645.

Hered R, **Wood DL**. The See by Three Florida Project: Preschool Vision Screening by AAP Guidelines in the Medical Home. *Public Health Rep*. 2013 May-Jun;128(3):189-97.

Wood DL, Goldhagen J. Promoting Child Health Equity: Family Centered Care is Just One Piece of the Puzzle. *Pediatrics*. 2013; 131(2):336-7.

Hess JS, **Wood DL**, Homeister H. Florida Health and Transition Services (FloridaHATS): Bridging the Gap for Adolescents and Young Adults with Special Health Care Needs. *Florida Family Physician*. 2012;61(2):6-7.

Wood DL. Transition to Adult Care. *Audio Digest, Pediatrics*. 2013:Volume 59, Issue 4.

Wood DL, Reiss JG, Ferris ME, Edwards LR, Merrick J. (Eds.) Transition from Pediatric to Adult Medical Care. Nova Publishers, Hauppauge, NY, 2012.

Dodani S, Songer T, Ahmed Z, Laporte RE. Building research capacity in developing countries: Cost-effectiveness of an epidemiology course taught by traditional and video-conferencing methods in Pakistan. *Telemed J E Health*. 2012 Oct; 18(8):621-8. doi: 10.1089/tmj.2011.0262

Patel JV, **Dodani S**, Gill PS. Considerations for equity in cardiovascular healthcare: the South Asian example. *Int J Clin Pract*. 2012; 66(3):234-7.

Lynch S, Cho J, Ogle S, Sellman H, dosReis S. (forthcoming). Communication among clinicians for attention-deficit hyperactivity disorder (ADHD) treatment. *Clinical Pediatrics*, 53(1), 7-13.

Lynch S, Franke T. Communicating with pediatricians: Developing social work practice in primary care. *Social Work in Health Care*. 2013; 52(4), 397-416.

Garrard, A, Sollee, DR, **Butterfield, RC**, Johannsen, L, Wood, A, Bertholf, RL. *Clinical Toxicology*. 2012 Aug; 50(7): 562-566. 5p.

Solberg Nes L, Liu H, Patten CA, **Rausch Osian SM**, Sloan JA, Garces YI, Cheville AL, Yang P, Clark MM. Physical activity level and quality of life in long term lung cancer survivors. *Lung Cancer*. 2012 Sep; 77(3): 611-6.

Deng G, **Rausch Osian SM**, Jones LW, Gulati A, Kumar N, Greenlee H, Pietenza M, Cassileth B. Complementary Therapies and Integrative Medicine in Lung Cancer: American College of Chest Physician Evidence-Based Clinical Practice Guideline, 3rd Edition. *Chest*. 2013; 143; 5 suppl: e420S-e436S.

Clark MM, Atherton PJ, Lapid MI, **Rausch Osian SM**, Frost M, Rummans TA. Cancer Caregiver Fatigue: A High Level of Symptom Burden. *American Journal of Hospice and Palliative Medicine*. 2013 Feb 21. [Epub ahead of print] doi: 10.1177/1049909113479153

Livingood WC, Marshall N, Peden A, Gonzales K, Gulzar Shah, Alexander D, Penix Kellie, Lawrence R, Russell Toal, Woodhouse L. Health Districts as Quality Improvement Collaboratives and Multi-Jurisdictional Entities. *J Public Health Manag Pract*. 2012 Nov; 18(6):561-70.

Livingood WC, Marshall N, Peden A, Gonzales K, Shah G, Toal R, Penix K, Alexander D, Davis K, Nixon S, Cummings P, Riley W, Woodhouse L. Building Capacity to Support and Study QI in Local Georgia Public Health Systems. *Frontiers in Public Health Services and Systems Research*. 2012; 1(3): Article 6.

Allegre JP, **Livingood WC**. IOM report redefines the assessment and value of community-based prevention. *Health Educ Behav*. 2013 Feb; 40(1):3-5. doi: 10.1177/1090198113475623.

Woodhouse LD, Toal R, Nguyen T, Keene D, Gunn L, Kellum A, Nelson G, Charles S, Tedders S, Williams N, **Livingood WC**. A Merged Model of Quality Improvement and Evaluation: Maximizing Return on Investment. *Health Promot Pract*. Epub Feb 2013. Print 2013 Nov; 14(6):885-892.

Livingood WC, Goldhagen J, Bryant III T, Harmon RG, **Wood DL**. Institutionalizing the Academic Health Department within the Context of the 3 Fold Academic Mission. *J Public Health Manag Pract*. (In Press -Academic Health Department Theme issue).

Mabry PL, Milstein B, Abraido-Lanza AF, **Livingood WC**, Allegre JP. Opening a Window on Systems Science Research in Health Promotion and Public Health. *Health Educ Behav*. (In Press, Systems Science Theme Issue)

Wu YJ, Muldoon LL, Gahramanov S, **Kraemer DF**, Marshall DJ, Neuwelt EA. Targeting α V-integrins decreased metastasis and increased survival in a nude rat breast cancer brain metastasis model. *J Neurooncol*. 2012 Oct; 110(1):27-36.

Gahramanov S, Muldoon LL, Varallyay CG, Li X, **Kraemer DF**, Fu R, Hamilton BE, Rooney WD, Neuwelt EA. Pseudoprogression of glioblastoma after chemo- and radiation therapy: diagnosis by using dynamic susceptibility-weighted contrast-enhanced perfusion MR imaging with ferumoxytol versus gadoteridol and correlation with survival. *Radiology*. 2013 Mar; 266(3):842-52.

Livingood WC, Sabbagh R, Spitzfaden S, Hicks A, Wells L, Puigdomenech S, **Kramer DF**, **Butterfield R**, Riley W, **Wood DL**. A quality improvement evaluation case study: impact on public health outcomes and agency culture. *Am J Prev Med*. 2013 May; 44(5):445-52.

Anderson T, Wells SA, Maraqa NF, Wheeler S, Bailey C, **Smotherman C**, Rathore MH. Prevalence of Methicillin-Resistant Staphylococcus aureus (MRSA) Colonization among Congenital Heart Disease Patients Admitted to a Pediatric Intensive Care Unit. *World Journal for Pediatric and Congenital Heart Surgery*. 2013 Oct; 4(4):344-348.

Abstracts and Presentations

Patrick J, **Smotherman C**, Volpe C, **Lukens-Bull K**, **Kraemer DF**, Hargrove J, **Wood D**. Increase Use of Hospital Emergency Room in Cancer Care. American College of Surgeons 98th Annual Clinical Congress. September, 2012.

dosReis S, Wagner L, **Lynch S**, Frosch E. A model for patient-centered outcomes research: Caregiver's perspectives on child psychotropic treatment. AcademyHealth, Annual Research Meeting. Baltimore, MD. June, 2013.

Lynch S, **Freer C**, **Bautista M**, Waytowich V, Goldhagen J, **Wood D**, **Livingood W**. Using a community-based participatory approach to create a logic model for children's mental health system of care evaluation. University of Florida, College of Medicine Research Day. Jacksonville, FL. May, 2013.

Lynch S, Wood J, **Wood D**, Waytowich V, Cuffe S, Goldhagen J, **Livingood W**. Implementation of an innovative partnership for mental health screening and treatment among homeless families in Jacksonville, Florida. Children's Mental Health Research and Policy Conference. Tampa, FL. March, 2013.

dosReis S, Wagner L, **Lynch S**. Caregiver reported short and long-term outcomes of psychotropic treatment for children. The International Center of Mental Health Policy and Economics on Patient-Reported Outcomes in Mental Health Meeting. Washington, DC. September, 2012.

Fafard M, **Livingood W**, Goldhagen J. Combining Systems of Care Principles with Community Based Participatory Research Methods to Plan and Develop an Electronic Information System for Children's Mental Health Services. Society for Public Health Education's (SOPHE) 64th Annual Meeting. Orlando, FL. April, 2013.

Thomas BS, Lee KY, Stewart EB, Burwell A, Malcolm K, **Bilello LA**. Data Driven Team Approach in Reducing Health Disparities in a Medical Home Model. Xavier University 6th Health Disparities Conference. New Orleans, LA. March, 2013.

Bilello LA, Harle C, Harman J, Duncan RP, Cook RL. Organizational characteristics associated with electronic health record "meaningful use" in hospitals. AcademyHealth, Annual Research Meeting. Baltimore, MD. June, 2013.

Bilello LA, Harle C, Harman J, Duncan RP, Cook RL. The relationship between electronic health record Stage 1 Meaningful Use objectives and hospital quality of care. AcademyHealth, Annual Research Meeting. Baltimore, MD. June, 2013.

Thomas BS, Lee KY, Stewart EB, Burwell A, Malcolm K, **Bilello LA**. Impact of a data driven team approach in reducing health disparities in a medical home model. UF People's Scientific Conference. Gainesville, FL. June, 2013.

Mannings C, Kalynych C, Joseph MM, **Smotherman C**, **Kraemer D**. Knowledge assessment of sport-related concussion among caregivers of children 5-15 years enrolled in recreational tackle football. Duval County Medical Society Annual Meeting. Jacksonville, FL. November, 2012.

Mannings C, Kalynych C, Joseph MM, **Smotherman C**, **Kraemer D**. Knowledge assessment of sport-related concussion among caregivers of children 5-15 years enrolled in recreational tackle football. Injury Free Coalition for Kids 2012 Annual Conference. Kansas City, MO. November, 2012.

Patrick J, **Smotherman C**, **Lukens-Bull K**, **Kraemer DF**, Hargrove J, **Wood D**, Volpe C. Site Of Initial Presentation Affects Cancer Outcome. Academic Surgical Congress. New Orleans, LA. February, 2013.

DeVos MD E, Patel K, **Smotherman C**, **Wood D**. Effects of Global Health Service Trips on Medical Students at the University of Florida. Society for Academic Emergency Medicine Southeast Regional Conference. Jacksonville, FL. March, 2013.

Joseph MM, Cantville A, Kalynych C, Dyer M, **Smotherman C**, **Kraemer DF**. Knowledge assessment of caregivers of young soccer players regarding sport related concussion. Eastern SPR Annual Meeting. Philadelphia, PA. March, 2013.

Anderson T, Maraqa N, **Smotherman C**, Wheeler S, Bailey C, Rathore M. Prevalence and Acquisition of MRSA Colonization among Patients Admitted to a Pediatric Intensive Care Unit. Annual Meeting of the Pediatric Academic Societies. Boston, MA. April, 2013.

Wells SA, Mirza A, **Smotherman C**, Rathore MH. Prevalence of Vitamin D deficiency in HIV infected children and adolescents. Pediatric Academic Societies Meeting. Washington, DC. May, 2013.

Joseph MM, Cantville A, Kalynych C, Dyer M, **Smotherman C**, **Kraemer DF**. Knowledge assessment of caregivers of young soccer players regarding sport related concussion. Pediatric Academic Societies' Annual Meeting. Washington, DC. May, 2013.

Caminero S, Caldow K, Kaunitz A, **Smotherman C**. Is Uterine Leiomyomata Associated With Postmenopausal Bleeding? A Retrospective Review. UF Research Day. Jacksonville, FL. May, 2013.

Ashbaugh H, Simon L, Kalynych C, Chadwick S, **Kraemer D**. Determination of Accuracy in Emergency Department Dosing for Rapid Sequence Intubation. UF Research Day. Jacksonville, FL. May, 2013.

Wells SA, Mirza A, **Smotherman C**, Rathore MH. Prevalence of Vitamin D deficiency in HIV infected children and adolescents. UF Research Day. Jacksonville, FL. May, 2013.

O'Geen R, Sollee D, Schauben J, Kunisaki T, Aaronson P, **Smotherman C**. Use of N-acetylcysteine therapy beyond the 21 hour intravenous protocol for acetaminophen toxicity. UF Research Day. Jacksonville, FL. May, 2013.

Wells SA, Anderson T, Maraqa NF, **Smotherman C**, Wheeler S, Bailey C, **Kraemer D**, Rathore MH. Prevalence and Acquisition of Methicillin-Resistant Staphylococcus aureus Colonization among Patients Admitted to Pediatric Intensive Care Unit. UF Research Day. Jacksonville, FL. May, 2013.

Hendry P, Suen A, Kalynych CJ, Paul J. A Six Year Retrospective Review of Pediatric Firearm Injuries. UF Research Day. Jacksonville, FL. May, 2013.

Manvi S, Schreiber M, Johnson D, Jankowski CA. Impact of MDR Gram Positive De-escalation on Frequency of Appropriate Antibiotic Utilization in Critically Ill Patients with MRSA Negative BAL/ETA, Blood and Surveillance Culture Results. UF Research Day. Jacksonville, FL. May, 2013.

Randazzo D, **Butterfield R**, Cordek C, Hallman A, Johnson E, **Kraemer D**, McCoy L, Miller T, Musgrave D, **Smotherman C**, Silliman S. Neurology Patient In Hospital Length of Stay While Awaiting Transfer to an Inpatient Rehabilitation Facility; An Experience at an Urban Safety Net Hospital. UF Research Day. Jacksonville, FL. May, 2013.

Munoz JC, Tharpe AS, Brenner L, Salyers W. The Use of Self-Expanding Metal Stents for Treatment of Acute Colonic Obstruction: A Clinical Case Series. UF Research Day. Jacksonville, FL. May, 2013.

Appendix A - Research Projects FY 2013

In the following table provides an overview of the investigator initiated research projects by department that CHEQR has contributed to or taken the lead on.

Overview of CHEQR Activities FY 2013			
Department	Title/Topic	CHEQR Support	Outcome/Product
JaxHERO Practice Based Research Network			
Community and Family Medicine/Internal Medicine/Duval County Health Department			
David Wood, MD, MPH, Nipa Shah, MD, Lori Bilello, PhD	Jacksonville Health Equity Research Network (JaxHERO), a Practice Based Research Network Focused on Health Disparities	CHEQR provides the administrative infrastructure to support the network and assists researchers in accessing the network.	Development of the network, JaxHERO Healthcare Provider and Clinic Report.
Betsy Shenkman, PhD	Health Risk Assessment (HRAs) Study	CHEQR provides the RA to support the implementation of this CTSI project.	Implementation of CTSI research project, multi-site.
Alyson Hall, PhD, David Wood, MD, MPH, Fern Webb, PhD	Medical Home Study	CHEQR provides the RA to support the implementation of this grant funded project.	Grant submission and award.
Carolyn Tucker, PhD, David Wood, MD, MPH	Culturally Sensitive Health Care Using Health Information Technology	CHEQR provides the RA to support the development of this grant with Gainesville researchers.	R21 Grant submission.
Ghania Masri, MD, Linda Edwards, MD	Diabetes PQRS Study	Experiment design, data cleaning, and statistical analysis.	Ongoing.
Reetu Grewal, MD	Advanced Directives Study	Experiment design, data cleaning, data analysis and reporting.	Ongoing.
Anesthesiology			
Toki Oyetunde, MD	Short term effect of general anesthesia on the neurocognitive development of pediatric patients	Experiment design, data cleaning, data analysis and reporting.	
Anita Vinjirayer, MD	Remifentanil patient controlled analgesia for labor	Experiment design, data cleaning, and statistical analysis.	
Linda Young, MD	Methods to Decrease Postoperative Pain	Experiment design, data cleaning, data analysis and reporting.	
Cardiology			
Dominick Angiolillo, MD, PhD	Platelet Function Profiles in African Americans with CAD and Diabetes	Grant development	Ongoing.
Dominick Angiolillo, MD, PhD	Comparing international normalized ratio (INR) to rapid INR in thromboelastograph to assess blood hemostasis	Data Analysis	Analyses reported to investigator.

Philip Habib, MD	64 row ct coronary angiography for prediction of mortality: A systematic meta-analysis	IRB application, experiment conduction, data cleaning, data analysis, and reporting.	
Line Kemeyou, MD	Hemoconcentration and Heart Failure Readmission	Experiment design.	
Rachel Lee, MD	Determinants of ST segment elevation in lead AVR	Experiment design, data analysis and reporting.	Awaiting data to be cleaned by PI then analysis will be conducted, for resident presentation
Gladys Velarde, MD	PINK	Data analysis and reporting.	Ongoing.
Gladys Velarde, MD	HIBACE: HDL In Blacks with Cardiovascular Events	Protocol development, data analysis, draft findings, and reporting,	Abstract submitted. Manuscript in process.
CHEQR			
Sunita Dodani, MD	Healthy Eating and Living Spiritually	Exploratory data analysis and statistical analysis.	
Dale Kraemer, PhD	Health Disparities in Brain Tumors	Apply for Dean's Grant to obtain data from Florida Cancer Data System. Ongoing.	Funding approved.
Dale Kraemer, PhD	Health Disparities Index Development	Obtain NHANES data. Ongoing.	Initial analyses completed.
Sean Lynch, PhD	Feasibility of Shelter-Based Mental Health Screening for Homeless Children	Exploratory data analysis, statistical analysis, and draft findings.	Abstracts submitted. Ongoing.
David Wood, MD	Derivation and validation of TRAQ 5.0	Data cleaning, analyses, reporting.	Publication submitted for review.
Community Health and Family Medicine			
Nipa Shah, MD	Comparison of diabetic care in clinics with and without a diabetes registry.	Assist with design, sample size determination, preliminary data cleaning and analyses. Ongoing.	Ongoing.
Swati Sharma, MD	Chronic non-cancer pain in patients visiting a primary care center	Ongoing.	Ongoing.
Emergency Medicine			
Faheem Guirgis, MD	Capnography in Tracheostomy Patients	Experiment design, draft findings, and reporting.	Analyses completed. Ongoing.
Faheem Guirgis, MD	Cocaine Induced Chest Pain: A case for discharge	Data cleaning, data analysis, and reporting.	Abstract submitted.
Faheem Guirgis, MD	A Systematic Review of Long-term Organ-specific Outcome in Survivors of Severe Sepsis and Septic Shock	Experiment design, data cleaning, statistical analysis and reporting.	Analyses completed. Abstracts Submitted. Ongoing.
Phyllis Hendry	Health Literacy	Exploratory data analysis and statistical analysis.	Analysis completed. Abstract submitted.
Colleen Kalynych	LiquiBand II	Experiment design, statistical analysis, draft findings, and reporting.	Analysis completed. Abstract accepted.

Colleen Kalynych	Impact of Video Discharge Instructions from the Emergency Department in Regard to Caregiver Understanding of their Child's Fever and Closed Head Injury.	Statistical analysis, draft findings, and reporting.	Abstracts submitted.
Lorraine Mendez, MD	Ultrasound Guided Peripheral Vein Cannulation in Pediatric Patients	IRB application, study design, study conduction, data cleaning, statistical analysis, draft findings, and reporting.	Hold due to training delays.
Kristin McKee, MD	The Bubble Study	Data cleaning, exploratory data analysis, statistical analysis, draft findings, and reporting.	Analyses done, abstract underway.
Dhaval Patel, MD	Pediatric Uropathogen Resistance in the Emergency Department	Data cleaning, statistical analysis, draft findings, and reporting.	Abstract submitted. Publication underway.
Joseph Sabato, MD	Development of Cardiac Incidence Registry	Project planning and coordination, development of protocols, evaluation and data collection oversight.	Project is still in development stages.
Andrea Suen, MD	A Six Year Retrospective Review of Pediatric Firearm Injuries	Exploratory data analysis, statistical analysis, draft findings, and reporting.	Abstract submitted to Annals of Emergency Medicine 62 (4S): S69. Peer-reviewed publication.
Heide Valdes, MD	Exploratory study to describe pediatric cardiac arrest cases in the State of Florida based on the National Emergency Medical Service Information System (NEMSIS)	Study design, exploratory data analysis, draft findings, and reporting.	Ongoing.
Nicholas Wilkes, MD	Comparison of the disposable single use Ambu-aScope to flexible fiberoptic bronchoscope for nasotracheal intubation in simulated difficult airway.	IRB application, data cleaning, exploratory data analysis, statistical analysis, draft findings, and reporting.	Ongoing IRB approval in process.
Endocrinology, Diabetes, and Metabolism			
Margaret Gladysz, MD, Mae Sheikh-Ali, MD	Prospective and retrospective review of thyroid nodule characteristics and correlations with Fine Needle Aspiration (FNA) results	Data analysis and reporting.	Abstract submitted. Publication underway.
Mae Sheikh-Ali, MD	Sleep and Hookah Survey Among Youth	Advice given on project planning.	Ongoing.
Gastroenterology			
Ahmad Alkaddour, MD	Self-expanding stent for a benign and malignant lesion of the esophagus. Metal versus plastic?: A retrospective clinical case series	Data cleaning, exploratory data analysis, statistical analysis, draft findings, and reporting.	Analyses completed.
Melvin Bullock, MD	TNF/Calprotectin in acute enterocolitis	Data cleaning, exploratory data analysis, statistical analysis, draft findings, and reporting.	Analyses completed.

Bijo John, MD	Is There a Difference in Detection Rate of Colon Adenomas During Colonoscopy in Patients Sedated with Moderate Sedation or General Anesthesia?	IRB application, study design, study conduction, data cleaning, statistical analysis, draft findings, and reporting.	Analyses completed.
Suraj Naijk, MD	Community vs Hospital Acquired C Difficile	Experiment design, data analysis and reporting.	Abstract submitted.
Infectious Diseases			
Naja Wilson, BSN, RN	Sleep Quality and Presence of Sleep Disordered Breathing in An Inner City African American HIV Infected Population Aged 50 Years and Older	Data analysis and reporting.	Completed. Verified study findings.
Internal Medicine			
Herman Kado, MD	A Randomized Comparison of Transradial Approach for Coronary Angiography and its Effect on Patient and Operator Safety	Experimental design, data analysis and reporting.	Analysis completed.
Carlos Palacio, MD	Estimate post hoc statistical power for publication at the request of reviewers.	Estimated post hoc power.	Completed.
Laurie Ramrattan, MD	Relevance of tenonitis in patients with Rheumatoid Arthritis	Experimental design, data analysis and reporting.	Analyses completed.
Medical Oncology			
Naeem Latif, MD	Breast cancer data review	Data analysis and reporting.	Completed.
Nephrology			
Ronald Mars, MD	Prospective Randomized Comparative Study Between Select Commercialized Hemodialysis Tunneled Cuffed Catheters	Statistical analysis.	Provided text for grant application.
Hasan Riaz, MD	Association of certain GLUT1 susceptibility allele polymorphisms with the development of ESRD in diabetic and non-diabetics	IRB application, study design, data cleaning, data analysis, statistical analysis, draft findings, and reporting.	Provided text for grant application.
Neurology			
Dina Randazzo, MD	Neurology Patient in Hospital Length of Stay While Awaiting Transfer to an Inpatient Rehabilitation Facility	Exploratory data analysis and statistical analysis.	Abstract submitted.
Kalina Sanders, MD	Assessing the Impact of Health Literacy on Stroke Patient Education Retention	Statistical analysis, draft findings, and reporting.	Manuscript published in Preventing Chronic Disease.
Scott Silliman, MD	NIHSS score training exercise	Statistical analysis, draft findings, and reporting.	Abstract submitted.
Nursing			
Teri Chenot & Roberta Vallish, MSN, ARNP	QSEN Knowledge evaluation survey	Project planning, development of protocol.	Ongoing.
Roberta Christopher, MSN, ARNP	The relationship among presenteeism, nurse safety outcomes, and patient safety outcomes	Study design, data cleaning, data analysis, statistical analysis, draft findings, and	Ongoing.

		reporting.	
Patrice Jones	Transforming shift report to enhance nurse perception of patient safety and to improve the patient's experience	IRB application, study design, study conduction, data cleaning, data analysis, statistical analysis, draft findings, and reporting.	Analyses completed.
Kris Maddalena	Nursing Staffing - Float Survey	Study design, study conduction, data cleaning, and statistical analysis.	Ongoing.
Obstetrics and Gynecology			
Oluwakemi Adegoke, MD	Evaluation of OB-GYN providers attitudes toward nutrition in pregnancy	Data cleaning, data analysis, statistical analysis, draft findings, and reporting.	Analysis completed.
Maya Dhanani, MD	Inguinal hernias in women with chronic pelvic pain	Data cleaning, exploratory data analysis, and statistical analysis.	Analysis completed.
Kristen McMaster, MD	Modifying the EMR System to Improve Compliance with GBS Testing Guidelines	IRB application and study design.	Ongoing.
Melissa O'Connor, MD	History of Teenage Dysmenorrhea as a Predictor of Endometriosis at Laparoscopy	Study design and data cleaning.	Analysis completed.
Luis Sanchez-Ramos, MD	Comparing Index Tests in Meta-analysis	Statistical analysis.	Analyses completed.
Oral and Maxillofacial Surgery			
Jacob Yetzer	Glossotonsillar Carcinoma Treatment Outcomes	Data analysis, data cleaning.	Ongoing.
Orthopedics			
Anthony Bell, MD	Reamer Irrigator Aspirator (RIA) Versus Sequential Reaming in Femur Fractures: Radiographic and Clinical Outcomes with One Year Follow-up	Protocol development and experimental design, data analysis when data is collected.	Data is almost completed, analysis will be conducted, and this is for manuscript.
Brett Frykberg, MD	Hip fractures and outcomes based on clinical service	Protocol development and experimental design, data analysis, co-author.	Manuscript submitted.
Nathan Graves, MD	Normal adult ankle radiography	Data cleaning, statistical analysis, and reporting.	Analyses completed.
Andrew Levitt, MD	Acceptable displacement for closed reduced neck fractures of the lesser metatarsals	Protocol development and experimental design, data analysis when data is collected.	Analyses completed.
Zach Logan, MD	Significant knee effusions in Multi-ligament Injured Knees	Study design, data cleaning, exploratory data analysis, and statistical analysis.	Analyses completed.
Erinn Ponder, MD	Should Lisfranc amputations be first line: a retrospective review of transmetatarsal amputations	IRB application and statistical analysis.	Analyses completed.
Kris Wheeler, MD	Transphyseal ACL Reconstruction in the skeletally immature	Statistical analysis.	Ongoing.
Kris Wheeler, MD	Prevalence of FAI in patients undergoing THA	Statistical analysis.	Ongoing.

Pathology and Laboratory Medicine			
Agnes Aysola, MD	Assessment of off-label use of rFVIIa in hospitals	Data cleaning, exploratory data analysis, statistical analysis, and draft findings.	Ongoing.
Amir Mohammadi, MD	Oncotype DX ®: Modern techniques vs. old-fashioned pathology to predict prognosis in breast cancer.	Data analysis and reporting.	Manuscript is being worked on.
Pediatrics			
Andres Alarcon, MD	A Retrospective Analysis of Retention in Care of HIV Infected Pregnant Women at UF Cares Over a Course of Six Years.	Data cleaning, exploratory data analysis, statistical analysis, and draft findings.	Analysis completed.
Leigh Bragg, MD	Hepatitis C Exposed Newborns	Assist with protocol including sample size.	Protocol sections completed.
Leigh Bragg, MD	Pediatric Blood Cultures	IRB application, study design, data cleaning, and statistical analysis.	Analysis completed.
Nicole Cacho, MD	Impact of Physician Intervention on Breast Milk Feeding in Preterm Infants	IRB application, study conduction, data cleaning, data analysis, and statistical analysis.	Analysis completed.
Hanane Dahoui, MD	Implementation of Preventive Oral Health into Pediatric Primary Care Setting	Protocol development.	Ongoing.
Audrey Green	TRAQ assessment for QI	Data cleaning, draft findings, and reporting.	Completed.
Kelly Komatz, MD	Does Enrollment in a Community-based Palliative Care Program Change Location of Death?	Data cleaning, exploratory data analysis, statistical analysis	
Tabitha Lambert, MD	Assessing General Pediatricians' Knowledge Regarding Guiding Stars Designation for Childcare Programs	Statistical analysis.	Completed.
Nizar Maraqa, MD	Cost-Effectiveness of Routine Active Surveillance for Methicillin-Resistant Staphylococcus aureus Colonization in the Neonatal Intensive Care Unit	Data analysis.	Ongoing. Data for article and abstract.
Renu Sharma, MD	Breast milk vs. Formula: Outcomes and Other Clinical Parameters.	Data analysis and reporting.	Two abstracts submitted. Two manuscripts in preparation.
Sandy Suchomski, MD	Pilot Study for the Role of Acupuncture in Neonatal Abstinence Syndrome	Protocol development and experimental design, data analysis when data is collected.	Analyses completed.
Youness Tolaymat, MD	NEC in term and near term infants	Study design and statistical analysis.	
Saran Valdez-Johnson (Wells), MD	Prevalence of Vitamin D Deficiency in HIV Infected Children and Adolescents	Data collection, data analysis and reporting.	Ongoing. Oral Presentation at Pediatric Academic Societies Meeting in Washington, DC, May 2013.
Chantel Walker, MD	Build Self Esteem Through Sports	IRB application and study design.	
David Wood, MD, Ashley Bennett, MD	Add Health	Study design, data cleaning, exploratory data analysis, statistical analysis, draft findings, and reporting.	Manuscript submitted.

Pharmacy			
Rachael Carloni, PharmD	Prevention of Medication Errors Through Pharmacy-based Medication Reconciliation	Review research design, analyze data, summarize for report.	Analyses completed and abstract presented.
Jocelyn Congdon, PharmD	Impact of Pharmacist driven E-FORCSE Education on Physician Controlled Substance Prescribing Practices	Review research design, analyze data, summarize for report.	Analyses completed and abstract presented.
Adrienne DeBerry, PharmD	Impact of Collaborative Care Services for High-Risk Patients After Discharge from a Large Urban Academic Medical Center	Review research design, analyze data, summarize for report.	Analyses completed and abstract presented.
Kristin Eginger, PharmD	Impact of pharmacist interventions on highly active antiretroviral therapy medication errors in hospitalized HIV-infected patients	Protocol development and experimental design, data analysis when data is collected.	Analysis completed and abstract presented.
Donald Floresca, PharmD	Evaluation of Appropriate Serologic Testing for Suspected Heparin-Induced Thrombocytopenia	Review research design, analyze data, summarize for report.	Published in American Journal of Health-System Pharmacy – Vol 69. September 5, 2012.
Andrew Gatton, PharmD	Evaluation of the Continuation of Beta-Blockers Perioperatively in Non-Cardiac Surgery Patients	Review research design, analyze data, summarize for report.	Analyses completed and abstract presented.
Jennifer Hartman, PharmD	Retrospective Evaluation of Systemic Inflammatory Response Syndrome (SIRS) Resolution	Review research design, analyze data, summarize for report.	Ongoing.
Lisa Inge, PharmD	Teaching HIV Management to Pharmacy Students	Review research design, analyze data, summarize for report.	Analyses completed and abstract submitted.
Denise Kelley, PharmD	An Anti-Microbial Stewardship Approach to Minimizing Overuse of Antibiotics in Patients with Asymptomatic Bacteriuria	Review research design, analyze data, summarize for report.	Analyses completed and abstract presented.
Sloka Manvi, PharmD	Impact of MDR Gram-Positive De-escalation on Frequency of Appropriate Antibiotic Utilization in Critically Ill Patients with MRSA Negative BAL/ETA, Blood and Surveillance Culture Results	Review research design, analyze data, summarize for report.	Analyses completed and abstract presented.
Aaron Sango, PharmD	A Stewardship Approach to Optimize Antimicrobial Therapy through the Use of the Verigene Rapid Mixoarray Assay on Blood Cultures Positive with Enterococcus Species	Review research design, analyze data, summarize for report.	Analyses completed and abstract presented.
Susan Vaughan, PharmD	Impact of medication shortages on pharmacy budget, workload, and patient care	Data analysis and reporting.	Ongoing.
Adam Wood, PharmD	Review of Coral Snake Exposures Managed by the Florida Poison Information Center Network: 1998-2010	Data analyses and reporting.	Analyses completed.
Poison Center			
Rachel O'Geen, MD	Use of N-Acetylcysteine Therapy Beyond the 21-hour Intravenous Protocol for Acetaminophen Toxicity	Exploratory data analysis, statistical analysis, and draft findings.	Poster at North American Congress on Clinical Toxicology, Atlanta, 2013

Psychiatry			
Joan Sacerio, MD	Pressure Ulcers: Crisis of Prevention	IRB application, study design, data cleaning, data analysis, and statistical analysis.	Analyses completed.
Pulmonary and Critical Care			
Hammad Bhatti, MD	Efficacy of nebulized versus inhaled formoterol in patients with very severe COPD	Research design.	Analyses completed.
Ankur Girdhar, MD	Clinical Characteristics of Patients Developing Acute Pulmonary Embolism in an Inpatient Setting	Research design.	Analyses completed.
Tauseef Qureshi, MD	Baseline Characteristics of Pulmonary Arterial Hypertension Patients Who Require Combination Therapy	Data cleaning, exploratory data analysis, statistical analysis, draft findings, and reporting.	Analyses completed.
Vinny Samuel, MD	Prevalence of cocaine use in patients with intraparenchymal hemorrhage	Research design.	Ongoing.
Amita Singh, MD	Impact of inhaled epoprostenol on oxygenation in ARDS	Study design, study conduction, data cleaning, exploratory data analysis, statistical analysis, draft findings, and reporting.	Analyses completed.
Radiology			
Savas Ozdemir, MD	Correlation of the body mass index (BMI) and dose length product (DLP) on retrospectively EKG gated cardiac CTA.	Statistical analysis and reporting.	Analyses completed.
Sukhwinder Sandhu, MD	Repeat CT for motion	Data cleaning, exploratory analysis, and statistical analysis.	Analyses completed.
Surgery			
Constance Haan, MD	Comparison of Cardiac Monitoring Devices	Protocol development and experimental design, data analysis when data is collected.	Data is being collected, and will be written into manuscript.
Jilma Patrick, MD	Site of Initial Presentation Affects Cancer Outcome	Data cleaning, analysis, draft findings and reporting.	Abstract presented. Manuscript preparation ongoing.
Phillip Pirgousis, MD	Cephalometric measurements relating to facial reconstruction	Data cleaning and statistical analysis.	
Laila Samiiian, MD	Breast Cancer Disparities of Duval County	Protocol development and experimental design, data analysis, co-investigators.	Manuscript preparation is ongoing.
External Organizations			
Jonathan Neal	Fatigue Life of Acrylic Bone Cement: Effect of Mixer System and Takt Time	Protocol development and experimental design, data analysis when data is collected.	Ongoing.
Julie Wood	Medical Home for Homeless Children (MHHCP)	Data management, analysis, and design development.	Ongoing.



Center for Health Equity and Quality Research
University of Florida
College of Medicine-Jacksonville
580 West 8th Street, Tower II
Suite 6015
Jacksonville, FL 32209
<http://www.hscj.ufl.edu/cheqr/>