

Your Name: _____

Hurricane Strike!

Science Worksheet 2

Watch the Weather Channel news flash (on the Castillos' TV) and look in *Storm Track* (on the Castillos' laptop computer) to answer questions 1–3:

1. Where was Hurricane Erin at 8:00 PM on Monday, July 31st? (*Fill in the blanks with latitude and longitude numbers and circle N, S, E, or W for each. If you have a tracking chart, plot the location.*)

Latitude: ____ . ____ N S E W Longitude: ____ . ____ N S E W

2. Hurricane Erin is moving at about 15 kilometers per hour and is approximately 600 kilometers away from Florida. If it continues to move at the same speed toward the Florida coast, how many hours will it take before the eye makes landfall? (*Circle one.*)

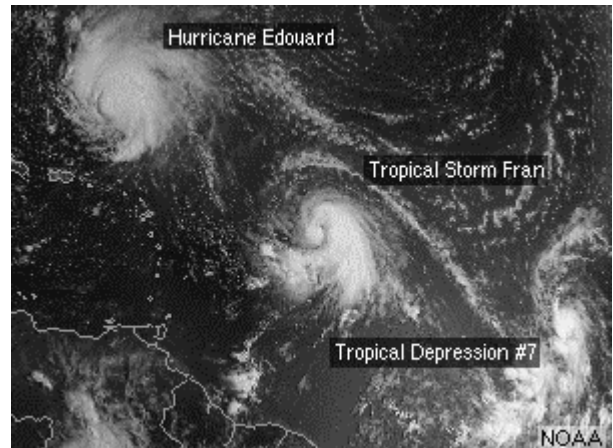
6 hours 10 hours 40 hours 412 hours

3. If Hurricane Erin travels at a speed of 16 kilometers per hour (kph) for 12 hours, 15 kph for 3 hours, and 19 kph for 9 hours, how far will it have traveled in the 24-hour period?

_____ kilometers

Look in *Hurricanes & Tropical Cyclones* and *Create-A-Cane* to answer questions 4–7:

This satellite picture shows three storms, Hurricane Edouard, Tropical Storm Fran, and Tropical Depression #7. What can you say about these three storms?



4. Tropical Depression #7 has stronger winds than Tropical Storm Fran. (*Circle one.*)

TRUE

FALSE

Can't tell from the picture

5. What is the highest wind speed possible in Tropical Depression #7? (*Circle one.*)

38 kilometers per hour

62 kilometers per hour

100 kilometers per hour

119 kilometers per hour

6. According to the Beaufort Scale, Tropical Storm Fran's winds are at least strong enough to...
(Circle one.)

Knock down power lines

Make small leafy trees sway

Break twigs off trees

Knock down medium-sized trees

7. What ingredients were necessary before Tropical Storm Fran (in the picture) could form?
(Check all that apply.)

- Cold sea temperatures
- Warm sea temperatures of at least 26.5°C or warmer
- A very dry atmosphere
- Strong whirling winds
- A strong jet stream blowing right over the storm area
- Light winds from similar directions above the storm area
- Plenty of moisture at low and middle levels of the atmosphere
- A tropical disturbance or group of tropical thunderstorms

Click on Hugo the dog and have dinner with the Castillo family to answer questions 8-10:

8. What should every family have to help them find each other if they are separated during an evacuation or emergency? (Circle one.)

A friend or relative in a safe location that everyone can call

A solar-powered portable radio

An evacuation plan

Directions to the nearest emergency shelter

9. What should you do if you see a serious injury or fire during an emergency? (Circle one.)

Call 911

Run away

Wait until the storm passes, then call 911

10. Which people usually have to evacuate during a hurricane? (Circle **TWO**.)

People in mobile homes

People in the path of tornadoes

People in possible flood zones

People in the high wind area