

Subject: Issue with RichFaces 3.0 and Apache server

From: "Sagi, Kiran" <c_kirans@qualcomm.com>

Date: Mon, 21 May 2007 15:06:27 -0700

To: <devsupport@exadel.com>

CC: "John Erdiakoff" <jerdiakoff@exadel.com>, "Sacco, Lou" <lsacco@qualcomm.com>, "Rich, Ryan" <rrich@qualcomm.com>

Hi Max,

We are currently using the Rich Faces 3.0 in our application. Everything seems to be working fine when deployed in tomcat.

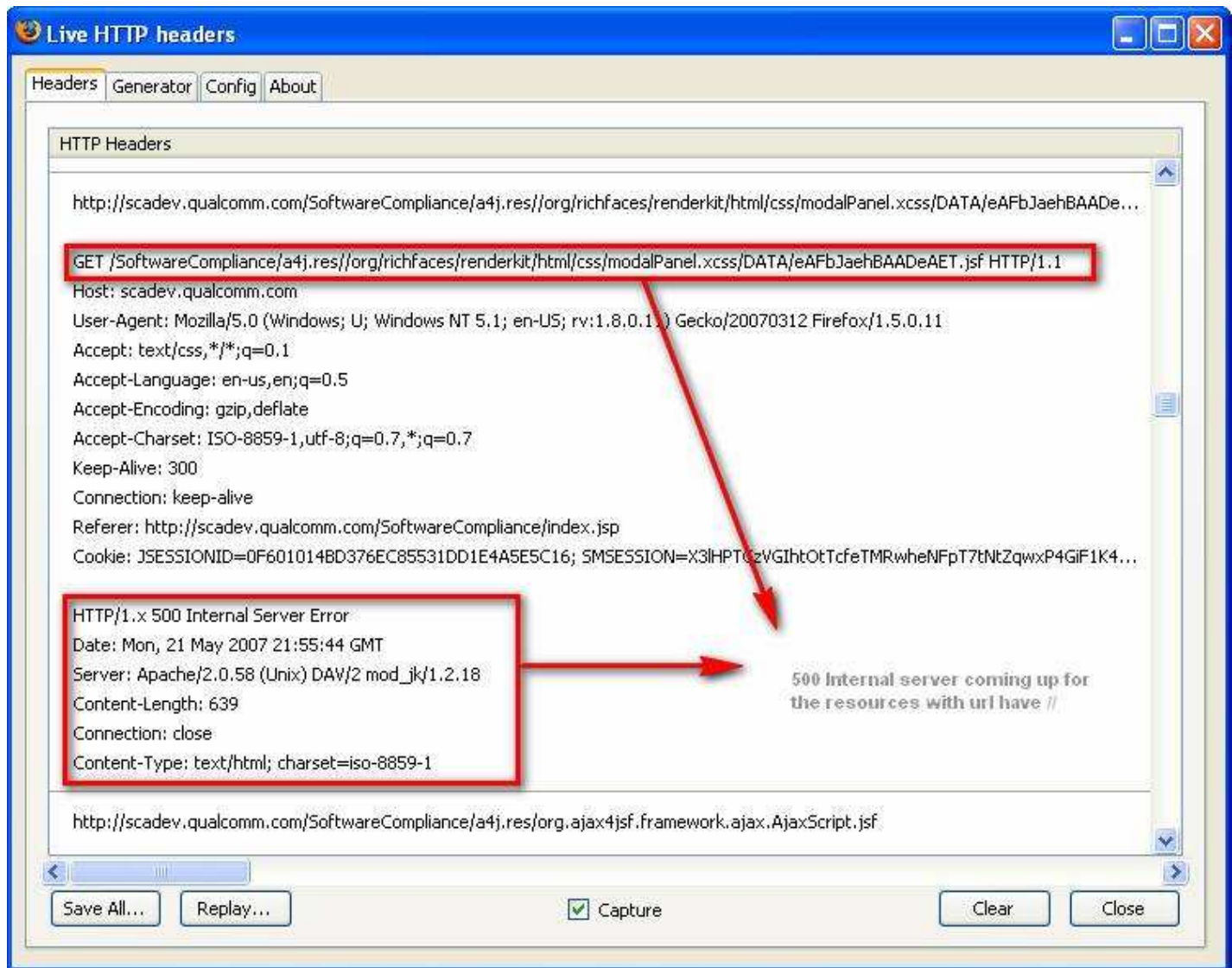
But we see some issues when the application is deployed in a tomcat that is behind an Apache web server. Below are the screen shots of the script errors we get –



In the page source we are seeing the below

```
<html xmlns="http://www.w3.org/1999/xhtml"><head><link type="text/css" rel="stylesheet" href='
</script><script type="text/javascript" src="/SoftwareCompliance/a4j.res/org.ajax4jsf.framework
</script><script type="text/javascript" src="/SoftwareCompliance/a4j.res/org.ajax4jsf.framework
</script><script type="text/javascript" src="/SoftwareCompliance/a4j.res/org/richfaces/render
</script><script type="text/javascript" src="/SoftwareCompliance/a4j.res/org/ajax4jsf/render
</script><script type="text/javascript" src="/SoftwareCompliance/a4j.res/scripts/tabPanel.js.
</script><script type="text/javascript" src="/SoftwareCompliance/a4j.res/org/richfaces/render
</script><script type="text/javascript" src="/SoftwareCompliance/a4j.res/org/richfaces/render
</script><script type="text/javascript" src="/SoftwareCompliance/a4j.res/org/richfaces/render
</script><link rel="stylesheet" type="text/css" href="/SoftwareCompliance/resources/css/sc.css
```

We were wondering whether apache was blocking the resources with these types of urls. Below is the screen shot of the Live Http Headers for the request?



Attached are the xhtml files where the modal panel is used.

Please let us know the resolution to this problem. Thanks in advance.

Regards,
Kiran C Sagi.

RF3SCAPP.zip	Content-Type: application/x-zip-compressed
---------------------	---------------------------------------------------