

DREXEL UNIVERSITY &
UNIVERSITY OF PITTSBURGH



Centre County

Report of the Cross-Systems Mapping Workshop

April 15th & 16th, 2015

Transforming Services
for Persons with Mental Illness in
Contact with the Criminal Justice System

Facilitator

Patricia A. Griffin, PhD, Center of Excellence Senior Consultant

Other Support

Carol Schubert, MPH, Center of Excellence Senior Consultant
Katy Winckworth-Prejsnar, MPH, Center of Excellence Project Coordinator
Shervin Bazmi, MS, Center of Excellence Research Specialist

Center of Excellence Staff

Shervin Bazmi, MS
David DeMatteo, JD, PhD
Sarah Filone, MA
Patricia Griffin, PhD
Kirk Heilbrun, PhD
Casey LaDuke, MS
Edward P. Mulvey, PhD
Carol Schubert, MPH
Katy Winckworth-Prejsnar, MPH



Table of Contents

Transforming Services for Persons with Mental Illness in Contact With the Criminal Justice System

Introduction	5
Background	5
About the Workshop.....	6
Objectives of the Cross-Systems Mapping Exercise	6
Keys to Success.....	7

Centre County, Pennsylvania Cross Systems Mapping

Centre County Cross Systems Map.....	9
Centre County Cross Systems Narrative	10
Intercept I: Law Enforcement / Emergency Services.....	13
Intercept II: Initial Detention / Initial Court Hearing	21
Intercept III: Jails / Courts	25
Intercept IV: Re-Entry.....	30
Intercept V: Community Corrections / Community Support	34

Centre County Action Planning

Centre County Priorities	41
Centre County Action Plan.....	42

Conclusions and Summary

Conclusion	54
Closing	54

List of Appendices

Appendix A – Participant List	55
Appendix B – Centre Cross Systems Mapping: Follow-Up Resources	62
Appendix C – CCCF Data Collection	64
Appendix D – CIT Data Collection	66
Appendix E – CCCF Program Schedule	71
Appendix F – PA State Probation and Parole Statistics	74
Appendix G – Veteran Reentry Search Service (VRSS) Quick Start Guide	75

Centre County, Pennsylvania

Transforming Services for Persons with Mental Illness in Contact with the Criminal Justice System

Introduction

The purpose of this report is to provide a summary of the Pennsylvania Mental Health and Justice Center of Excellence *Cross-Systems Mapping* workshop held in Centre County, Pennsylvania, on April 15th – 16th, 2015. The Centre County Criminal Justice Advisory Board (CJAB) hosted the workshop as part of an ongoing process of developing collaborative systems of support for individuals who have mental illness and who come in contact with criminal justice. This report (and accompanying electronic file) includes:

- A brief review of the origins and background for the workshop;
- A summary of the information gathered at the workshop;
- A cross-systems intercept map as developed by the group during the workshop;
- A description of each intercept along with identified gaps and opportunities;
- An action planning matrix as developed by the group; and
- Observations, comments, and recommendations to help Centre County achieve its goals.

Background

The Centre County Criminal Justice Advisory Board (CJAB) and multiple other stakeholders requested the Center of Excellence *Cross-Systems Mapping* workshop to promote progress in addressing criminal justice diversion and treatment needs of adults with mental illness in contact with the criminal justice system. As part of the workshop, the Center of Excellence was requested to provide assistance to Centre County with:

- Creation of a map indicating points of interface among all relevant Centre County systems;
- Identification of resources, gaps, and barriers in the existing systems; and
- Development of priorities to promote progress in addressing the criminal justice diversion and treatment needs of adults with mental illness in contact with the criminal justice system.

Prior to the workshops, the Center of Excellence gathered information about Centre County through a *Community Collaboration Questionnaire* and gathering of documents and data relevant to the target population.

The participants in the workshops included 42 individuals representing multiple stakeholder systems including mental health, substance abuse treatment, human services, corrections, advocates, family members, consumers, law enforcement, and the courts. A complete list of participants is available in **Appendix A** of this document. Patricia A. Griffin, PhD, facilitated the workshop sessions. Carol Schubert, MPH, Shervin Bazmi, MS, and Katy Winckworth-Prejsnar, MPH, also provided support.

County specific follow-up resources, discussed during the mapping, can be found in **Appendix B**.

About the Workshop

Upon receiving a grant from the Pennsylvania Commission on Crime and Delinquency and the Pennsylvania Department of Public Welfare's Office of Mental Health and Substance Abuse Services in late 2009, the Pennsylvania Mental Health and Justice Center of Excellence was developed as a collaborative effort by Drexel University and the University of Pittsburgh. The mission of the Center of Excellence is to work with Pennsylvania communities to identify points of interception at which action can be taken to prevent individuals with mental illness from entering and penetrating deeper into the justice system.

The Center of Excellence workshops, *Cross-System Mapping* and *Taking Action for Change*, are unique services tailored to each Pennsylvania community. These workshops provide an opportunity for participants to visualize how mental health, substance abuse, and other human services intersect with the criminal justice system.

This workshop is unlike other types of consultations or staff development training programs. A key element is the collaborative process. Meaningful cross-system collaboration is required to establish effective and efficient services for people with mental illness and co-occurring substance use disorders involved in the criminal justice system. This makes the composition of the group extremely important. While some workshops involve advertising to the entire provider community, it is essential in the *Cross-System Mapping* workshops that the organizers gather a group that represents key decision makers and varied levels of staff from the relevant provider systems. Center of Excellence staff work with this group, serving as expert guides to help:

- Create a cross-systems map indicating points of interface among all relevant local systems;
- Identify gaps, opportunities, and barriers in the existing systems;
- Optimize use of local resources;
- Identify and prioritize necessary actions for change; and
- Develop an action plan to facilitate this change.

Upon completion of the workshops, the Cross-Systems Map included in the report is provided in both print and electronic formats. It is meant to be a starting point. The electronic files can be revised over time to reflect the accomplishments and changes in the planning process.

Objectives of the Cross-Systems Mapping Exercise

The *Cross-Systems Mapping Exercise* has three primary objectives:

1. Development of a comprehensive picture of how people with mental illness and co-occurring substance use disorders move through the Centre County criminal justice system along five distinct intercept points: Law Enforcement and Emergency Services, Initial Detention/Initial Court Hearings, Jails and Courts, Re-entry, and Community Corrections/Community Support.
2. Identification of gaps, resources, and opportunities at each intercept for individuals in the target population.
3. Development of priorities for activities designed to improve system and service level responses for individuals in the target population.

Keys to Success

Existing Cross-Systems Partnerships

Centre County's history of collaboration between the criminal justice and behavioral health systems is reflected in a number of existing local efforts that were identified prior to the mapping. For example:

- Centre County Criminal Justice Advisory Board (CJAB)
- Crisis Intervention Team
- As part of a Reentry Planning Project, a Reentry Coalition was created in the summer of 2014 and continues to meet as a committee of the CJAB. The coalition is chaired by Commissioner Michael Pipe and has representatives from various organizations.
- A Mentally Ill Offender Housing Needs Assessment by Diana T. Myers & Associates was completed in 2010 and has led to more emphasis on the offender population with mental illness especially at the county correctional facility.

Consumer/Family Involvement in the Workshops

- Three consumers participated in the workshop and added valuable information to the discussion, especially on the importance of DUI Court and peer support throughout the sequential intercept model.
- Two family members of consumers also attended the workshop and shared their family perspective and experiences with barriers they faced in the behavioral health and legal systems.

Representation from Key Decision Makers in the Workshops

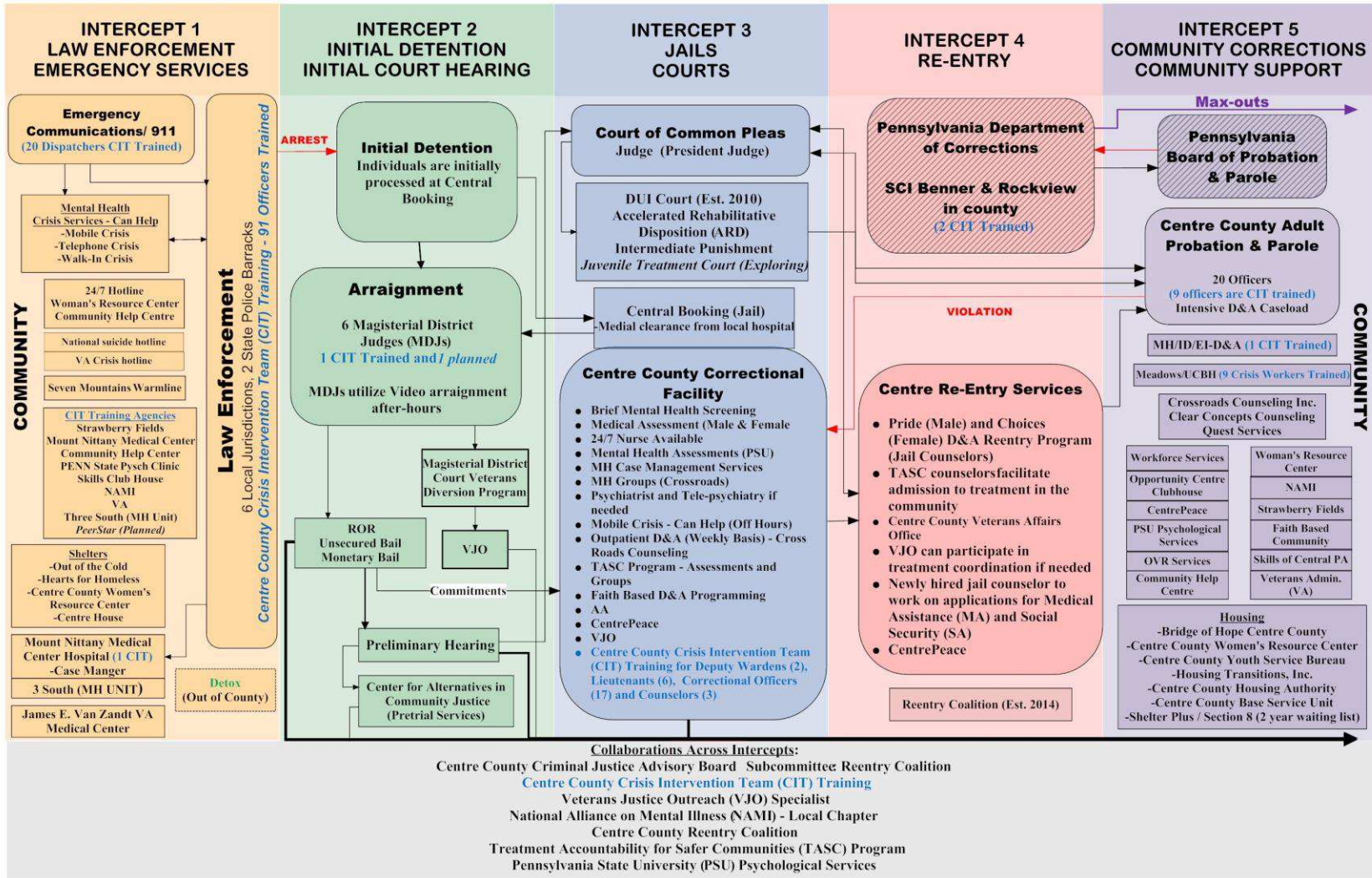
- The workshops included wide cross-system representation and involved many of the key decision makers. Opening remarks by Commissioner Michael Pipe and the Honorable Bradley Lunsford set the stage and established a clear message as to the importance of the workshop.

Data Collection

- In addition to the information gained during the workshop, the information in this report was developed from conversations with and questionnaires completed by key stakeholders in Centre County in preparation for the workshop.
- Additionally, the county spent considerable effort collecting data on serious mental illness (SMI) admissions to the local jail (Please see **Appendix C** for more information).
- The current report includes this information, as well as information provided on organization websites and key documents for Centre County.
- The Pennsylvania Commission on Crime and Delinquency (PCCD) in collaboration with the Pennsylvania State Data Center at Penn State Harrisburg secured federal Statistical Justice

System funding from the Bureau of Justice Statistics to implement a digital dashboard system. The dashboards track key metrics from the county justice system including: prison indicators, courts indicators, juvenile indicators, probation/parole indicators, law enforcement indicators. Some information presented in this report was obtained from the PCCD digital dashboard system. For more information or to access the digital dashboard, please see <http://www.pacjabdash.net/>

Centre County Cross Systems Map



Centre County Cross Systems Narrative

The *Cross-Systems Mapping* exercise is based on the Sequential Intercept Model developed by Mark Munetz, M.D. and Patty Griffin, Ph.D.,¹ in conjunction with the National GAINS Center. In this workshop, participants were guided to identify gaps in services, resources, and opportunities at each of the five distinct intercept points.

This narrative reflects information gathered during the *Cross-Systems Mapping Workshop*. It provides a description of local activities at each intercept point, as well as gaps and opportunities identified at each point. This narrative may be used as a reference in reviewing the Centre County Cross-Systems Map. The cross-systems local task force may choose to revise or expand information gathered in the activity.

The gaps and opportunities identified in this report are the result of “brain storming” during the workshop and include a broad range of input from workshop participants. These points reflect a variety of stakeholder opinions and are, therefore, subjective rather than a majority consensus.

General Description of Services and Cross-System Collaboration

As of the 2010 census, the population of Centre County was 153,990. Its county seat is Bellefonte. The county has a total area of 1,113 square miles (2,880 km²), of which 1,110 square miles (2,900 km²) is land and 3.0 square miles (7.8 km²) (0.3%) is water. It is the fifth-largest county in Pennsylvania by area.

The County has been building a continuum of criminal justice and mental/behavioral health services that provide a basic foundation for continued growth and reorganization on all levels. There are a number of established links, both formal and informal, between the courts, probation, police departments, corrections and the mental health system that include, including but not limited to:

- Crisis Intervention Team (CIT) Training
 - A Crisis Intervention Team Program was created in 2010 and, as of 1/31/2015, a total of 187 individuals have been CIT certified. This number includes county correctional officers, law enforcement officers, probation officers, and first responders.

Centre County Mental Health/Intellectual Disabilities/Early Intervention & Drug and Alcohol (MH/ID/EI-D&A)

Centre County Mental Health/Intellectual Disabilities/Early Intervention – Drug & Alcohol provides assessment, referral, and case management services to individuals with a qualifying diagnosis (i.e. a serious mental illness, an intellectual disability, a child birth to age three with a developmental delay, and individuals with a substance use disorder). All services are designed to support consumers and families, eliminate stigma, and to facilitate independence and inclusion.

¹ Munetz, M. & Griffin, P. (2006). A systemic approach to the de-criminalization of people with serious mental illness: The Sequential Intercept Model. *Psychiatric Services*, 57, 544-549.

Community Care Behavioral Health Organization (Managed Care Organization)

Community Care is a recovery-focused nonprofit behavioral health managed care company. It manages mental health and drug and alcohol treatment services for about 700,000 members of the HealthChoices program (a Pennsylvania program for people covered by Medical Assistance) in 36 counties. Members can call Community Care for more information for a mental health condition, an alcohol problem or a drug problem. Community Care is dedicated to the health and well-being of members. Members are actively involved in program development and quality improvement activities.

Criminal Justice Planning Department

The Criminal Justice Planning Department was formed from the existing Intermediate Punishment Department in September 1999. The creation of the Criminal Justice Planning Department reflected a new emphasis on system wide criminal justice activities within the county going beyond the alternative sentencing activities previously handled by the Intermediate Punishment Department. In addition to program development and monitoring, the department is responsible for scheduling and coordinating monthly meetings of the Centre County Criminal Justice Advisory Board and providing support services to the Board and its committees.

The Criminal Justice Planning Department maintains a close working relationship with the Court, Probation Department, District Attorney, County Correctional Facility and other county offices with regard to criminal justice issues. The department serves as a liaison among county offices and other criminal justice agencies within the county, and is the primary point of contact with the Pennsylvania Commission on Crime and Delinquency.

In addition to program development and monitoring, the CJ Planning Department collects data and prepares reports on a variety of criminal justice activities within the county. The department maintains information on Supervised Bail and Intermediate Punishment Programs (which include In Home Detention, Inpatient Drug/Alcohol Treatment, and Intensive Supervision). The program also collects data on jail use and jail populations, the number and types of criminal cases filed, and other related criminal justice activities.

Centre County Board of Commissioners

The Board of Commissioners is the chief governing body of Centre County. The commissioners are elected every four years by the citizens of Centre County. The 2012-2015 Board of Commissioners is comprised of Chairman Steven G. Dershem, Vice-Chairman C. Chris Exarchos and Michael Pipe. Their statutory authority is primarily of an administrative nature and is set forth in the County Code of the Commonwealth of Pennsylvania as well as other legislation, adopted by the Pennsylvania General Assembly. The Commissioners appoint personnel, supervise County offices and programs, and contract, on behalf of the County, in a variety of program areas.

As the fiscal managers of the County, the Commissioners are responsible for developing and adopting the annual budget, property assessment, levying of taxes, and as necessary, the borrowing of funds for construction of capital projects. They are involved in various countywide initiatives from such matters as increasing economic development to monitoring the efficiency and effectiveness of County provided programs and services.

They also serve on the Board of Assessment, Board of Elections, Salary Board, Retirement Board, Employees Benefit Trust, Criminal Justice Advisory Board and Prison Board (along with other County-elected officials), as well as serving on several human services boards.

Centre County has a detailed MH/ID/EI-D&A website for individuals, families and agencies concerned with behavioral health. It provides information about behavioral health services, laws, and related news, as well as communication tools and other features and is available at: <http://www.centrecountypa.gov/index.aspx?NID=329>.

Intercept I: Law Enforcement / Emergency Services

Emergency Communications & 9-1-1

The Centre County Commissioners established the county 9-1-1 / Emergency Communications Center in the Willowbank Office Building in Bellefonte, PA. The Communications Center began operations on June 1, 1994. All residents of Centre County have access to 9-1-1.

Centre County telecommunicators support law enforcement officers by providing a variety of services, 24-hour dispatching, continuous radio communications with officers on the street, computerized law enforcement information systems, and command post staffing. Currently, the Emergency Communications Center employs 16 full time 911 dispatchers.

Law Enforcement

Centre County is served by **6 municipal law enforcement districts** and **2 state police barracks** that provide law enforcement services for the entire county.

Municipal Law Enforcement Districts

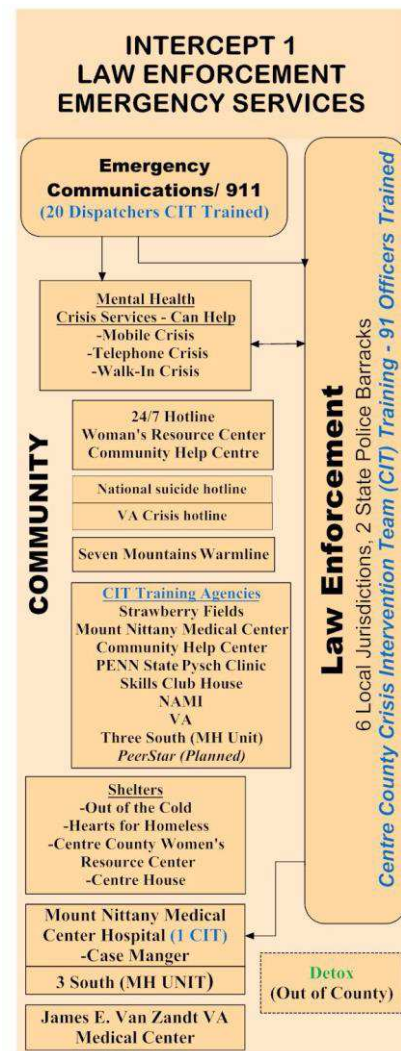
- **Bellefonte Borough Police Department**
236 W. Lamb Street, Bellefonte, PA 16823 | (814) 353-2320
- **Ferguson Township Police Department**
3147 Research Drive, State College, PA 16801 | (814) 237-1172
- **Patton Township Police Department**
100 Patton Plaza, State College, PA 16803 | (814) 234-0271
- **Penn State University Police Department**
20 Eisenhower Parking Deck University Park, PA 16802 | (814) 865-4700
- **Spring Township Police Department**
1309 Blanchard Street, Bellefonte, PA 16823 | (814) 355-5134
- **State College Borough Police Department**
243 South Allen Street, State College, PA 16801 | (814) 234-7150

For more information on Centre County police agencies, see

http://www.pacenterofexcellence.pitt.edu/counties/centre/lawEnforcement_centre.html

State Police

The Pennsylvania State Police was created by an act of the legislation, signed into law by Governor Samuel W. Pennypacker on May 2, 1905. It was the first uniformed police organization of its kind in the United States. The Pennsylvania State Police has jurisdiction in all political subdivisions in the Commonwealth. Centre County is served by State Police Troop G, Philipsburg and Rockview Stations.



Centre County Crisis Intervention Team (CIT) Training

Starting in 2009, Centre County began the process of exploring opportunities to bring CIT to Centre County in response to limited collaboration between law enforcement and behavioral health services in the county. By 2010, the county established a team of eight individuals from a variety of agencies to receive CIT training from the Laurel Highlands CIT Program. The team received the training in April 2010. Upon returning to Centre County and with the assistance of a grant from PCCD, the team prepared and created the Centre County CIT program.

The first training was conducted in January 2011. Centre County received financial support through PCCD with a CJAB mini grant and the support of National Alliance of Mental Illness (NAMI). Centre County hired a CIT Coordinator in March 2011 with the financial support of a PCCD CJAB Initiative Grant and the cash match supported by local agencies.

A Centre County CIT Committee meets on a regular ongoing basis. This team oversees the planning and coordination of CIT Trainings and includes representatives from law enforcement, probation/parole, corrections, and first responders.

In addition to law enforcement departments, Centre County had provided CIT training to individuals at each stage of criminal justice processing, including: 911, EMT and other emergency responders, mobile crisis, MH/ID/EI-D&A, MDJs, Judges, Centre County Correctional Facility, DOC Rockview staff, Centre County Probation and Parole, and PA State Probation and Parole.

The 40-hour Centre County CIT training components typically include:

- **Monday:** Introductions, diagnosis, symptoms, community mental health resources, Can Help (mobile crisis), and medication side effects.
- **Tuesday:** Introduction to substance abuse and co-occurring disorders, site visit to Opportunity Centre Clubhouse, Strawberry Fields, and the Fairweather Lodge.
- **Wednesday:** Family perspectives (NAMI and others), consumer perspectives, additional community resources, Penn State Psychological Clinic, Office of Aging, MH/ID/EI –D&A, and crisis de-escalation.
- **Thursday:** Veteran specific mental health (PTSD, brain injury, military culture), Veterans panel, Magisterial District Court Veterans Diversion Program, legal aspects (i.e. rights, civil commitment laws), site visit to the ER/ Three South (MH Unit), and role-playing.
- **Friday:** Advanced role-playing, suicide by cop, suicide delirium, advanced verbal de-escalation skills, CIT protocol, and graduation.

Recently, the Municipal Police Officers' Education & Training Commission (MPOETC) went through Centre County CIT training because they are exploring the possibility of incorporating CIT elements into their police academy training.

To date, 187 individuals have been trained in Centre County CIT. For statistics on number of CIT trained and additional data tracking information please see **Appendix D**.

Crisis/Emergency Services

Telephone/mobile/walk-in crisis intervention services are provided through a collaboration with Centre County MH/ID/EI and Centre County Can Help. **Centre County Can Help** is actively involved with the Crisis Intervention Team and police alliance, American Foundation for Suicide Prevention – Out of the Darkness Walk; Geriatric Depression Screenings, Health and Human Services Council, and Community Support Program. In addition to DCORT, Can Help

Counselors are available to offer brief grief support and crisis debriefings and offers follow up to individuals who have been hospitalized to promote their recovery and reduce the risk of suicide.

Centre County Can Help Mobile crisis is delivered individually by request of law enforcement, case management, family members, or the individual. The crisis team will go wherever is needed to deliver mobile services that include an evaluation, resources guidance, or to assist with the commitment process. Law enforcement can call Can Help directly or mobile crisis might call law enforcement for backup.

Centre County Can Help is the D&A information and referral line and provides support to individuals in recovery. They also provide drug and alcohol (D&A) hotline services for Centre County. Can Help has the ability to serve not only clients with D&A issues, but also those with co-occurring disorders who need mental health services. In addition, Can Help coordinates after hours detoxification requests through the mental health delegates using the guidelines established by Centre County Drug and Alcohol.

Can Help also provides mobile crisis intervention services for individuals who may be having a mental health crisis. This support is available to anyone in Centre County. Centre County Can Help also provides follow-up services for individuals using the hotline or mobile crisis intervention. Can Help is available at 1-800-643-5432, 24 hours a day, seven days a week.

Additional 24-Hour Hotlines

- Centre County Women's Resource Center – Provides specialized services to victims of domestic and/or sexual violence. 1-877-234-5050 toll-free / 814-234-5050
- Community Help Centre – Provides short-term counseling and crisis support. 1-800-494-2500 toll-free / 814-237-5855
- VA Veterans Crisis Line – Connects Veterans in crisis and their families and friends with qualified, caring Department of Veterans Affairs responders through a confidential toll-free hotline. 1-800-273-8255 and Press 1

Mount Nittany Health System

The Mount Nittany Medical Center's Behavioral Health Unit consists of a 12-bed unit located on the third floor of the Medical Center providing short-term, inpatient care for adults in acute mental health crisis. Led by a medical director certified in psychiatry by the American Board of Psychiatry and Neurology, the unit employs licensed psychiatric social workers, a certified recreation therapist, counselors and registered nurses.

Patients come to Behavioral Health Unit one of two ways: through the Emergency Department or by referrals from a mental health professional. All patients must go through the emergency department first for a physical health analysis before being admitted to the Behavioral Health Services unit.

Individuals with drug and alcohol issues may be evaluated for medical needs by the Emergency Department if they are experiencing detoxification symptoms. Those at significant medical risk may be admitted for medical treatment. Individuals with mental health concerns may be evaluated for admission to the Behavioral Health Services unit to be treated for those mental health needs prior to being referred for further drug and alcohol treatment. If the person is medically stable, they can be referred the Drug and Alcohol Office during the business day for assessment and referral to treatment, or to Centre County Can Help for after-hours emergency detoxification admissions (phone call arrangements only).

The Meadows Psychiatric Center

The Meadows is a 105-bed acute inpatient psychiatric facility for children age four through older adults. The Assessment and Referral Center is staffed 24/7 by intake counselors who can evaluate individual needs and provide assistance at no cost to the individual. Patients who require emergency admission are served in separate units according to age: Children, Adolescent, Adult, and Adult Stabilization Units. Units are staffed 24/7 with nursing and mental health technicians to meet patient needs. Discharge is coordinated with continuing care providers and taps into a person's support system to promote mental health wellness and recovery.

Veterans Services

Centre County is served by the **James E. Van Zandt VA Medical Center** (<http://www.altoona.va.gov/>), located at 2907 Pleasant Valley Blvd. in Altoona (Phone: 877-626-2500). Additionally, a VA Outpatient Clinic is located in State College. Individuals can also reach the VA toll-free at 1-877-222-VETS (8387) between 8:00 AM and 8:00 PM ET, Monday-Friday.

The James E. Van Zandt VA Medical Center has a **Veterans Justice Outreach (VJO) Specialist**, Melinda Shea, to coordinate diversion services for veterans in the criminal justice system (Please see **Appendix A** for contact information).

There is also a Veterans Multi-Service Center located at 233 Easterly Parkway Suite 103, State College, PA 16801. This center provides a comprehensive range of services to low income veterans and their families who are experiencing physical problems and/or behavioral health issues.

For more information on the Veterans Justice Outreach Initiative and the Veterans Health Administration (VHA), please see Guide 7 – "Information Sheet on Justice-Involved Veterans for Judicial System" located in the Resource Guide Document (<http://www.pacenterofexcellence.pitt.edu/documents/COE%20Resource%20Guide%20Template%206-14-13%20%20REVISED.pdf>)

The Centre County Veterans Affairs Office answers both specific and general questions by veterans, dependents, and the general public regarding matters related to veterans. In addition, the office discusses and submits applications for all related benefits to which veterans and their dependents may be entitled, such as: compensation and pension, hospitalization and outpatient care, education, home loans, insurance, special housing and automobile grants, and numerous other benefits that are provided by the VA or other federal, state, county, or local agencies or organizations. This department also refers the County's veterans and dependents to other federal, state, county, or other agencies and organizations that might further assist them in solving their problems or answering their questions. For more information, see <http://www.centrecountyva.gov/Index.aspx?NID=351>.

Emergency Shelters

- Centre County Women's Resource Center - 1-877-234-5050
- Centre County Youth Service Bureau (Adolescents only) - 814-234-2100
- Housing Transitions, Inc. (Centre House) - 814-237-5508 (Maximum capacity is 16)
- Out of the Cold: Centre - 1-800-494-2500
- Hearts for Homeless (Daytime shelter) - 814-325-9471

Victims Services

The Pennsylvania Commission on Crime and Delinquency's Victim Resources website provides the following victim services resources for Centre County. Further information can be found at: http://pcv.pccd.pa.gov/available-services/Pages/Interactive-Map.aspx#.VTU9_WS6foC

Victim Service Program	Services Provided	Street Address	Telephone/Email
Centre County Victim Witness Office	Advocacy, Case Status, Counseling, Court Accompaniment, Courtroom Orientation, Crisis Intervention, Escape Notification, Restitution, Support Groups, Victim Compensation Assistance, Victim Impact Statements, Victim Rights Notification Courthouse Canine Program	Centre County Courthouse, Room 404 102 S. Allegheny Street Bellefonte Pennsylvania, 16823	814-548-1107
Centre County Women's Resource Center, Inc.	Advocacy, Assistance Filing Compensation Claims, Counseling, Crisis Intervention, Emergency Financial Assistance, Information & Referral, Interpreter Service, Language Line, Shelter/Safe House, Support Groups, TTY Capabilities	140 West Nittany Avenue State College Pennsylvania, 16801-4811	814-234-5050 edteam@ccwrc.org
MADD - Northeastern Affiliate Office	Advocacy, Assistance Filing Compensation Claims, Counseling, Information & Referral	1216 Carbon Street Reading Pennsylvania, 19601	610-372-6233 maddnorthcentralpa@verizon.net

In addition, Centre County residents have access to the following resources:

PA Coalition Against Domestic Violence 6400 Flank Drive, Ste. 1300 Harrisburg, PA 17112	daytime: 800-932-4632 website: www.pcadv.org
PA Coalition Against Rape 125 North Enola Drive Enola, PA 17025	daytime: 717-728-9740 24 hour hot line: 888-772-PCAR website: www.pcar.org
PCCD Victims Compensation Program 3101 N. Front Street	daytime: 717-783-5153

Harrisburg, PA 17108	800-233-2339 website: www.pccd.state.pa.us
MADD, PA State Office 2323 Patton Road Harrisburg, PA 17112	daytime: 717-657-3911 24 hour hotline: 866-439-6233 (Pittsburgh) 800-848-6233 (Harrisburg) website: www.maddpa.org

The gaps and opportunities identified in this report are the result of “brain storming” during the workshop and include a broad range of input from workshop participants. These points reflect a variety of stakeholder opinions and, therefore, do not necessarily reflect a majority consensus.

Identified Gaps	Identified Opportunities
<ul style="list-style-type: none"> ❖ Centre County has only limited Forensic Certified Peer Specialist Services through Nulton Diagnostic which contracts with Community Care ❖ High 911 dispatcher turnover over the last year ❖ Grant funding for CIT coordinator position ends March 2016 ❖ Decline in the frequency of law enforcement (LE) officers contacting Can Help Mobile Crisis - taking the individual directly to the emergency room (ER) ❖ 22% of all CIT calls are PSU students and a majority of those are suicide related ❖ Mobile Crisis is not always contacted when a LE officer brings someone with mental illness (MI) into the ER – ER Doctors knowledge of mental illness (MI) varies ❖ Need a streamlined process to foster communication between Can Help, ER staff, psych unit liaisons, and LE officers <ul style="list-style-type: none"> ○ Some duplication of services in hospital and sometimes communication is a concern (Who is involved varies based on the ER doctors) ❖ ER case managers (who cover all hospital population) are not specialized in MH and are not familiar with all specific MH procedures (i.e. 302s) ❖ To date the Hospital has only sent one security person to CIT training ❖ MH beds - There are a total of 12 MH beds out of a total of 260 total hospital beds - A county of this size would benefit from additional MH beds ❖ No detox units in the county <ul style="list-style-type: none"> ○ People who need detox can only 	<ul style="list-style-type: none"> ❖ Strawberry Fields, Inc. contracts with Centre County for certified peer specialists (CPSs) services. ❖ CIT training across intercepts ❖ Opportunity Centre Clubhouse is part of a site visit for CIT – officers are impressed by this resource and the “family atmosphere” ❖ 911 telecommunicators trained in CIT can assess the situation and request that CIT officers be dispatched if appropriate. ❖ Bringing in PeerStar to do 3 hrs. Hearing Voices training – the officers will receive a certificate after completion ❖ Case Manager in the ER (new position - hospital is funding) ❖ Security at the hospital is very good ❖ MH/ID/EI-D&A and hospital meet on a monthly basis to streamline the coordination and have periodic ad hoc meeting with administrators ❖ Meadow’s has two Mental Health First Aid (MHFA) trainers ❖ Per Crossroads representative (work in 10 counties); Centre County service coordination is “light-years” ahead of other counties ❖ All CIT data forms are passed onto Can Help for follow-up even when it isn’t requested ❖ Centre House will occasionally take in recently released inmates but has to be cautious about who they serve because they have children staying in the facility ❖ After meeting with county representatives the Hospital will be sending additional security personnel to CIT Training

<ul style="list-style-type: none">○ go to the ER○ Sometimes have to wait 2-5 days for a detox bed in a neighboring county (shortage of beds statewide)○ Centre House and Out-of-the-Cold don't accept people who are intoxicated or are actively using drugs❖ ER determination for admission to the hospital for detox depends on the person's behavior and/or the degree of the substance abuse❖ Gaps in education about D&A issues in the hospital (e.g. giving a recovering alcoholic a prescription for opiates)❖ Some individuals have very high Blood Alcohol Levels (BAC), or are using new drugs that D&A is not familiar with❖ Transient community in the county❖ From January 2015 through the end of May 2015, 56% of individuals seeking inpatient treatment from Centre County SCA report heroin or other opiates as their drug of choice❖ Women's Resource Center Shelter will receive calls about inmates being released who need a place to stay – they have to prioritize space to current domestic violence and sexual assault cases❖ Funding was lost for Warmline	
--	--

Intercept II: Initial Detention / Initial Court Hearing

Arrest and Initial Detention

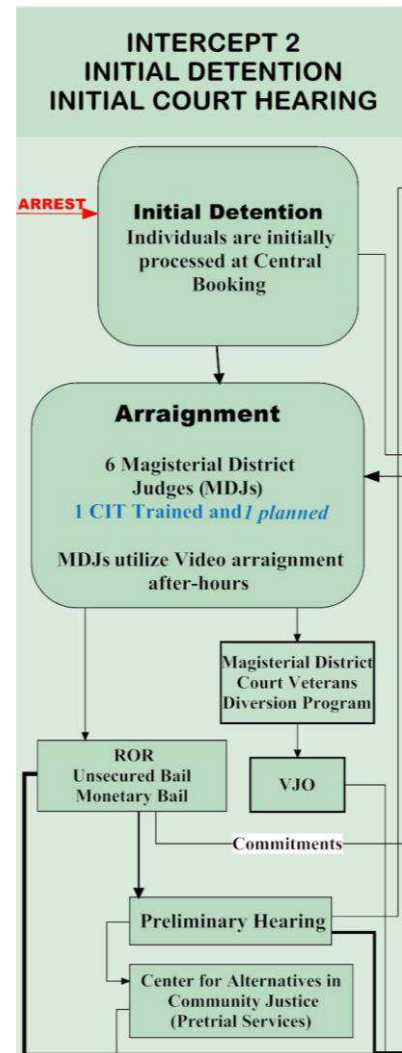
When an individual is arrested in Centre County by any of the municipal police departments, he/she is initially detained and processed at the **Central Booking Center (CBC)** located at the **Centre County Correctional Facility (CCCF)**. If an individual is intoxicated and/or under the influence of drugs the person must be cleared by the hospital before being processed by the CBC

Arraignment

The **49th Judicial District of Pennsylvania** has a compliment of six Magisterial District Courts within its boundaries, each overseen by an elected Magisterial District Judge (MDJ).

If arrested during daytime business hours, a defendant is brought to the local MDJ's office. If arrested during off-hours, the preliminary arraignment is completed with the MDJ on-call via videoconferencing at CBC.

Centre County has a **Magisterial District Court Veterans Diversion Program** for Veterans who have been charged with a summary offense involving alcohol or drug use. If accepted, veterans undergo an assessment and 1) must comply with the treatment plan developed by the Veterans Healthcare Administration, 2) abstain from drug and alcohol use, and 3) remain offense free while in the program. Upon successful completion of the program, veterans are eligible to have the original charges dismissed or reduced. The Veterans Justice Outreach (VJO) Specialist, Melinda Shea, checks for eligibility, coordinates services for the veterans, and sends reports to the MDJ on the veteran's progress every two weeks. Since the program began in late 2012, 10 individuals have successfully completed the program. For more information on the MDJ Courts, see <http://centrecountypa.gov/index.aspx?NID=358>



Center for Alternatives in Community Justice (CACJ)

CACJ began in 1976 as a grass roots effort by community citizens to address the problems faced by offenders re-entering the community. It was incorporated in 1978. The agency began collaborating with local judges, district justices, police, jail staff, attorneys and human services to design and implement programs in Centre County.

The CACJ is the Centre County Bail Agency, providing an alternative to incarceration for pretrial detainees charged with bailable offenses. Defendants can be placed on supervised bail by a Magisterial District Judge or a Judge of the Common Pleas Court. CACJ will interview the individual, as well as two other sources for verification and will then recommend to judge for placement or not. The CACJ has three types of release:

- 1) Released at time of arraignment;

2) CACJ makes recommendation which isn't acted on until the preliminary arraignment;
or

3) Released after the preliminary arraignment at a "bail modification hearing."

The person can be released on four different types of supervision (before preliminary hearing):

1) Regular (in touch three times per week, with one in-person);

2) Intensive (daily contact);

3) Supervision for people in contiguous counties (mostly phone contact); or

4) Courtesy supervision for anyone in the state if the other county has a pretrial unit.

All defendants will be required to abide by a standard set of conditions (see below) governing their release, as well as special conditions imposed by the court. Any violation of these conditions can result in a motion to revoke supervised bail. All defendants released will remain under supervision until their case is properly disposed of in the court system. Additionally, the Centre County Bail Agency receives a daily email from the CCCF with a list of daily commitments.

Conditions governing pretrial include:

- Maintaining regular contact with bail supervisor as directed, 3-7 times per week;
- Maintaining approved residence and receive permission for any move prior to the move;
- Complying with all criminal laws including the vehicle code, and the liquor code;
- Notifying CACJ of any arrest;
- Obtaining/maintaining employment;
- Remaining in Centre County unless given permission to travel out of the county;
- Abstaining from possession and use of controlled substances;
- Refraining from behavior that is dangerous to self or others;
- Attending all court appearances;
- Having no contact with victims or witnesses unless give permission by the court to have contact; and
- Abiding by any special conditions, which may be added by the court.

The Centre County Bail Agency is funded by CCCF (45%), the 49th Judicial District of Pennsylvania (45%), and a variety of sources (United Way, private donations, etc.).

Treatment Accountability for Safer Communities (TASC) Program

Centre County Single County Authority (SCA) has a long history of providing case management support for individuals who are involved with the criminal justice system. Through the Treatment Accountability for Safer Communities (TASC) program, two case managers are dedicated to conducting assessments, making referrals, and providing case management support to this target population. TASC staff members serve as liaisons between the treatment providers, the criminal justice system and the individual. Their extensive knowledge of both systems provides a needed resource for those who are new to the court system as well as the treatment system.

Outpatient and inpatient treatment services are both available to the above populations, based on the recommendations from the SCA/provider assessment and PCPC level of care. Block

grant funding under this plan is used for both outpatient and inpatient treatment services to these populations.

Centre County is fortunate to work with **Crossroads Counseling**, who in the last two years has secured its mental health clinic license in addition to its drug and alcohol clinic license. Crossroads is the only provider in Centre County to have both licenses in place. This serves as a good option for individuals who have co-occurring diagnoses.

Identified Gaps	Identified Opportunities
<ul style="list-style-type: none"> ❖ Arrest rates for state police have increased ❖ The Centre County Bail Agency does not gather information related to mental health 	<ul style="list-style-type: none"> ❖ Central Booking Center (CBC) <ul style="list-style-type: none"> ○ Can MH screening be done at Central Booking? ○ Can Data Link be used? ❖ Pretrial services in the county ❖ Video arraignment available during off-hours ❖ Veteran Diversion Court at the MDJ level ❖ Electronic veteran verification system to identify individuals in the criminal justice system can be expanded across intercepts ❖ Explore sharing daily jail commitments list with MH/ID ❖ The CCCF recently hired a 24/7 nurse through PrimeCare

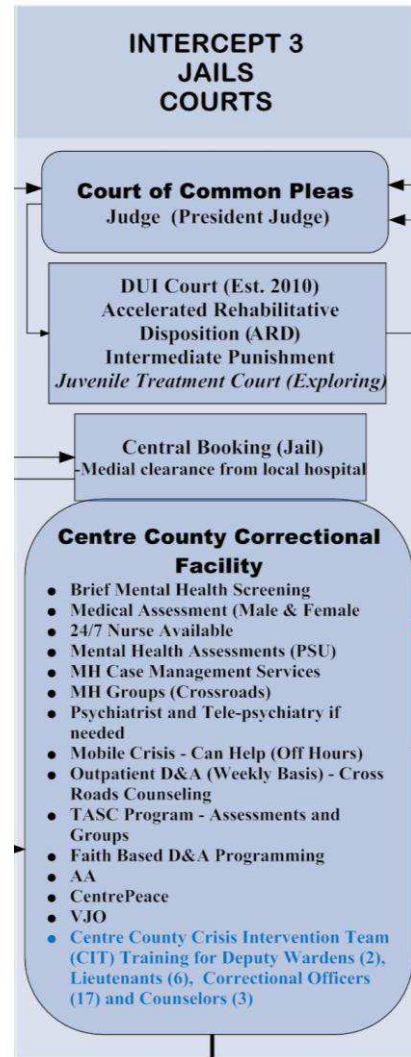
Intercept III: Jails / Courts

Centre County Correctional Facility (CCCF)

The Centre County Correctional Facility (CCCF) houses male and female pre-trial detainees and sentenced inmates up to one day less than five years. The CCCF also houses male and female state inmates and inmates from other counties on a contract basis, space permitting. According to the CCCF warden, roughly 35 to 38 percent of all inmates are on psychotropic medicine.

Classification

A **Brief Jail Screening** is conducted within 24 hours of admission to CCCF. The CCCF greatly enhanced the classification process in February of 2014 with the upgrade to a new Offender Management System. It was expanded from 54 questions to a 64 question classification with separate assessments related to mental health, substance abuse, and recidivism. This expansion allows for more questions to be asked, encourages more interaction between the counselor and the inmate, and allows for more specific data to be collected and evaluated. The classification process enhancement continues as a sub-committee of the Reentry Coalition studies the process and evaluates a change to evidence based risk and needs assessments. According to the new Offender Management System, from March 1, 2014 through February 28, 2015, 1,092 individuals (some duplicated/had one or more bookings) were committed to the Centre County Correctional Facility. Additionally, over the same time period 394 individuals were identified as having a mental health illness by jail booking staff. For additional information statistics, please see **Appendix C**.



MH and D&A Treatment

The county correctional facility gathers data during the initial inmate classification process and refers appropriate individuals to the **mental health case manager** at the facility. The CCCF contracts with **PrimeCare Medical, Inc.** for comprehensive medical and mental health care for the inmate population. This includes a Case Manager, a Psychiatrist, and a MSW Licensed Clinical Social Worker; along with 24 hour, 365 day per year coverage by Nursing Staff. The Health Care Administrator, Psychiatrist, Physician Licensed Social Worker, etc. are on call 24 hours per day, 365 days per year.

The MH/ID/D&A Office mental health case manager spends 50 percent of her time at the CCCF to refer and coordinate services. If there is an identified veteran in jail, the VJO provides in-reach into the jail to verify eligibility for services. Through referrals from the mental health case manager, the **Penn State Psychological Clinic** provides brief therapy services. The mental health case manager and the Penn State Psychological Clinic are available during the week to consult on cases.

Programing

Various programs are available to the inmate population based upon their classification that include: D&A treatment programs; MH treatment programs; Domestic Violence programs; Thinking For a Change; Jobs Skills; GED; Alcoholic Anonymous (AA) / Celebrate Recovery; and numerous religious classes.

Crossroads Counseling, Inc offers jail-based treatment services for both the mental health and substance use populations. Prior to release, they also arrange for a psychiatric and outpatient services appointment for the inmate.

CentrePeace promotes restorative justice to decrease victimization in the community by offering training and avenues to peace, healing, responsibility and accountability for offenders. CentrePeace provides several programs within the CCCF that include:

- The Criminal Justice Advocacy and Support Directory lists more than 300 organizations that provide services for victims of crime, inmates and families of those affected by crime. All CCCF units have this manual available to give to inmates. Can be accessed online at: <http://www.centrepeace.org/pdf/2013-2015%20CJASD%20Final%205.17.12.pdf>.
- Project Restore- Centre County inmates learn valuable job, time management and socialization skills through working at our *Used Household and Furniture Outlet Sale*. The inmate volunteers are also required to complete the classes "Creative Non-Violent Conflict Resolution" and "Breaking Barriers" in which they learn to appreciate others' points of view, assume responsibility for mistakes and identify and replace destructive patterns of behavior with positive ones.
- The Prayer-Mate program is a spiritual "pen- pal" system in which participants, using only their first names, communicate with community volunteers through a CentrePeace coordinator. Many inmates have credited the program with helping them develop a sense of re-connection to the community.
- CentrePeace organizes a Christmas Card Program, giving thousands of inmates an opportunity to be reminded of the love and hope symbolized by the Christmas season.

A complete list of all programming in the jail can be found in **Appendix E**.

Staff Training

All correctional officers at the CCCF receive in excess of 40 hours mandatory training per year with a significant portion of this training directly related to the care and management of mentally ill inmates and inmates with co-occurring disorders. Additionally, the county correctional facility currently has twenty-eight personnel who have been trained in CIT. This means that almost all shifts have someone who is CIT certified who can then respond to inmates who are experiencing a crisis.

In addition to having CIT certified personnel, CCCF staff also has access to and procedures for utilizing Centre County Can Help. This support is available to anyone in Centre County including individuals who are incarcerated or on probation/parole supervision.

Courts

The 49th **Judicial District Court of Common Pleas** is a trial court of general jurisdiction handling all civil and criminal matters. The 49th Judicial District comprises the geographical boundaries of Centre County and is served by a four-judge Judicial District (Honorable Thomas

Kistler, President Judge, Honorable Bradley P. Lunsford, Honorable Pamela A. Ruest, and Honorable Jonathan D. Grine).

DUI Court

The Centre County DUI Court Program provides intensive support and supervision to those DUI offenders who are at the highest risk of reoffending and have the highest need. The court was established in December of 2009 in response to the high rates of DUIs in the county (over 1,000 DUI related arrests per year). The target populations for this program include 3rd time DUI offenders (within the last 10 years), who had the highest tier blood alcohol level at the time of arrest, and 2nd time DUI offenders with the highest tier BAC, who were previously sentenced to Intermediate Punishment but are now facing a revocation. The DUI Court program provides support with regular judicial reviews, probation supervision, treatment (as identified by the Pennsylvania Client Placement Criteria), and case management support.

Since the court started, 60 individuals have come through the program and 31 people have graduated. Recently, PSU evaluated the DUI Court Program and the county expects to release the final report shortly.

Accelerated Rehabilitative Disposition (ARD)

The Centre County Court of Common Pleas typically utilizes the ARD program for first-time non-violent offenses, usually DUI cases. ARD is a pre-trial program designed to divert the least-dangerous defendants from additional court proceedings. The ARD program suspends the formal criminal prosecution before trial if the defendant agrees to certain conditions, such as completing substance abuse treatment. The district attorney approves who is accepted into the ARD program, and has considerable discretion when formulating policies or deciding which cases will be referred to the ARD program. Individuals who successfully complete the program may petition the court to have their charges dismissed and records expunged.

Intermediate Punishment (IP)

The Centre County Court of Common Pleas also utilizes several Intermediate Punishment (IP) sentences as alternatives to incarceration. These IP sentences include in-home detention (house arrest w/ electronic monitoring), work release, and in certain cases, residential treatment. The most widely used IP sentence is in-home detention.

Identified Gaps	Identified Opportunities
<ul style="list-style-type: none"> ❖ Most people that reoffend after ARD program are people that cannot afford the fees ❖ The Brief Jail Mental Health Screen is not sensitive to issues among females and those with anxiety disorders. It over-identifies mental health issues if the individual is intoxicated at the time of the screening ❖ Public Defender (PD) and District Attorney (DA) have limited choices for some of their clients (defendants and victims) - limited housing, jobs, transportation, D&A, BH issues etc. <ul style="list-style-type: none"> ○ Needs to be a team leader to coordinate all these aspects/someone to start the communication ❖ The county is not urban or rural enough for some grant opportunities ❖ Transient community makes it hard to evaluate/track the success of the ARD program ❖ Don't use Data Link in jail to share commitment list with MH/BH systems ❖ Psychiatrists in the community have different prescription practices than the jail – causes medicine changes for some consumers ❖ Don't have a Veterans Court at the Common Pleas level; CJ system doesn't know how many offenders are veterans ❖ Sustainability of funding for jail treatment services ❖ Need to figure out a process for helping people in jail who have short sentences ❖ Seeing more heroin and prescription pill abuse ❖ No MH Court (though there is an interest) 	<ul style="list-style-type: none"> ❖ High success rate for ARD – 90% do not come back to the criminal justice system ❖ Number of DUIs in Centre county (center region, not more rural areas) are going down, might be attributed (in some part) to DUI Court ❖ The jail has a data system that other agencies (MH/ID/EI-D&A) can access ❖ Communication between the jail and MH/ID/EI-D&A is strong ❖ Explore expanding Data Link between jail and behavioral health ❖ At classification in the jail the counselor is asking about veteran status ❖ The MDJ office in Phillipsburg has video capacity – something to explore further to address transportation limitations ❖ Jail MH screening: commitment list goes to CACJ for supervised bail consideration. ❖ Could the commitment list also be sent to MH/ID/EI-D&A Office? ❖ There's a computerized medical info system in jail that MH/ID/EI-D&A office can access ❖ Medical assessment includes MH assessment (separate one for men and women) ❖ Second Chance Act grant funding opportunities – target people with co-occurring disorders ❖ NIMH grant funding opportunities for MH/DA services in jail – would need to partner with researchers ❖ Could start using/partnering with the PSU criminal justice program <ul style="list-style-type: none"> ○ Maybe students could do evaluations, data collection, etc. ❖ Exploring a Juvenile D&A Treatment specialty court ❖ Criminal Justice Advocate and Support Directory is given to inmates as a

	<p>resource directory</p> <ul style="list-style-type: none">❖ Could Office of Vocational Rehabilitation (OVR) counselors start coming into the jail?❖ Exploring a quicker process for the VJO to provide in-reach into the jail
--	--

Intercept IV: Re-Entry

CCCF Reentry Services

The Centre County MH/ID/EI Office has a MH Case Manager who spends 50% of her time at the CCCF working with the inmate populations with mental illness and making referrals to services in the community for returning citizens. The CCCF counselors lead daily Pride (for male inmates) and Choices (for female inmates) programs that address reentry needs and the transition back into the community. Additionally, D&A counselors from Crossroads Counseling come into the jail on a weekly basis to provide D&A treatment groups and individual sessions. TASC Case managers are available to conduct assessments, resulting in treatment recommendations for individuals upon release. Lastly, faith-based programs (Celebrate Recovery and Life Recovery) are provided by volunteers in the community.

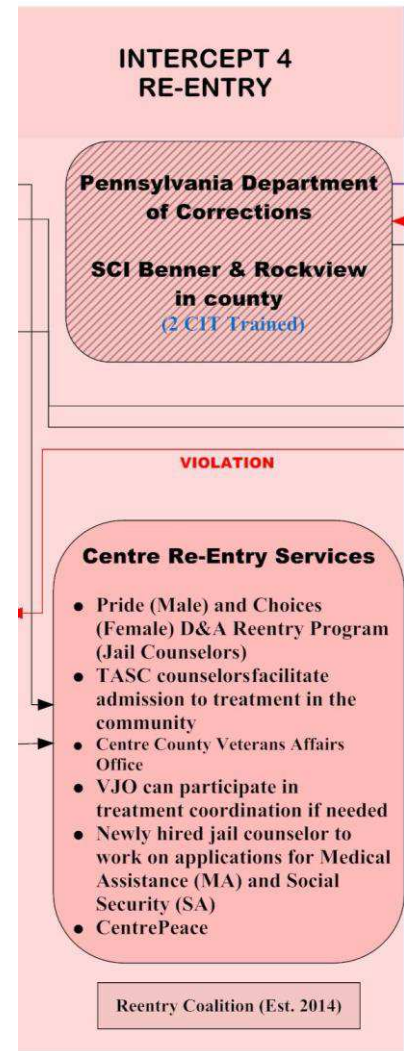
Through a state initiative, D&A staff members are able to begin early processing of Medicaid applications for individuals who are eligible and going directly from CCCF to inpatient rehabilitation. Through this process, the individual would have Medicaid eligibility the day they are released to treatment or within a few days of arriving at the facility.

Over the past two years the correctional facility has expanded the range of programming available to inmates and with input from the Reentry Coalition, is currently looking at creating inmate reentry classes. Additionally, the CCCF recently added another counselor position making a total of five, and this will enhance reentry planning and referral services.

A recent study on recidivism, which was defined as a return to the CCCF within 3 years after the year of release, yielded a recidivism rate of 28.6% for Centre County female inmates released in 2009 and 2010 and a recidivism rate of 29.7% for Centre County male inmates released during that same time period.

Offender Reentry Planning Project

In June of 2014, with the aid of PCCD grant funding, Centre County embarked on an Offender Reentry Planning Project. As part of the project, a Reentry Coalition was created, and this coalition has and will continue to meet on a regular basis as a subcommittee of the CJAB. The coalition developed a Strategic Reentry Plan, which was approved by the CJAB in July 2015. The mission of the Centre County Reentry Coalition is to facilitate and support the successful return of incarcerated individuals to the community. In partnership with government entities, faith and community-based organizations, and other stakeholders, the Coalition will utilize a holistic approach that includes an emphasis on education, families, health services, treatment, employment, mentorship and housing. In pursuing this mission, we shall improve lives, reduce recidivism, and enhance public safety.



The primary goal of the Centre County Reentry Coalition is enhancing the successful return of inmates to the community. The coalition has brought together representatives from law enforcement, the courts, corrections, behavioral health, treatment providers, and the faith community and this has resulted in a pooling of and coordination of resources available to returning citizens.

A Reentry Resource Pocket Guide was recently created by the coalition and is being made available to all inmates. The guide is also available on the correctional facility website, along with other reentry resources. The guide can be found online at: <http://www.centrecountypa.gov/DocumentCenter/View/2469>. This is constantly being updated with new information as it becomes available.

Identified Gaps	Identified Opportunities
<ul style="list-style-type: none"> ❖ Unpredictable jail release dates (especially pretrial individuals) <ul style="list-style-type: none"> ○ Scramble to get services put in place ❖ Wide ranging length of stay makes it tricky to plan for adequate services - Limited discharge planning ❖ Many people released from local jail with nowhere to go will most likely come back to jail ❖ There are restrictions for work release if the person has a domestic violence charges ❖ From a point-in-time survey conducted in October 2014, the recidivism rate for individuals with a co-occurring mental health and substance use disorder is 77.3% for men and 81.3% for women – 11-12% higher than the general population. Within this subpopulation, 77% reported a drug dependency and 46% reported an alcohol dependency. ❖ Housing can be an issue, if they don't have a suitable place to live – they won't be considered for parole ❖ Continuity of care upon re-entry is affected by the fact that psychiatrists in the jail have different prescription practices than the ones in the community – explore changing in PrimeCare contract ❖ Treatment providers don't get a referral list from the DOC prisons prior to re-entry ❖ Limited funds for re-entry services ❖ When people with MH or ID max out, it is hard for MH/ID/EI-D&A Office to provide the intensive continuity of care that they may need ❖ Clinicians and others have a tough time using “criminogenic thinking” models because that haven't had training in these models ❖ SCI Rockview and Benner both have special treatment units and an un- 	<ul style="list-style-type: none"> ❖ Looking to start re-entry classes in jail ❖ Medical assistance (MA) turned on for D&A inpatient treatment (couple of days) – case manager does the COMPASS application online at the jail ❖ Just hired a new counselor dedicated to address medical assistance and social security applications <ul style="list-style-type: none"> ○ SOAR program could be utilized ❖ Jail has easy access to clothing from the Prison Society and other faith-based organizations (for those in need at release) ❖ Human Services Block Grant - a portion is used for programming in jail and for transition to the community. <ul style="list-style-type: none"> ○ Everyone in the MH group has a psychiatric appointment and intake for admission upon release (MA will not factor into it) ❖ 30 days of prescription medication is now being supplied at re-entry (as a result of changes in the Prime Care contract) ❖ Re-Entry Coalition ❖ Completed a study on a recidivism study (target population is only people returning to CCCF) ❖ CCCF is developing a relationship with PSU for increased evaluation and data collection ❖ NIMH grant funding opportunities for MH/DA services at re-entry – would need to partner with researchers

announced release might create an issue when these individuals are released	
---	--

Intercept V: Community Corrections / Community Support

State Probation and Parole

State Parole supervision in Centre County is provided by the **Pennsylvania Board of Probation and Parole** out of the Williamsport District Office. According to the PA Department of Justice Network (a part of PCCD's Dashboard Program), as of March 2015, PA State Probation and Parole has 125 Centre County residents under supervision. The MH/ID/EI – D&A reports that they regularly receive referrals from State Probation and Parole. Please see **Appendix F** for more information on PA State Probation and Parole data.

Centre County Probation & Parole

The **Centre County Probation and Parole Department** is an arm of the Centre County Court of Common Pleas. The department provides both adult and juvenile probation and parole services to the Court. In addition to supervising sentenced offenders in the community, the department prepares pre-sentence investigations for adult offenders and social case histories for juveniles as an aid to the court in sentencing/disposing of cases. The department is also charged with the responsibility to collect all court ordered fines, costs, fees, and restitution as ordered by the Court. This is done through the establishment and enforcement of payment contracts with offenders.

The Department has the following programs in place:

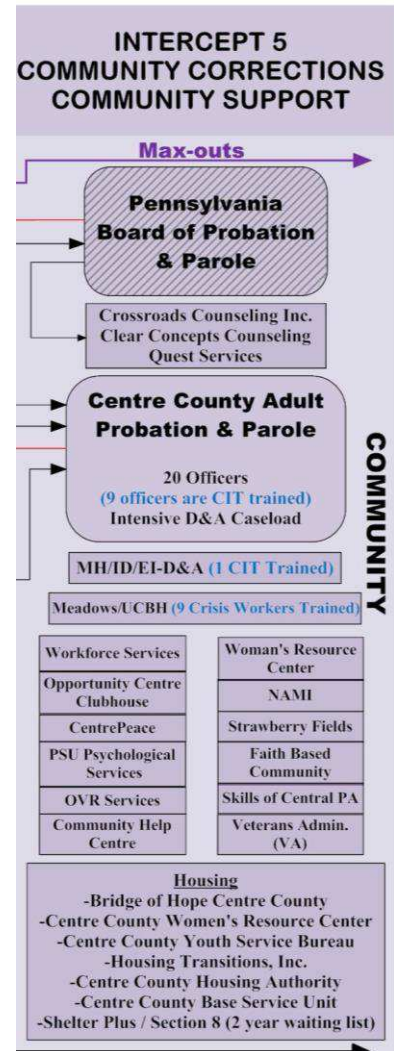
- School-Based Juvenile Probation Officers
- Administration of Intermediate Punishment programs and evaluations
- Coordination of Community Service as ordered by the Court
- Coordination and administration of a Driving Under the Influence Court
- Specialized Probation and Parole Officer for Domestic Violence offenders
- Referral process for offenders to various treatment and/or educational programs
- Intensive supervision for select offenders

According to the PA Department of Justice Network (a part of PCCD's Dashboard Program), as of March 2015, Centre County Adult Probation and Parole had 1,931 residents under probation and 582 on parole.

Community Resources

Universal Community Behavioral Health, Inc. (UCBH) is the not-for-profit division of The Meadows Psychiatric Center that provides community-based resources to include:

- Telephone and Mobile Crisis



- Outpatient Therapy and Medication Management
- School-Based Outpatient Therapy
- After School Program (ASTAP)

For more information, see <http://www.ucbh.org/>.

Crossroads Counseling, Inc. is fully licensed by the PA Department of Drug and Alcohol Programs & the PA Department of Human Services, Office of Mental Health and Substance Abuse Services to provide mental health and substance abuse treatment. Services include:

- Individual Counseling
- Group Counseling
- Drug and Alcohol Evaluations
- DUI evaluations
- Psychiatric Evaluations

For more information, see <http://www.crossroadscounselinginc.com/services.html>.

Skills Incorporated of Centre County provides a wide variety of services, primarily focused on supporting individuals with disabilities so they can live self-determined lives. Whether seeking residential options, vocational, rehabilitative or social opportunities, Skills services are integrated within the community.

- The Opportunity Centre Clubhouse (“the Clubhouse”) is dedicated to supporting individuals recovering from serious mental illness who are in pursuit of their individualized paths to recovery. Following the evidence-based Clubhouse model, the Opportunity Centre Clubhouse is a community organized to support individuals living with the effects of mental illness. Open Monday through Friday from 8 a.m. to 4 p.m., the Clubhouse offers a restorative, relaxed atmosphere for people who have had their lives drastically disrupted by mental illness and who need the support of others who believe recovery from mental illness is possible for everyone
 - Behavioral assessment, which includes a functional behavior analysis, skills analysis, assessments of social and communication skills, and environmental analysis
 - Development of a Behavior Support Plan, monitoring and evaluating progress, and coordination of behavior support services across all environments.
 - Training of staff and/or family on how to support the person using the behavior support plan.
 - Social skills training to assist the person in learning the skills needed to be a full member of his or her community. Topics may include coping skills, assertiveness skills, forming and maintaining interpersonal relationships, anger management skills, safety skills, and human sexuality. All training is based on the needs of the individual.

For more information, see

http://www.skillsofcentralpa.org/public/services/behavior_support_services.php

Centre County Women’s Resource Center provides services for women, men, and children who have experienced dating & domestic violence, sexual assault or stalking. Services include:

- 24-Hour Hotline (See Intercept I)
- Emergency Shelter (See Intercept I)
- Counseling & Advocacy
- Transitional Housing
- Support Groups
- Community Education
- Legal Representation in Family Law and Immigration Remedies
- Child Access Center: Safe Child Exchange/Supervised Visitation
- International Services

For more information on these services, see <http://ccwrc.org/services/>.

Strawberry Fields offers a wide range of services appropriate to varying degrees of disability and need while promoting greater independence, social involvement and self-reliance through personalized support programs. Services include:

- Targeted Case Management Services provide the support needed to access and navigate these services. Service is provided in school settings, in the home and in the community.
- Community Residential Rehabilitation Program (CRR) are designed to provide a supportive "home like" environment where people experiencing significant mental health issues can be supported in improving their daily living skills and in enhancing ways to manage their illness.
- Certified Peer Specialist Program employs individuals in their own recovery to serve as a mentor/ partner in the recovery process for their peers with mental illness.
- For more information on these services, see www.sfionline.org.

The **Community Help Centre** provides 24-hour information and referral on community resources to residents of Centre County, as well as basic education on these resources, informational support groups, and problem solving/guidance as residents navigate these challenging issues. For more information, see <http://www.communityhelpcentre.com/get-help/24-hour-hotline>.

National Alliance on Mental Illness (NAMI) - Centre County

NAMI started as a support group for families of individuals with mental illness, but now serves individuals with mental illness as well as family members. The group meets to discuss personal situations, exchange advice and information, and support advocacy efforts at local, state, and national levels. Meetings are held on the second Tuesday of each month (except July and August) from 7pm to 9pm at South Hills School of Business and Technology, 480 Waupelani Dr., State College. NAMI PA Centre County is publicly funded and is also supported by nominal annual membership dues.

Catholic Charities can provide emergency financial assistance for basic needs including shelter and utilities. They offer counseling services (individual, marital, family) and pregnancy support. Services are for Centre County residents. Catholic Charities serve all who seek help without regard to religious affiliation.

Housing

Centre County CJAB Housing Report

The Centre County Board of Commissioners, following a recommendation from the County Criminal Justice Advisory Board (CJAB), engaged Diana T. Myers and Associates, Inc. (DMA) to conduct a study focusing on the housing needs of people with mental illness involved with the criminal justice system in Centre County. The goals of the study were to: collect and analyze data on the target population; determine the resources and gaps in the existing criminal justice, mental health and housing systems; and to recommend strategies for filling those gaps.

Under the guidance of a CJAB work group, the consultant conducted 32 interviews with key stakeholders and analyzed data from a variety of sources including the Centre County Correctional Facility (CCCF) and County Mental Health. They also conducted Point in Time Surveys in the CCCF, the Centre County Forensic Mental Health Case Manager's Caseload and the Meadows Psychiatric Hospital on the night of January 28, 2009.

Transitional Housing

- Bridge of Hope Centre County - 814-237-4673
- Centre County Women's Resource Center - 1-877-234-5050
- Centre County Youth Services Bureau - 814-234-2100
- Housing Transitions, Inc. - 814-237-5508

Community Residential Rehabilitation

- Community Services Group (CSG) - 814-861-0617
- Strawberry Fields, Inc. - 814-234-6023

Affordable Housing

- Housing Authority of Centre County - 814-355-6750
- Housing Transitions, Inc. - 814-237-4863
- MidPenn Legal Services – Fair Housing and Rights (3500 East College Avenue, Suite 1295, State College) 814-238-4958

Rental Assistance

- AIDS Resource (Centre County Current Clients) 1-800-773-2437
- Catholic Charities, Diocese of Altoona-Johnstown (Centre County) 814-353-0502
- Central Pennsylvania Community Action (Centre County) 1-800-822-2610
- Interfaith Human Services (Centre County) 814-234-7731
- Salvation Army – Emergency Assistance (Centre County) 814-861-1785
- Other community organizations may provide financial assistance for security deposits and rental payments.

Residential support is also available through a **Fairweather Lodge** as part of Strawberry Fields Inc. The goal of the lodge is to promote and engage in independent living and group decision-making with minimal staff support. Currently, four individuals are living at the Fairweather Lodge.

Shelter Plus Care

Individuals are eligible for the Shelter Plus Care program if they meet the homeless criteria for the Homeless Emergency Assistance and Rapid Transition to Housing (HEARTH) Act and have an open case with MH/ID/EI-D&A and a mental health diagnosis. This program is in

coordination with the Housing Authority of Centre County. For this program, individuals are considered homeless if they fit the following definition of homelessness:

- 1) sleeping in a place not designed for or used as a regular sleeping accommodation, including a car, park, abandoned building, bus or train station, airport, camping ground, etc.
- 2) living in a shelter designed to provide temporary living arrangements (including emergency shelter, congregate shelters, transitional housing, hotels and motels paid for by charitable organizations or by government programs)
- 3) exiting an institution where they resided for 90 days or less and were residing in the emergency shelter or place not meant for human habitation immediately prior to entering the institution.
- 4) fleeing domestic violence
- 5) and/or currently in Transitional Housing or in a shelter prior to Transitional Housing.

Individuals must participate and follow through with supportive services coordinated through MH/ID/EI-D&A. Individuals must have income and the amount of financial assistance provided to them is based on their income. They may also receive some assistance with utilities.

Housing Authority of Centre County

Centre County residents can be eligible for a number of programs and housing units available through the Housing Authority of Centre County.

- *Housing Choice Vouchers*: The Housing Choice Voucher Program is a tenant-based rental assistance program which requires participants to pay approximately 30% of their adjusted gross income or a minimum of \$50 towards the rent. The tenant based voucher stays with the tenant when he or she moves as long as all program requirements are met. Participants are selected through waiting list management, and must meet income and occupancy guidelines, along with tenant suitability standards.
- *FUP Vouchers*: The Family Unification Program is a form of subsidy available only through a referral from Children and Youth Services. The program is designed to prevent the separation of children from their parents because of inadequate housing. Program participants must complete an intake and have an open case with Children and Youth.
- *Shelter Plus Care Program*: SEE ABOVE. This program is in coordination with the Housing Authority of Centre County.

Employment Services

Pennsylvania Office of Vocational Rehabilitation (OVR)

The Pennsylvania Office of Vocational Rehabilitation, or OVR, provides vocational rehabilitation services to help persons with disabilities prepare for, obtain, or maintain employment. OVR provides services to eligible individuals with disabilities, both directly and through a network of approved vendors. Services are provided on an individualized basis. The OVR counselor, during face-to-face interviews, assists customers in selecting their choice of vocational goals, services and service providers. An Individualized Plan for Employment (IPE) is developed, outlining a vocational objective, services, providers and responsibilities. Certain services are subject to a Financial Needs Test (FNT) and may require financial participation by the customer. Counseling and guidance, diagnostic services, assessments, information and referral, job development and placement, and personal services such as readers or sign language

interpreters are provided at no cost to the individual. Also, by law OVR customers receiving Social Security benefits for their disability (SSI, SSDI) are exempt from OVR's Financial Needs Test.

Transportation

- Bellefonte Emergency Medical Services – Non Emergency Only – (369 Phoenix Avenue Bellefonte) 814-355-2907
- Centre Area Transportation Authority (CATA) (108 East Beaver Avenue, near Schlow Library, State College) 814-238-2282
- Centre County Office of Transportation (Centre County) 814-355-6807
- Centre County Office of Aging (Centre County, over 60 years old) 814-355-6716
- Centre County Veterans Affairs Office (Centre County) 814-355-6812
- Centre LifeLink – Non Emergency Only (125 Puddintown Road State College) 814-237-8163
- Fullington Bus (152 North Atherton Street State College) 814-238-1100 or (415 4th Street Philipsburg) 814-342-3257
- Greyhound (152 North Atherton Street State College) 814-238-7971
- MegaBus 1-877-462-6342

For more information on all of the above services, please see:

- ***Mental Health Services in Centre County: A Guide to Mental Health Services for Individuals with Mental Illness Families and Friends*** (<http://centrecountypa.gov/DocumentCenter/View/957>)
- ***Housing Services In Centre County: A Guide to Emergency, Transitional and Permanent Affordable Housing*** (<http://www.statecollegepa.us/index.aspx?nid=2656>)
- ***Centre County Transportation Guide*** ([http://www.crpr.org/senior/Sr Trans Booklet 2014 CentreCo.pdf](http://www.crpr.org/senior/Sr%20Trans%20Booklet%202014%20CentreCo.pdf))

Identified Gaps	Identified Opportunities
<ul style="list-style-type: none"> ❖ Centre House needs to be cautious about admissions for people with criminal record because they serve families with children in their shelter ❖ Limitations on housing options for people released from jail due to affordability issues and criminal record issues ❖ Finding affordable housing in the State College market is very hard due to high college student population <ul style="list-style-type: none"> ○ In early 2015, 92 affordable housing units – were converted to student housing ❖ Limits in transportation makes it hard to expand housing options for re-entry population <ul style="list-style-type: none"> ○ Where there are housing units (typically rural areas) there is no public transportation ❖ Spotty mental health caseload list from DOC to MH/ID/EI-D&A Office – occasionally receive a phone call from a facility (less than a week) <ul style="list-style-type: none"> ○ One example was a last minute notification over a holiday weekend – were able to get them connected to services but had to scramble ❖ Probation doesn't have a specialized officer to work with individuals with MH issues or D&A issues. Each caseload has its share of each. No officers in state parole specialize in services to the MH population (otherwise, certain officers see specific types of cases) ❖ Section 8 Housing is currently a two year wait ❖ Specialized housing for target populations face community pushback regarding housing <ul style="list-style-type: none"> ○ "Not in my backyard" stigma for D&A, MH, and ID ❖ OVR is not currently represented on the CJAB or Reentry Coalition 	<ul style="list-style-type: none"> ❖ Treatment providers get referrals from probation office ❖ Crossroads uses components of Moral Reconciliation Therapy (MRT) in their drug and alcohol counseling practices. ❖ County has the Fairweather Lodge program ❖ Could use a screen for criminogenic risks? ❖ Women's Resource Center offers a shelter option for people re-entering the community (esp. for women who need protection from domestic violence) ❖ Shelter Plus is a good option for housing because they are more accepting of people with a criminal record ❖ Strengthening the collaboration with PSU across intercepts ❖ Treatment providers receive referrals from State Parole ❖ Probation keeps track of home plans ❖ Looking at how case management can be part of the process to help with problem solving in terms of treatment and other needs (e.g. employment); trying to get them involved in the process earlier <ul style="list-style-type: none"> ○ A component of a Second Chance grant application which was submitted recently ❖ Applied for funding through the Department of Drug and Alcohol Programs (DDAP) (for FY 15-16) and federal Second Chance Act dollars (March 2015) to increase case management and treatment services

Centre County Priorities

Subsequent to the completion of the *Cross-Systems Mapping* exercise, the assembled stakeholders began to define specific areas of activity that could be mobilized to address the gaps and opportunities identified in the group discussion about the cross-systems map. Listed below are the priority areas identified by the workshop participants and the votes received for each proposed priority. Participants were asked to use **red** votes for the priorities they felt should be the highest priority for the county moving forward. **Green** votes were for their second and third priorities.

Top Priorities

1. Expand housing options - 4 green, 24 red (total 28)
 - a. Review housing authority plan
2. Expand transportation options- 13 green, 0 red (total 13)
3. Build extended partnerships across Centre County - 6 green, 2 red (total 8)
 - a. ER, bridging physical and BH
4. Explore strategies to sustain CIT - 8 green, 0 red (total 8)
5. Expand collaboration at the point of probation violation - 4 green, 3 red (total 7)
 - a. More alternatives other than returning to jail
6. Expand therapeutic courts - 8 green, 0 red (total 8)
7. Expand training options: MHFA, hearing voices or expand CIT to other groups (beyond first responders) - 5 green, 2 red (total 7)

Additional Priorities

- Expand jail diversion options - 4 green, 2 red (total 6)
- Expedite MA behind the walls - 4 green, 1 red (total 5)
- Bring recovering addicts into the jail to speak to inmates in order to support recovery - 4 green, 0 red (total 4)
- Expand employment and vocational training and support options - 3 green, 0 red (total 3)
 - Help people to identify strengths in order to sustain jobs
- Improve communication between DOC and local community stakeholders - 3 green, 0 red (total 3)
- Explore possibility of MH probation officers - 1 green, 1 red (total 2)
- Develop strategies to identify veterans prior to jail admit - 2 green, 0 red (total 2)
- Explore expansion of MH service capacity within Centre County - 0 green, 0 red (total 0)

Centre County Action Plan

<u>Priority: Moving Forward</u>			
Objective	Action Step	Who	When
Report summarizing results of mapping workshop	1. Draft of the map, priorities, and action plan	CoE to Gene Lauri – will share with the mapping group	April 22, 2015
	2. First draft of the report		May 15, 2015
	3. Workshop participants will provide feedback to CoE		June 15, 2015
	4. Send to the CJAB and Reentry Coalition for review	Gene Lauri will distribute to these groups	
	5. CoE to finalize report		
Next meetings to present the cross systems mapping process and report	<ol style="list-style-type: none"> 1. Reentry Coalition 2. CJAB 3. Judge Lunsford would like to see this group stay together and continue to discuss issues – Ad hoc Behavioral Health Committee 		<p>October 2015 October 25 2015</p>

Priority Area 1: Expand housing options (review housing authority plan)			
Group Brainstorming			
Objective	Action Step	Who	When
1.1	Review report from Diana Meyers on housing as a starting point (although information is now 5 years old)	<ul style="list-style-type: none"> Centre County's Local Housing Options Teams (LHOT - chaired by Natalie Corman) has been reviewing the Meyers report since 2014, but it often gets pushed to the side. The group will continue to review the report Add a jail counselor, probation officer, and someone from pretrial to the LHOT meetings 	<p>LHOT</p> <p>LHOT meets monthly (First Tuesday of every month)</p> <p>LHOT meetings – can have criminal justice relevant topics in the beginning of meeting. This was started on May 5, 2015</p>
1.2	Review housing authorities' 5-year plan	<ul style="list-style-type: none"> Every August the housing authority board votes on it and they have public hearing - The housing authority starts talking about changes in June of each year - Ideas should be sent in by that time 	<p>LHOT</p> <p>October 2015</p>
1.3	Review options for short term housing (e.g. buy a hotel) given that there is a two-year waiting list for permanent housing.	<ul style="list-style-type: none"> Examine options to reinvestment dollars to assist with the housing issue Bringing in local businesses as partners (work force development) 	
1.4	Educate/update public defenders and district attorney's regarding current housing options	<ul style="list-style-type: none"> Conduct an educational presentation and provide copies of the county housing resource guide (orange book) 	<p>Natalie Corman, public defender, and district attorney's offices</p>

1.5	Determine the number of people maxing out in jail and the numbers of people in jail awaiting a home plan	<ul style="list-style-type: none"> • Examine jail (or other relevant) databases to determine the numbers • Tom (Probation) reports that there is only one individual awaiting a home plan 	CCCF, Probation, and Dr. Gido Study	
1.6	Understand what other Pennsylvania communities are doing in terms of housing	<ul style="list-style-type: none"> • Examine models in other counties, such as: • Union County’s Master Leasing Program http://www.pacenterofexcellence.pitt.edu/Intercepts/Community_connection.html#Justice_Bridge • Mifflin County’s does “master leasing” (someone else holds the lease and teach clients how to be a good tenant) - http://www.housingalliancepa.org/sites/default/files/resources/ML_Bloomsburg.pdf • Northampton’s Reentry Coalition (‘reentry summit’) • Look at Franklin County’s Public Defender Case Worker program • Reach out to the faith-based community for support – mentoring, clothing, housing 	Karri Hull will find out more and share information with the county	
1.7	Explore work release options	<ul style="list-style-type: none"> • Consider options such as the North Carolina model that Lisa Epperly Galanis described (Faith-based work release program in North Carolina where the organization provides supplies and teaches the people skills to fix up a run-down home. In exchange they get to live at the location for 6-12 months) • Consider involving faith- 	CCCF	

		<p>based businesses and owners of foreclosed properties in discussions related to options for a program such as</p> <ul style="list-style-type: none"> • Also look at the Lycoming work release program where inmates build homes (Warden recently did a site visit) • Given the local push-back related to housing in the community, consider options for building housing on jail grounds 		
1.8	Think about options to preserve current housing	<ul style="list-style-type: none"> • Looking into a day-reporting center so that people don't lose their current housing (e.g. Cambria, Franklin, Mifflin, York, Somerset) 	Probation	
1.9	Include pre-trial into these efforts (example models are available for Chicago and in Chester County, VA)	<ul style="list-style-type: none"> • Potentially utilize the centralized housing position as a resource for this population. 	Public Defender, Bail Agency & Adult Services	
1.10	Explore a model for a "holistic case management model" assessment of offenders	<ul style="list-style-type: none"> • Casey McClain (Public Defender's office) spoke about a model for a "holistic case management model" assessment of offenders. The idea is to create a committee with representations from multiple areas (e.g. transportation, housing, employment, MH, D&A, legal) to work with public defender. The group would talk about housing needs and other issues related to a particular client. A case manager keeps the group talking. Amy from woman's shelter says they use a similar model – but they don't see all 	Karri will follow-up on more information on Franklin County	

		<p>offenders (lots of people falling through the cracks)</p> <ul style="list-style-type: none"> • Explore Franklin County Public Defender Case Worker to address some of the above (See Appendix B) • Reach out to PA Prison Society for assistance with clothing for jail releases 		
1.11	<p>Address stigma in community for D&A and MH populations (Centre county residences put up resistance to housing for criminal justice and mental populations - to address this gap explore “building something on the jail grounds”)</p>	<p>Create a centralized housing position in the county to be a single point of contact for housing needs for all county departments to include those involved with the criminal justice system.</p>	<p>Adult Services Office (CYS, MH/ID/D&A)</p>	<p>Position added August 2015</p>

Priority Area 2: Expand transportation options				
Group Brainstorming				
Objective	Action Step	Who	When	
2.1	<p>Increase understanding of why transportation is a problem (so that the plans target the right areas)?</p>	<ul style="list-style-type: none"> • Look into the reasons why people need transportation to see if that will help determine the areas on which to focus. For example, is it because they have to get to hearing? Is it to attend appointments (e.g. housing authority meetings, medical appointments?) • Consider adding the possibility of video hearings in Phillipsburg (if one of the reasons is because of the need to attend court hearings; 	<p>Need to create a “team” to identify gaps and what services are actually available now.</p>	<p>September 2015</p>

		defendant has to waive right to “in-person” hearing)		
2.2	Increase access to transportation using existing resources	<ul style="list-style-type: none"> • Look into the availability of vans from various resources. For example: <ul style="list-style-type: none"> ❖ Speak to Dave Lomison at County Transportation. CATA cycles through vans every 3-4 years and may have some available for use or purchase ❖ Check with Fairweather Lodge about their van resources ❖ Talk with CentrePeace, Inc. about their van resources 		
2.3	Understand how other PA counties are addressing the transportation issue	<ul style="list-style-type: none"> • Look at Blair County’s practice. They got a grant (through Community Action) to people to get a van ride to and from work (24 hours) interviews and to work for 30 days. After 30 days, they can pay low fee to continue the service. (They can’t live on a bus route.) This might be a model, which can be modified. The funds can also be used for car repairs and purchasing a car. 		
2.4	Consider strategies “outside the box”	<ul style="list-style-type: none"> • Consider a program to use jail inmates to do car repairs at a low cost (a work release idea) • Warden mentioned a program with homeless Vets or DOC inmates drove vans (they couldn’t have a driving violation) –consider a similar work release program? 	Commissioners have started talking about some options	

		<ul style="list-style-type: none"> • Bring in the business community to help partner in these ideas (e.g. apprenticeships, donate services a cheaper cost). • County Commissioners to continue discussion related to this area 		
Group Discussion				
<ul style="list-style-type: none"> ❖ Some transportation gaps the county faces: <ul style="list-style-type: none"> ○ The county has some vans, but they require that you have MA and you have to schedule 24 hours in advance (The vans are running constantly and the program is run by the Centre County Office of Transportation) ○ CATA availability is restricted particularly on weekends ○ The Centre County Office of Transportation takes state inmates from local jail to bus station (high cost \$18.90 per person/per trip) 				

Priority Area 3: Build extended partnerships across Centre County (ER, bridging physical and behavioral health)

Objective		Action Step	Who	When
3.1	Outreach to Mt Nittany Medical Center	<ul style="list-style-type: none"> • Ask Commissioner Pike to approach CEO of the hospital (Mt Nittany Medical Center) • Invite Mt Nittany CEO to next CIT graduation • Let the hospital see the CIT video (https://www.youtube.com/watch?v=mzXJKmPcMJw) • Continue including hospital personnel in crisis team meetings 	Michael Pipe	May 2015

Priority Area 4: Explore strategies to sustain CIT				
Group Brainstorming				
Objective		Action Step	Who	When
4.1	Sustain CIT (11 months left on CIT grant; need about \$35,000 per year for the coordinator position)	<ul style="list-style-type: none"> Continue to explore grant funding opportunities (recognize that grant funds are harder to get for existing programs) Work CIT into the block grant (per Tom of MH/ID; recognize that grant funds are harder to get for existing programs) Explore foundation grant funds (e.g. talk with Staunton Farms to see if they have suggestions for foundations in this area) Look at braided funding for CIT programs (e.g. law enforcement to kick in some money, block grants) CIT for Youth and Vets CIT enhancements – these represents other opportunities for funding support (Centre County has many veterans organizations) 	Gene Lauri & Natalie Corman Tom McDermott Gene Lauri	On-Going September 2015
4.2	Understand the full cost to run the CIT training program	<ul style="list-style-type: none"> Put together a full CIT budget that includes costs such as food so there is an accurate assessment of the full costs 	Natalie Corman	

Priority Area 5: Expand collaboration at the point of probation violation (more alternatives other than returning to jail)				
Group Brainstorming				
Objective		Action Step	Who	When
5.1	Look at	<ul style="list-style-type: none"> Cross check probation 	Tom Young	

	characteristics of the probation population to understand their behavioral health issues.	information with other agencies (D&A and MH/ID)		
5.2	Explore probation violation statistics (clarify and distinguish parole and probation violations)	<ul style="list-style-type: none"> Gene has started to identify/clarify parole and probation violations 	Gene Lauri	
Group Discussion				
<ul style="list-style-type: none"> ❖ Chester County looked at 9 months of jail admits with SMI and why coming in, past history with BH system, meds? They found approximately 50% were on probation at time admitted to jail. Might want to take a look at same thing here. At this point, Gains Center began thinking of preventing probation violations as a diversion option. ❖ 35-38% of CC jail inmates are on psychotropic meds ❖ Individuals in the jail with SMI use a lot of resources (roughly 4-6 people) ❖ PrimeCare should have a list of the SMI folks (per Warden) – Warden said they will generate MH caseload data for the report <ul style="list-style-type: none"> ○ Michael Wolff (Penn State) notes that PrimeCare would be likely to use a diagnosis that would permit med prescriptions, so may under-diagnosis something like antisocial personality disorder 				

Priority Area 6: Expand therapeutic courts				
Group Brainstorming				
Objective		Action Step	Who	When
6.1	Identify relevant populations for various court (e.g. MH court, drug court, veteran's post-conviction court)	<ul style="list-style-type: none"> Examine available data to determine if there is an adequate need to warrant various therapeutic courts. This will include developing a profile of the SMI, MH, Vets, D&A populations in Centre County. Specify where the data needed for each profile is located (current impression is that it is in multiple places) 	Gene Lauri, Probation	October 2015

		<p>across the county)</p> <ul style="list-style-type: none"> • Look at Veteran’s Reentry Research Service (VRRS) - a web-based system that allows prison, jail, and court staff to quickly and accurately identify Veterans among their inmate or defendant populations • Review Diane Meyer’s housing report to see if it has useful information related to therapeutic courts 	<p>CCCF & Gene Lauri</p> <p>Natalie Corman & CJAB</p>	<p>Began May 2015</p>
6.2	Specify the policies and procedures related to each court	<ul style="list-style-type: none"> • Have pragmatic discussions regarding thresholds for therapeutic court (e.g. definition of disorders that meet criteria), the model for the court (e.g. diversion, post-conviction) and explore cost 	<p>Cathy (D&A), Tom McDermott, someone from probation, Gene, Jack</p>	
6.5	Continue work on juvenile D&A issues			
6.6	Assist current efforts related to the need for a MH Court (a report that is to be written by Dr. Rosemary Gido from IUP and already approved by the Prison Board)	<ul style="list-style-type: none"> • Look into Dr. Gido’s proposal to learn what data she will need and make sure that relevant agencies are collecting what she needs 	<p>CCCF</p>	
Group Discussion				
<ul style="list-style-type: none"> ❖ Some counties have one court but have sub-dockets to deal with the MH vs. D&A offenders (Judge said it is likely they’d do this) <ul style="list-style-type: none"> ○ MH cases take longer and have different teams in the community to support them ○ Try to be sure that the special courts work collaboratively, don’t set up “kingdoms” 				

Priority Area 7: Expand training options: MHFA , hearing voices or expand CIT to other groups (beyond first responders)				
Group Brainstorming				
Objective		Action Step	Who	When
7.1	Expand MHFA	<ul style="list-style-type: none"> Identify target groups for training (examples might include housing staff, public defenders, DA’s Office, Victim’s Advocates, probation/parole officers) Identify trainers and funding options. The Meadows (Brenda Witt-Fry) has MHFA instructors and funding to bring training locally (American Society of Suicide Prevention). They could fund some MHFA training for other groups. Consider regionalizing a MHFA train-the-trainer course (costs about \$30,000 to bring in trainer to do a train-the-trainer workshop); split that cost among contiguous counties and all end up with a good number of trained trainers. Bring MHFA training to all jail personnel (per Warden) next year but continue sending personal for CIT training a few at a time 	<p>CSM Group</p> <p>Brenda Witt-Fry</p>	<p>July 2015</p> <p>August –Oct. 2015</p>
7.2	Expand Hearing Voice	<ul style="list-style-type: none"> Identify target groups (Tom Young mentioned he would like to have PO’s trained in this as well as MHFA) Schedule training Obtaining funding (The Meadows may be able to put some money toward this 	<p>Tracy Small and Brenda Witt-Fry both have contacts for this training</p>	

		training)		
Group Discussion				
<p>❖ The Meadows funding is specifically for MHFA (max class size = 20-25). They currently have 2 trainers for MHFA and 1 youth trainer) – but they can't do train-the-trainer.</p>				

Additional priorities identified by Centre County included:

- Expand jail diversion options
- Expedite MA behind the walls
 - Consider contacting Maureen Barden for technical assistance; maureenbarden@gmail.com; 215 287-4238
- Bring recovering addicts into the jail to speak to inmates in order to support recovery
- Expand employment and vocational training and support options (help people to identify strengths in order to sustain jobs)
- Improve communication between DOC and local community stakeholders
- Explore possibility of MH probation officers
 - Understand the extent of the behavioral health issues among probationers
 - Clarify current strategies to identify the population with a behavioral health issue
 - Examine data to determine the number of probationers with SMI
 - Examine models for using specially trained POs for the MH group
 - Consider the option to use specially trained POs for the MH group
 - Consider other PA models (e.g. Adams County probation co-responds with MH case managers)
- Develop strategies to identify veterans prior to jail admit
- Explore expansion of MH service capacity within Centre County

Conclusion

Participants in the *Cross-Systems Mapping* workshop showed much enthusiasm in working together to improve the continuum of resources available for people with severe mental illness and often co-occurring substance use disorders involved in the Centre County criminal justice system. Centre County is poised to tackle a number of critical issues that will greatly improve services for this group. The assembled stakeholders spent time gaining a greater understanding of their shared systems, as well as crafting strategies related to improving the collaborative infrastructure for the group and addressing the gaps and opportunities at each intercept.

Considerable work has already been undertaken to improve services for people with severe mental illness and often co-occurring substance use disorders involved in the Centre County criminal justice system. Law enforcement training, specialized case management, in-jail treatment programs, and the development of a reentry coalition are some examples of current Centre County initiatives. Centre County has also developed some thoughtful data to begin to provide a clearer understanding of the issues being discussed. In addition, exploring therapeutic courts and sustaining Crisis Intervention Team (CIT) training are promising community efforts that generated a good deal of interest during the workshop. Local stakeholders participating in the *Cross-Systems Mapping* were clearly interested in building on current successes to better serve this population.

The expansion of the planning group to tackle the priorities established during the *Cross-Systems Mapping* workshop is an essential next step in a true systems change process. It will be important to expand effective working relationships with other groups that were unable to attend the workshop, including police jurisdictions, local Magisterial District Judges, Mount Nittany Health System, and other local peers. Regular meetings should be held by this larger group to facilitate information sharing, planning, networking, development and coordination of resources, and problem solving.

Closing

Centre County is fortunate to have a wide range of stakeholders across the mental health, substance abuse and criminal justice systems that have made significant efforts to understand and support the challenging issues discussed in this workshop. The *Cross-Systems Mapping* workshop gave these stakeholders a chance to develop a coordinated strategy to move forward with the identified priorities.

By reconvening and supporting the work of the group in coming months, it will be possible to maintain the momentum created during the *Cross-Systems Mapping* workshop and build on the creativity and drive of key local stakeholders. The Pennsylvania Mental Health and Justice Center of Excellence hopes to continue its relationship with Centre County and to observe its progress. Please visit the Pennsylvania Mental Health and Justice Center of Excellence website for more information, www.pacenterofexcellence.pitt.edu.

Appendix A: Participant List

Last Name, First Name	Agency / Title	Street Address City, State, Zip	Phone	E-Mail
Andress, Sandra	Crossroads Counseling, Inc. / Wellness Nurse	444 E. College Ave., State College, PA 16801	814-231-0940	
Arbogast, Cathy	CC Drug & Alcohol / Assistant Administrator D&A	3500 E. College Ave., State College, PA 16801	814-355-6786	ciarbogast@centrecountypa.gov
Barger, Kimberly	OVR / Vocational Rehabilitation Counselor	State College, PA 16801	814-946-7240	kibarger@pa.gov
Brewster, Thom	CentrePeace, Inc. / Executive Director	3013 Benner Pike, Bellefonte, PA 16823	814-353-9081	thom@centrepeace.org
Caraway, Shelby	Calvary Baptist Church / Community Outreach Coordinator	P.O. Box 775, State College, PA 16827	84-238-0822 ext. 16	shelby@calvarysc.org
Corman, Natalie	CC Adult Services / Director	Willowbank Office Building, Bellefonte, PA 16823	814-355-6768	nwcorman@centrecountypa.gov

Last Name, First Name	Agency / Title	Street Address City, State, Zip	Phone	E-Mail
Ebeling, Karen	Crossroads Counseling, Inc./ Certified Recovery Specialist	444 E. College Ave., State College, PA 16801	814-231-0940	karene@crossroadscounselinginc.com
Eby, Marjorie	PA CareerLink Mifflin and Centre Counties / Certified Recovery Specialist	240 Match Factory Place, Bellefonte, PA 16823	814-548-7587	meby@tiu11.org
Elling, Roger	CC Veterans Affairs Office / County Veteran's Office Assistant	Willowbank Office Building, Bellefonte, PA 16823	814-355-6812	rdelling@centrecountypa.gov
Epperly Galanis, Lisa	CC District Attorney's Office / Assistant District Attorney	Centre County Courthouse, Bellefonte, PA 16823	814-355-6735	LGalanis@centreda.org
Feger, Denise	Crossroads Counseling, Inc. / Vice President of Operations	444 E. College Ave., State College, PA 16801	814-231-0940	DeniseF@crossroadscounselinginc.com
Gadsby, Rich	Strawberry Fields, Inc. / Director of MH Services	3054 Enterprise Drive, State College, PA 16801	814-234-6023	gadsbyrr@yahoo.com
Gordon, Melanie	Centre County Correctional Facility / Deputy Warden	700 Rishel Hill Road, Bellefonte, PA 16823	814-355-6794	mlgordon@centrecountypa.gov

Last Name, First Name	Agency / Title	Street Address City, State, Zip	Phone	E-Mail
Hite, Jeff	CC Correctional Facility / Director, Inmate Services	700 Rishel Hill Road, Bellefonte, PA 16823	814-355-6794	jhite@centrecountypa.gov
Hoy, Darlene	Housing Authority of CC / Director of Housing Management	121 Beaver Farm Lane, Bellefonte PA 16823		dhoyhacc@comcast.net
Jones, Jim	Central Counties Youth Detention Center / Administrator	148 Paradise Road Bellefonte, PA 16823	814-355-0650	jejj22@comcast.net
Koleno, Joe	CC Correctional Facility / Deputy Warden of Administration	700 Rishel Hill Road, Bellefonte, PA 16823	814-355-6794	jskoleno@centrecountypa.gov
Lauri, Gene	CC Criminal Justice Planning / Director	CCCF, 700 Rishel Hill Rd., Bellefonte, PA 16823	814-548-1048	elauri@centrecountypa.gov
Lunsford, Bradley	CC Court of Common Pleas / Judge	Centre County Courthouse Annex, Bellefonte, PA 16823	814-355-6727	bplunsford@centrecountypa.gov
Mackes, Carol	Housing Authority of Centre County / Section 8 Coordinator	121 Beaver Farm Lane, Bellefonte, PA 16823	814-355-6750 ext. 0	cmackes01@comcast.net

Last Name, First Name	Agency / Title	Street Address City, State, Zip	Phone	E-Mail
McClain, Casey	CC Public Defender's Office / Assistant Public Defender	Centre County Courthouse, Bellefonte, PA 16823	814-355-6798	cmmclain@centrecountypa.gov
McDermott, Tom	CC MH/ID / Director	3500 E. College Ave. Suite1200 State College, PA 16801	814-355-6786	tjmcdermott@centrecountypa.gov
Miller, Amy	CC MH/ID / Forensic Case Manager	3500 E. College Ave., Suite 1200, State College, PA 16801	814-355-6786 ext. 1393	asmiller@centrecountypa.gov
Millmore, Bonnie	CACJ / Director	411 S. Burrowes St. State College, PA 16801	814-234-1059	cacj@choiceonemail.com
Osagie, Sylvester	Penn State / Faculty	101 Innovation Blvd., University Park, PA 16802	814-573-0364	obhiose@yahoo.com
Pipe, Michael	CC Board of Commissioners / Commissioner	Willowbank Office Building, Bellefonte, PA 16823	814-355-6700	mpipe@centrecountypa.gov
Potts, Miranda	Community Member	1381 Decatur Street, Philipsburg, PA 16866	814-441-0145	mrae560@gmail.com

Last Name, First Name	Agency / Title	Street Address City, State, Zip	Phone	E-Mail
Rumbel, Amy	Women's Resource Center / CCWRC Shelter Manager	140 W Nittany Ave State College, PA 16801	814-234-5050	annekard@ccwrc.org
Shea, Melinda	James E. Van Zandt VA Medical Center / Veterans Justice Outreach Coordinator	2907 Pleasant Valley Blvd., Altoona, PA 16602	814-943-8164, ext. 4151	Melinda.Shea@va.gov
Sheffer, Dustye	Pyramid Healthcare, Inc. / Community Relations	270 Lakemont Park Blvd., Altoona, PA 16602	814-327-8495	dsheffer@pyramidhc.com
Shuler, Kelly	Skills of Central PA / Director, Psych Rehab	341 Science Park Road, State College, PA	814-404-6269	kshuler@skillsgroup.org
Small, Tracy	CC Crisis Intervention Team / CIT Coordinator	C/O Ferguson Twp. PD 3147 Research Drive State College, PA 16801	814-237-1172	centrecountycit@gmail.com
Smith, Richard C.	CC Correctional Facility / Warden	700 Rishel Hill Road, Bellefonte, PA 16823	814-355-6794	rsmith@centrecountypa.gov
Stahl, Jennifer	Housing Transitions, Inc. / Housing Case Manager	217 E. Nittany Ave., State College, PA 16801	814-237-1944	stahljennifer2@gmail.com

Last Name, First Name	Agency / Title	Street Address City, State, Zip	Phone	E-Mail
Swarmer, Jody	Community Member	130 W. Burrowes Street Bellefonte, PA 16823	814-308-4387	jaswarmer77@gmail.com
Tatterson, Bonnie	Community Help Centre / Executive Director	410 S. Fraser Street State College, PA 16801	814-272-1542	bonniet@communityhelpcentre.com
Walters, Jennifer	CC 911 Emergency Communications / 911 Quality Assurance Supervisor	Willowbank Office Building, Bellefonte, PA 16823	814-355-6800	jmwalters@centrecountypa.gov
Witt-Fry, Brenda	Meadows / UCBH / Director, Business Development	132 The Meadows Drive, Centre Hall, PA 16828	814-880-2928	Brenda.Fry@uhsinc.com
Wolff, Michael	Penn State Psychological Clinic / Assistant Director	314 Moore Building University Park, PA 16802	814-863-5659	mxw102@psu.edu
Young, Tom	CC Probation & Parole / Chief Probation Officer	Centre County Courthouse, Bellefonte, PA 16823	814-355-6700	tjyoung@centrecountypa.gov
Zola, Francesca	Office of Vocational Rehabilitation / Vocational Rehabilitation Supervisor	1130 12th Ave., Suite 500, Altoona, PA 16601	814-946-7240	fzola@pa.gov

PCCD/Center of Excellence Staff			
Karri Hull	PCCD / CJAB Specialist - South Central Region	570-263-0809	c-khull@pa.gov
Dr. Patricia Griffin	Senior Consultant, PA Mental Health and Justice Center of Excellence	215-836-0570	pgriffin@navpoint.com
Carol Schubert	Senior Consultant, PA Mental Health and Justice Center of Excellence	412-647-4760	schubertca@upmc.edu
Katy Winckworth-Prejsnar	Project Coordinator, PA Mental Health and Justice Center of Excellence	215-553-7174	Kw494@drexel.edu
Shervin Bazmi	Research Specialist, PA Mental Health and Justice Center of Excellence	412-647-4760	bazmis@upmc.edu

Appendix B: Centre Cross Systems Mapping: Follow-Up Resources

- I. **Veteran’s Reentry Research Service (VVS)** – Please see p. 74 of this document for a quick start guide and more information. Any question please contact Kevin Casey (kevin.casey2@va.gov).
- II. **SSI/SSDI Outreach, Access, and Recovery (SOAR) initiative**
 - The SOAR effort in Pennsylvania is an initiative designed to increase access to SSI/SSDI for eligible adults who are experiencing or at risk of homelessness and have a mental illness, medical impairment, and/or a co-occurring substance use disorder. For information and contact information, see <http://soarworks.prainc.com/states/pennsylvania>.
- III. **Public Defender Resources**
 - Project Jericho program was created to serve individuals living with serious mental illness and substance use disorders who were cycling repeatedly through the justice system. The Jericho Project builds links to community treatment and services that are tailored to the particular needs of the incarcerated client. The Jericho team is composed of specialists from both the Shelby County Public Defender’s Office and a local mental health services provider. For more information, please see <http://defendshelbyco.org/the-jericho-project/>
 - Jennifer Johnson JD, Criminal Defense Attorney in San Francisco Behavioral Health Court
 - See column in recent GAINS Center e-newsletters
 - <http://gainscenter.samhsa.gov/eNews/march15.html>
- IV. **Otis Nash, Veteran Service Unit Project Manager, PADO**
 - Phone: 717-728-0392 /Email: c-onash@pa.gov
- V. **County Reinvestment Initiatives (best practices at a local level)** --- This Office of Justice Programs has several resources about using Justice Reinvestment strategies at a local level: <https://www.bja.gov/programs/justicereinvestment/resources.html>
- VI. **County of Northampton Department of Corrections Strategic Plan for Reentry**
 - <https://corrections.northamptoncounty.org/PhotoGallery/Stategic%20Plan%20For%20Reentry.pdf>
- VII. **Probation Research**
 - "Probation, Mental Health, and Mandated Treatment" (Skeem et al, 2006)

A large number of probationers with mental illness (PMIs) are under supervision in the United States. In this national survey, we compared the supervision approaches of a matched sample of 66 specialty mental health and 25 traditional probation agencies. The prototypic specialty agency has five key features that distinguish it from the traditional model: (a) exclusive mental health caseloads, (b) meaningfully reduced caseloads, (c) sustained officer training, (d) active integration of internal and external resources to meet PMIs’ needs, and (e) problem-solving strategies as the chief means for addressing treatment noncompliance. Probation supervisors perceived these specialty features as “very useful” and perceived specialty agencies as more

effective than traditional ones for PMIs. However, the most important feature of the prototypic specialty agency may also be the most endangered: reduced caseloads. Implications for research and practice are presented.

- http://www.pacenterofexcellence.pitt.edu/document_libraryint.html#sequential5

VIII. Public Defender Casework – Franklin County

- Assigned to work exclusively with individuals with treatment needs
- Initiates contact during the preliminary hearing
- Provides linkage to mental health, substance abuse, and sex offender treatment options
- Average caseload: 30 to 35 individuals per month
- Most common treatment need: substance abuse treatment
- Contact:
 - Stephanie Mellott, Public Defender Case Worker
Email: samellott@co.franklin.pa.us
Telephone: 717-261-3863

Appendix C: CCCF Data Collection

The information provided below is for the period March 1, 2014 through February 28, 2015 and was collected from a new offender management system adopted by the Centre County Correctional Facility in February 2014.

JAIL BOOKINGS				
<i>How many people are identified as having mental health issues?</i>				
By jail booking staff	394			
While incarcerated (by corrections officers, health staff or others)	30			
During mobilization for release	0			
How many people are held for forensic review?	0			
CROSS TABULATION OF MULTI-SYSTEM DATE				
<i>For the entire population of persons booked into jail during the identified time period (open or closed cases): Out of 1,092 individuals (some duplicated/had one or more bookings) committed to the Centre County Correctional Facility for the indicated time period.</i>				
How many were known to publicly-funded mental health system?	186			
Acute crisis services?	0			
Long-term service enrollment?	186			
How many were known to publicly funded substance abuse treatment system?	352			
Community-based	352			
Detoxification services	0			
Residential	0			
ADDITIONAL JAIL/OFFENSE-RELATED INFORMATION				
<i>For those who are identified as persons with mental health, substance abuse or developmental disabilities (by jail, other criminal justice, or treatment systems)</i>				
Nature of the charges *In time range 3/1/14-2/28/15	ID	MH	SA	Co
*Number of individuals in category (633 total)	15	130	208	280
Misdemeanors	5	54	124	156
Felonies	9	62	62	99
Violent behavior	6	43	34	54
Violations of probation / parole	3	8	65	81
Frequency	2.40	1.83	3.13	3.38
How many arrests / bookings per person? (average) *lifetime				
Length of stay in the jail for each episode of incarceration (average) *shown in days, lifetime	181.87	115.50	248.92	301.03
DISCHARGE / REENTRY				
How many people left the jail with financial benefits or entitlements in place?	unknown			
How many people left the jail with a shelter as the identified residence?	unknown			
How many people had no known residence?	unknown – likely only those who maxed out			

How many people left the jail with an appointment at a mental health or other treatment service?	31 – MH 68 – D&A (ESTIMATED)
How many people with mental illness had contact with a helping professional from the community to facilitate reentry?	0

ID = Intellectual Disability (includes co-occurring MH and SA)

MH = Mental Health Only

SA = Substance Abuse Only

Co = Co-morbid Mental Health and Substance Abuse

Appendix D: CIT Data Collection

Figure 1: CIT Training Totals: Breakdown Per Department/Agency

<i>Department/Agency</i>	<i>2011</i>	<i>2012</i>	<i>2013</i>	<i>2014</i>	<i>2015</i>	<i>Total</i>
State College PD	5	7	4	5	4	25/(26)
Ferguson Twp PD	3	3	2	2	1	11/(13)
Penn State PD	9	10	9	3	1	32/(33)
Patton Twp PD	6	3	2	2	0	13
Bellefonte PD	1	0	0	3	0	4
Spring Twp PD	2	0	0	0	0	2
CCCF	4	2	4	6	2	18/(20)
LifeLink	2	1	3	2	3	11
Probation/Parole	2	3	1	2	1	9
Dispatch	6	5	4	2	3	20
MDJ	0	1	0	0	0	1
PSU (dispatch)	0	0	0	3	1	4
MH/ID/EI-D&A	1	0	0	0	0	1/(2)
UCBH	0	3	2	1	2	8/(9)
MNMC Security	1	0	0	0	0	1
State Probation/Parole	0	1	0	0	1	2
SCI-Rockview	0	1	0	0	0	1
PA DOC-Security	0	1	0	0	0	1
Seven Mountains EMS	0	0	1	0	0	1
MPOETC	0	0	1	0	0	1
PSP	0	0	1	0	0	1
Pleasant Gap EMS	0	0	1	0	0	1
FTPD Administrative Asst	0	0	0	0	1	1
Penns Valley EMS	0	0	0	0	1	1
University Ambulance	0	0	0	1	0	1
*Lewistown PD	0	0	1	0	0	1
*Blair Co Sheriff Dept	0	0	0	1	0	1
*PSU Altoona PD	0	0	0	1	0	1
*Juniata Valley MH	0	0	0	1	0	1
*Mifflin Co Probation	0	0	0	1	0	1
*Old Lycoming Co PD	0	0	0	1	0	1
*Lycoming Co DA	0	0	0	1	0	1
*Loudoun Co Sheriff Dept	0	0	0	1	0	1
Totals	42	41	36	39	21	179/(187)
* = Out of county personnel who have been Centre County Trained						
() = Indicates total number trained including those trained through Laurel Highlands CIT						

Figure 2: CIT Calls 2010-2015

<i>Department</i>	<i>2011 Calls</i>	<i>2012 Calls</i>	<i>2013 Calls</i>	<i>2014 Calls</i>	<i>2015 Calls</i>	<i>Total CIT Calls</i>	<i>Percentage of CIT Calls</i>
State College	59	49	36	37	17	198	30.00%
Ferguson Twp	23	50	58	67	17	215	32.60%
PSU	9	29	28	42	13	121	18.30%
Patton Twp	0	13	16	11	0	40	6.00%
Bellefonte	8	3	3	4	1	19	2.80%
Spring Twp	0	0	1	0	1	2	0.30%
CCCF	5	7	6	16	2	36	5.40%
LifeLink	1	0	0	0	0	1	0.10%
Probation/Parole	1	0	0	0	0	1	0.10%
Dispatch	2	10	7	2	1	22	3.30%
MDJ	0	3	0	0	0	3	0.40%
TOTALS:	108	164	155	179	52	658	

Figure 3: CIT Data Tracking 2010-2015

	<i>2011</i>	<i>2012</i>	<i>2013</i>	<i>2014</i>	<i>2015</i>	<i>Total</i>	<i>Percentage</i>
Number of Arrests	3	9	4	3	0	19	2.80%
Injuries to Officers	0	1	0	0	0	1	0.10%
Injuries to Consumers	0	0	0	0	0	0	0%
Can Help Contacts	34	56	63	66	9	228	34.60%
Juvenile Contacts	2	10	14	16	1	43	6.50%
Veteran Contacts	2	3	6	4	2	17	2.50%
PSU Student Contacts	17	35	40	45	16	153	23.20%
Officers Trained	42	41	36	39	21	179	
CIT-Youth Trained	0	0	0	20	0	20	



CRISIS TRACKING FORM

Centre County Crisis Intervention Team



Date of Incident _____ 20____	Day of week _____	Time _____
Location of Incident _____		Incident # _____
Police Department _____		Officer of scene/Badge # _____
CIT Officer present? Yes <input type="checkbox"/> No <input type="checkbox"/>		Was a CIT Officer called if not present? Yes <input type="checkbox"/> No <input type="checkbox"/>

Consumer Name _____ **Age** _____ **Gender** M F
Address (check if same as incident) _____ **City** _____
State _____ **Zip** _____ **Phone** _____ **Race** _____
Nature of Incident _____

<p>Threats/Violence/Weapons</p> <p>Threat of violence toward:</p> <p><input type="checkbox"/> Self (Consumer)</p> <p style="padding-left: 20px;"><input type="checkbox"/> Suicide threat</p> <p style="padding-left: 20px;"><input type="checkbox"/> Suicide Attempt:</p> <p>Method: _____</p> <p><input type="checkbox"/> Law Enforcement Officer</p> <p><input type="checkbox"/> Other, <i>specify</i>: _____</p> <p><input type="checkbox"/> No threat observed</p> <p><input type="checkbox"/> Weapons Involved?</p> <p style="padding-left: 20px;"><input type="checkbox"/> Yes <input type="checkbox"/> No</p> <p>Type of weapon (check all that apply)</p> <p><input type="checkbox"/> Knife <input type="checkbox"/> Firearm</p> <p><input type="checkbox"/> Other, <i>specify</i>: _____</p>	<p>Incident Injuries</p> <p><input type="checkbox"/> To Consumer</p> <p style="padding-left: 20px;"><input type="checkbox"/> Self-inflicted</p> <p style="padding-left: 20px;"><input type="checkbox"/> By Law Enforcement</p> <p style="padding-left: 20px;"><input type="checkbox"/> Other</p> <p><input type="checkbox"/> To Law Enforcement Officer</p> <p style="padding-left: 20px;"><input type="checkbox"/> By Consumer</p> <p style="padding-left: 20px;"><input type="checkbox"/> By Other</p> <hr/> <p>Medications Prescribed?</p> <p><input type="checkbox"/> Yes <input type="checkbox"/> No <input type="checkbox"/> Don't know</p> <p>Medication Compliance?</p> <p><input type="checkbox"/> Yes <input type="checkbox"/> No <input type="checkbox"/> Don't know</p> <hr/> <p>Mental Illness Reported?</p> <p><input type="checkbox"/> Yes, <i>specify</i> _____</p> <p><input type="checkbox"/> No</p>	<p>Behaviors Evident at Time of Incident (check all that apply)</p> <p><input type="checkbox"/> Agitated (pacing, yelling)</p> <p><input type="checkbox"/> Belligerent or Uncooperative (angry/hostile)</p> <p><input type="checkbox"/> Depressed</p> <p><input type="checkbox"/> Delusions (paranoia, believing things that are not real)</p> <p><input type="checkbox"/> Disoriented/Confused</p> <p><input type="checkbox"/> Disorganized Speech</p> <p><input type="checkbox"/> Hallucinations (hearing, seeing, touching or tasting things that are not there)</p> <p><input type="checkbox"/> Manic (elevated mood, pressured speech)</p> <p><input type="checkbox"/> Self-Mutilation</p> <p><input type="checkbox"/> Other _____</p>
---	--	--

<p>Disposition</p> <p><input type="checkbox"/> No Action/resolved on scene</p> <p><input type="checkbox"/> CAN HELP called to scene</p> <p><input type="checkbox"/> Taken to ER for evaluation</p> <p><input type="checkbox"/> Hospitalization</p> <p><input type="checkbox"/> Outpatient Referral</p> <p><input type="checkbox"/> Released for family/friend</p> <p><input type="checkbox"/> Arrest</p> <p><input type="checkbox"/> Incarceration</p> <p><input type="checkbox"/> TRT called</p> <p><input type="checkbox"/> Other: _____</p>	<p>Use of Force</p> <p><input type="checkbox"/> None <input type="checkbox"/> Open Hand <input type="checkbox"/> Taser <input type="checkbox"/> Baton <input type="checkbox"/> Spray</p> <p><input type="checkbox"/> Firearm <input type="checkbox"/> Handcuffs <input type="checkbox"/> Other: _____</p> <hr/> <p>Check all that apply to Consumer:</p> <p>PSU Student? <input type="checkbox"/> Yes <input type="checkbox"/> No</p> <p>Armed Forces Veteran? <input type="checkbox"/> Yes <input type="checkbox"/> No <input type="checkbox"/> Unknown</p> <p>Homeless/Transient? <input type="checkbox"/> Yes <input type="checkbox"/> No</p> <p>Under Influence of: <input type="checkbox"/> Drugs <input type="checkbox"/> Alcohol <input type="checkbox"/> Unknown</p> <p>Wants follow-up services with CAN HELP? <input type="checkbox"/> Yes <input type="checkbox"/> No</p> <hr/> <p>(Coordinator to complete) Forward to CAN HELP <input type="checkbox"/></p> <p>Date _____ Time _____</p>
---	---



CRISIS TRACKING FORM – CORRECTIONAL FACILITY

Centre County Crisis Intervention Team



Date of Incident _____ 20__	Day of week _____	Time _____
Location of Incident _____		CIT Officer: _____
CIT Officer present? Yes <input type="checkbox"/> No <input type="checkbox"/>	Was a CIT Officer called if not present? Yes <input type="checkbox"/> No <input type="checkbox"/>	

Consumer Name _____ **Booking #** _____ **Age** _____ **Gender** M F
Address (check if facility) _____ **City** _____
State _____ **Zip** _____ **Phone** _____ **Race** _____
Nature of Incident _____

<p>Threats/Violence/Weapons Threat of violence toward:</p> <p><input type="checkbox"/> Self (Consumer)</p> <p style="padding-left: 20px;"><input type="checkbox"/> Suicide threat</p> <p style="padding-left: 20px;"><input type="checkbox"/> Suicide Attempt:</p> <p>Method: _____</p> <p><input type="checkbox"/> Staff</p> <p><input type="checkbox"/> Other, <i>specify</i>: _____</p> <p><input type="checkbox"/> No threat observed</p> <p><input type="checkbox"/> Weapons Involved?</p> <p style="padding-left: 20px;"><input type="checkbox"/> Yes <input type="checkbox"/> No</p> <p>Type of weapon (check all that apply)</p> <p><input type="checkbox"/> Edged <input type="checkbox"/> Blunt</p> <p><input type="checkbox"/> Other, <i>specify</i>: _____</p>	<p>Incident Injuries</p> <p><input type="checkbox"/> To Consumer</p> <p style="padding-left: 20px;"><input type="checkbox"/> Self-inflicted</p> <p style="padding-left: 20px;"><input type="checkbox"/> Staff incident</p> <p style="padding-left: 20px;"><input type="checkbox"/> Other</p> <p><input type="checkbox"/> To Law Enforcement Officer</p> <p style="padding-left: 20px;"><input type="checkbox"/> By Consumer</p> <p style="padding-left: 20px;"><input type="checkbox"/> By Other</p> <hr/> <p>Medications Prescribed?</p> <p><input type="checkbox"/> Yes <input type="checkbox"/> No <input type="checkbox"/> Don't know</p> <p>Medication Compliance?</p> <p><input type="checkbox"/> Yes <input type="checkbox"/> No <input type="checkbox"/> Don't know</p> <hr/> <p>Mental Illness Reported?</p> <p><input type="checkbox"/> Yes, <i>specify</i> _____</p> <p><input type="checkbox"/> No</p>	<p>Behaviors Evident at Time of Incident (check all that apply)</p> <p><input type="checkbox"/> Agitated (pacing, yelling)</p> <p><input type="checkbox"/> Belligerent or Uncooperative (angry/hostile)</p> <p><input type="checkbox"/> Depressed</p> <p><input type="checkbox"/> Delusions (paranoia, believing things that are not real)</p> <p><input type="checkbox"/> Disoriented/Confused</p> <p><input type="checkbox"/> Disorganized Speech</p> <p><input type="checkbox"/> Hallucinations (hearing, seeing, touching or tasting things that are not there)</p> <p><input type="checkbox"/> Manic (elevated mood, pressured speech)</p> <p><input type="checkbox"/> Self-Mutilation</p> <p><input type="checkbox"/> Other _____</p>
<p>Disposition</p> <p><input type="checkbox"/> No Action/resolved verbally</p> <p><input type="checkbox"/> CAN HELP called</p> <p><input type="checkbox"/> Extraction or use of force</p> <p><input type="checkbox"/> Suicide watch</p> <p><input type="checkbox"/> Outside Medical Treatment</p> <p><input type="checkbox"/> Other: _____</p>	<p>Use of Force</p> <p><input type="checkbox"/> None <input type="checkbox"/> PPCT <input type="checkbox"/> Taser <input type="checkbox"/> Baton <input type="checkbox"/> OC Spray</p> <p><input type="checkbox"/> Pepperball <input type="checkbox"/> Restraint chair <input type="checkbox"/> Other: _____</p> <hr/> <p>Check all that apply to Consumer:</p> <p>PSU Student? <input type="checkbox"/> Yes <input type="checkbox"/> No</p> <p>Armed Forces Veteran? <input type="checkbox"/> Yes <input type="checkbox"/> No</p> <p>Homeless/Transient? <input type="checkbox"/> Yes <input type="checkbox"/> No</p> <p>Under Influence of: <input type="checkbox"/> Drugs <input type="checkbox"/> Alcohol <input type="checkbox"/> Unknown</p> <p>Wants follow-up services with CAN HELP? <input type="checkbox"/> Yes <input type="checkbox"/> No</p> <hr/> <p><i>(Coordinator to complete)</i></p> <p>Forward to CAN HELP <input type="checkbox"/> Date _____ Time _____</p>	



CRISIS DATA SHEET
9-1-1 VERSION
Centre County Crisis Intervention Team



INCIDENT

Date: _____ Time: _____
Location: _____
CAD Event Number: _____
Police Department: _____ Officer: _____

COMMUNICATIONS CENTER

PST Answering the Call: _____ CIT Certified? YES NO
If not certified, was the call transferred to a CIT PST? YES NO
If YES, CIT Certified PST: _____
If NO, why? None On Duty CIT PST Unavailable Other _____

Is the jurisdictional police agency CIT trained? YES NO *(If NO, skip to Call Details)*
Was the call specifically assigned to a CIT Officer? YES NO
If not, was a CIT Officer subsequently requested? YES NO Responded? YES NO

CALL DETAILS

Nature of the Call (briefly) _____

Was the caller the individual in crisis? YES NO
If Yes, was the caller/consumer a known frequent caller? YES NO

Threat Assessment: No Threat Voiced
 Suicide Threat Threat Voiced to Others
 Suicide Attempt Attempt to Harm Others
 Threatened Use of a Weapon

Submitted By: _____ Shift Supervisor: _____

Appendix E: CCCF Programs Schedule

COLOR KEY:

PRIDE

CHOICES

D&A related

Education related

Faith based

Mental Health

Other

Monday

1. Thinking For a Change-CHOICES 1 8:30-9:40 am
2. Job Skills-PRIDE 1 8:30-9:40 am
3. Job Skills-CHOICES 1 & 2 9:50-11:00 am
4. Job Skills-PRIDE 2 12:50-2:00 pm
5. Alcohol and Other Drugs-CHOICES 2 12:50-2:00 pm
6. Alcohol and Other Drugs-PRIDE 2 2:10-3:20 pm
7. Thinking For a Change-PRIDE 1 9:50-11:00 am
8. AA 6:30-7:30 pm
9. Yoke Fellowship (males) 6:30-?
10. IYP 8:00 am-10:00 am
11. Mental Health Treatment Group (males) 8:30 am
12. Mental Health Treatment Group (females) 10:00 am

Tuesday

1. Alcohol and Other Drugs-CHOICES 1 8:30-9:40 am
2. Alcohol and Other Drugs-PRIDE 1 10:00-11:10 am
3. Thinking For a Change-CHOICES 2 12:50-2:00 pm
4. Thinking For a Change-PRIDE 2 2:10-3:20 pm
5. DUI Court class 6:00-8:00 pm
6. In Prison Community Bible Study 6:30/7:00-?
7. GED 9:00 am-?
8. IYP 8:00 am-10:00 am

Wednesday

1. Domestic Violence-CHOICES 1 & 2 8:30-9:40 am
2. Parenting –PRIDE 1 & 2 8:30-9:40 am
3. Parenting-CHOICES 1 & 2 9:50-11:00 am
4. Domestic Violence-PRIDE 1 & 2 9:50-11:00 am
5. Creative Writing 6:00-8:00 pm

- | | |
|--------|------------------|
| 6. D&A | 10:00 am/2:00 pm |
| 7. IYP | 8:00 am-10:00 am |
| 8. GED | 12:30 pm-3:00 pm |

Thursday

- | | |
|---|------------------|
| 1. Thinking For a Change-PRIDE 1 | 8:30-9:40 am |
| 2. Thinking For a Change-CHOICES 1 | 9:50-11:00 am |
| 3. Alcohol and Other Drugs-CHOICES 2 | 12:50-2:00 pm |
| 4. Alcohol and Other Drugs-PRIDE 2 | 2:00-3:20 pm |
| 5. Walking Your Faith Bible Study | 6:30-8:00 pm |
| 6. Bible Study | 6:30-8:30 pm |
| 7. Women's Walking Your Faith Bible Study (females) | 6:30-? |
| 8. Women's Resource Center w/ Counselor (every 1 st & 3 rd Thursday) (females)
8:00-9/10:00 am | |
| 9. D&A-Crossroads | 10 am-? |
| 10. D&A-Crossroads | 1:00 pm-? |
| 11. D&A-Crossroads | 2:30 pm-? |
| 12. IYP | 8:00 am-10:00 am |

Friday

- | | |
|--|------------------|
| 1. IYP | 8:00 am-10:00 am |
| 2. Alcohol and Other Drugs-PRIDE 1 | 8:30-9:40 am |
| 3. Alcohol and Other Drugs-CHOICES 1 | 9:50-11:00 am |
| 4. Thinking For a Change-CHOICES 2 | 12:50-2:00 pm |
| 5. Thinking For a Change-PRIDE 2 | 2:10-3:20 pm |
| 6. Juma Service –currently not available | 1:00-2:00 |
| 7. Gideon Group Bible Study (separate classes for men & women) | 6:00 pm |

Saturday

None

Sunday

- | | |
|---|------------------|
| 1. Church (males) | 8:00-8:45 |
| 2. Church (males) | 9:30 am-10:30 am |
| 3. Church (females) | Various times |
| 4. Church (3 rd Sunday of the month) | 1:30 pm |

Work Programs

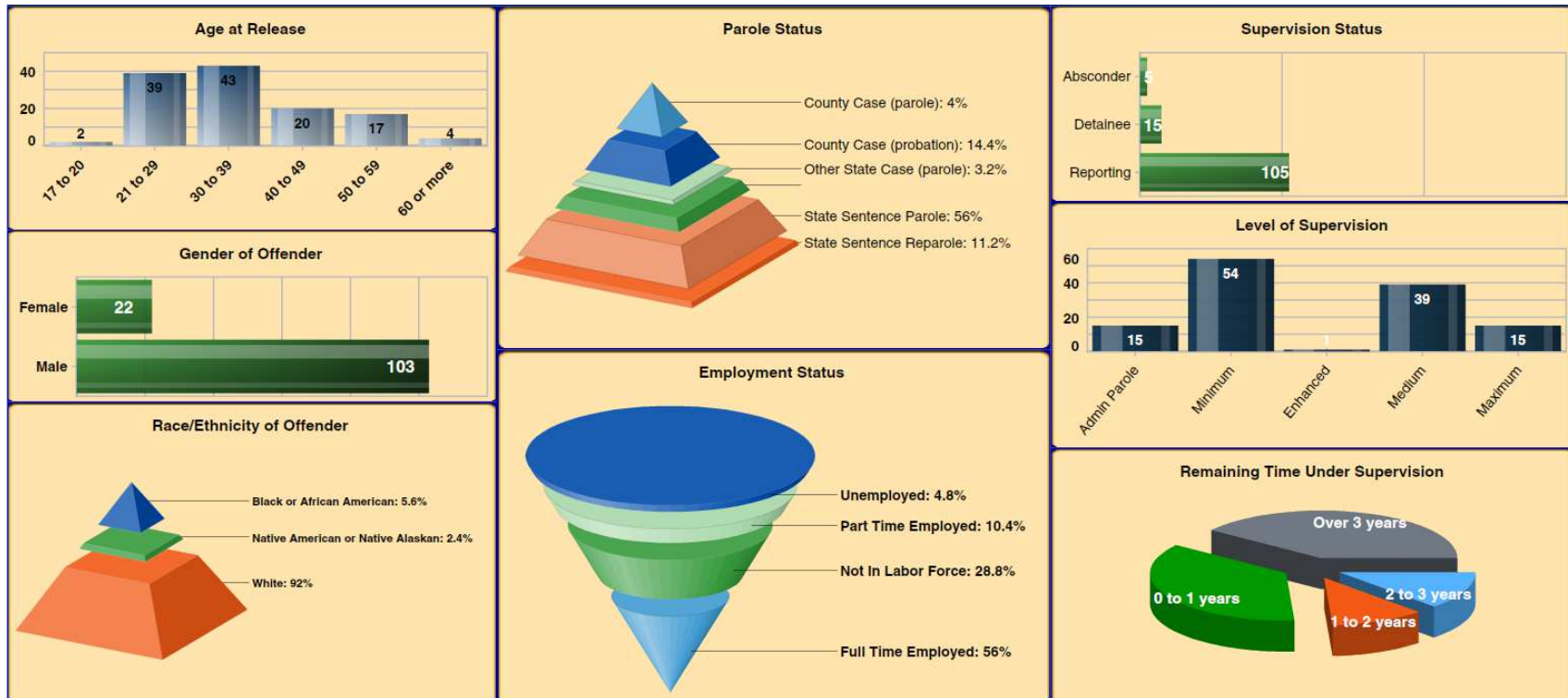
- Work release—hourly paid job outside the facility
- Inside Volunteer Trustees
 - Unit trustee, laundry, maintenance, hygiene, kitchen,
- Outside Volunteer Trustee Work

- Centre Peace, County Maintenance, YMCA, Christmas Celebration, cemetery grass cutting, on grounds
- other duties as assigned

Other Programming

- Prison Society
- Centre County TASC
- Psychiatrist
- Centre County MHID Forensic Case Manager
- Can-Help (crisis only)

Appendix F: PA State Probation and Parole



Source: The Pennsylvania Commission on Crime and Delinquency (PCCD) CJAB Dashboard

Appendix G: Veteran Reentry Search Service (VRSS)

Department of Veterans Affairs

Veterans Re-Entry Search Service (VRSS)

Correctional Facility/Courts/Court Systems



Quick Overview

1. Correctional Facility/Court VRSS – Getting Started

1.1. Access Information and Logging On

Business users can use any web browser to access VRSS. The URL for VRSS is <http://vrss.va.gov>. The following information details how to log-in and register a new Correctional Facility/Court account. After typing in the URL, users will come to the **Correctional Facility/Court Welcome Page**, which displays basic home page information as well as the VRSS Terms and Conditions of Use.

1.1.1. Correctional Facility/Court Welcome Page

The **Correctional Facility/Court Welcome Page** gives the business user the option of:

- Viewing program information, announcements, deadlines, instructions, or any information that is relevant to the VRSS application and its process.
- Reading and accepting the VRSS Terms and Conditions of Use (Section 3.1.2)
- Proceeding to the **Login Page** (after selecting the check box noting that the VRSS Terms and Conditions of Use were read and accepted) by clicking on the **Click Here to Login** hyperlink.

UNITED STATES
DEPARTMENT OF VETERANS AFFAIRS

Search All VA Web Pages
Search
Open Advanced Search

Home Veteran Services Business About VA Media Room Locations Contact Us

Welcome to the Veterans Re-Entry Search Services

Home Page information goes here. This can be information about the program, instructions, links to more information etc..

Veterans Reentry Search Service (VRSS) - Terms and Conditions of Use

This secure Web site enables correctional and other criminal justice system entities to identify inmates or defendants who have served in the United States (U.S.) military. The U.S. Department of Veterans Affairs (VA) makes this service available to facilitate its own direct outreach to these Veterans, and to inform the development of Veteran-specific programs in the criminal justice system. VA has authorized your access to this site because you represent a correctional or other criminal justice system entity that seeks to identify Veterans in its inmate or defendant population. To use the site, you will provide the following information on the individuals whose history of military service you wish to inquire about:

1. Name
2. Social Security Number (if available)
3. Race/Ethnicity
4. Date of Birth
5. Booking number or Prison ID number
6. Facility Name/Location
7. Parole or Release Date

VA will use the information you provide to identify individuals for whom it has a record of military service. Once this process of identification is complete (please allow at least INTERVAL), you will be able to access on this secure Web site a list of the booking numbers or prison ID numbers of individuals with a record of military service. VA will also provide its

I have read and accept the Terms and Conditions of Use

[Click here to login](#)

1.1.2. VRSS Terms and Conditions of Use

The VRSS Terms and Conditions of Use are the following:

This secure Web site enables correctional and other criminal justice system entities to identify inmates or defendants who have served in the United States (U.S.) military. The U.S. Department of Veterans Affairs (VA) makes this service available to facilitate its own direct outreach to these Veterans, and to inform the development of Veteran-specific programs in the criminal justice system. VA has authorized your access to this site because you represent a correctional or other criminal justice system entity that seeks to identify Veterans in its inmate or defendant population. To use the site, you will provide the following information on the individuals whose history of military service you wish to inquire about:

1. Name
2. Social Security Number (if available)
3. Race/Ethnicity
4. Date of Birth
5. Booking number or Prison ID number
6. Facility Name/Location
7. Parole or Release Date

VA will use the information you provide to identify individuals for whom it has a record of military service. Once this process of identification is complete (please allow at least INTERVAL), you will be able to access on this secure Web site a list of the booking numbers or prison ID numbers of individuals with a record of military service. VA will also provide its outreach staff with sufficient information to locate and contact individuals identified through this process.

VA makes the following assurances about its use and handling of such data:

1. **Data Protection and System Security:** VA will protect PII on the VRSS in accordance with all applicable federal laws and regulations, VA policies and procedures, and National Institute of Standards and Technology (NIST) requirements and guidelines, including, but not limited to, the Privacy Act (5 U.S.C. § 552a), the Federal Information Security Management Act of 2002 (FISMA, 44 U.S.C. §§ 3541-49), 38 U.S.C. § 5701, and VA Directive and Handbook 6500.
2. **Breach Notification.** VA complies with federal statutes and regulations in reporting data breach and loss of PII, in particular 38 U.S.C. §§ 5721-27.
3. **Administrative Safeguards.** VA will restrict access to the data transmitted to it via this Web site to only those authorized employees and officials who need it to perform their official duties in connection with the uses of the information described above.
4. **Limited Use.** VA will use data transmitted to it via this Web site to identify individuals for whom it has a record of military service, and for no other purpose. VA will not use the information in any determination of benefits nor will the PII be added to a Privacy Act system of records.
5. **Disposition of Data.** VA may retain data pertaining to your use of the VRSS for lawful purposes, such as to perform tests and to conduct and facilitate audits of the use of the VRSS portal.

VA will dispose of PII and data pertaining to your use of the VRSS portal in accordance with NARA approved records control schedules.

1.1.3. Correctional Facility/Court Login Page

The screenshot shows the top navigation bar of the Department of Veterans Affairs website. It includes the text "UNITED STATES DEPARTMENT OF VETERANS AFFAIRS" and the VA seal. A search bar is located in the top right corner. Below the navigation bar, the main content area contains a login form with the following elements:

- A heading: "Please enter your username and password to login"
- Two input fields: "Username" and "Password"
- A "Login" button
- Two hyperlinks: "Register a new account" and "I forgot my password"
- A footer link: "Click here for the VRSS User Guide"

- Click the **Login** button to login.
- After the user has logged in, he or she will be directed to the **Veterans Re-Entry Data Import Tools Page**.
- If the business user has not already registered:
 - Click the **Register a New Account** hyperlink.
- If the business user has forgotten his/her password:
 - Click the **I Forgot My Password** hyperlink.

1.1.4. Correctional Facility/Court Registration Page

If the business user selects **Register a New Account**, he or she will be directed to the **Correctional Facility/Court User Account Registration** page. On this page, the user will be prompted to enter account information, select a Correctional System and Correctional System Type, create a new username, and create a password.

UNITED STATES DEPARTMENT OF VETERANS AFFAIRS

Search All VA Web Pages [Open Advanced Search](#)

[Home](#) [Veteran Services](#) [Business](#) [About VA](#) [Media Room](#) [Locations](#) [Contact Us](#)

Correctional Facility User Account Registration

Please complete the following registration form to request an account for the Veterans Re-Entry Search System. After submitting this information, your request must be reviewed by a VA Administrator. You will receive an email confirmation when your account has been approved.

Account Information

Please complete the following fields to register for a Repository account.
Note: All fields are required.

First Name:

Last Name:

Email:

Phone:

Correctional System Selection

Correctional System Type:

Correctional System:

Need Help?

[Click here for Support](#)

Chris Marino: 215-842-2000 ext 4824



- Under **Account Information**, the user will be asked to enter:

Field Name	Description
First Name	First name of user requesting new account.
Last Name	Last name of user requesting new account.
Email Address	Email address of user requesting new account which will be used for automated notifications.
Phone Number	Phone number of user requesting new account.

- Under the **Correctional System/Court Selection** section, the user must select from one of the available Correctional System/Court Types and a Correctional/Court System. Once a user selects the Correction System/Court Type, options will appear for Correctional System/Court. If the user does not find their prison from the dropdown, they can select **Other** which will allow them to enter their own facility name.

Correctional System Selection

Correctional System Type

Correctional System

- Federal
- State
- County
- Municipal
- Other

Correctional System Selection

Correctional System Type

Correctional System

- Federal Prison Camp - Montgomery, Alabama
- Federal Correctional Institution - Phoenix, Arizona
- United States Penitentiary - Atwater California
- Federal Correctional Institution - Fremont Colorado
- Federal Correction Institution - Coleman, Florida
- United States Penitentiary - Atlanta, Georgia
- Metroplitan Correctional Center - Chicago, Illinois
- United States Penitentiary - Terre Haute, Indiana
- Unites States Penitentiary - Leavenworth, Kansas
- Other

Create a New Username

Please create a username to log in

Note: Usernames must be between 4 and 16 characters in length and must not contain spaces or special characters.

Desired Username

- Under the **Create a New Username** section, the user will be asked to create a unique username that must be between 4 and 16 characters in length that also may not contain spaces or special characters.
- Under the **Create a New Password** section, the user will be asked to create a desired password between 8 and 20 characters in length that contains both uppercase and lowercase letters, and at least one number.
- When the user has entered all of the required information, he or she can select **Create Account** or **Cancel**. If the user selects **Cancel**, the user will be redirected to the **Correctional Facility/Court Welcome Page**.

Correctional System Selection

Correctional System Type

Correctional System

Other Correctional System

Create a New Username

Please create a username to log into your account.
Note: Usernames must be between 4 and 16 characters in length, and may not contain spaces or special characters.

Desired Username

Create a New Password

Please create a new password to log into your account.
Note: Passwords must be between 8 and 20 characters in length and contain both uppercase and lowercase letters, and at least one number.

Desired Password

Password not entered

Confirm Password

[VA Home](#) | [Privacy Policy](#) | [FOIA](#) | [Web Policies](#) | [No FEAR Act Data](#) | [Site Index](#) | [USA.gov](#) | [White House](#) | [National Resource Directory](#) | [Inspector General](#)

U.S. Department of Veterans Affairs - 810 Vermont Avenue, NW - Washington, DC 20420

Reviewed/Updated Date: September 1, 2010

Once a new user has registered, the page below will display that states the account registration has been submitted. A user will get an email via the email address provided once the approval is processed.

UNITED STATES
DEPARTMENT OF VETERANS AFFAIRS

Search All VA Web Pages [Open Advanced Search](#)

[Home](#) [Veteran Services](#) [Business](#) [About VA](#) [Media Room](#) [Locations](#) [Contact Us](#)

Thank You!

Your account registration has been submitted. You must next confirm your email address. An email message has been sent to DannyTosh@va.edu. Please check your email and click on the link to confirm your email address.

[Back to Login Page](#)
