

**EVALUATION OF THE
TRUETRACK® BLOOD
GLUCOSE MONITORING SYSTEM
BY HEALTHCARE PROFESSIONALS**

NIPRO
DIAGNOSTICS™

PURPOSE:

The purpose of this study was to gain feedback from diabetes healthcare professionals on the ease of use of the new TRUEtrack® Blood Glucose Monitoring System. A secondary objective was to gain an understanding of the role of diabetes healthcare professionals when recommending blood glucose monitors to their patients. The study was a blind, randomized trial in which participants were given a demonstration of the TRUEtrack® Blood Glucose Monitor and were provided the opportunity to get hands-on experience using the system. Participants then completed a survey to evaluate the features, design, and ease-of-use of the system.

METHODOLOGY:

At two national diabetes-education events, healthcare professionals who regularly spend time educating patients with diabetes were asked to evaluate the TRUEtrack® System. Participants were given a demonstration of the product, including coding the system and performing glucose testing. The participants were also given the opportunity to experience hands-on operation of the product. Those taking part were asked to complete a two-part survey that included questions regarding current blood glucose meter recommendation patterns, and questions to evaluate their experiences using the TRUEtrack® Blood Glucose Monitoring System. To eliminate study bias, none of the meters or test strips was labeled with the brand name or the manufacturer's name.

RESULTS AND DISCUSSION:

116 healthcare professionals completed the survey. The majority of respondents listed their profession as certified diabetes educator (76%), followed by nurse (17%), pharmacist (2%) and/or other healthcare professional (5%). 55% of respondents worked with diabetes patients in the hospital setting, followed by 23%

in the clinic setting, 9% independent practice, 7% physician practice, 3% managed care and 3% home healthcare settings. When educating patients with diabetes, the majority of respondents (96%) recommended blood glucose monitors and were involved in training patients on how to use the systems. The professional recommendation for a specific brand of meter was primarily driven by access to free meter samples for the patients. In fact, nearly half (46%) of healthcare professionals responded that more than three-quarters of patients left their offices with free meters. The most recommended meter by all respondents was the OneTouch® Ultra® (76%), followed by both ACCU-CHEK® Advantage® (61%) and TheraSense FreeStyle (61%), then Ascensia Elite® XL (50%). 22% of respondents agreed that they would recommend a store-brand meter for patients who required a more affordable system due to lack of health insurance coverage or limited personal financial resources.

Evaluation Of Ease Of Use Of TRUEtrack® System

During the hands-on experience with the system, participants were asked to perform the coding and testing procedures, and to complete the questionnaire. The majority of respondents (95%) rated the overall coding procedure for the meter as very easy/easy to perform. This evaluation included rating the legibility of the code numbers on both the test strip label and the meter display, and also the ease of opening the code chip package and inserting the code chip into the meter (Figure 1).



Figure 1

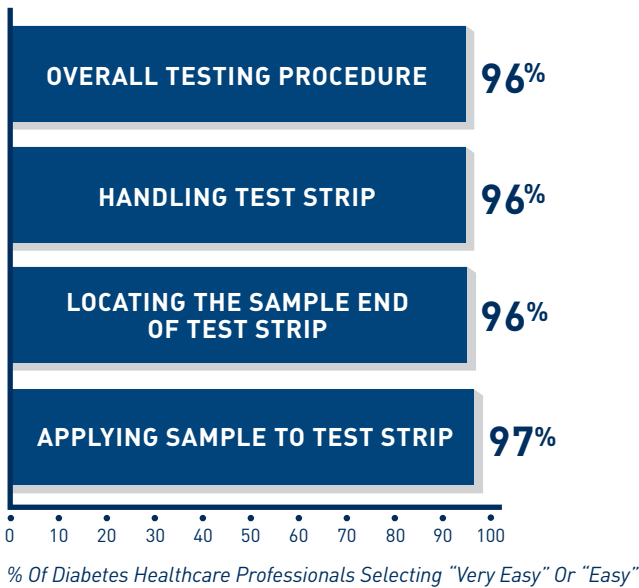


Figure 2

In order to avoid lancing for blood samples by participants, glucose control solution was used to perform the glucose testing procedure. The majority of the respondents (96%) rated the overall testing procedure as very easy/easy. This rating included handling the strip, locating the test strip sample end, and applying the sample. Nearly all respondents (96%) rated handling the test strip and locating the test strip sample end as very easy/easy. 97% of diabetes healthcare professionals rated applying a sample to the test strip as very easy/easy to perform (Figure 2).

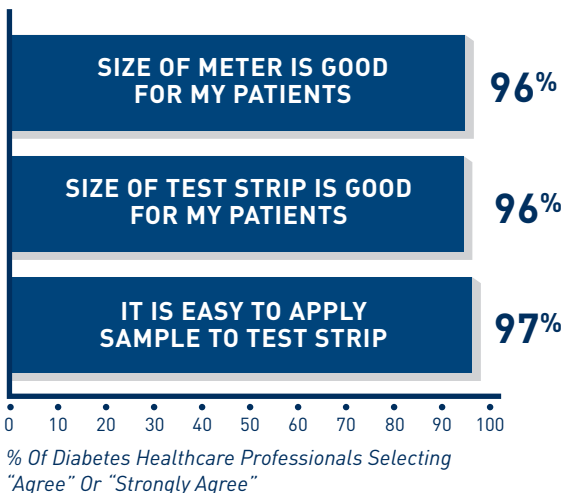


Figure 3

Evaluation Of Satisfaction With Features And Benefits Of The TRUEtrack® System

The second part of the survey asked healthcare professionals to answer questions regarding how strongly they agreed that the system design was good for their patients. They were asked to rate their opinions on the size of the meter and test strips, and the blood application process. 96% of diabetes professionals agreed that the size of the meter and size of the test strips were good for their patients. 97% of healthcare professionals believed that it would be easy for patients to apply a sample to the test strip (Figure 3).

The final part of the survey asked healthcare professionals to rate the quality of the system and whether they would recommend the system or a private label/store brand version of the system to their patients. The majority of healthcare professionals (96%) rated the overall quality of the system as excellent/good. 78% of healthcare professionals responded that they probably/definitely would recommend the system to their patients, and half (50%) of healthcare professionals agreed they would recommend a private label/store brand version of the system (Figure 4).

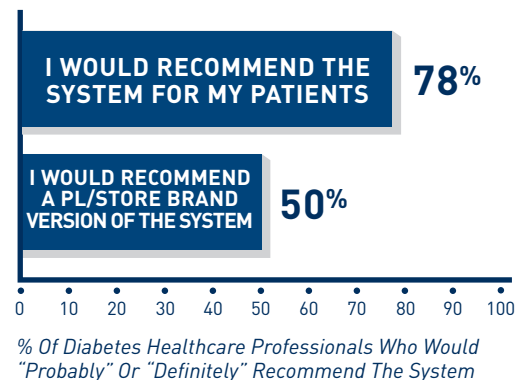


Figure 4

CONCLUSION:

Diabetes healthcare professionals were very satisfied with the features and benefits of the TRUEtrack® System, and gave it high ratings in terms of quality, design and ease of use for their patients. Healthcare professionals agreed that the size of the meter and test strips were good for their patients, and that applying blood to the test strip would be easy for their patients to perform. The majority of professionals (96%) rated the quality of the system as good to excellent. When asked if they would recommend the system, 78% responded with probably/definitely, and half of the diabetes healthcare professionals responded that they probably/definitely would recommend a private label brand of the system to their patients.