

ABSOLUTE AUCTION

SURPLUS LIQUIDATION



(2) OF (20)
HYDRAULIC
EXCAVATORS



WEDNESDAY, APRIL 18, 2012 - 9:00AM
Hackensack, New Jersey (Newark/NYC Area)



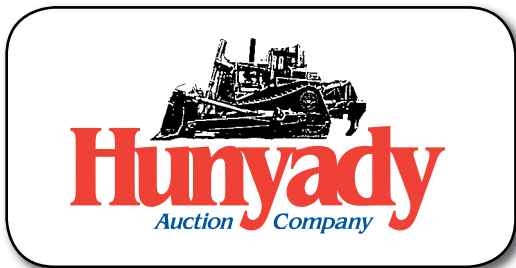
(3) OF (7) 4X4 EXTEND-A-HOES



(3) OF (4) IR SD-1000



(2) OF (6) CRAWLER TRACTORS



1440 COWPATH RD. • HATFIELD, PA 19440
215/361-9099 • Fax: 215/361-9212
www.hunyady.com

PRE-SORTED
FIRST CLASS MAIL
US POSTAGE
PAID
HAVERTOWN, PA
PERMIT #45





Notice: J. Fletcher Creamer & Son, Inc., one of the country's largest and most well respected contractors, has decided to sell at auction its surplus equipment. J. Fletcher Creamer & Son, Inc is known in the industry for their commitment to the highest quality construction services as well as their dedication to operating a well maintained fleet of equipment. Everything in the auction is owned by J. Fletcher Creamer and will positively sell to the highest bidder regardless of price!

Location: The auction will be held at 585 South River Street, Hackensack, NJ 07601

Remote Parking Sale Day/Shuttle Bus Service: The sale day parking area will be located at 24-38 East Broadway, Hackensack, NJ 07601.

Directions to sale day parking: INTERSTATE 80 WESTBOUND: From the "Local Exits" lane take Exit #66 (Hackensack/Hudson Street), after exiting merge onto East Kennedy Street and proceed (0.1) miles and turn left onto Hudson Street. Proceed on Hudson Street (0.4) miles and turn right onto East Broadway. Parking on left. • **INTERSTATE 80 EASTBOUND:** From the "Local Exits" lane take Exit #66 (Hackensack/Hudson Street), after exiting continue (0.1) miles and turn left onto Vreeland Avenue. Proceed on Vreeland Avenue (0.1) miles and turn left onto Hudson Street. Proceed on Hudson Street (0.5) miles and turn right onto East Broadway. Parking on left. Shuttle buses will run continuously between the remote parking area and sale site.

Sale Site Directions: TRAVELING INTERSTATE 95: Follow Interstate 95 to Interstate 80 Westbound. Once on Interstate 80 stay in the "Local Exits" lane and take Exit #66 (Hackensack/Hudson Street) After exiting merge onto East Kennedy Street and proceed (0.2) miles to South river Street and turn right. Continue on South River Street (0.6) miles to sale site on right.

TRAVELING INTERSTATE 80 EASTBOUND: Stay in the "Local Exits" lane and take Exit #66 (Hackensack/Hudson Street) After exiting continue (0.1) miles and turn left onto Vreeland Avenue, proceed on Vreeland Avenue (0.1) and turn right onto Hudson Street. Continue on Hudson Street (0.3) miles and turn left onto East Moonachie Road. Follow East Moonachie Road (0.1) miles and turn right onto South River Street. Follow South River Street (0.3) miles to sale site on right.

Terms: Payment in full is required on sale day by cash, certified funds, or check with a bank letter of guarantee. Sample letter of guarantee: "We hereby guarantee the payment of our customer _____ written on his account up to _____ dollars for purchases at your auction sale on April 18, 2012." All guaranteed checks should be made payable to Hunyady Auction Co.

Online Bidding: Live internet bidding will be provided by Proxibid. Proxibid will require a 2.5% internet provider service fee (capped at \$750) that will be charged for each item purchased online. All interested internet bidders are required to register with Proxibid 24 hours prior to the auction at www.proxibid.com/hunyady or call 877-505-7770

Sales Tax: Since this contractor is selling items not normally sold in the course of his business, the State of New Jersey considers this an isolated sale and does not require the auction company to collect sales tax.

Financing: Financing is available, please contact Susan (215) 361-9099 at the auction company for details.

Inspection: Items will be available for inspection beginning one week prior to the auction from 8:00AM to 5:00PM. The site will be closed Saturday and Sunday, April 14th and 15th

Removal: After complete payment, all sale items may be removed on sale day as long as the removal activity is not disruptive to the sale and only until 5:00 p.m. Items may also be removed Thursday and Friday, April 19th and 20th and Monday thru Wednesday, April 23rd thru April 25th, from 8:00 a.m. to 5:00 p.m. All items must be removed no later than Wednesday, April 25, 2012 at 5:00 p.m.

Airport Information: The area is serviced commercially through Newark International Airport and privately through Teterboro Airport (KTEB) (201)288-1775. Rental cars are available.

Motel Information: Ramada, 375 W Passaic St., Rochelle Park, NJ 07662, 201-845-3400 • Holiday Inn Hasbrouck Heights, 283 Route 17 South, Hasbrouck Heights, NJ 07604, 201-288-9600 • Crowne Plaza 401 South Van Brunt St., Englewood, NJ 07631 201-871-2020

Sale Site Phone (Beginning Monday, April 9th): (267) 446-3808 • Sale Site Fax: (888) 859-8958

MESSAGE BOARDS, LIGHT TOWERS, RADAR BOARDS, AND ATTACHMENTS

(2) 2006 & 2005 SOLARTEK MB4048, 24-character message board, power lift and angle, (4) manual stabilizers, and 225/75R15 tires. In good condition with good tires.

(3) 2005 & 2004 SOLARTEK MB3048, 24-character message board, power raise and angle, (4) manual stabilizers, and 225/75R15 tires. In good condition with good tires.

DISPLAY SOLUTIONS 340, s/n CS3340-033, 24-character message board, power raise and angle, (4) manual stabilizers, and 225/75R15 tires. In good condition with good tires.

2002 VERMAC PCMS1210QS, 24-character message board, power lift and angle, (4) manual stabilizers, and 225/75R15 tires. In good condition with good tires.

(5) 1998-1995 INGERSOLL-RAND L6-4MH Portable Light Towers, Kubota dsl, Leroy Somer generator, (4) lights, manual raise and lower, and 175.80D13 tires. In fair to good condition with good tires.

(2) 2005 & 2004 CONSAM SMTM-2 Portable Solar Powered Radar Boards, on-board chargers. In good condition.

JD 215 2-Gang Tow Behind Disc Harrow, s/n A00215F013334, 14"x22" discs and transport wheels. In good condition with good tires.



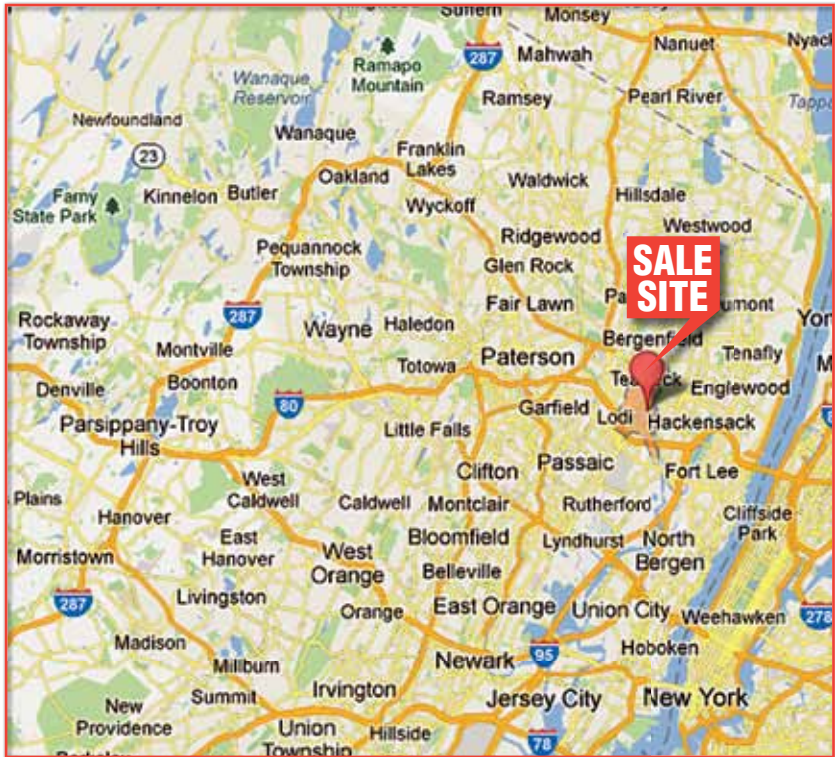
(1) OF (7) MESSAGE BOARDS



IR L64MH LIGHT TOWERS



(2) CONSAM RADAR BOARDS



(6) CRAWLER TRACTORS



'01 CAT D6M LGP

2000 CATERPILLAR D6M XL, s/n 3WN02004, Cat 3116 dsl, powershift trans, 6-way straight blade, drawbar, fingertip controls, ROPS canopy, and 24" SBG pads. In good condition with good undercarriage.

1998 CATERPILLAR D5M XL, s/n 6GN01044, Cat 3116 dsl, powershift trans, 6-way straight blade, differential steer, drawbar, ROPS canopy, and 22" SBG pads. In good condition with good undercarriage.



'00 CAT D6MXL



'95 CAT D3CXL SERIES III

1995 CATERPILLAR D3CXL Series III, s/n 6SL01090, Cat 3046 dsl, powershift trans, 6-way straight blade, tow hitch, ROPS canopy, and 16" SBG pads. In good condition with good undercarriage.

1998 KOMATSU D38P-1, s/n 085795, Komatsu dsl, powershift trans, 6-way straight blade, tow hitch, ROPS canopy, and 24" SBG pads. In good condition with good undercarriage.

SKID STEER LOADERS AND MILLING ATTACHMENT

2004 CATERPILLAR 268B, s/n LBA00306, Cat 3044C dsl, general purpose loader bucket, quick coupler, and auxiliary hydraulics. In good condition with good tires.

1996 GEHL SL5625, s/n 11233, dsl, auxiliary hydraulics and solid tires. In fair condition with fair to good tires.

24" Hydraulic Milling Attachment (Fits Gehl SL5625)



'03 CAT 420DIT

2001 CASE 580 Super M, s/n JJG0279188, Case 3.9L dsl, shuttle trans, general purpose loader bucket, 24" digging bucket, EROPS, 12-16.5 front and 19.5L-24 rear tires. In good condition with fair to good tires.

'01 CASE 580SM



(7) 4X4 TRACTOR LOADER EXTEND-A-HOES

2003 CATERPILLAR 420DIT, s/n BLN06276, Cat dsl, shuttle trans, hydraulic 4 in 1 loader bucket, 18" digging bucket, front hydraulic quick coupler, front auxiliary hydraulics, 48" fork attachment, EROPS, 340/80R18 front and 19.5-24 rear tires. In good condition with fair tires. (Fork Attachment Sold Separately)

1999 CASE 580 Super L, s/n JJG0273212, Case 3.9L dsl, shuttle trans, ACS hydraulic side dump bucket, front hydraulic quick coupler, front auxiliary hydraulics, 24" digging bucket, EROPS with ac, 12-16.5 front and 19.5Lx24 rear tires. In good condition with good tires. (Additional Asbury Hydraulic Side Dump Bucket Sold Separately)

(3) 1999-1998 CASE 580 Super L Series II, s/n JJG0270775, s/n JJG0259657, s/n JJG0266183, Case dsl, shuttle trans, hydraulic 4 in 1 loader buckets, digging buckets, EROPS, 12-16.5 front and 19.5L-24 rear tires. In good condition with good and fair to good tires.

1996 CASE 580 Super L, s/n JJG0198140, 3.9L dsl, shuttle trans, hydraulic 4 in 1 loader bucket, 24" digging bucket, EROPS, 12-16.5 front and 19.5-24 rear tires. In good condition with poor tires.



'98 CASE 580SL SERIES II

(6) RUBBER TIRED LOADERS AND FORK ATTACHMENTS

(Fork Attachments Sold Separately)



'02 CAT 966G

(3) 2001-1999 CATERPILLAR 950G, s/n 3JW02226, s/n 3JW01125, s/n 3JW00805, Cat 3126 dsl, powershift trans, hydraulic side dump buckets, fork attachments, hydraulic quick couplers, auxiliary hydraulics, EROPS with ac, and 23.5R25 tires. In good condition with good to very good, good, and fair to good tires.

2002 CATERPILLAR 938G, s/n 4YS02451, Cat 3126 dsl, powershift trans, Cat hydraulic side dump bucket, 72" fork attachment, Cat hydraulic quick coupler, auxiliary hydraulics, EROPS with ac, and 20.5-25 tires. In good condition with good tires.

'99 CAT 950G

(2) 2002 & 2001 CATERPILLAR 966G, s/n 3SW01614, s/n 3SW01048, Cat 3306 dsl, powershift trans, Cat hydraulic side dump buckets, fork attachments, Cat hydraulic quick couplers, auxiliary hydraulics, EROPS with ac, and 26.5R25 tires. In good condition with good tires.



'01 CAT 950G



END DUMPS



'04 VOLVO A35D

2004 VOLVO A35D, 35 Ton 6x6, s/n A35DV71283, Volvo dsl, powershift trans, heated dump body, tailgate, enclosed cab with ac, and 26.5R25 tires. In good condition with fair to good tires.

2005 VOLVO A30D, 30 Ton 6x6, s/n 73271, Volvo dsl, powershift trans, enclosed cab with ac. In good condition with good tires.

(20) HYDRAULIC EXCAVATORS

2006 KOMATSU PC400LC-7E0, s/n A87307, Komatsu dsl, heavy duty undercarriage, 15'10" dipper stick, JRB hydraulic quick coupler, 60" digging bucket, enclosed cab with ac, 177" crawlers, and 35.5" TBG pads. In good condition with good undercarriage.



'06 KOMATSU PC400LC-7E0

2006 KOMATSU PC400LC-7L, s/n A86743, Komatsu dsl, heavy duty undercarriage, 11' dipper stick, hydraulic beyond, JRB hydraulic quick coupler, digging bucket, enclosed cab with ac, 177" crawlers, and 35.5" TBG pads. In good condition with good undercarriage.



'06 KOMATSU PC400LC-7L

2003 KOMATSU PC400HD-6LM, s/n A85028, Komatsu dsl, 15'10" dipper stick, hydraulic beyond, JRB hydraulic quick coupler, 60" digging bucket, enclosed cab with ac, 177" crawlers, and 31.5" TBG pads. In good condition with good undercarriage.



'03 KOMATSU PC400HD-6LM

2006 CATERPILLAR 325C LCR, s/n BKW00414, Cat 3126 dsl, 10'6" dipper stick, hydraulic beyond, Cat hydraulic quick coupler, 48" digging bucket, enclosed cab with ac, 16'6" crawlers, and 33.5" TBG pads. In good condition with good undercarriage.



'06 CAT 325C LCR

2001 CATERPILLAR M320 Rubber Tired Excavator, s/n 6WL00725, Cat 3116T dsl, hydrostatic trans, 9' dipper stick, JRB hydraulic quick coupler, hydraulic beyond, digging bucket, EROPS with ac, and (4) hydraulic outriggers. In good condition with fair tires.



'01 CAT M320

(1) 2004 & (2) 2002 KOMATSU PC228USLC-3, s/n 30534, s/n 21013, s/n 20925, Komatsu dsl, 9'6" dipper sticks, JRB hydraulic quick couplers, (2) with hydraulic beyond, digging buckets, zero tail swing, enclosed cabs with ac, 14'7" crawlers, and 31.5" TBG pads. All in good condition with good undercarriages.



'04 KOMATSU PC228USLC-3



'02 KOMATSU PC228USLC-3

(4) 2003-2000 KOMATSU PC228USLC-2, s/n 15558, s/n 15867, s/n 15809, s/n 15471, Komatsu dsl, 9'6" dipper sticks, JRB hydraulic quick couplers, (1) with hydraulic beyond, digging bucket, zero tail swing, enclosed cabs with ac, 14'7" crawlers, and 27.5" TBG pads. In good condition with good and fair to good undercarriages.



'00 KOMATSU PC228USLC-2



(3) OF (5) KOMATSU PC128US-2



'01 KOMATSU PC128US-2



'00 KOMATSU PC128US-2

2004 KOMATSU PC78US-6N0, s/n 6646, dsl, 6'3" dipper stick, JRB hydraulic quick coupler, hydraulic beyond, 20" digging bucket, backfill blade, enclosed cab with ac, 9'4" crawlers, and 18" street pads. In good condition with good undercarriage.



'04 KOMATSU PC78US-6N0



(1) OF (2) '99 KOMATSU PC35R-8

(2) 1999 KOMATSU PC35R-8 Minis, s/n 37653, s/n 37524, dsl, 4'5" dipper sticks, hydraulic beyond, digging buckets, backfill blades, enclosed cabs, 7' crawlers and 12" street pads. In fair and fair to good condition with fair to good and fair undercarriages.



'02 KOMATSU PC228USLC-3



(2) OF (7) KOMATSU PC228USLC

COMPACTION EQUIPMENT



'96 IR SD-1000

(4) 1998-1994 INGERSOLL-RAND SD-1000, s/n 152840, s/n 145513, s/n 10651, s/n 140365, Cummins dsl, 84" smooth drums, drum and wheel drive, (2) with 2-spd vibration, ROPS canopies, and 23.1-26 tires. In good condition with good and fair tires.



'94 IR SD-1000

1989 INGERSOLL-RAND DD-35 Vibratory Roller, s/n 8339S, Deutz dsl, 39" smooth drums and drum cleaners. In fair condition.

(4) WACKER Walk Behind Rollers, Honda gas, hydrostatic trans, 28" smooth drum, 16.5" stabilizing drum, and transportation bracket. In good condition.

(3) ESSICK Walk Behind Roller, Honda gas, hydrostatic trans, 30" smooth drum, 20" stabilizing drum, and transportation bracket. In good condition.

(4) 1999-1994 RAMMAX & MULTIQUIP RW1403 Trench Compactor, s/n 328107F, s/n 32574F, s/n 321478, s/n 315341, dsl, hydrostatic trans, 33" and 24" split padfoot drums and drum cleaners. In good and fair to good condition.
1987 RAMMAX P33/24 Trench Compactor, s/n 5138, dsl, hydrostatic trans, 24" split padfoot drums. In fair to good condition.



(1) OF (5) TRENCH COMPACTORS

CRAWLER DRILLS



(2) 2002 INGERSOLL-RAND ECM-590 Crawler Drill, s/n G11311HK, s/n G11316JK, Cummins dsl, hydraulic drive, 20' masts, 10'3" crawlers, and 12" SBG and TBG pads. In good condition with good undercarriage.

(1) OF (2) IR ECM-590



(1) OF (5) DITCH WITCH RT55H

(5) CABLE PLOWS AND TRENCHER

(5) 2005-2004 DITCH WITCH RT55H, 4x4, s/n 5Z0435, s/n 5Z0437, s/n 5Z0426, s/n 5Y1216, s/n 5Y1230, Deutz dsl, hydrostatic trans, Ditch Witch H533 vibratory plow attachments, with counterweights, 6-way straight blades, (2) with front auxiliary hydraulics, 4-wheel steer, ROPS post, and 31x15.5-15 tires. In good condition with good tires.

1996 VERMEER LM42 Articulated Trencher/Cable Plow, s/n 1VRM112L3T1000536, Deutz dsl, hydrostatic trans, 5' trencher bar, cable plow, and 26x12.00-12 tires. In good condition with good tires.



'96 VERMEER LM42

(7) TELESCOPIC ROUGH TERRAIN FORKLIFTS



(1) OF (3) JCB 550 10,000#

(3) 1998-1997 JCB 550, 10,000# 4x4, s/n 772924, s/n 770707, s/n 769436, Perkins dsl, powershift trans, 3-section hydraulic booms, 44' lift height, forks, hydraulic fork rotation, 4-wheel steer, (2) hydraulic outriggers, and 17.5-25 tires. In good condition with good to very good, good, and fair tires.

(4) 1999-1997 INGERSOLL-RAND VR-90B, 9,000# 4x4, s/n 155210, s/n 152885, s/n 147321, s/n 148807A, Cummins dsl, powershift trans, 3-section hydraulic booms, 37' lift height, forks, 4-wheel steer, ROPS canopies, and 13.00-24 tires. In good condition with good to very good and good tires.



IR VR-90B 9,000#



IR VR-90B 9,000#

SCISSORS LIFT AND AGGREGATE EQUIPMENT

GROVE SM31/42RT, Rough Terrain Scissors Lift, s/n 16533, Wisconsin gas, hydrostatic trans, 5'6"x13' work platform, 2-wheel drive, (4) hydraulic outriggers, and 31x10.5R15 tires. In good condition with good tires.

2007 EXCEL 36SBF Skid Mounted Cold Feed, s/n 01164, 15HP electric motor and gear reducer, 8'x13' feed hopper with bin vibrators and 36"x18" under hopper conveyor. In good condition.

2007 SMALIS 24"x60' Truss Conveyor, s/n 246024-132, Baldor 10HP electric motor and Dodge gear reducer, 24" truss. In good condition.



'07 EXCEL 36SBF

(14) SINGLE AXLE DUMP TRUCKS



(2) OF (8) FORD F-800 DUMPS



(2) 1998 FORD F-800, Cummins 5.9L, 190HP dsl, 6 spd trans, 10' steel dump bodies with chutes and tarps, 21,000# rear and 9,000# front axles, and 11R22.5 tires. In good condition with good tires.

(5) 1997 FORD F-800, 5.9L dsl, 6 spd trans, 10' steel dump bodies with chutes and tarps, and 11R22.5 tires. In good, fair to good, and fair condition with good and fair to good tires.

1995 FORD F-800, 6 cylinder dsl, 6 spd trans, 10' steel dump body with (2) chutes and tarp, tow package, and 11R22.5 tires. In good condition with good tires.

(3) 2000-1999 FORD F-450XL Super Duty, Triton V-10 gas, auto trans, 9' steel dump bodies with (2) with manual tarps, dual rear wheels, and 225/70R19.5 tires. In good and fair to good condition with good tires.



'99 FORD F-450XL



'99 FORD F-450XL

1999 FORD F-450 Super Duty, Powerstroke V-8 dsl, auto trans, 11' steel dump body with manual tarp, tow package, ac, dual rear wheels, and 225/70R19.5 tires. In good condition with good tires.

1997 FORD F-450XL, 7.3L dsl, 5 spd trans, 10' steel dump body with manual tarp, tow package, ac, dual rear wheels, and LT235/85R16 tires. In fair condition with good tires.

1997 FORD F-Super Duty, 7.3L dsl, 5 spd trans, 10' steel dump body with manual tarp, dual rear wheels, ac, and 235/85R16 tire. In fair condition with good tires.

TRUCK TRACTORS AND FOLDING DECK TRAILER

1994 AUTOCAR/VOLVO/GM ACL64B T/A, Cat 3406, 425HP dsl, Eaton Fuller 13 spd trans, 58,000# rears, 20,000# front axle, wetline, 2-position Jake brake, stationary 5th wheel, Hendrickson spring over walking beam suspension, double frame, and 11.00R24 tires. In good condition with good tires.

1996 FORD L9000 T/A, Cummins N14-350E, 350HP dsl, Eaton Fuller 10 spd trans, 40,000# rears, 12,000# front axle, wetline, air ride suspension, air slide 5th wheel, headache rack, 167" wheelbase, and 11R22.5 tires. In good condition with good tires.

1988 WILSON 4360T T/A Folding Deck Trailer, 8'x8' upper deck, 33" transition from upper deck to lower deck, 25'6" lower deck, 7' rear folding deck, 5' removable ramps from upper deck to lower deck, Braden hydraulic winch, 73,500# GVWR, 16,950# GAWR each, chain dogs, and 10R17.5 tires. In fair condition with good tires.

'94 AUTOCAR ACL64B



ATTENUATOR AND CONE DISTRIBUTION TRUCKS



(1) OF (2) '93 GMC TOPKICK WITH SCORPION

controls, 12'4" stake body, behind cab (2) 32" man baskets, ac, and 11R22.5 tires. In good condition with good tires.

1992 FORD F-700 S/A Attenuator/Dump Truck, V-8 gas, 5 spd trans, 2001 Energy Absorption 350DX attenuator, s/n DS2172, Wanco solar powered arrow board, 10' steel dump body, 19,000# rear and 9,000# front axles, and 10.00R20 tires. In fair to good condition with good tires.

1989 FORD F-800 S/A Attenuator/Dump Truck, V-8 gas, auto trans, Energy Absorption 350DX attenuator, Wanco solar arrow board, 9' steel dump body with single chute and manual tarp, and 11R22.5 tires. In fair to good condition with good tires.

1993 GMC Topkick S/A Stake Body/Cone Distribution Truck, GM 6.0L, V-8 gas, auto trans, 20' steel flatbed body, 42" stake sides, rear personnel platform, stands, barrel racks, rear camera, Audiomaster intercom system, rear light package, ac, and 11R22.5 tires. In good condition with good tires.

1996 GMC Topkick S/A Stake Body/Cone Distribution Truck, V-8 gas, auto trans, 20' flatbed body with 40" stake sides, rear personnel platform, 19,000# rear and 8,100# front axles, ac, and 11R22.5 tires. In good condition with good tires.

1997 FORD F-Super Duty S/A Stake Body/Cone Distribution Truck, V-8 gas, auto trans, 12'6" stake body, rear personnel platform, dual rear wheels, and 235/85R16 tires. In fair to good condition with good tires.

(2) 1993 GMC Topkick S/A, 8.0L, V-8 gas, Allison auto trans, Scorpion attenuators, 65MPH rated with in cab controls, Wanco solar powered arrow boards with in cab controls, 12'4" steel stake body, (2) man baskets, ac, and 11R22.5 tires. In good condition with good tires.

(2) 1995 GMC Topkick S/A, 6.0L, V-8 gas, Allison auto trans, 2005 Energy Absorption Safe Stop attenuators, s/n 318081905, s/n 321081905, 62MPH rated with in cab controls, Wanco solar powered arrow boards with in cab controls, 12'4" stake body, behind cab (2) 32" man baskets, ac, and 11R22.5 tires.

FLATBED/DUMP, FLATBED, STAKE, AND VAN BODY TRUCKS



(1) OF (2) GMC C6500

1995 FORD F-800 S/A Flatbed/Dump, Ford dsl, 6 spd trans, 16' steel flatbed body, 17,500# rear and 7,000# front axles, and 10R22.5 tires. In good condition with good tires.

1990 FORD F-700 S/A Flatbed/Dump Truck, Ford dsl, 5 spd trans with 2 spd rear, 16' steel flatbed body and 11R22.5 tires. In fair to good condition with good tires.

1989 FORD F-700 S/A Flatbed/Dump, Ford dsl, 5 spd trans with 2 spd rear, 14' steel flatbed body, tow package, and 9.00-20 tires. In good condition with good tires.

(2) 1999 FORD F-450XL Super Duty S/A Stake Body, Triton V-10 gas, auto trans, 13'6" steel flatbed bodies, 42" stake sides, lift gate, (2) underbody toolboxes, dual rear wheels, and 225/70R19.5 tires. In good and fair to good condition with good and fair tires.

1996 GMC Topkick S/A Van Body, 6.0L, V-8 gas, Allison auto trans, Morgan 16' van body, aluminum ramp, tow package, ac, and 11R22.5 tires. In good condition with good tires.

(2) 1997 GMC C6500 S/A Flatbeds, V-8 gas, Allison auto trans, 25' & 24' steel flatbeds, ratchet straps, lift gate, 19,000# rear and 8,100# front axles, ac, and 11R22.5 tires. In good and fair to good condition with good tires.

1995 GMC Topkick S/A Flatbed, V-8 gas, Allison auto trans, 20' steel flatbed, 19,000# rear and 6,950# front axles, ac, and 11R22.5 tires. In fair to good condition with good tires.

FLATBED/WATER AND SERVICE TRUCKS, AND CAB & CHASSIS



'03 FORD F-550XL

2003 FORD F-550XL Super Duty S/A Service Truck, Powerstroke dsl, auto trans, Reading 11' service body, 50 gallon fuel tank, 12 volt pump, hose reel, tow package, ac, dual rear wheels, and 225/70R19.5 tires. In fair to good condition with fair to good tires.

1993 GMC Topkick S/A Cab and Chassis, V-8 gas, auto trans, air brakes, 204" wheelbase, and ac. In fair condition with good tires.

1986 GMC BRIGADIER T/A Flatbed/Water Truck, Cat 3208 dsl, auto trans, 3,000 gallon poly tank, hydraulic driven pump, front, middle and rear air actuated spray heads, 19' steel flatbed, 44,000# rears, 13,100# front axle, tow package, and 11.00R20 tires. In fair to good condition with fair to good tires.

KNUCKLEBOOM AND MIXER TRUCKS

1989 GM/WHITE/AUTOCAR ACL64B T/A Knuckleboom, Cat 3406 dsl, Eaton Fuller 8LL, 10 spd trans, IMC 18000, 20,000# knuckleboom, s/n 18026886009, 9'-25'10" 4-section hydraulic boom, 35'1" lift height, (2) hydraulic outriggers, 20' steel flatbed, underbody toolboxes, 2-stage engine brake, Hendrickson suspension, ac, 12.00R24 front and 11.00R24 rear tires. In good condition with good tires.



'89 AUTOCAR WITH IMC 20,000#



(1) OF (4) '97 OSHKOSH 11 CU YD

(4) 1997 OSHKOSH S-2146 Tri-Axle Front Discharge, Cat 3306 dsl, auto trans, Oshkosh 11 cubic yard front discharge mixers, s/n L5A-4151, s/n 1586, s/n N1754, s/n unknown, 200 gallon water tank, 46,000# rears, 21,000# front front and 20,000# airlift 3rd axle, aluminum wheels, and 445/65R225 tires. In fair to good condition with fair to very good tires.

PORTABLE AIR COMPRESSORS, PORTABLE GENERATORS, AND PUMPS

1998 INGERSOLL-RAND P375WJD, 375CFM Portable Air Compressor, s/n 285508UA1414, JD dsl, 100PSI and 225/75R15 tires. In good condition with good tires.

(13) 2000-1998 INGERSOLL-RAND P185WJD, 185CFM Portable Air Compressors, JD dsl, front mounted hose reels and 205/75R15 tires. In good condition with good tires.



'98 IR 375CFM



(1) OF (13) IR 185CFM

(1) OF (13) IR 185CFM

2006 INGERSOLL-RAND G80, 80KW Portable Generators, JD 4045 dsl, 83KVA prime, 66KW prime, 480 volt, 3-phase, and 205/75D15 tires. In good condition with good tires.

2002 INGERSOLL-RAND G50 Portable Generator, s/n 005002006381, JD 4045 dsl, 40KW primary/44KW standby, 50KVA primary/55KVA standby, 60 amp prime/66 amp standby, 480 volt, 60hz, 3-phase, mounted on tandem axle trailer, 205/75R15 tires. In good condition with good tires.

1998 GODWIN CD150M-B/S, 6" Portable Pump, s/n 9814026-19, JD dsl, 205/75R15 tires. In good condition with good tires.

1996 SCHWING P-88 Portable Concrete Pump, s/n 171088562, Wisconsin gas, 961PSI and 225/75R15 tires. In good condition with good tires.



'06 IR G80



'98 GODWIN 6 INCH

'96 SCHWING P-88