

# ABSOLUTE AUCTION

## COMPLETE LIQUIDATION

### BFB Excavating, Inc.



**BFB**  
Excavating Inc

**THURSDAY, NOVEMBER 15, 2012 - 9:00AM**  
**Blakeslee, Pennsylvania (Pocono Mountains)**



'07 CASE CX160B AND '04 CX130



CASE 850D AND 450C



'05 FORD F-350 4X4

**Hunyady**  
Auction Company

1440 COWPATH RD. • HATFIELD, PA 19440  
215/361-9099 • Fax: 215/361-9212  
[www.hunyady.com](http://www.hunyady.com)

PRE-SORTED  
FIRST CLASS MAIL  
US POSTAGE  
**PAID**  
HAVERTOWN, PA  
PERMIT #45



# ABSOLUTE AUCTION

## DUMP TRUCKS



**2006 MACK Model CV713 Granite Tri-Axle Dump Truck**, powered by Mack E7, 427HP diesel engine and Maxitorque 10 speed transmission, equipped with Bibeau BFL-HD 17'6" heated steel dump with air gate, power tarp, 46,000# rears, 18,000# front, 20,000# lift axles, 2-stage Jake brake, camelback suspension, heated mirrors, aluminum wheels, and 11R24.5 tires. In good condition with very good tires. **(131,644 Miles)**



**'04 MACK CV713 GRANITE**

**2004 MACK Model CV713 Granite Tandem Axle Dump Truck**, powered by Mack E-7 400 diesel engine and Maxitorque 10 speed transmission, equipped with Bibeau BFL-HD 14'6" heated dump body with single chute, air gate, power tarp, 44,000# rears, 16,540# front axle, camelback suspension, 2-stage engine brake, tow package with air, aluminum front wheels, cruise control, A/C, and 12R22.5 front and 11R24.5 rear tires. In good condition with good to very good tires. **(71,307 Miles)**

**2000 MACK Model RD688S Tri-Axle Dump Truck**, powered by Mack E7, 427HP diesel engine and Eaton Fuller 8LL 10 speed transmission, equipped with BeauRoc 17'6" heated dump body with air gate, single chute and power tarp, 46,000# rears, 18,000# front, 20,000# lift axles, air operated central hydraulics, 2-stage Jake brake, camelback suspension, tow package with air, heated mirrors, A/C, aluminum front and lift wheels, and 425/65R22.5 front, 11R24.5 rear and 385/65R22.5 lift tires. In good condition with good tires.

**'00 MACK RD688S**



## HYDRAULIC EXCAVATORS



**2007 CASE Model CX160B Hydraulic Excavator**, s/n 5N7SAF1251, powered by Case diesel engine and hydraulic drive, equipped with 10' stick with Rockland 24" hydraulic thumb, Esco 36" digging bucket, 23.5" TBG pads, 13" crawlers, and enclosed cab with A/C. In good condition with good undercarriage. **(4,347 Hours)**

**'04 CASE CX130**



**'07 CASE CX160B**

**1994 JOHN DEERE Model 690E LC Hydraulic Excavator**, s/n 548501 (stamp), powered by John Deere diesel engine and hydraulic drive, equipped with 9'6" stick, 40" digging bucket with Geith 24" mechanical thumb, 31.5" TBG pads, and 14" crawlers. In fair to good condition with excellent undercarriage. **(Zero Hours on New U/C Group)**

**'94 JOHN DEERE 690E LC**



**2004 CASE Model CX130 Hydraulic Excavator**, s/n DAC131496, powered by Case diesel engine and hydraulic drive, equipped with 10' stick with Geith 15" mechanical thumb, Geith 36" digging bucket, 23.5" TBG pads, 11'4" crawlers, and enclosed cab with A/C. In good condition with good tires. **(4,563 Hours) (Less Than 300 Hours on New U/C Group)**

## CRAWLER TRACTORS AND RUBBER TIRED LOADER



**'86 CASE 850D**

**1989 CASE Model 450C Long Track Crawler Tractor**, s/n JAK0012930, powered by Case diesel engine and Hi-Lo reversing transmission, equipped with 6-way hydraulic straight blade, 16" SBG pads, and ROPS canopy with sweeps. In fair to good condition with good undercarriage.

**'89 CASE 450C LONG TRACK**



**JOHN DEERE 544B**

**JOHN DEERE Model 544B Rubber Tired Loader**, s/n 310618T, powered by John Deere diesel engine and powershift transmission, equipped with general purpose loader bucket, enclosed ROPS cab, and 17.5-25 tires. In fair to good condition with fair to good tires. **(New Bucket Linkage & Pins, Line Bored)**

## PORTABLE SCREEN



**EXTEC Portable Screen**, s/n 6862, powered by John Deere diesel engine, equipped with 7'x11' single deck with 3" screen material plus additional 1/2" topsoil screen, Grizzly scalping deck, hydraulic wheel lift, and air brakes. In fair to good condition. **(3,091 Hours)**

## MASON DUMP AND PICKUP



**'05 FORD F-350XL SUPER DUTY 4X4**

**2005 FORD Model F350XL Super Duty 4x4 Mason Dump Truck**, powered by Powerstroke 6.0L diesel engine and automatic transmission, equipped with Heil 9' steel mason dump body, Western 9'6" V-plow, central hydraulic system, dual rear wheels, A/C, and 245/75R17 tires. In good condition with excellent tires. **(043,854 Miles)**

**1984 DODGE Model 350, 4x4 Pickup Truck**, powered by V-8 gas engine (318 CI) and automatic transmission, equipped with Meyers 8' power angle plow, and 8' bed with crossbox and liner. In fair to good condition with fair to good tires.

## TRUCK TRACTOR, LOWBOY, AND TILT DECK



**'99 FREIGHTLINER FL112 AND '89 WINSTON 35 TON**

**1999 FREIGHTLINER Model FL112 Tandem Axle Truck Tractor**, powered by Cat C-12, 430HP diesel engine and Rockwell 10 speed transmission, equipped with 40,000# rears, 12,000# front axle, 2-stage Jake brake, air ride suspension, 14' wheelbase, single frame, air slide 5th wheel, aluminum front wheels, cruise control, heated mirrors, A/C, 52,000# GVWR, and 315/80R22.5 front and 11R24.5 rear tires. In good condition with good tires.

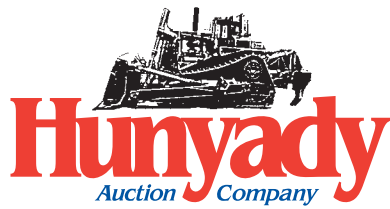
**1989 WINSTON 35 Ton Rigid Neck Low Boy Trailer**, equipped with 16'4"x8' well, 9' deck over wheels, 7' top deck, 48' overall length, beavertail with electric power ramps, spring suspension, and 215/75R17.5 tires. In fair to good condition with good tires.

**2008 SUPERLINE 22 Ton Tilt Deck Tag-A-Long Trailer**, equipped with 24'x8'6" tilt deck, ratchet strap ties, D-ring chain dogs, air brakes, 53,300# GVWR, and 235/75R17.5 tires. In good condition with very good tires.



**'08 SUPERLINE 22 TON TILT DECK**

# ABSOLUTE AUCTION



Bid Live Online! proxibid®  
www.proxibid.com/hunyady

Please visit our website at  
[www.hunyady.com](http://www.hunyady.com)

**Notice:** Following (27) successful years in the excavating business, Mr. Fran Bankes (president) has decided to retire and liquidate all assets at absolute auction. All items are owned by BFB Excavating and will positively sell to the highest bidder without minimums, reserves, or buyer's premiums!

**Location:** The auction will be held at BFB Excavating's shop and yard facility, 4236 Route 115, Blakeslee, Pennsylvania 18610

**GPS Navigation:** The above physical address may not be recognized by GPS, however if you enter "Pocono Race Track, Long Pond, Pennsylvania", the auction site is located (2.0) miles South of the race track entrance along Route 115. Look for green building on left traveling South

**Sale Site Directions: FROM INTERSTATE 80:** Exit #284 (Route 115/Blakeslee) Proceed to Route 115 South and follow past Pocono Race Track entrance. Continue another (2.0) miles to sale site on left.

**Online Bidding:** Live internet bidding will be provided by Proxibid. Proxibid will require a 2.5% internet provider service fee (capped at \$750) that will be charged for each item purchased online. All interested internet bidders are required to register with Proxibid 24 hours prior to the auction at [www.proxibid.com/hunyady](http://www.proxibid.com/hunyady) or call 877-505-7770

**Terms:** Payment in full is required on sale day by cash, certified funds, or check with a bank letter of guarantee. Sample letter of guarantee: "We hereby guarantee the payment of our customer \_\_\_\_\_ written on his account up to \_\_\_\_\_ dollars for purchases at your auction sale on November 7, 2012." All guaranteed checks should be made payable to Hunyady Auction Co.

**Sales Tax:** Since this contractor is selling items not normally sold in the course of his business, the Commonwealth of Pennsylvania considers this an isolated sale and does not require the auction company to collect sales tax.

**Financing: Financing is available, please contact Susan (215) 361-9099 at the auction company for details.**

**Inspection:** Items will be available for inspection beginning one week prior to the auction from 8:00AM to 5:00PM. The site will be closed Saturday and Sunday, November 10th and 11th.

**Removal:** After complete payment, all sale items may be removed on sale day as long as the removal activity is not disruptive to the sale and only until 5:00PM. Items may also be removed Friday and Monday November 16th and 19th. All items must be removed no later than Monday, November 19th at 5:00PM.

**Airport Information:** Private aviation is best serviced via Pocono Mountains Municipal Airport (KMPO) 570-839-0258. Airport is approximately (10) miles from sale site.

**Motel Information:** Best Western Inn At Blakeslee-Pocono, 107 Parkside Ave., Blakeslee, PA 18610 (570) 646-6000 • Blakeslee Inn, Pennsylvania 940, Blakeslee, PA 18610 (570) 646-1100

**Sale Site Phone (Beginning Monday, Nov. 5th): (570) 646-5923 • Sale Site Fax: (888) 859-8958**

## VAN STORAGE AND TAG-A-LONG TRAILERS

**STRICK Tandem Axle Van Storage Trailer**, equipped with (2) curbside doors, and 21'x8' van body storage with roll-up rear door. (No Title)

**16'x6'10" Tandem Axle Tag-A-Long Trailer**, equipped with 225/75R15 tires. (No Title)

## CONTRACTORS TOOLS

2003 **WACKER** VP1340AW 16" Plate Compactor, Honda gas engine • 2003 **WACKER** BS350-4 Foot Compactor, powered by 4-stroke gas engine • **WACKER** BS60Y Foot Compactor • NW Rotating Laser Level with tripod and grade pole • 9 Volt Rotary Laser Level • **STIHL** TS350 Gas Demo Saw • (2) 20" Chain Saws • **HOMELITE** Chainsaw • (2) 1500 Watt Generators (Honda and B&S Gas) • 2" Centrifugal Pump • **MAKITA** HR3815 Hammer Drill with core bits • 300 Gallon Poly Oil Tank, equipped with 50' hose and reel, pneumatic pump, and steel cage frame • Fuel Cell with 12 Volt pump

## SHOP EQUIPMENT

**CLARK** 1000 PSI Steam Cleaner • **HOBART** TRU-250 AC/DC Arc Welder • **HONDA** 170 Amp DC Welder/Generator, 120 VAC with leads • Oxy/Acetylene Torch Outfit • Hi-Quality 30 Ton Shop Press • **NORTHERN** 16 Speed 5/8" Drill Press • (2) Pneumatic Lubers, (1) with metered gun • **ZEP** Parts Washer • **STEMCO** Seal Driver • (4) 20 Ton Air Operated Bottle Jacks • (5) 6-20 Ton Bottle Jacks • (2) **PITTSBURGH** 3 Ton Floor Jacks • **RYOBI** 14" Abrasive Chop Saw • Pedestal Grinder • Steel Cabinet with air tools, torches, and welding rod • Combination Wrenches and Sockets • Porta Power Set • (2) Tap and Die Sets • Electric Chain Hoist • Kerosene Heater & Propane Radiant Heater • (2) 330 Gallon Oil Tanks • **CENTURY** 6/12/24 Volt Battery Charger • Steel Bench with vise • Bolt Bin and Hardware

