

# ABSOLUTE AUCTION

## COMPLETE LIQUIDATION

**THURSDAY,  
MARCH 17, 2011 9:00AM**

**Easton,  
Pennsylvania  
(Allentown Area)**



'05 IR-BLAW KNOX PF2181



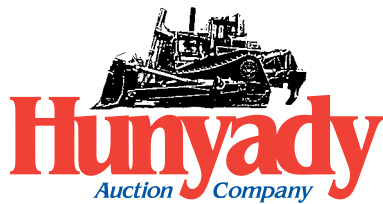
(2) OF (4) TRI-AXLE DUMPS



'05 JD 650J XLT AND '96 JD 450G LT



'05 AND '01 CASE 4X4 EXTEND-A-HOES



1440 COWPATH RD. • HATFIELD, PA 19440  
215/361-9099 • Fax: 215/361-9212

PRE-SORTED  
FIRST CLASS MAIL  
US POSTAGE  
**PAID**  
HAVERTOWN, PA  
PERMIT #45



# NEVER A BUYER'S PREMIUM!



**Notice:** Following a successful career of over (35) years in the road paving, site excavation and development, and snow maintenance industries, the owners of PAN Companies, Inc., Mr. Peter A. Nicholson, has decided it is time to retire and completely liquidate all assets in order to pursue other personal interests. All items are owned by PAN Companies and will sell at ABSOLUTE AUCTION, without minimums, reserves, or buyers premiums!

**Auctioneer's Note:** The majority of the equipment has been purchased new by PAN Companies and has been very well maintained. Please plan on attending this single-seller, absolute auction!

**Location:** The auction will be held at PAN's shop and office facility located at 1600 Uhler Road, Easton, PA 18040

**Terms:** Payment in full is required on sale day by cash, certified funds, or check with a bank letter of guarantee. Sample letter of guarantee: "We hereby guarantee the payment of our customer \_\_\_\_\_ written on his account up to \_\_\_\_\_ dollars for purchases at your auction sale on March 17, 2011." All guaranteed checks should be made payable to Hunyady Auction Co.

**Sales Tax:** Since this contractor is selling items not normally sold in the course of his business, the Commonwealth of Pennsylvania considers this an isolated sale and does not require the auction company to collect sales tax.

**Financing:** Financing is available on select items, please contact Susan (215) 361-9099 at the auction company for details.

**Inspection:** Items will be available for inspection beginning one week prior to the auction from 8:00AM to 4:00PM. The site will be closed Saturday and Sunday, March 12th and 13th.

**Removal:** After complete payment, all sale items may be removed on sale day as long as the removal activity is not disruptive to the sale and only until 5:00 p.m. Items may also be removed Friday, March 18th and Monday thru Thursday, March 21st to March 24th, from 8:00 a.m. to 5:00 p.m. All items must be removed no later than Thursday, March 24th at 5:00 p.m.

**Sale Site Directions:** **FROM ROUTE 33 BETWEEN ALLENTOWN AND STROUDSBURG, PA:** Follow Route 33 to the Stockertown/Bangor Exit (mile post 9.5) Proceed to Route 191 North to first traffic light and turn right onto Main Street. Continue on Main Street (1.5) miles (Main Street becomes Sullivan Trail) to traffic light and turn right onto Uhler Road. Follow (0.3) miles to sale site on right.

**Airport Information:** The closest airfield for private aviation is Braden Airpark (N43) (610) 258-0473 and is less than (1) mile from the auction site, however runway length is 1,956'. The area is also serviced commercially and privately through Lehigh Valley International Airport

**Motel Information:** Hampton Inn Easton 3723 Easton Nazareth Highway, Easton, PA (610) 250-6500 • Towne Place Suites 3800-Easton/Nazareth Highway, Easton, PA (610) 829-2000 • Comfort Inn 2415 Nazareth Road, Rt. 22 Ex. 25th Street, Easton, PA (610) 253-0546 • Holiday Inn Express Hotel & Suites 90 Kunkle Dr, Easton, PA (610) 923-9495

## Sale Site Phone (Beginning Monday, March 7th): (610) 253-7515

## Sale Site Fax: (888) 859-8958

### SHOP EQUIPMENT



2008 MI-T-M Model HHS-2004 Electric Pressure Washer, 2000 PSI @ 4 gpm, hose reel, heat • **TITAN** 2200 PSI Gas Powered Cold Pressure Washer • **MILLER** ShopMaster 300 AC/DC 300 Amp Arc Welding Power Source, with Miller S-22A wire feed unit • **MILLER** Roughneck 2E, 200 Amp Gas Powered Arc Welder Welder • **MILLER** 45 Amp Stick Welder • **ESAB** Model PCM-500I Plasma Cutter •

#### MI-T-M PRESSURE WASHER

**SANBORN** Vertical Shop Air Compressor, 230 volt, 5HP • **REDDY HEATER** 165,000 BTU Kerosene Heater • **REDDY** 90,000 BTU Heater • **OX** Model AK400, 4 Ton Porta-Power Set • **RIGID** Pipe Cutter • 3/4" Drive Socket Set • 10-20 Ton Truck Floor Jack • Transmission Jack • Shop Crane • Sandblast Pot with whipline • (3) Shop Vacs • (2) 6/12 Volt Battery Chargers • (6) Bottle Jacks • Pneumatic Luber • (6) Jack Stands • (2) Oxygen/Acetylene Torch Kits • (3) Fiberglass Step Ladders • (2) Floor Jacks • **MILWAUKEE** Chop Saw • **EAGLE** 1/2" Drill Press • 6" Pedestal Grinder • Steel Shop Table with vise • Parts Washer • 20 Ton Shop Press

### MISCELLANEOUS TOOLS AND MATERIAL

(2) **DEWALT** 18V Tool Kits consisting of sawzall, circular saw, 1/2" drill, work light and battery charger • 2006 **INGERSOLL-RAND** Model MX60B Pneumatic Paving Breaker • **INGERSOLL-RAND** Model MX60 Pneumatic Paving Breaker • **THOR** Pneumatic Rock Drill • **INGERSOLL-RAND** Model PB35A Pneumatic Chipping Hammer • **HILTI** Model TE24 Rotary Hammer • **PASLODE** Finisher Nailer • Powder Fastener • **DEWALT** Jig Saw • **MILWAUKEE** Sawzall • (2) **PASLODE** Impulse Cordless Framing Nailers • (2) Shop Light Stands • Belt Sander • Palm Sander • Router • 325 Gallon Poly Tank • **RIGID** Soil Pipe Cutter • (2) 8'x10'x3/4" Road Plate • Precast Concrete • Road Signs and Barricades • **PVC** and **FERNCO** Fittings



## DUMP TRUCKS



'06 PETERBILT 357 (UNIT #827)

**2006 PETERBILT Model 357 Tri-Axle Dump Truck**, powered by Cat C-13 Acert 430HP diesel engine and Eaton Fuller 8LL, 10 speed transmission, equipped with Heil 18' steel dump body with bed vibrator, 2-way air gate, single chute, Aero power tarp, 46,000# rears, 20,000# front axle, 22,000# lift axle, air ride suspension, aluminum Budd wheels, 2-stage engine brake, cruise control, power windows and locks, heated power mirrors, tow package with air, 425/65R22.5 front and lift, and 11R24.5 rear tires. In good to very good condition with good tires. (Odometer Reads 90,170 Miles) (Unit #827) **(Purchased New)**



'97 FORD LOUISVILLE 9500 (UNIT #817)

**1997 FORD Model Louisville 9500 Tri-Axle Dump Truck**, powered by Cat 3406, 450HP diesel engine and Roadranger RTO 8LL, 10 speed transmission, equipped with Hwey model SD-176, 17'6" heated aluminum dump body with Aero power tarp, air gate, 46,000# rears, 18,000# front axle, spring/beam suspension, aluminum Budd wheels, 2-stage engine brake, air conditioning, cruise control, heated mirrors, 208" wheelbase, 64,000# GVWR, 315/80R22.5 front and lift, and 11R24.5 rear tires. In good condition with good tires. (Unit #817) **(Purchased New)**



'94 FORD LTL9000 (UNIT #806)

**1994 FORD Model LTL9000 Tri-Axle Dump Truck**, powered by Cat 3406B, 14.6L diesel engine and Eaton Fuller RT1170-8LL, 10 speed transmission, equipped with J&J 17'6" heated aluminum dump body (heat not plumbed) with Aero power tarp, air gate, single chute, 46,000# rears, 18,000# front axle, airlift 3rd axle with dual wheels, spring suspension, engine brake, 73,280# GVWR, 385/65R22.5 front and 11R24.5 rear and lift tires. In good condition with good tires. **(Less Than 100,000 Miles on Rebuilt Transmission)** (Unit #806) **(Purchased New)**



'88 FORD LTL9000 (UNIT #801)

**1988 FORD Model LTL9000 Tri-Axle Dump Truck**, powered by Cat 3406B diesel engine and Roadranger RTO1170-8LL, 10 speed transmission, equipped with 16' steel dump body with electric tarp, single chute, 44,000# rears, 16,000# front axle, 2-stage engine brake, tow package with air and electric, air conditioning, heated mirrors, 315/80R22.5 front and 11R22.5 rear and lift tires. In good condition with good tires. (Unit #801) **(Purchased New)**



'95 FORD LT9000 (UNIT #815)

**1995 FORD Model LT9000 Tandem Axle Dump Truck**, powered by Cat 3406B, 350HP diesel engine and Eaton Fuller 8LL, 10 speed transmission, equipped with Galion 14' steel dump body with manual tarp, single chute, 46,000# rears, 18,000# front axle, tow package with air, and 11R22.5 tires. In good condition with fair to good tires. (Unit #815) **(Purchased New)**

**1975 FORD Model LNT8000 Tandem Axle Dump Truck**, powered by Cat 3208 diesel engine and Fuller Roadranger 13 speed transmission, equipped with 13' steel dump body with single chute, Fisher 10' snow plow package, spring suspension, tow package with air, 44,800# GVWR, and 11R22.5 tires. In fair condition with fair tires. (Off-Road Use Only) (Unit #807)

## TRUCK TRACTOR, LOWBOY, AND DUMP TRAILER



'97 PETERBILT 385 WITH '99 ROGERS 35 TON

**1997 PETERBILT Model 385 Tandem Axle Truck Tractor**, powered by Cat C-12, 395HP diesel engine and Eaton Fuller 10 speed transmission, equipped with 38,000# rears, 12,000# front axle, wetline system, 3-stage Jake brake, air slide 5th wheel, single frame, air ride suspension, air rid cab, aluminum Budd wheels, 120 gallon aluminum fuel tank, aluminum fenders, cruise control, air conditioning, heated mirrors, and 11R22.5 tires. In good condition with good tires. (Unit #804)

**1999 Rogers Model CR35PL86/50/22/102/2XAR, 35 Ton Tandem Axle Lowboy Trailer**,

equipped with non-ground bearing hydraulic detachable gooseneck, 22'x8'6" load deck with 7" enclosed deck over wheels, air ride suspension, 84,460# GVWR, and 255/70R22.5 tires. In good condition with good tires. (Unit #808T) **(Purchased New)**



**1986 COBRA 30' Tandem Axle Aluminum Dump Trailer**, equipped with air tailgate and single chute, spring suspension, 18,000# GAWR, 73,280# GVWR, and 11R24.5 tires. In good condition with good tires. (Unit #804T)



'86 COBRA 30' ALUMINUM

## HYDRAULIC EXCAVATORS AND ATTACHMENTS



**2002 CASE Model CX210 Hydraulic Excavator**, s/n DAC0721381, powered by Isuzu diesel engine and hydraulic drive, equipped with 10' dipper stick with hydraulic beyond, Case/JRB hydraulic quick coupler, adjustable stiff arm bracket, CF 42" digging bucket, air conditioning, 14'6" crawlers, and 24" TGB pads. In good condition with good undercarriage. **(Meter Reads 5,538 Hours) (Purchased New)**

**02 CASE CX210**

**2004 CASE Model CX160 Hydraulic**

**Excavator**, s/n DAC161722, 8'7" dipper stick with hydraulic beyond, Geith hydraulic quick coupler, 36" digging bucket, and air conditioning. In good condition with good undercarriage. **(Meter Reads 4,759 Hours) (Rental Purchase)**



**04 CASE CX160**



**05 ROCK BLASTER RB1000G**

**2005 ROCK BLASTER Model RB1000G Hydraulic Demolition Hammer**, s/n 241AD, 4,500# impact energy class. In very good condition. (Fits 210/160) **(Purchased New)**  
**2002 ROCK BLASTER Model PM750 Hydraulic Demolition Hammer**, s/n 272007, 3,200# impact energy class. In good condition. (Fits 160)  
**Excavator Attachments:** INDECO Model IHC-130, 30"x24" Vibratory Plate Compactor (Fits 160) • GEITH 60" Clean Up Bucket, with Helac Powertilt hydraulic wrist-o-twist (Fits 210) • CF 36" Digging Bucket (no pins) • JD 30" Digging Bucket • GEITH 26" Mechanical Thumb Attachment

## TOOL CARRIER AND RUBBER TIRED LOADER



**97 JD 544G TC**

**(Meter Reads 5,833 Hours) (Rebuilt Engine At JD Dealer @ 5,082 Hours)**  
**JRB 66" Fork Attachment (JD 544G) \_ (1 Set) Bolt-On Bucket Forks**  
**OWATONNA Rubber Tired Loader**, s/n 18352, powered by Perkins diesel engine and shuttle transmission, equipped with general purpose loader bucket, enclosed soft cab with heat, and 16.9x24 tires. In fair condition with good to very good tires. **(Less Than 1,500 Hours On Rebuilt Engine)**

**1997 JOHN DEERE Model 544G TC Tool Carrier**, s/n 549169, powered by John Deere diesel engine and powershift transmission, equipped with hydraulic quick coupler, front auxiliary hydraulics, JRB 2.5 cy general purpose loader bucket, enclosed ROPS cab with air conditioning, and 17.5x25L2 foam filled tires. In good condition with good tires.

## CRAWLER TRACTORS AND CRAWLER LOADER



**05 JOHN DEERE 650J XLT**

**2005 JOHN DEERE Model 650J XLT Crawler Tractor**, s/n T0650JX113034, powered by John Deere diesel engine and powershift transmission with joystick button control, equipped with 6-way hydraulic straight blade, enclosed ROPS cab with heat, air conditioning, and 18" SBG pads. In good to very good condition with good undercarriage. **(Meter Reads 2,391 Hours) (Rental Purchase)**

**1996 JOHN DEERE Model 450G LT Series IV Crawler Tractor**, s/n T0450GH819067, powered by John Deere diesel engine and powershift transmission, equipped with 6-way hydraulic straight blade, ROPS canopy, 116" crawlers, and 16" SBG pads. In good condition with fair to good undercarriage. **(Meter Reads 6,132 Hours) (Rental Purchase)**

**96 JOHN DEERE 450G LT SERIES IV**



**00 CAT 953C**

**2000 CATERPILLAR Model 953C Crawler Loader**, s/n 2ZN03196, powered by Cat 3116 diesel engine and hydrostatic transmission, equipped with general purpose loader bucket with teeth and cutting edges, enclosed ROPS cab with air conditioning. In good condition with fair to good undercarriage. **(Meter Reads 6,803 Hours) (Purchased New)**

## COMPACTOR AND MOTOR GRADER



**87 IR SD-100D**

**1987 INGERSOLL RAND Model SD-100D Vibratory Compactor**, s/n 5399S, powered by Cummins 3.9B diesel engine and hydrostatic transmission, equipped with 84" smooth drum, drum drive, ROPS canopy, and 23.1x26 tires. In good condition with good tires.

**GALION Model 503 Motor Grader**, s/n 503A-HD-05366, powered by 6 cylinder diesel engine and 4-speed direct drive transmission, equipped with 10' moldboard with power side shift and manual blade tilt, front scarifier (no shanks), front wheel tilt, and 8.25x20 tires. In fair condition with fair tires.

## TRACTOR LOADER EXTEND-A-HOES



'05 CASE 580 SUPER M SERIES II, 4X4

**2001 CASE Model 580 Super M 4x4 Tractor Loader Extend-A-Hoe**, s/n JYG0279198, powered by Case diesel engine and shuttle transmission, equipped with general purpose loader bucket, 24" digging bucket, ride control, 4-lever backhoe controls, enclosed ROPS cab with air conditioning, 12x16.5NHS foam filled front and 19.5Lx24 rear tires. In good condition with poor front and good rear tires. **(Meter Reads 06,527 Hours) (Purchased New)**



'01 CASE 580 SUPER M 4X4

**2005 CASE Model 580 Super M Series II, 4x4 Tractor Loader Extend-A-Hoe**, s/n N5C386994, powered by Case diesel engine and shuttle transmission, equipped with general purpose loader bucket with bolt-on cutting edge, 24" digging bucket, ride control, 4-lever backhoe controls, enclosed ROPS cab with air conditioning, 12/16.5NHS foam filled front and 19.5Lx24 rear tires. In good condition with fair to good tires. **(Meter Reads 02,788 Hours) (Purchased New)**

## SKID STEER LOADERS AND ATTACHMENTS



'07 JOHN DEERE CT322

**2003 JOHN DEERE Model 270 Series II Skid Steer Loader**, s/n 919678, powered by John Deere Powertech 4.5 liter diesel engine and hydrostatic transmission, equipped with 76" general purpose loader bucket, Hi-Flow auxiliary hydraulics, standard auxiliary hydraulics, foot controls, side counterweights, ROPS canopy, and 14/17.5 tires. In good condition with fair to good tires. **(Meter Reads 3,421 Hours) (Rental Purchase)**

**Skid Steer Attachments To Include:** JOHN DEERE Model CP24 Worksite Pro 24" Hydraulic Cold Planer, with side shift control • CONEQTEC/UNIVERSAL Model AP300, 12" Cold Planer • SWEEPSTER Model ZBDC62M, 62" Hydraulic Sweeper, with dump hopper



'03 JOHN DEERE 270 SERIES II

**2007 JOHN DEERE Model CT322 Crawler Skid Steer Loader**, s/n 137071, powered by John Deere diesel engine and 2-speed hydrostatic transmission, equipped with 78" general purpose loader bucket, front auxiliary hydraulics, foot controls, enclosed ROPS cab with air conditioning, and 13" rubber tracks. In good to very good condition with good tracks. **(Meter Reads 1,789 Hours) (Rental Purchase)**

## RUBBER TIRED PAVERS



'05 IR-BLAW KNOX PF2181

power crown control, joint matching ski, and 16.00x24TG tires. In good to very good condition with good tires. **(Meter Reads 2,138 Hours) (Purchased New)**

**1994 BLAW-KNOX Model PF-161 Rubber Tired Paver**, s/n 16102-08, powered by John Deere diesel engine and hydrostatic transmission, equipped with Omni IA 8'-13' heated vibratory screed with 12" and 24" bolt-on extensions to 19' paving width, slope and grade controls, wash down system with retractable hose reel, dual operator stations with swing controls, tandem steering bogies, and 14.00x20 tires. In good condition with good tires.

'94 BLAW KNOX PF-161



**2005 INGERSOLL RAND/BLAW-KNOX Model PF2181 Rubber Tired Paver**, s/n 181318, powered by Cummins 5.9 liter diesel engine and hydrostatic transmission, equipped with Ultimat 8'-16' heated vibratory screed with (2) 12" bolt-on extensions to 18' paving width, hydraulic strike-off tunnels, bogie drive assist, Blaw-Kontrol II model AGS7.5 electronic slope and grade controls (un-used),

## VIBRATORY ROLLERS



**2002 CATERPILLAR Model CB214D Tandem Vibratory Roller**, s/n 1TZ00728, powered by Cat 3013 diesel engine and hydrostatic transmission, equipped with 39" smooth drums, water system with front and rear spray. In good condition. **(Meter Reads 3,244 Hours) (Purchased New)**

'02 CAT CB214D

**1996 INGERSOLL RAND Model DD-90 Tandem Vibratory Roller**, s/n 145504, powered by Cummins 3.9 liter turbo diesel engine and hydrostatic transmission, equipped with 66" smooth drums, spray system with front and rear spray, 2-frequency vibration, and ROPS post roll-bar. In good condition. **(Rental Purchase)**

**BOMAG Model BW100AD Tandem Vibratory Roller**, s/n 150124433, powered by Deutz diesel engine and hydrostatic transmission, equipped with 38.5" smooth drums and water system with front and rear spray. In good condition. **(Cosmetically Fair)**



'96 IR DD-90

## CHIPPER, AIR COMPRESSOR, AND WALK BEHIND ROLLER



'93 GRAVELLY PRO-CHIP

good condition with good tires. **(Meter Reads 707 Hours) (Purchased New)**

**1993 INGERSOLL RAND Model DX70 Walk Behind Vibratory Roller**, s/n AD7136, powered by Kubota diesel engine and hydrostatic transmission. In good condition.

**1993 GRAVELLY Model Pro-Chip Portable Brush Chipper**, s/n 1-05-93, powered by Yanmar 36.5HP diesel engine and twin disc PTO, equipped with 9" variable speed feed rollers, hydraulic disc chipper, rotating discharge chute, ball hitch with adjustable length tongue, and F78-14 tires. In good condition with good tires.

**1995 INGERSOLL RAND Model P130WJD Portable Air Compressor**, s/n 153632UVF276, powered by John Deere diesel engine, equipped with P215/75R15 tires. In

## PORTABLE TACK SPRAYER AND TAR POT



'95 LEEBOY L250

propane heat, and ST205/75R15 tires. In good condition. **(Purchased New)**

**1995 LEEBOY Model L250 Portable Tack Sprayer**, s/n 250T-572, powered by Briggs & Stratton 5HP gas engine, equipped with 250 gallon capacity, 8'6" folding spray bar, spray wand with hose reel, propane heat, dual burners, 2" ball hitch, and P225/75R15 tires. In good condition with good tires. **(Purchased New)**

**1991 GARLOCK Model GK-115 Portable Tar Pot**, equipped with 115 gallon asphalt capacity, In good condition. **(Purchased New)**

**MASON DUMP, UTILITY, AND FLATBED TRUCKS**



**'03 CHEVY 3500 4X4**

**2003 CHEVROLET Model Silverado 3500, 4x4 Mason Dump Truck**, powered by Vortec 6.0L gas engine and automatic transmission, equipped with 8'6" mason dump body with manual tarp, dual rear wheels, Western 9' Pro plow package, tow package, and LT215/85R16 tires. In good to very good condition with good tires. **(17,635 Original Miles)**

**2000 FORD Model F-450 XL Super Duty 4x4 Utility Truck**, powered by Powerstroke 7.3 liter diesel engine and 6 speed transmission, equipped with Reading 9' open utility body, Western 9' Pro snowplow package, 100 gallon fuel tank with 12 volt pump, dual rear wheels, tow package with electric, air conditioning, and 225/70R19.5 tires. In good condition with good tires. (Unit #819) **(Purchased New)**



**'00 FORD F-450XL 4X4**



**99 FORD F-350 XL 4X4**

**1999 FORD Model F-350 XL Super Duty 4x4 Utility Truck**, powered by Triton V-10 gas engine and automatic transmission, equipped with Reading 9' open utility body, Western 9' Pro snowplow package, 100 gallon fuel tank with 12 volt pump, tow package with electric, dual rear wheels, air conditioning, and 235/85R16 tires. In good condition with good to very good tires. (Unit #824)

**1997 FORD Model F-350 XL, 4x4 Utility Truck**, powered by Powerstroke 7.3 liter diesel engine and automatic transmission, equipped with Reading 9' open utility body, Western 9' snowplow package, 100 gallon fuel tank with 12 volt pump, air conditioning, and 235/85R16 tires. In good condition with good tires. (Unit #818) **(Purchased New)**



**'97 FORD F-350 XL 4X4**

**1991 FORD Model F-350 Utility Truck**, powered by 5.8 liter V-8 gas engine and automatic transmission, equipped with Stahl 8' open utility body with sliding enclosure, dual fuel tanks, tow package with electric, air conditioning, and P245/75R16 tires. In good condition with good tires. (Unit #812)

**1990 FORD Model F-350, 4x4 Flatbed Truck**, powered by 7.5 liter V-8 gas engine and 5 speed transmission, equipped with 9' flatbed body with stake pockets, Western 9' snowplow package, behind cab thru-tool boxes, dual rear wheels, air conditioning, and LT235/85R16 tires. In fair to good condition with fair to good tires. (Unit #805)



**'90 FORD F-350 4X4**

**PICKUP TRUCKS**



**'05 FORD F-350 XLT 4X4 (SPREADER SOLD SEPARATELY)**

**2005 FORD Model F-350 XLT Super Duty, 4x4 Pickup Truck**, powered by Powerstroke 6.0L diesel engine and automatic transmission, equipped with Western 8'6" MVP V-plow package, 8' bed, tow package with electric, power windows and locks, cruise control, air conditioning, AM/FM CD, and LT275/70R18 tires. In good condition with good tires. **(46,174 Original Miles)**

**1996 FORD Model F-150 XLT Pickup Truck**, powered by 5.8 liter V-8 gas engine and automatic transmission, equipped with 8' bed with bed liner, dual fuel tanks, air conditioning, and 235/75R15 tires. In good condition with good tires.

**TAG-A-LONG TRAILERS, OVERSEA STORAGE CONTAINER, AND SNOWMOBILE TRAILER**



**GENERAL 15 TON**

**1978 GENERAL 15 Ton Tandem Axle Tag-A-Long Trailer**, equipped with 17'x8' load deck, 5' beavertail with ramps, air brakes, chain dogs, and 8.25R15TR tires. In good condition with good tires.

**1985 GENERAL 9 Ton Tri-Axle Tag-A-Long Trailer**, equipped with 16'x6'6" load deck with 4' ramps, electric brakes, chain dogs, and 8x14.5LT tires. In fair to good condition with good tires.

**1999 MIDATLANTIC Tandem Axle Tag-A-Long Trailer**, equipped with 16'x6'8" load deck, 5' ramps, electric brakes, 6,350# GVWR, and LT235/85R16 tires. In good condition with good tires. **(Purchased New)**

**8'x20' Overseas Storage Container**. In good condition.

**8'x30' Single Axle Job Trailer**, equipped with roll-up rear and side man doors.

**1992 LOADRITE Single Axle Tilt Deck Snowmobile Trailer**, equipped with galvanized frame, salt guard, and 1,880 GVWR. In good condition with good tires.

**SNOW MAINTENANCE, SURVEY EQUIPMENT, AND FUEL TANKS**



**(1) OF (3) ALUMINUM SPREADERS**

**Snow Maintenance Equipment: WESTERN 8' Poly Plow** with Ultra-Mount frame, lights, and controls • **(1) BUYERS Stainless Steel Salt Spreader** with gas engine and cab controls • **(2) WESTERN Stainless Steel Salt Spreaders** with gas engines and cab controls

• **WESTERN Rotary Bumper Spreader**. All in good to very good condition.



**SURVEY EQUIPMENT**

**Survey Equipment to include: DIALGRADE**

Model 1160 Pipe Laser and Targets • 2006

**SPECTRA-PHYSICS Model DG711 Pipe Laser &**

Targets • 2006 **SPECTRA-PHYSICS Model LL400 Rotary Laser** • **(2) TOPCON**

Model AT-G7 Auto Level Transits • **CRAFTSMAN Transit** • **TOPCON Model**

Marksman RL50B Rotary Laser

**Fuel Tanks to include:** (2) 500 Gallon Fuel Tanks with Gasboy 120 volt pumps • 1,000 Gallon Fuel Tank with Gasboy 120 volt pump

**GAS POWERED CONTRACTORS TOOLS**



**STONE Model 655PM Portable Mortar Mixer**, Honda 8HP • **CLIPPER Model C357JET Walk-Behind Concrete Saw**, Wisconsin 37HP gas engine and hydrostatic transmission • **TARGET Minicon II Concrete Saw**, Honda 13HP •

**TARGET PAC III Concrete Saw** • **CUB CADET Self-Propelled Snow Blower**, 8HP, 6 speed • **AMF**

Husky Snow Blower • **MIGHTY MAC Leaf Blower**, 8HP • **TITAN Wheelbarrow Type**

Air Compressor, 5.5HP, 8 gallon tank • **SAKAI Model PC600 Gas Powered Plate**

Compactor, Honda 4HP • **(2) WACKER Vibratory Plate Compactors** • **SAKAI Mod-**

el VRS2 Gas Powered Foot Compactor

• **WACKER Model BS600 Gas Powered**

Foot Compactor • 2005 MQ Gas Pow-

ered Foot Compactor • **(2) INGER-**

**SOLL-RAND Model RX65 Gas Powered**

Foot Compactors • **TITAN 8,500 Watt**

Generator, 120/240 volt, electric start •

**WHEELHORSE 5,550 Watt Gas Powered Generator**, Briggs & Stratton gas • **TITAN**

8,000 Watt Generator, 120/240 volt • **TITAN 3"** Portable Trash Pump • **(2) HONDA**

Model WP20X, 2" Centrifugal Pumps, Honda 4HP • 2"

Diaphragm Pump, Briggs & Stratton 3HP • 2" Suction

and Discharge Hose • **PARTNER Model K950 Demo**

Saw • **PARTNER Model K950 Gas Powered Demo**

Saw with 16" diamond blade • **STIHL Model TS460 Gas**

Powered Demo Saw • **STOW Gas Powered Demo**

Saw • **Hand Tools** • Rakes • Shovels • Lutes

