

(9) TRACTOR LOADER BACKHOES AND ATTACHMENTS

1999 CASE MODEL 580 SUPER L SERIES II



(3) 1999 CASE Model 580 Super L Series II, 4x4 Tractor Loader Extend-A-Hoes

1999 CASE Model 580 Super L Series II, 4x4 Tractor Loader Extend-A-Hoe, s/n JJG0273516, Case diesel and shuttle, general purpose loader bucket with bolt-on cutting edge, 18" digging bucket, manual quick coupler, enclosed ROPS cab with light package, 12x16.5NHS front and 19.5Lx24 rear tires. In good condition with good tires.

1999 CASE Model 580 Super L Series II, 4x4 Tractor Loader Extend-A-Hoe, s/n JJG0273604, Case diesel and shuttle, general purpose loader bucket with bolt-on cutting edge, 18" digging bucket, manual quick coupler, enclosed ROPS cab with light package, 12x16.5NHS front and 19.5Lx24 rear tires. In good condition with fair to good tires.

1999 CASE Model 580 Super L Series II, 4x4 Tractor Loader Extend-A-Hoe, s/n JJG0274100, Case diesel and shuttle, general purpose loader bucket with bolt-on cutting edge, 18" digging bucket, manual quick coupler, enclosed ROPS cab with light package, 12x16.5NHS front and 19.5Lx24 rear tires. In good condition with good tires.

1992 JOHN DEERE Model 410D, 4x4 Tractor Loader Backhoe, s/n T0410DF786107, John Deere diesel and shuttle, general purpose loader bucket with bolt-on cutting edge, 24" digging bucket, enclosed ROPS cab, 12x16.5 front and 19.5x24 rear tires. In fair condition with fair to good tires.

CASE Model 580CK Tractor Loader Backhoe, s/n 8330373, 4 cylinder diesel and shuttle, general purpose loader bucket, 16" digging bucket, and 14.9x24 rear tires. In fair condition with fair tires.

1993 ALLIED Hydraulic Demolition Hammer, s/n 3506T15754 (Fits Case 580) • **WOODS 9000 Hydraulic Plate Compactor** (Fits Case or Komatsu) • **Case 580 Digging Buckets**: 36"; 30"; 24" • (4) Frost Teeth (Fits Case 580) • **Unused Cutting Edge**, with bolts (Fits Case 580)

(2) 1999 JCB Model 214E Series 4



(2) '99 JCB 214E, 4x4 Backhoes

1999 JCB Model 214E Series 4, 4x4 Tractor Loader Backhoe, s/n SLP214TCXE0483569, Perkins 4 cylinder diesel and shuttle, general purpose loader bucket with bolt-on cutting edge, 24" digging bucket, enclosed ROPS cab, and 12x16.5 front and 19.5Lx24 rear tires. In good condition with good tires.

(2) 1994 CASE MODEL 590 & 580 TURBO'S



'94 Case 590 and '94 Case 580 Turbo, 4x4 Extend-A-Hoes

1994 CASE Model 590 Turbo, 4x4 Tractor Loader Extend-A-Hoe, s/n JJG0207599, Case Turbo diesel and shuttle, general purpose loader bucket with bolt-on cutting edge, 24" digging bucket, enclosed ROPS cab with heat and light package, 12x16.5 front and 19.5Lx24 rear tires. In good condition with fair to good tires.

1994 CASE Model 580 Super K Turbo, 4x4 Tractor Loader Extend-A-Hoe, s/n JJG0182968, Case Turbo diesel and shuttle, general purpose loader bucket with fork ears, 24" digging bucket, enclosed ROPS cab with heat, air conditioning, and light package, 12x16.5 front and 19.5Lx24 rear tires. In good condition with fair to good tires.

RUBBER TIRED LOADERS



'01 Volvo L70D

2001 VOLVO Model L70D Rubber Tired Loader, s/n L70DV37021, Volvo 6 cylinder diesel and 4 speed powershift, general purpose loader bucket with bolt-on cutting edge, hydraulic quick disconnect, ROPS canopy with light package, and Michelin 550/65R25 tires. In good condition with good tires.



(2) Nelson 250D Loaders

(2) NELSON Model 250D Rubber Tired Loader, s/n 3F1566D & 3F1545, Cummins 6 cylinder diesel and powershift, general purpose loader bucket, enclosed cab, and 20.5x25 tires. In fair condition with fair tires.

CRAWLER LOADERS

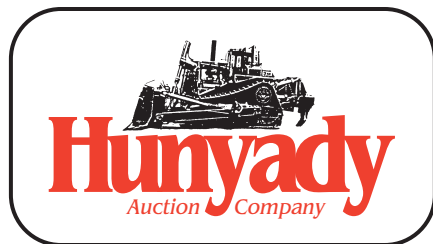
CATERPILLAR Model 955K Crawler Loader, s/n 85J1449, Cat 4 cylinder diesel and powershift, general purpose loader bucket with teeth, tow bar, and 15" DBG pads. In fair condition with fair undercarriage.

INTERNATIONAL Model 175C Crawler Loader, s/n 4290001U002431, International 6 cylinder diesel and powershift, loader bucket with teeth, ROPS canopy, and 16" TBG pads. In good condition with fair to good undercarriage.

INTERNATIONAL Model 175C Crawler Loader, s/n 4290001U002395, International 6 cylinder diesel and powershift, loader bucket with teeth, ROPS canopy, and 16" TBG pads. In good condition with fair undercarriage.



(2) Int'l 175C Loaders



1440 Cowpath Rd. • Hatfield, PA 19440 • 800-233-6898 • Fax: 215-361-9212

NOTICE: After (50) years in business and due to the recent passing of Mr. Ike Heckler, Ike Heckler, Jr. has decided to liquidate all equipment owned by the company. Additionally, included is a complete liquidation of Carl Church Equipment's remaining assets. A few consignments have also been added by SunTrust Leasing, as well as local contractors. Everything in the auction will positively sell to the highest bidder regardless of price!

LOCATION: The auction will be held at the Ike Heckler, Jr. shop and yard facility, located at 2278 East Buck Road, Pennsburg, PA 18073

INSPECTION: Items will be available for inspection one week prior to the auction from 8:00 a.m. until 5:00 p.m. (with the exception of Sat. and Sun., August 25th and 26th, at which time the site will be closed) or sale day morning from 7:00 a.m.

TERMS: Payment in full is required on sale day by cash, certified funds, or check with a bank letter of guarantee. Sample letter of guarantee: "We hereby guarantee the payment of our customer _____ written on his account up to _____ dollars for purchases at your auction sale on August 30, 2007." All guaranteed checks should be made payable to Hunyady Auction Co. ***Never A Buyer's Premium!***

SALES TAX: Since this contractor is selling items not normally sold in the course of his business, the Commonwealth of Pennsylvania considers this an isolated sale and does not require the auction company to collect sales tax. However, the Commonwealth does require the collection of sales tax on items being sold on behalf of lending institutions, equipment rental companies and dealers, etc. These items will be so noted in the sale day catalog.

REMOVAL: After complete payment, all sale items may be removed on sale day as long as the removal activity is not disruptive to the sale and only until 5:00 p.m. Items may also be removed Friday, August 31, Tuesday, September 4 and Wednesday, September 5, from 8:00 a.m. until 5:00 p.m. All items must be removed no later than Wednesday, September 5, at 5:00 p.m. (Please note: The site will be closed for the Labor Day Holiday Weekend from Saturday, September 1 through Monday, September 3)

SALE SITE DIRECTIONS: FROM THE PA TURNPIKE NORTHEAST EXTENSION (INTERSTATE 476): Take Exit 44 (PA 663 - Quakertown/Pottstown). After tollbooth, proceed to traffic light and turn right onto Route 663 South. Proceed on Route 663 South to 2nd traffic light (approx. 3.5 miles) and turn left onto Geryville Road. Proceed (0.3) miles to East Buck Road and turn right. Proceed (0.6) miles to sale site on left.

AIRPORT INFORMATION: The area is serviced both commercially and privately through Lehigh Valley International Airport. Rental cars are available.

MOTEL INFORMATION: Holiday Inn Express (215) 529-7979 • Comfort Inn & Suites (215) 538-3000 • Hampton Inn (215) 536-7779 (All hotels are located just off the Quakertown Exit of the PA Turnpike)

PA AUCTION LICENSE NO: AY000281

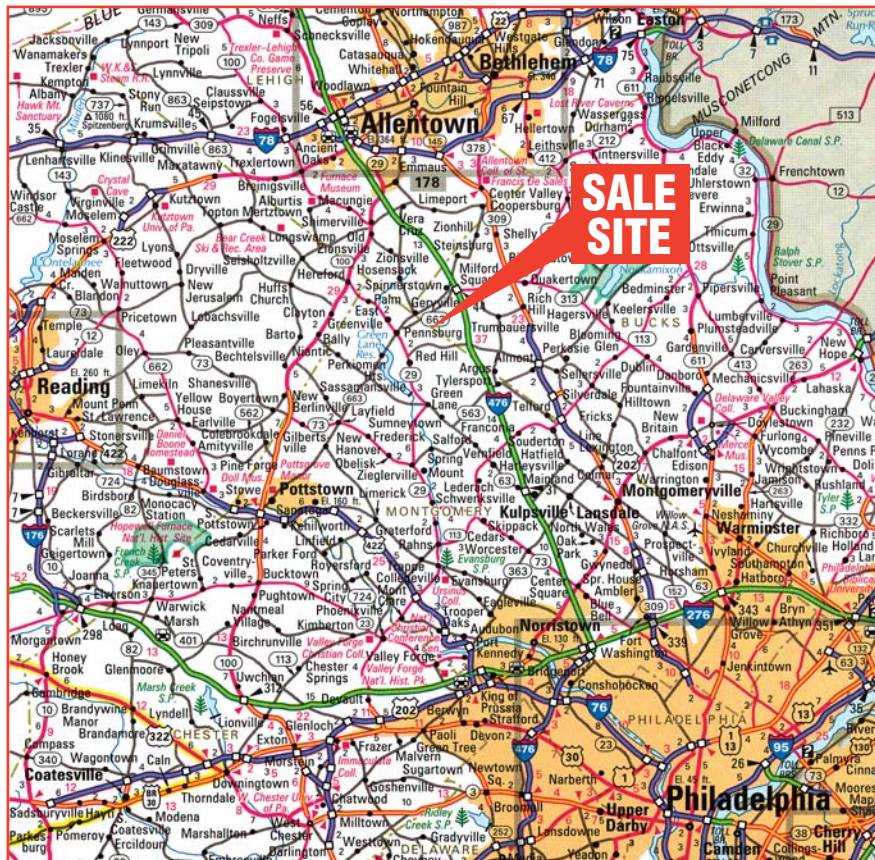
SALE SITE PHONE NUMBER: (215) 361-9099 • SALE SITE FAX NUMBER: (215) 361-9212

SHOP TOOLS

LINCOLN 225 Amp Electric Arc Welder • FORNEY C5 Electric Arc Welder • 100 Amp Electric Arc Welder • KARCHER HDS600C, 1,000 PSI Portable Steam Cleaner • Heavy Duty Horizontal Electric Shop Air Compressor • Portable Electric Air Compressor • CENTRAL PNEUMATIC Portable Sand Blaster • WAGNER PAINT CREW 2,800 PSI Electric Paint Sprayer • GRACCO Paint Mixer/Pump • REDDY 110,000 BTU Portable Space Heater • Large Portable Space Heater • Portable 1/2 Ton Jack • Large Floor Axle Jack • Portable Stand • (6) Floor Jacks • (8) Hydraulic Bottle Jacks • (11) Jack Stands • (3) Vises • Large Quantity of Chains & Binders • (2) Bolt Bin Carousels with hardware • (3) Shopmade Wood Bolt Bins with hardware • Bolt Bins and Parts Cabinets • (5) Drums with assorted lubricants • Pneumatic Luber • (3) Manual Gear Oil Pumps • (2) Shop Vacs • RIDGID 14" Electric Chop Saw • CRAFTSMAN Drill Press • Belt Driven Lathe • Dual Wheel Bench Grinder • C-Clamps • Pipe Wrenches • Pipe Threading Tools • Wheels Pullers • (2) Rolling Tool Chests with tools • Stand with work table • Hand Tools • Impact Sockets • Socket Sets • Electric Drills, Grinders, Saws and Sanders • Pneumatic Hand Tools • DEVILBLISS Pneumatic Tool Kit • Shop Creeper • (2) Battery Chargers • Steel Cabinets, Shelving, Shop Tables and Shop Carts • Cutting Torch • (2) Pallet Jacks

BUILDING MATERIAL AND MISCELLANEOUS

(1 roll) Approx. 12'6"x1,000' Geotextile Fabric • (1 roll) 7' Erosion Matting • (2 rolls) EXCELSIOR Mat 2, with spikes • Large Assortment of Lumber • Assorted Concrete Block, Brick and Reinforcing Wire • 4" Reinforcing Rebar Chairs • Antique Tools, Fixtures and Lanterns • Lawn Wagon • Lawn Roller • Large Assortment of Miscellaneous Hardware • PIPER J2 or J3 Fuselage • SCHRAMM Air Compressor (Parts Only) • JOHN DEERE 111 Riding Mower (Parts Only) • Miscellaneous Pipe • (2) Portable Bomb Jacks and Heavy Duty Winch • (2) Rolls of Wire Rope • Radiators • Brake Rotors • Miscellaneous Belts • Aluminum & Fiberglass Extension Ladders • Wash Sink • OLIVER Antique Jig Saw



ABSOLUTE AUCTION

COMPLETE LIQUIDATION

Thursday, August 30, 2007 - 9:00 A.M.

'97 FORD LTL9000

IKE HECKLER, JR.

Pennsburg, PA • (Quakertown/Allentown Area)



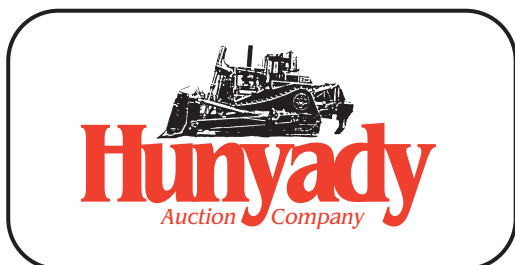
(2) '99 JCB 214E, 4x4 BACKHOES



'95 CAT 312



'01 VOLVO L70D



1440 COWPATH RD. • HATFIELD, PA 19440
215/361-9099 • Fax: 215/361-9212

PRE-SORTED
 FIRST CLASS MAIL
 US POSTAGE
PAID
 HAVERTOWN, PA
 PERMIT #45



HYDRAULIC EXCAVATORS



`95 Cat 312

1987 JOHN DEERE Model 70D Hydraulic Excavator, s/n CK070DD009070, John Deere diesel and hydraulic drive, articulated off-set boom and dipper stick, 5'3" dipper stick, 18" and 24" digging buckets, 7'6" backfill blade, 24" TBG pads, and 8'11" crawlers. In fair to good condition with good undercarriage.

`87 JD 70D

POCLAIN Model 160CK Hydraulic Excavator, s/n 0160-05-0213714, Deutz 6 cylinder diesel and hydraulic drive, 9' dipper stick with thumb bracket, 36" digging bucket, 14'3" crawlers, and 33.5" TBG pads. In fair to good condition with good undercarriage.

COMPACTION EQUIPMENT



`97 Hamm 2320D

1997 HAMM Model 2320D Vibratory Compactor, s/n 40536, Deutz diesel and hydrostatic, 66" smooth drum, drum drive, ROPS canopy, and 14.9x24 tires. In good condition with good tires.

1989 RAMMAX Model P33/24 Trench Compactor, s/n 7091, Hatz diesel and hydrostatic, 33" split padfoot drum. In fair condition.

9' Double Drum Tow Behind Sheeps-foot Roller

AERIAL LIFTS

2001 GENIE Model S-60, 60' 4x4 Aerial Lift, s/n S60-7085, Deutz B/FL, 1011F diesel and hydraulic drive, 30"x72", 600# 2-man material basket, and 385/65D19.5 tires. In good condition with good tires.

1995 CONDOR Model 68, 68', 4x4 Aerial Lift, s/n P2526677A, Ford gas and hydrostatic, 15x19.5 tires. In good condition with good tires.



`01 Genie S-60, 60' 4x4

ASPHALT PAVERS AND ROLLERS

BLAW-KNOX Model PF-65 Rubber Tired Asphalt Paver, s/n 0159-002, Ford 4 cylinder gas and direct drive, 8' vibratory heated screed with 2' strikeoff and 14.00x20 rear tires. In fair condition with good tires.

BLAW-KNOX Model PF-65 Rubber Tired Asphalt Paver, s/n 0105-008, Ford 4 cylinder gas and hydrostatic, 8' vibratory heated screed with 2' strike-offs. In fair condition.

2000 STONE Model DDR3100 Vibratory Roller, s/n 1496139, Honda 18HP V-Twin gas and hydrostatic, 36" smooth drums, drum cleaners, and water spray system. In good condition.

WESTERN Model R2000 Tandem Roller, s/n 5322, Honda 8HP gas and hydrostatic, 28" front split and 32" rear smooth drums, and shopmade single axle tilt deck tag-a-long trailer with 44"x8' deck and 205/75R15 tires. Roller in fair condition. Trailer in fair to poor condition with fair tires.

(1) of (2) Blaw-Knox PF-65 Asphalt Pavers

CRAWLER TRACTORS, PULL SCRAPER, AND TOW-BEHIND RIPPER

1998 DRESSER Model TD-7H Crawler Tractor, s/n 4700002P026039, Komatsu 410, 4 cylinder diesel and powershift, 6-way straight blade, ROPS canopy with light package, and tow hitch. In good to very good condition with very good undercarriage.



`98 Dresser TD-7H

1987 JOHN DEERE Model 450E Crawler Tractor, s/n TD450EC739636, John Deere diesel and hi-lo reversing, 6-way straight blade, ROPS canopy with soft canopy cover and heat, and 15.5" DBG pads. In good condition with good undercarriage.

CATERPILLAR Model D6 Crawler Tractor, s/n 9U26553, Cat D318 diesel with pony start and direct drive, straight blade with C-frame, adjustable drawbar, and 20" SBG pads. In fair condition with poor to fair undercarriage.



OLIVER Model OC9 Series B Crawler Tractor, s/n 801-257-3116, 4 cylinder diesel and direct drive, 6-way straight blade, adjustable drawbar, and 12" SBG pads. In fair condition with fair undercarriage.

Oliver OC9 Series B

INTERNATIONAL Model 500D Crawler Tractor, s/n H4165S, 4 cylinder diesel and direct drive, 6-way straight blade, adjustable drawbar, and 14" SBG pads. In fair condition with fair undercarriage.

PULLMAN Model S-1500 Cable Pull Scraper, s/n A54KS58. In good condition. • Tow Behind Multi-Shank Ripper, (3) ripper pockets with (1) tooth and steel wheels. In good condition.



`96 John Deere 7775

1996 JOHN DEERE Model 7775 Skid Steer Loader, s/n 025960, John Deere diesel and hydrostatic, 72" general purpose loader bucket, front auxiliary hydraulics, enclosed ROPS cab, and 10x16.5NHS tires. In good condition with fair to good tires.

MELROE Model LT203, 48" Hydraulic Trencher Attachment, s/n 706200191 • **MELROE 60" Hydraulic Sweeper Attachment**

ANTIQUE UTILITY TRACTORS AND ATTACHMENTS

FARMALL Model M Utility Tractor, s/n Unknown, gas to diesel and direct drive, adjustable drawbar, PTO, electric starter and manual start crank shaft, and 6.00x16 front and 12x38 rear tires. In good condition with fair tires. (Restored)

FORD Model 8N Utility Tractor, s/n Unknown, 4 cylinder gas and direct drive, 3-point hitch, PTO, and 4.00x19.5L front and 12.4x28 rear tires. In good condition with good tires.

FORD Model 8N Utility Tractor, s/n Unknown, 4 cylinder gas and direct drive, 3-point hitch, PTO, and 6.00x16 front and 11.2x28 rear tires. In fair to good condition with fair tires.

FORD Model 8N Utility Tractor, s/n Unknown, 4 cylinder gas and direct drive, 3-point hitch, PTO, and 7.00x16 front and 10x28 rear tires. In fair to good condition with good tires.

9' 2-Gang Disc Harrow • 7' 2-Gang Disc Harrow • 9' Tow Behind Gang Mower • (2) FERGUSON Bottom Plows, 3-point hitch • WOODS Model RM600, 6' Finish Mower, 3-point hitch • 5' Bush Hog, 3-point hitch • 8' Stone Rack, 3-point hitch • Post Hole Digger with 12" auger, 3-point hitch • 24" Drag Bucket, 3-point hitch • (2) Steel Wheels and Axle (Antique Farm Wagon)



Farmall Model M (Restored)



(1) of (3) Ford 8N Tractors

MOBILE BROOM, STRAW BLOWER, AND AIR COMPRESSORS

LAYMOR Model 6HB Mobile Broom, s/n 6HB220984487, Kubota diesel and hydrostatic, 6' hydraulic broom with power angle and water system with broom spray, and roll-bar with sun canopy. In good condition.



AIRMAN Model PDS130X, 130CFM Portable Screw Type Air Compressor, s/n 54-6020059, Isuzu diesel engine. In good condition.

JAEGER Model 120CFM Portable Air Compressor, 4 cylinder gas engine. In fair to good condition.

BOOM TRUCK, FLATBED TRUCKS, AND WATER TRUCK

NATIONAL Model 656, 12.5 Ton Hydraulic Boom, s/n 13838, 3-section, 55' boom, mounted on 1983 FORD Model 9000 Tandem Axle Flatbed Truck, Cat 3306 diesel and Roadranger RT11609, 9 speed, 15' flatbed, rear tow with air, 224" wheel-base, (6) hydraulic outriggers, and 11R22.5 tires. In fair condition with good tires.



National 12.5 Ton Boom Truck

1965 INTERNATIONAL Model Load Star 1800 Sign Truck, 6 cylinder gas and 5 speed, Arlo model 2100 electric telescope crane, 2,000# capacity, 85' boom, 48 volt DC, (2) on-board chargers. In fair to poor condition with fair to poor tires.

1992 KENWORTH Model T-400 20' Flatbed Truck, Cat 3306, 350HP diesel and 9 speed, 22' steel flatbed, double frame, air ride suspension, aluminum front Budds, rear tow with electric, air conditioning, cruise control, and 285/75R24.5 tires. In fair to good condition with good tires.

1976 FORD Model F-250 Custom Flatbed Truck, 390, V-8 gas and automatic, 8' steel flatbed with wood sides. In fair condition with fair tires.

1975 INTERNATIONAL Cargo Star 1950B Water Truck, Cat 3208 diesel and automatic, 5,000 gallon aluminum tank, Briggs and Stratton 18HP pump, front and rear spray, and 10.00x20 tires. In fair condition with fair tires.

DUMP TRUCKS AND TAG-A-LONG TRAILERS

1997 FORD Model LTL9000 Tri-Axle Dump Truck, Cat 3406E, 430HP diesel and Fuller 10 speed, 2006 J&J 18' heated steel dump body with 1/4" floor plate, air gate, Aero power tarp, single chute, 44,000# rears, 18,000# front axle, 20,000# lift axle, tow package with air, aluminum Budds, twin 65 gallon fuel tanks, 385/65R22.5 lift and front tires, and 11R24.5 rear tires. In good condition with good tires (very good rear).

`97 Ford LTL9000 Tri-Axle and `06 Eager Beaver 10 Ton condition with good tires (very good rear). **(15,000 Miles On Cat Rebuild) (New J&J Body with Hoist and Tow Package Installed July 2006)**

1974 MACK Model R685ST Tandem Axle Dump Truck, Mack 6 cylinder diesel and 6 speed lo hole, 14' steel dump body and 10.00R20 tires. In fair to poor condition with fair tires.

1974 INTERNATIONAL Model 1600 Single Axle Dump Truck, V-8 gas and 4 speed with 2 speed rear, Galion Peabody 8' steel dump body, 9' snow plow with power angle, and 10.00x20 tires. In fair condition with fair tires. (No Title)

2006 EAGER BEAVER Model 10HA-PT, 10 Ton Tandem Axle Tag-A-Long Trailer, 8'x19' load deck with 6' beavertail and ramps, roto-rings tie downs, air brakes, all wheel anti-lock brakes system, 25,900# GVWR, and LT235/85R16 tires. In very good condition with very good tires.

`06 Eager Beaver 10 Ton 1988 EAGER BEAVER Model 20HAL, 20 Ton Tandem Axle Tag-A-Long Trailer, 8'x17' level deck, 5' beavertail and ramps, air brakes, spring suspension, 47,050# GVWR, chain dogs, and 215/75R17.5 tires. In good condition with good tires.

1999 CUSTOM TRAILER 5 Ton Tag-A-Long Trailer. In fair to good condition.

1981 BUTLER Tandem Axle Tilt Deck Tag-A-Long Trailer, surge brakes and 10,000# GVWR. Reported to be in fair to good condition with fair to good tires.

1980 BUTLER Single Axle Tilt Deck Tag-A-Long Trailer, 10'x5'6" steel tilt deck, electric brakes, and 5,200# GVWR. In fair to good condition with fair to good tires.

1989 INTERNATIONAL Model C-16 Tandem Axle Tag-A-Long Trailer, 8,000# GVWR, 6'x16' level deck, ramps, electric brakes, and 7.00x15 tires. In good condition with good tires. (No Title)



SPORT UTILITY VEHICLE AND CARS



`05 Ford Expedition 4x4

2005 FORD Model Expedition Eddie Bauer Edition 4x4 Sport Utility Vehicle, V-8 gas and automatic, full power package, leather interior, power sunroof, running boards, heated seats and mirrors, keyless entry, air conditioning, cruise control, back-up sensor alarm, AM/FM CD player, and 265/70R17 tires. In good condition with good tires.

1976 CADILLAC Model DeVille 4-Door Sedan, V-8 gas and automatic, leather interior, power windows, locks and mirrors, air conditioning, and cruise control. In good condition with good tires.

1971 MERCEDES Model 220D-8, 4-Door Sedan, Mercedes 4 cylinder diesel and 4 speed, leather interior, air conditioning, and 195/75R14 tires. In fair to good condition with good tires.

1973 VOLKSWAGEN Model Thing 1500, 4-Door Convertible, 4 cylinder gas and 4 speed. In good condition with fair to good tires. (Top Needs Repair)

MECHANICS AND PICKUP TRUCKS AND TRAILERS

2001 FORD Model F-350XL Super Duty, 4x4 Extended Cab Mechanics Truck, Power Stroke 7.3 liter diesel and 5 speed, Reading 9' mechanics body, air conditioning, cruise control, and LT265/75R16 tires. In fair to good condition with fair to good tires.



1989 CHEVROLET Model 3500 Mechanics Truck, 5.7 liter, V-8 gas and automatic, Reading 11' mechanics body, 100 gallon fuel tank with 12 volt pump, dual rear wheels, pintle hitch, and LT215/85R16 tires. In fair to good condition with good tires.

1995 FORD Model F250XL, 4x4 Extended Cab Pickup Truck, Power Stroke 7.3 liter diesel and automatic, 8' bed, 105 gallon step fuel tank, cross toolbox, ladder rack, dual fuel tanks, air conditioning, cruise control, and LT265/75R16 tires. In good condition with good tires.

1995 FORD Model F250XL, 4x4 Extended Cab Pickup Truck, Power Stroke 7.3 diesel and automatic, 8' bed, 105 gallon step fuel tank, cross toolbox, ladder rack, dual fuel tanks, air conditioning, cruise control, and LT265/75R16 tires. In good condition with good tires.

`85 Ford F-250 4x4 and LT265/75R16 tires. In good condition with good tires.

1991 CHEVROLET Model 1500 W/T Pickup Truck, 4.3 liter, V-6 gas and 5 speed, 8' bed with liner, fuel tank with 12 volt pump, bumper hitch, and P235/75R15 tires. In fair to good condition with good tires.

1985 FORD Model F-250, 4x4 Extended Cab Pickup Truck, diesel and automatic, 8' bed, Western 8'6" snow plow with power angle, and 235/85R16 tires. In fair condition with good tires.

MASTER TOW Single Axle Car Dolly • (2) FRUEHAUF 25 Ton Tandem Axle Rigid Lowboy Trailers, beavertail, and 8.25x15 tires. In poor condition. (No Titles)

ANTIQUE TRUCKS AND TRUCK ACCESSORIES



`48 Ford F3



`50 Ford F1

1948 FORD Model F3, 3/4 Ton Flatbed Truck, Flathead 6 cylinder gas and manual, 9' steel flatbed. In fair condition. (No Title)

1950 FORD Model F1, 1/2 Ton Flatbed Truck, Flathead 6 cylinder gas and manual, 7'6" steel flatbed. In fair condition. (No Title)

1944 FORD Single Axle Cab & Chassis, V-8 gas and manual with 2 speed rear, PTO. In fair condition. (No Title)

1948 INTERNATIONAL Model KB-10 Single Axle Truck Tractor, 6 cylinder gas and 4 speed with 2 speed rear, air brakes and (2) extra front grilles. In fair condition. (No Title)

1950 INTERNATIONAL Model KB-10 Single Axle Dump Truck, 6 cylinder gas and 4 speed with 2 speed rear, 9'6" steel dump body and air brakes. In fair condition. (No Title)

INTERNATIONAL Tandem Axle Dump Truck, 14' steel dump body. In poor condition. (Parts Only) (No Engine) (No Title)

INTERNATIONAL Model V225A Single Axle Plow Truck, V-8 gas and 4 speed, 9' snow plow and shopmade counterweight bed. In fair condition with fair tires. (No Title)

(1) 7', (1) 10', (2) 11' and (1) 12' Snow Plows with manual angle • 6'6" Utility Body • Pickup Cross Toolbox • Side Toolbox • Large Assortment of Used Truck Tires, some with rims

OFFICE AND STORAGE TRAILERS

2002 8'x20' Single Axle Office Trailer, electric baseboard heat, window air conditioning unit, 100 amp electric service, single door, metal steps, built-in drafting table, file cabinet, desk, stool, (8) folding chairs, and small refrigerator. In good condition with good tires.

12'x60' Tandem Axle Office Trailer, HVAC system, lavatory, and (3) offices. • **12'x32' Tandem Axle Office Trailer**, lavatory, window air conditioner, and (2) offices • (6) Single Axle and Tandem Axle Storage Van Trailers. In poor and fair condition.

BOAT AND SNOWMOBILES



`04 Polaris 600CC and `93 Polaris 432CC (Trailer Sold Separately).

1976 WELLCRAFT 16'6" Bowrider, s/n WEL00349M74B165, Evinrude 115HP outboard motor, Trihaul trailer. In fair to good condition. (No Title)

2004 POLARIS Model XCSP Edge 600CC Snowmobile, loaded, cover. In very good condition.

1993 POLARIS Model Indy Sport 432CC Snowmobile, independent front suspension and cover. In good condition.

1996 LOAD RITE Single Axle Snowmobile Trailer, toolbox. In good condition.

(4) BOATEL SKI-BIRD Snowmobiles, Hirth 1 cylinder gas engines. Snowmobile Helmets and Clothes • Hydroplane Boat (For Use with Outboard Motor - No Motor)

CONTRACTORS TOOLS AND EQUIPMENT

TOPCON RT-105 Theodolite • 2003 STOW CC813H18 Walk Behind Concrete Saw, Honda 13HP gas engine, 18" cut depth, water system, and manual start • **2001 HOBART Model Titan 7000, 7,000 Watt Portable Welder/Generator**, s/n 91WS20030, Kohler 16HP V-Twin gas engine, welding leads. In very good condition • **3500 Watt Gas Powered Generator • TAPCO Pro 2000, 10'6" Aluminum Siding Brake • (2) HOLE HOG 3" Pneumatic Underground Piercing Tools • MBW Portable Mortar Mixer, Kohler 8HP gas • MIKASA and STONE Gas Powered Plate Compactor • (2) WACKER BS500 Gas Powered Foot Compactors • WACKER Gas Powered Foot Compactor • (2) 36" Concrete Power Trowels • WYCO Electric Concrete Vibrator • (6) 6'x24' & (6) 8'x24' Concrete Curing Blankets • 100' of Sidewalk Concrete Forms • STAUFER FABRICATION 3/4 Cubic Yard Concrete Bucket • Concrete Chute • Concrete Vibratory Screed • (2) Large Unused Diamond Blades • (1 box of 10) Unused Diamond Blades • GEORGIA Buggy • VALOR Masonry Saw • COLEMAN Powermate 1,850 Watt Gas Powered Generator • (3) 325 Gallon and (2) 125 Gallon Fuel Tanks • 500 Gallon Skid Mounted Fuel Tank, single wall, 12 volt pump • 300 Gallon Skid Mounted Fuel Tank, single wall, 12 volt pump • 90#, 65#, and 30# Pneumatic Paving Breaker • (8 sections) BIL-JAX Scaffolding Frames • (3) BIL-JAX 24"x8' Scaffold Planks • 14"x24' Aluminum Pick Board • CRAFTSMAN Transit, with tripod and grade pole • Manual Sewer Snake • (2) Asphalt Lutes • (4) Gas Powered String Trimmers • (8) Road Signs, with aluminum stands**