



'06 VOLVO L180E-2



'08 POWERSCREEN/bivi-TEC



'05 STERLING

25<sup>TH</sup>



**Hunyady**  
Auction Company

**ANNIVERSARY**

1990 - 2015

1440 COWPATH RD. • HATFIELD, PA 19440  
215/361-9099 • Fax: 215/361-9212



PRE-SORTED  
FIRST CLASS MAIL  
US POSTAGE  
**PAID**  
HAVERTOWN, PA  
PERMIT #45

# **ABSOLUTE AUCTION** **COMPLETE LIQUIDATION**

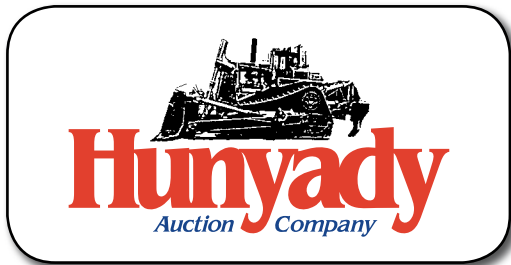
**South Tamaqua Coal Pockets, Inc.**

**THURSDAY, NOVEMBER 12, 2015 - 9:00AM**



**Tamaqua, Pennsylvania**





**South Tamaqua Coal Pockets, Inc.**

Bid Live Online | proxibid.  
www.proxibid.com/hunyady



**Notice:** After (40+) years in the anthracite industry the owners of South Tamaqua Coal Pockets, Inc. have decided to cease operations and completely liquidate all machinery, equipment, rolling stock, parts & supplies inventories. All items are owned by South Tamaqua and will positively sell to the highest bidder regardless of price, without minimums, reserves, or Buyer's Premium!

**Location:** The auction will be held at 799 West Penn Pike (Route 309), Tamaqua, PA 18252

**Auctioneer's Note:** All items will be sold from the South Tamaqua Coal Pockets location. Items not on site (Tuscarora/Kaska), noted after description, will be sold in absentia, by photo. Inspection of equipment on remote locations will be by appointment. Please call auction company for directions. All visitors must sign in at mine office.

**Sale Site Directions:** The auction site is in South Tamaqua, Pennsylvania on Route 309, approximately (1.3) miles north of the Route 443 junction.

**FROM PA NORTHEAST EXTENSION (Interstate 476):** Take Exit #74 (Mahoning Valley), follow Route 209 South towards Lehighton. Follow Route 209 South approximately (3) miles to Route 443 West. Proceed on Route 443 West approximately (12.8) miles. Turn right on Route 309 North and proceed (1.3) miles to auction site on right.

**TRAVELING SOUTHBOUND ON INTERSTATE 81:** Take Exit #138 (McAdoo) Follow Route 309 South toward Tamaqua approximately (11.9) miles to auction site on left.

**TRAVELING NORTHBOUND ON INTERSTATE 81:** Take Exit #131A (Hometown) Follow Route 54 East (7.2) miles to Route 309 South. Proceed on Route 309 South (4.9) miles to auction site on left.

**Online Bidding:** Live internet bidding will be provided by Proxibid. Proxibid will require a 2.5% internet provider service fee (capped at \$750) that will be charged for each item purchased online. All interested internet bidders are required to register w/Proxibid 24 hours prior to the auction at www.proxibid.com/hunyady or call 877-505-7770

**Terms:** Payment in full is required on sale day by cash, certified funds, or check with a bank letter of guarantee. Sample letter of guarantee: "We hereby guarantee the payment of our customer \_\_\_\_\_ written on his account up to \_\_\_\_\_ dollars for purchases at your auction sale on November 12, 2015" All guaranteed checks should be made payable to Hunyady Auction Co.

**Sales Tax:** Since this contractor is selling items not normally sold in the course of his business, the Commonwealth of Pennsylvania considers this an isolated sale and does not require the auction company to collect sales tax.

**Financing:** Financing is available, please contact Susan (215) 361-9099 at the auction company for details.

**Inspection:** Items will be available for inspection beginning one week prior to the auction from 8:00AM to 4:00PM, or sale day morning beginning at 7:00AM. The site will be closed Saturday and Sunday, November 7th and 8th

**Removal:** After complete payment, all sale items may be removed on sale day as long as the removal activity is not disruptive to the sale and only until 5:00PM. Items may also be removed Friday, November 13th and Monday thru Thursday, November 16th thru November 19th from 8:00AM until 4:00PM. All items must be removed no later than Thursday, November 19, 2015 at 4:00PM

**Airport Information:** The area is serviced commercially and privately through Philadelphia International Airport and Lehigh Valley International Airport (Allentown, PA)

**Hotels:** Hampton Inn Lehighton (610) 377-3400, 877 Interchange Road, Lehighton, PA • Holiday Inn Express & Suites Frackville, (570) 874-1700, 958 Schuylkill Mall, Frackville, PA 17931

**Sale Site Phone: (267) 446-3808 (Beginning November 2, 2015) • Sale Site Fax: (888) 859-8958**

**COAL AND PROCESS PARTS AND COMPONENTS**

**WARMAN & WEMCO** Pump Parts (See Inventory on Website) • **ELRO** IP800 Peristaltic Hose Pump (New) • **TABOR** Screen Vibrating Mechanism • **TABOR** Screen Parts-Blocks, Springs, etc. • **GUNDLACH** Crusher Rolls • Troughing and Return Idlers • Drive Belts • Poly Deck Screen Fabric • Screen Fabric • Belt Scrapers • Idlers • Rollers • PLUS MORE!

**SPIRALS, THICKENER, AND FLOTATION CELLS**

**KREBS** Four-Start Spirals, with distribution box. In fair condition • **EIMCO** 12' Thickener Tank. In fair condition • **(2) WEMCO-ENVIROTECH** Flotation Cells, s/n's 784520-11 and 784520-13. In good condition. (Unused)

**CONTRACTORS TOOLS, STEEL, AND MISCELLANEOUS**



**NEW AND USED ON-OFF ROAD TIRES**



**COAL FIRED BOILERS**

**MILLER** Trailblazer 302 Welder/Generator, s/n LJ080044Q, 3 cylinder diesel engine • **MILLER** 300 Amp Electric Welder, with wire feed • **SNAP-ON** Welder • **THERMAL DYNAMICS** Plasma Cutter • Shop Welders • **INGERSOLL-RAND** T30 Vertical Shop Air Compressor • Horizontal Shop Air Compressor • **KENOWA** 8,000 Watt Gas Powered Generator • **WALKER TURNER** (4) Spindle Drill Press • Drill Presses • **MK** Wet Saw • **PORTO MAG** Magnetic Drill Press • **HYD MECH** S20 Horizontal Metal Cutting Band Saw, with control station • **CAROLINA** Band Saw • **GILSON** TM36 Test Shaker, s/n T1523 • **GILSON** Test Screens • **FAIRBANKS** Platform Scale • Model M2000 Pressure Washer, skid mounted with water tank. In poor condition. • Bolt Bins • Pallet Racking • Pumps • Banding Tools • Ice Melt

**Steel Inventory Including:** Stainless Steel Sheets • Steel Sheet • I-Beam • Channel •

Angle • Flat Stock • Tube Stock • Bar Stock

**TRAILMOBILE** 40' Tandem Axle Storage Trailer and Other Storage Trailers • (4) 8'x20' Containers • **(3) BURNHAM** Model 4NW-345A Coal Fired Boilers, s/n's 29236, 29233, and 29232, 42.2 BHP gross output, with Fire Jet FJP burner/blowers, augers and stacks. In good condition • Large Quantity of On and Off Road Tires (New and Used) (24.5's etc.)



**GILSON TEST SHAKER**



**799 West Penn Pike (Route 309), Tamaqua, PA 18252**

**FUEL TANKS**



**HIGHLAND** 1,000 Gallon Fuel Tank, s/n M443507, double wall, equipped with Gas Boy 110-volt electric pump. In good condition • **HIGHLAND** 2,000 Gallon Fuel Tank, double wall, equipped with Gas Boy 110-volt electric pump. In good condition.

**HIGHLAND DOUBLE WALL**



## CRAWLER AND PORTABLE SCREENING PLANTS AND CONVEYORS

**2008 POWERSCREEN Model Chieftain 2100X Crawler Screening Plant**, s/n PID00124T89D10194, powered by Cat 4 cylinder diesel engine and hydrostatic drive, equipped with 6'x13' double deck hopper with hydraulic grizzly and belt feeder, 42" screen feed conveyor, 2008 bivi-TEC Model KRL/DD1600X6, 56"x20' 2-deck vibrating screen, s/n SBT1049, (2) 32" side discharge conveyors, 48" under screen discharge conveyor, and 20" TBG pads. In good condition with good undercarriage. (KASKA)



**'08 POWERSCREEN CHIEFTAIN 2100X WITH bivi-TEC**

**2005 POWERSCREEN Model Titan 1800 Crawler Screening Plant**, s/n 12101423, powered by Deutz 4 cylinder, liquid cooled diesel engine and hydrostatic drive, equipped with 8'x16' dump hopper with 60" belt feeder, 5'x16' double deck vibrating screen, (2) 36" side discharge conveyors, 56" front discharge conveyor, 48" rear transfer conveyor, 36" swiveling rear discharge conveyor, and 20" TBG pads. In good condition with good undercarriage.



**'05 POWERSCREEN TITAN 1800**



**'03 POWERSCREEN TITAN 1800**

**2002 POWERSCREEN Model Titan 1800 Crawler Screening Plant**, s/n 12100073, powered by Deutz 4 cylinder, liquid cooled diesel engine and hydrostatic drive, equipped with approximately 8'x15' dump hopper with belt feeder, 5'x16' double deck vibrating screen, remote, and 52" front and rear discharge conveyors. In good condition with good undercarriage. (KASKA)



**'02 POWERSCREEN TITAN 1800**



**'08 MCCLOSKEY S190**

**2008 McCLOSKEY Model S190 Portable Hydraulic Screening Plant**, s/n SA9000S1908M066243, powered by Cat 4 cylinder diesel engine, equipped with 6'x14' dump hopper with hydraulic grizzly and belt feeder, 48" screen feed conveyor, 5'x20' double deck vibrating incline screen, front discharge conveyor, (2) 30" hydraulic wing conveyors, mounted on tri axle carrier, and 235/75R17.5 tires. In good condition with good tires. (KASKA)

## CRAWLER TRACTOR



**1988 CATERPILLAR Model D7H Crawler Tractor**, s/n 5BF00501, powered by Cat 3306 diesel engine and powershift transmission, equipped with semi-U blade with tilt, ROPS over enclosed cab with heat and air conditioning, draw bar, and 22" SBG pads. In good condition with good undercarriage. (TUSCARORA)

**'88 CAT D7H**

**2002 EXTEC Model 5000 Turbo Portable Screening Plant**, s/n 6771, powered by 6 cylinder diesel engine, equipped with 6'x12' feed hopper with hydraulic grizzly and belt feeder, 36"x40' screen feed conveyor, 4'x12' double deck vibrating screen, (2) 28" side discharge conveyors, 46" rear discharge conveyor, mounted on tri axle carrier, and 275/70R225 tires. In fair to good condition with good tires. (TUSCARORA)



**'02 EXTEC 5000 TURBO**

**2003 POWERSCREEN Model Warrior 1800 Crawler Screening Plant**, s/n 12300118, powered by Perkins 4 cylinder diesel engine and hydrostatic drive, equipped with (2) wing conveyors, 5'x16' double deck, 20" TBG pads. (Completely Dismantled, Base Machine is a Warrior, Screen is From a Titan) (Parts Only) (TUSCARORA)

**2009 McCLOSKEY 36"x80' Portable Conveyor**, s/n 70020, powered by Kubota 4 cylinder diesel engine, equipped with manual oscillating wheels, hydraulic raise and lower, and 255/70R22.5 tires. In good condition with good tires. (KASKA)



**'09 MCCLOSKEY 36"X80'**



**'08 MCCLOSKEY 36"X80'**

**2010 McCLOSKEY Model 36"x80' DKT, Hydraulic Portable Radial Stacker**, s/n 70679, powered by Kubota 4 cylinder diesel engine, equipped with hydraulic raise, manual angle wheels, aluminum wheels, and 255/170R22.5 tires. In very good condition with excellent tires.

**2008 McCLOSKEY Model S36X80/DKT, 36"x80' Portable Hydraulic Conveyor**, s/n 13466, powered by Kubota 4 cylinder diesel engine, equipped with hydraulic raise and lower, and 255/70R22.5 tires. In good condition with good tires. (KASKA)



**'10 MCCLOSKEY 36"X80'**



**GRASAN 36"X75' HYDRAULIC POWERSCREEN 30"x60' Hydraulic Radial Stacking Conveyor**, s/n unknown, equipped with hydraulic raise, folding head section, and manual angle wheels. In good condition with good tires. (TUSCARORA)



**GRASAN 36"x75' Hydraulic Radial Stacker**, s/n 7536P2977, equipped with manual raise, manual angle wheels, and 8.00x20 tires. In good condition with very good to excellent tires. (TUSCARORA)

**POWERSCREEN 30"X60' HYDRAULIC**



## OFF ROAD WATER TRUCK



**1978 CATERPILLAR Model 769C Water Truck**, s/n 1X394, powered by Cat 3408 diesel engine and 7 speed powershift transmission, equipped with 8,000 gallon water body, (3) rear and (2) top mounted side air articulated spray heads, water cannon, supplemental steering, brake retarder, companion seat, and 18.00x33 tires. In good condition with very good tires. (TUSCARORA)

**'78 CAT 769C**



**RUBBER TIRED LOADERS AND ATTACHMENTS**

**2000 VOLVO Model L120C Rubber Tired Loader**, s/n L120CV62616, powered by Volvo TD73KDE diesel engine and powershift transmission, equipped with Volvo hydraulic coupler, auxiliary hydraulics, EROPS with heat and air conditioning, quick disconnect general purpose loader bucket, s/n 03-05-05, and 33.5R25 tires. (Reserved For Use During Loadout Until 11/19/15 @ Noon)



**'00 VOLVO L120C**

**2006 VOLVO Model L180E-2 Rubber Tired Loader**, s/n L180EV8321, powered by Volvo 6 cylinder diesel engine and powershift transmission, equipped with general purpose loader bucket with bolt-on cutting edge, EROPS with heat and air conditioning, high lift configuration, Load Rite L series 2180 bucket scale, and 26.5R25 tires. In good condition with good tires.



**'06 VOLVO L180E-2**



**'05 VOLVO L180E**

**2005 VOLVO Model L180E Rubber Tired Loader**, s/n L180EV6724, powered by Volvo D12CLCE2 diesel engine and powershift transmission, equipped with general purpose loader bucket with bolt-on cutting edge, EROPS with heat and air conditioning, Load Rite Pro bucket scale, and 26.5R25 tires. In good condition with good tires.

**2006 VOLVO Model L220E Rubber Tired Loader**, s/n L220EV4505, powered by Volvo 6 cylinder diesel engine and powershift transmission, equipped with coal bucket with Black Hawk cutting edge segments, EROPS with air conditioning, Loadrite L series 2180 bucket scale, and 29.5R25 tires. In good condition with good tires. (TUSCARORA)



**'06 VOLVO L220E**



**'99 VOLVO L220D**

**1999 VOLVO Model L220D Rubber Tired Loader**, s/n L220DV1270, powered by Volvo TD122KLE diesel engine and powershift transmission, equipped with JCB 8 yard general purpose loader bucket, EROPS with heat and air conditioning, and 29.5R25 tires. In good condition with fair to poor tires. (TUSCARORA)

**1999 VOLVO Model L220D Rubber Tired Loader**, s/n L220DV1220, powered by Volvo 6 cylinder diesel engine and powershift transmission, equipped with general purpose loader bucket with bolt-on cutting edge, EROPS with heat and air conditioning, high lift configuration, Load Rite LR925 bucket scale, and 29.5R25 tires. In good condition with good tires. (TUSCARORA)



**'99 VOLVO L220D**



**'00 VOLVO L330D**



**'99 VOLVO L330C**



**'98 VOLVO L330C**

**1974 CATERPILLAR Model 920 Rubber Tired Loader**, s/n 62K6280, powered by Cat 3304 diesel engine, equipped with enclosed ROPS cab, general purpose loader bucket, and 15.5x25 tires. In fair to good condition with 3 good and 1 fair to poor tires.



**CAT 920**

**2005 HOLMS Model SH-3.0 Power Angle 10' Broom Attachment**, s/n 11137, equipped with water system and quick disconnect. In good to very good condition. (Volvo L120)

**2002 HOLMS Model SH-3.0 Power Angle 10' Broom Attachment**, s/n 6244, equipped with water system and quick disconnect. In good condition. (Volvo L120)

**SWEEPSTER Model B626M8, 8' Dumping Broom**, s/n 0431006. In good condition.



**'05 HOLMS 10' BROOM (LOADER SEPARATE)**

**2000 VOLVO Model 83771, 60" Fork Attachment**, s/n 33095 778, quick disconnect. In good condition. (Volvo L120C) (Reserved For Use During Loadout Until 11/19/15 @ Noon)

**BALDERSON 34039 Fork Attachment (Cat 920)** • Detachable Loader Bucket (Volvo L180E/L150E) • 6 Yard Bucket (Volvo L180E/L50E) • 9 Yard Bucket (Volvo EMQ10) • **JRB WA500-3, 8yd3 General Purpose Bucket**, s/n AKR2160, 11' wide. In good to very good condition. (Komatsu WA500) • **VOLVO 93495, 9 yd3 General Purpose Loader Bucket**, s/n 01-01-04C, with bolt-on cutting edge, 13' wide. In good to very good condition. (Volvo L330) • Volvo L150 Loader Boom



**VOLVO 9 CUBIC YARD (L330)**

**DRAGLINES**



**MANITOWOC 3900B**

**1961 MANITOWOC Model 3900B Crawler Dragline**, s/n 39459, powered by Cummins 855, 6 cylinder 250HP diesel engine and torque converter, equipped with Hendrix 3.5 yard drag bucket, air controls, 95' bolt-together lattice boom, fairlead, 2-piece rear counterweight, and 38" smooth pads. In fair to good condition with fair undercarriage. (00,008 Hours On New Engine) (Rebuilt Drums) (TUSCARORA)

**1962 MANITOWOC Model 3900 Vicon Crawler Dragline**, s/n 39506, powered by Cummins 855 diesel engine and twin torque converters, equipped with approximately 4 yard drag bucket, 90' of bolt together angle boom, fairlead, air controls, 19'x16" crawlers, 2-piece rear counterweight, and 38" smooth pads. In fair to good condition with fair undercarriage. **Miscellaneous Dragline Buckets**, with hardware



**MANITOWOC 3900 VICON**



## ARTICULATED END DUMPS

**2006 VOLVO Model A40D Articulated End Dump**, s/n A40DV12864, powered by D12DA6E3 diesel engine and 4 speed automatic transmission, equipped with retarder, EROPS with heat and air conditioning, lined and heated bed with tailgate, companion seat, and 29.5R35 tires. In good condition with good tires. (Runs Well and Moves; Transmission Issues) (TUSCARORA)



**'06 VOLVO A40D**



**'04 VOLVO A40D**



**'03 VOLVO A40D**

**1997 VOLVO Model A40 Articulated End Dump**, s/n A40V60172, powered by Volvo 6 cylinder diesel engine and 4 speed automatic transmission, equipped with retarder, EROPS with heat, lined and heated bed with tailgate, and 29.5R25 tires. In good condition with fair to good tires. (Needs Drop Box Rebuilt) (TUSCARORA)



**'97 VOLVO A40**



**(2) VOLVO D12C Diesel Engines**, (1) running takeout, (1) complete core (Volvo A40D)

## TRUCK CRANE AND ROUGH TERRAIN CRANE



**'74 GROVE TMS475LP**

In fair to good condition with fair to good tires. (TUSCARORA)

**1989 P&H Model Omega CN128, 28 Ton Rough Terrain Crane**, s/n 55454, powered by Cummins 6 cylinder diesel engine and powershift transmission, equipped with 21' to 91' 4-section hydraulic boom, Liftek anti-2 block alarm, auxiliary hoist, 4-sheave hook block, ball hook, (4) hydraulic extending outriggers, enclosed cab with heat, and 20.5x25 tires. In good condition with good tires. (Reserved For Use During Loadout Until 11/19/15 @ Noon)



**'89 P&H CN128**

**P&H 34' Lattice Jib**, single sheave. In fair to good condition.

## HYDRAULIC EXCAVATORS AND GRADALL



**'07 KOMATSU PC400LC-7E0**

**1994 KOMATSU Model PC200LC-6L Hydraulic Excavator**, s/n A080702, powered by Komatsu 6 cylinder diesel engine and hydraulic drive, equipped with Geith 36" digging bucket, 9'6" dipper stick, EROPS with heat, and 27.5" TBG pads. In good condition with good undercarriage.

**2007 KOMATSU Model PC400LC-7E0 Galeo Hydraulic Excavator**, s/n A87460, powered by Komatsu EcoT3 6 cylinder diesel engine and hydraulic drive, equipped with 14'6" dipper stick, hydraulic plumbing, 56" Geith digging bucket, counterweight removal device, EROPS with heat and air conditioning, thumb attachment, and 31.5" TBG pads. In good condition with good undercarriage. (TUSCARORA)



**'94 KOMATSU PC200LC-6L**



**'01 GRADALL XL3100**

**CP 36" Digging Bucket**, s/n 39C40036. In good condition. (Komatsu PC400) • **HENDRIX 2yd3 Digging Bucket**, s/n 3037320-1. In good condition. (Komatsu PC400)



**HENDRIX 2 CUBIC YARD (PC400)**

**2001 GRADALL Model XL3100 Truck Mounted Excavator**, s/n 0313324, powered by Cummins 6 cylinder diesel engine and Fuller 9 speed transmission, equipped with 56" clean up bucket, EROPS with heat and air conditioning, 2-section hydraulic boom, remote travel, and 385/65R22.5 front and 10.00R20 rear tires. In good condition with good tires. (TUSCARORA)

## MOTOR GRADERS



**'77 CAT 16G**

**1977 CATERPILLAR Model 16G Articulated Motor Grader**, s/n 93U1072, powered by Cat 3406 diesel engine and powershift transmission, equipped with EROPS with heat, 16' fully hydraulic mold board, front push plate, rear mounted ripper with 3 shanks, and 23.5R25 tires. In good condition with fair tires. (TUSCARORA)

**1983 CHAMPION Model 720A Articulated Motor Grader**, s/n 720A-13-12-15824, powered by Detroit 6 cylinder diesel engine and powershift transmission, equipped with 14' fully hydraulic moldboard, EROPS with heat, front scarifier, and 17.5x25 tires. In good condition with fair tires.



**'83 CHAMPION 720A**



**'78 CLARK S501**

**1978 CLARK Model S501 All Wheel Drive Motor Grader**, s/n 622A088, powered by Detroit 6-71 diesel engine and powershift transmission, equipped with EROPS with heat, 12' fully hydraulic board, front scarifier, rear wheel steer, and 14.00R24 tires. In good condition with fair to good tires. (TUSCARORA)



**TRACTOR LOADER EXTEND-A-HOE AND SKID STEER LOADERS**



**'95 JCB 214 II 4X4**



**'11 NEW HOLLAND L218**



**1995 JCB Model 214, Series II 4x4 Tractor Loader Extend-A-Hoe**, s/n LP214TC-SE0432778, powered by 4 cylinder diesel engine and shuttle transmission, equipped with 24" general purpose loader bucket with bolt-on cutting edge, hydraulic coupler, front auxiliary hydraulics, EROPS with heat and air conditioning, JCB 12" digging bucket, and 14x17.5 front and 19.5Lx24 rear tires. In good condition with good tires

**Attachments:** 48" Detachable Fork Attachment (JCB 214) • 12" Backhoe Bucket (JCB 214)

**2011 NEW HOLLAND Model L218 Skid Steer Loader**, s/n JAF0L218CBM43873, powered by 4 cylinder diesel engine and hydrostatic transmission, equipped with 67" bucket with bolt-on cutting edge, high flow auxiliary hydraulics, EROPS with heat and air conditioning, and 10x16.5 tires. In good to very good condition with fair tires.

**2004 BOBCAT Model S175 Skid Steer Loader**, s/n 525212466, powered by Kubota 4 cylinder diesel engine and hydrostatic transmission, equipped with general purpose loader bucket with side mount bolt-on cutting edge, auxiliary hydraulics, and 10x16.5 tires. In good condition with good tires.

**48" Fork Attachment (Bobcat S175)**

**'04 BOBCAT S175**

**GENERATORS**

**1995 CATERPILLAR Model 3306, 225KW Generator**, s/n 9Y8208, powered by Cat 3306 diesel engine, model SR4 generator end, s/n 6EG01315. In good condition and MARTIN Model DD103 Generator, 140KW, 175KVA, s/n 122484105, powered by Detroit 6-71 diesel engine. In fair condition. (Not Running) (Mounted in 28 ft trailer body, with switch gear starters) (Buyer Must Load)

**CATERPILLAR 100KW Skid Mounted Generator Set**, s/n 5CA05478, engine s/n 83Z02058. In good condition.

**JOHN DEERE Model 363PSL16073602-1, 90KW Skid Mounted Generator**, s/n 643019, 480-volt, 6.6L diesel. In good condition.

**CATERPILLAR Model 3304, 105KW Skid Mounted Generator**, s/n 4B17548. In fair to good condition.



**'95 CAT 225KW**

**AIR COMPRESSORS, PUMPS, AND LIGHT PLANTS**

**2010 INGERSOLL-RAND Model P185WJD-T4I Portable Air Compressor**, s/n 417422UHUD75, powered by John Deere 4 cylinder diesel engine, equipped with 78x15 tires. In good condition with good tires.

**INGERSOLL-RAND 2-Stage Air Compressor**, powered by Honda GX390 gas engine.

**2007 GORMAN RUPP Model PA6C60-4045D, 6" Portable Pump**, s/n 1373198, powered by John Deere 4045DF270B diesel engine, equipped with air prime system, in frame fuel tank, and 225/75R15 tires. In good to very good condition with good to very good tires.

**GORMAN RUPP 4" Centrifugal Pump**, s/n 1046198, powered by Deutz diesel engine, skid mounted. In fair to good condition.

**THOMPSON Model 3312, 4" Self Priming Pump**, skid mounted

**2001 THOMPSON 4" Trailer Mounted Pump**, s/n 4HC007

**2002 INGERSOLL-RAND Light Source Portable Light Plant**, s/n 328298UCM789, powered by Kubota 3 cylinder diesel engine, equipped with manual raise, (4) lights, and 175/80R13 tires. In good condition with good tires.

**2003 INGERSOLL-RAND Light Source Portable Light Plant**, s/n 332616UIM789, powered by Kubota 3 cylinder diesel engine, equipped with manual raise, (1) light, and 175/80D13 tires. In fair condition. (Missing Lights)



**IR LIGHT PLANTS**

**AERIAL LIFT AND FORKLIFTS**

**2005 JLG Model 600AJ, 4x4 Aerial Lift**, s/n 0300081723, powered by Deutz 4 cylinder diesel engine and hydrostatic drive, equipped with 60' platform height, 2-section hydraulic boom, 5' boom extension, 36"x96" 500# capacity man/material basket, rotating and leveling, and 14x17.5 tires. In good condition with good tires.

**2002 JLG/GRADALL Model G6-42A, 6,000# Rough Terrain Telescopic Forklift**, s/n 0190310, powered by John Deere 4 cylinder diesel engine and powershift transmission, equipped with enclosed ROPS cab, heat, 3-section hydraulic boom, 42" fork height, 48" forks, carriage leveler, and 13.00x24 tires. In good condition with good tires. (Reserved For Use During Loadout Until 11/19/15 @ Noon)

**1999 TOYOTA Model 7FGU20, 3500# Cushion Tired Forklift**, s/n 82412, powered by 4 cylinder propane gas engine and shuttle transmission, equipped with semi enclosed ROPS, 189" 3-stage mast, side shift, 48" forks, and 7.00x12 front and 6.00x9 rear tires. In good condition with good to very good tires. (Reserved For Use During Loadout Until 11/19/15 @ Noon)

**1989 HYSTER Model H60XL, 6000# Capacity Solid Tired Forklift**, s/n A177B34826K, powered by 4 cylinder propane gas engine and hydrostatic transmission, equipped with 189" 3 stage mast, mast tilt, side shift, 60" forks, ROPS canopy, 7.00x15 front and 6.00x9 rear tires. In good condition with good tires.



**'05 JLG 600AJ**



**'02 JLG/GRADALL G6-42A**



**'99 TOYOTA 7FGU20**

**CRUSHING/SIZING PLANTS  
(SOLD PIECEMEAL AND ENTIRETY -  
BUYER MUST DISMANTLE AND LOAD)**

**Line #1**

**2008 PRODUCERS SUPPLY 20 Yd3 Feed Hopper**, s/n 20CYHOP30X17BF708, powered by 7.5HP electric motor, equipped with 30"x17" belt feeder, mounted on support structure, with variable speed controller. In good to very good condition.

**2011 GUNDLACH Model NANO 440S Roll Crusher**, s/n NANO440S-2622, powered by twin 50HP and 30HP electric motors, equipped with Enerpac hydraulic adjusting system, 38" rolls, remote lube, 12'6"x19' steel support structure, 14' high with expanded metal platform, stairs, and railing. In very good condition.

**PRODUCERS SUPPLY 30"x66' Lattice Conveyor**, s/n Unknown, powered by 10HP electric motor, equipped with catwalk with railing and safety shutdown. In very good condition.

**2011 GUNDLACH Model NANO 440S Roll Crusher**, s/n NANO440S-2622, powered by twin 50HP and 30HP electric motors, equipped with Enerpac hydraulic adjusting system, 38" rolls, remote lube, 12'6"x19' steel support structure, 14' high with expanded metal platform, stairs, and railing. In very good condition.

**Line #2**

**PRODUCERS SUPPLY 20 Yd3 Feed Hopper**, s/n Unknown, powered by 7.5HP electric motor, equipped with 30"x17" belt feeder, mounted on steel support structure, with variable speed controller. In good condition.

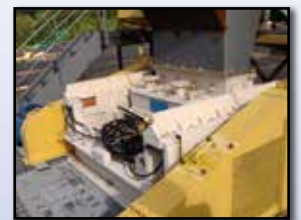
**PRODUCERS SUPPLY 30"x65' Lattice Conveyor**, s/n Unknown, powered by 10HP electric motor, equipped with catwalk with railing, and safety shutdown. In good condition.

**1992 (Original) 2003 (Rebuilt) GUNDLACH Model 2060D, 4-Roll Crusher**, s/n 2060D2115R, powered by 40HP electric motor, equipped with hydraulic adjust, mounted on 10'x15'x14H steel support structure, with expanded metal deck with stairs and railings. In good condition.

**NOTE:** The components will be offered individually, then the aggregate high bids will be increased by 10% and offered in an entire line. The items will sell to the highest bids, either totaled piecemeal or entirety. (Each Component With Individual Starters/Controllers)



**CRUSHING AND SIZING PLANTS**



**'11 GUNDLACH NANO 440S**



## CRUSHERS

**BROWN LENOX Model 42"x32" Portable Jaw Crusher**, s/n 120M4878, powered by Cat 3306 diesel engine with twin disc torque converter, equipped with 42"x16" vibrating plate feeder, 42"x32" jaw crusher, 40"x40" discharge conveyor, mounted on tri axle carrier, and 12R22.5 tires. In fair to good condition with good tires. (Missing (2) Tires and Rim) (TUSCARORA)



**BROWN LENOX 42"x32"**

**1996 TESAB Model RK623 Portable Impact Crusher**, s/n 04231099, powered by Cat 3306 diesel engine with Twin Disc torque converter, equipped with 1996 model RK623 rotary crusher, s/n 231, 12'x6' dump hopper, 30"x25" crusher feed conveyor, 24"x30" discharge conveyor, mounted on tandem axle carrier, hydraulic opening shell, and 235/75R17.5 tires. In good condition with good tires. (TUSCARORA)



**'96 TESAB RK623**

**1989 GUNDLACH Model 2028 Roll Crusher**, s/n 4024SSHD2028R, powered by 60HP electric motor, with hydraulic adjustment. In good condition. (Mounted on Steel Supports with 30"x35" Channel Conveyor with 10HP motor – Buyer Must Load)



**'89 GUNDLACH 2028**

**1957 UNIVERSAL Model 2036WRB, 20"x36" Jaw Crusher**, s/n 128X33, powered by 50HP electric motor. In good condition with very good dies. (Mounted on Steel Supports with 30"x35" Channel Conveyor with 10HP motor – Buyer Must Load)

**AUSTIN WESTERN 36"x18" Portable Jaw Crusher**, s/n K1538, powered by 75HP electric motor, equipped with 24"x30" discharge belt, mounted on single axle carrier. In fair to poor condition.

## SCREENS AND GRIZZLIES

**2012 TRIO Model TTH16202F, 6'x20' Double Deck Vibrating Screen**, s/n 6202031, equipped with springs, guard, and motor. In excellent condition. (No Fabric)

**1980 DEISTER 5'x16' Skid Mounted Triple Deck Vibrating Wet Screen**, s/n 1280, with skid mounted support structure and water manifold. In good condition.

**LUDOWICI 8'x16' Double Deck Horizontal Vibrating Screen**, s/n LH-2-816-35697, equipped with twin QH400 drives, lo head, and stainless fabric. In good condition.

**SIMPLICITY 4'x14' Double Deck Portable Vibrating Incline Screen**, s/n Unknown, powered by approx. 30HP electric motor, equipped with 11R24.5 tires. In good condition with fair to poor tires. (TUSCARORA)

**1980 HEWITT ROBBINS 5'x14' Double Deck Vibrating Incline Screen**, s/n VSG0452301, powered by 10HP electric motor. In good condition. (Mounted on Structural Steel Tower, with receiving hopper, 36"x48" discharge conveyor (15HP), 36"x36" feed conveyor (10HP) with picking station – Buyer Must Load)

**1991 (4) TABOR 10'-16' Lo Head Single Deck Vibrating Screens**, s/n 3312-3313-3314-3315, equipped with dual mechanisms. In good condition.

**TABOR 8'x16' Double Deck Vibrating Screen**, s/n 1481. In fair condition.

**(2) TABOR 8'x16' Vibrating Screens**, s/n's 3579 and 3575. In fair condition.

**TABOR 6'x16' Single Deck Vibrating Screen**, s/n 2214. In poor condition.

**TABOR 6'x16' Vibrating Screen**, s/n 1507. In poor condition.

**(2) CONN-WELD Model F7138, 48"x72" Sieve Bend Screens**, s/n's 31730 and 31729, equipped with (2) model 7148 distribution boxes, s/n's 31729 and 31730, and stainless steel screens. In very good condition. (Unused)

**CONN-WELD 6'x4' Bend Sieve Screen**

**(2) 11-1/2'x19'x12'H Grizzlies (KASKA)**

**(1) 11-1/2'x15-1/2'x11'H Grizzly (TUSCARORA)**

**Custom Made 15'Lx10'Wx10'H Grizzly**, with 8" bar spacing

**(2) INVICTA Screen Motions**. In fair condition.



**'12 TRIO SCREEN AND FEEDER**



**'80 DEISTER 5'X6' WET**



**LUDOWICI 8'X16"**

## SERVICE AND UTILITY TRUCKS

**2005 STERLING Single Axle Service Truck**, powered by Mercedes 6 cylinder diesel engine and automatic transmission, equipped with 11' open service body, 22" work bumper with vise, Stellar SHD60 hydraulic air compressor, Miller Bobcat 225 welder generator, powered by Kohler 2 cylinder gas engine, Stellar 10620 hydraulic service boom, 10,000# capacity, 200 gallon 2 compartment product tank with pneumatic pumps and self-winding hose reels. (2) hydraulic extending outriggers, aluminum wheels, heated mirrors, cruise control, air conditioning, and 295/75R22.5 tires. In good condition with good tires.



**'05 FORD F-550**

self-winding hose reel, (2) hydraulic extending outriggers, (2) manual stabilizers, tow package, running boards, air conditioning, and 225/70R19.5 tires. In good condition with good tires.

**2005 FORD Model F-550XL Super Duty Service Truck**, powered by Cummins 6 cylinder diesel engine and 6 speed transmission, equipped with 11' open service body with 19" work bumper, IMTDS 435 hydraulic air compressor, Miller Trailblazer 302, welder generator, s/n MC430267R, powered by Kubota 3 cylinder diesel engine, IMT 3820-2H hydraulic service boom, 100 gallon fuel tank with electric pump, oxy/act torch set with

self-winding hose reel, (2) hydraulic extending outriggers, (2) manual stabilizers, tow package, running boards, air conditioning, and 225/70R19.5 tires. In good condition with good tires.

**2012 RAM Model 4500 HD Utility Truck**, powered by Cummins 6.7 liter diesel engine and automatic transmission, equipped with 11' open service body, IR 2 stage gas powered air compressor, 100 gallon fuel tank with electric pump, self-winding air hose reel, running boards, tow package, power windows, locks, mirrors and seats, cruise control, air conditioning, and 225/70R19.5 tires. In good condition with good tires.



**'12 RAM 4500 HD**

**1999 GMC Model 3500HD Service Truck**, powered by 6.5 liter diesel engine and automatic transmission, equipped with 11' open utility body, 100 gallon fuel tank with electric pump, self winding air hose reel, pintle hitch with electric, dual fuel tanks, air conditioning, and 225/70R19.5 tires. In good condition with good tires.

**2004 CHEVY Model 3500, 4x4 Utility Truck**, powered by Vortec 6 liter gas engine and automatic transmission, equipped with 9' open utility body, 100 gallon fuel tank with electric pump, air conditioning, and 215/85R16 tires. In good condition with good tires.

## HOPPERS, FEEDERS, AND CONVEYORS

**Custom Built 10yd3 Feed Hopper**, equipped with 8'x15" hopper and 30"x25" hydraulic belt feeder, skid mounted. In good condition.

**8'x16' Dump Bin with 42"x60' Reciprocating Plate Feeder and Grizzly**. (Buyer Must Load)

**EAGLE 12'x17' Feed Hopper**, equipped with 38" reciprocating plate feeder. In fair condition.

**2012 TRIO Model TF5820P Vibrating Feeder**, s/n TF5820-025, powered by 50HP electric motor, equipped with suspension. In excellent condition.

**30"x120"x36" Truss Portable Radial Stacking Conveyor**, powered by approx. 25HP electric motor with gear reducer, equipped with 11R22.5 tires. In good condition with fair to good tires. (Buyer Must Load)

**PRODUCER SUPPLY 36"x64" Truss Screen Feed Portable Conveyor**, powered by 20HP electric motor with gear reducer, equipped with 10.00x20 tires. In good condition with fair to poor tires. (Buyer Must Load)

**54"x200' Lattice Conveyor**, equipped with catwalk and 48" rolled belt. In fair condition.



**10 CUBIC YARD HOPPER**



**30"X120' STACKER**

## TRUCK TRACTOR AND DUMP TRAILER

**1986 MACK Model R686ST Tandem Axle Truck Tractor**, powered by Mack 300 diesel engine and 6 speed lo-hole transmission, equipped with wetline, 188" wheelbase, camel back suspension, engine brake, and 11R24.5 tires. In good condition with good tires.

**1981 COBRA 34' Tandem Axle Aluminum Dump Trailer**, equipped with spring suspension, chute, electric tarp, and 11R24.5 tires. In good condition with good tires.



**'81 COBRA 34'**



**DUMP TRUCKS AND TAG-A-LONG TRAILER**

**2000 MACK Model DM690S Tandem Axle Dump Truck**, powered by Mack EM7-300 diesel engine and Maxitorque T2080 8 speed transmission, equipped with camel back suspension, 44,000# rears, Summit 17' steel dump body, Jacobs 2 stage engine brake, cruise control, and 11R24.5 tires. In good condition with good tires.



**'00 MACK DM690S**

**1992 MACK Model DM690S Tandem Axle Dump Truck**, powered by Mack EM7-275 diesel engine and Maxitorque T2070 7 speed transmission, equipped with beam suspension, 44,000# rears, Summit 16' steel dump body, and 12R24.5 tires. In good condition with good tires.



**'92 MACK DM690S**

**1989 MACK Model DM690SX Tandem Axle Dump Truck**, powered by Mack EM6-275 diesel engine and 9 speed transmission, equipped with beam suspension, 55,000# rears, 16' steel dump body, and 11R24.5 tires. In fair condition with good tires.

**1988 MACK Model DM685SX Tandem Axle Dump Truck**, powered by Mack EM6-237, 6 cylinder diesel engine and 6 speed lo-hole transmission, equipped with beam suspension, 55,000# rears, 14' steel dump body, and 12R14.5 tires. In fair condition with fair to good tires.

**1987 MACK Model DM686SX Tandem Axle Dump Truck**, powered by Mack EM6-285 diesel engine and 6 speed lo-hole transmission, equipped with camel back suspension, 55,000# rears, Summit 16' steel dump body, and 11R24.5 tires. In fair condition with fair to good tires.

**2010 PEQUEA Model 1018 Tag-A-Long Trailer**, equipped with 9,999# GVWR, spring suspension, 96" deck width, 100" overall width, 16' level deck, 4' beaver tail, and H78x15 tires. In good condition with good tires.

**PICKUPS, SEDAN, AND SNOW PLOWS**

**2008 GMC Model 1500 Sierra, 4x4 Quad Cab Pickup Truck**, powered by Vortec 5.3 liter diesel engine and automatic transmission, equipped with 7' bed, side boxes, tow package, running boards, power windows, locks, mirrors, and seats, cruise control, air conditioning, and 265/70R17 tires. In good condition with good tires.



**'08 GMC 1500 4X4**

**2004 CHEVY Model 2500HD Silverado, 4x4 Pickup Truck**, powered by Vortec 6 liter gas engine and automatic transmission, equipped with 8' bed, tow package, air conditioning, plow frame (no controls) and 245/75R16 tires. In good condition with good tires.

**2003 CHEVY Model 1500 Silverado, 4x4 Pickup Truck**, powered by Vortec 4.9 liter gas engine and automatic transmission, equipped with 8' bed, bed liner, MEYER Model ST-7.5, 7'6" Snowplow, s/n 00168309163, with quick disconnect frame with lights, power angle, tow package, running boards, cruise control, air conditioning, and 245/75R16 tires. In good condition with very good tires.

**2000 CHEVY Model 2500, 4x4 Silverado Pickup Truck**, powered by Vortec 6 liter gas engine and automatic transmission, equipped with 8' bed with liner, Western Pro Plus 8' hydraulic snow plow with ultra-mount, Western 500 electric hitch mount spreader, tow package, and 245/75R16 tires. In good condition with good tires. (Tailgate Rust, Bed Damage)

**2000 GMC Model 1500 LS Silverado, 4x4 Pickup Truck**, powered by Vortec 5.3 liter gas engine and automatic transmission, equipped with 9' bed, tow package, power windows, locks and mirrors, cruise control, air conditioning, and 265/75R16 tires. In good condition with good tires. (Some Damage to Hood)

**2010 FORD Model Focus SE, 4 Door Sedan**, powered by 4 cylinder gas engine and automatic transmission, equipped with power locks and mirrors, cruise control, air conditioning, and 195/60R15 tires. In good condition with good tires.



**'10 FORD FOCUS**

**AIR FLO 7 1/2' Stainless Steel Snowplow**, equipped with power angle and quick disconnect frame with lights. In good condition.  
**MEYERS Salt Spreader**, s/n 16004. In good condition.

**WATER, FLATBED, DIGGER, AND MISCELLANEOUS TRUCKS**

**MACK Model R686ST Tandem Axle Water Truck**, powered by Mack 6 cylinder diesel engine and 6 speed lo-hole transmission, equipped with 49,600# GVWR, 38,000# rear and 11,660# front axle, approximately 10,000 gallon steel water tank, PTO pump, 2 front and 2 rear air articulated spray heads, Dynatard engine brake, and 11R24.5 tires. In fair condition with fair to good tires. (Twisted Frame) (No Title) (TUSCARORA)

**1980 INTERNATIONAL Model 2574 Single Axle Water Truck**, powered by Detroit 6V-92 diesel engine and 5 speed with 2 speed rear transmission, equipped with 29,900# GVWR, 19,040# rear and 10,860# front axle, spring suspension, approximately 4,000 gallon steel water body, Honda WTX30X gas trash pump, gravity load, (2) rear air actuated spray heads, and 11R22.5 tires. In fair condition with good tires.

**MACK Model R686ST Tandem Axle Water Truck**, powered by Mack 6 cylinder diesel engine and 6 speed lo-hole transmission, equipped with 48,500# GVWR, 38,000# rears and 10,500# front axle, approximately 5,000 gallon steel water body, (3) rear air actuated spray heads, Dynatard engine brake, and 10,000x22 tires. In fair to good condition with fair tires. (Pump Missing)

**MACK Model RD686ST Tandem Axle Flatbed Truck**, powered by Mack 300, 6 cylinder diesel engine and 6 speed lo-hole transmission, equipped with camel back suspension, 11' steel flatbed, approximately 500 gallon fuel tank with electric pump, and 10.00x22 tires. In fair condition with good tires.

**1991 GMC Top Kick Single Axle Digger Derrick**, powered by Cat 6 cylinder diesel engine and automatic transmission, equipped with 13,200# GVWR, 23,000# rear and 13,200# front axle, spring suspension, Texoma model TX350T, 28,039# hydraulic digger derrick, s/n 1056984-1056990 with 3 section hydraulic boom, 18" auger, pole claws with tilt and rider console, Miller model WD5 diesel powered welder, hose reel with auxiliary hydraulics hose, 15' line body, 4 hydraulic outriggers, and 11R22.5 tires. In fair to good condition with good tires. (TUSCARORA)

**1998 FORD Model F-800 Single Axle Van Body Truck**, powered by Cummins 6 cylinder diesel engine and automatic transmission, equipped with 16'6" aluminum body with electric lift gate and roll up rear door, and 9R22.5 tires. In good condition with good tires.

**1998 FORD Model F-800 Cab & Chassis**, equipped with 2,000# electric lift gate and 9R22.5 tires. In fair condition with good tires. (No Engine, No Transmission, & No Front Tires)

**BELT MAGNET AND MAGNETIC SEPARATORS**

**MAGNET PRODUCERS, INC. 36"x60" Belt Magnet**, s/n 2770, powered by electric motor. In good condition •

(2) **DINGS 36"x96" Magnetic Separators**. In fair condition •

(4) **DINGS 36"x96" Magnetic Separators**, powered by 3HP



**36"X60" BELT MAGNET**



**DINGS 30"X96"**

electric motors. In fair condition • **DINGS 30"x96" Magnetic Separator**, s/n K10602 • **DINGS 30"x96" Magnetic Separator**. In good condition • **ERIEZ 30"x72" Magnetic Separator**, s/n 60938. In fair condition • **DINGS 30"x48" Magnetic Separator**, s/n K10602. In fair condition • (4) **DINGS 30"x48" Magnetic Separators**, s/n's 990373, 1-88861, and (2) unknown, (2) with motors and frames. In fair condition.

**CYCLONES**

(2) **R&S 28" Heavy Media Cyclones**, with boxes (Unused)

• (2) **KREBS Model D1SL, 15" Heavy Media Cyclones** •

(10) **KREBS Model D10L-137, 10" Classifying Cyclones**, s/n 47881 and Unknown • (3) **KREBS Model D15LB-S184 Cyclones**, s/n 0947311, **KREBS D15LB-S-184 Cyclone**, s/n 43614, **KREBS D20B-S-298 Cyclone**, s/n 37843. In good condition • **KREBS Model D20BS171 Cyclone**, s/n 103156U • (2) Large Cyclones • **KREBS**



**KREBS CYCLONES**

Model M679-MCN Radial Manifold System, s/n NOS (63916-639191). In fair condition

**ELECTRIC MOTORS AND ELECTRIC COMPONENTS**

(2) Electric/Hydraulic Power Packs • **US 10HP** • **FARADAY 1HP** • **RELIANCE**

**10HP** • **MARATHON 3HP** • **LOUIS ALLIS 10HP** • **SIEMENS ALLIS 20HP**

• **WESTINGHOUSE 25HP** • **MITSUBISHI 15HP** • **GE 25HP** • **US 10HP** •

**LEESON 50HP** • **RELIANCE 15HP** • **LINCOLN 30HP** • **MARATHON 10HP**

• Miscellaneous Electric Motors • (4) **WORLDWIDE 10HP** • **LEESON 10HP** •

**WORLDWIDE 15HP** • **CROWN 20HP** • **WORLDWIDE 20HP** • **LEESON 75HP**

• **GE 40HP** • **TOSHIBA 40HP** • **TOSHIBA 30HP** • **PLUS MORE!**

**SQUARE D (17) Unused Bucket Model 6, 600 AMP Motor Control Center**