



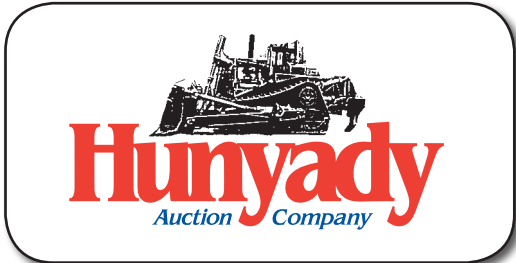
'07 CAT CS-563E



'98 JD 624H AND '02 JD 544H



'02 CAT 325CL



1440 COWPATH RD. • HATFIELD, PA 19440
215/361-9099 • Fax: 215/361-9212
www.hunyady.com

PRE-SORTED
FIRST CLASS MAIL
US POSTAGE
PAID
HAVERTOWN, PA
PERMIT #45



ABSOLUTE AUCTION

COMPLETE LIQUIDATION

**Binghamton,
New York**

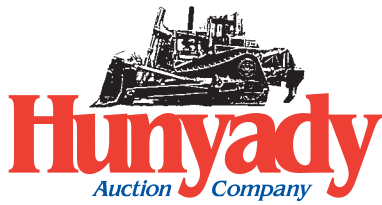
**Ben Daniels
Construction
Equipment, Inc.**



'04 CAT D7R XR II

THURSDAY, OCTOBER 10, 2013 - 10:00 AM

NEVER A BUYER'S PREMIUM!



**Ben Daniels
Construction
Equipment, Inc.**

Bid Live Online! proxibid®
www.proxibid.com/hunyady

Please visit our website at
www.hunyady.com

Notice: Due to unforeseen, hopefully temporary, illness, Mr. Ben Daniels has decided to liquidate all assets from his construction equipment company. All equipment in the auction is owned by Ben Daniels Construction Equipment, Inc., and will positively sell to the highest bidder regardless of price, with the exception of the John Deere 744K which will be offered "subject to owner's immediate confirmation" Never A Buyers Premium!

Location: The auction will be held at Ben Daniels Construction Equipment yard and office facility located at 63 State Road 369, Binghamton, New York, 13904

Sale Site Directions: FROM INTERSTATE 81 IN BINGHAMTON, NY: Take Interstate 88 East approximately (4) miles to Exit 3 (Port Crane/Route 369) and proceed to traffic light. Turn right onto Route 369 and continue (0.1) miles to sale site on right.

TRAVELING WEST ON INTERSTATE 88: Take Exit 3 (Port Crane/Route 369) Proceed to stop sign and turn left onto Route 369 and continue (0.3) miles to sale site on right.

Online Bidding: Live internet bidding will be provided by Proxibid. Proxibid will require a 2.5% internet provider service fee (capped at \$750) that will be charged for each item purchased online. All interested internet bidders are required to register with Proxibid 24 hours prior to the auction at www.proxibid.com/hunyady or call 877-505-7770

Terms: Payment in full is required on sale day by cash, certified funds, or check with a bank letter of guarantee. Sample letter of guarantee: "We hereby guarantee the payment of our customer _____ written on his account up to _____ dollars for purchases at your auction sale on October 10, 2013." All guaranteed checks should be made payable to Hunyady Auction Co.

Sales Tax: Sales Tax will be collected on all items at the rate of 8.00%. In accordance with New York State Sales Tax Regulation Section 525.2, we are required to collect sales tax as it applies to the "Point of Possession" (which is 8.00%, Broome County). Sales tax will be removed only if valid exemption form is presented at time of transaction.

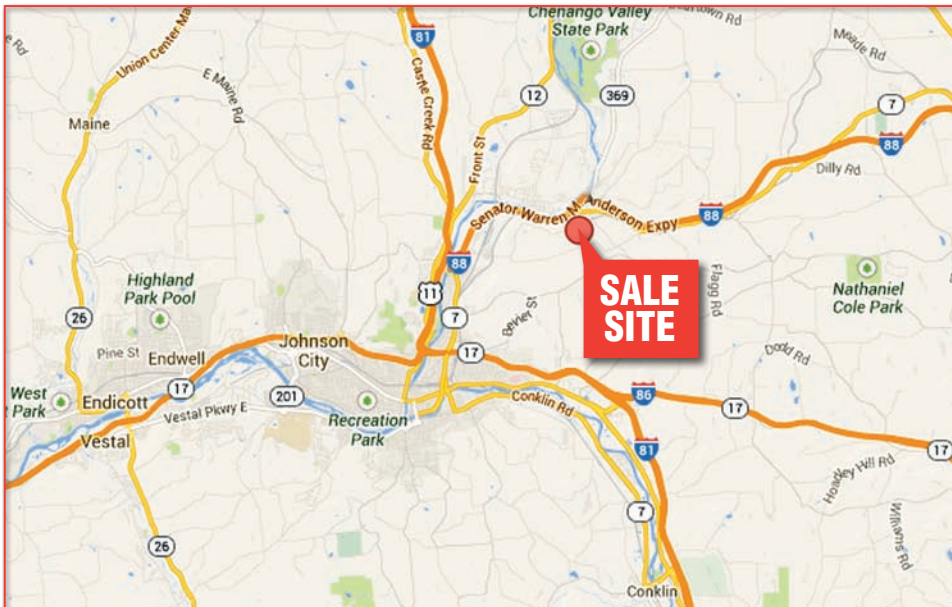
Financing: Financing is available, please contact Susan (215) 361-9099 at the auction company for details.

Inspection: Items will be available for inspection Monday, October 7th thru Wednesday, October 9th, from 8:00AM to 4:00PM, or sale day morning from 8:00AM until 10:00AM

Removal: After complete payment, all sale items may be removed on sale day as long as the removal activity is not disruptive to the sale and only until 5:00PM. Items may also be removed Friday, October 11th and Monday, October 14th and Tuesday, October 15th, 8:00AM to 4:00PM. All items must be removed no later than Tuesday, October 15th, 2013 at 4:00PM.

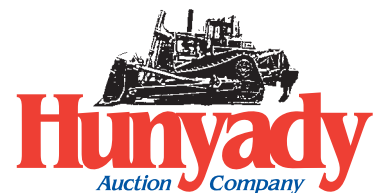
Airport Information: Commercial and Private aircraft are accepted at the Motel Information: Comfort Inn, 1000 Front Street, Binghamton, NY 13905, (607) 724-3297 • Fairfield Inn Binghamton, 864 Front Street, Binghamton, NY 13905, (607) 651-1000 • Howard Johnson Binghamton, 1156 Front Street, Binghamton, NY 13905, (607) 722-5353

Sale Site Phone: (267) 446-3808 • Sale Site Fax: (888) 859-8958



**Ben Daniels
Construction
Equipment, Inc.**

Bid Live Online! proxibid®
www.proxibid.com/hunyady



1440 COWPATH RD. • HATFIELD, PA 19440
215/361-9099 • Fax: 215/361-9212
www.hunyady.com

CRAWLER TRACTORS



04 CAT D7R XR II

2004 CATERPILLAR Model D7R XR Series II Crawler Tractor, s/n AGN00761, powered by Cat 3176C diesel engine and powershift transmission, equipped with semi-U blade with right tilt, draw bar, ROPS over enclosed cab, air conditioning, and 24" SBG pads. In good condition with good undercarriage. (5,664 Hours)



01 CAT D7R LGP

2001 CATERPILLAR Model D7R LGP Crawler Tractor, s/n 3DN00377, equipped with straight blade with tilt, enclosed ROPS cab, air conditioning, landfill package, and 36" SBG pads. (14,079 Hours) (Sold In Absentia – Located In Mulberry, Florida)

TRACTOR LOADER BACKHOE AND FORK ATTACHMENT



2000 JCB Model 212S Series II, 4x4 Tractor Loader Backhoe, s/n 0488999, powered by diesel engine and shuttle transmission, equipped with general purpose loader bucket with bolt-on cutting edge, front hydraulic quick coupler, front and rear auxiliary hydraulics, 18" digging bucket, sliding backhoe, enclosed ROPS cab, and 12.5/80-18 tires. In good condition with very good tires. (4,698 Hours)

42" Fork Attachment (JCB 212S)

00 JCB 212S II (FORKS SOLD SEPARATELY)

VIBRATORY COMPACTORS



07 CAT CS-563E

2007 CATERPILLAR Model CS-563E Vibratory Compactor, s/n CNG01985, powered by Cat 3165 diesel engine and hydrostatic transmission, equipped with 84" smooth drum, enclosed ROPS cab, air conditioning, drum drive, drum cleaner, set up for laser control, and 23.1-26 tires. In good condition with good tires. (3,373 Hours)



99 IR SD-110D

1999 INGERSOLL RAND Model SD-110D Pro Pac Vibratory Compactor, s/n 157096, powered by Cummins 5.9L diesel engine and hydrostatic transmission, equipped with 84" smooth drum, ROPS canopy, drum drive, drum cleaner, and 23.1-26 tires. In good condition with good tires. (5,336 Hours)

HYDRAULIC EXCAVATORS AND ATTACHMENTS



02 CAT 325CL

2002 CATERPILLAR Model 325CL Hydraulic Excavator, s/n BFE00164, powered by Cat diesel engine and hydraulic drive, equipped with 10'6" dipper stick, hydraulic coupler, Cat 42" digging bucket, enclosed ROPS cab, air conditioning, 15'2" crawlers, and 32.5" TBG pads. In good condition with fair to good undercarriage. (10,864 Hours)



05 HITACHI ZX270LC

2005 HITACHI Model ZX270LC Hydraulic Excavator, s/n ARV810175, powered by Isuzu 6 cylinder diesel engine and hydraulic drive, equipped with 12' dipper stick, JRB coupler, auxiliary hydraulics, JRB 72" clean-up bucket, hydraulic wrist-o-twist, enclosed ROPS cab, air conditioning, 16'5" crawlers, and 31.5" TBG pads. In good condition with good undercarriage. (10,844 Hours)
CF 48" Digging Bucket (Hitachi ZX270LC)



04 CASE CX290

2004 CASE Model CX290 Hydraulic Excavator, s/n DAC291215, powered by Case 6TAA-5904 diesel engine and hydraulic drive, equipped with 10'6" dipper stick, CP 54" digging bucket, enclosed ROPS cab, air conditioning, 16' crawlers, and 31.5" TBG pads. In good condition with good undercarriage. (6,965 Hours)



01 KOMATSU PW170ES-6K

2001 KOMATSU Model PW170ES-6K Rubber Tired Excavator, s/n K32268, powered by diesel engine and hydraulic drive, equipped with 9'6" dipper stick, Wain Roy 60" clean-up bucket, hydraulic wrist-o-twist with quick coupler, hydraulic thumb attachment, (4) hydraulic outriggers, enclosed ROPS cab, and 18-19.5 tires. In good condition with good tires. (5,100 Hours)

2003 KOMATSU PC160LC-7 Hydraulic Excavator, s/n 10087,

powered by Komatsu 4 cylinder diesel engine and hydraulic drive, equipped with 8' dipper stick, auxiliary hydraulics, Geith 30" digging bucket, thumb bracket, enclosed ROPS cab, air conditioning, 12'10" crawlers, and 23.5" TBG pads. In good condition with fair undercarriage. (10,400 Hours)



03 KOMATSU PC160LC-7



02 KOMATSU PC130-6K

2002 KOMATSU Model PC130-6K Hydraulic Excavator, s/n K31395, powered by Komatsu S4D102E-1 diesel engine and hydraulic drive, 8' dipper stick, JRB hydraulic coupler, auxiliary hydraulics, digging bucket, enclosed ROPS cab, 11'5" crawlers, and 23.5" TBG pads. In good condition with good undercarriage. (10,300 Hours)

2009 JOHN DEERE Model 50D Mini Hydraulic Excavator, s/n 275024,

powered by Yanmar 4 cylinder diesel engine and hydraulic drive, equipped with 5'6" dipper stick, manual coupler, auxiliary hydraulics, 24" digging bucket, 79" backfill blade, enclosed ROPS cab, air conditioning, and 16"x8" rubber tracks. In good condition with good undercarriage. (1,357 Hours)



09 JOHN DEERE 50D

RUBBER TIRED LOADERS AND ATTACHMENTS



'11 JOHN DEERE 744K (OFFERED SUBJECT TO OWNERS IMMEDIATE CONFIRMATION)

2011 JOHN DEERE Model 744K Rubber Tired Loader, s/n 1DW744KXTBE636710, powered by John Deere diesel engine and powershift transmission, equipped with 5.75 cubic yard general purpose loader bucket with bolt-on cutting edge, bucket scales, enclosed ROPS cab, air conditioning, and 26.5R25 tires. (Sold Subject To Owner's Immediate Confirmation)



'98 JOHN DEERE 624H

1998 JOHN DEERE Model 624H Rubber Tired Loader, s/n 565701, powered by John Deere diesel engine and powershift transmission, equipped with general purpose loader bucket with bolt-on cutting edge, and enclosed ROPS cab. In good condition with good tires. (5,551 Hours)



'02 JOHN DEERE 544H

2002 JOHN DEERE Model 544H Rubber Tired Loader, s/n 584390, powered by John Deere 6068 diesel engine and powershift transmission, equipped with general purpose loader bucket with bolt-on cutting edge, enclosed ROPS cab, and 20.5-25 tires. In good condition with good tires. (10,503 Hours)



'96 CAT IT14G

1996 CATERPILLAR Model IT14G Integrated Tool Carrier, s/n 1WN00348, powered by Cat 3054 diesel engine and powershift transmission, equipped with general purpose loader bucket with bolt-on cutting edge, hydraulic coupler, auxiliary hydraulics, enclosed ROPS cab, and 17.5R25 tires. In good condition with fair to good tires. (11,627 Hours)

60" Fork Attachment (Cat IT14G)



'95 CAT 928F

1995 CATERPILLAR Model 928F Rubber Tired Loader, s/n 2XL01587, powered by Cat diesel engine and powershift transmission, equipped with general purpose loader bucket with bolt-on cutting edge, enclosed ROPS cab, and 17.5R25 tires. In fair condition with fair tires. (26,949 Hours)



'06 JCB 407ZX

2006 JCB Model 407 ZX Rubber Tired Loader, s/n 61136508, powered by Perkins 4 cylinder diesel engine and 2 speed hydrostatic transmission, equipped with 1.0 cubic yard general purpose loader bucket with bolt-on cutting edge, hydraulic coupler, enclosed ROPS cab, and 335/80R18 tires. In very good condition with very good tires. (2,984 Hours)

48" Fork Attachment (JCB 407 ZX)

ROUGH TERRAIN FORKLIFT



'05 MUSTANG 8,000#

2005 MUSTANG Model 844, 8,000# Telescopic Rough Terrain Forklift, s/n 844JW0890127, powered by John Deere 4045 diesel engine and powershift transmission, equipped with 44' lift height, 3-section hydraulic boom, (2) 48" standard forks, (4) 48" block tires, 96" general purpose loader bucket, hydraulic fork rotation, (2) hydraulic outriggers, coupler, enclosed ROPS cab, and 13.00-24 foam filled tires. In good condition with fair tires. (1,992 Hours)

BOAT



SPECTRUM 15' WITH TRAILER

SPECTRUM Model 1704, 16' Aluminum Boat, Hull # BFFA65NBH889, powered by US Marine 50HP gas engine, equipped with Escort standard axle trailer.

FIREWOOD PROCESSOR AND PORTABLE CHIPPER



'08 MULTITEK FP1610E2

2008 MULTITEK Model FP1610E2 Firewood Processor, s/n 5180608, powered by Robin 2 cylinder 25HP gas engine, equipped with 7' live deck (10' max log length, 16" max log diameter), 16" chainsaw, 24" length splitting capacity, 12"x11' folding discharge conveyor, and 175/80D13 tires. In good to very good condition with good tires.

BANDIT Model 90 Portable Chipper, s/n 005308, powered by 4 cylinder diesel engine, equipped with rotating chute. In good condition with good tires. (Not Running)

SNOW PUSHERS & PLOWS

Rubber Tired Loaders: (2) Unused PRO-TECH Model SP14L, 14' Snow Pushers, s/n 40529, s/n 40517 • **Unused PRO-TECH Model SP12L, 12' Snow Pusher**, s/n 40659

Tractor Loader Backhoes: Unused PRO-TECH Model SP12B, 12' Snow Pusher, s/n 40710

Skid Steer Loaders: (2) Unused PRO-TECH Model SP10S, 10' Snow Pushers, s/n 40702, s/n 40734 • **Unused PRO-TECH Model SP08S, 8' Snow Pusher**, s/n 41197

Compact Loaders: Unused PRO-TECH Model SP06C, 6' Snow Pusher, s/n 38912

11' Hydraulic Angle Snow Plow Attachment, with JRB quick coupler



(7) UNUSED PRO-TECH SNOW PUSHERS

EQUIPMENT ATTACHMENTS & COMPONENTS

CATERPILLAR 60" Fork Attachment (Cat 950E/950F/950G)

- 44" Hydraulic Log Grapple Fork Attachment • JRB Hydraulic Side Dump Bucket with bolt-on cutting edge (Komatsu WA380)
- General Purpose Loader Bucket with bolt-on cutting edge (JD444/544J) • **BALDERSON** General Purpose Loader Bucket (Cat 928) • JRB General Purpose Loader Bucket • JRB Hydraulic Quick Disconnect (Cat 938G) • 60" Digging Bucket • 52" Digging Bucket • **GEITH** 48" Digging Bucket • **BALDERSON** 36" Digging Bucket • **ESCO** 30" Digging Bucket • **ESCO** 24" Digging Bucket • **CATERPILLAR** 12" Digging Bucket (Cat D Model Tractor Loader Backhoes) • (1 Set) Unused **CATERPILLAR** 23.5" SBG Track Group (Cat D6/963) • (4) 14-17.5 Tires with rims • (17) Used Loader Tires



EQUIPMENT ATTACHMENTS AND COMPONENTS