



13 DOOSAN DL420-3



12 CAT D5KXL



(3) OF (5) TANDEM ROLLERS



ANNIVERSARY

1990 - 2015

1440 COWPATH RD. • HATFIELD, PA 19440
215/361-9099 • Fax: 215/361-9212

PRE-SORTED
FIRST CLASS MAIL
US POSTAGE
PAID
HAVERTOWN, PA
PERMIT #45



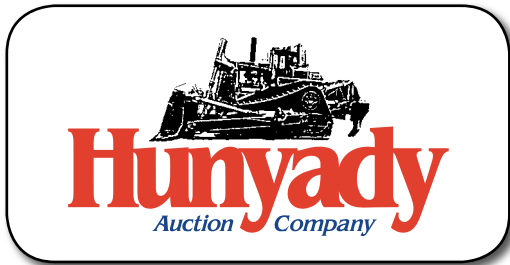
ABSOLUTE AUCTION **DIVISION LIQUIDATION**



12 KOBELCO SK235SRLC-2
AND 06 CASE CX225SR

WEDNESDAY,
APRIL 15, 2015 - 9:00AM

Greensburg,
Pennsylvania



Notice: Donegal Construction Corporation has decided to discontinue its Bridge, Concrete, Drainage and Paving operations in order to concentrate on its Milling operations. All equipment related to the above discontinued operations will sell to the highest bidder, regardless of price. Donegal will continue to offer the finest milling/profiling services for its valued customers as the leading milling operation in the Eastern United States.

Location: The auction will be held at Donegal's shop and yard facility located at 1235 Marguerite Lake Road, Greensburg, PA 15601

Sale Site Directions: FROM GREENSBURG: Proceed on US Route 30 East, approximately (5) miles to traffic light at Sand Hill Road and turn right. Proceed (2.9) miles (Sand Hill Road Becomes Marguerite Lake Road) to sale site on right.

FROM LATROBE: Proceed on US Route 30 West approximately (2.3) miles to traffic light at Sand Hill Road and turn left. Proceed (2.9) miles (Sand Hill Road Becomes Marguerite Lake Road) to sale site on right.

Terms: Payment in full is required on sale day by cash, certified funds, or check with a bank letter of guarantee. Sample letter of guarantee: "We hereby guarantee the payment of our customer _____ written on his account up to _____ dollars for purchases at your auction sale on April 15, 2015" All guaranteed checks should be made payable to Hunyady Auction Co.

Sales Tax: Since this contractor is selling items not normally sold in the course of his business, the Commonwealth of Pennsylvania considers this an isolated sale and does not require the auction company to collect sales tax. There are however (2) items being sold on behalf of lending institutions, these items will be subject to Pennsylvania sales tax at a rate of 6% and are so noted.

Financing: Financing is available, please contact Susan (215) 361-9099 at the auction company for details.

Inspection: Items will be available for inspection beginning one week prior to the auction from 8:00AM to 4:00PM, or sale day morning beginning at 7:00AM. The site will be closed Saturday and Sunday, April 11th and 12th

Removal: After complete payment, all sale items may be removed on sale day as long as the removal activity is not disruptive to the sale and only until 5:00PM. Items may also be removed Thursday and Friday, April 16th and 17th and Monday thru Thursday, April 20th to 23rd from 8:00AM until 4:00PM. All items must be removed no later than Thursday, April 23, 2015 at 4:00PM

Airport Information: The area is serviced commercially and privately through Arnold Palmer Regional Airport. Rental cars are available.

Motel Information: Wingate by Wyndham, (724) 539-0400; 3970 US Route 30, Latrobe, PA 15650 • Spring Hill Suites, (724) 537-7800; 115 Arnold Palmer Drive, Latrobe, PA 15650

Sale Site Phone: (267) 446-3808 (Beginning March 30, 2015) • Sale Site Fax: (888) 859-8958

MOTORCYCLES



2002 HARLEY DAVIDSON Springer Soft Tail Motorcycle, 1450CC gas and 5 speed trans. In good condition with good tires. (Odometer Reads 3,200 Miles)



'97 HARLEY ULTRA CLASSIC

'02 HARLEY SPRINGER

1997 HARLEY DAVIDSON Ultra Classic Motorcycle, 1340CC gas and 5 speed trans. In good condition with good tires. (Odometer Reads 20,178 Miles)

DOWEL DRILL, MULCHER, AND CHIPPER

E-Z DRILL 210-3SRA, 3-Gang Pneumatic Dowel Drill, s/n P2460 • **REINCO** Portable Mulcher, Ford 6 cylinder gas and Twin Disc PTO, rotating chute, T/A trailer • **ASPLUNDH** Whisper Portable Chipper, s/n JEY20691, Ford V-8 gas, 16" cutter drum

PUMPS AND AIR COMPRESSORS

GORMAN RUPP PA6C60-4045D, 6" Dry Prime Portable Centrifugal Pump, s/n 1288182, JD 4045DF diesel • **1995 HOMELITE** HTP33, 4" Portable Trash Pump • **INGERSOLL RAND** P185, 185CFM Portable Air Compressor, s/n 331070UGM221, JD diesel • **SULLAIR** 375DPQ-JD, 375CFM Portable Air Compressor, s/n 004-133113, JD diesel



1235 Marguerite Lake Road, Greensburg, PA 15601

HYDRAULIC EXCAVATORS



2012 KOBELCO SK235SRLC-2, s/n YU06-03206, Hino 4 cylinder diesel and hydraulic drive, 9'6" dipper stick, Geith hydraulic coupler, plumbed, CP 48" digging bucket, Intelligent total control system, EROPS with heat and ac, and 31.5" TBG pads. In very good condition with very good undercarriage. (Meter Reads 1,391 Hours) (Purchased New)

'12 KOBELCO SK235SRLC-2

2006 CASE CX225SR, s/n DAC251341, Isuzu 6 cylinder diesel and hydraulic drive, 10' dipper stick, JRB hydraulic coupler, plumbed, 48" digging bucket, EROPS with heat and ac, and 31.5" TBG pads. In good condition with good undercarriage. (Meter Reads 04,326 Hours) (Bottom Glass Missing) (Purchased New)



'06 CASE CX225SR

2007 KOMATSU PC300LC-7EO, s/n A88948, Komatsu diesel and hydraulic drive, 11'6" dipper stick, JRB hydraulic coupler, Esco 36" digging bucket, plumbed, ac, and 34" TBG pads. In good condition with good undercarriage. (Meter Reads 04,547 Hours)



'07 KOMATSU PC300LC-7EO

2004 VOLVO EC330BLC, s/n EC330V10229, Volvo 6 cylinder diesel and hydraulic drive, 10'6" dipper stick, plumbed, hydraulic quick coupler, 36" digging bucket, heat and ac, and 31.5" TBG pads. In good condition with good to very good undercarriage. (Meter Reads 11,236 Hours) (Purchased New) (Tracks, Sprockets, and Re-Shelled Idlers Less Than 500 Hours)



'04 VOLVO EC330BLC

1996 LINK-BELT 3400 Quantum, s/n E7166344, Isuzu 6 cylinder diesel and hydraulic drive, 10' dipper stick, Esco hydraulic coupler, Esco 36" digging bucket, plumbed, EROPS with heat and ac, and 31.5" TBG pads. In good condition with good undercarriage. (Meter Reads 11,960 Hours)



'96 LINK-BELT 3400Q

RUBBER TIRED EXCAVATORS



2010 HYUNDAI Robex 210W-9, s/n HHHQ602AB0000195, Cummins 6 cylinder diesel and hydraulic drive, 9'6" dipper stick, Geith hydraulic quick coupler, Geith HIELAC hydraulic wrist, plumbed, CP 60" cleanup bucket, 98" backfill blade, (2) hydraulic outriggers, rear view camera, EROPS with heat and ac, and 10.00x20 tires. In good condition with good tires. (Meter Reads 2,074 Hours) (Purchased New)

'10 HYUNDAI R210W-9

2006 CATERPILLAR M318C, s/n H2D00514, Cat diesel and hydraulic drive, 9' dipper stick, auxiliary hydraulics, Helac hydraulic wrist with hydraulic quick coupler, 60" cleanup bucket with perforated sides, hydraulic backfill blade, (2) hydraulic outriggers, pattern selector, ac, and 10.00-20 tires. In good condition with fair tires. (Meter Reads 3,825 Hours) (Purchased New)



'06 CAT M318C

MINI EXCAVATORS



2007 CASE CX50B ZTS, s/n N7TN81911, Yanmar 4 cylinder diesel and hydraulic drive, 5'1" dipper stick, auxiliary hydraulics, 24" digging bucket, 77" backfill blade, EROPS with heat and ac, and 16" rubber tracks. In good condition with fair to poor tracks. (Meter Reads 03,243 Hours) (Purchased New)

'07 CASE CX50B ZTS

2006 CASE CX50B ZTS, s/n N5TN81427, Yanmar 4 cylinder diesel and hydraulic drive, 5'1" dipper stick, auxiliary hydraulics, WB 24" digging bucket, Geith mechanical thumb, 77" backfill blade, EROPS with heat and ac, and 16" rubber tracks. In good condition with fair tracks. (Meter Reads 3,536 Hours) (Purchased New)



'06 CASE CX50B ZTS

2008 CASE CX50B ZTS, s/n N8TN82162, Yanmar 4 cylinder diesel and hydraulic drive, 5'1" dipper stick, auxiliary hydraulics, WB 12" digging bucket, Geith mechanical thumb, 77" backfill blade, ROPS canopy, and 16" rubber tracks. In good condition with fair to poor tracks. (Meter Reads 02,239 Hours) (Purchased New)



'08 CASE CX50B ZTS

EXCAVATOR ATTACHMENTS

ALLIED AR140B Hydraulic Demo Hammer, s/n 01040 (Komatsu PC300) • **RAMMER E66 Hydraulic Demo Hammer**, with stand (Seal Needs Replaced) (Link-Belt 3400) • **ATLAS COPCO MP3400 Hydraulic Demo Hammer** (Case CX50B) • **(2) OHADA Top 30 Hydraulic Demo Hammer** (Mini Excavator or Skid Steer With Adaptor Plates) • **ALLIED 28"x41" Hydraulic Plate Compactor** (Komatsu PC300) • **IHC 35"x48" Hydraulic Plate Compactor** (Komatsu PC300) • **Hydraulic Plate Compactor** (Link-Belt 3400)

Buckets: Kobelco SK235/Hyundai 210W-9/Case CX225SR: (2) 48" Slab Buckets • **ESCO 36" & 30" Digging Bucket** • **Komatsu PC300: ESCO 60" Digging Bucket** • **Link-Belt 3400: ESCO 48" Digging Bucket** • **Cat M318C: 24" Digging Bucket** • **Case CX50B: WB 36" Cleanup Bucket**, with hydraulic wrist • **GEITH 24" Digging Bucket** • **WB 18" Digging Bucket** • **WB 12" Digging Buckets** • **Gradall G-880: (1) 40" • (1) 35" • (1) 33" • (1) 14" • HELAC Hydraulic Wrist** (Hyundai 210W-9) • **(1) Pallet** Ripper Shanks and Hammer Points

CRAWLER TRACTORS AND CRAWLER LOADER



1987 CATERPILLAR D8N, s/n 9TC01471, Cat 3406 diesel and powershift trans, semi-U blade with tilt, 4-barrel single shank ripper, differential steering, ROPS over enclosed cab with heat and ac, and 28" SBG pads. In good condition with good undercarriage (pins fair). (Meter Reads 6,170 Hours)

87 CAT D8N

12 CAT D5KXL

2012 CATERPILLAR D5KXL, s/n WWW01595, Cat C4.4 diesel and hydrostatic trans, 6-way blade, differential steering, draw bar, EROPS with heat and ac, and 20" SBG pads. In very good condition with very good undercarriage. (Meter Reads 824 Hours) (Purchased New)



01 CAT 953C

2001 CATERPILLAR 953C, s/n 2ZN04409, Cat 3116 diesel and hydrostatic trans, gp loader bucket with teeth, EROPS with heat, and 19" DBG pads. In good condition with very good undercarriage. (Meter Reads 5,332 Hours)



RUBBER TIRED LOADERS



2013 DOOSAN DL420-3, s/n DWGCW-LA0JD1010144, Scania DC13, 12.7 liter, 359HP diesel, s/n 6707831 and powershift trans, 5.5 cubic yard gp bucket with bolt-on cutting edge, joystick bucket control, EROPS with heat and ac, and 26.5R25 tires. In very good condition with very good tires. (Meter Reads 1,135 Hours) (SALES TAX) (ELEMENT)

13 DOOSAN DL420-3

2003 JOHN DEERE 544H, s/n 587897, JD 6.8L diesel and powershift trans, gp loader bucket with bolt-on cutting edge, ride control, EROPS with heat and ac, and 20.5R25 tiers. In good condition with fair to good tires. (Meter Reads 5,297 Hours)



03 JOHN DEERE 544H

1999 KOMATSU WA250-3PT, s/n A75244, Komatsu 6 cylinder diesel and powershift trans, JRB 3 cubic yard gp loader bucket with bolt-on cutting edge, JRB hydraulic coupler, auxiliary hydraulics, EROPS, and 20.5x25 tires. In good condition with good tires. (Meter Reads 7,898 Hours)



99 KOMATSU WA250-3PT

1983 KOBELCO LK300A, s/n LK300-2682, 6 cylinder diesel and powershift trans, gp loader bucket with bolt-on cutting edge, EROPS, and 16.9-24 tires. In fair condition with good to very good tires. (Meter Reads 6,102 Hours)

83 KOBELCO LK300A



TRACTOR LOADER BACKHOES AND ATTACHMENTS



02 CASE 580 SUPER M

1999 JOHN DEERE 310E, 4x4 Extend-A-Hoe, s/n 874551, JD diesel and shuttle trans, gp loader bucket with bolt-on cutting edge, 24" digging bucket, EROPS with heat, 12-16.5 front and 19L-24 rear tires. In good condition with fair to good tires. (Meter Reads 07,568 Hours)

1997 JOHN DEERE 310E, 4x4 Extend-A-Hoe, s/n 829197, JD diesel and shuttle trans, gp loader bucket with fork brackets, 18" digging bucket, EROPS with heat, 12-16.5 front and 19.5L-24 rear tires. In fair to good condition with fair to good tires. (Meter Reads 11,399 Hours)

1998 CASE 580 Super L Series II, 4x4 Extend-A-Hoe, s/n JG0259886, Case diesel and shuttle trans, gp loader bucket with fork brackets, 24" digging bucket, EROPS with heat and ac, 12-16.5 front and 19.5L-24 rear tires. In fair condition with good tires. (Meter Reads 9,446 Hours) (Missing 1 Door)

CASE D530 Tractor Loader Backhoe, s/n 8259568, Case diesel and direct drive, gp loader bucket. In fair to poor condition with poor tires.

Backhoe Attachments: 48", 45", and 42" Hanging Bucket Forks • 20" Bolt-On Asphalt Cutter • 30" Digging Bucket (Older Case 580)



99 & 97 JD 310E



98 CASE 580 SUPER L II

ASPHALT PAVERS



2008 CATERPILLAR AP-1055D Crawler, s/n FAC00551, Cat C-7 diesel and hydrostatic trans, Carlson EZIV-1019, 10'-19' heated vibratory screed, s/n 10090408, auto slope and grade, Top-con laser ready, on-board generator, central lube system and 18" rubber tracks. In good condition with good undercarriage. (Meter Reads 5,239 Hours) (SALES TAX) (SUNTRUST)

08 CAT AP-1055D

2002 CATERPILLAR AP-1055B Crawler, s/n ABB00442, Cat diesel and hydrostatic trans, Carlson MS10E, 10'-18' heated vibratory screed, s/n 1981, auto slope and grade, and sliding operators console. In good condition with good undercarriage. (Meter Reads 09,102 Hours)



02 CAT AP-1055B



05 CAT AP-655C

2000 BLAW-KNOX PF-3200 Rubber Tired, s/n 320027-89, Cummins 6 cylinder diesel and hydrostatic trans, Omni 3A, 10'-20' heated vibratory screed, s/n 10562-170, tandem steering bogies, front wheel assist, and 18.00-25 tires. In good condition with good tires. (Meter Reads 0,583 Hours) (Purchased New)

2005 CATERPILLAR AP-655C Crawler, s/n AYP00251, Cat diesel and hydrostatic trans, Cat Extend-A-Mat 8-16B, 8'-16' heated vibratory screed, s/n BWL00167, auto slope and grade, dual operator controls, and 16" rubber tracks. In good condition with good undercarriage. (Meter Reads 6,081 Hours)



00 BLAW KNOX PF-3200

SKID STEER LOADERS AND ATTACHMENTS



2007 CASE 445CT Crawler, s/n N7M458830, Case 4 cylinder diesel and hydrostatic trans, 82" gp loader bucket with bolt-on cutting edge, auxiliary hydraulics, ROPS canopy, and 18" rubber tracks. In good condition with good undercarriage. (Meter Reads 2,117 Hours) (Purchased New)

'07 CASE 445CT

2006 CATERPILLAR 257B Crawler, s/n SLK04525, Cat 4 cylinder diesel and hydrostatic trans, 73" gp loader bucket with bolt-on cutting edge, hydraulic coupler, high-flow auxiliary hydraulics, auxiliary electric, EROPS with heat and ac, and 14.5" rubber tracks. In good condition with fair to good undercarriage. (Meter Reads 3,224 Hours) (Missing Door)



'06 CAT 257B



2005 CASE 445, s/n N5M401646, Case 4 cylinder diesel and hydrostatic trans, 80" gp loader bucket with bolt-on cutting edge, auxiliary hydraulics, manual coupler, and solid tires. In good condition with good tires. (Meter Reads 0,379 Hours)

'05 CASE 445

1996 CASE 1840, s/n JAF0187696, Case diesel and hydrostatic trans, gp loader bucket with bolt-on cutting edge, auxiliary hydraulics, and solid tires. In good condition with fair to good tires. (Meter Reads 00,930 Hours) (Purchased New)



'96 CASE 1840



SKID STEER ATTACHMENTS

Fork Attachment • 44" Fork Attachment • 62" GP Loader Bucket, with teeth • (1 Set) Steel Tracks (12" Tires) • (2) Attachment Plates (Ohada 30 Hammer)

Skid Steer Attachments: **ROCK-HOUND** 60B, 60" Landscape Rake, s/n B97040210 • **MELROE** 48" Rock Saw Attachment • **ALITEC** CW18, 48" Rock Saw Attachment • (2) 18" Cold Planer Attachments • **SWEEPSTER** 84" Hydraulic Broom Attachment • **BRADCO** 76" Broom Attachment • **BRADCO** 48" GP Loader Bucket, with teeth • (1 Set)

3-Point Hitch Attachments: **2005 BUSH HOG** Squealer SQ160, 60" 3-Point Hitch Rotary Mower, s/n 12-00702. In very good condition • **KING KUTTER** 84" Backfill Blade, 3-point hitch

DISTRIBUTOR TRUCK AND MOBILE BROOM



2000 FREIGHTLINER FL70 Single Axle Distributor Truck, diesel and 5 speed trans with 2 speed rear, 2000 Rosco Maximizer II, 1,900 gallon distributor body, s/n 37057, with 12' spray bar, oil fired, ac, cruise control, and 11R22.5 tires. In good condition with fair to good tires. (Odometer Reads 38,208 Miles)

'00 ROSCO MAXIMIZER II

2002 ROSCO Challenger 2 Mobile Broom, s/n 38027, JD diesel and hydrostatic trans, 78" broom, EROPS with ac, and 235/80R16 tires. In good condition with good tires. (Meter Reads 4,998 Hours)

'00 ROSCO CHALLENGER II



ROAD WIDENER AND MOTOR GRADER



1988 BLAW-KNOX RW100 Road Widener, s/n 10010-10, JD diesel and hydrostatic trans, 5' swing away strike off, (1) 3', (1) 2', and (1) 1' extensions, 9' center broom, water system, moveable operators controls, and 15-22.5 tires. In good condition with fair to good tires. (Meter Reads 3,483 Hours)

'88 BLAW KNOX RW100

CATERPILLAR 14E Motor Grader, s/n 12K984, Cat 6 cylinder diesel and direct drive trans, 13' moldboard, front scarifier, enclosed cab, and 17.5-25 tires. In fair condition with fair to poor tires.

CAT 14E



ROCK SAW AND CURB MACHINE



1997 VERMEER CC-145 Rock Saw, s/n 1VRS122V0V1000124, Cummins 6 cylinder diesel and hydrostatic trans, Vermeer CC84A, 84" rock saw, water system, enclosed cab with ac, and 12-16.5 tires. In good condition with (2) very good and (2) fair tires. (Meter Reads 02,673 Hours)

'97 VERMEER CC-145

2002 POWER CURBER 5700-B Concrete Curb Machine, s/n 0220460, diesel and hydraulic drive, (2) molds, auto slope and grade, string line steering, (3) 12" TBG, and 56" crawlers. In good condition with good undercarriage. (Meter Reads 01,825 Hours)



'02 POWER CURBER 5700-B

ROUGH TERRAIN CRANE



1991 GROVE RT745, 45 Ton Rough Terrain Crane, s/n 75126, Cat 3208 diesel and powershift trans, 34' - 81' 3-section hydraulic boom and power pin fly to 104', 32' - 56' telescopic swing away jib, main and auxiliary hoists, PAT DS350G LMI system, Johnson 35 ton 3-sheave hook block, Johnson ball, and (4) hydraulic outriggers. In good condition with good tires. (Meter Reads 9,785 Hours)

'91 GROVE RT745

AERIAL LIFT AND TRENCHER



2000 SNORKEL TB-A42RDZ, 42', 4x4 Aerial Lift, s/n MY00071, Deutz diesel and hydrostatic trans, 30"x96" man/material basket. In fair to good condition with good tires. (Meter Reads 3,434 Hours)

'00 SNORKEL 42'

DITCH WITCH R40 Trencher, s/n 404223, Wisconsin 4 cylinder gas and direct drive, 6' trencher bar with crumber, 64" backfill blade, front auxiliary hydraulics, ROPS post, and 29x12.50-15 tires. In good condition with good tires. (Meter Reads 1,672 Hours)



DITCH WITCH R40

COMPACTORS AND ROLLERS



1999 CHAMPION 840 SuperPac Compactor, s/n X101385, Cummins 6 cylinder diesel and hydrostatic trans, 84" smooth drum, drum drive, ROPS canopy with light package, and 29.5-25 tires. In good condition with fair to good tires. (Meter Reads 02,871 Hours)

'99 CHAMPION 840

2007 SAKAI SW800 Tandem Vibratory Roller, s/n VSW25-30139, Isuzu diesel and hydrostatic trans, 67" smooth drums, drum cleaners, 3-speed vibration, water system, sliding operator console, and ROPS canopy. In good condition. (Meter Reads 3,202 Hours) (Purchased New)



'07 SAKAI SW800



2004 SAKAI SW800 Tandem Vibratory Roller, s/n VSW19-10148, Isuzu diesel and hydrostatic trans, 67" smooth drums, drum cleaners, water system, sliding operators console, and ROPS canopy. In good condition. (Meter Reads 4,797 Hours) (Purchased New)

'04 SAKAI SW800

1999 DYNAPAC CC422 Tandem Vibratory Roller, s/n 62510728, Cummins 4 cylinder diesel and hydrostatic trans, 66" smooth drums, drum cleaners, water system, sliding operators console, and ROPS canopy. In good condition. (Meter Reads 0,386 Hours)



'99 DYNAPAC CC422



2010 SAKAI SW320-1 Tandem Vibratory Roller, s/n 4SW50-40129C, Kubota 3 cylinder diesel and hydrostatic trans, 47" smooth drums, drum cleaners, variable speed vibration, water system, and ROPS post. In good condition. (Meter Reads 2,285 Hours) (Purchased New)

'10 SAKAI SW320-1

2005 SAKAI SW300 Tandem Vibratory Roller, s/n VSW29-30196, Kubota 3 cylinder diesel and hydrostatic trans, 39" smooth drums, drum cleaners, variable speed vibration, water system, and ROPS post. In good condition. (Meter Reads 2,523 Hours) (Purchased New)



'05 SAKAI SW300

INGRAM 10-15 Ton 3-Wheel Roller, s/n 598902-AE3, Cummins diesel and hydrostatic trans, 44" smooth front and 22" smooth rear drums, drum cleaners, water system, and ROPS canopy. In good condition. (Meter Reads 2,453 Hours)

HYSTER C530A, 9-Wheel Roller, s/n A091CH003K, 4 cylinder diesel and hydrostatic trans, enclosed cab. In fair to good condition with fair to good tires. (Meter Reads 2,468 Hours) (Missing Door)

(2) 2011 BELLE BWR650 Walk Behind Compactors, s/n 351093 and s/n 351084, Kubota 1 cylinder diesel and hydrostatic trans, 25.5" smooth drums, drum cleaners, and water system. In good condition. (Purchased New)

(2) 2011 BELLE BWR650 Walk Behind Compactors, s/n 351093 and s/n 351084, Kubota 1 cylinder diesel and hydrostatic trans, 25.5" smooth drums, drum cleaners, and water system. In good condition. (Purchased New)



'11 BELLE BWR650



2006 WACKER RT-82SC Trench Compactor, s/n 5676597, diesel and hydrostatic trans. In good condition. (Meter Reads 920 Hours)

(1) OF (2) WACKER RT-82SC

2004 WACKER RT-82SC Trench Compactor, s/n 5497346, diesel and hydrostatic trans. In good condition. (Meter Reads 1,072 Hours)

Tow Behind Double Drum Sheepfoot Compactor, (2) 48" sheepfoot drums. In good condition.

TRUCK TRACTORS AND LOWBOY TRAILERS



(2) OF (3) KENWORTH W900

1997 KENWORTH W900 Tandem Axle Truck Tractor, Cummins N-14, 435HP diesel and Eaton Fuller 13 speed trans, 60" sleeper, wetline, air slide 5th wheel, air ride suspension, 3-stage engine brake, 48,000# GVWR, 267" wheelbase, aluminum wheels, heated mirrors, ac, cruise control, and 11R24.5 tires. In fair condition with good tires.

1995 KENWORTH W900B Tandem Axle Truck Tractor, Cat 3406E, 500HP diesel and Eaton Fuller 13 speed trans, 38,000# rears and 12,000# front axle, wetline, air slide 5th wheel, air ride suspension, 3-stage engine brake, 50,000# GVWR, 267" wheelbase, aluminum wheels, heated mirrors, ac, cruise control, and 285/75R24.5 tires. In fair condition with fair tires.

1995 KENWORTH W900B Tandem Axle Truck Tractor, Cat 3406E diesel and Eaton Fuller 13 speed trans, 38,000# rears and 12,000# front axle, wetline, air slide 5th wheel, air ride suspension, 3-stage engine brake, 50,000# GVWR, 267" wheelbase, aluminum wheels, heated mirrors, ac, cruise control, and 11R24.5 tires. In fair condition with good tires.



1990 TALBERT T3D-50-HRG-1-T1, 50 Ton Tandem Axle Lowboy Trailer, non-ground bearing detachable gooseneck, 8'x23'6" level deck, 7'9" over axles, wetline, setup for 3rd axle, air ride suspension, chain dogs, outriggers, and 255/70R22.5 tires. In good condition with good tires.

1989 EAGER BEAVER 25 Ton Tandem Axle Lowboy Trailer, ground bearing detachable gooseneck, 8'x24' level deck, 6' deck over wheels, outriggers, chain dogs, and 8.25R15 tires. In fair to good condition with good tires.



DUMP TRUCKS



'95 FORD LTL9000

aluminum front wheels, 315/80R22.5 front, 11R24.5 lift and rear tires. In good condition with fair tires.

1998 INTERNATIONAL 4700 Single Axle Dump Truck, Int'l DT466E diesel and 5 speed trans, Thiele 12' steel dump body, tow package, heated mirrors, cruise control, and 295/75R22.5 tires. In good condition with good tires.



'97 & '98 INT'L DUMPS

1997 INTERNATIONAL 4900 Single Axle Dump Truck, Int'l DT466E diesel and 6 speed trans, Thiele 12' steel dump body, 22,700# rear and 10,000# front axle, 32,700# GVWR, tow package, heated mirrors, cruise control, and 275/80R22.5 tires. In good condition with good tires.

1996 FORD F-800 Single Axle Dump Truck, Cat 3208 diesel and 5 speed trans with 2 speed rear, 9' steel dump body, 28,000# GVWR, spring suspension, tow package with air and electric, and 10.00-22.5 tires. In good condition with good tires.

WATER TRUCKS AND VAN BODY TRUCKS



(2) '99 FREIGHTLINER FL70

2001 INTERNATIONAL 4700 Single Axle Van Body Truck, Int'l DT466E diesel and 5 speed trans, Morgan 24" aluminum van body, roll-up rear door, heated mirrors, ac, cruise control, and 295/75R22.5 tires. In good condition with good tires.

1999 FREIGHTLINER FL70 Single Axle Water Trucks, Cummins 6 cylinder diesel and 6 speed trans, 12' body, 2,000 gallon poly water tank with 3" gas pump and front discharge coupler, 100 gallon external fuel tank, air ride suspension, 26,000# GVWR, ac, cruise control, and heated mirrors. In good condition with good tires.



'01 & '99 INT'L 4700

1999 INTERNATIONAL 4700 Single Axle Van Body Truck, Int'l DT466E diesel and auto trans, Morgan 24" aluminum van body with rollup rear door, curbside door, lift gate, heated mirrors, ac, cruise control, and 295/75R22.5 tires. In good condition with good tires.



'98 FREIGHTLINER FL70

1998 FREIGHTLINER FL70 Single Axle Van Body Truck, Cummins 6 cylinder diesel and 6 speed trans, Morgan 22" aluminum van body with fiberglass roof, rear roll-up door, 26,000# rear and 11,794# front axle, heated mirrors, ac, and 295/75R22.5 tires. In good condition with fair tires.

(13) UTILITY TRUCKS



(3) OF (9) CHEVY UTILITY TRUCKS



(1) OF (9) CHEVY UTILITY TRUCKS

(2) 2006 CHEVROLET 3500 Crew Cab, 6.0L gas and auto trans, Stahl 8' open utility body • **(2) 2005 CHEVROLET 3500 Crew Cab**, 6.0L gas and auto trans, Knapheide 8' open utility body • **2005 CHEVROLET 2500**, 5.0L gas and auto trans, Stahl 8' open utility body • **(2) 2004 CHEVROLET 3500 Crew Cab**, Vortec 6.0L gas and auto trans, 8' open utility body • **2003 CHEVROLET 3500 Crew Cab**, 6.0L gas and auto trans, Stahl 8' open utility body • **2003 CHEVROLET 3500 Crew Cab**, 6.0L gas and auto trans, 8' open utility body • **(3) 2003 DODGE Ram 3500 Crew Cab**, Hemi 5.7L gas and auto trans, Reading 8' open utility body • **1998 INTERNATIONAL 4700**, Int'l DT466E diesel and 5 speed trans, 13' open service body



(2) OF (3) '03 DODGE 3500

FLATBED TRUCKS



(2) OF (3) DODGE FLATBED TRUCKS



'97 GMC T6500

(2) 2003 DODGE Ram 3500 Crew Cab, Hemi 5.7L gas and auto trans, 10' flatbed with 8' wood stake sides • **2000 DODGE Ram 3500**, Magnum V-8 gas and auto trans, 8' flatbed body • **1999 FORD F-350**, Powerstroke 7.3L diesel and auto trans, 12' flatbed • **1998 FREIGHTLINER FL70**, diesel and 6 speed manual trans, 24" flatbed body, air brakes, spring suspension, 26,000# GVWR • **1997 GMC T6500**, Cat 3116 diesel and 6 speed trans, 18" flatbed body, 25,740# GVWR

(11) CARGO AND TAG-A-LONG TRAILERS



(5) OF (11) TAG-A-LONGS

1995 INTERSTATE 40DLA, 20 Ton Tandem Axle Tag-A-Long Trailer, 8'x24' level deck, 5' beavertail, 4" ramps, 47,350# GVWR, air brakes • **2007 PACE JE714TA2** Tandem Axle Cargo Trailer, 7'x14' aluminum cargo box, swing rear and side doors, 7,000# GVWR • **2012 CAM Superline** Tandem Axle Tilt Deck Tag-A-Long Trailer, 6'9"x16' level deck, 2' beavertail, electric brakes, 7,000# GVWR • **(2) 2007 PJ** Tandem Axle Tilt Deck Tag-A-Long Trailers, 4' front deck, 6'10"x17' tilting section • **2003 CAM** Tandem Axle Tilt Deck Tag-A-Long Trailer, 6'6"x16' level deck, 2' beavertail, 13,800# GVWR • **2012 QUALITY FP-7K-23P** Tandem Axle Tag-A-Long Trailer, 8'x19' level deck, 4' beavertail, 5' ramps, 15,000# GVWR • **(2) 2005 MILLENNIUM M6F18P** Tandem Axle Tag-A-Long Trailers, 6'9"x18' level deck, 4' ramp, 12,500# GVWR • **2003 MILLENNIUM M5F16P** Tandem Axle Tag-A-Long Trailer, 6'10"x16' level deck, 4' ramps, 9,990# GVWR • **1995 INTERSTATE** Tandem Axle Tag-A-Long Trailer, 7'6"x11'4" level deck, 32" beavertail, 48" ramps



(1) OF (11) TAG-A-LONGS

PICKUP TRUCKS



'09 GMC SIERRA

2009 GMC Sierra Crew Cab, Vortec 4.8L gas and auto trans • **2008 CHEVROLET** Crew Cab, 4.8L gas and auto trans • **2005 GMC 2500HD**, 6.0L gas and auto trans • **2003 DODGE Ram 2500 Crew Cab**, Hemi 5.7L gas and auto trans



'08 CHEVY

ARROWBOARDS, TAR BUGGY, AND TRUCK SCALE



(2) PSI Portable Solar Arrowboard, manual raise and lower, (4) manual stabilizers, onboard battery charger • **1995 CRAFTO** Tar Buggy, s/n 1C9EL122XS1418218, Isuzu 3 cylinder diesel • **FAIRBANKS** 90,000# Axle Scale, 7'x10'x6" scale with (2) 29" ramps and digital readout, 12 volt battery

(1) OF (2) PSI ARROWBOARDS

CONCRETE FORMS

SYMONS Handset Concrete Forms:

(54) 24"x96" • (105) 24"x72" • (31) 16"x48" • (41) 12"x48" • Large Quantity Filler Panels • (5) Corners • (8) Angles • Overhang Jacks • Turnbuckles and Adjustable Wall Braces • Braces • (15 Pallets) Hardware

Curb and Radius Forms: (9) 24"x10' Curb Forms • (40) 18"x10' Curb Forms • (24) 10"x10' Curb Forms • (97) 8"x10' Curb Forms • (25) 18"x10' Radius Forms

Parapet Forms: (8) 43"x10' • (14) 33"x10'

Large Quantity of Wood Panel Forms • (15 Pallets) Form Hardware • (3 Pallets) Form Pins • Large Quantity of Rebar and Rebar Chairs • (270) 3"x6"x8" Oak Timbers (UNUSED) • (11) 3"x6"x12' Oak Timbers (UNUSED) (1 Pallet) Plywood



CONCRETE FORMS

CONCRETE CONTRACTORS TOOLS



ALLEN 70' Pneumatic Sectional Concrete Screed • **ALLEN** 6"x13'6" Power Roller Screed, (2) power heads, (1) Honda 5.5HP gas, (1) Tecumseh 3HP gas • **ALLEN** Power Curing Sprayer, Honda 5.5HP gas, 50' hose, mounted on 3-wheeled trailer with 55 gallon drum capacity • **MULTIQUIP** MC-64P Portable Mixer, Honda 8HP gas • **STONE** 65CM Portable Mixer, Honda 8HP gas • **TOROM-M-658H** Portable Mixer, Honda gas • Concrete Mixer, Briggs & Stratton gas • Small Mortar Mixer, electric • **TARGET** Pro 35II Walk Behind Concrete Saw, gas • **STONE** Walk Behind Concrete Saw, 13HP gas • (1) 36", (2) 30", (1) 26" Concrete Saw Blades • (2)

CONCRETE CONTRACTORS TOOLS

MILWAUKEE Electric Core Drills, with stand and vacuum pumps • **HILTI** DD200 Electric Core Drill, with stand • (9) 3"-12" Core Drill Bits • (2) Vibratory Hand Held Concrete Screeds, Honda gas • (2) **OZTEC** BP50A Gas Powered Backpack Vibrators • (5) **OZTEC** 2.4mm Electric Vibrators • (1) 36" and (1) 14" **STONE** Textured Stamp Rollers • Assorted Bull Floats and Concrete Finishing Tools • (4) Concrete Chutes • Approximately (75) Concrete Blankets • (8) Manual Form Sprayers • 24"x32' Aluminum Pic Board • (35 Boxes) Concrete Test Cylinders (UNUSED)

CONTRACTORS TOOLS



CONTRACTORS TOOLS

WACKER BS-50.2 Foot Compactor • **WACKER** BS-500 Foot Compactor • (2) **MBW** R270 Foot Compactors • **WACKER** Plate Compactor • (3) **MBW** 2000 Plated Compactors • **SWEEPSTER** 32" Walk Behind Broom 9HP gas • **TAHOE** 7000 Watt Diesel Powered Generator • **HONDA** 5000 Watt Gas Powered Generator • (2) **CHAMPION** 4000 Watt Gas Powered Generators • **HONDA** 3000 Watt Gas Powered Generator • **MULTIQUIP** 2500 Watt Gas Powered Generator • **HONDA** 2500 Watt Gas Powered Generator • **IR** G5H Generator (Not Running) • (2) **TSURUMI** 4" Trash Pumps, Honda gas, mounted on pump skid with fuel tank • (4) 3" Trash Pumps, gas • (2) 3" Centrifugal Pumps, gas •

(2) **TSURUMI** 2" Electric Submersible Pumps • (4 Pallets) 4" and 6" Suction and Discharge Hose • **CRAFTO** 200 Walk Behind Join and Crack Cleaner/Sealer, Onan 2 cylinder gas • **GENERAL** GP8 Gas Powered Ventilator, with hose • **GENERAL** EP8HL Electric Powered Ventilator, with hose • **2009 AXIOM** 3.5CF/150 PSI Portable Sandblaster with whip line and accessories • Assorted Fiberglass and Aluminum Ladders • Wheelbarrows • Assorted C-Clamps

TRENCH BOXES, ROAD PLATE, I-BEAMS, AND VAN BODIES

Trench Boxes: 8'x16'x4" Trench Box, with 36" spreaders • **KUNDEL** 8'x12'x5" Trench Box, with 24" spreaders • (4) 72" Spreaders • (4) 30" Spreaders • (4) 24" Spreaders • (8) **KUNDEL** SLP-2x10, 2'x10' Aluminum Trench Box Panels, with adjustable spreaders • (6) **KUNDEL** SLP-2x5, 2'x5' Aluminum Trench Box Panels, with adjustable spreaders

Road Plate: 3/4" and 7/8" Thickness - (5) 6'6"x11'6" • 7'x10' • 6'10"x11'9" • (2) 8'x10' • 8'x8' • 5'x12' • 4'10"x11' • (3) 4'x12'; 1" and 1-1/4" Thickness - (5) 4'x8'; 1/2" Thickness - (11) 3'x5'



ROAD PLATE



I BEAMS

Steel I-Beams: (7) 26'6"-30'x11-1/4"x17" web • (8) 16'-18'x11-1/4"x17" web • (6) 12'-14'x11-1/4"x17" web • (6) 8'6"-10'x11-1/4"x17" web • (4) 5'6"-7'x11-1/4"x17" web • (5) 7'-10'x10-1/4"x9" web piling cutoffs • (8) 10'6"-19'x12-1/4"x11" web • 35'x12"x10-3/4" web galvanized I-beam

Van Bodies: 18'6" Fiberglass Van Body, with roll-up rear door • 20'6" Aluminum Van Body, with roll-up rear door • 26' Aluminum Van Body, with roll-up rear door • (3) 25' Aluminum Van Bodies, each with roll-up rear door • 18'6" Reefer Van Body, with swing rear door



VAN BODIES

CONSTRUCTION MATERIALS



CONSTRUCTION MATERIALS

Large Quantity Road Signs and Sign Stands • (2 Pallets) Safety Cones • (14) Safety Barrels • (4 Pallets) Orange Safety Fence • (1 Pallet) Flashing Lights • (1 Pallet) Crosswalk Markers • (1 Pallet) Silt Fence • (25) 34"x12' Jersey Barriers (splice plate type) • (36) 32"x12' Jersey Barriers (tongue and groove) • (25) 52"xVarious Length Jersey Barriers (splice plate type) • (6) 42"x14' Jersey Barriers, with tapered ends • Large Quantity 2'x2'x6' Concrete Dead Men • **KENCO** 36" Barrier Lifter • **KENCO** 20" Barrier Lifter • (10) 46"x20' Corrugated PVC Pipe, with bends • (5) 60"x20', (2) 24"x20', (5) 20"x20', (5) 18"x20' Corrugated Galvanized Pipe • (19 Sections) Concrete Pipe • (3) 45" Manhole Risers • Drain Inlet Boxes • Inlet and Curb Risers • (5 Pallets) Drain Inlet Grates • (9 Pallets) Manhole Risers and Lids • (4 Pallets) Water Main Sleeves and Caps • Assorted Ductile Iron, Steel, and PVC Pipe • (1 Roll) 6' Chain Link Fence • (2 Sections) 7'x9'6" Gate • 6' Man Gate • (12 Pieces) Expansion Joint • (9) 18' Temporary Electric Poles • (1) 29' Temporary Electric Pole • (60 Pieces) 6'7" Straight Guardrail • (49 Pieces) 14' Straight Guardrail • (7 Pieces) 14' Curved Guardrail • Guardrail Posts and Accessories • (1 Pallet) Bridge Decking • (15 Pieces) 6'x16" Wire Mesh • (5 Partial Rolls) Filter Cloth and Geo-Textile Fabric • (1 Pallet) 1-1/4" x 18" Dowell Rods • (3 Pallets) Burlap • (1 Pallet) Expansion Joint • (1 Pallet) Tar Paper and Water Proofing • (1 Pallet) Grade Stakes • (2) Truck Lift Gates • Pickup Ladder Rack (For 8' Beds) • 1,000 Gallon Fuel Tank • 500 Gallon Fuel Tank • **READING** 8' Utility Truck Body • (6 Piece) Tri-Axle Trailer Fender Kit • (2 Pallets) Lowboy Outriggers • 42"x60" Feed Hopper • (3) 48"x96" Screens • (1 Pallet) Garage Door Parts • Shopmade Shop Gantry, 10'6" H x 15' W, steel wheels • **CAT** 3208 Diesel, complete with radiator, mounted on steel frame (condition unknown) • **ISUZU** 4 Cylinder Gas, with radiator and steel frame (condition unknown) • **CHEVY** 8 Cylinder Gas (engine knock) • Large Quantity Field Office Furniture • Miscellaneous Saw Horses • 2-Sheave Hook Block (crane) • (2) Small Wrecking Balls