

E  
B  
A  
R  
A

# Standard Pump Division



**Water, Wastewater & Commercial Pumps**



*Over 30 years of U.S. direct service; nearly 100 years of engineering & manufacturing expertise.*

# Standard Pump Division



EBARA International Corporation (EIC) Standard Pump Division, located in Rock Hill, SC is the US sales and service subsidiary of EBARA Corporation, Japan. With 53 subsidiaries in 17 countries and annual sales exceeding \$5B, EBARA Corporation is one of the world's largest, leading pump manufacturers. The EIC Standard Pump Division offers a full product line in both cast iron and stainless steel pumps.

With horsepower ranges up to 800 HP and capacities to 100,000 GPM, EIC Standard Pump Division's cast iron submersible pumps meet a wide range of industrial, municipal, flood control, and residential water and wastewater applications. The cast iron line of pumps includes submersible sewage, submersible sump, semi-vortex, vortex, grinder, non-clog, and dry pit models.

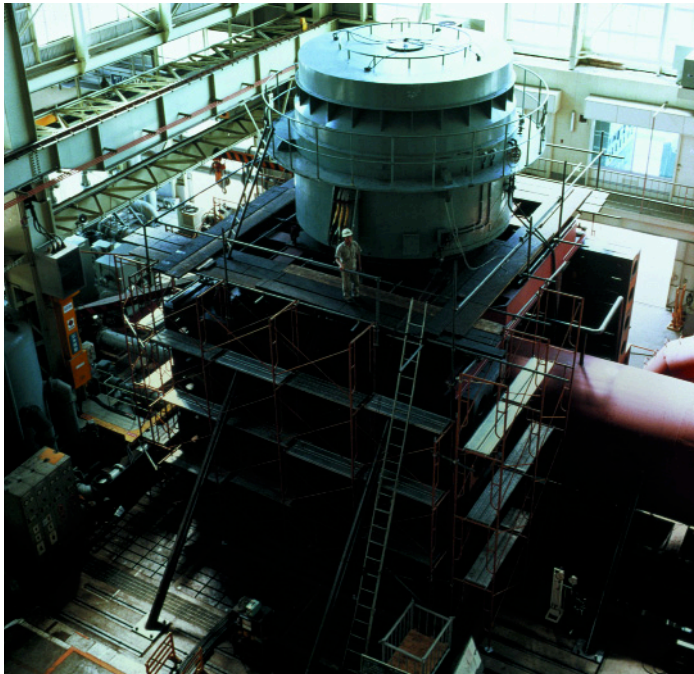
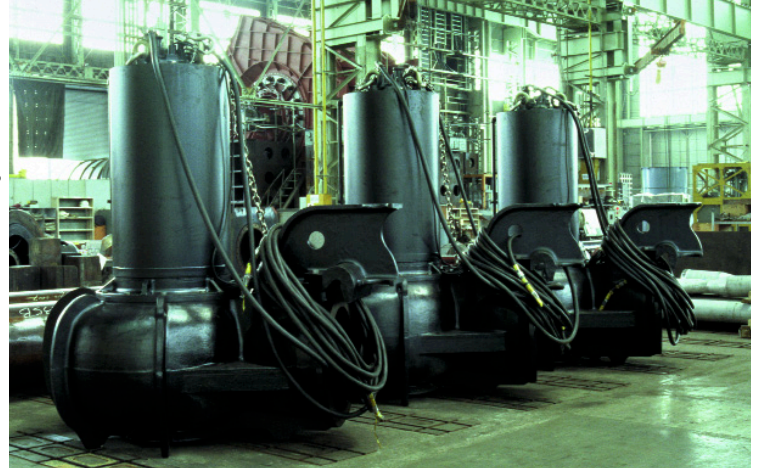
EIC offers a comprehensive line of corrosion resistant formed stainless steel pumps that include end suction centrifugal, multistage, and submersible sump, effluent, and sewage pumps.



EIC Standard Pump Division maintains inventory that allows it to assemble, test, and ship 1/2 to 60 HP cast iron submersible pumps in 5 to 14 working days, and as well, offer a 24-hour Quick Ship program on most stainless steel pumps and parts. EIC Standard Pump also serves as EBARA Corporation's worldwide Custom Service Center to assist customers in replacement of parts or complete pumps and motors.

# EBARA Corporation

EBARA Corporation is viewed as a leading international manufacturer of rotating and process equipment, as well as an engineering firm active in research and development, project design, and construction. The variety of pump types and sizes produced by EBARA is tremendous ranging from fractional horsepower recirculation pumps to vertical mixed flow pumps with horsepowers into the thousands.



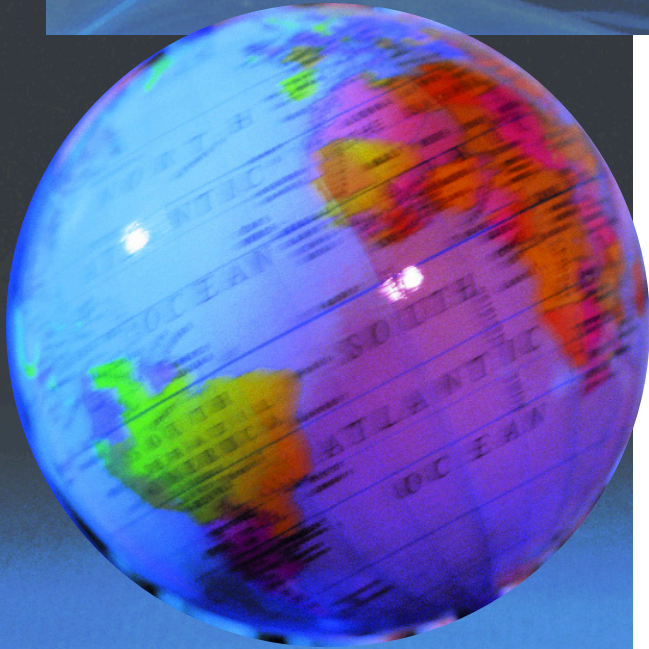
EBARA's engineering and manufacturing capabilities are best demonstrated by the Haneda manufacturing plant which also serves as headquarters for EBARA Corporation. The plant operates under ISO 9000 and uses an integrated and highly efficient quality control system. The Haneda plant has one of the largest test facilities in the world capable of delivering up to 500,000 GPM with shop drivers up to 14,500 HP. EBARA's H-series of cast iron pumps are manufactured at the Haneda plant.

EBARA's Fujisawa plant is one of the most technologically advanced manufacturing plants for the mass production of small size pumps; including the D-series of cast iron pumps.

EBARA developed technology to pressure bulge form stainless steel pump components. The resulting pumps offer superior quality, precise dimensions, increased efficiencies, lighter weights, greater strength, and exceptional value. The EBARA Italia plant (located in Cles, Italy) is equipped with state-of-the-art computer controlled pressure forming and processing equipment that now produces over 55,000 pumps per month.



# EBARA Fact Sheet



**US Location:** EBARA International Corporation  
Standard Pump Division  
Rock Hill, SC

**Established:** 1980

**Regional locations:** 10

**Products:** Submersible cast iron  
Stainless steel centrifugal

**Applications:**

- Water
- Wastewater
- Sewage
- Sump
- Effluent
- Dewatering
- Flood control

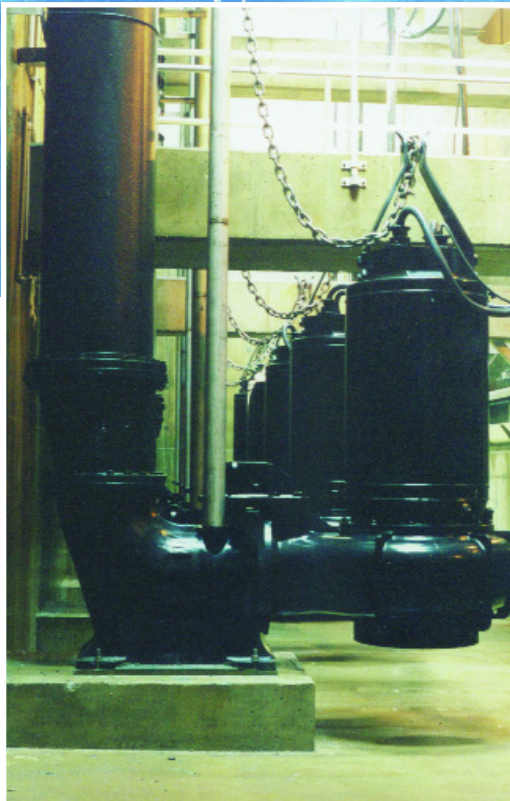
**Scope of services:**

- Sales
- Assembly
- Technical specifications and assistance
- Testing
- Warehouse
- Quick Ship program
- Worldwide Custom Service Center (obsolete pump and/or parts)

**Headquarters:** Haneda, Japan

**Established:** 1912

**Subsidiaries:** 53



*Influent relief pump station installation, Chattanooga, TN  
photo courtesy of Consolidated Technologies, Inc.*

# Commercial Pumps



## Model 3U/3UB

*Pro Steel end suction*

### Applications

- Plant services
- Water supply systems
- Water reclamation and treatment
- Liquid transfer
- Temperature control

### Specifications

Suction Size:	2" to 3"	Discharge Size:	1 1/4" to 2 1/2"
Range of HP:	to 30 HP		
Capacity:	to 750 GPM		
Head:	to 250 ft.		
Liquid:	Clean water		



## Model JEU

*Pro Steel self priming*

### Applications

- Plant services
- Water supply systems
- Pressure boosting
- Ultrapure water systems
- Water reclamation and treatment

### Specifications

Suction Size:	1 1/4"	Discharge Size:	1"
Range of HP:	to 1 1/2 HP		
Capacity:	to 18.5 GPM		
Head:	to 190 ft.		
Liquid:	Clean water		



## Model EVMU/EVMUG

*Pro Steel high pressure*

### Applications

- Water treatment
- Boiler feed
- HVAC
- Water boosting systems
- High pressure cleaning
- Washing systems

### Specifications

Suction Size:	1 1/4" to 4"	Discharge Size:	1 1/4" to 4"
Range of HP:	to 50 HP		
Capacity:	to 390 GPM		
Head:	to 930 ft.		
Liquid:	Clean water		

# Commercial Pumps



## Model CDU, CDX

*Pro Steel end suction*

### Applications

- Plant services
- Water supply systems
- Liquid transfer
- Ultrapure water systems
- Water reclamation and treatment

### Specifications

Suction Size:	1 $\frac{1}{4}$ " to 1 $\frac{1}{2}$ "	Discharge Size:	1"
Range of HP:	to 3 HP		
Capacity:	to 95 GPM		
Head:	to 245 ft.		
Liquid:	Clean water		



## Model 2CDX, 2CDU

*Pro Steel two-stage end suction*

### Applications

- Plant services
- Water supply systems
- Liquid transfer
- Ultrapure water systems
- Water reclamation and treatment

### Specifications

Suction Size:	1 $\frac{1}{4}$ " to 1 $\frac{1}{2}$ "	Discharge Size:	1"
Range of HP:	$\frac{3}{4}$ to 5 HP		
Capacity:	65 GPM		
Head:	245 ft.		
Liquid:	Clean water		



## Model DWO

*Pro Steel open impeller end suction*

### Applications

- Food Process
- Beverage Process
- Dirty liquid handling
- OEM equipment application
- Water reclamation and treatment

### Specifications

Suction Size:	2" to 2 $\frac{1}{2}$ "	Discharge Size:	2"
Range of HP:	1.5 to 4 HP		
Capacity:	to 250 GPM		
Head:	35 to 65 ft.		
Liquid:	suitable for suspended solids in dirty water to $\frac{3}{4}$ " (spherical)		

# Water & Wastewater/Commercial



## Model EPD, EPPD

*Pro Drainer – sump, drainage*

### Applications

- Drainage (basements, sumps, excavation)
- Seepage (residential, commercial, industrial)
- Effluent and containment transfer
- Emptying (pools, water storage structures)

### Specifications

Discharge Size: 1¼" to 1½"

Range of HP: to 1½ HP

Capacity: to 88 GPM

Head: to 62 ft.

Max. solid dia.: ¾"

Single and three phase models; manual or automatic



## Model DWU, DWXU

*Dominator – small sump, effluent*

### Applications

- Wastewater with suspended solids
- Residential, commercial, and industrial applications

### Specifications

Discharge Size: 2"

Range of HP: to 3 HP

Capacity: to 240 GPM

Head: to 75 ft.

Max. solid dia.: 2"

Single and three phase models; manual or automatic



## Model DMLU, CMLU

*Submersible water/wastewater*

### Applications

- Commercial/Industrial water and wastewater
- Drainage (household, industrial)
- Dewatering

### Specifications

Size: 3", 4", 6"

Range of HP: 3 to 30 HP

Capacity: to 1345 GPM

Head: to 136 ft.

Max. solid dia.: 3"

Three phase (only) models available

# Water & Wastewater



## Model DSU, DSHU

*Submersible sump*

### Applications

- Watering
- Dewatering
- Drainage
- Construction

### Specifications

Size: 2", 3", 4"

Range of HP: to 10 HP

Capacity: to 390 GPM

Head: to 126 ft.

Single and three phase models available



## Model DVSU, DVSHU

*Submersible semi-vortex sewage*

### Applications

- Water
- Wastewater
- Drainage

### Specifications

Size: 2", 3"

Range of HP: to 5 HP

Capacity: to 250 GPM

Head: to 90 ft.

Max. solid dia.: 2 $\frac{1}{4}$ "

Single and three phase models available



## Model DLU

*Water/Wastewater submersible sump*

### Applications

- Sewage
- Drainage (household, industrial)
- Irrigation

### Specifications

Size: 2", 3", 4"

Range of HP: to 5 HP

Capacity: to 400 GPM

Head: to 66 ft.

Max. solid dia.: 3"

Single and three phase models available



# Water & Wastewater



---

## Model DVU

*Submersible vortex non-clog*

---

### Applications

- Sewage
  - Drainage (household, industrial)
  - Stockbreeding
  - Solid handling
  - Industrial/municipal water and wastewater
- 

### Specifications

Size: 2", 3", 4"

---

Range of HP: to 5 HP

---

Capacity: to 430 GPM

---

Head: to 66 ft.

---

Max. solid dia.: 4"

---

Single and three phase models available

---



---

## Model DGUII, DGFU

*Submersible grinder*

---

### Applications

- Small scale pressurized sewage transfer systems
  - Drainage transfer
  - Commercial/Household sewage and drainage transfer
- 

### Specifications

Size: 2"

---

Range of HP: to 5 HP

---

Capacity: to 80 GPM

---

Head: to 150 ft.

---

FM explosion proof available

---



---

## Model DLFU

*Submersible non-clog*

---

### Applications

- Industrial/Municipal water and wastewater
  - Flood control
- 

### Specifications

Size: 2" to 12"

---

Range of HP: 2 to 60 HP

---

Capacity: to 4000 GPM

---

Head: to 243 ft.

---

Max. solid dia.: 3¼"

---

FM explosion proof available

---

# Water & Wastewater



## Model DVFU

*Water/Wastewater vortex submersible non-clog*

### Applications

- Sewage
- Drainage (household, industrial)
- Stockbreeding
- Solid handling
- Industrial/municipal water and wastewater

### Specifications

Size: 2" to 6"

Range of HP: 2 to 30 HP

Capacity: to 1200 GPM

Head: to 121 ft.

Max. solid dia.: 5"

FM explosion proof available



## Model DDLFU

*Water/Wastewater dry pit non-clog*

### Applications

- Industrial water and wastewater
- Municipal water and wastewater

### Specifications

Size: 4" to 12"

Range of HP: to 60 HP

Capacity: to 4000 GPM

Head: to 243 ft.

Max. solid dia.: 3¼"

FM explosion proof available



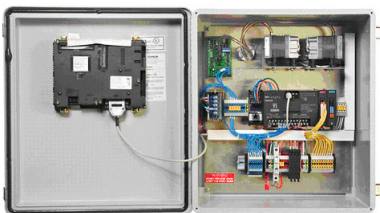
## Station Boss

*Water/Wastewater flow control system*

*Adjust pump flow to meet system requirements, thereby increasing pump station capacity and improving efficiencies*

### Features

- Bubbler, Transducer or Float Operation
- User Friendly Screen Operation
- Plug and Play VFD Operation
- Pump continually trims to system curve
- Unlimited starts per hour
- Automatic reverse on startup at 150% torque
- Allows 3-Phase pumps to be operated from 1-phase power feed
- Controls up to 4 pumps
- Optimum Energy Controller



# Water & Wastewater



---

## **Model DSC3**

*Large Sewage/Wastewater submersible non-clog*

---

### **Applications**

- Industrial/Municipal water and wastewater
  - Flood control
- 

### **Specifications**

Size:	6" to 24"
Range of HP:	to 800 HP
Capacity:	to 35,000 GPM
Head:	to 300 ft.
Max. solid dia.:	8 1/8"

---

FM explosion proof available

---



---

## **Model DSZ3**

*Large Sewage/Wastewater submersible propeller*

---

### **Applications**

- Municipal effluent and process systems
  - Flood control
  - Amusement parks
- 

### **Specifications**

Size:	24" to 60"
Range of HP:	to 800 HP
Capacity:	to 55,000 GPM
Head:	to 50 ft.

---

FM explosion proof available

---



---

## **Control Panels**

*Basic, Standard, or Custom*

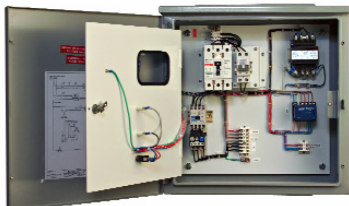
---

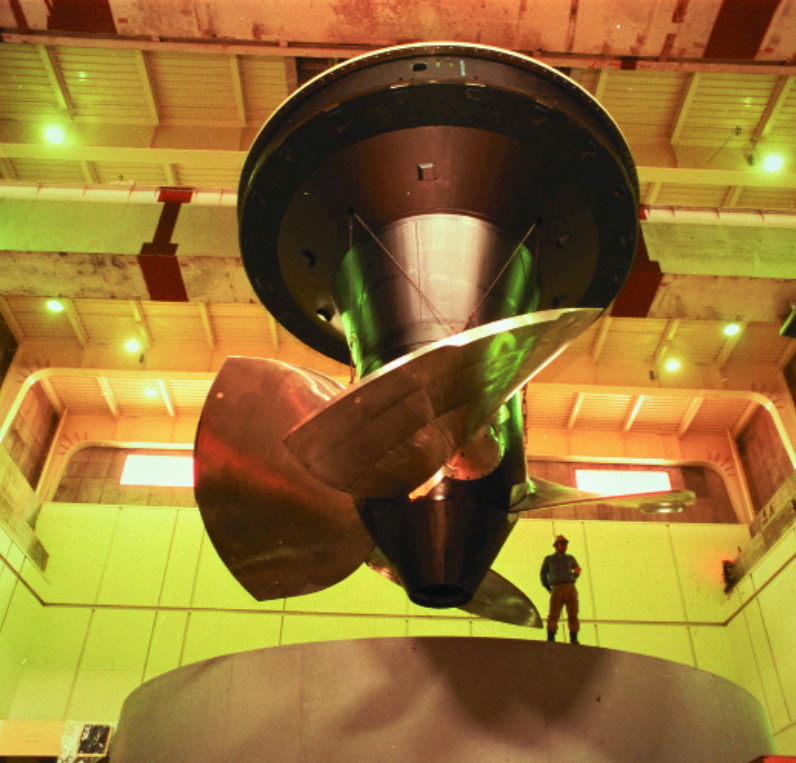
### **Applications**

- Industrial/Municipal water and wastewater
- 

### **Features**

- All Nema Rated Enclosures
  - IEC or Nema Starters
  - Separate alarm and control circuits
  - Build to Engineers Specifications
  - Build to Customers Specifications
  - Components are UL Listed
  - UL 508A Certified
  - UL 698A Certified
- 





**Contact information:**

**EBARA International Corporation  
Standard Pump Division**

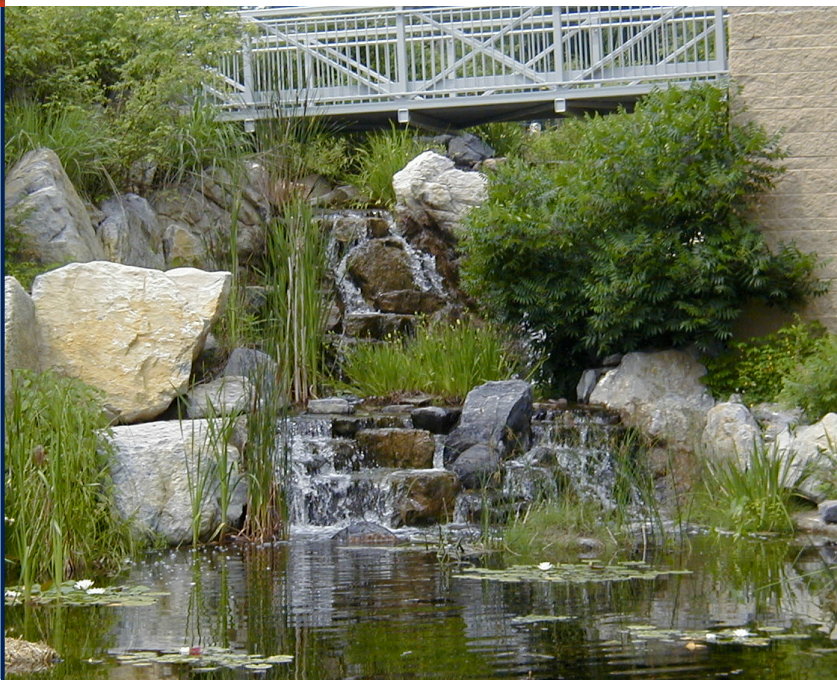
1651 Cedar Line Drive  
Rock Hill, SC 29730

t (803) 327 5005

f (803) 327 5097

[info@pumpsebara.com](mailto:info@pumpsebara.com)

[www.pumpsebara.com](http://www.pumpsebara.com)



**EBARA International Corporation**

Standard Pump Division

1651 Cedar Line Drive • Rock Hill, SC 29730 • (t) 803 327 5005 • (f) 803 327 5097

[info@pumpsebara.com](mailto:info@pumpsebara.com) • [www.pumpsebara.com](http://www.pumpsebara.com)

© 2000 EBARA International Corporation

EIC2000 1104