



## Kellogg Middle School - AUGUST 2015

### Principal's Corner:

Dear Kellogg Students, Parents, and Guardians:

Welcome to the 2015-2016 school year! On behalf of the entire Kellogg Middle School staff I'd like to welcome you to a new year at Kellogg. I hope your summer has been a great one and that you are looking forward to an awesome year of learning and growing!

It's been a busy summer here at Kellogg for me in my new role as principal of Kellogg. My family and I made the move here from Wisconsin July 1, and since then I've been spending as much time as possible getting to know the Kellogg Middle School community and working with staff to plan for a new year of teaching and learning. I feel extremely fortunate to be working with such dedicated, talented staff who are very clearly committed to helping all students find academic success, and I look forward to partnering with them – and with you – to ensure that your child feels welcome and safe here at Kellogg and that he or she is engaged, challenged, and supported as a learner.

As parents and guardians, you play such an important role in the school-home educational partnership and I'm always appreciative of any opportunity to collaborate with parents and guardians as we work to make your child's education the best it can be. My door is always open and I invite you to call, email, or simply stop in to discuss your child's learning or any matter related to Kellogg. I'm here to help!

We have some important dates in the coming weeks I'd like to share with you:

Thursday, August 27, Schedule Pick Up Day: 12:00-7:00 p.m.

Tuesday, September 1, 6<sup>th</sup> Grade Open House, 5:00-7:00 p.m.

Thursday, September 24, Kellogg Meet the Teacher Night (All Grades), 6:00 – 8:00 p.m.

Throughout the year, the Kellogg staff invites you to stay connected. Our Kellogg Middle School newsletter is emailed to you monthly or you can check it out online at: <http://kellogg.rochester.k12.mn.us/resources/newsletters> (please contact the Kellogg office if you prefer a paper copy); our school's website includes a wealth of information, including teacher contact info, resources for parents and guardians, and much, much more. You can check it out at: <http://kellogg.rochester.k12.mn.us> I also invite you to stay connected through Skyward, our online student information management system. You can also reach your child's teachers via email (usually the first two letters of the teacher's first name + last name + @rochester.k12.mn.us) or via phone (again, all teachers' contact info is available on our website). Parent teacher conferences are November 19.

Our first day of school is Tuesday, September 8. We'll begin greeting students at 7:15 and our first class begins at 7:40. I can't wait – and I hope you're excited too!

It's going to be a great year!

Eric Johnson  
Principal  
Kellogg Middle School  
[erjohnson1@rochester.k12.mn.us](mailto:erjohnson1@rochester.k12.mn.us)  
(507) 328--5817



# What You Can Do Before Schedule Pick-Up

- **Decide on a picture package**, if you choose to purchase one when your student's picture I.D. is taken.
- **Purchase items** on the generic supply list. **Please be aware that individual teams/teachers may require additional items to be purchased for your child.** The generic supply list is available in the newsletter, online, and at various large stores in Rochester, such as Walmart and Target.
- **Sign up online** at [www.paypams.com](http://www.paypams.com) to electronically deposit money into your child's lunch account. You will need your child's student I.D. number or lunch account number. Please contact Student Nutrition Services at 328-4218 if you don't know this information.

## Schedule Pick-Up

All – Schedule Pick Up

Thursday, August 27 | 12:00–7:00 PM

6th Grade Meet the Teacher

Tuesday, September 1 | 5:00–7:00 PM

All – Open House

Thursday, September 24 | Time TBD



## NOTICE TO PARENTS:

Rochester Independent School District # 535 **does not carry Student Accident Insurance to cover accidents and/or injuries of students that occur at school.** Coverage for injuries that occur at school are covered by the health insurance policies of parents.

If you do not have health insurance, and/or wish to purchase a student insurance policy, please contact your local insurance broker who will be able to assist you. If you wish to see if you qualify for the MinnesotaCare health program administered by the Department of Human Services, call (800) 657-3672 or visit their website at:

[www.dhs.state.mn.us/healthcare](http://www.dhs.state.mn.us/healthcare)  
MinnesotaCare is a publicly subsidized program for Minnesota residents who do not have access to affordable health care coverage.



## Team Assignments

Your student's **team color** and **advisor** will be printed at the top of the Confidential Enrollment Form, which you will get at Schedule Pick-Up. Please do not call the office to inquire about team assignments, as we will not be able to give out that information prior to Schedule Pick-Up.

**Thank you for your understanding.**

## School Pictures



**School pictures/student I.D.s will be taken during schedule pick-up on August 27th. You have the option to purchase a student picture package at that time.**

## Schedule Pick-up Checklist

(Please print a copy of this checklist to bring with on the day of schedule pick-up)

### Cafeteria:

- \_\_\_ Schedule, Planner, and Other Information
- \_\_\_ Lunch Account – deposit money into your account
- \_\_\_ Community Ed – extra-curricular opportunities
- \_\_\_ PTSA/ViE – join PTSA and find out about volunteer opportunities

### Gym 1:

- \_\_\_ School Picture – have school picture **taken and receive school ID**

### Other activities to complete:

- \_\_\_ Emergency Health Plan – update (if needed) and drop off medications (*health office*)

### Take home and review with your child:

- \_\_\_ Student handbook (inside planner)
- \_\_\_ Student schedule
- \_\_\_ District *Rights, Rules and Regulations* booklet

# Kellogg Middle School

## Recommended Supply List for 2015-2016

**INDIVIDUAL TEACHERS MAY SPECIFY ADDITIONAL  
SUPPLIES DURING THE FIRST WEEK OF SCHOOL**

**Backpacks will not be allowed in the classrooms.** Many of these supplies will need to be restocked throughout the year, so please check with your children periodically to be sure they have necessary supplies.

### GRADE 6

5	Spiral Notebooks (1 of each: Blue, Green, Yellow, Red, Purple, Wide-rule 1-subject)
5	Pocket Folders (same colors as notebooks) OR an accordion style folder system w/pockets
1	Scientific Calculator
1	12" Ruler w/metric measurements
2	Tissue Boxes (give to Advisory Teacher)
1	Pair of Scissors
1	Glue Stick
2	Highlighter Pens
Package	Black/Blue in pens
1-2	Red Pens for correcting
1	Package of Loose-leaf paper (wider-rule)
2	Dozen #2 pencils
1	Zippered pencil bag (no boxes)
Several	Erasers
1	Box of Colored Pencils
1	USB Flash Drive
1	Pair of earbuds (optional)
1	Binder

### GRADE 7

12	Spiral Notebooks (1-subject, assorted colors)
6	Pocket Folders (assorted colors)
1	Scientific Calculator
1	12" Ruler w/metric measurements
2	Tissue Boxes (give to Advisory Teacher)
1	Pair of Scissors
1	Glue Stick
2	Highlighter Pens
Package	Black/Blue in pens
1	Protractor
1	Package of Loose-leaf paper (Wide-lined)
2	Dozen #2 pencils
1	Zippered pencil bag (no boxes)
Several	Erasers
1	Box of Colored Pencils
1	USB Flash Drive
1	Pair of earbuds (optional)
1	Binder

### GRADE 8

10	Spiral Notebooks (1-subject, assorted colors)
5	Pocket Folders (assorted colors)
1	Scientific Calculator
1	12" Ruler w/metric measurements
2	Tissue Boxes (give to Advisory Teacher)
1	Pair of Scissors
1	Glue Stick
2	Highlighter Pens
Package	Black/Blue in pens
1	Package of graph paper
1	Package of Loose-leaf paper (Wide-lined)
2	Dozen #2 pencils
1	Zippered pencil bag (no boxes)
Several	Erasers
1	Box of Colored Pencils
1	USB Flash Drive
1	Pair of earbuds (optional)
1	Binder

**FREE SCHOOL SUPPLIES with Running Start from United Way!**

K-12 Olmsted County students who qualify for free or reduced school lunch will automatically receive a postcard in the mail 2 weeks prior to their school supply distribution days. The postcard is sent by the school district to all families who are eligible for free or reduced lunch benefits. The postcard is your "ticket" to receive free school supplies. Families must fill out the postcard and bring it with them to their designated distribution site.

# KELLOGG TESTING PROGRAM for 2015-2016

Kellogg's standardized testing program consists of the following assessments:

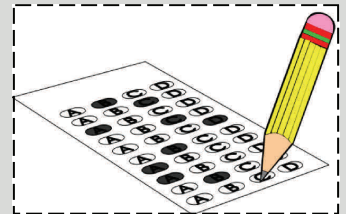
- The **Minnesota Comprehensive Assessment (MCA)** is given to all Kellogg students. It is a state accountability test that is given in the Spring.
- The **WIDA/ACCESS** test is a state test given to all students in the English Learner (EL) program and those students on EL monitor status. It is a state test which will be given in February and/or March.
- The **EXPLORE** test is a practice test for the ACT college admission test which is for 8<sup>th</sup> graders only. It will be given to 8<sup>th</sup> graders in November.
- The **NWEA Measures of Academic Progress (MAP)** test is given to all Kellogg students in the Fall and Spring.

The standardized tests listed above are scheduled during the school day and are free of charge. All standardized tests at Kellogg will be administered on computers except the EXPLORE test which is a paper and pencil test. More detailed information regarding each test will be provided in the Kellogg Newsletter in the month of or in the month preceding that test. Special test settings and circumstances may be granted to students on Individual Education Plans and 504 Plans.

## NWEA/MAP Test - September 14 to October 14

Kellogg will be giving the NWEA Measures of Academic Progress (MAP) tests in Mathematics and Reading this Fall. The MAP tests are required by the Rochester School District. These tests are free of charge and will be taken on computers.

For the Fall MAP administration, 6th, 7th and 8th grade Math and Language Arts/English classes will be scheduled to go to a computer lab for two consecutive days to take the MAP tests of the same subject.



## News from 7<sup>th</sup> grade:



The Silver and Blue Team teachers welcome you to 7<sup>th</sup> grade! It's going to be an amazing year and we can't wait to get started. Communication between home and school is crucial as parents and students adjust to 7<sup>th</sup> grade classes and procedures. Please check our individual teacher webpages (located on the Kellogg Middle

School website) regularly for daily class lesson plans, worksheets, links, and other information about class. There you will also find teacher email addresses and we highly encourage this method of communication. Check Skyward often for information about graded assignments and current grades in each class.



**Welcome to the 2015-2016 school year!**

## **YEARBOOK**

Kellogg Parents **be sure to order** your child's Kellogg Yearbook by Sept 18th for best price of the year!

The basic yearbook cost will be:

\$24.00 + Tax = **\$25.78**. Checks can be made out to **Jostens**. Please put your child's name in the memo line of the check.

Icons and personalization are an additional charge and can be ordered on Schedule Pickup Day.

The Yearbook forms will be in your child's folder.



**SAVE THE DATE**

**COMING  
UP**

**August 27th - Schedule Pick-up 12:00-7:00 p.m.**

**September 1st - 6th Grade Meet the Teacher 5:00-7:00 p.m.**

**September 8th - First Day Of School**

**September 10th - PTSA meeting 6:30-8:00 p.m.**

**September 18th - Immunization Clinic**

**September 24th - Meet the Teacher 6:00-8:00 p.m.**



## HEALTH FORMS & EMERGENCY CARE PLANS for 2015-16 School Year

Students requiring emergency care plan(s) and/or medication(s) that need to be given during school hours will need one or more of the following forms completed.

**All emergency care plans and medication authorizations need to be received prior to the beginning of the school year and renewed on an annual basis.**

### **ANAPHYLAXIS EMERGENCY CARE PLAN**

This form gives the school authorization to administer epinephrine (e.g. EpiPen, Auvi-Q) to a child during an anaphylactic reaction (life-threatening allergic reaction) during the school day. A Health Care Provider and a parent signature is required. This plan should be reviewed with the licensed school nurse.

### **DIETARY GUIDELINES: ALLERGIES & INTOLERANCES**

This form provides guidelines for managing a student's food allergy/intolerance to appropriate staff members (e.g. nursing, dietary, classroom teacher(s), special areas).

### **SEIZURE EMERGENCY CARE PLAN**

This form should be completed for students that have a seizure disorder. If an emergency medication is to be kept at school, the child's physician needs to complete the "Physician's authorization for emergency medication administration" section or provide a written order for the emergency medication to be administered during school hours, if needed.

### **DIABETES MEDICAL MANAGEMENT PLAN (DMMP)**

This form should be completed by the parent and reviewed with the Licensed School Nurse for a student with diabetes. An Authorization for Medication Administration Form or a written order signed by a physician for medications (e.g. insulin, glucagon) is also required. Parents are responsible to bring all diabetic supplies (e.g. test strips, meter, insulin, needles, syringe, glucagon, snacks, glucose tabs, ketone strips) to the health office prior to the beginning of the school year.

### **SCHOOL HEALTH INFORMATION FORM**

This form should be completed for all new students to Rochester Public Schools and those entering kindergarten, 3<sup>rd</sup>, 6<sup>th</sup>, and 9<sup>th</sup> grades to alert health staff of any health concerns and/or potential health emergencies that may require an emergency care plan at school.

### **AUTHORIZATION FOR ADMINISTRATION OF MEDICATION**

Complete this form if your child needs a medication given during school hours. A Health Care Provider's signature is required for all prescription medications and for over-the-counter medications exceeding package recommendations. More information about medication administration at school can be found under [Rochester Public Schools medication policy 516](#).

### **CONSENT TO RELEASE PRIVATE DATA**

Required for Rochester Public Schools to exchange information with your child's physician regarding their emergency care plan or medical condition/concern. This form is requested of all children with an emergency care plan or a medical condition/concern.

### **ASTHMA ACTION PLANS**

Asthma Action Plans need to be completed for students with asthma. This form will give authorization for asthma medications to be given at school. Asthma Action Plans can be requested from your Health Care Provider. It is electronically signed by a physician and is good for a year from the signature date.

## ACCESSING OUR HEALTH FORMS ONLINE\*

1. Go to [www.rochester.k12.mn.us](http://www.rochester.k12.mn.us); click on **STUDENT HEALTH SERVICES** under the **FAMILIES** tab
2. Click on **Health Forms**
3. Click on the specific health form you need



\*printed copies are available at your child's School Health Office

## CONTACTING YOUR CHILD'S LICENSED SCHOOL NURSE

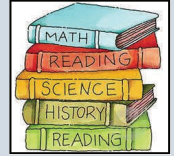
Your child's **Licensed School Nurse (LSN) contact information** can be found on the **STUDENT HEALTH SERVICES** webpage. Please contact your child's LSN with any questions or health concerns you have regarding your child's health condition(s) or medication(s) needed at school. LSNs are available during the end of August, prior to the start of the school year.





# Gifted Services News – August 2015

**Mission: Create an environment in which the full potential of the Gifted and Talented Learner is recognized, encouraged, and nurtured.**



Welcome to a new school year. I am looking forward to getting to know our sixth graders and renewing friendships with our seventh and eighth graders. Please be sure to peruse the abbreviated list of co-curricular activities and pick out a few activities that your student would like to participate in. Participation in co-curricular activities greatly enhances academic performance and satisfaction with school.

## Kellogg Co-curricular Activities

The activities listed below are some that have been offered in the past and are open to ALL students unless otherwise noted. Services are contingent upon student interest and the availability of parent/community mentors to facilitate the activities. Students should watch the Comet Capsule and read the Kellogg Newsletter to stay informed about these activities.

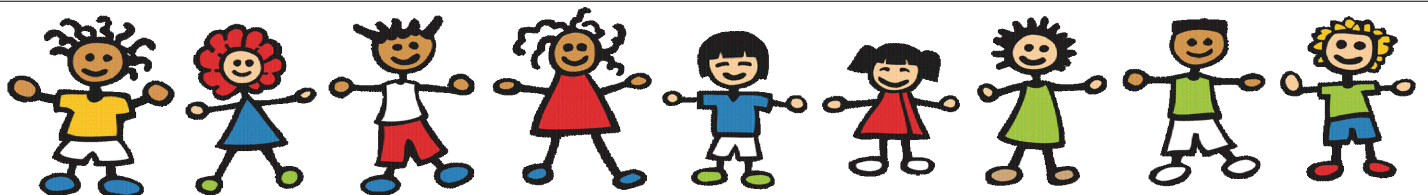
- **Chess Club** is very active at Kellogg and the season usually begins in late October-early November. Last year the members met at Century and practiced alongside the high school students. All students are welcome. More information will be coming soon.
- **Destination Imagination** is an international team creative problem solving competition for students in grades K – 12. Each team consists of 5 – 7 members and a parent team manager. The team meets on a weekly basis in order to solve a challenge problem and several instant challenges. Teams are formed in the fall. The regional event is held in Rochester in March and the state event is held in April in the Twin Cities. [www.destinationimagination.org](http://www.destinationimagination.org)
- **History Day** gives students an opportunity to research a topic related to an annual theme and present his/her research in the form of a display, media presentation, performance, or paper at a regional competition held in March. The state event is in May. [www.mnhs.org/school/historyday/](http://www.mnhs.org/school/historyday/).
- **Math Masters Challenge** is an academic competition for 6<sup>th</sup> grade students designed to promote critical thinking skills in mathematics. Students work in teams of five. Regional event: March [www.mathmastersmn.org](http://www.mathmastersmn.org)
- **Young Authors, Young Artists Conference** is an opportunity for students to delve into the art of writing and art by participating in a variety of breakout sessions led by professionals. This event occurs in November.

## FALL PLAY AUDITIONS

Auditions for Kellogg's fall musical play, "Cinderella" will take place the 2nd day of school! Yes! Singing Auditions will be held in the auditorium right after school on Wednesday, September 9th! Speaking auditions will be on the 10th, and callback auditions will be on Friday the 11th. Rehearsals will start the following week and continue until the week of performances, November 16th through the 20th. There are 4 daytime performances, Monday through Thursday, and one evening performance for the public on Friday, November 20th, at 7:00 p.m. There is a \$20 activity fee that the district charges for students who are in the play. This is due the first week of rehearsals. Please be able to list all conflicts such as sports and piano lessons which occur between 2:30 and 4:30 Monday through Friday.



**“The more that you read, the more things you will know. The more that you learn, the more places you’ll go.” -Dr. Seuss**



# KELLOGG MIDDLE SCHOOL BAND

## \*FREQUENTLY ASKED QUESTIONS\*

**Q: Which instruments are allowed in band in 6<sup>th</sup> grade?**

**A:** Band instruments in 6<sup>th</sup> grade typically include: Flute, Clarinet, Alto Saxophone, Trumpet or Cornet, French horn, Trombone, Baritone, and Percussion



**Q: Is it possible to play the guitar or piano in band?**

**A:** Generally, the answer is no. These instruments are not typical band instruments. There isn't anything wrong with choosing to play guitar or piano as they can be extremely rewarding. They just don't fit into band. At the 7<sup>th</sup> and 8<sup>th</sup> grade level, these instruments can perform with the jazz band. Jazz band is an afterschool activity with students that have one or more years of experience.

**Q: Does my child need any prior experience?**

**A:** No. Not any! We will teach them everything from the very beginning. All note reading, rhythm counting, and playing of instruments will be taught in detail from the opening of the case to playing a concert.

**Q: How long will my child need to practice?**

**A:** The frequency of practice is much more important than the duration of the practice session. A beginning band student who practices at home 4-5 times per week for 15-20 minutes will be much more successful than a student who practices twice a week for an hour.

**Q: How soon do we need an instrument?**

**A:** Students will not need their instruments the first week of school. Everyone should plan to have an instrument and supplies by Monday, September 8<sup>th</sup>.

**Q: Should we rent or buy an instrument:**

**A:** We suggest renting for the beginning band students to see how well your child likes the instrument and how well he/she progresses. Some parents opt to purchase a used instrument instead of renting. This is a financial decision and you are encouraged to research your options. Instruments may be rented or purchased through Rochester's local music stores: [Schmitt Music](#) (Route 52 North) or [Welhaven Music](#) (downtown on Broadway). Keep in mind when purchasing an instrument, the cheapest is not always the best choice.

**Q: Which Instruments can be rented through the school?**

**A:** These band instruments are available for 6<sup>th</sup> graders: French horn and Baritone  
The instruments that are available for 7<sup>th</sup> and 8<sup>th</sup> graders: Oboe, Bassoon, Bass Clarinet, Tenor Saxophone, Baritone Saxophone, French horn, Baritone, Tuba, and Percussion

**Q: What is the cost to rent an instrument from the school?**

**A:** As the district is realigning student fees in accordance with state statutes, there are necessary adjustments to the fee structure for the rental of district-owned musical instruments. The rental fee has not increased in many years: however, the costs to maintain and repair one instrument can range from \$50-200 yearly.

Fees for the **2015-2016** school year (Sept.-Aug.) will be: \$80.00 per year

\*If the student would like an instrument at home to practice (dependent on inventory), there will be a rental fee charged PER instrument. The second instrument fee will be 50% of the first instrument fee. For example, if you are using a French horn at school and take another French horn home to practice, the total cost would be \$120 for the 2015-2016 school year (Sept.-Aug.).

Scholarships are available for students qualify for Free/Reduced lunches.

**Q: May we use an old family/friend instrument?**

**A:** In many cases it may be to your advantage to use an old family-owned instrument for the initial year(s) of the band experience. We suggest you take the instrument to a local music store to make sure it is in good working condition. There is nothing more frustrating for a beginner than trying to progress on an instrument that does not work properly.

**Q: What is involved in playing percussion?**

**A:** When students think of percussion, they first think of drums. Playing drums is just one aspect of being a percussionist. In addition to the snare drum and bass drum, there is a whole list of instruments that percussionists must become familiar with. Sharing equal importance with drums are the keyboard instruments. The Xylophone, Marimba, and Orchestra Bells are pitched instruments played with mallets and require the students to know how to read notes. Drums only require the student to know rhythm notation; however, the keyboard instruments require the knowledge of pitches and how they are notated on the musical staff.

We have found over the years that most percussion students neglect the keyboard aspect of percussion. These instruments play an important role in the band program. Not surprisingly, the students who come into band having note reading skills (i.e. playing piano) have a major advantage over the other students. These students seem to take up drums and keyboards much quicker and easier.

**Q: May I purchase an instrument from a newspaper ad, garage sale, or online auction?**

**A:** It is possible to find good instrument buys from these sources. As with any purchase of this type, you are encouraged to use caution. Be sure the instrument is of good quality and in good working condition. Nothing is more frustrating for your child than trying to learn how to play an instrument that does not work properly or play in tune. Be sure to have the instrument checked over and put into good playing condition before the first day of band. As always, if you have questions, please contact the band director.

**Q: What supplies do my child need for band?**

**A:** All 6th Grade Band Students-pencil to keep in band folder or instrument case, planner, Kleenex, and Essential Elements 2000 Book 1 (A class set will be provided. You do NOT need to purchase this book!)

-**Flutes**-small cotton cloth

-**Clarinets and Saxophones**-four new #2 ½ reeds, reed guard, cork grease

-**Brass: Trumpet, French horn, and Trombone/Baritone**

-Valve oil, slide oil, and/or slide grease

-Mouthpiece brush

-Mouthpieces (see below)

-**French horn:** size Holton MC or MCD

-**Trumpet:** size 7C or 3C

-**Trombone/Baritone:** size 6 1/2 AL

-**Percussionists**

-Alfred Drum Method Book 1 (A class set provided. You do NOT need to purchase this book!)

-Percussion Kit: practice bells and drum pad

-#2B sticks

If you have questions, please feel free to email me, **Kim Kovar** at: [kikovar@rochester.k12.mn.us](mailto:kikovar@rochester.k12.mn.us)





## CHOIR INFORMATION



Dear Parents of 6<sup>th</sup> grade choir students,

First and foremost welcome to Kellogg middle school. My name is Mike Nadeau and I am your child's choir teacher this year. Students will need a very thin folder, a pencil, and a highlighter for choir. If any of you would like to donate a kleenex box that would be appreciated.

In choir our main focus will be singing, but students will also be learning how to read, label and sing music notes on the treble staff, count music rhythms mathematically correct, create a good tone with their voice along with pitch matching and learning how to sing the melodies and then sing with more than one part at the same time (harmony). We also learn a lot of music vocabulary and definitions which are mostly in Latin. Welcome and see you soon!

Dear parents with 7<sup>th</sup> or 8<sup>th</sup> grade choir students,

Welcome to Kellogg choir. Some students are returning, some students are brand new to choir and our school, and some students are new because they are coming out of band or orchestra. All choir students will need to bring a thin folder, a pencil and a highlighter to class the first week. We will be working on vocal techniques along with music vocabulary and it's applications. We will be learning and continuing reading and singing music on both the treble and bass staves, and continuing singing in unison, and multiple harmonies. Each student will be assigned a voice part and will be grouped together. We have sectionals with those particular voice parts every other day on a 4 part rotation where we can learn our part and continue learning harmonies and or melodies. We will also continue working on counting musical rhythms mathematically correct. We have traditionally had a winter and spring concert with dates yet to be determined. Welcome back and see you really soon!

-Mike Nadeau, Kellogg Choir Director



## PTSA NEWS August 2015

Can you believe summer is almost over? I can't! And there is much to be done before school starts by PTSA and its volunteers!

First, let me introduce myself. My name is Tracy Malm, and I am the 2015-2016 PTSA President. I have a 6<sup>th</sup> and 7<sup>th</sup> grader at Kellogg. I am hoping we can have a fun and successful PTSA this year! But, I need your help.

**Thursday, August 13, 2015 at 6:30 p.m.**

The first PTSA meeting is a "meet and greet" at Valentino's Pizza. This is a **GREAT** time to come and meet the current and new members of the PTSA! Come and learn what we are about, events the PTSA sponsors, ways you can help support the PTSA, or, just come to meet some other parents!

**Thursday, August 27, 2015 from 11:00 a.m. to 7:00 p.m.**

PTSA has a table at Schedule Pick-Up that needs volunteers! An **hour** of your time would go a long way! We need people to sit at the table to distribute and receive membership applications from those that are interested. So easy! Please sign up on Volunteer Spot at <http://vols.pt/4rK3Aw> or email me at [ptsakellogg@gmail.com](mailto:ptsakellogg@gmail.com)

All of our 2015-2016 PTSA meetings will be held the **2<sup>nd</sup> Thursday of the month at 6:30 p.m.** in the Kellogg Middle School Media Center. The meetings are casual, and **ALL** are welcome!

If you have **any** questions, or would like more information, please email me at [ptsakellogg@gmail.com](mailto:ptsakellogg@gmail.com)

The stronger Kellogg PTSA is - the better Kellogg Middle School can be!

**Kellogg Middle School PTSA is on Facebook! Like our page at Kellogg Middle School PTSA!**



## KELLOGG Middle School ViE/PTSA Volunteer Opportunities

Welcome to the 2015-2016 school year! Volunteers have a very important role in the education and enrichment of our students at Kellogg. We've written a short description of some of our volunteer opportunities at Kellogg and we hope you will take the time to complete the communications form. Remember, the most successful schools are those that have the highest parental involvement and support!

Please call or email if you have any questions! [ptsakellogg@gmail.com](mailto:ptsakellogg@gmail.com)

**Vision Screening** - Assist with vision screening.

**Library/Media Center** - Shelving books and covering books.

**Science Fair General Volunteer** - General volunteers will be assigned to help with tasks including project registration, door monitoring, information desks, greeters, awards ceremony support, and other tasks. No specific technical/scientific skills are needed for these positions. (February)

**Science Fair Judge** - A science background with an interest in working with students is needed. Judges will either judge paper presentations or projects. During paper presentations, students give a 15 minute oral presentation describing their work. Judges then have 5 minutes to ask questions. When judging projects, judges will judge the students' board display as well as have a brief interactive conversation with the student in order to understand their work. (February)

### Co-Curricular Activities (GATE)

**Destination Imagination** - An international team creative problem solving competition for students in grades K-12. Each team consists of 5-7 students and a parent team manager. Each team meets weekly and teams are formed in the fall. Competition takes place in March and April.

**Knowledge Masters Open** - Teams of students complete within their school using a computer disk of 200 multiple choice questions from 15 curriculum areas. [www.greatauk.org](http://www.greatauk.org)

**Math Masters** - Academic competition for 6<sup>th</sup> grade students designed to promote critical thinking skills in mathematics. Students work in teams for five. Regional event is in March.

**Math Counts** - Math Counts is a nationwide program that encourages students to pursue mathematics in high school and beyond. Students meet weekly from October through January to prepare for the regional event that takes place the first Saturday in February.

**Stock Market Game** - Teams of students learn the art and science of buying and selling stocks during this 10 week game. [www.smgww.org](http://www.smgww.org)

**Chess Club** - Coach students to learn to play chess through practice and tournament competition.

### PTSA Activities

**Fundraisers** - Help with various activities during fundraisers.

**8<sup>th</sup> Grade Celebration** - Help plan and run the 8<sup>th</sup> grade celebration. Generally the last day of school.

**Chaperoning Dances** - Attend student dances and chaperone. (Evenings)

**Cool Comet Store** - Work at the store that offers rewards for students' good behavior. Once a quarter during school hours.

**Bookfair** - Help at the bookfair. Twice a year in the fall and spring.

**Popcorn Days** - Pop popcorn at Kellogg during the morning and distribute during lunch, twice a year - fall and spring.

**Teacher Conference Meals & Treats** - Bring food on certain days for the teachers and staff, specifically conference evening meals.

**Teacher Appreciation Week** - Bring food for teachers and staff.

**Student Government Help** - Volunteer with various projects during the year if parent help is needed.

**Honor Roll Recognition** - Present certificates and rewards to honor roll students.

This is done quarterly during school lunches.

**Volunteers are always needed and appreciated!**



# 2015-2016 Pesticide and Herbicide Application Schedule

The Parents Right to Know Act of 2000 - M.S. 123B.575 - requires the district to provide a notice to parents and employees that it applies pesticide. It also requires us to provide an estimated schedule of applications for review or copying at sites.

## **Pest Management Service**

The District has contracted ECOLAB to provide integrated pest management services inside and outside of all District buildings. Friedell, John Adams, Kellogg, Willow Creek, Century, John Marshall and Mayo are inspected monthly with application limited to the days listed below as Group #1 & 2. Elementary and support buildings are inspected annually with application limited to the days listed below as Group #3. ECOLAB is on call to respond to all other pest problems encountered.

**SPECIAL NOTE:** The Minnesota Department of Health recognizes that the Health & Safety Coordinator may need to take action to control pests without prior notification, if life threatening situations occur. This is defined as a situation which poses an immediate threat to the health and safety to the people on district property.

Group #1 = Friedell, Kellogg, Mayo, Willow Creek

Group #2 = Century, John Adams, John Marshall

Group #3 = Elementary buildings, support buildings, and emergency/additional services needed for Group #1 & 2

<u>Month</u>	<u>Group #1</u>	<u>Group #2</u>	<u>Group #3 and Emergency/ Additional Services</u>
<u>September</u>	<u>9/3/15</u>	<u>9/4/15</u>	<u>9/18/15</u>
<u>October</u>	<u>10/1/15</u>	<u>10/2/15</u>	<u>10/23/15</u>
<u>November</u>	<u>11/5/15</u>	<u>11/5/15</u>	<u>11/27/15</u>
<u>December</u>	<u>12/3/15</u>	<u>12/4/15</u>	<u>12/18/15</u>
<u>January</u>	<u>1/7/16</u>	<u>1/8/16</u>	<u>1/22/16</u>
<u>February</u>	<u>2/4/16</u>	<u>2/5/16</u>	<u>2/19/16</u>
<u>March</u>	<u>3/4/16</u>	<u>3/5/16</u>	<u>3/19/16</u>
<u>April</u>	<u>4/1/16</u>	<u>4/2/16</u>	<u>4/23/16</u>
<u>May</u>	<u>5/6/16</u>	<u>5/7/16</u>	<u>5/21/16</u>
<u>June</u>	<u>6/3/16</u>	<u>6/4/16</u>	<u>6/18/16</u>
<u>July</u>	<u>7/8/16</u>	<u>7/9/16</u>	<u>7/23/16</u>
<u>August</u>	<u>8/5/16</u>	<u>8/6/16</u>	<u>8/20/16</u>

## **Weed Control**

Our goal is to limit chemical use by developing a healthy soil base to reduce weed populations which will provide a healthier lawn and reduce the use of pesticides and herbicides. Rochester Public Schools does not routinely apply chemicals to the grounds at our elementary schools, middle schools, and support buildings. Applications only take place on our three stadium sport fields at the high schools, and only after the grounds are vacated and secured from uses by the public. In the event of a special request by a site or state/city ordinance, RPS will hire a licensed applicator to apply weed control on a weekend or time when the grounds will not be occupied!

Please call 507-328-4507 with questions



## Online Resources

**Family Access via Skyward** users can access their child's grades, absences, disciplinary actions, and more!

**PayPams.com** allows you to put money in your child's lunch account via the internet. You can set up automatic deductions or you can choose to have an email notification sent to your email address when your child's lunch account falls below a certain level.

Check out the **Kellogg website**,

<http://kellogg.rochester.k12.mn.us/>, for information and news about our school.



## From the Counseling Office

### How to request homework for your ill student...

If your student has been absent for 3 or more days we ask that you please check Skyward for assignments he/she may have missed. If you have further questions about a particular class please email that specific classroom teacher.



## From the Health Office

We recommend ill children remain at home if they have the following conditions:

- Severe cold, cough or sore throat
- Eye infection, especially if discharge is present
- New skin rashes, especially if draining, unless medical opinion states rash is non-communicable
- Temperature of 101° or more, with or without additional symptoms
- Nausea, vomiting, diarrhea, or abdominal pain
- Until result of throat culture is known
- Any other sign of acute illness



Children may return to school when they are:

- Free of symptoms, have a normal temperature for 24 hours, and/or have been on an antibiotic for 24 hours

## Electronic Device Policy

### Cell phones, pagers, portable CD, MP3, iPods, iPads

The above mentioned electronic devices can be used by students before and after school in the main lobby and during the students lunch hour. Electronic devices are not to be used during class time unless specifically approved by the teacher for educational reasons. The school and school district will not assume responsibility for lost or stolen devices. Taking pictures is prohibited unless specific authorization is given to the students by the building administration. Electronic devices which are used in violation of the school or district policies will be confiscated from the student and parents will be asked to pick them up.



## Food for Thought...

**A winner is a dreamer who NEVER gives up!**

