

# GRACE LUTHERAN COLLEGE NEWSLETTER



GRACE  
LUTHERAN  
COLLEGE  
EST. 1978

Thursday November 25  
Issue Number 37

“For it is by God’s grace that you have been saved through faith. It is not your own doing, but God’s gift.” Ephesians 2:8

## INSIDE THIS ISSUE

### FROM THE PRINCIPAL’S DESK

2	Languages Pastor’s Pen Presents
3	Community Notices Lifestyle Technolo- gies
4	Caboolture Connec- tion
5	Financial Policies in relation to Fees 2011
6	Fees Schedule 2011
7	VET Department
8	Retail Centre Science Department
9	Careers Interact Report QSA Message
10	English Department Performing Arts
11	Sports News
12	Sports News

#### CHRISTMAS BLESSINGS AND FAREWELLS

I would like to take this opportunity to thank members of the Grace community for your welcome and support during the year. I am privileged to be able to serve here. I pray that God will richly bless you all during the Christmas and holiday seasons and refresh you for the new year. Farewell to students who will be leaving us at the end of the year, especially our graduates from Year 12 – grace and peace to you.

A special farewell to members of staff who are leaving us including these long-serving and major contributors to the Grace community:

Mr Murray Eilola, Deputy Principal, for 31 years  
Mrs Gail Symons, Dean of Students nearly 30 years

Mrs Lorraine Eilola, Finance Office for 29 years  
Mr Jerry Smith, Year 7 teacher and former Principal after 43 years service to Lutheran Education.

Well done, good and faithful servants.

Other staff leaving at the end of 2010 are:

Jeanette Baird (teacher) - completion of contract  
Linda Barry (support staff)

Juliet Beattie (teacher)

Amber Biggs (teacher)

Melissa Hedges (teacher) - completion of contract

Jessamyn Johnson (support staff)

Carolyn Moes (support staff)

Maree Pukallus (support staff)

Rowena Richards (teacher) - completion of contract

Russell Williams (teacher) - completion of contract

Sarah Wicham (teacher)

#### TESTING TIME

At this time of year our students and staff are fully involved in testing – of an academic kind. But we are also involved in another kind of testing – of our patience, persistence and courage. The busier our lives are and the more challenging, the more we have to draw on the resources of our character and our God. Thank you to

all, regardless of your test results or the success of your teaching, who still have a positive, cheerful spirit and who put themselves out to help others in this stressful time. “It’s not what is done, but how you do it” that counts most.

#### MIDDLE SCHOOL DEVELOPMENTS

In 2011, our Middle School students will benefit from an increased focus on their academic and pastoral needs due to some restructuring of staff and room allocations. Lengthy consultations involving staff, students, parents and College Council have resulted in a “Grace way” model for Middle Schooling that combines, we believe, the best elements of middle schooling with a focus on the specific needs of young adolescents. In our model students can feel supported by staff members who know them well, while a rigorous curriculum is followed across the entire secondary school. Masterplanning for the Caboolture campus will also be aligned with this model.

In summary these developments are designed to ensure that students particularly in Year 7 and 8 have a clear “home base” where they belong (in the F and D block areas) that still enables them to interact with older students. (This was a clear desire expressed by most students surveyed at Grace.) Students in Year 8 will now have core teachers who know them and their learning needs well (similar to the successful Year 7 model). Year 8 Core teachers will be located in staff rooms that allow them to have curriculum and pastoral conversations with other teachers of their core subject areas (English/Social Education and Maths/Science). Most will still teach in the Senior School so they remain in contact with the requirements of students later on in the school. I would like to thank staff for their co-operation while these changes were being developed and implemented.

To support our focus on Middle Schooling the following appointments have been made: Head of Middle School (Mrs Nicole Gregory – previously announced)

Cont’d on Page 2....

## FROM THE PRINCIPAL'S DESK CONTINUED

Dean of Curriculum and Academic Progress (Mr Malcolm Carter – previously announced. Mr Carter has a focus on Middle School curriculum and ensuring students progress effectively from Years 7-12)

Assistant Head of Caboolture Campus, Pastoral Care with a focus on the Middle School – Mr David Swindells

Academic Enrichment Coordinator – Mr Sam Ayres (with a focus on Gifted and Talented education)

Middle School Coordinator of English/Social Education - Mrs Shona Hides

Middle School Coordinator of Christian Studies – Mrs Gaye Ruthenberg

Middle School Coordinator of Science – Mr Peter Smith

Middle School Coordinator of Physical Education (Acting) – Mrs Kristy Sanford

## CONGRATULATIONS

Congratulations to the following students:

Girls Middle School Captain

Amy West

Boys Middle School Captain

Reilly Brown

Academic Captains

Christie Dijkstra

Lachlan Healey

Spiritual Captains

Bradley Griffiths

Katherine Vacca

Performing Arts Captains

Codie Ellis

Luke Woollett

## Creative Industries

Captain

Nicole Clowes

Vice Captains

Taylor-Jo Connolly

Marnie Buchecker

Student Rep Council

Chairperson

Madeline Gould

Mrs Ruth Butler

## LANGUAGES

### Senior German short film

In Term 2, Year 11 and 12 German students created a short film for the annual German School Film Festival, organised by the Goethe Institut. The students wrote, produced and edited the film in German, which had to be connected in some way with the theme: *Alles im grünen Bereich*. This was a play on words, having a colloquial meaning of *It's all good* but alluding to our green planet with its literal meaning of *Everything in the green zone*, suiting our 'environment' theme for Term 2. Entries were only judged over the Term 3 holidays and the screenings of the short listed films occurred at the end of October. Although Grace's entry did not win a place, the students are to be commended for their efforts in bringing their academic topic to life through film. This week, the College received a consolation prize and a certificate (pictured). The

book *Klimawandel* (Climate Change) will be a welcome resource for the seniors of the future. Congratulations to all the students involved in this project: Adam Cramp, Stevie Fredric, Liam Gallagher, Alexander Hitchings (Year 12) and Elizabeth Bennett, Emma Killey and Callan Lowrie (Year 11).



### Germany Study Tour 2011

A reminder to start saving, as the confirmed itinerary and applications for the tour will be out in the new school year. Deposits will need to be received as soon as possible at that time. Please direct any enquiries to Mr Ken Hutchinson, Head of Languages.

## PASTOR'S PEN PRESENTS

### The First and the Last"

According to research at an Elingsh uinervtisy, it deosn't mttar in what oredr the lttrees in a wrod are, the olny jprmoetnt tihng is taht the frist and lsat ltteer is at the rghit plcae. The rset can be toatl mses and you can slitl raed it wouthit a porlbem. Tih is bcuseae we do not raed ervey lteter by istlef, but the wrod as a wlohe.

How did you go with that paragraph? (It was murder for the typist!) I was feeling quite pleased with myself for how well I coped with it, until I read that it is not difficult to read as long as the first and last letters are in place.

In the book of Revelation, Jesus describes himself as "the Alpha and the Omega" (Rev22:13). We actually have these letters from the Greek alphabet on the front of the altar of the chapel. 'Alpha' is the first letter of the alphabet, and 'Omega' the last. So Jesus claims that he was there at the very beginning of everything, and that he will be there at the end, when this world's time is over.

Perhaps another idea can be drawn from the opening paragraph: as long as we know where we have come from—created by God—and where we are going to end up—with him and his people in heaven—then we can cope with every-

thing in between, even though it's a mess.

When I open a street directory (not possessing a GPS) in order to find how to get to a place, I need to know its location. That's my goal, where I went to end up. But it is equally important to know where I am at present. Knowing the goal is vital, but it doesn't matter if you don't know from where you are starting. With both pieces of information, I can work out how to get to my destination.

Thus it is important to know where you are headed in life. It might be appeal for some to take the scenic 'whatever' route, and to wander around in aimless directions, but eventually it is in our nature, I believe, to need a destination. Similarly we have a need to know where we have come from. A random chance collision of atoms over aeons doesn't tell us much. Where have we come from? ... Where are we going to? ... When you know Jesus, it hlpes you to mkae snese of waht is ibneetwen. Ceerih!

Maehcil Jicark, Sochol Potsar

## COMMUNITY NOTICES

**DISCIPLES WITHOUT BORDERS(DWB)**  
DWB is an extreme camping experience for those with a yearning to hear and respond to God's heart for the poor and marginalised.

When: 13-17th December

Year 9-12 Co-Ed

Camp Tamborine

Cost \$190 Register at [www.suqld.org.au/camps](http://www.suqld.org.au/camps) or email [ymis@suqld.org.au](mailto:ymis@suqld.org.au) for more information

## REEF CLUB

(READ AND EXAMINE ENTERTAINING FICTION)



**Hi there, to all you Middle School Readers** If you would like to join a bookclub then here is your chance. The REEF bookclub is signing up members now for next year. There will be prizes to win, fun activities to participate in and lots of fabulous books to explore. Please see Mrs Galla in the library

## LIFESTYLE TECHNOLOGIES

Student of the Week

**Kate Victory** Year 11 Senior Home Ec and Louise Dayhew Year 9 Food Studies  
Awarded for....

Kate, your enthusiasm, courtesy and positive attitude in your Senior Home Economics class

Louise your thoughtfulness and your meticulous detail to your practical cooking task.

Well done Louise!

In the last two weeks the Year 9 Food Studies students doing the unit 'Focus on Hospitality' prepared a cupcake morning tea for invited staff members. The students have learnt a range of different types of icing and decorating techniques and all produced many varieties of designs and colours. All staff who attended were impressed on the high standard displayed. Thank you Year 9 students for your enthusiasm and participation in this function.



## Redcliffe Hospital Foundation Computer Sale

*Ideal for Students*

- HP Compaq
  - Pentium 4
  - 3 GHz CPU
  - 1 GBz RAM
  - 40 GBz HDD
  - DVD Burner
  - Microsoft Windows Professional loaded
  - Open Office installed
- 3 month warranty  
**\$200**

Sale Closes on 23<sup>rd</sup> December 2010

Contact Ashleigh on: 07 3883 7105

## GRACE LUTHERAN CHURCH ADVENT DINNER



**ADVENT**

*The members of the Grace Lutheran Church would like to invite members of the Community of Grace to join*

*them for an evening of Christmas Carols, worship & fellowship on **Saturday 11th December at 6pm in the Church Hall, Maine Rd, Clontarf.***

*Each family is asked to bring a plate of food to share.*

*This is a wonderful event to join in celebrating this wonderful time of year, and a way to meet other families.*

**RSVP to Danielle Robinson in the Grace Church office on 3883 1144, or email [church@glps.qld.edu.au](mailto:church@glps.qld.edu.au) before 8th December.**

## LOST PROPERTY

**There is an abundance of Lost Property – my cupboard yet again overfloweth!!!!**

Please encourage your student to visit Lost Property in D3 either before school, at the beginning of lunch, or after school each day to be re-united with their belongings. Please also feel free to visit or call Carolyn on 32030066 xtn 294.

Lost property is housed in D3 behind the Middle School office. It will be open after the Closing Services on both Wednesday 1 Dec and Thursday 2 Dec for parents and students to browse. After Friday 3 December, all unclaimed items will be donated to a local charity. Items of Grace clothing will be donated back to the Retail Centre to be sold.

## Rothwell Campus

Anzac Avenue

Rothwell Qld 4022

PO Box 3181

Clontarf DC Qld 4019

**Telephone:** 07 3203 0066

**Facsimile:** 07 3897 2188

**Email:** [grace@glc.qld.edu.au](mailto:grace@glc.qld.edu.au)

## Caboolture Campus

129 Toohey St

Caboolture Qld 4510

PO Box 1424,

Caboolture Qld 4510

**Telephone:** 07 5495 2444

**Facsimile:** 07 5495 1779

**Email:** [enquiries\\_cc@glc.qld.edu.au](mailto:enquiries_cc@glc.qld.edu.au)

**Web:** [www.glc.qld.edu.au](http://www.glc.qld.edu.au)

CRICOS Provider No 00497C

## Principal

Mrs Ruth Butler

## Deputy Principal

Mr Murray Eilola

## Head of Caboolture

**Campus:** Mr Allan Dallas

## School Pastor:

Pastor Michael Jarick

## Chaplain:

Mr Colin Palmer

## Youth Chaplain:

Esther Harding

## Dean of Studies:

Mrs Cheryl Budd

## Dean of Students:

Mrs Gail Symons

## Dean of Middle School -

## Pastoral Care:

Mrs Tanya Crooks

## Dean of Middle School -

## Academic:

Mr Malcolm Carter

## Business Manager:

Mr Ray McKinnon

## Absentee SMS Number:

**0427 016268 or**

**Student Absentee Line: (Rothwell) - 3897 2183**

## Student Absentee Line:

**(Caboolture) - 5428 9445**

**Tuckshop:** 3897 2133

## Retail Centre Hours: (Uniforms and Books)

Monday to Friday:

7.45am-10.30am

Wednesday & Thursday:

2.30pm - 3.15pm

**Phone: 3897 2138**

## Grace Swimming Club:

**Phone: 3204 2725**

Monday to Friday:

9.00am - 5.30pm

Saturday: 8.00am - 12.30pm

## P & F President:

**Mr David Close**

[pandfpresident@glc.qld.edu.au](mailto:pandfpresident@glc.qld.edu.au)

0419 021 308

## Lutheran Church of

## Australia Abuse Line:

**Phone:** 1800 644 628 (Toll free)

[report.abuse@safeplace.lca.org.au](mailto:report.abuse@safeplace.lca.org.au)



## From the Head of Caboolture Campus College Entry—Stop Sign

It has been brought to my attention by local pedestrians and cyclists that a number of our College community are disregarding the stop sign at the entry to the school on Toohey Street.

The stop sign has been positioned in such a way that vehicles leaving our school are required to stop and give way before crossing cycle /pedestrian paths and entering Toohey street. Please note that the invert from Toohey street which appears to be the college driveway, and extends to where the fenced bin area is located, is actually a designated street. The Moreton Bay Regional Council owns an area of approximately 1/2 acre from the street, across the rail reserve and across the eastern end of our carpark. The stop sign is not just advisory, therefore, should the local police decide to set up at the gate, they would legally be able to fine anyone disregarding the stop sign. We are trying to develop safe and sustainable travel within our community and are members of the TravelSmart Initiative. In doing so we encourage everyone to be aware of road and cycleway/pedestrianway users.

## Christmas Dinner



With the success of our first "Christmas Dinner Assessment", our year 10 Hospitality Students have set the bar high for those who'll follow in their footsteps. I was swamped with compliments for Liam Graham's formal conduct on the night (he acted as Maitre' d, or 'head waiter'), staff from both campuses really appreciated his attention and input and thought the formal feel of the service staff really complemented everything else on the night.

Everyone, kitchen and front of house combined to make a superb inaugural event. I have attended student managed events at 3 of our Colleges, usually conducted by senior students, and Judy Barnes, Lorelle Stiller and their team could hold their heads high in that company.

Thank you everyone involved, you are to be commended on a truly outstanding effort.



## Local Elections

We are delighted to announce the Middle School Captains for 2011 are, Tess Emmerson and Chase Taylor. Last week our Campus Middle School House Captains were elected. They are, Antares—Matt Wilton and Laine Crocombe Orion—Joaquin Smith and Rachel Kotzur

Pegasus—Harrison Moore and Ellie Cutler Phoenix—Liam Tozer and Chloe Winstanley Congratulations to all of our captains for 2011.

## Murals for St Paul's Aged Care

In late 2009 Patricia Landers (General Manager of St Pauls Lutheran Aged Care Facility), wrote a letter to the Caboolture Campus asking if the students would be interested in creating some murals for the outside space of their Alzheimer's unit, as Alzheimer's Australia had advised that colour and variety would be beneficial to the residents. I, as the art teacher at the school, received the letter and thought it would be a great co-curricular project for the students, enabling them to engage with the wider community as well as furthering their design, colour and team working skills. It was an ambitious project, taking the whole year to complete over lunchtimes and some after school time. Ten large panel murals were created from original designs to the theme of 'gardens'. Ms Landers and I felt this would be an apt theme, as the installation location would be a garden, and a variety of gardens could be depicted, catering to the wide range of experiences and memories of the residents. On Monday morning the murals were unveiled to the residents and 4 of the students were able to attend and see results and impact of their year's work. The students: Megan Munro-Gordon, Breeanna Gardner, Annelise Dopking and Alexandra Heeps had a great morning interacting with the residents before the unveiling and during a special thank you morning tea.



## Around the Grounds...

### Our artificial turf

The artificial turf in the quadrangle is now complete and provides a soft surface for students and a pleasing effect for our eye.. Students are already availing it as a soft seating option.

### Tuckshop

You can never have too many volunteers. While you're beginning to organise next year's calendar and diaries, see if you can spare 1 day a month or just a couple of hours here and there, and then please email or phone Tess Roesler on the details below:

tessroesler@gmail.com or 5497 7309.

### Secondhand Books and Uniforms

If you are selling books and uniforms this year please call at Reception to collect the paperwork which needs to accompany any items for sale.

### Sale Day at Rothwell

The Caboolture Campus will not be having a 'Sale Day' this year for secondhand uniforms and textbooks. The regular 'Sale Day' will run at Rothwell as in previous years. It will be held on Saturday December 4th, Books 7:30 - 11:00 am, 2nd hand uniforms 8:00 - 11:30am and new uniforms 8:30 - 12:00. It's a big day/morning so get there early (good warm-up or training for the 'Boxing Day sales...') to get some bargains.

### Office Hours over the Christmas Holidays

Our office will be closed from Monday 13th December and reopen on Monday 10th January 2011. Wishing you all a safe and blessed Christmas

Anzac Avenue Rothwell  
 P O Box 3181 Clontarf DC QLD 4019  
 Phone (07)32030066 Fax (07) 38972188  
 Email: grace@glc.qld.edu.au



## School Fees at Grace College

At Grace we are pleased to be able to offer an inclusive, affordable education that meets the needs of a wider range of young people and families. It is a significant investment in a child's future. While we try to keep fees as low as possible, we recognise that for some families, there is sacrifice and the College Council seeks to support families who are experiencing hardship.

### Payment of School Fees

A 4% discount will be granted to parents who pay the full year's school fees by the due date set out on the 2011 Fees Schedule. Unless a prior arrangement has been made with the Principal or Business Manager, school fees are due and payable for each term on the dates set out on the 2011 Fees Schedule.

Parents experiencing financial hardship are invited to contact the Finance Office regarding the possibility of a means-tested payment plan.

### Withdrawal of a Student

When a student is to be withdrawn from the College, parents are required to give the Principal 90 days' notice, in writing, before the withdrawal date. In the event of such notice not being given, fees for the following term become due and payable.

### Building Fund Donation

Parents are invited to make a tax-deductible donation to the Grace Lutheran College's Building Fund. Please contact the Finance Office for further details.

### Googa Outdoor Education Levy

The Googa Outdoor Education levy contributes to the costs of board and lodging at the Googa Outdoor Education Centre. The levy is charged in addition to tuition fees. Par-

ents of Year 10 students are charged the Googa Levy in 4 equal instalments.

### Enrolment Application Fee

A non-refundable enrolment application fee is payable for each child being enrolled to the College upon submission of an Enrolment Application. The fee covers administration costs in processing the application.

### Enrolment Confirmation Fee

When a place is offered, parents are required to sign an Enrolment Agreement and pay for each newly enrolled student a non-refundable Enrolment Confirmation Fee, which confirms the place for the student.

### Additional Charges

Additional charges may apply throughout the year for special activities such as music fees, excursions, subject activities and tours. The College endeavours to keep these charges to a minimum.

### Goods & Services Tax (GST)

Goods & Services Tax (GST) on prescribed taxable supplies is required to be added to applicable fees and charges in accordance with current Australian Taxation Office rulings.

### Unpaid Fees

If fees remain unpaid for an extended period the ongoing enrolment of a student may be jeopardised. Where the enrolment is discontinued, the unpaid fees will still be a debt due and owing to the College.

#### Further Information

*Please contact:*

Mrs Jan Martin

Email: jan\_martin@glc.qld.edu.au

or

Mrs Kathy Carseldine

Email: kathy\_carseldine@glc.qld.edu.au

Phone 07 3203 0066



### GRACE BUSES

Any students who will be using Grace Buses 2011 and have not received a **Bus Application Form for 2011** please contact the Finance Department. These forms need to be completed as soon as possible so that numbers can be finalized and passes organised ready for the beginning of 2011.

### KANGAROO BUS LINES NOTICE 2011 SCHOOL BUS PASSES

Kangaroo Bus Lines would like to advise that students who currently have a bus pass will need to collect a new 2011 bus pass to be able to travel on school bus services. Passes can only be collected from our office at 382 Morayfield Road, Morayfield from Tuesday January 4th 2011. Bus passes will **NOT** be up for collection from your Bus Driver. Should you require any further information, please contact our school transport division.

ATTENTION ANY PARENTS OF STUDENTS LIVING IN **EAST BURPENGARY** THAT UTILISE KANGAROO BUS 34, STOP: CORNER OF BUCKLEY RD AND CAMERON ST

We have been advised by a parent of the school that Translink would be willing to divert their route further down Uhlmann Road if they were to receive enough enquiries from parents. If interested parents could contact Translink on 13 12 30, they may travel further down Uhlmann Road turning at Farry Road or Fleet Street.

## 2011 Fees Schedule

Annual Fees & Charges	Year 7	Year 8	Year 9	Year 10	Year 11	Year 12
Tuition Fees	5,860.00	6,240.00	6,240.00	6,240.00	6,240.00	6,240.00
Text Book Allowance - credit		(106.00)	(106.00)	(106.00)	(233.00)	(233.00)
Bible	25.00					
College Magazine	35.00	35.00	35.00	35.00	35.00	35.00
Maths Software	15.00	15.00	15.00	15.00	15.00	15.00
School Photos	27.00	27.00	27.00	27.00	27.00	27.00
Student Insurance	10.00	10.00	10.00	10.00	10.00	10.00
Photocopy/Printing	25.00	25.00	25.00	25.00	25.00	25.00
Recreational Sports		45.00	45.00	55.00	45.00	
Year 7 Camp	250.00					
German/Japanese Incursion	14.00					
Performing Arts	10.00					
Textile Materials	7.00					
Year 8 Camp		252.00				
CK Excursion/Retreat			15.00			
Forensic Science Workshop			9.50			
Soc.Sc. Exc. Abbey Museum			13.50			
Outdoor Education - Googa				800.00		
Pastoral Care				20.00	20.00	20.00
Sexuality Incursion				17.00		
PE Golf					18.00	
QCS Workbook						22.00
Recreational P.Ed.						18.00
Year 12 Orientation						60.00
<b>Total Annual Fees &amp; Charges</b>						
1 <sup>st</sup> Student	6,278.00	6,543.00	6,329.00	7,138.00	6,202.00	6,239.00
2 <sup>nd</sup> Student with 10% Family Discount	5,692.00	5,919.00	5,705.00	6,514.00	5,578.00	5,615.00
3 <sup>rd</sup> Student with 30% Family Discount	4,520.00	4,671.00	4,457.00	5,266.00	4,330.00	4,367.00
<b>Full Year's Fees with 4% Discount</b>						
1 <sup>st</sup> Student	6,043.60	6,293.40	6,079.40	6,888.40	5,952.40	5,989.40
2 <sup>nd</sup> Student with 10% Family Discount	5,481.04	5,694.36	5,480.36	6,289.36	5,353.36	5,390.36
3 <sup>rd</sup> Student with 30% Family Discount	4,355.92	4,496.28	4,282.28	5,091.28	4,155.28	4,192.28

For families with more than one student, please note that the "1<sup>st</sup> Student" will be the eldest in the family.

New Students in Years 8, 9 & 10 - an additional \$25.00 will be charged for a Bible.

Year 12 Students - Senior Retreat and the Senior Formal will be charged in Terms 3 & 4 respectively.

Additional Charges associated with Excursions and other activities will be charged in the term in which they are incurred.

For students who are full time users travelling on Grace College Buses, the Charges are as follows:

Bribie run from Caboolture Campus:	1 <sup>st</sup> user = \$250.00 per term	2 <sup>nd</sup> user = \$212.50 per term.
Bribie run from Rothwell Campus:	1 <sup>st</sup> user = \$330.00 per term	2 <sup>nd</sup> user = \$280.00 per term.
All other runs from Rothwell Campus:	1 <sup>st</sup> user = \$270.00 per term	2 <sup>nd</sup> user = \$229.50 per term.

### Due Dates for Payment of Fees and Charges

Full Year's Fees (to qualify for 4% discount)

Monday

24 January 2011

Term 1 Fees and Charges

Monday

24 January 2011

Term 2 Fees and Charges

Wednesday

27 April 2011

Term 3 Fees and Charges

Monday

11 July 2011

Term 4 Fees and Charges

Monday

3 October 2011



## VOCATIONAL EDUCATION AND TRAINING DEP'T

Ms Jones, Mrs Mazlin, Mrs Crudginton, Mrs Cawood & Mrs Allt

Jingle Bells, Jingle Bells, Jingle all the Way...Christmas in Australia on a Scorching Summer's day! Yes, it's that time of year again.....time to unwind with family and friends and contemplate the year that has flown by so fast!

Here are the final Congratulations for 2010!

We in the VET Dept are very proud of all the students who have done the school proud with their behaviour and achievements while being out on work experience, and to all of the students who've been signed into Apprenticeship or Traineeship. How many I hear you ask? 92 students with a School-based Apprenticeship or Traineeship, 113 Students went out for work experience, and 61 Students are enrolled in a TAFE course. Wow! How outstanding are the students here at Grace!

Let's end this year on a high note with some highlights of 2010!

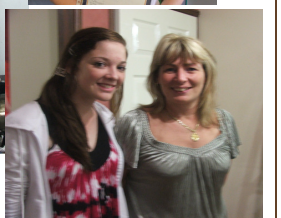
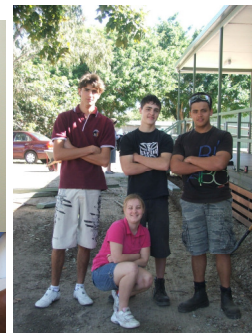
Congratulations to Blake Lunt who has been signed into a School-based Apprenticeship with Platinum Build. Well done Blake!



Congratulations to Joshua Willshire who has been signed into a Horticulture School-based Traineeship with Aspley East Primary School. Well done Joshua!



We would like to wish all students and their families a very Merry Christmas and a Happy & Safe New Year!



## HOLIDAY TENNIS CLINIC

REDCLIFFE TENNIS ACADEMY  
CHRISTMAS HOLIDAY TENNIS CLINIC

**Where:** The New Redcliffe Tennis Centre on the corner of Oxley and Portwood St

**When:** Camp One: December 15-17  
Camp Two: December 20-22

**Times:** 8.30-12.00 each day **Cost:** \$80 for 3 days, or \$30 for 1 day

A great chance for the kids to stay active and learn tennis skills in a fun, positive environment over the holidays! For bookings and enquiries please call Brad Clews 3284 2349 or 0415454347



**THE ANNUAL SATURDAY TRADING DAY**  
**SATURDAY 4<sup>TH</sup> DECEMBER 2010**

The Annual Saturday Trading Day is co-ordinated by the P&F Association as a service to students and parents and as a means of raising funds for the School. This is an opportunity to purchase Second Hand Uniforms and Secondhand Books (sold on consignment). New Uniforms are also available for purchase on this day. Items will be available in the following areas:

ITEM	AREA	TIME
Second Hand Books	E Block	7.30am – 11.00am
Second Hand Uniforms	V Block	7.30am – 11.30am
New Uniforms	Retail Centre	7.30am – 11.30pm

Please understand that this is an extremely busy day with some waiting involved and your patience is appreciated. New Uniforms, Secondhand Uniforms and Secondhand Books purchased on the day can be paid for in the following manner:

- Cash
- Cheque (subject to clearing)
- Eftpos

Credit Card (excluding Diners Club and American Express)

Please be aware that there are a limited number of Eftpos machines available and although we endeavour to process your purchases as quickly as possible, there is some waiting involved. Cash lines are substantially smaller, so perhaps visiting a Teller Machine prior to arriving may be a time saving measure.

The Retail Centre will then close for the Christmas period and will re-open one week prior to the commencement of the 2011 school year. Volunteers are being sought to help on the following days. Please indicate your willingness to assist by completing below. You will be contacted confirming times. Hours are as follows:



DAY/DATE	TIME	PLS TICK	INDICATE TIMES AVAILABLE
Monday 17 <sup>th</sup> January 2011	8.00am – 2.00pm		
Tuesday 18 <sup>th</sup> January 2011	8.00am – 2.00pm		
Wednesday 19 <sup>th</sup> January 2011	8.00am – 2.00pm		
Thursday 20 <sup>th</sup> January 2011	8.00am – 2.00pm		
Friday 21 <sup>st</sup> January 2011	8.00am – 2.00pm		

NAME: \_\_\_\_\_ PHONE NO: \_\_\_\_\_

Please return this completed form to the Retail Centre, School Front Reception or post to:-

Grace Lutheran College P&F Association  
 PO Box 3181  
 Clontarf Qld 4019

SCIENCE DEPARTMENT

**A visit to the Science Department**

Year 6 students from Living Faith come to visit the Grace Science Department on Monday 22<sup>nd</sup> November. They had an eventful morning experiencing a series of science demonstrations that were designed to spark their interest in what's ahead when they study science. The students investigated the properties of non-Newtonian fluids dancing on speakers, inertia in fresh versus boiled eggs, emission tubes and how neon lights work and the creation of static electricity by the Van de Graaff. In the Chemistry field they tested the acidity of a range of household substances with a myriad of coloured indicators such as red cabbage. All students had a wonderful taste of high school Science thanks to Mr Ayre and Mr Carter.

Ms Rita Hermus  
 Head of Science





### Tidying up

We come to the end of the school year with the mixed perceptions of "Already?" (where did the year go? how can it be almost Christmas again so soon?) and "At last!" (thank goodness 'cos I'm beat!). Whether you're one or the other or both of these, it's time to tidy up a few loose ends before we head off to the holidays.

- **Year 12s** who have applied for performing and visual arts courses need to keep in mind that early offer rounds begin as soon as Dec 2 and December 16. Response dates follow only a week later, so please be vigilant to make sure you don't miss out!
- The national **Careers and Employment Expo** is one of the major events on the Careers calendar with something for everyone from Year 7 to Year 12. Please mark these dates on your 2011 calendar: 13/14 May at the Convention Centre, Southbank.
- Similarly, **TSXPO** is an absolute must for Year 12s and very useful for Years 10 and 11 students. For

2011, mark the dates 16/17 July at the RNA Showgrounds.

- We've done our best to catch up with those students who needed to review their subject choices in the light of final results. No doubt there will be a few more to look at when we return in January.

A few final words for 2010:

- Our very best wishes to our graduands as they move on to the next stage of their lives;
- My thanks to my colleagues Ms Wright and Mrs Barnard for another very enjoyable year in our office;
- May the Christmas message of the Saviour come amongst us give you peace and hope in a frantic and challenging world.

See you next year!

Mrs Barnard, Ms Wright and Mr Hauser

## INTERACT REPORT 2010

It was another busy year for the Interact Club in 2010. Savannah Van der Niet held the club together successfully as club President, with Jess Malcolm as our Treasurer and Athena Falls in the Secretary's seat. Club numbers increased at the beginning of the year, and our first challenge was to collect Easter eggs from staff and students. Again the school responded and we had many eggs to deliver to Nursing homes and the Hospital in the Redcliffe area. We had enough to send to a couple of Nursing homes outside Redcliffe as well! Thanks to everyone who helped support this, and two Year 7 Antares home classes won the Pizza class prize for the most eggs collected.

We had three successful BBQ days at the Middle and Senior school Athletics carnivals and Triathlon, raising nearly \$2000 dollars in total. This money was given to the Rotary club of Kippa-Ring, so that they could match our funds to purchase two Shelter boxes for families who have lost their Homes in countries affected by floods, earthquakes and other natural disasters. These funds also assisted Rotary International in the fight against the disease Polio, the campaign called Polio Plus.

Throughout the year we have been collecting used letter stamps to provide funds to send office equipment, and also unused stationery items such as pencil cases, pens, paper, books for school children in undeveloped countries overseas. At our school's Open Day we set up a stall to advertise our club to visiting parents and students.

During the year we welcomed Miss Beattie to our club and we thank her for her valuable assistance and new ideas! We wish her well as she moves on to a new position in a Redcliffe school.

We said goodbye to My, a visiting Exchange student from Sweden, and in January one of our own students, Rosie Cook is off to Sweden for a Rotary exchange for 2011. We hope you have a rewarding and wonderful time in Sweden, Rosie.

In June we welcomed a new Exchange student from Germany,

Lea Kleinz who has already settled well into school life here. She will be returning to Germany in June, but she has many plans for the next 6 months here in Australia, and we are really enjoying her company!

Since September we have collected a large number of packets of Red Frogs sweets and Pancake mixes for 'Red Frogs Australia' – a group set up to provide assistance to Year 12 students at the annual 'Schoolies Week'. We had our picture taken and made front page of the local "Redcliffe Herald" newspaper!! At last weeks Kippa-Ring Rotary meeting we gave a donation of \$500 to the organisation, and we were also able to donate \$1000 to assist the Rotary club in a project they are planning for next year, to provide fresh water for communities in Papua New Guinea.

I would like to sincerely thank Savannah for her inspiring leadership, and support of the Interact club since her early days in Year 8 at Grace, and Jess and Athena who have also been members since Year 8 or 9. Without these girls a club like ours would not survive!

Thanks also to **all** the members who have given their time and effort to help the club achieve its goals this year. Together we can make a difference!

Mrs. Sue Turner

### QSA MESSAGE

**A Message from the QSA - SEP Hotline — call 1800 804 991**

**Year 12 students** with general enquiries about their Senior Education Profile (SEP) or wishing to discuss their results or OP/Tertiary Selection Rank pathways can call the QSA's SEP Hotline from 8:30 am–4:30 pm from Monday 20 December 2010 until Friday 14 January 2011. Please note the hotline closes for Xmas and New Year from 4:30 pm on Friday 24 December 2010 until 8:30 am Monday 4 January 2011.

The final task that year 12 students complete in Senior English is a Dramatic Collage. This year we had a Showcase of the best during the final English double on Tuesday 9 November, so that we could all see the quality of the performances throughout the whole grade. It was most entertaining and enjoyable. English teachers of Senior English, English Communication and English Extension would like to thank the students for their efforts and wish them great happiness.



Miss L Kissick-Head of English

The College office will be open until Friday 17th December 2010. It will reopen on Monday 10th January 2011.

Office hours during the holidays will be 8.00am - 3.30pm. Only Administration and Grounds staff are at the College during school holidays.

Uncollected reports may be collected from the Office from Monday 6 December 2010.

## PERFORMING ARTS

I would like to take this opportunity to say a huge congratulations and thank you to all of the students, staff and parents who have made 2010 such a successful year in Performing Arts at Grace. We appreciate all of your efforts and look forward to working together again in 2011.

### Performing Arts Support Group

A particular thank you to the parents involved in the Performing Arts Support group in 2010. At the end of this year we say goodbye to some long standing members: Mrs Marian Brooks, Mr & Mrs Clarke, Mr & Mrs Geary, and Mrs Rodrigues. Your tireless efforts and many, many hours of work have provided funds and resources for the Performing Arts students and for this we thank you. Additionally we would like to thank all the other Performing Arts parents who are finishing at the College and have helped out by fundraising, turning sausages on the BBQs, helping pack up and much more.

### Performing Arts Showcase & Break-up

A big thank you and congratulations to all the students and staff involved in the Sunday afternoon performance and break-up. It was fantastic to see the results of all your hard work throughout the year. Well done!

### Senior Drama Troupe

Thank you to Senior Drama Troupe and Miss Seymour who have been running chapel services at both campuses during the past fortnight, sharing the gospel message through the Christmas story.

### Middle School Dance Troupe

Congratulations to our Middle School Dance Troupe who performed at the Living Faith fete on Saturday. Thank you to Mrs Greive their director for all your hard work.

### Grace Concert Ensemble

Over the past 7 weeks the Grace Concert Ensembles on each campus have been rehearsing hard for an end of year Christmas concert. Students from our feeder primary schools who

will be attending the College in 2011 were invited to join with some of our current ensembles to find out what music at Grace will be like. Under the direction of Ms Alice Thomline, Mr Jarrod Schindler and Mr Eddie Whiting, the ensembles will perform for family and friends in the following concerts:

Caboolture Campus ensembles: Thursday 25th November, 5pm

Rothwell Campus ensembles: Friday 26th November, 6:30pm

### Return of Music Folders

All students who have been issued with music and folders for choirs and instrumental music ensembles are required to return them to M block before the end of the year. Unreturned or damaged items may incur a replacement fee.

### Return of School Instruments

All school instruments that are out on loan are required to be returned before the end of the school year. Unreturned or damaged items may incur a repair or replacement fee.

Mrs Rachel Howley  
Head of Co-Curricular Performing Arts



**YEAR 7 SPORT RESULTS 12.11.10**

<b>AFL</b>	1 v Hercules Road 2	Won	36-24
	2 v Hercules Road 1	Lost	0-114
<b>BOYS BASEBALL</b>	1 v Humpybong SS	Draw	8-8
	2 v D'Bay North SS	Won	13-5
<b>CRICKET</b>	1 v Scarborough SS 1	Lost	17-90
<b>GIRLS SOFTBALL</b>	1 v Kippa Ring SS	Lost	1-2
	2 v Moreton Downs SS	Lost	2-11
<b>BOYS TOUCH</b>	1 v Hercules Road 1	Draw	2-2
	1 v Hercules Road 2	Won	3-1
	2 v D'Bay North SS	Lost	1-4
	2 v Hercules Road 1	Lost	1-7
<b>TENNIS</b>	1 v Grace Primary	Draw	6-6
	2 v D'Bay North SS	Won	9-7
	3 v D'Bay North SS	Won	14-2

**Best Players:** AFL: Katee Maller, Aurora Kellam-Pearson, April Nougher-Dayhew. Baseball: Brayden Hill, Mitchell Gale. Tennis: Sarah Garvey, Bailey Brown, Jye Blanch

**UNDER 16 GIRLS RUGBY LEAGUE CARNIVAL**

On 12 November the Girls Under 16 Rugby League team travelled to Purtell Park, Bardon to compete in a Gala Day against schools from throughout Brisbane. The competition was very tough, however, our girls equipped themselves extremely well against some very physical competition. Grace competed in four matches with the following results:- Grace defeated Alex Hills 4-2, Grace defeated Chisolm College 4-1, Drew 3-3 with Marsden and lost 3-2 to Ipswich.

The girls should be extremely proud of their efforts. **Jessica Somerville** was awarded our Best and Fairest award with an inspired display in attack and defence, whilst **Mikala McDonald, Raimee Brooke** and **Rebecca Martin** were tough and uncompromising for the duration. Special mention should also be given to **Megan O'Brien, Sophie Willis** and **Stephanie Wood** who also crossed for tries. The future looks bright for Girls Rugby League at the School.

**Well done Girls!! Coach Mr L Reck**

**Team:** Raimee Brook, Megan O'Brien, Stephanie Wood, Tayla Jeal, Roxanne Pomeroy, Sophie Willis, Jessica Somerville, Melanie Gray, Mikala McDonald, Tiarna Powell, Taylah Powell, Rebecca Martin, Tanna Rafter, Robyn Medley

**GOLF**

With Metropolitan Finals not happening in golf this year, a local event was held instead between Grace, Mueller and Bribie Is SHS. As Grace and Mueller have actually been the Metro finalists for the past 2 years, this seemed fitting. Well done to the Grace team who earned a convincing win with some great golf being played.



All players played well with Beau Cogill playing his home course (Redcliffe) in an outstanding 1 over par. The team was **Beau Cogill, Ben Knight, Steve March, Jarrod Stirling** and **Damien Buss**. Well done to all!!

**NEWSLETTER ARTICLES**

Any articles or information for the sports section should be sent to Mr Rackley or Mrs Brown either via the Grace College office or E-mailed to:- [sport@glc.qld.edu.au](mailto:sport@glc.qld.edu.au) NB: Please report all items of interest!

**WEEKLY SUMMER SPORT FOR 2011****Senior School (Years 10-12)**

There will be the normal sports offered for weekly sport with boys and girls teams in Basketball, Cricket, Futsal, Touch and Volleyball. There will be 'B' team options in some sports as Grace supports the Caboolture Campus to fill teams and with a new format that might allow some other 'B' teams to play. This may involve extra travel although when possible, venues will be kept as close as possible to the Rothwell Campus.

**Middle School (Years 8&9)**

The sports offered will be Basketball, Cricket (for boys only), Futsal, Softball (for girls only) Touch and Volleyball. One team will be filled from the Rothwell campus and will participate with the Peninsula schools while another team will be based at the Caboolture campus and will be made up of students from both Caboolture and Rothwell campuses. Rothwell students in these teams will need to travel for sport every week and must be prepared to commit to this before the teams are finalized.

**Year 7**

The sports offered will differ between the Caboolture and Rothwell Districts but both campuses should have some options for non-interschool sports where numbers allow.

**BORROWED SPORT UNIFORMS**

Now that Interschool sport and Co Curricular sport are drawing to a close we have been stocktaking in the **Sports Department** and we have found that there is a large number of uniform items that have been borrowed from the Sports Office that need to be returned. If you have items at home that don't belong to you please get them back to the school so that other people can use them. The **Interschool shirts** that belong to the College have only a number and no name. No student has a shirt without a name.

**Parents**, if you see a shirt at home that has not got your student's name on it, could you please send it back to school.

**At NO stage have any school sport uniforms ie Soccer or Football jerseys or Athletic Singlets been given to students to keep.**

**Please return items that are not yours ASAP.**

**Thank You.**

**SURF AID INTERNATIONAL**

**Mrs A Shannon**

On Saturday 20 November, 20 students went up to Kings Beach to raise money for Surf Aid International. Surf Aid International is a non-profit organisation that works to improve the health, wellbeing and self-reliance of people living in isolated regions connected to us through surfing.

The students have been working in class on the devastation faced by the people in the Asia-Pacific region, particularly following the recent earthquakes and tsunamis.

The Year 10 students have held a slip-and-slide, boogie board races, sausage sizzle and surf competition, with all funds raised going to help the people of the Mentawai Islands.

A big THANKYOU to **Peter Miles** and all those who have supported this cause.





**INTER-HOUSE CARNIVALS FOR 2011**

All carnivals will still be run as Middle School and Senior School carnivals separately with some being on the same day and others on different days. The dates are as follows -

	<u>Middle School</u>		<u>Senior School</u>	
Swimming	15 February	(All day)	15 February	(All day)
Cross Country	5 April	(per 4-5)	5 April	(per 6-7)
Athletics	26 July	(All day)	29 July	(All day)
Triathlon	6 October	(per 5-7)	5 October	(per 5-7)

Next year the Middle School Swimming Carnival will be held at the Caboolture Regional Aquatic Centre at Morayfield and the Senior School Carnival will be held at the Redcliffe Memorial Pool. All other carnivals for 2011 will be held at Rothwell.

**MAJOR SPORTS DATES 2011****Feb**

Tues	8 or 15	Zone Trial Day 1
Fri	18 (TBC)	District Swimming Year 7 Redcliffe
Mon	21	District Swimming (Redcliffe Pool) Secondary
Tues	22	Regional Trial Day 1
TBC		District Swimming (Year 7 Caboolture)

**March**

Thurs	3	Inter-Lutheran Swimming Secondary
Fri	4	Primary Regional Swimming
Mon	7	Inter-Lutheran Swimming Primary
Thurs	10	Regional Swimming Secondary
Tues	15	Zone Trial Day 2
Tues	22	Regional Trial Day 2

**May**

Fri	6	Inter-Lutheran Cross Country Secondary
Tues	17	Zone Trial Day 3
Thurs	19 (TBC)	District Cross Country Year 7 Redcliffe
Tues	24	Regional Trial Day 3
TBC		District Cross Country Year 7 Caboolture

**June**

Tues	7	Regional Cross Country Secondary
Wed	8	Regional Cross Country Primary
Thurs	16/17 (TBC)	District Athletics Year 7 Redcliffe
Wed	22	Inter-Lutheran Primary Athletics
(TBC)		District Athletics Year 7 Caboolture

**July**

Thurs	21	Regional Primary Athletics
-------	----	----------------------------

**August**

Tues	2	District Athletics 13 & 14 Years
Fri	5	District Athletics 15, 16 & over 16 Years
Tues	23	Inter-Lutheran Athletics Secondary
Wed	24	Sports Photos—Caboolture
Thurs	25	Big Team Sports Photos—Rothwell
Fri	26	Sports Photos—Rothwell

**September**

Fri	2	Regional Athletics Secondary—afternoon
Tues	6	Regional Athletics Secondary

**If there are any changes to dates throughout the year we will advise of these in the newsletter as soon as we are notified.**

**NETBALL SIGN ON 2011** Calling for girls interested in playing extra curricular netball for Grace College on Saturday afternoons in the next season (March-August) at Caboolture Netball Association. The trials will be the first week in February. If interested or want to find out more details please email Mrs Look at [chris\\_look@glc.qld.edu.au](mailto:chris_look@glc.qld.edu.au). I will email those players who email their interest towards the end of the holidays with more info.

**VICKI WILSON TEAM 2011** I encourage all Years 9-12 girls who intend to play at a high standard on a regular basis for the 2011 season to trial for this squad. We are at the stage where we have a few experienced players left from this year's team who will lead the new players that get selected. If you think you will be playing in a good competition consistently during the 2011 season and you would be committed to training on Tuesday afternoon in this squad please email Mrs Look to register your interest. Depending on the interest and the standard of the players I will determine what competitions we enter in 2011 so remember to nominate asap.

**Mrs C Look**

**CONGRATULATIONS** - **Nicholas Boys (9PH)** has been selected in the Baseball Under 14 Rams (QLD) team and will compete at the National Championships in Perth in January. **Well done and good luck!!**

### **WALL OF HANDS FOR INDIGENOUS LITERACY WITH COMMONWEALTH DISCUS GOLD MEDALIST BENN HARRADINE**

Students have been very busy doing hand prints for the 'Wall of Hands' which will be built in the shape of an aboriginal flag—about 12 metres long, in the MPC, this Thursday. It is hoped that close to 1000 students will be involved in some way. The action will then move to the oval where Commonwealth Games Gold medallist **Benn Harradine** will have a Challenge competition with Grace athlete, National Champion and State record holder,

**Mitchell Cooper**. All funds raised will support indigenous youth programs and Watoto Children's Services. Sponsorship has been received from Halcol Enman Rothwell, IGA Roth-Sports Rothwell, Subway Bakery Rothwell and the Your sponsorship is Thankyou from all those



energy, Harvey Norwell, Amart All Rothwell, Sweet House of Caladan. greatly appreciated. you have helped.