

2011-12 U.S. SOCCER DEVELOPMENT ACADEMY TECHNICAL REPORT



PLAYER DEVELOPMENT

PROFESSIONAL PLAYER DEVELOPMENT HISTORY

YNT PLAYER DEVELOPMENT HISTORY

Player has both participated in a youth national team event at U-15, U-17, U-18, U-20, U-23 or MNT and has been part of the Academy club for two or more consecutive seasons.

STYLE OF PLAY

Overall grade based on scouting by USSF Technical Staff during 2011-2012 season for 15/16 & 17/18 age group teams evaluated in the following areas: Offensive, Quick Transition & Finishing, Defending, Tactics (playing out from the back), Technical, Physical, Psychosocial

TRAINING ENVIRONMENT

Based on evaluations of the following areas that contribute to the overall quality of the training environment: Attendance, Coaching, Translation to Matches, Planning, Logs, Competitiveness and Intensity

FACILITIES

The club _____ field space for training at _____ in _____
and matches are played at _____ in _____ The facilities have _____

PLAYER EXPENSE

The goal of the Academy is to reduce all player fees for players who participate in the Academy program.

The club provides _____ reduction of fees to _____ of its players to participate in the Academy.

RESPECT (THIS IS AN AWARD CATEGORY)

The RESPECT Campaign was launched in May 2010 by U.S. Soccer to improve the level of professionalism throughout the Development Academy program. The RESPECT grade is based on a club's disciplinary record, professionalism of staff and spectator behavior. The Award Winner for each Conference is as follows: East – PA Classics; South – Weston FC; Central – Crew Soccer Academy; West – De Anza Force

PLAYER DEVELOPMENT MODEL FOR ZONE 1, ZONE 2, & ZONE 3

The club's programming and age appropriate opportunities for players age 5 through 18+

• ZONE 1 (5-12)

• ZONE 2 (13-18)

• ZONE 3 (18+)

ADMINISTRATIVE

Based on the clubs ability to fulfill the administrative responsibilities required by Academy clubs, including scheduling, marketing, registration, web site maintenance, communication and attendance at required Academy events

TECHNICAL STAFF:

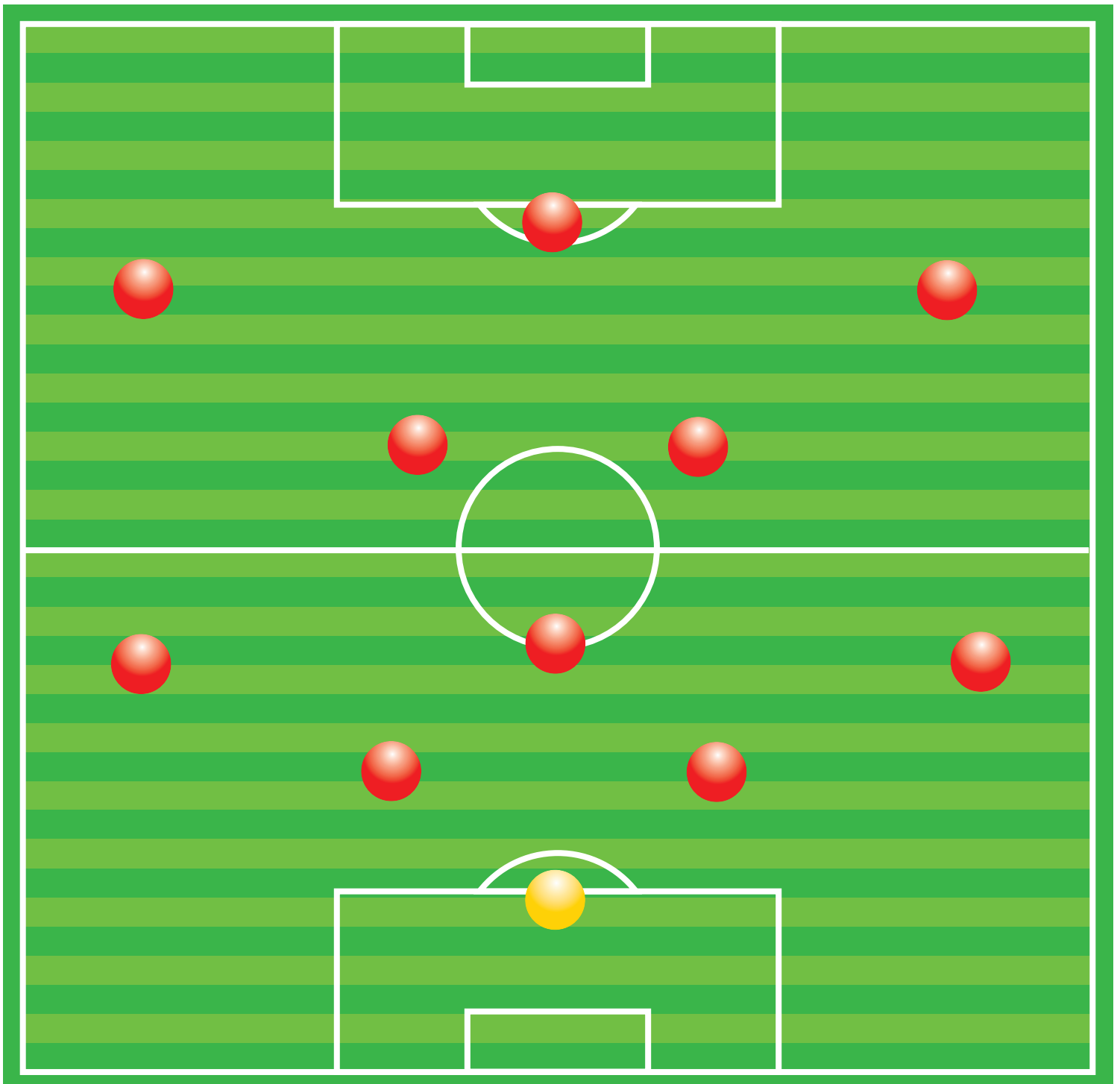
KEY PLAYERS:

PLAYERS PER BIRTH YEAR:

DISCIPLINARY RECORD:

UNIQUE PLAYERS MOVED UP
(3 OR MORE APPEARANCES):

- GAMES PLAYED:
- CAUTIONS:
- EJECTIONS:
- COACH SEND-OFFS:



TECHNICAL STAFF:

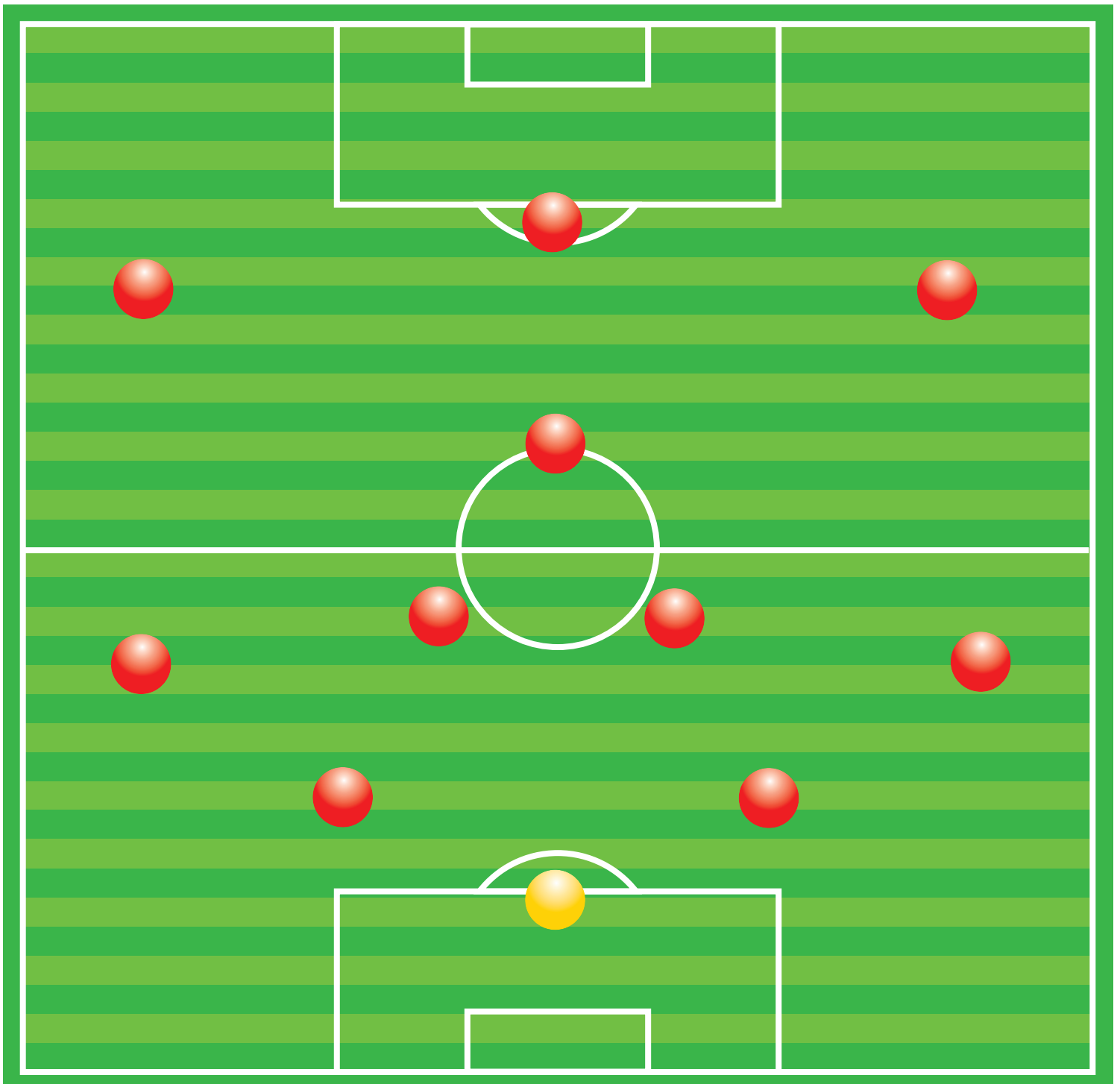
KEY PLAYERS:

PLAYERS PER BIRTH YEAR:

DISCIPLINARY RECORD:

UNIQUE PLAYERS MOVED UP
(3 OR MORE APPEARANCES):

- GAMES PLAYED:
- CAUTIONS:
- EJECTIONS:
- COACH SEND-OFFS:



TECHNICAL STAFF:

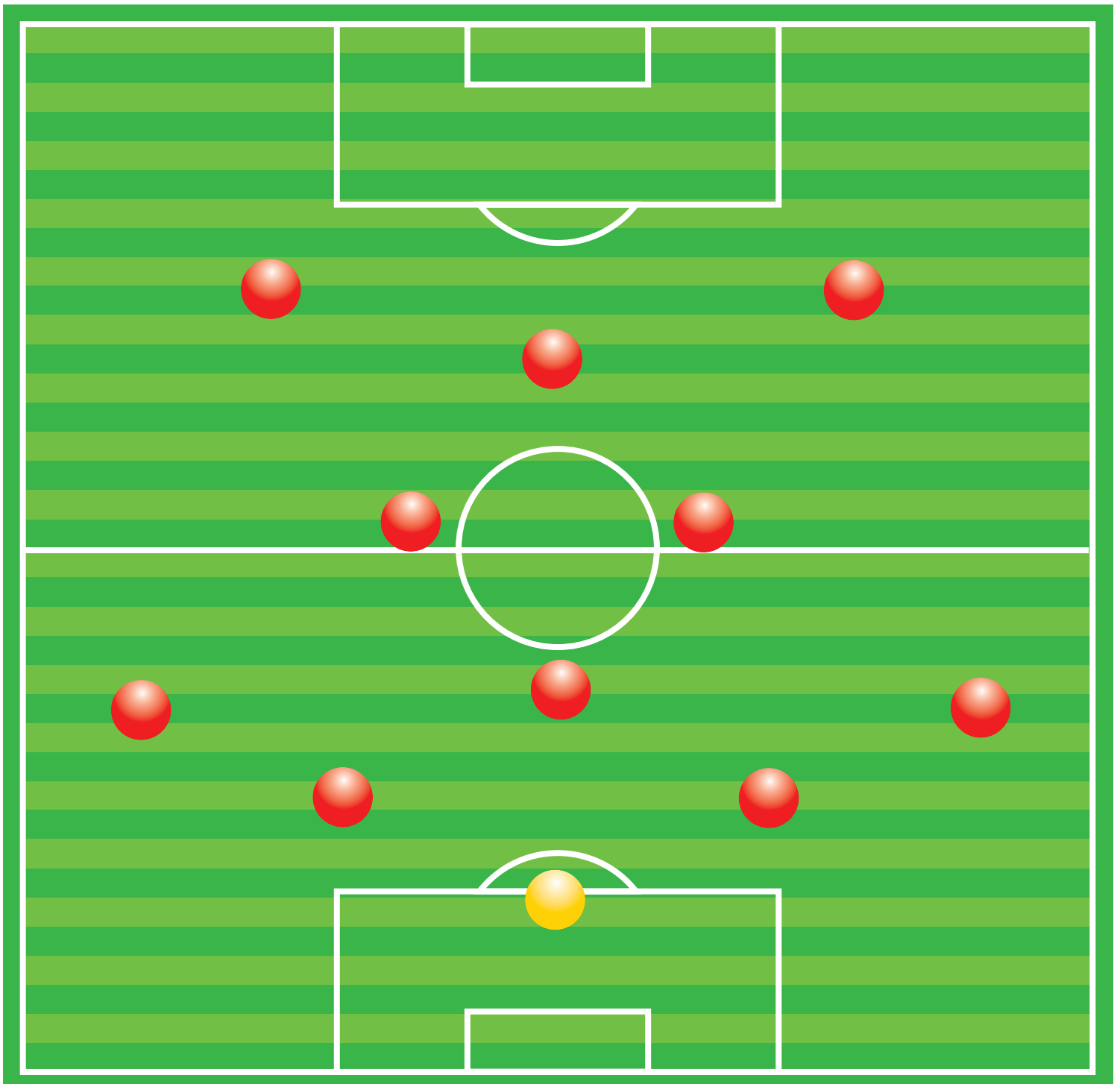
KEY PLAYERS:

PLAYERS PER BIRTH YEAR:

DISCIPLINARY RECORD:

UNIQUE PLAYERS MOVED UP
(3 OR MORE APPEARANCES):

- GAMES PLAYED:
- CAUTIONS:
- EJECTIONS:
- COACH SEND-OFFS:



TECHNICAL STAFF:

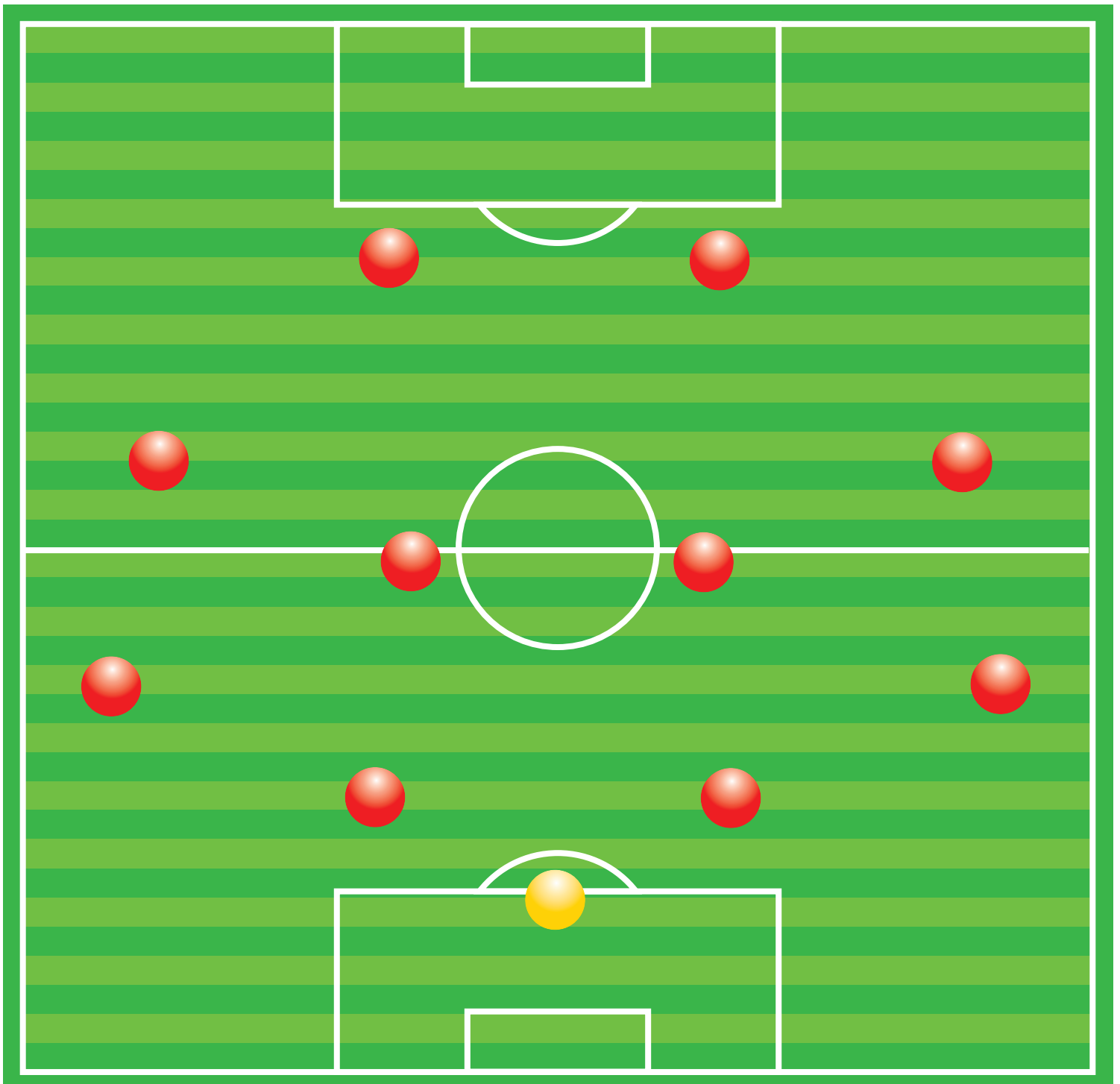
KEY PLAYERS:

PLAYERS PER BIRTH YEAR:

DISCIPLINARY RECORD:

UNIQUE PLAYERS MOVED UP
(3 OR MORE APPEARANCES):

- GAMES PLAYED:
- CAUTIONS:
- EJECTIONS:
- COACH SEND-OFFS:



TECHNICAL STAFF:

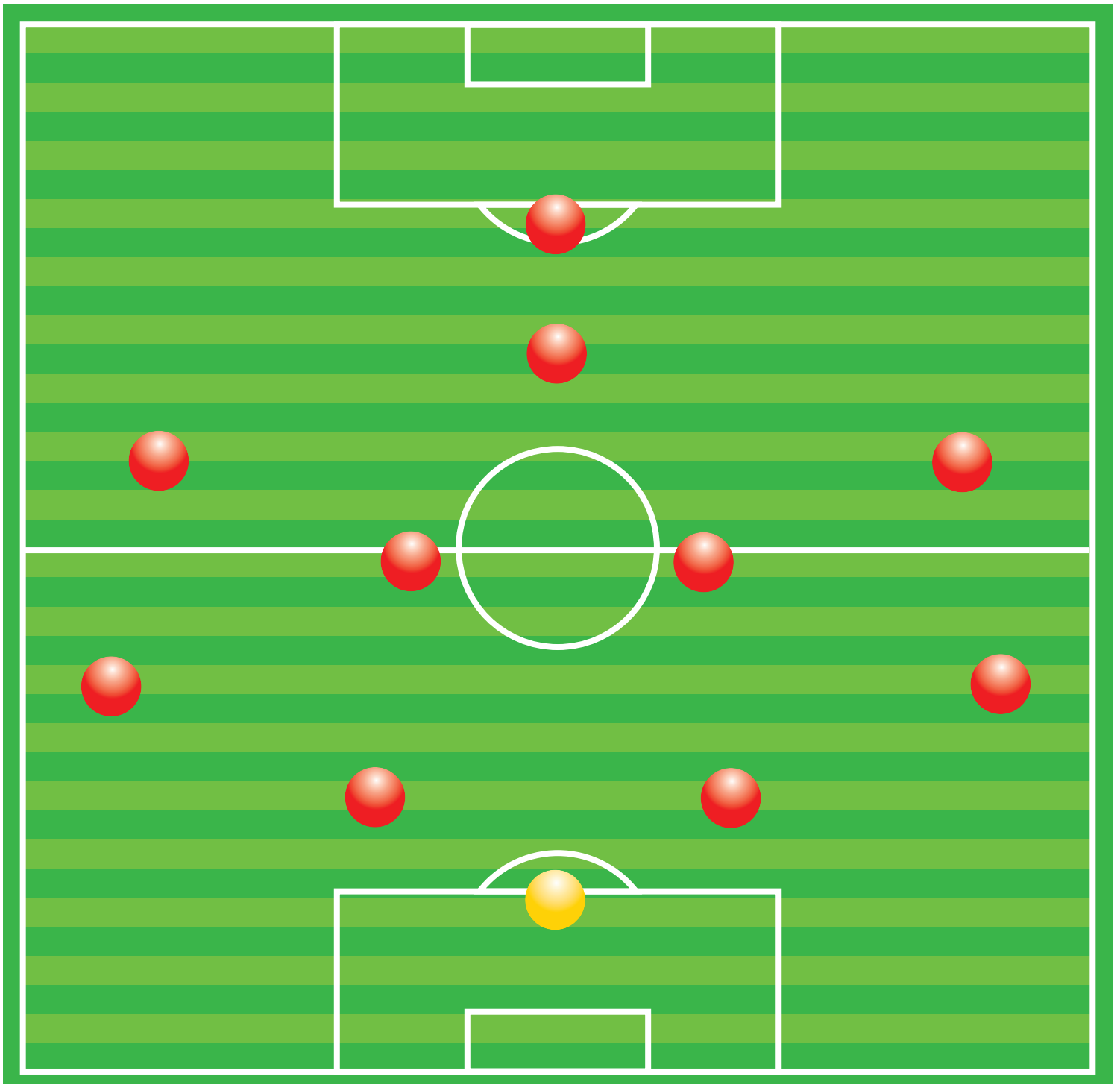
KEY PLAYERS:

PLAYERS PER BIRTH YEAR:

DISCIPLINARY RECORD:

UNIQUE PLAYERS MOVED UP
(3 OR MORE APPEARANCES):

- GAMES PLAYED:
- CAUTIONS:
- EJECTIONS:
- COACH SEND-OFFS:



TECHNICAL STAFF:

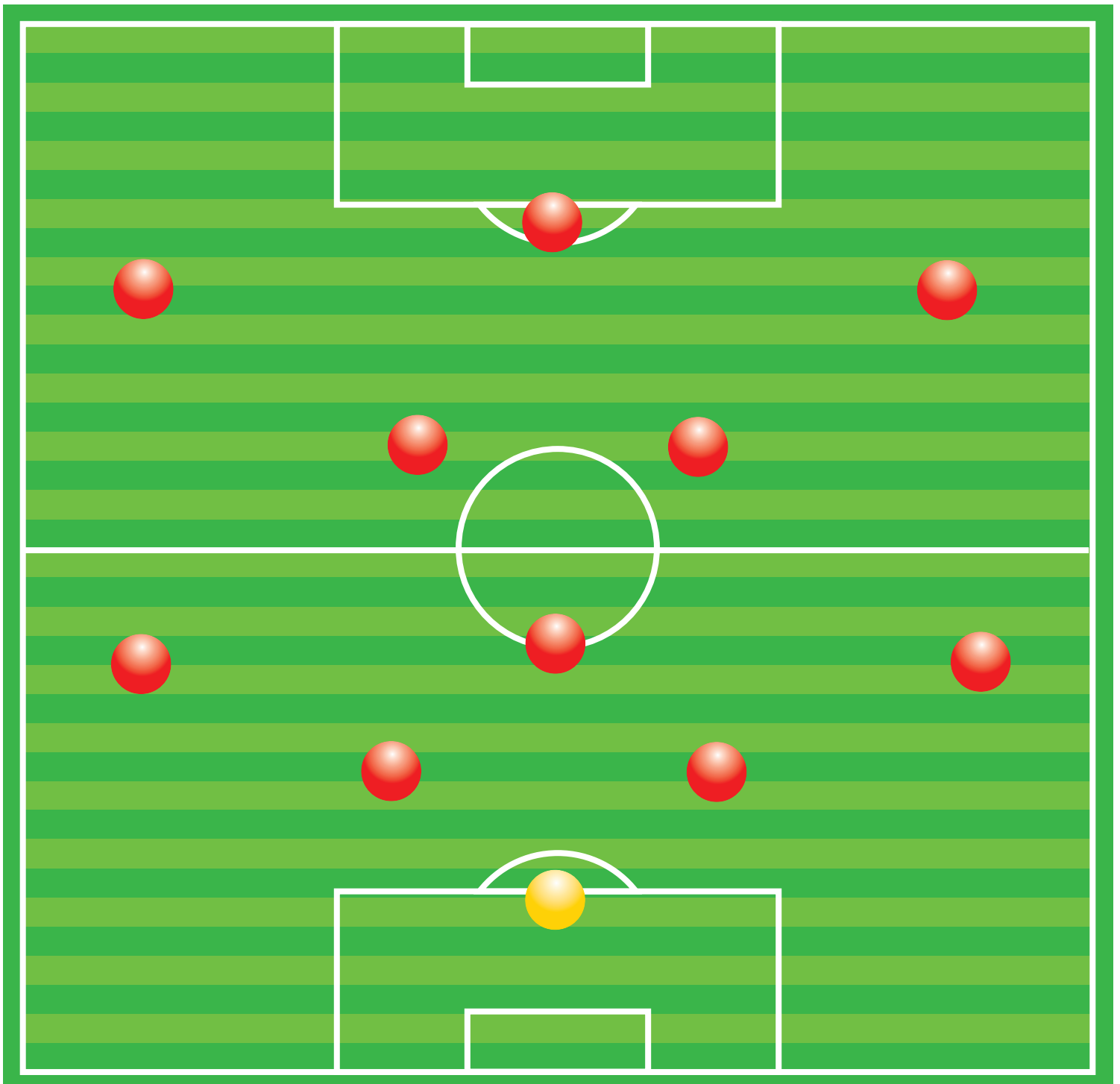
KEY PLAYERS:

PLAYERS PER BIRTH YEAR:

DISCIPLINARY RECORD:

UNIQUE PLAYERS MOVED UP
(3 OR MORE APPEARANCES):

- GAMES PLAYED:
- CAUTIONS:
- EJECTIONS:
- COACH SEND-OFFS:



TECHNICAL STAFF:

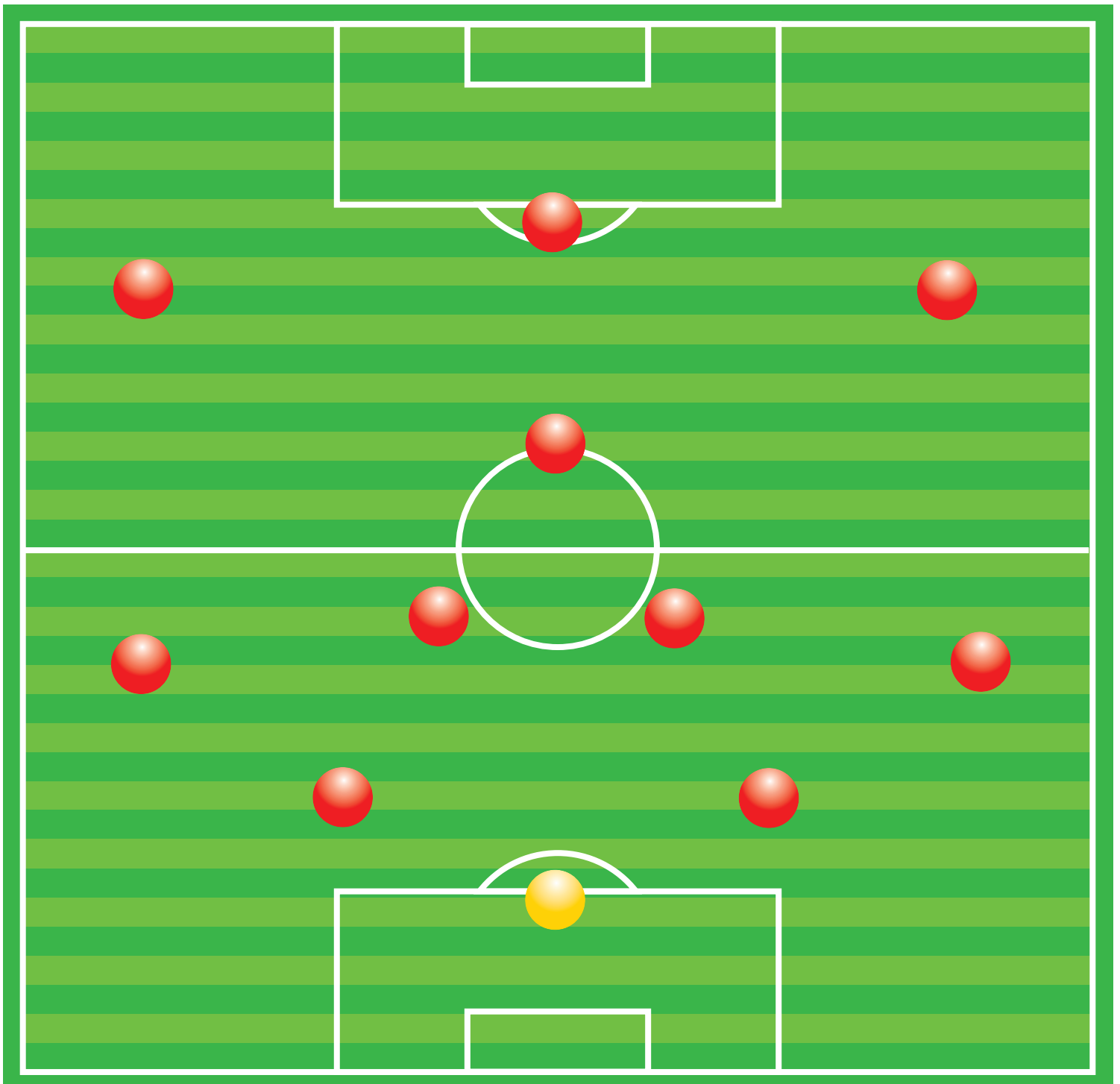
KEY PLAYERS:

PLAYERS PER BIRTH YEAR:

DISCIPLINARY RECORD:

UNIQUE PLAYERS MOVED UP
(3 OR MORE APPEARANCES):

- GAMES PLAYED:
- CAUTIONS:
- EJECTIONS:
- COACH SEND-OFFS:



TECHNICAL STAFF:

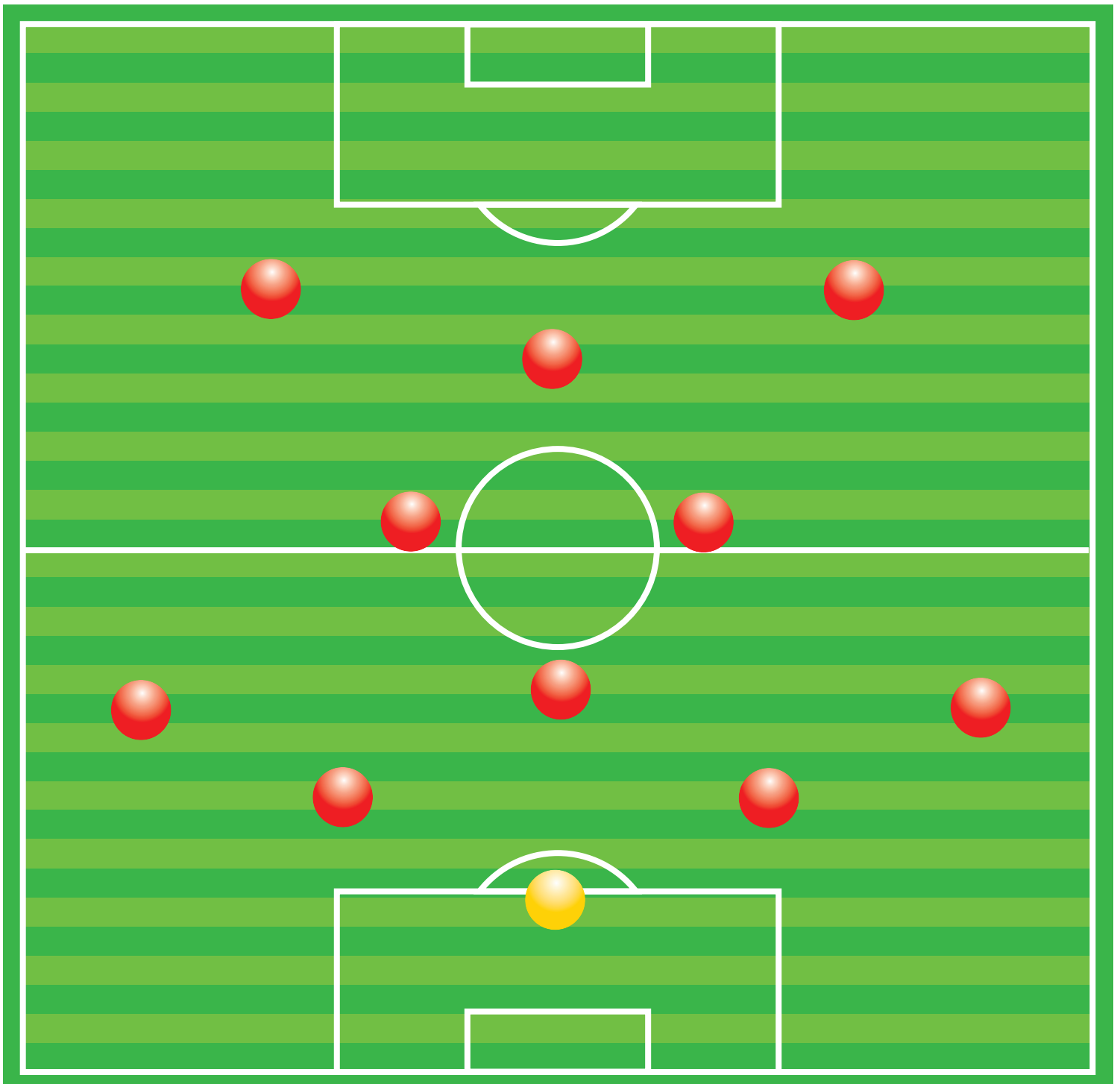
KEY PLAYERS:

PLAYERS PER BIRTH YEAR:

DISCIPLINARY RECORD:

UNIQUE PLAYERS MOVED UP
(3 OR MORE APPEARANCES):

- GAMES PLAYED:
- CAUTIONS:
- EJECTIONS:
- COACH SEND-OFFS:



TECHNICAL STAFF:

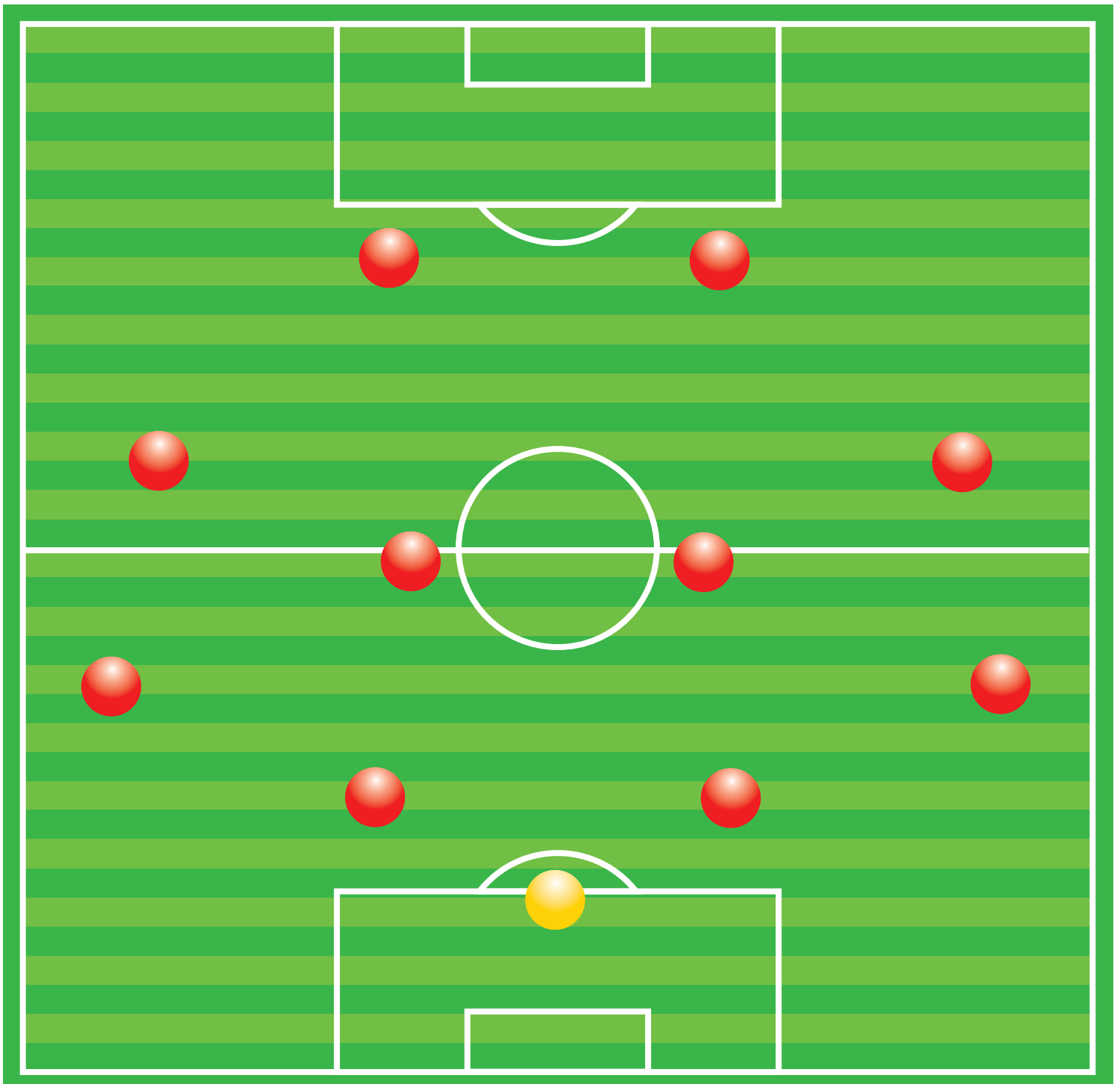
KEY PLAYERS:

PLAYERS PER BIRTH YEAR:

DISCIPLINARY RECORD:

UNIQUE PLAYERS MOVED UP
(3 OR MORE APPEARANCES):

- GAMES PLAYED:
- CAUTIONS:
- EJECTIONS:
- COACH SEND-OFFS:



TECHNICAL STAFF:

KEY PLAYERS:

PLAYERS PER BIRTH YEAR:

DISCIPLINARY RECORD:

UNIQUE PLAYERS MOVED UP
(3 OR MORE APPEARANCES):

- GAMES PLAYED:
- CAUTIONS:
- EJECTIONS:
- COACH SEND-OFFS:

