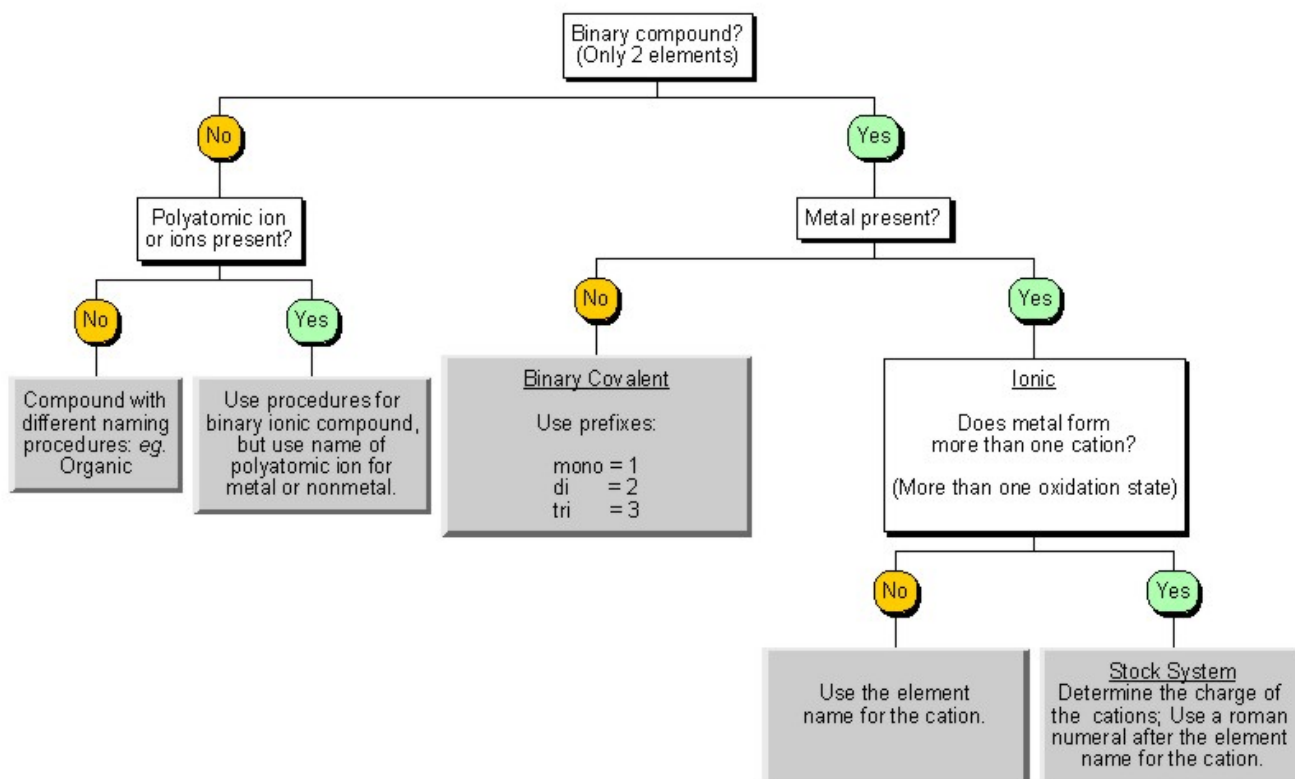


Naming: Putting it all Together

Below is a flow chart showing the steps to follow when naming a compound from the formula. Following the flow chart will enable you to determine when to use the stock system, when to use a set of prefixes, and when to look up the names of polyatomic ions in *Table E*.



The compounds below are of several different types. Use the flow chart to determine the naming system to use and name each compound shown below.

- | | |
|-------------------------------------------------|-----------------------------------------|
| 1. $\text{Fe}(\text{NO}_2)_3$... _____ | 9. Br_2O _____ |
| 2. $\text{Na}_2\text{S}_2\text{O}_3$... _____ | 10. HgSO_4 _____ |
| 3. P_2O_5 _____ | 11. Al_2O_3 _____ |
| 4. BaBr_2 _____ | 12. SCl_6 _____ |
| 5. $\text{Mn}_2(\text{Cr}_2\text{O}_7)_7$ _____ | 13. IF_7 _____ |
| 6. CaCl_2 _____ | 14. $\text{Cr}(\text{CO}_3)_3$.. _____ |
| 7. $(\text{NH}_4)_2\text{S}$... _____ | 15. KNO_2 _____ |
| 8. CuF _____ | 16. AuP _____ |