



*Your Success is Our Reputation!*

Superior Show Service is pleased to have been named as the Official Show Contractor for the:

## **Lloydminster Showcase**

**April 1-3, 2016**

We want your experience at this event to be as positive as possible. To assist you in planning your exhibit area, we have created an exhibitor package with order forms showing our available rental equipment and services.

A 10' x 10' Exhibit Booth will include the following;

- 8' High Backwall Drape
- 4' High Sidewall Drape
- 1- 8' Decorated Table
- 2- Folding Chairs
- 100 Sq.Ft. of Booth Carpet
- 1- 800 Watt Electrical Outlet
- 2- 150 Watt Floodlights

A Bulk Booth will include the following;

- 1- 8' Decorated Table
- 2- Folding Chairs
- 1- 800 Watt Electrical Outlet
- 2- 150 Watt Floodlights

Your exhibit space includes 1- 8' Decorated Table. If you wish to change your table size, please indicate your preference below and return this form to our office promptly.

***Table changes not ordered before March 18, 2016 are subject to a fee. Please see Display Rental Form for pricing.***

**Company Name** \_\_\_\_\_ **Booth #** \_\_\_\_\_ **No Table**  **6 Ft.**  **4ft.**

If you place your order in advance, you can save up to 30% on most of our rental equipment. Getting your order in early enables us to make sure we have exactly what you want and you will not have to line up at the show to place your order. Pre ordering not only saves time on site but also saves you money. If you require any specialty furniture or display equipment that you don't see listed on our order forms, please contact us and we will try to satisfy your requirements. If additional power services are required, it is important that we receive your order early.

We are pleased to provide Online Ordering for your convenience. To take advantage of our Online Ordering, please visit our website at [www.superiorshow.com](http://www.superiorshow.com). Next choose the Online Ordering link at the top of the page. Choose "**Lloydminster Showcase**" and enter your login and password listed below. You are now at the Online Forms for your event where you can order all your required furnishings and services. When you are satisfied with your order, complete the contact and payment information and click on the "process" button at the bottom right hand corner of the screen. This will take you to the confirmation page that will list all the equipment ordered, billing address and payment information. Once you have confirmed this information is correct, click "Place Order". When the order has been processed you will receive an email with a copy of your order and your payment receipt.

**Login: lloydshow**

**Password: 41236**

***Please note: In order to receive Advanced Pricing, your order must be received with payment before March 18, 2016.***

If you have any questions or require personal assistance, please contact our office at your convenience and we will be pleased to help you. Our phone number is 780-992-0404 or toll-free at 1-888-417-4449.



# Display Rental Form

8599 - 111 Street Fort Saskatchewan, AB. T8L 4S1  
 Ph: 780.992.0404 Fax: 780.992.0406 Toll - Free: 888.417.4449  
 Email: info@superiorshow.com Website: www.superiorshow.com

*Your Success is Our Reputation!*

PLEASE RETURN BY FAX OR EMAIL

<b>COMPANY:</b>		<b>CONTACT:</b>	<b>SHOW NAME:</b> Lloydminster Showcase April 1-3, 2016 Lloydminster, AB/SK	<b>BOOTH #</b>
<b>ADDRESS:</b>		<b>CITY:</b>		
<b>PROV/STATE:</b>	<b>POSTAL/ZIP:</b>	<b>PHONE:</b>		
<b>EMAIL:</b>		<b>FAX:</b>		

**RENTAL PRICING** PLEASE NOTE: **ADVANCED PRICING IS AVAILABLE ON ORDERS RECEIVED WITH PAYMENT 14 DAYS BEFORE SHOW START DATE. ALL ORDERS ARE TO BE PREPAID IN ADVANCE OF SERVICE.**

DISPLAY TABLES AND COUNTERS				ADV	REGULAR	TOTAL
DECORATED TABLE (30" H)	4'	6'	8' COLOUR:	\$70	\$100	
TABLE SKIRT COLOUR CHOICES: WHITE BLACK BLUE RED GREEN BURGUNDY SILVER GOLD						
SKIRT FOURTH SIDE OF TABLE (6' & 8' ONLY)	COLOUR:			\$25	\$35	
VINYL TOPPED TABLE	4'	6'	8'	\$40	\$60	
DECORATED COUNTER (40" H)	4'	6'	8' COLOUR:	\$90	\$120	
COUNTER SKIRT COLOUR CHOICES: BLACK BLUE SILVER						
30" DIAMETER BAR HEIGHT TABLE (42" H)				\$70	\$100	
24" SQUARE STAINLESS STEEL/WHITE CRUISER TABLE (42" H)				\$70	\$100	
SPANDEX COVER FOR BAR HEIGHT TABLE	COLOUR:			\$25	\$40	
SPANDEX COVER COLOUR CHOICES: BLACK RED SILVER						
RECTANGULAR COFFEE TABLE (585MMX1575MMX465MM HIGH)				\$125	\$150	
ROUND COFFEE TABLE (1068MMX465MM HIGH)				\$145	\$170	
WHITE PEDESTAL TABLE (HEIGHT)	16"	30"		\$45	\$65	
TABLE SIZE CHANGES	*ONSITE CHARGE ONLY				\$40	
CHAIRS AND STOOLS				ADV	REGULAR	TOTAL
FOLDING CHAIR				\$15	\$23	
GREY FABRIC CHAIR				\$25	\$35	
GREY FABRIC ARM CHAIR				\$55	\$70	
BLACK LEATHER CHAIR				\$60	\$75	
GREY FABRIC STOOL				\$55	\$70	
BLACK LEATHER STENO STOOL				\$55	\$70	
BLACK LEATHER STOOL				\$60	\$75	
BOOTH ACCESSORIES				ADV	REGULAR	TOTAL
BROCHURE RACK (6 SLOTS)				\$30	\$40	
SIGN HOLDER (22" X 28")				\$30	\$40	
EASEL				\$20	\$25	
WASTE BASKET				\$12	\$15	
GREEN FLOOR PLANTS				\$45	\$65	
DRAW DRUM (TABLE TOP STYLE)				\$45	\$55	
GARMENT RACK				\$30	\$40	
19" FLATSCREEN COMPUTER MONITOR				\$125	\$150	
26" PLASMA TV/DVD COMBO				\$300	\$400	
42" PLASMA TV				\$500	\$600	
FLOOR STAND FOR 42" FLATSCREEN				\$250	\$315	
2' X 8' BLACK GRIDWALL (CUSTOMER TO SUPPLY ALL ACCESSORIES.)				\$20	\$30	
INDOOR BOOTH CARPET				ADV	REGULAR	TOTAL
CARPET COLOUR CHOICES: GREY BLUE RED BLACK GREEN						
10' X 10' INDOOR CARPET	COLOUR:			\$145	\$175	
10' X 20' INDOOR CARPET	COLOUR:			\$290	\$350	
BULK INDOOR CARPET (CUT & LAID PER SQ.FT.)	SQ.FT.	COLOUR:		\$1.45	\$1.75	
UNDERLAY (CUT & LAID PER SQ.FT.)	SQ.FT.			\$0.95	\$1.25	
DAILY VACUUM SERVICE	SQ.FT.	X	# OF DAYS	\$0.35	\$0.50	
POLY (CUT & LAID PER SQ.FT.)	SQ.FT.			\$0.20	\$0.25	
DRAPERY				ADV	REGULAR	TOTAL
DRAPERY COLOUR CHOICES: BLACK BLUE RED GREEN BURGUNDY SILVER						
4' HIGH (PER LINEAR FOOT)	COLOUR:			\$3.50	\$6.00	
8' HIGH (PER LINEAR FOOT)	COLOUR:			\$5.50	\$8.00	

<b>WE ACCEPT VISA/MASTERCARD/AMERICAN EXPRESS</b>		<b>SUBTOTAL</b>	
<b>EXPIRY DATE:</b> MONTH _____ YEAR _____		(R 105 085 260) <b>GST (5%)</b>	
<b>CARD #</b> _____		<b>ORDER TOTAL</b>	
<b>AUTHORIZING SIGNATURE:</b> _____		A 25% ADMINISTRATION FEE WILL BE APPLIED TO ALL ORDERS RECEIVED AND THEN CANCELLED. IF SERVICE HAS BEEN PROVIDED, PAYMENT IN FULL WILL BE APPLIED. PRICING WILL BE ADJUSTED ON ALL ORDERS RECEIVED WITH INACCURATE PRICING OR RECEIVED AFTER ADVANCED DEADLINE. REFUND REQUESTS MUST BE COMPLETED ONSITE.	
<b>EMAIL RECEIPT COPY</b> <input type="checkbox"/>	<b>FAX RECEIPT COPY</b> <input type="checkbox"/>	(PLEASE CHECK BOX)	



# Accessories Rental Order Form

8599 - 111 Street Fort Saskatchewan, AB. T8L 4S1  
 Ph: 780.992.0404 Fax: 780.992.0406 Toll - Free: 888.417.4449  
 Email: info@superiorshow.com Website: www.superiorshow.com

Your Success is Our Reputation!

PLEASE RETURN BY FAX OR EMAIL

<b>COMPANY:</b>		<b>CONTACT:</b>		<b>SHOW NAME:</b> Lloydminster Showcase April 1-3, 2016 Lloydminster, AB/SK	<b>BOOTH #</b>
<b>ADDRESS:</b>		<b>CITY:</b>			
<b>PROV/STATE:</b>	<b>POSTAL/ZIP:</b>	<b>PHONE:</b>			
<b>EMAIL:</b>		<b>FAX:</b>			

## RENTAL PRICING

PLEASE NOTE: **ADVANCED PRICING IS AVAILABLE ON ORDERS RECEIVED WITH PAYMENT 14 DAYS BEFORE SHOW START DATE. ALL ORDERS ARE TO BE PREPAID IN ADVANCE OF SERVICE.**

COUNTERS	ITEM #	DESCRIPTION	DIMENSIONS (W x H x D)	ADV	REGULAR	TOTAL
	1	COUNTER 	0.5m x 1m x 0.5m	\$80	\$105	
	2	COUNTER - WIDE 	1m x 1m x 0.5m	\$120	\$150	
	3	COUNTER W/ SHELF 	0.5m x 1m x 0.5m	\$100	\$120	
	4	A/V PEDESTAL 	0.5m x 1m x 0.5m	\$150	\$180	
	5	COUNTER W/ SLIDING DOORS 	1m x 1m x 0.5m	\$160	\$200	
	6	COUNTER W/ SLIDING DOORS AND YOUR LOGO*(IF LOGO SUPPLIED IN EPS VECTOR FORMAT) DESIGN CHARGES MAY APPLY IF LOGO SUPPLIED IN WRONG FORMAT. 	1 m X 1 m X 0.5 m	\$250	\$315	
	7	COUNTER - CURVED 	1.5m x 1m x 0.5m	\$190	\$225	
	8	COUNTER - CLUSTER 	COUNTERTOP- 0.5Mx0.5M COUNTER 1- 420MM HIGH COUNTER 2- 680MM HIGH COUNTER 3- 1M HIGH	\$250	\$325	
SHOWCASES	ITEM #	DESCRIPTION	DIMENSIONS (W x H x D)	ADV	REGULAR	TOTAL
	9	1/4 VISION SHOWCASE W/ CLOSED BOTTOM AND LOCKING DOORS 	1m x 1m x 0.5m	\$245	\$275	
	10	3/4 VISION SHOWCASE W/ CLOSED BOTTOM AND LOCKING DOORS 	1m x 1m x 0.5m	\$255	\$295	

<b>WE ACCEPT VISA/MASTERCARD/AMERICAN EXPRESS</b>			<b>SUBTOTAL</b>	
EXPIRY DATE: MONTH _____ YEAR _____			(R 105 085 260) <b>GST (5%)</b>	
CARD # _____			<b>ORDER TOTAL</b>	
AUTHORIZING SIGNATURE: _____			A 25% ADMINISTRATION FEE WILL BE APPLIED TO ALL ORDERS RECEIVED AND THEN CANCELLED. IF SERVICE HAS BEEN PROVIDED, PAYMENT IN FULL WILL BE APPLIED. PRICING WILL BE ADJUSTED ON ALL ORDERS RECEIVED WITH INACCURATE PRICING OR RECEIVED AFTER ADVANCED DEADLINE. REFUND REQUESTS MUST BE COMPLETED ONSITE.	
EMAIL RECEIPT COPY <input type="checkbox"/>			FAX RECEIPT COPY <input type="checkbox"/> (PLEASE CHECK BOX)	



# Electric & Lighting Order Form

8599 - 111 Street Fort Saskatchewan, AB. T8L 4S1  
 Ph: 780.992.0404 Fax: 780.992.0406 Toll - Free: 888.417.4449  
 Email: info@superiorshow.com Website: www.superiorshow.com

*Your Success is Our Reputation!*

PLEASE RETURN BY FAX OR EMAIL

<b>COMPANY:</b>		<b>CONTACT:</b>	<b>SHOW NAME:</b> Lloydminster Showcase April 1-3, 2016 Lloydminster, AB/SK	<b>BOOTH #</b>
<b>ADDRESS:</b>		<b>CITY:</b>		
<b>PROV/STATE:</b>	<b>POSTAL/ZIP:</b>	<b>PHONE:</b>		
<b>EMAIL:</b>		<b>FAX:</b>		

## RENTAL PRICING

PLEASE NOTE: **ADVANCED PRICING IS AVAILABLE ON ORDERS RECEIVED WITH PAYMENT 14 DAYS BEFORE SHOW START DATE. ALL ORDERS ARE TO BE PREPAID IN ADVANCE OF SERVICE.**

OUTLETS	ADV	REGULAR	TOTAL
800 WATT DUPLEX OUTLET	\$80	\$100	
1500 WATT DUPLEX OUTLET	\$85	\$105	
1500 WATT DUPLEX OUTLET (24HOUR POWER)	\$90	\$110	
2000 WATT OUTLET	\$90	\$110	
3000 WATT OUTLET - RV PLUG	\$115	\$135	

**IF OUTLET PLACEMENT NOT ORDERED, OUTLET WILL BE PLACED IN BACK MIDDLE OF BOOTH**

OUTLET PLACEMENT (LAYOUT MUST BE PROVIDED 2 WEEKS IN ADVANCE)	\$80	\$100	
---	------	-------	--

### SINGLE PHASE AND THREE PHASE POWER

	ADV	REGULAR	TOTAL
--	-----	---------	-------

#### SINGLE PHASE HOOK-UPS C/W 100' OF CABLE (ONSITE CHARGES MAY APPLY IF ADDITIONAL CABLE IS REQUIRED)

20 AMPS (125/250V TWIST LOCK)	\$200	\$240	
30 AMPS (125/250V TWIST LOCK)	\$260	\$300	
50 AMPS (GFI) (125/250V STRAIGHT BLADE RANGE PLUG)	\$300	\$350	
60 AMPS (125/250V STRAIGHT BLADE 60AMP PLUG)	\$300	\$350	
60 AMPS (GFI) (125/250V STRAIGHT BLADE 60AMP PLUG)	\$350	\$400	
100 AMPS (125/250V DIRECT TIE-IN)	\$400	\$450	

#### THREE PHASE HOOK-UPS C/W 100' OF CABLE (ONSITE CHARGES MAY APPLY IF ADDITIONAL CABLE IS REQUIRED)

20 AMPS (250V TWIST LOCK)	\$300	\$350	
30 AMPS (250V TWIST LOCK)	\$380	\$440	
60 AMPS (250V STRAIGHT BLADE 60AMP PLUG)	\$440	\$510	

#### ONSITE SERVICE CALL

PLEASE NOTE: FOR GFI POWER, EXHIBITOR MUST SUPPLY TAIL WITH CORRECT PLUG TO REACH BACK OF BOOTH. IF SUFFICIENT POWER IS NOT ORDERED FOR YOUR REQUIREMENTS OR WRONG PLUGS ARE SUPPLIED, AN ONSITE CHARGE WILL APPLY.

ON - SITE SERVICE CALL (MIN \$65)		\$65/HR	
-----------------------------------	--	---------	--

#### EXTENSION CORDS\*

25 FT LONG TRIPLEX EXTENSION CORD	\$15	\$20	
50 FT LONG TRIPLEX EXTENSION CORD	\$15	\$20	
POWER BAR	\$15	\$20	

\*POWER IS NOT INCLUDED IN RENTAL OF EXTENSION CORD OR POWER BAR

#### LIGHTING\*

	ADV	REGULAR	TOTAL
TWO - 150 WATT FLOODLIGHTS (INCLUDES STAND)	\$55	\$70	
30 WATT LED LIGHT (RECOMMENDED FOR LARGER AREA OR TENT)	\$60	\$75	

\*POWER IS NOT INCLUDED IN RENTAL OF LIGHTS

#### SPECIAL INSTRUCTIONS

<b>WE ACCEPT VISA/MASTERCARD/AMERICAN EXPRESS</b>		<b>SUBTOTAL</b>	
<b>EXPIRY DATE:</b> MONTH _____ YEAR _____		(R 105 085 260) <b>GST (5%)</b>	
<b>CARD #</b> _____		<b>ORDER TOTAL</b>	
<b>AUTHORIZING SIGNATURE:</b> _____	A 25% ADMINISTRATION FEE WILL BE APPLIED TO ALL ORDERS RECEIVED AND THEN CANCELLED. IF SERVICE HAS BEEN PROVIDED, PAYMENT IN FULL WILL BE APPLIED. PRICING WILL BE ADJUSTED ON ALL ORDERS RECEIVED WITH INACCURATE PRICING OR RECEIVED AFTER ADVANCED DEADLINE. REFUND REQUESTS MUST BE COMPLETED ONSITE.		
<b>EMAIL RECEIPT COPY</b> <input type="checkbox"/>	<b>FAX RECEIPT COPY</b> <input type="checkbox"/>	(PLEASE CHECK BOX)	



# Banners, Flags & Pop Ups

8599 - 111 Street Fort Saskatchewan, AB. T8L 4S1  
 Ph: 780.992.0404 Fax: 780.992.0406 Toll - Free: 888.417.4449  
 Email: info@superiorshow.com Website: www.superiorshow.com

*Your Success is Our Reputation!*

PLEASE RETURN BY FAX OR EMAIL

<b>COMPANY:</b>		<b>CONTACT:</b>		<b>SHOW NAME:</b> Lloydminster Showcase April 1-3, 2016 Lloydminster, Alberta	<b>BOOTH #</b>
<b>ADDRESS:</b>		<b>CITY:</b>			
<b>PROV/STATE:</b>	<b>POSTAL/ZIP:</b>	<b>PHONE:</b>			
<b>EMAIL:</b>		<b>FAX:</b>			

## PURCHASE PRICING

**ALL ORDERS MUST BE CONFIRMED WITH PAYMENT AT LEAST ONE MONTH IN ADVANCE OF THE SHOW. AS THIS IS A PURCHASE, PLEASE BE AWARE THAT DUE TO POSSIBLE DELAYS IN MANUFACTURE OR SHIPPING. WE CAN NOT GUARANTEE DELIVERY TO THE SHOW IF NOT ORDERED FAR ENOUGH IN ADVANCE.**

ADDITIONAL STYLES AVAILABLE, PLEASE CALL OUR OFFICE TOLL-FREE AT 1-888-417-4449 OR EMAIL INFO@SUPERIORSHOW.COM FOR MORE INFORMATION.

HANGING HALO SIGNS	ADV	TOTAL
<b>8' WIDE X 2.5' HIGH CIRCULAR HANGING SIGN</b>	\$2,700	



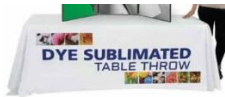
INCLUDES 8' DIAMETER CIRCLE FRAME, 1-SIDED GRAPHIC, AND CARRYING BAG

<b>8' WIDE X 3' HIGH TRIANGULAR HANGING SIGN</b>	\$2,500	
--	---------	--



INCLUDES 8' DIAMETER TRIANGLE FRAME, 1-SIDED GRAPHIC, AND CARRYING BAG

BRANDED TABLE COVERS	ADV	TOTAL
<b>PREMIUM FULL GRAPHIC TABLE COVER FOR 8'X24" TABLE</b>	\$800	



APPROX. GRAPHIC SIZE 150.5"X84" HIGH  
INCLUDES TABLE COVER AND CARRY BAG

<b>STRETCHFIT TABLE COVER WITH 2 COLOUR LOGO FOR 8' X 24" TABLE</b>	\$700	
---	-------	--



APPROX. GRAPHIC SIZE 40" X 20"  
INCLUDES TABLE COVER AND CARRY BAG

<b>STRETCH FULL GRAPHIC TABLE COVER FOR 30" DIAMETER (42" HIGH TABLE)</b>	\$750	
---	-------	--



INCLUDES FULL GRAPHIC STRETCH COVER AND CARRY BAG

OUTDOOR DISPLAYS	ADV	TOTAL
<b>10' HIGH FEATHER OUTDOOR FLAG DISPLAY</b>	\$850	



APPROX. 10' HIGH DISPLAY WITH APPROX. 26" X 86" DOUBLE-SIDED FULL GRAPHIC MESH FLAG W/LIGHT BLOCKER  
INCLUDES SPIKE FOR SOFT GROUND, FLOOR BASE, GRAPHICS AND CARRY BAG

<b>16' HIGH STRAIGHT OUTDOOR FLAG DISPLAY</b>	\$950	
---	-------	--



APPROX. 17' HIGH DISPLAY WITH APPROX. 36" X 151" DOUBLE-SIDED FULL GRAPHIC MESH FLAG W/LIGHT BLOCKER  
INCLUDES SPIKE FOR SOFT GROUND, FLOOR BASE, GRAPHICS AND CARRY BAG

## DESIGN CHARGES

\*IF GRAPHICS ARE NOT SUPPLIED PRINT-READY, ADDITIONAL DESIGN CHARGES WILL APPLY. SEE SIGNAGE ORDER FORM FOR PRICING DETAILS.

<b>WE ACCEPT VISA/MASTERCARD/AMERICAN EXPRESS</b>		<b>SUBTOTAL</b>	
<b>EXPIRY DATE:</b> MONTH _____ YEAR _____		(R 105 085 260) <b>GST (5%)</b>	
<b>CARD #</b> _____		<b>ORDER TOTAL</b>	

**AUTHORIZING SIGNATURE:** \_\_\_\_\_

EMAIL RECEIPT COPY  FAX RECEIPT COPY  (PLEASE CHECK BOX)

NO REFUNDS. PRICING WILL BE ADJUSTED ON ALL ORDERS RECEIVED WITH INACCURATE PRICING.



# Signage & Graphics Order Form

8599 - 111 Street Fort Saskatchewan, AB. T8L 4S1  
 Ph: 780.992.0404 Fax: 780.992.0406 Toll - Free: 888.417.4449  
 Email: info@superiorshow.com Website: www.superiorshow.com

*Your Success is Our Reputation!*

PLEASE RETURN BY FAX OR EMAIL

<b>COMPANY:</b>		<b>CONTACT:</b>	<b>SHOW NAME:</b>	<b>BOOTH #</b>
<b>ADDRESS:</b>		<b>CITY:</b>	Lloydminster Showcase	
<b>PROV/STATE:</b>	<b>POSTAL/ZIP:</b>	<b>PHONE:</b>	April 1-3, 2016	
<b>EMAIL:</b>		<b>FAX:</b>	Lloydminster, AB/SK	

**SIGNAGE PRICING** FOR CUSTOM/REPRODUCTION GRAPHIC DESIGN, PLEASE CONTACT OUR OFFICE TO RECEIVE YOUR QUOTE.

BANNER STANDS	ADVANCE PRICE	SIZE	TOTAL
SINGLE SIDED BANNER STAND	\$325	APPROX. 33" WIDE X 78" HIGH	
INCLUDES: RETRACTABLE BANNER STAND, GRAPHICS AND CARRYING BAG			
SINGLE SIDED WIDE BASE BANNER STAND	\$400	APPROX. 33" WIDE X 78" HIGH	
INCLUDES: RETRACTABLE BANNER STAND, GRAPHICS AND CARRYING BAG			
DOUBLE SIDED BANNER STAND	\$575	APPROX. 33" WIDE X 79" HIGH	
INCLUDES: RETRACTABLE BANNER STAND, GRAPHICS AND CARRYING BAG			
MATERIAL	ADVANCE PRICE PER SQ.FT.	SIZE	TOTAL
COROPLAST	\$8	SIZE: ____ FT. WIDE X ____ FT. HIGH = ____ SQ.FT.	
LIGHT WEIGHT CORRUGATED PLASTIC (EASY TO CLEAN)			
SINTRA	\$10	SIZE: ____ FT. WIDE X ____ FT. HIGH = ____ SQ.FT.	
HEAVIER PVC MATERIAL (EASY TO CLEAN)			
WHITE 13 OZ. BANNER	\$13	SIZE: ____ FT. WIDE X ____ FT. HIGH = ____ SQ.FT.	
INCLUDES GROMMETS. AVAILABLE HEIGHTS: 2', 3' & 4'			
GRAPHICS ON VINYL	\$7.50	SIZE: ____ FT. WIDE X ____ FT. HIGH = ____ SQ.FT.	
READY TO PRINT FULL COLOUR GRAPHIC ON VINYL. PREMASKED. APPLICATION NOT INCLUDED.			
CUSTOM GRAPHIC DESIGN (MIN 1HR)	\$60/hr		

**IF GRAPHICS ARE NOT SUPPLIED PRINT-READY, GRAPHIC DESIGN CHARGES WILL APPLY.**

**SPECIAL INSTRUCTIONS; PLEASE DRAW IN HOW YOU WOULD LIKE THE GENERAL PLACEMENT OF THE TEXT ON THE SIGN AND WHAT KIND OF FONT YOU WOULD LIKE THE TEXT TO BE**

<b>WE ACCEPT VISA/MASTERCARD/AMERICAN EXPRESS</b>		<b>SUBTOTAL</b>
<b>EXPIRY DATE:MONTH:</b> _____ <b>YEAR:</b> _____	(R 105 085 260)	<b>GST (5%)</b>
<b>CARD #</b> _____	<b>ORDER TOTAL</b>	
<b>AUTHORIZING SIGNATURE:</b> _____	A 25% ADMINISTRATION FEE WILL BE APPLIED TO ALL ORDERS RECEIVED AND THEN CANCELLED. NO REFUNDS ONCE GRAPHICS HAVE BEEN SENT TO PRINT. PRICING WILL BE ADJUSTED ON ALL ORDERS RECEIVED WITH INACCURATE PRICING OR RECEIVED AFTER ADVANCED DEADLINE.	
<b>EMAIL RECEIPT</b> <input type="checkbox"/>	<b>FAX RECEIPT</b> <input type="checkbox"/>	(PLEASE CHECK BOX)



# Modular Exhibit Rental Order Form

8599 - 111 Street Fort Saskatchewan, AB. T8L 4S1  
 Ph: 780.992.0404 Fax: 780.992.0406 Toll - Free: 888.417.4449  
 Email: info@superiorshow.com Website: www.superiorshow.com

*Your Success is Our Reputation!*

PLEASE RETURN BY FAX OR EMAIL

<b>COMPANY:</b>		<b>CONTACT:</b>		<b>SHOW NAME:</b> Lloydminster Showcase April 1-3, 2016 Lloydminster, AB/SK	<b>BOOTH #</b>
<b>ADDRESS:</b>		<b>CITY:</b>			
<b>PROV/STATE:</b>	<b>POSTAL/ZIP:</b>	<b>PHONE:</b>			
<b>EMAIL:</b>		<b>FAX:</b>			

## BOOTH PRICING

PLEASE NOTE: **ADVANCED PRICING IS AVAILABLE ON ORDERS RECEIVED 14 DAYS BEFORE SHOW START DATE.**  
 FOR A CUSTOM MODULAR BOOTH DESIGN OR SLATWALL, PLEASE CONTACT OUR OFFICE TO RECEIVE YOUR QUOTE & 3D DRAWING.

### MODULAR EXHIBIT WITH SINTRA PANELS

QTY	BOOTH #	DIMENSIONS	ADV	REGULAR	TOTAL
	1	10' X 10' (1 HEADER SIGN)	\$1,100	\$1,325	
	2	10' X 10' (3 HEADER SIGNS)	\$1,250	\$1,525	
	3	10' X 10' (0 HEADER SIGNS)	\$1,250	\$1,525	
	4	10' X 10' (3 HEADER SIGNS)	\$1,250	\$1,525	
	5	10' X 20' (3 HEADER SIGNS)	\$1,700	\$2,100	
	6	10' X 20' (3 HEADER SIGNS)	\$1,800	\$2,200	
	7	10' X 20' (2 HEADER SIGNS)	\$1,900	\$2,350	
	8	10' X 20' (4 HEADER SIGNS)	\$2,650	\$3,250	
	9	20' X 20' (6 HEADER SIGNS)	\$2,850	\$3,450	

ALL MODULAR EXHIBITS INCLUDE: INSTALL/DISMANTLE, SINTRA PANELS IN YOUR COLOUR CHOICE, HEADER SIGNAGE WITH BASIC FONT VINYL LETTERING.

SINTRA PANEL COLOUR CHOICE: \_\_\_\_\_ WHITE \_\_\_\_\_ BLACK

UPGRADE TO VELCRO COMPATIBLE PANELS, ADDITIONAL 25% CHARGE

### HEADER SIGN TO READ:

### MODULAR EXHIBIT ACCESSORIES

	SPOTLIGHT	\$60	\$72	
	WOOD SHELF (39 INCHES WIDE X 12 INCHES DEEP)	\$25	\$40	
	GLASS SHELF (39 INCHES WIDE X 12 INCHES DEEP)	\$35	\$50	
	R8 TV BRACKET (HOLDS UP TO 42" TV)	\$250	\$325	

### EXHIBIT SIGNAGE AND GRAPHICS

	ADDITION OF YOUR COMPANY LOGO* TO HEADER SIGNAGE. PRICED PER HEADER	\$75	N/A	
*IF LOGO SUPPLIED IN .EPS VECTOR FORMAT. IF WRONG FORMAT SUPPLIED, DESIGN CHARGES MAY APPLY				
	FULL GRAPHIC COUNTER PANEL (970MM X 920MM) SUPPLIED PRINT READY	\$113	N/A	
	FULL GRAPHIC PANEL ON SINTRA(970MM X 2400MM) SUPPLIED PRINT READY	\$210	N/A	
ALL GRAPHICS ON A CURVE MUST BE PRINTED ON SINTRA				

PLEASE CHECK YES, IF YOU WILL BE KEEPING YOUR GRAPHIC PANELS \_\_\_\_\_ YES \_\_\_\_\_ NO

SUPERIOR SHOW SERVICE WILL DISMANTLE YOUR EXHIBIT AS SOON AS POSSIBLE IF PANELS ARE TO BE KEPT. AFTER DISMANTLE, CUSTOMER IS RESPONSIBLE FOR PANELS AND ALL PACKAGING AND SHIPPING ARRANGEMENTS. ALL GRAPHIC PANELS REMAINING AT END OF MOVE-OUT WILL BE DESTROYED.

DESIGN CHARGES PER HOUR (IF REQUIRED) (MIN \$60) \$60 N/A

### SPECIAL INSTRUCTIONS

### WE ACCEPT VISA/MASTERCARD/AMERICAN EXPRESS

EXPIRY DATE: MONTH \_\_\_\_\_ YEAR \_\_\_\_\_

CARD # \_\_\_\_\_

AUTHORIZING SIGNATURE: \_\_\_\_\_

EMAIL RECEIPT COPY  FAX RECEIPT COPY  (PLEASE CHECK BOX)

### SUBTOTAL

(R 105 085 260) GST (5%)

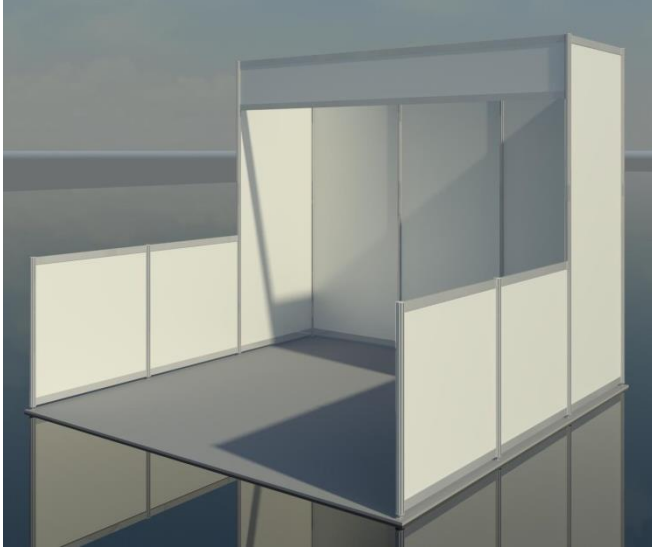
### ORDER TOTAL

A 25% ADMINISTRATION FEE WILL BE APPLIED TO ALL ORDERS RECEIVED AND THEN CANCELLED. IF SERVICE HAS BEEN PROVIDED, PAYMENT IN FULL WILL BE APPLIED. PRICING WILL BE ADJUSTED ON ALL ORDERS RECEIVED WITH INACCURATE PRICING OR RECEIVED AFTER ADVANCED DEADLINE. REFUND REQUESTS MUST BE COMPLETED ONSITE.

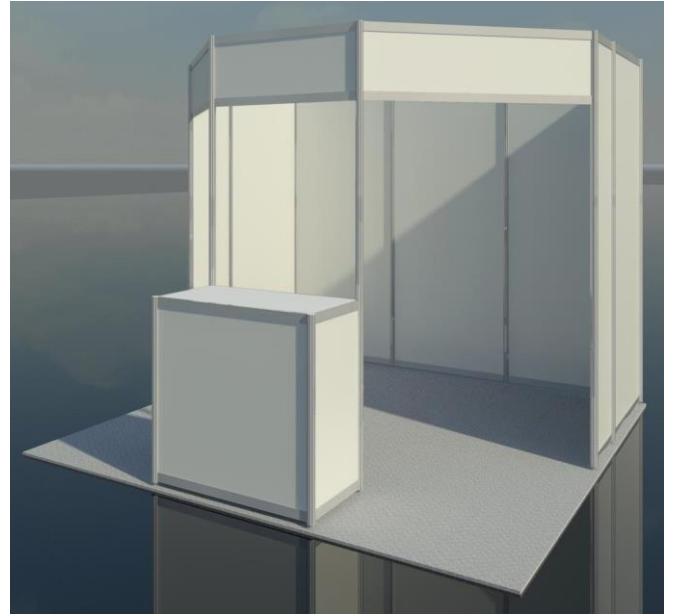


*Your Success is Our Reputation!*

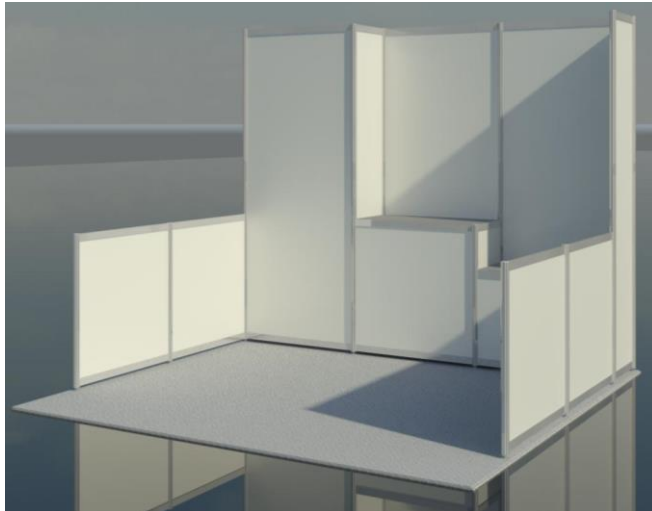
**BOOTH #1 (10' WIDE X 10' DEEP)**



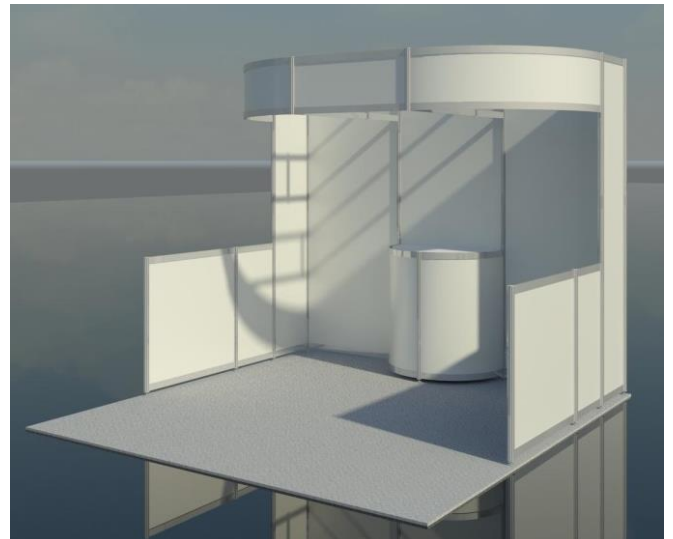
**BOOTH #2 (10' WIDE X 10' DEEP)**



**BOOTH #3 (10' WIDE X 10' DEEP)**



**BOOTH #4 (10' WIDE X 10' DEEP)**



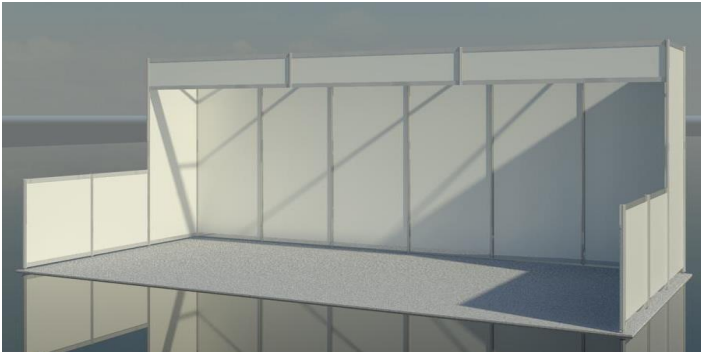
**ALL EXHIBIT RENTALS INCLUDE THE FOLLOWING;  
INSTALL AND DISMANTLE  
YOUR CHOICE OF WHITE OR BLACK SINTRA  
BASIC HEADER SIGNS  
CARPET IN YOUR COLOUR CHOICE**



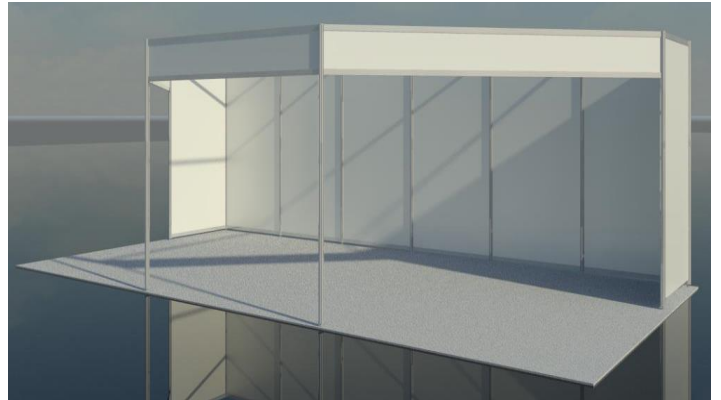


*Your Success is Our Reputation!*

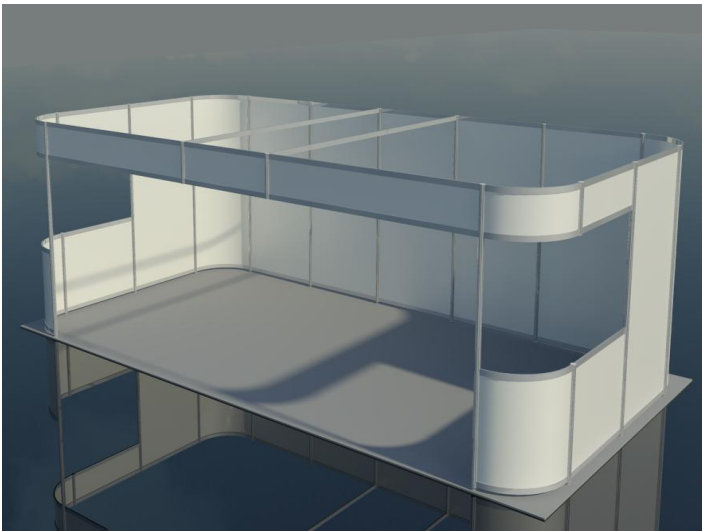
**BOOTH # 5 (20' WIDE X 10' DEEP)**



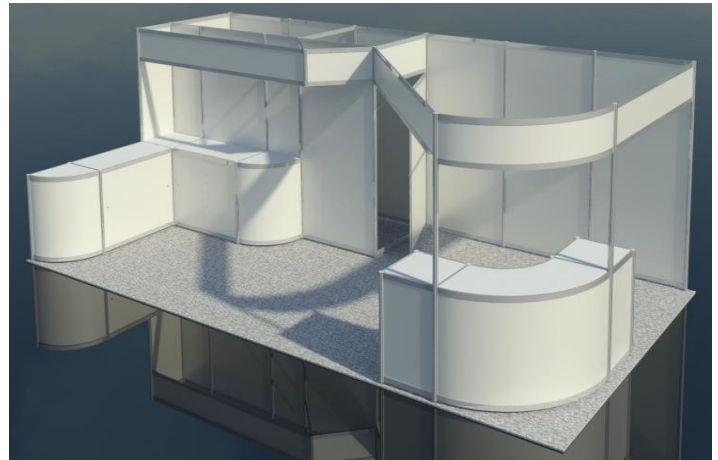
**BOOTH #6 (20' WIDE X 10' DEEP)**



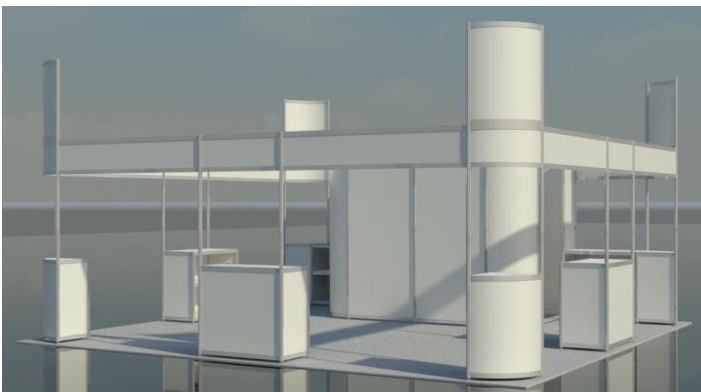
**BOOTH # 7 (20' WIDE X 10' DEEP)**



**BOOTH #8 (20' WIDE X 10' DEEP)**



**BOOTH #9 ( 20' WIDE X 20' DEEP)**



**ALL EXHIBIT RENTALS INCLUDE THE FOLLOWING;  
INSTALL AND DISMANTLE  
YOUR CHOICE OF WHITE OR BLACK SINTRA  
BASIC HEADER SIGNS  
CARPET IN YOUR COLOUR CHOICE**