

LINDY®

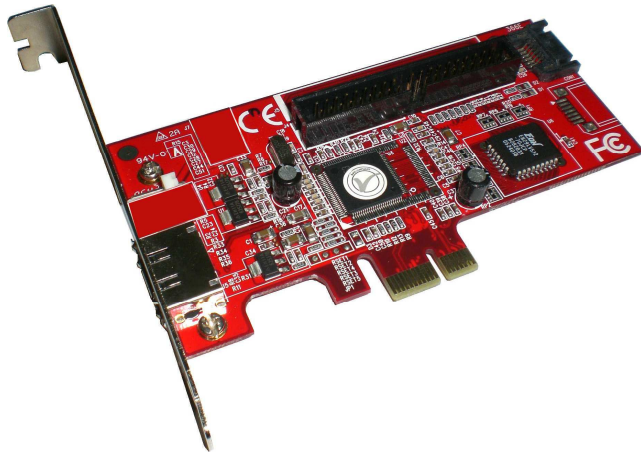
CONNECTION PERFECTION

PCIe Card

2 Ports SATA II & 1 Port PATA

User Manual

English



LINDY No. 51125

www.LINDY.com



Overview

The SATA PCI Express Card provides two-port SATA II and one-port PATA connectivity. The card supports both AHCI and Legacy IDE controller to increase system feasibility, including Native Command Queuing (NCQ), Hot Plugging, ATAPI Device Supporting, Port Multiplier with Command-based Switching Supporting, Programmable Output Swing Control to fit SATA II Gen2i and Gen2m (External SATA Connection, eSATA). It features PCI Express bus and Serial ATA II interface to express high performance storage devices.

SATA II/PATA

- Supports 2-port 3.0Gbps SATA II interface
- Supports two independent SATA II channels (separate logic and FIFO)
- Supports Native Command Queue (NCQ) on SATA II port
- Supports SATA II Gen2i and Gen2m (External SATA Connection, eSATA)
- Supports Port Multiplier with Command-based Switching on SATA II port
- Supports up to UDMA6 transfer mode of PATA
- Supports up to 4 storage device connection
- Supports up to 0,1,0+1,JBOD RAID function

PCI Express

- Supports 1-Lane 2.5Gbps PCI Express bus
- Internal native interface multiplexed to 2-port SATA II and 1-port PATA
- All registers accessible in unified memory space

Overall

- Integrated 1-Lane PCI Express PHY and 2-port SATA II PHY
- Integrated two PLL for both PCI Express bus and SATA II interface
- Output swing control and Automatic impedance calibration for both PCI Express and **SATA II PHY**
- Supports up to 64K Byte external Flash for BIOS expansion
- Supports a slave SMBus interface (follow **System Management Bus Specification Revision 1.1**)
- Fabricated 0.18um/3.3V UMC CMOS Standard Logic Process with 1.8V and 3.3V
- Available in 100-pin LQFP package
- Pin compatible with JMB361 (1-port SATA II & 1-port PATA Host Controller)

RAID AP

- Supports RAID 0,1,0+1 & JBOD. From user's viewpoint, a windows AP provides facility to manage RAID built on 363. Support Windows 2000/XP/2003 RAID AP to user in order to manage RAID function easier.

System Requirements

Hardware:

- A Pentium® IV or later, Pentium® compatible computer
- One PCI-E slot
- This I/O card requires an available PCI-E slot inside your computer.

Systems supported:

- Windows® 2000/XP/Server 2003

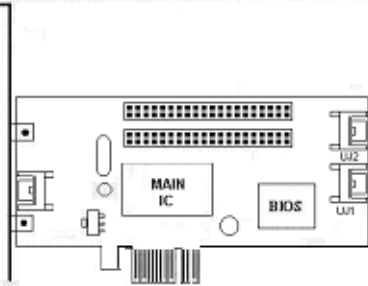
Package Contents

This PCI USB Card package includes the following:

- Installation Guide
- CD Driver

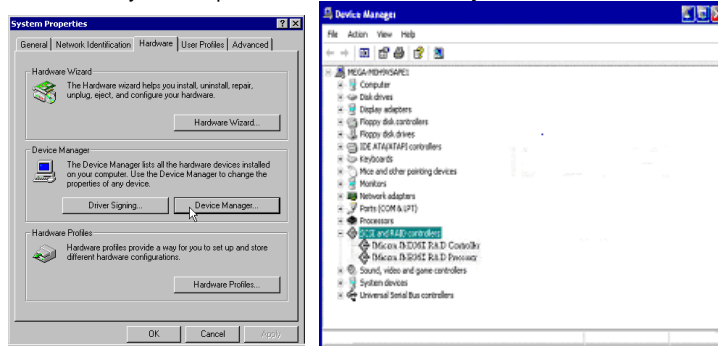
Configuration

The Serial ATA PCI Card



Windows® 2000 Drivers Installation Instructions

1. Insert the card to computer PCI-E slot
2. Power on your computer with Windows 2000 system



3. Run the **D:(CD ROM) Setup** program.
4. This program will copy driver files into your Windows system. Once the files have been

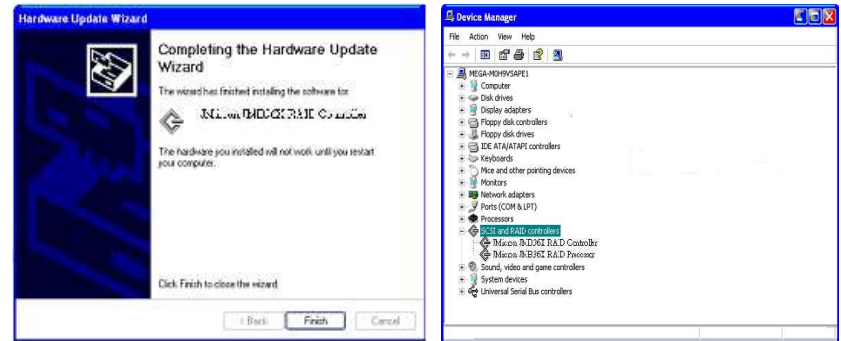
- copied, restart your computer as prompted.
5. After system reboots, Windows will find the new hardware "**RAID Controller**" and install the driver.
6. Restart the computer again to complete the installation.

To verify successful installation in Windows 2000:

1. From the main desktop, click on "**My Computer**", then double-click on "**Control Panel, System**", and "**Device Manager**".
2. Double-click on "**SCSI & RAID**", you should find "**JMicron JMB36X RAID Controller**" or "**JMicron JMB36X RAID Processor**". The RAID card is now ready to use.

Windows XP Driver installation

1. Insert the card to computer PCI-E slot.
2. Power ON your computer with Windows XP.
3. Run the **D:(CD ROM) Setup** program.
4. This program will copy driver files into your Windows system. Once the files have been copied, restart your computer as prompted.
5. After system reboots, Windows will find the new hardware "**RAID Controller**" and install the driver.
6. Restart the computer again to complete the installation.



To verify successful installation in Windows® XP:

1. From the main desktop, click on "**My Computer**", then double-click on "**Control Panel, System**", and "**Device Manager**".
2. Double-click on "**SCSI & RAID**", you should find "**JMicron JMB36X RAID Controller**" or "**JMicron JMB36X RAID Processor**". The RAID card is now ready to use.

Windows Server 2003 Driver installation

1. Insert the card to computer PCI-E slot.
2. Power ON your computer with Windows 2003.
3. Run the **D:(CD ROM) Setup** program.
4. This program will copy driver files into your Windows system. Once the files have been copied, restart your computer as prompted.
5. After system reboots, Windows will find the new hardware "**RAID Controller**" and install the driver.

6. Restart the computer again to complete the installation.

To verify successful installation in Windows server 2003:

1. From the main desktop, click on "My Computer", then double-click on "Control Panel, System", and "Device Manager".
2. Double-click on "SCSI & RAID", you should find "JMicron JMB36X RAID Controller" or "JMicron JMB36X RAID Processor". The RAID card is now ready to use.

CE Statement

This device complies with the European Regulations for Electromagnetic Compatibility (EMC) of the European Union and it is equipped with the CE mark. This unit has to be used with high quality shielded connection cables. Only if such high quality shielded cables are used can you be sure that the EMC compatibility is not adversely influenced.

FCC Statement

Shielded cables must be used with this equipment to maintain compliance with radio frequency energy emission regulations and ensure a suitably high level of immunity to electromagnetic disturbances.

FCC Warning

This equipment has been tested and found to comply with the limits for a Class B Digital device, pursuant to part 15 of the FCC Rules. These limits are designed to provide reasonable protection against harmful interference in a residential installation. This equipment generates, uses, and can radiate radio frequency energy and, if not installed and used in accordance with the instructions, may cause harmful interference to radio communications. However, there is no guarantee that interference will not occur in a particular installation. If this equipment does cause harmful interference to radio or television reception, which can be determined by turning the equipment off and on, the user is encouraged to try to correct the interference by one or more of the following measures:

- Reorient or relocate the receiving antenna
- Increase the separation between the equipment and receiver
- Connect the equipment into an outlet on a circuit different from that to which the receiver is connected
- Consult the dealer or an experienced technician for help

You are cautioned that changes or modifications not expressly approved by the party responsible for compliance could void your authority to operate the equipment.



**WEEE (Waste of Electrical and Electronic Equipment),
Recycling of Electronic Products**

United Kingdom

In 2006 the European Union introduced regulations (WEEE) for the collection and recycling of all waste electrical and electronic equipment. It is no longer allowable to simply throw away electrical and electronic equipment. Instead, these products must enter the recycling process.

Each individual EU member state has implemented the WEEE regulations into national law in slightly different ways. Please follow your national law when you want to dispose of any electrical or electronic products.

More details can be obtained from your national WEEE recycling agency.

Germany / Deutschland

Die Europäische Union hat mit der WEEE Richtlinie umfassende Regelungen für die Verschrottung und das Recycling von Elektro- und Elektronikprodukten geschaffen. Diese wurden von der Bundesregierung im Elektro- und Elektronikgerätegesetz – ElektroG in deutsches Recht umgesetzt.

Dieses Gesetz verbietet vom 24. März 2006 an das Entsorgen von entsprechenden, auch alten, Elektro- und Elektronikgeräten über die Hausmülltonne! Diese Geräte müssen den lokalen Sammelsystemen bzw. örtlichen Sammelstellen zugeführt werden! Dort werden sie kostenlos entgegen genommen. Die Kosten für den weiteren Recyclingprozess übernimmt die Gesamtheit der Gerätehersteller.

France

En 2006, l'union Européenne a introduit la nouvelle réglementation (WEEE) pour le recyclage de tout équipement électrique et électronique.

Chaque Etat membre de l' Union Européenne a mis en application la nouvelle réglementation WEEE de manières légèrement différentes. Veuillez suivre le décret d'application correspondant à l'élimination des déchets électriques ou électroniques de votre pays.

Italy

Nel 2006 l'unione europea ha introdotto regolamentazioni (WEEE) per la raccolta e il riciclo di apparecchi elettrici ed elettronici. Non è più consentito semplicemente gettare queste apparecchiature, devono essere riciclate.

Ogni stato membro dell' EU ha tramutato le direttive WEEE in leggi statali in varie misure. Fare riferimento alle leggi del proprio Stato quando si dispone di un apparecchio elettrico o elettronico.

Per ulteriori dettagli fare riferimento alla direttiva WEEE sul riciclaggio del proprio Stato.

