

Chapter 4

Excel form

Table of contents

Chapter 4 Excel form



Action 4-2



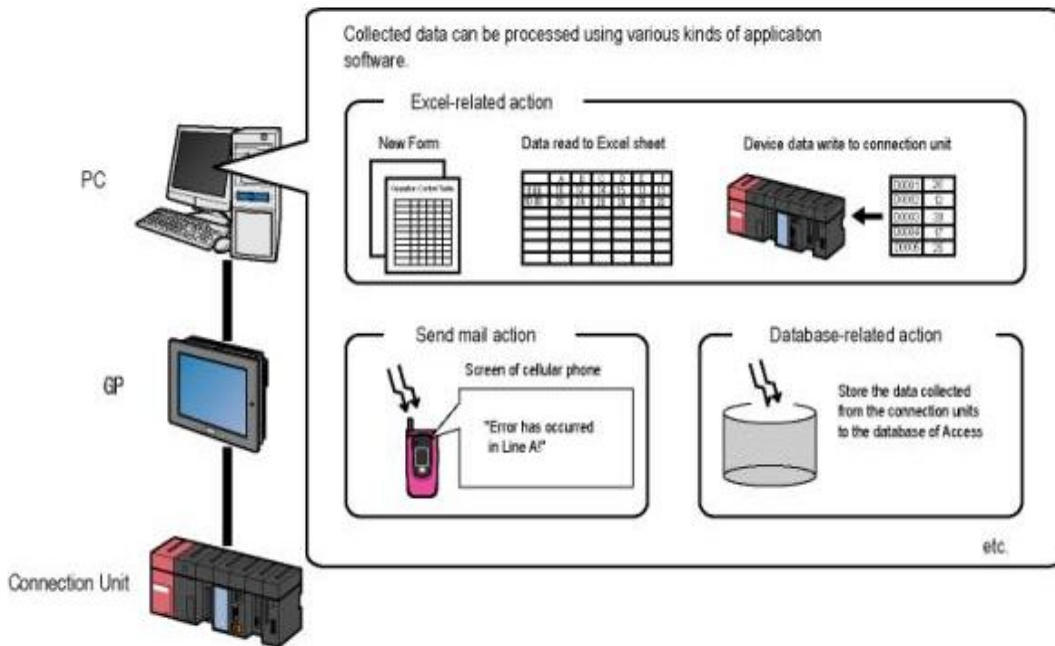
Practical work for excel form 4-3



Action

《About action》

The special processing which utilized the application software in personal computers, is called "Action." Field/site data can be linked with various software including Excel and Access.



Practical work of "logging to excel" that collects the data of connection unit on excel sheet, is performed from excel related action. Refer to Reference Manual " Chapter 5 Report to be created using Excel" for Details.



One point

To the customer who uses Microsoft Excel 2007

This function can be used even by Excel 2007.

About details, Please refer to the following .

Reference Manual Chapter5 Creating a Form Using Excel

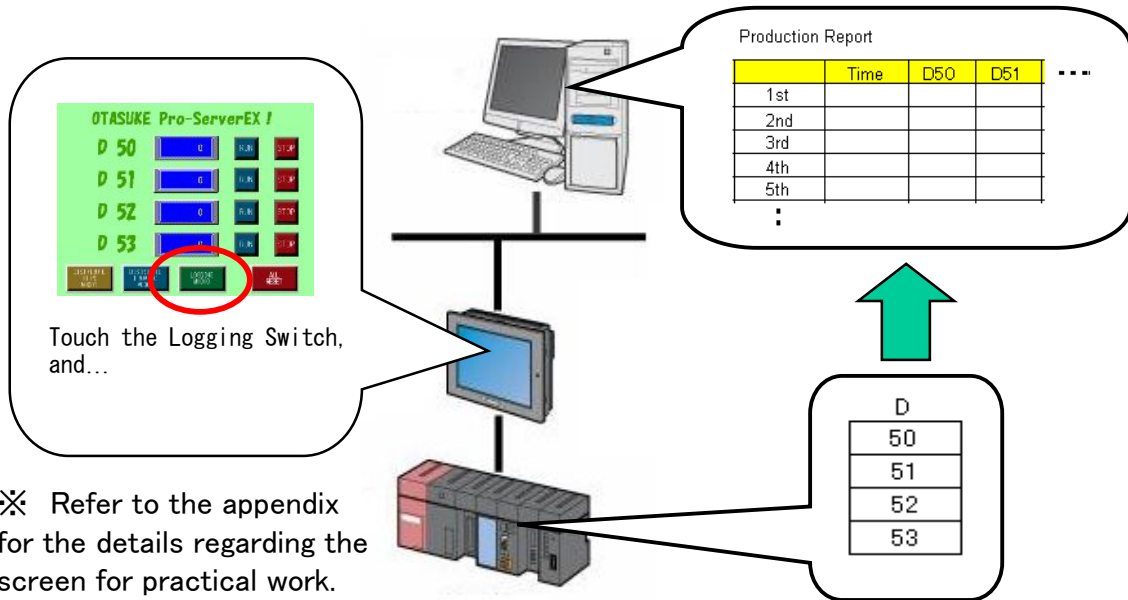
5.9 Notes of file format when using Microsoft Excel 2007



Practical work for excel form

«Action outline of practical work»

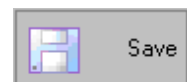
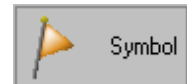
The data saved in device USR20-23 of PLC is logged to Excel on a personal computer.



«Setup steps»



- ① Create the template of Excel.
- ② Start the Pro-Studio EX and create the network project file (NPX).
(Use the items created from 1st chapter)
- ③ Register the participating node.
(Registered in Chapter 1)
- ④ Register the symbol of the device address which is to be used.
(Registered in Chapter 1)
- ⑤ Set up the feature (action and trigger conditions).
 - The area which records data on the template of ① is created.
 - Trigger conditions are set in each area.
- ⑥ Transfer NPX after performing save/reload.
- ⑦ Check the action.



→ As for the practical work from the next page,perform it ⑤ onwards after creating the template for ①, as a items in which ②~④ are already exist.

[1] The template for Excel is created as follows.

	A	B	C	D	E	F
1	Productions report					
2						
3		Time	USR20	USR21	USR22	USR23
4	1st					
5	2nd					
6	3rd					
7	4th					
8	5th					
9	6th					
10	7th					
11	8th					
12	9th					
13	10th					
14	total	0	0	0	0	0

4 words data value of D20~23 is selected in productions and it is a template for the 10th time record arranging it horizontally.

- A1 : Character "Productions report"
- B3 : Character "Time"
- C3 ~ F3(Row) : Character "USR20" "USR21" "USR22" "USR53"
- A4 ~ A12(Column) : Character "1st time" ~ "10th time"
- A14 : Character "Total"
- C14 : Total value of C4~C13
- D14 : Total value of D4~D13
- E14 : Total value of E4~E13
- F14 : Total value of F4~F13
- A3 ~ F3(Row) : Fill with yellow color
- A14 ~ F14(Row) : Fill with gray color
- A3 ~ F14(Row · Column) : Ruled line enclosed with each cell

If the above-mentioned figure is drawn, the name of "Logging template .xls" is given/attached and it will be saved at desktop.

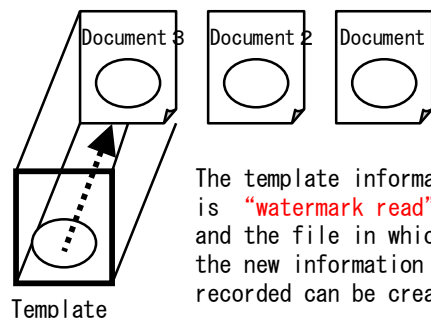


★ One point

About template

It is "Model" and "Foundation" while creating a document.

The format and function on a template, macro etc. are used, in addition to that one template is used by generating the file in which new data is recorded.

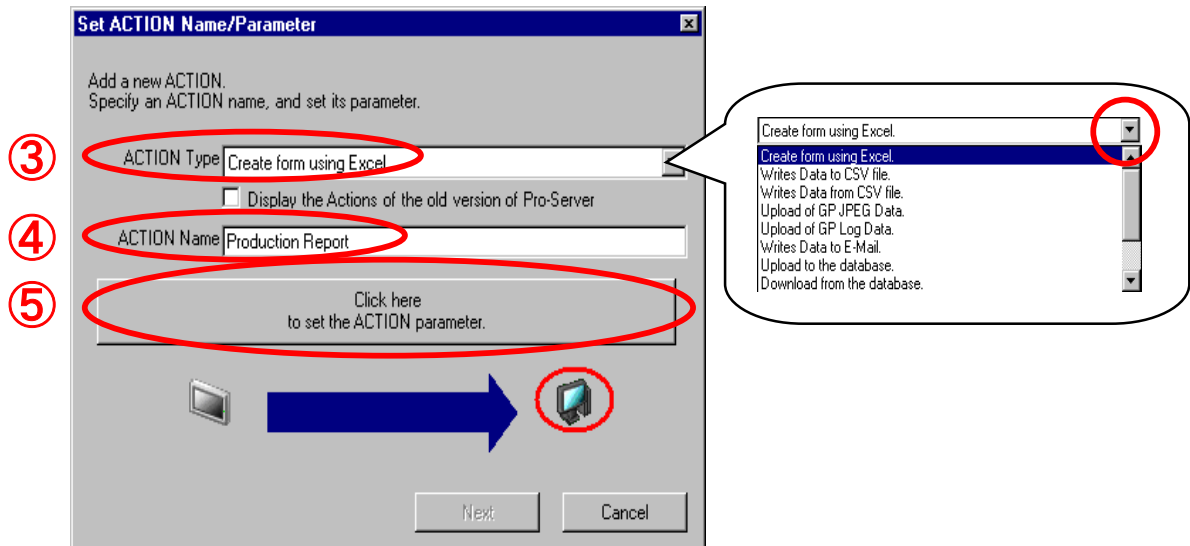
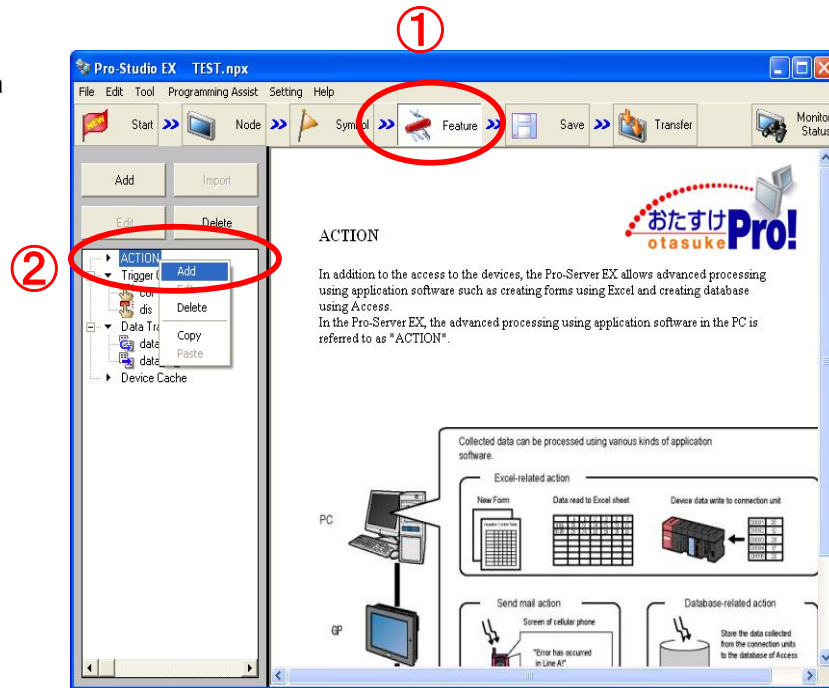


The template information is "watermark read" and the file in which the new information is recorded can be created.

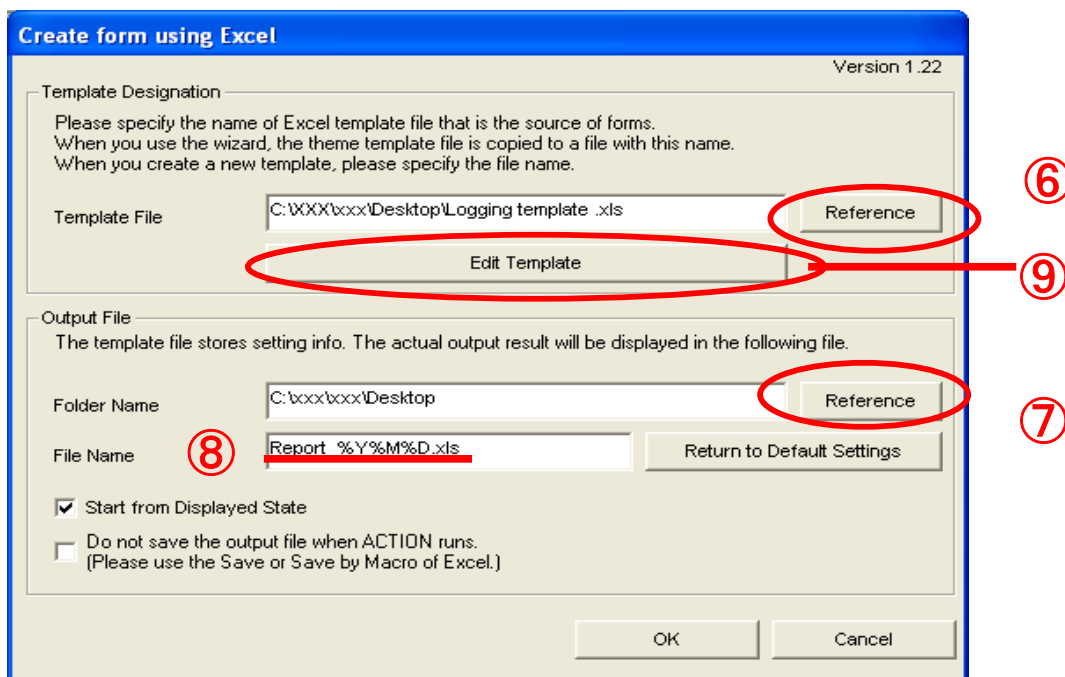
[2] Set up the action.

① Click [Feature] of a status bar.

② Right click the [Action] and click [Add].



- ③ Select [Create form using Excel] for ACTION Type.
- ④ Enter an action name as “Production Report”.
- ⑤ Click [Click here ..] button.

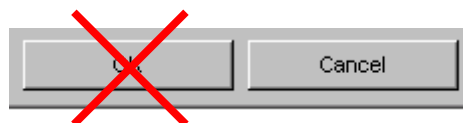


- ⑥ Click “Reference” of template file, select the template.
from P3 “Creation of a template”
C:¥ *** ¥ *** ¥Desktop¥logging template.xls
→ Enter the folder name of the personal computer (which is used for practical work) in “***.”
- ⑦ Select the desktop in the folder name of output file.
C:¥ *** ¥ *** ¥Desktop
→ Enter the folder name of the personal computer (which is used for practical work) in “***.”
- ⑧ Set the file name of output file as default.
- ⑨ Click the “edit template” button.

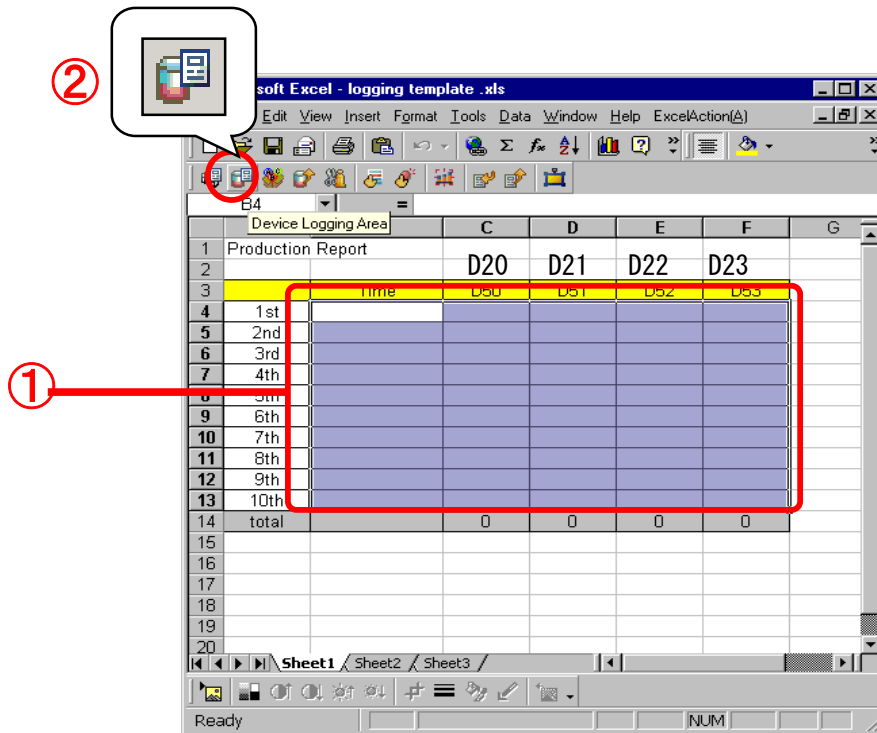


One point

Next to the setup of ⑧, click the [Edit template] of ⑨ instead of clicking the [OK] button in the lower right. By doing this, the following setup will be proceeded.



[3] Excel will get start and the following template which is created at the beginning will get opened.



- ① The range will be specified by dragging the cell from B4 to F13 on the template.
- ② Click the icon of "Device logging area" from excel action tool bar.



One point

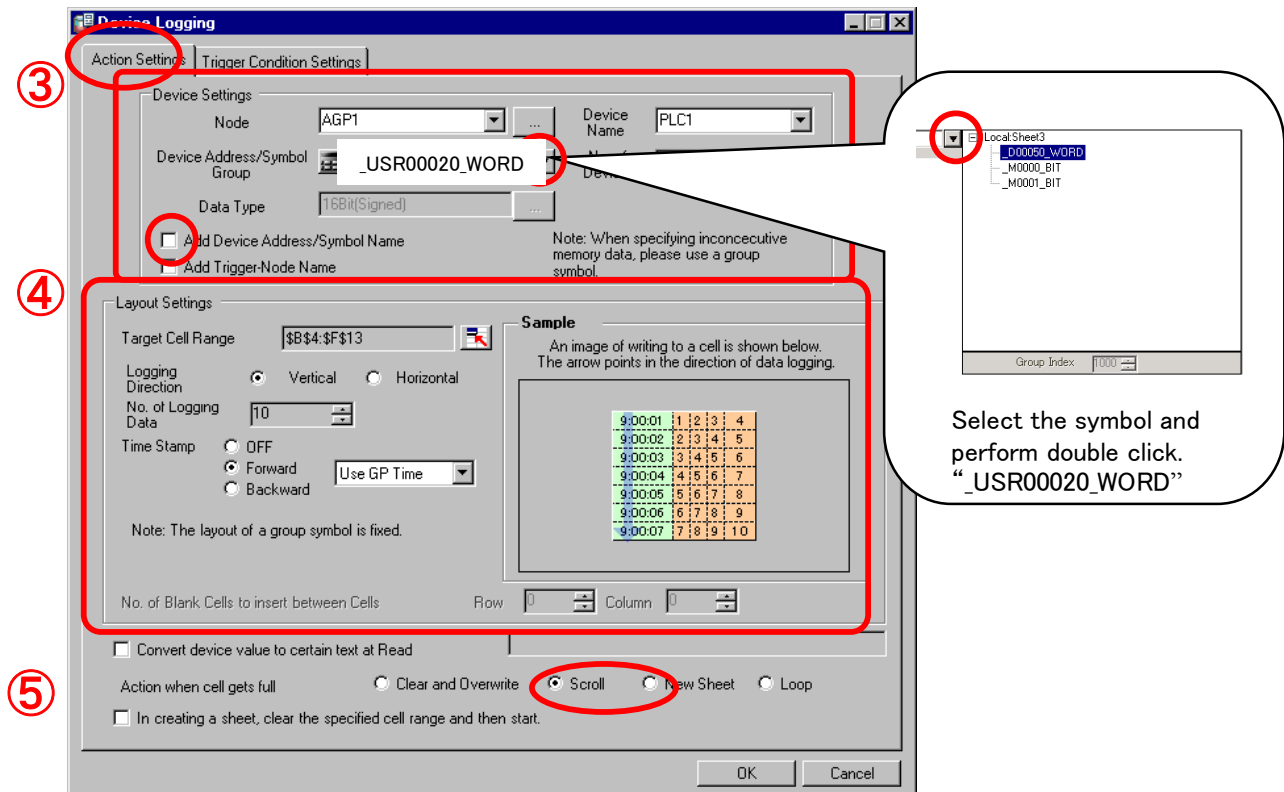
Regarding Excel action tool bar

The report with various features can be created by selecting each icon.
Refer to Reference Manual "Chapter 5 Report to be created in Excel" for Details.



Edit the device logging area

Action setting tab (it sets up which data is recorded in what way.)



③ Device setup The following items are selected from the pull down button.

Participating department : AGP1

Model name : PLC1

Device address / symbol group :_USR00020_WORD

Remove the check of "adding a device address / symbol name".

④ Layout setup

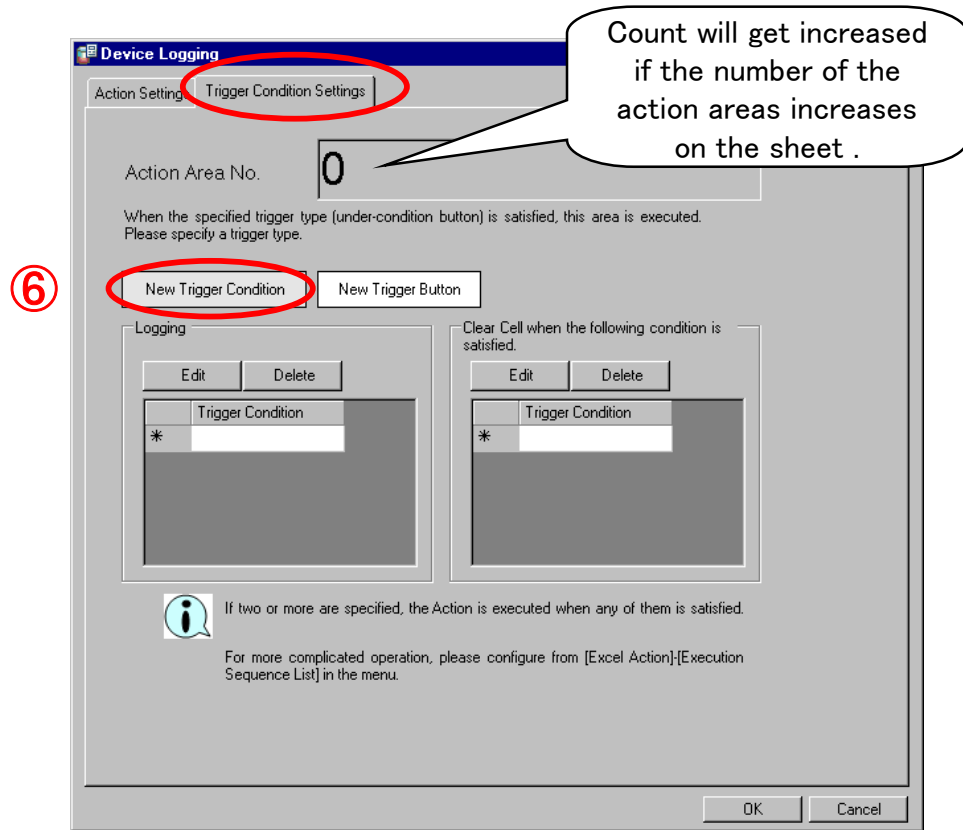
Time stamp : "Forward"

⑤ Action when cell gets full : Scroll

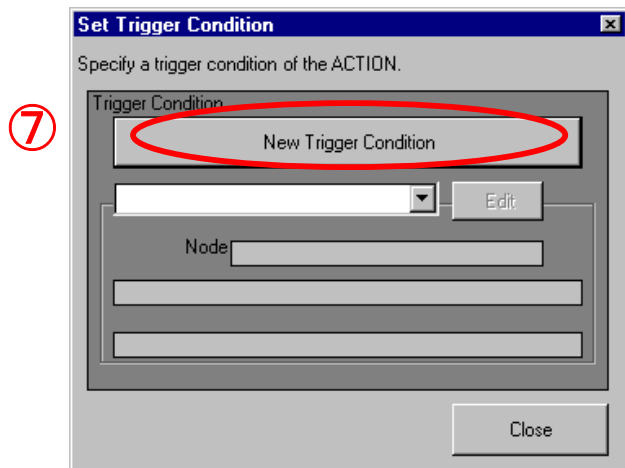
Enter other items as per above figure.

→ Next, click the "Trigger condition setup" tab.

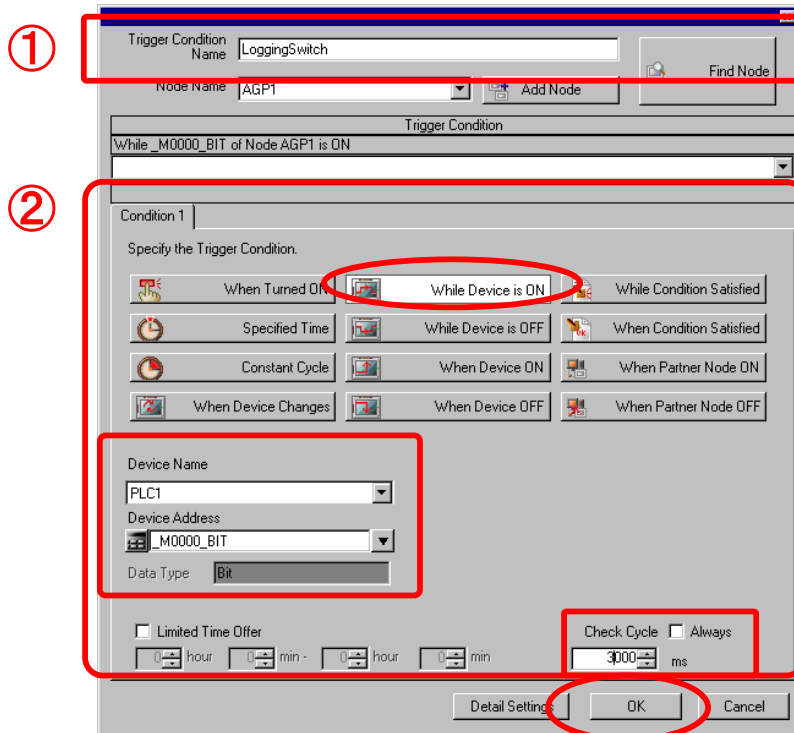
Trigger condition setting tab (the timing in which data is recorded, is set up)



⑦ Click [New trigger condition] button from “Trigger condition setup”



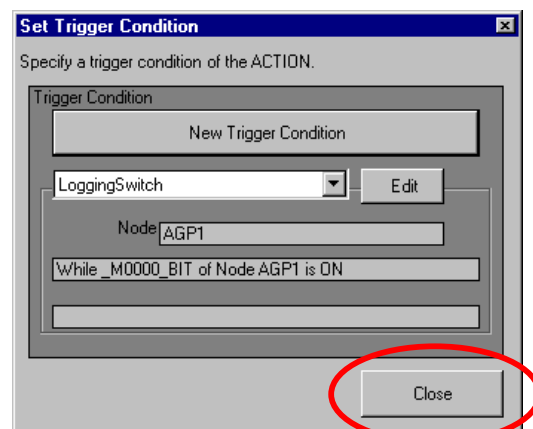
[4] Set the new trigger conditions.



- ① Name of the trigger condition:
Logging switch
Node name: AGP1
- ② Condition: “While Device is ON”
Device name: PLC1
Device address: _USR0000000_BIT
Check cycle: 3000 ms
- ③ Click [OK] button.

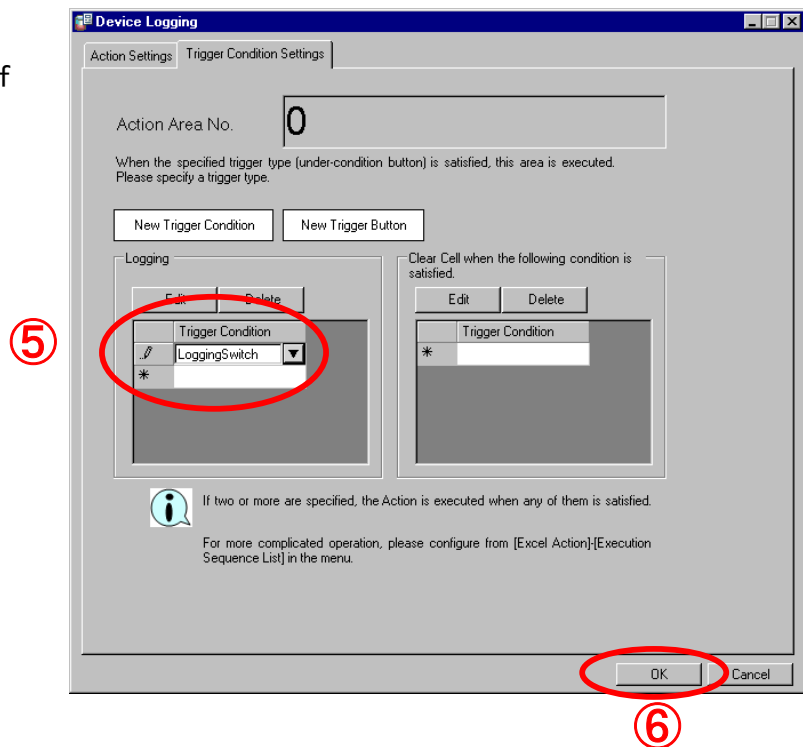
The trigger condition logging switch is created above.

- ④ Click [Close].



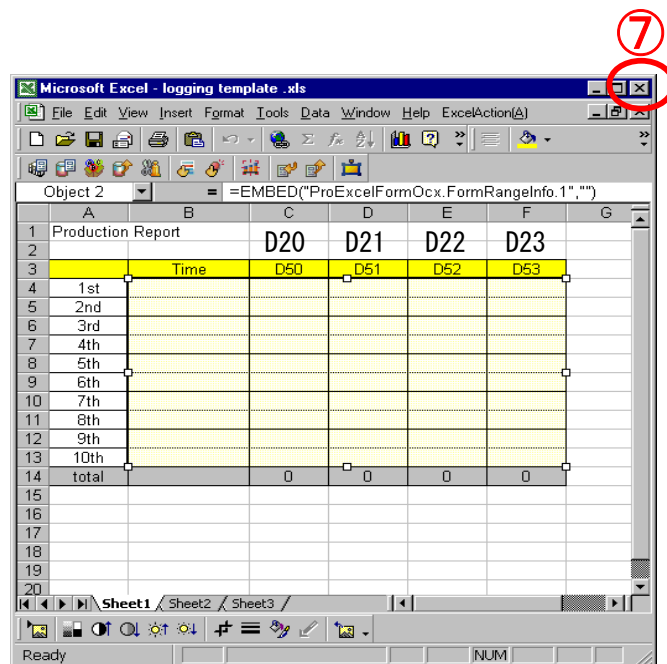
⑤ Double click the [Logging switch] from pull down button of trigger condition and select it.

⑥ Click [OK] button.

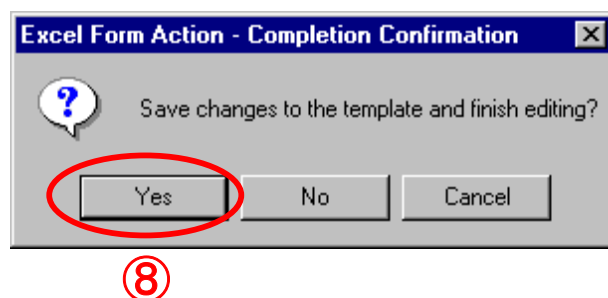


⑦ Excel will get close after clicking [X] mark icon of upper right corner of window.

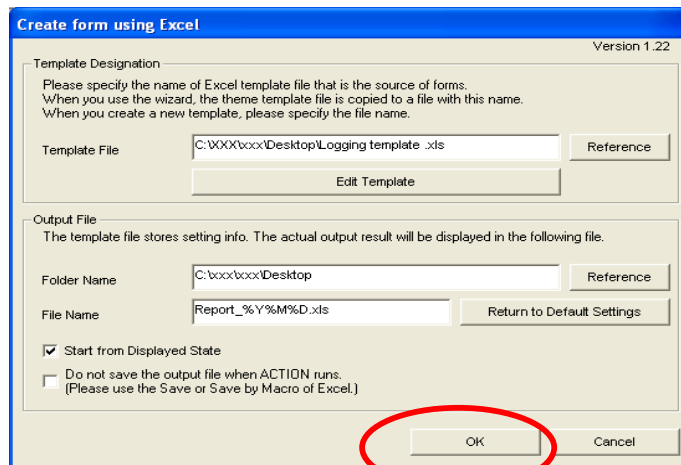
※The screen will get color in action area.



⑧ Click [Yes] in the “Completion confirmation” dialog box.

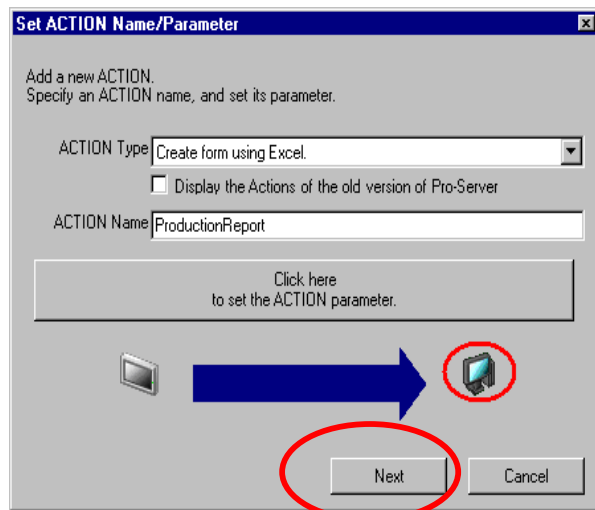


⑨ Click [OK] button in the dialog box of “create form using excel”



⑨

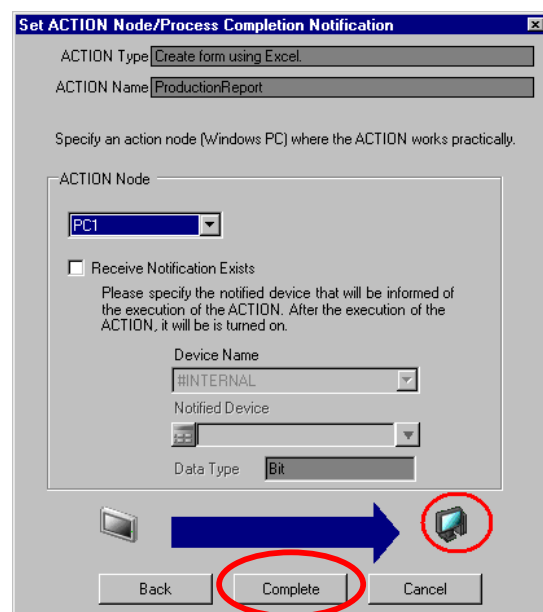
Dialog box of “Set action name/parameter” will get open.



⑩

⑩ Click [Next] button.

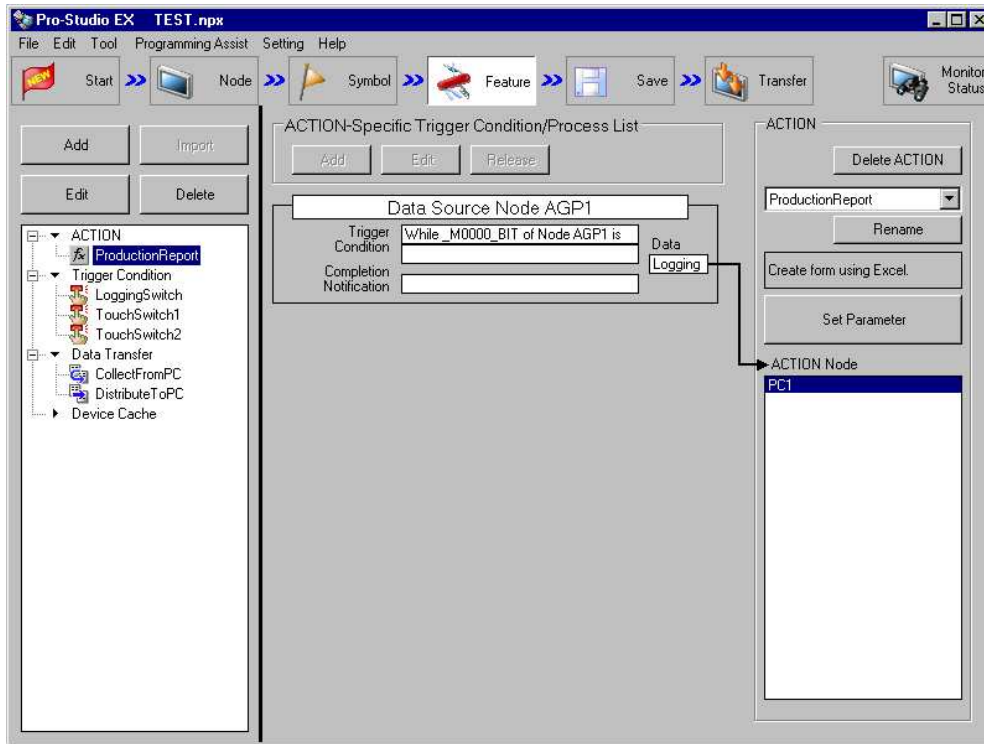
Dialog box of “Set action node/process completion notification” will get opened.



⑪

⑪ Click [Complete] button.

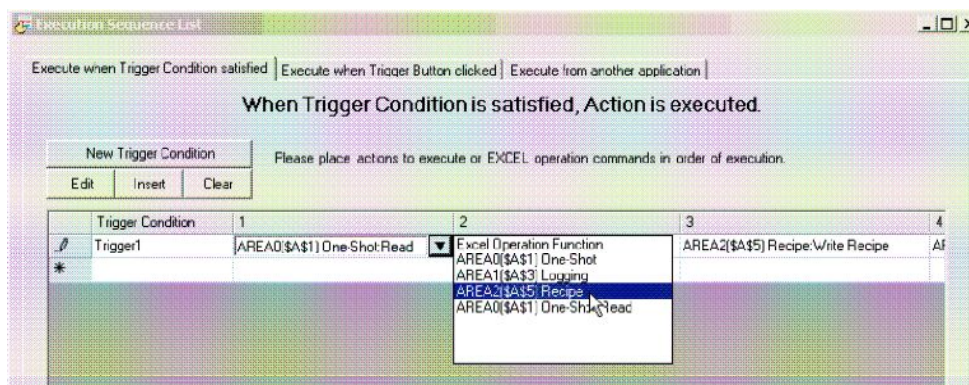
Trigger conditions of action “productions report” and the process list are displayed.



One point

Execution Sequence List

When two or more action areas and the Triggers are added on the template, the order of executing them can be arranged. About details, Please refer to the following.
Reference Manual Chapter5 Creating a Form Using Excel
5.5 Arranging Sequence of ACTION (New Form)

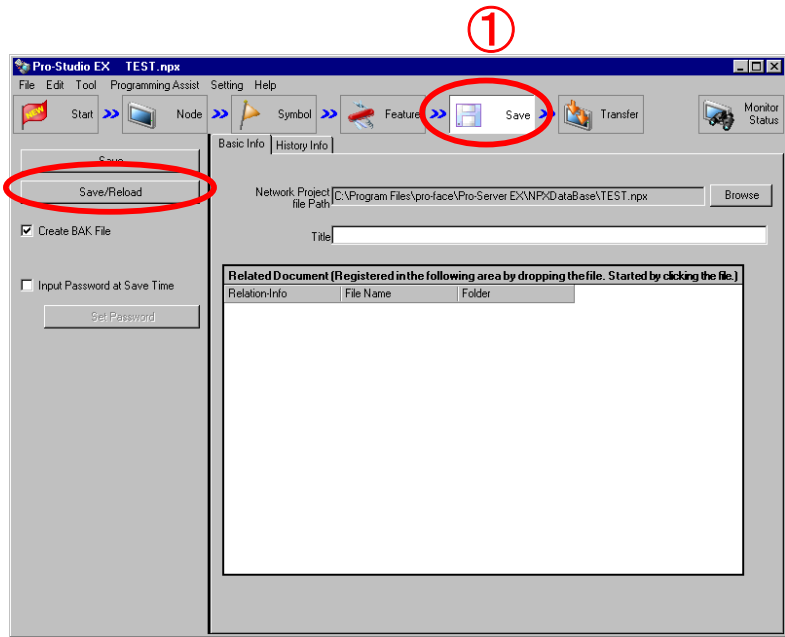


[5] Save/reload NPX and it will transfer to AGP.

① Click [Save] on status bar.

② Click [Save/reload].

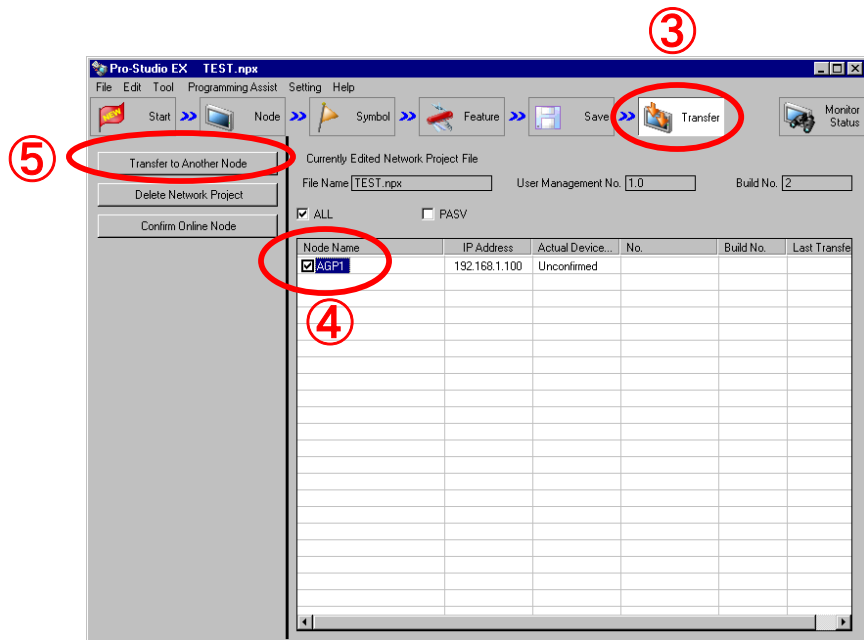
After reloading, the Excel output file shown on the next page will appear.



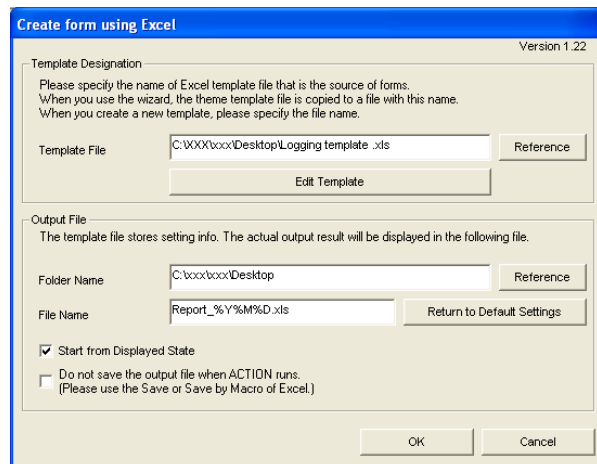
③ Click [Transfer] on status bar.

④ Select the participating node for transfer destination.

⑤ Click [Transfer to another node].



A message as shown in right side is displayed, and if there is no problem/issue with an error check, transfer will terminate normally. Transfer to the personal computer itself is unnecessary.





One point

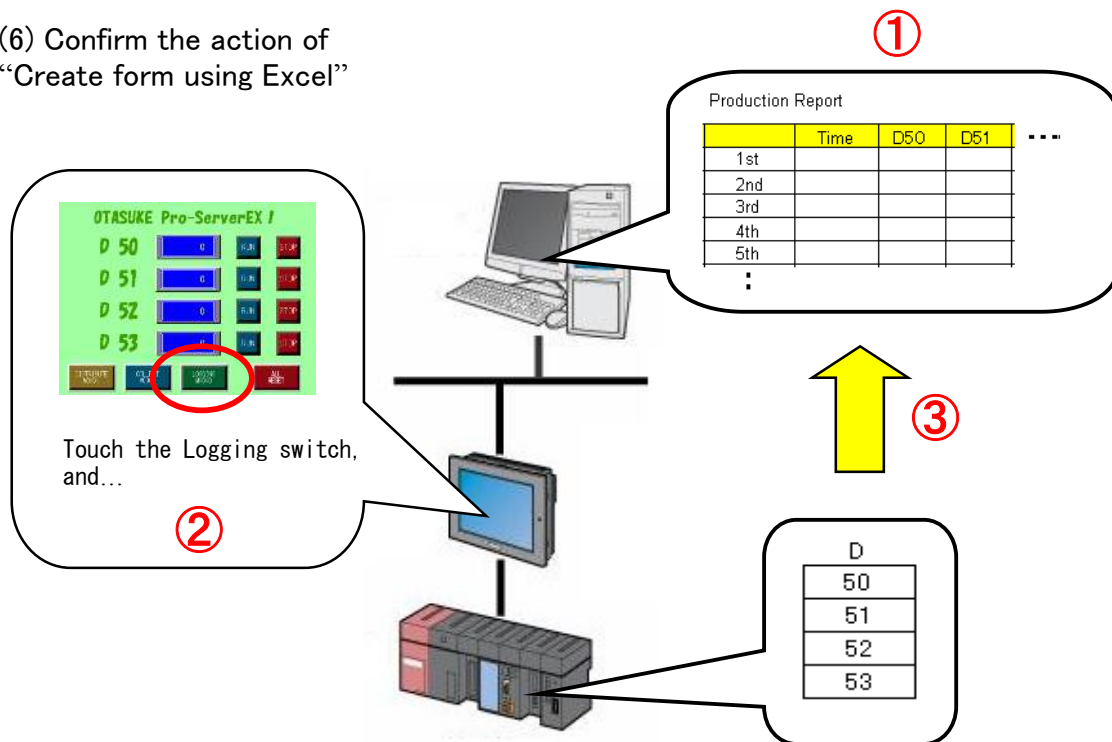
Regarding Action Report

The Excel file which is generated at the time of reload will get open and "Action Report" will be added to the final sheet. Do not delete the "Action Report."

It will become the cause by which defect will occur in action.

Action Report						
Format V1.00						
Template Sheet Information						
No.	Template Sheet Name	Count of Additions	Sheet Name of Final Added			
1	Sheet1		1 Sheet1			
2	Sheet2		1 Sheet2			
3	Sheet3		1 Sheet3			
Action Area Information						
No.	Template Sheet Name	Count of Writes	Name of Last Sheet Written to	Area ID	GROUP Name	Count of Data of Last Sheet

(6) Confirm the action of
“Create form using Excel”



- ① Open SHEET1 of the Excel output file (Report_*****.xls).
- ② If the logging switch on GP screen is pressed, 4-word data from D50 of PLC1 will be written in Excel.
- ③ If it will be written till 10th time, it will be scrolled afterwards.

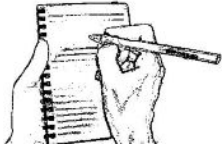


One point

Regarding scroll display

Since “scroll” is selected by action setup of device logging area, if the data of the 10th henceforth enters, the whole area scrolls and only the latest data for 10 time is saved. When all data is left out, “New sheet” is selected. If the data of the 10th henceforth enters, a new sheet will be created and it will keep on record.

When communication does not work, refer to the “communication setup of a personal computer and the check method” of introductory chapter and check the setup.



Memo (The following is blank space. Use it freely.)