

WELCOME TO CAR-BIO



This dealer is an **AUTHORIZED CAR-BIO DEALER**. They have contracted our company to gather all the third-party information available on each of the pre-owned vehicles in their inventory so you have all the information you need to make a completely informed buying decision. **FULL TRANSPARENCY** about the vehicle you are buying is as important as the price.

**Before you purchase any pre-owned vehicle From Any Dealer, make sure the dealership provides you the CAR-BIO.**

**Scroll down to see the Car-Bio on this vehicle.**



# CAR-BIO CONSUMER GUIDE

| Vehicle Equipment | Specifications | Professional Trade Reviews | Owner Reviews |  
| Vehicle History Report and Dealership Information |

## 2012 HYUNDAI ELANTRA

RaySkillmanAutoMall.com



(317) 293-8060

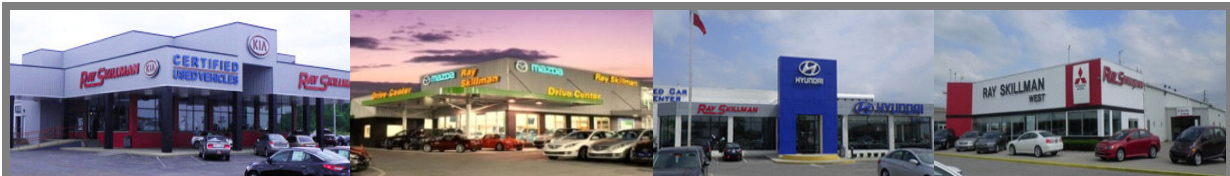
Stock #: K6111A  
ENGINE: 1.8L 4 CYLS  
TRANS: AUTOMATIC 6-SPEED  
COLOR: SILVER  
ODO: 39,831  
VIN: 5NPDH4AE6CH125037

1.8 L LITER INLINE 4 CYLINDER DOHC ENGINE WITH  
4 DOORS  
4-WHEEL ABS BRAKES  
AIR CONDITIONING  
CENTER CONSOLE - FULL WITH COVERED STORAGE  
CLOCK - IN-DASH  
DAYTIME RUNNING LIGHTS  
EXTERNAL TEMPERATURE DISPLAY  
FRONT SEAT TYPE - BUCKET  
FRONT-WHEEL DRIVE  
FUEL ECONOMY EPA HIGHWAY (MPG): 38 AND EPA  
HEAD AIRBAGS - CURTAIN 1ST AND 2ND ROW  
INTERIOR AIR FILTRATION  
INTERMITTENT WINDOW WIPERS  
MULTI-FUNCTION REMOTE - TRUNK/HATCH/DOOR/TAIL  
OVERHEAD CONSOLE - MINI WITH STORAGE  
PASSENGER AIRBAG  
POWER HEATED MIRRORS  
POWER WINDOWS WITH 1 ONE-TOUCH  
PRIVACY/TINTED GLASS  
REAR BENCH SEATS  
REAR DEFOGGER

SCAN HERE TO  
TAKE THE CAR-BIO  
HOME



EVERY PRE-OWNED VEHICLE HAS A STORY, SEE MINE INSIDE!



**RAY SKILLMAN WESTSIDE AUTO MALL**  
[WWW.RAYSKILLMANAUTOMALL.COM](http://WWW.RAYSKILLMANAUTOMALL.COM)



CAR-BIO is a copyrighted product and law prohibits any duplication or imitation. CAR-BIO depends on third party data for accuracy and assumes no liability for incorrect data provided by such parties. This booklet is intended for informational purposes only. Dealer assumes no liability for information provided. Customers should rely on visual inspection on any vehicle prior to purchase. Price subject to change, verify with dealership. For information on CAR-BIO books, call (707) 789-9787 or visit us at [www.car-bio.net](http://www.car-bio.net) © 2004-2014 CAR-BIO Vehicle photos in reviews may not be the actual vehicle for sale.

## Standard Features, Technical Specifications, Awards and Accolades

VIN: 5NPDH4AE6CH125037

### 2012 HYUNDAI ELANTRA 4DR SDN (ALABAMA PLANT)

MODEL YEAR:	2012	BODY TYPE:	SEDAN 4 DR.
DIVISION:	HYUNDAI	MARKET CLASS NAME:	4-DOOR COMPACT PASSENGER CAR
MODEL NAME:	ELANTRA	MANUFACTURER IDENTIFIER:	UNITED STATES HYUNDAI PASSENGER CAR
STYLE AND TRIM:	4DR SDN (ALABAMA PLANT)	DRIVING WHEELS:	FRONT

#### ENTERTAINMENT

AM/FM stereo w/CD/MP3 player -inc: XM satellite radio, (6) speakers, iPod/USB aux input jacks

#### EXTERIOR

Tire mobility kit

Tinted glass

Body-color door handles

Front 2-speed intermittent wipers

#### INTERIOR

Rear center armrest w/cupholders

Front/rear door map pockets

Lower multi-box w/cover

Instrumentation -inc: speedometer, tachometer, digital odometer, digital clock, external temp

Trunk lid inner cover

Front passenger seatback pocket

Rear defroster

Trip computer

#### MECHANICAL

1.8L DOHC MPFI D-CVVT 16-valve I4 engine

MacPherson strut front suspension -inc: coil springs

Torsion axle rear suspension -inc: coil springs

Front stabilizer bar

4-wheel disc brakes

Motor driven pwr steering (MDPS)

Front wheel drive

#### SAFETY

Front/rear roof-mounted side curtain airbags

4-wheel anti-lock brakes (ABS) -inc: electronic brake force distribution (EBD), brake assist

Advanced dual front airbags w/occupant classification system

Front seat-mounted side airbags

Daytime running lights

Emergency trunk release

Child rear door locks

#### Brakes

Drum - Rear (Yes or )

Brake ABS System 4-Wheel

Disc - Rear (Yes or ) Yes

Disc - Front (Yes or ) Yes

#### Cargo Area Dimensions

Trunk Volume 14.8

#### Cooling System

Total Cooling System Capacity 2.2

#### Emissions

Tons/yr of CO2 Emissions @ 15K mi/year - TBD -

#### Engine

Engine Type Gas I4

Displacement 1.8L/110

Fuel System Electronic Fuel Injection

SAE Net Horsepower @ RPM 148 @ 6500

SAE Net Torque @ RPM 131 @ 4700

#### Exterior Dimensions

Min Ground Clearance 5.5

Height, Overall 56.5

Wheelbase 106.3

Length, Overall 178.3

Width, Max w/o mirrors 69.9

Liftover Height

#### Interior Dimensions

Front Head Room 40.0

Front Leg Room 43.6

Front Shoulder Room 55.9

Second Head Room 37.1

Passenger Capacity 5

# STANDARD FEATURES, TECHNICAL SPECIFICATIONS, AWARDS AND ACCOLADES

## VIN: 5NPDH4AE6CH125037

### 2012 HYUNDAI ELANTRA 4DR SDN (ALABAMA PLANT)

MODEL YEAR:	2012	BODY TYPE:	SEDAN 4 DR.
DIVISION:	HYUNDAI	MARKET CLASS NAME:	4-DOOR COMPACT PASSENGER CAR
MODEL NAME:	ELANTRA	MANUFACTURER IDENTIFIER:	UNITED STATES HYUNDAI PASSENGER CAR
STYLE AND TRIM:	4DR SDN (ALABAMA PLANT)	DRIVING WHEELS:	FRONT

Passenger Volume 95.6

Clutch Size

#### Mileage

Clutch Size - TBD -

EPA Fuel Economy Est - City 28

Trans Type 6

Fuel Economy Est-Combined 32

EPA Fuel Economy Est - Hwy 38

#### Vehicle

EPA Classification Midsize cars

#### Steering

Number of Passenger Doors 4

Turning Diameter - Wall to Wall

#### Wheels

Spare Wheel Size

Turning Diameter - Curb to Curb 34.8

Spare Wheel Material

Steering Type Pwr Rack & Pinion

#### Summary

Rear Wheel Material Aluminum

Body Style 4 Door Sedan

Rear Wheel Material Steel

Vehicle Name Hyundai Elantra

Rear Wheel Material Aluminum

#### Suspension

Front Wheel Material Aluminum

Suspension Type - Front MacPherson Strut

Front Wheel Size 16 x 6.0

Suspension Type - Rear Torsion Axle

Front Wheel Material Aluminum

#### Tires

Front Wheel Size 15 x 6.0

Rear Tire Size P195/65R15

Rear Wheel Size 17 x 7.0

Front Tire Size P205/55R16

Rear Wheel Size 16 x 6.0

Front Tire Size P195/65R15

Rear Wheel Size 15 x 6.0

Front Tire Size P205/55R16

Rear Wheel Size 16 x 6.0

Rear Tire Size P205/55R16

Front Wheel Size 17 x 7.0

Rear Tire Size P205/55R16

Front Wheel Size 16 x 6.0

Rear Tire Size P215/45R17

Front Wheel Material Steel

Spare Tire Size

Front Tire Size P215/45R17

#### Trailer

Dead Weight Hitch - Max Trailer Wt.

Wt Distributing Hitch - Max Tongue Wt.

Wt Distributing Hitch - Max Trailer Wt.

#### Transmission

**STANDARD FEATURES, TECHNICAL SPECIFICATIONS, AWARDS AND ACCOLADES**  
**VIN: 5NPDH4AE6CH125037**

**2012 HYUNDAI ELANTRA 4DR SDN (ALABAMA PLANT)**

<b>MODEL YEAR:</b>	<b>2012</b>	<b>BODY TYPE:</b>	<b>SEDAN 4 DR.</b>
<b>DIVISION:</b>	<b>HYUNDAI</b>	<b>MARKET CLASS NAME:</b>	<b>4-DOOR COMPACT PASSENGER CAR</b>
<b>MODEL NAME:</b>	<b>ELANTRA</b>	<b>MANUFACTURER IDENTIFIER:</b>	<b>UNITED STATES HYUNDAI PASSENGER CAR</b>
<b>STYLE AND TRIM:</b>	<b>4DR SDN (ALABAMA PLANT)</b>	<b>DRIVING WHEELS:</b>	<b>FRONT</b>

**Awards and Accolades**

- IIHS Top Safety Pick
- IIHS Top Safety Pick
- ALG Best Residual Value
- Top Safety Pick, Top Safety Pick, Top Safety Pick+
- IIHS Top Safety Pick
- Top Safety Pick
- IIHS Top Safety Pick
- IIHS Top Safety Pick
- JD Power APEAL Study
- ALG Best Residual Value
- IIHS Top Safety Pick
- IIHS Top Safety Pick
- Top Safety Pick+
- IIHS Top Safety Pick
- ALG Best Residual Value
- Ward's 10 Best Engines



# Ray Skillman Westside Auto Mall Hand Picked Used Cars



Stock# \_\_\_\_\_ Model \_\_\_\_\_ Date \_\_\_\_\_ Miles \_\_\_\_\_

Vehicle ID# \_\_\_\_\_ Year \_\_\_\_\_ RO# \_\_\_\_\_ Technician \_\_\_\_\_

## ROAD TEST

- \_\_\_ Passive Safety Systems (SRS, seat belts-all)
- \_\_\_ Mirrors (operation, heat, inside-outside)
- \_\_\_ Indicator Lights (gauges/elec. inst. Panel/turn indicator)
- \_\_\_ Engine Start - idle (cold, warm)
- \_\_\_ Engine Operation (at normal temperature)
- \_\_\_ Shifting (automatic/manual transmission, clutch)
- \_\_\_ Acceleration (0 to 50/passing/cruising)
- \_\_\_ Braking (straight stop/anti-lock operation if applicable)
- \_\_\_ Steering/Turns/Direction (ease noise, alignment)
- \_\_\_ Body/Chassis Integrity (noise/vibration/harshness)
- \_\_\_ Transfer case (F/RWD, 4W, 4WD)
- \_\_\_ Cruise Control (hold, accel., cancel)
- \_\_\_ Windshield wipe/wash  
(operation/blade wipe clean W/O streaks)
- \_\_\_ Speedometer/Odometer (operational)
- \_\_\_ Tilt-Wheel (operation)
- \_\_\_ Sound System (Radio, Tape, CD, Speakers, Antenna)
- \_\_\_ Heater & Air (blower, controls)
- \_\_\_ Horn (operation, function)

## FUNCTIONAL

- \_\_\_ Key(s)/Key Fob (functional)
- \_\_\_ Security Codes (alarms, keyless entry, radio)
- \_\_\_ Luggage Compartment (Spare, air pressure)
- \_\_\_ Convertible top (operational)
- \_\_\_ Interior Lights (map lights, dash lights)
- \_\_\_ Exterior Lights (headlights, brake & high mount)
- \_\_\_ Doors/Door Locks (power lock operation)
- \_\_\_ Seats (operation, neat)
- \_\_\_ Fuel Door/Trunk/Hood/Hatch release (operation)
- \_\_\_ RF Windows (operation, switches full travel)
- \_\_\_ LF Windows (operation, switches full travel)
- \_\_\_ RR Windows (operation, switches full travel)
- \_\_\_ LR Windows (operation, switches full travel)
- \_\_\_ Alarm/Telephone (operation)
- \_\_\_ Power Source/Cigarette lighter (operational)
- \_\_\_ Parking brake (operation)
- \_\_\_ Sun/Moon Roof (operation)
- \_\_\_ Accessories (operation)

## UNDER HOOD

- \_\_\_ Visual (loose/missing components, leaks, labels, decals)
- \_\_\_ Electrical Systems (battery, cables, belts, charge)
- \_\_\_ Engine Cooling System (level, hoses, condition)
- \_\_\_ Power Steering System (level, pump, lines)
- \_\_\_ Brake System (level, master cylinder, lines)
- \_\_\_ Ignition System (wires, condition, routing)
- \_\_\_ Fuel System (lines, leaks, connection)
- \_\_\_ Vacuum System (hoses condition)
- \_\_\_ Air Conditioning System (leaks, lines, routing)
- \_\_\_ Belts (tension, wear)

## UNDER VEHICLE

- \_\_\_ Visual (body, under body, lower body)
- \_\_\_ Frame (no signs of previous repair/damage)
- \_\_\_ Exhaust System (pipes, converter, muffler)
- \_\_\_ Brake Pads, shoes (condition, lining)
- \_\_\_ Calipers, rotors, drums (condition)
- \_\_\_ Hydraulics (lines, hoses)
- \_\_\_ Tires (tread depth, type)
- \_\_\_ Wheels (OEM, matching brand/type)
- \_\_\_ Shock Absorbers/Struts (operation, leaks, etc.)
- \_\_\_ Springs & Sway Bars (mount, bushings, etc.)
- \_\_\_ Control Arms (operation leaks, etc.)
- \_\_\_ Linkage/Steering (tie rods, linkage)
- \_\_\_ Engine/Transmission/Transfer Case (leaks)
- \_\_\_ Drive Line (Drive shaft, axles, universal joints)
- \_\_\_ Differentials/Axles (leaks, CV joints)
- \_\_\_ Gear/Rack & Pinion (leaks & mounting)
- \_\_\_ Parking Brake Cable (condition, fraying)

## EXTERIOR

- \_\_\_ Under Hood (finish, insulation)
- \_\_\_ Front Bumper (fascia, guards, finish)
- \_\_\_ Grille (headlights, emblems)
- \_\_\_ Hood (emblems, finish)
- \_\_\_ LF Fender (finish, trim)
- \_\_\_ LF Door (finish, trim)
- \_\_\_ LR Fender (finish, trim)
- \_\_\_ LR Door (finish, trim)
- \_\_\_ RR Fender (finish, trim)
- \_\_\_ RR Door (finish, trim)
- \_\_\_ RF Fender (finish, trim)
- \_\_\_ RF Door (finish, trim)
- \_\_\_ Roof (finish, trim)
- \_\_\_ Glass (cracks, chips, scratches, pitting)
- \_\_\_ Wheels/Wheel Covers (scratches, pitting)

## INTERIOR

- \_\_\_ Instrument Panel (trim, controls, console)
- \_\_\_ Clock/Timer (check, reset)
- \_\_\_ Driver Seat (cushions, trim)
- \_\_\_ Driver Door (controls, trim)
- \_\_\_ Front Passenger Seat (cushions, trim)
- \_\_\_ Front Passenger Door (controls, trim)
- \_\_\_ Front Carpet & Mats (condition)
- \_\_\_ Rear Seats (cushions, trim)
- \_\_\_ LR Door/Quarter Trim (controls, trim)
- \_\_\_ RR Door/Quarter Trim (controls, trim)
- \_\_\_ Rear Carpet & Mats (condition)
- \_\_\_ Headliner (condition)
- \_\_\_ Visors (function)
- \_\_\_ Luggage Compartment/Cargo Area (trim)
- \_\_\_ Repair Upholstery (tears, holes)

## MAINTENANCE

- \_\_\_ Lube/Oil/Filter
- \_\_\_ Inspect/clean air filter (replace if necessary)
- \_\_\_ Inspect/clean other filters (to manufacturer's schedule)
- \_\_\_ Inspect/top off fluids (cool, brake, transmission, washer, etc.)
- \_\_\_ Lubricate Pivot points (hinges, striker, parking brake)
- \_\_\_ Tire Pressure (check/adjust)
- \_\_\_ Emission/Diagnostic trouble codes  
(meets state & local standards)
- \_\_\_ Fuel Level

## INTERIOR DETAILING

- \_\_\_ Clean interior surfaces and ashtrays
- \_\_\_ Vacuum Carpet and trunk/cargo area
- \_\_\_ Clean Glass Surfaces
- \_\_\_ Clean Vinyl Surfaces
- \_\_\_ Clean Headliner/Seats/Interior cloth trim

## EXTERIOR DETAILING

- \_\_\_ Clean Engine compartment
- \_\_\_ Touch-up/Reconditioning minor surface scratches
- \_\_\_ Remove tar & road oil
- \_\_\_ Exterior wash & polish
- \_\_\_ Tire Shine

OTHER \_\_\_\_\_

COMMENTS:

\_\_\_\_\_  
 \_\_\_\_\_  
 \_\_\_\_\_

## Ask Your Sales Consultant for More Information About Our Hand Picked Program

### WHAT IS COVERED IN THIS LIMITED WARRANTY

**ENGINE:** All lubricated parts, intake manifolds, engine block, cylinder heads, rotary engine housing, ring gear, fuel pump and water pump.

**TRANSMISSION:** The transmission case and all internal parts, torque converter. (Manual clutch assembly parts are not covered.)

**DRIVE AXLE:** The axle housing and internal parts, axle shafts, drive shafts, output shaft, universal joints and constant velocity joints.

**BRAKES:** Master cylinder, power booster, wheel cylinders, calipers, hydraulic lines and fitting. (ABS component parts are not covered.)

**STEERING:** Steering gear housing and all internal parts, power steering pump, valve body, piston and rack.

**ELECTRICAL:** Alternator, generator and starter.

**NOTE:** Seals and gaskets are not covered except when required in connection with replacement of the above parts.

4 Months or 4,000 Miles



**2012 Hyundai Elantra**  
Award-winning compact sedan  
is stylish and affordable.

By New Car Test Drive

## Overview

The Hyundai Elantra is a home run, winning awards for its combination of affordability, sporty styling and performance, and roomy, attractive cabin. This latest design is modern and stylish, with crisp, clean lines. The cabin is roomy and attractive.

We found the Elantra enjoyable to drive. It has a nice balance of smooth ride and responsive handling. And we weren't the only ones who thought that: The Elantra was named the 2012 North American Car of the Year by a jury of 50 independent automotive journalists.

For 2012, changes are minimal because the Elantra was completely redesigned for 2011, with a new body, interior, engine and transmissions.

The 2012 Elantra comes with a new system called ActiveECO, which modifies engine and transmission control to smooth out throttle response and increase real-world fuel economy by up to 7 percent, according to Hyundai. The government numbers are unchanged, however. Also, the steering has been recalibrated on 2012 Elantra models for better on-center feel, and the horn has been upgraded. Otherwise, the 2012 Hyundai Elantra is unchanged from the all-new 2011 model.

A four-door compact sedan, Elantra competes against the Ford Focus, Chevrolet Cruze, Honda Civic, Mazda 3.

All models are powered by a 1.8-liter four-cylinder engine rated at 148 horsepower and 131 pound-feet of torque with a choice of 6-speed manual or 6-speed automatic transmission. Like other compacts, Elantra is front-wheel drive. Its relative light weight, less than 2,900 pounds, helps the Elantra with acceleration performance, braking performance, handling and fuel economy.

Fuel economy is a government-rated 29 mpg City, 40 mpg Highway with either transmission. That's better than the Ford Focus (26/36 mpg), Chevrolet Cruze (26/36 mpg), or Honda Civic (28/36 mpg). Elantra's 29/40 mpg EPA rating compares favorably to the super-efficient Focus SFE (28/40), Cruze Eco (28/42), and Civic HF (29/41) models, each of which is another \$4,000 MSRP. Hyundai says its Elantra PZEV model (that's California-speak for Partial Zero Emissions Vehicle) is as clean as many hybrid electric vehicles, though power from the PZEV is slightly less. Hyundai claims a range of up to 500 miles.

Inside, **Elantra is roomy**, especially by compact standards. Its interior measurements are comparable to those of a small midsize car. There's plenty of headroom and legroom for tall drivers. Once inside, the back seat is tolerable for tall passengers, making this a great car for college students, though the sedan's fastback roof doesn't offer the rear-seat headroom of a hatchback. **All models behave the same**, so choosing a model comes down to deciding which features you want. We think the lower-level models offer the best value.

## Model Lineup

The Hyundai Elantra comes in two trim levels, all powered by a 1.8-liter four-cylinder engine with a choice of 6-speed manual or 6-speed automatic transmission. (Note: The Elantra Touring hatchback is based on the previous-generation version and is not related to the current Elantra sedan.)

Elantra GLS (\$15,195) comes with cloth upholstery, six-way manual driver's seat, 172-watt 6-speaker AM/FM/XM/CD with MP3, iPod, and USB compatibility, 60/40-split fold rear seat, power windows, locks and heated mirrors, tilt steering wheel, keyless entry, anti-theft system, trip computer, 195/65TR15 tires on 15-inch steel wheels, and 6-speed manual gearbox. A Comfort Package (\$1,250) adds manually operated air conditioning, 16-inch wheels, cruise control, telescopic steering wheel.

When ordered with the 6-speed automatic (\$17,445), the GLS comes with manually operated air conditioning, 16-inch wheels and tires, a steering column that tilts and telescopes, cruise control, four cupholders, and a lower-numerical final drive ratio (better fuel economy but slower acceleration performance). The GLS Preferred Package (\$600) upgrades to alloy wheels, steering wheel audio controls, fog lights, Bluetooth hands-free phone system with voice recognition, upgraded interior trim, sliding center armrest, illuminated vanity mirrors with driver extension and illuminated ignition.

Elantra Limited (\$20,445) comes only with the automatic transmission and includes leather upholstery with heated front and rear seats, air conditioning, power moonroof, 215/45HR17 tires with 17-inch alloy wheels, fog lights, leather-wrapped wheel and shift knob, mirror-imbedded turn signals, black chrome grille, solar glass, minor cabin upgrades, and most of the GLS Preferred content. The Limited Technology Package (\$2,100) adds navigation with 7-inch screen, rearview camera, 360-watt premium audio, automatic headlights, proximity key for key-in-pocket operation.

**Safety features that come standard include front, front-side and side-curtain airbags, and electronic stability control with Vehicle Stability Control, antilock brakes, brake assist, and traction control. The optional rearview camera improves safety by helping the driver spot children and pedestrians when backing up.**

Note: Elantra Touring is a hatchback wagon based on the previous-generation Elantra. For impressions of the Touring model, see our review of the 2010 Hyundai Elantra; the wagon hasn't changed since then. (All prices are Manufacturer's Suggested Retail Prices, which do not include destination charge and may change at any time without notice.)

## Walkaround

**The Hyundai Elantra looks striking with crisp, edgy styling. It has presence among four-door compact sedans. Most of the rest of the class looks dated by comparison. The Elantra appears to have the sleekest, highest tail in its class and looks faster because of it. It's currently the most distinctive shape in this segment, rivaled only by the 2012 Ford Focus and Honda Civic.**



Viewed from the front, the hexagonal grille presents a more sinister smile than that of the Mazda 3, more eager to play, a Dustbuster with attitude. The headlight housings wrap into the fenders, the trailing edge back as far as the centerline of the front wheels. This is in-your-face styling as far as commuter compacts go.



In side view, the Elantra echoes the styling of the Hyundai Sonata midsize sedan, with a raked windshield, roofline flowing into the trunk, coupe-like rear side window shape, and a forward-leaning shape. The crease that runs a rising arc from the front wheel, through the door handles and over the rear-wheel openings into the tail lights mirrors the shape of the old Triumph TR7 and TR8 sports cars. Perhaps Triumph's tag line, "The Shape of Things to Come," was indeed accurate.

From the rear, the Elantra is very similar to the larger Sonata, so much so that in the distance or without anything for scale you have to be well-versed on your Hyundais to tell the difference. The tail lights are long, wavy wraparound fixtures echoing the curves that lead in to the rear bumper and promote airflow to help keep the lights clean; on a dirty road surface the license plate should be the first part shrouded in muck.

Elantra Limited models can be distinguished by their larger alloy wheels, fog lights, and mirror-mounted signal repeaters. None of those is reason enough to step up; the tires offer better performance but the aftermarket (or your dealer) can address that, too. The main reason for stepping up is to get the features you want, such as navigation, rearview camera or leather upholstery.

### Interior Features

Hyundai Elantra's interior doesn't resemble that of cost-cutter compacts, instead marrying style with interesting materials. We think the nice interior is part of the value proposition offered by the Elantra. It has neither hint of cheapness nor pretense of luxury.



Heated rear seats come standard on the Elantra Limited model, along with leather upholstery and faux leather door panels all perforated in a wave pattern. Elantra GLS models use cloth upholstery. All the Elantra seats are the same construction, however. The headliner employs a mix of material that includes volcanic rock to an interesting effect more attractive than fuzzy cardboard or plastic. Plastic is used on many surfaces, of course, though the only area we found that looks it is the backs of the front seats. We were pleasantly surprised to find the center AC vents were color-matched to the surrounding trim, not always the case, even on more expensive cars.

Room up front is very good and the seats are set well in from the doors for extra elbow space. Both of our 6-foot, 3-inch test dummies fit fine, even with a sunroof, and neither had the seat all the way back. With the front seats left in place they squeezed under the low door opening into the back, when both found sufficient knee and toe space while one could sit upright without head against the headliner as the other was. There's a lot of passenger volume in the Elantra (EPA labels it midsize, though we consider it a compact) and it has competitive dimensions, but different shapes will find numbers aren't everything.

Front seats proved comfortable for hours with no back complaints about lack of lumbar or inadequate bolstering; longer-legged types may wish for longer seat cushions. It's worth noting the least expensive model does not include a telescoping steering column, which aids comfort and driver awareness. The rear seats are also comfortable, the center floor nearly flat and the center seat higher but well padded.

Analog road and engine speed complement digital fuel and temperature, bathed in blue at night. Most steering wheels have redundant control options and on cars so equipped telephone buttons for hands-on operation. Radio or navigation/audio atop the center stack was easy to work and see in sunlight, though occasionally we'd stumble upon some slightly odd logic like the low-frequency (bass) adjustment on top and the high-frequency (treble) adjustment on the bottom; alphabetical isn't what we're accustomed to. Ventilation controls are in their own section and quickly deciphered.

Cabin storage is fairly good in quantity, variety and location. Each door has a map pocket, electronics plugs aren't right next to the cupholders waiting to fill with coffee or cola, and there's a pocket on the right side of the console with an adjacent 12-volt power point. It's handy for charging things but anything in it takes away the passenger's left knee-rest.

Outward visibility is fairly good. The windshield pillars are thicker (a new set of safety standards is coming) than they were but so far away that rarely presents any issues. A tall windshield and articulated mirror mount ensure a good view on winding or hilly lanes, and the hood can only be seen by those sitting far forward and high. Despite the high trunk and sloping roof we had no problems with rear or rear-quarter vision.

The trunk offers nearly 15 cubic feet of space; only the Chevrolet Cruze and Mazda3 might hold more. It's not a big opening, but sufficient, and there are pulls to drop the 40/60 folding rear seats (not flat) for more capacity. There's only a small area of paint to lift things over so the rear bumper should stay pretty, and a hole in the trunk about the size of a tire has a filler with storage bins in it.

### Driving Impressions

The solidity and driving dynamics make the Hyundai Elantra feel fully competitive with anything in its class.

The 1.8-liter engine makes 148 horsepower at 6500 rpm and 131 pound-feet of torque at 4700 rpm. (That's for the regular ULEV, or Ultra Low Emissions Vehicle. It's 145 hp at 6300 rpm in PZEV states).



Like most in this class, it has to be revved to get the most out of it, and it's fairly happy and unobtrusive doing so. Peak power is at 6500 rpm, though there seemed no point in going beyond 6300 to extract maximum performance. Like many Hyundai models, the gas pedal is calibrated for significant response, feeling like it initially gets a lot of power for just a little pedal, which then makes the second half of pedal travel not so exciting.

EPA fuel economy ratings on the Elantra are 29/40 mpg regardless of trim or transmission. During our test drive, the onboard computer showed a best of 40.3 mpg and a worst of 30.9 mpg in various traffic and terrain.

The 6-speed manual shifts effortlessly and allows maximum performance or most economical driving habits. The 6-speed automatic is just as good, holding gears as needed to maintain speed and eliminate a lot of gear changes trying to save fuel by upshifting only to have to downshift two seconds later because speed fell off.

Electric-assist steering points the car where you want to go with minimal effort, reasonable feedback and U-turns in less than 35 feet. Brakes are all disc on all models and more than capable of slowing down anything the 1.8-liter engine gets going. Directional stability is good, with little of that vague on-center feeling that characterizes some electric-assist steering systems.

Electronic stability control and antilock brakes are standard across the board, and the steering assist is now part of the system: it adds assist when the steering wheel is turned in the correct direction, and lessens assist, requiring more driver effort, when the steering wheel is turned the wrong direction. It won't steer for you in case of a slide, only help you steer the correct direction.

The Elantra's structure is very stiff so the car feels solid, tight and squeak free. Suspension is tuned more for ride comfort than outright speed but the vault-like structure means it can do a commendable job on twisty roads and still glide down the highway. It does exhibit body lean in hard cornering but this is more than acceptable; it remains controlled and makes the driver aware it is working toward its limits.

It just pitter-patters across expansion joints, and it didn't make much difference if we were on the 16-inch steel wheels or lower-profile Limited tires and aluminum wheels. The latter have higher cornering limits, look better, won't be subject to rust long-term but aren't as forgiving on potholed infrastructure.

Hyundai claims a 500-mile range on the highway and we found nothing like wind noise, vibration or other fatigue-inducers that would make us stop for a break mid-way. Human endurance or hunger will more likely be the deciding factor.

## Summary

The Hyundai Elantra is among the best in the compact class. It's stylish outside, very nice inside. We like the quiet ride, the airy cabin. It delivers excellent fuel economy.



G.R. Whale filed this report to NewCarTestDrive.com after his test drive of the Hyundai Elantra near La Jolla, California; with Mitch McCullough reporting from northern New Jersey.

### Model Line Overview

<b>Model lineup:</b>	Hyundai Elantra GLS (\$15,195); Limited (\$20,445)
<b>Engines:</b>	148-hp 1.8-liter I4 (145-hp PZEV version)
<b>Transmissions:</b>	6-speed manual; 6-speed automatic
<b>Safety equipment (Standard):</b>	frontal airbags, front-side airbags, side-curtain airbags; electronic stability control, ABS, EBD
<b>Safety equipment (Optional):</b>	rearview camera
<b>Basic warranty:</b>	5 years/60,000 miles
<b>Assembled in:</b>	Montgomery, Alabama; Ulsan, Korea

### Specifications As Tested

<b>Model tested (MSRP):</b>	Hyundai Elantra GLS (\$15,195)
<b>Standard equipment:</b>	cloth upholstery, six-way manual driver's seat, 172-watt 6-speaker AM/FM/XM/CD/MP3/iPod/USB audio system, 60/40-split fold rear seat, power windows/locks/heated mirrors, tilt steering wheel, console, keyless entry/anti-theft system, trip computer, 195/65TR15 tires on steel wheels
<b>Options as tested:</b>	Comfort Package (\$1,250) includes air conditioning, cruise control, telescopic steering wheel, solar glass, windshield sunshade band, 16-inch steel wheels with 205/55HR16 tires; floor mats (\$95); iPod cable (\$35)
<b>Destination charge:</b>	(\$760)
<b>Gas Guzzler Tax:</b>	N/A
<b>Price as tested (MSRP):</b>	\$17,335
<b>Layout:</b>	front-wheel drive
<b>Engine:</b>	1.8-liter dohc 16-valve I4
<b>Horsepower (hp @ rpm):</b>	148 @ 6500
<b>Torque(lb.-ft. @ rpm):</b>	131 @ 4700
<b>Transmission:</b>	6-speed manual
<b>EPA fuel economy, city/hwy:</b>	29/40 mpg
<b>Wheelbase:</b>	106.3 in.
<b>Length/width/height:</b>	178.3/69.9/56.5 in.
<b>Track, f/r:</b>	61.0/61.5 in.
<b>Turning circle:</b>	34.8 ft.
<b>Seating capacity:</b>	5

<b>Head/hip/leg room, f:</b>	40.0/53.5/43.6 in.
<b>Head/hip/leg room, m:</b>	N/A
<b>Head/hip/leg room, r:</b>	37.1/52.7/33.1 in.
<b>Cargo volume:</b>	14.8 cu. ft.
<b>Payload</b>	N/A
<b>Towing capacity:</b>	N/A
<b>Suspension F:</b>	independent, strut, coil springs, antiroll bar
<b>Suspension R:</b>	torsion beam, coil springs
<b>Ground Clearance:</b>	5.5 in.
<b>Curb weight:</b>	2877 Lbs.
<b>Tires:</b>	205/55HR16
<b>Brakes, f/r:</b>	205/55HR16
<b>Fuel capacity:</b>	205/55HR16 gal.

---

Unless otherwise indicated, specifications refer to test vehicle.

All prices are manufacturer's suggested retail prices (MSRP) effective as of 06/May/2011.

Prices do not include manufacturer's destination and delivery charges. N/A: Information not available or not applicable.

Manufacturer Info Sources: 800-633-5151 - [www.hyundaiusa.com](http://www.hyundaiusa.com)



where smart car buyers start®

"From Edmunds.com"

## 2012 Hyundai Elantra Consumer Review

WOW!

By satexas on 06/15/12 18:56 PM (PDT)

Vehicle

2012 Hyundai Elantra Limited 4dr Sedan (1.8L 4cyl 6A)

Review

My wife and i decided to depart from the luxury car segment and get something more practical. We decided on the hyundai because of the feature content of the limited and the gas mileage. We just werent sure of hyundai reliability. I am happy to say we have had the car 3 months and havent looked back. Sure its no speed demon, but if all you want is a great every day driver and a car that has most of the technology of a luxury car with great gas mileage; then this is the car for you. My wife has managed up to 44mpg hypermiling it on the expressway. Those people that arent getting the high 30 mpg on the highway may just need to have a lighter foot. Great car would totally recommended.

Favorite Features

Bluetooth, backup camera, navi, intelligent key, push button start, blinkers on mirrors, interior space and oh yeah killer gas mileage that looks good and has the feature content of some luxury cars.

Suggested Improvements

spare tire, better trunk liner, move center vents to higher position, HID headlights, also wish they would include some features found on the Avante like parallel parking assistance and front and rear sonar (to compete with ford). I realize this may bump the price a bit.

I am so glad I chose Hyundai Elantra GSL

By deebi27 on 06/02/12 21:02 PM (PDT)

Vehicle

2012 Hyundai Elantra GLS 4dr Sedan (1.8L 4cyl 6A)

Review

I had a Honda CR-V, I loved my car however on April 19th a storm totaled my CRV. I had just paid it off in November. :o( Enter May and I was on a mad research expedition to find a new car. I finally settled on 4 cars. I test drove 3 on Memorial Day and the 4th one, the Hyundai Elantra Tuesday after work. OMG! There was no comparison between the Elantra and the 1st 3. The ride is wonderful! I have great 40+ mpg! I have my Bluetooth hook up, for what I believe will become in the near future...no hand held cell phone use! My husband (6') is quite comfortable in the passenger seat. Phone, radio and cruise controls on the steering wheel. I love my new Hyundai Elantra!!!

Favorite Features

Bluetooth capabilities, great handling, quality sound for the radio and phone, good size trunk and the back seat sits comfortable. Feels bigger than a compact should feel!

Suggested Improvements

I have not found any!

"Copyright Edmunds.com, Inc. All rights reserved. First published on [www.edmunds.com](http://www.edmunds.com) and reprinted with permission. Edmunds and the Edmunds.com car logo are proprietary trademarks of Edmunds.com, Inc."



# Your AutoCheck Vehicle History Report

Report Run Date: March 27, 2015 3:06:31 PM EDT

## 2012 Hyundai Elantra GLS / Limited

**VIN:** 5NPDH4AE6CH125037

**Class:** Small Car - Economy

**Year:** 2012

**Engine:** 1.8L I4 MPI

**Make:** Hyundai

**Country of Assembly:** United States

**Model:** Elantra GLS / Limited

**Vehicle Age:** 3 year(s)

**Style/Body:** Sedan 4D

**Calculated Owners:** 1



**ONE  
OWNER**

Calculated Owners: 1



### Accident Check

Reported accidents: **0**



### Title and Problem Check

Your vehicle checks out:



### Odometer Check

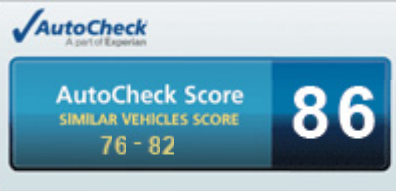
Your vehicle checks out:  
Last Reported Odometer Reading: 20



### Vehicle Use and Event Check

Specific vehicle use(s) or events reported

### This vehicle's AutoCheck Score



The AutoCheck Score is a summary of your vehicle's history. It lets you compare similar vehicles with ease.

### This vehicle qualifies for Buyback Protection



Safeguard your investment with AutoCheck Buyback Protection. It reduces the risk in buying a used vehicle.

Continued on next page

---

## Accident Check

Not all accidents / issues are reported to AutoCheck.

---



**Your Vehicle Checks Out:** There have been no accidents reported to AutoCheck for this 2012 Hyundai Elantra GLS / Limited (5NPDH4AE6CH125037). AutoCheck receives its accident data from government sources and independent agencies, and based on the information available to us, we have found that no accidents have been reported on this vehicle.



**NO ACCIDENT  
FOUND ON RECORD**

---

## Title and Problem Check



**Your Vehicle Checks Out:** AutoCheck's database for this 2012 Hyundai Elantra GLS / Limited (5NPDH4AE6CH125037) shows no negative titles or other problems. When reported to AutoCheck, these events can indicate serious past damage or other significant problems, and disqualifies the vehicle for AutoCheck Buyback Protection. Check the [Vehicle Use and Event Check](#) for reported accidents that can affect vehicle safety and value.

**0 Problem(s)  
Reported:**

**15 Title/Problem areas checked:**

---

	No abandoned title record
	No damaged title or major damage incident record
	No fire damaged title record
	No grey market title record
	No hail damage title record
	No insurance loss title or probable total loss record
	No junk or scrapped title record
	No manufacturer buyback/lemon title record
	No odometer problem title record
	No rebuilt/rebuildable title record
	No salvage title or salvage auction record
	No water damaged title record
	No NHTSA crash test record
	No frame/unibody damage record
	No recycling facility record

---

---



---

## Odometer Check

---



**Your Vehicle Checks Out:** AutoCheck examined the reported odometer readings [reported to AutoCheck](#) for this 2012 Hyundai Elantra GLS / Limited (5NPDH4AE6CH125037) and no indication of an odometer rollback or tampering was found. AutoCheck uses business rules to determine if reported odometer readings are significantly less than previously reported values. Not all reported odometer readings are used. Title and auction events also report odometer tampering or breakage.

**0 Problem(s)  
Reported:**

Mileage	Date Reported
---------	---------------

	20	12/14/2011
--	----	------------

---

---

## Vehicle Use and Event Check

---



**Information Reported:** AutoCheck shows additional vehicle uses or events [reported to AutoCheck](#) for this 2012 Hyundai Elantra GLS / Limited (5NPDH4AE6CH125037). This includes reported vehicle uses such as rental or lease, and events such as whether the vehicle has been reported to have had a loan/lien or a duplicate title issued. Other events show if the vehicle has a reported accident and how many calculated accidents or if it has been reported stolen or repossessed. It is recommended to have pre-owned vehicles inspected by a third party prior to purchase.

**1 Event(s)  
Reported:**

**6 Vehicle uses checked:**

	<a href="#">Fleet, rental and/or lease use record(s)</a>
	No taxi use record
	No police use record
	No government use record
	No livery use record
	No driver education record

**1 Event(s)  
Reported:**

**9 Vehicle events checked:**

	No accident record reported through accident data sources
	No corrected title record
	No duplicate title record

---

	No emission/safety inspection record
	<a href="#">Loan/Lien record(s)</a>
	No fire damage incident record
	No repossessed record
	No theft record
	No storm area registration/title record

Continued on next page

## Detailed Vehicle History

Below are the historical events for this vehicle listed in chronological order. Any discrepancies will be in bold text.

**Report Run Date** March 27, 2015 3:06:31 PM EDT

**Vehicle:** 2012 Hyundai Elantra GLS / Limited (5NPDH4AE6CH125037)



Event date	Location	Odometer reading	Data Source	Details
11/22/2011	IN		Independent Source	VEHICLE MANUFACTURED AND SHIPPED TO DEALER
12/14/2011	IN	20	Motor Vehicle Dept.	TITLE (Title #:11784246000315) (Leased Vehicle) (Lien Reported)
12/29/2011	IN		Motor Vehicle Dept.	REGISTRATION EVENT/RENEWAL (Leased Vehicle)
08/20/2012	IN		Motor Vehicle Dept.	REGISTRATION EVENT/RENEWAL (Leased Vehicle)
08/19/2013	IN		Motor Vehicle Dept.	REGISTRATION EVENT/RENEWAL
08/27/2014	IN		Motor Vehicle Dept.	REGISTRATION EVENT/RENEWAL

## This Vehicle's Glossary

Below are the specific definitions for events that appear in this vehicle's report.

More information is available in the full [AutoCheck glossary](#).

Term	Section Location	Definition
Loan/Lien	Vehicle Use and Event Check	A loan/lien is the legal right to take and hold or sell the vehicle of a debtor as security or payment for a debt. Normally, a vehicle will have a lien due to a loan or unpaid repair bill against the vehicle. Check with the seller to ensure that the lien has been satisfied.
Fleet, Rental and/or Lease Use	Vehicle Use and Event Check	The vehicle has been reported as used as a fleet, rental, and/or lease vehicle.

**AutoCheck Terms and Conditions**

This report, and any reliance upon it, is subject to [AutoCheck Terms and Conditions](#) . If you obtained the report from a dealer, the dealer has been provided with these Terms & Conditions and can share them with you. These AutoCheck Terms and Conditions are also available at any time at [www.autocheck.com/terms](http://www.autocheck.com/terms) or by writing to Experian: Experian Automotive C/O AutoCheck Customer Service 955 American Lane Schaumburg IL 60173

**Buyback Protection Terms and Conditions**

This vehicle (5NPDH4AE6CH125037) qualifies for [AutoCheck Buyback Protection](#) . If you obtained the report from a dealer, the dealer has been provided with the terms and can share them with you. These Buyback Protection Terms and Conditions are also available to you at any time at [www.autocheck.com/bbpterm](http://www.autocheck.com/bbpterm)s or by writing to Experian: Experian Automotive C/O AutoCheckCustomer Service 955 American Lane Schaumburg IL 60173

**About AutoCheck**

AutoCheck vehicle history reports by Experian Automotive is the leading vehicle history reporting service. With expert data handling, the Experian Automotive database houses over 4 billion records on a half a billion vehicles. Every AutoCheck vehicle history report will give you confidence when buying or selling your next used vehicle, with superior customer service every step of the way.

**Patent Notice**

Certain aspects of this vehicle history report may be covered by U.S. Patent 8,005,759.



## Welcome to Ray Skillman Auto Mall

Ray Skillman Auto Mall in Indianapolis, IN also serving Central, IN and Greenwood, IN is proud to be an automotive leader in our community. Since opening our doors, Ray Skillman Auto Mall has maintained our solid commitment to our customers, offering a wide selection of cars and trucks and ease of purchase.

Whether you are in the market to purchase a new or pre-owned vehicle, if you need financing options, we'll help you find a car loan that works for you! Even if you have bad credit, or are a first time car buyer, you can trust that Ray Skillman Auto Mall will professionally fit you into the automobile of your choice.

Ray Skillman Auto Mall has a professionally managed Service and Parts Departments open extended hours to accommodate our customers' busy schedules; and, as always, Ray Skillman Auto Mall offers competitive pricing for your automotive maintenance needs. Please feel free to contact us at (317) 293-8060 if you have any questions or comments.

Ray Skillman Auto Mall offers a full line of service areas including:

- New Automobile Sales
- Pre-owned automobile Sales
- Auto Loans and Financing
- Certified service department
- Full selection of Hyundai, Kia, Mazda, Mitsubishi parts and accessories

**Scan Here to Meet Our Staff**





Among all the car dealers that you can find, how do you distinguish the exceptional from the average? There are several characteristics that you need to look for when choosing among them - characteristics that Ray Skillman West Auto Mall constantly strives to possess:

- **Longevity/Reputation** - Ray Skillman West Auto Mall is one of the most established car dealers in Indianapolis. Our years of experience and expertise in the industry along with our services have allowed us to establish a large base of loyal customers.
- **Options** - We offer different kinds and brands of vehicles to help you choose the car you want. Whether you're looking for a brand new car or a used vehicle, you can easily find one through our inventory. We specialize in different models of Hyundai, Kia, Mitsubishi and Mazda.
- **Customer Service** - Our car dealers in Indianapolis can provide you the assistance you need in buying or servicing your car. These people are highly trained and can provide you the information you need upfront. No pushy sales talk; just assistance when you need it, where you need it.
- **Financing** - Unlike other Indianapolis car dealers, Ray Skillman West Auto Mall offers different finance programs to help you purchase the vehicle you want. We provide financing assistance even to those with bad credit problems. We also offer low prices, rebates and incentives for your chosen new and used vehicle. Quick approvals and flexible terms are also guaranteed in our different finance programs.
- **Parts and Service Center** - Our car dealers in Indianapolis aren't only there to help you buy a car but also to provide you assistance when it comes to servicing your vehicle. We have a Service Department made up of well-trained staff to assist you in vehicle repairs. Our parts department offers a huge stock from top brands. We can also provide you transportation arrangements as you wait for your vehicle to be serviced at our shop.
- **Flexible Operation Hours** - Our Indianapolis car dealers are available from Mondays to Saturdays. Sales hours are from 9am-9pm (weekdays) and 9am to 7pm (Saturdays). Service and parts hours are from 7am-6pm (weekdays) and 8:30am-3:30pm (Saturdays).

Scan Here to Watch Video



# Ray Skillman Community Involvement



## HOPE ON WHEELS AT RAY SKILLMAN



Hyundai Hope on Wheels donates \$30,000 to Riley Indianapolis Hospital for Children To fight childhood cancer. Bill Skillman, on behalf on Hyundai Motor America and Indianapolis Hyundai dealers, Presented the check to Riley Oncologist Dr. Chie-Schin Shih.



Dr. Shih, a 2010 Hyundai Scholar, will put the funds to use in his research to help prevent the negative side effects associated with chemotherapy in treating childhood cancer.



Riley patients get involved by dipping their hands in finger paint and placing their palm prints on a white Hyundai Santa Fe. The car, which is covered in children's handprints from all over the country, is the symbol of Hyundai Hope on Wheels.



The 2010 Hope on Wheels Tour is traveling nationwide to donate more than \$2.1 million to childhood cancer research facilities. The entire Ray Skillman family of dealerships is honored and proud to be a small part of this tremendously important effort.

For more information, please visit [www.hyundaihopeonwheels.org](http://www.hyundaihopeonwheels.org) or [www.rileyhospital.org](http://www.rileyhospital.org)



# "2012 Indiana Dealer of the Year!"

AND 2013

-DealerRater.com



December 01, 2013 jwpw Avon, IN

Returned to this dealership for easy going car buying experience. It reminded us of buying a Saturn in 1992, very good people to work with.

**koliphant75/30/2013**

Zack was great to work with. He was very knowledgeable and friendly. He did a great job of showing us all the features of the vehicle. He made the whole process go smoothly and got us a fantastic deal. I would definitely recommend him and the dealership.

**Brettballou 5/30/2013**

I must say that my experience with the Ray Skillman Westside Auto Mall was the best experience I have ever had at a car dealership. Everyone there is exceptional! Eric Alcorn my salesman was fantastic and I will recommend him highly to everyone I know looking for a new vehicle.

**Brett O. Ballou**

**mrh29705/5/2013**

thanks to Mike Hendershot and Terry Hannel for helping me pick the perfect car for me and my budget. You have made this girl extremely happy! I have never had such a wonderful experience, by the time we left, it felt like we knew everyone there. And thanks for the cookies :)

July 22, 2013 gboxjack95 Indianapolis, IN

My visit was very nice! all the staff was very helpful. Audra was super to work with and does not take the answer no! she found the car I wanted and got me into it very fast. I look forward to my next purchase! thanks again Audra you rock! -



September 28, 2013 Scott Sego Indianapolis, IN

Been looking at new cars for quite some time. I looked at several cars at several places.

When I called Ray Skillman looking for a new Azera, one of the sales managers Troy answered the phone and greeted me very professionally. I told him what I was looking for and that I wanted to lease. He found the car, gave me a great price and told me to come on by and pick it up. It was that simple! When I arrived he introduced me to Audra and she took it from there. Because I was so pressed for time, I signed a form and drove the car home that day. When I arrived the next morning to do the paperwork, I had changed my mind on the color of the car and they very politely and very quickly changed me out to a different color....No questions asked. Audra took the time to show me the car, answer questions, set up my Essentials package, scheduled my first maintenance appointment and even listened to a couple of my goofy jokes! All-in-all, this was the easiest car dealer experience I've EVER had! I'll definitely recommend Ray Skillman West Auto Mall to my friends. Audra is a FANTASTIC sales lady!!

Arkissner 4/11/2013

I walked into Westside Auto Mall in a bundle of nerves. I was greeted at the door by Austin Burns who immediately calmed my nerves. I had not had a car payment in 10 years and knew that my credit was less than perfect. I was driving a Mitsubishi SUV (named Ruby) that had 245,000 miles on it and was 13 years old. I knew I had to do something to have a dependable vehicle for my job but also knew I couldn't spend a ton of money so I had to absolutely LOVE whatever I purchased. Austin stayed with me for several hours while I drove one car and then the next until finally, I decided on the Mazda 6. It was a great choice and still is. I'm saving money on gas and feel much safer in my new-to-me car! The finance department was very pleasant and knowing that my credit score wasn't the best, didn't make me feel inferior about it. Eric Murphy is a very kind soul and I'm thankful that the day that I decided to visit Ray Skillman West Side Auto, these two gentlemen were working! I will definitely recommend them to my friends and family in the market for a new or used vehicle!

**Scan Here to See More Reviews on Dealer Rater**

**"2012 Indiana Dealer of the Year!"**

**AND 2013**

**-DealerRater.com**



# Ray Skillman Auto Mall Service Department Indianapolis, IN

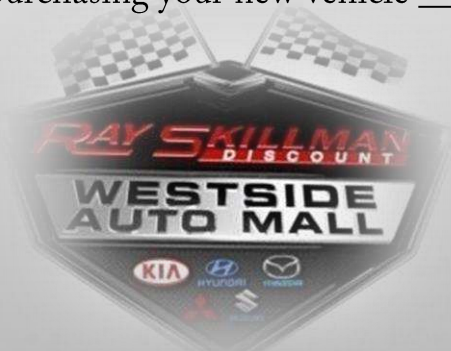
Listed below are some of the many types of services we offer to our customers. Sorry, we cannot provide pricing due to the hundreds of different makes and models for which we offer service. If you would like an estimate, please call us at (317) 293-8060 . We would be pleased to provide you with an estimate over the phone.

- Oil Change
- Tire Mounting, Rotation and Balance
- Transmission Service
- 30K, 60K, 90K Service
- Engine Diagnostic (Check engine light, fluid light, service light, etc.)
- Brake System (Pads, rotor, lines, etc.)
- Heating/Cooling Systems
- Electrical Systems
- Ignition System
- Warranty Repairs
- Head Gasket/Valves
- Exhaust Systems
- Electronic Motors (Windows, fan, etc..)
- Engine Replacement or Rebuild
- Fuel Systems (Filters, hoses, pumps, etc.)
- Steering Systems
- Belts (Timing, alternator, etc.)
- Emission Control System
- Suspension System (Axle, mounts struts, etc.)
- Clutch Repair/replacement

## \$9.95 First Oil Change Coupon

Is Presented to \_\_\_\_\_ In Appreciation \_\_\_\_\_

For purchasing your new vehicle \_\_\_\_\_



Schedule Appointment Date: \_\_\_\_\_

Expiration Date: \_\_\_\_\_

VIN: \_\_\_\_\_

Authorization: \_\_\_\_\_

Disclaimer: Excludes Diesel Vehicles and Synthetic Oil

[Return to Pre-Owned Inventory](#)

[Finance Application](#)

[Contact Us](#)

[Value Your Trade](#)

[Testimonials](#)

[Payment Calculator](#)

Scan or Click  
Here for  
Directions

