

WELCOME TO CAR-BIO



This dealer is an **AUTHORIZED CAR-BIO DEALER**. They have contracted our company to gather all the third-party information available on each of the pre-owned vehicles in their inventory so you have all the information you need to make a completely informed buying decision. **FULL TRANSPARENCY** about the vehicle you are buying is as important as the price.

Before you purchase any pre-owned vehicle, make sure the dealership provides you the CAR-BIO.

Scroll down to see the Car-Bio on this vehicle.



CAR-BIO CONSUMER GUIDE

| VEHICLE EQUIPMENT | SPECIFICATIONS | PROFESSIONAL TRADE REVIEWS | OWNER REVIEWS |
| VEHICLE HISTORY REPORT AND DEALERSHIP INFORMATION |

2013 CHEVROLET SPARK

RaySkillmanAutoMall.com



(317) 293-8060

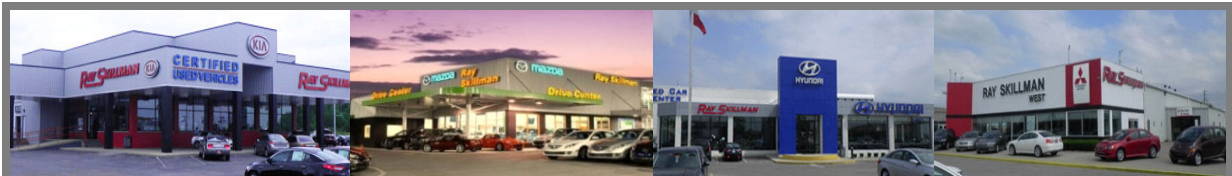
STOCK #: HJ7555
ENGINE: 1.2L 4 CYLS
TRANS: MANUAL 5-SPEED
COLOR: SILVER ICE METALLIC
ODO: 19,001
VIN: KL8CA6S92DC603716

FUEL ECONOMY EPA HIGHWAY (MPG): 38 AND EPA
TRACTION CONTROL - ABS AND DRIVELINE
REAR DEFOGGER
84 HP HORSEPOWER
FRONT SEAT TYPE - BUCKET
1.2 LITER INLINE 4 CYLINDER DOHC ENGINE
POWER STEERING
CLOCK - IN-RADIO DISPLAY
REAR WIPER
DAYTIME RUNNING LIGHTS
CENTER CONSOLE - FULL WITH STORAGE
AIR CONDITIONING
FRONT-WHEEL DRIVE
TRANSMISSION HILL HOLDER
4-WHEEL ABS BRAKES
HEAD AIRBAGS - CURTAIN 1ST AND 2ND ROW
EXTERNAL TEMPERATURE DISPLAY
MANUAL TRANSMISSION
INTERIOR AIR FILTRATION
POWER WINDOWS
TACHOMETER
STABILITY CONTROL

SCAN HERE TO
TAKE THE CAR-BIO
HOME



EVERY PRE-OWNED VEHICLE HAS A STORY, SEE MINE INSIDE!



RAY SKILLMAN WESTSIDE AUTO MALL
WWW.RAYSKILLMANAUTOMALL.COM



CAR-BIO is a copyrighted product and law prohibits any duplication or imitation. CAR-BIO depends on third party data for accuracy and assumes no liability for incorrect data provided by such parties. This booklet is intended for informational purposes only. Dealer assumes no liability for information provided. Customers should rely on visual inspection on any vehicle prior to purchase. Price subject to change, verify with dealership. For information on CAR-BIO books, call (707) 789-9787 or visit us at www.car-bio.net © 2004-2014 CAR-BIO Vehicle photos in reviews may not be the actual vehicle for sale.

Standard Features, Technical Specifications, Awards and Accolades

VIN: KL8CA6S92DC603716

2013 CHEVROLET SPARK 5DR HB MAN LS

MODEL YEAR:	2013	BODY TYPE:	HATCHBACK 4 DR.
DIVISION:	CHEVROLET	MARKET CLASS NAME:	4-DOOR SUB-COMPACT PASSENGER CAR
MODEL NAME:	SPARK	MANUFACTURER IDENTIFIER:	SOUTH KOREA TO BE DETERMINED PASSE
STYLE AND TRIM:	5DR HB MAN LS	DRIVING WHEELS:	FRONT

ENTERTAINMENT

Audio system feature, 4-speaker system

Antenna, roof-mounted

Audio system feature, auxiliary input jack located in front center stack storage bin

EXTERIOR

Wiper, rear, continuous, with washer

Door handles, body-color

Tire inflation kit

Tires, P185/55R15 all-season blackwall

License plate bracket, front

Wipers, front intermittent, variable

Glass, solar absorbing

Mirrors, outside manual, body-color, manual-folding

Grille, chrome-surround

Wheels, 15" (38.1 cm) 5-split spoke Silver-painted aluminum

Headlamps, halogen with Daytime Running Lamps

Spoiler, rear with integrated LED CHMSL

INTERIOR

Driver foot rest, left side

Shift indicator, manual transmission

Instrumentation, analog with speedometer, tachometer and fuel gauge

Steering wheel, 3-spoke, Silver accents

Fuel filler door release, remote

Floor covering, carpet with driver heel pad

Console, rear, center with storage tray

Seat, rear, 60/40-split, flip-and-fold with adjustable outboard headrests

Seat adjuster, passenger 2-way manual with manual recline

Cabin air filter

Oil life monitoring system

Seat adjuster, driver 4-way manual with manual recline

Lighting, dimming instrument panel cluster

Safety belts, 3-point, all positions, front height adjustable

Safety belt pretensioners, driver and front passenger, dual

Cargo security shelf, rear

Shopping bag hooks located on base of driver and front passenger head restraints

Lighting, rear cargo compartment lamp

Glovebox

Lighting, interior overhead courtesy lamp with OnStar controls

Assist handles, driver, front passenger and rear outboard

Mirror, inside rearview manual day/night

Armrest, driver, folding

Bottle holder with door storage pocket on driver and front passenger doors

Map pocket, front passenger seatback

Storage, lower center IP bin

Cup holders, 2 front and 2 rear

Center stack trim, LS

Storage, driver IP coin tray

Storage, front passenger IP tray

Driver Information Center with trip computer

Engine immobilizer, theft-deterrent system

Defogger, rear-window

Steering column, Tilt-Wheel

Windows, power, front and rear

Visors, driver and front passenger with driver covered vanity mirror

Power outlet, auxiliary located in front center stack storage bin

Liftgate release, electronic, lock/unlock button

Air conditioning, single-zone manual

MECHANICAL

Brakes, 4-wheel antilock, front disc/rear drum

Suspension, rear, compound crank

Suspension, front, McPherson struts

Alternator, 100 amps

Battery rundown protection

Battery, 375 cold-cranking amps

Engine, ECOTEC 1.2L DOHC 4-cylinder MFI (84 hp [62.6 kW] @ 6400 rpm, 83 lb-ft of torque [112.1 N-m] @ 4200 rpm)

Axle, 4.21 final drive ratio

Steering, power, electric

Front wheel drive

SAFETY

LATCH system (Lower Anchors and Top tethers for CHildren), for child

STANDARD FEATURES, TECHNICAL SPECIFICATIONS, AWARDS AND ACCOLADES

VIN: KL8CA6S92DC603716

2013 CHEVROLET SPARK 5DR HB MAN LS

MODEL YEAR:	2013	BODY TYPE:	HATCHBACK 4 DR.
DIVISION:	CHEVROLET	MARKET CLASS NAME:	4-DOOR SUB-COMPACT PASSENGER CAR
MODEL NAME:	SPARK	MANUFACTURER IDENTIFIER:	SOUTH KOREA TO BE DETERMINED PASSE
STYLE AND TRIM:	5DR HB MAN LS	DRIVING WHEELS:	FRONT

safety seats

Air bags, head curtain, side-front and rear outboard seating positions (Always use safety belts and child restraints. Children are safer when properly secured in a rear seat in the appropriate child restraint. See the Owners Manual for more information.)

Air bags, thorax side-impact seat-mounted, side-front and rear outboard seating positions (Always use safety belts and child restraints. Children are safer when properly secured in a rear seat in the appropriate child restraint. See the Owners Manual for

Air bags, dual-stage, frontal, driver and right-front passenger includes Passenger Sensing System (Always use safety belts and child restraints. Children are safer when properly secured in a rear seat in the appropriate child restraint. See the Owners Man

Hill Start Assist

Air bags, 10 total (Always use safety belts and child restraints. Children are safer when properly secured in a rear seat in the appropriate child restraint. See the Owners Manual for more information.)

Tire Pressure Monitoring System

Air bags, knee, driver and front passenger (Always use safety belts and child restraints. Children are safer when properly secured in a rear seat in the appropriate child restraint. See the Owners Manual for more information.)

Brakes

Disc - Front (Yes or) Yes

Brake ABS System 4-Wheel

Disc - Rear (Yes or)

Drum - Rear (Yes or) Yes

Cargo Area Dimensions

Cargo Volume with Rear Seat Down 31.2

Cargo Volume with Rear Seat Up 11.4

Cooling System

Total Cooling System Capacity - TBD -

Emissions

Tons/yr of CO2 Emissions @ 15K mi/year 5.4

EPA Greenhouse Gas Score - TBD -

Engine

Engine Type Gas I4

Fuel System Electronic Fuel Injection

SAE Net Horsepower @ RPM 84 @ 6400

SAE Net Torque @ RPM 83 @ 4200

Displacement 1.2L/73

Exterior Dimensions

Width, Max w/o mirrors 62.90

Min Ground Clearance - TBD -

Height, Overall 61.00

Length, Overall 144.70

Wheelbase 93.50

Liftover Height - TBD -

Interior Dimensions

Passenger Capacity 4

Passenger Volume 86.3

Front Shoulder Room 50.70

STANDARD FEATURES, TECHNICAL SPECIFICATIONS, AWARDS AND ACCOLADES

VIN: KL8CA6S92DC603716

2013 CHEVROLET SPARK 5DR HB MAN LS

MODEL YEAR:	2013	BODY TYPE:	HATCHBACK 4 DR.
DIVISION:	CHEVROLET	MARKET CLASS NAME:	4-DOOR SUB-COMPACT PASSENGER CAR
MODEL NAME:	SPARK	MANUFACTURER IDENTIFIER:	SOUTH KOREA TO BE DETERMINED PASSE
STYLE AND TRIM:	5DR HB MAN LS	DRIVING WHEELS:	FRONT

Front Leg Room 42.00

Front Head Room 39.40

Second Head Room 37.30

Mileage

Fuel Economy Est-Combined 34

EPA Fuel Economy Est - City 32

EPA Fuel Economy Est - Hwy 38

Steering

Turning Diameter - Curb to Curb 32.5

Steering Type Electric Pwr Steering

Turning Diameter - Wall to Wall

Summary

Vehicle Name Chevrolet Spark

Body Style 4 Door Hatch Back

Suspension

Suspension Type - Front MacPherson Strut

Suspension Type - Rear Compound Crank

Tires

Spare Tire Size

Rear Tire Size P185/55R15

Front Tire Size P185/55R15

Trailerinq

Wt Distributing Hitch - Max Tongue Wt.

Wt Distributing Hitch - Max Trailer Wt.

Dead Weight Hitch - Max Trailer Wt.

Transmission

Trans Type 5

Clutch Size - TBD -

Vehicle

Number of Passenger Doors 4

EPA Classification Mini-Compact Car

Wheels

Front Wheel Size 15 x - TBD -

Rear Wheel Size 15 x - TBD -

Spare Wheel Size - TBD -

Front Wheel Material Aluminum

Rear Wheel Material Aluminum

Spare Wheel Material



Ray Skillman Westside Auto Mall Hand Picked Used Cars



Stock# _____ Model _____ Date _____ Miles _____

Vehicle ID# _____ Year _____ RO# _____ Technician _____

ROAD TEST

- ___ Passive Safety Systems (SRS, seat belts-all)
- ___ Mirrors (operation, heat, inside-outside)
- ___ Indicator Lights (gauges/elec. inst. Panel/turn indicator)
- ___ Engine Start - idle (cold, warm)
- ___ Engine Operation (at normal temperature)
- ___ Shifting (automatic/manual transmission, clutch)
- ___ Acceleration (0 to 50/passing/cruising)
- ___ Braking (straight stop/anti-lock operation if applicable)
- ___ Steering/Turns/Direction (ease noise, alignment)
- ___ Body/Chassis Integrity (noise/vibration/harshness)
- ___ Transfer case (F/RWD, 4W, 4WD)
- ___ Cruise Control (hold, accel., cancel)
- ___ Windshield wipe/wash
(operation/blade wipe clean W/O streaks)
- ___ Speedometer/Odometer (operational)
- ___ Tilt-Wheel (operation)
- ___ Sound System (Radio, Tape, CD, Speakers, Antenna)
- ___ Heater & Air (blower, controls)
- ___ Horn (operation, function)

FUNCTIONAL

- ___ Key(s)/Key Fob (functional)
- ___ Security Codes (alarms, keyless entry, radio)
- ___ Luggage Compartment (Spare, air pressure)
- ___ Convertible top (operational)
- ___ Interior Lights (map lights, dash lights)
- ___ Exterior Lights (headlights, brake & high mount)
- ___ Doors/Door Locks (power lock operation)
- ___ Seats (operation, neat)
- ___ Fuel Door/Trunk/Hood/Hatch release (operation)
- ___ RF Windows (operation, switches full travel)
- ___ LF Windows (operation, switches full travel)
- ___ RR Windows (operation, switches full travel)
- ___ LR Windows (operation, switches full travel)
- ___ Alarm/Telephone (operation)
- ___ Power Source/Cigarette lighter (operational)
- ___ Parking brake (operation)
- ___ Sun/Moon Roof (operation)
- ___ Accessories (operation)

UNDER HOOD

- ___ Visual (loose/missing components, leaks, labels, decals)
- ___ Electrical Systems (battery, cables, belts, charge)
- ___ Engine Cooling System (level, hoses, condition)
- ___ Power Steering System (level, pump, lines)
- ___ Brake System (level, master cylinder, lines)
- ___ Ignition System (wires, condition, routing)
- ___ Fuel System (lines, leaks, connection)
- ___ Vacuum System (hoses condition)
- ___ Air Conditioning System (leaks, lines, routing)
- ___ Belts (tension, wear)

UNDER VEHICLE

- ___ Visual (body, under body, lower body)
- ___ Frame (no signs of previous repair/damage)
- ___ Exhaust System (pipes, converter, muffler)
- ___ Brake Pads, shoes (condition, lining)
- ___ Calipers, rotors, drums (condition)
- ___ Hydraulics (lines, hoses)
- ___ Tires (tread depth, type)
- ___ Wheels (OEM, matching brand/type)
- ___ Shock Absorbers/Struts (operation, leaks, etc.)
- ___ Springs & Sway Bars (mount, bushings, etc.)
- ___ Control Arms (operation leaks, etc.)
- ___ Linkage/Steering (tie rods, linkage)
- ___ Engine/Transmission/Transfer Case (leaks)
- ___ Drive Line (Drive shaft, axles, universal joints)
- ___ Differentials/Axles (leaks, CV joints)
- ___ Gear/Rack & Pinion (leaks & mounting)
- ___ Parking Brake Cable (condition, fraying)

EXTERIOR

- ___ Under Hood (finish, insulation)
- ___ Front Bumper (fascia, guards, finish)
- ___ Grille (headlights, emblems)
- ___ Hood (emblems, finish)
- ___ LF Fender (finish, trim)
- ___ LF Door (finish, trim)
- ___ LR Fender (finish, trim)
- ___ LR Door (finish, trim)
- ___ RR Fender (finish, trim)
- ___ RR Door (finish, trim)
- ___ RF Fender (finish, trim)
- ___ RF Door (finish, trim)
- ___ Roof (finish, trim)
- ___ Glass (cracks, chips, scratches, pitting)
- ___ Wheels/Wheel Covers (scratches, pitting)

INTERIOR

- ___ Instrument Panel (trim, controls, console)
- ___ Clock/Timer (check, reset)
- ___ Driver Seat (cushions, trim)
- ___ Driver Door (controls, trim)
- ___ Front Passenger Seat (cushions, trim)
- ___ Front Passenger Door (controls, trim)
- ___ Front Carpet & Mats (condition)
- ___ Rear Seats (cushions, trim)
- ___ LR Door/Quarter Trim (controls, trim)
- ___ RR Door/Quarter Trim (controls, trim)
- ___ Rear Carpet & Mats (condition)
- ___ Headliner (condition)
- ___ Visors (function)
- ___ Luggage Compartment/Cargo Area (trim)
- ___ Repair Upholstery (tears, holes)

MAINTENANCE

- ___ Lube/Oil/Filter
- ___ Inspect/clean air filter (replace if necessary)
- ___ Inspect/clean other filters (to manufacturer's schedule)
- ___ Inspect/top off fluids (cool, brake, transmission, washer, etc.)
- ___ Lubricate Pivot points (hinges, striker, parking brake)
- ___ Tire Pressure (check/adjust)
- ___ Emission/Diagnostic trouble codes
(meets state & local standards)
- ___ Fuel Level

INTERIOR DETAILING

- ___ Clean interior surfaces and ashtrays
- ___ Vacuum Carpet and trunk/cargo area
- ___ Clean Glass Surfaces
- ___ Clean Vinyl Surfaces
- ___ Clean Headliner/Seats/Interior cloth trim

EXTERIOR DETAILING

- ___ Clean Engine compartment
- ___ Touch-up/Reconditioning minor surface scratches
- ___ Remove tar & road oil
- ___ Exterior wash & polish
- ___ Tire Shine

OTHER _____

COMMENTS:

Ask Your Sales Consultant for More Information About Our Hand Picked Program

WHAT IS COVERED IN THIS LIMITED WARRANTY

ENGINE: All lubricated parts, intake manifolds, engine block, cylinder heads, rotary engine housing, ring gear, fuel pump and water pump.

TRANSMISSION: The transmission case and all internal parts, torque converter. (Manual clutch assembly parts are not covered.)

DRIVE AXLE: The axle housing and internal parts, axle shafts, drive shafts, output shaft, universal joints and constant velocity joints.

BRAKES: Master cylinder, power booster, wheel cylinders, calipers, hydraulic lines and fitting. (ABS component parts are not covered.)

STEERING: Steering gear housing and all internal parts, power steering pump, valve body, piston and rack.

ELECTRICAL: Alternator, generator and starter.

NOTE: Seals and gaskets are not covered except when required in connection with replacement of the above parts.

4 Months or 4,000 Miles



where smart car buyers start®

"From Edmunds.com"

2013 Chevrolet Spark Hatchback



Published: 10/24/2012

What's New for 2013

The 2013 Chevrolet Spark is an all-new model.

Introduction

Delivering accessible, affordable transportation to the masses is a cornerstone of some of the most successful cars. These days, this sort of thing means a small city, and quite a number have arrived on the scene lately. General Motors has entered the game with the all-new 2013 Chevrolet Spark.

Built in South Korea, the new Chevy Spark is one of the least expensive cars on the market. It's also one of the smallest. The Spark is 14 inches shorter than the Chevrolet Sonic, the next smallest car in Chevy's lineup. And while the Spark might look peculiar with its big body and small wheels, it packs enough personality and available features to fend off any perception as an econo-pod. As a fun palette of unconventional exterior colors suggests, the Spark is cheap but cheerful.

Inside its cabin, the Spark displays a simple, clean design with enough chic sculpting and color flourishes that help you overlook the hard plastic surfaces. And while the base model is somewhat spartan, it comes standard with power windows, air-conditioning and a radio. Higher trim levels offer additional electronics and conveniences niceties, although they come at price points that are within striking distance of more desirable hatchbacks.

In price and personality, the 2013 Chevrolet Spark is one of the best subcompact choices. The base model costs far less than the Fiat 500 and Scion iQ, and the Spark's four-door body style adds a bit of extra practicality. It lacks the Fiat's style or the Scion's parking ease, however. We'd

also suggest looking at more traditional hatchbacks, since the Ford Fiesta and Kia Rio are more substantial and appealing to drive. But the 2013 Chevrolet Spark is tops at the bottom line and refined enough to make you proud of your new ride.

Body Styles, Trim Levels, and Options

The 2013 Chevrolet Spark is a small, four-door hatchback offered in LS, 1LT and 2LT trims. Features from the upper trims are not available as options on supporting models.

Standard LS features include 15-inch alloy wheels, air-conditioning, power windows, 60/40-split-folding rear seats, a height-adjustable driver seat, a tilt-only steering wheel, a trip computer, OnStar telematics and a four-speaker radio with an auxiliary audio jack.

Opting for the 1LT trim adds power-adjustable mirrors, cruise control, remote keyless entry, floor mats, the MyLink touchscreen interface, Bluetooth phone and streaming audio, steering-wheel-mounted audio and phone controls, a six-speaker audio system with USB/iPod integration, satellite radio and Internet radio from integrated smartphones.

The 2LT top trim adds foglights, roof rails, sporty front and rear fascia treatments, chrome exterior trim, faux leather upholstery, front heated seats and a leather-wrapped steering wheel.

Powertrains and Performance

Powering the 2013 Chevrolet Spark is a 1.2-liter four-cylinder engine that produces 84 horsepower and 83 pound-feet of torque. Power is sent to the front wheels through a standard five-speed manual or optional four-speed automatic transmission.

Chevrolet estimates a Spark with a manual transmission will accelerate from zero to 60 mph in 10.5 seconds, while the automatic will require more than 12 seconds. Compared to average subcompacts, the Spark trails them to 60 mph by 1-2 seconds. The EPA estimates fuel economy at 32 city/38 highway and 34 mpg combined for the manual and 28/37/32 mpg for the automatic.

Safety

Standard safety features on the 2013 Chevy Spark include four-wheel antilock brakes (front discs, rear drums), hill-hold assist, stability and traction control, front and rear side airbags, full-length side curtain airbags and front-seat knee airbags. OnStar is also standard and includes automatic crash notification, on-demand roadside assistance, remote door unlocking, stolen vehicle assistance and turn-by-turn navigation.

Interior Design and Special Features

The 2013 Chevrolet Spark features a simple, modern interior accented by body-colored dash and door panels. Hard plastic surfaces are about what you'd expect in an affordable hatchback, but the Spark offers some well-textured elements that suggest otherwise. Sporty gauges add further visual interest, featuring both a traditional speedometer and a digital multifunction display.

The available MyLink touchscreen also adds to the Spark's modern vibe with sharp graphics and intuitive menus, although it's not without faults. The screen sometimes fails to register inputs and

requires repeated taps, but it's far better than the MyFordTouch interface. The hollow, flat sound quality from either the base or MyLink audio systems leaves much to be desired.

The upright position of the front seats might foster the impression that you're sitting on the car rather than in it. The seats also lack any worthwhile lateral support, although most body types will find them comfortable enough for long stretches of time. The rear seats are better suited to smaller passengers, however, as low seat cushions and headrests will likely draw complaints from average-sized adults.

Behind the rear seats, only 11.4 cubic feet of cargo can be crammed into the narrow space. Flipping the seat cushions forward and folding the seatbacks provides a flat cargo floor and a more accommodating 31.2 cubes. For larger items, the 2LT trim provides a functional roof rack.

Driving Impressions

With only 84 hp -- less than many motorcycles -- it's clear that the 2013 Chevrolet Spark is not intended to excite or inspire. To its credit, **there's adequate acceleration for merging onto freeways when the manual transmission is in place.** The shift throws are unusually long in order to reduce effort, yet the well-spaced gates make for precise gearchanges.

On appearance alone, the Spark's tiny wheels and big body give the impression of a European cargo van left too long in the clothes dryer. This impression is reinforced behind the wheel, as it drives with a top-heavy feel on both the open highway and around tight corners. Road and wind noise are likewise noticeable, but no more intrusive than in other cars at this price. Although far from a sport sedan, this small Chevy still manages to deliver well-mannered driving characteristics overall.

"Copyright Edmunds.com, Inc. All rights reserved. First published on www.edmunds.com and reprinted with permission. Edmunds and the Edmunds.com car logo are proprietary trademarks of Edmunds.com, Inc."



where smart car buyers start®

"From Edmunds.com"

The best car we've ever owned!

By **witnessofjesus** on 08/27/12 00:08 AM (PDT)

Vehicle

2013 Chevrolet Spark 1LT 4dr Hatchback (1.2L 4cyl 4A)

Review

We've had our 2013 Chevy Spark for about three weeks now and it's the best car ever! We love using the Chevy MyLink Infotainment system that allows us to stream audio via our Smartphone using Pandora and Stitch applications, with more applications to follow in the near future.

Favorite Features

Chevy MyLink Infotainment System Spacious Interior Sleek Exterior Comfortable Seats Cooling A/C Bluetooth Calling Integrated Audio Controls OnStar Sirius XM Radio

Suggested Improvements

The only improvement I would suggest is to give it a little more horse power, but once she's up to speed, she drives nicely at 75 and even 80 MPH on the highway.

"Copyright Edmunds.com, Inc. All rights reserved. First published on www.edmunds.com and reprinted with permission. Edmunds and the Edmunds.com car logo are proprietary trademarks of Edmunds.com, Inc."



Your AutoCheck Vehicle History Report

Report Run Date: October 16, 2014 3:20:50 PM EDT

2013 Chevrolet Spark LS

VIN: KL8CA6S92DC603716

Class: Small Car - Budget

Year: 2013

Engine: 1.2L I4 MFI

Make: Chevrolet

Country of Assembly: South Korea

Model: Spark LS

Vehicle Age: 1 year(s)

Style/Body: Hatchback 4D

Calculated Owners: 1



**ONE
OWNER**

Calculated Owners: 1



Accident Check

Reported accidents: **0**



Title and Problem Check

Your vehicle checks out:



Odometer Check

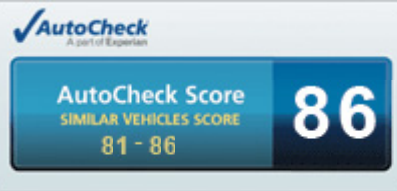
Your vehicle checks out:
Last Reported Odometer Reading: 15



Vehicle Use and Event Check

Specific vehicle use(s) or events reported

This vehicle's AutoCheck Score



The AutoCheck Score is a summary of your vehicle's history. It lets you compare similar vehicles with ease.

This vehicle qualifies for Buyback Protection



Safeguard your investment with AutoCheck Buyback Protection. It reduces the risk in buying a used vehicle.

Continued on next page

Accident Check

Not all accidents / issues are reported to AutoCheck.



Your Vehicle Checks Out: There have been no accidents reported to AutoCheck for this 2013 Chevrolet Spark LS (KL8CA6S92DC603716). AutoCheck receives its accident data from government sources and independent agencies, and based on the information available to us, we have found that no accidents have been reported on this vehicle.



**NO ACCIDENT
FOUND ON RECORD**

Title and Problem Check



Your Vehicle Checks Out: AutoCheck's database for this 2013 Chevrolet Spark LS (KL8CA6S92DC603716) shows no negative titles or other problems. When reported to AutoCheck, these events can indicate serious past damage or other significant problems, and disqualifies the vehicle for AutoCheck Buyback Protection. Check the [Vehicle Use and Event Check](#) for reported accidents that can affect vehicle safety and value.

**0 Problem(s)
Reported:**

15 Title/Problem areas checked:

	No abandoned title record
	No damaged title or major damage incident record
	No fire damaged title record
	No grey market title record
	No hail damage title record
	No insurance loss title or probable total loss record
	No junk or scrapped title record
	No manufacturer buyback/lemon title record
	No odometer problem title record
	No rebuilt/rebuildable title record
	No salvage title or salvage auction record
	No water damaged title record
	No NHTSA crash test record
	No frame/unibody damage record
	No recycling facility record

Odometer Check



Your Vehicle Checks Out: AutoCheck examined the reported odometer readings [reported to AutoCheck](#) for this 2013 Chevrolet Spark LS (KL8CA6S92DC603716) and no indication of an odometer rollback or tampering was found. AutoCheck uses business rules to determine if reported odometer readings are significantly less than previously reported values. Not all reported odometer readings are used. Title and auction events also report odometer tampering or breakage.

0 Problem(s) Reported:	Mileage	Date Reported
---------------------------	---------	---------------

	15	10/05/2013
--	----	------------

Vehicle Use and Event Check



Information Reported: AutoCheck shows additional vehicle uses or events [reported to AutoCheck](#) for this 2013 Chevrolet Spark LS (KL8CA6S92DC603716). This includes reported vehicle uses such as rental or lease, and events such as whether the vehicle has been reported to have had a loan/lien or a duplicate title issued. Other events show if the vehicle has a reported accident and how many calculated accidents or if it has been reported stolen or repossessed. It is recommended to have pre-owned vehicles inspected by a third party prior to purchase.

0 Event(s) Reported:	6 Vehicle uses checked:
-------------------------	-------------------------

	No fleet, rental and/or lease use record
	No taxi use record
	No police use record
	No government use record
	No livery use record
	No driver education record

1 Event(s) Reported:	9 Vehicle events checked:
-------------------------	---------------------------

	No accident record reported through accident data sources
	No corrected title record
	No duplicate title record

	No emission/safety inspection record
	Loan/Lien record(s)
	No fire damage incident record
	No repossessed record
	No theft record
	No storm area registration/title record

Continued on next page

Detailed Vehicle History

Below are the historical events for this vehicle listed in chronological order. Any discrepancies will be in bold text.

Report Run Date October 16, 2014 3:20:50 PM EDT
Vehicle: 2013 Chevrolet Spark LS (KL8CA6S92DC603716)



Event date	Location	Odometer reading	Data Source	Details
10/05/2013	SHELBYVILLE, IN	15	Motor Vehicle Dept.	TITLE (Title #:13788198000021) (Lien Reported)
10/08/2013	SHELBYVILLE, IN		Motor Vehicle Dept.	REGISTRATION EVENT/RENEWAL

This Vehicle's Glossary

Below are the specific definitions for events that appear in this vehicle's report.

More information is available in the full [AutoCheck glossary](#).

Term	Section Location	Definition
Loan/Lien	Vehicle Use and Event Check	A loan/lien is the legal right to take and hold or sell the vehicle of a debtor as security or payment for a debt. Normally, a vehicle will have a lien due to a loan or unpaid repair bill against the vehicle. Check with the seller to ensure that the lien has been satisfied.

AutoCheck Terms and Conditions

This report, and any reliance upon it, is subject to [AutoCheck Terms and Conditions](#). If you obtained the report from a dealer, the dealer has been provided with these Terms & Conditions and can share them with you. These AutoCheck Terms and Conditions are also available at any time at www.autocheck.com/terms or by writing to Experian: Experian Automotive C/O AutoCheck Customer Service 955 American Lane Schaumburg IL 60173

Buyback Protection Terms and Conditions

This vehicle (KL8CA6S92DC603716) qualifies for [AutoCheck Buyback Protection](#). If you obtained the report from a dealer, the dealer has been provided with the terms and can share them with you. These Buyback Protection Terms and Conditions are also available to you at any time at www.autocheck.com/bbptterms or by writing to Experian: Experian Automotive C/O AutoCheckCustomer Service 955 American Lane Schaumburg IL 60173

About AutoCheck

AutoCheck vehicle history reports by Experian Automotive is the leading vehicle history reporting service. With expert data handling, the Experian Automotive database houses over 4 billion records on a half a billion vehicles. Every AutoCheck vehicle history report will give you confidence when buying or selling your next used vehicle, with superior customer service every step of the way.

Patent Notice

Certain aspects of this vehicle history report may be covered by U.S. Patent 8,005,759.



Welcome to Ray Skillman Auto Mall

Ray Skillman Auto Mall in Indianapolis, IN also serving Central, IN and Greenwood, IN is proud to be an automotive leader in our community. Since opening our doors, Ray Skillman Auto Mall has maintained our solid commitment to our customers, offering a wide selection of cars and trucks and ease of purchase.

Whether you are in the market to purchase a new or pre-owned vehicle, if you need financing options, we'll help you find a car loan that works for you! Even if you have bad credit, or are a first time car buyer, you can trust that Ray Skillman Auto Mall will professionally fit you into the automobile of your choice.

Ray Skillman Auto Mall has a professionally managed Service and Parts Departments open extended hours to accommodate our customers' busy schedules; and, as always, Ray Skillman Auto Mall offers competitive pricing for your automotive maintenance needs. Please feel free to contact us at (317) 293-8060 if you have any questions or comments.

Ray Skillman Auto Mall offers a full line of service areas including:

- New Automobile Sales
- Pre-owned automobile Sales
- Auto Loans and Financing
- Certified service department
- Full selection of Hyundai, Kia, Mazda, Mitsubishi parts and accessories

Scan Here to Meet Our Staff





Among all the car dealers that you can find, how do you distinguish the exceptional from the average? There are several characteristics that you need to look for when choosing among them - characteristics that Ray Skillman West Auto Mall constantly strives to possess:

- **Longevity/Reputation** - Ray Skillman West Auto Mall is one of the most established car dealers in Indianapolis. Our years of experience and expertise in the industry along with our services have allowed us to establish a large base of loyal customers.
- **Options** - We offer different kinds and brands of vehicles to help you choose the car you want. Whether you're looking for a brand new car or a used vehicle, you can easily find one through our inventory. We specialize in different models of Hyundai, Kia, Mitsubishi and Mazda.
- **Customer Service** - Our car dealers in Indianapolis can provide you the assistance you need in buying or servicing your car. These people are highly trained and can provide you the information you need upfront. No pushy sales talk; just assistance when you need it, where you need it.
- **Financing** - Unlike other Indianapolis car dealers, Ray Skillman West Auto Mall offers different finance programs to help you purchase the vehicle you want. We provide financing assistance even to those with bad credit problems. We also offer low prices, rebates and incentives for your chosen new and used vehicle. Quick approvals and flexible terms are also guaranteed in our different finance programs.
- **Parts and Service Center** - Our car dealers in Indianapolis aren't only there to help you buy a car but also to provide you assistance when it comes to servicing your vehicle. We have a Service Department made up of well-trained staff to assist you in vehicle repairs. Our parts department offers a huge stock from top brands. We can also provide you transportation arrangements as you wait for your vehicle to be serviced at our shop.
- **Flexible Operation Hours** - Our Indianapolis car dealers are available from Mondays to Saturdays. Sales hours are from 9am-9pm (weekdays) and 9am to 7pm (Saturdays). Service and parts hours are from 7am-6pm (weekdays) and 8:30am-3:30pm (Saturdays).

Scan Here to Watch Video



Ray Skillman Community Involvement



HOPE ON WHEELS AT RAY SKILLMAN



Hyundai Hope on Wheels donates \$30,000 to Riley Indianapolis Hospital for Children To fight childhood cancer. Bill Skillman, on behalf on Hyundai Motor America and Indianapolis Hyundai dealers, Presented the check to Riley Oncologist Dr. Chie-Schin Shih.



Dr. Shih, a 2010 Hyundai Scholar, will put the funds to use in his research to help prevent the negative side effects associated with chemotherapy in treating childhood cancer.



Riley patients get involved by dipping their hands in finger paint and placing their palm prints on a white Hyundai Santa Fe. The car, which is covered in children's handprints from all over the country, is the symbol of Hyundai Hope on Wheels.



The 2010 Hope on Wheels Tour is traveling nationwide to donate more than \$2.1 million to childhood cancer research facilities. The entire Ray Skillman family of dealerships is honored and proud to be a small part of this tremendously important effort.

For more information, please visit www.hyundaihopeonwheels.org or www.rileyhospital.org



"2012 Indiana Dealer of the Year!"

AND 2013

-DealerRater.com



December 01, 2013 jwpw Avon, IN

Returned to this dealership for easy going car buying experience. It reminded us of buying a Saturn in 1992, very good people to work with.

koliphant75/30/2013

Zack was great to work with. He was very knowledgeable and friendly. He did a great job of showing us all the features of the vehicle. He made the whole process go smoothly and got us a fantastic deal. I would definitely recommend him and the dealership.

Brettballou 5/30/2013

I must say that my experience with the Ray Skillman Westside Auto Mall was the best experience I have ever had at a car dealership. Everyone there is exceptional! Eric Alcorn my salesman was fantastic and I will recommend him highly to everyone I know looking for a new vehicle.

Brett O. Ballou

mrh29705/5/2013

thanks to Mike Hendershot and Terry Hannel for helping me pick the perfect car for me and my budget. You have made this girl extremely happy! I have never had such a wonderful experience, by the time we left, it felt like we knew everyone there. And thanks for the cookies :)

July 22, 2013 gboxjack95 Indianapolis, IN

My visit was very nice! all the staff was very helpful. Audra was super to work with and does not take the answer no! she found the car I wanted and got me into it very fast. I look forward to my next purchase! thanks again Audra you rock! -

September 28, 2013 Scott Sego Indianapolis, IN

Been looking at new cars for quite some time. I looked at several cars at several places.

When I called Ray Skillman looking for a new Azera, one of the sales managers Troy answered the phone and greeted me very professionally. I told him what I was looking for and that I wanted to lease. He found the car, gave me a great price and told me to come on by and pick it up. It was that simple! When I arrived he introduced me to Audra and she took it from there. Because I was so pressed for time, I signed a form and drove the car home that day. When I arrived the next morning to do the paperwork, I had changed my mind on the color of the car and they very politely and very quickly changed me out to a different color....No questions asked. Audra took the time to show me the car, answer questions, set up my Essentials package, scheduled my first maintenance appointment and even listened to a couple of my goofy jokes! All-in-all, this was the easiest car dealer experience I've EVER had! I'll definitely recommend Ray Skillman West Auto Mall to my friends. Audra is a FANTASTIC sales lady!!

Arkissner 4/11/2013

I walked into Westside Auto Mall in a bundle of nerves. I was greeted at the door by Austin Burns who immediately calmed my nerves. I had not had a car payment in 10 years and knew that my credit was less than perfect. I was driving a Mitsubishi SUV (named Ruby) that had 245,000 miles on it and was 13 years old. I knew I had to do something to have a dependable vehicle for my job but also knew I couldn't spend a ton of money so I had to absolutely LOVE whatever I purchased. Austin stayed with me for several hours while I drove one car and then the next until finally, I decided on the Mazda 6. It was a great choice and still is. I'm saving money on gas and feel much safer in my new-to-me car! The finance department was very pleasant and knowing that my credit score wasn't the best, didn't make me feel inferior about it. Eric Murphy is a very kind soul and I'm thankful that the day that I decided to visit Ray Skillman West Side Auto, these two gentlemen were working! I will definitely recommend them to my friends and family in the market for a new or used vehicle!

Scan Here to See More Reviews on Dealer Rater

"2012 Indiana Dealer of the Year!"

AND 2013

-DealerRater.com



Ray Skillman Auto Mall Service Department Indianapolis, IN

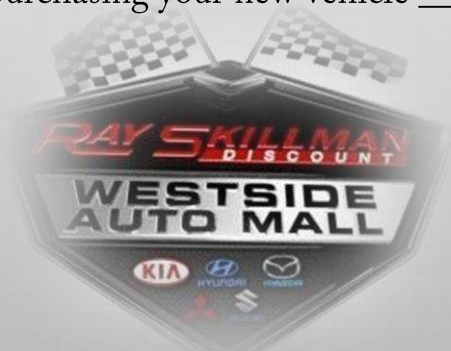
Listed below are some of the many types of services we offer to our customers. Sorry, we cannot provide pricing due to the hundreds of different makes and models for which we offer service. If you would like an estimate, please call us at (317) 293-8060 . We would be pleased to provide you with an estimate over the phone.

- Oil Change
- Tire Mounting, Rotation and Balance
- Transmission Service
- 30K, 60K, 90K Service
- Engine Diagnostic (Check engine light, fluid light, service light, etc.)
- Brake System (Pads, rotor, lines, etc.)
- Heating/Cooling Systems
- Electrical Systems
- Ignition System
- Warranty Repairs
- Head Gasket/Valves
- Exhaust Systems
- Electronic Motors (Windows, fan, etc..)
- Engine Replacement or Rebuild
- Fuel Systems (Filters, hoses, pumps, etc.)
- Steering Systems
- Belts (Timing, alternator, etc.)
- Emission Control System
- Suspension System (Axle, mounts struts, etc.)
- Clutch Repair/replacement

\$9.95 First Oil Change Coupon

Is Presented to _____ In Appreciation _____

For purchasing your new vehicle _____



Schedule Appointment Date: _____

Expiration Date: _____

VIN: _____

Authorization: _____

Disclaimer: Excludes Diesel Vehicles and Synthetic Oil

[Return to Pre-Owned Inventory](#)

[Finance Application](#)

[Contact Us](#)

[Value Your Trade](#)

[Testimonials](#)

[Payment Calculator](#)

Scan or Click
Here for
Directions

