

WELCOME TO CAR-BIO



This dealer is an **AUTHORIZED CAR-BIO DEALER**. They have contracted our company to gather all the third-party information available on each of the pre-owned vehicles in their inventory so you have all the information you need to make a completely informed buying decision. **FULL TRANSPARENCY** about the vehicle you are buying is as important as the price.

Before you purchase any pre-owned vehicle From Any Dealer, make sure the dealership provides you the CAR-BIO.

Scroll down to see the Car-Bio on this vehicle.



CAR-BIO CONSUMER GUIDE

| Vehicle Equipment | Specifications | Professional Trade Reviews | Owner Reviews |
| Vehicle History Report and Dealership Information |

2006 FORD F-150

KENDALL

www.KendallDodgeChryslerJeepRam.com



Stock #: DP550143A
ENGINE: 4.6
TRANS: 4-SPEED AUTOMATIC
COLOR: RED
ODO: 105,960
VIN: 1FTRX12W16NB64069

ABS BRAKES (4-WHEEL)
AIR CONDITIONING - FRONT
AIRBAGS - FRONT - DUAL
AIRBAGS - PASSENGER - OCCUPANT SENSING DEAC
CHILD SEAT ANCHORS
PICKUP BED TYPE, FLEETSIDE
SECURITY, ENGINE IMMOBILIZER
STEERING WHEEL, TILT-ADJUSTABLE
FRONT SEATBELTS: CENTER 3-POINT BELT
SEATBELTS, REAR CENTER SEATBELT: 3-POINT
SEATBELTS, SEATBELT FORCE LIMITERS
SEATBELTS, SEATBELT PRETENSIONERS
SUSPENSION, STABILIZER BAR(S): FRONT
ADJUSTABLE REAR HEADRESTS
BODY SIDE REINFORCEMENTS
CARGO AREA LIGHT
CLOCK
DRIVER SEAT, ADJUSTABLE LUMBAR SUPPORT: MAN
DRIVER SEAT, MANUAL ADJUSTMENTS: 8
DRIVETRAIN, DRIVEN WHEELS: REAR WHEEL DRIVE
FRONT HEADRESTS, ADJUSTABLE
FRONT POWER OUTLET

SCAN HERE TO
TAKE THE CAR-BIO
HOME



EVERY PRE-OWNED VEHICLE HAS A STORY, SEE MINE INSIDE!



KENDALL DODGE CHRYSLER JEEP RAM

13355 SW 137TH AVENUE

MIAMI, FL 33186

786-231-2000

WWW.KENDALLDODGECHRYSLERJEEPRAM.COM



CAR-BIO is a copyrighted product and law prohibits any duplication or imitation. CAR-BIO depends on third party data for accuracy and assumes no liability for incorrect data provided by such parties. This booklet is intended for informational purposes only. Dealer assumes no liability for information provided. Customers should rely on visual inspection on any vehicle prior to purchase. Price subject to change, verify with dealership. For information on CAR-BIO books, call (707) 789-9787 or visit us at www.car-bio.net © 2004-2014 CAR-BIO Vehicle photos in reviews may not be the actual vehicle for sale.

Standard Features, Technical Specifications, Awards and Accolades

VIN: 1FTRX12W16NB64069

2006 FORD F-150 SUPERCAB

MODEL YEAR: 2006
DIVISION: FORD
MODEL NAME: F-150
STYLE AND TRIM: SUPERCAB

BODY TYPE: 4 DOOR EXTENDED CAB PICKUP
MARKET CLASS NAME: 2WD STANDARD PICKUP TRUCKS
MANUFACTURER IDENTIFIER: UNITED STATES FORD
DRIVING WHEELS:

EXTERIOR

Tailgate, removable w/key lock & lift assist

Cargo lamp integrated

Black door & tailgate handles

Interval wipers

INTERIOR

Gauges-inc: voltmeter, oil pressure, engine coolant temp, speedometer & odometer

Display center-inc: warning messages & text functions

Glove box

2nd row grab handles

Driver & passenger side A-pillar grab handles

(2) instrument panel cupholders

Tilt steering column

SecuriLock anti-theft ignition (PATS)

Manual air conditioning

Matching 60/40 flip-up rear split bench seat

MECHANICAL

2-ton jack

Engine block heater *STD on retail vehicles only in AK, MN, ND, SD, MT, WI & WY. Optional on fleet vehicles*

130-amp alternator

58-amp/hr maintenance-free battery

Independent coil-over-shock double wishbone front suspension

4.6L EFI V8 engine

Solid rear axle w/leaf spring rear suspension

Front stabilizer bar

Pwr rack & pinion steering

Full-size spare tire w/lock & underframe winch-type carrier

Rear wheel drive

SAFETY

3-point safety belts at all rear seat positions

Auto lock safety belt feature for child seats

Seat Belt Minder system

Center front 2-point safety belt

Dual note horn

Seat integrated outside front lap & shoulder safety belts-inc: height adjusters, pretensioners, energy management retractors

Dual stage driver & front passenger airbags

Brakes

Drum - Rear (Yes or)

Brake ABS System 4-wheel

Disc - Rear (Yes or) Yes

Disc - Front (Yes or) Yes

Cargo Area Dimensions

Cargo Volume 65.5

Ext'd Cab Cargo Volume

Cargo Volume 55.5

Cooling System

Total Cooling System Capacity 20.0

Total Cooling System Capacity 19.7

Engine

Fuel System EFI

Displacement 4.6L/281

Engine Type Gas V8

SAE Net Torque @ RPM 293 @ 3500

Engine Oil Cooler

SAE Net Horsepower @ RPM 231 @ 4750

Exterior Dimensions

Frame Width, Rear - TBD -

Ground Clearance, Front - TBD -

Ground to Top of Load Floor 33.0

Ground to Top of Frame - TBD -

Width, Max w/o mirrors 78.9

Ground to Top of Load Floor 32.6

Height, Overall 73.5

Height, Overall 74.0

STANDARD FEATURES, TECHNICAL SPECIFICATIONS, AWARDS AND ACCOLADES
VIN: 1FTRX12W16NB64069
2006 FORD F-150 SUPERCAB

MODEL YEAR: 2006
DIVISION: FORD
MODEL NAME: F-150
STYLE AND TRIM: SUPERCAB

BODY TYPE: 4 DOOR EXTENDED CAB PICKUP
MARKET CLASS NAME: 2WD STANDARD PICKUP TRUCKS
MANUFACTURER IDENTIFIER: UNITED STATES FORD
DRIVING WHEELS:

Wheelbase 144.5

Front Tire Size P255/65R17

Wheelbase 132.5

Front Tire Size P235/70R17

Ground Clearance, Rear - TBD -

Front Tire Size LT245/70R17D

Frame

Frame Type Ladder

Front Tire Size P255/65R17

Front Tire Size P265/60R18

Interior Dimensions

Passenger Capacity 6

Spare Tire Size P265/60R18

Passenger Capacity 5

Front Tire Size P265/60R18

Rear Tire Size LT245/70R17D

Passenger Capacity 6

Spare Tire Size P265/60R18

Second Head Room 39.6

Spare Tire Size P255/65R17

Front Shoulder Room 66.5

Spare Tire Size P255/65R17

Front Leg Room 41.3

Spare Tire Size P235/70R17

Front Head Room 40.9

Rear Tire Size P255/65R17

Passenger Capacity 5

Rear Tire Size P265/60R18

Mileage

EPA Fuel Economy Est - City 15

Rear Tire Size P235/70R17

EPA Fuel Economy Est - Hwy 19

Rear Tire Size P265/60R18

Spare Tire Size LT245/70R17D

Steering

Turning Diameter - Curb to Curb 43.6

Trailer

Wt Distributing Hitch - Max Trailer Wt. 6400

Steering Type Pwr Rack & Pinion

Wt Distributing Hitch - Max Trailer Wt. 6300

Turning Diameter - Curb to Curb 46.4

Wt Distributing Hitch - Max Tongue Wt. 640

Turning Diameter - Wall to Wall - TBD -

Wt Distributing Hitch - Max Tongue Wt. 690

Summary

Body Style Supercab 5.5' Styleside

Wt Distributing Hitch - Max Tongue Wt. 680

Vehicle Name Ford F-150

Wt Distributing Hitch - Max Tongue Wt. 630

Body Style Supercab 6.5' Styleside

Wt Distributing Hitch - Max Trailer Wt. 6400

Wt Distributing Hitch - Max Trailer Wt. 6900

Suspension

Axle Type - Rear Semi-Floating

Wt Distributing Hitch - Max Trailer Wt. 6900

Wt Distributing Hitch - Max Trailer Wt. 6800

Tires

Rear Tire Size P255/65R17

Wt Distributing Hitch - Max Tongue Wt. 690

Wt Distributing Hitch - Max Trailer Wt. 6800

STANDARD FEATURES, TECHNICAL SPECIFICATIONS, AWARDS AND ACCOLADES
VIN: 1FTRX12W16NB64069
2006 FORD F-150 SUPERCAB

MODEL YEAR: 2006
DIVISION: FORD
MODEL NAME: F-150
STYLE AND TRIM: SUPERCAB

BODY TYPE: 4 DOOR EXTENDED CAB PICKUP
MARKET CLASS NAME: 2WD STANDARD PICKUP TRUCKS
MANUFACTURER IDENTIFIER: UNITED STATES FORD
DRIVING WHEELS:

Wt Distributing Hitch - Max Tongue Wt. 630

Dead Weight Hitch - Max Trailer Wt. 5000

Wt Distributing Hitch - Max Trailer Wt. 6300

Fifth Wheel Hitch - Max Trailer Wt. 6900

Fifth Wheel Hitch - Max Trailer Wt. N/A

Fifth Wheel Hitch - Max Trailer Wt. 6400

Fifth Wheel Hitch - Max Tongue Wt. 640

Fifth Wheel Hitch - Max Tongue Wt. 690

Fifth Wheel Hitch - Max Tongue Wt. N/A

Wt Distributing Hitch - Max Tongue Wt. 640

Wt Distributing Hitch - Max Tongue Wt. 680

Spare Wheel Material Steel

Rear Wheel Material Aluminum

Rear Wheel Material Steel

Rear Wheel Material Aluminum

Rear Wheel Material Steel

Front Wheel Material Steel

Spare Wheel Size 17 x 7.5

Rear Wheel Size 17 x 7.5

Front Wheel Material Aluminum

Front Wheel Material Aluminum

Rear Wheel Size 18 x 7.5

Front Wheel Size 18 x 7.5

Front Wheel Size 17 x 7.5

Front Wheel Material Steel

Transmission

Trans Type 4

Clutch Size

Transfer Case Power Take Off

Weight Information

Gross Vehicle Weight Rating Cap 7050

Gross Combined Wt Rating 12200

Gross Combined Wt Rating 11700

Gross Combined Wt Rating 12200

Gross Vehicle Weight Rating Cap 6650

Gross Combined Wt Rating 11500

Gross Vehicle Weight Rating Cap 6950

Gross Vehicle Weight Rating Cap 6700

Gross Combined Wt Rating 11700

Gross Combined Wt Rating 12000

Gross Combined Wt Rating 12000

Gross Combined Wt Rating 11500

Wheels

Spare Wheel Size 18 x 7.5

STANDARD FEATURES, TECHNICAL SPECIFICATIONS, AWARDS AND ACCOLADES
VIN: 1FTRX12W16NB64069

2006 FORD F-150 SUPERCAB

MODEL YEAR: 2006
DIVISION: FORD
MODEL NAME: F-150
STYLE AND TRIM: SUPERCAB

BODY TYPE: 4 DOOR EXTENDED CAB PICKUP
MARKET CLASS NAME: 2WD STANDARD PICKUP TRUCKS
MANUFACTURER IDENTIFIER: UNITED STATES FORD
DRIVING WHEELS:



786.231.2160

13355 SOUTHWEST 137TH AVENUE
MIAMI FL 33186

Stock# _____ Model _____ Date _____ Miles _____

Vehicle ID# _____ Year _____ RO# _____ Technician _____

INSPECTION REPORT

ROAD TEST

- Passive Safety Systems 9SRS, seat belts- all)
- Mirrors (operation, heat, inside-outside)
- Indicator Lights (gauges/elec. Inst. Panel/turn indicator)
- Engine Start- idle (cold, warm)
- Engine Operation (at normal temperature)
- Shifting (automatic/manual transmission, clutch)
- Acceleration (0 to 50/passing/cursing)
- Braking (straight stop/anti-lock operation if applicable)
- Steering/Turns/Direction (ease noise, alignment)
- Body/Chassis integrity (noise/vibration/harshness)
- Transfer case (F/RWD, 4W, AWD)
- Cruise control (hold, accel, cancel)
- Windshield wipe/wash
 - (Operation/blade wipe clean w/o streaks)
- Speedometer/Odometer (operational)
- Tilt-Wheel (operation)
- Sound System (Radio, Tape, CD, Speakers, Antenna)
- Heater & Air (Blower, controls)
- Horn (operation, function)

FUNCTIONAL

- Key(s) /Key Fob (functional)
- Security Codes (alarms, keyless entry, radio)
- Luggage Compartment (Spare, air pressure)
- Convertible top (Operational)
- Interior Lights (map, lights, dash lights)
- Exterior Lights (headlights, brake & high mount)
- Doors/Door Locks (power lock operation)
- Seats (operation, neat)
- Fuel Door/Trunk/Hood/Hatch release (operation)
- RF Windows (operation, switches full travel)
- LF Windows (operation, switches full travel)
- RR Windows (operation, switches full travel)
- LR Windows (operation, switches full travel)
- Alarm/Telephone (operation)
- Power Source/Cigarette lighter (operational)
- Parking brake (operation)
- Sun/Moon Roof (operation)
- Accessories (operation)

UNDER HOOD

- Visual (loose/missing components, leaks, labels, decals)
- Electrical systems (battery, cables, belts, charge)
- Engine Cooling System (level, hoses, condition)
- Power Steering System (level, pump, lines)
- Brake System (level, Master Cylinder lines)
- Ignition System (wires, condition, wiring)
- Fuel System (lines, leaks, connections)
- Vacuum System (hose, condition)
- Air Conditioning System (leaks, lines, routing)
- Belts (tension, wear)
- Under Vehicle
- Visual (body, under body, lower body)
- Frame (no signs of previous repairs or damage)
- Exhaust System (pipes, converter, muffler)
- Brake Pads, shoes (conditioning, lining)
- Calipers, rotors, drums, (condition)
- Hydraulics (lines, hoses)
- Tires (tread depth type)
- Wheels (OEM, matching brand, type)
- Shock Absorbers/ Struts (operation leaks, etc)
- Springs & Sway bars (mounts, bushings, etc)
- Control Arms (operation, leaks etc)
- Linkage/Steering (tie Rods, linkage)
- Engine/Transmission/Transfer Case (leaks)
- Drive Line (Drive Shafts, axle's leaks, cv joints)
- Differentials/axels (leaks, cv joints)
- Gear/Rack & Pinion (leaks & mounting)
- Parking Brake Cable (condition, fraying)

EXTERIOR

- Under Hood (finish, insulation)
- Front Bumper (fascia, guards, finish)
- Grille (headlights, emblems)
- Hood (emblems, finish)
- LF Fender (finish, trim)
- LF Door (finish, trim)
- LR Fender (finish, trim)
- LR Door (finish, trim)
- RR Fender (finish, trim)
- RR Door (finish, trim)
- RF Fender (finish, trim)
- RF Door (finish, trim)
- Roof (finish, trim)
- Glass (cracks, chips, scratches, pitting)
- Wheels/Wheel Covers (scratches, pitting)
- Accessories (operation)

Interior

- Instrument Panel (trim, controls, console)
- Clock/Timer (check, reset)
- Driver Seat (cushions, trim)
- Driver Door (controls, trim)
- Front Passenger Seat (cushions, trim)
- Front Passenger Door (controls, trim)
- Front Carpet & Mats (condition)
- Rear Seats (cushions, trim)
- LR Door/Quarter Trim (controls, trim)
- RR Door/Quarter Trim (controls, trim)
- Rear Carpet & Mats (condition)
- Headliner (condition)
- Visors (function)
- Luggage Compartment/Cargo Area (trim)
- Repair Upholstery (tears, holes)

MAINTENANCE

- Lube/Oil/Filer
- Inspect/clean air filter (replace if necessary)
- Inspect/clean other filters (to manufacture's schedule)
- Inspect/top off fluids (cool, brake, transmission, washer etc)
- Lubricate Pivot points (hinges, striker, parking brake)
- Tire Pressure (check/adjust)
- Emission/Diagnostic trouble codes
 - (meets state & local standards)
- Fuel Level

INTERIOR DETAILING

- Clean interior surfaces and ashtrays
- Vacuum Carpet and trunk/carpet area
- Clean Glass Surfaces
- Clean Vinyl Surfaces
- Clean Headliner/seats/interior cloth trim

EXTERIOR DETAILING

- Clean Engine Compartment
- Touch-up Recondition minor surface scratches
- Remove tar and road oil
- Exterior wash & polish
- Tire Shine
- Other _____

Comments:

Ask your Sales Consultant for more Information About our Inspection Report



2006 Ford F-150

Six distinctly different trucks.

By New Car Test Drive

Overview

The Ford F-150 delivers all the big-truck attributes of toughness, strength, and cargo capacity, but offers interior design and comfort that would rival some luxury cars. It's also stylish, among the best-looking in a group of handsome full-size pickups for the 2006 model year.

Properly equipped, an F-150 can tow 9,900 pounds or haul more than 3,000 pounds in the bed. The F-150 is comfortable as well, with a quiet and refined ride and comfortable interiors that show attention to detail. Handling is excellent for a pickup.

The F-150 earned a five-star safety rating from the government (NHTSA) in frontal crash testing and was named a "Best Pick" in offset-crash rating from the Insurance Institute for Highway Safety. F-150 comes equipped with dual frontal airbags designed to deploy according to the severity of the crash and who or what is occupying the seat. Seat belts, your first line of defense in any crash, are equipped with pre-tensioners and energy-management retractors.

For all these reasons, the F-150 has been America's best-selling full-size pickup for 28 consecutive years. It's the most important, most profitable vehicle Ford makes.

F-150 was last redesigned in 2004, when it earned numerous awards, including North American Truck of the Year. Ford has not significantly changed the F-150 since then except to expand the lineup every year with new trim levels, variations, and specialty models.

For 2006, SuperCrew (crew cab) models will be available with a longer, 6.5-foot bed; as well as the standard 5.5-foot short bed. A limited-production Harley-Davidson edition, previously offered on Super Duty models, is now available as an F-150 SuperCab (extended cab). SuperCrew buyers can choose the King Ranch model, lavishly outfitted in Castano leather, one of our favorites. At the bottom of the lineup is a V6 work truck.

F-150 offers more choices than any other pickup nameplate, with six distinct trim variations, the industry's widest variety of body configurations (three cab styles, three bed lengths, two bed styles), and a choice of V8 engines, all thoughtfully designed to address the distinct needs and wants of

individual buyers.

Model Lineup

The 2006 Ford F-150 is available in six distinct trim levels. The XL, STX, XLT, FX4, Lariat, and King Ranch each boast their own interior style and features.



Engines, suspensions and cab configurations are designed to meet specific needs. A myriad of configurations and options within these model lines ensure buyers can select the right pickup for them.

The 2006 Ford F-150 SuperCrew (crew cab) is available with a 6.5-foot bed, mounted on a new 150.5-inch wheelbase. Wheelbases as long as 163.0 inches (e.g., a SuperCab with the 8-foot long bed) are available.

Three engines are offered: a 4.2-liter V6, a 4.6-liter V8, and a 5.4-liter V8. The V6 offers a choice of four-speed automatic or five-speed manual transmission, but comes in only the most basic F-150s. In the models most consumers will buy, the 4.6-liter V8 is standard. Both V8s come with four-speed automatic transmissions, although the 5.4 comes with a heavy-duty unit.

XL is the budget-priced F-150 with a work-truck interior: vinyl-covered 40/20/40 bench seats, black vinyl floor covering, and an all-plastic dashboard housing a basic AM/FM radio. XL is readily identifiable by its black grille and fascia, painted silver bumpers and 17-inch steel wheels. Regular cab and SuperCab (extended cab) styles are available, and the latter comes with air conditioning (an \$850 option on regular cabs).

STX is sportier than the XL, with body-color bumpers and body-color trim for the black grille, and 17-inch cast aluminum wheels. Cloth seats, a CD player, and air conditioning come standard. STX comes in Styleside and Flareside body styles, in regular cab or SuperCab, with either a 6.5-foot or a 5.5-foot cargo box. An audiophile sound system with subwoofer and six-disc CD changer is optional..

XLT is the most popular model, nicer and better-equipped than XL. It comes with chrome bumpers and a honeycomb grille that sets it apart from the other models. XLT comes in regular cab, SuperCab or SuperCrew; and depending on cab style buyers can choose 5.5-, 6.5-, or 8-foot bed lengths, plus Styleside or Flareside beds. Carpeting is standard, as is a premium cloth upholstery on the standard bench seats or optional captain's chairs. The XLT instrument panel gets more flash than either the XL or STX dash; and power windows, mirrors and locks with remote keyless entry are standard. The XLT features an overhead rail console system that the owner can tailor to his or her needs. Fog lamps come standard on 4WD XLTs.

FX4 is a special off-road model. The interior features a leather-wrapped steering wheel, a floor shifter, and chrome accents; while the exterior is distinguished by a unique grille, 18-inch cast aluminum wheels, and body-color or Dark Shadow Gray bumpers, depending on paint choice. FX4 is available in regular cab, SuperCab, and SuperCrew body styles, but the long (8-foot) bed is not available. The standard engine is the 5.4-liter V8. The FX4 has its own instrument package with

carbon mesh accents on the metallic dashboard. Captain's chairs in cloth or leather are optional.

Lariat is the luxury model, distinguished visually by a unique grille design (chrome housing around Arizona Beige insert) and bright-finish 18-inch aluminum wheels. Bumpers are chrome or Arizona Beige. Lariat features black-on-cream instruments, lots of wood trim and brushed metal, a multi-function steering wheel, and a shiny floor shifter mounted in a floor console. A power-adjustable and leather-trimmed 40/20/40 split bench seat with seat memory is standard, along with power-adjustable floor pedals, an in-dash message center, and climate control. Heated power leather captain's chairs are optional. Lariat 2WD models are available in all three body styles, but 4WD versions come only with Styleside fenders.

King Ranch features rich Castano leather designed to capture the spirit of the historic Texas cattle ranch. It is built only as a SuperCrew, and distinguished by a color-coordinated grille, Arizona Beige running boards, and other special trim. Inside are power-adjustable and heated captain's chairs in front, a 60/40 split bench seat in back, and unique interior trim. Power-fold heated side mirrors with approach lamps are standard.

Dozens of options are available at every level, including mechanical or automatic shift-on-the-fly four-wheel drive, skid plates, limited-slip axle, traction assist for 2WD V8s, 35.7-gallon fuel tank, fog lamps, two-tone paint, 20-inch wheels, chrome dress-up packages, a six-disc CD changer, Sirius Satellite Radio, a heavy-duty payload package, a trailer tow package, a snow plow package, and a rear-seat entertainment system.

Also available is a limited-production Harley-Davidson edition finished in Monotone Black with red and blue accent stripes, and flashing 22-inch polished aluminum wheels, a chrome billet grille and blackout headlamps. The Harley edition offers conventional 2WD or full-time all-wheel-drive (AWD), the latter a first for any F-150. Interiors are finished in black airline leather with chrome and Piano Black details. The only available body configuration is a SuperCab with a 6-1/2-foot Styleside box.

Walkaround

In the late 1990s, F-150 went aerodynamically curvy, and although it remained number one in sales, not everyone liked the look. So for 2004, Ford returned the F-150 to its square-shouldered roots, with a more utilitarian look that continues essentially unchanged for 2006.



It's a functional look, but in its own way it's at least as stylish as the much-heralded Dodge Ram. In fact, the F-150 has a unique image, no small feat when designing within the hard parameters imposed by a pickup. It's at once crisp, bold, and sturdy. In short, we think the F-150 is a great-looking truck.

The F-150 shares styling cues with Ford's handsome Super Duty pickups, including the sharp downward drop in the forward part of the door windows, allowing a clear view of the massive outside mirrors. A high beltline gives the truck visual strength and makes occupants feel more secure.

The whole nose is square in concept, with a large, bold, big-rig grille opening. Yet the front fascia wraps around to the fenders for a precise, sophisticated appearance. The bodyside and cargo box sheet metal is chiseled, though it looks slab-sided at the same time, a theme that carries through to the tailgate. F-150 is both upscale and utilitarian, a look that's very appealing.

The different trim levels are quite distinctive. Just one example: XLT and Lariat have a honeycomb grille (black on XLT, Arizona Beige on Lariat), while XL, STX, FX4, and King Ranch wear a bar-style grille.

Practical considerations are a big part of the design, and some of this can be easily seen. **Every bed, no matter which length or style, is more than 22 inches deep, for a generous margin when hauling larger cargoes.** All models, including the regular cab, have four opening doors on the body with storage room and/or seats behind the front seat. The SuperCab (extended cab) doors are larger than the vestigial doors on the standard cab, while, as mentioned, the SuperCrew has four full-size doors.

Interior Features

The Ford F-150 features six distinctly different interiors, and your take on each will vary according to how you think your pickup should be outfitted and how much you want to spend. The basic XL is surprisingly nice. At the other end of the spectrum is the King Ranch, which evokes images of Texas and cowboys. We love the King Ranch, but it's not for everyone.



We found the XLT's front bench seats attractive, but they are flat and lack support. The front bench is split three ways. The center section flips down to reveal a center console with storage and cup holders. The console is flat, unlike GM's, so you can put a clipboard on top of it and it won't immediately slide off.

The FX4's optional captain's chairs were much more comfortable, offering decent support for the hips and back. They also looked great, trimmed in black leather with light gray stitching. Adjusting the power seats may be a little awkward for drivers with big arms, however, because the clearance between the door armrest and the seat is a little tight. Rake adjustment on the power driver's seat is manual, and raking it forward can be a bit awkward. The center console between the captain's chairs is deep, holds a lot of stuff, and features a pair of big, solid cup holders. The floor shifter for the automatic transmission works very well.

Radio and HVAC (heater) controls are plain but straightforward and easy to operate. Delayed accessory power means you can turn off the ignition, remove the key, and continue to operate the power windows and run the radio until you open the door.

The Lariat has one of the classiest, quietest, most completely equipped pickup truck interiors we have spent time in. Lariat comes with every known amenity. In Lariat trim, an F-150 rivals luxury cars in terms of design, materials and completeness, with beautiful, rich wood trim, both shiny and matte metallic finishes on major panels, and a lovely three-pod instrument panel behind the multi-function steering wheel.

At every level, attention to detail is obvious. Giant mirrors afford an excellent view rearward. There's a hook for your dry cleaning. Optional rear park-assist helps greatly when parallel parking one of these big rigs. Its alarm beeps ever more rapidly as you back toward something and it even turns down the radio to make sure you hear its warning. A set of overhead storage bins is available that snap into rails; Ford offers five different sets of these bins, and the aftermarket is making additional versions with overhead entertainment systems and other specialty items built in. One of our few gripes is that the clear plastic over the instrument panel is too reflective in bright sunlight, making the instruments hard to read. Everything else inside functions very well and looks beautiful.

The SuperCrew features a roomy back seat where adults should find comfortable and convenient accommodations. The big difference in the back seats between SuperCrew and SuperCab models is rear legroom: 39.0 inches for SuperCrew, 32.7 inches for SuperCab. The rear seat bottom flips up for carrying cargo behind the front seats.

Driving Impressions

The Ford F-150 offers a ride that's smooth and firm, with a minimum of body roll in corners, and a nice, plush ride over cobbled pavement, rutted dirt roads, and freeway slabs. We found this to be true in all the models we drove. Among them: an XLT SuperCab 4WD, a Lariat SuperCab 2WD Styleside with a 6.5-foot bed, an XL with a standard cab, and an FX4 SuperCrew. We were delighted by the ride of the FX4. It seems smoother than most off-road pickups. It offered a firm but comfortable ride around Los Angeles even with no weight in the bed to pre-load the rear suspension.



The power rack-and-pinion steering in the F-150 is exemplary. It's responsive, without hesitation or delay, and without being darty or overly quick or nervous. The truck tracks like a laser beam, turns in quickly, and recovers quickly even with no load in the bed.

The F-150's excellent ride and handling are benefits of a frame that's fully boxed with hydroformed front rails. The seven-crossmember skeleton is stronger, stiffer and heavier than any previous Ford pickup frame. The current frame is nine times more resistant to twisting and 50 percent more resistant to bending than the C-channel frame used up through 2003.

The front suspension is a double-wishbone setup for both 2WD and 4WD models. The rear suspension has outboard shock absorbers to control rear-end motions better in quick maneuvers. The outboard shock position provides better control on washboard surfaces, reducing the tendency to skate around in bumpy corners. The rear leaf springs are three inches wide. Liquid-filled motor mounts and a long list of other measures keep vibration and noise to a bare minimum.

Braking is smooth and responsive. They start slowing the truck just a little way into the pedal travel, and the more you push the pedal, the more acute the braking becomes; the absence of dead space in the pedal travel is a welcome relief from typical truck practice. All F-150s come with four-wheel vented disc brakes and ABS.

We found the big 5.4-liter V8 smooth and quiet. Rated at 300 horsepower and 365 pound-feet of torque, it delivers quick acceleration, although it doesn't seem as responsive as the 5.6-liter V8 in

the Nissan Titan. The F-150's 5.4-liter V8 is part of Ford's Triton engine series, and features a single overhead camshaft per cylinder bank, three valves per cylinder, and variable valve timing. EPA estimates for a 5.4-liter F-150 with 2WD are 15/19 mpg City/Highway. A flexible-fuel (gasoline/ethanol) version of the 5.4 is also available for the 2006 model year. The high-capacity 4R75E four-speed automatic transmission that comes with the 5.4 is smooth and responsive, downshifting quickly and crisply when you punch it, and shifting almost seamlessly when cruising.

The 4.6-liter Triton V8 also features aluminum overhead-cam heads, but with a more conventional two valves per cylinder. Rated at 231 horsepower and 293 pound-feet of torque, it offers a broad torque band, with 90 percent of its peak torque available at just 2000 rpm for strong towing performance and solid acceleration when hauling heavy loads. The 4.6-liter is also rated 15/19 mpg.

The 4.2-liter V6 is an attractive option for work trucks. It's a nice, smooth engine of the traditional pushrod-overhead-valve kind, and we liked the XL model we drove with it, though performance is sluggish by modern standards. The V6 is rated at 202 horsepower and 260 pound-feet of torque. A V6 2WD automatic rates 16/20 mpg; with a five-speed manual transmission, city mileage actually drops to 15 mpg.

The Harley-Davidson edition comes with a suspension biased further toward precision handling. The 5.4-liter V8 comes with a unique exhaust tuned for more hot-rod rumble. The available all-wheel-drive (AWD) system is electronically controlled and continuously monitors throttle position and wheel speeds to determine how much power to shift from the rear wheels to the front.

Summary

The Ford F-150 delivers a strong combination of style, interior comfort, performance, ride and handling. With six major trim variants and a choice of drivetrains and body styles, there's an F-150 for every type of pickup owner.

NewCarTestDrive.com correspondent Jim McCraw reported from Dearborn, Michigan, with Mitch McCullough reporting from Los Angeles.

[More Reviews](#)

Model Line Overview

Model lineup:	Ford F-150 XL regular cab 2WD; STX SuperCab 2WD Flareside; XLT SuperCrew 4WD; FX4 SuperCab 4WD LWB; Lariat SuperCrew 2WD; King Ranch 4WD; Harley-Davidson 4WD
Engines:	5.4-liter sohc 24-valve V8
Transmissions:	4-speed automatic
Safety equipment (Standard):	ABS, smart front airbags
Safety equipment (Optional):	traction control, reverse sensing system

Basic warranty:	3 years/36,000 miles
Assembled in:	Kansas City, Missouri; Norfolk, Virginia; Dearborn, Michigan

Specifications As Tested

Model tested:	Ford F-150 4WD Flareside SuperCab XLT
Standard equipment:	air conditioning, power steering, power disc brakes, power windows, power locks, console, cruise control, AM/FM/CD, remote keyless entry, premium cloth, 40/20/40 split bench front seat w/manual driver and passenger lumbar
Options as tested:	5.4-liter V8 (\$895); electronic shift-on-the-fly 4WD (\$160); 255/70R17 tires (\$325); limited-slip rear differential with 3.55 axle ratio (\$300); trailer tow package (\$350); platform running boards (\$250); AM/FM/6 CD stereo (\$300); keyless entry keypad (\$75); reverse sensing system (\$245); power driver's seat (\$285); two-tone paint (\$300)
Destination charge:	850
Gas Guzzler Tax:	N/A
Layout:	four-wheel drive
Engine (Optional):	202-hp 4.2-liter ohv 12-valve V6; 231-hp 4.6-liter sohc 16-valve V8; 300-hp 5.4-liter sohc 24-valve V8
Horsepower (hp @ rpm):	300 @ 5000
Torque(lb.-ft. @ rpm):	365 @ 3750
EPA fuel economy, city/hwy:	14/18 mpg
Transmission (Optional):	5-speed manual; 4-speed automatic; high-capacity 4-speed automatic
Wheelbase:	144.5 in.
Length/width/height:	229.8/78.9/75.6 in.
Track, f/r:	67.0/67.0 in.
Turning circle:	46.4 ft.
Seating capacity:	6
Head/hip/leg room, f:	40.9/66.5/41.3 in.
Head/hip/leg room, r:	39.6/NA/32.7 in.
Cargo volume:	N/A
Payload	1670 Lbs.
Suspension F:	independent, double wishbones with coil springs over shock absorbers
Suspension R:	live axle on leaf springs, outboard shock absorbers
Ground Clearance:	N/A
Curb weight:	5471 Lbs.
Towing capacity:	8300 Lbs.
Tires:	P255/70R17 all-terrain
Brakes, f/r:	disc/disc with ABS

Fuel capacity:

27.0 gal.

Unless otherwise indicated, specifications refer to test vehicle.

All prices are manufacturer's suggested retail prices (MSRP) effective as of 01/Aug/2005.
Prices do not include manufacturer's destination and delivery charges. N/A: Information not
available or not applicable.

Manufacturer Info Sources: 1-800-392-FORD - **www.ford.com**

Copyright © 1994-2006 New Car Test Drive, Inc.




where smart car buyers start®

"From Edmunds.com"

Consumer Ratings & Reviews: 2006 Ford F-150

Date Posted 01/01/2006	So far so good by tetsmmb Style: Lariat 4dr SuperCrew 4WD Styleside 5.5 ft. SB (5.4L 8cyl 4A)	Rating  9.1	Ratings Detail																		
<p>Review: I just picked up my new F150 and I love it! Perfect right out of the box. Good performance, comfortable and quiet. My kids love all the room in the back seat. Crew cab is the way to go.</p> <p>Favorite Features: Leather heated seats. Body style, interior style. Interior quality is outstanding.</p> <p>Suggested Improvements: Haven't had the truck long enough to know.</p>			<table border="1"> <tr><td>Performance</td><td>8.0</td></tr> <tr><td>Comfort</td><td>10.0</td></tr> <tr><td>Fuel Economy</td><td>6.0</td></tr> <tr><td>Fun-to-Drive</td><td>10.0</td></tr> <tr><td>Interior Design</td><td>10.0</td></tr> <tr><td>Exterior Design</td><td>9.0</td></tr> <tr><td>Build Quality</td><td>10.0</td></tr> <tr><td>Reliability</td><td>10.0</td></tr> <tr><td>Rating</td><td>9.1</td></tr> </table>	Performance	8.0	Comfort	10.0	Fuel Economy	6.0	Fun-to-Drive	10.0	Interior Design	10.0	Exterior Design	9.0	Build Quality	10.0	Reliability	10.0	Rating	9.1
Performance	8.0																				
Comfort	10.0																				
Fuel Economy	6.0																				
Fun-to-Drive	10.0																				
Interior Design	10.0																				
Exterior Design	9.0																				
Build Quality	10.0																				
Reliability	10.0																				
Rating	9.1																				
<p>Was this review helpful? <input type="radio"/> Yes <input type="radio"/> No <input type="button" value="Submit"/></p> <p>Let us know if this review is offensive. Back to top ▲</p>																					

Date Posted 01/17/2006	Back to Ford by tomt Style: Lariat 4dr SuperCrew 4WD Styleside 5.5 ft. SB (5.4L 8cyl 4A)	Rating  8.9	Ratings Detail																		
<p>Review: I've only had my new F150 for three weeks. Love this truck. I had my Chevy truck for 10 years before this, but no regrets for the change. The second day that I had the truck I took it to the mountains and used the 4WD in the snow. This truck is well balanced and handles great in the wet, dry or in the snow. The interior design is excellent, great quality materials. The pop out cup holders are the only thing that seem a bit weak. Power seems great, but you do have to be careful not to speed since the truck is so quiet. Love this truck.</p> <p>Favorite Features: Deep truck box is nice because with the tailgate down the bed length is almost 8' long. Excellent interior space.</p> <p>Suggested Improvements: The front bumper could be a bit stronger, I hope that I never hit anything.</p>			<table border="1"> <tr><td>Performance</td><td>8.0</td></tr> <tr><td>Comfort</td><td>10.0</td></tr> <tr><td>Fuel Economy</td><td>6.0</td></tr> <tr><td>Fun-to-Drive</td><td>9.0</td></tr> <tr><td>Interior Design</td><td>10.0</td></tr> <tr><td>Exterior Design</td><td>9.0</td></tr> <tr><td>Build Quality</td><td>9.0</td></tr> <tr><td>Reliability</td><td>10.0</td></tr> <tr><td>Rating</td><td>8.9</td></tr> </table>	Performance	8.0	Comfort	10.0	Fuel Economy	6.0	Fun-to-Drive	9.0	Interior Design	10.0	Exterior Design	9.0	Build Quality	9.0	Reliability	10.0	Rating	8.9
Performance	8.0																				
Comfort	10.0																				
Fuel Economy	6.0																				
Fun-to-Drive	9.0																				
Interior Design	10.0																				
Exterior Design	9.0																				
Build Quality	9.0																				
Reliability	10.0																				
Rating	8.9																				
<p>Was this review helpful? <input type="radio"/> Yes <input type="radio"/> No <input type="button" value="Submit"/></p> <p>Let us know if this review is offensive. Back to top ▲</p>																					

"Copyright Edmunds.com, Inc. All rights reserved. First published on www.edmunds.com and reprinted with permission. Edmunds and the Edmunds.com car logo are proprietary trademarks of Edmunds.com, Inc."

This CARFAX Vehicle History Report provided free of charge by:



Kendall Dodge Chrysler Jeep Ram
 13355 Sw 137th Ave
 Miami, FL 33186
 786-231-2155

SHOW ME THE CARFAX

CARFAX® Vehicle History Report™

An independent company established in 1986

US \$39.99

<p>Vehicle Information: 2006 FORD F150 VIN: 1FTRX12W16NB64069 4 DOOR EXTENDED CAB PICKUP 4.6L V8 FI REAR WHEEL DRIVE Standard Equipment Safety Options</p> <p>CARFAX Report Provided By: Kendall Dodge Chrysler Jeep Ram 13355 Sw 137th Ave Miami, FL 33186 786-231-2155 Visit Dealer Website Contact Dealer</p>	<table style="width: 100%; border-collapse: collapse;"> <tr> <td style="text-align: center; width: 30px;"></td> <td>No accident / damage reported to CARFAX</td> </tr> <tr> <td style="text-align: center;"></td> <td>2 Previous owners</td> </tr> <tr> <td style="text-align: center;"></td> <td>11 Service records available</td> </tr> <tr> <td style="text-align: center;"></td> <td>Personal vehicle</td> </tr> <tr> <td style="text-align: center;"></td> <td>105,964 Last reported odometer reading</td> </tr> <tr> <td style="text-align: center;"></td> <td>\$1,090 Above retail book value</td> </tr> </table>		No accident / damage reported to CARFAX		2 Previous owners		11 Service records available		Personal vehicle		105,964 Last reported odometer reading		\$1,090 Above retail book value	
	No accident / damage reported to CARFAX													
	2 Previous owners													
	11 Service records available													
	Personal vehicle													
	105,964 Last reported odometer reading													
	\$1,090 Above retail book value													

This CARFAX Vehicle History Report is based only on [information](#) supplied to CARFAX and available as of 1/16/15 at 1:32:02 PM (EST). Other information about this vehicle, including problems, may not have been reported to CARFAX. Use this report as one important tool, along with a vehicle inspection and test drive, to make a better decision about your next used car.

Price Calculator™

Adjust the value of this **2006 Ford F150** based on the information available in this report

<p>1) Retail Book Value</p> <div style="border: 1px solid gray; padding: 5px; display: flex; justify-content: space-between; align-items: center;"> \$ 0 </div> <p style="font-size: x-small; margin-top: 5px;">Enter retail book value here</p>	<p>2) CARFAX Price Adjustment™</p> <div style="display: flex; align-items: center; justify-content: center; font-size: 24px;"> + </div> <div style="display: flex; align-items: center; justify-content: center; font-size: 24px;"> + \$1,090 </div> <div style="display: flex; align-items: center; justify-content: center; font-size: 24px;"> = </div> <p style="font-size: x-small; margin-top: 5px;">Above retail book value</p>	<p>3) Adjusted Retail Value</p> <p style="font-size: x-small; margin-top: 5px;">Begin by entering the retail book value</p>
<p style="font-size: x-small; margin: 0;">Start by entering the retail book value from a pricing guide website.</p>	<div style="border: 1px solid gray; border-radius: 10px; padding: 10px; text-align: center; font-size: 24px; color: green;">\$</div> <p style="font-size: x-small; margin: 5px 0;">This vehicle is worth more than average, based on information in this report.</p>	<div style="border: 1px solid gray; border-radius: 10px; padding: 10px; text-align: center;"> <p style="font-size: x-small; margin: 0;">Compare adjusted retail value to seller's asking price when making your decision.</p> </div>


Ownership History	Owner 1	Owner 2
The number of owners is estimated		
Year purchased	2006	2010
Type of owner	Personal	Personal
Estimated length of ownership	4 years	4 yrs. 1 mo.

Owned in the following states/provinces	Florida	Florida
Estimated miles driven per year	14,175/yr	---
Last reported odometer reading	61,941	105,964

CARFAX Title History CARFAX guarantees the information in this section	Owner 1	Owner 2
Salvage Junk Rebuilt Fire Flood Hail Lemon	Guaranteed No Problem	Guaranteed No Problem
Not Actual Mileage Exceeds Mechanical Limits	Guaranteed No Problem	Guaranteed No Problem
GUARANTEED - None of these major title problems were reported by a state Department of Motor Vehicles (DMV). If you find that any of these title problems were reported by a DMV and not included in this report, CARFAX will buy this vehicle back. View Certificate		


CARFAX Additional History Not all accidents / issues are reported to CARFAX	Owner 1	Owner 2
Total Loss No total loss reported to CARFAX.	No Issues Reported	No Issues Reported
Structural Damage No structural damage reported to CARFAX.	No Issues Reported	No Issues Reported
Airbag Deployment No airbag deployment reported to CARFAX.	No Issues Reported	No Issues Reported
Odometer Check No indication of an odometer rollback.	No Issues Indicated	No Issues Indicated
Accident / Damage No accidents or damage reported to CARFAX.	No Issues Reported	No Issues Reported
Manufacturer Recall A current list of recalls is available at Ford Motor Company .	No Recalls Reported	No Recalls Reported
Basic Warranty Original warranty estimated to have expired.	Warranty Expired	Warranty Expired

[Tell us what you know about this vehicle](#)

CARFAX Detailed History		Glossary		
Owner 1 Purchased: 2006 Type: Personal Where: Florida Est. miles/year: 14,175/yr Est. length owned: 11/24/06 - 11/30/10 (4 years)	Date:	Mileage:	Source:	Comments:
	05/10/2006		NICB	Vehicle manufactured and shipped to original dealer
Low mileage! This owner drove less than the industry average of 15,000 miles per year. 	08/11/2006		Service Facility	Pre-delivery inspection completed
	09/29/2006		Service Facility	Bed liner installed Oil and filter changed Tires rotated
	11/06/2006		Service Facility	Vehicle serviced
	11/24/2006	5,939	Florida Motor Vehicle Dept.	Vehicle purchase reported

12/19/2006		Florida Motor Vehicle Dept. Homestead, FL Title #0097359394	Title issued or updated First owner reported Titled or registered as personal vehicle Loan or lien reported
09/05/2007		Florida Motor Vehicle Dept. Key Largo, FL Title #0097359394	Registration issued or renewed Titled or registered as personal vehicle Loan or lien reported Vehicle color noted as Red
02/04/2008		Service Facility	Vehicle serviced
10/03/2008		Florida Motor Vehicle Dept. Key Largo, FL Title #0097359394	Registration issued or renewed Titled or registered as personal vehicle Loan or lien reported Vehicle color noted as Red
01/16/2009	33,523	Armstrong Ford Of Homestead Homestead, FL 305-247-5112 armstrongfordofhomes tead.com	Body electrical system checked Interior trim checked Engine checked Oil and filter changed
02/23/2009	35,559	Armstrong Ford Of Homestead Homestead, FL 305-247-5112 armstrongfordofhomes tead.com	Engine checked
09/30/2009	45,540	Armstrong Ford Of Homestead Homestead, FL 305-247-5112 armstrongfordofhomes tead.com	Oil and filter changed Wiper(s) replaced
10/05/2009		Florida Motor Vehicle Dept. Key Largo, FL Title #0097359394	Registration issued or renewed Titled or registered as personal vehicle Loan or lien reported Vehicle color noted as Red
12/05/2009	48,662	Armstrong Ford Of Homestead Homestead, FL 305-247-5112 armstrongfordofhomes tead.com	Engine electrical system checked
04/01/2010	53,813	Armstrong Ford Of Homestead Homestead, FL 305-247-5112 armstrongfordofhomes tead.com	Oil and filter changed Suspension serviced
10/06/2010		Florida Motor Vehicle Dept. Key Largo, FL Title #0097359394	Registration issued or renewed Titled or registered as personal vehicle Loan or lien reported Vehicle color noted as Red
11/05/2010	61,941	Armstrong Ford Of Homestead Homestead, FL 305-247-5112 armstrongfordofhomes tead.com	Drivability/performance checked

11/26/2010	Florida Motor Vehicle Dept. Homestead, FL Title #0097359394	Registration issued or renewed Titled or registered as personal vehicle Vehicle color noted as Red
------------	--	---

Owner 2
 Purchased: 2010
 Type: Personal
 Where: Florida
 Est. length owned: 11/30/10 - 1/7/15 (4 yrs. 1 mo.)

Date:	Mileage:	Source:	Comments:
11/30/2010		Florida Motor Vehicle Dept.	Vehicle purchase reported
12/07/2010		Florida Motor Vehicle Dept. Homestead, FL Title #0097359394	Title issued or updated Title or registration issued New owner reported Titled or registered as personal vehicle Loan or lien reported Vehicle color noted as Red
03/17/2012		Florida Motor Vehicle Dept. Miami, FL Title #0097359394	Registration issued or renewed Titled or registered as personal vehicle Loan or lien reported Registration updated when owner moved the vehicle to a new location Vehicle color noted as Red
03/22/2013		Florida Motor Vehicle Dept. Miami, FL Title #0097359394	Registration issued or renewed Titled or registered as personal vehicle Loan or lien reported Vehicle color noted as Red
03/04/2014		Florida Motor Vehicle Dept. Miami, FL Title #0097359394	Registration issued or renewed Titled or registered as personal vehicle Loan or lien reported Registration updated when owner moved the vehicle to a new location Vehicle color noted as Red
01/07/2015	105,959	Kendall Dodge Chrysler Jeep Ram Miami, FL 786-231-2155 kendalldodgechrysler jeepram.com	Vehicle offered for sale
01/13/2015	105,964	Kendall Dodge Chrysler Jeep Ram Miami, FL 786-231-2155 kendalldodgechrysler jeepram.com	Tires rotated Air filter replaced
01/14/2015		Kendall Dodge Chrysler Jeep Ram Miami, FL 786-231-2155 kendalldodgechrysler jeepram.com	Vehicle offered for sale

[Print this CARFAX Report and take it to your pre-purchase inspection](#)

[Tell us what you know about this vehicle](#)

Have Questions? Please visit our Help Center at www.carfax.com.



Glossary

[View Full Glossary](#)

CARFAX Price Adjustment™

Accidents, service records, number of owners and many other history factors can affect a vehicle's value. The CARFAX Price Adjustment is a tool that analyzes millions of used car transactions to measure how the combination of all the information reported to CARFAX affects the value of a particular vehicle. The vehicle's retail book value plus the CARFAX Price Adjustment will give you a more accurate measure of the vehicle's value. Use this tool, along with a vehicle inspection and test drive, to make a better decision about your next used car.

First Owner

When the first owner(s) obtains a title from a Department of Motor Vehicles as proof of ownership.

Ford or Lincoln Mercury Recall

The Ford Motor Company provides Carfax with recall information regarding safety, compliance and emissions programs announced since 2000 for a specific vehicle. For complete information regarding programs or concerns about this vehicle, please contact a local [Ford or Lincoln Mercury Dealer](#).

New Owner Reported

When a vehicle is sold to a new owner, the Title must be transferred to the new owner(s) at a Department of Motor Vehicles.

Ownership History

CARFAX defines an owner as an individual or business that possesses and uses a vehicle. Not all title transactions represent changes in ownership. To provide estimated number of owners, CARFAX proprietary technology analyzes all the events in a vehicle history. Estimated ownership is available for vehicles manufactured after 1991 and titled solely in the US including Puerto Rico. Dealers sometimes opt to take ownership of a vehicle and are required to in the following states: Maine, Massachusetts, New Jersey, Ohio, Oklahoma, Pennsylvania and South Dakota. Please consider this as you review a vehicle's estimated ownership history.

Title Issued

A state issues a title to provide a vehicle owner with proof of ownership. Each title has a unique number. Each title or registration record on a CARFAX report does not necessarily indicate a change in ownership. In Canada, a registration and bill of sale are used as proof of ownership.

Follow Us:  facebook.com/CARFAX  [@CarfaxReports](https://twitter.com/CarfaxReports)  [CARFAX on Google+](#)

CARFAX DEPENDS ON ITS SOURCES FOR THE ACCURACY AND RELIABILITY OF ITS INFORMATION. THEREFORE, NO RESPONSIBILITY IS ASSUMED BY CARFAX OR ITS AGENTS FOR ERRORS OR OMISSIONS IN THIS REPORT. CARFAX FURTHER EXPRESSLY DISCLAIMS ALL WARRANTIES, EXPRESS OR IMPLIED, INCLUDING ANY IMPLIED WARRANTIES OF MERCHANTABILITY OR FITNESS FOR A PARTICULAR PURPOSE. CARFAX® SYSTEMATIC RETRIEVAL OF THE CONTENT OR OTHER DATA FROM THIS SITE TO CREATE OR COMPILE, DIRECTLY OR INDIRECTLY, IN WHOLE OR IN PART, A COLLECTION, COMPILATION, DATABASE OR DIRECTORY WITHOUT THE EXPRESS WRITTEN PERMISSION OF CARFAX IS STRICTLY PROHIBITED. THE CARFAX VEHICLE HISTORY REPORT IS SUBJECT TO THE [CARFAX.COM TERMS OF USE](#).

© 2015 CARFAX, Inc., a unit of IHS Inc. All rights reserved.

Covered by United States Patent Nos. 7,113,853; 7,778,841; 7,596,512, 8,600,823; 8,595,079; 8,606,648; 7,505,838.

1/16/15 1:32:02 PM (EST)



Dear Customer

Kendall Dodge Chrysler Jeep Ram would like to take this opportunity to thank you for your continued loyalty. We would like to invite you to become a member of the VIP Rewards Club.

MEMBERSHIP INCLUDES:

- 3% Dealer Cash Back on Customer Pay Service Purchases
- \$50.00 Credit applied to you VIP card when you purchase a new or used vehicle
- Free Wi-Fi Lounge
- Complimentary 26 Point Inspection
- 24 Hour Roadside Service (new vehicle purchase and only for first 2 yrs)
- Complimentary Shuttle Service
- Extended Hours for Your Convenience including Saturday and Sunday Service Hours
- Free Body Shop Estimates
- Family locally owned and operated
- All services competitively priced
- Factory trained technicians
- Largest Original Equipment parts inventory on premise
- Automatic email statements
- Personal Website for tracking your records
- Complimentary iPhone app for an "On the go" relationship with us

You can redeem your dollars earned towards Parts, Service, New and/or Pre-owned vehicle purchases. Enclosed you will find your new Kendall Dodge Chrysler Jeep Ram VIP Loyalty key tags. On the back of the key tags you will find your Kendall Dodge Chrysler Jeep Ram VIP member number that matches your personal account. Please accept this invitation to your new program, as it is a way to reward our loyal customers. We have issued one Kendall Dodge Chrysler Jeep Ram VIP account per household. That may be used when servicing any vehicle you own. These dollars offer you future savings only at Kendall Dodge Chrysler Jeep Ram. Directions on how to activate your card and account are below:

*YOUR CARD WILL NOT BE ACTIVE UNTIL YOU COME IN FOR YOU NEXT SERVICE VISIT. IF YOU WOULD LIKE TO ACTIVATE SOONER PLEASE COME BY AND WE WILL BE HAPPY TO GET YOU STARTED.

Directions on Activating your Kendall Dodge Chrysler Jeep Ram VIP Account

First go to www.customerloyaltyrewards.net

Customer Loyalty ID: (enter the number on the back of your card)

Password: (admin) this is the default password to activate your account.

You are automatically set up to receive email point/dollar statements with additional promotions from time to time, if we have a good email address for you. If we do not have an updated email address I would recommend you to into your website and update your address. Thank you again for your continued loyalty and business.

Sincerely
Hector Collado
General Manager

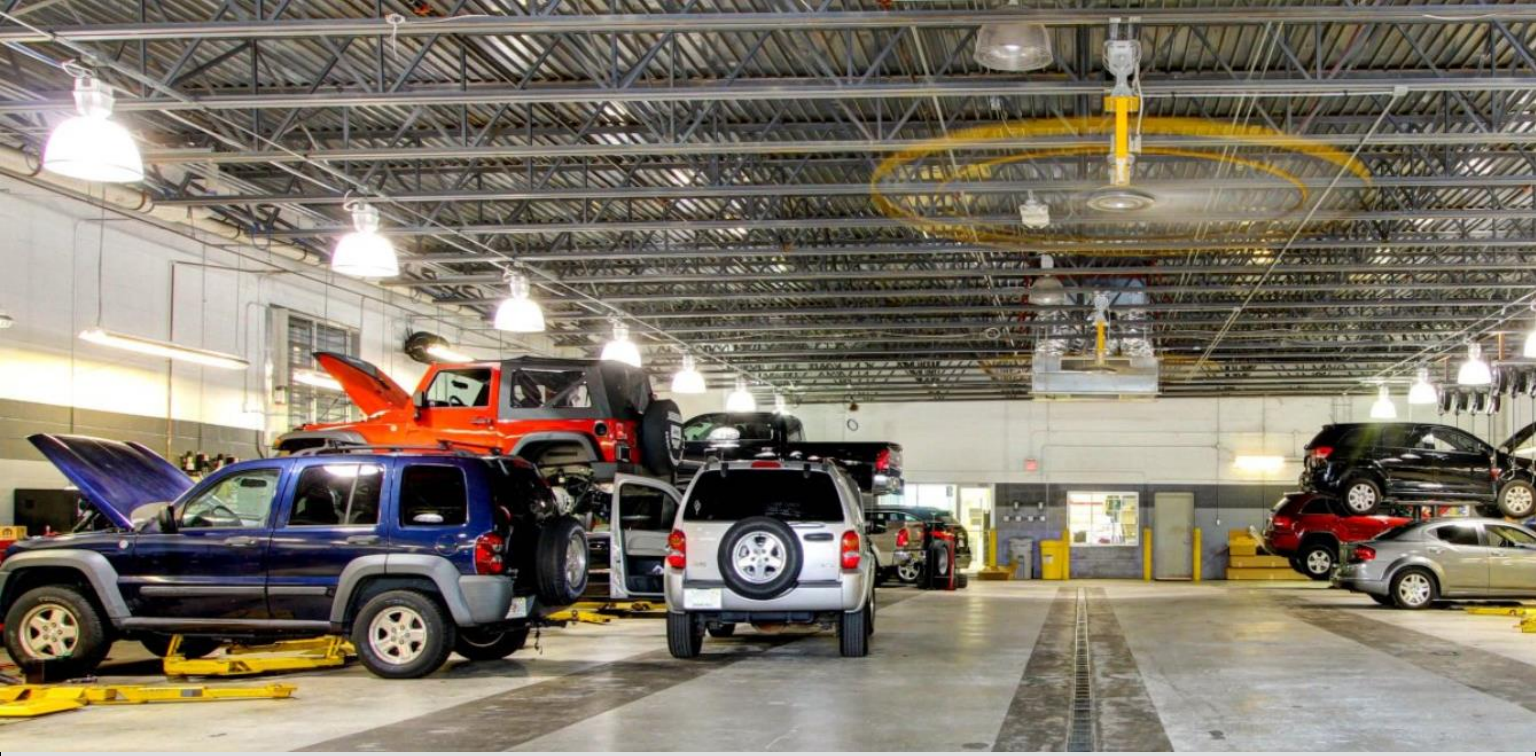


Welcome to Kendall Dodge Chrysler Jeep Ram

Kendall Dodge Chrysler Jeep Ram is one of the leading car dealers in Florida. While we are located in Kendall, FL, we not only offer our services to those living in Kendall, but to residents in surrounding cities, such as Miami, as well. Every single one of our sales team staff members has the proper training and knowledge to provide you with all the information you need on the countless makes and models in our inventory.

We have a strong commitment to your satisfaction which is one of the many things that separates us from other dealerships in the Miami area. One of the benefits of choosing Kendall Dodge Chrysler Jeep Ram as your exclusive car dealer is that our website makes it easy to find everything you need. We know that you're busy, so our online services save you from having to spend as much time at our showroom. It's just another way that we make buying a car easier for our valued customers.

Over the years, we have found that the majority of our customers in the market for a used car are hunting for two things: high fuel economy and a low price. In response, we have made it easy to find both. In the Used Cars drop-down menu, we provide the option to filter out the cars in our inventory that get more than 30 MPG, as well as the cars that are available for less than \$10,000. Even the vehicles in our new car inventory can be sorted by both price and fuel economy. Trust us—finding a new or used car near Miami, FL, has never been this easy.



Kendall DCJR's Quality Service

Here at Kendall Dodge Chrysler Jeep Ram, we are committed to more than just selling cars. Our quality services stretches to all parts of our dealership, including our service department. As a certified dealership, all Dodge, Chrysler, Jeep and Ram vehicles are serviced by technicians who are trained specifically to deal with them. Also, all parts beyond repair are replaced with genuine parts to ensure that your vehicle runs just as smoothly as it did the day that it rolled off the assembly line. Schedule an appointment online and experience some of the most quality auto repair service in Kendall, FL.

Kendall DCJR • 13355 SW 137th Avenue • Miami, FL 33186

Sales: 786-231-2120

Service: 786-231-2150

Parts: 786-231-2125



Don't Take Our Word For It... See What Our Customers have To Say!

Last Thursday I came to Kendall Dodge for service on my 2011 Dodge Charger. I was approached by Chris Johnson in sales to see if I wanted to trade up and buy a new vehicle. Chris handled himself in such a professional manner and he was very knowledgeable about the product. I was shown various models and years and he made sure I got the vehicle I wanted and made my buying experience enjoyable. I would be remiss if I didn't Adrian in Finance who was also very pleasant to deal with and in explaining all of my financing options. I wouldn't hesitate to recommend Chris and Adrian and this dealership

- Merrill Shupnick

The salesman spent a lot of time going over features available on the car and helping get a good price for my trade. He was always courteous and even though it was a busy day he gave us the attention we needed to make a good deal. I felt he was very helpful and have a good feeling about the dealership. I met the general sales manager who went out of his way to meet us and make sure we were being taken good care of. The finance manager was a pleasure to work with.

- Bay Pilot

This dealer ship (Michael/Michael) went above and beyond to meet my needs and exceed my expectations. One of the best dealerships I have ever worked with. They worked diligently with me while on vacation, communicating with me at my leisure, and not making it a hard sell.

- JT

The sales team including Diego were very professional. We worked out a deal whereby it was a win win situation for me and the dealer. There was no high pressure sales tactictis and the experience was actually very pleasant.

- J Balboa



Whether you need routine maintenance, a quick oil change or something more serious like an engine repair, we handle all problems big and small at Kendall Dodge Chrysler Jeep Ram. It's why so many Florida residents have made us their number one source for auto repair service in Kendall, FL.

Many residents believe that they can't bring their car into be serviced because they didn't buy it at the dealership, or because it's not a Dodge, Chrysler, Jeep or Ram. That couldn't be further from the truth. Here at Kendall DCJR, we service any and all vehicles, regardless of year, make or model.

All you have to do is schedule a service appointment by calling the dealership or by filling out the online scheduling form. Simply click the scheduling button below to get started.

First Four (4) Oil Changes Free

Is Presented to _____ In Appreciation from Kendall DCJR
Service For purchasing your pre-owned vehicle _____



Schedule Appointment Date: _____

Expiration Date: _____

VIN: _____

Authorization: _____

Disclaimer: Cannot be combined with any other special offers



[Return to Pre-Owned Inventory](#)

[Online Credit Approval](#)

[Calculate Your Trade](#)

[Calculate Your Payments](#)

[Contact Us/Hours & Directions](#)

[Our Dealership](#)