

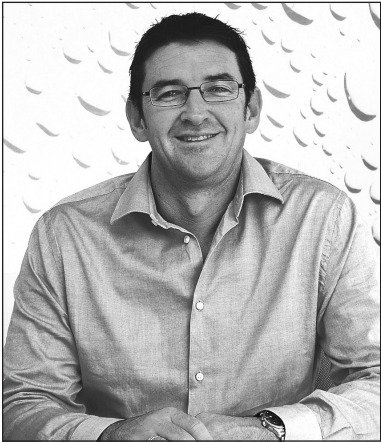


Sprayer Specifications Warranty & Pre-Delivery

BROADACRE



Welcome



Sean Mulvaney, General Manager of Croplands

Congratulations on the purchase of your new Croplands sprayer.

Croplands have been in the business of building and selling spraying equipment since 1972. For over 40 years we have been supplying sprayers to farmers, contractors, growers and all our customers involved in growing crops and in the control of pests and diseases.

Croplands is a wholly owned subsidiary of Nufarm Ltd, the largest supplier of crop protection chemicals in Australasia, and one of the fastest growing global suppliers world-wide.

At Croplands, we pride ourselves on our commitment to supplying machinery that is at the forefront of the industry's needs. We believe we can back up our products and through constant research and development, bring to you the best equipment you can find.

We welcome any feedback from you about our equipment.

On this page you will find our contact details, and locations where our staff can be reached during business hours.

After hours, you can e-mail us and expect a reply the following morning.

Please read this manual in its entirety before you operate your sprayer. This will ensure you have a trouble-free start up.

We trust you will get years of good use from your Croplands Sprayer.

Yours sincerely

Sean Mulvaney
General Manager

Contact details:

AUSTRALIA

Croplands Equipment Pty Ltd
ACN 006 450 184
PO Box 2441, Dry Creek
50 Cavan Road, Dry Creek
S.A. 5094
Australia

FreePhone: 1800 999 162

FreeFax: 1800 623 778

e-mail: sales@croplands.com.au

website: www.croplands.com.au

NEW ZEALAND

Croplands Equipment Ltd
PO Box 2004,
Stotford Lodge, Hastings 4120
Location:
1422 Omaha Road,
Hastings 4120, New Zealand

FreePhone: 0800 106 898

FreeFax: 0800 117 711

e-mail: sales@croplands.co.nz

website: www.croplands.co.nz

Sprayer Specifications & Factory Fitted Options

IMPORTANT! Please keep this unique Serial Number & Sprayer Specification Sheet for future reference.



Dealer Copy

Remove this page and store it with the "yellow":

- Predelivery Check List page
and
- Warranty Registration page.

"Please see your Croplands Equipment dealer for provision of all Warranty Services"

Croplands Customer Service

Australia

Freecall: **1800 999 162**

Freefax: **1800 623 778**

sales@croplands.com.au

www.croplands.com.au

Croplands Customer Service

New Zealand

Freecall: **0800 106 898**

Freefax: **0800 117 711**

sales@croplands.co.nz

www.croplands.co.nz

Note: One Operators Manual is supplied with each sprayer and does not include detailed parts information.

Parts information is provided online & must be sourced from the Croplands' web site.

Sprayer Specifications & Factory Fitted Options

IMPORTANT! Please keep this unique Serial Number & Sprayer Specification Sheet for future reference.



Owner Copy

DO NOT REMOVE this page.

"Please see your Croplands Equipment dealer for provision of all Warranty Services"

Croplands Customer Service

Australia

Freecall: **1800 999 162**

Freefax: **1800 623 778**

sales@croplands.com.au

www.croplands.com.au

Croplands Customer Service

New Zealand

Freecall: **0800 106 898**

Freefax: **0800 117 711**

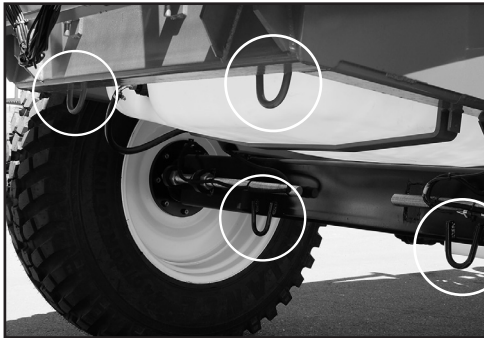
sales@croplands.co.nz

www.croplands.co.nz

Note: One Operators Manual is supplied with each sprayer and does not include detailed parts information.

Parts information is provided online & must be sourced from the Croplands' web site.

Transport & Product ID



Use the tie-down points provided when transporting.

Transport

See Operator Manual for sprayer size, weights and towing speeds.

Always use the tie-down points when transporting.

Where applicable, all controllers, manuals, wiring looms, etc, are supplied in a separate, sturdy, weather resistant transport box.

A transport box.



GP-WARB-A



Bravo 400S Controller.

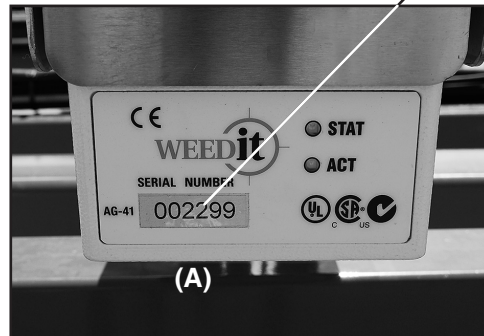
Product Identification

Always use the serial number of the Sprayer when requesting service information or when ordering parts.

Early or later models (identification made by serial number) may use different parts, or it may be necessary to use a different procedure for specific service operations.

WEEDit Unit Serial Numbers

Each WEEDit unit has a Serial Number located on the back of the unit (A).



(A)



Sprayer Serial Number

Sprayer Serial Number Plate

The Sprayer Serial Number Plate is located on the chassis above the hitch adjustment (B).

This plate shows name of manufacturer, serial number, product code and date of manufacture.

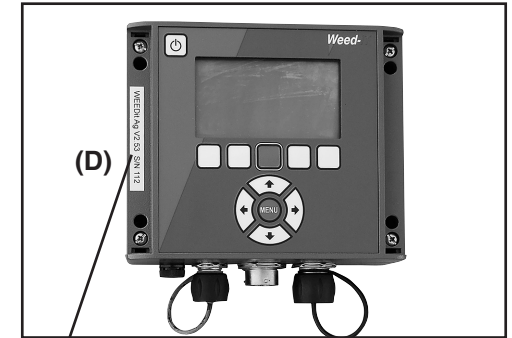
AR Pump Serial Number

The AR Pump Serial Number Plate is located on the pump (C).

This plate shows name of manufacturer, serial number, type of pump, year of manufacture, maximum flow rate and maximum working pressure of the pump.



(C)



(D)

WEEDit Controller Serial Number.

Controller Serial Number(s)

Controller serial numbers are generally located at the:

- Rear (eg, Bravo 180 [X], HV4000 & MT3405 [not shown]),
- or
- Side (eg, WEEDit Controller [D]).

Safety is the Operator's Responsibility

Croplands Sprayers are designed to meet the most demanding farming conditions, where large areas, uneven terrain, and weather-controlled deadlines set the toughest challenges.

These Sprayers are capable of spraying a wide range of pesticides and fungicides and the operator must be aware of the hazards associated with the Sprayer operation.

The dealer explains the capabilities, application and restrictions of the Sprayer.

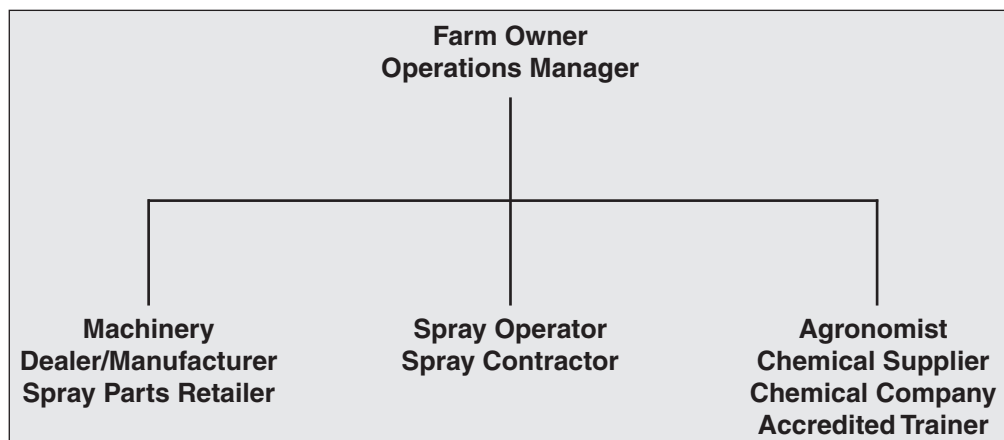
The dealer demonstrates the safe operation of the Sprayer according to Croplands instruction material, which is also available to operator.

The dealer can also identify unsafe modifications or use of unapproved attachments.

The following publications provide information on the safe use and maintenance of the Sprayer and attachments:

- The Operator's Manual delivered with the Sprayer gives routine maintenance and service procedures. It is a part of the Sprayer and must stay with the machine when it is sold.
- Replacement Operator's Manuals can be ordered from your Croplands dealer.
- Each Sprayer has machine signs (decals) which instruct on the safe operation and care. The signs and their locations are shown in the Operator's Manual.

Replacement signs are available from your Croplands dealer.



Safe Operation Needs a Qualified Operator

A Qualified Operator Must Do the Following:

1 Understand the Written Instructions, Rules & Regulations

- The written instructions from Croplands are included in the Sprayer Operation & Maintenance Manual and on machine decals.
- Check the rules and regulations at your location. The rules may include any Federal and State safety requirements for the chemical applicator.

2 Have Training with Actual Operation

- Operator training must consist of a demonstration & verbal instruction. This training is given by your dealer as part of the (pre) delivery process.
- The new operator must start in an area without bystanders and use all the controls until they can operate the Sprayer safely in all conditions of the work area.
- This training must be done with **water only** (no chemicals).

3 Know The Work Conditions

- The operator must know any prohibited uses or work areas. They need to know about excessive slopes and rough terrain.
- Wear protective clothing as recommended by the chemical manufacturer. Always wear safety goggles and gloves while maintaining or servicing the sprayer.
- For an operator to be qualified, they must not use drugs or alcoholic drinks which impair alertness or coordination while operating machinery.

An operator who is taking prescription drugs must get medical advice to determine if they can safely operate a machine.

NOTE

There are accredited training programmes for spray application in each state. We recommend all operators have accredited training.

Warranty Policy

Warranty Policy

Croplands Equipment Pty Ltd (trading as Croplands) warrants to its authorised Dealer, who in turn, warrants to the original purchaser (Owner) that each new Croplands' sprayer, part or accessory will be free from proven defects in material and workmanship for twelve (12) months from the date of delivery to the first Owner according to the conditions outlined. This warranty does not cover damages resulting from abuse, accidents, alterations, normal wear or failure to maintain or use the Croplands product with due care.

During the warranty period, the authorised Croplands Dealer shall repair or replace, at Croplands option, without charge for parts and labour any part of the Croplands product, which fails because of defects in material or workmanship. The Owner must provide the authorised Dealer with prompt written notice of the defect (within 14 days of its occurrence), and allow reasonable time for replacement or repair. Repair may, at Croplands option, include the replacement of parts with functionally equivalent reconditioned or new parts. Replacement parts will be warranted for the balance of the original warranty period or for ninety (90) days, whichever is longer. Croplands (at its option) may request failed parts to be returned to the factory. Any travel time of a service technician and/or transportation of the Croplands product to the authorised servicing Dealer for warranty work are the responsibility of the Owner.

EXCLUSIVE EFFECT OF WARRANTY AND LIMITATION OF LIABILITY THIS WARRANTY IS IN LIEU OF ALL WARRANTIES OF MERCHANTABILITY, FITNESS FOR A PURPOSE OR OTHER REPRESENTATIONS, WARRANTIES OR CONDITIONS, EXPRESSED OR IMPLIED. The remedies of the Owner set forth herein are exclusive. CROPLANDS neither assumes nor authorises any person to assume for it any other obligation or liability in connection with the sale of covered machines. Correction of defects, in the manner and for applicable period of time provided above, shall constitute fulfillment of all responsibilities of CROPLANDS to the Owner, and CROPLANDS shall not be liable for negligence under contract or in any manner with respect to such machines. IN NO EVENT SHALL THE OWNER BE ENTITLED TO RECOVER FOR INCIDENTAL, SPECIAL OR CONSEQUENTIAL DAMAGES SUCH AS BUT NOT LIMITED TO, LOSS OF CROPS, LOSS OF PROFITS OR REVENUE, OTHER COMMERCIAL LOSSES, INCONVENIENCE OR COST OF RENTAL OR REPLACEMENT EQUIPMENT.

Conditions of Warranty

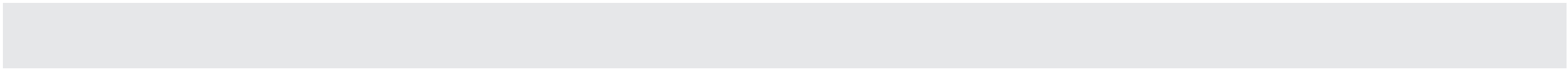
1. The warranty is not transferable.
2. The Warranty Registration Form must be returned to Croplands by the Owner Operator within 14 days of taking delivery of the unit. Only when warranty registration is completed and returned, can Croplands fulfill all warranty obligations.
3. **Schedule of components and conditions not covered by warranty are:**

Abuse Failure resulting from neglect, such as improper operation, lack of required maintenance or continued use of a sprayer after the discovery of a defect which results in greater damage to the unit.

Environmental Conditions and Application Deteriorated or failed components such as: diaphragms, O-rings, hoses, seals, electrical wiring and connections damaged by corrosive chemicals, dirt and sand, excessive heat or moisture. Owners should ensure the type and strength of chemicals used in the sprayer are compatible with the design of the unit.

Warranty determination for these types of failures will be made by Croplands only after inspection of failed components. In most instances these will incur inspection charges and cost of replacement parts.

Normal Wear	Normal wear and consumable items such as: oils and lubricants, diaphragms, filter elements, flowmeters, clutches, bearings, fan belts, drive belts, pivot pins, paint, light bulbs and nozzles are considered to be normal wear items and are not warranted.
Maintenance	Component failure caused by not performing scheduled maintenance service such as: oils, grease, failure to clean tanks, pumps, filters, spray lines, nozzles or any other blocked components. Not tightening or replacing loose or missing bolts, nuts, fittings, shields and covers.
Damage	Damages or machine failure caused by carelessness or accidental damage, improper operation, excessive speed during travel and operation, inappropriate transportation or storage of the sprayer or attachment.
Power Source	Failures due to faulty or inadequate electrical sources of power. Owners who use their own 12 volt power source must make sure that it is suitable for operating the spraying equipment.
Alterations	Any unauthorised alteration, modification, attachments or unauthorised repairs to the Croplands sprayer or attachments. Written approval must be obtained from Croplands for any such items to maintain warranty.
Removal & Installation	The time taken to remove and re-install a warranted part or component into other brands of sprayers will not be covered by Croplands warranty. Only parts and labour directly attributable to the repair of the Croplands unit is covered.
Clean-up Time	Croplands do not pay for cleaning the sprayer, parts, accessories or work area before or after the warranty repair. Clean-up time is affected primarily by the application or conditions in which the sprayer is operated and maintained. Since clean-up time can be so variable, cleaning time should be considered a customer expense.
Transportation	Warranty does not cover transportation or insurance costs for sprayers or other equipment needing repair or replacement of warranted components. Nor does it cover any freight or insurance costs in obtaining new parts or returning old parts to Croplands for inspection purposes.
Costs	Warranty does not cover time required to diagnose a warranty problem. Diagnostic time is affected greatly by the training and expertise of the technician employed to do the job. With proper training of service personnel, diagnostic time should be at a minimum.
Diagnostic Time	Croplands expects that Dealers will assign a well trained and proficient technician to handle any warranty repairs. Since Croplands is not in control of either of these responsibilities, we elect not to cover diagnostic time.
Non-Genuine Parts	Use of parts other than Croplands parts for repair of warranted parts will automatically negate any warranty. Warranted components must be replaced with genuine Croplands repair parts.
Unauthorised Repairs	Repairs by an unauthorised agent will automatically forfeit any warranty. An authorised Croplands Dealer must carry out warranty repairs.



The Pre-Delivery Check List **must be completed by the Dealer & signed by both the Dealer and the Owner**, and the white copy returned by the Dealer to Croplands.

Tick each box to affirm completion ✓

- 1 Operator's Manuals Supplied:**
 - Sprayer Operators Manual
 - Auto Sprayer Controller Manual(s)
- 2 Trailer**
 - Undamaged
 - Hitch height adjusted
 - Hitch Jack lubricated
 - Axle adjustment bolts tight (if applicable)
 - Axle nut adjustment, split pin in place
 - Check mudguards
 - Check paint
- 3 Wheel Hubs:**
 - Greased
 - Bearings adjusted
 - Split pin and dust caps in place
 - Wheel nuts tight
 - Check tyre pressure
- 4 Spray Tank**
 - Undamaged
 - Agitator adjusted correctly
 - Check lid opens & seals shut correctly
 - Basket strainer in place
- 5 Check All Tank Fittings Are Sealed**
 - Agitators
 - Tap & sump outlets
 - Tank rinse nozzle
- 6 Boom & Fold**
 - Undamaged
 - Check height adjustment
 - Check boom mounting bolts tight
 - Unfold the boom, and
 - Align wing sections
 - Align wing extensions
 - Adjust wing locks
 - Check Ramsey pump pressure
 - Check nozzle spacings
 - Check nozzle mountings tight
 - Grease boom hinge points
 - Fold boom to transport position & check hoses do not kink or jam on folding

Tick each box to affirm completion ✓

- 7 Power Drive**
 - (a) PTO**
 - Check quick release pins operate easily and lock into place
 - Check universal joints work correctly
 - Adjust PTO length to suit tractor
 - Grease telescopic sliding shaft
 - Grease universal joints
 - Ensure safety shields are in place
 - Ensure safety chains are securely fitted ..
 - (b) Hydraulic Pump Drive & Filling Pump (if fitted)**
 - Check pressure & return lines are identified for Hydraulic pump drive
 - Check revs set correctly for hydraulic pump drive
 - Check liquid pump operates correctly
 - Check filling pump operation & controls ...
- 8 Pump**
 - Check mountings
 - Check oil level
 - Check air chamber pressure - 70-100kPa (10-15 psi)
 - Check operation
- 9 Suction Lines**
 - Undamaged
 - Hoses - no kinks or restrictions
 - All joins sealed (no air leaks)
 - Filter clean & sealed
- 10 Pressure Lines**
 - Undamaged
 - Hoses - no kinks or restrictions
 - All hoses sealed (no leakages)
 - Filter clean & sealed
- 11 Nozzles**
 - Undamaged
 - Nozzle filters clean
 - Nozzles correct type throughout
 - Nozzle caps sealed (no leakages)
 - Non-drip diaphragms working
 - Check fenceline spray operation

Tick each box to affirm completion ✓

- 12 Agitation**
 - Check both agitators work
 - Check hoses are properly sealed
- 13 Bottom-Fill (Spray/Flush Tanks)**
 - Check bottom-fill operates
 - Filter clean & sealed
 - Check hoses properly sealed
 - Check caps & plugs in place
- 14 Chem-E-Flush**
 - Check unit is undamaged
 - Check hoses/fittings seal correctly
 - Check Chem-E-Flush operation
- 15 Chemical Probe (if ordered)**
 - Undamaged
 - Check fittings seal correctly
 - Check probe operation
 - Check caps & plugs in place
- 16 Automatic Controller(s)**
 - Check installation
 - Check battery connection
 - Calibrate controller(s)
 - Fully check controller operation
- 17 Fresh Water & Flushing Tanks**
 - Undamaged
 - Check fittings
 - Check operation
- 18 Main Control & Drain Valves**
 - Check there are no leaks
 - Check all valves open & close easily
- 19 WEEDit Controller**
 - Check fittings & connectors
 - Check battery connections
 - Check Controller operation
 - Calibrate the Controller
 - Other ?
- 20 Air-Ride Axle**
 - Check air reservoir pressure
 - Set air suspension ride height
- 21 GPS Guidance**
 - Check operation

Tick each box to affirm completion ✓

- 22 Enviro-Transfer Kit**
 - Check operation
- 23 Decals**
 - Check all decals are in place
- 24 Other**
 -
 -

Tick appropriate box

OWNER: Farmer Contractor

Owner's Name: (Print)

Address:

.....

..... Postcode:

Phone:

Mobile:

Email:

Signature of Owner

Date:

DEALER:

Dealership Name: (Print)

.....

..... Postcode:

Email:

Signature of Dealer Representative

Date:

Machine Serial #:

Warranty Registration: The Owner acknowledges that the Owner has read & understood all terms & conditions of the Croplands' warranty policy contained in this manual. The warranty policy will commence upon installation. This Warranty Registration **must be completed & signed by both the Owner & the Dealer**, & the white copy returned by the Dealer to Croplands.

Model:
 Size:
 Serial No:
 Purchase Date:
 Pre-Delivery Completion Date:

OWNER:
 Owner's Name: (Print)
 Address:

 Postcode:
 Phone: Mobile:
 Email:
 Signature of Owner:

 Date:

DEALER:
 Dealership Name: (Print)
 Address:

 Postcode:
 Phone: Mobile:
 Email:
 Signature of Dealer Representative:

 Date:

IMPORTANT:

By executing this Warranty Registration:

1 The Owner:

- (a) Agrees that the Owner will read the Operator's Manual before using the Sprayer; will follow all procedures in the operator's manual for the use of the Sprayer, and will exercise due care in the use of the Sprayer;
- (b) Agrees that Croplands' liability for any loss or damage suffered by the Owner in connection with the Owner's use of the Sprayer is limited to the cost of repair or replacement of the Sprayer;
- (c) Agrees that the Owner will bear any loss the Owner suffers as a consequence of any failure by the Owner to comply with 1(a) above;
- (d) Acknowledges that the owner is trained and is fully responsible for the safe and correct operation of the Sprayer; and
- (e) Agrees that the Owner will fully train any person who might be required to operate the Sprayer as to how to operate the Sprayer in a safe and proper manner.

2 The Dealer undertakes that the Dealership has met the obligations of Sprayer pre-delivery, installation, service and warranty start up.

Owner's Machinery Register: *(This information will assist us in providing first class back-up and parts service)*

- 1 Type of purchaser (please tick): Owner/Farmer Share Farmer Contractor
- 2 Major activities (please number in order of importance):

<input type="checkbox"/> Sheep	<input type="checkbox"/> Nuts	<input type="checkbox"/> Nurseries	<input type="checkbox"/> Vineyards
<input type="checkbox"/> Beef	<input type="checkbox"/> Vegetables	<input type="checkbox"/> Fruit Trees	<input type="checkbox"/> Council/Govt
<input type="checkbox"/> Cereal Grain	<input type="checkbox"/> Flowers	<input type="checkbox"/> Parks & Lanes	<input type="checkbox"/> Other
<input type="checkbox"/> Cotton	<input type="checkbox"/> Dairy	<input type="checkbox"/> Sugar Cane	<input type="checkbox"/>
- 3 What is the size of your holding (hectares)?
- 4 What are your reasons for purchasing the Croplands Sprayer?

5 What other Croplands' machinery do you currently use?

Serial No.	Implement Type	Size	Age	Comments
.....
.....
.....
.....
.....

