

SIZING CHART INDEX

Click on a brand to view the size chart



knixwear™





HORSEWARE[®]

IRELAND

ORDER SIZE		XXS	XS	S	M	L	XL	XXL
ADULTS SIZES	LADIES SIZING FOR JACKETS, SHIRTS AND TOPS							
UK		6	8	10	12	14	16	18
EUROPEAN		34	36	38	40	42	44	46
USA		2	4	6	8	10	12	14
BUST (INCHES)		32 1/2	33	35	37	39	41	43
BUST (CM)		76-80	81-85	86-90	91-95	96-100	101-105	106-110
WAIST (CM)		61-65	66-70	71-75	76-80	81-85	86-90	91-95
HIP (CM)		83-87	88-92	93-97	98-102	103-108	109-113	114-118
	CLASSIC SIZING FOR JACKETS, SHIRTS AND TOPS							
CHEST (INCHES)		33	35	37	39	41	43	45
CHEST (CM)		81-85	86-90	91-95	96-100	101-105	106-110	111-115
	LADIES LEGWEAR							
SIZE IN INCHES		24"	26"	28"	30"	32"	34"	36"
WAIST (CM)		61-65	66-70	71-75	76-80	81-85	86-90	91-95
HIP (CM)		83-87	88-92	93-97	98-102	103-108	109-113	114-118
R= APPX.168CM TALL								
	MENS LEGWEAR							
SIZE IN INCHES			28	30	32	34	36	38
WAIST (CM)			74-78	79-83	84-88	89-93	94-98	99-103
HIP (CM)			87-91	92-96	97-101	102-106	107-111	112-116
R= APPX. 180CM TALL								
CHILDRENS SIZES								
ORDER SIZE		3-4 YR	5-6 YR	7-8 YR	9-10 YR	11-12 YR	13-14 YR	15-16 YR
* AVERAGE HEIGHT CM		98/104	110/116	122/128	134/140	146/152	158/164	164+
* RECOMMENDED KIDS LEGWEAR SIZE		18"	20"	22"	24"	26"	28"	30"
CHEST (CM)		52-55	56-59	60-64	65-69	70-75	76-81	82-87
HIP (CM)		54-57	58-61	62-66	67-71	72-77	78-83	84-89



Horse Rugs

Measurement from A to B			EU Back Seam Equivalent
CM	INCHES	FEET	CM
114	45	3'9	75
122	48	4'0	80
130	51	4'3	85
137	54	4'6	90
145	57	4'9	95
152	60	5'0	100
160	63	5'3	110
168	66	5'6	115
175	69	5'9	125
183	72	6'0	130
191	75	6'3	140
198	78	6'6	145
206	81	6'9	155
213	84	7'0	160
221	87	7'3	165
229	90	7'6	170



Sizing

We find most riders who wear a standard size in any one of our competitors' breeches will fit similarly in our sizing. We do offer the additional benefit of in-between waist sizes in several instances, so for example if you find a 26 inch waist too tight, but a 28 inch waist a bit loose, we do offer a 27 inch waist size for a near perfect fit!

Women's Waist Sizing

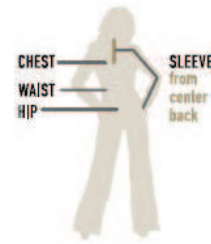
USA/Canada (inches)	22	24	26	27	28	29	30	32	34
Europe	34	36	38	39	40	41	42	44	46
UK	20	22	24	25	26	27	28	30	32

Men's Waist Sizing

USA/Canada (inches)	28	30	31	32	33	34	35	36	38
Europe	44	46	47	48	49	50	51	52	54
UK	28	30	31	32	33	34	35	36	38

WOMEN'S

	ALL	XS	S	M	L	XL	XXL					
CHEST	IN	32	33	34	35	36	37	38 ½	40	41 ½	43	45-47
	CM	81.28	83.82	86.36	88.9	91.44	93.98	97.79	101.6	105.41	109.22	114.3-119.38
WAIST	IN	26	26	27	28	29	30	31 ½	33	34 ½	36	38-40
	CM	63.5	66.04	68.58	71.12	73.66	76.2	80.01	83.82	87.63	91.44	96.52-101.6
LOW HIP	IN	26	36	37	38	39	40	41 ½	43	44 ½	46	48-50
	CM	88.9	91.44	93.98	96.52	99.06	101.6	105.41	109.22	113.03	116.84	121.92-127
SLEEVE	IN	26	30 ½	30 ¾	31	31 ¼	31 ½	31 ¾	32	32 ¼	32 ½	32 ¾
	CM	76.84	77.47	78.11	78.74	79.38	80.01	80.65	81.28	81.92	82.55	82.55
SHOW SHIRTS	US		30	32	34	36	38	40	42			
	UK/EUR		32	34	36	38	40	42	44			
HUNT COATS	US/UK		8R	10R	12R	14R	16R	18R	20R			
	EUR		32R	34R	36R	38R	40R	42R	44R			
	US/UK			10L	12L	14L	16L	18L				
	EUR			34L	36L	38L	40L	42L				
BREECHES	US/UK		22R	24R	26R	28R	30R	32R	34R	36R		
	GER		34	36	38	40	42	44	46	48		
	US/UK		22L	24L	26L	28L	30L	32L	34L	36L		
	GER		68	72	76	80	84	88	92	96		
NUMERIC SIZE	USA		2	4	6	8	10	12				



MEASUREMENT GUIDE

CHEST Measure around the shoulder blades, under the armpits and over the fullest part of the bust.

SLEEVE Bend your arm 90 degrees and put your hand on your hip. Hold the tape measure at the center back of your neck and measure across your shoulder to your elbow, and then down to your wrist.

WAIST Find your natural waistline and measure.

HIP Measure the fullest part of the hip, usually 7-9 inches below the waist.

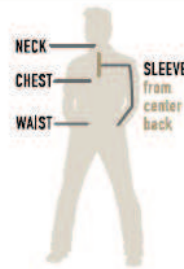
LONG & TALL LENGTHS Sleeve lengths are 1" longer and body lengths are 1½" longer than regular sizing.

BREECHES Ariat® breeches are designed to hit a few inches above your ankle bone for comfort. Inseams 25.5" Regular and 27.5" Long.



MEN'S

		S	M	L	XL	XXL					
NECK	IN	14	14 ¼	15	15 ½	16	16 ½	17	17 ½	18	18 ½
	CM	36.2	37.5	38.1	39.4	40.6	41.9	43.2	44.5	45.7	47
CHEST	IN	35	37	38	40	42	44	46	48	50	52
	CM	88.9	94	96.5	101.6	106.7	111.8	116.8	121.9	127	132
WAIST	IN	28	30	32	34	36	38	40	42	44	46
	CM	73.6	78.7	81.3	86.4	91.4	96.5	101.6	106.7	111.8	117
LOW HIP	IN	35	37	38	40	42	44	46	48	50	52
	CM	88.9	94	96.5	101.6	106.7	111.8	116.8	121.9	127	132
SLEEVE	IN	33	33 ½	34	34 ½	35	35 ½	35 ¾	36	36	36 ½
	CM	83.8	85.1	86.4	87.6	88.9	90.2	90.2	91.4	91.4	92.7
BREECHES	US/CANADA/UK	28R	30R	32R	34R	36R	38R	40R			
	GER	44	46	48	50	52	54	56			
	US/CANADA/UK	28L	30L	32L	34L	36L	38L	40L			
	GER	86	90	94	98	102	106	110			



MEASUREMENT GUIDE

NECK Measure around the base of your neck, inserting a finger or two between the tape and your neck to allow for comfort.

CHEST Measure around the chest, under the armpits and over the highest part of your chest and shoulder blades keeping the tape parallel to the floor.

SLEEVE Bend your arm 90 degrees and put your hand on your hip. Hold the tape measure at the center back of your neck and measure across your shoulder to your elbow, and then down to your wrist.

WAIST Find your natural waistline and measure.

LONG & TALL LENGTHS Sleeve lengths are 1" longer and body lengths are 1½" longer than regular sizing.

BREECHES Ariat breeches are designed to hit a few inches above your ankle bone for comfort. Inseams 26" Regular and 28" Long.

GIRLS'

		XS	S	M	L	XL	XXL
US/CANADA/UK		7	8	10	12	14	16
EUR		122	128	140	152	164	176
HEIGHT	IN	50 ½	52 ½	55	58	61	62 ½
	CM	128.3	133.4	139.7	147.3	155	158.8
CHEST	IN	26	27	28 ½	30	31 ½	33 ½
	CM	66	68.6	72.4	76.2	80	85.1
WAIST	IN	22 ½	23	24	25	26	27
	CM	57.2	58.4	61	63.5	66	68.6
HIP	IN	27 ½	28 ½	30	32	34	36
	CM	69.9	72.4	76.2	81.3	86.4	91.4
CB SLEEVE LENGTH	IN	24	24 ¼	25 ¼	27 ¼	28 ¼	30
	CM	61	62.9	65.4	69.2	73	76.2
INSEAM	IN	23	24 ¼	26	27 ½	29	29 ½
	CM	58.4	62.2	66	69.9	73.7	74.9

YOUTH UNISEX

		XS	S	M	L	XL	XXL
US/CANADA/UK		7	8	10	12	14	16
EUR		122	128	140	152	164	176
HEIGHT	IN	50	52	54	58	61	64
	CM	127.0	132.1	137.2	147.3	154.9	162.6
CHEST	IN	26 ½	27 ½	29	31	33	35
	CM	67.3	69.9	73.7	78.7	83.8	88.9
WAIST	IN	23 ½	24	25	26	27	28
	CM	59.7	61.0	63.5	66.0	68.6	71.1
HIP	IN	27 ½	28 ½	30	32	34	36
	CM	69.9	72.4	76.2	81.3	86.4	91.4
CB SLEEVE LENGTH	IN	23 ¼	24 ¼	26	27 ½	29 ¼	31 ¼
	CM	60.3	62.2	66.0	69.9	74.9	80.0
INSEAM	IN	23	24 ¼	26	27 ½	29	29 ½
	CM	58.4	62.2	66.0	69.9	73.7	74.9

WOMEN'S TALL BOOTS

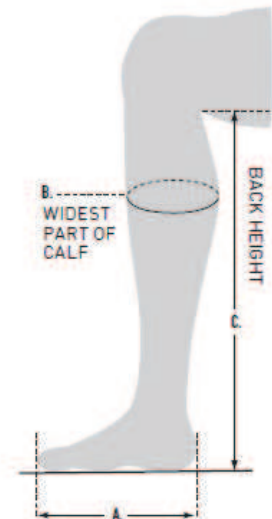
INCHES	LEG SIZE														
	SHORT			MEDIUM						TALL					
	Slim (SS)	Regular (RS)	Wide (WS)	Xslim (XSM)	Slim (SM)	Regular (RM)	Full (FM)	Wide (WM)	Xwide (XWM)	Xslim (XST)	Slim (ST)	Regular (RT)	Full (FT)	Wide (WT)	
	WIDTH / HEIGHT			WIDTH / HEIGHT						WIDTH / HEIGHT					
FOOT SIZE	5½ - 6	12¼ / 16½	13 / 16½	14½ / 16½	11½ / 17¼	12¼ / 17¼	13 / 17¼	13¾ / 17¼	14½ / 17¼	15½ / 17¼	11½ / 18½	12¼ / 18½	13 / 18½	13¾ / 18½	14½ / 18½
	6½ - 7	12½ / 17	13½ / 17	15 / 17	11¾ / 17¼	12½ / 17¼	13½ / 17¼	14 / 17¼	15 / 17¼	16 / 17¼	11¾ / 19	12½ / 19	13½ / 19	14 / 19	15 / 19
	7½ - 8	13 / 17¼	13¾ / 17¼	15½ / 17¼	12¼ / 18	13 / 18	13¾ / 18	14½ / 18	15½ / 18	16½ / 18	12¼ / 19¼	13 / 19¼	13¾ / 19¼	14½ / 19¼	15½ / 19¼
	8½ - 9	13½ / 17¼	14 / 17¼	15¾ / 17¼	12¾ / 18½	13½ / 18½	14 / 18½	15 / 18½	15¾ / 18½	16¾ / 18½	12¾ / 19¼	13½ / 19¼	14 / 19¼	15 / 19¼	15¾ / 19¼
	9½ - 10	13¾ / 18	14½ / 18	16 / 18	13 / 19	13¾ / 19	14½ / 19	15½ / 19	16 / 19	17 / 19	13 / 20	13¾ / 20	14½ / 20	15½ / 20	16 / 20
	10½ - 11	14 / 18½	15 / 18½	16½ / 18½	13¾ / 19¼	14 / 19¼	15 / 19¼	15¾ / 19¼	16½ / 19¼	17½ / 19¼	13¾ / 20½	14 / 20½	15 / 20½	15¾ / 20½	16½ / 20½

MEN'S TALL BOOTS

INCHES	LEG SIZE							
	SHORT		MEDIUM			TALL		
	Slim (SS)	Regular (RS)	Slim (SM)	Regular (RM)	Full (FM)	Slim (ST)	Regular (RT)	
	WIDTH / HEIGHT		WIDTH / HEIGHT			WIDTH / HEIGHT		
FOOT SIZE	7 - 7½	13 / 18	14 / 18	13 / 19¼	14 / 19¼	15 / 19¼	13 / 20½	14 / 20½
	8 - 8½	13½ / 18½	14½ / 18½	13½ / 19¼	14½ / 19¼	15½ / 19¼	13½ / 21	14½ / 21
	9 - 9½	13¾ / 18¾	14¾ / 18¾	13¾ / 20	14¾ / 20	15¾ / 20	13¾ / 21¼	14¾ / 21¼
	10 - 10½	14 / 19¼	15 / 19¼	14 / 20½	15 / 20½	16 / 20½	14 / 21¼	15 / 21¼
	11 - 11½	14½ / 19¼	15½ / 19¼	14½ / 21	15½ / 21	16½ / 21	14½ / 22¼	15½ / 22¼
	12	15 / 20	16 / 20	15 / 21¼	16 / 21¼	17 / 21¼	15 / 22½	16 / 22½

TALL BOOTS MEASUREMENT GUIDE

- Sit in a straight chair with your knees bent at 90 degrees to the floor.
- Wear the breeches and socks that you would most likely wear with your tall boots.
- Have someone else measure your calves, if possible:
 - A. Measure foot for shoe size.
 - B. To determine calf width: Measure the calf width at the widest part of the calf.
 - C. To determine calf height: Measure leg height from the floor to the bend behind the knee:
 - Add approximately ½" - ¾" to allow for drop.
 - Approximate drop allowance is built into the chart height measurements so make sure you add drop to your leg measurement. Non-zip styles will drop more than zip styles.





NOEL ASMAR

EQUESTRIAN

SHIRTS/OUTERWEAR	BUST	WAIST	HIPS
XXS	33	26	35
XS	35	28	37
S	37	30	39
M	39	32	41
L	41	34	43
XL	43	36	45
2XL	45	38	47
3XL	47	40	49

BREECHES	WAIST	HIP
24	24	33
26	26	35
28	28	37
30	30	39
32	32	41
34	34	43
36	36	45
38	38	47

NOEL ASMAR

UNIFORMS

SIZE GUIDE • MEN		
MEN'S SIZE	CHEST	WAIST
S	36.5	30
M	39.5	33
L	42.5	36
XL	45.5	39
XXL	49.5	43
3XL	53.5	47
4XL	57.5	51
5XL	61.5	55
28	36.5	30
30	38.5	32
32	40.5	34
34	42.5	36
36	44.5	38
38	46.5	40
40	49.5	43
42	52.5	46
44	55.5	49
46	58.5	52
48	61.5	55
50	64.5	58
52	67.5	61
54	70.5	64

Back on Track Products - Size Charts

HUMAN PRODUCT SIZES

Ankle Brace (By American Shoe Size)

	Top 5"			
	Size	above heel	Ankle	Arch
XS	6 - 6½	8"	7½"	7"
Small	7 - 8	9"	8½"	8"
Medium	8½ - 10	9½"	9"	8½"
Large	10½ - 12	10½"	10"	9"
XL	12 and up	11"	10½"	9½"

Back Brace

Size	Waist
Small	26" - 32"
Medium	33" - 38"
Large	39" - 44"
XL(wide)	45" - 57"

Back Brace-Double Layer

Size	Waist
Small	23½"-33½"
Medium	29½"-39¼"
Large	33½"-43¼"
XL	39¼"-51"

Boxer Shorts

Men's (Runs Small)

Size	Waist
Small	23" - 38"
Medium	24" - 40"
Large	27" - 42"
XL	29" - 44"
XXL	30" - 46"
XXXL	31" - 48"

Boxer Shorts

Women's (Runs Small)

Size	Waist
Small	4 to 6 21" - 32"
Medium	8 to 10 23" - 34"
Large	12 to 14 25" - 36"
XL	16 to 18 26" - 39"
XXL	20 28" - 42"
XXXL	22 to 24 30" - 44"

Calf Brace

Size	Top	Bottom	Length
Small	10¾"	7½"	10¾"
Medium	11½"	8½"	10¾"
Large	13½"	9"	10¾"
XL	15"	11"	10¾"

Elbow Brace

Size	3" above bend
XS	Less than 9"
Small	9" - 10"
Medium	10" - 11"
Large	11" - 12"
XL	12" - 13"

Gloves: Unisex (Stretchy material)

Width: circumference of knuckles at base of fingers

Length: from top of middle finger to wrist

Size	Width	Length
XS	6"	6¾"
Small	7"	7¼"
Medium	7"	7¾"
Large	8"	8¼"
XL	8"	9½"

Knee Brace (Basic)

Knee Brace w/Strap

Thigh measurement 5½" above patella (knee cap)

Size	Thigh	Size	Thigh
Small	13"	Small	16½"
Medium	15"	Medium	17½"
Large	16½"	Large	18½"
XL	17½"	XL	21½"
XXL	21½"	XXL	23½"
XXXL	23½"	XXXL	25½"

Riding Gloves (Run Small)

Width: circumference of knuckles at base of fingers

Length: from top of middle finger to wrist

Size	Width	Length
6½	3¼"	6¼"
7	3¼"	6½"
7½	3¼"	6½"
8	3½"	6¾"
8½	3½"	6¾"
9	3½"	7"
9½	3¾"	7"
10	3¾"	7½"
10½	4"	7½"
11	4"	7¾"
11½	4¼"	8"

4-Way Stretch Knee Brace (Stretchy material)

Thigh sizes similar to Basic Knee Brace

Size	Top	Bottom	Length
Small	11"	10"	11"
Medium	12"	11"	11¼"
Large	13"	11½"	11¼"
XL	15"	12"	11½"
XXL	17"	14"	12"



Please Note: This is a guide only.

ANIMO Women's Jackets

UK	4	6	8	10	12	14	16	18	20
ITALY	36	38	40	42	44	46	48	50	52
US	2	4	6	8	10	12	14	16	18

ANIMO Women's Breeches

UK	0	2	4	6	8	10	12	14	16	18	20	22
ITALY	30	32	34	36	38	40	42	44	46	48	50	52
US	00	0	2	4	6	8	10	12	14	16	18	20

ANIMO Women's Shoe Sizes

UK	3	3.5	4	4.5	5	5.5	6	6.5	7
EU	36	36.5	37	37.5	38	38.5	39	39.5	40
US	5.5	6	6.5	7	7.5	8	8.5	9	9.5

ANIMO Men's Jackets

UK	32	34	36	38	40	42	44	46
ITALY	42	44	46	48	50	52	54	56
US	32	34	36	38	40	42	44	46

ANIMO Men's Breeches

UK	25/26	27/28	29/30	31/32	33/34	35/36	37/38	39/40
ITALY	42	44	46	48	50	52	54	56
US	25/26	27/28	29/30	31/32	33/34	35/36	37/38	39/40

ANIMO Men's Shoe Sizes

UK	5	6	7	8	9	10	11	12
EU	38	39.5	40.5	42	43	44.5	45.5	47
	6	7	8	9	10	11	12	13

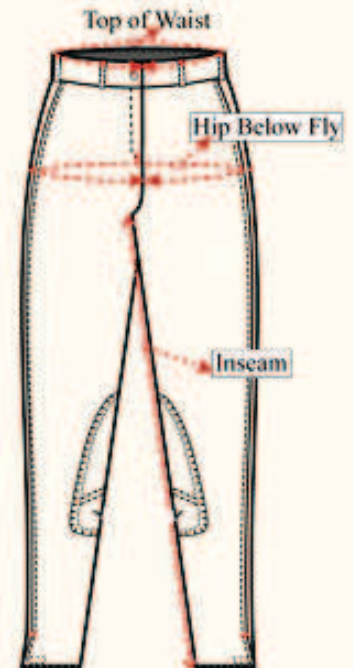
knix
wear™

FitKnix Sizing Chart

	CLOTHING SIZE	HIPS
XS	0-2	30"-33"
S	4-6	34"-37"
M	8-10	38"-41"
L	12-14	42"-44"
XL	14-16	45"-47"
XXL	18-20	48"-50"

Equine Couture Ladies Sportif Full Seat Breeches w/ CS2 Bottom - 110255

Sizes	24	26	28	30	32	34	36
Waist	25 1/2	27 1/2	29 1/2	31 1/2	33 1/2	35 1/2	37 1/2
Hip	32	34	36	38	40	42	44
Inseam	28 1/4	28 1/4	28 1/4	28 1/4	28 1/4	28 1/4	28 1/4
Measurement in inches							



RJ Classics Ladies Show Coats

Approximate Measurement Guidelines

<i>Size</i>	<i>Bust</i>	<i>Waist</i>
00	29 - 30	25 - 26
0	32 - 33	26 - 27
2	34 - 35	27 - 28
4	35 - 36	28 - 29
6	36 - 37	29 - 30
8	37 - 38	30 - 32
10	38 - 39	32 - 33
12	39 - 40	33 - 34
14	40 - 41	34 - 35
16	42 - 43	35 - 36
18	43 - 44	36 - 37
20	44 - 45	37 - 38
22	45 - 46	38 - 39
24	46 - 47	39 - 40

Approximate Height Guide

<i>Length</i>	<i>Height</i>
Short	5' 0" to 5' 4"
Regular	5' 4" to 5' 7"
Long	5' 7" and Up

RJ Classics Childrens Show Coats

Approximate Measurement Guidelines

<i>Size</i>	<i>Chest</i>	<i>Waist</i>	<i>Length from Nape of Neck</i>
2	20 1/2	20	14 1/2
4	22 1/2	21	15 1/2
6	24 1/2	22	19 1/4
8	27	23	20 1/4
10	28 1/2	24	21 1/4
12	30	25	22 1/4
14	31 1/2	26	23
16	33	27	23 3/4
18	34 1/2	28	24 1/2
20	36	29	25 1/4

Sizes 12-16 Long: one inch longer

Sizes 6-20 Short: one inch shorter

* Please note this is only a guide. There may be natural variance due to differences in measuring



Pikeur Size Chart



Pikeur Ladies Breeches

GER	34	36	38	40	42	44	46	48
USA	4	6	8	10	12	14	16	18
UK	6	8	10	12	14	16	18	20

Pikeur Mens Breeches

GER	44	46	48	50	52	54	56	58
USA	28	30	32	34	36	38	40	42
UK	28	30	32	34	36	38	40	42

Pikeur Ladies Jackets

GER	34	36	38	40	42	44	45	48
USA	6	8	10	12	14	16	18	20
UK	6	8	10	12	14	16	18	20
Chest Size (Inches)	30	32	34	36	38	40	42	44

Pikeur Mens Jackets

GER	44	46	48	50	52	54	56	58
USA	34	36	38	40	42	44	46	48
UK	34	36	38	40	42	44	46	48

Pikeur Children's Sizes

CM	116	122	128	134	140	146	152	158	164	170	175
Age	6	7	8	9	10	11	12	13	14	15	16
Approx Chest Size:									30	32	34



KINGSLAND

EQUESTRIAN

SIZE GUIDE

LADIES

US SIZE	KL LADIES	KL UNISEX	LADIES BREECHES
2	XS	XXS	32
4	S	XS	34
6	M	S	36
8	L	M	38
10/12	XL	L	40
14	XXL	XL	42
16		XXL	44

MENS

US SIZE	KL MENS	KL UNISEX	MENS BREECHES
XS	S	M	36/46
S	M	L	38/48
M	L	XL	40/50
L	XL	XXL	42/52
XL	XXL		44/54



STORMTECH[®]

PERFORMANCE

SIZE	BODY SIZING: JACKET		BODY SIZING: PANT	
	SLEEVE (Inch / cm)	CHEST (Inch / cm)	WAIST (Inch / cm)	INSEAM (Inch / cm)
2XS	-	31-33 / 79-84	-	-
XS	32-33 / 81-84	33-35 / 84-89	30 / 76	30 / 76
S	33-34 / 84-86.5	35-38 / 89-96.5	32 / 81	31 / 79
M	34-35 / 86.5-89	39-42 / 99-106.5	34 / 86.5	31 / 79
L	35-36 / 89-91.5	43-46 / 109-117	36 / 91.5	32 / 81
XL	36-37 / 91.5-94	47-50 / 119-127	38 / 96.5	32 / 81
2XL	37-38 / 94-96.5	50-53 / 127-135	40 / 101.5	33 / 84
3XL	38-39 / 96.5-99	54-57 / 137-145	42 / 106.5	33 / 84
4XL	39-39.5 / 99-100	58-61 / 147-155	42 / 106.5	33 / 84
MEN				
XS	30-31 / 76-79	30-32 / 76-81	-	-
S	31-32 / 79-81	32-35 / 81-89	28 / 71	30 / 76
M	32-33 / 81-84	35-38 / 89-96.5	30 / 76	31 / 79
L	33-34 / 84-86.5	38-41 / 96.5-104	32 / 81	31 / 79
XL	34-35 / 86.5-89	41-44 / 104-112	34 / 86.5	32 / 81
2XL	35-36 / 89-91.5	44-46 / 112-117	37 / 94	32 / 81
WOMEN				
S	27-28 / 68.5-71	26-28 / 66-71	24 / 60	24 / 60
M	29-30 / 74-76	28-31 / 71-79	26 / 66	26 / 66
L	31-32 / 79-81	31-34 / 79-86.5	28 / 71	28 / 71
XL	33-34 / 84-86.5	34-36 / 86.5-91.5	30 / 79	30 / 79
YOUTH				

Size specifications are based on body sizing measurements. Please refer to the chart below as a general guideline for sizing.

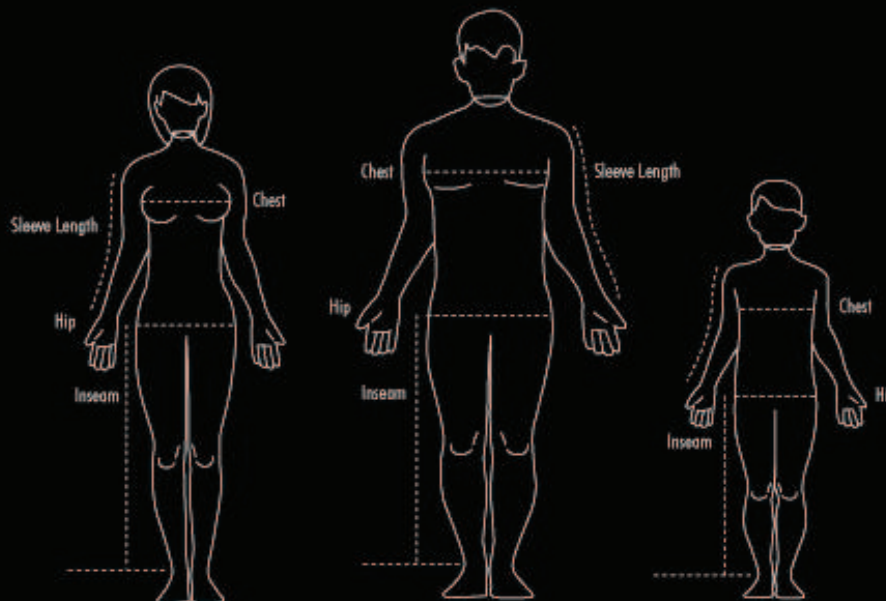
PLEASE NOTE: We recommend the use of sizing samples in order to ensure the most accurate sizing for our styles.

CHEST: Measure just under the arms and across shoulder blades holding tape firm and level.

HIP: In Standing position, measure around the fullest point of your hip.

SLEEVE LENGTH: With arm relaxed at side and slightly bent measure from center back neck, over the shoulder, down to the outer wrist.

INSEAM: In Standing position, measure from the crotch inseam to the ankle bone.





WALDHAUSEN

DIE GANZE WELT DES REITSPORTS

Damen-Kleidergrößen						
	XS	S	M	L	XL	XXL
D	34	36	38/40	42/44	46	48
I	38	40	42/44	46/48	50	52
USA Jacken	4 - 6	6 - 8	8 - 10	10 - 12	12 - 14	14 - 16
USA Hosen	24	26	28/30	32/34	36	38
GB Jacken	8 - 10	10 - 12	12 - 14	14 - 16	16 - 18	18 - 20
GB Hosen	22	24	26/28	30/32	34	36

Herren-Kleidergrößen						
	XS	S	M	L	XL	XXL
D	44	46	48/50	52/54	56	58
USA Jacken	34	36	38/40	42/44	46	48
USA Hosen	28	30	32/34	36/38	40	42
GB Jacken	34	36	38/40	42/44	46	48
GB Hosen	28	30	32/34	36/38	40	42

Kinder-Kleidergrößen						
Alter	5 - 6	7 - 8	9 - 11	12 - 13	14 - 15	16 - 17
D	116	128	140	152	164	176
USA/GB/F/I	7	9	11	13	15	17