



THE SHOE THAT GRIPS®

Autumn 2010



**the original
slip-resistant
shoe**

25 years and still gripping

Falcon
page 4

Over 35 million pairs sold worldwide!

the original slip-resistant shoe

25 years and still gripping

Recognised Leader Worldwide.

For over 25 years we've designed and manufactured shoes that keep you safe in the most slippery conditions. Independent Lab Tests prove that our patented SFC Mighty Grip™ Outsole Technology outperforms competing brands, **surpassing Industry Slip-Resistant Standards by OVER 100%**! See page 11 for Independent Lab Test Results

LOW Direct Pricing.

Because we design and manufacture our own shoes, we're uniquely able to pass along tremendous savings directly to you. We're also able to provide an incredible assortment of styles for every work environment. **Open a Corporate Account to save even more!** Call us freephone today at 0808 101 7438 for details.

100% Satisfaction. Guaranteed!

We are so confident in the quality, performance and pricing of our shoes that we invite you to **try them Risk Free for up to 60 Days**. If you are not satisfied for any reason, simply return them for a **FREE Exchange or Easy Return** using the pre-paid shipping label included in your shoe box.*



new

Revolution

Stress-relieving, shock-absorbing technology keeps you comfortable and safe.

Attack any shift with confidence with our exclusive reinforced air piston heel support system, which reduces impact-related stress on knees and legs by up to 70%. Leather uppers with nylon mesh accents improve breathability, while the padded collar and removable cushioned insoles wrap you in comfort.

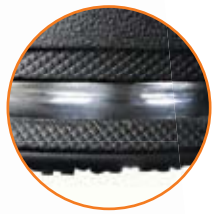
WOMEN'S: 9041 Black
2.5-8 (35-42)

our mission

is to provide you with **the best safety footwear** available, anywhere.

We offer friendly freephone service and convenient online ordering, delivering the world's top-rated slip-resistant shoe quickly to your workplace or home. As our own manufacturer, we can provide superior comfort and durability at guaranteed low prices where others cannot. We back up these promises with an Industry-best 60 Day Free Exchange and Easy Return policy.* Thank you for your business!

* Shoes must be returned unsoiled in their original packaging. For returns, we will gladly refund the shoe purchase price less £5,95 or €6,95 per pair processing fee. OR, you may choose to return shoes at your own expense without using the pre-paid label, and the processing fee will be waived.



Exclusive Air Piston System Technology reduces stress on knees and legs by absorbing between 40-70% of walking or running impact energy.



Evolution

Serious comfort and safety in an innovative, shock-absorbing design.

Attack those double shifts in our exclusive air piston heel support system designed to absorb up to 70% of impact energy with every step. Genuine leather uppers, patent leather detailing, a padded collar and removable cushioned insoles provide additional comfort and breathability.

MEN'S: 8028 Black
5-14 (38-50)

new

FREE
exchanges
EASY
returns

ORDER TODAY!



GET THE SHOE THAT GRIPS

“These are the most comfortable shoes; I have NEVER slipped in the kitchen”

Dana S.
Hostess
Walt Disney World



TWX

The popular choice for style, slip control and long-haul wear.

Achy feet are now a thing of the past. Inspired by long-distance running shoes, the TWX sports water-resistant, full grain leather and our lightweight flexible midsole. Removable insoles provide the ultimate in comfort. Our proven slip-resistant outsole gives you traction and stability whether you're on slick marble or greasy tile.

MEN'S: 8020 Black
5-12 (38-47)

WOMEN'S: 9020 Black,
4-8 (37-42)



Falcon

This breathable, cross-trainer-inspired shoe gets our patented slip-resistant treatment.

Stay comfortable through your longest shifts wearing these shoes with removable cushioned insoles and a padded ankle collar. Genuine leather uppers and breathable ballistic knit accents further emphasize this multi-tasking style. Above all, stay grounded with our SFC Mighty Grip slip-resistant outsole.

MEN'S: 6007 Black
5-12 (38-47)

MEN'S: 6107 White
5-12 (38-47)

WOMEN'S: 7007 Black
2.5-9.5 (35-44)

WOMEN'S: 7107 White
4-8 (37-42)



Peak performance when you're on the move



new

Panther II

Combine fashion and function with a sleek slip-on that's built to perform.

Dress up your work day with a genuine leather, water-resistant shoe that is both comfortable and modern. Our exclusive SFC Mighty Grip outsole helps prevent falls on slick surfaces. Designed with removable cushioned insoles, elastic goring, and stitch-reinforced heel and toe construction, this style also features a steel shank for even more support.

MEN'S: 6011 Black
5-12 (38-47)

FREE
exchanges
EASY
returns

Nitro

Safety meets modern with this sleek, low-profile design.

Walk in style with this genuine leather lace-up. Move around comfortably with removable cushioned insoles and added lateral support. Our unmatched, shock-absorbing slip-resistant outsole is designed with your safety and hard-working schedule in mind.

MEN'S: 6042 Black **WOMEN'S:** 7042 Black
5-13 (38-48) 4-8 (37-42)



new

Spirit

Set a swift pace with this sleek, low-profile design.

Work in comfort and style with removable cushioned insoles and added lateral support. Our unmatched, shock-absorbing slip-resistant outsole is designed with your safety and hard-working schedule in mind. Water-resistant, genuine leather uppers provide durability and laces ensure a great fit.

WOMEN'S: 7042-10 Black
2.5-8 (35-42)



Jazz

A streamlined classic remastered with our legendary slip resistance.

Long days on your feet fly by with this genuine leather style and our unparalleled shock-absorbing, slip-resistant outsole. For those who never seem to stop moving, the removable cushioned insoles support every step you take.

WOMEN'S: 9031 Black
4-8 (37-42)



Peak performance when you're on the move



new

Panther II

Combine fashion and function with a sleek slip-on that's built to perform.

Dress up your work day with a genuine leather, water-resistant shoe that is both comfortable and modern. Our exclusive SFC Mighty Grip outsole helps prevent falls on slick surfaces. Designed with removable cushioned insoles, elastic goring, and stitch-reinforced heel and toe construction, this style also features a steel shank for even more support.

MEN'S: 6011 Black
5-12 (38-47)

FREE
exchanges
EASY
returns

Nitro

Safety meets modern with this sleek, low-profile design.

Walk in style with this genuine leather lace-up. Move around comfortably with removable cushioned insoles and added lateral support. Our unmatched, shock-absorbing slip-resistant outsole is designed with your safety and hard-working schedule in mind.

MEN'S: 6042 Black **WOMEN'S:** 7042 Black
5-13 (38-48) 4-8 (37-42)



new

Spirit

Set a swift pace with this sleek, low-profile design.

Work in comfort and style with removable cushioned insoles and added lateral support. Our unmatched, shock-absorbing slip-resistant outsole is designed with your safety and hard-working schedule in mind. Water-resistant, genuine leather uppers provide durability and laces ensure a great fit.

WOMEN'S: 7042-10 Black
2.5-8 (35-42)



Jazz

A streamlined classic remastered with our legendary slip resistance.

Long days on your feet fly by with this genuine leather style and our unparalleled shock-absorbing, slip-resistant outsole. For those who never seem to stop moving, the removable cushioned insoles support every step you take.

WOMEN'S: 9031 Black
4-8 (37-42)



Eastside

Slips on and stays on, with the comfort and support of a running shoe. Move through a full day's work in casual comfort. This popular, genuine leather design combines our patented slip-resistant outsole with a lightweight flexible midsole, removable cushioned insoles and a padded collar.

MEN'S: 6050 Black

5-12 (38-47)

WOMEN'S: 7050 Black, 7150 White

2.5-8 (35-42)



new

Coming in October

Blaze

Combine fashion and function with a sleek slip-on that's built to perform.

Dress up your work day with a genuine leather, water-resistant shoe that is both comfortable and modern. Our exclusive SFC Mighty Grip outsole helps prevent falls on slick surfaces. Designed with removable cushioned insoles, elastic goring, and stitch-reinforced heel and toe construction, this style also features a steel shank for even more support.

WOMEN'S: 7011 Black

3-8 (36-42)



Old School Low-Rider

An iconic look delivers comfort and safety that never goes out of style.

Take the fun, spirited look you love to work with these shoes made of water-resistant, genuine leather. Designed for long-lasting durability, these shoes also feature our SFC Mighty Grip slip-resistant outsole, cushioned insoles and a lightweight flexible midsole, enabling you to work long hours in total comfort.

MEN'S: 6040 Black

5-12 (38-47)

WOMEN'S: 4040 Black

4-8 (37-42)



GET THE SHOE THAT GRIPS

casual

“These shoes are
durable & comfortable!
outlasting any other
brand I’ve bought before”

Sandra S.
Human Resources Manager,
Hotel Intercontinental



Pegasus

The latest in non-slip footwear has a scooped ankle, bungee laces and a playful attitude.

Built for work, but cute enough for play, this slip-on keeps you on your feet with our SFC Mighty Grip slip-resistant outsole. Criss-crossed bungee laces flex for comfort and a great fit, the perforated leather breathes, and the nubuck accents add style. Includes our lightweight flexible midsole and removable cushioned insoles for lasting comfort.

WOMEN'S: 9040 Black
4-8 (37-42)



Hawk

A casual style with incredible grip complemented by contrast stitching and sleek lines.

Take on any surface wearing our proven slip-resistant, shock-absorbing outsole. Trust in our water-resistant work shoe with leather and man-made uppers as you navigate through spills and puddles. Removable insoles are combined with a steel shank for the ultimate in comfort and arch support.

MEN'S: 8026 Black **WOMEN'S:** 9026 Black
5-13 (38-48) 4-8 (37-48)

SFC Froggz® Classic

This versatile vegan style is a trusted all-around favourite.

It began in the kitchen and can now be found everywhere. This is the multi-tasking shoe that started it all with its self-massaging insoles, legendary slip-resistant outsole and pivotal strap for heel support. Made of durable, anti-bacterial, high-grade EVA/rubber blend.

MEN'S & WOMEN'S:
5000 Black, 5001 White
3-14 (37-48)



new

SFC Froggz® Pro

An enclosed heel and cushioned insoles make our new design ideal for any work environment.

The newest addition to the Froggz collection takes safety to a new level with an enclosed 3.175 cm heel. Removable cushioned insoles provide hours of comfort and support. Made with a durable, high-grade EVA/rubber blend. This clog is both anti-bacterial and easy-to-clean.

MEN'S & WOMEN'S:
5008 Black
3-13 (37-47)



Sport Clog

A classic clog design gets a safety update.

Stay safe on slippery floors with our iconic, ergonomic design featuring our lightweight flexible midsole and patented shock-absorbing SFC Mighty Grip outsole. This beautiful full grain leather, water-resistant clog is made for extended standing or walking, while cushioned insoles and a steel-shank give hard-working feet an extra level of comfort and support. Wear the convertible strap up or down.

WOMEN'S: 9066 Black
4-8 (37-42)



Wear the convertible strap up or down.



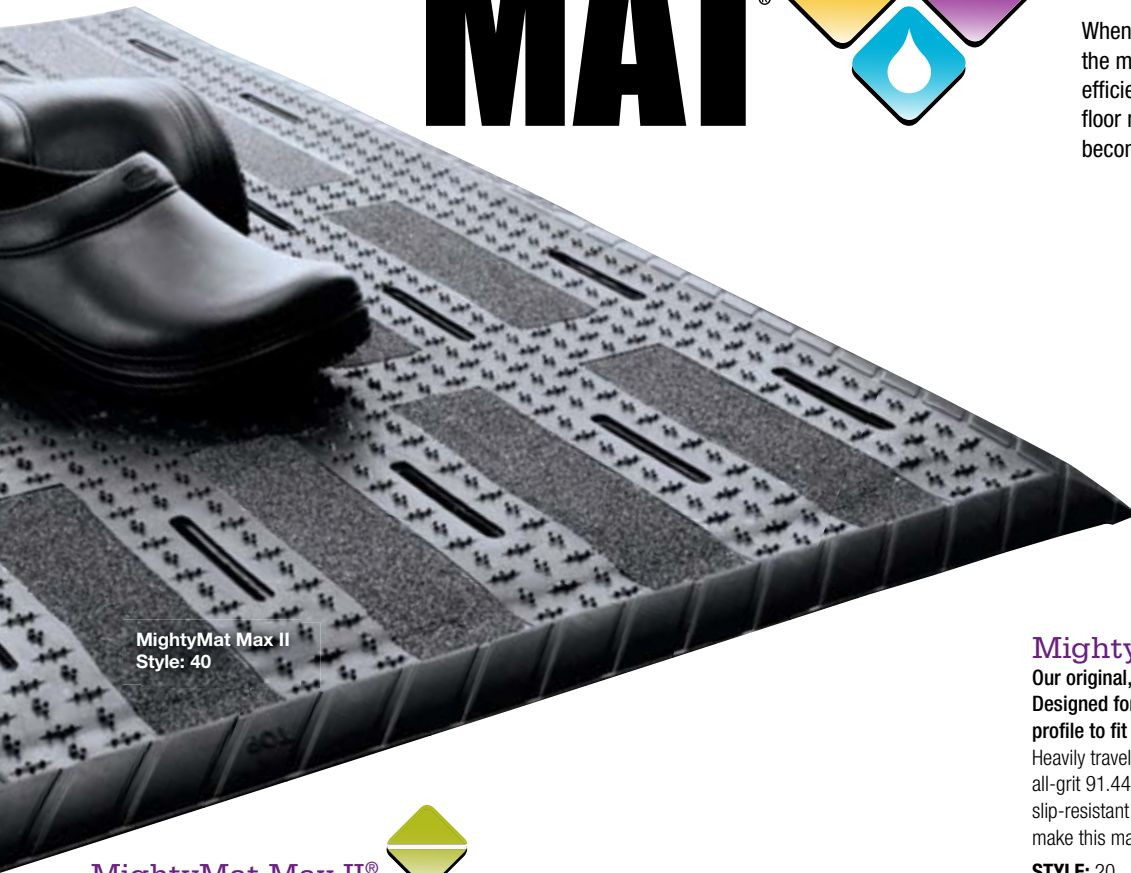
GET THE SHOE THAT GRIPS

MIGHTY MAT®



Safety starts from the floor up

When employees have both feet safely on the mat, they work faster, better and more efficiently. With MightyMat® slip-resistant floor mats, any greasy, slippery walkway becomes a safe, high-traction surface.



MightyMat Max II
Style: 40

MightyMat Max II®

The ultimate anti-fatigue, slip-resistant mat keeps you safe and comfortable all day.

Treat employees that stand in one place for hours at a time to an easier shift. This 91.44 cm x 122 cm mat keeps them happy with a deep-cushioned foam core, anti-bacterial properties, a non-slip rubber base, and drainage slots.

STYLE: 40



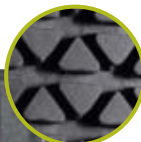
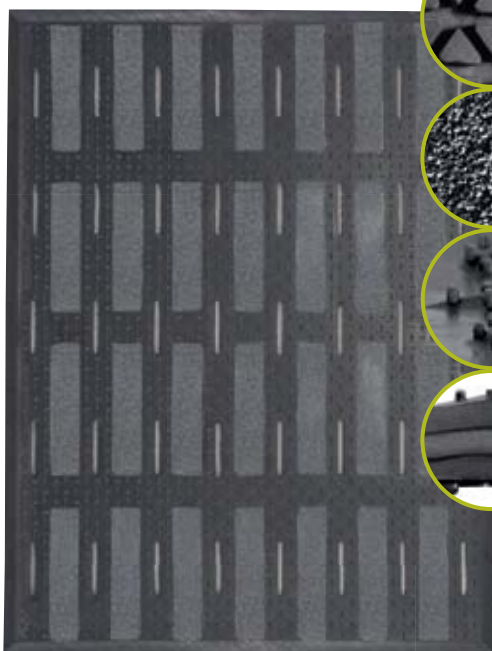
MightyMat Classic®

Our original, slip-resistant mat.

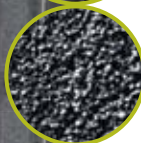
Designed for high-traffic spaces, and low profile to fit under doorways.

Heavily traveled areas call for this high-traction, all-grit 91.44 cm x 152 cm mat. A low-profile, slip-resistant base and anti-bacterial properties make this mat an instant classic.

STYLE: 20



Our exclusive slip-resistant base keeps mat in place



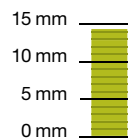
All-grit, high traction slip-resistant surface



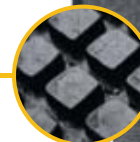
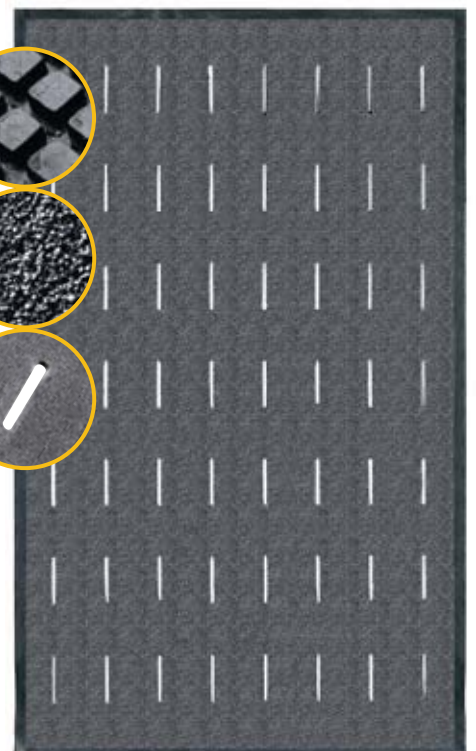
Anti-fatigue nodules add cushioning



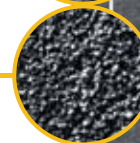
Cross section of deep-cushioned anti-fatigue layer



Mat Thickness: 14.8 mm



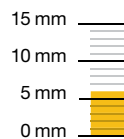
Our exclusive slip-resistant base keeps mat in place



All-grit, high traction slip-resistant surface



Drainage slots direct liquids away from surface



Mat Thickness: 6 mm

the sole that changed the industry

25 years and still gripping. In 1984, Shoes For Crews® revolutionized workplace safety by researching and designing the SFC Mighty Grip outsole. This incredibly slip-resistant formula helps you work safely, comfortably and in style. It's our ongoing dedication to the prevention of on-the-job accidents that makes us the global leader in slip-resistant footwear.

Perform

We engineer every shoe with the toughest materials including water-resistant leathers, ballistic knits and high-grade EVA/rubber blend.

Balance

Most designs include a supportive footboard, deep cushioned insoles, reinforced heels and extra arch support to not only comfort, but support every step.

Glide

Styles that feature Featherlight Technology are built with a lightweight flexible midsole or lightweight, durable, high-grade EVA/rubber blend that makes our shoes seem light as air. Look for this icon next to our lightest styles.



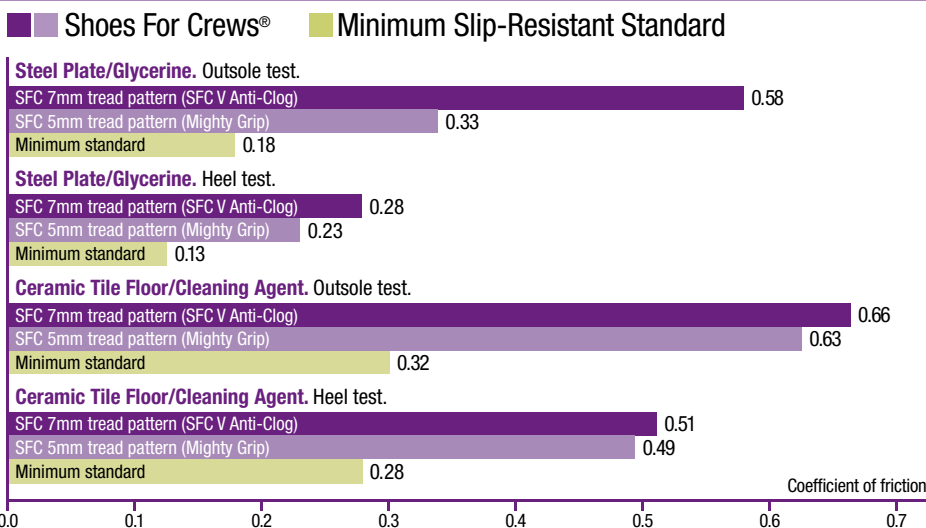
Elements in each shoe may vary.



Grip

Every Shoes For Crews design is built with our exclusive micro-channel tread pattern and rubber compound to grip wet and greasy surfaces with unbelievable traction.

We beat industry standards by over 100%!



Shoes For Crews® shoes are all SRC RATED

Our footwear was independently tested in wet, hazardous conditions and proved to be more than 100% effective than the minimum slip-resistant shoe standards. See chart at left for test results. Test performed by TUV Rheinland LGA Products GmbH in Berlin-Schöneberg, Germany: 03 June 2010.

Slip-Resistance Test: EN ISO 13287: 2007: 03 June 2010; results based on a scale where 0.0 is the absence of friction and 1.0 is very high friction such as on a dry carpet. See the full results at sfceurope.com/technology. All SFC shoes, unless otherwise noted use the 5mm Patented SFC Mighty Grip slip-resistant outsole.



GET THE SHOE THAT GRIPS



1 Bill To

Name _____ Account No. _____
 Company Name _____ VAT No. _____
 Company Address _____
 City _____ Country _____ Postcode _____
 Telephone No. (include Country Code) _____
 Email Address (required for email order confirmation) _____

2 Ship To (if different than billing address)

We cannot ship to P.O. boxes. We only ship to street addresses.

Name _____
 Company Name _____
 Company Address _____
 City _____ Country _____ Postcode _____
 Telephone Number _____
 Email Address **Sign-Up Today** to Receive New Product Offerings & Special Promotions!

3 Style No.	Description	Size	Colour	Quantity	Price	Sub Total

4 Ordering Method

Telephone: 0808 101 7438
 Fax: 00353 61 362929
 Website: www.sfceurope.com (select language)
 Address: Shoes For Crews (Europe) Ltd.
 Unit 3A, Western Business Park
 Ballymurtagh, Shannon, Co Clare, Ireland



Total Merchandise	
Shipping & Handling (see chart below)	
If VAT No. provided deduct Irish VAT rate*	
TOTAL	

*At time of printing VAT rate in Ireland @ 21%

5 Method of Payment

Cheque (Sorry no payment/cheque on delivery)

Credit Card VISA® MasterCard® American Express®

Credit Card Number

Expiration Date

Direct Debit _____ Swift/BIC (Bank Code)

IBAN/Bank Account Number *Direct Debit may not be available at time of printing in all regions.*

60 Days RISK FREE! Guaranteed!

Not responsible for any typographical errors.

Signature _____

Make any shoe slip-resistant with CrewGuard® slip-resistant overshoes



“These are AMAZING!”

E.G. Shift Supervisor Starbucks



CrewGuard®
Make any shoe slip-resistant and waterproof.
 Prepare for unexpected messes and situations with our slip-on overshoes. They protect you and your shoes with our patented SFC Mighty Grip outsole. Great for new hires, visitors or any employee not already wearing our top-rated footwear.

STYLE:
 50 Black, 55 White
Sizes: XXS-XXL



order with confidence

Recognised Leader Worldwide

Join McDonald's, Disney, and thousands of other corporations worldwide that rely on SFC to prevent slip and fall accidents before they happen. Most workplace accidents are preventable. With the patented SFC Mighty Grip slip-resistant outsole we have helped businesses just like yours reduce the occurrence of slip and fall accidents by up to 80%!

Ordering is as easy as 1-2-3

- 1) Call freephone: **0808 101 7438** or Fax: **00353 61 362929**
- 2) Go online: **www.sfceurope.com** (select language)
- 3) Or mail your completed order form to:
Shoes for Crews (Europe) LTD
Unit 3A, Western Business Park
Ballymurtagh, Shannon, Co Clare, Ireland

Standard delivery

In stock shoes are processed for immediate delivery (see low rates on order form). Contact us for Express Delivery options.

SAVE MORE as a Corporate Partner

Call today for details on how to open a Corporate account, and find out how you could save even more on our safety footwear.

Unbeatable Slip-Resistance!

All SFC shoes are SRC rated, that our outsoles provide you with a level of safety that surpasses the minimum means EN ISO 13287 standards. In fact, we surpass slip-resistant safety standards by over 100%! See page 11 for Independent Lab Test Results.



ELEMENT
TOP seller!
See details below

Element

A contemporary, upscale style with criss-cross Velcro® straps.

Maneuver safely through thick and thin with our incomparable slip-resistant, shock-absorbing outsole. Designed for hours of comfort, this lightweight, full grain leather shoe includes removable cushioned insoles. The adjustable Velcro® straps provide a secure fit.

WOMEN'S: 9039 Black
4-8 (37-42)



“Shoes For Crews® does a tremendous job keeping our accidents & costs under control”

James M.
Staff Director,
Insurance & Safety
McDonald's Corp.



new

Coming in October



Madison

Take every step with complete confidence and a polished look. This classic oxford design combines comfort and safety with removable cushioned insoles and our exclusive shock-absorbing, slip-resistant outsole. The water-resistant, full grain leather adds durability and the steel shank provides much-needed arch support.

WOMEN'S: 7006F Black
2.5-8 (35-42)

Cambridge

Impress the crowd with a professional look and a confident pace. Our classic oxford delivers comfort and safety as you stride through any situation. Crafted with durable water-resistant full grain leather, plus our stitch-reinforced, shock-absorbing outsole. Removable cushioned insoles and a steel shank add comfort and arch support.

MEN'S: 6006 Black
5-13.5 (38-49)
WOMEN'S: 7006 Black
2.5-8 (35-42)



dress



Diva

new

Our new buckle slip-on shoe!

This comfortable dress shoe features SFC Mighty Grip™ slip-resistant outsole technology, water-resistance in a full grain leather slip-on shoe. Cushioned insoles and featherlight outsole ensure comfort while the steel shank adds extra support. The rubber heel measures 3.5 cm.

WOMEN'S: 3598 Black
2.5–8 (35–42)



Mary Jane

You can have it all – safety, comfort and a fashionable look.

There's no need to compromise your style with our full grain leather strap-and-buckle shoe. Only you need to know that it's made with our 360° stitch-reinforced, slip-resistant outsole, cushioned insoles, and a supportive steel shank. The lightweight flexible midsole makes this fashion statement as light as air.

WOMEN'S: 3603 Black
2.5–9.5 (35–44)



GET THE SHOE THAT GRIPS |

Safety meets style.

new



Allure

A tailored wedge you can count on for hours of comfort.

Dress up for any occasion in this fashionable, lightweight shoe with patent leather accents and quilted, full grain leather uppers. With our exclusive slip-resistant outsole and cushioned insoles, you'll be standing comfortably pretty. An elastic strap ensures a secure fit.

WOMEN'S: 3604 Black
2.5–8 (35–42)

Envy

Work confidently and stand tall in our stacked heel loafer.

A traditional look treated with our exclusive slip-resistant outsole and soft, water-resistant, full grain leather. The flexible vamp and elastic goring make for a great fit, while cushioned insoles and a steel shank add comfort and support. The rubber heel measures 5 cm.

WOMEN'S: 3600 Black
2.5–9.5 (35–44)

Grace

A new sophisticated look paired with our legendary outsole.

Dress up your work day with our new slip-resistant pump. These shoes, featuring our patented SFC Mighty Grip outsole and water-resistant full grain leather, can take you anywhere with confidence. The lightweight flexible midsole and cushioned insoles provide hours of comfort, while the steel shank adds needed support. The rubber heel measures 3.175 cm.

WOMEN'S: 3608 Black
4–8 (37–42)



Aristocrat II

This polished oxford promotes your look and level of comfort.

Move through every step of your day with confidence. Smooth full grain leather sets an executive tone as the shock-absorbing SFC Mighty Grip outsole keeps you safe on your feet. Built with a steel shank for arch support and removable cushioned insoles, these shoes will help you navigate your way through any spill on any surface.

MEN'S: 1010 Black
5-12 (38-47)



Executive Wing-Tip

A tried-and-true classic that keeps up with your non-stop career. Start every day running in this water-resistant, full grain leather retro style. Our legendary slip-resistant, shock-absorbing outsole keeps you going, and removable insoles and padded ankle will help you stay comfortable. The steel shank provides arch support.

MEN'S: 1006 Black
5-12 (38-47)

Morgan

Our modern, European style slip-on makes sure you don't slip up.

Focus on your work; we'll take care of your feet with a business-minded look and our incredible slip-resistant, shock-absorbing outsole. This sleek, water-resistant leather shoe is designed for endless hours on your feet and includes removable insoles and a supportive steel shank. Elastic goring ensures a great fit.

MEN'S: 1021 Black
5-12 (38-47)



GET THE SHOE THAT GRIPS



work

**“Shoes For Crews®
performs better
than all other footwear”**

Tony C.
*Health & Safety Officer
PDM*

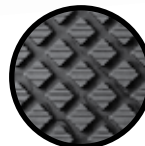


Commander – Steel Toe (S2)

Take charge with this comfortable yet rugged steel toe shoe.

This versatile safety shoe can take you from the office to the work site with confidence. Reinforced insoles add durability. Water-resistant full grain leather is paired with our exclusive SFC Mighty Grip slip-resistant outsole and a steel toe meeting EN ISO 20345 standards.

MEN'S: 5257 Black
3-13 (36-48)



Patented 7mm SFCV
Anti-Clogging & Anti-Bacterial
Slip-Resistant Outsole

Harrier – Steel Toe (S1)

Sporty athletic appeal with tough industrial strength.

This popular style provides the safety and protection of a steel toe that meets EN ISO 20345 standards and includes our patented SFC Mighty Grip slip-resistant outsole. Removable cushioned insoles and a padded collar add hours of comfort.

MEN'S: 5258 Black

5–13 (38–48)

WOMEN'S: 6258 Black

3–9 (36–43)



Safety Footwear Specifications EN ISO 20345

SB Basic Requirements for safety footwear met

S1 Basic requirements plus closed and energy absorbing seat region, and antistatic

S2 as S1 plus water penetration/absorption

S3 as S2 plus sole penetration resistance and cleated outsole

P Penetration resistance

C Conductive

A Antistatic

HI Insulating against heat

CI Insulating against cold

E Energy absorbing seat region

WRU Uppers resistant to water penetration/absorption

HRO Outsole resistant to hot contact



GET THE SHOE THAT GRIPS |

Leisure – Non-Metallic Safety Toe (S3)

The safety of a steel toe with the convenience of composite material.

This water-resistant, full grain leather work boot features our exclusive SFC Mighty Grip slip-resistant outsole and composite safety toe, which passes easily through metal detectors. Penetration resistance and a cleated sole add to the hard-working power of this boot.

MEN'S AND WOMEN'S: 5050 Black
3–13 (36–48)



We beat slip-resistant standards by over 100%!

See page 11 for Independent Lab Test Results



Eagle – Non-Metallic Safety Toe (S3)

Stay quick and agile on your feet with this rugged design.

This boot will literally wrap you in protection – from our exclusive SFC Mighty Grip slip-resistant outsole, to the composite safety toe to the puncture resistant footbed. Water resistant full grain leather will stand up to whatever the day may bring.

MEN'S AND WOMEN'S: 5052 Black
3–13 (36–48)

Farrell – Steel Toe (S2)

Approach any job with confidence in this rugged style.

The full grain leather Farrell is water-resistant and features our patented SFC Mighty Grip slip-resistant outsole. Extra padding around the collar provides both comfort and ankle support with reinforced insole for added durability. Conforms to EN ISO 20345 standards.

MEN'S: 5259 Black, 5260 Brown
5–13 (38–48)



Patented 7mm SFC V
Anti-Clogging & Anti-Bacterial
Slip-Resistant Outsole



Icon – Non-Metallic Safety Toe (S3)

Be a safety Icon in this durable work boot.

Water-resistant full grain leather stands up to the toughest jobs, while our patented SFC Mighty Grip slip-resistant outsole stands up to most slippery situations. Features a composite safety toe that meets EN ISO 20345 standards.

MEN'S AND WOMEN'S: 5051 Black
3–13 (36–48)



GET THE SHOE THAT GRIPS

Shoes that work as hard as you!



Arctic – Steel Toe (S1)

Protect yourself from the elements with this hard-working style.

Not only does the Arctic keep you safe on your feet with our exclusive SFC Mighty Grip slip-resistant outsole, but it also features anti-clogging, anti-bacterial properties to protect you from your environment. Made with water-resistant full grain leather.

MEN'S AND WOMEN'S:
5256 Black, 5254 White
3–13 (36–48)



Patented 7mm SFC V
Anti-Clogging & Anti-Bacterial
Slip-Resistant Outsole



Neo – Steel Toe (S1P)

Comfort and safety combine in this rugged boot.

Durable, water-resistant full grain leather boot is puncture resistant. Our exclusive SFC Mighty Grip outsole keeps you safe from slips and spills and the steel toe meets EN ISO 20345 standards.

MEN'S AND WOMEN'S: 5255 Black
3–13 (36–48)



Alaskan – Steel Toe (S1)

Comfort and style come together in this durable work boot.

This full grain leather work boot also features anti-bacterial properties. The exclusive SFC Mighty Grip slip-resistant outsole will keep you safe while the removable cushioned insoles will keep you comfortable.

MEN'S AND WOMEN'S: 5253 White
3–13 (36–48)



Patented 7mm SFC V
Anti-Clogging & Anti-Bacterial
Slip-Resistant Outsole



Guardian – Steel Toe (SB E WRU)

Walk right through the biggest, deepest messes without missing a beat.

Our 40.6 cm waterproof, anti-fatigue boot with removable cushioned insoles will help you walk or stand in just about anything – comfortably. Features our exclusive SFC Mighty Grip enhanced slip-resistant outsole with extra wide channels and a steel toe that meets EN ISO 20345 standards. The mold-injected unibody rubber construction also has a reinforced heel and toe, and the outsole and inner boot lining are anti-bacterial.

MEN'S AND WOMEN'S: 2007 White

4–13 (37–48)

MEN'S AND WOMEN'S: 2008 Green

4–13 (37–48)



Patented 7mm SFC V Anti-Clogging & Anti-Bacterial Slip-Resistant Outsole

new Available in October

SFC Heat-Shield – Soft Toe (SB E WRU)

Our heat resistant, waterproof boot is perfect for fryer maintenance

Heat resistant up to 250°C for up to 40 minutes* according to EN ISO 15090 heat isolation standards, our 40.6 cm injection molded unibody rubber boot safely protects you from hot grease splatters. Navigate safely with our exclusive SFC Mighty Grip enhanced slip-resistant outsole that meets EN ISO 13287 standards. Both outer and inner boot are anti-bacterial.

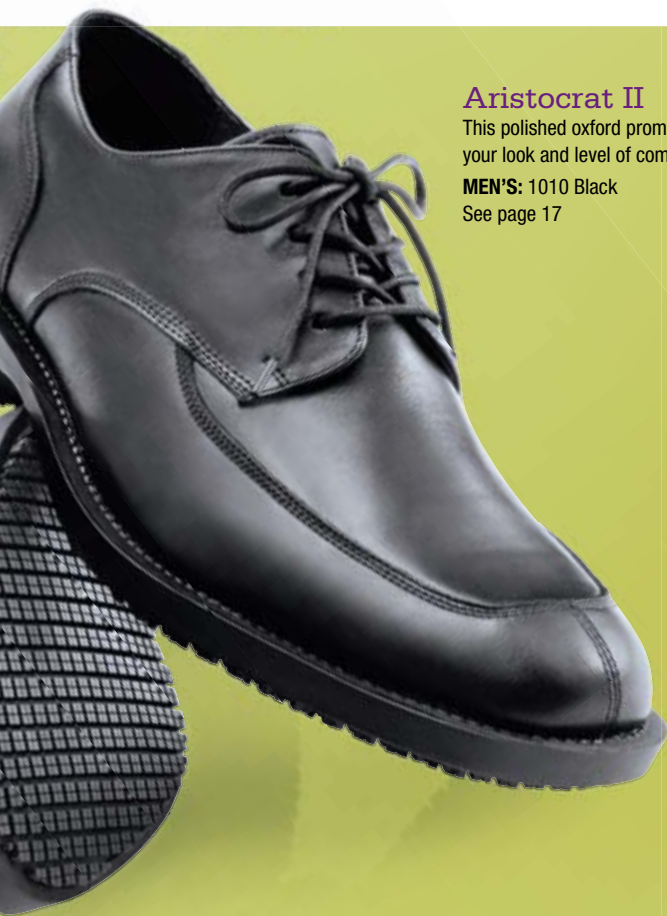
*Source TUV Laboratories.

MEN'S AND WOMEN'S: 2009 Black

4–13 (37–48)



GET THE SHOE THAT GRIPS



Aristocrat II

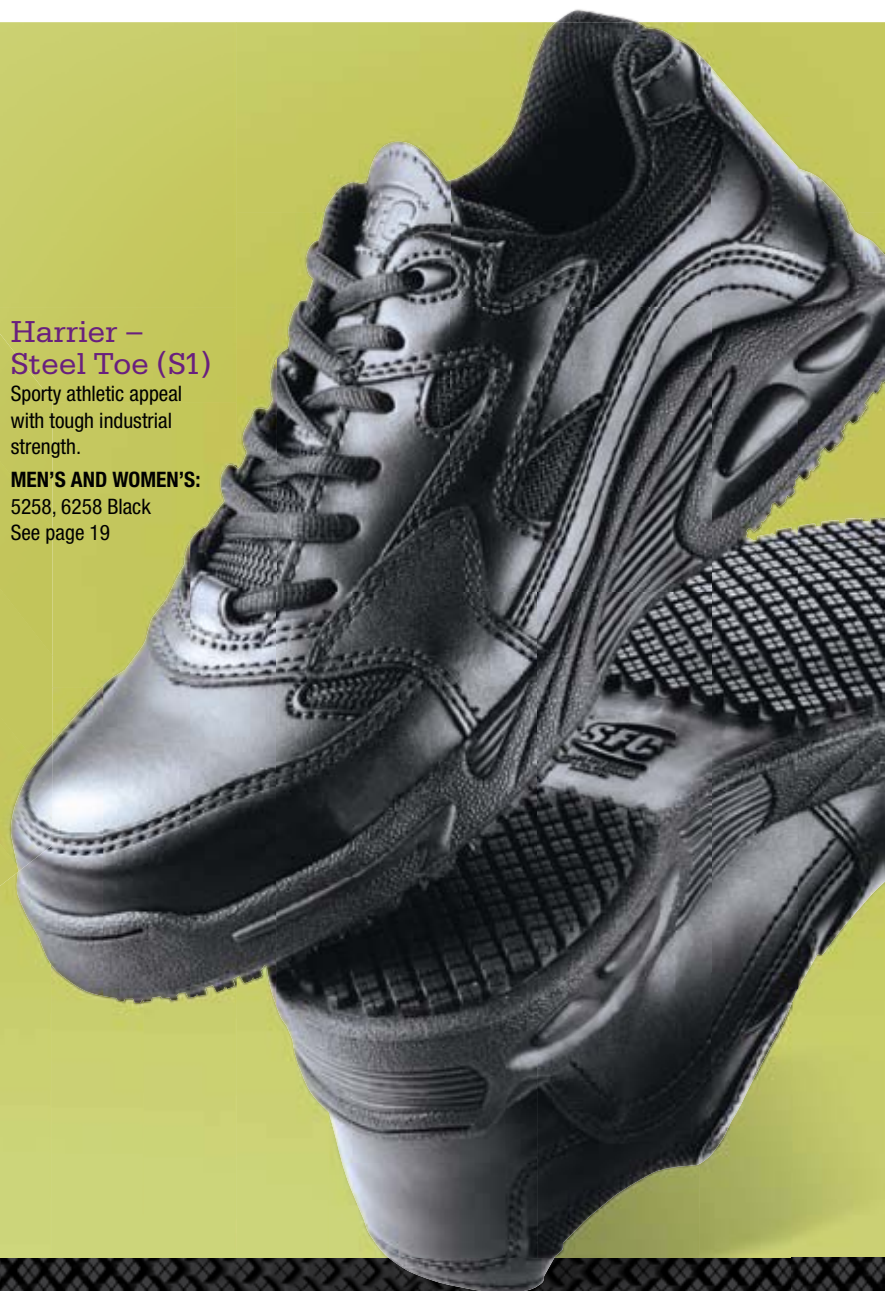
This polished oxford promotes your look and level of comfort

MEN'S: 1010 Black
See page 17

**Harrier –
Steel Toe (S1)**

Sporty athletic appeal with tough industrial strength.

MEN'S AND WOMEN'S:
5258, 6258 Black
See page 19



Autumn 2010