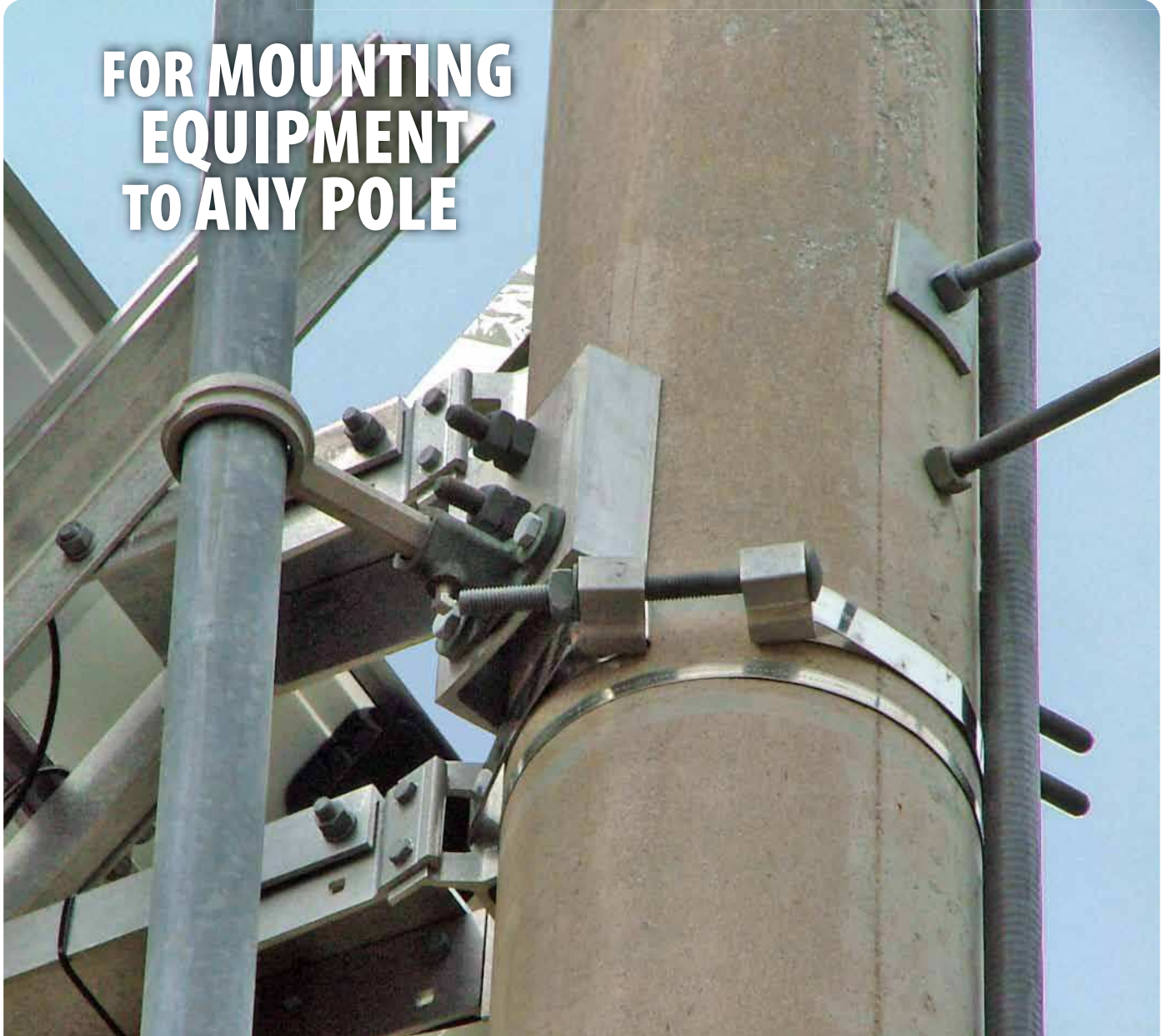




BOLT-A-BAND CATALOG

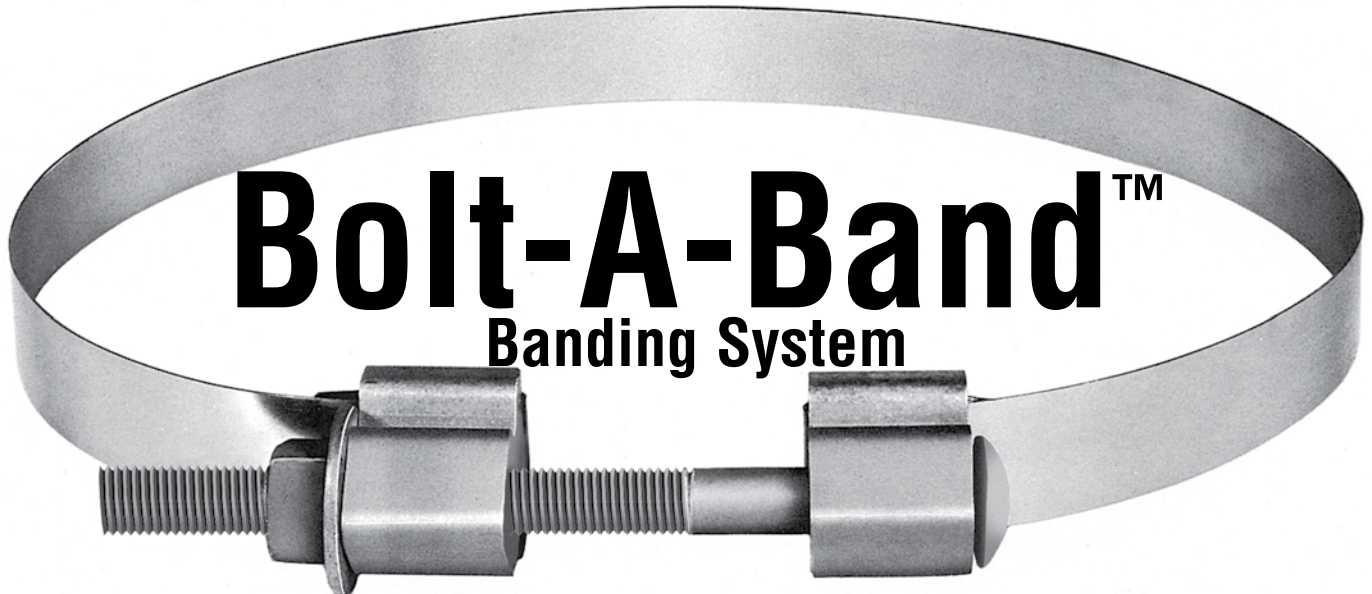
**FOR MOUNTING
EQUIPMENT
TO ANY POLE**





ALUMA-FORM®

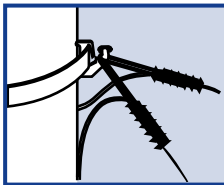
BOLT-A-BAND



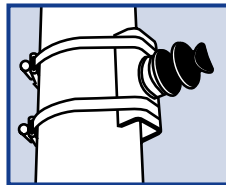
Bolt-A-Band™ Banding System

For Mounting Equipment on Most Steel, Wood, or Concrete Poles

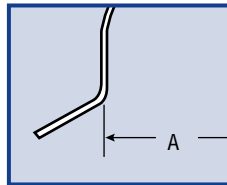
Bolt-A-Band™ lets you mount equipment on round, square or irregular shaped poles without drilling holes. Bolt-A-Band™ features a pre-cut, high quality stainless steel band with accompanying installation hardware. Adjusts easily to fit most any size pole. Installs in just minutes with no special tools required. Use it as shown, for equipment mounting... or create your own applications! Call Aluma-Form inside sales for more information.



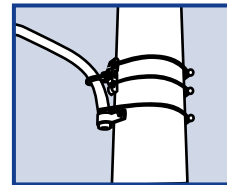
Banded Service Drop



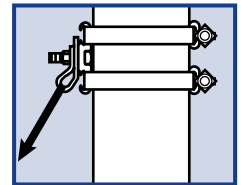
Mounting Post Insulator



Conduit or U-Guard



Lighting Brackets

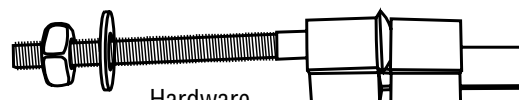
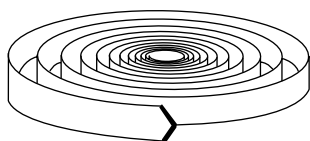
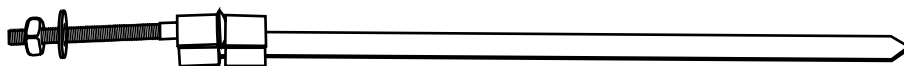


Guy Attachment

How to Select Proper Size

Band Width – Bolt-A-Band™ is available in 3/4" and 1 1/4" band widths and many lengths for mounting a variety of equipment. Generally, use 3/4" band for lighter loads (cabinets, telephone drops, U-Guards, co-axial cable, etc.), and 1 1/4" band for high tension loads.

Band Length – Proper length is easily determined by placing equipment to be mounted against pole or structure at mounting position. Measure total length needed around structure, add six (6) inches and round up to next standard length to determine correct length to order. Installation instructions are always included with each Bolt-A-Band™ order.



Hardware

Fixed Retainer Extrusion Sliding Retainer Extrusion

STANDARD LENGTH SINGLE BAND

Pre-Cut Extrusions Bands	CATALOG #	WEIGHT/EA.	STD. CARTON	HARDWARE	LENGTH	BAND
	BAB-3836	.75 lb.	24	3/8"	36"	3/4"
	BAB-3840	.80 lb.	24	3/8"	40"	3/4"
	BAB-3848	.85 lb.	24	3/8"	48"	3/4"
	BAB-3860	.90 lb.	24	3/8"	60"	3/4"
	BAB-3872	.98 lb.	24	3/8"	72"	3/4"
	BAB-3884	1.10 lbs.	24	3/8"	84"	3/4"
	BAB-5836	1.80 lbs.	24	5/8"	36"	1 1/4"
	BAB-5840	1.85 lbs.	24	5/8"	40"	1 1/4"
	BAB-5848	1.95 lbs.	24	5/8"	48"	1 1/4"
	BAB-5860	2.10 lbs.	24	5/8"	60"	1 1/4"
	BAB-5872	2.30 lbs.	24	5/8"	72"	1 1/4"
	BAB-5884	2.50 lbs.	24	5/8"	84"	1 1/4"

SPECIFICATIONS

Stainless Steel Band – Type 201 annealed Stainless Steel with minimum tensile of 95,000 P.S.I., and minimum yield of 45,000 P.S.I. Furnished in sizes of .030" thickness x 3/4" width and .044" thickness x 1 1/4" width.

Aluminum Hardware Extrusions – 6061-T6 Aluminum Alloy. This alloy conforms to ASTM B 221. A minimum tensile strength 38,000 P.S.I., and minimum yield strength of 35,000 P.S.I.

Carriage Bolt – High strength Grade 5 carriage bolt (ASTM A-449), furnished in 3/8" x 6" and 5/8" x 8" sizes.

STANDARD 100' LENGTH BANDS

CATALOG #	WEIGHT EACH	STD. CARTON	HARDWARE	LENGTH	BAND
3/4-201-SSB-100	8.00 lbs.	1	3/8"	100'	3/4"
1 1/4-201-SSB-100	19.00 lbs.	1	5/8"	100'	1 1/4"

BUCKLES FOR 100' BANDS

CATALOG #	WEIGHT EACH	STD. CARTON
BAB 38	.5 lbs.	24
BAB 58	1.25 lbs.	24

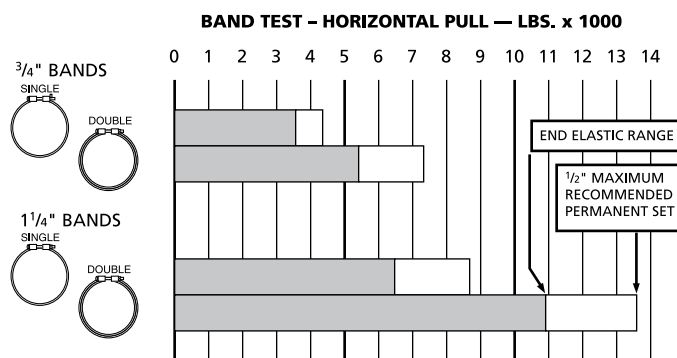
STANDARD LENGTH DOUBLE BAND

CATALOG #	WEIGHT/EA.	STD. CARTON	HARDWARE	LENGTH	BAND
BAB-5836-2	3.50 lb.	24	5/8"	36"	1 1/4"
BAB-5848-2	4.00 lb.	24	5/8"	48"	1 1/4"
BAB-5888-2	7.50 lb.	24	5/8"	88"	1 1/4"

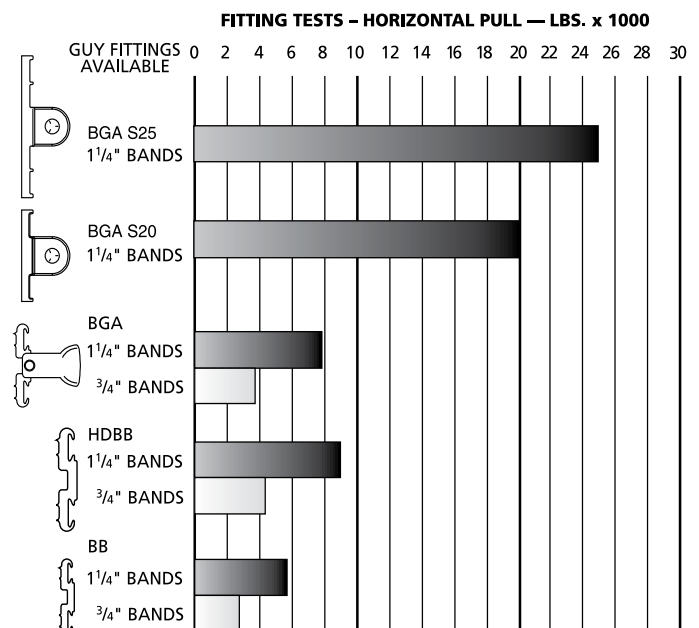
BANDING STRENGTH TESTS

MAXIMUM BAND CAPACITY

These tests were conducted with special large steel fittings to illustrate the maximum recommended loadings of the stainless steel bands. Aluminum alloy fittings such as the BGA, HDBB, or BB are generally weaker than these values. For stronger hardware, contact the factory.

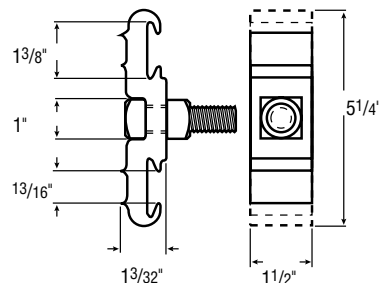


BAND STRENGTH WITH ALUMINUM OR STEEL ALLOY FITTINGS



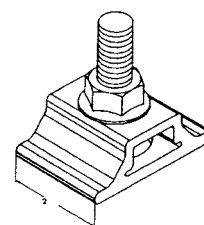
ALL PURPOSE MTG. BRACKET (LOCATES 5/8" BOLT)

CATALOG #	WEIGHT	STD. CARTON	DESCRIPTION
BB-1511-H	.60 lb.	24	Light Duty Mount with Standard, 5/8" x 2" Bolt.
HDBB-1511-H	.85 lb.	24	Heavy Duty Mount with Standard, 5/8" x 2" Bolt.
HDBB-1511-H3H	1.00 lb.	24	Heavy Duty Mount with Grade 5, 5/8" x 3" Bolt.
HDBB-1511-H3.5H	.96 lb.	24	Heavy Duty Mount with Grade 5, 5/8" x 3 1/2" Bolt.
BB-211-SB-2	.586 lb.	24	3/4" Band Light Duty Mount with standard 5/8" x 2" Bolt.



Mounting Bracket (HDBB Series shown)

Attaches with 1 1/4" Band



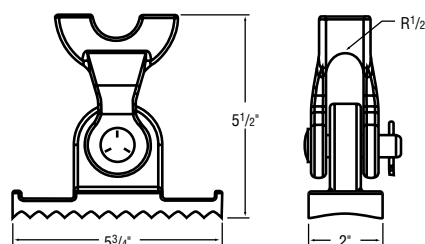
BB-211-SB-2

BANDED GUY ATTACHMENT WITH CLEVIS

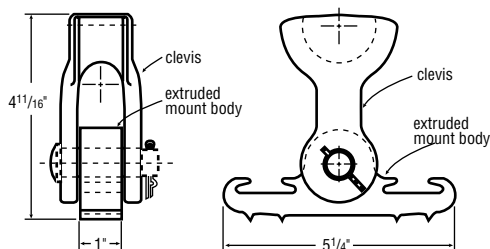
CATALOG #	WEIGHT /EA.	STD. CARTON	DESCRIPTION
BGA-100	1.50 lbs.	24	Regular Duty Banded Guy Attachment with Clevis.
* BGA-S20	2.60 lbs.	24	Heavy Duty Banded Guy Attachment with Clevis.
* BGA-S25	4.259 lbs.	24	Extra Heavy Duty Banded Guy Attachment with Clevis.

Attaches with 1 1/4" Band

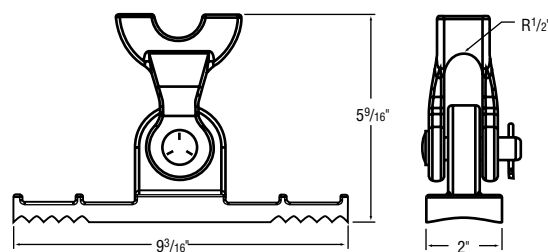
*Double thickness bands must be used for these applications.



BGA-S20



BGA-100

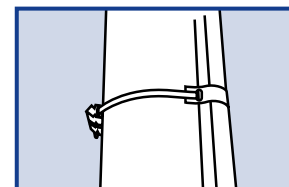
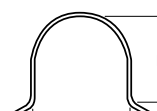


BGA-S25

CONDUIT AND U-GUARD STRAPS

CATALOG #	WEIGHT /EA.	STD. CARTON	DESCRIPTION		
			FOR	A	B
BST-1	.07 lbs.	24	1"	1 6/19"	1 6/19"
BST-2	.11 lbs.	24	2"	2 3/8"	2 3/8"
BST-3	.15 lbs.	24	3"	3 1/2"	3 1/2"
BST-4	.17 lbs.	24	4"	4 1/2"	4 3/8"
BST-5	.23 lbs.	24	5"	5 9/16"	5 7/16"
BST-6	.27 lbs.	24	6"	6 5/8"	6 1/2"

Attaches with 3/4" Band



Conduit and U-Guard Straps



ALUMA-FORM®

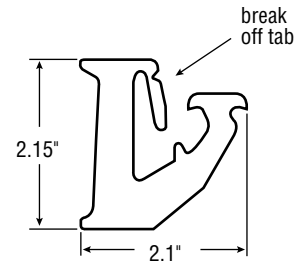
BOLT-A-BAND

HARDWARE

BANDED SERVICE DROP ATTACHMENT

CATALOG #	WEIGHT /EA.	STD. CARTON	DESCRIPTION
BSD-38	.082 lbs.	50	Banded Service Drop Maximum working load 1,000 lbs.

Attaches with 3/4" or 1 1/4" Band

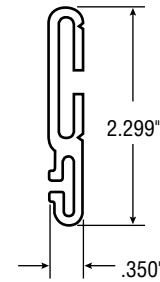


Banded Service Drop Attachment

BANDED CABLE TIE RETAINER

CATALOG #	WEIGHT /EA.	STD. CARTON	DESCRIPTION
CTR	.016 lbs.	100	Banded Cable Tie Retainer for use with either 3/4" or 1 1/4" Band.

For use with 3/4" or 1 1/4" Band

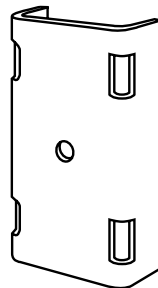


Banded Cable Tie Retainer

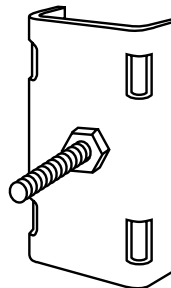
GENERAL PURPOSE MOUNT

CATALOG #	WEIGHT /EA.	STD. CARTON	DESCRIPTION
D-4080	6.5 lbs.	5	Mounting bracket of 3/4" Galvanized Steel, 10" x 5" formed channel with 2 1/2" legs. 13/16" mounting hole.
D-4080-BS1	7.26 lbs.	5	10" x 5" Mounting bracket with 5/8" carriage bolt
D-4080-BS2	10.56 lbs.	5	14" x 5" Mounting bracket with 2 5/8" carriage bolts

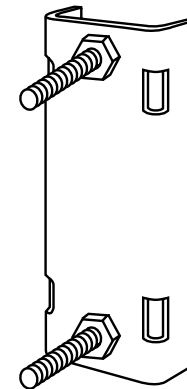
Attaches with 1 1/4" Band



General Purpose Mount D-4080



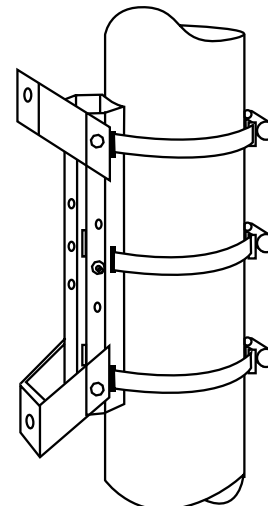
Mount D-4080-BS1



Mount D-4080-BS2

TRANSFORMER MOUNTING BRACKET

CATALOG #	WEIGHT /EA.	STD. CARTON	DESCRIPTION
BB-5M1-6LB	9.3 lbs.	5	Aluminum transformer bracket Adjustable to 12" or 24" lug spacing



ALUMA-FORM, INC.



ALUMA-FORM®

Aluma-Form, Inc.

3625 Old Getwell Road
Memphis, TN 38118
P.O. Box 18555 • Memphis, TN 38181-0555
Phone 901-362-0100
Fax 901-794-9515

www.alumaform.com

©2011 Aluma-Form, Inc.