



HOOFBEATS

DECEMBER 2015



Christmas Party Dec 12th 6:00pm

Capitol Riders Chapter, BCHW Officers for 2015

Laura Shillam - President
Peggy Tucker - Vice President
Dean Hartman - Treasurer
Chris Enrico - Secretary
Karen Johnson - Director
Deb Hall - Alt. Director

Chris Enrico - Newsletter
Chris Enrico - Web
Chris Enrico - Legislative
vacant - Membership
Chris Enrico - Communications
Carrie Russell - Rides
Mickie Hattrup - Rides
Peggy Tucker - Work Parties
vacant - Social
Peggy Tucker - Hoofprints

Capitol Riders Chapter, BCHW Mission :

1. To perpetuate the common sense use and enjoyment of horses in America's back country and wilderness.
2. To work to insure that public lands remain open to recreational stock use.
3. To assist the various government and private agencies in their maintenance and management of said resource.
4. To educate, encourage and solicit active participation in the wise use of the back country resource by horsemen and the general public commensurate with our heritage.
5. To foster and encourage the formation of new chapters in the state organization.

Capitol Riders Chapter, BCHW

www.capitolriders.org (with a link to our Facebook page)
Meet monthly at the Littlerock firehall, 10828 Littlerock Road SW (larger of the two meeting rooms). Please verify the meeting by either going to the chapter web site and the Events page, or call 360-459-4759.

The next general meeting is scheduled for January 5th, 7:00 pm, at the Littlerock Fire Department (West Thurston Regional Fire Authority, Station #1-2), 10828 Littlerock Road SW, Olympia, WA 98512. (when it is dark look for the bright red reader board)

In the meantime we have our annual Christmas party scheduled for December 12th at Rob Keyser's barn, 12641 La France Rd SW, Olympia (otherwise known locally as Littlerock)

Officer Elections -

The positions of president, vice-president, secretary, treasurer, and director have been filled. Once again Laura Shillam is president, Peggy Tucker continues as vice president, Dean Hartman is still treasurer, Chris Enrico continues on as secretary, and Karen Johnson is once again director.

Speaker at the November meeting - We thank both Connie Patterson and Maggie Bell-Mckinnon of Hooved Animal Rescue of Thurston County for attending and telling us more about the organization.

From your President -

November weather has impacted our riding a bit but that just means more time to work on our horsemanship skills closer to home. I am working on softness to the bit and lots of backing to get one of my guys using his hindquarters more.

Deb, Cindy and I have decided to go to Arizona in the spring to audit a 5 day Harry Whitney clinic. He has a bit different approach to get the same things but says he works with the horses view in mind.

I have an offer of a presentation from a camping and packing company in Tacoma to share at a meeting and wondering how people feel about that. He says he will make it fun and interesting.

I hope you all get some horse time this holiday season and enjoy family and friends. See you at the Christmas Party. Should be double the fun as Oakland Bay Chapter is joining us!!!!

Thanks , Laura

Please continue to record any volunteer hours and get them to Deb Hall on a consistent basis.

Newsletter - Still looking for your bios and articles. **YOU** make the newsletter what it is. I **cannot** do it alone!

Do you have a favorite campsite and trail system that you know very well and would like to share with others? Are you willing to host, guide and feed them? How about creating a "Trip for ___ to ___ for ___ days/nights" and donating it to the 2016 BCHW Rendezvous Auction??? Contact Auction Chair Kim E Merrick on how to put a package together! Rendezvous is only 4 months away - March 18-20. Help support **YOUR organization** - and make new friends doing it! Kim E Merrick <eloise55@gmail.com>

Capitol Riders of BCHW General Meeting

**Littlerock Firehall, 10828 Littlerock Road SW, Olympia, WA 98512
October 6, 2015**

Meeting called to order by President Laura Shillam 7:04 pm.

Twelve people were in attendance that included two guests (Connie Patterson and Maggie Bell-Mckinnon of Hooved Animal Rescue of Thurston County)

October minutes were approved as published in the newsletter.

Treasurer's Report – Dean Hartman

Dean told the group that Capitol Riders has \$xxx in the checking account and \$xxx in savings.

Newsletter – Chris Enrico

Chris said there is nothing new with the newsletter but he does want your biographies and articles.

Web site – Chris Enrico

Chris said there is nothing new with the web site. He is continuing work to update links on the horse camp information page. The mobile site is a ways off yet.

Legislative – Chris Enrico

Chris told the group that he sent out an action alert via email the night before asking members to send an email (or call) your US representative. Ask them to please vote AGAINST Amendment 69 and amendment 158 in the Surface Transportation Act of 2015 HR 3763. These will either be considered today or tomorrow. These amendments will kill

Currently Scheduled Events - partial for 2015

November

30 - Capitol Forest closes to Horses (Equine Loop open)

December

4-5 - Equine Trails Sports,

4 - BCHW, USFS & State Land Managers - Ellensburg -- all welcome to attend

5 - 4th QTR BCHW Board of Directors meeting, Ellensburg, members can attend this as well keeping in mind that you simply watch. (You may attend any board meeting.)

12- Chapter Christmas Party, Littlerock Barn with Oakland Bay chapter members (this will be FUN!), 6 pm.

13 - National Day of the Horse

RTP, the competitive grant fund that has paid for our BCHW trail maintenance and Leave No Trace grants. (*WE DID IT! These amendments did not make it!*)

Director Report – Karen Johnson

Chris Enrico did not get anything from Karen Johnson to report.

Work Parties – Peggy Tucker

Peggy told the group she has a work party scheduled for November 21st at Mima Trailhead, 10 am. We will clean the campground for the winter. Peggy takes the manure to her place. (*not heard if this event took place, There were no emails about it*)

Hoofprints – Peggy Tucker

Peggy asked members to turn in their paperwork tonight. You can email Peggy your miles. Sue Koch asked when we can sign up for the program and was told anytime between now and next October 31st.

Volunteer Hours – Deb Hall

Deb not present.

Chapter Rides – Carrie Russell/Mickie Hatstrup

Carrie Russell not present.

Sue Koch and Lori Ewing attended the wine ride. Sue said her friend Cathy's horse got kicked so they did not go to the wineries. There were lots of loose horses and the weather was nice.

Lori Ewing said the ride list will have a day ride and a campout once each month. Call her at 360-790-6220 or text with suggestions.

Discussion - Wenas, Nile, Kennedy Creek (weekend before Memorial Day), West Fork Humptulips, Kalama (avoid during the prize ride weekend *was July 25th, 2015*), Buck Creek, Elbe, JBLM Training Area 20, Scattercreek and Les Hilde were all mentioned.

Unfinished Business

None

New Business

A motion to elect the current officers was made, seconded and approved.

The BCHW Rendezvous committee is still looking for volunteers!

Peggy Tucker mentioned holding a horse clinic. It could be one day. Yelm could be a location, There is the trail challenge course in Rochester, Red Horse Ranch, Capitol Riders/Oakland Bay could host a clinic. Linda Morgan is working on one at the Evergreen Sportsman Club.

Peggy said that Leave No Trace training is an April weekend and that she will go (was sick last time). She is hoping others will go as well. Dress warm!

For good of the chapter –

Chris Enrico said that the trail saw has been ordered (*and has now arrived*).

The Christmas party is December 12th, 6 pm.

Treats for January – Peggy Tucker volunteered.

Laura adjourned the meeting at 7:40 pm.

Respectfully submitted.

Chris Enrico

Capitol Riders Chapter BCHW for 2015

After the meeting was adjourned Hooved Animal Rescue began their presentation.

UNBRANDED coming to Centralia's Fox Theater again on 2/25/16! The movie is a documentary of four young men who adopt and train BLM mustangs and then ride them from Mexico to Canada over a several month period. The idea was to promote adoption of the mustangs, many thousands of which who wait for new homes in holding pens. Get your ticket at www.tugg.com/events/78804 - 50 more tickets need to be reserved in order to make this showing happen.

Also coming to Shelton at the Shelton Cinemas, 517 W Franklin St, Shelton on December 14 at 7:00 pm. Their phone number is

360-426-1000. This event IS NOT shown on the Tugg ticket web site! Funds might not be going to help the horses????

Membership renewal time is here (yes it is that time of year again). The application in the newsletter a few more pages in. I'm thinking you have seen it many times. Please fill it out and either bring it to a meeting or mail it to the address on the form with the appropriate number of dollar bills or a check written to "Capitol Riders BCHW". Your BCHW member number is on your Trailhead News mailing label. You should know your county AND legislative district. Some of you have sent in your renewals already. We thank you!

Riding on the John Wayne Trail

Hi Everyone,

We are settling into life in the Kittitas Valley. I am beginning to meet "horsie folks" and Ron is meeting new car club friends. There isn't an active BCHW chapter locally but I have joined Kittitas Valley Trail Riders which is a group of retired men and women who like to ride. They have rides twice weekly except during the winter when the weather is unpredictable. Recently, I attended a ride with them on a section of the John Wayne Trail from the Iron Horse trailhead in Easton.

The group of 10 of us left the small Easton community heading west on the JWT which is lined with pine and vine maple trees. It was a cool fall day so the maple leaves were at their brilliant red and yellow best. We soon came to a large metal bridge which passes over the current active railroad underneath. Our trail boss said that a train goes by every 45 minutes, so we were anxious to get across the bridge before we encountered a train passing below!

We had a bit of a time getting the first few horses to step onto the first metal plate, but after that others followed. We rode on and then encountered a bridge (wooden) that crossed the over the Yakima River. It was a lovely river canyon about 30 feet below. The trail follows the shoreline of Lake Easton (across the lake from the state park to the north). The lake was beautiful with the fall colored trees surrounding the shore.

As we went west the next obstacle was a railroad tunnel that passed through a rocky outcropping. Fortunately, it was a short tunnel and we could see light at the other end so not so scary for the horses to enter. When we got inside the tunnel the echoing sound of many hoofbeats did cause our horses to get a little nervous and speed up! All was well though and we made it through to the other side.

We rode on farther along the shoreline with beautiful views of the lake. Soon we could hear a train approaching and as the sound got louder the horses' ears perked up. As the train got closer we just stopped in a safe place and watched it go by. Although it was only about 200 feet away, the horses just watched and were on alert. It was just lucky that we weren't on the bridge over the track!!

The farther we rode west the clouds moved in and a slight wind came up, making it quite chilly. Some of us didn't anticipate it being 15 degrees cooler up there from the lower Kittitas Valley and didn't dress warmly enough, so we turned around and headed back.

It was a very pleasant ride with very beautiful surroundings on a brisk fall day. After we got back to the trailhead we loaded up and drove into Easton where we had lunch at the historic Turtle cafe. What a pleasant day!

Happy Trails!!

Karen Johnson



Lake Easton -
Note the railroad
tracks! That is the
active line!





Inside the tunnel



Capitol Riders Chapter BCHW
Oakland Bay Chapter BCHW

Christmas Party 2015

December 12th, 6 pm

Rob Keyser's barn, downtown Littlerock
12641 La France Rd SW
Olympia WA 98512

(La France Road is between the Chevron Mini-Mart and the Littlerock Saloon)

Ham with the remainder of the food to be supplied by attendees (it's a potluck)

Gift Exchange (gifts in the \$15-\$20 range please. This is not a "White Elephant" type exchange.)
Chocolate or alcohol you can't go wrong

Dress warm or stay by the woodstove (hey, it's a barn!)

Come prepared to have some fun



Capitol Forest Winter Closure - December 1, begins the winter equine limited trail access at Capitol Forest and is open again next May 1. Horseback riders are limited to logging roads and the Equine Loop. Parking available at Mima Trailhead and Campground. The bathroom in the TH is closed for replacement. The bathroom in the campground is open and serviced all winter.

Margaret McKenny Campground is currently closed for logging activity, but the TH will open in the next month or so for parking. See the map in this newsletter.

Chapter Christmas Party

For the first time ever, Capitol Riders AND Oakland Bay chapters are coming together for one big Christmas Party. It is anticipated that this will be one wild party!

If you need a ride - please call Chris at 360-459-4759.

Please dress warm as this is the upstairs of an old barn and barns are big spaces and hard to heat, especially the older ones. There is a large wood stove in the food area but the further away from the stove the cooler it gets.

So far as food, it's a potluck with ham provided. Liquids are good as are appetizers and side dishes. Eating utensils, plates and cups are provided. Bring a chair although there are a few.

For those without email, we typically run a list of who is bringing what around. Feel free to call Chris at the above number if you want to make sure you don't duplicate another dish. But if it is a great recipe then we'll want more of it. Getting something at the store works too.

If you don't feel you can make the stairs up to the upper floor of the barn we are here to assist you. We don't have an elevator but can get you up and down so you can enjoy the evening. Just let Chris know at the above phone number.

Please bring your spouses and friends. (especially those friends we can talk into joining in our fun, *I mean BCH*)

As for the gift exchange, something in the \$15-20 range is good (no white elephants or reused gifts please as we have had complaints from those who spent much time finding a gift and ended up with something they felt not so great. Candy and alcohol have proven popular. Books too.

At a previous meeting I forgot to put the chapter's picnic table on the agenda. The chapter purchased it at some point. It is a green plastic and metal folding table (folds flat) and is 6 feet long. It's the typical table with benches on either side and no supports to get in the way of sitting down. The reason for bringing it up is I want to know what the chapter wants to do with it. We have used it at garage sales (typically those at Joyce Nelson's). It is relatively heavy and takes two people to move around.

With the lightweight camp chairs we all seem to have, and lightweight folding tables, do we have a need to a heavy picnic table? Would someone want to haul it to a chapter campout and actually use it (when there are tables already on site?)

I (Chris) am willing to buy it from the chapter for say \$120 (new are \$200-\$170) and make it available for local use (Kennedy Creek fun ride as an example). If someone desires to see it I had picked it up and it is still in the back of my truck.

So, as I mentioned in the meeting minutes, the trail saw is here and looks good. No misspelling of "Rendezvous" although I guess when I first asked them to do it some years ago their first attempt was such a flub. You might be able to buy it at a good discount if they didn't toss it. (Outfitters Supply, Columbia Falls Montana 1-888-467-2256. Ask for catalog # WSC123 L and the flubbed scabbard.)

Hopefully all of you with BCHW membership, and as a result membership in BCHA, received a notice in the mail from BCHA having to do with the sale of our public lands. Jim McGarvey explained the current effort and is asking us to donate to the fight.

H.R. 1931, The Americans Land Act - Authorizes the Departments of the Interior and Agriculture, for each of FY2016-FY2021, to offer for competitive sale by auction to eligible entities 8% of the federal land managed by the Bureau of Land Management and 8% of the National Forest System land. Includes as an "eligible entity": (1) a U.S. citizen, or (2) a corporation or partnership created or organized in or under the laws of the United States. Requires the land to be sold to: (1) be configured to maximize marketability or achieve management objectives, and (2) include the mineral rights for not more than 50% of the total acreage if such inclusion is likely to maximize marketability. Requires proceeds to be deposited into the Highway Trust Fund. (<https://www.congress.gov/bill/114th-congress/house-bill/1931>)

The House Committee on Natural Resources is proposing the so called PARC Act, Protecting Americas Recreational and Conservation Act. A loud argument used for selling public lands is the amount of land currently owned by the government and the extent of deferred maintenance. Some of our western states have a majority of their lands as federal and it has long stuck in some's craw that they don't have much say in how the lands are managed.

If the lands are sold we know we will NEVER get them back. They are public lands, OUR lands. We, the American people!

More on BCHA's position on this and other land issues can be found at <http://www.bcha.org/public-lands/bills/>

BCHA makes it real easy on our pocketbooks and asks for a minimum of \$5 a month! See <http://www.bcha.org/donate5/>

We tell ourselves that we joined BCH for the camaraderie and the chance to ride trails with like minded folks. But we also have to face reality and sometimes fight for the right to ride those trails we hold so dear. Granted the lands in question won't affect us here in Washington State, but once it starts, will it stop? Is \$5 a month of your money going to BCHA too much to ask?

Come Join Us!

To join BCHW, complete this application, sign the liability release (all members **18 and over**), and enclose payment:

- **Please Print Legibly**
- **Chapter members**, turn application and payment in *to your Chapter Treasurer*. Make checks out to **Capitol Riders BCHW**.
- **Mail** application and payment to: Capitol Riders, ATTN: Chris Enrico, 4809 24th Ave SE, Lacey WA 98503



Member Info

☐ New Member ☐ Renewal – Membership number(s): _____

Adult's name(s): _____

Children's name(s): _____

Address: _____

City: _____ ST: _____ Zip: _____

Phone number: _____ E-mail: _____

Legislative district (if known): _____ County: _____

Check to opt out of mailed (hardcopy) newsletter: ☐ BCHW (Trailhead News) ☐ Chapter

STATE MEMBERSHIP

Basic Membership

- ☐ Single \$41.00
☐ Family \$54.00

Optional Membership (*includes family or single from above*)

- ☐ Contributing \$75.00
☐ Sustaining \$125.00
☐ Patron \$250.00
☐ Benefactor \$500.00
☐ Lifetime (Single) \$1200.00

☐ State dues paid online (attach receipt copy)

Additional State Donation \$ _____

State Subtotal \$ _____

CHAPTER MEMBERSHIP

All chapter members must also be a member of BCHW. However, BCHW dues only need to be paid **once** each year. Joining additional (secondary) chapters only requires paying chapter dues.

Chapter Name: **Capitol Riders**

Chapter Dues - Single (\$10) \$ _____
 Family (\$15) \$ _____

Additional Chapter Donation \$ _____

Chapter Subtotal \$ _____

Grand Total (State+Chapter) \$ _____

LIABILITY RELEASE & NOTICES

All ADULT members MUST sign! Adult's signature covers minor children.

Recognizing the fact that there is a potential for an accident wherever horse use is involved, which can cause injuries to horses, riders, and spectators, and also recognizing the fact that Backcountry Horsemen of Washington, Inc., including Chapters, officers, directors, or members, cannot always know the condition of trails or the experience levels of riders or horses taking part in trail rides or other BCHW events, I do hereby release and hold harmless the above named from any claim or right for damages which might occur to me, my minor children, or horses.

Signature: _____ Date: _____

Signature: _____ Date: _____

Signature: _____ Date: _____

Backcountry Horsemen of Washington (BCHW) is a public charity as defined in Internal Revenue Code Section 501(c) (3). Accordingly, membership dues paid to BCHW and a chapter may be treated as deductions characterized as "charitable contributions" when computing federal and state income tax obligations.

Sponsors

Tack Room Too



201 Lee St. SW
Olympia, WA 98501

360-357-4268 • tackroomtoo.com

Fine Quality Saddlery, Tack & Riding Apparel
Just off I-5, Tumwater Exit #102



CAPITAL BUSINESS MACHINES
TOMORROW'S SOLUTIONS FOR TODAY'S BUSINESS



Dean Hartman
Vice President of Operations
email: dhartman@cbm-wa.com

800-542-1066 Toll Free
253-572-4110 Tacoma
360-438-0969 Fax
3660 Pacific Ave SE • Olympia WA 98501

SHARP
Microsoft
SOLUTION PROVIDER

360-491-6000

Fun Ride Sponsors

DEL'S
FEED & FARM SUPPLY

Tommi Ferrer
Assistant Manager

phone: 360-943-5119
fax: 360-943-5136

del'sfarmsupply.com

7728 Old Hwy 99 SE
Olympia, WA 98581

stn4608@del'sfarmsupply.com

426-1643

HOME MEAT SERVICE



CUSTOM CUT AND RETAIL

Glenn Probst & Family
Owners

S.E.341 Taylor Rd
Shelton, WA 98584

Island Johnny



Portable Toilets

360-426-6697

J&I POWER EQUIPMENT INC. ESTABLISHED 1974

"Get Equipped, Get It Done, Save A Ton With J&I"

Olympia (360) 491-2022 x101
Yelm (360) 400-6000

LORI LONGNECKER
Employed 1977
lori@jaispe.com

3729 Pacific Avenue SE, Olympia, WA 98501
10415 Bold Hill Road SE, Yelm, WA 98597 • www.jaispe.com

CAPITAL BUSINESS MACHINES
TOMORROW'S SOLUTIONS FOR TODAY'S BUSINESS



Dean Hartman
Vice President of Operations
email: dhartman@cbm-wa.com

800-542-1066 Toll Free
253-572-4110 Tacoma
360-438-0969 Fax
3660 Pacific Ave SE • Olympia WA 98501

SHARP
Microsoft
SOLUTION PROVIDER

360-491-6000

KAUFMAN
CONSTRUCTION & DEVELOPMENT, INC.

JOHN KAUFMAN
PRESIDENT

360.491.5230 CELL 360.791.2670 FAX 491.5296
EMAIL: john@kaufmancd.com
VISIT US AT www.kaufmancd.com
7711 MARTIN WAY EAST OLYMPIA, WASHINGTON 98516
KAUFMANCD.COM



Ken's Automotive Repair
Electrical, Brakes, Tune-ups,
Clutches, Battery, Accessories

6627 Old Hwy 101
Olympia, WA 98502

(360) 867-0436

Kiperts
Korner Feed

Graig & Foxy Kinnaman | Owners

Ph: 360.352.3309
8438 Old Hwy 99 SE - Olympia, WA 98501

DARRELL McGREGOR
Manager



1621 Harrison Ave.
Centralia, WA 98531

Phone (360) 736-8261
Fax (360) 330-6272
Cell (360) 508-0679
dmcgregor@lincolncreeklumber.com

ACE Hardware


Madsen Family Cellars LLC
Hand-Crafted Fine Wines



Dana Madsen - Winemaker
Sandra Madsen - Potestato

2845 Marvin Road NE, Unit D
Olympia, WA 98505
Phone: 468-1286
<http://www.madsenfamilycellars.com>

Marchetti Wines



Specializing in Red Wines
with no added sulfites

Cheri Cassidy
cell 360-529-7434
360-339-4288

Visit our tasting room
New Callisto Building
118 5th Avenue SE • Olympia, Washington
cherimarchettiwines@gmail.com




SAM DESNER
HEAD DISTILLER

PH: 360.890.4927
C: 360.701.4085

2641 Willamette Dr NE, Suite D,
Lacey, WA 98516


Salishseaorganicliqueurs@gmail.com

Family owned
Tenino winery
featuring a variety of
hand crafted wines



Softest whites, smoky
reds & delicious
dessert wines.
Also featuring winebars

*Experience
the Creek*



360-264-(WINE) 9463
291 Sussex Ave. W., Tenino
www.scattercreekwinery.com

Thompson's Furniture
Gifts & Etc.



Featuring
Exceptional Gifts,
Home Inspirations
and
Distinctive Furnishings

360.357.6342
www.thompsonsfurnitureco.com

5407 S. Capitol Blvd.
Tumwater, WA 98501

Specializing in Hand Crafted Wines



Dan & Deana Ferris, Owners

19607 Bucola Hwy SE
Tenino, WA 98589
(360) 453-4999
deana@mill-lane.net
www.mill-lane.net
www.facebook.com/milllanewinery

Tasting Room Hours: Wed-Sun 11 am - 6 pm

**NORTHWEST
MOUNTAIN
WINERY**



RAY CURTIS
WINEMAKER

Tasting room open Fri-Sun Noon-5pm
2825 Marvin RD NE ste Q
Olympia WA 98516
nwmountainwine.com
raycurtis@nwmountainwine.com (360) 464-7125


NORTHWIND
Forest Consultants



northwindforest@comcast.net

P.O. Box 1346
Chehalis, WA 98532

Joe Staley 360-490-0333



**OLYMPIA
FARRIER
SUPPLY**

Ken & Max (Maxine) Floyd

1041 B 85th Ave SE
Olympia, WA 98501

Phone: (360) 786-8575
olyfarrier.com
olyfarrier@comcast.net

Olympic
Trailer & Truck Acc.

"Northwest's #1
Trailer Dealer"

(360) 357-3065
FAX (360) 459-1418
www.olympictrailer.com

7830 MARTIN WAY E
OLYMPIA, WA 98516

**PACKWOOD PROSPECTING
& MINING SUPPLIES, LLC**



TESORO, GARRETT & FISHER
METAL DETECTORS
GOLD PROSPECTING
EQUIPMENT & SUPPLIES

Keith & Shawna Hodges
12879 US Hwy 12, Packwood WA 98361
Packwoodprospecting@gmail.com
Phone 360-494-0503 Cell 360-742-4490

Ratcliff Farms, LLC 360-701-5695
RatcliffFarms@comcast.net



•Round bales & haylage
 •Naturally-raised beef

SANDSTONE DISTILLERY
www.sandstonedistillery.com
 842 Wright Rd SE
 Tumac, WA 98389
 (360) 239-7272
jahm@sandstonedistillery.com




JOHN BOURDON
 Owner, Distiller

SOUTH BAY AUTOMOTIVE, LLC
 COMPLETE AUTOMOTIVE REPAIR / FOREIGN • DOMESTIC

491-7826

3422 So. Bay Road NE • OLYMPIA, WA 98506

(Stottle) winery

Handcrafted, award winning, single vineyard wines, and elegant blends, made with passion and excellence.

Winery & Tasting Room
 2641 Willamette Dr. NE, Ste. C
 Lacey, WA 98516
 360-515-0356
Tastings & Tours:
 Wed - Sun 12 - 5

Hoodsport Tasting Room
 24180 Highway 101, Suite 8
 Hoodsport, WA 98548
 360-877-2247
 Summer: Wed - Sun 11 - 5
 Winter: Sat 11 - 5

Stottlewinery.com
facebook.com/stottlewinery1

Tack Room Too



201 Lee St. SW
 Olympia, WA 98501



360-357-4268 • tackroomtoo.com

Fine Quality Saddlery, Tack & Riding Apparel
 Just off I-5, Tumwater Exit #102

TAYLOR STATION
 RESTAURANT • LOUNGE

Open 7am Daily
 Banquet/Meeting Room
 Patio Garden Dining
 Full Service Lounge

Brett Hibberd 360-426-8501
 62 S.E. Lynch Road • Shelton, Washington 98584

English • Western • Health • Grooming Supplies • Gifts

T.L.C. Tack
 (360) 352-5681
 Fax: (360) 915-7170

9022 Old Hwy. 99 S.E. Mary Pehl
 Olympia, WA 98531 tlctackroom@comcast.net
 Facebook: T.L.C. Tack

TOWN & COUNTRY
 ROOFING

Rea Shincke Owner
troofing@hotmail.com
www.townandcountryroofingwa.com
 Lic. # TOWN0100802
 Phone: 360-704-7653 Fax: 360-704-7667

WALTER DAICON

Walter Daicon Wines
 Lloyd & Ann Anderson

50 S.E. Skopum Inlet Road, Shelton, WA 98584
winemaker@walterdaiconwines.com
 Phone 360-426-3913 Fax 360-426-0522

WORTH LAW Group

CYNTHIA S. WORTH
 Attorney at Law
 LL.M. in Taxation

8953 Littlelock Road SW
 Tumwater, WA • 98512
 (360) 753-0948 • Fax (360) 305-3021
cworth@worthlawgroup.com

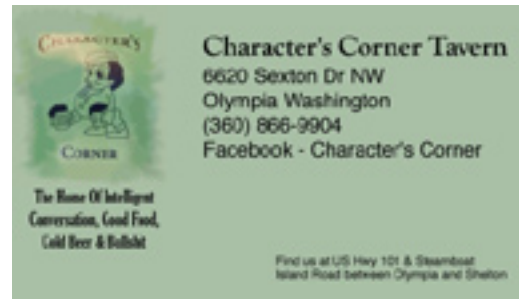
FOX FIRE

Outerwear & Clothing
 Serving you from Yelm

360-458-4111
 800-344-8225
sales@foxfireonline.com
www.foxfireonline.com

Cabela's
 WORLD'S FOREMOST OUTFITTER®

1600 Gateway Blvd. NE
 Lacey, WA 98516
 (360) 252-3500



The above 36 business cards (Fun Ride Sponsors) represent the Kennedy Creek Fun Ride (May 16, 2015) donors. Some donated cash, others donated prizes or services. Please express your appreciation by doing what business you can with them or by referring others.

On January 16th (a Saturday), Oakland Bay members will be getting together at Mike and Gayle Peterson's (Oakland Bay chapter members) place in Rochester. All are welcome to attend. Address is available on request (call Chris at 360-459-4759).

We will be starting the assembly of six wilderness toilets for the Cle Elum Ranger District to be placed sometime in the summer of 2016 somewhere in the Alpine Lakes Wilderness. These toilets are simple wooden boxes constructed of cedar. We have the lumber and hardware. This party will cut the lumber and we will assemble at least one toilet to be sure it all works as drawn on paper.

So yes, they are a simple wooden box you sit on out in the wilderness wide open. The intent is to concentrate use in certain areas and not have every user digging their own cat hole and leaving the tell-tale white flags showing.

Rather than spending money (chapter funds or grant money) on trail tools, bridge decking materials or hardware and such, we can also assist the land managers by constructing simple things like toilets, or permit boxes and kiosks. We can also provide funding for trail sign replacement.

This is a long term project just getting off the ground. At this point all we have is the request for six toilets. But we know the need is there as we've been out on the trails and have seen the missing or broken signs, the permit boxes falling apart, or sat on a creaking toilet.

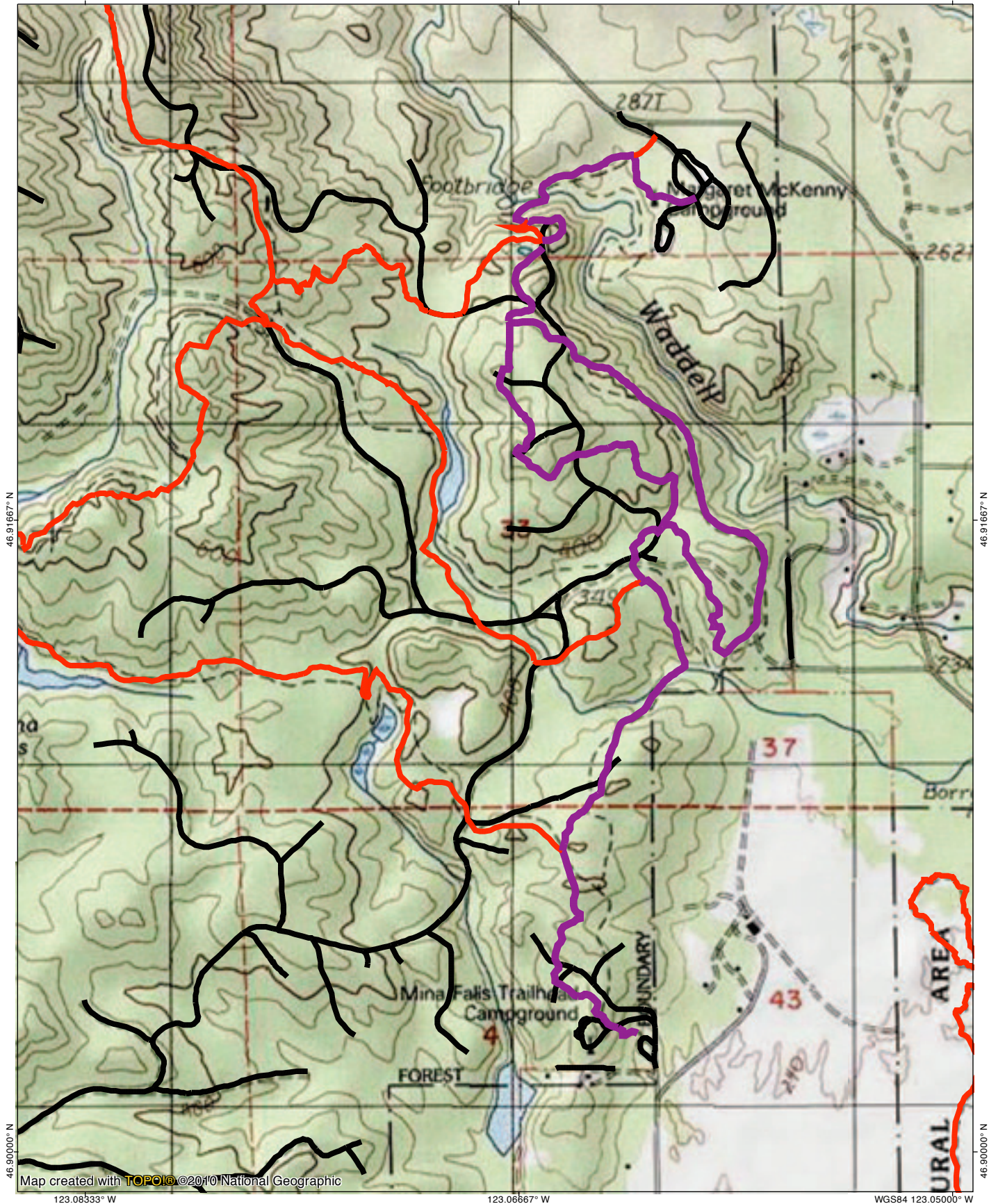
Oakland Bay chapter jumped at the chance to do this and were helped by a check from the BCHW LNT program. Any chapter or individual can do this although it's good to coordinate with each other so we don't ask specific land managers repeatedly what their needs are.

This is not the first such project by BCHW. Recently Grays Harbor Chapter built some permit boxes for the Quinault Ranger District. And some years ago Oakanogan Valley and Ferry County chapters constructed massive trail signs at several trailheads heading into the Pasayten Wilderness (one of Dave Swanberg's legacies).

123.08333° W

123.06667° W

WGS84 123.05000° W



46.91667° N

46.91667° N

46.90000° N

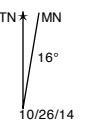
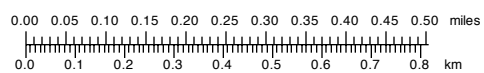
46.90000° N

Map created with TOPO! ©2010 National Geographic

123.08333° W

123.06667° W

WGS84 123.05000° W



This space for rent!

Ad Rates for your ad in both the web site and newsletter :
(per year)
Business card - \$25
1/4 page - \$48
1/2 page - \$72
Full page - \$100 (subject to board approval)
Business card or your production ready artwork.

This space for rent!

Chris Enrico
4809 24th Ave SE
Lacey WA 98503

Capitol Riders
<http://capitolriders.org>

