



What do you get for a man who has everything? A billionaire, a grandmaster, father to a young daughter (Melody Amber), sponsor of OTB chess events such as the Ladies vs. Veterans events and, yes, the Melody Amber tournaments? What can you get such a man whose correspondence chess rating at 2754 ranks him number one in the world and whose rating in the next rating list will be 2773, surpassing Hans Berliner's long-standing record of 2765? How about the championship of the world?

Joop J. van Oosterom of the Netherlands has won the 18th World Championship with an undefeated 11-3 score. Success has come easily to van Oosterom. He was the Dutch cc champion in 1980-1, placed second behind Gert Timmerman in the 15th World Championship at 11-4. In 1998-2001, he finished equal first and second (11½-2½) with OTB Grandmaster Curt Hansen in the Korning Memorial. In the 2002-4 ICCF 50 Years Jubilee Elite GM Tournament, Joop finished tied for first and second with GM Hans Elwert. Now Joop stands alone at the pinnacle, our new World Champion.

GAME OF THE MONTH

The way van Oosterom transforms a soggy kingside into a trim fighting unit is worth noting. It is the mark of the GM to impose harmony on the uncoordinated.

KING'S INDIAN DEFENSE (E69)

W: Joop van Oosterom (2725)

B: Patrick Spitz (2548)

18th World Championship E-mail 2003

1 d4 Nf6 2 c4 g3 3 Bg2 4 Bg2 0-0 5 Nc3 d6 6 Nf3 Nbd7 7 0-0 e5 8 h3 c6 9 e4 exd4 10 Nxd4 Qb6 11 Nde2 Nc5

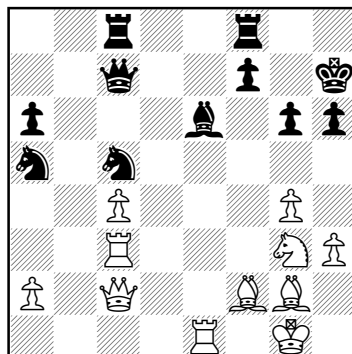
Nobody ever takes the d6-pawn, but apparently it could be digested safely. It seems worth a try.

12 b3 Re8

Black cannot take advantage of White's innovation as White wins after 12 ... Nfxe4 13 Nxe4 Nxe4 14 Bxe4 Bxa1 15 Be3 Qc7 16 Qxa1 Bxh3 17 Bg2.

13 Be3 Qc7 14 f3 a6 15 Rc1 Qe7 16 Od2 b5 17 Rfd1 Nb7 18 Bf2 h6

bx c4 22 bxc4 Nd7 23 Nd4 Rac8 24 f4 Ndc5 25 e5 dxe5 26 Nxc6 Qc7 27 Nxe5 Bxe5 28 fxe5 Qxe5 29 Rc3 Na5 30 Re1 Qc7 31 Qc2 Rf8 (diagram)



after 31 ... Rf8

With most of Black's pieces on the queenside, van Oosterom's attention has to be directed toward the weakened black kingside.

32 Nh5 f5 33 Bd5 gxh5 34 Bxe6 Nxe6 35 Rxe6 hxg4 36 hxg4 Qg7 37 Kh2

There is no salvation with 37 ... Qxg4 38 Re7+ Kg8 39 Rg3 or 37 ... Nc6 38 gxf5 Rf6 39 Qe4.

37 ... Rc6 38 gxf5 Rxe6 39 fxe6+ Qg6 40 Qxg6+ Kxg6 41 Rg3+ Kh5 42 e7 Re8 43 Bc5 Nc6 44 Re3, Black resigns.

• The race for second and third in the 18th World Championship is still open. America's own Daniel Fleetwood (2546) currently stands at 5-5 (+1 =8 -1) with four games remaining. The GM norm is 7-7 — I wish you good skill, Daniel. Get that norm!

• For those of you who can still see humor in chess, you might want to check out John Knudsen's "Chessdude" at: www.correspondencechess.com/knudsen/dude_in

advances into enemy territory, chaos may rain down.

ENGLISH OPENING

[A20]

W: Vigfus Vigfusson (2272)

B: Robin Smith (2606)

ICCF 2003

1 c4 e5 2 g3 Nf6 3 Bg2 c6 4 d4 exd4 5 Qxd4 d5 6 cxd5 cxd5 7 Nf3 Nc6 8 Qa4 Bc5 9 0-0 0-0 10 Bg5 h6 11 Bxf6 Qxf6 12 Nc3 Be6 13 Rac1 Rfd8 14 e3 Bb6 15 Rfd1 Rac8 16 Rd2 d4 17 Ne4 Qe7 18 exd4 Bg4 19 Ne1 Ba5 20 Nc3 b5 21 Qxb5 Bxc3 22 bxc3 Nxd4 23 Rxd4 Rxd4 24 Nd3 Rdd8 25 Bf1 Be6 26 a4 Qa3 27 Qb4 Qxb4 28 Nxb4 a5 29 Nd3 Bb3 30 Nf4 g5 31 Nd3 Bxa4 32 c4 Rd4 33 Nb2 Bb3 34 c5 a4 35 Ba6 Rc7 36 Rc3 Ra7, White resigns.

Proof that a master's rating does not make you immune to an attack.

SICILIAN DEFENSE

(B96)

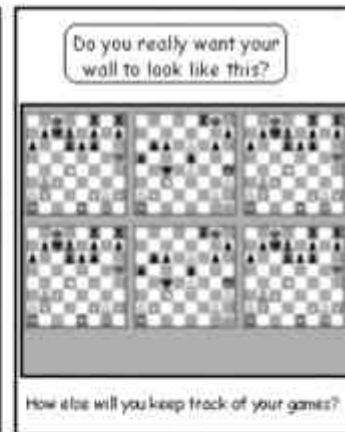
W: Rolando Rodriguez (1700)

B: William Jempty (2212)

2004 Golden Knights

1 e4 c5 2 Nf3 d6 3 d4 cxd4 4 Nxd4 Nf6 5 Nc3 a6 6 Bg5 e6 7 f4 b5 8 e5 dxe5 9 fxe5 Qc7 10 Qe2 Nfd7

CHESSDUDE



John Dowling plays 81 strong moves to bring down an opponent full of resistance.

BISHOP'S OPENING

W: John Dowling (2323)
B: Joseph Shipman (2312)

2001 Absolute

1 e4 e5 2 Bc4 Nf6 3 d3 c6 4 Nf3
d5 5 Bb3 Bd6 6 Nc3 Be6 7 Bg5
Nbd7 8 exd5 cxd5 9 Bxd5 Bxd5 10
Nxd5 Qa5+ 11 Nc3 Ba3 12 Qb1 e4
13 dxe4 Nxe4 14 0-0 Nfg5 15 Nfg5
Qxg5 16 bxa3 0-0-0 17 Nb5 Qc5 18
Qb4 Kb8 19 c4 b6 20 Rab1 a5 21
Qb3 Rhe8 22 Nc3 Ka7 23 Rfc1
Re6 24 Rd1 Qe7 25 Nb5+ Kb8 26
Qg3+ Ne5 27 Nd4 Red6 28 Nc6+
Rxc6 29 Rxd8+ Qxd8 30 Qxe5+
Qd6 31 Qxg7 Qg6 32 Qe5+ Ka7 33
Re1 Rxc4 34 Qe7+ Ka6 35 h3 Qf5
36 Qe2 Qc2 37 Qf3 Rc7 38 Qa8+
Ra7 39 Qd8 Rc7 40 g3 f5 41 Qa8+
Ra7 42 Qf3 Rc7 43 Kh2 Qxa2 44
Re5 f4 45 Qa8+ Ra7 46 Rxa5+
Kxa5 47 Qxa7+ Kb5 48 Qd7+ Ka5
49 Qf5+ Ka6 50 Qxf4 Qxa3 51 g4
Qe7 52 Qa4+ Kb7 53 Kg3 Qc7+

Albert Rothaus 2200
Kevin W. Mulloy 2200

CANDIDATE MASTERS

Walter J. Lewis 2006
Jeffrey Sellers 2003

Tournament Winners

JOHN COLLINS MEMORIAL CLASS

Ricardo Ruiz	04CC19	5 ½ - ½
Steve Douglas	04CC19	5 - 1
Brian Stewart	03CAB17	5 - 1
Thomas Delehanty	03CM30	4 ½ - 1 ½
Thomas Connelly	04CA06	5 ½ - ½

TROPHY QUAD TOURNAMENT

Frank Spooner SR.	03QCD16	6 - 0
Richard Zelinski	03QC34	6 - 0

54 Qf4 Qc2 55 Qf3+ Kc7 56 Qe3
Kb7 57 f4 b5 58 f5 b4 59 Kh4 b3
60 f6 b2 61 f7 b1Q 62 f8Q Qb5 63
Qf7+ Qc7 64 Qe4+ Kb6 65 Qxc7+
Kxc7 66 Qxh7+ Kb8 67 Qg8+ Kc7
68 Qf7+ Kd6 69 Qf6+ Kc7 70 g5
Qe8 71 g6 Qe4+ 72 Kg3 Qe3+ 73
Kg4 Qe2+ 74 Qf3 Qe6+ 75 Kg5
Qe5+ 76 Qf5 Qe7+ 77 Kh5 Qe2+
78 Kh6 Kb7 79 g7 Qc4 80 g8Q
Qxg8 81 Qh7+ Qxh7+ 82 Kxh7, 1-0.

tice have become more evenly balanced between how one wins and the hard fact of victory. For now in *Chess Life* the players who conduct scintillating games will receive the Hames Correspondence Game of the Year Awards. Resident postal editor Alex Dunne is the judge of a contest with prizes of \$100 for the best game by a master and \$100 for the best game by a non-master to appear in *Chess* is in the Mail during a given year. What better reason, then, to send your postal brilliancies to Alex Dunne?

You are invited to send me your comments, questions and correspondence games (with or without annotation). Because of the volume of mail, submissions cannot be returned, and personal replies are not possible.

For Correspondence Chess game results, time complaints, vacation notices, etc. mail them to: Alex Dunne, PO Box 367, Sayre, PA 18840 or e-mail: alex.dunne@cqservices.com

For Correspondence Chess tournament entries, these **MUST** be mailed to: U.S. Chess Federation, 3068 US Route 9W, Suite 200, New Windsor, NY 12553.



CHECK OUT USCF'S CORRESPONDENCE CHESS RATED EVENTS

USCF's 58th ANNUAL

2005 Open Correspondence Chess Golden Knights Championship
\$1,500 First Prize

(plus title of USCF's Golden Knights Champion and plaque)

• 2nd place \$800 • 3rd place \$600 • 4th place \$400 • 5th place \$200 • 6th thru 10th place \$100 each. **Entry fee: \$25.**

The entry deadline is November 30, 2005.

These USCF Correspondence Chess events are rated and open to all USCF members who reside on the North American continent, islands, or Hawaii, as well as those USCF members with an APO or FPO address. USCF members who reside outside of the North American continent are welcome to participate in e-mail events. Your USCF membership must remain current for the duration of the event, and entry fees must be paid in U.S. dollars. Those new to USCF Correspondence Chess, please estimate your strength: **Class A:** 1800-1999 (very strong); **Class B:** 1600-1799 (strong); **Class C:** 1400-1599 (intermediate); **Class D:** 1399 and below (beginner level). **Note:** Prize fund guaranteed (based on 400 entries) and will be increased or decreased proportionately per number of entries assigned.

CORRESPONDENCE CHESS MATCHES (TWO PLAYERS)

☛ **\$5 entry fee per person** with two, four or six game options.

WIN A CORRESPONDENCE CHESS TROPHY

☛ Four-player, double round-robin with class-level pairings. ☛ 1st place winner receives a trophy. ☛ **Entry fee: \$10.**

VICTOR PALCIAUSKAS PRIZE TOURNAMENTS

☛ Seven-player class-level pairings, one game with each of six opponents. ☛ Players must have a USCF CC rating to enter. ☛ 1st-place winner receives \$130 cash prize and a certificate signed by Victor Palciauskas. ☛ **Entry fee: \$25.**

E-MAIL RATED EVENTS (NEED E-MAIL ACCESS):

LIGHTNING MATCH ☛ Two players with two, four or six game option. ☛ **Entry fee \$5 per person.**

Swift Quads ☛ Four-player, double round-robin format. ☛ 1st-place prize merchandise credit of \$30. ☛ **Entry fee: \$10.**

Express Tournament

☛ Seven-player events, one game with each of six opponents. ☛ Prizes: *1st place* \$30 merchandise credit, *2nd place* \$20 credit. ☛ **Entry fee: \$15.**

USCF's 2nd ANNUAL

2005 E-mail Correspondence Chess
Electronic Knights Championship

(Seven-player sections, one game with each of six opponents.)

\$1,500 First Prize

(plus title of USCF's Electronic Knights Champion and plaque)

• 2nd place \$800 • 3rd place \$600 • 4th place \$400 • 5th place \$200 • 6th thru 10th place \$100 each. **Entry fee: \$25.**

The entry deadline is November 30, 2005.

These USCF Correspondence Chess events are rated and open to all USCF members with e-mail access. Your USCF membership must remain current for the duration of the event, and entry fees must be paid in U.S. dollars. Maximum number of tournament entries allowed for the year for each player is ten.

Note: Prize fund guaranteed (based on 400 entries) and will be increased or decreased proportionately per number of entries assigned.

NOTE: Except for *Lightning Matches, Swift Quads and Express Tournaments*, players will use post office mail, unless opponents agree to use e-mail.

TO ENTER: 800-388-KING (5464) FAX 845-561-CHES (2437)

Name _____
USCF ID# _____
Address _____ City _____
State _____ ZIP _____ Phone _____
E-mail _____
Credit card # (VISA, MC, Discover, AMEX) _____
Exp. date _____