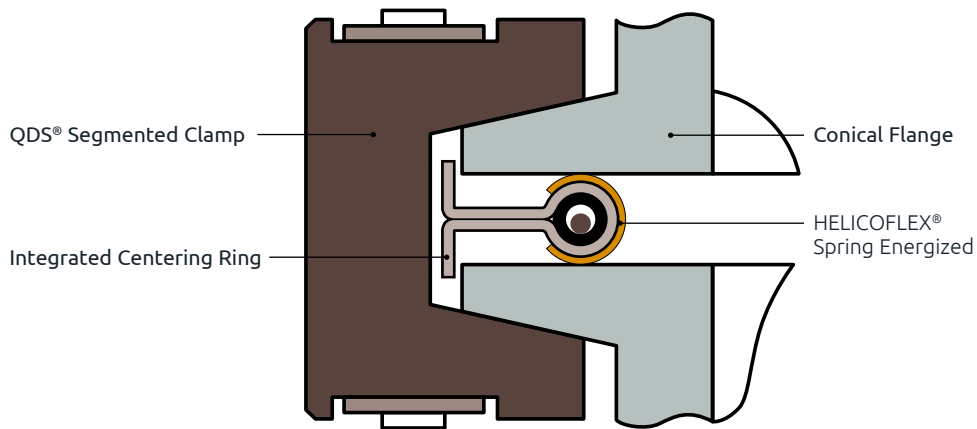
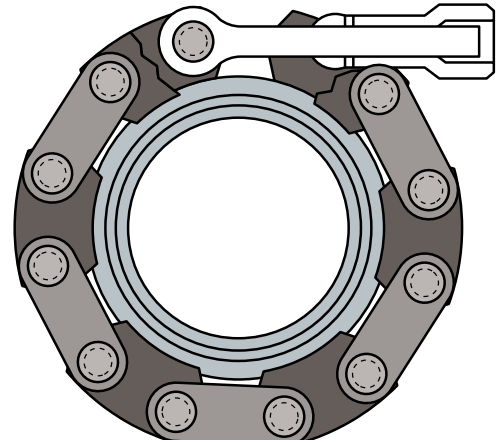




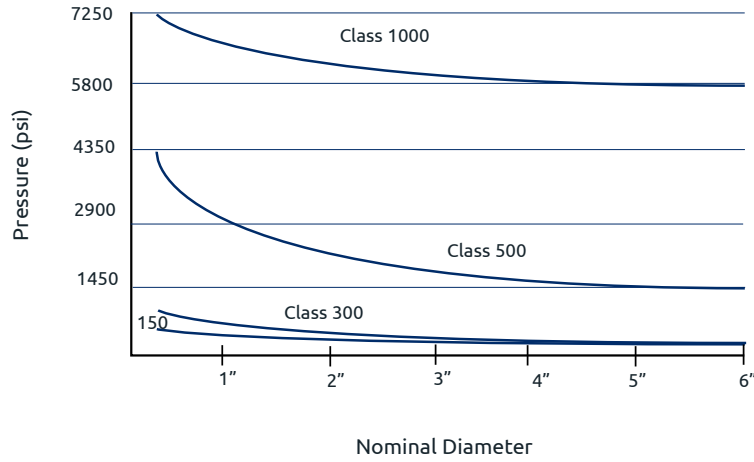
### SEALING CONCEPT

The Quick Disconnect System (QDS®) is designed to be assembled and disassembled quickly while offering space saving features. A typical QDS® requires less space than a traditional bolted assembly and can be easier to install, especially in tight locations where access to bolts and screws may be difficult. This feature is especially beneficial in radioactive environments where personnel exposure is an issue. The QDS® is available for both standard ISO-KF sizes and similar custom sizes for low and medium pressure applications.



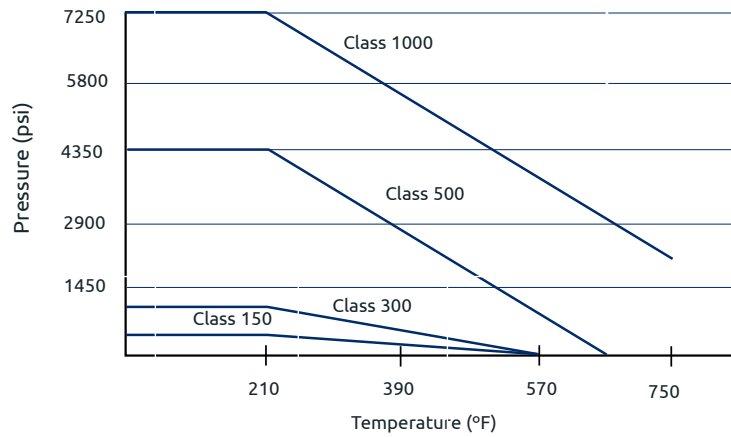
Quick Disconnect System  
(Section View)

**PRESSURE LIMITS X NOMINAL DIAMETER (70°F)**



NOTE: Hydraulic Pressure

**PRESSURE LIMITS X OPERATING TEMPERATURE**



\* Reference only. Must be adjusted for nominal diameter.

**CLAMPS**

Reference Number			
<b>300</b>	<b>A</b>	<b>55</b>	<b>NM</b>
<b>Class*</b> 150 300 500	<b>Link Size</b>	<b>Flange OD (mm)</b>	<b>Non-Magnetic (Optional)</b> This is a special option for applications that require reduced magnetic permeability

**QDS® SEAL-CLAMP COMPATIBILITY**

	Jacket Material	Class 150	Class 300	Class 500	Class 1000
HELICOFLEX® HL290P	Aluminum	O	O	O	O
	Silver	X	O	O	O
	Copper	X	X	O	O
	Nickel	X	X	O	O
	Stainless Steel	X	X	O	O
DELTA® HLV290P	Aluminum	O	O	O	O
	Silver	X	O	O	O
	Copper	X	X	O	O
	Nickel	X	X	O	O
	Stainless Steel	X	X	O	O

**FLANGES**

Reference Number			Weld Stub Description		
<b>300</b>	<b>KF</b>	<b>55</b>	<b>1-½</b>	<b>Sch 10</b>	<b>Short</b>
<b>Class*</b> 150 300 500	<b>Flange Type</b> KF Class 300/500  L Standard ISO Class 150	<b>Flange OD (mm)</b>	<b>Pipe/Tube OD (Class 300/500)</b>	<b>Pipe Schedule Tube thickness (Class 300/500)</b>	<b>Stub Length (Class 300/500)</b>

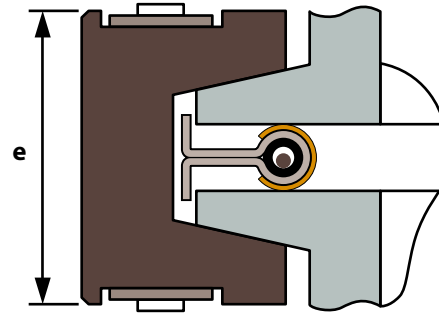
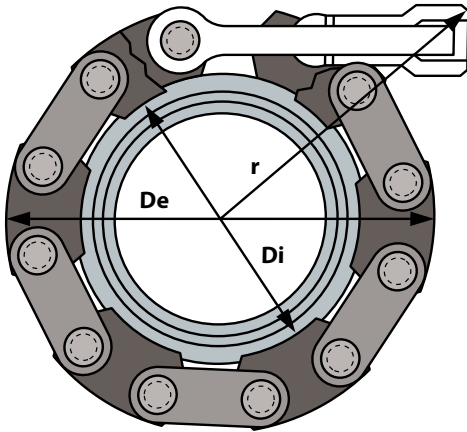
**Example:**  
**300KF55 1.5" Sch 10, short**  
 Class 300  
 Type KF  
 Flange OD = 55mm  
 Pipe OD = 1.5"  
 Pipe Schedule = 10  
 Stub Length = Short (1.181")

**Blind Flanges:**  
 Blind Flanges may be specified by placing a "T" in front of the Reference Number

\* The class type is based on load capability expressed in N/mm and is NOT related to the pound ratings for ANSI B16.5 flanges.

Example: T300KF55

CLAMPS: ISO KF



LIGHT: CLASS 150

CLAMP DIMENSIONS													
ISO KF Nominal Diameter	Part Number	De		Di		r		e		max pressure		max torque	
		in	mm	in	mm	in	mm	in	mm	psi	bars	in.lb	Nm
10/16	150 L 30	2.284	58	0.827	21	2.402	61	0.906	23	290	20	35.0	4
20/25	150 L 40	2.795	71	1.181	30	2.284	58	0.906	23	174	12	62.0	7
32/40	150 L 55	3.346	85	1.772	45	2.559	65	0.906	23	145	10	80.0	9
50	150 L 75	4.016	102	2.559	65	2.796	71	0.906	23	73	5	89.0	10

Material:

- Aluminum links
- Non-magnetic side-plates
- Non-magnetic stainless steel screws

Technical Data:

- Clamping load: 150 N/mm (860 lb/in)
  - Temperature: 392°F (200°C) max.
- The selection is made according to the ISO Nominal Diameter reference

NOTE: ISO nominal diameter is sometimes denoted as NW or QF

HEAVY: CLASS 300

CLAMP DIMENSIONS													
ISO KF Nominal Diameter	Part Number	De		Di		r		e		max pressure		max torque	
		in	mm	in	mm	in	mm	in	mm	psi	bars	in.lb	Nm
10/16	300 A 30	2.362	60	0.787	20	2.165	55	1.260	32	870	60	53	6
20/25	300 A 40	2.756	70	1.181	30	2.284	58	1.260	32	580	40	89	10
32/40	300 A 55	3.307	84	1.772	45	2.441	62	1.260	32	580	40	124	14
50	300 A 75	3.937	100	2.559	65	2.756	70	1.260	32	290	20	159	18

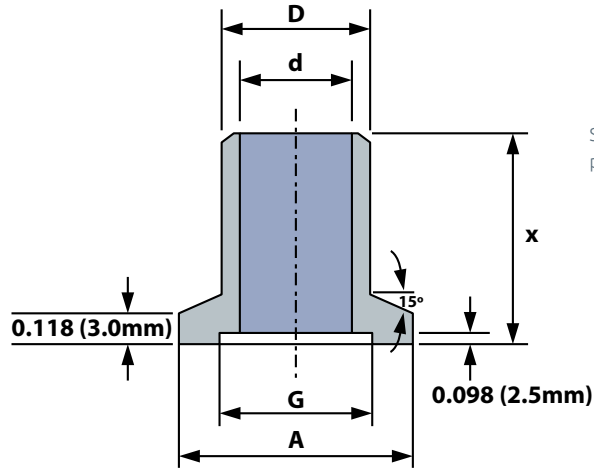
Material:

- Stainless Steel links
- Stainless Steel side-plates
- Steel screw (stainless steel on request)

Technical Data:

- Clamping load: 300 N/mm (1715 lb/in)
- Temperature: 572°F (300°C) max.

FLANGES: ISO KF

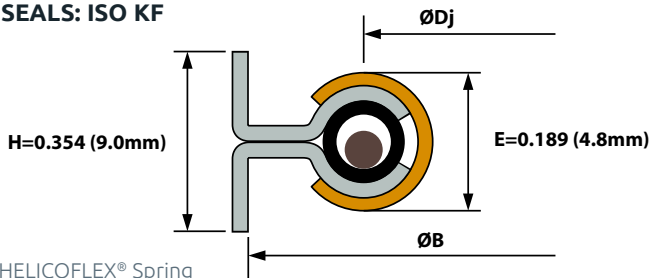


Standard ISO KF Flange per ISO 2861

FLANGE DIMENSIONS													
ISO KF Nominal Diameter	A		D		d		G		X-short		X-long		Flange ref. number
	in	mm	in	mm	in	mm	in	mm	in	mm	in	mm	
10	1.181	30	0.551	14	0.394	10	0.480	12.2	0.787	20	1.969	50	150 KF 30 ND 10
16	1.181	30	0.780	19.8	0.630	16	0.677	17.2	0.787	20	1.969	50	150 KF 30 ND 16
20	1.575	40	0.984	25	0.827	21	0.874	22.2	0.984	25	1.969	50	150 KF 40 ND 20
25	1.575	40	1.102	28	0.945	24	1.032	26.2	0.984	25	1.969	50	150 KF 40 ND 25
32	2.165	55	1.496	38	1.260	32	1.346	34.2	1.181	30	2.362	60	150 KF 55 ND 32
40	2.165	55	1.732	44	1.575	40	1.622	41.2	1.181	30	2.362	60	150 KF 55 ND 40
50	2.953	75	2.244	57	1.969	50	2.055	52.2	1.181	30	2.362	60	150 KF 75 ND 50

NOTE: Flange class 150 NF E 29-724/ISO 2861

SEALS: ISO KF

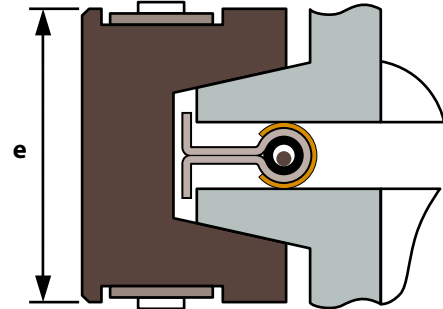
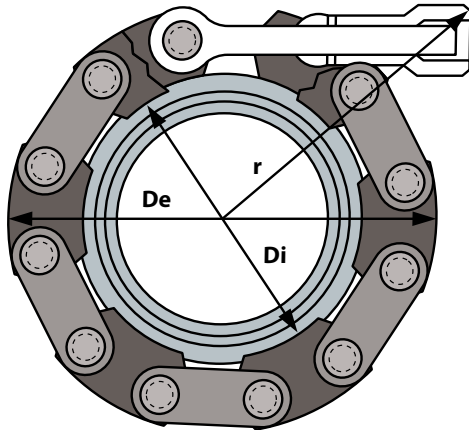


HELICOFLEX® Spring Energized Seal Type: HL290P

SEAL DIMENSIONS - ALUMINUM JACKET					
ISO KF Nominal Diameter	ØDj		ØB		Seal Type
	in	mm	in	mm	
10/16	0.866	22.0	1.185	30.1	HL290P-4.8AI ND 16
20/25	1.268	32.2	1.579	40.1	HL290P-4.8AI ND 25
32/40	1.878	47.7	2.169	55.1	HL290P-4.8AI ND 40
50	2.449	62.2	2.957	75.1	HL290P-4.8AI ND 50

Other jacket materials available upon request.

CLAMPS: CLASS 300



Clamp Reference	Tube OD (Max)		Clamp Dimensions								Pressure (Max) psi	Torque (Max) ft.lb
	in	mm	De		Di		r		e			
			in	mm	in	mm	in	mm	in	mm		
300 A 30	0.709	18	2.362	60	0.787	20	2.165	55	1.260	32	870	4
300 A 40	1.102	28	2.756	70	1.181	30	2.283	58	1.260	32	580	7
300 A 55	1.693	43	3.307	84	1.772	45	2.441	62	1.260	32	580	10
300 A 75	2.441	62	3.937	100	2.559	65	2.756	70	1.260	32	290	13
300 B 92	2.992	76	5.512	140	3.150	80	4.134	105	1.614	41	290	37
300 B 114	3.780	96	6.299	160	4.016	102	4.528	115	1.614	41	261	37
300 B 134	4.567	116	7.087	180	4.803	122	4.921	125	1.614	41	232	37
300 C 167	5.748	146	9.055	230	6.024	153	6.142	156	2.087	53	232	89
300 C 201	7.087	180	10.630	270	7.362	187	6.890	175	2.087	53	203	89
300 C 252	9.055	230	12.598	320	9.370	238	7.677	195	2.087	53	174	89
300 D 304	10.945	278	14.961	380	11.260	286	9.055	230	2.756	70	174	133
300 D 356	12.992	330	17.087	434	13.307	338	10.236	260	2.756	70	145	133
300 D 387	14.173	360	18.110	460	14.528	369	10.827	275	2.756	70	116	133
300 D 438	16.142	410	20.079	510	16.535	420	11.811	300	2.756	70	58	133

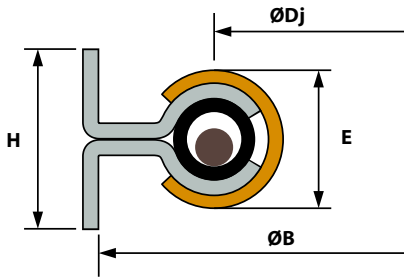
**Technical Data:**

- Clamping load: 300 N/mm (1715 lb/in)
- Temperature: 572°F (300°C) max.

**Material:**

- Stainless Steel links
- Stainless Steel side-plates
- Steel screw (stainless steel on request)

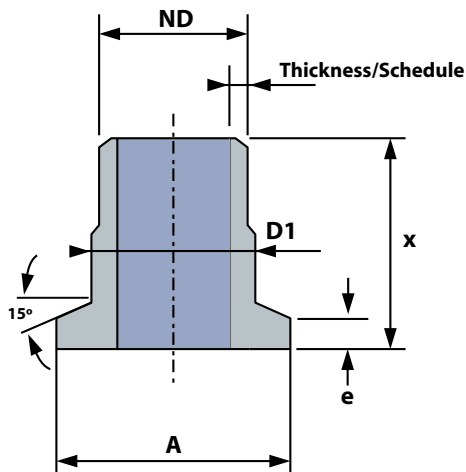
SEALS: CLASS 300



HELICOFLEX® Spring Energized Seal  
Type: HL290P

Clamp Reference	Clamp Dimensions								Seal Reference
	ØB		ØDj		E		H		
	in	mm	in	mm	in	mm	in	mm	
300 A 30	1.185	30.1	0.866	22.0	0.110	2.8	0.315	8	HL290P - 2.8 x 30
300 A 40	1.579	40.1	1.268	32.2	0.110	2.8	0.315	8	HL290P - 2.8 x 40
300 A 55	2.169	55.1	1.878	47.7	0.110	2.8	0.315	8	HL290P - 2.8 x 55
300 A 75	2.957	75.1	2.449	62.2	0.110	2.8	0.315	8	HL290P - 2.8 x 75
300 B 92	3.626	92.1	3.268	83.0	0.189	4.8	0.354	9	HL290P - 4.8 x 92
300 B 114	4.492	114.1	4.055	103.0	0.189	4.8	0.354	9	HL290P - 4.8 x 114
300 B 134	5.280	134.1	4.764	121.0	0.189	4.8	0.354	9	HL290P - 4.8 x 134
300 C 167	6.579	167.1	6.063	154.0	0.189	4.8	0.472	12	HL290P - 4.8 x 167
300 C 201	7.917	201.1	7.283	185.0	0.189	4.8	0.472	12	HL290P - 4.8 x 201
300 C 252	9.925	252.1	9.291	236.0	0.189	4.8	0.472	12	HL290P - 4.8 x 252
300 D 304	11.972	304.1	11.339	288.0	0.189	4.8	0.551	14	HL290P - 4.8 x 304
300 D 356	14.020	356.1	13.268	337.0	0.189	4.8	0.551	14	HL290P - 4.8 x 356
300 D 387	15.240	387.1	14.488	368.0	0.189	4.8	0.551	14	HL290P - 4.8 x 387
300 D 438	17.248	438.1	16.496	419.0	0.189	4.8	0.551	14	HL290P - 4.8 x 438

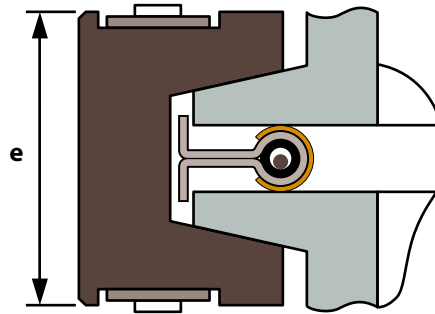
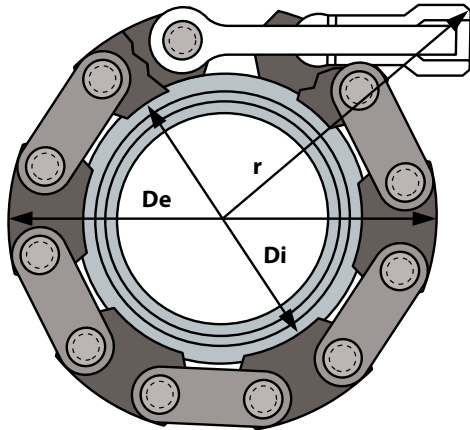
FLANGES: CLASS 300



ND = Nominal Diameter

Clamp Reference	Flange Dimensions					Flange Reference	
	A		D1		e		
	in	mm	in	mm	in	mm	
300 A 30	1.181	30	0.709	18	0.157	4.0	300 KF 30
300 A 40	1.575	40	1.102	28	0.157	4.0	300 KF 40
300 A 55	2.165	55	1.693	43	0.157	4.0	300 KF 55
300 A 75	2.953	75	2.480	63	0.157	4.0	300 KF 75
300 B 92	3.622	92	3.071	78	0.248	6.3	300 KF 92
300 B 114	4.488	114	3.937	100	0.248	6.3	300 KF 114
300 B 134	5.276	134	4.724	120	0.248	6.3	300 KF 134
300 C 167	6.575	167	5.906	150	0.327	8.3	300 KF 167
300 C 201	7.913	201	7.244	184	0.327	8.3	300 KF 201
300 C 252	9.921	252	9.252	235	0.327	8.3	300 KF 252
300 D 304	11.969	304	11.102	282	0.445	11.3	300 KF 304
300 D 356	14.016	356	13.150	334	0.445	11.3	300 KF 356
300 D 387	15.236	387	14.370	365	0.445	11.3	300 KF 387
300 D 438	17.244	438	16.378	416	0.445	11.3	300 KF 438

CLAMPS: CLASS 500



**Material:**

- Stainless Steel links
- Stainless Steel side-plates
- Steel screw

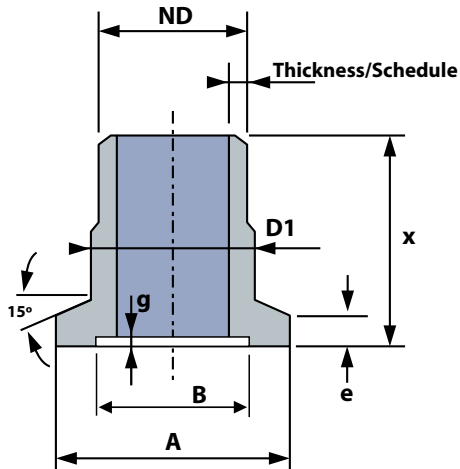
**Technical Data:**

- Clamping load: 500 N/mm (2855 lb/in)
- Temperature: 662°F (350°C) max.

Clamp Reference	Tube OD (Max)		Clamp Dimensions								Pressure (Max) psi	Torque (Max) ft.lb
	in	mm	De		Di		r		e			
			in	mm	in	mm	in	mm	in	mm		
500 A 30	0.709	18	2.362	60	0.787	20	2.165	55	1.260	32	4350	13
500 A 40	1.102	28	2.756	70	1.181	30	2.283	58	1.260	32	2900	13
500 A 55	1.693	43	3.307	84	1.772	45	2.441	62	1.260	32	2610	13
500 B 75	2.402	61	4.803	122	2.480	63	4.134	105	1.614	41	2610	37
500 B 92	2.992	76	5.512	140	3.150	80	4.134	105	1.614	41	2030	37
500 B 114	3.780	96	6.299	160	4.016	102	4.528	115	1.614	41	1450	37
500 C 134	4.528	115	7.559	192	4.724	120	5.709	145	2.087	53	1450	89
500 C 167	5.669	144	9.055	230	6.024	153	6.142	156	2.087	53	1160	89
500 D 201	6.693	170	11.181	284	7.205	183	6.890	175	2.756	70	1160	133
500 D 252	8.661	220	13.071	332	9.213	234	8.386	213	2.756	70	1015	133
500 D 304	10.787	274	14.961	380	11.260	286	9.055	230	2.756	70	870	133
500 E 356	12.756	324	17.126	435	13.150	334	10.433	265	3.307	84	870	184
500 E 387	14.016	356	18.701	475	14.370	365	11.024	280	3.307	84	580	184
500 E 438	16.024	407	20.472	520	16.378	416	12.205	310	3.307	84	290	184

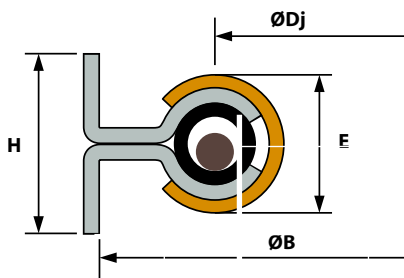


FLANGES: CLASS 500



Clamp Reference	Clamp Dimensions										Flange Reference
	A		B		D1		g		e		
	in	mm	in	mm	in	mm	in	mm	in	mm	
500 A 30	1.181	30	0.992	25.2	0.709	18	0.031	0.8	0.189	4.8	500 KF 30
500 A 40	1.575	40	1.394	35.4	1.102	28	0.031	0.8	0.189	4.8	500 KF 40
500 A 55	2.165	55	2.004	50.9	1.693	43	0.031	0.8	0.189	4.8	500 KF 55
500 B 75	2.953	75	2.575	65.4	2.402	61	0.035	0.9	0.311	7.9	500 KF 75
500 B 92	3.622	92	3.413	86.7	3.071	78	0.035	0.9	0.311	7.9	500 KF 92
500 B 114	4.488	114	4.201	106.7	3.937	100	0.035	0.9	0.311	7.9	500 KF 114
500 C 134	5.276	134	4.909	124.7	4.646	118	0.035	0.9	0.390	9.9	500 KF 134
500 C 167	6.575	167	6.209	157.7	5.906	150	0.035	0.9	0.390	9.9	500 KF 167
500 D 201	7.913	201	7.429	188.7	7.087	180	0.035	0.9	0.508	12.9	500 KF 201
500 D 252	9.921	252	9.437	239.7	9.094	231	0.035	0.9	0.508	12.9	500 KF 252
500 D 304	11.969	304	11.484	291.7	11.102	282	0.035	0.9	0.508	12.9	500 KF 304
500 E 356	14.016	356	13.413	340.7	12.992	330	0.035	0.9	0.665	16.9	500 KF 356
500 E 387	15.236	387	14.634	371.7	14.213	361	0.035	0.9	0.665	16.9	500 KF 387
500 E 438	17.244	438	16.642	422.7	16.220	412	0.035	0.9	0.665	16.9	500 KF 438

SEALS: CLASS 500



Clamp Reference	Clamp Dimensions								Seal Reference
	ØB		ØDj		E		H		
	in	mm	in	mm	in	mm	in	mm	
500 A 30	1.185	30.1	0.866	22.0	0.110	2.8	0.315	8	HL290P - 2.8 x 30
500 A 40	1.579	40.1	1.268	32.2	0.110	2.8	0.315	8	HL290P - 2.8 x 40
500 A 55	2.169	55.1	1.878	47.7	0.110	2.8	0.315	8	HL290P - 2.8 x 55
500 B 75	2.957	75.1	2.449	62.2	0.126	3.2	0.354	9	HL290P - 3.2 x 75
500 B 92	3.626	92.1	3.268	83.0	0.126	3.2	0.354	9	HL290P - 3.2 x 92
500 B 114	4.492	114.1	4.055	103.0	0.126	3.2	0.354	9	HL290P - 3.2 x 114
500 C 134	5.280	134.1	4.764	121.0	0.126	3.2	0.472	12	HL290P - 3.2 x 134
500 C 167	6.579	167.1	6.063	154.0	0.126	3.2	0.472	12	HL290P - 3.2 x 167
500 D 201	7.917	201.1	7.283	185.0	0.126	3.2	0.551	14	HL290P - 3.2 x 201
500 D 252	9.925	252.1	9.291	236.0	0.126	3.2	0.551	14	HL290P - 3.2 x 252
500 D 304	11.972	304.1	11.339	288.0	0.126	3.2	0.551	14	HL290P - 3.2 x 304
500 E 356	14.020	356.1	13.268	337.0	0.126	3.2	0.630	16	HL290P - 3.2 x 356
500 E 387	15.240	387.1	14.488	368.0	0.126	3.2	0.630	16	HL290P - 3.2 x 387
500 E 438	17.248	438.1	16.496	419.0	0.126	3.2	0.630	16	HL290P - 3.2 x 438

STANDARD SCHEDULE PIPE SIZES

Nom Pipe Size (in)	Pipe OD (Max) in mm		Schedule 5S				Schedule 10S			
			Thickness		ID		Thickness		ID	
			in	mm	in	mm	in	mm	in	mm
1/8	0.405	10.29					0.049	1.24	0.307	7.81
1/4	0.540	13.72					0.065	1.65	0.410	10.42
1/2	0.840	21.34	0.065	1.65	0.710	18.04	0.083	2.11	0.674	17.12
3/4	1.050	26.67	0.065	1.65	0.918	23.31	0.083	2.11	0.884	22.45
1	1.315	33.40	0.065	1.65	1.185	30.10	0.109	2.77	1.097	27.86
1-1/2	1.900	48.26	0.065	1.65	1.770	44.96	0.109	2.77	1.682	42.72
2	2.375	60.33	0.065	1.65	2.245	57.03	0.109	2.77	2.157	54.79
2-1/2	2.875	73.03	0.083	2.10	2.710	68.83	0.120	3.05	2.635	66.93
3	3.500	88.90	0.083	2.10	3.335	84.70	0.120	3.05	3.260	82.80
4	4.500	114.30	0.083	2.10	4.335	110.10	0.120	3.05	4.260	108.20
5	5.563	141.30	0.109	2.77	5.463	138.76	0.134	3.40	5.295	134.50
6	6.625	168.28	0.109	2.77	6.407	162.74	0.134	3.40	6.357	161.48
8	8.625	219.08	0.109	2.77	8.407	213.54	0.148	3.76	8.329	211.56
10	10.750	273.05	0.134	3.40	10.482	266.25	0.165	4.19	10.420	264.67
12	12.750	323.85	0.156	3.96	12.438	315.93	0.180	4.57	12.390	314.71
14	14.000	355.60	0.156	3.96	13.688	347.68	0.188	4.78	13.624	346.04
16	16.000	406.40	0.165	4.19	15.670	398.02	0.188	4.78	15.624	396.84

Nom Pipe Size (in)	Pipe OD (Max) in mm		Schedule 40S				Schedule 80S			
			Thickness		ID		Thickness		ID	
			in	mm	in	mm	in	mm	in	mm
1/8	0.405	10.29	0.068	1.73	0.269	6.83	0.095	2.41	0.215	5.47
1/4	0.540	13.72	0.088	2.24	0.364	9.24	0.119	3.02	0.302	7.68
1/2	0.840	21.34	0.109	2.77	0.622	15.80	0.147	3.73	0.546	13.88
3/4	1.050	26.67	0.113	2.87	0.824	20.93	0.154	3.91	0.742	18.85
1	1.315	33.40	0.133	3.38	1.049	26.64	0.179	4.55	0.957	24.30
1-1/2	1.900	48.26	0.145	3.68	1.610	40.90	0.200	5.08	1.500	38.10
2	2.375	60.33	0.154	3.91	2.067	52.51	0.218	5.54	1.939	49.25
2-1/2	2.875	73.03	0.203	5.16	2.469	62.71	0.276	7.01	2.323	59.01
3	3.500	88.90	0.216	5.49	3.068	77.92	0.300	7.62	2.900	73.66
4	4.500	114.30	0.237	6.02	4.026	102.26	0.337	8.56	3.826	97.18
5	5.563	141.30	0.258	6.55	5.047	128.20	0.376	9.53	4.813	122.24
6	6.625	168.28	0.280	7.11	6.065	154.06	0.432	10.97	5.761	146.34
8	8.625	219.08	0.322	8.18	7.981	202.72	0.500	12.70	7.625	193.68
10	10.750	273.05	0.365	9.27	10.020	254.51	0.500	12.70	9.750	247.65
12	12.750	323.85	0.375	9.52	12.000	304.81	0.500	12.70	11.750	298.45
14	14.000	355.60	0.375	9.52	13.250	336.56	0.500	12.70	13.004	330.30
16	16.000	406.40	0.375	9.52	15.250	387.36	0.500	12.70	15.000	381.00

**WELD STUB LENGTHS**

Flange Reference				Stub Length (X)					
Class			Suffix	short		long		extra long	
				in	mm	in	mm	in	mm
150	300	500	KF 30	0.787	20	1.969	50	3.937	100
150	300	500	KF 40	0.984	25	1.969	50	3.937	100
150	300	500	KF 55	1.181	30	2.362	60	4.724	120
150	300	500	KF 75	1.181	30	2.362	60	4.724	120
N/A	300	500	KF 92	1.181	30	2.362	60	4.724	120
N/A	300	500	KF 114	1.772	45	3.150	80	6.299	160
N/A	300	500	KF 134	1.969	50	3.543	90	7.874	200
N/A	300	500	KF 167	1.969	50	3.543	90	7.874	200
N/A	300	500	KF 201	1.969	50	3.937	100	7.874	200
N/A	300	500	KF 252	1.969	50	3.937	100	7.874	200
N/A	300	500	KF 304	1.969	50	3.937	100	7.874	200
N/A	300	500	KF 356	2.362	60	4.724	120	9.449	240
N/A	300	500	KF 387	2.362	60	4.724	120	9.449	240
N/A	300	500	KF 438	2.362	60	4.724	120	9.449	240

**ISO STANDARD TUBING**

Tube OD		Light				Medium				Heavy			
in	mm	Thickness		ID		Thickness		ID		Thickness		ID	
		in	mm	in	mm	in	mm	in	mm	in	mm	in	mm
0.236	6.00	0.039	1.00	0.157	4.00								
0.315	8.00	0.039	1.00	0.236	6.00								
0.394	10.00	0.039	1.00	0.315	8.00								
0.472	12.00	0.039	1.00	0.394	10.00	0.059	1.50	0.354	9.00				
0.551	14.00	0.039	1.00	0.472	12.00	0.059	1.50	0.433	11.00	0.079	2.00	0.394	10.00
0.630	16.00	0.039	1.00	0.551	14.00	0.059	1.50	0.669	17.00	0.079	2.00	0.472	12.00
0.787	20.00	0.039	1.00	0.709	18.00	0.059	1.50	0.866	22.00	0.079	2.00	0.630	16.00
0.984	25.00	0.039	1.00	0.906	23.00	0.059	1.50	0.866	22.00	0.079	2.00	0.827	21.00
1.102	28.00	0.039	1.00	1.024	26.00	0.059	1.50	0.984	25.00	0.079	2.00	0.945	24.00
1.496	38.00	0.039	1.00	1.417	36.00	0.063	1.60	1.370	34.80	0.079	2.00	1.339	34.00
1.752	44.50	0.059	1.50	1.634	41.50	0.079	2.00	1.594	40.50	0.102	2.60	1.547	39.30
2.244	57.00	0.059	1.50	2.126	54.00	0.079	2.00	2.087	53.00	0.102	2.60	2.039	51.80
2.996	76.10	0.063	1.60	2.870	72.90	0.091	2.30	2.815	71.50	0.114	2.90	2.768	70.30

**QDS CLASS 1000**

The Class 1000 series is a heavy duty clamp and flange assembly designed for medium to high pressure. The flange and seal assembly can be modified to accept a variety of seal configurations. Please contact Applications Engineering for more information.

**REMOTE HANDLING**

The QDS® clamp and seal can be fitted with special handling features such as custom cross bolts and seal tabs for easy installation and removal with remote handling equipment. These custom QDS® assemblies are ideal for radioactive environments where personnel exposure must be reduced or eliminated. Please contact Applications Engineering for more information.

# APPLICATIONS DATA SHEET

Tel: 800-233-1722 Fax: 803-783-4279

E-Mail: sales@techneticsgroup.com



EnPro Industries companies

COMPANY: _____	PHONE: _____
CONTACT: _____	FAX: _____
ADDRESS: _____	E-MAIL: _____
	DATE: _____

## APPLICATION

Brief Description: \_\_\_\_\_

Is This a New Design?       Yes       No      Are Modifications Possible?       Yes       No

Drawing or Sketch Attached?       Yes       No

## SERVICE CONDITIONS

Working Pressure: _____	Temp/Pressure Cycles: _____
Maximum Pressure: _____	Media: _____
Working Temperature: _____	Required Sealing Level: _____
Maximum Temperature: _____	Life Expectancy: _____
<input type="checkbox"/> Remote Handling Required (Radiation?)	<input type="checkbox"/> Non-Magnetic Required

## FLANGE DETAILS

o Technetics Group to Design (If flange design exists, then fill out "Standard" or "Special" Section below as appropriate).

Standard      Size (ie. ND, KF, DN, ISO, etc): \_\_\_\_\_      Face Surface Finish: \_\_\_\_\_ (RMS)

Flange Material \_\_\_\_\_

Special      If not standard, provide drawing or dimensions in picture below.

Flange Material = \_\_\_\_\_

Ø D = \_\_\_\_\_

Ø A = \_\_\_\_\_

Flange Thickness h = \_\_\_\_\_

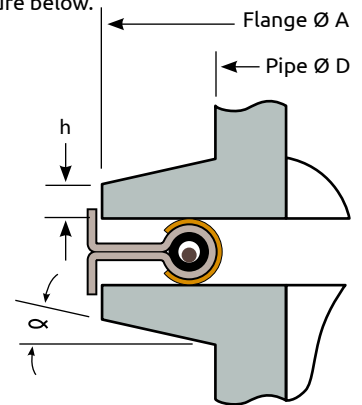
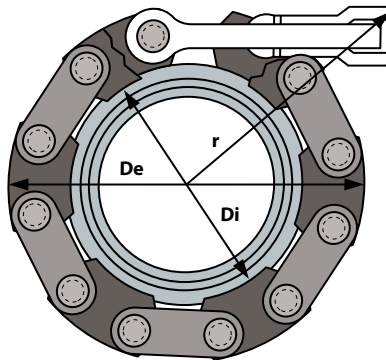
Flange Angle  $\alpha$  = \_\_\_\_\_

Clamp Width/Thickness = \_\_\_\_\_

Clamp Clearance De = \_\_\_\_\_

Bolt Clearance r = \_\_\_\_\_

Flange Stub Length = \_\_\_\_\_



## PIPE DETAILS

Size: \_\_\_\_\_      Material Grade: \_\_\_\_\_

Thickness: (Schedule / ISO Size may be provided instead) \_\_\_\_\_

## COMMENTS / NOTES

\_\_\_\_\_

\_\_\_\_\_