



Labels

[Avery Easy Peel Labels](#)

[Avery Ink Jet Labels](#)

[Avery Laser Labels](#)

[Avery Labels for the Personal Label Printer](#)

For all **Avery Label Products**, visit our product catalog at: avery.com/us/products

Avery Software Support: 1.888.835.8379

Avery Product Support: 1.800.GO.AVERY (1.800.462.8379)

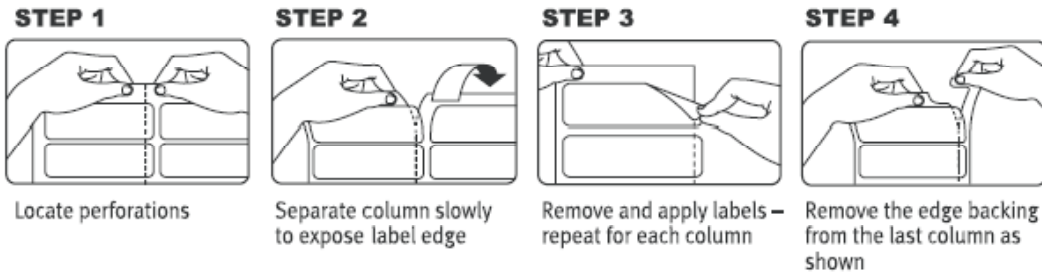


Avery Easy Peel Labels

Removing labels is easier than ever with the new **Avery Easy Peel Feature**.

See the instructions below for tips on using the new **Easy Peel Feature** or if you do not want to separate the sheet into columns, simply peel the labels as you normally would.

Instructions



For a demo of the **Easy Peel Labels**, visit: avery.com/us/products/demos/index.html

[\[BACK TO TOP\]](#)



Avery Ink Jet Labels

- Before you print onto a label sheet, first print onto a blank piece of paper. Place the printed sheet in front of a label sheet, and then hold the sheets up to a light to make sure the positioning is correct.
- Refer to your printer manual for loading and feeding recommendations. Many printers have special instructions for loading labels.
- Fan the label sheets before loading them into the paper tray. **DO NOT BEND THE CORNERS.**
- For easier feeding in most printers, place label sheets in the paper tray on top of 25 sheets of plain paper.
- Adjust the paper width lever so that it barely touches the edge of the label stack and the labels don't buckle.
- For best results, let ink on the product dry completely before removing labels from the sheet.
- Store unused label sheets flat in the original box in a cool, dry place.
- Sheets of ink jet labels can be passed through an ink jet printer only once; the tight paper path of an ink jet printer can cause the label to curl on multiple passes through the printer. This could cause the label to jam or peel off inside the printer, resulting in an expensive repair bill. Avery Dennison's guarantee of jam-free performance extends only to sheets of labels that have been fed through an ink jet printer a single time.
- Only labels designed for an ink jet printer should be used with ink jet printers. Manual, copier, and laser labels will not feed through consistently and may damage ink jet printers.
- For trouble-free label printing, have your printer thoroughly cleaned on a regular basis.
- Name Badge Labels are designed for most fabrics except leather, suede, silk, plastic, velvet, corduroy, vinyl, and lamé.

[\[BACK TO TOP\]](#)



Avery Laser Labels

- Before you print onto a label sheet, first print onto a blank piece of paper. Place the printed sheet in front of a label sheet, and then hold the sheets up to a light to make sure the positioning is correct.
- Fan the label sheets before loading them into the paper tray. **DO NOT BEND THE CORNERS.**
- Only labels designed for a laser printer should be used with laser printers. Manual, copier, and ink jet labels will not feed through consistently and may damage laser printers.
- Most laser products are designed to work in laser printers when printed directly from the automatic-feed tray.
- Refer to your printer manual for loading and feeding recommendations. Many printers have special instructions regarding the direction in which you should load sheets.
- Sheets of laser labels can be passed through a laser printer only once because the heat of the printer causes the adhesive to soften. If a sheet of labels is passed through the printer a second time, the adhesive could ooze and adhere to the inner workings of the printer, causing the labels to jam or peel off. Avery Dennison's guarantee of jam-free performance extends only to sheets of labels that have been fed through a laser printer a single time.
- Avery Fluorescent and Pastel Color Laser Labels are not recommended for ink jet printers.
- For trouble-free label printing, have your printer thoroughly cleaned on a regular basis.
- Name Badge Labels are designed for most fabrics except leather, suede, silk, plastic, velvet, corduroy, vinyl, and lamé.

[\[BACK TO TOP\]](#)



Avery Labels for the Personal Label Printer

Avery Dennison has designed unique direct print thermal label rolls to work with your Avery Personal Label Printer to provide consistent high-quality printing.

- Non-Avery Personal Label Printer rolls will not work with this printer.
- Exposure to extreme heat, direct sunlight or bright fluorescent light for extended periods of time will cause the labels to fade.
- Store unused labels in the original black wrapper to ensure label quality.
- After printing labels, avoid applying them to surfaces exposed to prolonged bright light, moisture and extreme temperatures.

For a demo of the **Personal Label Printer**, visit: avery.com/us/products/labelprinter/demo.html

[\[BACK TO TOP\]](#)