

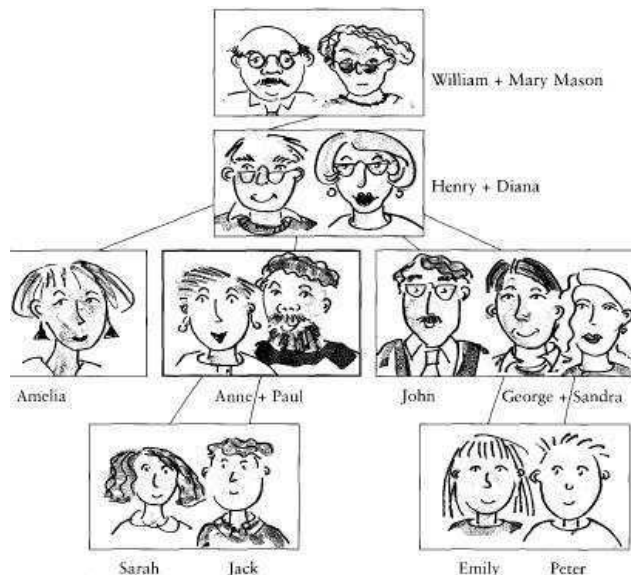


## FAMILY TREE ASSIGNMENT: INSTRUCTION SHEET

You will need to complete **PART I** & **PART II** of this assignment.

### **PART I: THE FAMILY TREE POSTER:**

- ✓ You will need to draw a visual representation of your family tree on a piece of poster board, or similar size paper.
- ✓ This family tree needs to trace one or both sides of your family back to the year 1900 or the point where your family came to this country. (You can go back farther if you would like.) Include both first and last names please, plus the relation.
- ✓ How you draw the tree is up to you, but you need to make symbols with lines connecting them and a key to explain them. Some of the symbols to consider are: male/female/alive/dead/married/divorced. You may use color to help clarify members of your family tree (pink Mom's side/blue Dad's side.)



**PART II: THE REPORT:** You will need to submit a *report* that includes the following:



**YOUR THREE FAVORITE RELATIVES:**

1. You will need to choose three of the people on your family tree and write a paragraph or two about their life. Explain in detail why you picked these people.



**A REPORT ABOUT THE “OLD COUNTRY”:**

1. You will need to research at least one of the countries to which you can trace your ancestry. The report needs to include the following:
2. Introductory paragraph briefly explaining who, what, where, why, when and how.
3. Descriptive/detailed paragraphs of the country including its culture (i.e. fashions, music, sports, customs, religion etc.) and its physical geography (i.e. mountains, deserts, important rivers, natural resources etc.)
4. A concluding paragraph that explains what you would most like to see if you went to that country today.
5. A map of the country that shows major landforms and cities. Map must be colored.

## GRADING FOR PROJECT

EXCEEDS STANDARD: <b>A</b>	ABOVE STANDARD: <b>B</b>	MEETS STANDARD: <b>C</b>
<ol style="list-style-type: none"> <li>1) Your assignment meets all the criteria for a “B” grade.</li> <li>2) PART II of your paper is a word document.</li> <li>3) Your project contains three or less spelling errors or typos.</li> <li>4) PART II of your project has a cover sheet – which includes the name of the project, your name and class period.</li> <li>5) Your project includes any three (3) of the following extra requirements:               <ul style="list-style-type: none"> <li>○ An explanation as to why your family came to the United States.</li> <li>○ Birth &amp; Death dates (when appropriate) are included with at least 75% of the people on your family tree.</li> <li>○ Three good questions you would like to ask each of your tree relatives you are writing about. (The questions must be answered by the person if they are alive.)</li> <li>○ A second complete “Old Country” segment on a DIFFERENT country to which you can trace your origins.</li> <li>○ At least ten (10) small drawings OR pictures attached to PART I – identifying your family members.</li> <li>○ Submit an exceptionally detailed and well done map of the “Old Country” that is at least as big as an 8x11 inch paper.</li> <li>○ Submit an extra map that shows the United States and clearly marks at least five (5) locations that are important to your family.</li> </ul> </li> </ol>	<ol style="list-style-type: none"> <li>1) Includes every one of the “Part I &amp; Part II” components, each of which is carefully done and written in complete sentences.</li> <li>2) Your paper has five or less spelling errors or typos.</li> </ol>	<ol style="list-style-type: none"> <li>1) The requirements for a C are the same as for a B, except that there are one or two errors or omissions that would prevent the student from getting a B.</li> </ol>