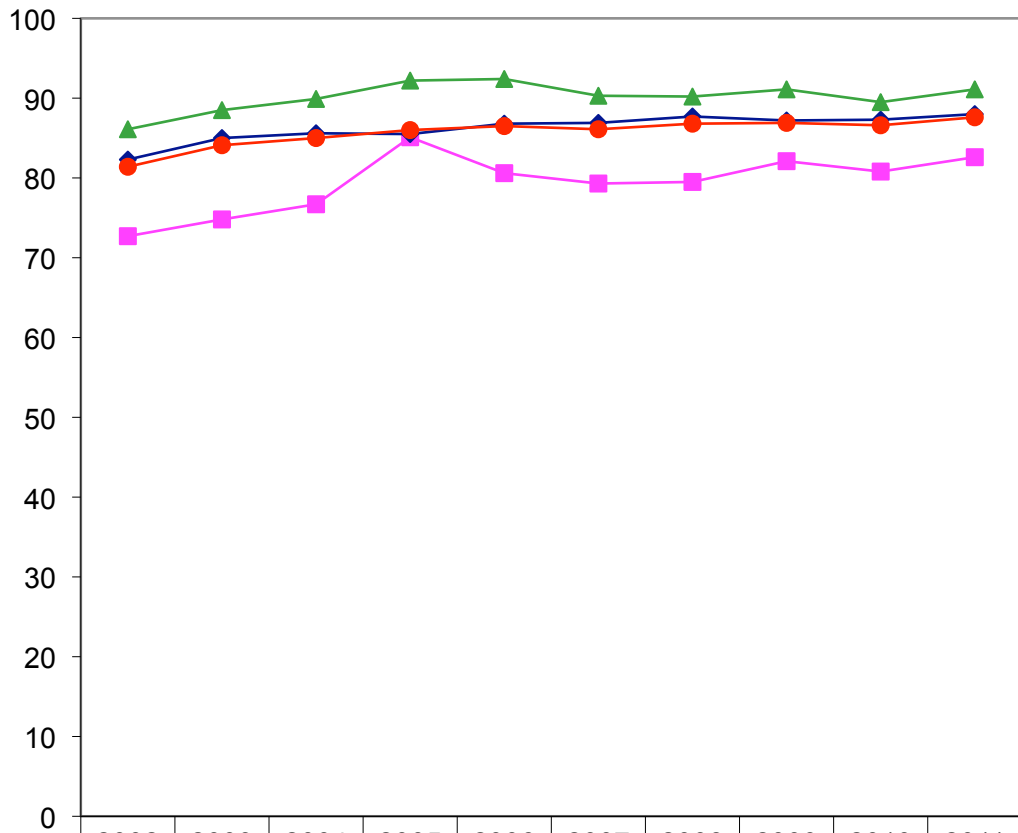


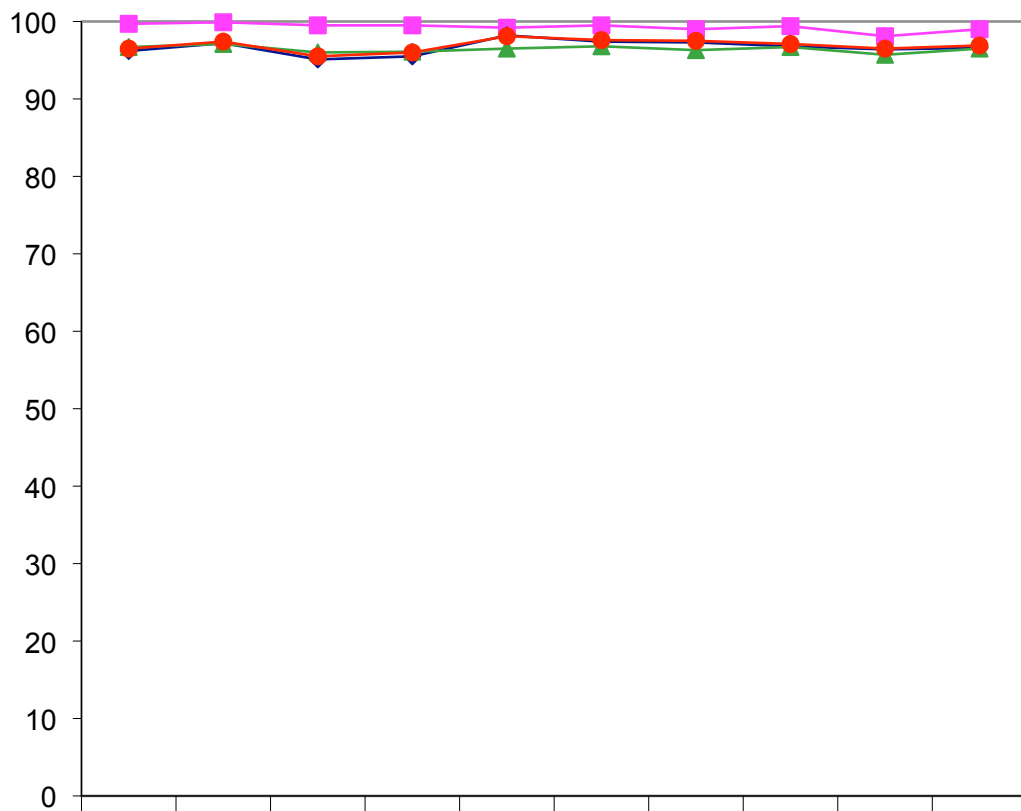
Chart B3: Percentage of GCE 'O' Level Students Who Passed English Language



	2002	2003	2004	2005	2006	2007	2008	2009	2010	2011
—■— MALAY	72.7	74.8	76.7	85.1	80.6	79.3	79.5	82.1	80.8	82.6
—◆— CHINESE	82.3	85.0	85.6	85.5	86.8	86.9	87.7	87.2	87.3	88.0
—▲— INDIAN	86.1	88.5	89.9	92.2	92.4	90.3	90.2	91.1	89.5	91.1
OTHERS	86.8	89.9	89.9	92.8	92.1	90.7	90.6	91.3	88.4	90.1
—●— OVERALL	81.4	84.1	85.0	86.0	86.5	86.1	86.8	86.9	86.6	87.6

- 1 Figures from 2005 onwards exclude IP students.
- 2 Figures include all school candidates but exclude students who took O-level subjects not in their graduating year.

Chart B4: Percentage of GCE 'O' Level Students Who Passed Mother Tongue Language

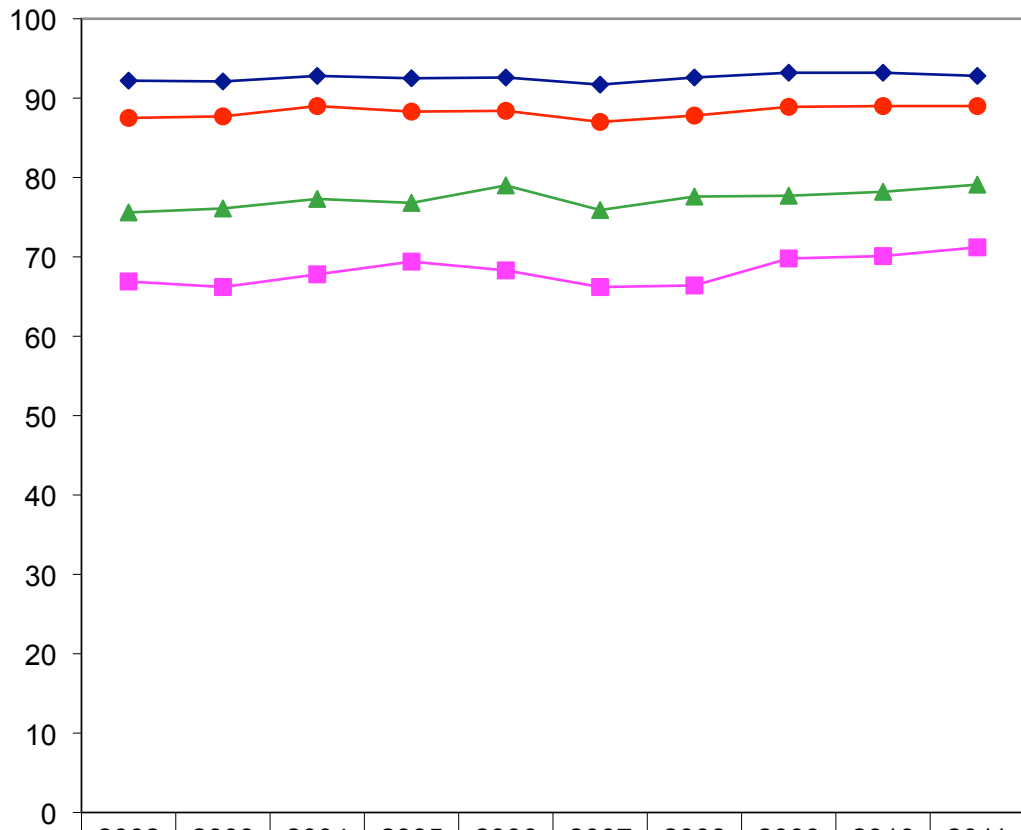


	2002	2003	2004	2005	2006	2007	2008	2009	2010	2011
—■— MALAY	99.7	99.9	99.5	99.5	99.2	99.5	99.0	99.4	98.1	99.0
—◆— CHINESE	96.2	97.2	95.1	95.5	98.2	97.4	97.3	96.8	96.4	96.6
—▲— INDIAN	96.7	97.1	96.0	96.1	96.5	96.8	96.3	96.7	95.7	96.5
OTHERS	78.3	84.7	80.8	82.5	86.6	88.1	90.4	87.6	83.6	89.3
—●— OVERALL	96.5	97.4	95.5	96.0	98.1	97.6	97.5	97.1	96.5	96.9

1 Figures from 2005 onwards exclude IP students.

2 Figures include all school candidates but exclude students who took O-level subjects not in their graduating year.

Chart B5: Percentage of GCE 'O' Level Students Who Passed Mathematics



	2002	2003	2004	2005	2006	2007	2008	2009	2010	2011
—■— MALAY	66.9	66.2	67.8	69.4	68.3	66.2	66.4	69.8	70.1	71.2
—◆— CHINESE	92.2	92.1	92.8	92.5	92.6	91.7	92.6	93.2	93.2	92.8
—▲— INDIAN	75.6	76.1	77.3	76.8	79.0	75.9	77.6	77.7	78.2	79.1
OTHERS	85.5	85.5	85.3	87.1	85.3	88.6	89.1	89.6	90.2	90.1
—●— OVERALL	87.5	87.7	89.0	88.3	88.4	87.0	87.8	88.9	89.0	89.0

- 1 Figures from 2005 onwards exclude IP students.
- 2 Figures include all school candidates but exclude students who took O-level subjects not in their graduating year