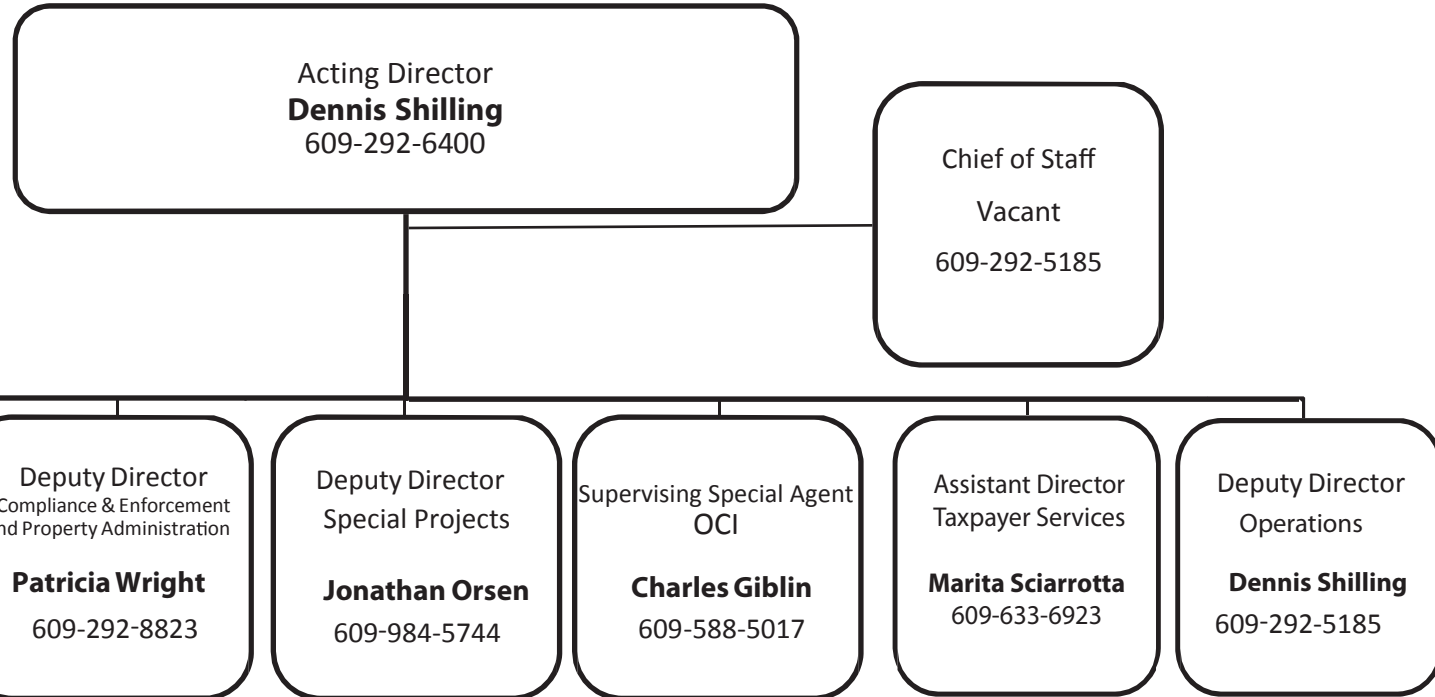


New Jersey Division of Taxation Organizational Chart



New Jersey Division of Taxation
Organizational Chart
Office of Counsel Services

Deputy Director
Denise Lambert-Harding
609-633-3723

Assistant Director
Counsel Services
Sheri Silverstein
609-633-3723

Office of the Taxpayer Advocate
609-292-6638

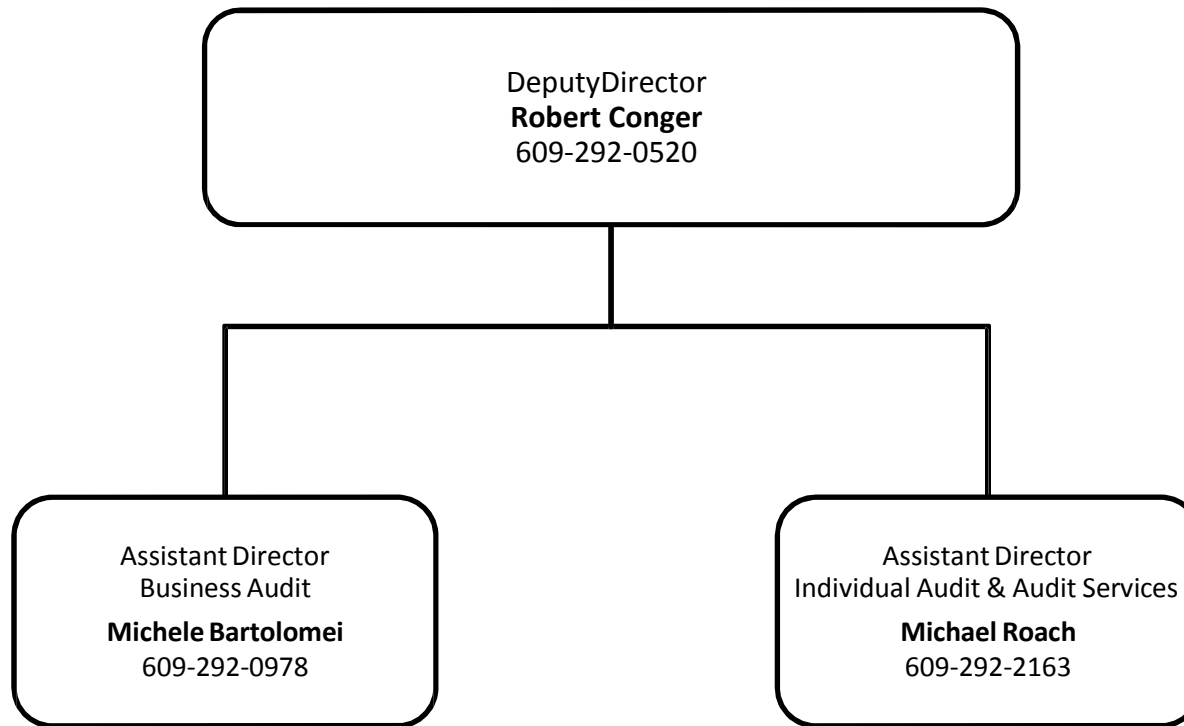
Acting Chief
Conference & Appeals
Marlene Barnhart-Mohr
609-584-5942

Chief
Regulatory Services
Maryanna Paolinie
609-292-5995

Chief
Office of Legislative Analysis
John Kelly
609-292-7127

Disclosure Office
Gary Dallett
609-292-7127

New Jersey Division of Taxation
Organizational Chart
Audit



New Jersey Division of Taxation
Organizational Chart
Deputy Director of Operations

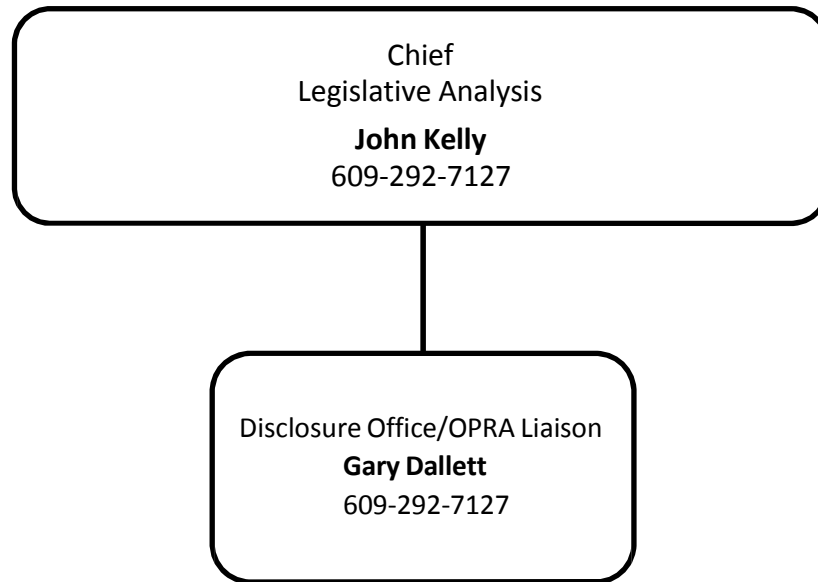
Deputy Director of Operations
Dennis Shilling
609-292-5185

Deputy Chief of Staff
Anthony Valenzuela
609-984-2402

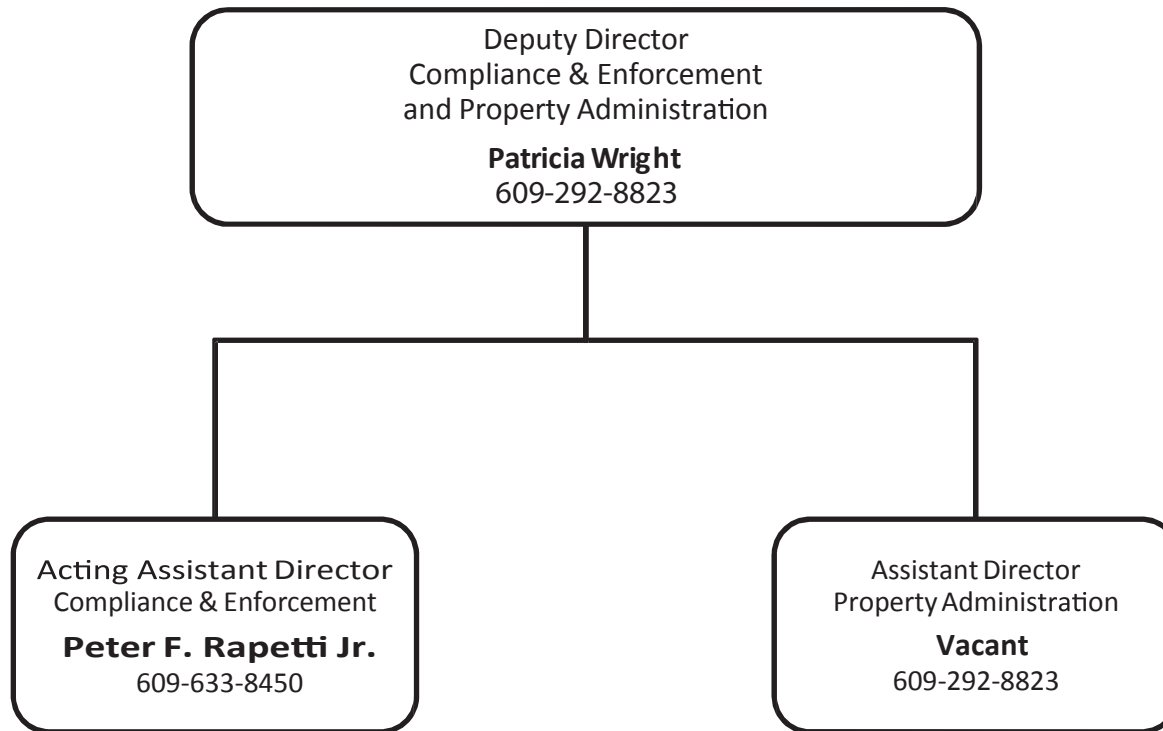
Assistant Chief
Management Services
Donald Huber
609-292-7371

Chief
Data Systems
Mario Zapicchi
609-292-5045

New Jersey Division of Taxation
Organizational Chart
Legislative Analysis Activity



New Jersey Division of Taxation
Organizational Chart
Compliance & Enforcement and Property Administration



New Jersey Division of Taxation
Organizational Chart
Business Audit

Assistant Director
Business Audit
Michele Bartolomei
609-292-0978

Acting Chief
Field Audit
Joan Grochala
609-292-7152

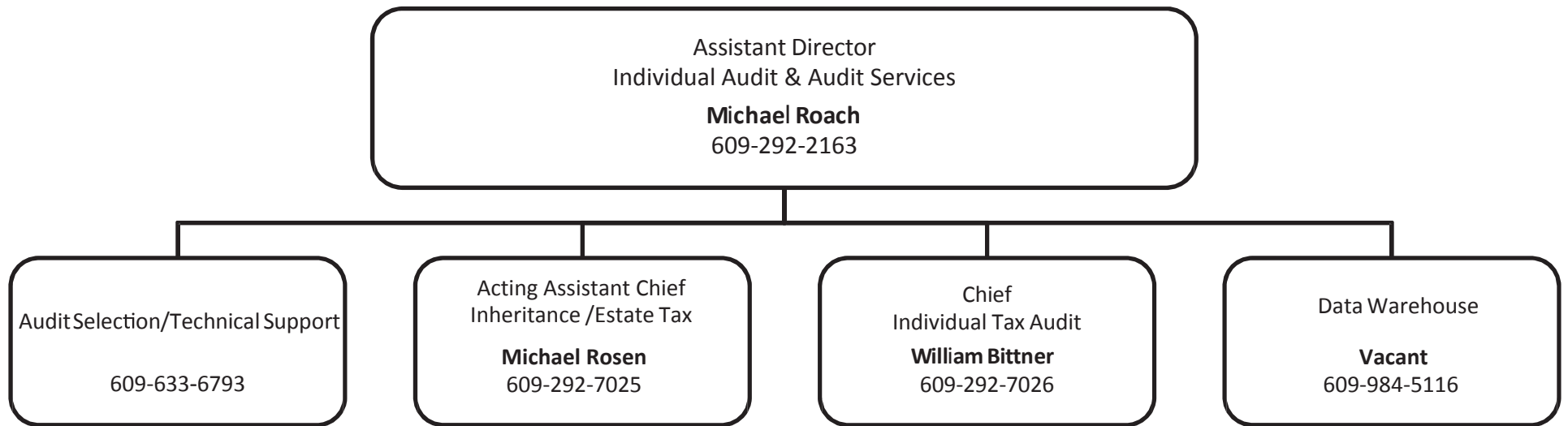
Chief
Excise Tax
Jack Griffiths
609-633-8536

Chief
Office Audit
Lee Evans
609-292-5927

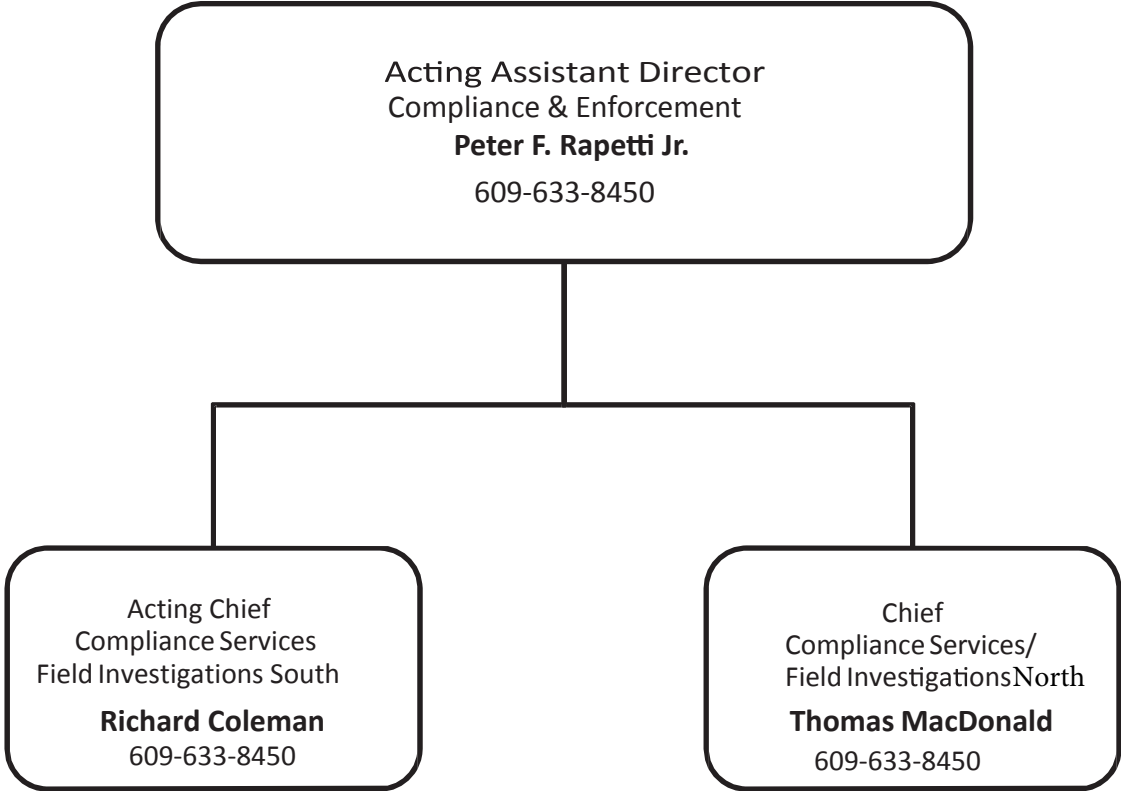
Acting Chief
Out-of-State Audit
Patrick Kelly
847-298-9550

Chief
Audit Services
Susan J. Kane
609-984-9591

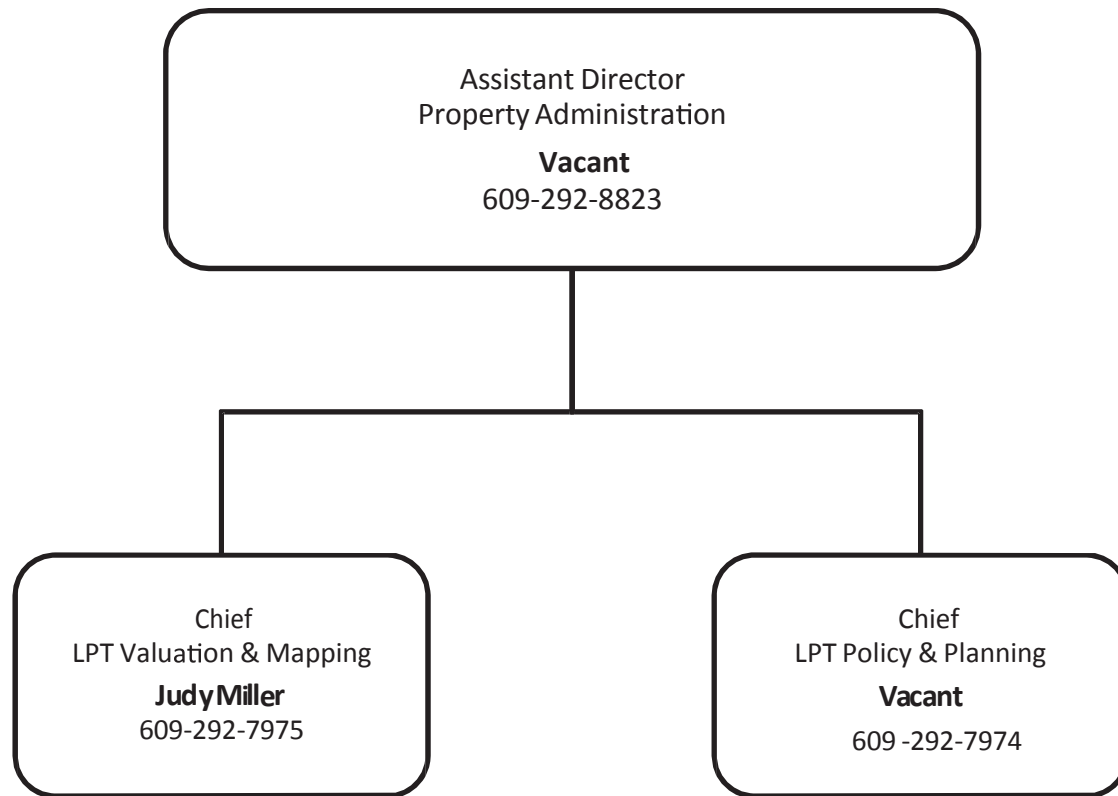
New Jersey Division of Taxation
Organizational Chart
Individual Audit & Audit Services



New Jersey Division of Taxation
Organizational Chart
Compliance & Enforcement Activity



New Jersey Division of Taxation
Organizational Chart
Property Administration Activity



New Jersey Division of
Taxation Organizational Chart
Taxpayer Services Activity

