

**GRANT APPLICATION  
FOR  
ADDITIONAL PARKING AREA FOR  
DARK DAY BOAT LAUNCH FACILITY**

**Submitted to  
CALIFORNIA DEPARTMENT  
OF  
BOATING AND WATERWAYS  
SACRAMENTO, CA**

**Submitted by  
U.S.D.A. FOREST SERVICE  
TAHOE NATIONAL FOREST  
May, 1999**

**Highway 49 and Coyote Street  
Nevada City, CA 95959**

**Contact Person: Joe Chavez (530)288-3231**

**GRANT APPLICATION  
FOR  
ADDITIONAL PARKING AREA FOR  
DARK DAY BOAT LAUNCH FACILITY**

**TABLE OF CONTENTS**

Completed Grant Application Form Page

**PART I**

Copy of Transmittal Letter

**PART 2**

National Environmental Policy Act documentation of the environmental analysis and decision to implement the proposed parking area addition at the Dark Day Boat Launching Facility.

**PART 3**

**FEASIBILITY REPORT**

1.0	GENERAL DESCRIPTION OF SURROUNDING AREA	1
1.1	Location	
1.2	Population Centers	1
1.3	Recreational Opportunities near New Bullards Bar Reservoir	1
2.0	GENERAL DESCRIPTION OF PROPOSED PROJECT SITE	3
2.1	New Bullards Bar Reservoir	4
2.2	Existing Dark Day Boat Launching Facility	4
2.3	Other New Bullards Bar Reservoir Recreation Facilities	5
3.0	PROPOSED PROJECT	7
3.1	Description of Project	7
3.2	Construction of Project	7
4.0	PROPOSED USES	7
5.0	IMPACT OF PROJECT ON EXISTING FACILITIES	8
5.1	Customer Survey Results	9
5.2	Affect on Other Boat Launching Facilities	9

6.0	ENGINEERING FEASIBILITY	10
7.0	COST ESTIMATE	10
8.0	ECONOMIC JUSTIFICATION	11
8.1	Benefits	11
8.2	Costs	11
8.3	Benefits Versus Costs	11
9.0	FINANCIAL FEASIBILITY	11
10.0	LEGAL DESCRIPTION	12
	Application for Boat Launching Facility Grant An Improvement Project (worksheet)	13

## MAPS AND DRAWINGS

Location Map (Plate 1)

Project Site (Plate 2)

Project Layout (Plates 3)

# GRANT APPLICATION

## STATE OF CALIFORNIA DEPARTMENT OF BOATING AND WATERWAYS BOAT LAUNCHING FACILITY

AGENCY USDA Forest Service, Tahoe National Forest

ADDRESS 631 Coyote Street

CITY Nevada City COUNTY Nevada ZIP 95959-2250

ASSEMBLY DISTRICT 3rd SENATE DISTRICT 1st

CONTACT PERSON Joe Chavez

PHONE# (530) 288-3231 FAX# (530) 288-0727

APPLICATION DATE 05/21/99 GRANT AMOUNT \$ 488,700

NEW GRANT Y/N Y SUBSEQUENT PHASE Y/N N

PROJECT DESCRIPTION Construct an additional parking area at the

Dark Day Boat Launching Facility to provide 54 vehicle-trailer and 17

vehicle parking spaces.

IF REHABILITATION, WAS EXISTING FACILITY FUNDED BY THE  
DEPARTMENT? Y/N N-Addition IF SO WHAT YEAR Existing facility rehab  
FY 97-98 FY 74-75

HAS DEPARTMENT REP. VISITED SITE? Y/N N

FOR DEPARTMENT USE ONLY:

FOR INCLUSION IN BUDGET FY \_\_\_\_\_ BY \_\_\_\_\_  
DEPT. REP.

CHECK IF FOLLOWING DOCUMENTS ENCLOSED:

RESOLUTION

ENVIRONMENTAL

FEASIBILITY



United States  
Department of  
Agriculture

Forest  
Service

Tahoe  
National  
Forest

631 Coyote Street  
Nevada City, CA  
95959-2250  
530 265-4531  
530 478-6118 TDD  
530 478-6109 FAX

File Code: 1580

Date: **MAY 21 1999**

Attn: Frank Dowd  
Department of Boating and Waterways  
2000 Evergreen St. Suite 100  
Sacramento, CA 95815-3896

Dear Mr. Dowd:

On behalf of the U.S.D.A Forest Service I am requesting the California Department of Boating and Waterways to participate in a joint project with the Tahoe National Forest to construct an additional parking area at the Dark Day Boat Launching Facility, New Bullards Bar Reservoir.

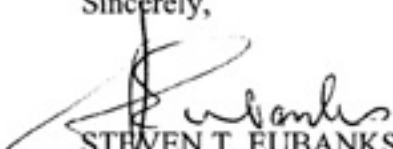
The proposed parking area would provide spaces for 54 vehicles with trailers and 17 single vehicles. This is in addition to the existing parking capacity of 60 vehicles with trailers and 40 single vehicles, which is exceeded almost every weekend during the normal boating season. The proposed project is located entirely on National Forest System lands.

Enclosed you will find three copies of the grant request, which include:

- 1) Grant application.
- 2) Copy of this transmittal letter.
- 3) Copy of the documentation of the environmental analysis conducted for the proposed project, which is teared to the Yuba River Development Project FERC No. 2246 Revised Exhibit R (Recreation Plan), approved February 4, 1991.
- 4) Feasibility Report.

If you have any questions feel free to the Project Manager, Joe Chavez, at (530)288-3231.

Sincerely,

  
STEVEN T. EUBANKS  
Forest Supervisor

enclosures



UNITED STATES  
DEPARTMENT OF  
AGRICULTURE

FOREST  
SERVICE

Downieville RD

---

FILE CODE: 1950  
ROUTE TO:

Date: April 15, 1998

SUBJECT: DARK DAY PARKING FACILITY CONSTRUCTION

TO: FILES

The Revised Exhibit R for the Yuba River Development Project, Federal Energy Regulatory Commission(FERC) No. 2246, was approved by FERC on February 4, 1991. Licensee proposed recreation facility development approved by FERC in Exhibit R includes the construction of a 70,000 square foot parking lot near Dark Day Boat Ramp. A site specific environmental analysis was conducted for this action. Members of the District team had no concerns with the proposed project. It was determined through the environmental analysis that there were no extraordinary circumstances existing with this proposal that might cause the action to have significant effects. Specifically, this determination is based upon the absence, among others, of the following:

1. Steep slopes or highly erosive soils.
2. Effects on threatened or endangered species or their critical habitat.
3. Flood plains, wetlands, or municipal watersheds.
4. Congressionally designated areas, such as wilderness, wilderness study areas, or National Recreation Areas.
5. Inventoried roadless areas.
6. Research Natural Areas.
7. Native American religious or cultural sites, archaeological sites, or historic properties or areas.

All management practices and activities of the action are consistent with the management direction, including standards and guidelines, in the final Land and Resource Management Plan for the Tahoe National Forest (June 14, 1990), as amended, and provisions, which were developed in accordance with the National Forest Management Act of 1976. 16 USC 1604(i) and 36 CFR 219.10(e).

An archaeological survey and a report have been completed. There are no sites within the project area.

No known Federally listed Threatened or Endangered plant species or Region 5 Forest Service Sensitive plants have been identified with the project area.

No known Federally listed Threatened or Endangered species have been identified within the proposed project area. Habitat for several listed species may be impacted but a biological evaluation has determined that whereas this project may affect individuals it is not likely to result in a trend toward Federal listing or loss of viability for these species.

Mitigation measures include a limited operating season with a closure between March 1 and August 31 during the breeding season for spotted owl and northern goshawk. Consultation with wildlife biologist to determine a monitoring plan for bald eagles for activities after November 15. Notifying contractor of the possibility that turtles may be in the area. If turtles are sighted during construction, the contractor will take the following measures to protect them:

- a. The contractor should notify the COR of the time and location of the sighting.
- b. Move the turtle 50 feet below the site, closer to the Reservoir.

Specific information on species listed and there relationship to this project may be found in the Biological Evaluation.

  
Andy Steele  
Recreation Planner

  
JEAN M. MASQUELIER  
District Ranger

## **1.0 GENERAL DESCRIPTION OF SURROUNDING AREA**

The proposed Project is to add needed parking area at the Dark Day Launching Facility, which is located on New Bullards Bar Reservoir in northeast Yuba County on the North Yuba River, about 28 miles east of Marysville-Yuba City (Plate 1). The proposed Project and the Dark Day Boat Launching Facility are located on National Forest System lands managed by the Tahoe National Forest. From Sacramento take 1-80 to Highway 49 at Auburn, go North on 49 through Grass Valley-Nevada City to Camptonville, go west on E-20 (Marysville Road) to the turn off to the Dark Day launching facility. The access road is about 1/2 mile long. New Bullards Bar Reservoir has one other boat launching facility at Cottage Creek, which is located at the southwest end of the dam. The area surrounding the Project is described below.

### **1.1 Climate**

The climate at the site is typical of the low mountain areas of California. Summers are hot and dry, while the winters are mild and wet. Winter temperatures are commonly in the thirty to fifty degree range, while summer temperatures often reach 100 degrees. Precipitation is about 60 inches per year, predominately in the form of rain. Due to weather patterns the predominate boating recreation season on New Bullards Bar Reservoir extends from about early May through mid October. However, persons fishing will be found all year round on the reservoir.

### **1.2 Population Centers**

The closest towns to New Bullards Bar Reservoir are Camptonville and Challenge, five miles west and three miles east respectively. Larger urban areas from the reservoir include Oroville, approximately 25 miles to the north, Marysville-Yuba City, approximately 35 miles to the southwest, and Grass Valley-Nevada City, approximately 25 miles to the south. The closest major metropolitan area is Sacramento, which is approximately 85 miles to the southwest, about a one and one half hour drive.

### **1.3 Recreational Opportunities Near New Bullards Bar Reservoir**

Two of the most concentrated outdoor recreational areas north and south of New Bullards Bar Reservoir are: Lake Tahoe to the southeast and Lake Shasta to the North. New Bullards Bar Reservoir is surrounded by the Tahoe and Plumas National Forests. These Forests provide ample opportunities for outdoor recreation, such as: boating, sailing, swimming, water sports, camping, fishing, hiking, biking, off-road vehicle use, rafting, recreational mining, site-seeing, picnicking, hunting, horseback riding, and driving for pleasure (Highway 49 is a California Scenic Highway and a National Forest Scenic Byway).



Other lake related opportunities in the area of New Bullards Bar Reservoir are listed in Table 1.30.

Table 1.30

<b>Body of Water</b>	<b>Surface Acres</b>	<b>Developed Boat Launching Facilities</b>	<b>Popular Water Related Recreational Opportunities</b>	<b>Operator</b>
<b>Lake Almanor</b> (100 miles northeast of NBBR*)	28,000	marina & ramps	skiing, boat rentals, jet skiing, fishing, swimming, pleasure boating	PG&E
<b>Lake Oroville</b> (32 miles southeast of NBBR)	15,500	2 marinas, 9 ramps & 10 car top boat launches	skiing, house boating, jet skiing, boat rentals, fishing, swimming, pleasure boating	California Department of Parks and Recreation
<b>Little Grass Valley Reservoir</b> (50 miles northwest of NBBR)	1,615	3 ramps	fishing, sailing, jet skiing	Oroville-Wyandotte Irrigation District
<b>Sly Creek Reservoir</b> (30 miles north of NBBR)	652	1 ramp, 1 cartop launch	fishing, sailing	Oroville-Wyandotte Irrigation District
<b>Merle Collins Reservoir</b> (12 miles southwest of NBBR)	1,000	1 ramp	fishing, skiing between 5/15 and 9/15 (house boats and personal watercraft are not allowed)	Browns Valley Irrigation District
<b>Englebright Reservoir</b> (24 miles southwest of NBBR)	815	marina, 2 ramps	boating for pleasure, houseboats and rentals, fishing, skiing	U.S. Army Corps of Engineers
<b>Jackson Meadows Reservoir</b> (40 miles east of NBBR)	1,000	2 ramps	fishing, pleasure boating (houseboats not allowed)	Nevada Irrigation District

<b>Scotts Flat Reservoir</b> (28 miles south of NBBR)	750	marina, 2 ramps	fishing, skiing, pleasure boating, boat rentals (houseboats and jet skis not allowed)	Nevada Irrigation District
<b>Rollins Reservoir</b> (32 miles south of NBBR)	825	marina, 2 ramps	fishing, skiing, pleasure boating, boat rentals (houseboats and jet skis not allowed)	Nevada Irrigation District
<b>Camp Far West Reservoir</b> (36 miles southwest of NBBR)	2,000	marina, 2 ramps	fishing, skiing, swimming,	South Slitter Water District
<b>Folsom Lake</b> (60 miles south of NBBR1)	11,450	marina, 7 ramps	skiing, house boating, jet skiing, boat rentals, fishing, sailing, swimming, pleasure boating	California Department of Parks and Recreation

\* = New Bullards Bar Reservoir

A comprehensive recreation resource study was conducted for New Bullards Bar Reservoir to develop the Revised Exhibit R (Recreation Plan required under FERC No. 2246), approved February 4, 1991. This study, which utilized customer use surveys in its development, describes some of the attributes of the reservoir that have attracted a steady increase in both daytime and overnight users to it, even during drought periods and when other lakes were seeing a decrease in overnight camp use. *"New Bullards Bar Reservoir provides the visitor with a large lake in a mostly undeveloped, scenic setting, yet with easy road access. The lake is particularly attractive to those seeking motorized boat oriented recreation. New Bullards Bar Reservoir offers a variety of boating experiences like other lakes, but provides a scenic setting of forests and remote canyons. At New Bullards Bar Reservoir, a visitor can chose to participate in the activity of their choice in either a developed setting near services or at a remote site offering solitude and a more primitive experience. "*

## 2.0 GENERAL DESCRIPTION OF PROPOSED PROJECT SITE

The Project is located approximately 500 feet west of the top of the existing Dark Day Boat Launching Facility and parking area, which is centrally located on the south shore of the New Bullards Bar Reservoir. The Dark Day Launching Facility is owned and operated by the U.S.D.A Forest Service. The immediate area around the Project site is described below.

## **2.1 New Bullards Bar Reservoir**

New Bullards Bar Dam was completed in 1969 by the Yuba County Water Agency for the purpose of providing water for power generation, irrigation and domestic needs, flood control, and recreation.

The reservoir behind the 2,350 foot long 635 foot high concrete arch dam is over 13 miles long with 55 miles of shoreline at a full pool elevation of 1,955 feet. The minimum pool elevation is 1,735 feet. The normal water level fluctuation is 150 feet. It has a maximum surface area of 4,760 acres and a capacity of 960,000 acre feet of water. All the shoreline is publicly owned, however, the sides of the reservoir are typically steep and public access for boating and recreation is limited to two developed launching facilities and one undeveloped walk-in access at the end of Moran Road.

New Bullards Bar Reservoir is currently used for many types of boating and other recreation. Some speed limit restrictions are posted on the reservoir for public safety, near launching facilities and mooring areas, and for fisheries protection in certain coves. Recreation activities include: water siding, pleasure boating, houseboating, jet skiing, warm and cold water fishing, swimming, lake-side camping, developed camping, sailing, picnicking, hiking, and biking. The majority of the recreational use occurs between early May and mid October, though fishing and biking activities occur year round.

## **2.2 Existing Dark Day Boat Launching Facility**

The Dark Day Boat Launching Facility is located centrally on the south shore of the New Bullards Bar Reservoir, four miles north of the dam. The facility, most of which was constructed in 1969, is comprised of the following features:

- 1,360 foot long concrete boat ramp
  - (1) upper 400 feet three lanes,
  - (2) middle 600 feet two lanes,
  - (3) lower 360 feet single lane.
- 60 foot long boarding float.
- Four-unit vault toilet.
- 2 picnic tables.
- 60 vehicle-trailer and 40 vehicle parking spaces.
- Associated signs and bulletin boards, including California Department of Boating and Waterways partnership sign.
- In the summer of 1999 (through a Cal. Dept. of Boating & Waterways grant);
  - (1) solar powered safety lighting will be installed at the top of the ramp,
  - (2) solar powered safety lighting will be installed both inside and outside of the restroom,
  - (3) the restroom will be made accessible to persons in wheelchairs,
  - (4) odor problems in the restroom will be reduced through active solar powered ventilation, and

(5) the existing parking lot will be sand slurry sealed and restriped;

- In the fall of 1999 (through a Cal. Dept. of Boating & Waterways grant) a debris diversion structure will be built to divert sediment away from the ramp, and a diversion ditch, constructed in FY 1984-85 under another project, will be cleaned out.

Previous California Department of Boating and Waterways actions at this facility include:

- Repave and stripe existing parking lot, extend the launching ramp, provide erosion control, improve restroom facility, and install boarding float (FY 1974-75).
- Erosion control alterations to hillside above the ramp (FY 1984-85).
- Construct new boarding float and repair single rail guidance system (FY 1986-87).

### **2.3 Other New Bullards Bar Reservoir Facilities**

Launching Facilities:

- Cottage Creek - Located along the southwest corner of the dam, 2 lane 900 foot long concrete-paved boat ramp, four-unit vault toilet, picnic table, 56 vehicle-trailer parking spaces;
- Dark Day (described above);

Camping (by reservation only, through marina):

- Schoolhouse Campground - Located approximately three miles north of the dam north off Marysville Road (0.5 miles from shoreline), 56 camping units (44 single-unit, 11 double, 1 triple);
- Dark Day Campground - Located approximately four miles north of the dam on Dark Day Road (0.2 miles from shoreline), 16 single family camping units;
- Hornswoggle Group Campground - Located approximately three miles north of the dam south off Marysville Road (0.6 miles from shoreline), 5 group camping units (4- 25 person capacity, 1- 50 person capacity). There currently are plans to add one additional group site in the fall of 1999;
- Garden Point Boat Access Campground - Located on the peninsula at the junction of the North Yuba and Willow creek arms of the reservoir, 20 camping units (12 single-unit, 4 double);
- Madrone Cove Boat Access Campground - Located on the west shore of the upper North Yuba arm of the reservoir, 10 single camping units;
- Dispersed Shoreline Boat Access Camping - Undesignated locations along the shoreline, by permit only (44 permits available). These are available only when the water elevation is 15 feet below

treeline, due to fire hazard. Private portable chemical toilets are required (can be rented from manna).

### **Picnic:**

- Dark Day Picnic Area - Located along Dark Day Road from 10 to 40 feet above maximum reservoir surface. There are 14 picnic units;
- Cottage Creek Overflow Campground - Located off of County Road 169 approximately 0.5 miles from its intersection with Marysville Road near the dam. This facility had been closed for a number of years due to low use. It is currently used for overflow camping when shoreline camping is not available (when there is not at least 15 feet from water surface to treeline) and when the other camping facilities are at capacity (most commonly occurs during the Memorial Day weekend). There are 30 single units.

### **Marina:**

- Emerald Cove Marina - Located directly adjacent to the Cottage Creek Boat Ramp on the north side of the dam. The marina consists of a floating general store and snack bar, overnight boat slips (30) and mooring buoys (80 slots), gasoline pumps and a floating dump station. Rental houseboats, fishing boats, and patio boats are available. The marina also handles all the reservations for all the camping permits around the reservoir.

### **Other:**

- Floating Restrooms - There are four two-unit floating comfort stations (vault-type chemical recirculating) located on the reservoir.
- Sunset Vista Point - This scenic point overlooks the dam near the southeast corner of the reservoir. It is also a trailhead for the Bullards Trail. There is four-unit vault toilet and parking for 20 vehicles
- Bullards Trail System - There are over 20 miles of trails that stretch along the southeast side of the reservoir (from Sunset Vista Point to Highway 49 and Marysville Road). Five trails make up the Bullards Trail System. Bullard's Trail runs along the edge of the reservoir about 60 feet from high water. The other trails either parallel Marysville Road or connect these to Bullards Trail. These trails are popular with the campers and mountain bikers.
- Undeveloped Road Access - There are only three public vehicle access points on the reservoir, the two boat launching facilities and Moran Road. Moran Road accesses the west edge of the reservoir at Moran Cove. In the fall of 1999 the facility will consist of a gravel parking area for 6-8 vehicles, bulletin board, and road blockade approximately 300 feet from the maximum water surface elevation. The public can hike down to recreate at the water's edge or can launch water craft that can be carried on foot.
- Associated signs and buoys.

### **3.0 PROPOSED PROJECT**

#### **3.1 Description of the Proposed Project**

The Forest Service proposes the following 2 acre parking area addition to the existing Dark Day Boat Launching Facility (Project):

- Construct an additional asphalt-surface parking area for 54 vehicles with trailers and 17 individual vehicles, appropriate striping and barriers and placement of erosion control on the barren soil surfaces created by the construction (Plate 3).

The proposed new parking area is located approximately 500 feet west of the top of the existing Dark Day Boat Launching Facility and existing parking area, and is adjacent to the Dark Day Camping/Picnic Area (Plate 2). Pedestrian access to the launching ramp will be via an existing trail and a newly constructed trail. The new trail will be completed by the Forest Service at the same time the parking area is to be constructed.

#### **3.2 Construction of Project**

Construction will entail a fair amount of clearing, grubbing, slash and stump disposal and excavation, as level terrain is scarce throughout the New Bullards Bar Area. Excavation and backfill at the parking area will be accomplished by use of standard earth moving equipment with appropriate erosion control measures. Asphalt concrete will be batched commercially off-site, transported over existing roads and placed with standard equipment.

A specific construction schedule is provided below:

ACTIVITY	DATE
Bid Notice	May 1,2000
Receive and Open Bids	June 1,2000
Evaluate Bids	June 15,2000
Award Contract	July 1,2000
Mobilize	July 15,2000
Demobilize	September 30,2000

### **4.0 PROPOSED USES**

The Dark Day Boat Launching Facility provides convenient access at one of the only two places on New Bullards Bar Reservoir where boat launching can take place, access being limited by steep terrain. New

Bullards Bar Reservoir is currently used for many types of boating and other recreation. Recreation activities include: water skiing, pleasure boating, houseboating, jet skiing, warm and cold water fishing, swimming, lake-side camping, developed camping, sailing, picnicking, hiking, and biking.

Some speed limit restrictions are posted on the reservoir for public safety, near launching facilities, mooring areas, swimming area (Moran Cove), narrow canyons (Upper North Yuba Channel), and for fisheries protection in certain coves.

The Project would provide additional needed parking in a convenient location to the boat ramp. As use data indicates, demand for parking has far exceeded the existing parking area, especially on weekends and holidays during the summer and fall.

## 5.0 IMPACT OF PROJECT ON EXISTING FACILITIES

The Dark Day Boat Launching Facility has been open to the public since the completion of New Bullards Bar Reservoir in 1969. Some boat launchings occur year round at Dark Day, however, the typical boating season extends from about early May through mid October. The heaviest use of the ramp, when most parking problems occur, is on weekends and holidays from Memorial Day to Labor Day.

Based on use of the boat launching facility and parking area as monitored by the Forest Service, recreational use has steadily and significantly increased. Data available, starting in 1987, shows approximately 7,000 recreation visitor days (RVDS = a use convention defined as one person conducting an activity for 12 hours) in 1987 at the Dark Day Boat Launching Facility, while 1998 saw approximately 12,500 RVDS. The 1992 season records the highest use at Dark Day Launching Facility of approximately 15,500 RVDS.

The existing parking area at the Dark Day Boat Launching Facility consistently exceeds capacity on weekends and holidays between Memorial Day and Labor Day. The following table displays the number of weekends between these dates that parking capacity is exceeded and the average use on weekends for the season for the past three years:

Table 5.1 Existing Dark Day Boat Launching Facility Parking data (existing capacity 60 vehicle-trailer and 40 vehicle parking spaces).

<b># weekends between Memorial &amp; Labor Days</b>	<b># weekends use exceeded capacity 1996</b>	<b># weekends use exceeded capacity 1997</b>	<b># weekends use exceeded capacity 1998</b>	<b>Average weekend use % of capacity 1996-1998</b>
<b>15</b>	<b>15</b>	<b>12</b>	<b>13</b>	<b>134%</b>

The insufficient parking problem creates other problems in the Dark Day area. For example, when the existing parking facility is full, boaters will often utilize parking that is designated for Dark Day camper?

and day users. Safety is also a concern, as boaters will park along the winding, narrow Dark Day entrance road. This situation can block access for emergency vehicles and is unsafe for pedestrians walking back to the reservoir after parking their vehicle.

During drought years when other popular lakes in the region are low, for example Folsom Lake in 1995 and 1996, New Bullards Bar Reservoir sees significantly more use. In fact during 1995 and 1996 the Dark Day Boat Launching Facility was typically closed at about mid day due to insufficient parking availability on weekends and holidays during the normal boating season.

## **5.1 Customer Survey Results**

A comprehensive recreation resource study was conducted for New Bullards Bar Reservoir to develop the Revised Exhibit R (Recreation Plan required under FERC No. 2246), approved February 4, 1991. This study utilized customer use surveys in its development, and describes three major user groups' (boat fishing, water skiing, and pleasure boating) perception of the crowdedness related to boat ramps:

*"While recreation users indicated that they felt crowded while pursuing their primary activity, the questions regarding sense of crowdedness on the reservoir surface and shoreline failed to indicate where users were feeling crowded. However, a review of user comments indicates a large number of recreationists at New Bullards Bar Reservoir feel crowded at the boat ramps and day use parking facilities. This is further supported by the high occupancy levels consistently recorded at the boat ramps during the recreation season. "*

To address this problem the 1991 Revised Exhibit R calls for new parking areas be developed at both the reservoir's launching facilities. At the Dark Day Boat Launching Facility the Plan calls for approximately 240 additional parking units (a parking unit defines a vehicle with trailer parking space as two units), given the condition that all project lands are cost effective and appropriate for development of parking facilities. This Project would add 125 new parking units in an area that is appropriate and cost effective. The size of the proposed Project was limited by topographic limitations.

The 1991 Revised Exhibit R established an estimated social carrying capacity for New Bullards Bar Reservoir at 420 Boats At One Time (BAOT) based on extensive analysis and public participation. The proposed Project would not result in exceeding the capacity of the reservoir's surface social capacity.

## **5.2 Affect on Other Boat Launching Facilities**

Adding a parking area to increase the parking capacity at the Dark Day Boat Launching Facility by 71 spaces (54 vehicles with trailers and 17 individual vehicle spaces) is not expected to have any impact on other boating areas described in section 1.0.



## 6.0 ENGINEERING FEASIBILITY

The Forest Service has conducted an environmental analysis and topographic survey of the project area. From this information conceptual design and drawings of the Project were made (Plate 3 & 4). All data indicates that the Project is engineeringly feasible.

## 7.0 COST ESTIMATE

An engineer's cost estimate for the Project based on the conceptual drawings (Plates 3 & 4) is shown below.

ACTIVITY	QUANTITY	1999 DOLLARS
<b>Construction:</b>		
Construction Staking	0.48 miles	\$ 5,000
Clearing, Grubing, Burning	2.5 acres	\$ 42,300
Excavation and Embankment	40 hours*	\$ 36,700
6" Aggregate Base	3,346 TN	\$ 107,100
3" Hot Bituminous Plant Mix	1,875 TN	\$ 168,800
Culverts	30 feet	\$ 1,200
Erosion Control	1.5 acres	\$ 2,500
Parking Lot Striping	Lump Sum	\$ 5,500
Waterline Relocation	600 feet	\$ 5,400
Mobilization (7%)	Regional Cost Guide	\$ 22,500
Signs	3	\$ <u>500</u>
Design & Contract Admin. (8%)	SUBTOTAL	\$ 397,500 <u>\$ 31,800</u>
Contingency (10%)	SUBTOTAL	\$ 429,300 <u>\$ 42,900</u>
Escalation for one year @ 3.5%	SUBTOTAL	\$ 472,200 <u>\$ 16,500</u>
	TOTAL	\$488,700

\* 3 D7 dozers, Sheeps foot. Motor Grader, Water Truck plus personnel

## **8.0 ECONOMIC JUSTIFICATION**

Addition of the improvement will increase the number of recreationists by 71% who can use the Dark Day Launching Facility at any one time by increasing the parking area from 100 spaces to 171 spaces.

### **8.1 Benefits**

The Forest Service expects that the additional parking area would be used, on the average, at about 50% capacity on weekends and holidays during the normal boating season. This relates to an additional 2,700 boat launching recreationists utilizing the new parking area per year. Total benefits over the 20 year life of the Project are estimated at \$1,179,750 (*see Application for Boat Launching Facility Grant An Improvement Project* page 13 for additional detail).

### **8.2 Cost**

Estimated construction costs for the Project are about \$488,700. This amount, plus the estimated operating costs over the 20 year life of the Project total \$646,650 (*see Application for Boat Launching Facility Grant An Improvement Project* page 13 for additional detail).

### **8.3 Benefits Versus Costs**

Benefits of constructing and operating the Project exceed the cost by a factor of about 1.82. In addition, the recreational quality for both boaters and other recreationists would improve from reduced crowding and reduced conflicts over parking availability at the Dark Day complex. There will be less frustration to the boating public in being able to find approved parking spaces. Resources would be better protected due to the fact that vehicles will not park on soft vegetated roadside shoulders, and less personnel time will be spent monitoring and repairing these damaged areas.

## **9.0 FINANCIAL FEASIBILITY**

The Yuba County Water Agency is committed, under its FERC license NO. 2246, to providing and maintaining recreational opportunities on New Bullards Bar Reservoir. Because the reservoir is located largely on the Tahoe National Forest, the Forest Service is also committed to providing quality recreational opportunities at the reservoir. These two agencies have participated in a partnership for over 30 years to provide these recreational opportunities. These two agencies have the financial capability of and commitment to operate and maintain the Project for 20 years.

## **10.0 LEGAL DESCRIPTION**

The project legal description is as follows:

A 2.5 acre parcel located in the N1/2, NW 1/4, SE 1/4, SE 1/4, NW 1/4 Section 17, T.18N., R.8E., MDM.

**Application for  
Boat Launching Facility Grant  
An Improvement Project**

**Determination of Project Benefits**

1. Estimate the Annual Number of Boat Launchings at the Existing Facility and Enter the Number Here. 10,000
2. Multiply the Annual Number of Boat Launchings (Line 1) by 3 and Enter the Number Here to Estimate the Total Number of User Days 30,000
3. Multiply the Number of User Days (Line 2) by \$6.50 and enter here. 195,000
4. Estimate the Annual Number of Boat Launchings at the Improved Facility and Enter the Number Here. 12,700
5. Multiply the Annual Number of Boat Launchings at the Improved Facility (Line 4) by 3 and Enter the Number Here. 38,100
6. Multiply the Number of User Days (Line 5) by \$7.50 and enter here 285,750
7. Subtract the Number on Line 3 From the Number on Line 5 and Enter the Result Here. 90,750
8. Multiply the Number Entered on Line 7 by 20 and Enter Here 1,815,000
9. Multiply the Number on Line 8 by .65 to Estimate the Benefits Generated by the Improved Project and Enter Here. 1,179,750

**Determination of Project Costs**

10. Enter the Project Development Costs Here. 488,700
11. Subtract the Annual Number of Boat Launchings of the Improved Facility (Line 3) from the Existing Boat Launchings (Line 1) and Multiply by \$4.50 to Estimate the Annual Operating Costs: 12,150
12. Multiply the Annual Operating Costs (Line 11) by 20 to Find the Total Operating Costs Over the Life of the Project and Enter Here. 243,000
13. Multiply the Total Operating Costs (Line 12) by .65 and Enter Here. 157,950
14. Add the Project Development Costs (Line 10) and the Total Operating Costs (Line 13) to Find the Total Project Costs and Enter the Number: 646,650
15. Divide Total Project Benefits (Line 9) by the Total Project Costs (Line 14) and Enter the Result Here (this Number Must be Greater than 1.00). 1.82

**Supplemental Grant Application Information**

Indicate Below the Fees a Person Must Pay to Launch a Boat:

Launching (\$5.00 Maximum)	0
Parking	0
Entrance	0
Fishing	0
Other ** (Identify Below)	0

\*\*Other Fee Explanation:

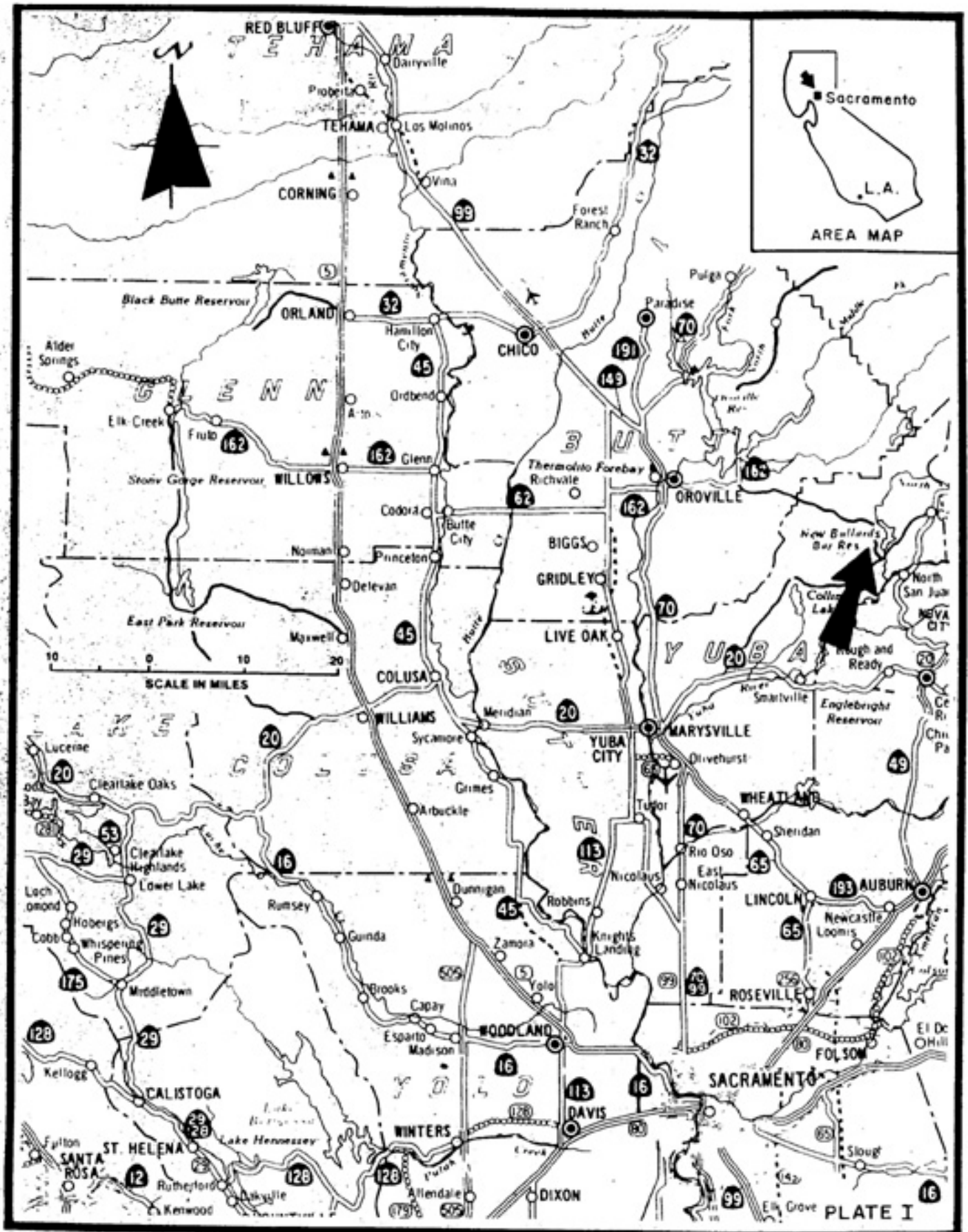
Indicate Below with An "X" in the Appropriate Column Whether Boaters Will Be Able to Engage in the Following Activities at or Near the Launching Facility:

Activity	Yes	No
Swimming	X	
Fishing	X	
Waterskiing	X	
Camping	X	
Hiking	X	
Bicycling	X	
Picnicking	X	

If the Answer to Any of the Above is No, Please Provide Explanation:

**PLATE I**

**GENERAL LOCATION MAP**



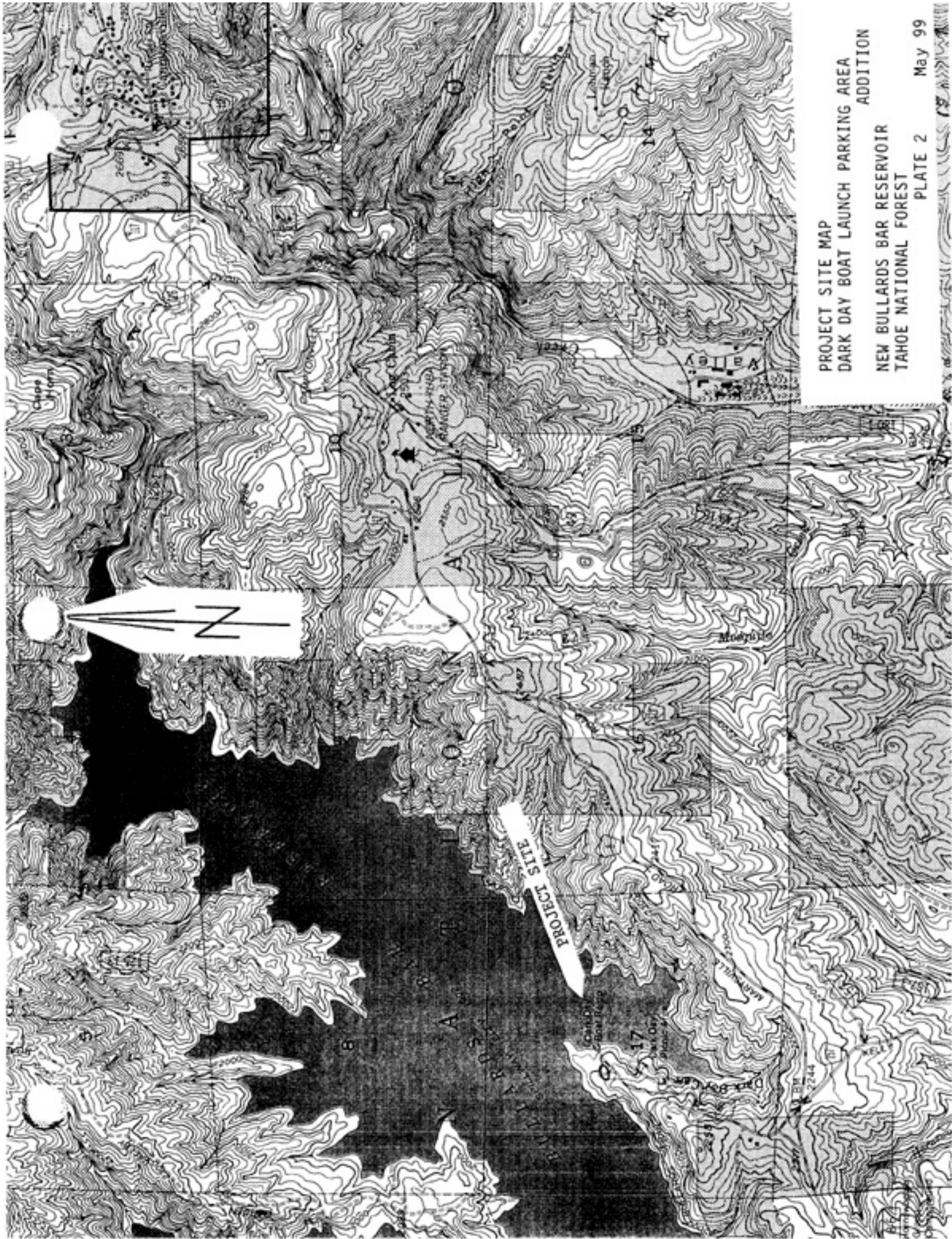
PROJECT LOCATION MAP  
 DARK DAY BOAT LAUNCH PARKING AREA  
 ADDITION

NEW BULLARDS BAR RESERVOIR  
 TAHOE NATIONAL FOREST

# **PLATE 2**

## **PROJECT SITE MAP**





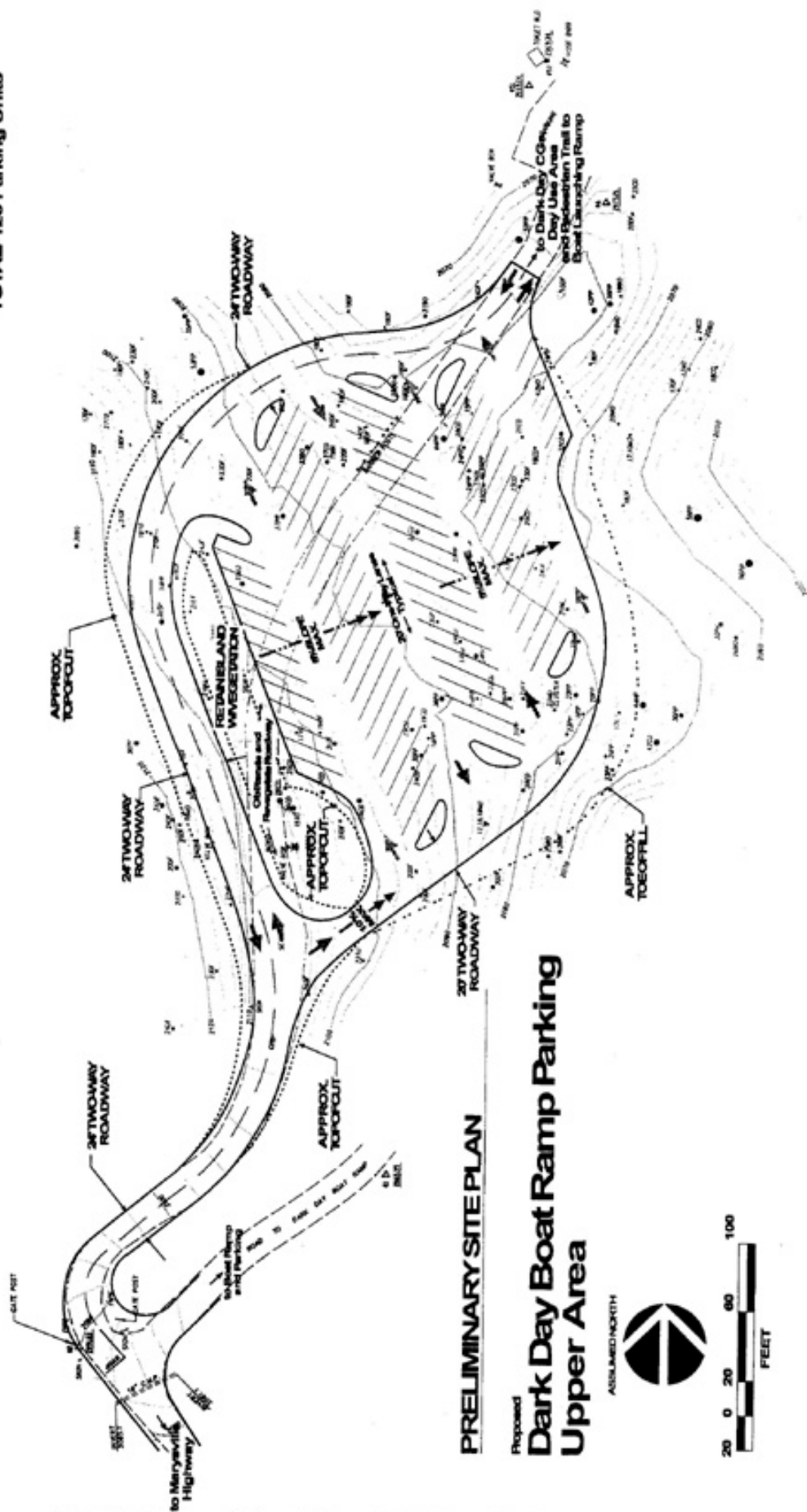
PROJECT SITE MAP  
DARK DAY BOAT LAUNCH PARKING AREA  
ADDITION  
NEW BULLARDS BAR RESERVOIR  
TAHOE NATIONAL FOREST  
PLATE 2 May 99

# **PLATE 3**

## **PROJECT LAYOUT MAP**

**Notes:**

- 54 ea. 10' x 40' spaces
  - 12 ea. 10' x 30' spaces
  - 5 ea. 10' x 20' accessible spaces
- TOTAL-126 Parking Units**



**PRELIMINARY SITE PLAN**  
**Proposed**  
**Dark Day Boat Ramp Parking**  
**Upper Area**