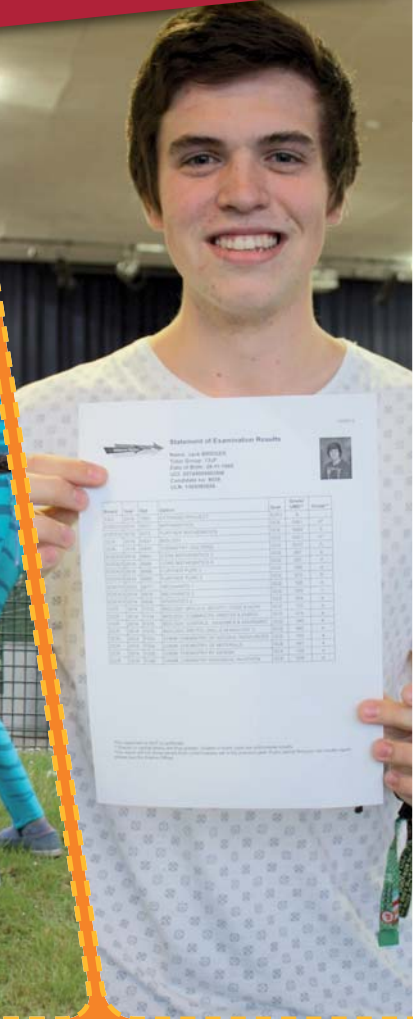


msn

www.msnsixth.com

The **BEST** choice of courses in the area...



“ Raising aspirations...
building better futures ”

6TH FORM

Midsomer Norton Sixth Form

Serving... Midsomer Norton | Radstock | Paulton | Bath | Frome | Shepton Mallet | Wells



6TH FORM



The Midsomer Norton Sixth Form

Aims To:

- ▶ Provide a fully comprehensive curriculum
- ▶ Cater for every student's individual needs
- ▶ Enable all students to achieve appropriate qualifications
- ▶ Foster self-esteem and the enjoyment of learning
- ▶ Create a supportive, caring community
- ▶ Enable students to progress confidently onto the next stage of their careers



RESULTS 2015

Students received an average of AAB per student!

welcome to the sixth form

► **WELCOME** to the Midsomer Norton Sixth Form. Our aim is to provide the guidance and support necessary to ensure you succeed on your chosen Post-16 courses. We also offer a wide range of fresh experiences designed to allow you to develop into confident individuals equipped with the skills and independence to lead fulfilling lives.

We take great pride in your success and want to ensure, no matter what your ability and background, that you will enjoy your time here and succeed in realising your potential.

If you want to know more about the Sixth Form please contact Mrs Ward (Director of Sixth Form) and in the meantime we hope this information will give you a flavour of things to come.

► **OVER 40 COURSES**

The greatest attraction of the Midsomer Norton Sixth Form is the quality and quantity of courses on offer. You can choose from over 40 courses including AS and A levels, BTECs and Cambridge Pre-U Courses. With so much choice, you may need some advice on the combination of courses that will best fit your interests, abilities and ambitions. To do this, find out about the courses that interest you, discuss the opportunities at home over the next month and check the advice in this prospectus.

► **A FRESH WAY TO STUDY**

In the Sixth Form, you will study subjects in depth. You are more responsible for your learning and creativity, for the direction of your studies and for planning your private study. In most courses, much of the work is done in your own study time.

The students around you are well motivated, and the emphasis is more on working with your teachers than working for them.

This style of teaching and learning leads to you becoming more self-confident, articulate, and for you to take ownership of your own learning.

► **DESTINATIONS**

We are exceptionally proud that we can ensure that you will have both a fantastic time in the Sixth Form, and also a clear plan and destination at the end of your time here.

In 2015, 100% of all Year 13 students went on to their first choice destination, whether that was an apprenticeship, a job or a place at university or college.

“ The Sixth Form is an experience we'll remember for the rest of our lives... ”

Year 13 Student

experience & opportunities

WIDENING YOUR EXPERIENCE

Important as academic achievement is, you will find there is much more to life in the Midsomer Norton Sixth Form.

You will have the opportunity in the Summer Term of Year 12 to work with Bristol University to complete an Extended Project which is equivalent to an AS level. This allows you to produce an in-depth analysis of an area that particularly interests or inspires you. It will allow you to develop the independent learning and research skills that higher education institutions and employers desire.

You will also have the chance to take part in inter-tutor group sports competitions. As well as participating in a wide range of sporting activities, a large number of students are involved in the most challenging Ten Tors expeditions and Duke of Edinburgh Awards.

Twenty five students went to Vercors National Park near Grenoble in France during the summer of 2015 to complete their Duke of Edinburgh Gold expedition – a truly unique experience. In 2016, students will have the opportunity to complete this in the Italian Alps.

The creative arts, sports and community programmes offer opportunities which are open to all. You will have the chance to visit theatres, concerts and art galleries throughout the year as well as having the chance to play a lead role in the Sixth Form's musical and

dramatic productions. In the past, Sixth Formers have visited France, Spain, Italy, Poland and Germany. You may wish to get involved with the Sixth Form Council and help arrange Sixth Form events, work with younger students, or to be involved in voluntary activities and events within the wider school community.

You will also have the opportunity to purchase a high quality laptop to use on site and away from the Sixth Form.

Fantastic Facilities

Midsomer Norton Sixth Form offers a wide variety of facilities for Sixth Form students across both sites. These include:

- ▶ Designated Sixth Form Centres at both our Norton Hill and Somervale sites offer students first class facilities. Students now have their own dedicated independent study area on both sites.
- ▶ ICT Suites with interactive screens
- ▶ Sports Hall and Astro Turfs on both sites
- ▶ Extensive specialist facilities in Science and Technology, including 3D printer
- ▶ Sixth Form libraries on both sites
- ▶ Business Academy
- ▶ Specialist Drama performance areas
- ▶ Music performance rooms and Music Tech areas
- ▶ Specialist Media Suites, including TV and Radio studios
- ▶ Dance studio



- Student ▶ Matt
Courses Studied ▶ Psychology, Biology and PE
Post Sixth Form ▶ To study Paramedic Science at university

“The sixth form staff have offered me many opportunities to get involved including work experience focussing on my possible future profession. The teachers are always there on hand and the sixth form centre offers a perfect working environment for you and your friends.”



“ Students are provided with good information, advice and guidance. No recent leavers are classed as 'not in education, employment or training' and this is a testament to the quality of Post-16 provision. ”

Ofsted



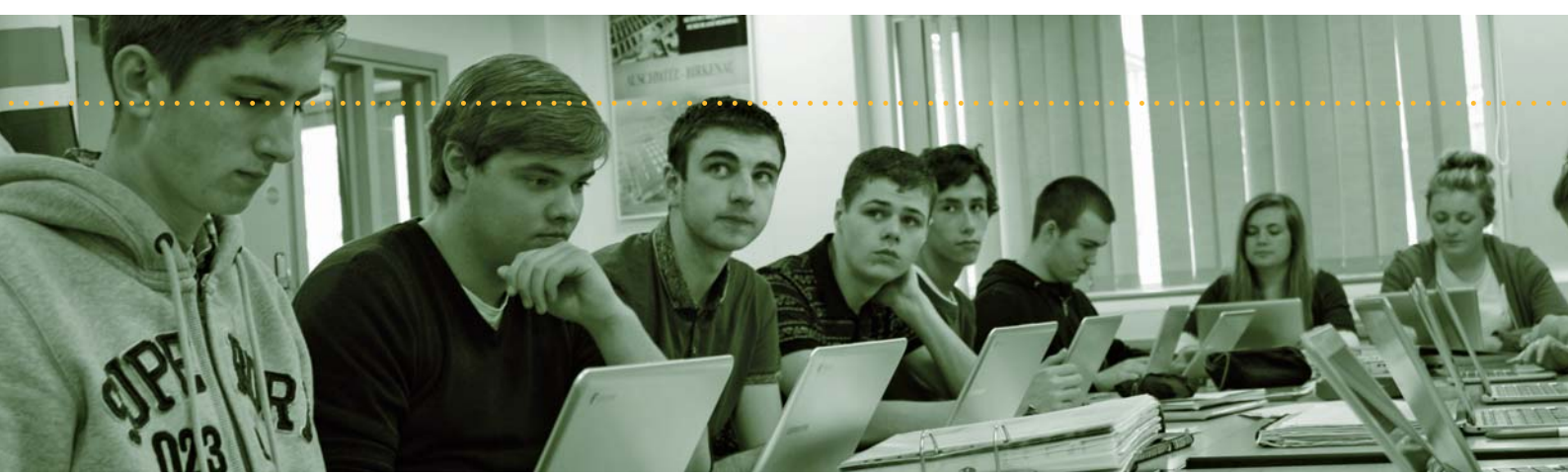
“There's certainly no limit when it comes to opportunities; everyone finds something they can engage with whether that's Gold D of E or musical productions and I think that culture of inclusion is what really brings out the best in us.”



Student ▶ Rebecca

Courses Studied ▶ Mathematics, Further Mathematics, Chemistry, Biology and History

Post Sixth Form ▶ Gap year working in an overseas hospital and then study medicine



sixth form curriculum

COURSE SUMMARY

Advanced Level AS

These are one year courses and continue your academic study after GCSE's. The standard is between GCSE and traditional A levels.

You can choose to continue subjects you have enjoyed at GCSE or take new courses. Although subject specific criteria varies across courses, you would normally have achieved at least a grade B at GCSE in the subjects you hope to study.

BTEC Nationals

BTEC Nationals are the "real world" equivalents of A levels. These Level 3 qualifications are the most popular vocational qualification in UK further education, recognised and respected world-wide and valued by universities as well as employers. They also enable you to go on to study for an Honours degree. You can take a BTEC Level 3 certificate in Year One and then you can choose to continue into Year Two and achieve a BTEC Subsidiary Diploma. You would normally need a C grade at GCSE to complete these courses. Further information for entry requirements can be found in the Course Outline Booklet.

A Level

Study for these begins at the start of Year 12 and continues into your second year in the Sixth Form. All exams for this course are at the end of Year 13. The final A level grade can be used to enter Higher Education.

Cambridge Pre-U Course

In September 2009 we became the first and only state school in the area to be approved to run the Cambridge Pre-U Course. It has proven to be highly successful with students achieving outstanding results. This course is designed to offer students a linear approach to study with opportunities for more in-depth analysis. The programme has been identified by the Russell Group of universities as the ideal preparation for study at their institutions. More information on the Pre-U Course is available on page 8.



Student
Courses Studied
Post Sixth Form

Taryn

Business Management Pre-U, Business Enterprise and Entrepreneurship BTEC, Sociology and ICT

To study Film or Television Production at university

"The best thing about sixth form is being able to choose and do the subjects that interest you and you enjoy the most."

Creative & inspiring teaching...

Year 13 Student

introduction to A levels

▶ AS LEVELS

These are one year courses. Each AS course contains two or three modules. You will take the final exams in June of Year 12.

Some AS levels count towards the full A level, these are Mathematics, Further Mathematics and Graphics. All other subjects are one year courses only and do not contribute to your overall A Level grade.

▶ A LEVELS

These are two year courses. You can pick these as up to three of your four Year 12 options. Each A level course contains two or three modules. You will take the final exams in June of Year 13.

GCSE English Language and Maths
Retake classes are available if you need to improve your grade for these subjects.

“Students are provided with a rich curriculum, matched well to their needs and aspirations.”

Ofsted

▶ ENRICHMENT COURSES - YEAR 13

In Year 13, you will have the opportunity to complete the Cambridge Pre-U Global Perspectives Short Course. This gives you the opportunity to look at global issues as well as to hone the critical thinking skills valued by universities, particularly for courses such as Law and Medicine. You will also have the opportunity to complete an extended essay in your chosen subject. This course is highly valued by universities, allowing them to identify the students with the greatest potential through their demonstration of these skills.

Extended Project

You can choose this course as part of your curriculum in Year 13. You can complete a project in any area that interests you.

Students have completed projects on a wide variety of topics, from 'What Position should Sharia Law have in the UK?' to 'Medical Negligence and its Impact on Society'. This is equivalent to an AS Level, and is highly regarded by universities as it allows you to demonstrate your passion for a subject you may want to study and will also enable you to develop your ability to research and work independently.

Grades A* to E are all pass grades

Note: The A* grade has been introduced by the Government to reward students who gain 90% or more in their A2 modules.



what makes us unique...

HARVARD UK

The Sixth Form has been chosen by America's Harvard University to be the link Sixth Form in the South-West, developing specialist skills amongst our staff in supporting students in applying to US universities. We are also keen that students have a chance to expand their horizons beyond traditional study and offer students the opportunity to travel beyond the local area to locations such as Berlin and Poland.

Each year students successfully achieve places at US universities. In 2014, our first student achieved a place at Harvard University.

TOP UNIVERSITY SUPPORT PROGRAMME

The Sixth Form also offers students the opportunity to take part in a specialised programme to help them to be successful in applications to both Russell Group and Oxbridge Universities. In 2015, 35% of our leavers went to Russell Group universities as a result of this programme. Destinations ranged from Cambridge University and Imperial College London to Bristol University.

DIRECT INTO WORK

In response to the changing economic climate and students' desire to go straight into the workplace we have designed a specific Direct into Work Programme

to help students prepare themselves for this. This includes individual mentoring and guidance, an opportunity to take part in the Business Academy and a specialist Business Administration course. This considered approach to students' futures has meant that we have achieved a much envied 100% success rate, with all our students leaving the Sixth Form with clear destinations.

Some of the opportunities on offer:

- ▶ Sutton Trust Summer Schools in the USA and UK
- ▶ Access to Bristol - university experience course
- ▶ Nutrition and Dietetics pre-university day at the Royal United Hospital, Bath
- ▶ University of Lancaster Law Conference
- ▶ Hospitality apprenticeship experience with Hilton
- ▶ Oxford Law Open Day
- ▶ Oxford University Summer School
- ▶ UWE (Bristol) Summer School
- ▶ Airbus apprenticeship experiences
- ▶ HE workshops at the University of Bath in areas such as Sports Therapy, TV Production, Robotic Computing, Motor Sport Engineering and a day at Bristol Barristers Chambers

unique



"The best thing about the Sixth Form is the friendly atmosphere both in the Sixth Form Centre and in lessons."

Student ▶ Sam

Courses Studied ▶ Chemistry, Physics, Mathematics, Further Mathematics and History

Post Sixth Form ▶ To complete a Chemistry degree at university



bath dance college

► Midsomer Norton Sixth Form is pleased to work in partnership with the (BDC) Bath Dance College to offer students a unique opportunity to complete a professional vocational performing arts course together with a full time Level 3 and 4 qualification.

Offering students the opportunity to continue their academic journey, this vocational course covers all areas of the performing arts from management through to performance, preparing students for the professional performance world or alternatively higher and further education.

Students study all aspects of the performing arts and are skilfully guided through the Level 3 and 4 qualifications. The two year course starts by concentrating on the Level 3 qualification which is based upon 18 different modules through which students develop their skill base. The course culminates in the second year with a devised solo performance, completing the level 4 diploma in Musical Theatre.

BDC prepares students for the professional performing arts industry, offering the highest level of training in all aspects of the performing arts. Whether planning on becoming a commercial dancer, actor or musical theatre veteran we encourage students to train and become accomplished in all genres and thus employable as artists and attractive to theatrical agents.

It is our aim at BDC to help students reach their full potential and to provide the training needed to achieve this. Upon graduation students are helped either into the professional working industry or alternatively further education should they so wish.

DANCE

Students receive a fully rounded dance training, taught by some of the countries most celebrated performers. The students are exposed to elite training, focusing on classical ballet, contemporary and commercial dance as well as studying tap, hip hop and street dance.

Students also study choreography, including dance improvisation and choreographic technique.

ACTING

Professionals must be able to act through dance, song and text, making an ability to act essential for work in all areas of the industry. The course will work on improvisation technique, sight reading, screen acting and scene text. The second year of the course focuses on audition technique honing students with the skills they need to 'get the job!'

SINGING

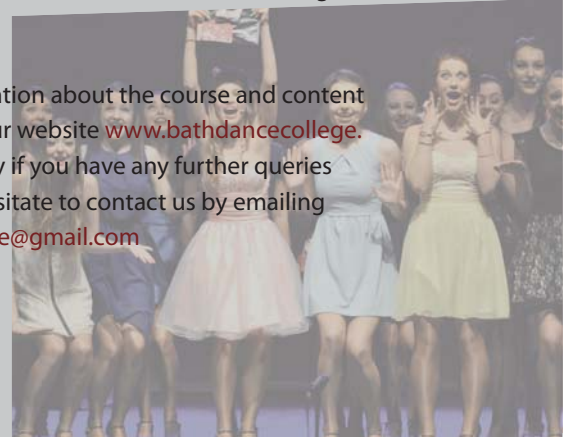
Singing is an essential skill for most wishing to work within the performing arts industry. Upon graduation all students can 'sing' and are prepared to do so if and when required in an audition. Ensemble and private singing lessons will include musical theatre repertoire, vocal development, sight reading and performance technique.

ADDITIONAL

In our belief that graduating students should be educated in all areas of their trade, students also study the historical context of performance as well as performing arts business, giving them the necessary tools to become a freelance performer.

Based within the newly refurbished Victoria Hall, boasting five light and airy studios students are exposed to a professional and amicable learning environment.

For more information about the course and content please refer to our website www.bathdancecollege.com Alternatively if you have any further queries please do not hesitate to contact us by emailing bathdancecollege@gmail.com



| the cambridge pre-u

The Pre-U was designed in partnership with both Oxbridge and the Russell Group – comprising the top 20 UK universities – who are committed to supporting outstanding teaching and research. These institutions demand greater academic rigour and require courses which effectively prepare students for their top courses. The Pre-U has been developed by the CIE, a department of the University of Cambridge and is ideal for students who are considering applying to either the Russell Group or Oxbridge. Pre-U courses are one aspect of our rigorous preparation programme for these students.

WHY THE PRE-U?

In recent years there has been an increase in the number of students applying to university, coupled with an increase in the number of students achieving A grades (a quarter of students achieved an A grade at A level in 2008). This has led to increased competition for places at the top universities and these universities have started to look for more than just A grades at A level. They are looking for students who have independent study skills and thought, and who have gained greater knowledge than simply completing modules. University admissions tutors believe, in many cases, that the Pre-U is an even better preparation than A levels for the challenge of academic degree courses.

The course places a greater emphasis on study skills, as well as the knowledge that will make students successful – both as applicants to university and as students once they are there. Universities value the Cambridge Pre-U and the skills it develops. Universities have also welcomed the clarity of the Cambridge Pre-U grading system, which allows the most selective universities to distinguish between students who may receive the same grade at A level and allows them to identify the truly gifted and talented. It also allows students to show achievement at higher levels than the A grade or A* grade.

▶ The Pre-U has proven to be highly successful, allowing students to go on to study at the top Russell Group universities, such as University College London, University of Bath and London School of Economics. The results students are achieving are outstanding, with students achieving D1 grades which is higher than an A* grade!

Unlike other courses, it allows you flexibility in your choice of subjects and for you to be able to personalise your studies. You can take any combination of subjects you like. You can specialise or diversify, depending on where your strengths and interests lie.

The Pre-U has been designed to inspire, challenge and reward students. It takes individual learning seriously and enables you to study a programme tailored to suit your own interests, enthusiasm and expertise.

The Pre-U has been awarded a higher point score by UCAS (which processes all university applications).

For more information about the Pre-U please see the leaflet inserted at the back of this prospectus.

pre-u



| the business academy

“It’s hard work but it’s for a good reason...”

Year 13 Student

▶ If you are interested in a career in Business, you can enrol in the Business Academy. This is a unique programme to the Midsomer Norton Sixth Form which has been specially devised to support students wishing to move directly into the world of business after sixth form. As part of your preparation to be the business leaders of the future, you will receive master classes from local and national business gurus.

As a Business Academy student, you will follow a rigorous business-related curriculum. Importantly, these all feature in the National Qualifications Framework and so are recognised for entrance to university or employment. In each case, the curriculum is a deliberate combination of broad-based study and theme-specific units. This ensures you can explore an area of interest while being exposed to a wide range of education and career possibilities. The whole Business Academy class follows the same programme of study which includes the following:

- ▶ A work placement
- ▶ Visiting speakers
- ▶ Business Mentoring
- ▶ Employer-led seminars

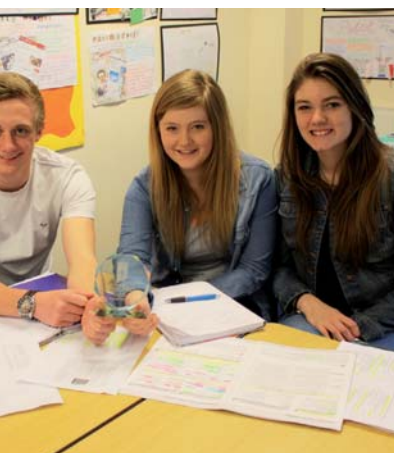
All students taking part in the Business Academy will complete the BTEC National in Enterprise and Entrepreneurship.

To study on the Business Academy Model, you must also be studying one of the following subjects:

- ▶ Pre-U Business Management
- ▶ BTEC National in Business
- ▶ Pre-U Economics
- ▶ BTEC IT

“I have enjoyed the Business Academy programme at Midsomer Norton Sixth Form and the subjects are by far the best I’ve studied. Both the Finance and Business courses have helped me and will continue to help me in the future when managing my own finances or those of a small business.”

Year 13 student



“Opportunities to go and visit Universities throughout the whole year.”

Student ▶ Jacob
Courses Studied ▶ Business Management Pre-U, Business & Personal Finance and German
Post Sixth Form ▶ University to study International Business Management



course guidelines

▶ If you are aiming to study at AS or A level, it's usually expected that you would achieve at least a grade B at GCSE. To study a BTEC course, you will need a grade C in the subjects you are hoping to study. Detailed course specific requirements can be found in the Midsomer Norton Sixth Form Course Outline Booklet.

Your Study Programme

Study is divided into 60 periods each fortnight. Your

programme will be made up of a combination of the courses you have chosen, together with private study periods.

The tutorial programme is part of the Core Activities that all students participate in. This comprises:

- ▶ Tutor time
- ▶ Assembly
- ▶ Academic tutorial
- ▶ Community service

Year 12 & 13 Courses				
Year 12	AS level These are one year courses. 10 periods per subject per fortnight	BTEC National 10 periods per subject per fortnight	Pre-U Subjects These are two year courses. 10 periods per subject per fortnight	A level These are two year courses. 10 periods per subject per fortnight. You will complete the AS level in the first year and then, if you choose to do so, continue with A level in Year 13.
		↓	↓	
Year 13		BTEC National Can be combined with AS and/or A2 levels 10 periods per subject per fortnight	Pre-U subjects Can be combined with AS and/or A2 levels 10 periods per subject per fortnight	
Students normally choose 4 courses (Students may take 5 if the fifth option is Further Maths or GPR)				

guidelines

Student ▶ Lucy
 Courses Studied ▶ Biology, Chemistry & Psychology and Mathematics
 Post Sixth Form ▶ To Study Neuroscience at a Russell Group University



"The amount of extra support we are given from our teachers outside of lessons is incredible, giving us the best opportunity to achieve our full potential with both our academic and extra curricular activities."

the process

| choosing your courses: the process

1

▶ Stage 1

We recommend that you read this prospectus and the Course Information Booklet carefully, then attend the Sixth Form Open Evening on Wednesday 11th November 2015. Take the opportunity to talk to staff about their subjects and find out what interests you and is appropriate to your needs.

▶ Stage 2

Talk with as many people as possible. You may want to approach:

- ▶ Your parents
- ▶ Your tutor
- ▶ Your subject teachers
- ▶ Sixth Form students
- ▶ Mrs Windsor (Careers Adviser)
- ▶ Director of Sixth Form (Mrs Ward)
- ▶ Deputy Director of Sixth Form (Mrs Fryer)

2

▶ Stage 3

Select your course(s). Fill in your application form with your tutor group and hand it in by Friday 4th December 2015. The deadline for external candidates is also Friday 4th December 2015. All external students will be interviewed. Further information for External Applicants can be found on page 13.

If you are a Norton Hill or Somervale School student, you will be seen by one of our Sixth Form Transition Team to ensure your choices are suitable for your career aspirations.

▶ Stage 4

After the results of your GCSE examinations you will be able to discuss any concerns or changes you might wish to make with either Mrs Ward, Director of Sixth Form or Mrs Fryer, Deputy Director of Sixth Form.

3

4



"Whenever you need help of any kind, there are always teachers that can do so. They want to help you which makes the transition into Sixth Form very easy."



- Student ▶ George
- Courses Studied ▶ Physics, Mathematics, Further Mathematics and Pre-U Economics
- Post Sixth Form ▶ To study Economics at LSE or Durham University

| your tutor and other support

▶ THE TUTOR

Your tutor is central to your progress in the Sixth Form. Your tutor will be the person on the staff who understands your needs and aspirations well and who is best placed to guide, inform and support your academic progress.

Your tutor:

- ▶ Is the first point of contact between teachers, you and your parents
- ▶ Ensures that you make progress and succeed
- ▶ Helps you to overcome any difficulties or problems
- ▶ Organises tutor sessions, writes your references and administers University and College Admission Service (UCAS) procedures

▶ DEVELOPMENT OF LEARNING SKILLS

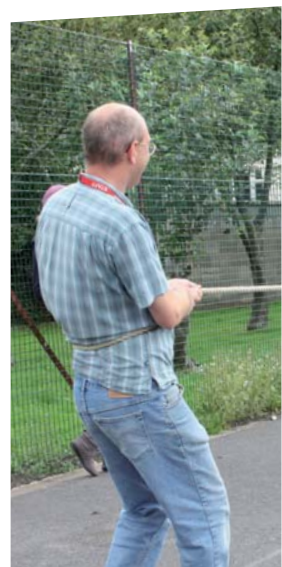
Supported study sessions should take up two-thirds of your private study periods and will allow you to work in the quiet atmosphere of the libraries.

▶ CAREER GUIDANCE

In the Sixth Form you will be offered a full programme of Career and Higher Education guidance including:

- ▶ A range of activities in tutor periods to help with your career choice
- ▶ Opportunities for work experience
- ▶ Visits to universities and colleges
- ▶ A specifically designed preparation programme if you are planning to go directly into work after the Sixth Form
- ▶ A preparation programme to assist those planning to apply for Oxbridge, Medicine or other competitive courses at university, such as the Russell Group.
- ▶ A preparation programme to help you to complete your university application process
- ▶ Information evenings for your parents to help them in supporting you
- ▶ A chance to take part in a wide range of HE opportunities: Access to Bristol, Pathways to Law Course, Maths lectures at Bristol University, visits to Cambridge and Oxford universities
- ▶ An opportunity for you to talk to Medics about their experiences

support & guidance



External applicants are always welcome!

applicants from other schools

▶ Our initial deadline for application forms is Friday 4th December 2015. However, we will consider late applications after this date, but you may find your choices are restricted if you apply late.

Unlike other Sixth Forms, our curriculum is built around the students' requests and allows maximum choice.

We will send you an acknowledgement as soon as we receive your application form. You will be invited to the Midsomer Norton Sixth Form for an interview early in 2016.

After the interview, we will contact you as soon as possible to let you know the result and we hope to offer you a place in the Sixth Form. In July, if you are an external applicant, you will be invited to the Sixth Form Taster Day to meet your teachers and to sample some lessons.

When the GCSE exam results are issued we will send you a letter with details of the start of term arrangements.

Application forms are available from our Sixth Form website: www.msnsixth.com

▶ VISITING THE SIXTH FORM

If you would like to visit the Sixth Form and meet some of the staff and students, or if you have any questions relating to the information in this prospectus, please contact the Sixth Form Administrator on 01761 402280.

SIXTH FORM BURSARY

The 16-19 Bursary Fund is a scheme to help young people facing financial hardship stay on in full-time education after Year 11.

The scheme comprises two parts:

- A full bursary (£1,200 per academic year) for those most in need of support, for example young people in care
- An Educational Support Grant available for those in need of finance to help enable them stay in education

“ You are treated with respect from day one... ”

Year 13 Student

“It is new, different and everyone is friendly.”

Student ▶ Beth

Courses Studied ▶ A Level Psychology and PE, BTEC IT and Web Design

Post Sixth Form ▶ Study PE at Marjons College, Plymouth



proven success

84% A*-C

▶ RESULTS AND DESTINATIONS

In 2015, students achieved a pass rate of 100% with 37% of all results at either A* or A grades. Over 63% of students achieved A*-B grades.

Students obtained average grades of AAB, with 84% of students scoring A*-C grades..

Outcomes

This year students have left to study a range of courses in Higher Education, as well as to start jobs with training.

They include, among many others:

- ▶ Imperial College, London – Medicine
- ▶ Clare College, Cambridge University – Mathematics
- ▶ LSE, London – Economics and Economic history
- ▶ Exeter University – Biological Sciences
- ▶ Durham University – Modern Languages
- ▶ Bristol University – Psychology
- ▶ Sheffield University – Biology
- ▶ Lancaster University – History
- ▶ University of Sussex – International Relations
- ▶ Imperial College, London – Biological Sciences
- ▶ University of Westminster – Politics
- ▶ Southampton University – Physiotherapy
- ▶ Norland College, Bath - Early Years Development and Learning
- ▶ Warwick University – Mathematics
- ▶ Birmingham University – Law
- ▶ Birmingham University – Sport and Exercise Science
- ▶ UWE, Bristol – Business and Events Management
- ▶ Swansea University – Zoology
- ▶ Plymouth University – Digital Art and Technology
- ▶ University of Kent – chemistry
- ▶ Exeter University – Mining Engineering
- ▶ Portsmouth University – Exercise and fitness management
- ▶ Royal Holloway college, University of London – Psychology, Clinical and Cognitive Neuro-Science
- ▶ Science Apprenticeship – Bath University
- ▶ Sports Coaching Apprenticeship – PH Sports
- ▶ Wiltshire College – Art Foundation Course
- ▶ Systems and Software Engineering Apprenticeship at Thales UK
- ▶ Accounts Apprenticeship at MOD

37% A*-A

100% Pass Rate



"You are really well supported by your subject teachers in the Sixth Form."



- Student ▶ Izzy
- Courses Studied ▶ A Level Geography, History and Mathematics
- Post Sixth Form ▶ To go to university to study Geography

two sites, one sixth form

▶ As a student at the Midsomer Norton Sixth Form, you will benefit from a huge range of rigorous subjects with expert subject teaching being pooled from across the two sites. This is designed to provide you with the best possible opportunities, as well as giving you the chance to expand your friendship groups.

The two Sixth Form sites at Norton Hill and Somervale are conveniently located just a short walking distance from each other in the town of Midsomer Norton, which is within a 12 miles radius of Bath, Bristol, Frome, Shepton Mallet and Wells. Many existing students choose to walk between the sites, which takes them approximately 10 minutes. Others choose to drive the short distance, as there is Sixth Form parking available at both sites.

Both sites celebrate their own unique characteristics and facilities. The Norton Hill site offers an array of specialist facilities; for example, fantastic ICT suites, excellent sporting facilities, as well as a dedicated Sixth Form Centre where you can study and socialise with your friends. The Somervale site has a quiet atmosphere and boasts top of the range Media facilities. Both sites have new contemporary Sixth Form Centres, a designated space for sixth form students only. These fantastic spaces provide students with allocated study space as well as being an area in which students can socialise.

“ The joint Sixth Form is a great chance for people to experience the best that both schools have to offer, as well as creating more social opportunities for students. ”

Sixth Form Council





sixth form community

- ▶ The Sixth Form consists of two sites in the small town of Midsomer Norton, situated within a 12 mile radius of Bath, Bristol, Frome, Shepton Mallet and Wells.

School coach transport is provided by B&NES from Farmborough, High Littleton, Clutton, Temple Cloud, Hallatrow, Farrington Gurney and Paulton.

Somerset County Council also provides school coach transport from Coleford and Holcombe.

There is a dedicated school bus service running from Timsbury to Midsomer Norton. This service also stops at Camerton and other outlying villages.

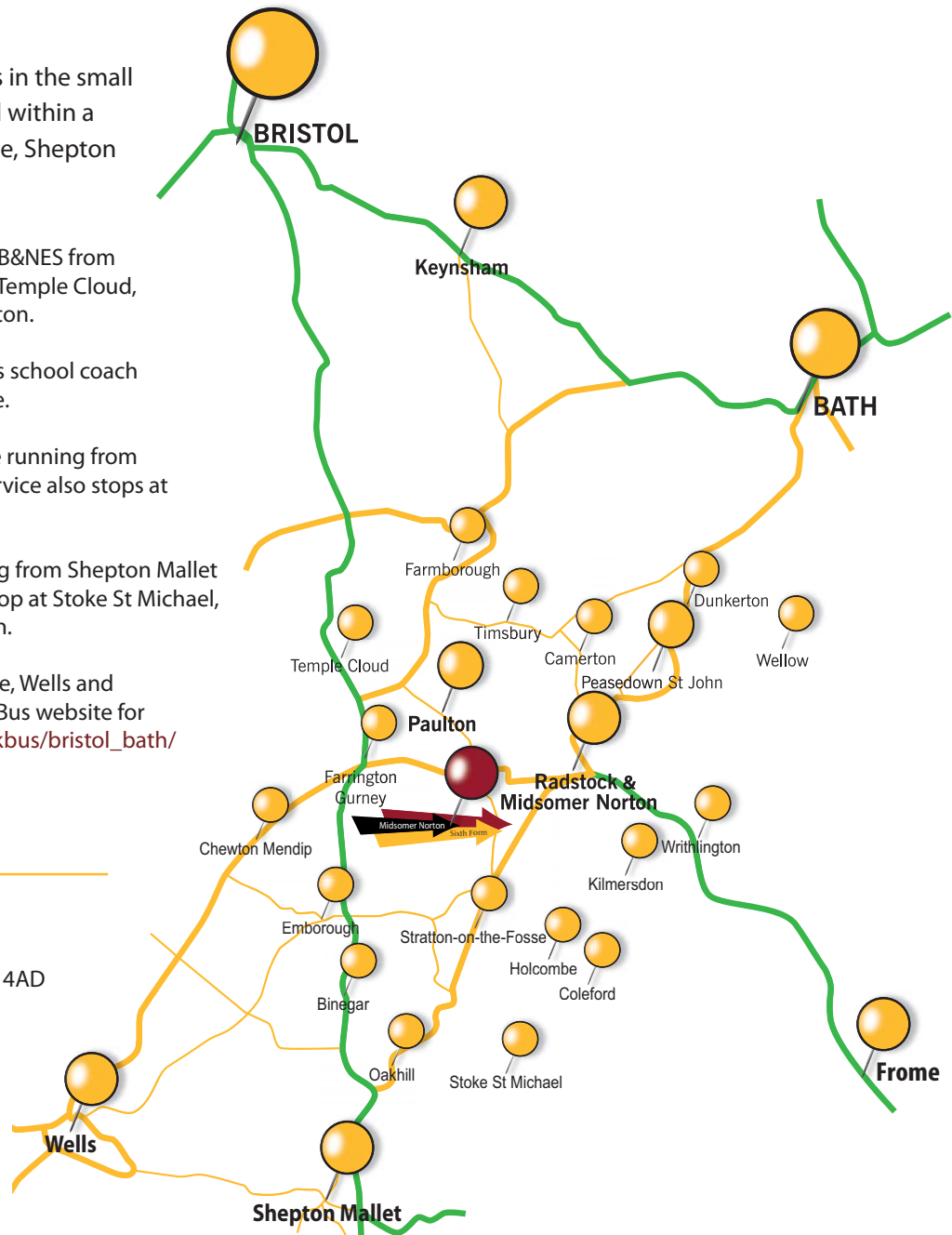
There is also a school bus route running from Shepton Mallet to Midsomer Norton, which will also stop at Stoke St Michael, Oakhill, Gurney Slade and Chilcompton.

Local bus services run from Bath, Frome, Wells and Shepton Mallet. Please check the First Bus website for further details: www.firstgroup.com/ukbus/bristol_bath/

Midsomer Norton Sixth Form
Admin based at: Norton Hill School
Charlton Road, Midsomer Norton, BA3 4AD

Tel: 01761 402280
Fax: 01761 410622
Email: info@msnsixth.com
Web: www.msnsixth.com

Headteacher: Mr Alun Williams, BSc





Year 13 Student

“The Sixth Form is just one of those things that you won't forget. It's an amazing experience...”



inspiring

“ The Midsomer Norton Sixth Form is great, due to the amount of academic support and extra-curricular opportunities which are available. This will ensure I will have a great start in life. ”

Head Girl



www.msnsixth.com

Midsomer Norton Sixth Form

Admin based at: Norton Hill School, Charlton Road, Midsomer Norton, BA3 4AD
Tel: 01761 402280 | Fax: 01761 410622 | Email: info@msnsixth.com | Twitter: [@msnsixth](https://twitter.com/msnsixth)

Sixth Form

Midsomer Norton