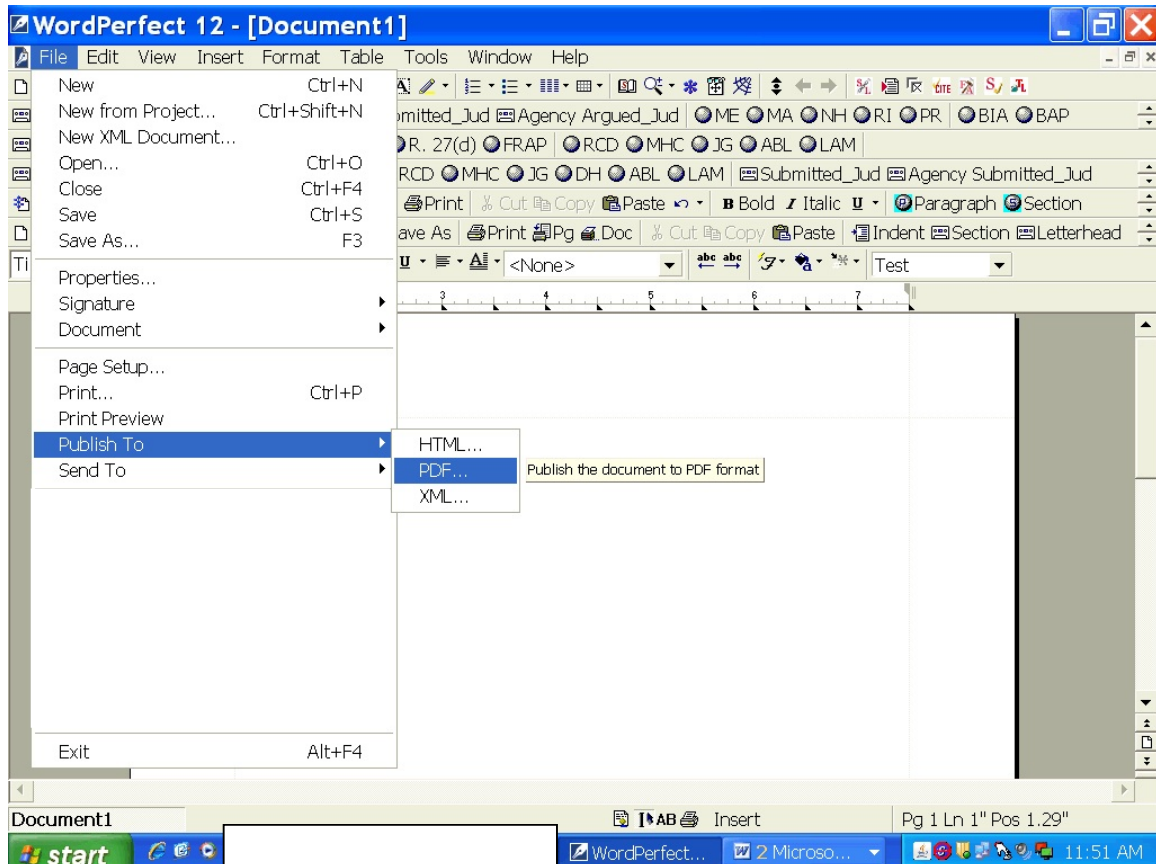
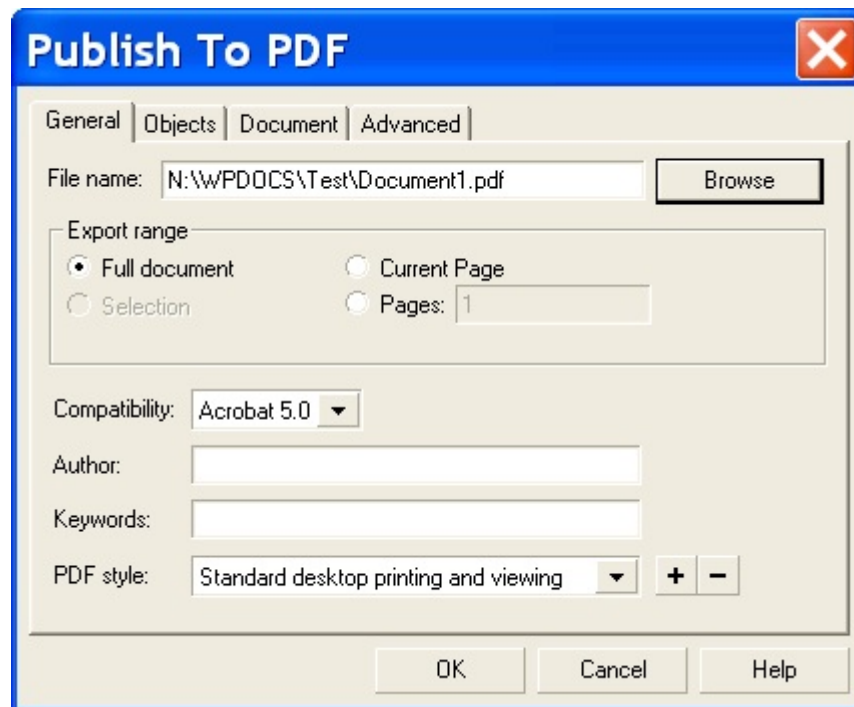


Converting a WordPerfect Document Using the Publish to PDF Feature

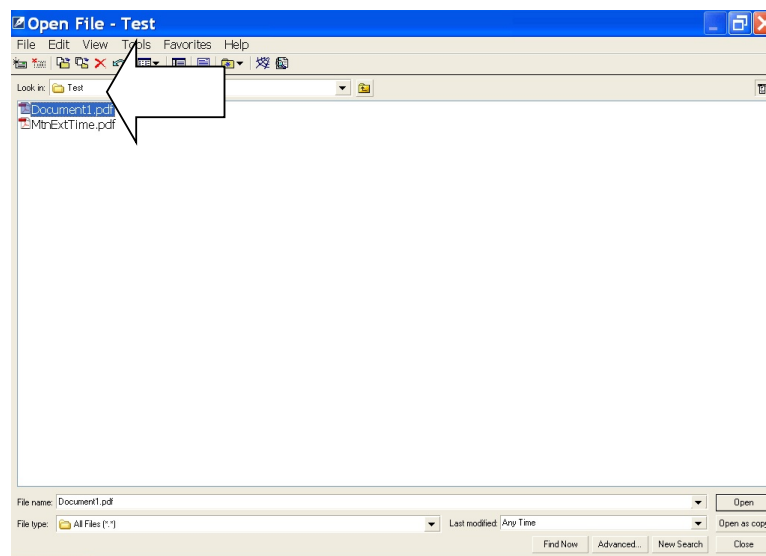
- Once the document is complete in WordPerfect and is saved to the desired folder click on the 'File' tab scrolling down to the 'Publish To' tab and choose 'Publish to PDF.'



- The dialogue box that appears will show a default path of where the file will be saved. If the document should be saved to another location click on the 'Browse' button to navigate to the desired folder.

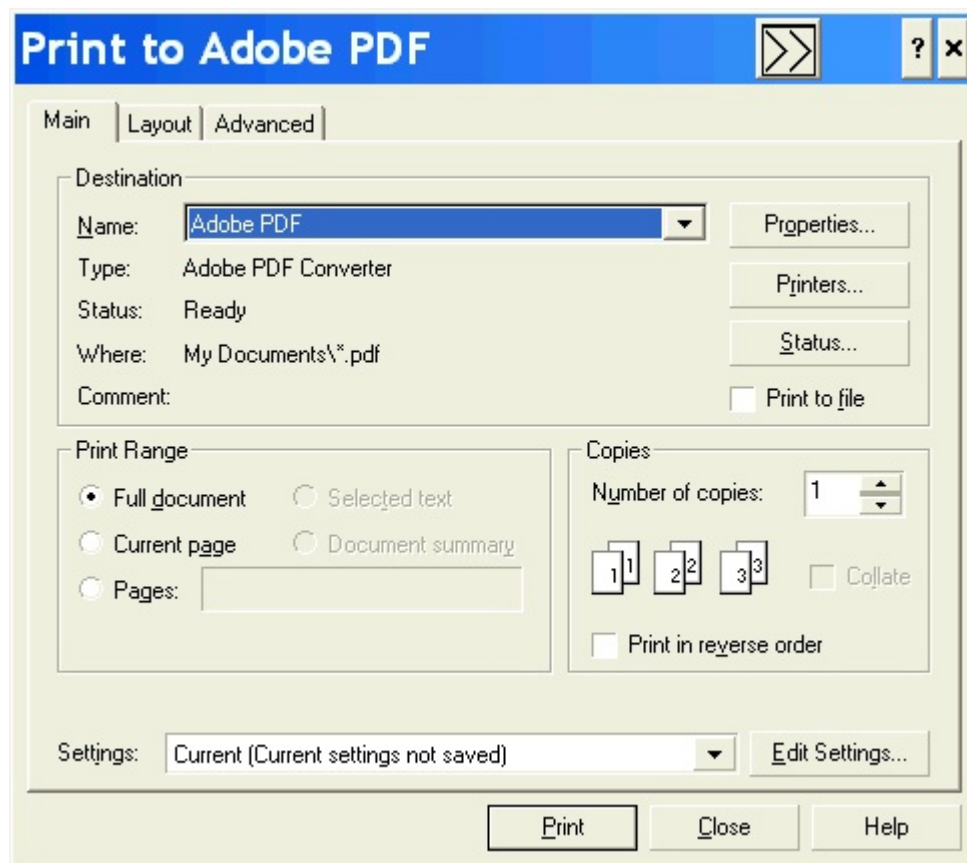


- After selecting the desired folder location click 'OK' and the PDF document will automatically be saved. Please note the final PDF will not automatically open. In order to see the final PDF, navigate to the folder where it was recently saved.

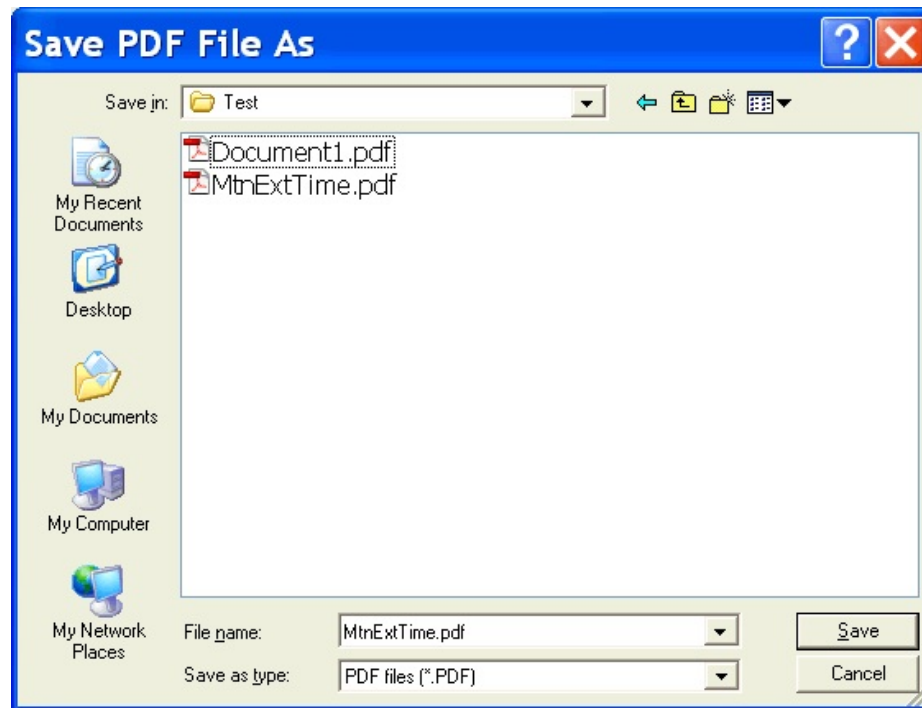


Converting a WordPerfect Document into PDF Using the Print Feature

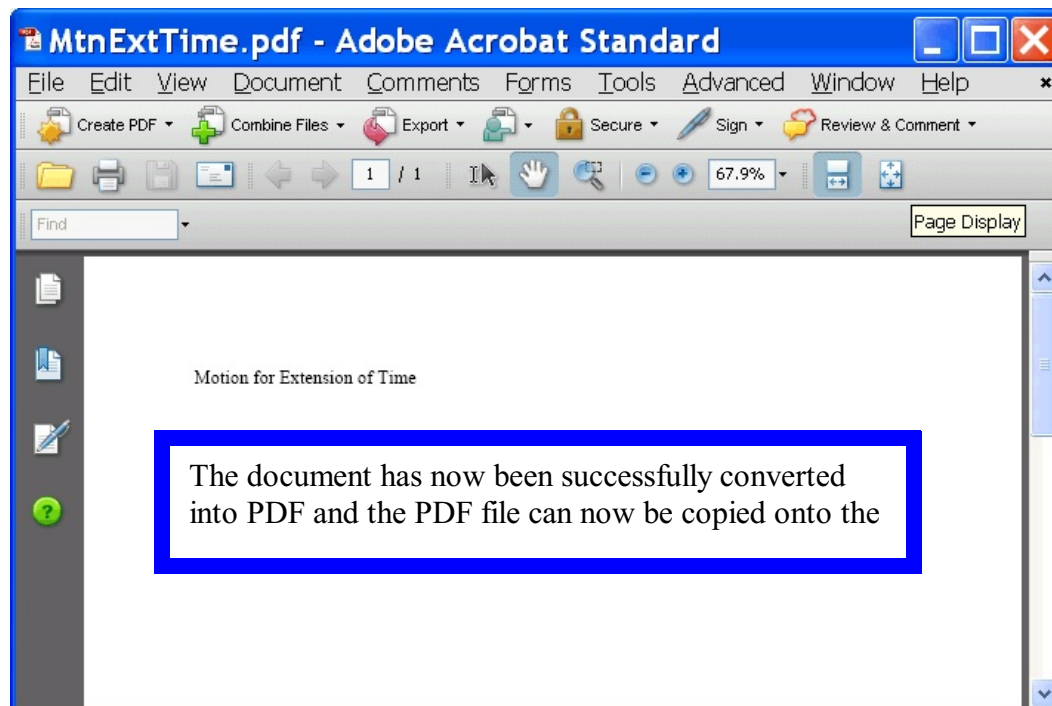
- Once the document is in its final version click on 'File' and then 'Save' in order to save the document to the desired folder in case of any changes.
- Once the document is saved click 'File' and then 'Print.' Do not use the print icon button as it does not allow the settings to be changed.
- When the Print dialogue box appears change the printer setting in the drop down box to 'ADOBE PDF.' See below.



- After clicking 'Print' another dialogue box will appear that gives the option to save the file to another drive where it will be saved in PDF.

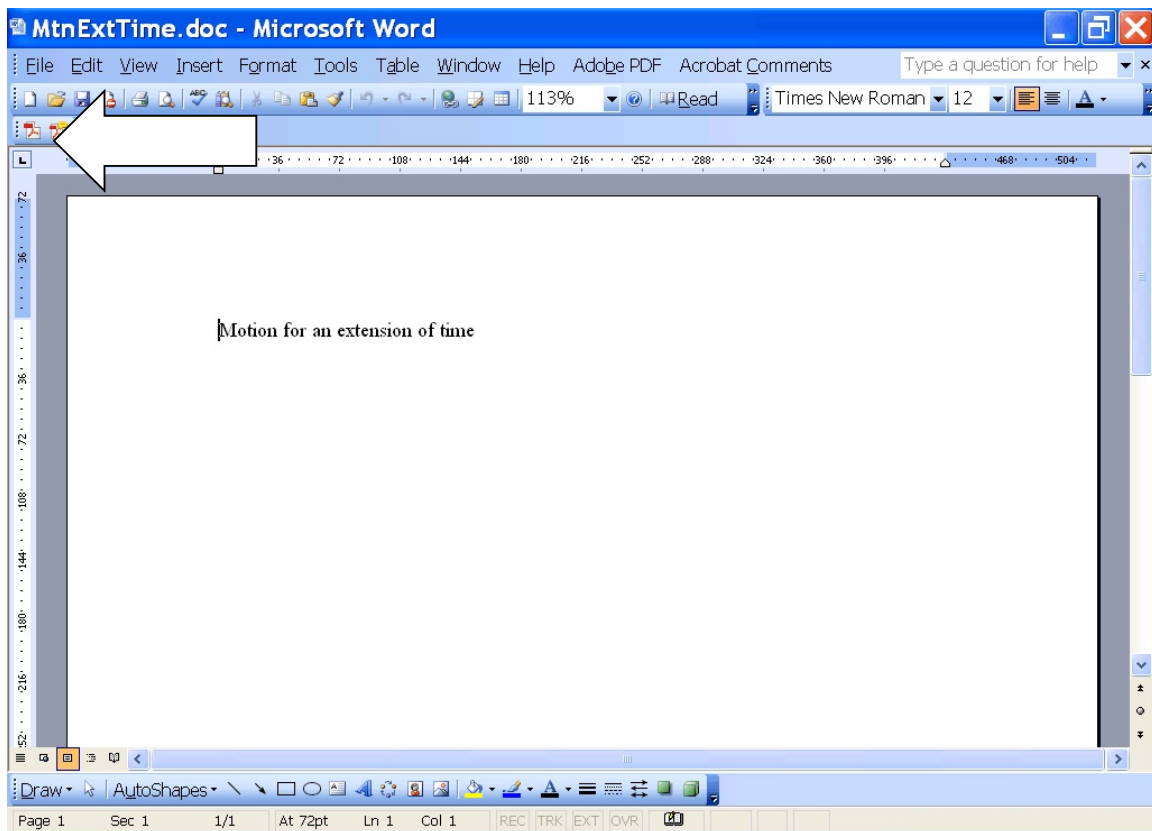


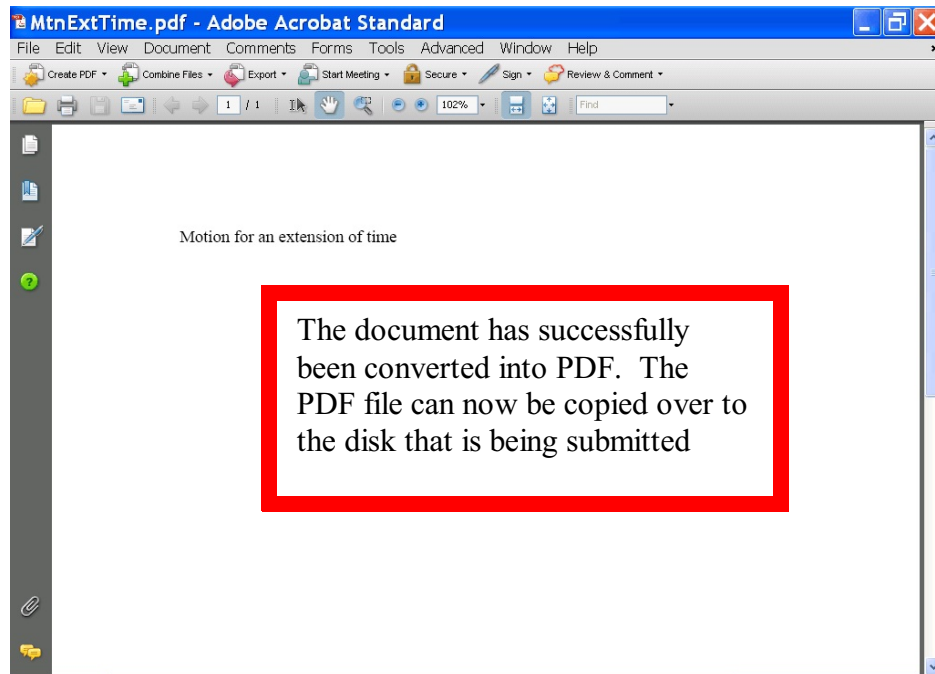
- Once the document has been saved in the PDF format in the specified folder (as shown above) the document will automatically be published into a PDF file.



Converting a Word Document into PDF using the Adobe Icon in Word

- If the version of Word that is being used has the Adobe icon in the upper left hand corner of the program (underneath the 'File' tab) this can be used to automatically convert the document into PDF without having to change the 'print' settings.
- Once the document is complete and ready to be converted click on the Adobe icon. The file will need to be saved before the document will be converted.
- If the document is not initially saved before clicking the Adobe icon, a message will appear reminding the user to save the document before converting. If this message appears, please click 'Yes.'

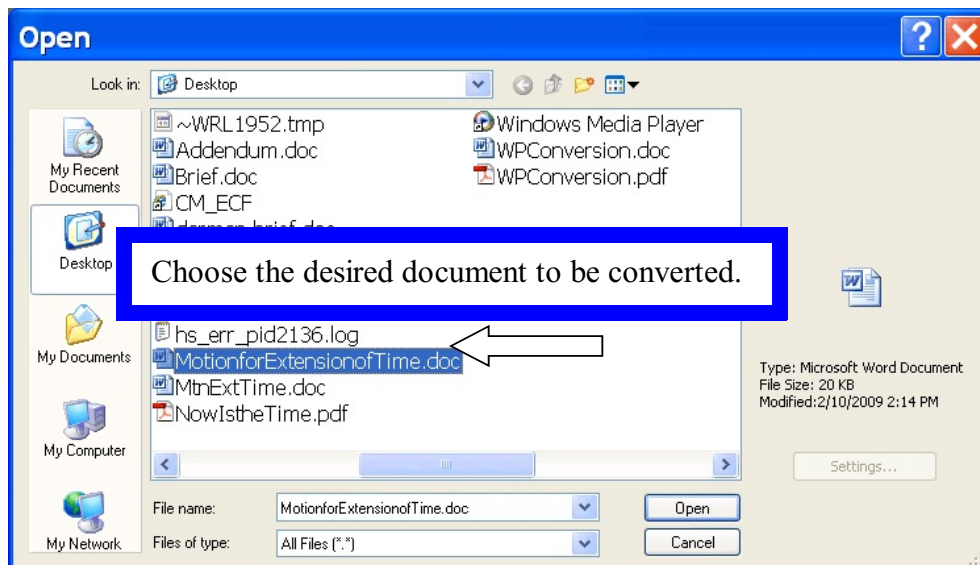
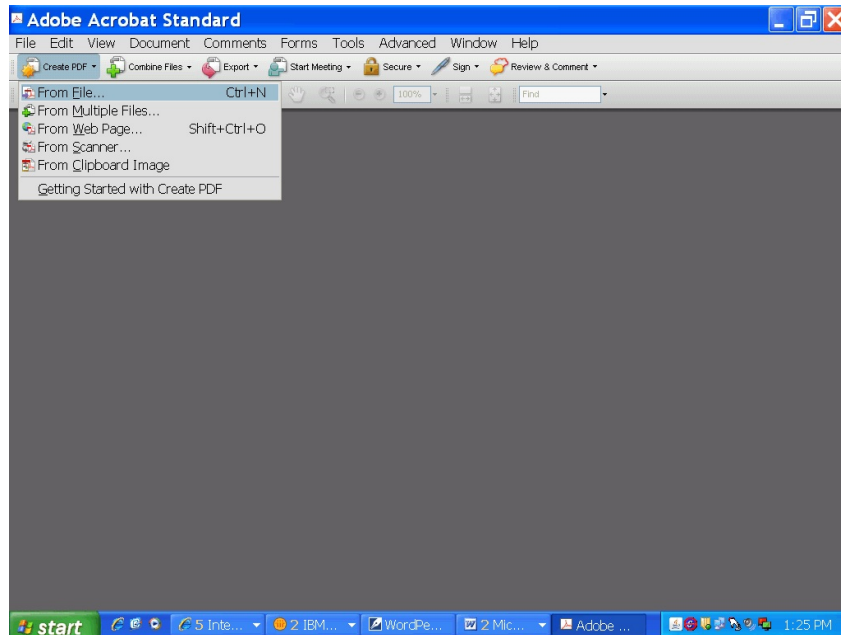




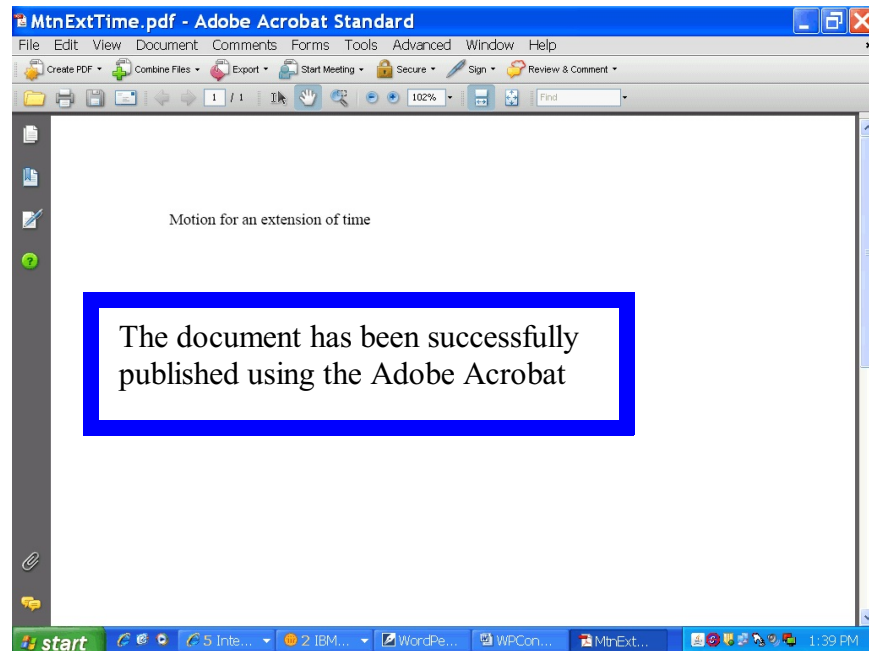
Converting a Word File to PDF Using the Adobe Acrobat Application

Note: This conversion method can not be used with a WordPerfect document. Adobe can only open Word documents for conversion within the Adobe program.

- In the Adobe Acrobat Standard Application click on the 'Create PDF' and then the 'File' tab.

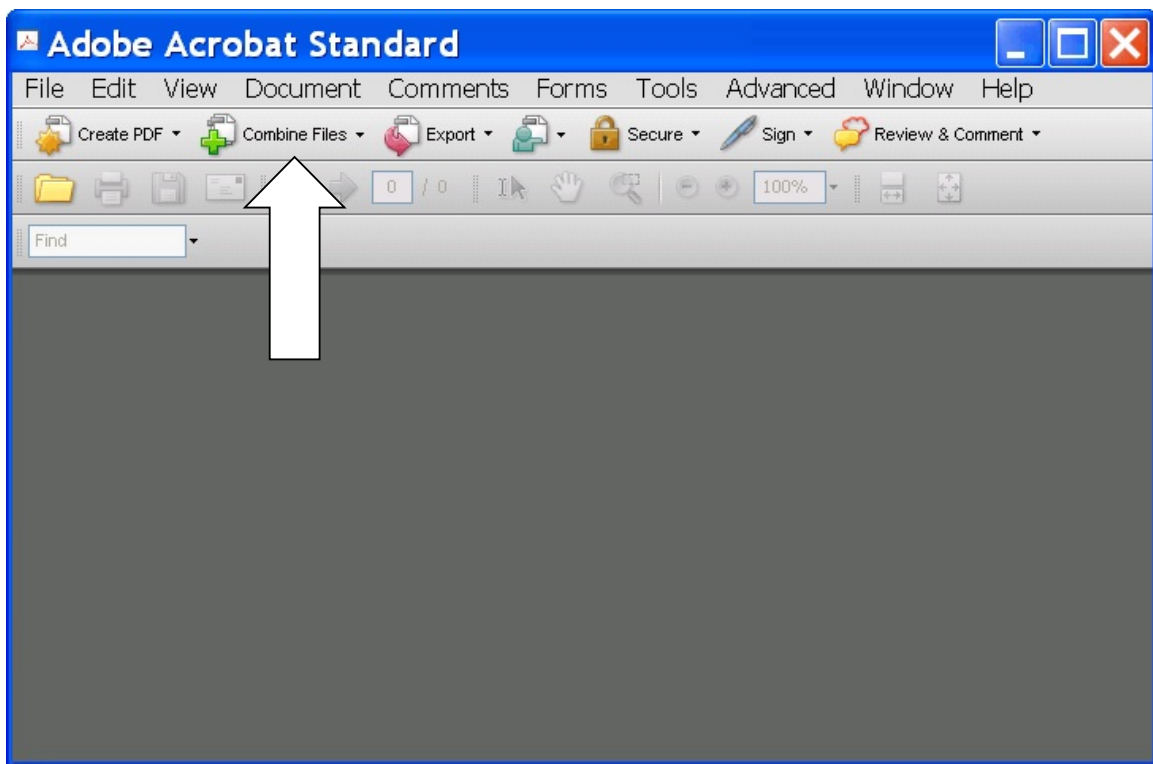


- Next click the 'Open' button and Adobe will begin the conversion.

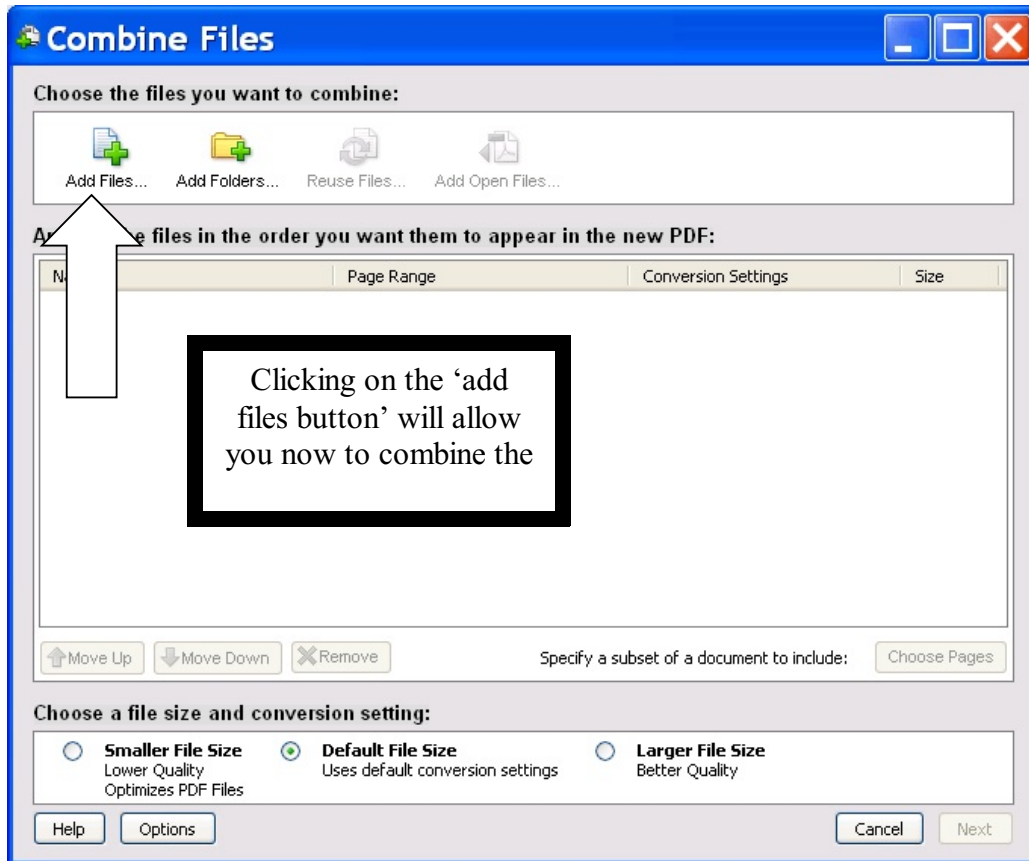


Publishing the Brief and Addendum into a Single PDF File

- The Court of Appeals requires that the disk contain the brief and addendum in one single file.
- Materials included in the addendum may be scanned into PDF if the original word processing file of the material is unavailable.
- Once the documents that form the addendum are scanned into PDF it is now ready to be combined with the brief to produce a single PDF file.
- In Adobe Acrobat click on the 'Combine Files' button.



The following will appear:



- Click on the add files button and select the brief.
- Click the add files button again and select the addendum file.

