

the Bulletin Board

VOLUME 14 - NUMBER 31

Published by the BNL Personnel Office

APRIL 11, 1961

VISITORS TO BNL

Members of RASES, the Republic Aviation Society of Engineers and Scientists, a technical group associated with the Republic Aviation Corporation, will visit the Laboratory on Saturday, April 15. Approximately 100 are expected to be present. They will be given a general tour of the Laboratory.

SIXTH BROOKHAVEN LECTURE

By DR. ERNEST COURANT
Physics Department

TITLE: High Energy Accelerators

LECTURE HALL: 8:00 p.m., Wed., April 12

A buffet supper (\$2.75) will be served at the Brookhaven Center before the lecture, beginning at 6:00 p.m. Reservations should be made at least one day in advance, by calling Extension 2302 before 5:00 p.m. or Extension 2453 in the evenings.

Refreshments will be available in the Research Staff Lounge following the lecture.

FRINGE PATTERN

MEDICAL INSURANCE CLAIMS
(Don't call us. We'll call you.)

This is Personnel Services speaking, not an actors' agency. Every day we receive at least twenty telephone calls from employees asking, "Is my Medical Claim check here?"

Unfortunately, your calls do not speed up handling of your claims. Each claim given to us for processing involves considerable clerical work and checking before it is forwarded to the insurance company for payment. From studies made we find that average claims take from 10 to 14 days, from the time they are received by us until payment is returned by the insurance company. (Incidentally, 658 medical insurance payments were made in January and February of 1961.)

Every effort is made to process your Medical Insurance Claims without delay. As soon as your claim payment is ready, you will be notified by us. We'll appreciate your cooperation very much, and everyone will benefit from better service.

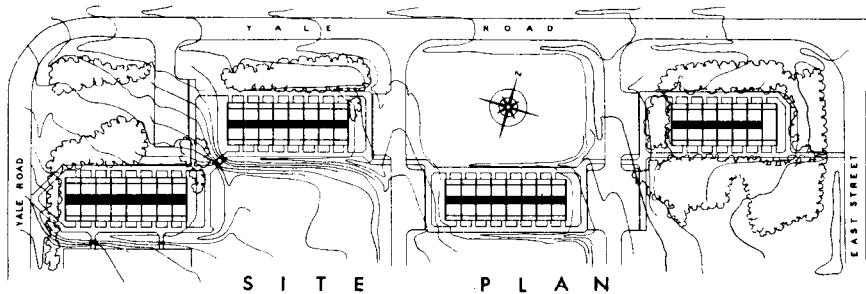
BNL SAFETY RECORD

39 Days since last Disabling Injury.
(March 2nd - April 9th)

NEW APARTMENTS UNDER WAY



Ground has been broken and excavation is in progress for the construction of new quarters for visiting scientists. The construction site, between Yale Road and East Street, is near the existing apartment area. It is expected that the apartments will be completed in October, 1961. The architect is Carl B. Stoye, of Sayville, Long Island, and the contractor is Harold A. Brandt, Inc.



The new quarters will consist of four one-story buildings. One building will contain sixteen individual housing units, consisting of a living-bedroom, each of which will have its own kitchen and bath. The other three buildings will contain a total of 44 rooms. These flexible units may be used as one-room apartments (each having its own outside entrance), with common kitchenette and bath for each pair of units; or they may be used as two-room apartments, consisting of a living room, bedroom, kitchenette, and bath. One of the buildings will provide trunk storage.

The buildings will be of modern design, with large amounts of glass utilized. The side walls of the buildings will consist of fixed glass panels, center operating windows, and insulated panels. The end walls will be constructed of brick, and the walls dividing the apartments will be of masonry construction. Each of the four buildings will have parking facilities.

All of the apartments will be furnished. Interior finishes will include asphalt tile floors and painted masonry walls. The ceilings will be constructed of exposed natural finish timber structure. Heating will be by means of electric convectors along the window walls.

2ND "OPEN" BOWLING TOURNAMENT SCHEDULED

Here's your opportunity to enter another mixed doubles tournament or, if you missed out on the last, here's your opportunity to get in on the fun of a handicap mixed tournament. The date will be June 3, 1961 in the afternoon. The place will be Port Jefferson Bowl. The prizes will be great. Watch next week's BULLETIN BOARD for full information and rules - including an added incentive to the ladies.

DISCOUNT TICKETS

Discount tickets to the following shows and events are currently available at the Personnel Office, 58 Brookhaven Avenue:

THE BEST MAN
(Morosco Theatre, N.Y.C.)

CLYDE BEATTY - COLE BROS. CIRCUS
(L.I. Arena, Commack)

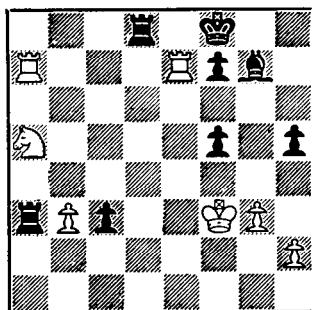
THE KING AND I (in Grandeur 70)
(Rivoli Theatre, N.Y.C.)

TENDERLOIN
(46th Street Theatre, N.Y.C.)

SHOW GIRL - with Carol Channing
(Eugene O'Neill Theatre, N.Y.C.)

CHESS PROBLEM

In this week's problem, white has a better position with its rooks lined up, but black has a passed pawn and it is black's move. How would you play it? Answer elsewhere in this week's BULLETIN BOARD.



UPTON ARCHERY CLUB

An indoor shooting contest has been started. The course of fire will be a 20-yard range at a 12 inch target for instinctive shooters only. All club members who are interested in participating, come on out on Monday at 7:30 p.m. at the Gymnasium. Trophies will be awarded to the high scores.

New membership is open to any who feel interested in joining.

SOFTBALL LINEUP

After a series of captains' meetings among our 14 entries, it was decided to establish two 7-team leagues. Each team will play a total of 12 games against teams in its league plus 2 inter-league contests. The first place clubs will compete in a playoff at the season's close to determine the Laboratory Championship. Immediately after the playoff, an "All-Star" game will climax the softball schedule.

The league division is as follows:

BROOKHAVEN	NATIONAL
Potsareebies	Phoubars
Health Physics	Old Timers
Medical	Metallurgy
Electronics	Dirty Sox
E.O.A.	Cosmotron
Biology	Gnats
Untouchables	Grounds Maintenance

UPTON RIFLE AND PISTOL CLUB Large Bore Starts April 23

The opening shot of the 1961 large bore tournament will be fired on Sunday, April 23rd at 11 a.m. The "on-site range" will be the home of the first two shoots. The following tournament shoots will be held at the Medford Range. If you have not signed up, call A. Lukas, Ext. 769, or P. Colombo, Ext. 624.

The Club has a limited supply of .22 cal. ammo in stock. Sales are restricted to 200 rounds per member until a new shipment arrives. Ammo may be purchased by contacting F. German, Ext. 2151. Price is 55¢ per box of 50 rounds.

FISHING CONTEST NEWS



FLASH - Pete Hlavac and John McCafferty are tied with 375 points each for their 1½ pound white perches. The Fishing Committee had a special meeting to straighten out this new crisis. The committee has decided to have a "fish-off" on any ties. The two tied men will compete in the next month's contest; the one catching the higher point fish will receive the award for the tied month. We have a limited budget that has been spent for the awards listed previously. Remember - all ties will be fished off the following month. Any specie counts; the higher point fish wins.

So far in April we have one entry, by Leslie Laurence of AMD, a 1 lb., 3 oz. flounder with a point score of 141. Let's get out and give Leslie a run for his prize.

BROOKHAVEN DIVERS CLUB

The next meeting of the Brookhaven Divers Club will be held on Monday night, April 17, 1961 at 7:30 p.m. at the Pool. After a short business meeting at which summer plans will be discussed, the pool will be open to all members and their guests. An exciting underwater film, "Secret Cargo", will be shown.

For further information, contact Jean Lauer, Ext. 2390.

SPRING IS HERE



On April 4th, the first ball game was played at BNL. The Metal Men played the Potsareebies in an exciting practice game. Although neither team fielded a full 10 men there was plenty of good clean action. The final score was Metal Men 3, Potsareebies 2.

The fine hitting of Mike Guacci, who hit the first home run of the season, was a deciding factor in the game. We thank the Potsareebies for the fine competition and wish them lots of luck this season.

As a final note, the Metal Men will accept all challengers for pre-season games. If your team is interested in playing a practice game, call George Dioguardo, Ext. 553.

SWIMMING POOL SCHEDULE

Tuesday, Wednesday, Friday
7:00 p.m. - 10:00 p.m.

Thursday
5:00 p.m. - 10:00 p.m.

Admission: 35¢ for employees and family members; 60¢ for guests.

ANSWER TO CHESS PROBLEM

WHITE	BLACK
1.	B - Q 5
2. R x P check	K - N 1
3. R B - Q 7	R x R
4. R x R	B - N 3
5. N - B 4	P - B 7



BERA BOWLING

BOWLING DANCE

Couldn't think of a thing to say about the dance. Everyone is going, for sure, and they all know it's on Saturday, April 29th at the Gym. They'll know the tickets are available when their captains hand them out this week, so there is no need for any publicity this week. Ho hum - I'll just forget it!!!!

LADY KEGLER'S COLUMN

And the 60-61 bowling season is all over except the shouting, and the sweepstakes. Odds & Ends lost 2½ points to the All Thumbs, with Elaine Daniels converting the 6-7-10 split very professionally, and Grace Siemen setting a new high game for the league of 215. Alley Kats lost 3 points to the Twinkle Toes, thus All Thumbs finished in 2nd place. Congrats! Nightingales lost 3½ points to the Boo Boo's, and Medigals took 3 points from the APC's. Other high games for the night were: Barbara Garnier 176, Jody O'Connell 163, and Pat Cosier 162.

BLUE LEAGUE

The Techs closed the season in first place as reported last week. In addition they took another ½ point when they bowled the Splitters on April 5, 1961. Hildenbrand rolled a 203, 187, 538 series, best of the 3 man Tech team. For the Splitters, who end in second place, 3½ points when Carter rolled a 195, 192, 547, Spira a 209, 533, Sparacino a 182, 181, 539.

The Nuclides split 2 and 2 with the Snafus. The Nuclides used 8 men in a never-ending roster switch but high man was still a 169. For the Snafus, Uddman bowled a 177, 176, 523 series.

The Meteors went to work on the hopes of the Pacers and came up with three points. Stelmaschuk was high with a 175. The Pacers bowled a consistent match - consistently on the low side.

The Bubble Boys took two more when they split with the Powermites. Ferrante rolled a 178 while Scheliga had a 203, 172, 503 series.

Blue Ball of the week to Sal Sparacino with a gross of 602 series.

PURPLE LEAGUE

With the end of the bowling season upon us, we find the Designers, led by Capt. Ed Sperry, our league champs. J. Cuccia got in his season's best effort 187-500. Fiscal's Bob Eberbach had 215, and Scotch's Barry Galen had 209, also getting in under the wire or maybe warming up for next season. That's our Bob.

For six weeks it was a seesaw battle for second place between the Woodbutchers and Scotches with Capt. Milian's Woodbutchers taking the 2nd place trophies by a ½ point by winning their last game of the season.

ALL LEAGUE LABORATORY TOURNEY



"HOPE YOU DONT MIND, DEAR, BUT THE TEAM'S FIGHTING FOR FIRST PLACE!"

"The Team" at the Laboratory will be decided by way of a round robin tournament among the five league winners. Each team will bowl a total of four games (one against each opponent). The Petersen point system will be used and awarded as follows: one point for each game won and one point for each 50 pins including handicap. The team accumulating the most points will be the Laboratory Champs.

Come out and cheer your favorites on!

PORT JEFFERSON BOWL - WEDNESDAY, APRIL 19TH - STARTS PROMPTLY AT 6:30 P.M.

BERA BOWLING LEAGUE CHAMPIONS

The last of the regular season's scheduled league bowling was completed last week. In our 5 leagues many of the contests for league leadership and individual high were not decided until the last game was rolled.

Final results were:

LEAGUE	WINNERS	2ND PLACE	HIGH AVERAGE	HIGH SERIES	HIGH GAME
Green	Old Timers II	Old Timers III	C. Tomesch 172	R. Adams 613	J. Rhodes 247
Red	Bugs	Skins	H. Shipley 165	J. Van Norman 591	G. McGovern 233
Purple	Designers	Woodbutcher	J. Rocklein 175	R. Vogt, 623	A. Texiera 242
Blue	Technicians	Splitters	R. Larsen 183	R. Larsen 661	R. Wessel 277
Pink	Twinkletoes	All Thumbs	G. Siemen 160	G. Siemen 586	G. Siemen 215

RED LEAGUE

Well, the Bugs will wear the crowns for the Red League this season. They got to the top of the League and stayed there. Of course, without the expert bowling of Shipley, T. Iarrocchi, Lauraine, Rowland, Carde, Jason and the moral support of J. Cross, the shirts would mean nothing. The Bugs ended the season by taking all 4 points from the Skins. The men who went out smiling were Shipley 474, Carde 496, Lauraine 525, and T. Iar-

rocchi with a 534 series.

The Downunders had the man power and used it in their match against Biology by taking all 4 points. The Downunders who ended the season with a big splash were Bieselin 498, Zorro (who was cracking his whip again) with a 501 and, of course, M. Iarrocchi finished up with a 581. The Biology men who died trying to win were Schairer with a 457 and McGovern with a 512. McGovern got high-game-233 in the League and Harry Bieselin got most-improved bowler.

CLASSIFIED ADS

FOR SALE

1954 MG - TF - in excellent cond., good tires and top, wire wheels. Best offer over \$950. E. Degenhardt, Ext. 373, or BREntwood 3-2250 after 6 p.m.

1954 PLYMOUTH - Station Wagon. Orig. owner. Excell. running cond. Good rubber, new battery, new front end shocks. Must drive to appreciate. Ext. 2211.

1950 PONTIAC - 1952 Engine, 6 cyl. std. trans., new battery, brakes & generator, good rubber. \$125. Ted Schreiner, Ext. 2604.

1953 RAMBLER CONVERTIBLE - Red with black top, continental spare. Four new tires, gas consumption easy on the pocketbook. \$350. L. Baker, Ext. 591.

1957 FORD FAIRLANE - hardtop, 8 cyl. automatic transmission, power steering, r&h, good cond. Ext. 504

1959 RENAULT DAUPHINE - 4 dr. sedan, r&h, excell. cond. Low mileage, \$695. SE 2-8950.

1952 HILLMAN SEDAN - 4 dr., 28-30 mpg., 250-300 mpq. Good second car for local use. Best offer over \$125. John Walsh, Ext. 454.

1957 MERCURY - White with black top, fully powered. In very good mechanical cond. with many extras such as snow tires, dual headlights and foam rubber dashboard. Ext. 2430, after 6 p.m. GR 5-0732.

BRICK RANCH HOME - 3 bedrooms; living room, kitchen, finished basement, 2 car garage, private room with kitchen & bath. Separate entrance. Ideal for professional man. 15 minutes from Lab. SE 2-6385.

HOUSE - Mastic Beach, 4 rooms, 2 bedrooms, bath, full cellar, hot air heat. Reasonable. AT 1-7748.

HOUSE - Bayport. 3 bedrooms, 2 baths, living room, dining room, kitchen, utility room, attached garage, full size basement, fully insulated. Oil, circulating hot water heat. Plot 110x217 ft. fully landscaped. EM 3-6207 after 6 p.m.

HOUSE - Yaphank - on well-landscaped wooded corner lot, 125x200 ft., two bedrooms plus extra finished room in cellar, large living room, modern kitchen, dishwasher, full basement. Ten minutes from Lab. \$10,800. SH 4-5096.

18 FT. OUTBOARD CABIN CRUISER - 35 hp Evinrude motor and trailer. \$1250. Ext. 681 or AT 6-9669.

24 FT. 9 IN. JERSEY SKIFF - 95 hp Flagship. 2 to 1 reduction installed last year, 2 bunks, new gas tank, new instrument panel, new rudder and skeg, Sutton Bilge Pump, many extras, boat needs slight repair and spring clean up. \$650. E. Bindel, Ext. 611 or AT 1-7730 after 6 p.m.

18 FT. FIBERGLASS SAILBOAT - Dacron sails, anchor, pump, running light, compass. Fredi, Ext. 2129.

1957 SHELL CRAFT - 18 ft., sleeps 2, shelter cabin and navy top, 1957 30 hp Johnson outboard, electric starter, and trailer. All in good cond. \$1,000. Ken Thomson, Ext. 566 or JU 8-2809.

OUTBOARD - Like new, 7.5 hp. No reasonable offer refused. LT-9-3269.

1957 18 FT. THOMPSON INBOARD - 75 hp Graymarine engine, Navy-top, side curtains, custom upholstery throughout, completely equipped for fishing, MANY extras. \$1700. Pat, Ext. 610, evenings AT 9-0529.

BENDIX IRONER - practically new, excell. cond., reasonably priced. Ext. 2184 before 5. GR 5-4312 after 5.

STEEL BED FRAME - Adjustable, with hard rubber caster wheels. 3 months old, used approx. 1 month. \$10. Also 16 Hotbed sash. 3x6 ft. each. All cypress frames in good cond. Will sell individually at \$4 each or all 16 for \$56. BE 7-0246 after 5:30 p.m.

HEATHKIT MOHAWK RECEIVER - Wired, \$300. Ext. 772, Homeyer.

BABY CARRIAGE - Like new, complete with mattress, weather protector, and net. \$20. R. Cambrey AT 1-6692.

RECEIVER - Hallicrafter four band Model S-40, with "S" Meter. \$35. Bob Walton, Ext. 2181.

HEDSTROM FOLDING CARRIAGE - Blue and grey, good cond. Also playpen. Both for \$20. AT 6-8643 after 6 p.m.

HI FI AMPLIFIER - Eico HF 20, 20 Watt, one year old. Also Pilot FM tuner. Both in excell. cond. Best offer for each or both. B. Howard, Ext. 2314.

RCA VICTOR PHONOGRAPH - Portable, 3 speed, auto. changer, good cond. Ext. 616.

JR. DINING ROOM SET - Nine piece; table, six chairs, china cabinet and buffet. Limed Oak, excellent cond. \$100. Bob Doering, Ext. 779.

BOY'S BICYCLE - 20 inch, excellent running cond. \$11. Call BE 7-0294.

WANTED

FAIR TRADE - Dogwood or Mountain Laurel for flowers and flowering or fruit trees you are thinning from your garden. M. Lellouche HR 3-2115 after 6 p.m.

SCIENCE ABSTRACTS - Part A for yr. 1959 - urgently needed for binding. Suydam, Ext. 428.

ROTOTILLER - 3 hp, used, in good cond. J. Faust, Ext. 2255.

WELL-BRED LADY LABRADOR - Black, to meet handsome boy Labrador. Object: Matrimony. Pick of litter deal preferred. Del Sieger, Ext. 2169 or GR 5-3195 evenings.

BOAT - Have Captain's hat and whistle, need boat. 25 to 36 ft. Cabin Cruiser or 8 ft. sailing pram any shape or cond. No very reasonable offer turned down. Will trade or bargain. G. Linkh, Ext. 772.

TUTORING - Experienced teacher, remedial reading specialist, will tutor in her home in all elementary subjects and remedial reading. J. Fuchel, Ext. 409 or AT 9-1631.

CAR POOLS

Carpool from Bayport looking for driver. Phifster, Ext. 593.

Driver needed for carpool, vicinity of Donegan Ave & South Country Rd., East Patchogue. Dee, Ext. 301-37.

Would like to join or start carpool from Lake Ronkonkoma village area. Joe Bauernfeind, Ext. 772.

Would like to join carpool from Patchogue, East Patchogue Area or arrange for ride. J. Tillinger, Ext. 2212.

One driver needed to complete established carpool from Patchogue. Ext. 472.

Want to join car pool from E. Meadow, Merrick, or Bellmore. Jerry Opkins, Ext. 2194.

LOST AND FOUND

LOST - Black fountain pen made by Swan. Colley, Ext. 739.

FOUND - Black head scarf. Personnel Services, Ext. 2107.