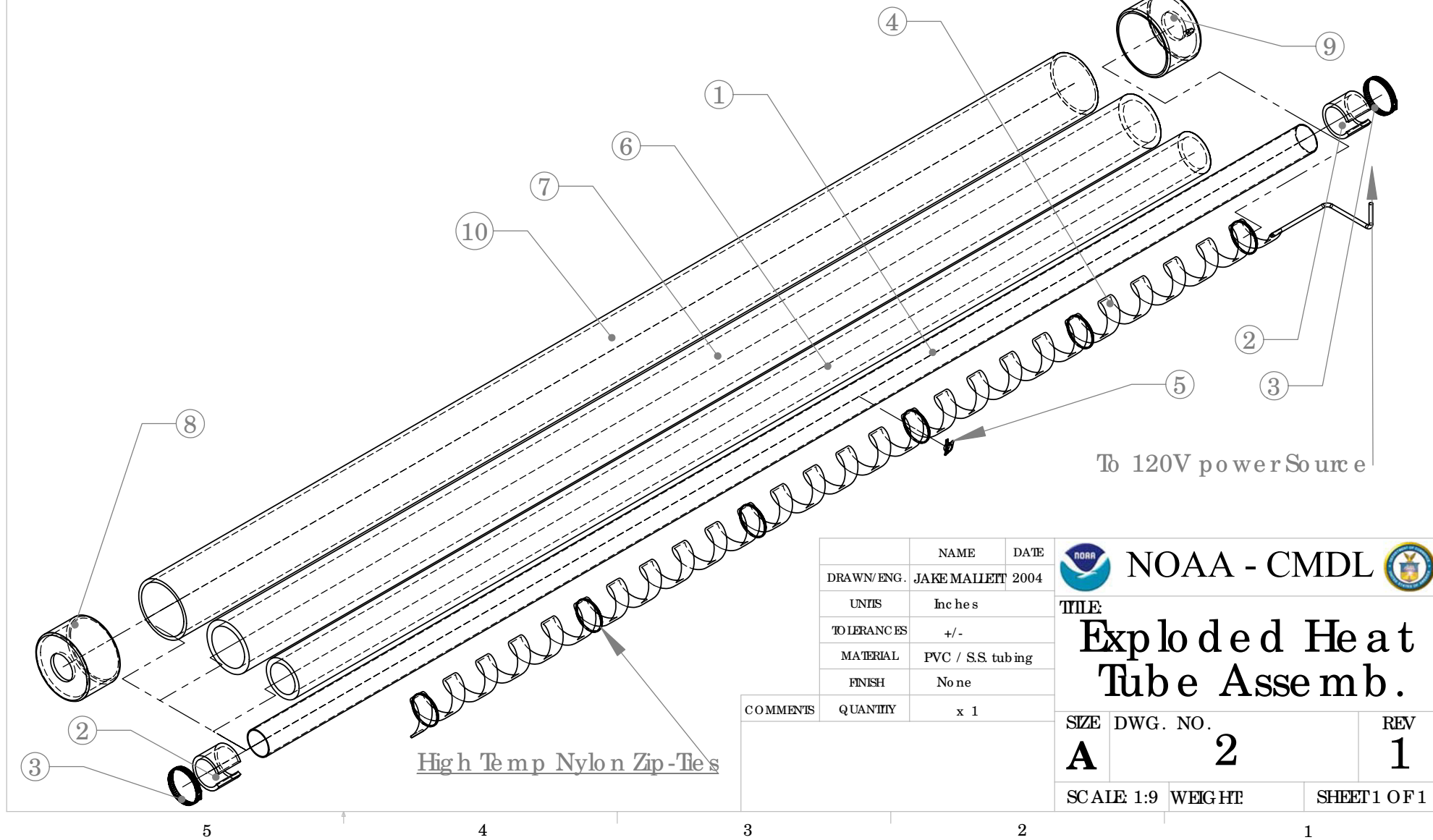


ITEM NO.	QTY.	PARTNO.	MATERIAL	DESCRIPTION
1	1	2in OD Stainless Steel Tube 8ft long	2in OD x .96in Stainless Steel	Plished Finish
2	2	2in ID Collar	2in ID PVC x 2in	Axial Notched Side
3	2	Hose Clamp		
4	1	Heat Tape		
5	1	OA220F Thermal Cut Out Switch		Wire in Series w/ the positive 120V Power Supply lead
6	1	3in OD Fiber Glass Wrap Insulation		Wrapped Until Outside Diameter is about 3in
7	1	3in ID Foam Pipe Insulation		
8	1	4.375in OD Sewage GRD pipe Cap top	Sewage Grd 40 - 80	2in dia. Hole cut out for S.S. tube
9	1	4.375in OD Sewage GRD pipe Cap bottom	Sewage Grd 40 - 80	2in dia. & .5in Hole for S.S. tube & power cord
10	1	4.375in OD Sewage GRD pipe	Sewage Grd 40 - 80	83.5in length



	NAME	DATE
DRAWN/ENG.	JAKE MALLET	2004
UNITS	Inches	
TOLERANCES	+/-	
MATERIAL	PVC / S.S. tubing	
FINISH	None	
COMMENTS	QUANTITY	x 1

NOAA - CMDL

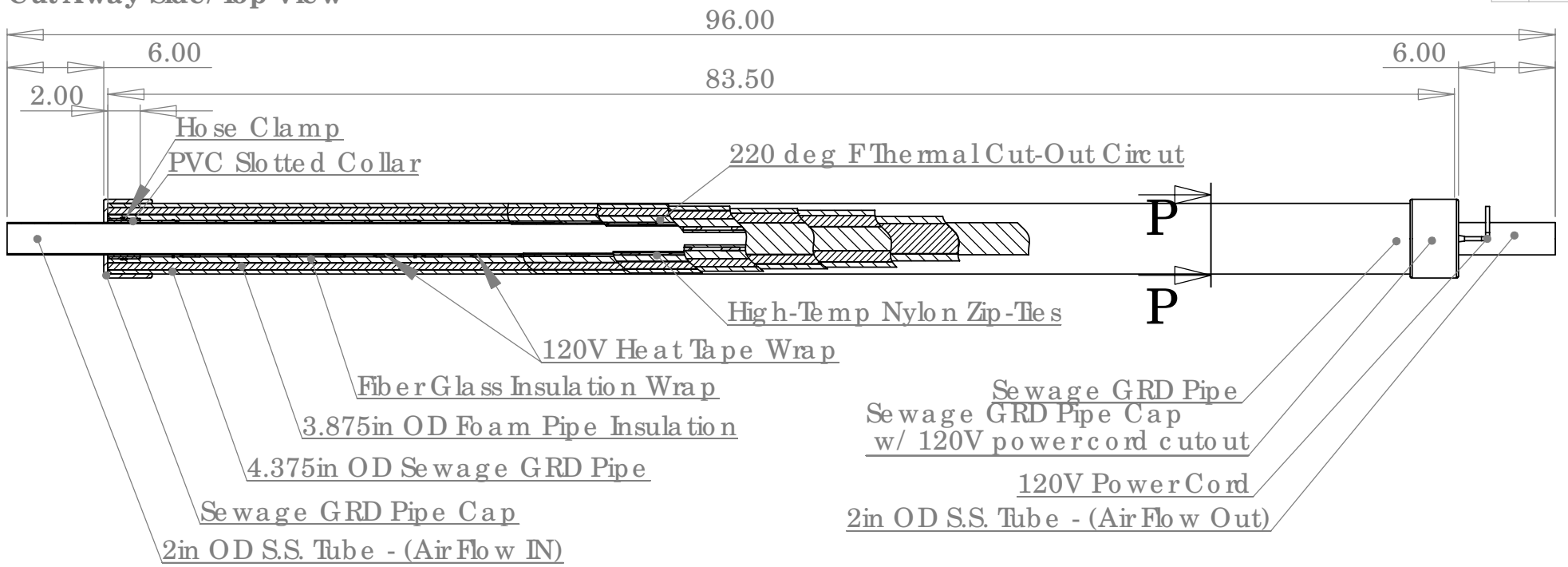
Exploded Heat Tube Assembly

SIZE DWG. NO. REV
A 2 1

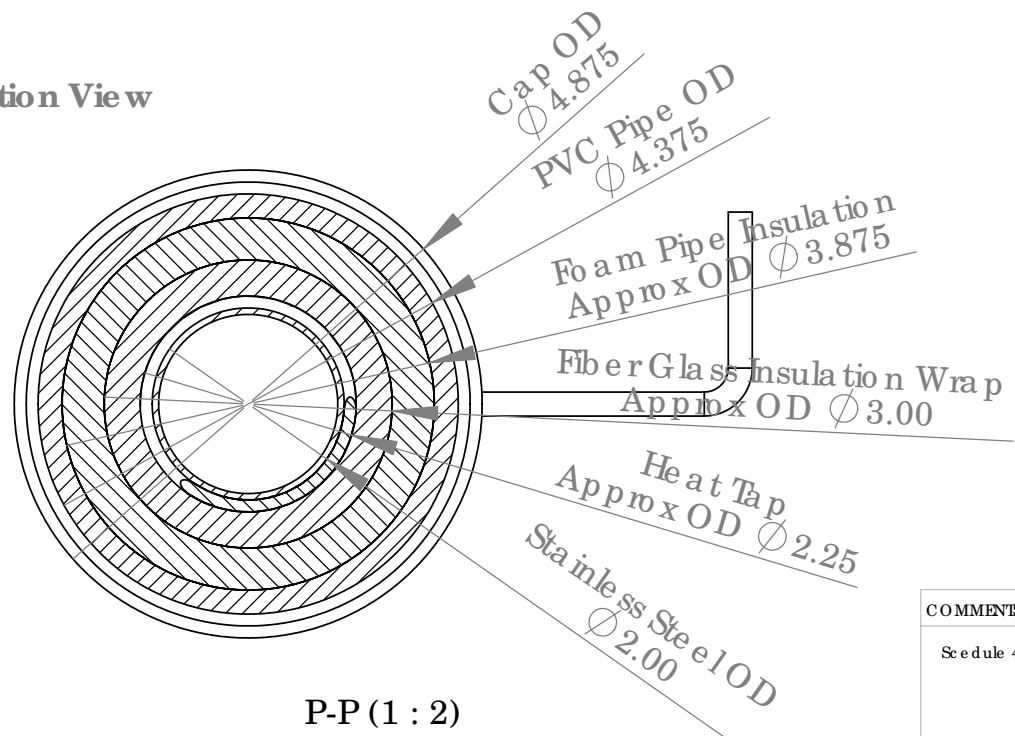
SCALE 1:9 WEIGHT SHEET 1 OF 1

Cut Away Side/Top View

DATE 2004



Section View



- Sewage GRD Pipe
- Sewage GRD Pipe Cap w/ 120V power cord cutout
- 120V Power Cord
- 2in OD S.S. Tube - (Air Flow Out)

	NAME	DATE
DRAWN/ENG.	JAKE MALLET	2004
UNITS	inches	
TOLERANCES	+/-	
MATERIAL	PVC / S.S. tubing	
FINISH	None	

COMMENTS	QUANTITY
Schedule 40 or 80 can be used	x 1



TITLE: **Heat Sample Tube Assemb.**

SIZE	DWG. NO.	REV
A	1	1

SCALE 1:10