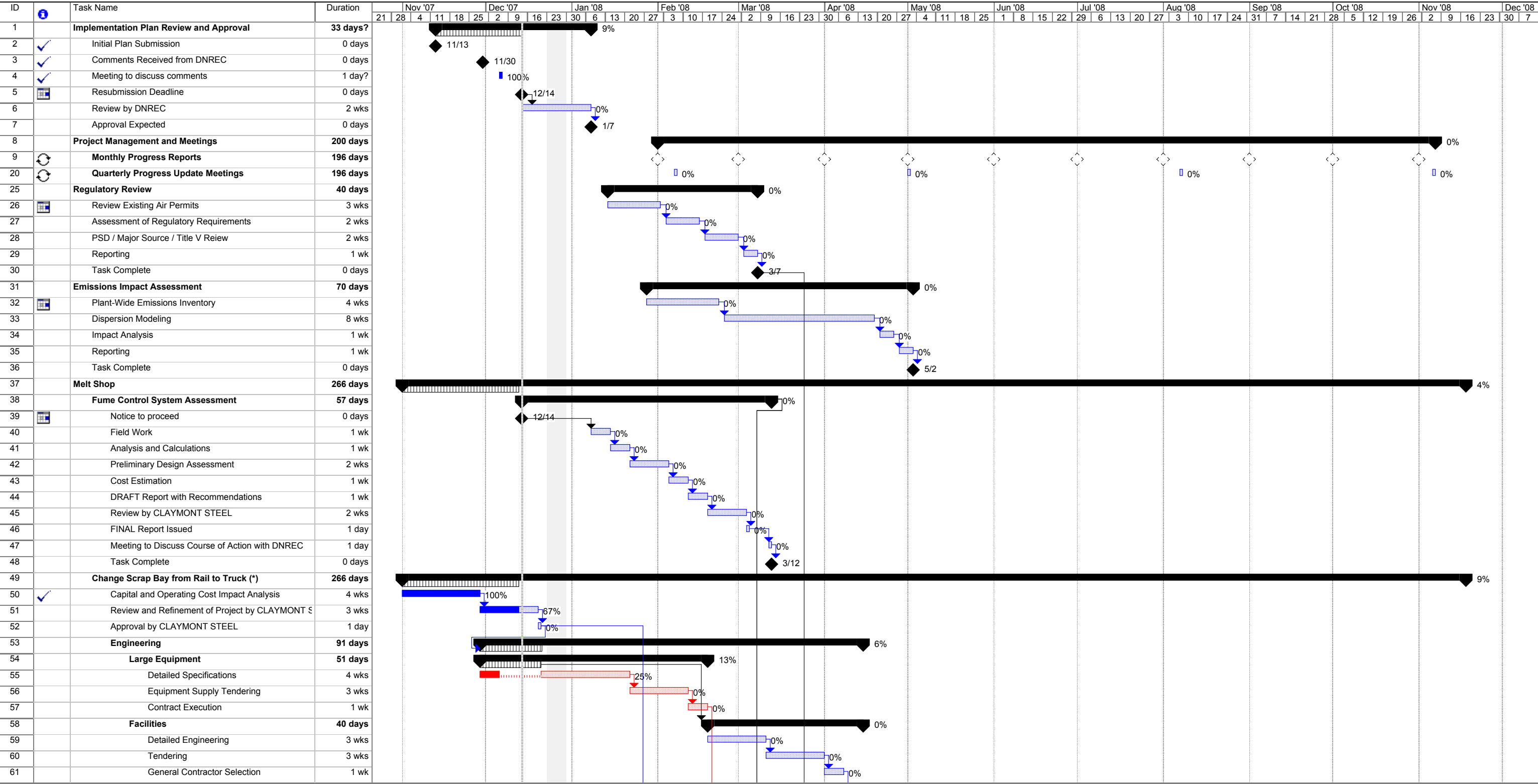


Claymont Steel
Implementation Plan
Dust Control Projects

Revision 1
December 14, 2007



Earth Tech Inc.
Printed: Dec 14 '07

Critical

Critical Split

Critical Progress

Task

Split

Task Progress

Baseline

Baseline Split

Baseline Milestone

Baseline

Baseline Split

Baseline Milestone

Milestone

Summary Progress

Summary

Milestone

Summary Progress

Summary

Project Summary

External Tasks

External Milestone

Project Summary

External Tasks

External Milestone

Deadline

Deadline

Deadline

Deadline

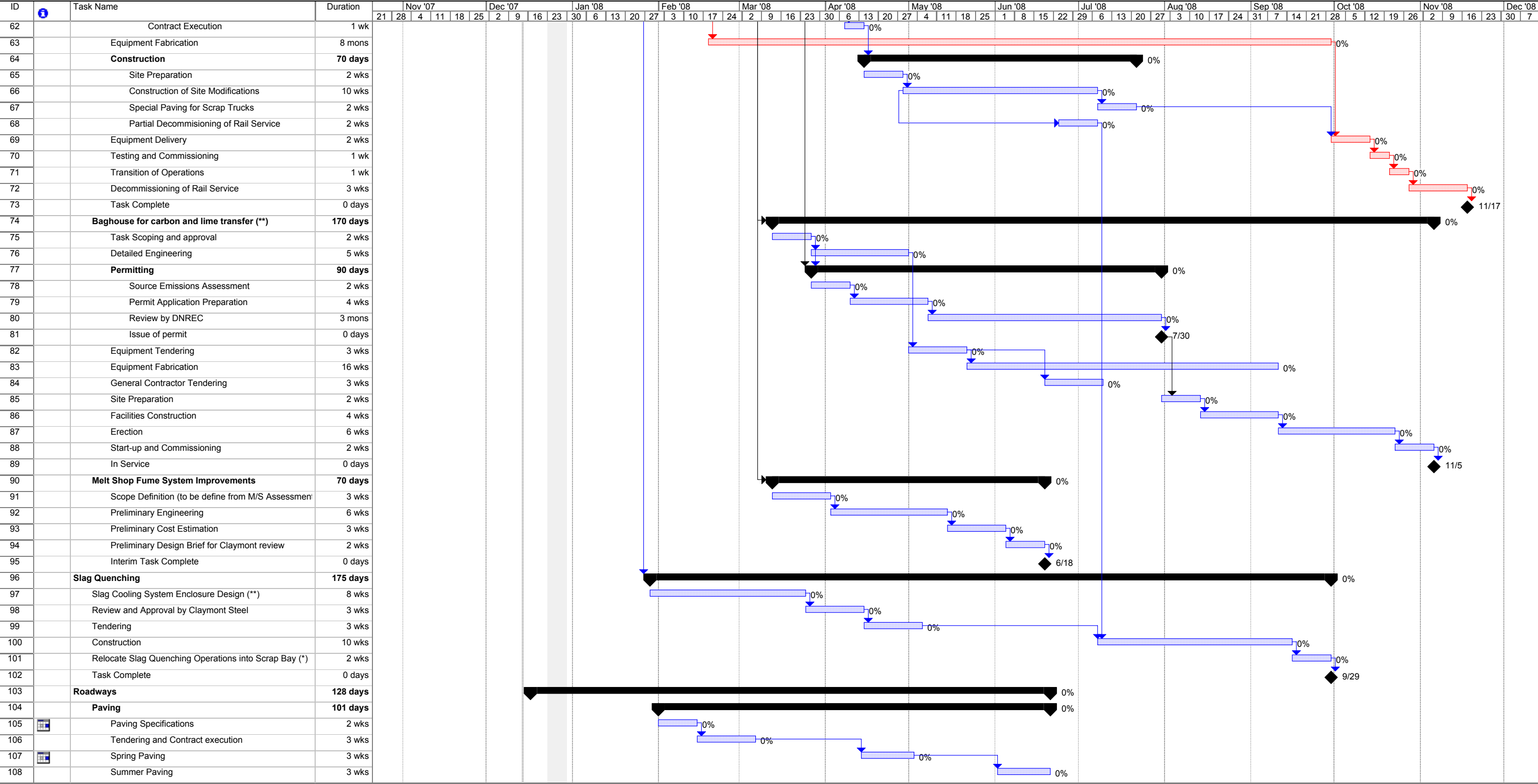
Notes:
(*) - Subject to approval of "Rubber Tire" project by Claymont Steel
(**) - Subject to outcome of melt Shop Fume System Assessment

Page 1 of 3

ET PN: 98250

Claymont Steel
Implementation Plan
Dust Control Projects

Revision 1
December 14, 2007



Earth Tech Inc.
Printed: Dec 14 '07

Critical

Critical Split

Critical Progress

Task

Split

Task Progress

Baseline

Baseline Split

Baseline Milestone

Milestone

Summary Progress

Summary

Project Summary

External Tasks

External Milestone

Deadline

Summary

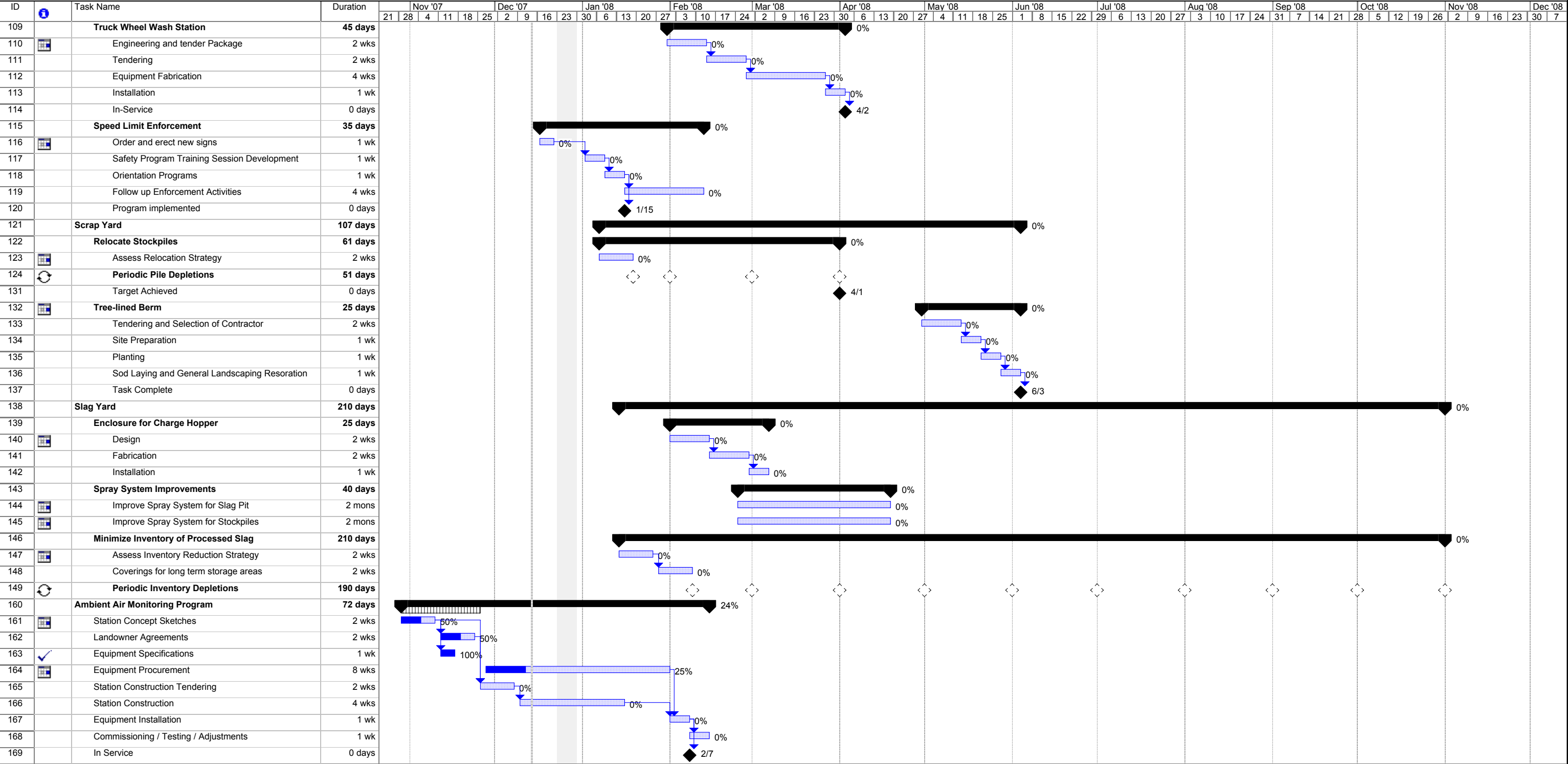
Notes:
(*) - Subject to approval of "Rubber Tire" project by Claymont Steel
(**) - Subject to outcome of melt Shop Fume System Assessment

Page 2 of 3

ET PN: 98250

Claymont Steel
Implementation Plan
Dust Control Projects

Revision 1
December 14, 2007



Earth Tech Inc.
Printed: Dec 14 '07

Critical

Critical Split

Critical Progress

Task

Split

Task Progress

Baseline

Baseline Split

Baseline Milestone

Milestone

Summary Progress

Summary

Project Summary

External Tasks

External Milestone

Deadline

Notes:
(*) - Subject to approval of "Rubber Tire" project by Claymont Steel
(**) - Subject to outcome of melt Shop Fume System Assessment