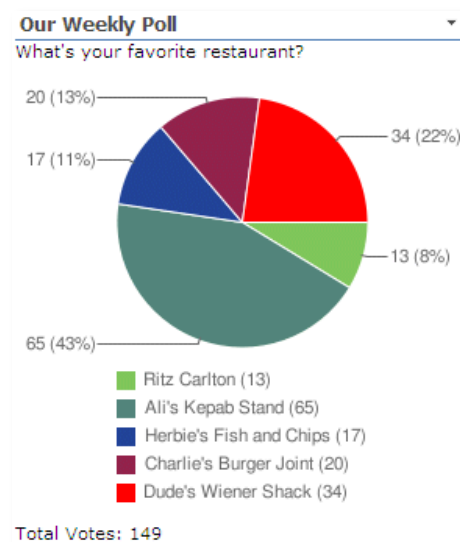


Quick Survey Web Part

© AMREIN ENGINEERING AG

Version 1.0

March 2010



Description

The Quick Survey Web Part allows to quickly publish simple user polls/votings. It allows to define one question and multiple answers. The poll results are displayed as a graphical pie or bar chart. Each user can only vote once. As soon as a user has voted, the poll result chart is displayed.

The Web Part can be used both with Windows Sharepoint Services V3 and MOSS.

The following parameters can be configured:

- Question and related Answers
- The Poll expiration date
- Pie chart or Bar chart result display

Prerequisites

Before you attempt to install the solutions you need to make sure that you have the following installed on your server(s):

- Microsoft Office SharePoint Server 2007, WSS 3.0 or Sharepoint 2010

Installation

Manual Installation

1. download and unpack the **AESurveyWebpart.zip** file.
The ZIP archive contains the AESurveyWebpart.dll and the AESurvey.webpart files.
2. drop the **AESurveyWebpart.dll** either into the SPS web application bin directory or into the GAC of your Sharepoint server (c:\windows\assembly).
3. add the following line to the "<SafeControls>" section of your Web.Config file.
Please make sure that the line is added as one single line (no line breaks):

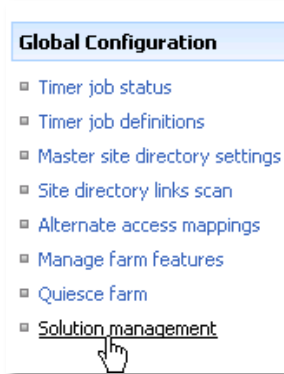
```
<SafeControl Assembly="AESurveyWebpart, Version=1.0.0.0, Culture=neutral,
PublicKeyToken=d9405ca020babc83" Namespace="AESurveyWebpart" TypeName="*" Safe="True" />
```

4. from the top site go to "Site Actions/Site Settings/Modify All Site Settings/Galleries/Web Parts"
5. use the "Upload" menu option to upload the **AESurvey.webpart** file.

Automatic Installation

1. Unpack the **AESurveyWebpart.wsp** and **Install.bat** files from the Zip Archive and place the 2 files onto your Sharepoint Server.
2. Add the Solution by either running **Install.bat** or manually entering:
`stsadm -o addsolution -filename AESurveywebpart.wsp`

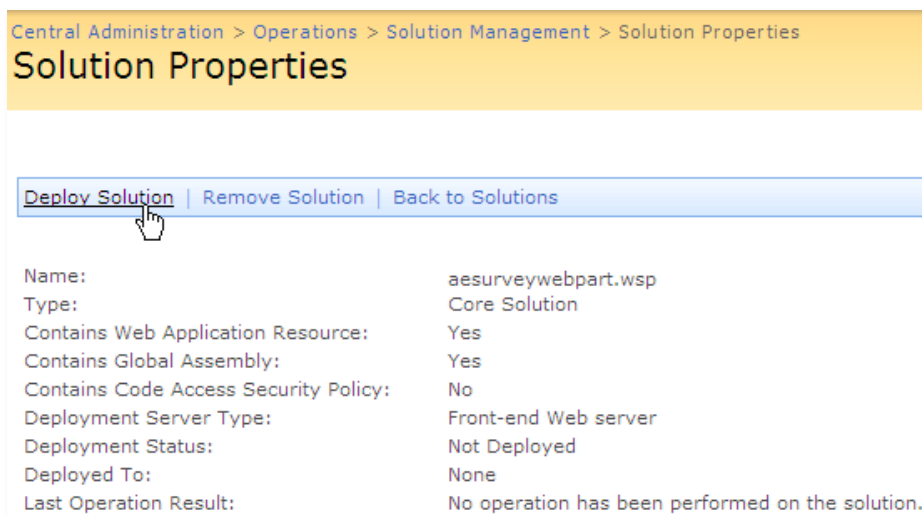
3. Deploy the solution by navigating with your browser to “Central Administration->Operations->Solution Management”:



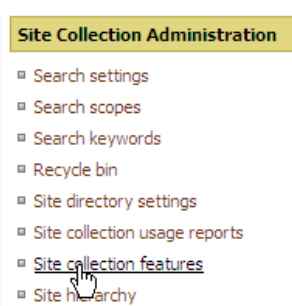
4. You should now see the **AESurveyWebpart.wsp** in the farm’s solution store:



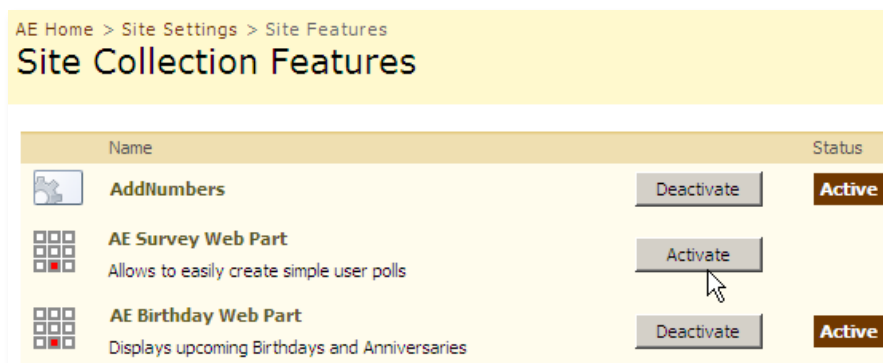
Click on “AESurveyWebpart.wsp” to deploy the solution:



5. Proceed to activate the feature by navigating to the “Site Actions/Site Settings” page in your top-level site:



Choose “Site collection features” to navigate to the Site Collection Features page:

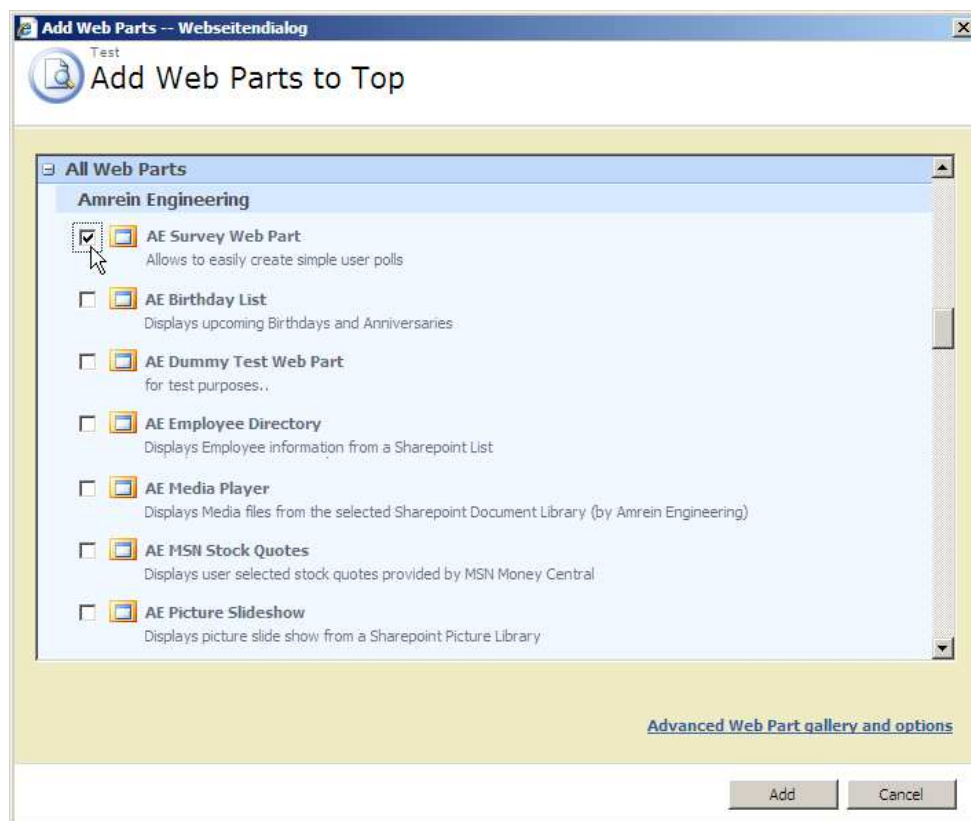


Activate the “AE Survey Web Part” feature

Adding the Web Part to a Page

Navigate to a page where you would like to place the web part and choose "Site Actions/Edit Page"

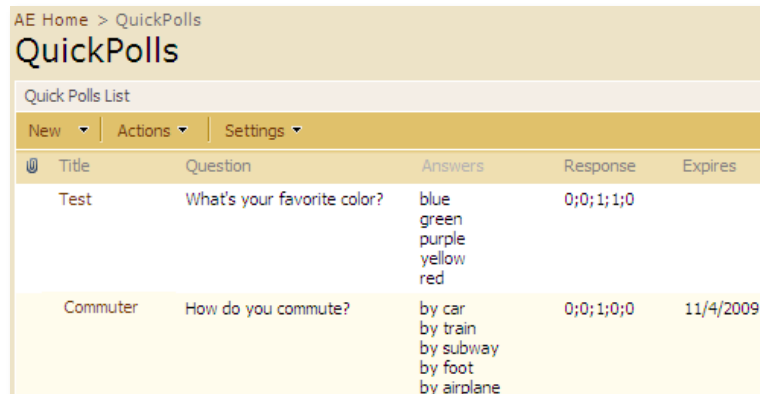
1. Add the web part to the appropriate zone. The web part is listed in the "Amrein Engineering" gallery section :



Web Part Configuration

“QuickPolls” Sharepoint List:

Create a new “QuickPolls” Sharepoint List in the Site Collection root. This List will hold the Poll definition and Poll results. Please make sure that all users which should be able to vote have at least “Contribute” List permissions.



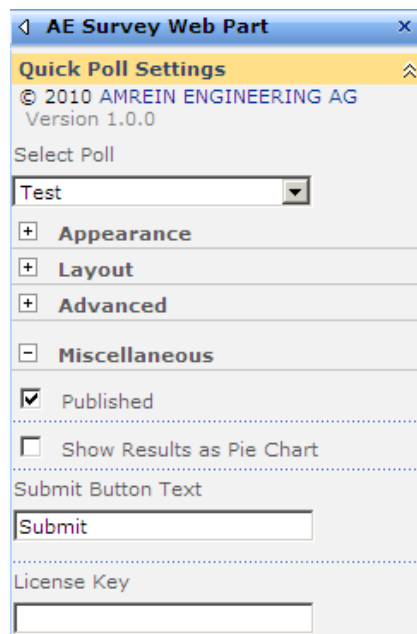
| | Title | Question | Answers | Response | Expires |
|--|----------|-----------------------------|---|-----------|-----------|
| | Test | What's your favorite color? | blue green purple yellow red | 0;0;1;1;0 | |
| | Commuter | How do you commute? | by car by train by subway by foot by airplane | 0;0;1;0;0 | 11/4/2009 |

The List should contain the following columns (field type in parentheses):

- **Title** (default List “Title” field)
- **Question** (Single line of text)
- **Answers** (Multiple lines of text, place each answer on a separate line)
- **Response** (Single line of text, automatically filled-in by the web part)
- **Expires** (Date and Time)

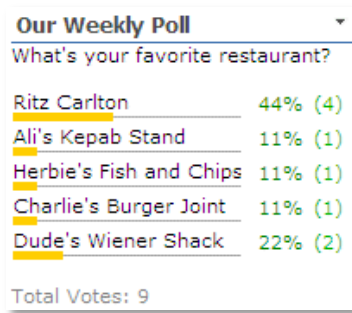
Web Part Settings:

Configure the following Web Part properties in the Web Part Editor “Quick Poll Settings” (at the top) and the “Miscellaneous” pane section as needed:

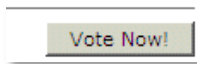


- **Select Poll:**
Select the name of the Poll that has been defined in the Sharepoint “QuickPolls” List.
- **Published:**
untick this box if you want to hide the web part during the poll configuration setup phase. The web part will then be only visible if the page is in "Edit Mode".

- **Show Results as Pie Chart:** check this box if you want to display the poll results as a pie chart. Leave this box unchecked if you rather want to display the results as a space saving bar chart:



- **Submit Button Text:**
Allows you to change/localize the default button text ("Submit")



- **License Key:**
enter your Product License Key (as supplied after purchase of the "Image Survey Web Part" license key).
Leave this field empty if you are using the free 30 day evaluation version or if you choose one of the License Activation described below.

License Activation

You have the following 3 options to enter your License Key:

1. Enter the License Key into the corresponding "License Key" field in the web part configuration pane (See description above).

2. **WSP Solution Deployment:**

Add the **License.txt** file (as supplied by AMREIN ENGINEERING after having purchased a license) to the Solution at the following location:

`c:\Program Files\Common Files\Microsoft Shared\Web Server Extensions\12\template\features\AESurveyWebpart`

3. **Manual Deployment:**

Add the License Key to your web.config (typically found at `c:\inetpub\wwwroot\wss\virtualdirectories\80`) **<appSettings>** section as follows:

```
<appSettings>
  <add key="AEQP" value="AEQP-x-xxxxx-xxxxx-xx-xx" />
</appSettings>
```

Replace the "x" characters with your actual key values.

Please note that this method requires you to manually add the key to each Sharepoint application.