



Research Administration at MGH

*Presented by
F. Richard Bringhurst, M.D.
Sr. Vice President for Research Management*

*New Faculty Orientation
October 13, 2011*



Agenda

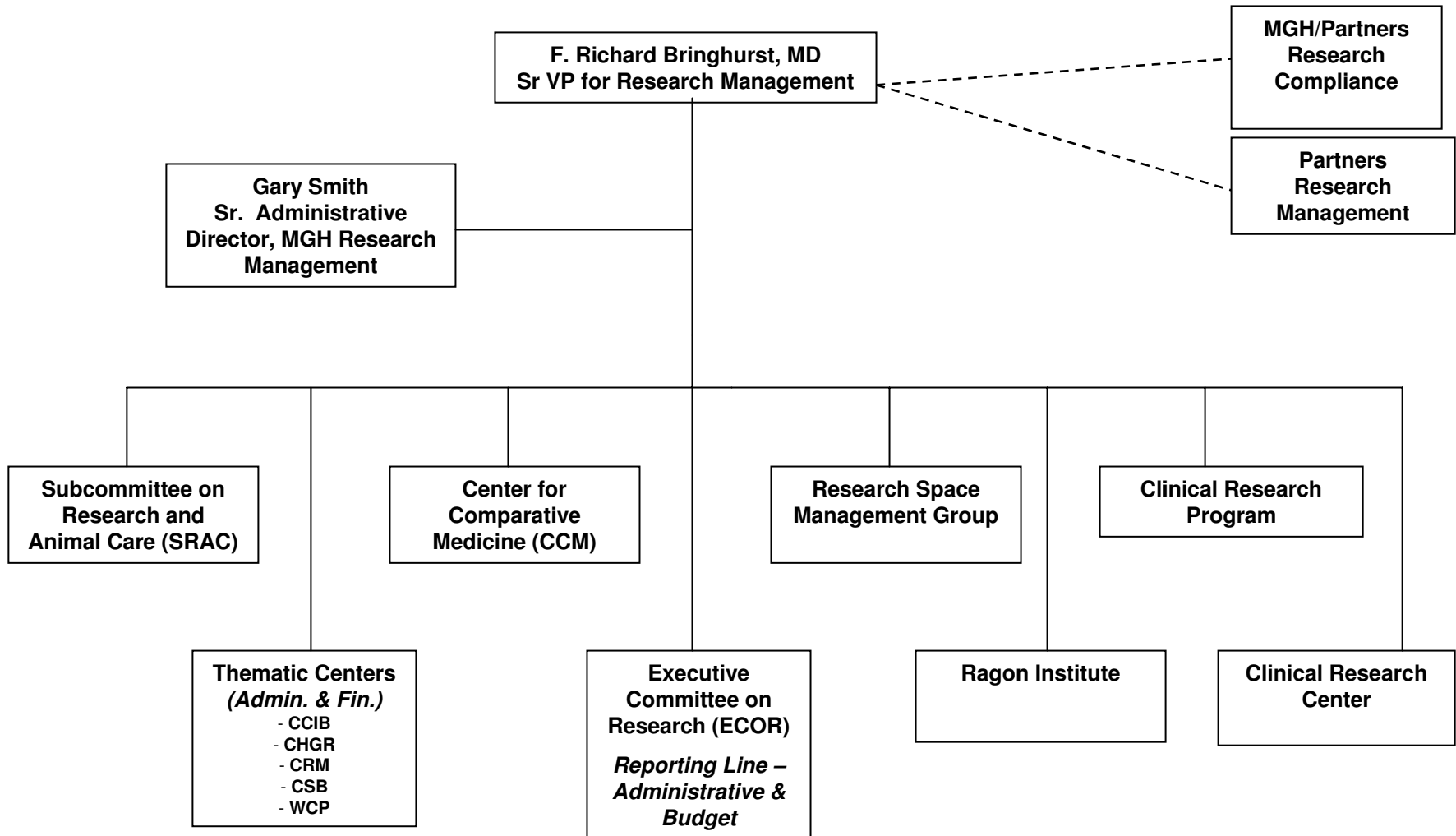
- What
- Why
- How

Addendum – Reference and Resource Materials

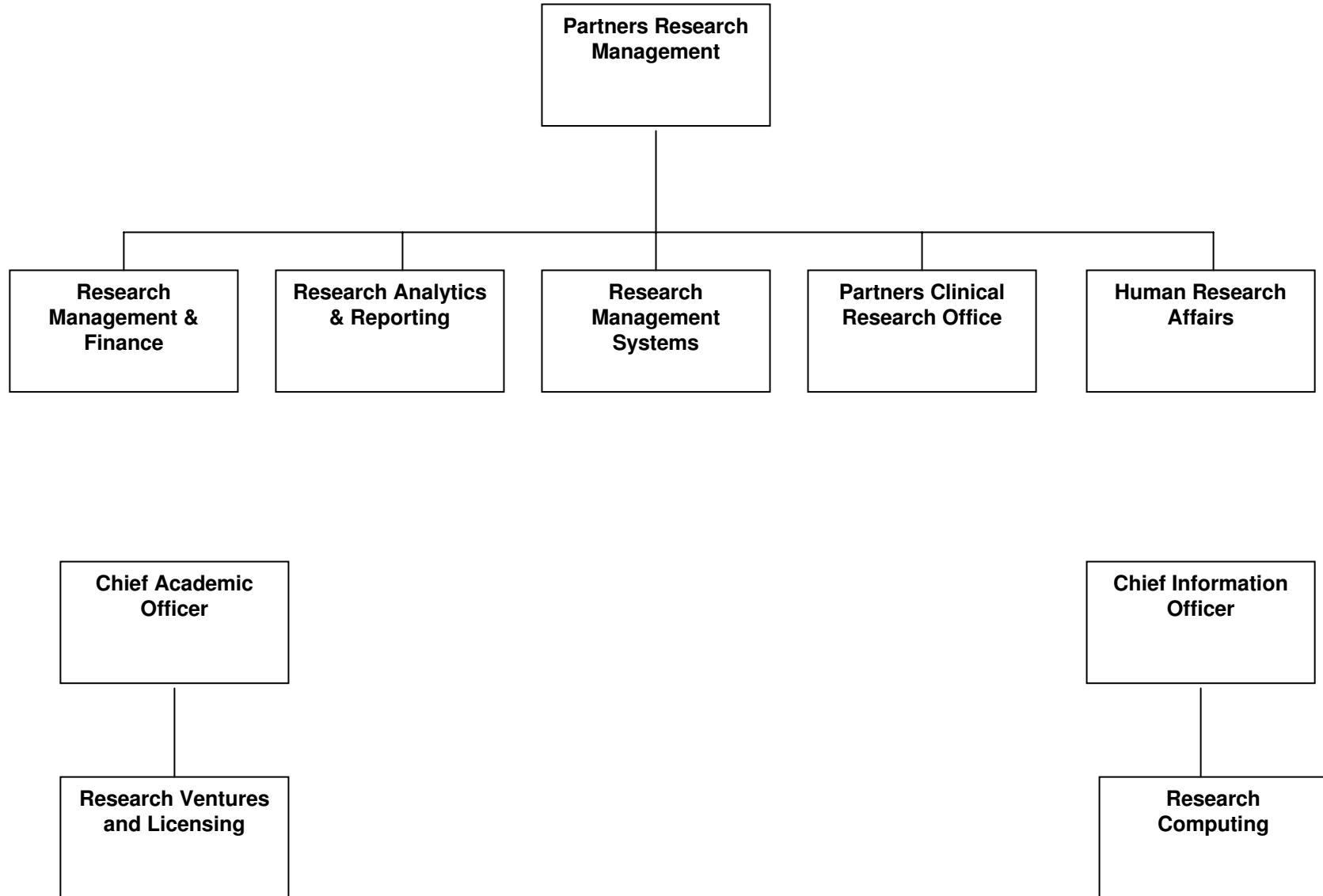
MGH Research Management Organizational Chart



MASSACHUSETTS
GENERAL HOSPITAL



Partners Research Management Organizational Charts



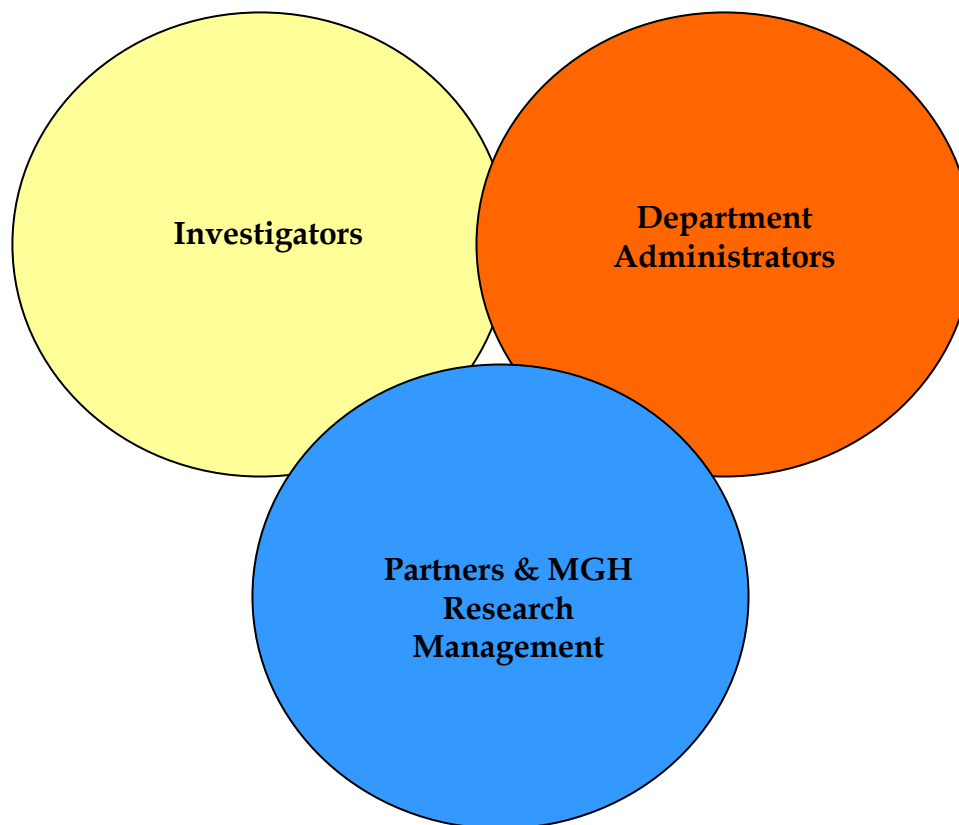
Research Management - Why



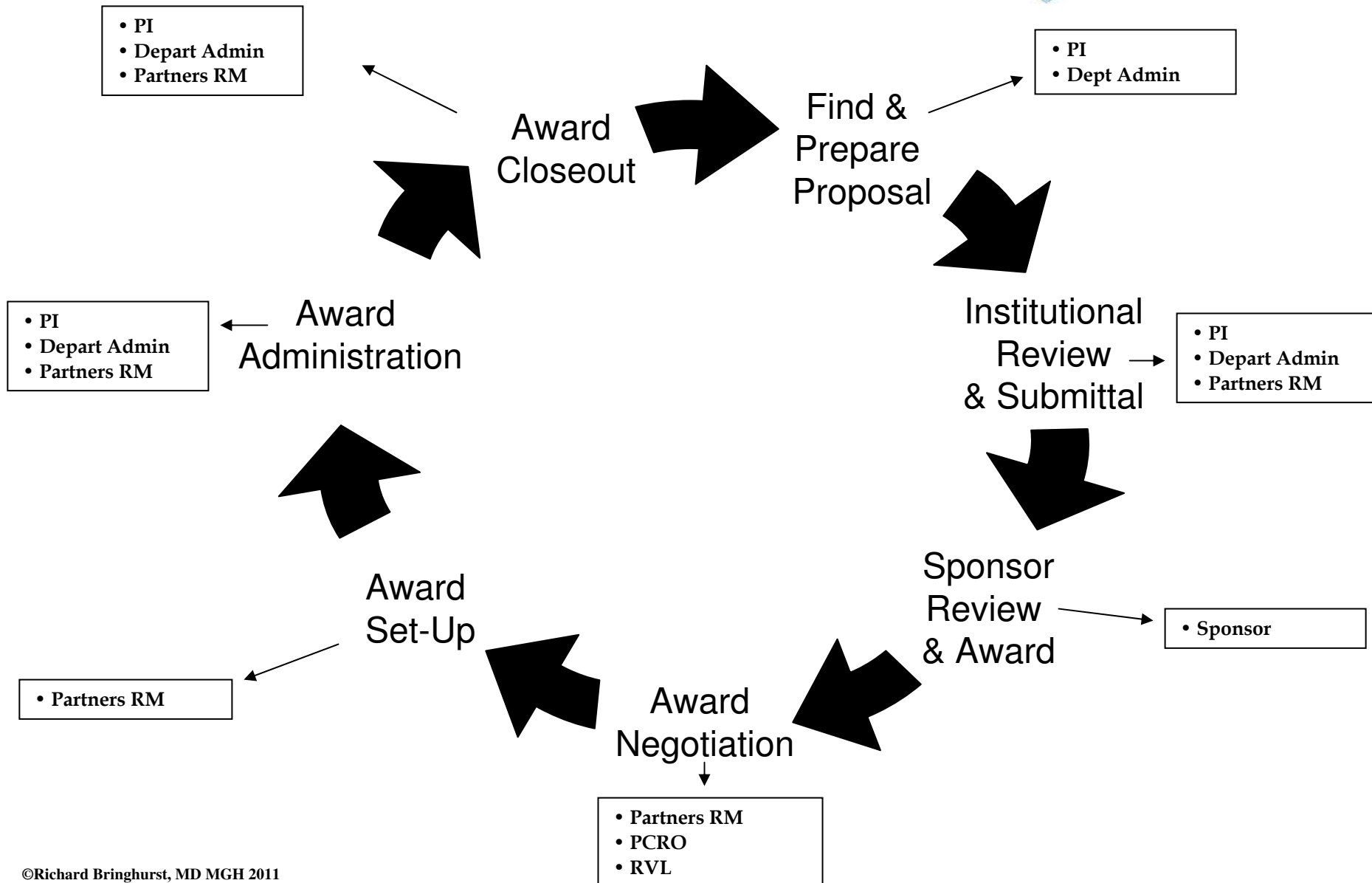
Sponsor and government rules and regulations require administrative oversight and compliance of research grants:

- Grant Application Submission
- Award Negotiation/Acceptance and Set-up
- Financial Management
- Subcontracts – Negotiation and Monitoring
- Effort Reporting
- Human and Animal Research
- Biosafety
- Intellectual Property
- Conflict of Interest
- Scientific Misconduct
- Grant Close-out
- Financial and Technical Reporting

Roles & Responsibilities



Lifecycle of a Research Award - Roles & Responsibilities





Reference and Resource Materials



MASSACHUSETTS GENERAL HOSPITAL

RESEARCH INTRANET

MGH Research Intranet
 Google Web Search

[DEPARTMENTS & CENTERS](#)
[GRANTS & FUNDING](#)
[POLICIES & PROCEDURES](#)
[RESOURCES](#)
[FORMS](#)
[NEWS & EVENTS](#)
[TOOLS](#)

- > Center for Comparative Medicine
- > Clinical Research Center
- > Clinical Research Program
- > Executive Committee on Research
- > Office of Research Career Development
- > Research Computing
- > Research Cores
- > Research Space Management
- > Subcommittee on Research Animal Care


MGH RESEARCH INTRANET

Welcome



Can't find a link? Try the new A to Z directory, located here, and under the Tools menu. [More](#)



Research Events Calendar Check out the new research events calendar here. [More >](#)

MGH WebMenus Daily menus for all MGH dining locations. [More >](#)

Quick Links:

- > InfoEd
- > Insight 2.0
- > MGH
- > MGH Intranet
- > Partners
- > Partners Research Management

MGH Clinical Research Program

- Provides support for investigators and study teams, advice and guidance for study participants, and education for all involved in clinical research to insure best clinical research practices

Site: <http://www2.massgeneral.org/crp/>

Clinical Research Center

- Provides a clinical research infrastructure for clinical investigators who conduct patient-oriented research

Site: <http://www2.massgeneral.org/crc/>

Center for Faculty Development

- Established to facilitate career development of ALL MGH faculty.
 - Office for Clinical Careers (OCC)
 - Office for Research Career Development (ORCD)
 - Office for Women's Careers (OWC)

Site:

<http://www2.massgeneral.org/facultydevelopment/index.html>

MGH Research Resources (cont)

Center for Comparative Medicine (CCM)

- Mission is to provide the highest quality laboratory animal husbandry and veterinary services to MGH investigators and to ensure that all research animals at MGH are maintained and used in accordance with pertinent laws, regulations and accreditation standards

Site: <http://intranet.massgeneral.org/ccm/>

Subcommittee on Research Animal Care (SRAC)

- Institutional Animal Care and Use Committee (IACUC) for the Massachusetts General Hospital and the Shriners Hospitals for Children

Site: <http://is.partners.org/aniweb/?subID=leftnav12>

Research Space Management

- Responsible for all aspects of research space allocation and configuration, including maintaining an inventory, optimization, density metrics and renovations

Site: <http://www2.massgeneral.org/rsmg/index.asp>

Partners Research Management

- Grant Proposal Submission: Review & Approval
- Post-award Financial Management
- Financial Status Reports
- Billing Sponsors
- Receiving and Posting Cash
- Subcontract Negotiation
- Time & Effort Reporting
- Indirect Cost Negotiation
- Grant Management Training
- High-level Financial Reporting
- Research Cores Oversight

Site: <http://phsresearchintranet.partners.org/>

Partners Clinical Research Office (PCRO)

- Responsible for developing, negotiating and executing agreements for industry-sponsored clinical research
 - Clinical Trial Agreement
 - Clinical Research Support Agreement
 - Confidentiality Agreement
 - Personal Consulting Agreement
- Budget development service and negotiation with sponsors
- Prepares Medicare Coverage Analyses (MCA) for all non-oncology clinical research protocols
- Assistance with Medicare Petitions & renewals for device studies

Site: <http://www.partners.org/pcro/default.aspx>



Research Ventures and Licensing (RVL)

- Negotiate research and material transfer agreements
- Manage intellectual property
- Identify opportunities and market ideas to industry
- Develop Agreements for commercialization of Intellectual Property
- Advice on Start-up Opportunities
- Provide Consulting Agreement review

Site: <http://rvl.partners.org/home>

Partners Resources (cont)



MASSACHUSETTS
GENERAL HOSPITAL

Partners Human Research Affairs

Partners Human Research Committee

- IRB of Partners Research Management
- IRB applications submitted electronically through Insight (eIRB)
Site: <http://healthcare.partners.org/phsirb/home.htm>

Human Research Quality Improvement Program

- Provide support and education to ensure optimal conduct of human research within the framework of federal regulations, institutional policies, and good clinical practice.
Site: <http://www.partners.org/phsqi/>

Human Embryonic Stem Cell Research Oversight Office

- Provide institutional oversight of hESC research

Partners Resources (cont)

Partners Research Computing

- Enterprise research infrastructure and services (i.e. storage, computer support)
- Partners Healthcare Center for Personalized Genetic Medicine (PCPGM)
- The Partners Biorepository for Personalized Medicine Team
- The Research Patient Data Registry (RPDR)

Site: <http://rc.partners.org/>

Partners Research Applications Group

- Development and maintenance of IT systems supporting research
- InfoEd
 - Proposal Development
 - Proposal Tracking
- Insight
 - Financial Management
 - Effort Reporting
 - Conflict of Interest
 - IRB and SRAC Application Submission
 - Clinical Trial Budget Builder