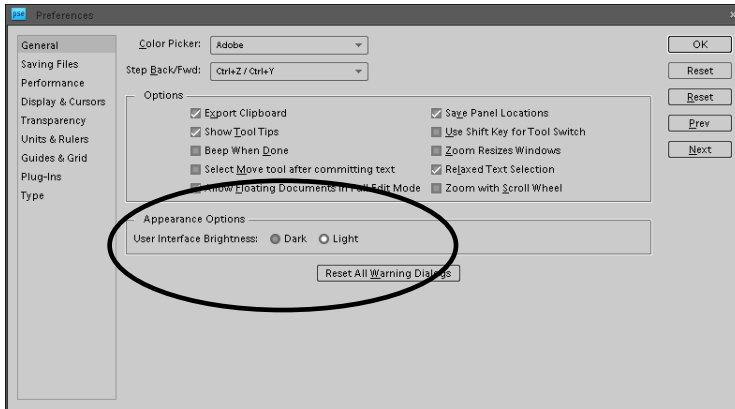


Photoshop Elements 8 Updates to Digital & Hybrid Scrapbooking & Card-Making

By Patty Debowski

Updated January 1, 2010

Photoshop Elements 8 is similar to Version 5, but it looks very different because of the color change however in this version Adobe has allowed you to change the interface color. To change the background (interface) color choose Edit>Preferences>General (Ctrl>K-shortcut) and click in the light button shown circled below. You will need to change it in the Editor and Organizer.



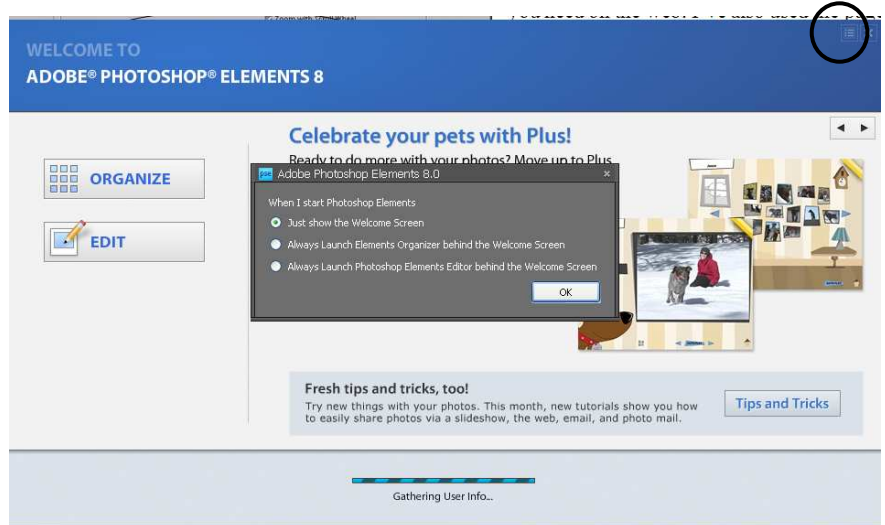
I've put this in a PDF format so that you can print it out and keep it with your book. If you're like me, you don't want to stop scrapping to go searching for the information you need on the web. I've also used the page numbers from the book, so you can easily tell if there are updates for the information you're reading at the time. My book can easily be used for all versions of Photoshop Elements.

Page 47 Welcome Screen

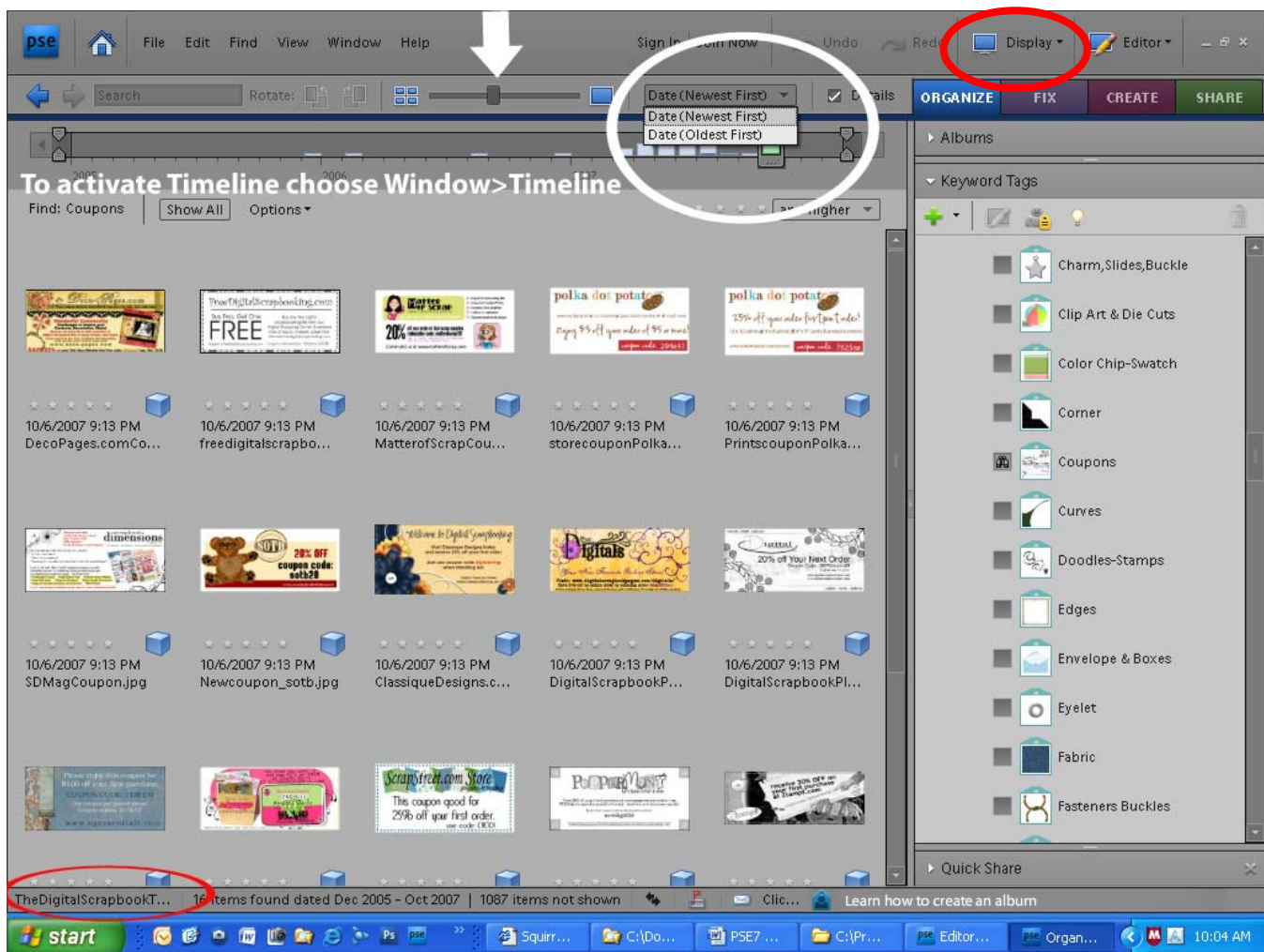
The Welcome screen has changed. To bypass the Welcome Screen click on the icon in the top right corner (circled) and choose a new option.

The Organizer

My happiest customers are those that have purchased my Organizer Catalog Back-up DVD and installed it on their computer. They instantly have all of the items on the book DVD organized by color, type, designer, theme, etc., and have a huge head start on organizing their digital scrapbooking supplies. If you are struggling with organization, please check this item out in my store.



The screen shot below shows some of the digi-scrapping store coupons available to my customers who purchase the book. If the coupon is expired try it anyway most of the stores that contributed coupons have extended the expiration dates. If it won't work contact the website and they will probably extend the expiration date for you because they're all looking for new customers.



Once again, the biggest difference between the version 5 & 8 Organizer is how it looks. They have also moved a few items. Basically they have flipped the Organizer. What used to be at the top is now at the bottom and vice versa!

If your Organizer screen does not have the Menu bar please read the tutorial on our What's New page at www.TheDigitalScrapbookTeacher.com.

Collections are now called **Albums**. The advantage of using an Album/Collection is that you can change the order that the images appear which is helpful if you are creating a slide show with the Organizer.

The **Name of the Open Catalog** is now found at the bottom of the screen instead of at the top (shown circled in red).

The option to display your images by Import Batch or Folder Location has been moved. Click on the **"Display"** icon (circled above in red) to find this option.

The slider to increase/decrease the size of your image thumbnail has been moved from the bottom of the screen to the top (see white arrow).

The **Star Tags** have been changed from version 5. The Photoshop Elements 5 Organizer had a set of tags for 5-1 stars as a default. These came in handy when I'd take several photos of the same thing that were each a little bit different. I'd find the best one and tag it with the 5 Star tag. Now the stars are located below the image. Click on the appropriate star to tag it, or select several photos at a time and click on a star to tag several. To find all of the 5 star tags, click on the 5 stars on the top right of the screen. Right clicking on the image also allows you to add star tags.

Fix will display several of the Quick Fix type options available to fix your photos in the Organizer. Some of these options were, and still are available by clicking on the Edit tab, or right clicking on the image thumbnail.

Create & Share were also in version #5. If you want to order photos, photo books, or calendars through Adobe and Kodak this is the place to do it.

Facial Recognition-I am still struggling with this new added "feature" of the Organizer as are others. If you are having trouble with this...it's not just you!

Page 48

Organizer Catalogs

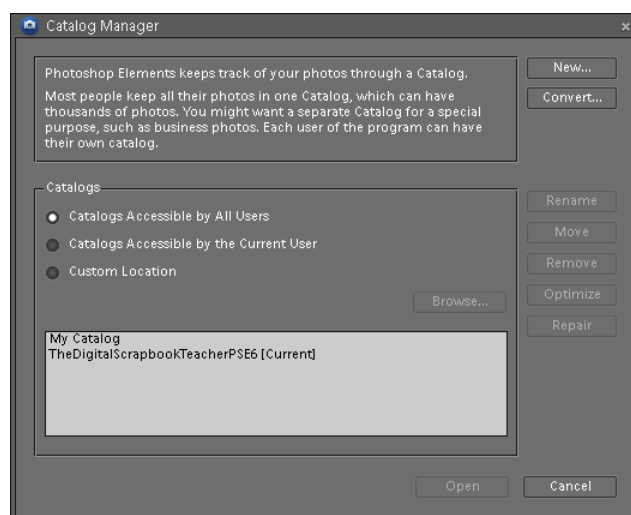
Since I am the only person who uses my computer I have all my Catalogs Accessible by All Users. You may want to change this option.

If you are used to working between two catalogs as I suggest, (photos & scrapbook supplies), be aware that the open button has been moved from the top of the dialog box to the bottom. This takes a little bit of getting used to.

Photoshop Elements 8 Catalogs are now stored:

Windows XP: C:\Documents and Settings\All Users\Application Data\Adobe\Photoshop Elements\Catalogs

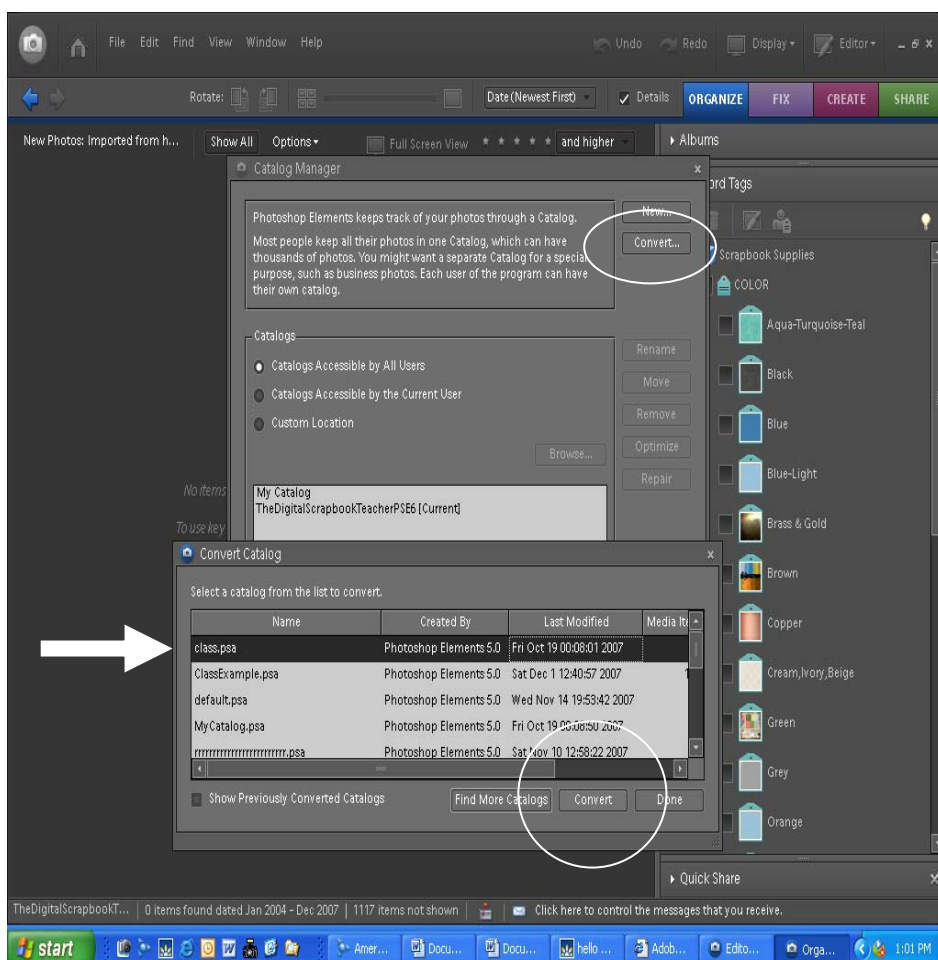
Windows Vista: C:\Program Data\Adobe\Photoshop Elements\Catalogs



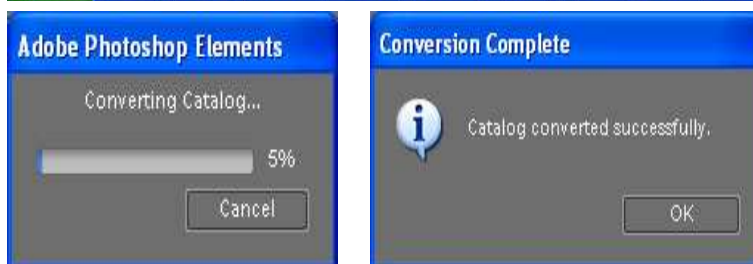
Converting a Catalog

If you have upgraded from an older version of Photoshop Elements and used the Organizer, you will need to convert the catalog. This is easy, but may take some time depending on the size of the catalog. Choose File>Catalog>Convert and choose the catalog you wish to convert for use in version 8. Click on Convert at the bottom of the screen. Click on Done when you're finished.

Be careful if you choose to go back to an earlier version and work with the Organizer. If you import images into the Photoshop Elements 5 (or other) Organizer it will not appear in the version 8 Organizer. They are two different catalogs once converted.



Installing My Instant Tags File to Save You Hours of Work Page 50



If you choose to install these tags (included on the book DVD) you will need to tag all of the items on the book DVD which took me about 10 hours. I have available for purchase, everything already tagged. This is not a super sales job! I have so many people who didn't understand they could purchase all of the items tagged and wished they would have purchased this item in the very beginning! If you purchase my Organizer Catalog you do NOT have to install the tags file on the Book DVD, because ALL the work is done for you. Install the Organizer Backup Catalog and start digi-scrapping with over 1000 digital elements already tagged.

With the Organizer open, click on the bright green + symbol under the word Keyword Tags (NOT Albums), choose From File and locate the file. To Install my instant tag file go to the book DVD and Open the Photoshop Elements File, inside that file is a folder called Organizer Tags, and inside that one is a file called Tags. This is the file you need. In earlier versions when I installed these tags it was lightening fast. But in version 8 it took about 3 minutes or so.

“Tags” have been changed to “Keyword Tags”

Page 51

To add new tags, categories, and sub-categories, click on the large green + sign, the New button has been removed.

“Back to All Photos” has been changed to “Show All”

Page 53

Missing Files in the Organizer

Page 59

The icon for a missing file has been changed. I have seen the same broken file icon in a gray color and a question mark in the upper left corner of the image on different occasions. The result is the same, you have moved or deleted the original image.

Organizer Problems

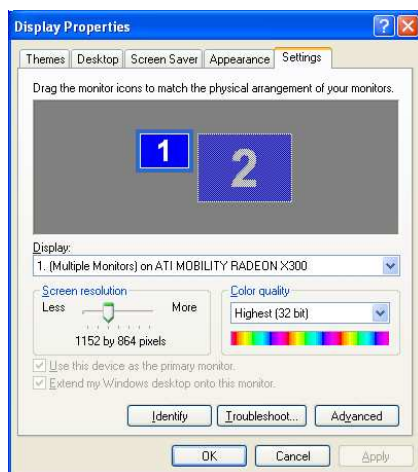
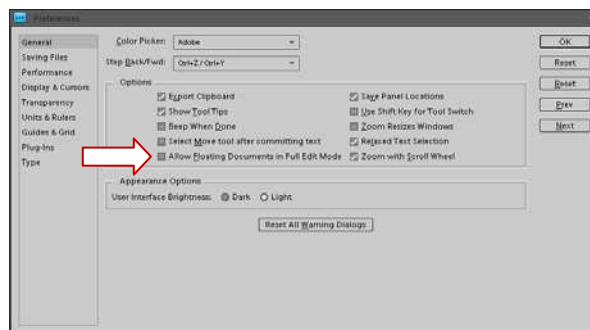
Page 61

Recover has now been replaced with **Optimize & Repair**.

The Photoshop Elements Editor Page 73, 77, & 78



******Arrange Menu**-If you are having difficulty working in Maximize or Cascade mode go to Edit>Preferences and uncheck the button “Allow Floating Documents in Full Edit Mode”. This will save your sanity!



If you are used to your tool bar being in a single column you will need to change your display properties by right clicking on your desktop screen. On my monitor I had to change my screen resolution to 1152 x 864 to get the tool bar in a single column. To change your screen resolution, right click on your desktop screen, the Display Properties dialog box will appear, click on the Settings tab and adjust the Screen Resolution slider. Click on Apply and then OK.

While this may make your tool bar easier for you to use it may make seeing things on your screen more difficult because they're smaller at this setting.



Clicking here brings up the Welcome Menu

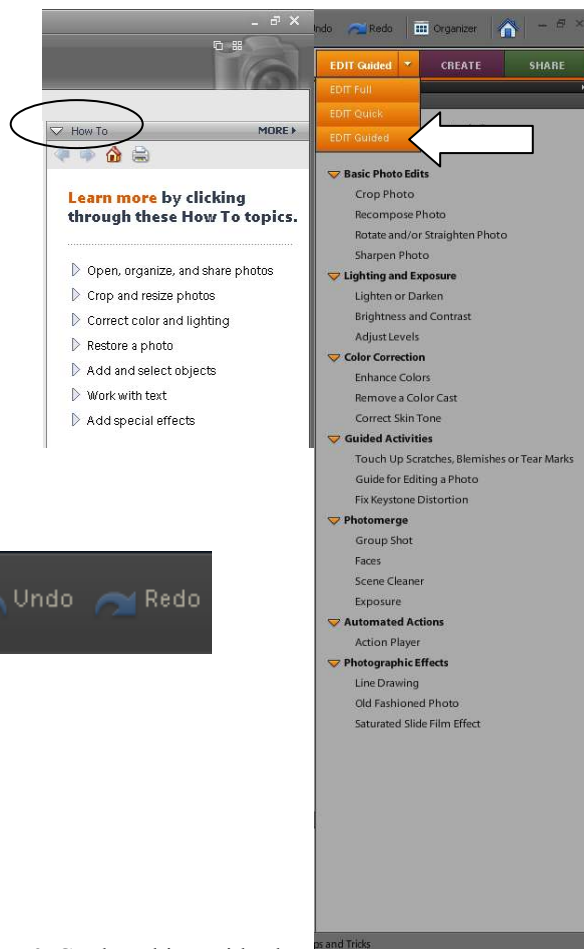
“How To” has been replaced by Guided Edit

This is a great feature for the beginning Photoshop Elements user.

To activate, Click on Edit and then Guided and choose the topic you wish to follow.

For Quick Fix, choose Edit and click on Quick.

Share, Create, & Organizer Icons have also changed in appearance.



79-80 Undo & Redo

The Undo & Redo buttons have returned.

The option to increase the size of your Undo history (History States) beyond the default of 50 has now been moved from Edit>Preferences>General Preferences (Ctrl>K), to Edit>Preferences>Performance.

Move Tool

Move/Copy a Photo or Scrapbook Element to another File-Method 2

Page 85

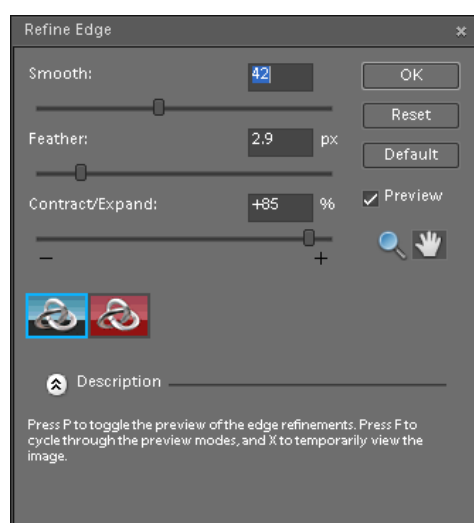
With Photoshop Elements 8 you may drag up from the bin or down to the bin when building your pages just as shown in the book. Dragging up will not work with Photoshop Elements 6 or 7, this is a good change!

Changing Blending Modes with the Move Tool

Page 91

Using the scroll wheel no longer works, use the arrow keys.

Selections – New Feature Refine Edge Page 110



Select>Refine Edge has been added. This command will also smooth, feather, contract and expand a selection.

This option should be displayed on the Option bar for the Lasso, Magic Wand, and Quick Selection Tools.

Marquee Tool

Page 112

Rectangular & Elliptical Marquees are no longer shown on the Option Tool Bar. Right click, or click and hold your mouse to display both tool options on the tool bar and choose the one you want. With the Marquee Tool selected, typing the letter M will also cycle through the tools.

Lasso Tool Page 114

The three Lassos are no longer shown on the Option Tool Bar. Right click, or click and hold your mouse to display the tool options on the tool bar and choose the one you want. With the Lasso Tool selected, typing the letter L will also cycle through the tools.

The Refine edge option was also added to the Option Bar if it's not showing on Option Bar choose Select>Refine Edge.

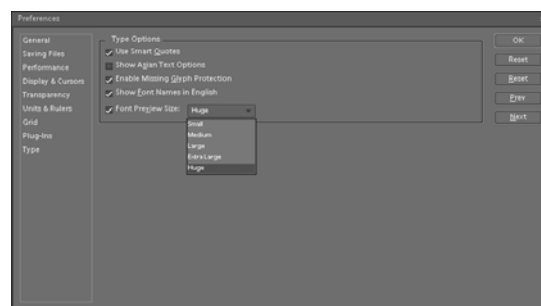
Magic Selection Brush Tool (F) Page 120

This tool has been replaced by the Quick Selection Brush which is sort of like the regular selection brush with a brain. This brush knows where to select automatically. Now the Selection Brush and the Quick Selection Brush share the same (A) shortcut.

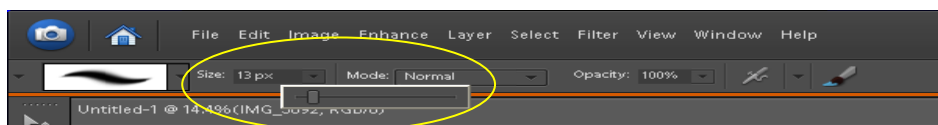
The two brushes are not shown on the Option Tool Bar. Right click, or click and hold your mouse to display the tool options on the tool bar and choose the one you want. With this tool selected, typing the letter A will also cycle through the tools.

Type Tool (T) Preferences Page 129

Adobe has now added two more font preview sizes for those of us with not so perfect eyes. Added choices are Extra Large and Huge.



The tools that use brushes no longer have a dropdown box where you can enter a brush size, it has been replaced with a slider bar. Continue to use your Bracket keys [&], it's easier to size your brushes this way.



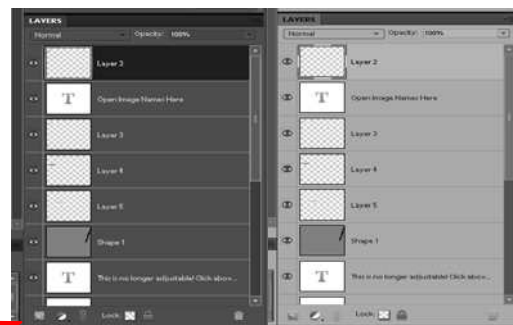
Ruler Page 190

Photoshop Elements 8 has added Guides. To add a Guide Line turn on the rulers View>Rulers. Click on the top Ruler and drag down and an aqua Guide Line will be added. Guide Lines do not print and can be used to line items up. Guide Lines can also be dragged from the side ruler. You may Clear, Add, or Remove Guide Lines from the View Menu. To

To change the color of your Guide Lines go to Edit>Preferences>Guides & Grid.

Layers Palette Options Page 195 Selected/Active/Targeted Layer

The Layers Palette has been renamed the Layers Panel. Depending on the Appearance Setting (Edit>Preferences>General) your selected layer may be light or dark. Using the Light setting the selected layer is very difficult to see as shown in the example on the right.



Create New Layer Page 198

Delete Layers Page 199

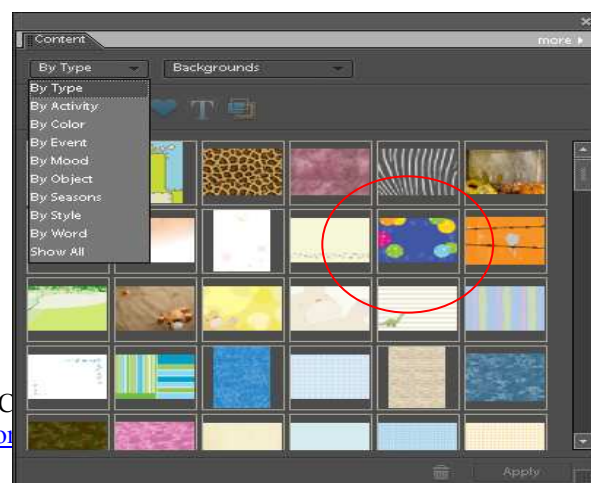
Link Layers Page 200

Lock Transparent Pixels Page 203

Lock All/Locked Layers Page 204

Adjustment Layers 209

The icons for the above items have been moved from the top of the Layers Palette to the bottom of the Layers Panel in Photoshop Elements 8.



Background Layer (Backgrounds) Page 205

The Artwork & Effects Palette has been replaced by the Content Panel. You can find this palette by choosing Window>Content. Drag this palette by the top tab into the Panel bin, or anywhere else you want to work with it. Now sorted by Content Type rather than Artwork Backgrounds, some of these are pretty nice. Make a new blank page and double click on the thumbnail, or right click and choose apply.

Your original background layer will be deleted and replaced by this smart object background layer. Be aware, that depending on the size of your new blank file and the background you choose, you may not get the same finished look. For example, if you use the background circled on a square page it will look different than this example, which is displayed in a landscape format.

Applying a theme from this menu will delete a background from this menu.

The smart objects behave differently than regular digital scrapbooking supplies. If you are confused don't use them. I occasionally use some of the frames.

Grouping Layers, Layer Clipping Groups, Clipping Masks Page 212

Photoshop Elements 8 is now using the term Create Clipping Mask instead of Group with Previous, the shortcut Ctrl>G (Cmd>G for Mac users) is still the same.

Layer Styles Page 213

The Artwork and Effects Palette has been replaced by the Effects Panel. Starting from the top left you will find the icons for filters, layer styles, photo effects, and all. Favorites have been moved to their own panel, which can be found by choosing Window and clicking on Favorites. To add an effect to your Favorites panel, right click and choose "Add to favorites". This example is for illustration purposes only, you can't get both boxes to open at the same time.

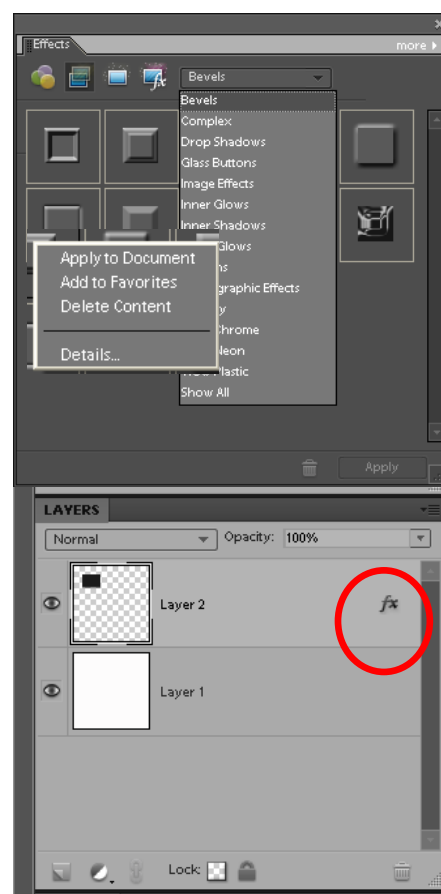
The icon to show that a layer style has been applied to a layer has also been changed to the symbol shown circled in red.

When using the Move Tool (V) and the Arrow keys to nudge a layer with a layer style on it such as a drop shadow, there is a glitch in the program that I have experienced and many users on messages boards have also. Try choosing Ctrl>T and sometime that allows you to use your arrow keys.

Some Layer Styles have been removed in Photoshop Elements 8 such as the Noisy Drop Shadow shown on page 215.

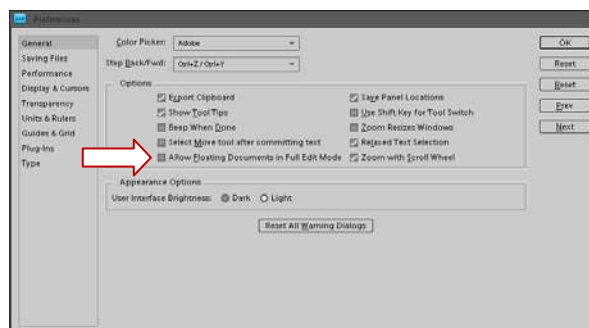
Adjusting Layer Styles Page 214

Yippee! You can now adjust the lighting angle on just one layer! Thanks for bringing this back Adobe! This is helpful for projects that need to be folded, like pop up cards, etc.



Maximize View and How to Get There Page 249

******Arrange Menu**-If you are having difficulty working in Maximize or Cascade mode go to Edit>Preferences and uncheck the button “Allow Floating Documents in Full Edit Mode”. This will save your sanity!



How to Make a New Blank File/Document (Scrapbook Page, Card, etc.) Page 250

A scrapbooking option has been added under presets for a 12 x 12, 8 x 8, & 6 x 6 page. You can choose the preset or just enter in the size yourself which I think is faster.

Templates Page 265-296

Photoshop Elements 8 is now using the term Create Clipping Mask instead of Group with Previous, the shortcut Ctrl>G (Cmd>G for Mac users) is still the same.

Special Effects Layer Styles Sepia Method Page 327

The Artwork & Effects palette is now called the Effects panel as shown above with page 213 information.

Installing Actions, Layer Styles, Brushes, Patterns, Textures and Custom Shapes Page 356

Adobe has made installing actions, layer styles, and custom shapes much more complicated in Photoshop Elements 6 - 8 than in earlier versions. For this reason I recommend purchasing a program that allows you to drag and drop your actions, layer styles, custom shapes and instantly install them.

To purchase the program go to www.grafficalicus.com and purchase the Add-O-Matic.

Download the file.

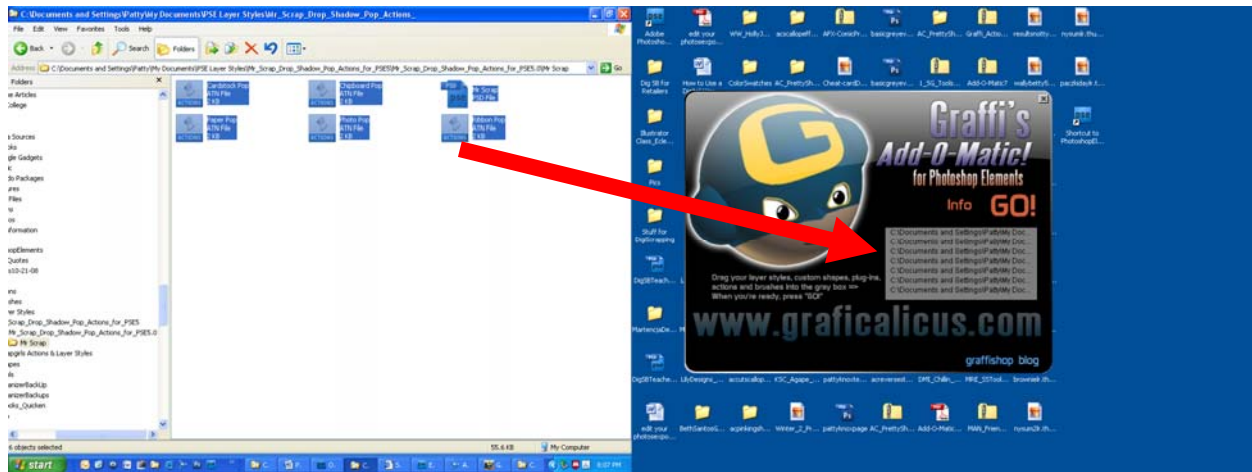
Unzip the folder.

Click on the icon and click run.

Close Photoshop Elements.

Click and drag your actions, layer styles, etc to the gray box.





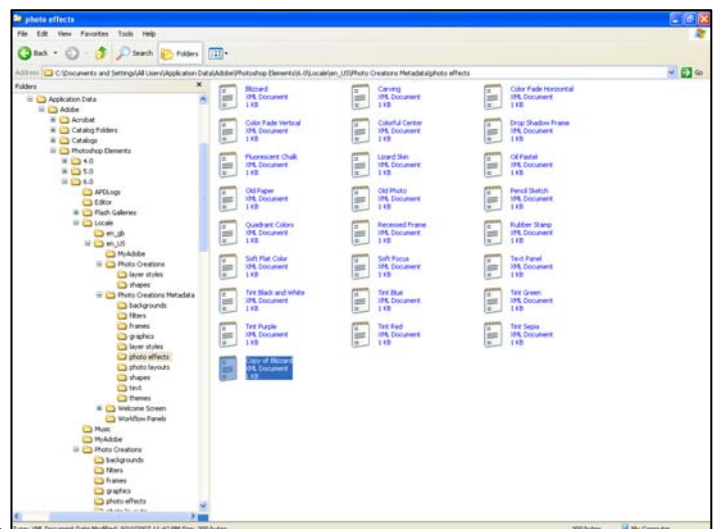
Click on the big red Go button. Choose Photoshop Elements 6 or 7. You will get a message saying your items have been added. You can launch Photoshop Elements by clicking where it says “Quit and Launch Elements 6 or 7”. It’s that easy!



If you want to install your items yourself you can still do it. The problem is, if you don’t have the XML file your installation won’t work quite right for actions, layer styles, and custom shapes. Brushes, Patterns, Textures, Swatches, and Gradients are easy. Shown below is step by step instructions to make your own XML file. It’s really not that hard, but it’s work I’d rather not do.

How to make your own XML file:

Go to one of the locations below where it says to install an XML file (example shows for actions). Right click on one of the files and choose copy. The XML file will be copied with the name “Copy of Original File” like shown.



Double click on the Copy of file to open it.

This file is written in code and I have no idea what it means which is similar to the Tags file on the Book DVD!

Make the changes shown circled in red. Your files will have different names. The example uses the Atomic Cupcake Chipboard action on the book DVD, located in the Photoshop Elements folder.

Choose File>Save.

Close the file by clicking on the red x in the upper right corner. Rename the file with the exact name you used in the XML file.

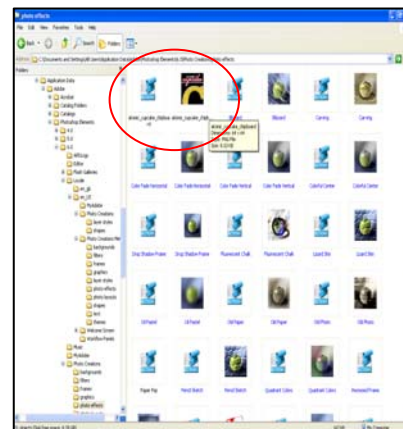
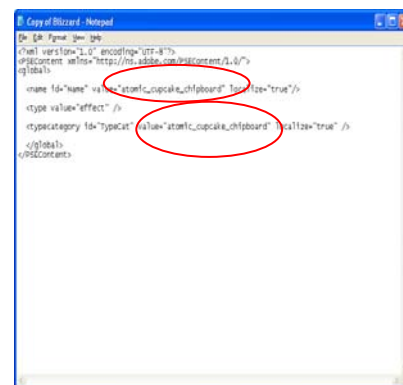
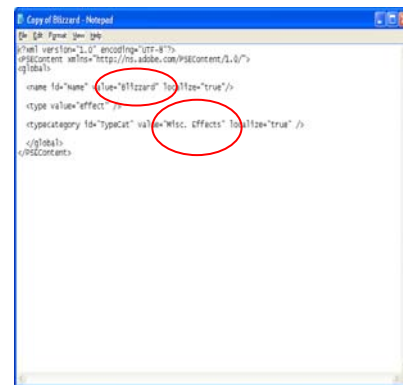
Actions – ATN Files – Example shown above

Actions used with older versions of Photoshop Elements come with a PSD file. Open the PSD file with Photoshop Elements and save it as a PNG file, when you save it you will need to save it with the exact name as the ATN file. Copy the ATN file and the PNG file to: C:\Documents and Settings\All Users\Application Data\Adobe\Photoshop Elements\7.0\Photo Creations\photo effects

If you have the XML file follow these directions, or make your own with the instructions above.

Install the corresponding XML file in C:\Documents and Settings\All Users\Application Data\Adobe\Photoshop Elements\7.0\Locale\en_US\Photo Creations Metadata\photo effects

If you're lucky your action will install perfectly the first time. If it doesn't close Photoshop Elements and re-open it. If that doesn't work you can try deleting or renaming this file C:\Documents and Settings\All Users\Application Data\Adobe\Photoshop Elements\7.0\Locale\en_US\MediaDatabase.db3"



Custom Shapes – CSH Files

C:\Documents and Settings\All Users\Application Data\Adobe\Photoshop Elements\8.0\Locale\en_US\Photo Creations\shapes

Install the corresponding XML file in C:\Documents and Settings\All Users\Application Data\Adobe\Photoshop Elements\8.0\Locale\en_US\Photo Creations Metadata\shapes

Layer Styles – ASL Files

C:\Documents and Settings\All Users\Application Data\Adobe\Photoshop Elements\8.0\Locale\en_US\Photo Creations\layer styles

Install the corresponding XML file in C:\Documents and Settings\All Users\Application Data\Adobe\Photoshop Elements\8.0\Locale\en_US\Photo Creations Metadata\layer styles

Brushes – ABR Files

C:\Program Files\Adobe\Photoshop Elements 8.0\Presets\Brushes

Gradients – GRD Files

C:\Program Files\Adobe\Photoshop Elements 8.0\Presets\Gradients

Patterns – PAT Files

C:\Program Files\Adobe\Photoshop Elements 8.0\Presets\Patterns

Textures – JPEG or PSD Files

C:\Program Files\Adobe\Photoshop Elements 8.0\Presets\Textures

Color Swatches – ACO Files

C:\Program Files\Adobe\Photoshop Elements 8.0\Presets\Color Swatches

Be sure to check out our templates sets! You can't beat the price and they're pre-tagged for the Photoshop Elements Organizer.



Word Template - Holiday