

# Southeast Missouri State University

## FACT BOOK

[IR Homepage](#)

### ***PART 1: MISSION AND ORGANIZATION***

- [Introduction](#)
- [University Facts](#)
- [Coordinating Board of Higher Education](#)
- [Board of Regents](#)
- [Institutional Mission & Priorities](#)
- [College & Department Administrative Structure](#)
- [Organizational Chart - Academic Affairs \(.pdf\)](#)
- [Organizational Chart - Administration \(.pdf\)](#)

### ***PART 2: MISSOURI SERVICE AREA AND MAJOR POPULATION SERVED***

- [Population of Primary Service Counties](#)
- [Missouri County Map](#)

### ***PART 3: PROGRAMS AND COSTS***

- [Accreditations](#)
- [Academic Programs Offered](#)
- [Graduation Cohort \(Retention rate\)](#)
- [Library Collections \(5 year\)](#)

- [Budget \(5 years\)](#)
- [Comprehensive Fee Schedule](#)

#### **PART 4: ENROLLMENT**

- [Enrollment Highlights](#)
- [Total Enrollment by Gender \(10 years\)](#)
- [Enrollment by Full-time and Part-time Status \(10 years\)](#)
- [Credit Hours & FTE \(10 years\)](#)
- [Enrollment by Class Level \(10 years\)](#)
- [Enrollment by College \(10 years\)](#)
- [On-Campus & Off-Campus Enrollment \(10 years\)](#)
- [Total Enrollment by Ethnicity \(10 years\)](#)
- [Enrollment by Ethnicity Undergraduate & Graduate \(10 years\)](#)
- [International Student Enrollment \(10 years\)](#)
- [In-State, Out-of-State, & Foreign Countries Enrollment Undergraduate & Graduate \(10 years\)](#)
- [Undergraduate Enrollment By County \(10 years\)](#)
- [Average Age of Students by College \(10 years\)](#)
- [Residential Vs. Commuter Enrollment \(10 years\)](#)
- [Traditional & Non-traditional Enrollment \(10 years\)](#)

#### **PART 5: FIRST-TIME FRESHMEN ENROLLMENT**

- [First-time Freshmen Enrollment Highlights](#)
- [First-time Freshmen Enrollment by Gender \(10 years\)](#)
- [First-time Freshmen Enrollment by Full-time, Part-time Status \(10 years\)](#)
- [First-Time Freshmen Profile \(5 years\)](#)
- [ACT Scores of First-Time Freshmen\(5 years\)](#)

#### **PART 6: FACULTY & STAFF INFORMATION**

- [Faculty and Staff Highlights](#)

- [Total Faculty & Staff by Ethnicity & Salary Class Intervals](#)
- [Faculty and Staff Rank/Positions \(5 years\)](#)
- [Average Salary of Faculty by Academic Rank](#)

#### **PART 7: APPENDICES**

- [Campus Map](#)

[Top of Page](#)

Updated: 07/18/2008



Experience **Southeast**  
Experience *Success*

1 6 8 2

## INTRODUCTION

### ***A BRIEF HISTORY***

The University was established in 1873 as the Southeast Missouri Normal School. By legislative enactment in 1919, the name was changed to the Southeast Missouri State Teachers College, and the college was authorized to grant degrees. By permission of the Missouri General Assembly, the name Southeast Missouri State College was adopted on September 21, 1946. The changing curricula and educational mission of the institution during the middle decades of the twentieth-century were reflected in the latest modification on August 24, 1972, when the Board of Regents, acting under authority from the Missouri Legislature, approved the name Southeast Missouri State University.

Throughout its history, the University has consistently offered a liberal education in the arts and sciences as a foundation for professional preparation of educators and has for the last half-century increasingly diversified into providing preparation in other professional areas. It is the only senior institution of higher education in southeast Missouri. Although the University serves both the nation and the region, it has a special commitment to southeast Missouri, including the counties of Bollinger, Butler, Cape Girardeau, Carter, Crawford, Dent, Dunklin, Franklin, Gasconade, Iron, Jefferson, Madison, Mississippi, New Madrid, Pemiscot, Perry, Reynolds, Ripley, St. Francois, Ste. Genevieve, St. Louis, Scott, Stoddard, Washington, Wayne, and the city of St. Louis.

### ***University Facts***

Southeast Missouri State University is located on the west bank of the Mississippi River in Cape Girardeau, a small town of about 40,000 residents. Southeast students have come from all 50 U.S. states and from many countries around the world. The campus is admired for its cleanliness, low crime rate and for the size and scope of its facilities and laboratories. At Southeast, one can meet and interact with people of all races, cultures and nationalities.

Southeast offers more than 200 areas of study in science, technology, education, the health professions, business and the liberal arts. These programs are arranged among five colleges, one school of polytechnic studies, one school of visual and performing arts, one school of graduate studies and one school of university studies. Some of the departments underwent a restructuring in the spring of 2003. The colleges and their restructured departments are shown in a later part of this section.

### ***Harrison College of Business***



The Harrison College of Business is located in Robert A. Dempster Hall. This three-story building was opened in 1996, and totals over 100,000 square feet. Located in Dempster Hall are eleven general classrooms, three large computer labs for business students and one open computer lab, the 400 seat Glenn Auditorium, conference rooms, faculty offices, large common areas available for student use, a student lounge and two fully-mediated interactive television rooms.

The Harrison College includes the departments of Accounting and Management Information Systems; Economics and Finance; and Management and Marketing. With interactive television and satellite systems plus technology packages in each classroom, Dempster Hall is used for a wide variety of campus programs and workshops hosted by the university, various businesses, and the community.

The Harrison College also offers a graduate program in Business Administration (MBA). The AACSB accredited MBA program offers students seven specialty options: General Management, Accounting, Environmental Management, Industrial Management, International Business, Financial Management, and Health Administration.

### ***College of Education***

Located in Scully Hall, is the nationally recognized College of Education. The teacher education program is a two-time recipient of the prestigious Christa McAuliffe “*Showcase for Excellence Award*.” The college offers both undergraduate and graduate programs through the departments of Education Leadership and Counseling; Elementary, Early, and Special Education; and Middle and Secondary Education.



The Child Enrichment Center provides daycare to Southeast students, faculty, staff, and local residents of the community, while also providing practical experiences for Southeast’s Child Care and Early Elementary Education majors.

Named after Southeast’s tenth president, Dr. Mark F. Scully, this building is also home to laboratories, computer labs, study lounges, a food cart area as well as space for pre-school, elementary, and secondary campus lab school programs. The college’s Instructional Resources and Technology Center specializes in meeting the computer and technology needs of education and child development majors. The lab contains many reference materials, computer workstations, video equipment for recording practice teaching lessons, and equipment for making other instructional materials.

### ***College of Health & Human Services***



The College of Health & Human Services was founded in 1989, is located in the Crisp Hall. This college is responsible for the administration of departments and programs in the health and human service fields, and is comprised of departments committed to an interdisciplinary model of education and performance. Bachelors’ and Masters’ degrees are offered through the departments of Aerospace Studies, Communication Disorders; Criminal Justice and Sociology; Health, Human Performance and Recreation; Human Environmental Studies; Social Work, and Nursing.

Undergraduate degrees are also provided through the departments of Aerospace Studies and Social Work. The Human Environmental Studies Department includes many diverse majors such as child development, fashion merchandising, interior design, hospitality management, and dietetics.



### ***College of Liberal Arts***

The College of Liberal Arts provides courses of study in the fine and performing arts, the humanities and the behavioral and social sciences. It includes the departments of Communication; English; Foreign Languages & Anthropology; History; Political Science, Philosophy and Religion; and Psychology. The Department of Psychology, located on Scully's fourth floor, offers a wide range of opportunities to its students including internships, student organizations, and participation in research projects. Graduate programs offered in this college include Art; English; History; Music and Public Administration.



Beginning in the fall of 2007 the Earl and Margie Holland School of Visual and Performing Arts was opened at the historic River Campus seminary. The River Campus is now home to the Art, Music, and Theatre and Dance departments.

### ***College of Science & Mathematics***

The College of Science & Mathematics consists of five departments: Biology; Chemistry; Computer Science; Physics and Engineering Physics, Environmental Science and Mathematics. It is home to a Southeast Regional Crime Lab and Godwin Center for Science and Mathematics.



The College of Science and Mathematics is housed in four buildings. The Rhodes and Magill Halls of Science include lecture and laboratory classrooms for the Biology, Chemistry and Physics departments. Johnson Hall includes lecture and laboratory classes for the Department of Mathematics. The Department of Computer Science takes advantage of the state-of-the-art technology in Dempster Hall.

Students in the College of Science and Mathematics also have access to experimental labs, computer labs, a Math Center, and a seismograph, which tracks the severity of earthquakes.

### ***School of Polytechnic Studies***

The School of Polytechnic Studies is located in the Otto and Della Seabaugh Polytechnic Building. The building includes five general classrooms with seventeen specialized teaching and research laboratories. Each classroom is equipped with multimedia and instructional technology as well as Internet access. There are also three fully networked computer labs and a 70-seat auditorium with teleconferencing and interactive televisions.



The School of Polytechnic Studies offers its programs through two departments. The Department of Industrial Engineering Technology is recognized

as a Missouri Center of Excellence in Advanced Manufacturing Technology and has programs accredited by the National Association of Industrial Technology. The Department of Agriculture offers programs in agribusiness, horticulture, animal science, plant and soil science, and other related fields. It utilizes the university demonstration farm and Horticulture Greenhouse for its programs.

### ***Schools of Graduate & University Studies***

The School of University Studies offers a core of courses designed to help students develop a collective understanding of the world and prepare for the changing conditions of personal, family, and career life. The University Studies program is designed to help students develop academic skills by studying how scholars in different academic disciplines seek answers to important questions.

The School of Graduate Studies offers 32 masters' degree programs, a specialist degrees in Educational Administration, Educational Leadership, Counseling Education, Educational Administration and participates in a cooperative doctorate in Educational Leadership

### ***Library***



Kent Library, named after the University's longstanding librarian Sadie Kent, was completed in 1939. The 166,000 square foot building houses the Center for Writing Excellence, student computer labs, the Instructional Materials Center, the Rare Book Room, the Center for Scholarship in Teaching & Learning (CSTL), the Office of Institutional Research, the Center for William Faulkner Studies, and several classrooms and study areas. The library has also been designated as an Official Government Records Depository.

Kent Library houses more than 800,000 volumes, microfilm and various collections, and provides access to nearly 2,500 periodicals through print subscriptions and online databases, and is home to Louis Daniel Brodsky - William Faulkner Collection. In addition, Kent is part of a comprehensive network of collegiate libraries (MOBIUS - Missouri Bibliographic Information User System) that provides users with access to more than 14 million volumes.

### ***International Center***

The International Center is located behind the library in the historic 3-story brown brick house on College Hill. The Center provides office and working space for the International Programs and the Intensive English Program staffs. With computers, general meeting areas, and offices



for planning and advisement, the International Center is designed to assist all students and faculty who are interested in studying abroad and the Southeast international students whose homes are outside the United States.

### ***Student Recreation Center***

The Student Recreation Center, opened in January 1987, is a 90,000-square-foot facility. All Southeast students can gain free access to the facility by showing their student ID. Memberships can also be purchased for non-students.



The Recreation Center consists of five full-size basketball and volleyball multi-purpose courts, a four lane indoor track, six racquetball courts, a climbing wall, 4300 square feet of weight room and cardio equipment, a lounge area, dance studio, multi-purpose room, locker and dressing rooms, climbing walls and equipment that can be checked out at the operation center.

A new Student Recreation Center was opened on the South Campus in fall 2003. SRC South features all new elliptical machines, treadmills, upright and recumbent bikes, weight machines, cardio theater, racquetball court, gymnasium, suspended running track and locker rooms.

The Student Recreation Center provides various aerobics and fitness classes taught by certified instructors, classes include step, yoga, and kickboxing. Over 20 intramural sports programs are offered each year that consist of competitions and tournaments held at the Recreation Center and the outdoor field complex. Many club sports also exist on campus to offer students another level of competition and skill development. Students interested in outdoor activities can rent canoes, camping, climbing, and exploring equipment from the Recreation Center's outdoor shop.

### ***Student Aquatic Center***

The Student Aquatic Center was opened in December of 2007 and has a leisure pool with up to seven foot depths, six-lane, 25-yard lap pool for competitive swimming, a 12-person spa, state-of-the-art men's and women's locker rooms, three family changing rooms, an aquatic "multi-purpose" room, offices for lifeguards and professional staff, and chemical and control systems that boast 21st century aquatic technology. The Aquatic Center also boasts two aquatic amenities that no other campus recreation aquatic center has to offer which includes a 40-foot wide, 14-foot high bouldering wall that spans the west side of the facility's leisure pool. There also exists a one-of-a-kind indoor zip line in the leisure pool area.



### ***River Campus***



On May 27, 1998, the Southeast Missouri State University Board of Regents requested and received approval from the University Foundation to purchase the buildings and grounds of St. Vincent's College and Seminary. The property had been for sale for several years, and the buildings had been unoccupied since the early 1980s. Nearly nine years later, after many feasibility studies and arduous planning, Southeast Missouri State University moved its Earl and Margie Holland School of Visual and Performing Arts to the River Campus, which includes the Departments of Theatre/Dance, Music, and Art.

Work on the Seminary, including landscaping was completed by the end of April, 2007. The move of faculty offices of the Departments of Art, Music, and Theatre/Dance was completed mid-summer, 2007. Fall classes began in the Seminary Building Aug. 20, 2007. The University Board of Regents met for the first time in the new Seminary Building May 11, 2007, to officially name various venues on the campus including The Earl and Margie Holland School of Visual and Performing Arts, the Donald C. Bedell Performance Hall, the Rosemary Berkel and Harry L. Crisp II Southeast Missouri Regional Museum, the John and Betty Glenn Convocation Center, the Wendy Kurka Rust Flexible Theatre and the Robert F. and Gertrude L. Shuck Music Recital Hall.

### ***Show Me Center***

The Show Me Center was opened in 1987 and is jointly owned by the city of Cape Girardeau and the University. This 117,000 square foot multipurpose facility seats over 7,000 people and is used for a variety of activities, such as athletic events, conventions, commencement ceremonies, stage shows, and concerts. Southeast students receive free admission to all university athletic events held in this facility, and a discounted rate for all other activities with presentation of their student ID.



Events or meetings too small to be held in the main arena are hosted in the Show Me Center's three meeting rooms or in the surrounding concourse areas. Some of these programs include banquets, press conferences, seminars and teleconferences. The Show Me Center is home to the University's championship basketball teams and the site of concerts featuring numerous entertainers.

### ***Residence Halls***



Living on campus is an integral part of the college experience. Residence halls at Southeast vary in size and costs. The University's 12 residence halls come in many different styles including community-style, suite-style, small group living and apartments. Suite-style living includes a private bath, walk-in closet and necessary furniture. In most residence halls, students on each floor have access to a television, study lounge, kitchenette, laundry room and a computer hook up.

All first year students share a double room with a roommate. This arrangement gives them the opportunity to meet other students and get to know the campus. As they move into their second year, students have many choices about where they want to live. Residence Halls at Southeast are the Towers complex which includes four residence halls- Towers North, South, East, and West; Cheney Hall; Dearmont complex; Myers Hall; Vandiver Hall; Henderson House and Group Housing. Myers Hall, located behind the University Center, is the only residence hall to offer twelve-month housing for students. The office of Residence Life is located in the Towers Complex. Dearmont Hall also houses the offices for The Department of Public Safety, University Purchasing, and University Vending Services. Located in the Towers Complex is a computer lab which students can access 24 hours a day when classes are in session.



The University also provides group housing facilities for fraternities, sororities, or other student organizations. The Group housing complex, located South of the Polytechnic building is fully air conditioned with furniture and paint selected by the student residents to create a sense of living in a “traditional” house with all of the conveniences of living on campus. Each floor in the buildings has laundry facilities with access to two lounges, a small kitchen, and a study room. The other part of group housing includes Greystone and Shivelbine, which are owned by the University. Each of these two story buildings currently house fraternities.

### ***Financial Aid & Scholarships***

Southeast offers a variety of scholarships, loans, grants and work opportunities including many federal and state programs. Before a student can receive any financial aid, it should be determined whether he/she is eligible to receive such aid. To do this, the student must complete the Free Application for Federal Student Aid (FAFSA) by submitting a paper application to the Student Financial Services office or by submitting an electronic application online.

Once the student is determined to be eligible to receive financial aid, based on his/her expected family contribution and Southeast's Cost of Attendance (COA), Student Financial Services will determine the student's eligibility for the aid. There are different types of aids available for students including, Federal Pell Grant, Federal Supplemental Educational Opportunity Grant (SEOG), Federal Subsidized and Unsubsidized Stafford Loans, Federal Parent (PLUS) Loan, Federal Perkins Loan, Federal Work-Study, Charles Gallagher Student Financial Assistance Program, and many other scholarships.

### ***Student Activities & Facilities***

Student Organizations and Leadership Programs at Southeast provide a wide variety of opportunities, services, and experiences, which assist students in the exploration and development of their leadership abilities and their preparation to become active participants in the community. In addition to services and programs provided directly by the University Center - student involvement such as the Advisor Hotwire, Emerging Leaders, Leadership Excursion, and Student Leadership Conference - students can join several other student organizations. Currently there are over 155 registered student organizations on campus, including 11 national fraternities and 8 national sororities, NCAA Division I athletics, more than 12 musical groups including the internationally recognized Golden Eagles Marching Band, theatre and numerous

year-round events and activities.

[\*Menu\*](#) [\*Next\*](#)

1 4 8

## ***THE COORDINATING BOARD OF HIGHER EDUCATION (CBHE)***

The Coordinating Board for Higher Education (CBHE) was authorized by an amendment to the Missouri Constitution in 1972 and established by statute in the Omnibus State Reorganization Act of 1974. The board, which heads the Department of Higher Education, serves without compensation. The nine members of the board, one from each congressional district, are appointed for six-year terms by the governor and confirmed by the Senate. No more than five of the nine members may be affiliated with the same political party.

The commissioner of higher education is appointed by the Coordinating Board and serves as its chief executive officer in carrying out the goals and administrative responsibilities.

### **CBHE BOARD MEMBERS**

#### ***MEMBERS***

Ms. Kathryn Swan  
Mr. Gregory Upchurch  
Mr. Duane Schreimann  
Ms. Doris Carter  
Mr. David Cole  
Mr. Lowell Kruse  
Ms. Jeanne Patterson  
Ms. Helen Washburn  
Ms. Mary Beth Luna Wolf

#### ***POSITION***

*Chairperson*  
*Vice Chairperson*  
*Secretary*  
*Member*  
*Member*  
*Member*  
*Member*  
*Member*  
*Member*

**Source:** Missouri Department of Higher Education.

### ***BOARD OF REGENTS***

The Board of Regents has primary responsibility for the governance of Southeast Missouri State University. The Missouri Revised Statutes outlines the role and responsibilities of board members of Missouri state colleges and universities.

Each member of the board must be willing to make a strong and sustained personal commitment of time, talent and energy in order to meet the challenges of this demanding role.

<b><i>MEMBER</i></b>	<b><i>POSITION</i></b>	<b><i>CITY</i></b>	<b><i>TERM EXPIRES</i></b>
Donald "Brad" Bedell	President	Sikeston, MO	Jan 1, 2013
Albert M. Spradling III	Vice-President	Cape Girardeau, MO	Jan 1, 2011
Reginald D. Dickson	Member	St. Louis, MO	Jan 1, 2011
Edward C. Matthews III	Member	Sikeston, MO	Jan 1, 2009
Gail L. Rosemarin	Member	Poplar Bluff, MO	Jan 1, 2009
James P. Limbaugh	Member	Cape Girardeau, MO	Jan 1, 2013
Leni R. Fluegge	Student Representative	Jackson, MO	

**Source:** Board of Regents, Southeast Missouri State University Website.

Updated: 07/17/2008

[Menu](#) [Previous](#) [Next](#)



## MISSION STATEMENT

**Southeast Missouri State University provides professional education grounded in the liberal arts and sciences and in practical experience.**

The University, through teaching and scholarship, challenges students to extend their intellectual capacities, interests, and creative abilities; develop their talents; and acquire a lifelong enthusiasm for learning. Students benefit from a relevant, extensive, and thorough general education; professional and liberal arts and sciences curricula; co-curricular opportunities; and real-world experiences. By emphasizing student-centered and experiential learning, the University prepares individuals to participate responsibly in a diverse and technologically-advanced world and in this and other ways contributes to the development of the social, cultural, and economic life of the region, state and nation.

### Institutional Priorities

**Southeast Missouri State University is committed to:**

- 1. Providing excellent academic programs with a liberal arts and sciences core.**
- 2. Offering access to educational programs throughout our service region.**
- 3. Serving the social, cultural, and economic life of the region, state, and nation.**
- 4. Enhancing the University community.**
- 5. Practicing wise stewardship of the University's human and financial resources and providing high-quality facilities and infrastructure that support the educational mission.**

Updated: 06/15/2007

[Menu](#) [Previous](#) [Next](#)



## COLLEGE & DEPARTMENT ADMINISTRATIVE STRUCTURE (DEAN & DEPARTMENT CHAIRPERSONS)

### DONALD L. HARRISON COLLEGE OF BUSINESS

DEPARTMENT OF ACCOUNTING & MANAGEMENT INFORMATION SYSTEMS  
DEPARTMENT OF ECONOMICS & FINANCE  
DEPARTMENT OF MANAGEMENT & MARKETING

**Dean: Gerald S. McDougall**

Joseph Wen  
Rebecca Summary  
Judy Wiles

### COLLEGE OF EDUCATION

DEPARTMENT OF LEADERSHIP & COUNSELING  
DEPARTMENT OF ELEMENTARY, EARLY, & SPECIAL ED.  
DEPARTMENT OF MIDDLE & SECONDARY ED.

**Dean: I. Sue Sheperd**

Zaidy MohdZain  
Deborah Lo  
Simin Cwick

### COLLEGE OF HEALTH & HUMAN SERVICES

DEPARTMENT OF AEROSPACE STUDIES  
DEPARTMENT OF COMMUNICATION DISORDERS  
DEPARTMENT OF CRIMINAL JUSTICE & SOCIOLOGY  
DEPARTMENT OF HEALTH, HUMAN PERF. & RECREATION  
DEPARTMENT OF HUMAN ENVIRONMENTAL STUDIES  
DEPARTMENT OF NURSING  
DEPARTMENT OF SOCIAL WORK

**Dean: Loretta P. Prater**

Major Kevin Colyott  
Sakina S. Drummond  
John Wade  
Joseph Pujol  
Paula R. King  
Marcia Hobbs  
Michael D. Parker

### COLLEGE OF LIBERAL ARTS

DEPARTMENT OF ENGLISH  
DEPARTMENT OF FOREIGN LANGUAGES & ANTHROPOLOGY  
DEPARTMENT OF HISTORY  
DEPARTMENT OF COMMUNICATION  
DEPARTMENT OF POLITICAL SCIENCE, PHILOSOPHY & RELIGION  
DEPARTMENT OF PSYCHOLOGY

**Interim Dean: Chris McGowan**

Carol Scates  
Dieter Jedan  
Joseph Werne  
Stuart Towns  
Hamner Hill  
Richard A. Burns

### SCHOOL OF VISUAL & PERFORMING ARTS

DEPARTMENT OF THEATER & DANCE  
DEPARTMENT OF ART  
DEPARTMENT OF MUSIC

**Interim Dean: Gary Miller**

Kenn Stilson  
Patricia Reagan  
Christopher Goeke

### COLLEGE OF SCIENCE & MATHEMATICS

DEPARTMENT OF BIOLOGY  
DEPARTMENT OF CHEMISTRY  
DEPARTMENT OF COMPUTER SCIENCE  
DEPARTMENT OF MATHEMATICS  
DEPARTMENT OF PHYSICS & ENGINEERING PHYSICS  
DEPARTMENT OF ENVIRONMENTAL SCIENCE

**Dean: Chris W. McGowan**

William Eddleman  
Phillip Crawford  
Donald Bagert  
Victor Gummersheimer  
David Probst  
Stephen Overmann

### SCHOOL OF POLYTECHNIC STUDIES

DEPARTMENT OF AGRICULTURE  
DEPARTMENT OF INDUSTRIAL & ENGINEERING TECHNOLOGY

**Dean: Randall Shaw**

Michael Aide  
Ragu Athinarayanan

### SCHOOL OF GRADUATE STUDIES

**Dean: Fred T. Janzow**

**SCHOOL OF UNIVERSITY STUDIES**

**Dean: David Starrett**

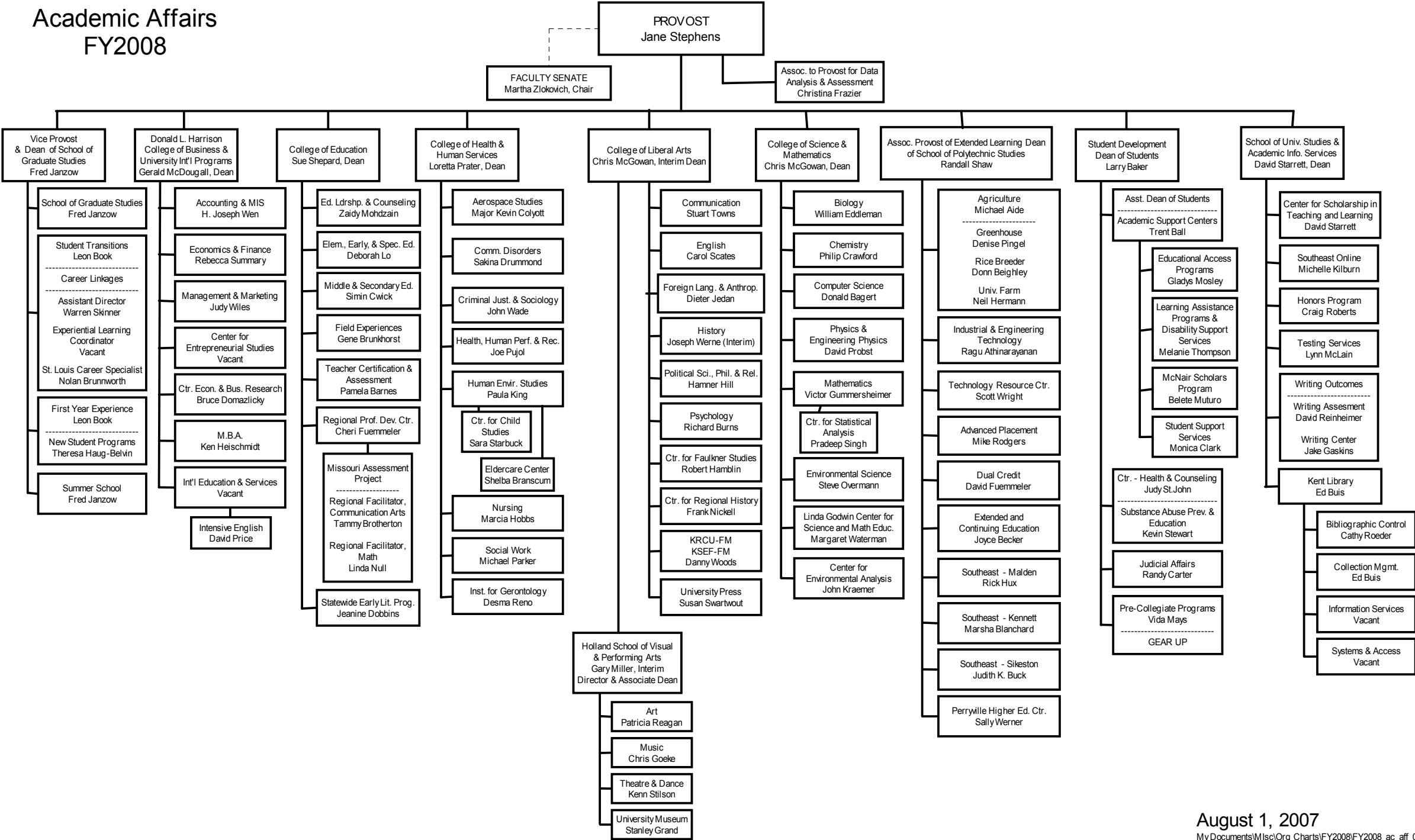
Updated 07/18/2008

[Menu](#) [Previous](#) [Organizational Charts: \*Academic Affairs\* or \*Administration\*](#)

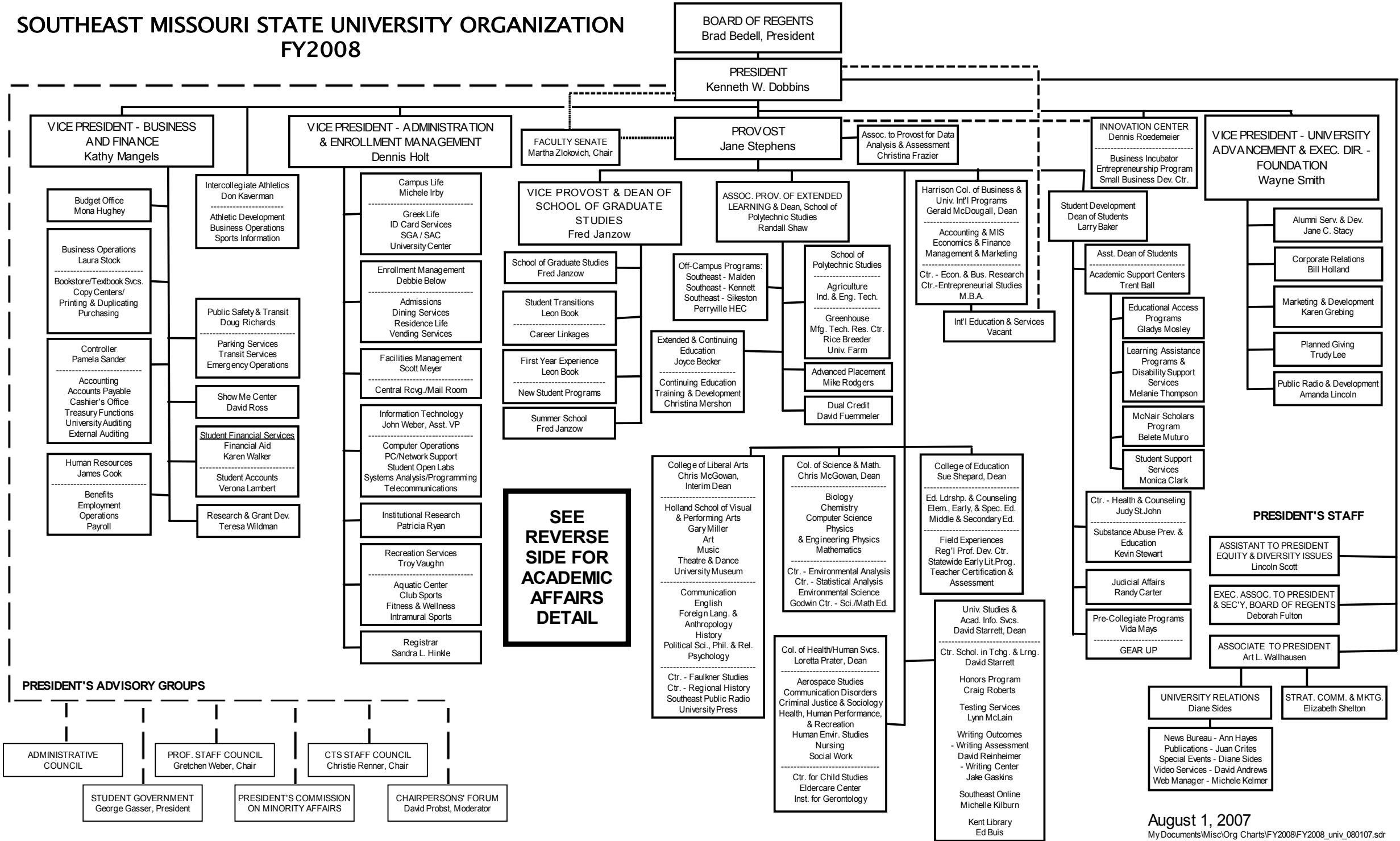
[\*Part 2: Missouri Service Area and Major Population Served\*](#)

1 6 5

Academic Affairs  
FY2008



SOUTHEAST MISSOURI STATE UNIVERSITY ORGANIZATION  
FY2008



## POPULATION OF PRIMARY SERVICE COUNTIES

Southeast Missouri State University has a special commitment to the following counties which are included in its service area. Founded in 1812, and with an area of about 579 sq. miles, Cape Girardeau County has the highest concentration of Southeast University students.

The projections shown below are based on modified census counts from the U. S. Bureau of the Census and include all persons between the ages of 15 and 19.

Service County	1995	2000	Change from '95 to '00	2005	Change from '00 to '05	2010	Change from '05 to '10	2015	Change from '10 to '15	2020	Change from '15 to '20	2025	Change from '20 to '25
Bollinger	820	856	4.20%	900	4.90%	910	1.10%	935	2.70%	976	4.39%	1009	3.38%
Butler	2899	2956	1.90%	2851	-3.70%	2966	3.90%	2872	-3.30%	2825	-1.64%	2786	-1.38%
Cape Girardeau	5879	5978	1.70%	6258	4.50%	6479	3.40%	6210	-4.30%	6011	-3.20%	6030	0.32%
Carter	476	477	0.20%	491	2.90%	506	3.00%	532	4.90%	573	7.71%	589	2.79%
Crawford	1452	1667	12.90%	1555	-7.20%	1825	14.80%	1861	1.90%	1948	4.67%	1975	1.39%
Dent	1087	1041	-4.40%	927	-12.30%	890	-4.20%	918	3.10%	940	2.40%	914	-2.77%
Dunklin	2392	2164	-10.50%	2161	-0.10%	2403	10.10%	2371	-1.30%	2259	-4.72%	2132	-5.62%
Franklin	6377	7292	12.50%	7333	0.60%	7487	2.10%	7378	-1.50%	7410	0.43%	7654	3.29%
Gasconade	972	1060	8.30%	1085	2.30%	1016	-6.80%	1026	1.00%	1065	3.80%	1117	4.88%
Iron	833	808	-3.10%	718	-12.50%	755	4.90%	799	5.50%	816	2.13%	791	-3.06%
Jefferson	13550	15581	13.00%	16313	4.50%	15637	-4.30%	15445	-1.20%	15761	2.05%	16712	6.03%
Madison	877	886	1.00%	855	-3.60%	781	-9.50%	806	3.10%	846	4.96%	860	1.65%
Mississippi	1140	1027	-11.00%	900	-14.10%	814	-10.60%	767	-6.10%	735	-4.17%	685	-6.80%
New Madrid	1688	1568	-7.70%	1409	-11.30%	1415	0.40%	1377	-2.80%	1654	20.12%	1287	-22.19%
Pemiscot	1852	1660	-11.60%	1646	-0.90%	1724	4.50%	1729	0.30%	1686	-2.49%	1616	-4.15%
Perry	1391	1325	-5.00%	1302	-1.80%	1265	-2.90%	1236	-2.30%	1269	2.67%	1279	0.79%
Reynolds	499	451	-10.60%	425	-6.10%	420	-1.20%	419	-0.20%	399	-4.77%	383	-4.01%
Ripley	1094	1093	-0.10%	1168	6.40%	1275	8.40%	1383	7.80%	1496	8.17%	1582	5.75%
St. Francois	3874	4183	7.40%	3953	-5.80%	4231	6.60%	4280	1.10%	4323	1.00%	4382	1.36%
St. Louis County	64368	68124	5.50%	68274	0.20%	68939	1.00%	62948	-9.50%	57507	-8.64%	55440	-3.59%
St. Louis City	22685	21623	-4.90%	19199	-12.60%	17319	-10.90%	13960	-24.10%	11472	-17.82%	9722	-15.25%
Ste. Genevieve	1299	1291	-0.60%	1300	0.70%	1207	-7.70%	1132	-6.60%	1139	0.62%	1174	3.07%
Scott	3153	2964	-6.40%	3011	1.60%	2996	-0.50%	2934	-2.10%	2871	-2.15%	2810	-2.12%
Stoddard	2186	2123	-3.00%	1950	-8.90%	1851	-5.30%	1798	-2.90%	1754	-2.45%	1673	-4.62%
Washington	1826	1862	1.90%	1803	-3.30%	1829	1.40%	1873	2.30%	1895	1.17%	1910	0.79%
Wayne	835	928	10.00%	891	-4.20%	969	8.00%	958	-1.10%	978	2.09%	999	2.15%
<b>TOTALS</b>	<b>145504</b>	<b>150988</b>	<b>3.60%</b>	<b>150683</b>	<b>-0.20%</b>	<b>147909</b>	<b>-1.90%</b>	<b>137947</b>	<b>-7.20%</b>	<b>130608</b>	<b>-5.32%</b>	<b>127511</b>	<b>-2.37%</b>

Sources:

(1) Missouri State Government Website at <http://www.oa.mo.gov/bp/projections.htm>. Data Retrieved August 24, 2006.

(2) Southeast Missouri State University Geographic Origin - DHE-07

Updated: 06/15/2007

[Menu](#) [Next](#)



4 1

A map of Missouri showing its 114 counties. The counties in the St. Louis metropolitan area are highlighted in yellow. These include: St. Louis City, St. Louis, St. Charles, Warren, Gasconade, Franklin, Jefferson, St. Francois, Perry, Ste. Genevieve, Dent, Crawford, Washington, Iron, Madison, Reynolds, Bollinger, Cape Girardeau, Wayne, Scott, Stoddard, Mississippi, Ripley, Butler, New Madrid, Dunklin, and Pemiscot. Other counties shown include Atchison, Nodaway, Worth, Harrison, Mercer, Putnam, Schuyler, Scotland, Clark, Holt, Andrew, De Kalb, Daviess, Grundy, Sullivan, Adair, Knox, Lewis, Buchanan, Clinton, Caldwell, Livingston, Linn, Macon, Shelby, Marion, Pike, Randolph, Monroe, Ralls, Chariton, Carroll, Ray, Clay, Platte, Jackson, Lafayette, Saline, Howard, Boone, Audrain, Lincoln, Callaway, Montgomery, Warren, St. Charles, St. Louis City, Johnson, Pettis, Cooper, Boone, Callaway, Montgomery, Warren, St. Charles, St. Louis City, Bates, Henry, Benton, Morgan, Miller, Maries, Gasconade, Franklin, Jefferson, St. Francois, Perry, Ste. Genevieve, Vernon, St. Clair, Hickory, Camden, Phelps, Crawford, Washington, Iron, Madison, Reynolds, Bollinger, Cape Girardeau, Jasper, Dade, Polk, Dallas, Laclede, Pulask, Dent, Crawford, Washington, Iron, Madison, Reynolds, Bollinger, Cape Girardeau, Newton, Lawrence, Greene, Webster, Wright, Texas, Shannon, Wayne, Scott, Stoddard, Mississippi, Ripley, Butler, New Madrid, Dunklin, and Pemiscot.

Updated: 07/18/2008

[Menu](#)   [Previous](#)

### Part 3: Programs and Costs

## ACCREDITATIONS AND AFFILIATIONS

### SOUTHEAST MISSOURI STATE UNIVERSITY IS FULLY ACCREDITED BY:

- NORTH CENTRAL ASSOCIATION OF COLLEGES AND SCHOOLS
- NATIONAL COUNCIL FOR THE ACCREDITATION OF TEACHER EDUCATION

### THE UNIVERSITY HOLDS SPECIFIC PROGRAM ACCREDITATIONS FROM:

- AACSB INTERNATIONAL - THE ASSOCIATION TO ADVANCE COLLEGIATE SCHOOLS OF BUSINESS
- AAFCS - AMERICAN ASSOCIATION FOR FAMILY AND CONSUMER SCIENCES
- ABET - ACCREDITATION BOARD FOR ENGINEERING AND TECHNOLOGY
- ACEJMC - ACCREDITING COUNCIL FOR EDUCATION IN JOURNALISM AND MASS COMMUNICATION
- ACS - AMERICAN CHEMICAL SOCIETY
- ADA - AMERICAN DIETETIC ASSOCIATION
- ASHA - AMERICAN SPEECH-LANGUAGE-HEARING ASSOCIATION
- CAAHEP - COMMISSION ON ACCREDITATION OF ALLIED HEALTH EDUCATION PROGRAMS
- CAATE - COMMISSION ON ACCREDITATION OF ATHLETIC TRAINING EDUCATION
- CACREP - COUNCIL FOR THE ACCREDITATION OF COUNSELING AND RELATED EDUCATIONAL PROGRAMS
- CADE - COMMISSION ON ACCREDITATION FOR DIETETICS EDUCATION
- CCNE - COMMISSION ON COLLEGIATE NURSING EDUCATION
- CHRIE - COUNCIL ON HOTEL, RESTAURANT, AND INSTITUTIONAL EDUCATION
- CSWE - COUNCIL ON SOCIAL WORK EDUCATION
- NAIT - NATIONAL ASSOCIATION FOR INDUSTRIAL TECHNOLOGY
- NASM - NATIONAL ASSOCIATION OF SCHOOLS AND COLLEGES OF MUSIC
- NAEYC - NATIONAL ASSOCIATION FOR THE EDUCATION OF THE YOUNG CHILD
- NCATE - NATIONAL COUNCIL FOR THE ACCREDITATION OF TEACHER EDUCATION
- NRPA/AAPAR - NATIONAL RECREATION AND PARK ASSOCIATION/AMERICAN ASSOCIATION FOR PHYSICAL ACTIVITY AND RECREATION

### THE UNIVERSITY IS A MEMBER OF:

- AMERICAN ALUMNI COUNCIL
- AMERICAN ASSOCIATION OF COLLEGES FOR TEACHER EDUCATION
- AMERICAN ASSOCIATION OF COLLEGIATE REGISTRARS AND ADMISSIONS OFFICERS
- AMERICAN ASSOCIATION OF UNIVERSITY WOMEN
- AMERICAN COLLEGE HEALTH ASSOCIATION
- COUNCIL OF GRADUATE SCHOOLS IN THE UNITED STATES
- NATIONAL ASSOCIATION OF CAMPUS ACTIVITIES
- NATIONAL ASSOCIATION OF COLLEGE ADMISSIONS COUNSELORS
- NATIONAL ASSOCIATION OF STUDENT PERSONNEL ADMINISTRATORS
- NATIONAL COLLEGIATE ATHLETIC ASSOCIATION
- NATIONAL COLLEGIATE HONORS COUNCIL

Updated 01/30/2008

[Menu](#) [Next](#)

**ACADEMIC PROGRAMS OFFERED*****SPECIALIST DEGREES******SPECIALIST IN EDUCATION***

Counseling Education	Educational Leadership Development
Educational Administration	

***MASTER'S DEGREES******MASTER OF ARTS***

Communication Disorders	Human Environmental Studies
Community Counseling	Teaching English to Speakers of Other Languages (TESOL)
Elementary Education	Secondary Education:
English	Educational Studies
Exceptional Child Education	Educational Technology
History	School Administration
Higher Education Administration	School Counseling

***MASTER OF BUSINESS ADMINISTRATION***

Accounting	Health Administration
Environmental Management	Industrial Management
Financial Management	International Business
General Management	

***MASTER OF MUSIC EDUCATION******MASTER OF NATURAL SCIENCE***

Biology	Mathematics
Chemistry	Science Education

***MASTER OF PUBLIC ADMINISTRATION***

Community Wellness & Leisure Services	Public Administration
---------------------------------------	-----------------------

***MASTER OF SCIENCE***

Criminal Justice	Nutrition and Exercise Science
Industrial Management	

***MASTER OF SCIENCE IN NURSING***

**BACHELOR'S DEGREES****BACHELOR OF ARTS**

Anthropology	German
Art	History
Chemistry	Mass Communication
Chemistry	Journalism
DNA Analysis	Music
Forensic Science	Philosophy
Communication Studies	Political Science
English	Spanish
Literature	Theatre & Dance
Writing	
French	

**BACHELOR OF FINE ARTS**

Art	Performing Arts
	Acting/Directing
	Dance
	Design/Technology
	Musical Theatre

**BACHELOR OF SCIENCE IN FAMILY AND CONSUMER EDUCATION****BACHELOR OF GENERAL STUDIES****BACHELOR OF MUSIC**

Music
Composition
Instrumental
Performance
Vocal Performance

**BACHELOR OF MUSIC EDUCATION**

Music Education	
Instrumental	Vocal

**BACHELOR OF SCIENCE**

Agribusiness	Health Management
Agriculture Industry	Exercise Science
Animal Science	Health Promotion
Horticulture	Historic Preservation
Plant & Soil Science	Hospitality Management
Athletic Training	Human Environmental Studies
Biology	Child Development
Biomedical Sciences	Dietetics
General Biology	Family Studies
Microbiology, Cell &	
Molecular Biology	Fashion Merchandising



Organismal, Ecological, & Evolutionary Biology	Housing & Interior Design
Wildlife/Conservation	Industrial Technology
Chemistry	Construction Management and Design
ACS Certified Chemistry	Facilities Management
Chemistry	Industrial Management
Biochemistry	Technical Graphics
Business	Technology (AAS transfers)
Forensic Chemistry	Telecomm & Computer Networking
Communication Disorders	Interdisciplinary Studies
Computer Information Systems	Mass Communication
Computer Science	Advertising
Corporate Communication	Public Relations
Criminal Justice	Radio
Corrections	Television & Film
Law	
Enforcement	Mathematics
Security Management	Pure Mathematics
Economics	Applied Mathematics & Statistics
Engineering Physics	Medical Technology
Applied Physics and Engineering	Physics
Computer Application in Physics & Engineering	Political Science
Engineering Technology	Psychology
Electrical and Control Mechanical & Manufacturing Systems	Recreation
Environmental Science	Social Work
	Sport Management

***BACHELOR OF SCIENCE IN BUSINESS ADMINISTRATION***

Accounting	Management
Administrative Systems Management	Human Resource Management
Economics	Organizational Leadership
Business Economics	Marketing
Financial Economics	Integrated Marketing Communications
Finance	Marketing Management
International Business	Organizational Administration
Management Information Systems	Business Administration Core

***BACHELOR OF SCIENCE IN EDUCATION***

Early Childhood Education	Industrial Education
Elementary Education	Mathematics Education
Exceptional Child Education	Middle School Education (5-9)
Secondary Education	Physical Education (K-12)
Art Education (K-12)	Physics Education
Biology Education	Social Studies
Business and Marketing Education	Spanish Education (K-12)
Chemistry Education	Speech and Theatre Education
English Education	Unified Science-Biology
French Education (K-12)	Unified Science-Chemistry
German Education (K- 12)	Unified Science-Physics

*BACHELOR OF SCIENCE IN NURSING****PRE-PROFESSIONAL PROGRAMS***

Pre-Architecture	Pre-Optometry
Pre-Chiropractic	Pre-Pharmacy
Pre-Dentistry	Pre-Physical Therapy
Pre-Engineering	Pre-Veterinary Medicine
Pre-Law	Pre-Vocational Agriculture Education
Pre-Medicine	

***ASSOCIATE DEGREES****ASSOCIATE OF APPLIED SCIENCE*

Computer Technology  
Automated  
Manufacturing  
Microcomputer Systems  
Technical Computer Graphics

*ASSOCIATE OF ARTS*

Child Care & Guidance

***TWO-YEAR CERTIFICATE***

Administrative Assistant	Electronics
Design Drafting	Graphic Technology

**Source:** Southeast Missouri State University Website and  
Undergraduate Bulletin 2007-2008.

**MINORS**

Departments may require a minor for majors under the Bachelor of Arts, Bachelor of Science, & Bachelor of Science in Education (Secondary). The areas in which minors are offered are:

Accounting	Human Resource Management
Administrative Systems Mgmt	Industrial Management
Aerospace Studies	Information Systems
Agriculture	Interior Design
Anthropology	International Business
Archaeology	International Studies
Architectural Design	Literature
Art/ Art History	Management
Biology	Marketing:
Botany	Marketing Management
Business Administration	Integrated Marketing Communications
Chemistry	Retail Management
Child Life Services	Sales Management
Child Studies	Mass Communication
Coaching	Mathematics
Communication Disorders	Microbiology
Communication for Legal Professionals	Music
Communication Studies	Nutrition
Computer Networking	Outdoor Adventure Leadership
Computer Science	Philosophy
Criminal Justice	Physics
Criminology	Political Science
Dance	Psychology:
Economics	Applied
Electronics Technology	Developmental
Engineering Physics	General
Entrepreneurship/Small Business Mgmt	Psychological Services
Environmental Science	Public Administration
Environmental Soil Science	Recreation
Environmental Studies	Religion
Exercise Science	Small Press Publishing
Family Economics & Management	Social Rehabilitation & Treatment
Family Studies	Social Work
Fashion Merchandising	Sociology
Finance	Soils
French	Spanish
Geography	Sport Management
Geoscience	Technical Theatre
German	TESOL
Gerontology	Theatre:
Graphic Communications & Technology	Acting/Directing
Health Promotion	General
Historic Preservation	Women's Studies
History	Writing
Horticulture	Zoology
Hospitality Management	

**Source:** Southeast Missouri State University Website and Undergraduate Bulletin 2007-2008.

Updated: 07/17/2008

[Menu](#) [Previous](#) [Next](#)

## First-time, Full-time, Degree-seeking Freshmen

**Total**

Fall	Head Count	Average ACT	Retention Rate			Cumulative Graduation/Continuation Rates				
			%Continued to_2nd_Yr	%Continued to_3rd_Yr	%Graduated in_4_Yrs	%Continued to_5th_Yr	%Graduated in_5_Yrs	%Continued to_6th_Yr	%Graduated in_6_Yrs	%Continued to_7th_Yr
2000	1436	22.6	70.4%	58.1%	26.3%	27.7%	45.4%	8.3%	49.6%	4.0%
2001	1505	22.3	72.9%	64.1%	24.0%	33.2%	46.1%	9.6%	51.1%	4.5%
2002	1458	22.4	70.4%	59.6%	24.8%	30.3%	45.0%	8.4%		
2003	1411	22.4	70.2%	59.5%	23.7%	28.2%				
2004	1392	22.4	70.1%	60.1%						
2005	1544	22.2	69.2%	58.5%						
2006	1388	22.4	70.5%							

**Subgroup: Female**

Fall	Head Count	Average ACT	Retention Rate			Cumulative Graduation/Continuation Rates				
			%Continued to_2nd_Yr	%Continued to_3rd_Yr	%Graduated in_4_Yrs	%Continued to_5th_Yr	%Graduated in_5_Yrs	%Continued to_6th_Yr	%Graduated in_6_Yrs	%Continued to_7th_Yr
2000	821	22.6	72.6%	61.2%	33.2%	24.9%	50.9%	6.5%	53.9%	3.2%
2001	909	22.1	72.9%	63.9%	28.8%	29.7%	50.3%	7.8%	53.9%	4.6%
2002	858	22.4	70.7%	62.5%	30.0%	27.4%	50.7%	5.6%		
2003	825	22.4	72.8%	62.9%	28.9%	26.9%				
2004	826	22.5	71.5%	61.3%						
2005	921	22.2	71.4%	61.0%						
2006	857	22.4	71.3%							

**Subgroup: Male**

Fall	Head Count	Average ACT	Retention Rate			Cumulative Graduation/Continuation Rates				
			%Continued to_2nd_Yr	%Continued to_3rd_Yr	%Graduated in_4_Yrs	%Continued to_5th_Yr	%Graduated in_5_Yrs	%Continued to_6th_Yr	%Graduated in_6_Yrs	%Continued to_7th_Yr
2000	615	22.7	67.4%	53.8%	17.1%	31.5%	38.0%	10.8%	43.9%	5.1%
2001	596	22.7	72.8%	64.4%	16.6%	38.7%	39.7%	12.1%	45.4%	4.1%
2002	600	22.4	69.8%	55.6%	17.4%	34.6%	36.9%	12.4%		
2003	586	22.4	66.6%	54.8%	16.4%	30.0%				
2004	566	22.4	68.0%	58.3%						
2005	623	22.3	66.0%	54.8%						
2006	531	22.5	69.3%							

Source: 2007-08 CSRDE Retention Survey.

Updated: 03/07/2008

[Menu](#) [Previous](#) [Next](#)

**LIBRARY COLLECTIONS**

Statistics collected by Martha McBride, M.A., Library Associate, Kent Library

**LIBRARY & INFORMATION SERVICES HOLDINGS**

	2003	2004	2005	2006	2007
NUMBER OF VOLUMES:					
Books, Serials, Backfiles, and Cataloged Government Documents	420,371	427,233	430,314	429,108	425,860
CURRENT SERIAL SUBSCRIPTIONS:					
Periodicals, newspapers, and gov docs-Paper and Electronic	24,697	27,819	29,407	32,455	38,839
Microforms- UNITS	1,292,981	1,285,232	1,283,028	1,287,678	1,293,965
Audiovisual Materials- UNITS	12,690	12,843	13,467	14,279	15,102

Note: Electronic, Government Documents Serials and Newspapers not included prior to 2003

**MANUSCRIPTS AND ARCHIVES (Current Collection)**

	FY07
Board of Regents Minutes (1994-2007)- No. of folders	133
University Archives*- No. of boxes	256
MO State Teachers' Association, SEMO Chapter- No. of boxes	33
Houck Papers (Louise Houck Collection)- No. of boxes	124
Glenn House Collection- No. of boxes	50
Brodsky Faulkner Collection (letters & manuscript pages)	5,000
Scrap books (Capaha Arrow publications & bound books)	149
Photographic images	85,000
Regional History Collection	372
Maps	95
Books	3,879
Sound and video recordings	100
Vertical files	1,363
Microfilms	325

NOTE: Each box consists of approximately 25-30 folders.

\* University archives include faculty senate minutes, President subject files, Alumni services, College records, President's office, Sports, Men's/Women's athletics, Press releases, Campus newswire, Biennial report of the Board of Regents.

Data provided September 24, 2007

Updated: 10/05/2007

[Menu](#) [Previous](#) [Next](#)



# OPERATING BUDGET

## FY 03 BUDGET

E&G Expenditures (net)	\$ 75,139,969	
+ Estimated Earnings	8,187,838	
Total Revenue Budget (E & G)		\$ 83,327,807
<i>Auxiliaries:</i>		
Student Recreation Center	\$ 1,303,032	
Police Academy	193,500	
Residence Life	14,133,862	
Vending Services	206,300	
KRCU-FM	447,847	
Academic Refurbishment	238,169	
Southeast Bookstore	1,082,000	
Textbook Services	1,653,617	
University Center	870,019	
Telecommunications	1,710,092	
Cottonwood Treatment Center	387,000	
Show Me Center	1,233,044	
Div of Youth Services	51,279	
Parking & Transportation	939,000	
Business Operations	905,651	\$ 25,354,412
Total Current Unrestricted		\$ 108,682,219
FY 01 Restricted Expenditures		\$ 15,140,160
Total Current Restricted and Unrestricted		\$ 123,822,379

**FY 04 BUDGET**

E&G Expenditures (net)	\$ 79,225,518	
+ Estimated Earnings	<u>8,358,698</u>	
Total Revenue Budget (E & G)		\$ 87,584,216
<i>Auxiliaries:</i>		
Student Recreation Center	\$ 1,374,769	
Police Academy	193,500	
Residence Life	13,845,329	
Vending Services	236,500	
KRCU-FM	453,510	
Academic Refurbishment	249,150	
Southeast Bookstore	1,678,000	
Textbook Services	1,312,638	
University Center	859,448	
Telecommunications	1,491,600	
Cottonwood Treatment Center	387,000	
Show Me Center	1,259,948	
Supplies Resale	56,731	
Div of Youth Services	40,277	
Parking & Transportation	1,057,689	
Business Operations	<u>605,000</u>	\$ 25,101,089
Total Current Unrestricted		\$ 112,685,305
FY 01 Restricted Expenditures		<u>\$ 15,861,094</u>
Total Current Restricted and Unrestricted		<u><u>\$ 128,546,399</u></u>

**FY 05 BUDGET**

E&G Expenditures (net)	\$ 81,677,473	
+ Estimated Earnings	<u>9,034,430</u>	
Total Revenue Budget (E & G)		\$ 90,711,903
<i>Auxiliaries:</i>		
Student Recreation Center	\$ 1,610,100	
Police Academy	206,300	
Residence Life	14,056,027	
Copier/ Auditrons	116,000	
Vending Services	236,500	
KRCU-FM	467,147	
Academic Refurbishment	268,654	
Southeast Bookstore	1,720,000	
Textbook Services	1,316,500	
University Center	838,485	
Telecommunications	1,326,440	
Cottonwood Treatment Center	387,000	
Show Me Center	1,293,887	
Supplies Resale	59,813	
Div of Youth Services	40,277	
Parking & Transportation	1,025,000	
Business Operations	<u>530,000</u>	\$ 25,498,130
Total Current Unrestricted		\$ 116,210,033
FY 01 Restricted Expenditures		<u>\$ 15,861,094</u>
Total Current Restricted and Unrestricted		<u><u>\$ 132,071,127</u></u>

**FY 06 BUDGET**

E&G Expenditures (net)	\$83,304,564	
+ Estimated Earnings	\$ 10,303,556	
Total Revenue Budget (E & G)		\$ 93,608,120
Auxiliaries:		
Student Recreation Center	\$ 1,701,191	
Aquatic Center	151,300	
Police Academy	190,000	
Residence Life	14,305,491	
KRCU-FM	393,987	
Academic Refurbishment	278,098	
Southeast Bookstore	1,790,000	
Textbook Services	1,388,500	
University Center	935,445	
Telecommunications	1,265,200	
Cottonwood Treatment Center	387,000	
Show Me Center	1,314,088	
Div of Youth Services	14,768	
Supplies Resale	60,861	
Parking & Transportation	1,049,510	
Business Operations	\$ 544,000	\$ 25,769,439
Total Current Unrestricted		\$119,377,559
FY 04 Restricted Expenditures		\$ 18,066,614
Total Current Restricted and Unrestricted		\$137,444,173

### FY 07 BUDGET

E&G Expenditures (net)	\$86,611,859	
+ Estimated Earnings	\$ 10,799,406	
Total Revenue Budget (E & G)		\$ 97,411,265
Auxiliaries:		
Student Recreation Center	\$ 1,568,208	
Aquatic Center	330,800	
Police Academy	220,000	
Residence Life	14,649,833	
KRCU-FM	420,431	
Academic Refurbishment	287,969	
Southeast Bookstore	1,845,000	
Textbook Services	1,405,500	
University Center	1,218,633	
Telecommunications	1,173,200	
Cottonwood Treatment Center	387,000	
Show Me Center	1,348,186	
Div of Youth Services	14,768	
Supplies Resale	63,056	
Parking & Transportation	1,065,000	
Business Operations	\$ 573,000	\$ 26,570,584
Total Current Unrestricted		\$123,981,849
FY 05 Restricted Expenditures		\$ 22,443,989
Total Current Restricted and Unrestricted		\$146,425,838

Updated: 10/05/2007

[Menu](#) [Previous](#) [Next](#)

2 3 8

## COMPREHENSIVE FEE SCHEDULE FY2007

	Undergraduate		Graduate	
	Resident	Nonresident	Resident	Nonresident
<b>Non-designated and unrestricted fees charged per semester</b>				
1. Nondesignated and unrestricted per credit hour charge	\$184.80	\$339.30	\$213.30	\$393.30
2. Number of credit hours for full-time status	12	12	9	9
3. Designated fees, <b>per semester</b> , charged to an undergraduate student taking 15 credit hours and a graduate student taking 12 credit hours	\$355.50	\$355.50	\$284.40	\$284.40
4. Total amount of non-designated incidental and designated required fees a typical full-time undergraduate student taking 15 semester credit hours and a full-time graduate student taking 12 semester credit hours will be charged <b>per year</b>	\$6,255.00	\$10,890.00	\$5,688.00	\$10,008.00

On-Campus Fees per academic year	\$
Room & Board	5935
Room Only	3673
Board Only	2262

**Note:**

Room and Board rates are based on the rate for Towers South and the maximum meal plan.

Updated: 07/18/2008

[Menu](#)   [Previous](#)

[Part 4: Enrollment](#)

## ENROLLMENT HIGHLIGHTS

- Fall 2007 *enrollment headcount* increased by 188 from the previous year. This was an increase of 1.8% from fall 2007.
- *Undergraduate enrollment* increased by 2.6% from the previous year. Over the past 10 years, undergraduate enrollment has risen with the exception of one year, 2004, when it dropped by 0.27%.
- *Graduate enrollment* decreased by 2.9% from last year.
- *Female enrollment* has been consistently greater than male enrollment. In fall 2007, the total enrollment consisted of 63% females and 37% males.
- *International student enrollment* has been up and down over the past 10 years creating a 10 year average of 211 international students. There was a 5.6% decrease of international students from fall 2006.
- 203 students from *40 countries* were represented in the student body of fall 2007. Japan had the highest representation with 69 students, followed by China with 44 students and then Republic of Korea with 9 students.
- Of the 10,665 students in fall 2007, 85.6% were from within the state of Missouri, 10.3% were from other states, and 1.9% were from foreign countries. The geographical origin of the remaining 1% of students was not known.

[Menu](#)   [Next](#)

1 4 5

**TOTAL ENROLLMENT BY GENDER  
FALL 1998 - 2007 (UNDUPLICATED COUNT)**

**Total**

Year	Female		Male		Total	
	N	% increase (decrease)	N	% increase (decrease)	N	% increase (decrease)
1998	5231		3263		8494	
1999	5513	5.39	3356	2.85	8869	4.41
2000	5407	(1.92)	3544	5.60	8951	0.92
2001	5792	7.12	3560	0.45	9352	4.48
2002	5825	0.57	3709	4.19	9534	1.95
2003	5734	(1.56)	3836	3.42	9570	0.38
2004	5872	2.41	3746	(2.35)	9618	0.50
2005	6330	7.80	3962	5.77	10292	7.01
2006	6620	4.58	3857	(2.65)	10477	1.80
2007	6690	1.06	3975	3.06	10665.00	1.79

**Undergraduates**

Year	Female		Male		Total	
	N	% increase (decrease)	N	% increase (decrease)	N	% increase (decrease)
1998	4442		3007		7449	
1999	4453	0.25	3027	0.67	7480	0.42
2000	4530	1.73	3230	6.71	7760	3.74
2001	4864	7.37	3234	0.12	8098	4.36
2002	4912	0.99	3439	6.34	8351	3.12
2003	4912	0.00	3571	3.84	8483	1.58
2004	4988	1.55	3472	(2.77)	8460	(0.27)
2005	5306	6.38	3662	5.47	8968	6.00
2006	5424	2.22	3553	(2.98)	8977	0.10
2007	5542	2.18	3667	3.21	9209	2.58

**Graduates**

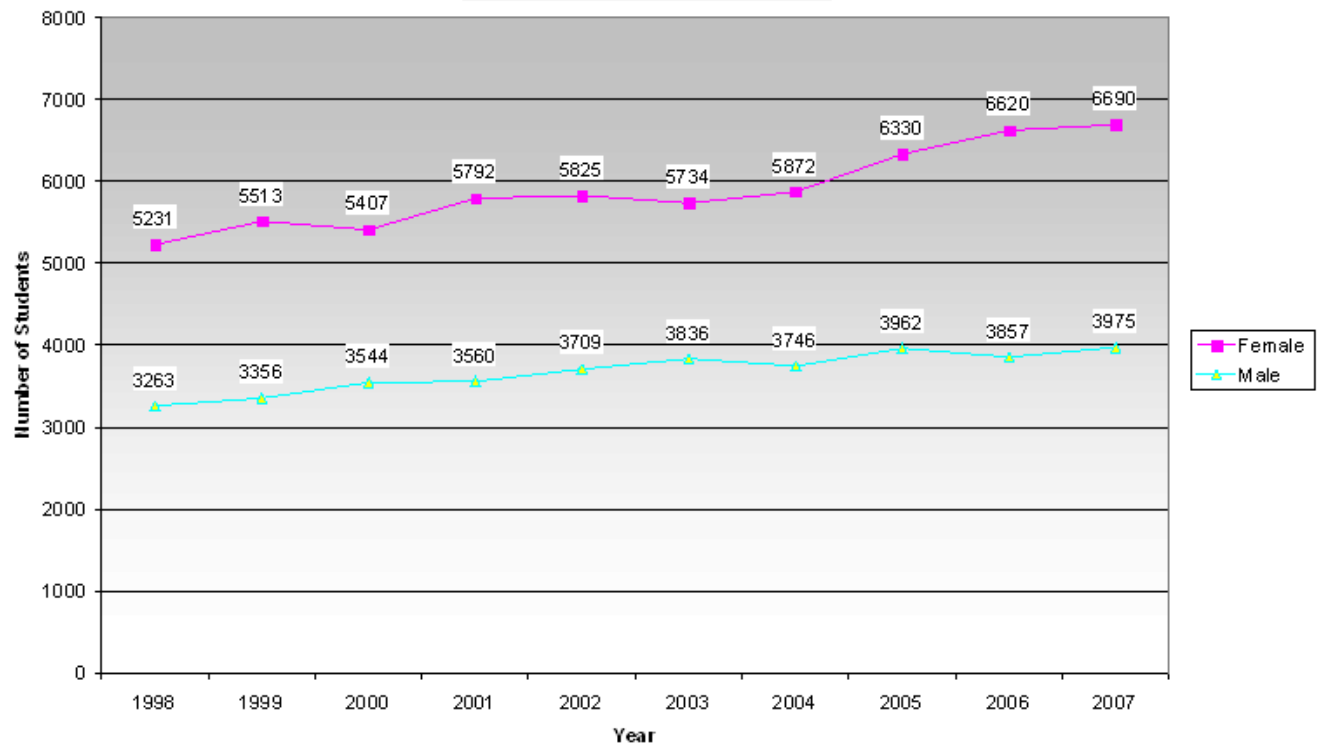
Year	Female		Male		Total	
	N	% increase (decrease)	N	% increase (decrease)	N	% increase (decrease)
1998	789		256		1045	
1999	1060	34.35	329	28.52	1389	32.92
2000	877	(17.26)	314	(4.56)	1191	(14.25)
2001	928	5.82	326	3.82	1254	5.29
2002	913	(1.62)	270	(17.18)	1183	(5.66)
2003	822	(9.97)	265	(1.85)	1087	(8.11)
2004	884	7.54	274	3.40	1158	6.53
2005	1024	15.84	300	9.49	1324	14.34
2006	1196	16.80	304	1.33	1500	13.29
2007	1148	(4.01)	308	1.32	1456	(2.93)

**Note: Data for this table was taken on the Fall Census date.**

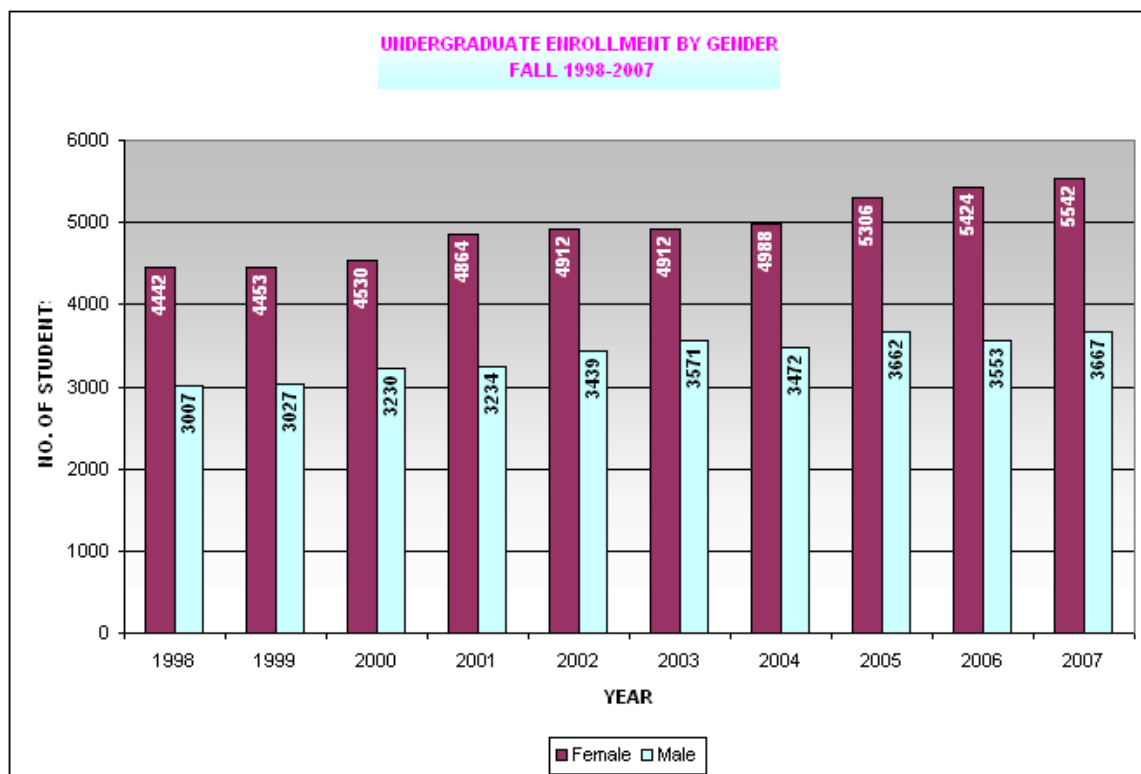
**Unduplicated Count:** Each student is counted only once irrespective of the number of majors he/she is enrolled in.

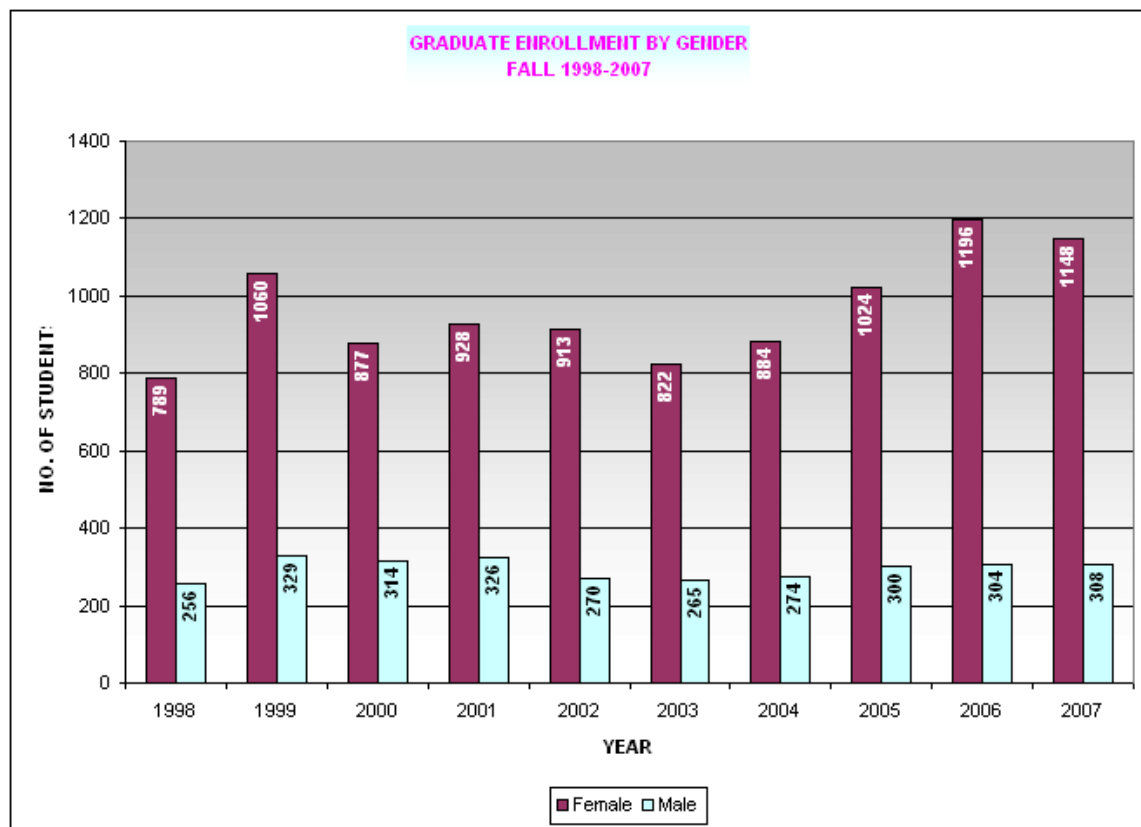


**Total Enrollment by Gender  
Fall 1998-2007**



**UNDERGRADUATE ENROLLMENT BY GENDER  
FALL 1998-2007**





Updated: 07/17/2008

[Menu](#) [Previous](#) [Next](#)

1 4 6

## ENROLLMENT BY FULL-TIME, PART-TIME STATUS UNDUPLICATED COUNT (FALL 1998-2007)

### ENROLLMENT BY FULL-TIME, PART-TIME STATUS UNDUPLICATED COUNT (FALL 1998-2007)

Year	Undergraduate						Graduate					
	Full-time		Part-time		Total		Full-time		Part-time		Total	
	N	%	N	%	N	%	N	%	N	%	N	%
1998	5689	76.4	1760	23.6	7449	87.7	126	12.1	919	87.9	1045	12.3
1999	5747	76.8	1733	23.2	7480	84.3	201	14.5	1188	85.5	1389	15.7
2000	5911	76.2	1849	23.8	7760	86.7	220	18.5	971	81.5	1191	13.3
2001	6128	75.7	1970	24.3	8098	86.6	221	17.6	1033	82.4	1254	13.4
2002	6431	77.0	1920	23.0	8351	87.6	192	16.2	991	83.8	1183	12.4
2003	6604	77.8	1879	22.2	8483	88.6	186	17.1	901	82.9	1087	11.4
2004	6466	76.4	1994	23.6	8460	88.0	181	15.6	977	84.4	1158	12.0
2005	6798	75.8	2170	24.2	8968	87.1	205	15.5	1119	84.5	1324	12.9
2006	6721	74.9	2256	25.1	8977	85.7	231	15.4	1269	84.6	1500	14.3
2007	6892	74.8	2317	25.2	9209	86.3	195	13.4	1261	86.6	1456	13.7

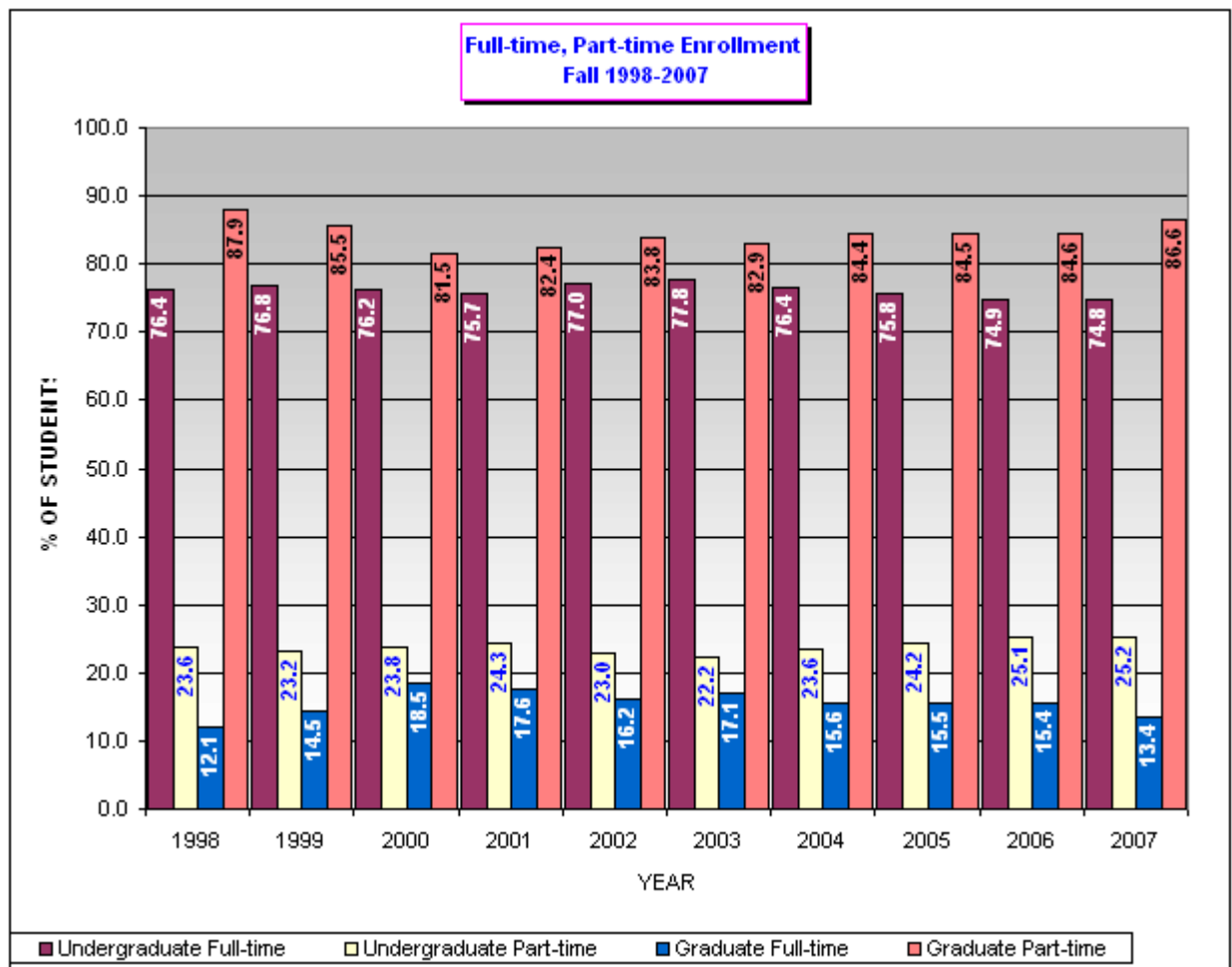
**NOTE:**

Data for this table was taken on the Fall Census date.

**Undergraduates:** Full-time students are those taking 12 or more credit hours during the semester, and part-time students are those who are taking less than 12 credit hours during the semester.

**Graduates:** Full-time students are those taking 9 or more credit hours during the semester, and part-time students are those who are taking less than 9 credit hours during the semester.

**Unduplicated Count:** Each student is counted only once irrespective of the number of majors he/she is enrolled in.



Updated: 07/17/2008

[Menu](#) [Previous](#) [Next](#)

1 2 7

**CREDIT HOURS AND FTE  
UNDULICATED COUNT (1998 - 2007)**

CREDIT HOURS AND FTE  
UNDULICATED COUNT (1998-2007)

YEAR	HEAD COUNT			CREDIT HOURS			FTE			AVERAGE LOAD			HEADCOUNT TO FTE RATIO	
	UG	GR	TOTAL	UG	GR	TOTAL	UG	GR	TOTAL	UG	GR	TOTAL	UG	GR
1998	7449	1045	8494	91538	4844	96382	6102	404	6506	12.3	4.6	11.3	1.22	2.59
1999	7480	1389	8869	91850	6410	98260	6123	534	6657	12.3	4.6	11.1	1.22	2.60
2000	7760	1191	8951	94170	5835	100005	6278	486	6764	12.1	4.9	11.2	1.24	2.45
2001	8098	1254	9352	98174	5971	104145	6545	498	7043	12.1	4.8	11.1	1.24	2.52
2002	8351	1183	9534	102755	5746	108501	6850	479	7329	12.3	4.9	11.4	1.22	2.47
2003	8483	1087	9570	104626	5478	110104	6975	457	7432	12.3	5.0	11.5	1.22	2.38
2004	8460	1158	9618	103907	5589	109496	6927	466	7393	12.3	4.8	11.4	1.22	2.48
2005	8968	1324	10292	109232	6153	115385	7282	513	7795	12.2	4.6	11.2	1.23	2.58
2006	8977	1500	10477	108491	7077	115568	7233	590	7823	12.1	4.7	11.0	1.24	2.54
2007	9209	1456	10665	111485	6736	118221	7432	561	7994	12.1	4.6	11.1	1.24	2.60

Source: Fall Census data

**Note:**

**1. Under the semester system, the factors for calculating the number of student FTE's generated are as follows:**

15 undergraduate student credit hours equal 1 FTE; 12 graduate student credit hours equal 1 FTE.

**2. Average Student Load=** UG/GR Credit Hours/Head Count.

**3. Unduplicated Count:** Each student is counted only once irrespective of the number of majors he/she is enrolled in.

Updated: 07/17/2008

[Menu](#)   [Previous](#)   [Next](#)

**ENROLLMENT BY CLASS LEVEL  
UNDUPLICATED COUNT (FALL 1998-2007)**

Class Level	1998		1999		2000		2001		2002		2003		2004		2005		2006		2007	
	N	%	N	%	N	%	N	%	N	%	N	%	N	%	N	%	N	%	N	%
High School	385	5.2	320	4.3	425	5.5	483	6.0	503	6.0	535	6.3	558	6.6	584	6.5	600	6.7	612	6.6
Beginning Freshman	1362	18.3	1509	20.2	1542	19.9	1606	19.8	1566	18.8	1495	17.6	1500	17.7	1679	18.7	1518	16.9	1805	19.6
Freshman	706	9.5	750	10.0	831	10.7	798	9.9	848	10.2	793	9.3	820	9.7	921	10.3	911	10.1	823	8.9
Sophomore	1386	18.6	1402	18.7	1546	19.9	1598	19.7	1599	19.1	1611	19.0	1539	18.2	1660	18.5	1764	19.7	1638	17.8
Junior	1511	20.3	1394	18.6	1432	18.5	1481	18.3	1643	19.7	1660	19.6	1601	18.9	1652	18.4	1660	18.5	1753	19.0
Senior	1857	24.9	1821	24.3	1770	22.8	1828	22.6	1915	22.9	2079	24.5	2136	25.2	2211	24.7	2290	25.5	2241	24.3
Dual Enrolled	10	0.1	8	0.1	18	0.2	16	0.2	4	0.0	8	0.1	7	0.1	7	0.1	0	0.0	0	0.0
Second Degree	181	2.4	198	2.6	149	1.9	169	2.1	197	2.4	190	2.2	201	2.4	199	2.2	137	1.5	225	2.4
Special	29	0.4	60	0.8	34	0.4	109	1.3	58	0.7	86	1.0	75	0.9	25	0.3	61	0.7	83	0.9
Visiting	22	0.3	18	0.2	13	0.2	10	0.1	18	0.2	26	0.3	23	0.3	30	0.3	36	0.4	29	0.3
<b>Total Undergraduates</b>	<b>7449</b>	<b>100.0</b>	<b>7480</b>	<b>100.0</b>	<b>7760</b>	<b>100.0</b>	<b>8098</b>	<b>100.0</b>	<b>8351</b>	<b>100.0</b>	<b>8483</b>	<b>100.0</b>	<b>8460</b>	<b>100.0</b>	<b>8968</b>	<b>100.0</b>	<b>8977</b>	<b>100.0</b>	<b>9209</b>	<b>100.0</b>
Graduate Unclassified	342	32.7	565	40.7	368	30.9	404	32.2	341	28.8	297	27.3	449	38.8	586	44.3	649	43.3	637	43.8
Masters	619	59.2	708	51.0	700	58.8	743	59.3	750	63.4	706	64.9	616	53.2	650	49.1	725	48.3	730	50.1
Specialist	77	7.4	102	7.3	110	9.2	96	7.7	80	6.8	72	6.6	83	7.2	77	5.8	115	7.7	76	5.2
Doctoral	7	0.7	14	1.0	13	1.1	11	0.9	12	1.0	12	1.1	10	0.9	11	0.8	11	0.7	13	0.9
<b>Total Graduates</b>	<b>1045</b>	<b>100.0</b>	<b>1389</b>	<b>100.0</b>	<b>1191</b>	<b>100.0</b>	<b>1254</b>	<b>100.0</b>	<b>1183</b>	<b>100.0</b>	<b>1087</b>	<b>100.0</b>	<b>1158</b>	<b>100.0</b>	<b>1324</b>	<b>100</b>	<b>1500</b>	<b>100</b>	<b>1456</b>	<b>100</b>
University Total	8494		8869		8951		9352		9534		9570		9618		10292		10477		10665	

**Note: Data for this table was taken on the Fall Census date.**

**Unduplicated Count: Each student is counted only once irrespective of the number of majors he/she is enrolled in.**

**Definitions:**

High School: A student who is in his/her senior year of high school and has enrolled in classes at the university.

Beginning Freshman: A student who is in the first semester of college.

Freshman: A student who is in the first year of college and has between 0 to 29 credit hours.

Sophomore: A student who has completed between 30 to 59 credit hours.

Junior: A student who has completed between 60 to 89 credit hours.

Senior: A student who has completed 90 credit hours.

Dual Enrolled: Students who have not completed their undergraduate degree, but who are permitted to enroll in graduate courses.

Second Degree: Students who already have a bachelor's degree, and are working towards a second undergraduate degree.

Special: Applicants who do not intend to pursue a degree or other award given by the University.

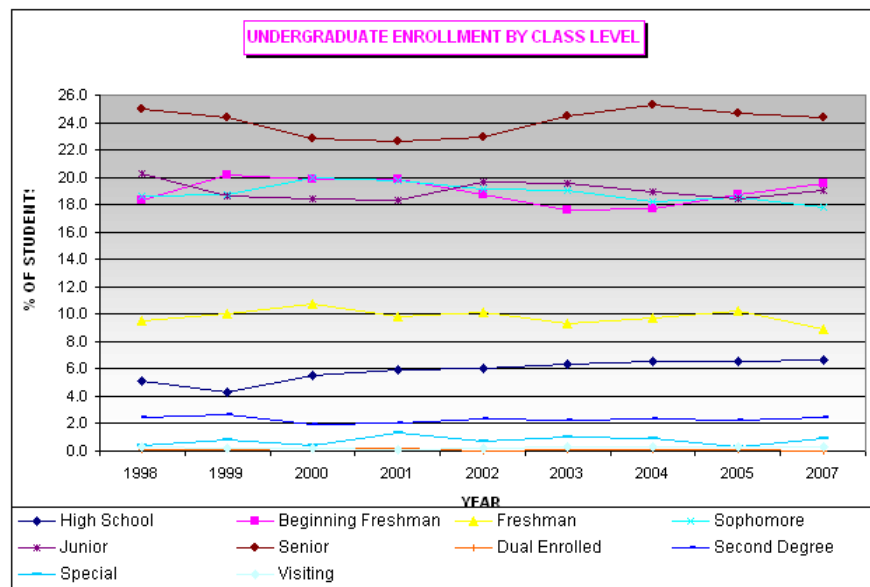
Visiting: Student in good standing at other accredited colleges or universities who is enrolled for one academic period as a visiting student.

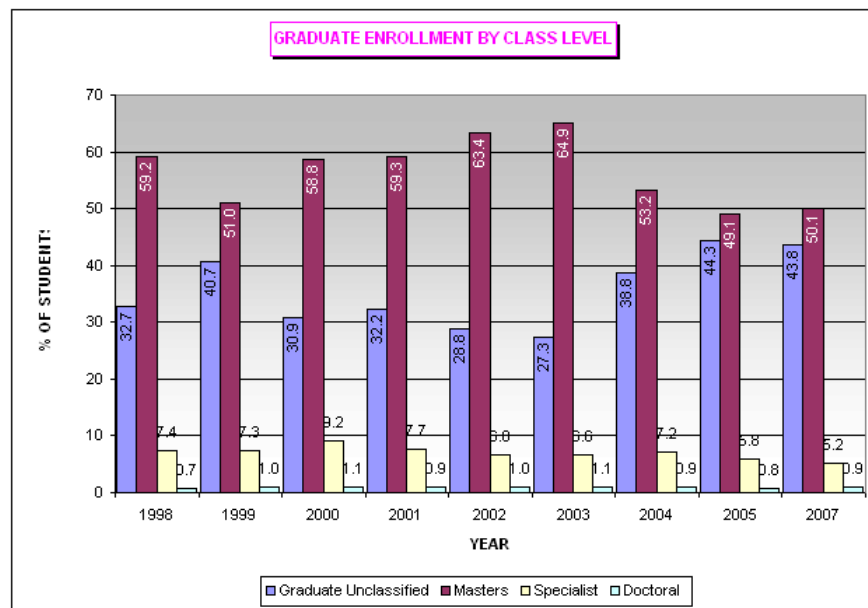
Graduates Unclassified: Graduate Students who are not classified under any category.

Masters: Students who have been accepted into the graduate school and are pursuing a masters level degree.

Specialist: Additional period of study beyond the master's degree for persons seeking initial or advanced certification in certain fields.

Doctoral: Students who are pursuing a doctoral degree.





Updated:07/17/2008

[Menu](#)
[Previous](#)
[Next](#)

115



## ENROLLMENT BY COLLEGE

## FALL 1998-2007

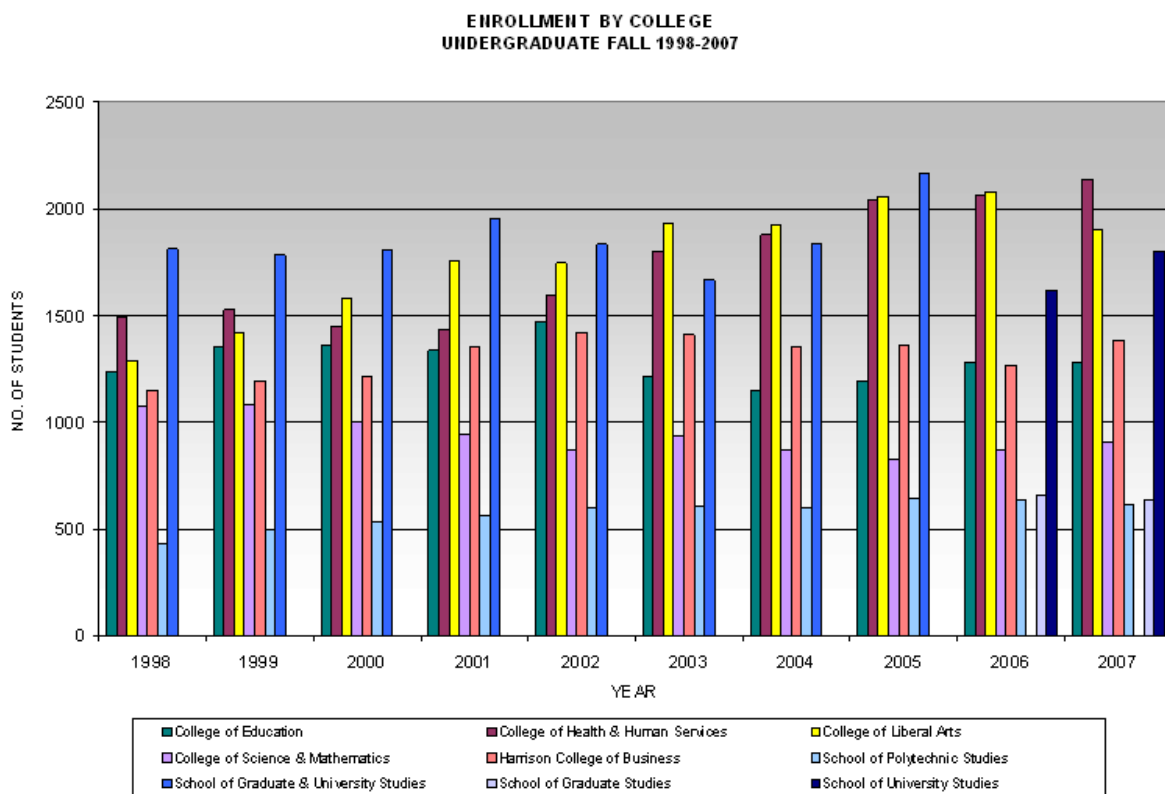
Year	Class		College of Education	College of Health & Human Services	College of Liberal Arts	College of Science & Mathematics	Harrison College of Business	School of Polytechnic Studies	School of Graduate & University Studies	School of Graduate Studies	School of University Studies	University Total
1998	UG	N	904	1391	1160	1025	1100	433	1436	0	0	7449
		%	10.6%	16.4%	13.7%	12.1%	13.0%	5.1%	16.9%	0.0%	0.0%	87.7%
	GR	N	336	101	128	52	52	0	376	0	0	1045
		%	4.0%	1.2%	1.5%	0.6%	0.6%	0.0%	4.4%	0.0%	0.0%	12.3%
1999	UG	N	1240	1492	1288	1077	1152	433	1812	0	0	8494
		%	9.4%	12.4%	10.6%	8.9%	9.5%	3.6%	14.3%	0.0%	0.0%	84.3%
	GR	N	409	129	142	50	66	0	593	0	0	1389
		%	4.6%	1.5%	1.6%	0.6%	0.7%	0.0%	6.7%	0.0%	0.0%	15.7%
2000	UG	N	1355	1529	1422	1086	1196	497	1784	0	0	8869
		%	10.6%	12.4%	10.6%	8.9%	9.5%	3.6%	14.3%	0.0%	0.0%	84.3%
	GR	N	973	1312	1439	936	1140	535	1425	0	0	7760
		%	10.9%	14.7%	16.1%	10.5%	12.7%	6.0%	15.9%	0.0%	0.0%	86.7%
2001	UG	N	388	136	143	66	77	1	380	0	0	1191
		%	4.3%	1.5%	1.6%	0.7%	0.9%	0.0%	4.2%	0.0%	0.0%	13.3%
	GR	N	1361	1448	1582	1002	1217	536	1805	0	0	8951
		%	10.6%	14.0%	16.8%	9.4%	13.5%	5.9%	16.4%	0.0%	0.0%	86.6%
2002	UG	N	995	1309	1572	876	1261	550	1535	0	0	8098
		%	10.6%	14.0%	16.8%	9.4%	13.5%	5.9%	16.4%	0.0%	0.0%	86.6%
	GR	N	344	128	182	71	93	14	422	0	0	1254
		%	3.7%	1.4%	1.9%	0.8%	1.0%	0.1%	4.5%	0.0%	0.0%	13.4%
2003	UG	N	1339	1437	1754	947	1354	564	1957	0	0	9352
		%	10.6%	14.0%	16.8%	9.4%	13.5%	5.9%	16.4%	0.0%	0.0%	86.6%
	GR	N	1106	1463	1562	798	1351	583	1488	0	0	8351
		%	11.6%	15.3%	16.4%	8.4%	14.2%	6.1%	15.6%	0.0%	0.0%	87.6%
2004	UG	N	366	130	184	71	71	14	347	0	0	1183
		%	3.8%	1.4%	1.9%	0.7%	0.7%	0.1%	3.6%	0.0%	0.0%	12.4%
	GR	N	1472	1593	1746	869	1422	597	1835	0	0	9534
		%	10.6%	14.0%	16.8%	9.4%	13.5%	5.9%	16.4%	0.0%	0.0%	86.6%
2005	UG	N	891	1665	1776	870	1334	578	1369	0	0	8483
		%	9.3%	17.4%	18.6%	9.1%	13.9%	6.0%	14.3%	0.0%	0.0%	88.6%
	GR	N	327	138	157	64	75	27	299	0	0	1087
		%	3.4%	1.4%	1.6%	0.7%	0.8%	0.3%	3.1%	0.0%	0.0%	11.4%
2006	UG	N	1218	1803	1933	934	1409	605	1668	0	0	9570
		%	10.6%	14.0%	16.8%	9.4%	13.5%	5.9%	16.4%	0.0%	0.0%	86.6%
	GR	N	865	1743	1795	817	1273	577	1390	0	0	8460
		%	9.0%	18.1%	18.7%	8.5%	13.2%	6.0%	14.5%	0.0%	0.0%	88.0%
2007	UG	N	282	135	128	57	81	25	450	0	0	1158
		%	2.9%	1.4%	1.3%	0.6%	0.8%	0.3%	4.7%	0.0%	0.0%	12.0%
	GR	N	1147	1878	1923	874	1354	602	1840	0	0	9618
		%	10.6%	14.0%	16.8%	9.4%	13.5%	5.9%	16.4%	0.0%	0.0%	86.6%

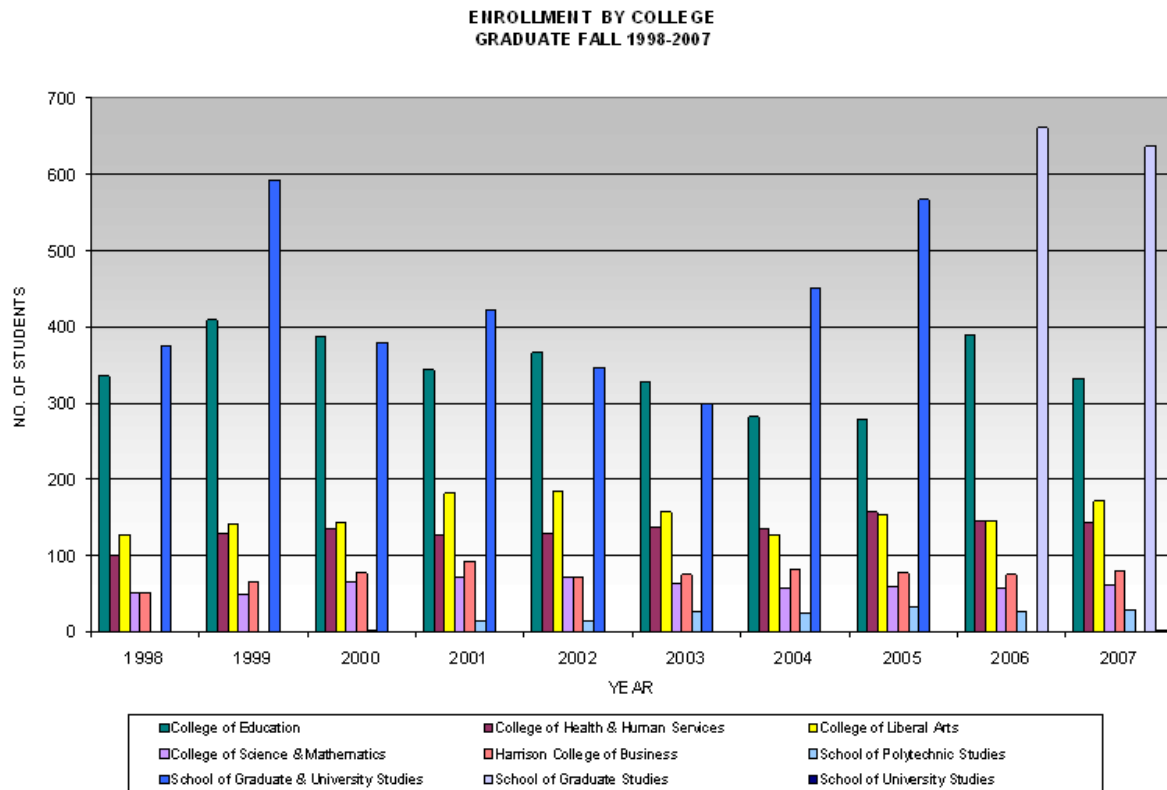
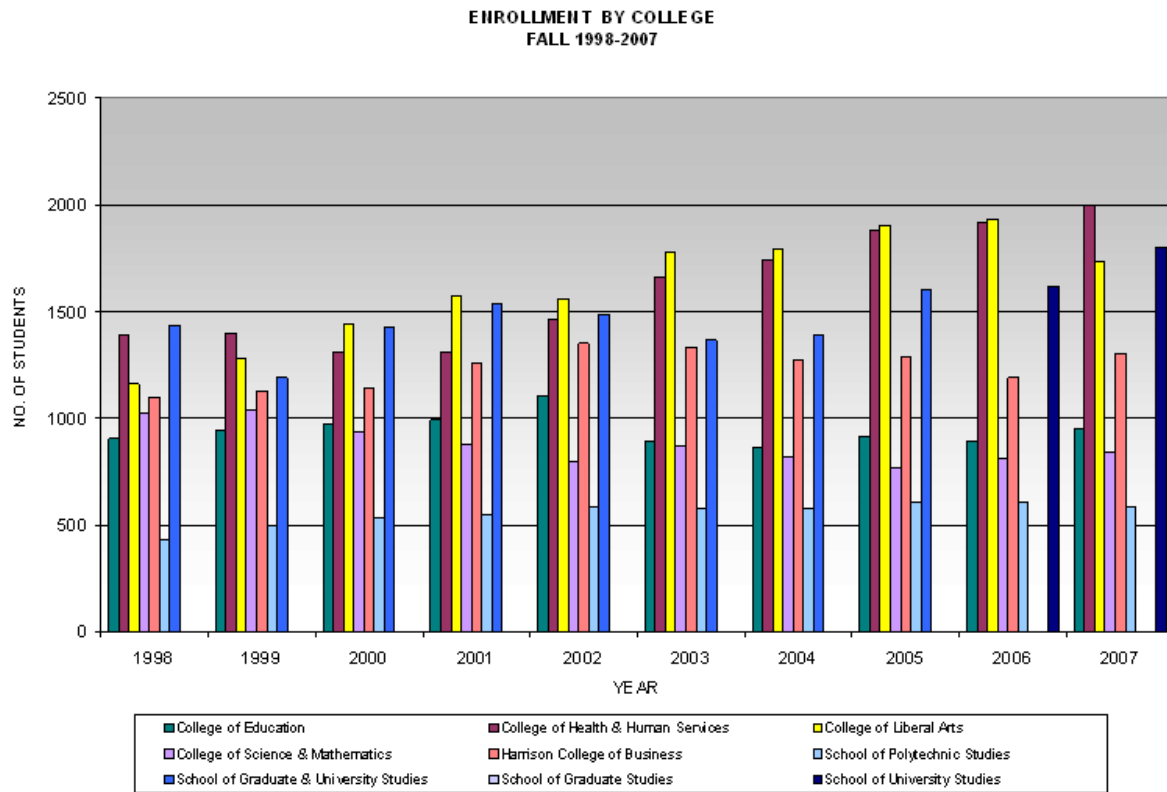
2005	UG	N	916	1883	1906	766	1286	609	1602	0	0	8968
		%	8.9%	18.3%	18.5%	7.4%	12.5%	5.9%	15.6%	0.0%	0.0%	87.1%
	GR	N	278	157	153	60	77	32	567	0	0	1324
		%	2.7%	1.5%	1.5%	0.6%	0.7%	0.3%	5.5%	0.0%	0.0%	12.9%
2006	UG	N	1194	2040	2059	826	1363	641	2169	0	0	10292
		%	8.5%	18.3%	18.5%	7.8%	11.4%	5.8%	0.0%	0.0%	15.4%	85.7%
	GR	N	389	145	146	57	75	27	0	661	0	1500
		%	3.7%	1.4%	1.4%	0.5%	0.7%	0.3%	0.0%	6.3%	0.0%	14.3%
2007	UG	N	1283	2062	2082	871	1266	634	0	661	1618	10477
		%	8.9%	18.7%	16.2%	7.9%	12.2%	5.5%	0.0%	0.0%	16.9%	86.3%
	GR	N	949	1996	1731	842	1306	585	0	0	1800	9209
		%	3.1%	1.3%	1.6%	0.6%	0.8%	0.3%	0.0%	6.0%	0.0%	13.7%
2007	UG	N	1281	2139	1903	904	1386	613	0	637	1802	10665
		%	8.9%	18.7%	16.2%	7.9%	12.2%	5.5%	0.0%	0.0%	16.9%	86.3%
	GR	N	332	143	172	62	80	28	0	637	2	1456
		%	3.1%	1.3%	1.6%	0.6%	0.8%	0.3%	0.0%	6.0%	0.0%	13.7%

Source: Data for this table was taken on the fall 4-week census date.

Note: Enrollment count by first Major only.

Note: The School of Graduate Studies and the School of University Studies were separated for 2006.





Updated: 07/17/2008

[Menu](#) [Previous](#) [Next](#)

1 6 6

**ON-CAMPUS, OFF-CAMPUS ENROLLMENT**  
**based on census (4 week) data**  
**(FALL 1998-2007)**

Year	Fall 1998		Fall 1999		% Change between Fall 1998 and Fall 1999		Fall 2000		% Change between Fall 1999 and Fall 2000	
	Credits	Headcount	Credits	Headcount	Credits	Headcount	Credits	Headcount	Credits	Headcount
<b>Cape Girardeau Campus</b>										
Undergraduate	87475.5	6845	87281.5	6823	-0.2%	-0.3%	87985.5	6954	0.8%	1.9%
Graduate	3797	775	3765	724	-0.8%	-6.6%	3992	769	6.0%	6.2%
	91272.5	7620	91046.5	7547	-0.2%	-1.0%	91977.5	7723	1.0%	2.3%
<b>Regional Campuses</b>										
Undergraduate	1324	300	1262	314	-4.7%	4.7%	1468	379	16.3%	20.7%
Graduate	65	30	106	35	63.1%	16.7%	147	48	38.7%	37.1%
	1389	330	1368	349	-1.5%	5.8%	1615	427	18.1%	22.3%
<b>Alternative Access Not Regional Campuses</b>										
Undergraduate	2131	509	2419	526	13.5%	3.3%	2758	679	14.0%	29.1%
Graduate	520	184	1768	548	240.0%	197.8%	922	301	-47.9%	-45.1%
	2651	693	4187	1074	57.9%	55.0%	3680	980	-12.1%	-8.8%
<b>Alternative Access (Web &amp; ITV)</b>										
Undergraduate	628	197	941	303	49.8%	53.8%	1976	577	110.0%	90.4%
Graduate	462	147	771	228	66.9%	55.1%	774	225	0.4%	-1.3%
	1090	344	1712	531	57.1%	54.4%	2750	802	60.6%	51.0%
<b>Face to Face</b>										
Cape Girardeau Campus	91272.5	7620	91046.5	7547	-0.2%	-1.0%	91977.5	7723	1.0%	2.3%
Regional Campuses	1389	330	1368	349	-1.5%	5.8%	1615	427	18.1%	22.3%
Alternative Access Not Regional Campuses	2651	693	4187	1074	57.9%	55.0%	3680	980	-12.1%	-8.8%
	95312.5	8643	96601.5	8970	1.4%	3.8%	97272.5	9130	0.7%	1.8%
<b>Alternative Access (Web &amp; ITV)</b>										
ITV - Cape Girardeau Campus	455	156	569	194	25.1%	24.4%	845	272	48.5%	40.2%
ITV - Regional Campuses	180	57	235	76	30.6%	33.3%	228	71	-3.0%	-6.6%
ITV - Alternative Access Not Regional Campuses	455	132	557	156	22.4%	18.2%	552	160	-0.9%	2.6%
Web	0	0	351	116	0.0%	0.0%	1125	348	220.5%	200.0%
	1090	345	1712	542	57.1%	57.1%	2750	851	60.6%	57.0%

Year	Fall 2001		% Change between Fall 2000 and Fall 2001		Fall 2002		% Change between Fall 2001 and Fall 2002	
	Credits	Headcount	Credits	Headcount	Credits	Headcount	Credits	Headcount
<b>Cape Girardeau Campus</b>								
Undergraduate	90877.5	7122	3.3%	2.4%	93412	7373	2.8%	3.5%

<b>Graduate</b>	3679	728	-7.8%	-5.3%	3370	698	-8.4%	-4.1%
	94556.5	7850	2.8%	1.6%	96782	8071	2.4%	2.8%
<b>Regional Campuses</b>								
<b>Undergraduate</b>	1756	397	19.6%	4.7%	2173	472	23.7%	18.9%
<b>Graduate</b>	313	91	112.9%	89.6%	293	88	-6.4%	-3.3%
	2069	488	28.1%	14.3%	2466	560	19.2%	14.8%
<b>Alternative Access Not Regional Campuses</b>								
<b>Undergraduate</b>	3252	788	17.9%	16.1%	2864	655	-11.9%	-16.9%
<b>Graduate</b>	1156	384	25.4%	27.6%	992	354	-14.2%	-7.8%
	4408	1172	19.8%	19.6%	3856	1009	-12.5%	-13.9%
<b>Alternative Access (Web &amp; ITV)</b>								
<b>Undergraduate</b>	2324	660	17.6%	14.4%	4306	1207	85.3%	82.9%
<b>Graduate</b>	823	249	6.3%	10.7%	1091	299	32.6%	20.1%
	3147	909	14.4%	13.3%	5397	1506	71.5%	65.7%
<b>Face to Face</b>								
<b>Cape Girardeau Campus</b>	94556.5	7850	2.8%	1.6%	96782	8071	2.4%	2.8%
<b>Regional Campuses</b>	2069	488	28.1%	14.3%	2466	560	19.2%	14.8%
<b>Alternative Access Not Regional Campuses</b>	4408	1172	19.8%	19.6%	3856	1009	-12.5%	-13.9%
	101033.5	9510	3.9%	4.2%	103104	9640	2.0%	1.4%
<b>Alternative Access (Web &amp; ITV)</b>								
<b>ITV - Cape Girardeau Campus</b>	735	228	-13.0%	-16.2%	981	310	33.5%	36.0%
<b>ITV - Regional Campuses</b>	401	112	75.9%	57.7%	479	123	19.5%	9.8%
<b>ITV - Alternative Access Not Regional Campuses</b>	431	133	-21.9%	-16.9%	417	111	-3.2%	-16.5%
<b>Web</b>	1580	476	40.4%	36.8%	3520	1012	122.8%	112.6%
	3147	949	14.4%	11.5%	5397	1556	71.5%	64.0%

Year	Fall 2003		% Change between Fall 2002 and Fall 2003		Fall 2004		% Change between Fall 2003 and Fall 2004	
	Credits	Headcount	Credits	Headcount	Credits	Headcount	Credits	Headcount
<b>Cape Girardeau Campus</b>								
<b>Undergraduate</b>	93151	7415	-0.3%	0.6%	88819	7185	-4.7%	-3.1%
<b>Graduate</b>	2940	612	-12.8%	-12.3%	2825	549	-3.9%	-10.3%
	96091	8027	-0.7%	-0.5%	91644	7734	-4.6%	-3.7%
<b>Regional Campuses</b>								
<b>Undergraduate</b>	2255	437	3.8%	-7.4%	2892	584	28.2%	33.6%
<b>Graduate</b>	227	66	-22.5%	-25.0%	180	54	-20.7%	-18.2%

	2482	503	0.6%	-10.2%	3072	638	23.8%	26.8%
<b>Alternative Access Not Regional Campuses</b>								
Undergraduate	3207	762	12.0%	16.3%	2951	695	-8.0%	-8.8%
Graduate	823	269	-17.0%	-24.0%	1448	416	75.9%	54.6%
	4030	1031	4.5%	2.2%	4399	1111	9.2%	7.8%
<b>Alternative Access (Web &amp; ITV)</b>								
Undergraduate	6052	1713	40.5%	41.9%	9266	2253	53.1%	31.5%
Graduate	1461	400	33.9%	33.8%	1133	313	-22.5%	-21.8%
	7513	2113	39.2%	40.3%	10399	2566	38.4%	21.4%
<b>Face to Face</b>								
Cape Girardeau Campus	96091	8027	-0.7%	-0.5%	91644	7734	-4.6%	-3.7%
Regional Campuses	2482	503	0.6%	-10.2%	3072	638	23.8%	26.8%
Alternative Access Not Regional Campuses	4030	1031	4.5%	2.2%	4399	1111	9.2%	7.8%
	102603	9561	-0.5%	-0.8%	99115	9483	-3.4%	-0.8%
<b>Alternative Access (Web &amp; ITV)</b>								
ITV - Cape Girardeau Campus	1434	459	46.2%	48.1%	1647	513	14.9%	11.8%
ITV - Regional Campuses	714	191	49.1%	55.3%	1149	259	60.9%	35.6%
ITV - Alternative Access Not Regional Campuses	465	125	11.5%	12.6%	397	95	-14.6%	-24.0%
Web	4900	1479	39.2%	46.1%	7206	1848	47.1%	24.9%
	7513	2254	39.2%	44.9%	10399	2715	38.4%	20.5%

Year	Fall 2005		% Change between Fall 2004 and Fall 2005		Fall 2006		% Change between Fall 2005 and Fall 2006	
	Credits	Headcount	Credits	Headcount	Credits	Headcount	Credits	Headcount
<b>Cape Girardeau Campus</b>								
Undergraduate	88022.5	7173	-0.9%	-0.2%	85963	7014	-2.3%	-2.2%
Graduate	3096	592	9.6%	7.8%	2968	531	-4.1%	-10.3%
	91118.5	7765	-0.6%	0.4%	88931	7545	-2.4%	-2.8%
<b>Regional Campuses</b>								
Undergraduate	7708	1079	166.5%	84.8%	7360	1030	-4.5%	-4.5%
Graduate	30	8	-83.3%	-85.2%	177	57	490.0%	612.5%
	7738	1087	151.9%	70.4%	7537	1087	-2.6%	0.0%
<b>Alternative Access Not Regional Campuses</b>								
Undergraduate	2730	629	-7.5%	-9.5%	2979	649	9.1%	3.2%
Graduate	1725	605	19.1%	45.4%	2678	791	55.2%	30.7%
	4455	1234	1.3%	11.1%	5657	1440	27.0%	16.7%



<b>Alternative Access (Web &amp; ITV)</b>								
Undergraduate	10811	2482	16.7%	10.2%	12339	2791	14.1%	12.4%
Graduate	1300	365	14.7%	16.6%	1254	325	-3.5%	-11.0%
	12111	2847	16.5%	11.0%	13593	3116	12.2%	9.4%
<b>Face to Face</b>								
Cape Girardeau Campus	91118.5	7765	-0.6%	0.4%	88931	7545	-2.4%	-2.8%
Regional Campuses	7738	1087	151.9%	70.4%	7537	1087	-2.6%	0.0%
Alternative Access Not Regional Campuses	4455	1234	1.3%	11.1%	5657	1440	27.0%	16.7%
	103311.5	10086	4.2%	6.4%	102125	10072	-1.1%	-0.1%
<b>Alternative Access (Web &amp; ITV)</b>								
ITV - Cape Girardeau Campus	1704	528	3.5%	2.9%	1305	487	-23.4%	-7.8%
ITV - Regional Campuses	1598	379	39.1%	46.3%	2367	542	48.1%	43.0%
ITV - Alternative Access Not Regional Campuses	503	112	26.7%	17.9%	523	113	4.0%	0.9%
Web	8306	2061	15.3%	11.5%	9398	2221	13.1%	7.8%
	12111	3080	16.5%	13.4%	13593	3363	12.2%	9.2%

Year	Fall 2007		% Change between Fall 2006 and Fall 2007		% Change between Fall 1998 and Fall 2007	
	Credits	Headcount	Credits	Headcount	Credits	Headcount
<b>Cape Girardeau Campus</b>						
Undergraduate	89380.5	7225	4.0%	3.0%	2.2%	5.6%
Graduate	2846	555	-4.1%	4.5%	-25.0%	-28.4%
	92226.5	7780	3.7%	3.1%	1.0%	2.1%
<b>Regional Campuses</b>						
Undergraduate	6929	1076	-5.9%	4.5%	423.3%	258.7%
Graduate	134	42	-24.3%	-26.3%	106.2%	40.0%
	7063	1118	-6.3%	2.9%	408.5%	238.8%
<b>Alternative Access Not Regional Campuses</b>						
Undergraduate	3325	751	11.6%	15.7%	56.0%	47.5%
Graduate	2538	760	-5.2%	-3.9%	388.1%	313.0%
	5863	1511	3.6%	4.9%	121.2%	118.0%
<b>Alternative Access (Web &amp; ITV)</b>						
Undergraduate	12141	2628	-1.6%	-5.8%	1833.3%	1234.0%
Graduate	1218	341	-2.9%	4.9%	163.6%	132.0%
	13359	2969	-1.7%	-4.7%	1125.6%	763.1%
<b>Face to Face</b>						

Cape Girardeau Campus	92226.5	7780	3.7%	3.1%	1.0%	2.1%
Regional Campuses	7063	1118	-6.3%	2.9%	408.5%	238.8%
Alternative Access Not Regional Campuses	5863	1511	3.6%	4.9%	121.2%	118.0%
	105153	10409	3.0%	3.3%	10.3%	20.4%
<b>Alternative Access (Web &amp; ITV)</b>						
ITV - Cape Girardeau Campus	1017	369	-22.1%	-24.2%	123.5%	136.5%
ITV - Regional Campuses	3066	629	29.5%	16.1%	1603.3%	1003.5%
ITV - Alternative Access Not Regional Campuses	503	98	-3.8%	-13.3%	10.5%	-25.8%
Web	8773	2076	-6.7%	-6.5%	N.A.	N.A.
	13359	3172	-1.7%	-5.7%	1125.6%	819.4%

Updated: 01/11/2008

[Menu](#)
[Previous](#)
[Next](#)

1 4 1

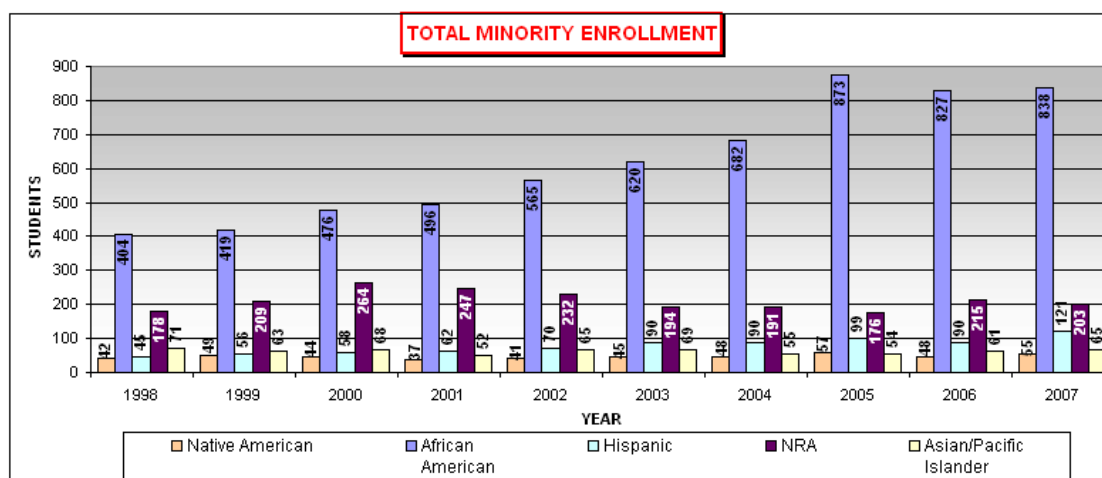
**TOTAL ENROLLMENT BY ETHNICITY**  
**UNDUPLICATED COUNT (FALL 1998-2007)**

Year	African American		Native American		Asian/Pacific Islander		Caucasian		Hispanic		NRA		Not Reported		Total	
	N	%	N	%	N	%	N	%	N	%	N	%	N	%	N	%
1998	404	4.8	42	0.5	71	0.8	7754	91.3	45	0.5	178	2.1	0	0.0	8494	100.0
1999	419	4.7	49	0.6	63	0.7	8073	91.0	56	0.6	209	2.4	0	0.0	8869	100.0
2000	476	5.3	44	0.5	68	0.8	8041	89.8	58	0.6	264	2.9	0	0.0	8951	100.0
2001	496	5.3	37	0.4	52	0.6	8458	90.4	62	0.7	247	2.6	0	0.0	9352	100.0
2002	565	5.9	41	0.4	65	0.7	8561	89.8	70	0.7	232	2.4	0	0.0	9534	100.0
2003	620	6.5	45	0.5	69	0.7	8552	89.4	90	0.9	194	2.0	0	0.0	9570	100.0
2004	682	7.1	48	0.5	55	0.6	8552	88.9	90	0.9	191	2.0	0	0.0	9618	100.0
2005	873	8.5	57	0.6	54	0.5	9033	87.8	99	1.0	176	1.7	0	0.0	10292	100.0
2006	827	7.9	48	0.5	61	0.6	8755	83.6	90	0.9	215	2.1	481	4.6	10477	100.0
2007	838	7.9	55	0.5	65	0.6	8772	82.3	121	1.1	203	1.9	611	5.7	10665	100.0

**Note:**

Data for this table was taken on the Fall Census date.

The Caucasian and Not reported count was not included in the chart.



Updated: 12/13/2007

[Menu](#) [Previous](#) [Next](#)

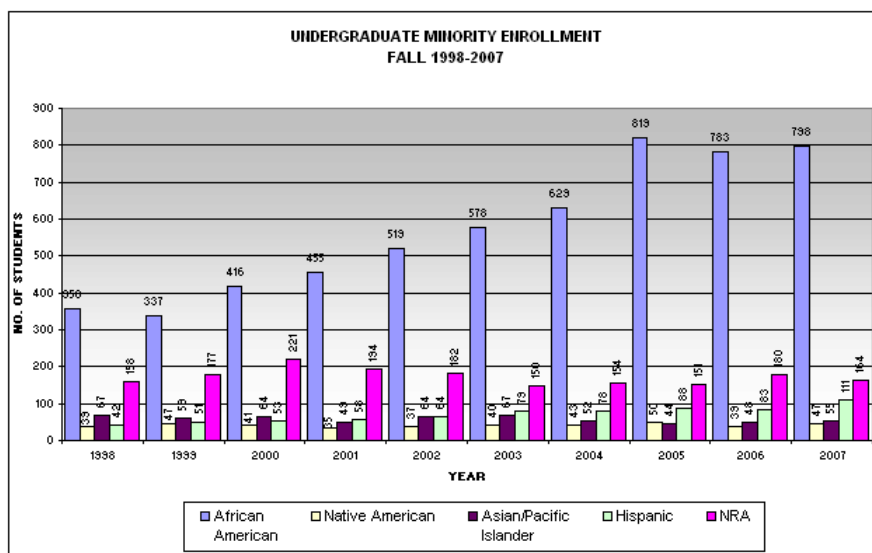
# Enrollment By Ethnicity

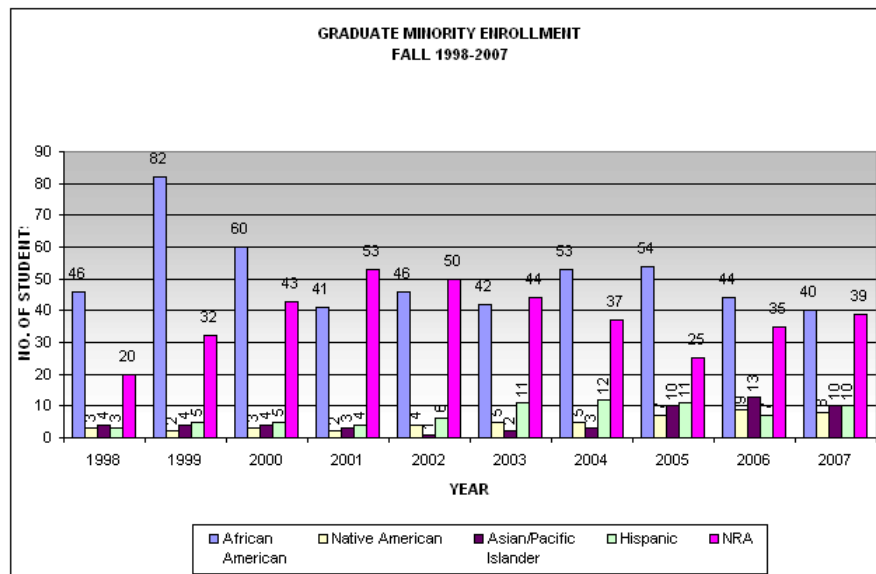
## UNDUPLICATED COUNT (FALL 1998-2007)

Year and Degree Level		African American		Native American		Asian/Pacific Islander		Caucasian		Hispanic		NRA		Not Reported		Total	
		N	%	N	%	N	%	N	%	N	%	N	%	N	%	N	%
1998	Graduate	46	4.4%	3	0.3%	4	0.4%	969	92.7%	3	0.3%	20	1.9%	0	0.0%	1045	100%
	Undergraduate	358	4.8%	39	0.5%	67	0.9%	6785	91.1%	42	0.6%	158	2.1%	0	0.0%	7449	100%
1999	Graduate	82	5.9%	2	0.1%	4	0.3%	1264	91.0%	5	0.4%	32	2.3%	0	0.0%	1389	100%
	Undergraduate	337	4.5%	47	0.6%	59	0.8%	6809	91.0%	51	0.7%	177	2.4%	0	0.0%	7480	100%
2000	Graduate	60	5.0%	3	0.3%	4	0.3%	1076	90.3%	5	0.4%	43	3.6%	0	0.0%	1191	100%
	Undergraduate	416	5.4%	41	0.5%	64	0.8%	6965	89.8%	53	0.7%	221	2.8%	0	0.0%	7760	100%
2001	Graduate	41	3.3%	2	0.2%	3	0.2%	1151	91.8%	4	0.3%	53	4.2%	0	0.0%	1254	100%
	Undergraduate	455	5.6%	35	0.4%	49	0.6%	7307	90.2%	58	0.7%	194	2.4%	0	0.0%	8098	100%
2002	Graduate	46	3.9%	4	0.3%	1	0.1%	1076	91.0%	6	0.5%	50	4.2%	0	0.0%	1183	100%
	Undergraduate	519	6.2%	37	0.4%	64	0.8%	7485	89.6%	64	0.8%	182	2.2%	0	0.0%	8351	100%
2003	Graduate	42	3.9%	5	0.5%	2	0.2%	983	90.4%	11	1.0%	44	4.0%	0	0.0%	1087	100%
	Undergraduate	578	6.8%	40	0.5%	67	0.8%	7569	89.2%	79	0.9%	150	1.8%	0	0.0%	8483	100%
2004	Graduate	53	4.6%	5	0.4%	3	0.3%	1048	90.5%	12	1.0%	37	3.2%	0	0.0%	1158	100%
	Undergraduate	629	7.4%	43	0.5%	52	0.6%	7504	88.7%	78	0.9%	154	1.8%	0	0.0%	8460	100%
2005	Graduate	54	4.1%	7	0.5%	10	0.8%	1217	91.9%	11	0.8%	25	1.9%	0	0.0%	1324	100%
	Undergraduate	819	9.1%	50	0.6%	44	0.5%	7816	87.2%	88	1.0%	151	1.7%	0	0.0%	8968	100%
2006	Graduate	44	2.9%	9	0.6%	13	0.9%	1364	90.9%	7	0.5%	35	2.3%	28	1.9%	1500	100%
	Undergraduate	783	8.7%	39	0.4%	48	0.5%	7391	82.3%	83	0.9%	180	2.0%	453	5.0%	8977	100%
2007	Graduate	40	2.7%	8	0.5%	10	0.7%	1278	87.8%	10	0.7%	39	2.7%	71	4.9%	1456	100%
	Undergraduate	798	8.7%	47	0.5%	55	0.6%	7494	81.4%	111	1.2%	164	1.8%	540	5.9%	9209	100%

Note: Data for this table was taken on the Fall Census date.

Unduplicated Count: Each student is counted only once irrespective of the number of majors he/she is enrolled in.





Updated: 07/17/2008

[Menu](#) [Previous](#) [Next](#)

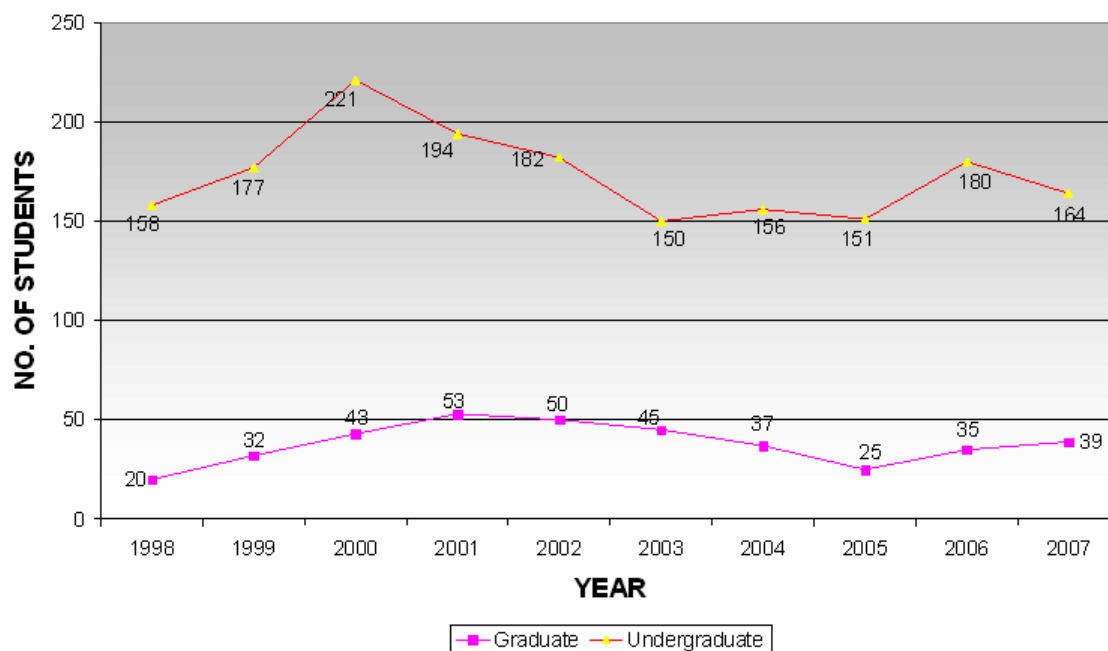
**INTERNATIONAL STUDENT ENROLLMENT  
FALL 1998 - Fall 2007**

Year	1998		1999		2000		2001		2002		2003		2004		2005		2006		2007	
	N	%	N	%	N	%	N	%	N	%	N	%	N	%	N	%	N	%	N	%
Graduate	20	11.2	32	15.3	43	16.3	53	21.5	50	21.6	45	23.1	37	19.2	25	14.2	35	16.28	39	19.21
Undergraduate	158	88.8	177	84.7	221	83.7	194	78.5	182	78.4	150	76.9	156	80.8	151	85.8	180	83.72	164	80.79
<b>Total</b>	<b>178</b>	<b>100</b>	<b>209</b>	<b>100</b>	<b>264</b>	<b>100</b>	<b>247</b>	<b>100</b>	<b>232</b>	<b>100</b>	<b>195</b>	<b>100</b>	<b>193</b>	<b>100</b>	<b>176</b>	<b>100</b>	<b>215</b>	<b>100</b>	<b>203</b>	<b>100</b>

**COUNTRY OF ORIGIN  
FALL 2007**

AUSTRALIA	3	HUNGARY	1	NIGERIA	2
BAHAMAS	1	INDIA	6	PAKISTAN	2
BANGLADESH	1	ITALY	1	PANAMA	5
BELGIUM	2	JAMAICA	2	POLAND	1
BENIN	2	JAPAN	69	RUSSIA	1
BRAZIL	2	JORDAN	1	SAUDI ARABIA	4
CANADA	3	KENYA	1	SRI LANKA (CEYLON)	3
CHINA, PEOPLES REPUBLIC	44	KOREA, REPUBLIC OF	9	TAIWAN (FORMOSA)	2
COLOMBIA	1	MALAYSIA	3	TURKEY	4
COTE D'IVOIRE (IVORY COAST)	1	MEXICO	2	UNITED ARAB EMIRATES	1
DENMARK	1	NEPAL	6	VENEZUELA	1
FRANCE	1	NETHERLANDS	2	ZIMBABWE	1
GERMANY	7	NEW ZEALAND	1		
HAITI	1	NICARAGUA	2	<b>TOTAL</b>	<b>203</b>

**INTERNATIONAL STUDENT ENROLLMENT  
FALL 1998-2007**



Updated: 12/21/2007

[Menu](#) [Previous](#) [Next](#)

# IN-STATE & OUT-OF-STATE, AND FOREIGN COUNTRIES ENROLLMENT (FALL 1998-2007)

## IN-STATE, OUT-OF-STATE AND FOREIGN COUNTRIES ENROLLMENT- UNDERGRADUATES UNDULICATED COUNT (FALL 1998-2007)

Year	In-State		Out-of-State		Foreign Countries		Unknown		Total	
	N	%	N	%	N	%	N	%	N	%
1998	6335	85.0%	838	11.2%	155	2.1%	121	1.6%	7449	100.0%
1999	6365	85.1%	827	11.1%	171	2.3%	117	1.6%	7480	100.0%
2000	6503	83.8%	875	11.3%	213	2.7%	169	2.2%	7760	100.0%
2001	6890	85.1%	852	10.5%	196	2.4%	160	2.0%	8098	100.0%
2002	7093	84.9%	876	10.5%	182	2.2%	200	2.4%	8351	100.0%
2003	7191	84.8%	919	10.8%	155	1.8%	218	2.6%	8483	100.0%
2004	7200	85.1%	875	10.3%	156	1.8%	229	2.7%	8460	100.0%
2005	7712	86.0%	903	10.1%	149	1.7%	204	2.3%	8968	100.0%
2006	7779	86.7%	940	10.5%	179	2.0%	79	0.9%	8977	100.0%
2007	7999	86.9%	992	10.8%	159	1.7%	59	0.6%	9209	100.0%

## IN-STATE, OUT-of-STATE AND FOREIGN COUNTRIES ENROLLMENT- GRADUATES UNDULICATED COUNT (FALL 1998-2007)

Year	In-State		Out-of-State		Foreign Countries		Unknown		Total	
	N	%	N	%	N	%	N	%	N	%
1998	910	87.1%	111	10.6%	18	1.7%	6	0.6%	1045	100.0%
1999	1241	89.3%	101	7.3%	32	2.3%	15	1.1%	1389	100.0%
2000	1043	87.6%	91	7.6%	44	3.7%	13	1.1%	1191	100.0%
2001	1078	86.0%	104	8.3%	53	4.2%	19	1.5%	1254	100.0%
2002	1020	86.2%	94	7.9%	49	4.1%	20	1.7%	1183	100.0%
2003	930	85.6%	93	8.6%	44	4.0%	20	1.8%	1087	100.0%
2004	1010	87.2%	95	8.2%	37	3.2%	16	1.4%	1158	100.0%
2005	1168	88.2%	105	7.9%	26	2.0%	25	1.9%	1324	100.0%
2006	1193	79.5%	98	6.5%	35	2.3%	174	11.6%	1500	100.0%
2007	1257	86.3%	108	7.4%	39	2.7%	52	3.6%	1456	100.0%

## IN-STATE, OUT-OF-STATE AND FOREIGN COUNTRIES ENROLLMENT- TOTAL UNDULICATED COUNT (FALL 1998-2007)

Year	In-State		Out of State		Foreign Countries		Unknown		Total	
	N	%	N	%	N	%	N	%	N	%
1998	7245	85.3%	949	11.2%	173	2.0%	127	1.5%	8494	100.0%
1999	7606	85.8%	928	10.5%	203	2.3%	132	1.5%	8869	100.0%
2000	7546	84.3%	966	10.8%	257	2.9%	182	2.0%	8951	100.0%
2001	7968	85.2%	956	10.2%	249	2.7%	179	1.9%	9352	100.0%
2002	8113	85.1%	970	10.2%	231	2.4%	220	2.3%	9534	100.0%
2003	8121	84.9%	1012	10.6%	199	2.1%	238	2.5%	9570	100.0%
2004	8210	85.4%	970	10.1%	193	2.0%	245	2.5%	9618	100.0%
2005	8860	86.3%	1008	9.8%	175	1.7%	229	2.2%	10272	100.0%
2006	8972	85.6%	1038	9.9%	214	2.0%	253	2.4%	10477	100.0%
2007	9256	86.8%	1100	10.3%	198	1.9%	111	1.0%	10665	100.0%

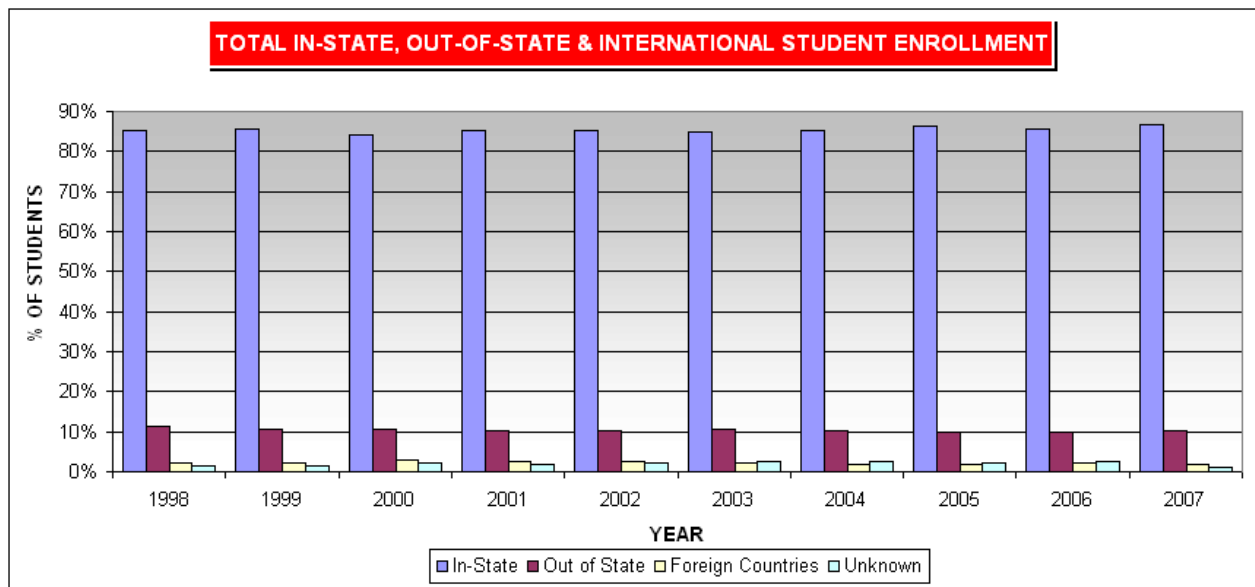
### Note:

Data for this table was taken on the Fall Census date.

Students from "Foreign Countries" in these tables are the students who have a foreign address as their permanent address. This number need not match the number of non-resident aliens.

**Unduplicated Count:** Each student is counted only once irrespective of the number of majors he/she is enrolled in.





Updated: 12/14/2007

[Menu](#) [Previous](#) [Next](#)

### UNDERGRADUATE ENROLLMENT BY COUNTY (FALL 1998-2007)

<i>County</i>	<i>1998 N</i>	<i>1999 N</i>	<i>2000 N</i>	<i>2001 N</i>	<i>2002 N</i>	<i>2003 N</i>	<i>2004 N</i>	<i>2005 N</i>	<i>2006 N</i>	<i>2007 N</i>	<i>%</i>
ADAIR	0	0	1	1	3	2	2	2	1	3	0.03
ANDREW	1	1	1	1	0	0	1	1	1	2	0.02
ATCHISON	1	0	0	0	0	0	0	0	0	0	0.00
AUDRAIN	10	4	4	2	1	3	4	3	2	0	0.00
BARRY	5	4	4	2	1	2	2	2	2	1	0.01
BARTON	1	1	1	2	0	1	1	0	0	0	0.00
BATES	1	1	2	1	2	1	1	1	1	1	0.01
BENTON	1	0	1	1	1	1	1	0	0	1	0.01
BOLLINGER	129	128	138	150	158	149	168	178	208	203	2.20
BOONE	13	10	18	22	19	16	14	16	20	19	0.21
BUCHANAN	2	0	0	0	0	1	1	2	3	4	0.04
BUTLER	161	145	143	157	166	143	156	168	155	129	1.40
CALDWELL	1	0	0	0	0	1	1	1	1	0	0.00
CALLAWAY	9	12	10	15	21	20	17	18	11	8	0.09
CAMDEN	4	4	4	2	2	3	2	4	2	4	0.04
CAPE GIRARDEAU	1613	1560	1750	1686	1760	1814	1777	1789	1879	1966	21.35
CARROLL	0	0	0	0	1	0	0	0	0	0	0.00
CARTER	17	22	27	26	23	17	13	22	16	15	0.16
CASS	6	5	5	2	3	5	3	4	4	4	0.04
CEDAR	0	0	0	0	0	1	1	0	2	0	0.00
CHARITON	0	0	0	1	2	3	3	3	0	0	0.00
CHRISTIAN	1	1	1	2	1	2	1	4	4	3	0.03
CLARK	1	0	0	0	1	0	0	0	0	1	0.01
CLAY	7	5	7	7	5	5	6	3	6	7	0.08
CLINTON	0	0	0	0	1	1	2	4	1	2	0.02
COLE	30	26	22	23	21	28	28	31	22	21	0.23
COOPER	1	1	3	3	2	2	3	4	4	4	0.04
CRAWFORD	11	10	11	12	9	7	6	10	10	8	0.09
DADE	2	2	1	1	0	0	0	0	1	1	0.01
DAVIESS	0	0	0	0	0	1	1	1	1	0	0.00
DENT	5	4	3	1	1	2	2	4	4	6	0.07
DOUGLAS	3	2	2	1	1	0	0	2	3	2	0.02
DUNKLIN	100	97	111	118	155	144	148	332	329	356	3.87
FRANKLIN	78	99	95	103	107	100	107	99	106	136	1.48
GASCONADE	7	7	8	4	7	8	8	7	8	10	0.11
GREENE	8	7	6	8	9	5	7	7	7	11	0.12
GRUNDY	0	0	0	0	0	0	0	0	0	0	0.00
HARRISON	0	0	0	0	1	1	2	0	0	0	0.00
HENRY	0	0	0	0	0	0	0	0	0	3	0.03
HICKORY	0	0	0		1	1	0	0	0	0	0.00
HOLT	0	0	0	0	0	0	1	1	1	1	0.01
HOWARD	2	0	0	1	3	3	3	2	1	1	0.01
HOWELL	8	12	11	10	6	11	6	6	11	8	0.09
IRON	43	36	35	49	47	37	38	38	35	36	0.39
JACKSON	14	16	15	16	19	16	19	20	37	41	0.45
JASPER	6	7	4	2	2	1	1	0	1	7	0.08
JEFFERSON	360	329	320	369	355	333	308	327	316	375	4.07
JOHNSON	2	1	1	2	2	3	4	2	2	2	0.02
LACLEDE	2	3	2	4	2	2	1	5	4	3	0.03

LAFAYETTE	1	1	1	1	1	1	1	0	2	2	0.02
LAWRENCE	3	2	0	0	0	0	0	0	0	1	0.01
LEWIS	2	2	3	2	2	6	5	5	7	5	0.05
LINCOLN	9	11	13	23	26	19	26	23	35	38	0.41
LINN	0	0	0	1	1	1	2	1	1	1	0.01
LIVINGSTON	1	0	1	2	1	1	1	0	0	1	0.01
MACON	1	0	0	0	1	1	3	3	4	3	0.03
MADISON	53	52	41	46	52	39	34	46	42	41	0.45
MARIES	1	1	1	1	1	1	1	1	3	2	0.02
MARION	15	13	15	16	18	19	17	13	10	7	0.08
MERCER	2	0	0	0	0	0	0	0	0	0	0.00
MCDONALD	0	0	0	0	0	0	0	0	0	0	0.00
MILLER	4	3	1	1	2	3	2	3	2	3	0.03
MISSISSIPPI	159	158	155	177	165	174	201	192	212	213	2.31
MONITEAU	1	1	1	1	0	0	0	2	1	1	0.01
MONROE	2	1	0	0	0	0	0	1	0	0	0.00
MONTGOMERY	7	6	5	2	3	3	2	3	2	6	0.07
MORGAN	0		0	0	0	0	0	1	1	0	0.00
NEW MADRID	218	190	0	208	199	203	200	238	241	221	2.40
NEWTON	3	1	0	1	2	0	0	0	0	1	0.01
NODAWAY	0	0	2	2	2	2	1	0	1	1	0.01
OREGON	2	2	2	1	0	0	0	1	1	1	0.01
OSAGE	0	1	4	5	4	3	0	2	1	3	0.03
OZARK	0	0	2	3	3	3	5	1	2	2	0.02
PEMISCOT	38	37	37	51	44	55	68	130	136	126	1.37
PERRY	273	290	270	243	235	226	202	237	252	254	2.76
PETTIS	4	3	1	2	3	2	1	2	4	4	0.04
PHELPS	17	19	15	19	21	25	18	18	15	14	0.15
PIKE	10	9	9	9	8	14	10	9	7	5	0.05
PLATTE	3	4	3	5	6	5	5	1	4	7	0.08
POLK	2	1	0	0	2	2	2	2	1	2	0.02
PULASKI	2	2	1	1	1	1	4	2	3	4	0.04
PUTNAM	0	1	0	0	0	0	0	0	1	2	0.02
RALLS	2	1	1	3	2	3	4	1	2	0	0.00
RANDOLPH	1	2	1	0	0	0	2	1	1	1	0.01
RAY	1	1	1	1	0	0	0	2	2	0	0.00
REYNOLDS	13	7	9	7	11	13	11	13	7	10	0.11
RIPLEY	17	25	32	37	38	30	37	37	26	27	0.29
SALINE	0	0	1	1	2	1	2	1	0	0	0.00
SCOTLAND	1	1	3	2	1	1	1	0	0	0	0.00
SCOTT	856	869	846	770	791	805	810	897	946	950	10.32
SHANNON	4	5	5	6	4	2	4	2	2	2	0.02
SHELBY	0	0	0	0	1	0	2	1	1	1	0.01
ST CHARLES	263	304	321	341	364	366	370	382	400	460	5.00
ST FRANCOIS	124	136	116	102	104	131	135	116	130	136	1.48
ST LOUIS - GREATER	846	978	1114	1239	1295	1327	1340	1371	1274	1249	13.56
ST LOUIS CITY	162	138	136	172	196	225	249	264	232	225	2.44
STE GENEVIEVE	110	95	97	128	119	131	119	111	107	110	1.19
STODDARD	316	319	358	350	332	340	303	334	342	359	3.90
STONE	0	0	0	0	2	2	2	1	0	0	0.00
SULLIVAN	1	1	0	0	0	0	0	0	0	0	0.00
TANEY	3	3	2	1	0	0	2	4	5	5	0.05
TEXAS	8	5	2	0	0	0	1	1	1	2	0.02
VERNON	1	1	0	0	0	0	0	0	0	0	0.00

WARREN	32	28	25	23	24	25	27	23	16	16	0.17
WASHINGTON	19	22	28	29	28	29	33	34	23	22	0.24
WAYNE	49	47	50	42	50	50	61	55	44	47	0.51
WEBSTER	3	2	1	2	3	2	1	0	0	1	0.01
WRIGHT	4	2	4	4	2	3	3	1	1	0	0.00
<b>TOTAL IN-STATE</b>	<b>6335</b>	<b>6365</b>	<b>6503</b>	<b>6890</b>	<b>7093</b>	<b>7191</b>	<b>7200</b>	<b>7712</b>	<b>7775</b>	<b>7999</b>	<b>86.86</b>
ILLINOIS STATE	563	590	613	626	649	678	663	646	674	697	7.57
OTHER US STATES	275	237	262	226	227	241	212	257	270	295	3.20
FOREIGN COUNTRIES	155	171	213	196	182	155	156	149	179	159	1.73
UNKNOWN	121	117	169	160	200	218	229	204	79	59	0.64
<b>TOTAL</b>	<b>7449</b>	<b>7480</b>	<b>7760</b>	<b>8098</b>	<b>8351</b>	<b>8483</b>	<b>8460</b>	<b>8968</b>	<b>8977</b>	<b>9209</b>	<b>100.00</b>

*Note:* Data for this table was taken on the Fall Census date.

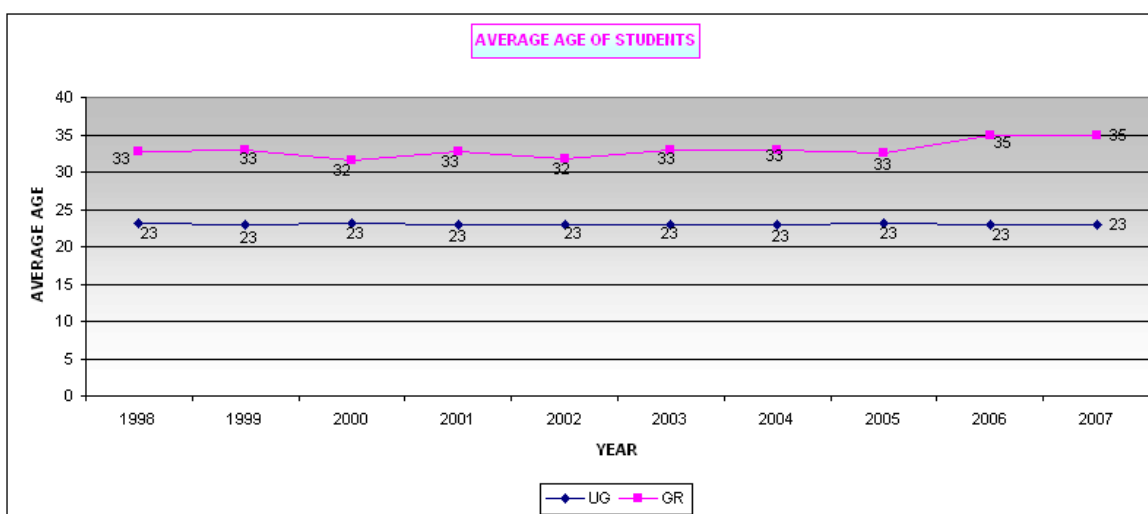
Updated:12/14/2007

[Menu](#) [Previous](#) [Next](#)

**AVERAGE AGE OF STUDENTS BY COLLEGE  
FALL 1998-2007**

College	College of Education		College of Health & Human Services		College of Liberal Arts		College of Science & Mathematics		Harrison College of Business		School of Polytechnic Studies		School of University & Graduate Studies		School of University Studies		School of Graduate Studies		University Total	
	UG	GR	UG	GR	UG	GR	UG	GR	UG	GR	UG	GR	UG	GR	UG	GR	UG	GR	UG	GR
1998	23	35	24	28	24	32	22	30	24	30	21		23	41	0	0	0	0	23	33
1999	23	35	24	29	23	33	22	29	25	31	21		22	41	0	0	0	0	23	33
2000	23	35	25	29	23	34	22	29	25	30	22	24	23	40	0	0	0	0	23	32
2001	23	34	24	30	23	35	22	28	26	29	21	29	22	44	0	0	0	0	23	33
2002	23	34	24	31	23	36	22	27	25	27	20	29	23	39	0	0	0	0	23	32
2003	24	34	24	32	23	34	22	29	23	27	24	35	20	40	0	0	0	0	23	33
2004	24	35	24	32	23	33	22	28	23	27	24	36	21	40	0	0	0	0	23	33
2005	25	34	24	32	23	34	22	27	23	27	24	35	21	39	0	0	0	0	23	33
2006	26	35	23	31	23	34	21	27	23	27	24	30	0	0	21	0	22	39	23	35
2007	25	34	23	30	22	35	21	28	23	28	24	30	0	0	22	52	0	38	23	35

Note: Age is rounded off to the next highest year.



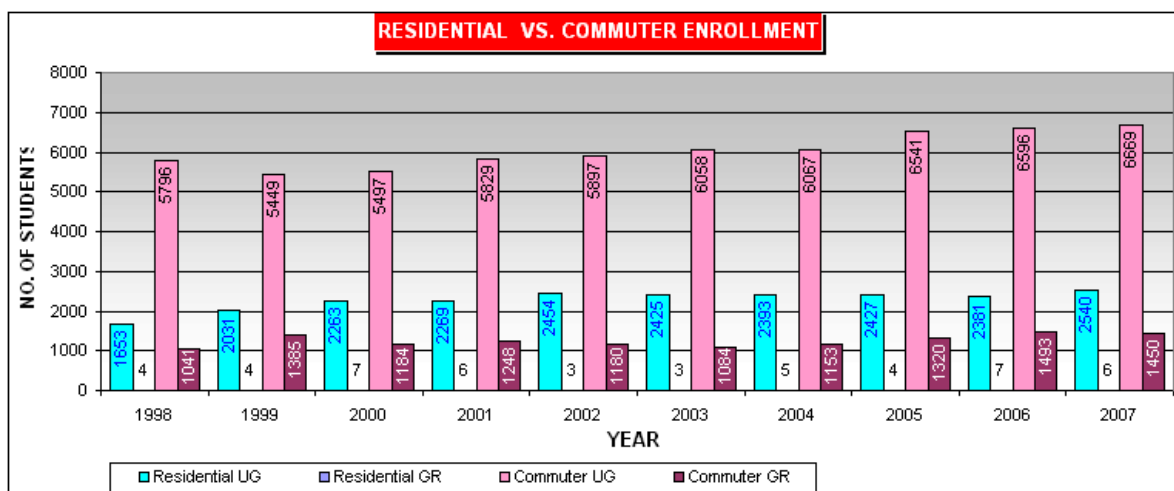
Updated: 01/03/2008

[Menu](#) [Previous](#) [Next](#)

1 0 1 6

# RESIDENTIAL VS. COMMUTER ENROLLMENT FALL 1998-2007

Year	Residential					Commuter				
	UG		GR		Total	UG		GR		Total
	N	%	N	%	N	N	%	N	%	N
1998	1653	99.8	4	0.2	1657	5796	84.8	1041	15.2	6837
1999	2031	99.8	4	0.2	2035	5449	79.7	1385	20.3	6834
2000	2263	99.7	7	0.3	2270	5497	82.3	1184	17.7	6681
2001	2269	99.7	6	0.3	2275	5829	82.4	1248	17.6	7077
2002	2454	99.9	3	0.1	2457	5897	83.3	1180	16.7	7077
2003	2425	99.9	3	0.1	2428	6058	84.8	1084	15.2	7142
2004	2393	99.8	5	0.2	2398	6067	84.0	1153	16.0	7220
2005	2427	99.8	4	0.2	2431	6541	83.2	1320	16.8	7861
2006	2381	99.7	7	0.3	2388	6596	81.5	1493	18.5	8089
2007	2540	99.8	6	0.2	2546	6669	82.1	1450	17.9	8119



Updated: 12/14/2007

[Menu](#) [Previous](#) [Next](#)

## Traditional and Non-Traditional Enrollment 1998-2007

### Total

Year	Traditional					Non-traditional				
	Residential		Commuter		Total	Residential		Commuter		Total
	N	%	N	%	N	N	%	N	%	N
1998	1642	26.6%	4542	73.4%	6184	15	0.6%	2295	99.4%	2310
1999	2027	32.4%	4225	67.6%	6252	8	0.3%	2609	99.7%	2617
2000	2261	34.5%	4296	65.5%	6557	9	0.4%	2385	99.6%	2394
2001	2264	32.9%	4626	67.1%	6890	11	0.4%	2451	99.6%	2462
2002	2451	34.7%	4615	65.3%	7066	6	0.2%	2462	99.8%	2468
2003	2421	33.4%	4819	66.6%	7240	7	0.3%	2323	99.7%	2330
2004	2390	32.3%	5007	67.7%	7397	8	0.4%	2213	99.6%	2221
2005	2422	32.4%	5058	67.6%	7480	8	0.3%	2804	99.7%	2812
2006	2375	31.9%	5070	68.1%	7445	10	0.3%	2999	99.7%	3009
2007	2538	33.1%	5136	66.9%	7674	8	0.3%	2969	99.7%	2977

### Undergraduates

Year	Traditional					Non-traditional				
	Residential		Commuter		Total	Residential		Commuter		Total
	N	%	N	%	N	N	%	N	%	N
1998	1640	27.3%	4378	72.7%	6018	13	0.9%	1418	99.1%	1431
1999	2024	33.4%	4039	66.6%	6063	7	0.5%	1410	99.5%	1417
2000	2256	35.5%	4095	64.5%	6351	7	0.5%	1402	99.5%	1409
2001	2259	33.9%	4405	66.1%	6664	10	0.7%	1424	99.3%	1434
2002	2449	35.7%	4410	64.3%	6859	5	0.3%	1487	99.7%	1492
2003	2419	34.4%	4615	65.6%	7034	6	0.4%	1443	99.6%	1449
2004	2386	33.5%	4746	66.5%	7132	7	0.5%	1321	99.5%	1328
2005	2419	33.4%	4825	66.6%	7244	8	0.5%	1716	99.5%	1724
2006	2370	32.9%	4828	67.1%	7198	8	0.5%	1754	99.5%	1762
2007	2533	34.1%	4895	65.9%	7428	7	0.4%	1763	99.6%	1770

### Graduates

Year	Traditional					Non-traditional				
	Residential		Commuter		Total	Residential		Commuter		Total
	N	%	N	%	N	N	%	N	%	N
1998	2	1.2%	164	98.8%	166	2	0.2%	877	99.8%	879
1999	3	1.6%	186	98.4%	189	1	0.1%	1199	99.9%	1200
2000	5	2.4%	201	97.6%	206	2	0.2%	983	99.8%	985
2001	5	2.2%	221	97.8%	226	1	0.1%	1027	99.9%	1028
2002	2	1.0%	205	99.0%	207	1	0.1%	975	99.9%	976
2003	2	1.0%	204	99.0%	206	1	0.1%	880	99.9%	881
2004	4	1.5%	261	98.5%	265	1	0.1%	892	99.9%	893
2005	3	1.3%	233	98.7%	236	0	0.0%	1088	100.0%	1088
2006	5	2.0%	242	98.0%	247	2	0.2%	1245	99.8%	1247
2007	5	2.0%	241	98.0%	246	1	0.1%	1206	99.9%	1207

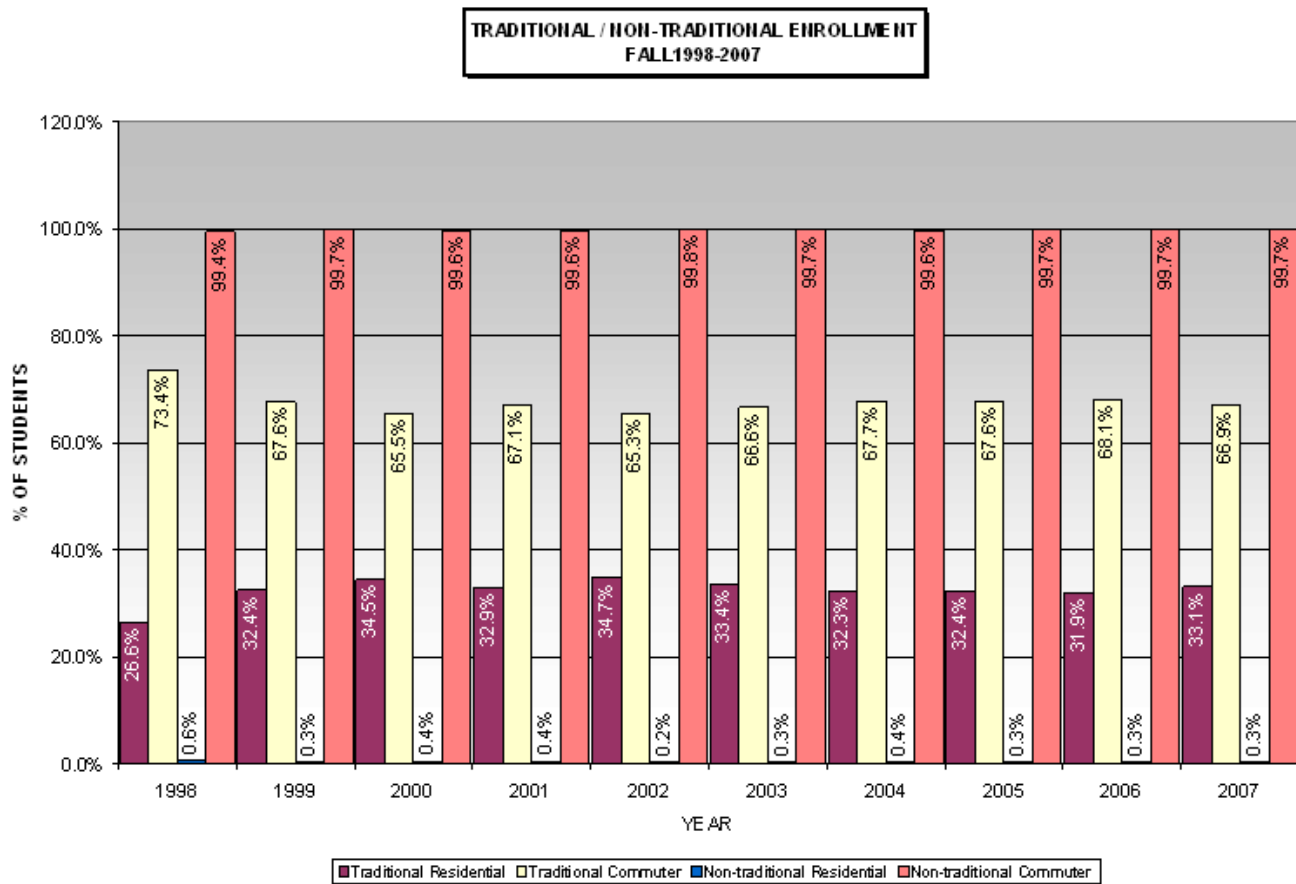
**Note:** Data for this table was taken on the Fall Census date.

Non-traditional students are those who are 25 and older.

Residential students are those who reside in the university residence halls.

Commuters are students who do not reside in the university residence halls.

**Unduplicated Count:** Each student is counted only once irrespective of the number of majors he/she is enrolled in.



Updated: 07/18/2008

[Menu](#) [Previous](#)

[Part 5: First-Time Freshmen Enrollment](#)



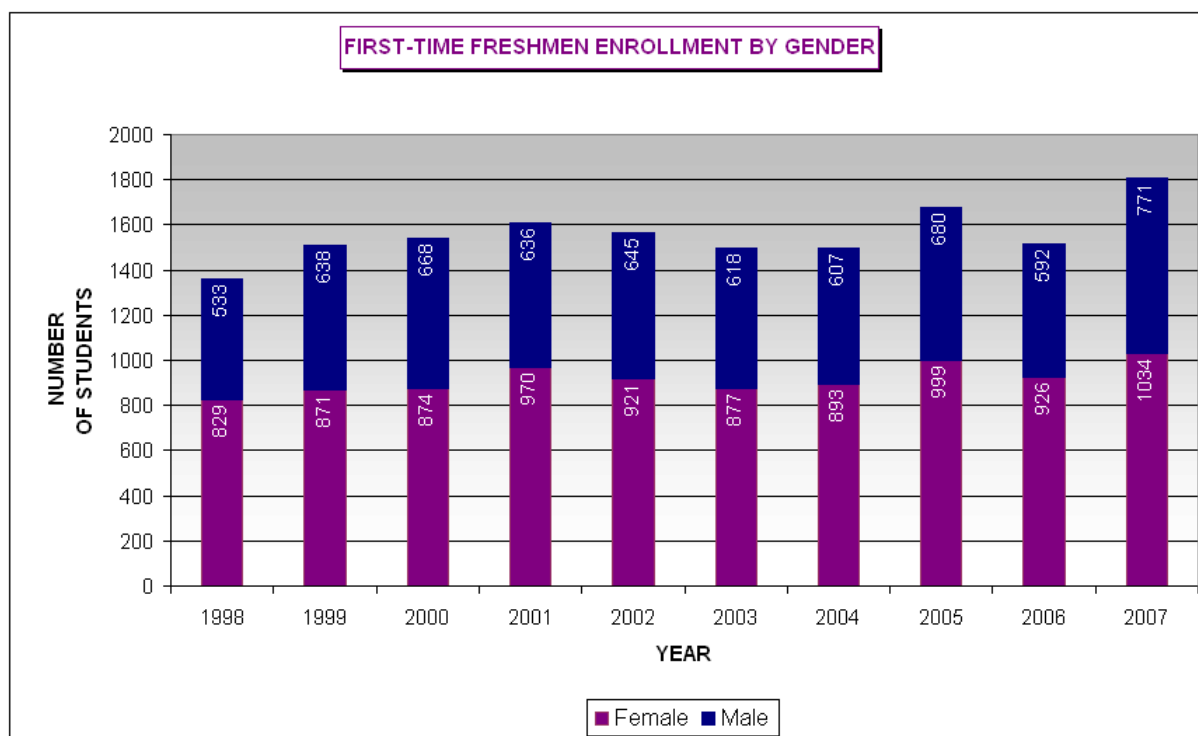
***FIRST-TIME FRESHMEN  
ENROLLMENT HIGHLIGHTS***

- 1805 students were enrolled in fall 2007 as first-time freshmen, of which 1034 were female, and 771 were male.
- The fall 2007 first-time freshmen enrollment increased by 287 students (18.9%) from the previous year.
- Enrollment of first-time freshmen women went up by about 11.7% (from 926 to 1034); and enrollment of first-time freshmen men increased by about 30.2% (from 592 to 771) in fall 2007.
- Of the 1805 first-time freshmen students enrolled in fall 2007, 1651 (about 91%) were full-time students.
- The average composite ACT score of first-time freshmen is 22 for both men and women.
- Over the years, 2003 to 2007, the average ACT Math scores of first-time freshmen men have been slightly higher than that of women. Whereas, the average ACT English scores of women have been slightly higher than men.
- The average high school GPA for men is 3.07. The average high school GPA for women is 3.32.

[Menu](#)   [Next](#)

**FIRST-TIME FRESHMEN ENROLLMENT BY GENDER  
UNDUPLICATED COUNT (FALL 1998-2007)**

Gender	1998		1999		2000		2001		2002		2003		2004		2005		2006		2007	
	N	%	N	%	N	%	N	%	N	%	N	%	N	%	N	%	N	%	N	%
<b>Female</b>	829	60.9	871	57.7	874	56.7	970	60.4	921	58.8	877	58.7	893	59.5	999	59.5	926	61.0	1034	57.3
<b>Male</b>	533	39.1	638	42.3	668	43.3	636	39.6	645	41.2	618	41.3	607	40.5	680	40.5	592	39.0	771	42.7
<b>Total</b>	1362	100.0	1509	100.0	1542	100.0	1606	100.0	1566	100.0	1495	100.0	1500	100.0	1679	100.0	1518	100.0	1805	100.0

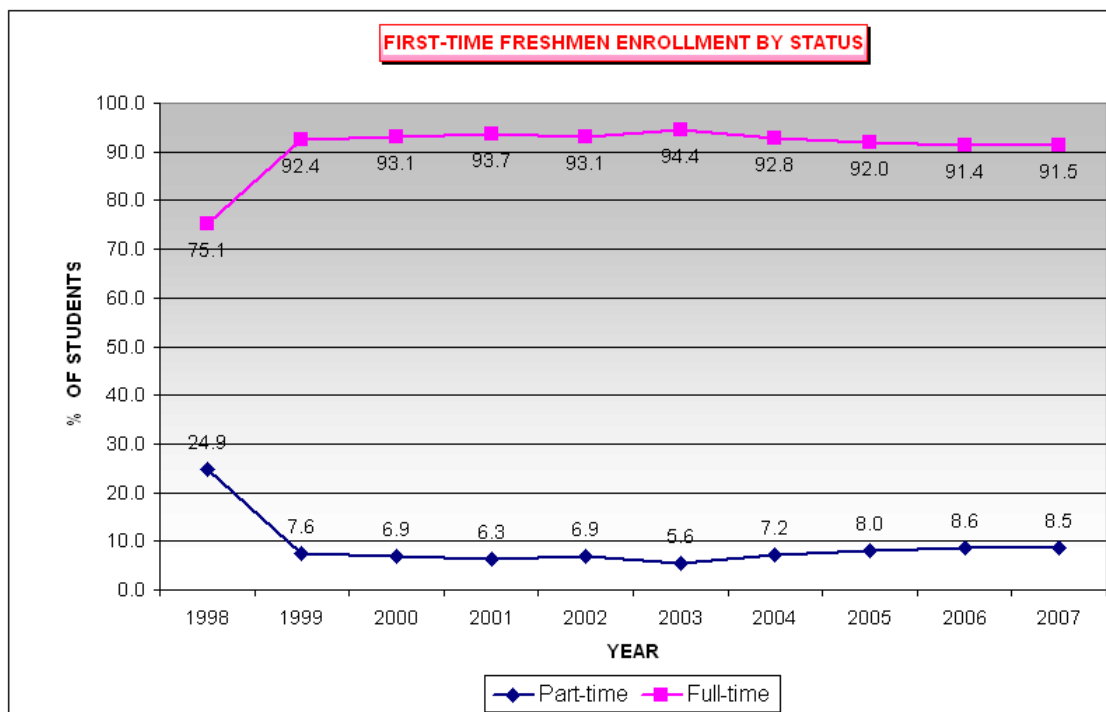


Updated: 07/17/2008

[Menu](#) [Previous](#) [Next](#)

**FIRST-TIME FRESHMEN ENROLLMENT BY FULL-TIME, PART-TIME STATUS  
UNDUPLICATED COUNT (FALL 1998-2007)**

	1998		1999		2000		2001		2002		2003		2004		2005		2006		2007	
	N	%	N	%	N	%	N	%	N	%	N	%	N	%	N	%	N	%	N	%
<b>Part-time</b>	339	24.9	114	7.6	106	6.9	101	6.3	108	6.9	84	5.6	108	7.2	135	8.0	130	8.6	154	8.5
<b>Full-time</b>	1023	75.1	1395	92.4	1436	93.1	1505	93.7	1458	93.1	1411	94.4	1392	92.8	1544	92.0	1388	91.4	1651	91.5
<b>Total</b>	1362	100.0	1509	100.0	1542	100.0	1606	100.0	1566	100.0	1495	100.0	1500	100.0	1679	100.0	1518	100.0	1805	100.0



Updated: 12/21/2007

[Menu](#) [Previous](#) [Next](#)

# **FIRST-TIME FRESHMEN PROFILE** **FALL 2003-2007**

## **HS GPA**

HS GPA of First-time Freshmen	2003				2004				2005				2006				2007			
	Male		Female		Male		Female		Male		Female		Male		Female		Male		Female	
	N	%	N	%	N	%	N	%	N	%	N	%	N	%	N	%	N	%	N	%
Number of students who submitted GPA	575	93.0	807	92.0	566	93.2	841	94.2	642	94.4	923	92.4	566	95.6	871	94.1	746	96.8	990	95.7
Number of students who had a GPA of 4.0	48	8.3	133	16.5	52	9.2	144	17.1	48	7.5	150	16.3	39	6.9	107	12.3	47	6.3	105	10.6
GPA between 3.5 and 3.99	138	24.0	292	36.2	118	20.8	256	30.4	140	21.8	310	33.6	123	21.7	293	33.6	160	21.4	320	32.3
GPA between 3.0 and 3.49	140	24.3	221	27.4	164	29.0	226	26.9	183	28.5	225	24.4	145	25.6	224	25.7	204	27.3	278	28.1
GPA between 2.5 and 2.99	147	25.6	116	14.4	142	25.1	164	19.5	164	25.5	157	17	141	24.9	182	20.9	194	26.0	194	19.6
GPA less than 2.5	102	17.7	45	5.6	90	15.9	51	6.1	107	16.7	81	8.78	118	20.8	66	7.58	141	18.9	93	9.39
Average GPA	3.10		3.42		3.12		3.36		3.10		3.36		3.06		3.35		3.07		3.32	

## **HS Position in Class**

HS Position in Class	2003	2004	2005	2006	2007
Percent of students who submitted high school class rank	90	90	89	89	91
Percent in top 10th of high school graduating class	12	15	15	15	14
Percent in top quarter of high school graduating class	36	36	37	39	37
Percent in top half of high school graduating class	69	66	66	67	66
Percent in bottom half of high school graduating class	31	34	34	33	34
Percent in bottom quarter of high school graduating class	9	10	11	10	11

## **Average ACT Scores**

Average ACT	2003		2004		2005		2006		2007	
	Male	Female	Male	Female	Male	Female	Male	Female	Male	Female
ACT English	21	22	21	23	21	22	22	23	22	23
ACT Math	22	21	22	21	22	21	22	21	22	21
ACT Composite	22	22	22	22	22	22	22	22	22	22

*Note:* Old ACT scores of 6 have a concordant level of 11, and old ACT scores of 11 have a concordant level of 15.

Updated: 12/21/2007

[Menu](#) [Previous](#) [Next](#)

# ACT SCORES OF FIRST-TIME FRESHMEN (FALL 2003-2007)

ACT Composite	2003				2004				2005				2006				2007			
	Male		Female		Male		Female		Male		Female		Male		Female		Male		Female	
	N	%	N	%	N	%	N	%	N	%	N	%	N	%	N	%	N	%	N	%
# who submitted ACT scores	586	100	811	100	569	100	831	100	628	100	896	100	545	100	856	100	720	100	964	100
ACT score between 30 and 36	26	4.44	31	3.82	22	3.87	32	3.85	25	3.98	34	3.79	29	5.32	37	4.32	41	5.69	40	4.15
ACT score between 25 and 29	134	22.87	182	22.44	124	21.79	202	24.31	128	20.38	180	20.09	116	21.28	211	24.65	161	22.36	218	22.61
ACT score between 18 and 24	399	68.09	560	69.05	402	70.65	571	68.71	441	70.22	625	69.75	364	66.79	563	65.77	487	67.64	659	68.36
ACT score between 12 and 17	26	4.44	37	4.56	21	3.69	25	3.01	34	5.41	57	6.36	36	6.61	45	5.26	31	4.31	47	4.88
ACT score between 6 and 11	1	0.17	1	0.12	0	0.00	1	0.12	0	0.00	0	0.00	0	0.00	0	0.00	0	0.00	0	0.00
ACT score below 6	0	0.00	0	0.00	0	0.00	0	0.00	0	0.00	0	0.00	0	0.00	0	0.00	0	0.00	0	0.00
ACT English	2003				2004				2005				2006				2007			
	Male		Female		Male		Female		Male		Female		Male		Female		Male		Female	
	N	%	N	%	N	%	N	%	N	%	N	%	N	%	N	%	N	%	N	%
# who submitted ACT scores	575	100	807	100	561	100	824	100	617	100	884	100	544	100	856	100	719	100	964	100
ACT score between 30 and 36	34	5.91	69	8.55	26	4.63	86	10.44	29	4.70	76	8.60	44	8.09	84	9.81	48	6.68	88	9.13
ACT score between 25 and 29	114	19.83	183	22.68	107	19.07	206	25.00	110	17.83	194	21.95	107	19.67	204	23.83	137	19.05	219	22.72
ACT score between 18 and 24	325	56.52	446	55.27	324	57.75	433	52.55	359	58.18	488	55.20	281	51.65	453	52.92	410	57.02	540	56.02
ACT score between 12 and 17	94	16.35	107	13.26	103	18.36	96	11.65	114	18.48	123	13.91	105	19.30	111	12.97	118	16.41	112	11.62
ACT score between 6 and 11	8	1.39	2	0.25	1	0.18	3	0.36	5	0.81	3	0.34	7	1.29	4	0.47	6	0.83	5	0.52
ACT score below 6	0	0.00	0	0.00	0	0.00	0	0.00	0	0.00	0	0.00	0	0.00	0	0.00	0	0.00	0	0.00
ACT Math	2003				2004				2005				2006				2006			
	Male		Female		Male		Female		Male		Female		Male		Female		Male		Female	
	N	%	N	%	N	%	N	%	N	%	N	%	N	%	N	%	N	%	N	%
# who submitted ACT scores	575	100	807	100	561	100	824	100	617	100	884	100	545	100	856	100	725	100	964	100
ACT score between 30 and 36	30	5.22	24	2.97	18	3.21	19	2.31	24	3.89	21	2.38	33	6.06	26	3.04	38	5.24	24	2.49
ACT score between 25 and 29	129	22.43	163	20.20	119	21.21	146	17.72	142	23.01	159	17.99	131	24.04	170	19.86	167	23.03	176	18.26
ACT score between 18 and 24	308	53.57	430	53.28	297	52.94	426	51.70	326	52.84	455	51.47	267	48.99	420	49.07	396	54.62	529	54.88
ACT score between 12 and 17	108	18.78	187	23.17	127	22.64	230	27.91	125	20.26	249	28.17	114	20.92	240	28.04	122	16.83	235	24.38
ACT score between 6 and 11	0	0.00	2	0.25	0	0.00	2	0.24	0	0.00	0	0.00	0	0.00	0	0.00	2	0.28	0	0.00
ACT score below 6	0	0.00	1	0.12	0	0.00	1	0.12	0	0.00	0	0.00	0	0.00	0	0.00	0	0.00	0	0.00
<i>Note: Old ACT scores of 6 have a concordant level of 11, and old ACT scores of 11 have a concordant level of 15.</i>																				

Updated: 07/18/2008

[Menu](#) [Previous](#)

[Part 6: Faculty and Staff Information](#)

3 6 5

### *FACULTY AND STAFF HIGHLIGHTS*

- 1348 Faculty & Staff members were employed at Southeast Missouri State University during fall 2007, of which 1154 were full-time employees and 743 were women.
- Approximately 55% of full-time faculty are men and 45% of full-time faculty are women. 43% of full-time staff positions are held by men compared to 57% held by women. And 32% of part-time positions are held by men while 68% are held by women.
- Of the 194 part-time staff employed in fall 2007, 73% were graduate/teaching assistants.
- Among the total faculty & staff employed in fall 2007, 89% were Caucasian, 5% were African-American, and 4% were Asian.
- The majority of full-time male faculty (37%) have salaries in the range of \$50,000-64,999. The majority of full-time female faculty (33%) have salaries in the range of \$40,000-49,999.

[Menu](#)   [Next](#)

Updated 1/28/2008

# FACULTY & STAFF POSITIONS BY ETHNICITY FALL 2007

*Total Employees*

Ethnicity	Full-time						Part-time						Total					
	Men		Women		Total		Men		Women		Total		Men		Women		Total	
	N	%	N	%	N	%	N	%	N	%	N	%	N	%	N	%	N	%
NRA	0	0.0	0	0.0	0	0.0	0	0.0	0	0.0	0	0.0	0	0.0	0	0.0	0	0.0
Black, non-Hispanic	31	43.7	35	49.3	66	93.0	3	4.2	2	2.8	5	7.0	34	47.9	37	52.1	71	100.0
White, non-Hispanic	475	39.7	552	46.1	1027	85.8	54	4.5	116	9.7	170	14.2	529	44.2	668	55.8	1197	100.0
American Indian	3	18.8	10	62.5	13	81.3	0	0.0	3	18.8	3	18.8	3	18.8	13	81.3	16	100.0
Asian/Pacific Islander	31	57.4	9	16.7	40	74.1	5	9.3	9	16.7	14	25.9	36	66.7	18	33.3	54	100.0
Hispanic	3	30.0	5	50.0	8	80.0	0	0.0	2	20.0	2	20.0	3	30.0	7	70.0	10	100.0
Race/Ethnicity Unknown	0	0.0	0	0.0	0	0.0	0	0.0	0	0.0	0	0.0	0	0.0	0	0.0	0	0.0
<b>Total</b>	<b>543</b>	<b>40.3</b>	<b>611</b>	<b>45.3</b>	<b>1154</b>	<b>85.6</b>	<b>62</b>	<b>4.6</b>	<b>132</b>	<b>9.8</b>	<b>194</b>	<b>14.4</b>	<b>605</b>	<b>44.9</b>	<b>743</b>	<b>55.1</b>	<b>1348</b>	<b>100.0</b>

*Full-time faculty by salary class intervals and race/ethnicity***Men**

Ethnicity	Below \$30,000	30,000-39,999	40,000-49,999	50,000-64,999	65,000-79,999	80,000-99,999	100,000 and above	Total men
Nonresident Alien								0
Black, non-Hispanic			1		2			3
American Indian/Alaska Native								0
Asian/Pacific Islander			2	10	7	5	1	25
Hispanic				1				1
White, non-Hispanic		12	48	72	48	15	2	197
Race/ethnicity unknown								0
<b>Grand total</b>	<b>0</b>	<b>12</b>	<b>51</b>	<b>83</b>	<b>57</b>	<b>20</b>	<b>3</b>	<b>226</b>

**Women**

Ethnicity	Below \$30,000	30,000-39,999	40,000-49,999	50,000-64,999	65,000-79,999	80,000-99,999	100,000 and above	Total women
Nonresident Alien								0
Black, non-Hispanic		2	2	1				5
American Indian/Alaska Native		1	2	1				4
Asian/Pacific Islander			4	1	2	1		8
Hispanic		2						2
White, non-Hispanic		44	53	38	29	4		168
Race/ethnicity unknown								0
<b>Grand total</b>	<b>0</b>	<b>49</b>	<b>61</b>	<b>41</b>	<b>31</b>	<b>5</b>	<b>0</b>	<b>187</b>

Source: IPEDS Staff Survey

Updated: 01/28/2008

[Menu](#) [Previous](#) [Next](#)

# FACULTY & STAFF BY RANK/POSITION FALL 2003-2007

## Full-time Faculty Positions

Position	2003					2004					2005					2006					2007				
	Men		Women		Total	Men		Women		Total	Men		Women		Total	Men		Women		Total	Men		Women		Total
	N	%	N	%		N	%	N	%		N	%	N	%		N	%	N	%		N	%	N	%	
Professors	87	37.7	26	14.9	113	87	37.8	31	17.6	118	86	37.2	35	19.6	121	89	40.1	39	21.0	128	93	41.2	45	24.1	138
Associate Professors	65	28.1	39	22.4	104	64	27.8	34	19.3	98	56	24.2	32	17.9	88	58	26.1	28	15.1	86	56	24.8	28	15.0	84
Assistant Professors	54	23.4	48	27.6	102	49	21.3	46	26.1	95	56	24.2	44	24.6	100	46	20.7	41	22.0	87	48	21.2	36	19.3	84
Instructors	25	10.8	61	35.1	86	29	12.6	65	36.9	94	32	13.9	68	38.0	100	29	13.1	78	41.9	107	29	12.8	78	41.7	107
Lecturers	0	0.0	0	0.0	0	0	0.0	0	0.0	0	0	0.0	0	0.0	0	0	0.0	0	0.0	0	0	0.0	0	0.0	0
Others	0	0.0	0	0.0	0	1	0.4	0	0.0	1	1	0.4	0	0.0	1	0	0.0	0	0.0	0	0	0.0	0	0.0	0
Total	231	100	174	100	405	230	100	176	100	406	231	100	179	100	410	222	100	186	100	408	226	100	187	100	413

## Staff Positions

### Full-time

Position	2003					2004					2005					2006					2007				
	Men		Women		Total	Men		Women		Total	Men		Women		Total	Men		Women		Total	Men		Women		Total
	N	%	N	%		N	%	N	%		N	%	N	%		N	%	N	%		N	%	N	%	
Executive/ Administrative/Managerial	30	10.1	32	8.4	62	26	9.0	31	8.1	57	26	9.0	31	7.8	57	29	9.4	31	7.3	60	29	9.1	34	8.0	63
Other Professional	96	32.4	135	35.4	231	91	31.5	136	35.3	227	94	32.6	143	36.1	237	105	34.0	162	38.3	267	109	34.4	163	38.4	272
Technical	27	9.1	18	4.7	45	28	9.7	20	5.2	48	25	8.7	19	4.8	44	26	8.4	29	6.9	55	27	8.5	28	6.6	55
Clerical/Secretarial	8	2.7	164	43.0	172	8	2.8	167	43.4	175	7	2.4	169	42.7	176	7	2.3	167	39.5	174	9	2.8	162	38.2	171
Skilled crafts	66	22.3	0	0.0	66	63	21.8	0	0.0	63	88	30.6	6	1.5	94	91	29.4	6	1.4	97	91	28.7	6	1.4	97
Service/Maintenance	69	23.3	32	8.4	101	73	25.3	31	8.1	104	48	16.7	28	7.1	76	51	16.5	28	6.6	79	52	16.4	31	7.3	83
Total	296	100	381	100	677	289	100	385	100	674	288	100	396	100	684	309	100	423	100	732	317	100	424	100	741

### Part-time

Position	2003					2004					2005					2006					2007				
	Men		Women		Total	Men		Women		Total	Men		Women		Total	Men		Women		Total	Men		Women		Total
	N	%	N	%		N	%	N	%		N	%	N	%		N	%	N	%		N	%	N	%	
Faculty (Instruction/Research)	1	1.5	4	2.8	5	2	3.0	7	4.9	9	7	9.0	15	10.1	22	2	3.3	7	4.9	9	1	1.6	5	3.8	6
Graduate Assistants	51	75.0	108	76.1	159	50	74.6	104	72.2	154	56	71.8	98	66.2	154	45	73.8	105	72.9	150	46	74.2	96	72.7	142
Executive/ Administrative/Managerial	0	0.0	0	0.0	0	0	0.0	0	0.0	0	0	0.0	0	0.0	0	0	0.0	1	0.7	1	0	0.0	1	0.8	1
Other Professional	4	5.9	12	8.5	16	6	9.0	13	9.0	19	5	6.4	15	10.1	20	6	9.8	9	6.3	15	6	9.7	11	8.3	17
Technical	0	0.0	0	0.0	0	0	0.0	1	0.7	1	0	0.0	3	2.0	3	0	0.0	5	3.5	5	0	0.0	3	2.3	3
Clerical/Secretarial	3	4.4	17	12.0	20	1	1.5	18	12.5	19	2	2.6	16	10.8	18	2	3.3	16	11.1	18	1	1.6	15	11.4	16
Skilled crafts	0	0.0	0	0.0	0	0	0.0	0	0.0	0	0	0.0	0	0.0	0	0	0.0	0	0.0	0	0	0.0	0	0.0	0
Service/Maintenance	9	13.2	1	0.7	10	8	11.9	1	0.7	9	8	10.3	1	0.7	9	6	9.8	1	0.7	7	8	12.9	1	0.8	9
Total	68	100	142	100	210	67	100	144	100	211	78	100	148	100	226	61	100	144	100	205	62	100	132	100	194

Source: IPEDS Staff Survey

Updated:01/28/2008

[Menu](#) [Previous](#) [Next](#)



**AVERAGE SALARY OF FACULTY BY ACADEMIC RANK  
FALL 2007**

<i>Rank</i>	<i>Salary Outlay</i>		<i>Average Salary</i>	
	<i>Men</i>	<i>Women</i>	<i>Men</i>	<i>Women</i>
Professors	\$ 6,518,642	\$ 2,733,602	\$ 74,075	\$ 68,340
Associate Professors	\$ 3,197,226	\$ 1,664,257	\$ 57,093	\$ 59,438
Assistant Professors	\$ 2,520,601	\$ 1,721,991	\$ 52,513	\$ 47,833
Instructors	\$ 1,236,647	\$ 3,032,248	\$ 42,643	\$ 39,898
Lecturers	\$ -	\$ -	\$ -	\$ -
No academic rank	\$ -	\$ -	\$ -	\$ -

**Source: IPEDS Staff Survey 2007**

Updated: 07/18/2008

[Menu](#)   [Previous](#)

[Part 7: Campus Map](#)

1 0 0

